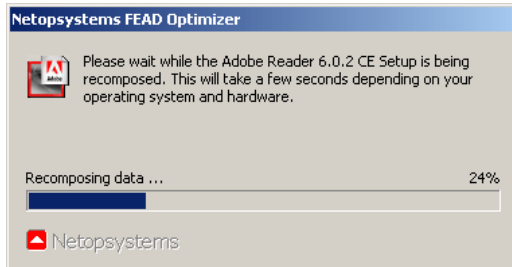


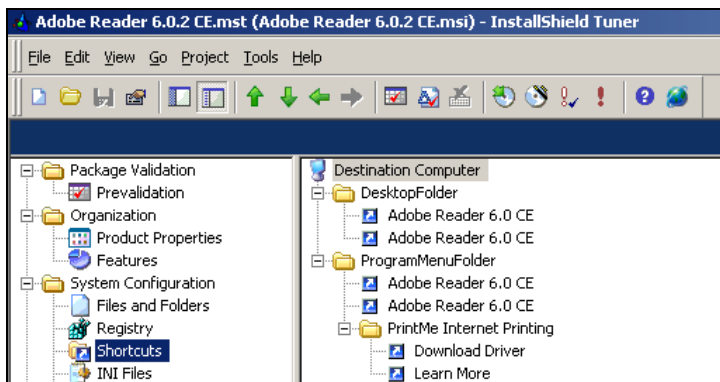
## Exercise: Installation of Acrobat Reader 6.02 CE

1. Execute 'F:\Install\AdbeRdr602\_ece\_full.exe' and wait for the 'Acrobat Reader 6.0.2 CE – Setup' screen which shows after the 'Netopsystems FEAD Optimizer' screen.



2. Start 'Windows Explorer':
  - a. Click on 'Search'
  - b. Click on 'All files and folders'
  - c. Type in 'adobe\*.msi'
  - d. Look in 'Local Disk (C:)'
  - e. Click on 'more advanced options'
  - f. Select 'Search hidden files and folders'
  - g. Click on 'Search'
  - h. Select 'Adobe Reader 6.0.2 CE.msi' file in the result screen, right click and select 'Open Containing Folder'
  - i. Have a look at what files this folder contains
  - j. Create a 'C:\Install\Acrobat Reader 6.02' directory and copy all files from the 'C:\Windows\Cache\Adobe Reader 6.0.1\ENUBIG' directory to 'C:\Install\Acrobat Reader 6.02'
3. Switch back to the 'Acrobat Reader 6.0.2 CE – Setup' screen, click 'Next' and then 'Cancel' and 'Finish' to cancel the installation.
4. Switch back to Windows Explorer and have a look at the folder where 'AdbeRdr602\_ece\_full.exe' was extracted. What happened?

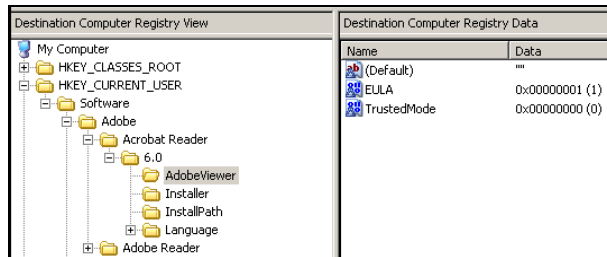
5. Make a Response Transform file for 'Adobe Reader 6.0.2 CE.msi':
  - a. Start the 'InstallShield Tuner'
  - b. Select 'Create a new transform'
  - c. Select the 'Adobe Reader 6.0.2 CE.msi' file
  - d. Select the 'Response Transform' checkbox
  - e. Click on 'Create'
  - f. Click 'Next', 'Next', 'Next' when asked for the Destination Folder' followed by 'Install'. Finish the installation by clicking 'Ok' when InstallShield states that the Response File has been created successfully.
  - g. Close the tuner
6. Click on 'Shortcuts' underneath 'System Configuration' and remove all shortcuts at the DesktopFolder, ProgramMenuFolder and PrintMe Internet Printing. Those are 'normal' non-manageable shortcuts from a ZENworks perspective.



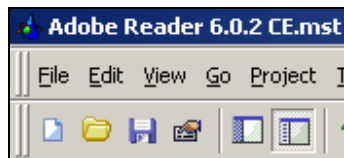
7. Click on 'Registry' underneath 'System Configuration' and left click in the lower screen 'Destination Computer Registry View'.
8. Left click on the "HKEY\_CURRENT\_USER" Registry hive. Then right click and select 'Import REG File'.
9. Select 'F:\Install\Acrobat Reader 6.02\no-eula.reg'. Select 'Overwrite the registry data' in the 'Import REG File Wizard' screen.

## Windows Installer, Novell ZENworks and InstallShield AdminStudio courseware

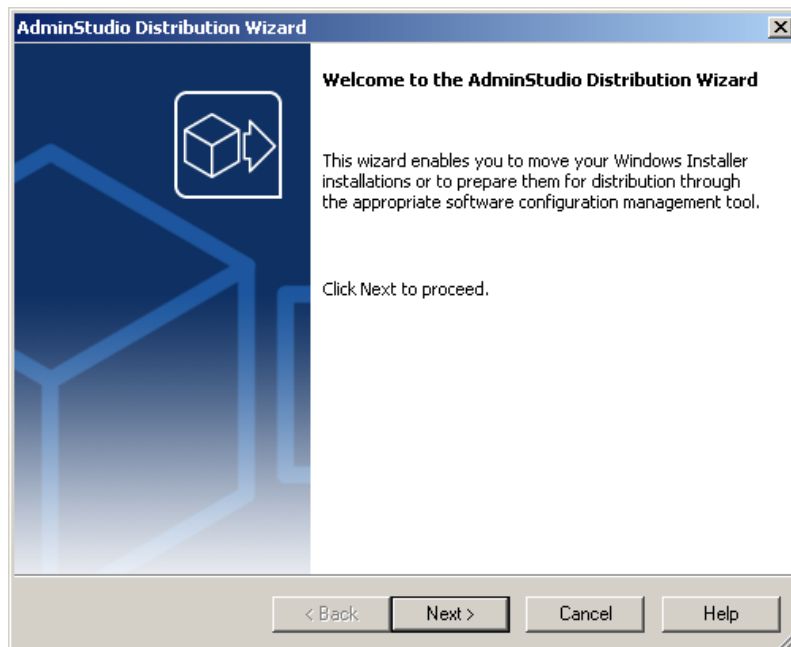
- Open up the "HKEY\_CURRENT\_USER" registry hive for 'Software\Adobe\Acrobat Reader\6.0\AdobeViewer'. In the right screen named 'Destination Computer Registry Data' you will see a new DWORD Value called 'EULA' which has been set to '0x00000001 (1)'. After verifying the occurrence of DWORD 'EULA', change its value back to '0'. We will continue on this at item 35.



- Save the transform file by using the Save button on the button bar, by using File, Save or by using the short key combination 'Ctrl+S'

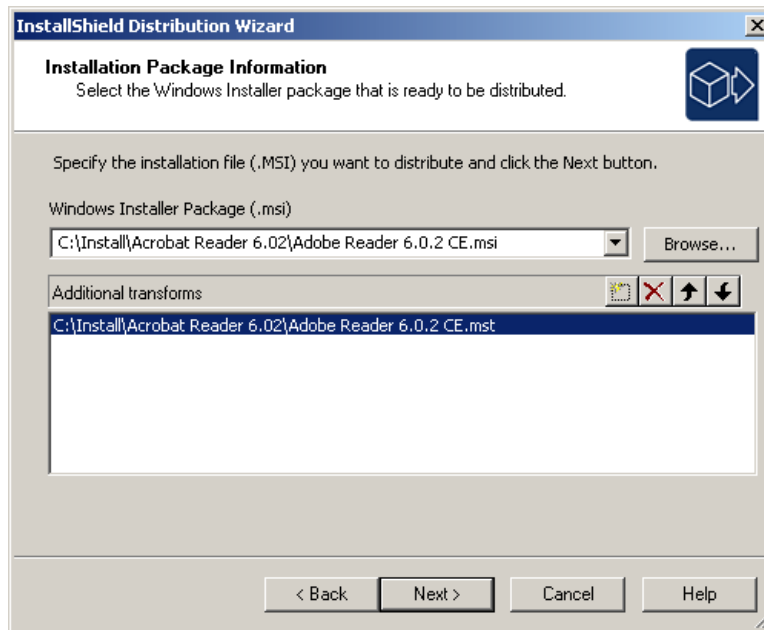


- Start the 'InstallShield Distribution Wizard' of the InstallShield AdminStudio ZENworks Edition.

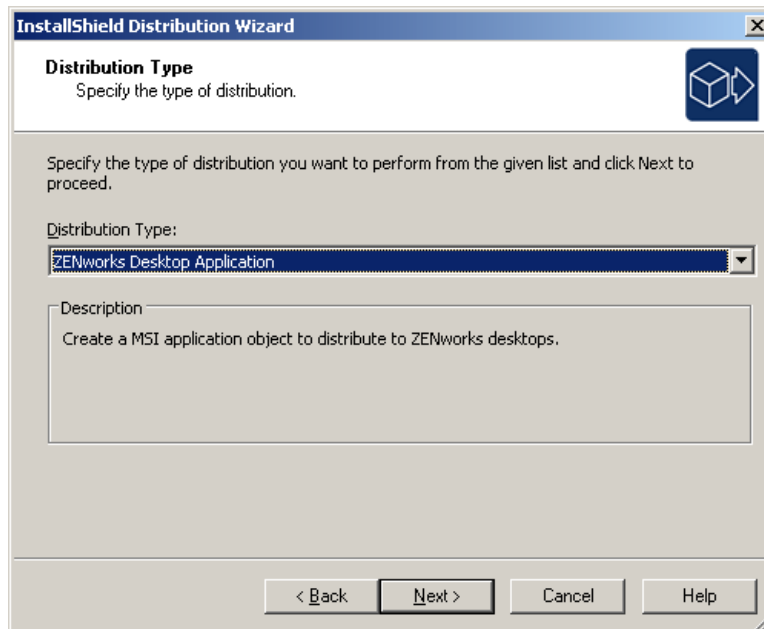


## Windows Installer, Novell ZENworks and InstallShield AdminStudio courseware

13. Select "c:\Install\Acrobat Reader 6.02\Adobe Reader 6.0.2 CE.msi" and 'c:\Install\Acrobat Reader 6.02\Adobe Reader 6.0.2 CE.mst' as both a MSI package and Transform file to distribute and click 'Next'.

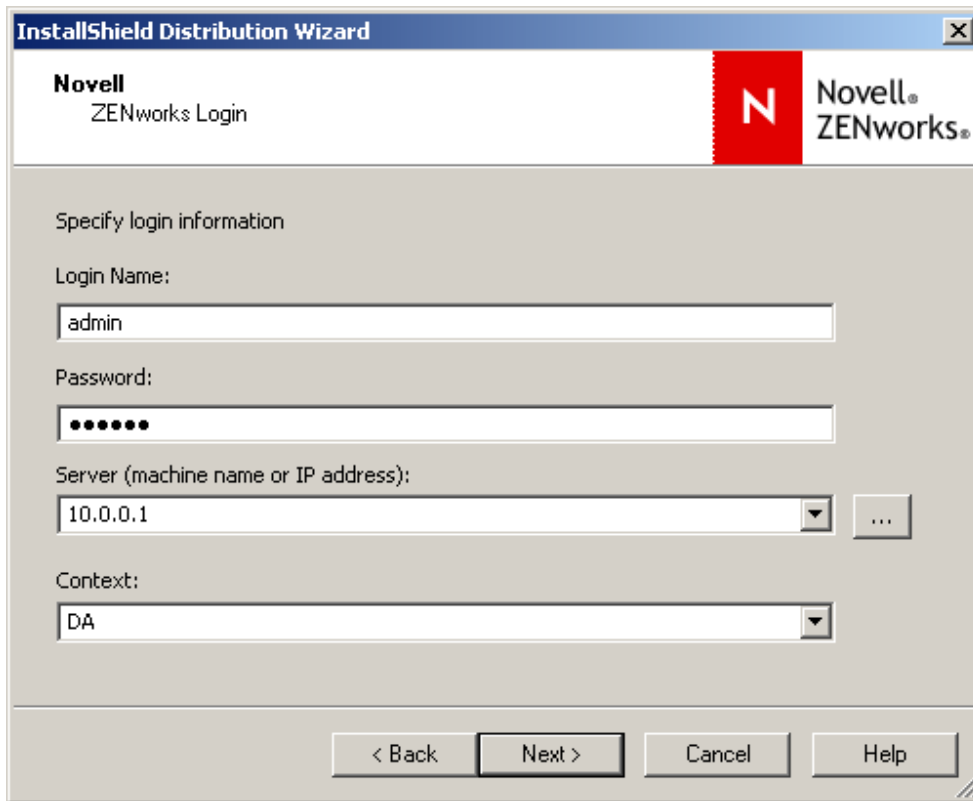


14. Select 'ZENworks Desktop Application' as your distribution type.



**Windows Installer, Novell ZENworks and InstallShield AdminStudio courseware**

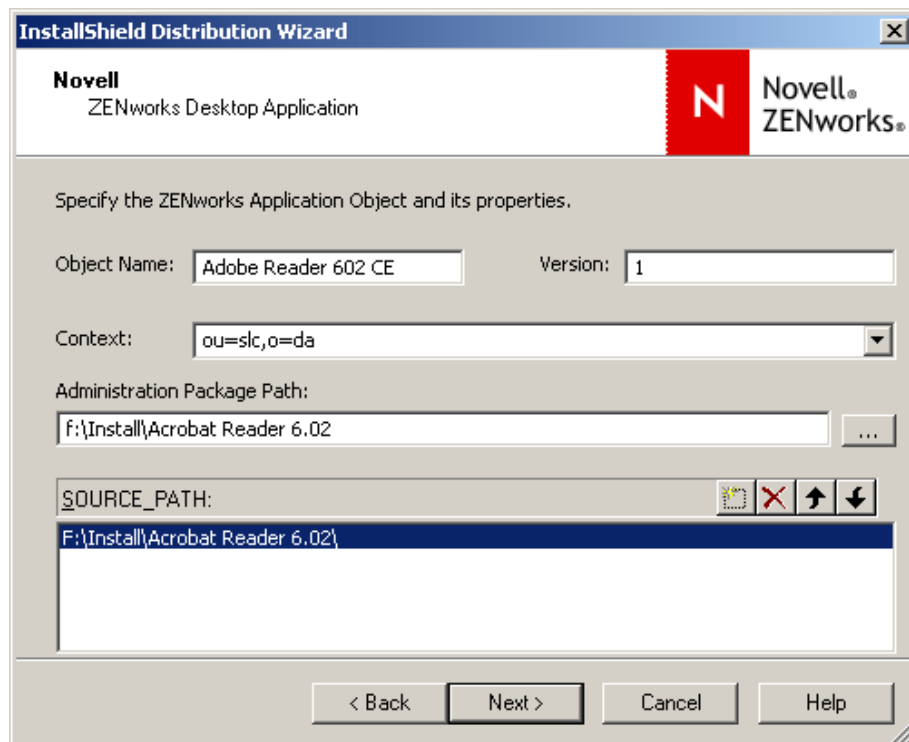
15. Fill in the fields like in the screen capture below and click 'Next'.



The screenshot shows a window titled "InstallShield Distribution Wizard" with a close button in the top right corner. The window has a header bar with the Novell logo and the text "Novell ZENworks Login". Below the header, the text "Specify login information" is displayed. There are four input fields: "Login Name:" with the text "admin", "Password:" with seven dots, "Server (machine name or IP address):" with the text "10.0.0.1" and a dropdown arrow, and "Context:" with the text "DA" and a dropdown arrow. At the bottom of the window, there are four buttons: "< Back", "Next >", "Cancel", and "Help".

16. Specify the ZENworks Application Object and its properties:

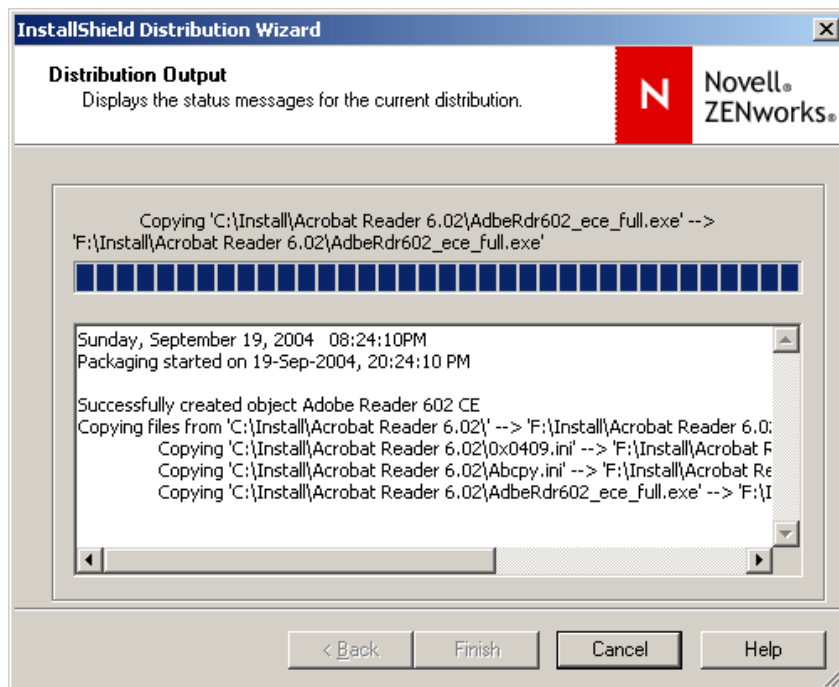
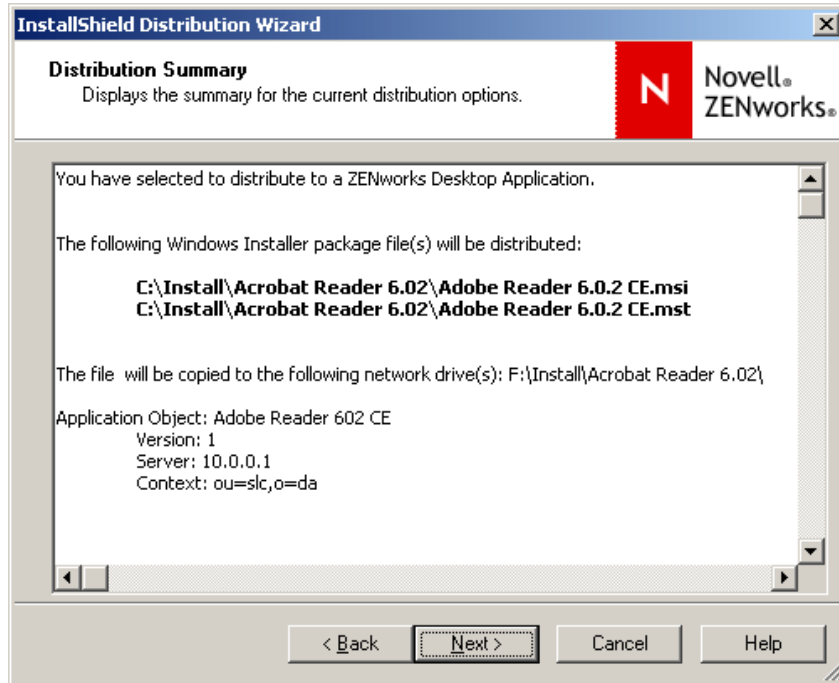
- a. The Object name in the next screen contains the name 'Adobe Reader 6.0.2 CE'. This name has periods in it. But NDS objects and therefore ZENworks application objects can't contain signs like periods and comma's. Therefore you must rename 'Adobe Reader 6.0.2 CE' to 'Adobe Reader 602 CE Installation'.
- b. Since this is our first Acrobat Reader object, we set the version number of this application to '1'.
- c. The application object will be created in the context "ou=slc,o=da".
- d. The 'Administration Package Path:' will be F:\Install\Acrobat Reader 6.02. This is directory where all files from the SOURCE\_PATH directory (and therefore also the .msi and .mst file(s)) will be copied to.
- e. Most of the times the value stated underneath 'SOURCE\_PATH' is something you will have to remove first by using the red cross sign. After that you can add the source directory which contains your prepared .msi and .mst files.



- f. Click 'Next'

## Windows Installer, Novell ZENworks and InstallShield AdminStudio courseware

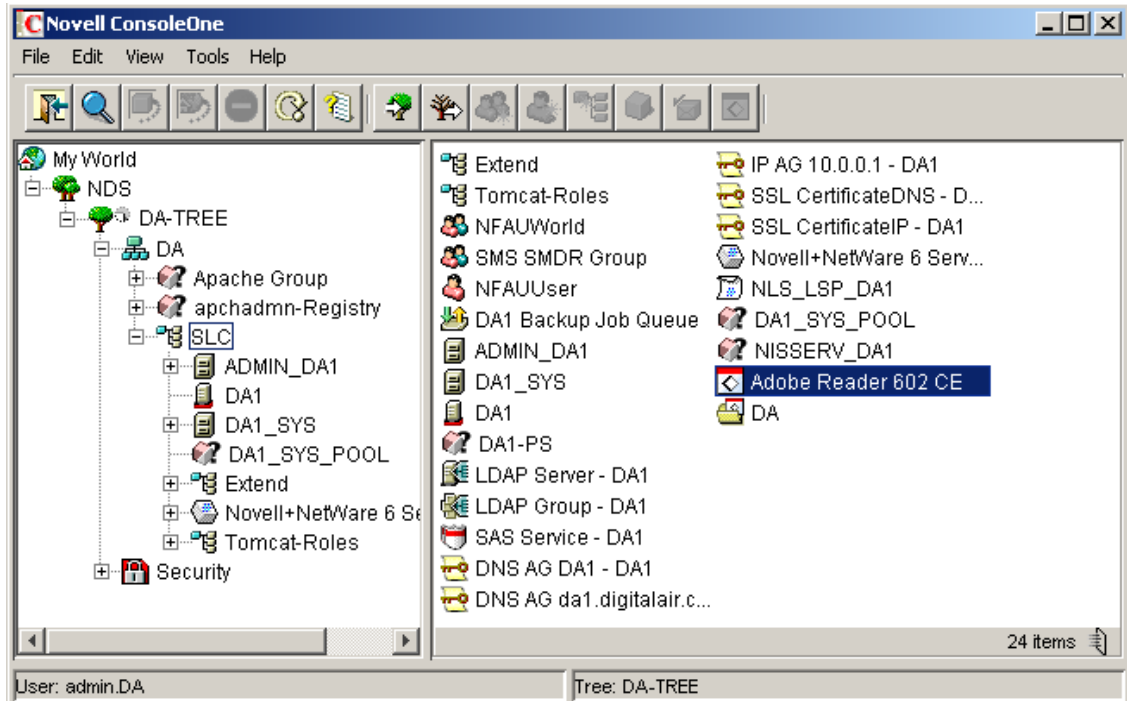
17. Have a look at the 'Distribution Summary' screen, verify your settings and click 'Next'.





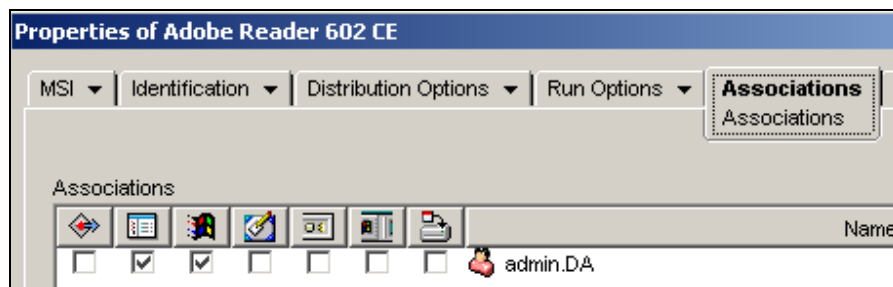
## Windows Installer, Novell ZENworks and InstallShield AdminStudio courseware

19. Start ConsoleOne and verify that an application object 'Acrobat Reader 602 CE' has been created in the DA-TREE.



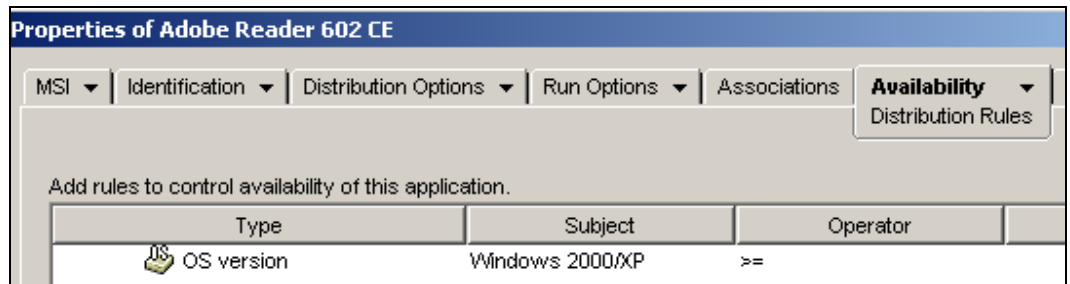
20. Double click on the application object and change the following:

- a. Add the 'admin' user to the 'admin.DA' user to the associations list:

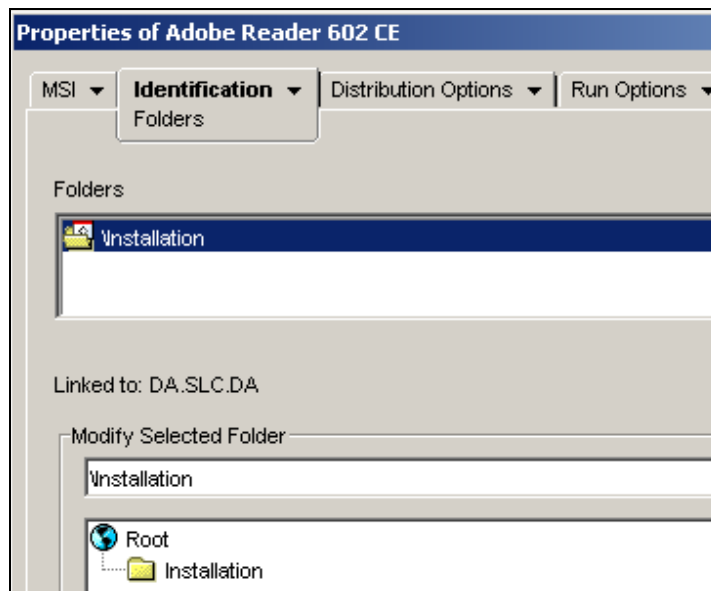


**Windows Installer, Novell ZENworks and InstallShield AdminStudio courseware**

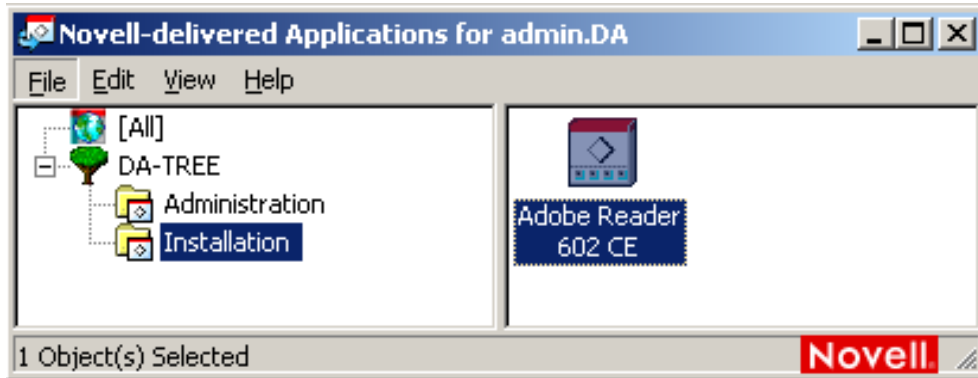
- b. Add 'Windows 2000/XP' as 'OS version' to the Distribution Rule list:



- c. Associate the 'Acrobat Reader 602 CE' Application Object to the Linked Folder 'Installation Folder' like in the screen capture below and click 'Apply' or 'Ok'.

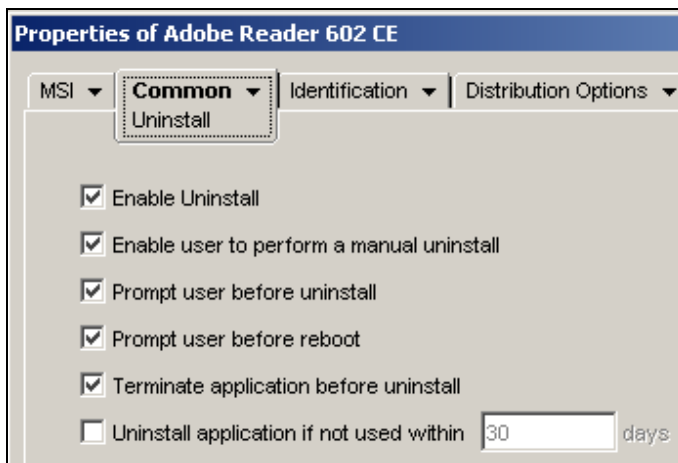


21. Refresh your NAL and verify whether the application shows in the 'Installation Folder':

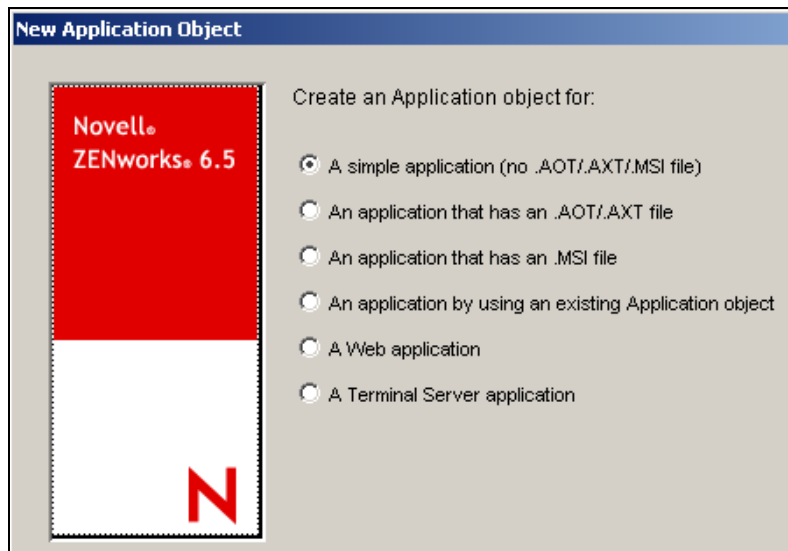
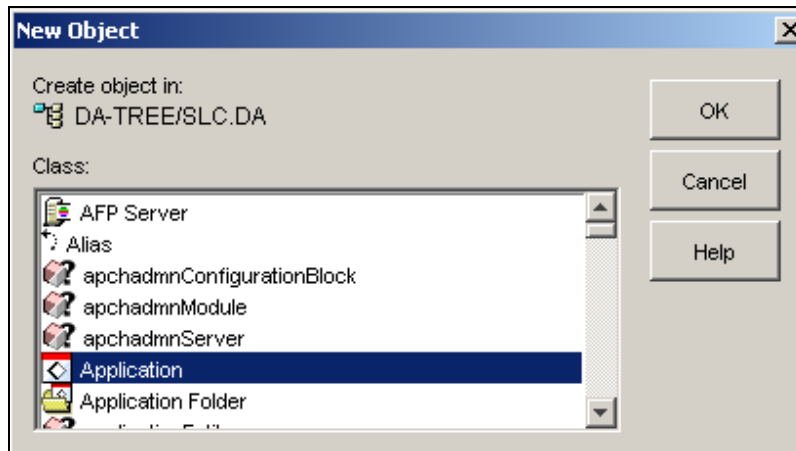


If so, install 'Acrobat Reader 6.02 CE' by double clicking the icon.

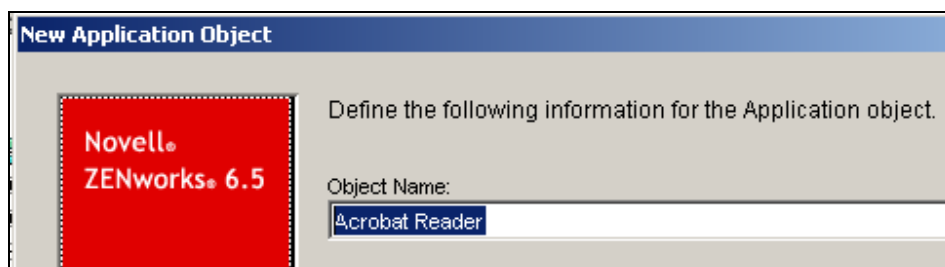
22. Return to ConsoleOne and 'Enable Uninstall' like in the screen below:



23. Create a new 'Simple' Application Object in the SLC.DA container:

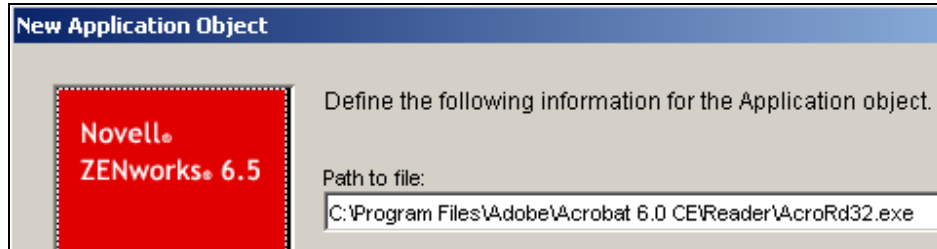


24. Call the Application Object 'Acrobat Reader'

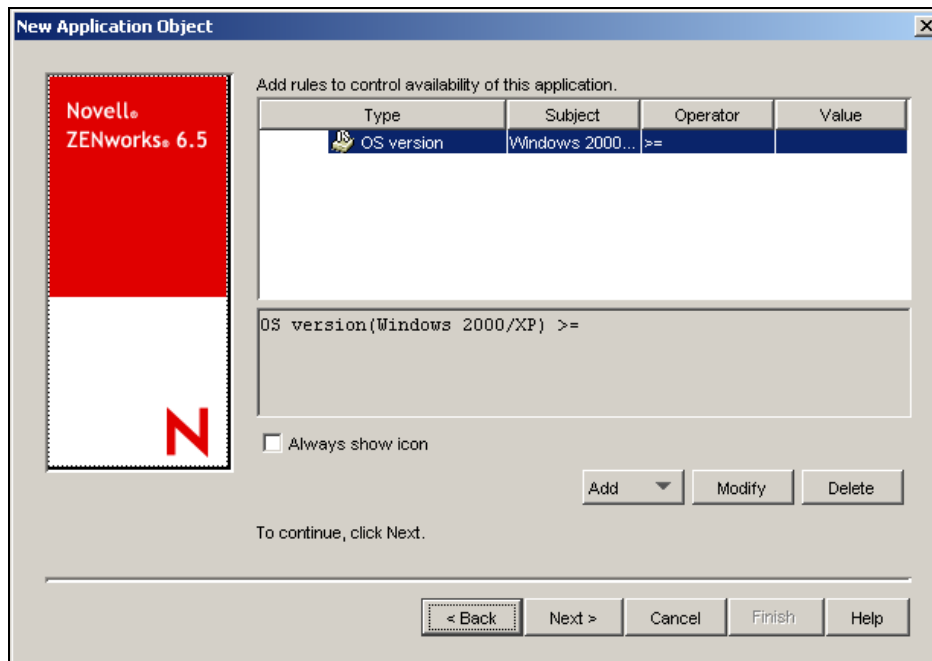


## Windows Installer, Novell ZENworks and InstallShield AdminStudio courseware

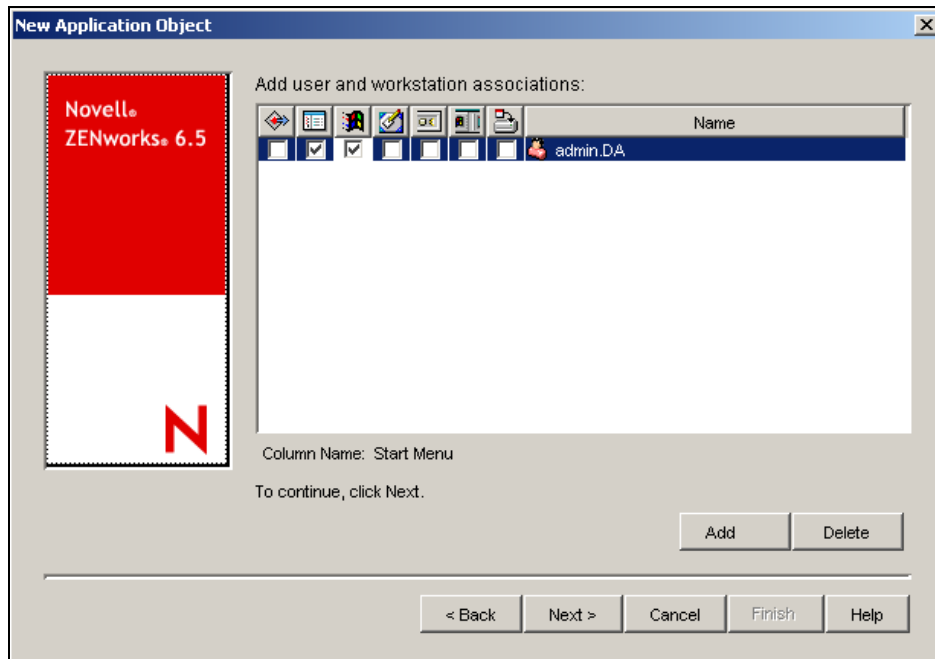
25. Use 'C:\Program Files\Adobe\Acrobat 6.0 CE\Reader\AcroRd32.exe' for the 'Path to File':



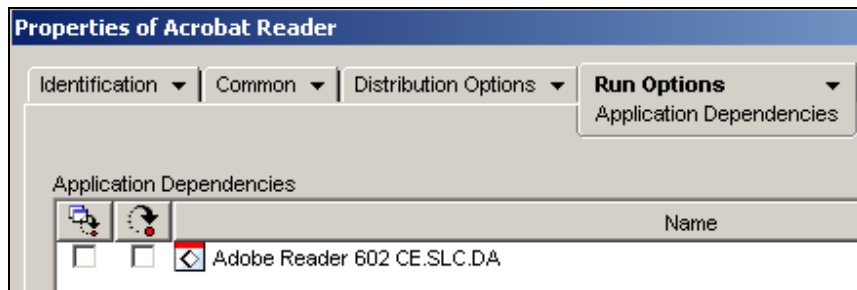
26. Add an Operating System rule for 'OS version = Windows 2000/XP' and click 'Next':



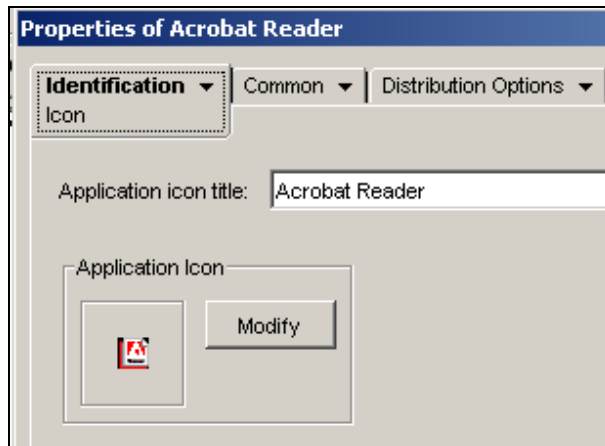
27. Add an User Association for 'Admin' and click 'Next' and then 'Finish':



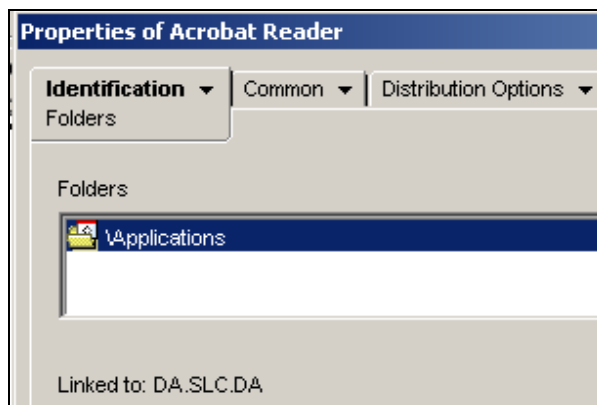
28. Add an 'Application Dependency' to the 'Acrobat Reader' application object:



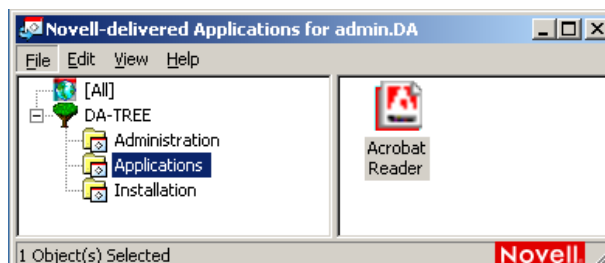
29. Go to the 'Identification, Icon' tab. Click once on 'Modify' and then click on 'Ok' followed by 'Apply' or 'Ok'. This way the Acrobat Reader icon is added to the Application Object.



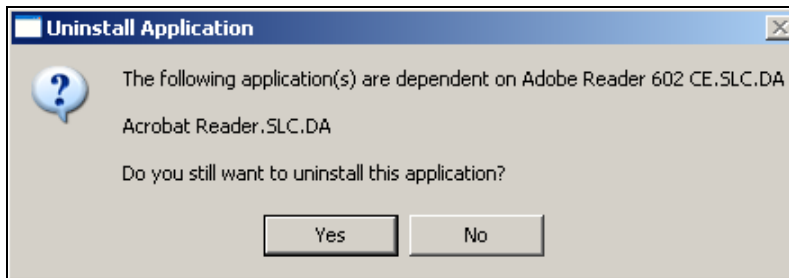
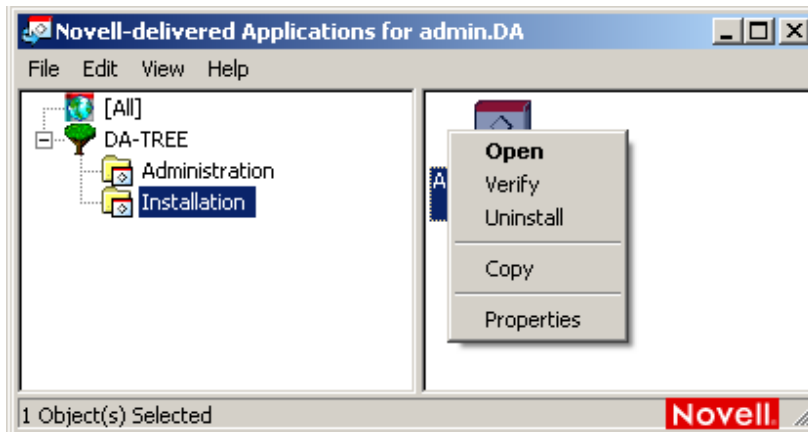
30. Link the 'Acrobat Reader' application object to the 'Application' folder and then click on 'Ok':



31. Refresh your NAL, click on the 'Applications' folder in the NAL and launch 'Acrobat Reader'. What kind of screen comes up when the Acrobat Reader has been started? Why?

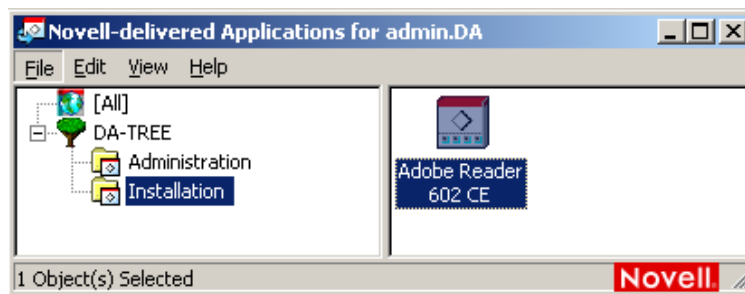
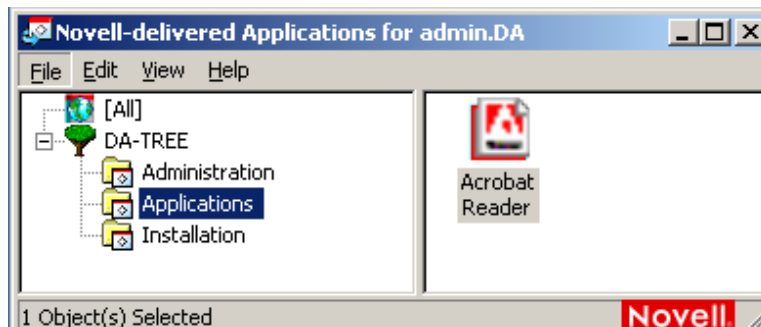


32. 'Uninstall' the 'Acrobat Reader 602 CE' Application Object. Ignore the Application Dependency warning.

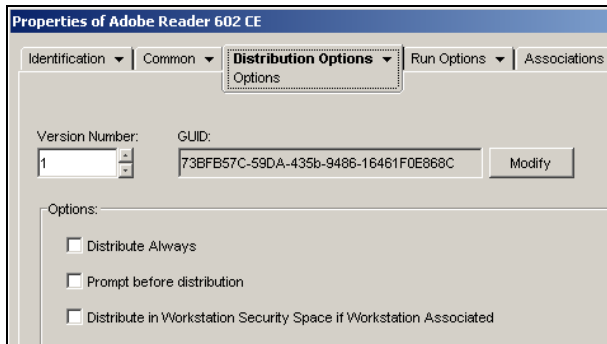


33. Click on the 'Applications' folder in the NAL. In the right part of the NAL screen you will find an 'Acrobat Reader' icon. If you click on that NAL icon, because of the application dependency, the NAL will first install the Acrobat Reader by using the 'Acrobat Reader 602 CE' Application Object.

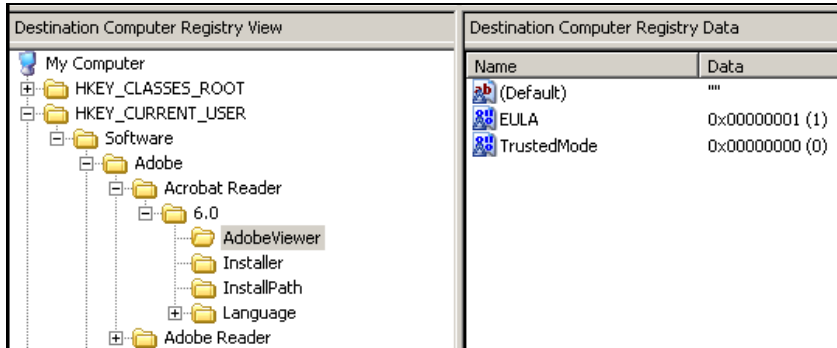
After a successful installation 'C:\Program Files\Adobe\Acrobat 6.0 CE\Reader\AcroRd32.exe' will be available on your system and the Acrobat Reader will launch. The next time when you want to start 'Acrobat Reader' NAL will know that the 'Acrobat Reader 602 CE' Application Object has been installed and will start the Acrobat Reader directly.



34. By using this technique of chaining an application object which only launches the executable of an application with an application object based on the Windows Installer installation object, you can benefit from specific Windows Installer features. E.g. when you change the Transform file you only have to raise the Version Number of the Application Object which installs the application. Next time when an user starts the application, a reinstall (which then uses the adjusted Transform file) will then be executed.



35. Change the 'F:\Install\Acrobat Reader 6.02\Adobe Reader 6.0.2 CE.mst Transform file' by changing the EULA to '0x00000001' (if you don't know where to change it, take a look at item 10).

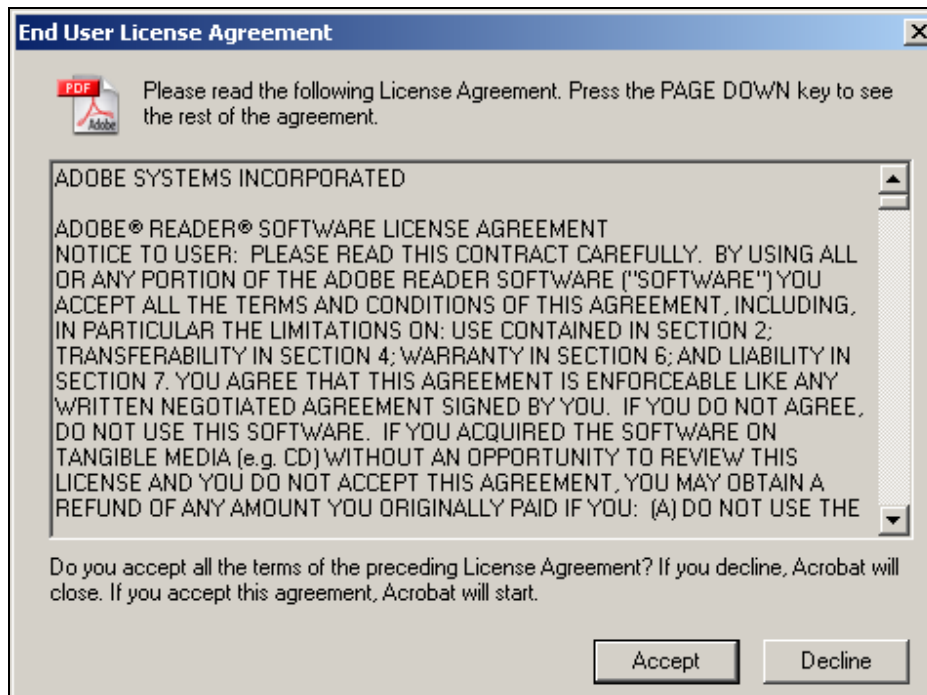


36. Change the Version Number of the 'Acrobat Reader 602 CE' Application Object to '2'. Refresh your NAL and launch 'Acrobat Reader'.

## Windows Installer, Novell ZENworks and InstallShield AdminStudio courseware

37. Because we imported a registry setting for agreeing the license agreement up front, at first launch the Acrobat Reader will not show the 'End User License Agreement' like we saw when working on item 31.

Before:



After:

