

# Is It Possible To Install Support Pack 2 While Installing Novell Linux Desktop 9?

Novell Cool Solutions Tip

By [Joe Harmon](#)

## Applies To:

- Novell Linux Desktop 9

## Solution:

1. Yes, it is possible to install Novell Linux Desktop (NLD) 9 and Support Pack 2 (SP2) at the same time. It is required that you have all the shipping CDs and SP2 CDs during the install. If you are using the 64 bit version, you will have to have the SP1 CDs and the SP2 CDs because the 64 bit version didn't come out until SP1. Therefore the SP1 CDs are the shipping version.

Name	Size	
NLD9-i386-CD1.iso	649.6 MB	<a href="#">→ download</a>
NLD9-i386-CD2.iso	650.9 MB	<a href="#">→ download</a>
NLD9-i386-CD3.iso	579.1 MB	<a href="#">→ download</a>
NLD9-i386-SP2-CD1.iso	635.3 MB	<a href="#">→ download</a>
NLD9-i386-SP2-CD2.iso	644.0 MB	<a href="#">→ download</a>
NLD9-i386-SP2-CD3.iso	648.3 MB	<a href="#">→ download</a>
nld9-vmwarews5-vm.zip	1.4 GB	<a href="#">→ download</a>
NLD9-x86_64-SP1-CD1.iso	647.9 MB	<a href="#">→ download</a>
NLD9-x86_64-SP1-CD2.iso	646.7 MB	<a href="#">→ download</a>
NLD9-x86_64-SP1-CD3.iso	640.2 MB	<a href="#">→ download</a>
NLD9-x86_64-SP2-CD1.iso	609.9 MB	<a href="#">→ download</a>
NLD9-x86_64-SP2-CD2.iso	576.3 MB	<a href="#">→ download</a>
Install instructions and MD5 values		<a href="#">→ view</a>

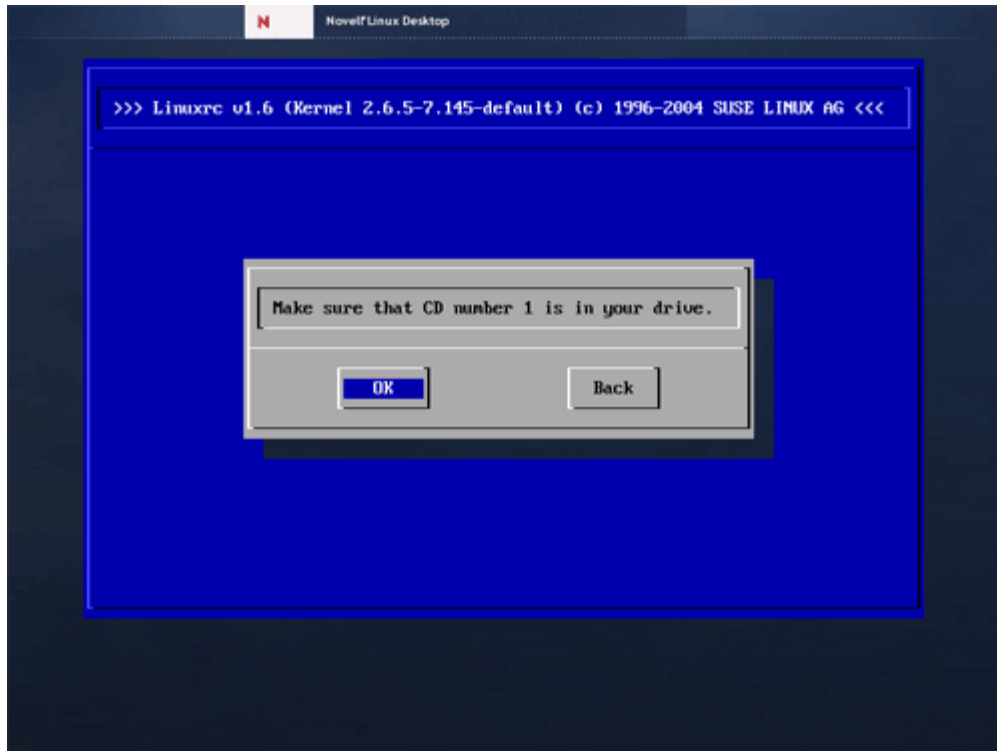
Platforms  
SUSE LINUX

Localizations  
Portuguese (Brazilian), Chinese (Simplified), Chinese (Traditional), English, French, German, Italian, Spanish

I am closest to: [Dublin, Ireland, EMEA](#) [Salt Lake City, UT, USA](#)

**Reminder:** By downloading this product, you reaffirm your agreement to comply with the export laws of the United States and those of other countries.

2. Once you have the correct CDs, place CD1 of SP2 into your CDROM drive. Booting off the Support Pack 1 CD or DVD will trigger the overlay installation.
3. When the installation process starts, you will be prompted to put in CD1. This can be confusing because you already have CD1 for SP2 in the drive. What it is asking for is the shipping version of CD1.



4. The rest of the installation process is outlined in the article: [Novell Linux Desktop Overview: Installation](#). During the installation you will be asked to switch CDs a few more times, but other than that you should be good to go.

