

How to Install NLD 9 SP2 from a DVD or CDs

Novell Cool Solutions Feature

By [Joe Harmon](#)

Applies To:

- Novell Linux Desktop 9

Assumptions:

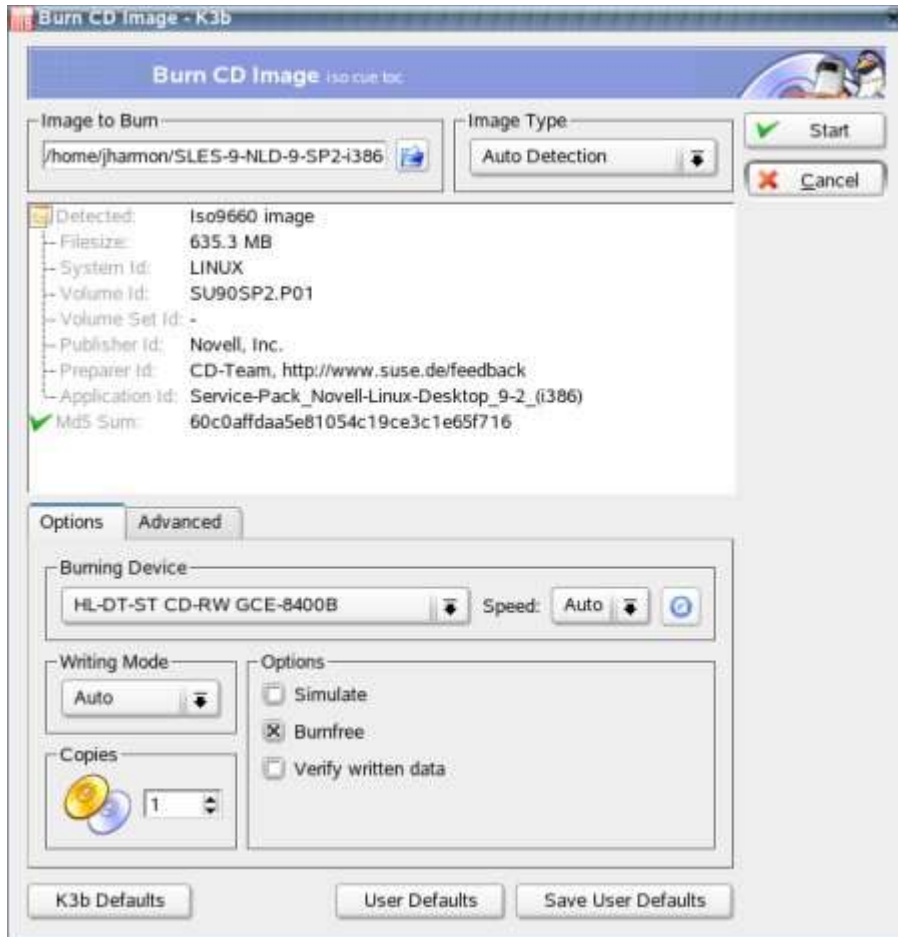
It is assumed that you already have Novell Linux Desktop (NLD) 9 installed as and that you are only applying Support Pack 2. If you are trying to install Support Pack 2 and Novell Linux Desktop 9 at the same time, then please see the following article: [Is It Possible To Install Support Pack 2 While Installing Novell Linux Desktop 9?](#)

Solution:

1. [Download Support Pack 2](#) ISO's from Novell's download site.

Name	Size	
NLD9-i386-CD1.iso	649.6 MB	→ download
NLD9-i386-CD2.iso	650.9 MB	→ download
NLD9-i386-CD3.iso	579.1 MB	→ download
NLD9-i386-SP2-CD1.iso	635.3 MB	→ download
NLD9-i386-SP2-CD2.iso	644.0 MB	→ download
NLD9-i386-SP2-CD3.iso	648.3 MB	→ download
nld9-vmwarews5-vm.zip	1.4 GB	→ download
NLD9-x86_64-SP1-CD1.iso	647.9 MB	→ download
NLD9-x86_64-SP1-CD2.iso	646.7 MB	→ download
NLD9-x86_64-SP1-CD3.iso	640.2 MB	→ download
NLD9-x86_64-SP2-CD1.iso	609.9 MB	→ download
NLD9-x86_64-SP2-CD2.iso	576.3 MB	→ download
Install instructions and MD5 values		→ view
Platforms		
SUSE LINUX		
Localizations		
Portuguese (Brazilian), Chinese (Simplified), Chinese (Traditional), English, French, German, Italian, Spanish		
I am closest to: Dublin, Ireland, EMEA Salt Lake City, UT, USA		
Reminder: By downloading this product, you reaffirm your agreement to comply with the export laws of the United States and those of other countries.		

2. Burn the ISOs to CDs. If you downloaded these to your NLD machine, you can use K3B to burn the ISO images. To do this, launch K3B and choose **Burn CD Image** from the **Tools | CD** menu.



3. Insert CD1 into your workstation. You should receive an automatic prompt showing that there is a Support Pack to install. Choose YES to start the installation process.

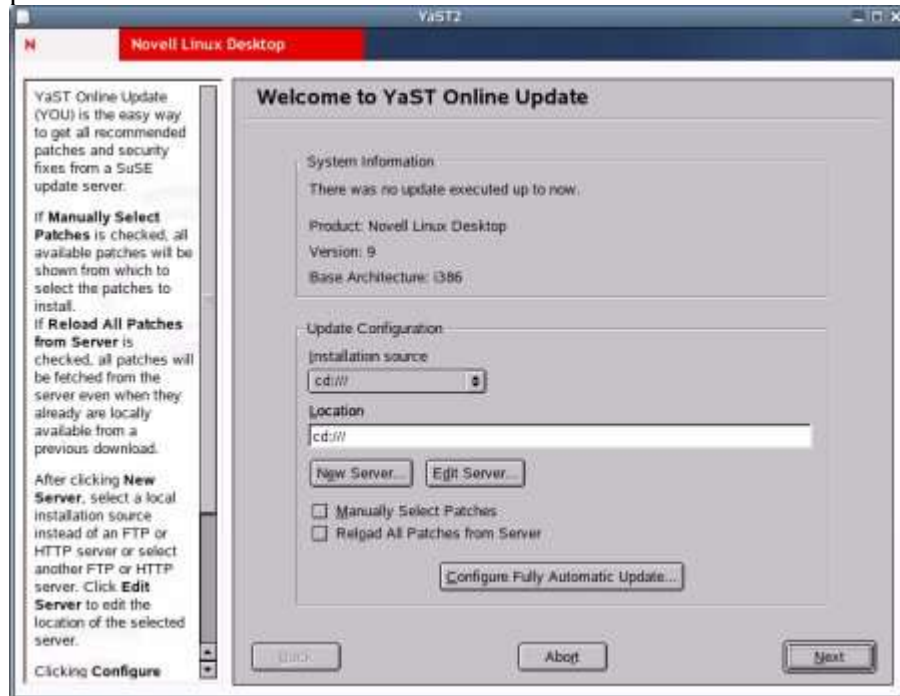


Note: If you don't receive the automatic prompt as described above, you can start the same process by going into the YaST2 utility and under the SOFTWARE option, choose the PATCH CD UPDATE option.

4. You will be prompted to login with roots password.



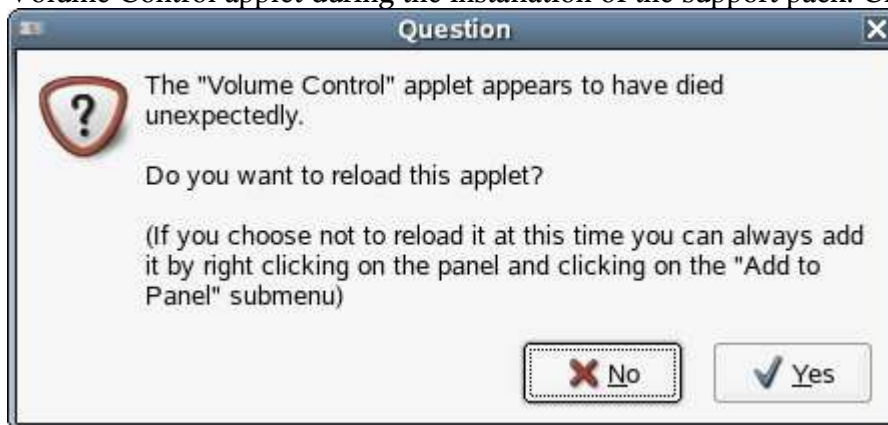
5. From the YaST Online Update screen, you have the option of whether you want to choose **Manually Select Patches** or **Reload All Patches from Server**. In this example the options will remain unchecked so that it will automatically apply the patches.



6. Depending on the packages you have installed, you may be prompted to stop certain services before the Support Pack can continue.



7. If you are using GNOME as your desktop, you will be prompted to reload your Volume Control applet during the installation of the support pack. Click **Yes**.



8. Depending on the packages installed, you may be prompted for additional support pack CDs.



9. The last step is to reboot your computer. There are not many things that require a reboot on Linux. However if the kernel is updated, you will need to reboot the workstation in order to use that new kernel.