

Checking for a Support Pack on a Linux Desktop or Server

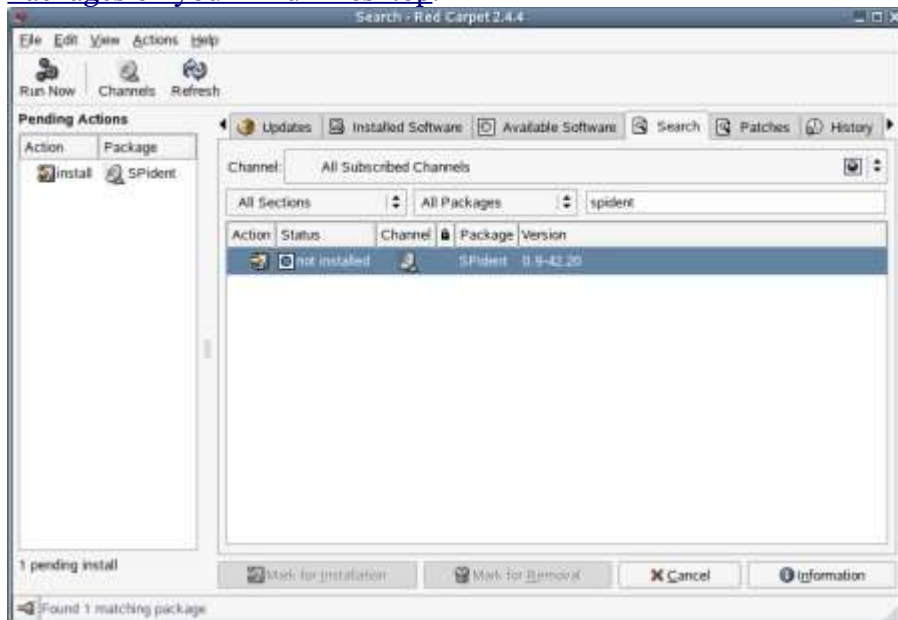
Applies To:

- Novell Linux Desktop 9
- SUSE LINUX Enterprise Server 9
- Open Enterprise Server

Solution:

***Note:** There is an application that tests the current patch level of your system by querying against a specific set of packages and their versions. The package is called SPident and it is installed on SUSE LINUX Enterprise Server (SLES) 9 and Open Enterprise Server (OES) by default. It is not installed on Novell Linux Desktop (NLD) 9 by default because it didn't ship with NLD until Support Pack 2.*

1. Open a terminal.
2. Verify that you have the SPident package installed by typing **rpm -qa SPident** within the terminal. If you show it being installed, then skip to step 4. If it is not installed then continue on with step 3.
3. To install SPident you can use either Red Carpet or Yast2, depending on the OS. Since NLD was used for this example, I will be installing with Red Carpet. Either way, both scenarios are outlined in the following document: [How to install Packages on your Linux Desktop.](#)



4. Once you verified that the package has been installed, you are ready to use the SPident utility. There are basically five bits of information that can be displayed using SPident. These bits of information are obtained by increasing the verbosity of the utility (using the **-v** command) as shown below.

SPident gives us general information as to whether or not the support pack is up to date.

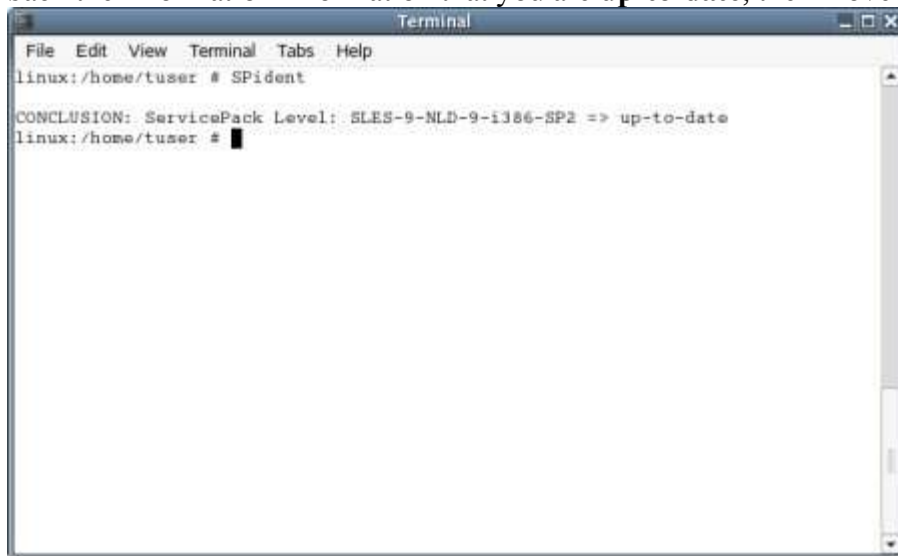
SPident -v gives us the same information as **SPident**, plus a summary table showing whether or not there are any conflicts or updates.

SPident -vv gives us the same information as **SPident** and **SPident -v**, plus the individual file names of conflicting packages. **Note:** *Conflicting packages arise when a newer version was expected but was never installed. This is indicated by a minus symbol (-) in front of the package name.*

SPident -vvv gives us the same information as **SPident**, **SPident -v**, and **SPident -vv**, plus the individual file name of any updated packages. **Note:** *Updated packages arise when the installed version of a package is newer than the expected version. This is indicated by a plus symbol (+) in front of the package name.*

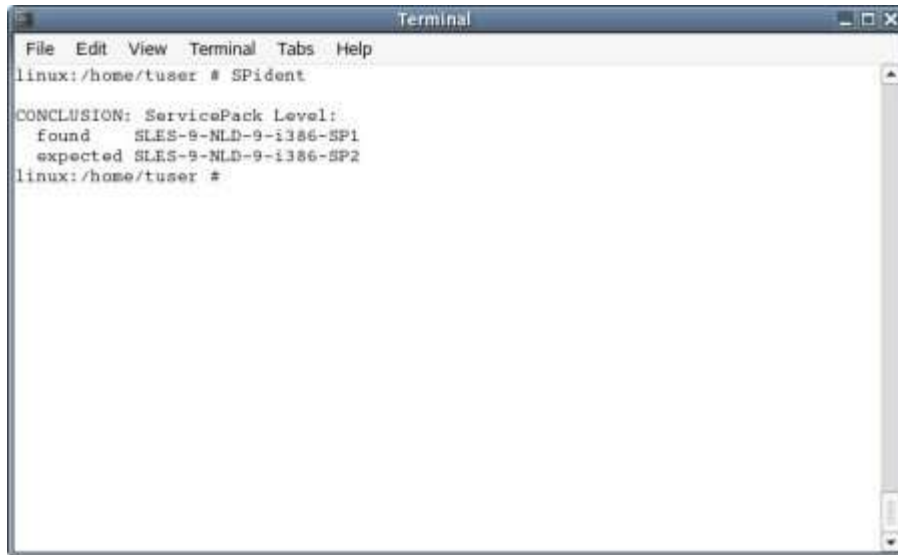
SPident -vvvv gives us the same information as **SPident**, **SPident -v**, **SPident -vv** and **SPident -vvv**, plus the individual file name of every matched package. **Note:** *A matched package is when the installed version and expected version are the same. This is indicated by an equal symbol (=) in front of the package name.*

5. Let's start by typing **SPident** within a terminal window. It should display information determining whether or not your server or workstation is up to date. If you get back information that you are **up-to-date**, then stop here. If you didn't get back the information that you are **up-to-date**, then move on to step 6.



```
Terminal
File Edit View Terminal Tabs Help
linux:/home/tuser # SPident
CONCLUSION: ServicePack Level: SLES-9-NLD-9-i386-SP2 => up-to-date
linux:/home/tuser #
```

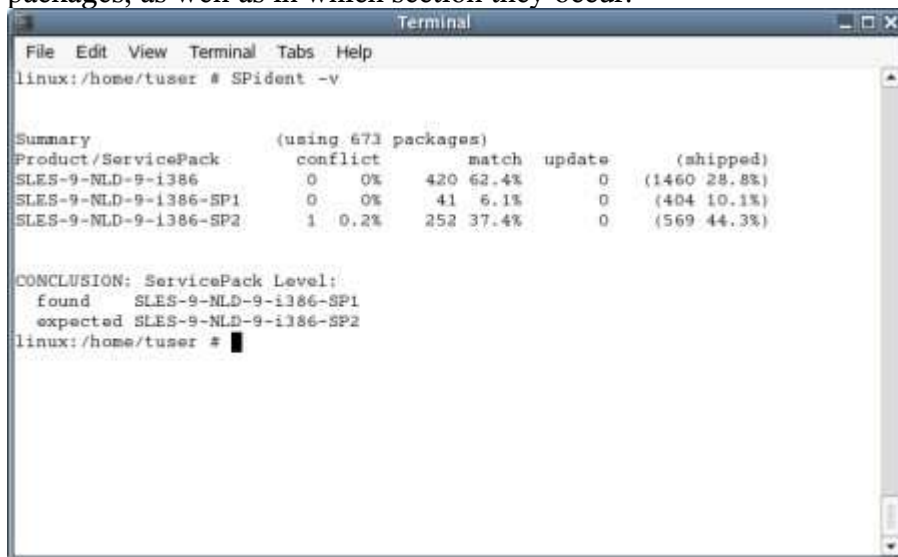
6. Let's take the example of a support pack that was not fully installed. When the **SPident** command was run in this case, it should show information on what it **found** and what it **expected**. In this example it found that SP1 is installed, but that it expected SP2. Now it wouldn't have expected SP2 if components of SP2 had not been installed. So due to this fact, we know we have a partial install.



```
linux:/home/tuser # SPident

CONCLUSION: ServicePack Level:
  found    SLES-9-NLD-9-i386-SP1
  expected SLES-9-NLD-9-i386-SP2
linux:/home/tuser #
```

7. We can obtain more information by typing **SPident -v** in the terminal. This option creates a table of information showing the number of conflicting and updated packages, as well as in which section they occur.



```
linux:/home/tuser # SPident -v

Summary (using 673 packages)
Product/ServicePack  conflict  match  update  (shipped)
SLES-9-NLD-9-i386    0 0%    420 62.4%  0 (1460 28.8%)
SLES-9-NLD-9-i386-SP1 0 0%    41  6.1%   0 (404 10.1%)
SLES-9-NLD-9-i386-SP2 1 0.2%  252 37.4%  0 (569 44.3%)

CONCLUSION: ServicePack Level:
  found    SLES-9-NLD-9-i386-SP1
  expected SLES-9-NLD-9-i386-SP2
linux:/home/tuser #
```

8. The table in step 7 has some useful information, but it doesn't show the names of the conflicting packages. To see the names of the individual conflicting packages, let's add another "v" to the command to increase the verbosity. Type **SPident -vv** in the terminal. In this example it shows that there is an older version of glibc than is found in SP2. Remember that conflicting packages are denoted by a minus symbol (-).

```
Terminal
File Edit View Terminal Tabs Help
linux:/home/tuser # SPident -vv

Summary
      (using 673 packages)
Product/ServicePack  conflict      match  update      (shipped)
SLES-9-NLD-9-i386    0 0%      420 62.4%    0 (1460 28.8%)
SLES-9-NLD-9-i386-SP1 0 0%      41  6.1%     0 (404 10.1%)
SLES-9-NLD-9-i386-SP2 1 0.2%    252 37.4%    0 (569 44.3%)
- glibc-2.3.3-98.47

Legend for Package Details:
- conflicting package (expected version!)

CONCLUSION: ServicePack Level:
found      SLES-9-NLD-9-i386-SP1
expected   SLES-9-NLD-9-i386-SP2
linux:/home/tuser # █
```

9. You can continue to add more v's to the SPident command if you need more information. Just as **SPident -vv** showed conflicting packages in step 8, **SPident -vvv** will not only show conflicting packages, but updated packages as well. These are packages that are newer than the SP2 package base. They are denoted by a plus symbol (+).

```

Terminal
File Edit View Terminal Tabs Help
jharmon@linuxjoe:~> SPident -vvv

Summary (using 701 packages)
Product/ServicePack conflict match update (shipped)
SLES-9-NLD-9-i386 0 0% 421 60.1% 16 (1460 28.8%)
+ MozillaFirefox-1.0.6-4.2.i586
+ MozillaFirefox-translations-1.0.6-4.2.i586
+ acroread-7.0.0-5.4.i586
+ contact-lookup-applet-0.6-11.1.i586
+ evolution-2.2.3.0.200508040340-0.snap.novell.0.1.i586
+ evolution-data-server-1.2.3.0.200508040340-0.snap.novell.0.1.i586
+ evolution-webcal-2.3.90.0.200508040340-0.snap.novell.0.1.i586
+ gal2-2.4.3.0.200508040340-0.snap.novell.0.1.i586
+ gnome-panel-2.6.2-99.1.i586
+ gnutls-1.0.8-26.4.i586
+ gtkhtml2-3.6.2.0.200508040340-0.snap.novell.0.1.i586
+ kdelibs3-3.2.1-44.55.i586
+ libsoup-2.2.4.0.200508040340-0.snap.novell.0.1.i586
+ net-snmp-5.1-80.19.i586
+ ypbind-1.18-1.7.i586
+ xlib-1.2.1-70.12.i586
SLES-9-NLD-9-i386-SP1 0 0% 40 5.7% 10 (404 9.9%)
+ MozillaFirefox-1.0.6-4.2.i586
+ MozillaFirefox-translations-1.0.6-4.2.i586
+ evolution-2.2.3.0.200508040340-0.snap.novell.0.1.i586
+ evolution-data-server-1.2.3.0.200508040340-0.snap.novell.0.1.i586
+ gal2-2.4.3.0.200508040340-0.snap.novell.0.1.i586
+ gnome-panel-2.6.2-99.1.i586
+ gtkhtml2-3.6.2.0.200508040340-0.snap.novell.0.1.i586
+ libsoup-2.2.4.0.200508040340-0.snap.novell.0.1.i586
+ net-snmp-5.1-80.19.i586
+ ypbind-1.18-1.7.i586
SLES-9-NLD-9-i386-SP2 0 0% 243 34.7% 13 (569 42.7%)
+ MozillaFirefox-1.0.6-4.2.i586
+ MozillaFirefox-translations-1.0.6-4.2.i586
+ acroread-7.0.0-5.4.i586
+ evolution-2.2.3.0.200508040340-0.snap.novell.0.1.i586
+ evolution-data-server-1.2.3.0.200508040340-0.snap.novell.0.1.i586
+ gal2-2.4.3.0.200508040340-0.snap.novell.0.1.i586
+ gnome-panel-2.6.2-99.1.i586
+ gtkhtml2-3.6.2.0.200508040340-0.snap.novell.0.1.i586
+ kdelibs3-3.2.1-44.55.i586
+ libsoup-2.2.4.0.200508040340-0.snap.novell.0.1.i586
+ net-snmp-5.1-80.19.i586
+ ypbind-1.18-1.7.i586
+ xlib-1.2.1-70.12.i586
Unknown 37 5.3%

Legend for Package Details:
- conflicting package (expected version!)
+ updated package (version as found)

CONCLUSION: ServicePack Level: SLES-9-NLD-9-i386-SP2 + "updates" => up-to-date
jharmon@linuxjoe:~>

```

10. **SPident -vvvv** will show conflicting, updated, and and matching packages. The matching packages are denoted by an equal symbol (=).

```
Terminal
File Edit View Terminal Tabs Help
+ net-snmp-5.1-80.19.i586
+ ypbind-1.10-1.7.i586
SLES-9-NLD-9-i386-SP2      0  0%   243 34.7%   13  (569 42.7%)
= fCClient-8.0-1.9.i586
= ImageMagick-5.5.7-225.15.i586
= OpenOffice_org-1.1.4-0.8.i586
= OpenOffice_org-Quickstarter-1.0-459.5.i586
= OpenOffice_org-en-1.1.4-0.8.i586
= OpenOffice_org-en-help-1.1.4-0.8.i586
= OpenOffice_org-gnome-1.1.4-0.8.i586
= OpenOffice_org-kde-1.1.4-0.8.i586
= RealPlayer-10.0.5-0.1.i586
= SuSEfirewall2-3.1-310.12.noarch
= XFree86-4.3.99.902-43.48.i586
= XFree86-Mesa-4.3.99.902-43.48.i586
= XFree86-Xvnc-4.3.99.902-43.48.i586
= XFree86-fonts-75dpi-4.3.99.902-43.48.i586
= XFree86-fonts-scalable-4.3.99.902-43.48.i586
= XFree86-libs-4.3.99.902-43.48.i586
= XFree86-server-4.3.99.902-43.48.i586
= XFree86-server-glx-4.3.99.902-43.48.i586
= aaa_base-9-29.35.i586
= alsa-1.0.9-2.3.i586
= attr-2.4.16-1.5.i586
```