

Novell® Cloud Manager

Build and Manage a Private Cloud



Novell® Cloud Manager: The Simplest Way to Build and Manage your Cloud



WorkloadIQ is our answer to intelligent workload management, an emerging industry arising from the intersection of dynamic infrastructure, virtualization, identity management and the discipline of software appliance development.

Transform your virtual infrastructure into a true cloud computing environment with Novell® Cloud Manager, a WorkloadIQ™ product.

Built to operate with the VMware*, Hyper-V* or Xen* servers you already own, Novell Cloud Manager automates the approval workflow to create live workloads provisioned from service catalog templates complete with pricing and service levels.

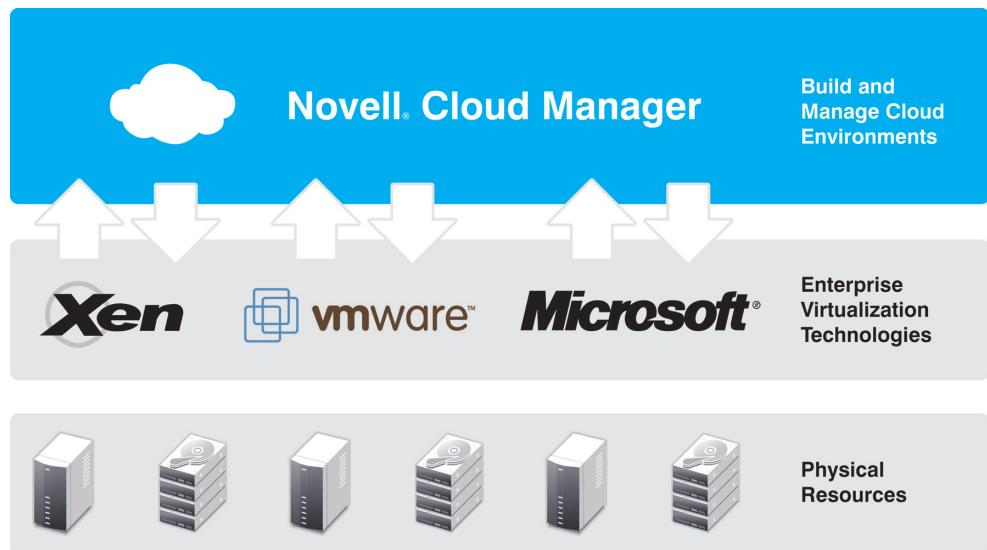


Figure 1. Novell Cloud Manager lets you build a cloud environment using the virtualization technologies you already own and use in your data center today.

Novell Cloud Manager dramatically accelerates service delivery by provisioning workloads on demand in a secure and compliant manner. Traditional virtualization solutions once thought to be the solution to such problems as limited data center space, underutilized servers, and runaway power and cooling costs, have created almost as many problems as they solve. The promise of an agile, cheap and flexible virtual infrastructure has been replaced with the realities of

SLA challenges and virtual machine sprawl, with far too many bloated virtual machines allocated far more resources than they need.

With Novell Cloud Manager, you can build a secure, compliant cloud computing environment on top of the virtual infrastructure and resources you have today. Architected from the ground up for massive scalability, Novell Cloud Manager is the perfect solution for enterprises and service providers of any size.

Delivers Business Services Faster with Automated On-demand Workload Provisioning

Novell Cloud Manager fully automates the process of provisioning new workloads. More than just managing the request and approval workflow, Novell Cloud Manager automatically creates and deploys workloads into the virtual environment based on a service catalog of pre-defined workload templates.

Template-based provisioning standardizes workloads with the corporate service catalog and ensures adherence to corporate policy. If necessary, customized configuration changes, such as increased memory or disk space, can be made at the time of the request. Novell Cloud Manager even determines the optimum location to deploy the new workload. Workload provisioning times are dramatically shortened, making the entire process of deploying new business services both faster and more efficient.

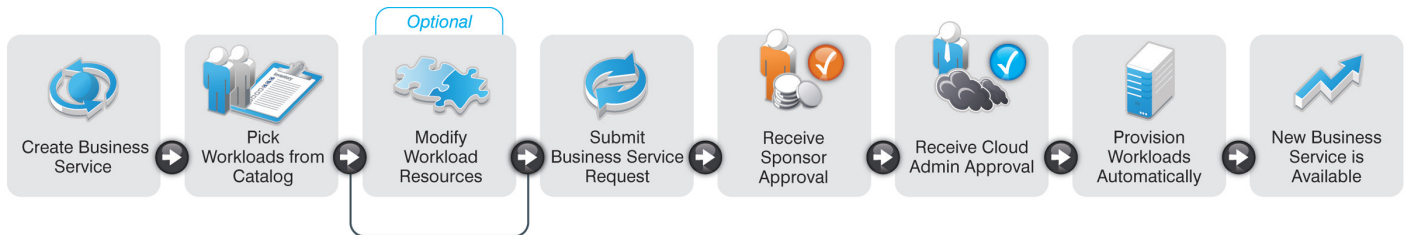


Figure 3. Novell Cloud Manager creates an automated and transparent workflow based on your corporate approval policies.

Establishes a Transparent Provisioning Workflow

For many organizations, the workload provisioning process is a black box. The request goes in, and then days, weeks, or even months later, the workload is provisioned—or perhaps denied. Novell Cloud Manager opens up this process, establishing a transparent workflow that ensures visibility every step of the way, from initial request until the workload has been deployed.

Provides a Secure Self-service Request Portal

Novell Cloud Manager features a self-service request portal that customizes itself based on the user's profile. IT administrators can predetermine which workload templates individuals or groups can select from the catalog, and whether they can modify the base templates. The portal interface dynamically displays available configuration options, ensuring that all workload requests are standardized and align with IT policy and security privileges.

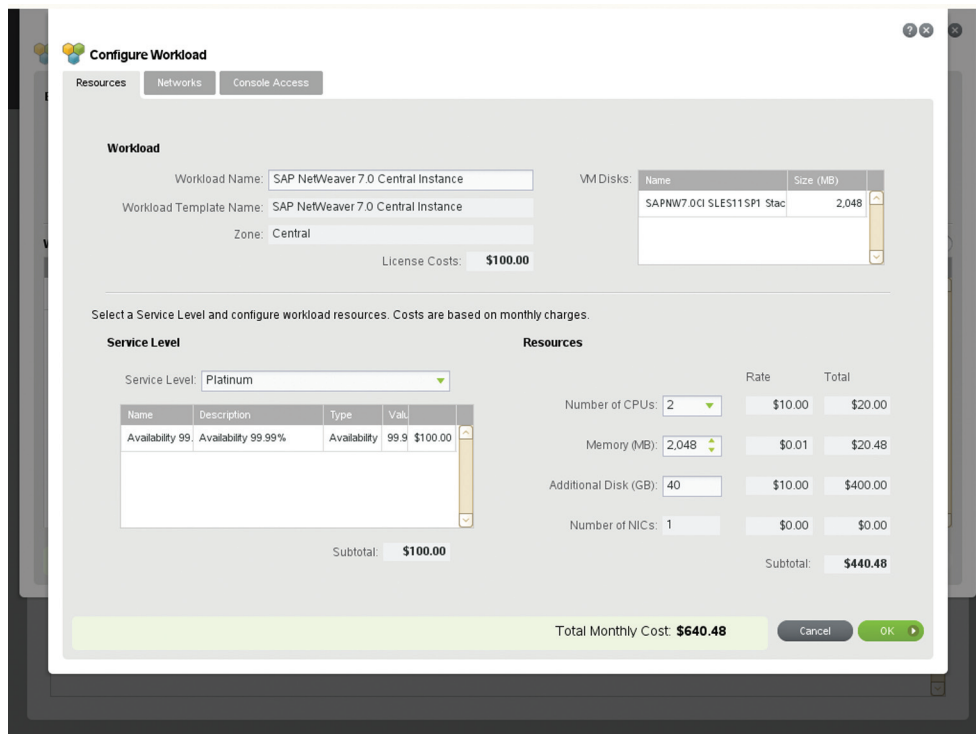


Figure 4. When an application owner requests a new workload, Novell Cloud Manager displays the price of base workload, as well as the costs associated with available service levels and additional resources.

Purges Unused and Expired Virtual Machines

Many types of virtual machines, especially those used for evaluation, test and development purposes, are temporary by nature. Many organizations have dozens or hundreds of unused virtual machines, each of which

still consumes valuable allocations of CPU, memory and disk resources. Novell Cloud Manager prevents these workloads from permanently clogging up the virtual farm with built-in expiration dates, and allows you to purge expired virtual machines to reclaim and redeploy their resources.

Integrates with Best-in-Class Security and Business Service Management

A built-in connector to Novell Sentinel™ allows security managers to correlate events coming from Novell Cloud Manager with other events that are detected in the cloud or any other Sentinel-aware location. Novell Cloud Manager also integrates with Novell Operations Center to deliver unmatched visibility into business efficiency.

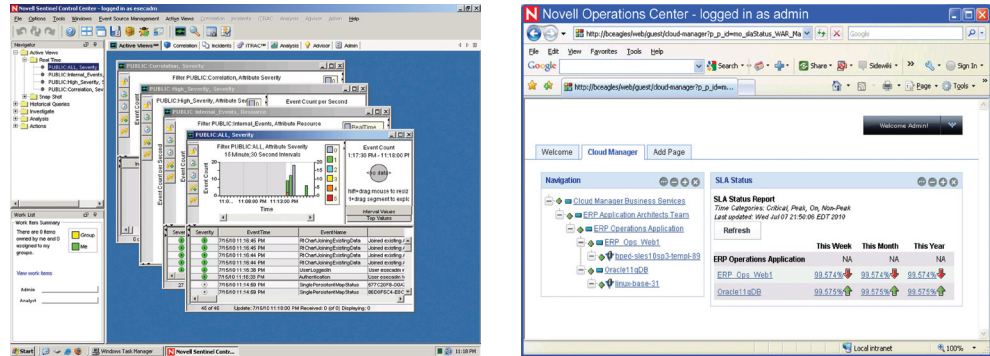


Figure 5. Novell Cloud Manager features extensible workload orchestration that easily integrates with your data center management environment.

Creates a Secure and Compliant Environment

Novell Cloud Manager can help you build a secure, compliant cloud computing environment while leveraging your existing virtual

infrastructure and resources. It provides the simplest way for you to build and manage your cloud. To get started reaping the benefits of Novell Cloud Manager, contact your Novell representative today.

Key Features and Differentiators

- Minimize manual effort by creating templates for common workload types
- Control resource usage by specifying user and workload policies
- Track resource utilization to control infrastructure expenses
- Reduce the cost of providing new business services by streamlining processes
- Designed for today's mixed IT environments; works across all major hypervisors
- Massively scalable to public cloud capacity
- Workflow is aligned to ITIL roles and supports flexible service level management
- Anywhere, anytime access from the Novell Cloud Manager mobile iPhone app
- Integration with Novell Sentinel for event correlation and Novell Operations Center for increased visibility into business efficiency

Supported Environments

Hypervisors

- VMware vSphere 4/ESX 4/ESXi 4 (managed via vCenter)
- VMware ESX/ESXi 3.5 (managed via vCenter)
- Windows* Server 2008 R2 Hyper-V
- Xen (as part of SUSE® Linux Enterprise Server 10 or 11)

Workloads

- SUSE Linux Enterprise Server 11
- SUSE Linux Enterprise Server 10
- SUSE Linux Enterprise Server 9
- Red Hat* Enterprise Linux 5
- Red Hat Enterprise Linux 4
- Windows Server 2008
- Windows Server 2003

Minimum System Requirements

Novell Cloud Manager can run on a single server with the following configuration:

- 40 GB disk space, 4 GB RAM, 4 Pentium-class CPU cores
- Client Browser: Internet Explorer 8 or higher/Mozilla Firefox 3.5 or higher, 1024 x 768 display resolution or higher

Recommended System Requirements

For optimal performance, Novell recommends that Novell Cloud Manager be installed in a two-server configuration:

- Novell Cloud Manager Orchestration Server: 20 GB disk space, 3 GB RAM, Xeon dual-core or higher[†], SUSE Linux Enterprise Server 10 or 11
- Novell Cloud Manager Application Server: 20 GB disk space, 4 GB RAM, Xeon dual-core or higher[†], SUSE Linux Enterprise Server 10 or 11
- Client Browser: Internet Explorer 8 or higher/Mozilla Firefox 3.5 or higher, 1024 x 768 display resolution or higher

[†]two vcores if installed as a VM.

Note: Specifications subject to change without notice.

Please contact Novell for additional details on platform support, product specifications and system requirements.

About Novell

Through our infrastructure software and ecosystem of partnerships, Novell harmoniously integrates mixed IT environments, allowing people and technology to work as one. We deliver the best-engineered, most interoperable Linux* platform and a portfolio of integrated IT management software that

help customers worldwide reduce cost, complexity and risk. Because of our 25 years of experience and our vision of interoperability and flexibility, we deliver powerful, next-generation business infrastructures that enable our customers to stay competitive.

Novell® Making IT Work As One™

