

Novell Developer Kit

www.novell.com

November 29, 2006

TESTCONSOLE

N

Novell®

Legal Notices

Novell, Inc., makes no representations or warranties with respect to the contents or use of this documentation, and specifically disclaims any express or implied warranties of merchantability or fitness for any particular purpose. Further, Novell, Inc., reserves the right to revise this publication and to make changes to its content, at any time, without obligation to notify any person or entity of such revisions or changes.

Further, Novell, Inc., makes no representations or warranties with respect to any software, and specifically disclaims any express or implied warranties of merchantability or fitness for any particular purpose. Further, Novell, Inc., reserves the right to make changes to any and all parts of Novell software, at any time, without any obligation to notify any person or entity of such changes.

Any products or technical information provided under this Agreement may be subject to U.S. export controls and the trade laws of other countries. You agree to comply with all export control regulations and to obtain any required licenses or classification to export, re-export, or import deliverables. You agree not to export or re-export to entities on the current U.S. export exclusion lists or to any embargoed or terrorist countries as specified in the U.S. export laws. You agree to not use deliverables for prohibited nuclear, missile, or chemical biological weaponry end uses. Please refer to www.novell.com/info/exports/ for more information on exporting Novell software. Novell assumes no responsibility for your failure to obtain any necessary export approvals.

All files provided in this release are subject to the Novell Developer License Agreement, which can be found in the license.txt file provided in this download.

Copyright © 1993-2005 Novell, Inc. All rights reserved. No part of this publication may be reproduced, photocopied, stored on a retrieval system, or transmitted without the express written consent of the publisher.

Novell, Inc., has intellectual property rights relating to technology embodied in the product that is described in this document. In particular, and without limitation, these intellectual property rights may include one or more of the U.S. patents listed at <http://www.novell.com/company/legal/patents/> and one or more additional patents or pending patent applications in the U.S. and in other countries.

Novell, Inc.
404 Wyman Street, Suite 500
Waltham, MA 02451
U.S.A.
www.novell.com

Online Documentation: To access the online documentation for this and other Novell developer products, and to get updates, see developer.novell.com/ndk. To access online documentation for Novell products, see www.novell.com/documentation.

Novell Trademarks

AppNotes is a registered trademark of Novell, Inc.

AppTester is a registered trademark of Novell, Inc. in the United States.

ASM is a trademark of Novell, Inc.

Beagle is a trademark of Novell, Inc.

BorderManager is a registered trademark of Novell, Inc.

BrainShare is a registered service mark of Novell, Inc. in the United States and other countries.

C3PO is a trademark of Novell, Inc.

Certified Novell Engineer is a service mark of Novell, Inc.

Client32 is a trademark of Novell, Inc.

CNE is a registered service mark of Novell, Inc.

ConsoleOne is a registered trademark of Novell, Inc.

Controlled Access Printer is a trademark of Novell, Inc.

Custom 3rd-Party Object is a trademark of Novell, Inc.

DeveloperNet is a registered trademark of Novell, Inc., in the United States and other countries.

DirXML is a registered trademark of Novell, Inc.

eDirectory is a trademark of Novell, Inc.

Exceleator is a trademark of Novell, Inc.

exteNd is a trademark of Novell, Inc.

exteNd Director is a trademark of Novell, Inc.

exteNd Workbench is a trademark of Novell, Inc.

FAN-OUT FAILOVER is a trademark of Novell, Inc.

GroupWise is a registered trademark of Novell, Inc., in the United States and other countries.

Hardware Specific Module is a trademark of Novell, Inc.

Hot Fix is a trademark of Novell, Inc.

Hula is a trademark of Novell, Inc.

iChain is a registered trademark of Novell, Inc.

Internetwork Packet Exchange is a trademark of Novell, Inc.

IPX is a trademark of Novell, Inc.

IPX/SPX is a trademark of Novell, Inc.

jBroker is a trademark of Novell, Inc.

Link Support Layer is a trademark of Novell, Inc.

LSL is a trademark of Novell, Inc.

ManageWise is a registered trademark of Novell, Inc., in the United States and other countries.

Mirrored Server Link is a trademark of Novell, Inc.

Mono is a registered trademark of Novell, Inc.

MSL is a trademark of Novell, Inc.

My World is a registered trademark of Novell, Inc., in the United States.

NCP is a trademark of Novell, Inc.

NDPS is a registered trademark of Novell, Inc.

NDS is a registered trademark of Novell, Inc., in the United States and other countries.

NDS Manager is a trademark of Novell, Inc.

NE2000 is a trademark of Novell, Inc.

NetMail is a registered trademark of Novell, Inc.

NetWare is a registered trademark of Novell, Inc., in the United States and other countries.

NetWare/IP is a trademark of Novell, Inc.

NetWare Core Protocol is a trademark of Novell, Inc.
NetWare Loadable Module is a trademark of Novell, Inc.
NetWare Management Portal is a trademark of Novell, Inc.
NetWare Name Service is a trademark of Novell, Inc.
NetWare Peripheral Architecture is a trademark of Novell, Inc.
NetWare Requester is a trademark of Novell, Inc.
NetWare SFT and NetWare SFT III are trademarks of Novell, Inc.
NetWare SQL is a trademark of Novell, Inc.
NetWare is a registered service mark of Novell, Inc., in the United States and other countries.
NLM is a trademark of Novell, Inc.
NMAS is a trademark of Novell, Inc.
NMS is a trademark of Novell, Inc.
Novell is a registered trademark of Novell, Inc., in the United States and other countries.
Novell Application Launcher is a trademark of Novell, Inc.
Novell Authorized Service Center is a service mark of Novell, Inc.
Novell Certificate Server is a trademark of Novell, Inc.
Novell Client is a trademark of Novell, Inc.
Novell Cluster Services is a trademark of Novell, Inc.
Novell Directory Services is a registered trademark of Novell, Inc.
Novell Distributed Print Services is a trademark of Novell, Inc.
Novell iFolder is a registered trademark of Novell, Inc.
Novell Labs is a trademark of Novell, Inc.
Novell SecretStore is a registered trademark of Novell, Inc.
Novell Security Attributes is a trademark of Novell, Inc.
Novell Storage Services is a trademark of Novell, Inc.
Novell, Yes, Tested & Approved logo is a trademark of Novell, Inc.
Nsure is a registered trademark of Novell, Inc.
Nterprise is a registered trademark of Novell, Inc., in the United States.
Nterprise Branch Office is a trademark of Novell, Inc.
ODI is a trademark of Novell, Inc.
Open Data-Link Interface is a trademark of Novell, Inc.
Packet Burst is a trademark of Novell, Inc.
PartnerNet is a registered service mark of Novell, Inc., in the United States and other countries.
Printer Agent is a trademark of Novell, Inc.
QuickFinder is a trademark of Novell, Inc.
Red Box is a trademark of Novell, Inc.
Red Carpet is a registered trademark of Novell, Inc., in the United States and other countries.
Sequenced Packet Exchange is a trademark of Novell, Inc.
SFT and SFT III are trademarks of Novell, Inc.
SPX is a trademark of Novell, Inc.
Storage Management Services is a trademark of Novell, Inc.
SUSE is a registered trademark of Novell, Inc., in the United States and other countries.
System V is a trademark of Novell, Inc.
Topology Specific Module is a trademark of Novell, Inc.
Transaction Tracking System is a trademark of Novell, Inc.
TSM is a trademark of Novell, Inc.

TTS is a trademark of Novell, Inc.

Universal Component System is a registered trademark of Novell, Inc.

Virtual Loadable Module is a trademark of Novell, Inc.

VLM is a trademark of Novell, Inc.

Yes Certified is a trademark of Novell, Inc.

ZENworks is a registered trademark of Novell, Inc., in the United States and other countries.

Third-Party Materials

All third-party trademarks are the property of their respective owners.

Contents

About this Guide	9
1 Getting Started	11
1.1 System Requirements	11
1.2 Installing TestConsole	11
1.3 Uninstalling TestConsole	11
1.4 Running TestConsole	12
1.5 TestConsole Window	12
1.5.1 Project Contents	13
1.5.2 Run Queue	14
1.5.3 Project Log	14
2 Using TestConsole	17
2.1 Managing Test Projects	17
2.1.1 Opening a New Test Project	17
2.1.2 Opening an Existing Test Project	17
2.1.3 Saving a Test Project	18
2.1.4 Closing a Test Project	18
2.2 Selecting Test Stations	18
2.3 Testing in Debug Mode	19
2.4 Using Loop Mode	20
2.4.1 Editing the Loop Test List	20
2.4.2 Running the Loop Test List	21
2.5 Setting Preferences	21
2.6 Updating the Products.txt File	22
2.7 Reporting Test Results	24
2.7.1 Entering Product Information	24
2.7.2 Exporting Product Information	25
2.7.3 Importing Product Information	25
2.7.4 Verifying Report Data	26
2.7.5 Generating a Novell Report	28
2.7.6 Viewing or Printing a Summary	29
2.7.7 Clearing a Report	29
A Revision History	31

About this Guide

TestConsole is a Java-based utility used to automate test execution in a testing network or lab. It provides a common interface to plug in the test suites provided by Novell® for testing and certification of hardware, drivers, and software applications.

This guide has the following sections:

- ♦ [Chapter 1, “Getting Started,” on page 11](#)
- ♦ [Chapter 2, “Using TestConsole,” on page 17](#)
- ♦ [“Revision History” on page 31](#)

Audience

This guide is intended for engineers and testers on the Windows* and SUSE® LINUX platforms.

Feedback

We want to hear your comments and suggestions about this manual and the other documentation included with this product. Please use the User Comments feature at the bottom of each page of the online documentation.

Documentation Updates

For the most recent version of the Novell TestConsole Guide, see the [TestConsole Web site \(http://developer.novell.com/ndk/tconsole.htm\)](http://developer.novell.com/ndk/tconsole.htm).

Additional Information

For information about the YES Certification, see the following:

- ♦ [YES Certification on SUSE LINUX \(http://www.novell.com/partners/yes/\)](http://www.novell.com/partners/yes/)
- ♦ [Novell® on Linux \(http://www.novell.com/linux\)](http://www.novell.com/linux)

Documentation Conventions

In this documentation, a greater-than symbol (>) is used to separate actions within a step and items within a cross-reference path.

A trademark symbol (®, ™, etc.) denotes a Novell trademark. An asterisk (*) denotes a third-party trademark.

Getting Started

1

This section covers the following topics:

- ♦ [Section 1.1, “System Requirements,”](#) on page 11
- ♦ [Section 1.2, “Installing TestConsole,”](#) on page 11
- ♦ [Section 1.5, “TestConsole Window,”](#) on page 12

1.1 System Requirements

- ❑ Pentium* 800 MHz or higher workstation with at least 256 MB RAM
- ❑ Static IP connection

1.2 Installing TestConsole

For SUSE Linux

- 1 Download the TestConsole rpm from the [NDK \(http://developer.novell.com/wiki/index.php/TestConsole\)](http://developer.novell.com/wiki/index.php/TestConsole) and change to the download directory.
- 2 At a terminal, enter `rpm -ihv [rpm filename]`
- 3 After the install completes, log out and log in again.

For Windows

- 1 Download `tconsole.exe` from the [NDK \(http://developer.novell.com/wiki/index.php/TestConsole\)](http://developer.novell.com/wiki/index.php/TestConsole) and change to the download directory.
- 2 Execute `tconsole.exe`.
- 3 After the install completes, log out and log in again.

1.3 Uninstalling TestConsole

For SUSE Linux

- 1 Log in as root.
- 2 Open a terminal and enter the following:

```
rpm -e tconsole
```

For Windows

Use the Windows* Uninstall utility.

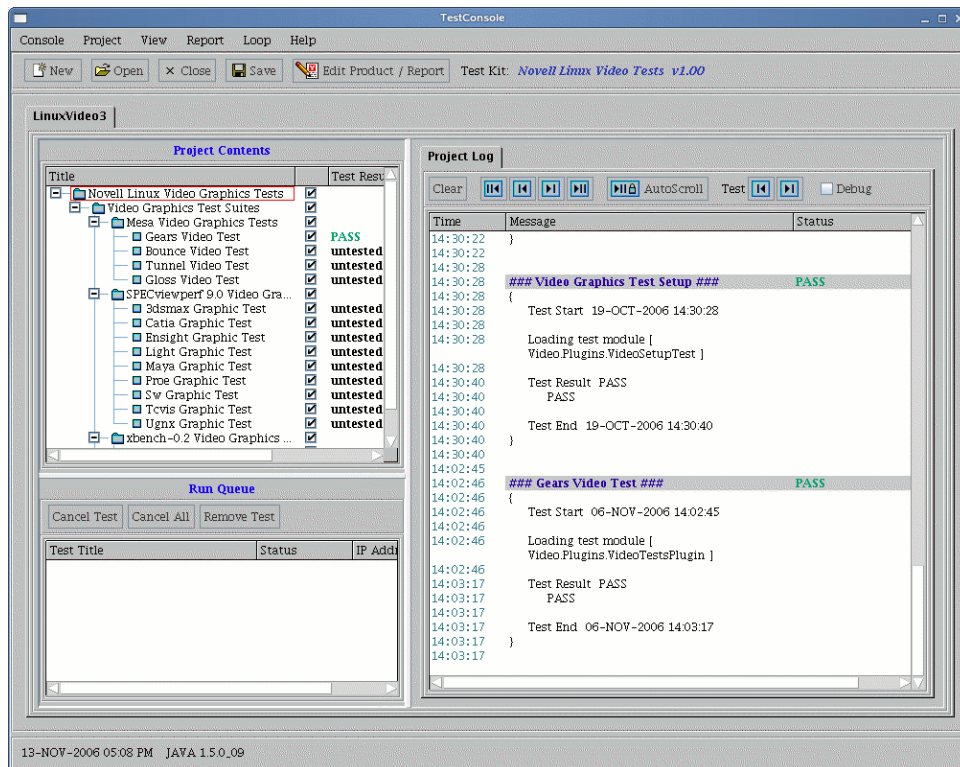
1.4 Running TestConsole

- 1 Double-click the *TestConsole* icon on the desktop.

NOTE: TestConsole uses the Java* 2 Runtime Environment (JRE) v.1.4.2. The JRE is included in the TestConsole installation and operates independently from other versions of the JRE that might be on your system. It will not replace your default JRE.

1.5 TestConsole Window

Figure 1-1 TestConsole Project Window - Tiled View



The TestConsole main window displays the following panes:

- ◆ Project Contents
- ◆ Run Queue
- ◆ Project Log

These panes can be displayed as tiled or tabbed. You can change the display in the View menu.

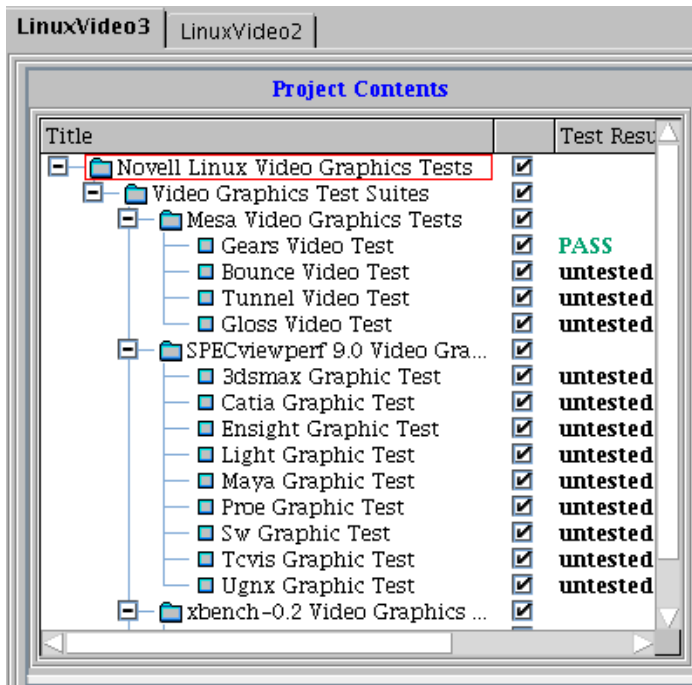
NOTE: Use the tabbed view if your monitor has a low resolution.

Each open test project is displayed on its own tab and can be quickly accessed by clicking on the tab with the test project name.

1.5.1 Project Contents

The Project Contents pane uses an expanding tree format to display the tests associated with the project you have chosen. For example, to expand or collapse a group of tests, click on the *plus* or *minus* icons next to the test.

Figure 1-2 Project Contents panel of the TestConsole window.



There are three columns in the *Project Contents* pane. The first column displays the title of the test. The second column indicates whether the test is selected to be run as part of a group. The third column indicates the final test result (untested, pass, fail, etc.).

The *Project Contents* pane may also display a *Station Address* icon (computer icon) to enable you to select your test station.

Running Tests

To run tests (or test groups) and view properties, right-click on any item in the *Project Contents* pane and choose an item from the popup menu. You may also double-click the test, test group, or suite that you want to run.

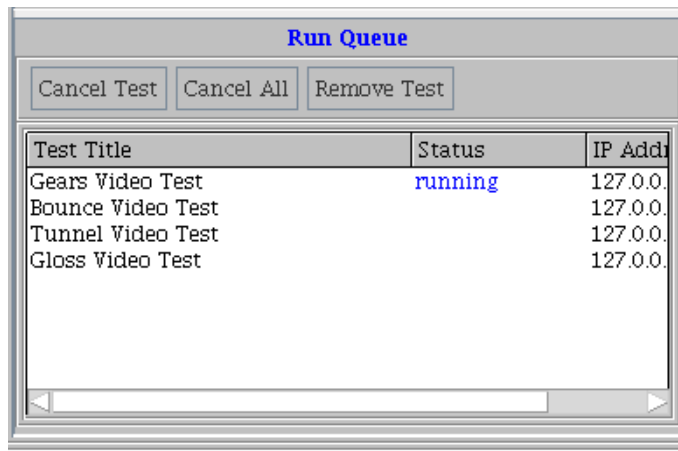
Selecting and Deselecting Tests

To select or deselect a test, click on the check marks in the second column. A test is selected if a check mark appears in the column. You can then run all tests in a group, suite, or project and it will skip the tests that have been deselected.

1.5.2 Run Queue

The Run Queue pane displays the tests that are currently running or queued to run. It displays the test name, its running status, and the IP address of the test station.

Figure 1-3 Run Queue panel of the TestConsole window.



The buttons at the top of Run Queue pane enable you to cancel or remove tests in the queue.

Cancel	Cancels individual tests that are queued to run.
Cancel All	Cancels all tests that are queued to run.
Remove Test	Allows you to remove a test, even if it is hung.

NOTE: When a test is running, the word “running” appears in the status column. If the station under test loses its connection the status column will indicate the broken connection.

1.5.3 Project Log

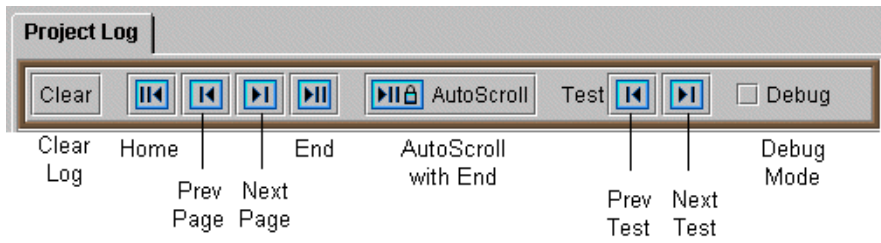
The *Project Log* pane displays a log of the tests in your test project. It records the time each test started and finished, the result of the test, etc.

NOTE: To display additional information about the test, errors, warnings, and failures in the *Project Log* pane, run the test in debug mode (see [Section 2.3, “Testing in Debug Mode,”](#) on page 19). Not all tests provide debug information.

Project Log Navigation

The following graphic displays the control buttons and their functions in the log toolbar.

Figure 1-4 Shows the Project Log toolbar.



Using TestConsole

2

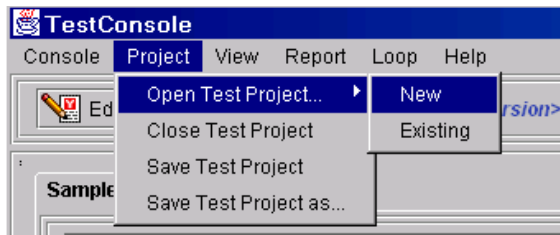
This section explains how to use TestConsole to run the Novell Yes, Tested and Approved certification tests. It covers the following topics:

- ♦ Section 2.1, “Managing Test Projects,” on page 17
- ♦ Section 2.2, “Selecting Test Stations,” on page 18
- ♦ Section 2.3, “Testing in Debug Mode,” on page 19
- ♦ Section 2.4, “Using Loop Mode,” on page 20
- ♦ Section 2.7, “Reporting Test Results,” on page 24

2.1 Managing Test Projects

The tests that you run, along with their results and other information about your product, are called Test Projects. You can open, save, and close test projects.

Figure 2-1 Options on the Project menu.



2.1.1 Opening a New Test Project

- 1 Open TestConsole by double-clicking the *TestConsole* icon on the desktop.
- 2 From the main menu, click *Project > Open Test Project > New*, or click *New* on the toolbar.

The Select Project window appears. This window displays any installed DeveloperNet compatibility test kits.

- 3 Select the type of test you want to load.
- 4 Click *Select*.

2.1.2 Opening an Existing Test Project

- 1 From the main menu, click *Project > Open Test Project > Existing*, or click *Open* on the toolbar.

The Select Project window appears. This window displays any previously saved test projects.

- 2 Select the project you want to run.
- 3 Click *Select*.

2.1.3 Saving a Test Project

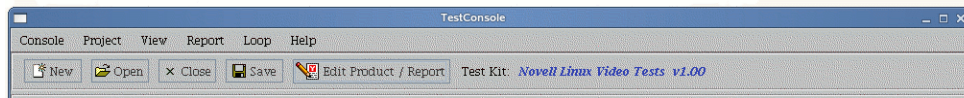
- 1 To save a test project, from the main menu, click *Project > Save Test Project*, or click *Save* on the toolbar.

Or

- 1 To save a test project with a different name, click *Project > Save Test Project As*.

2.1.4 Closing a Test Project

- 1 To close a test project, from the main menu, click *Project > Close Test Project* or press the *Close* button on the toolbar.

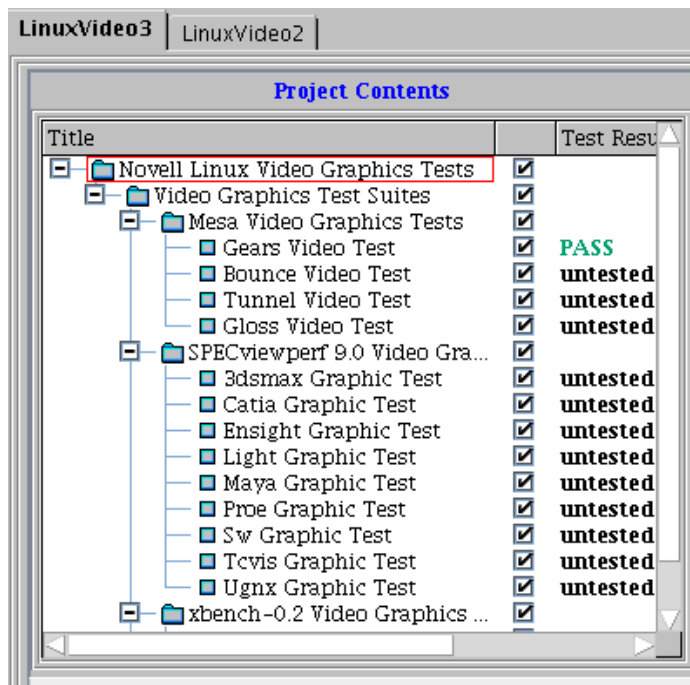


Test project *New*, *Open*, *Close*, and *Save* buttons as found on the tool bar on the toolbar.

2.2 Selecting Test Stations

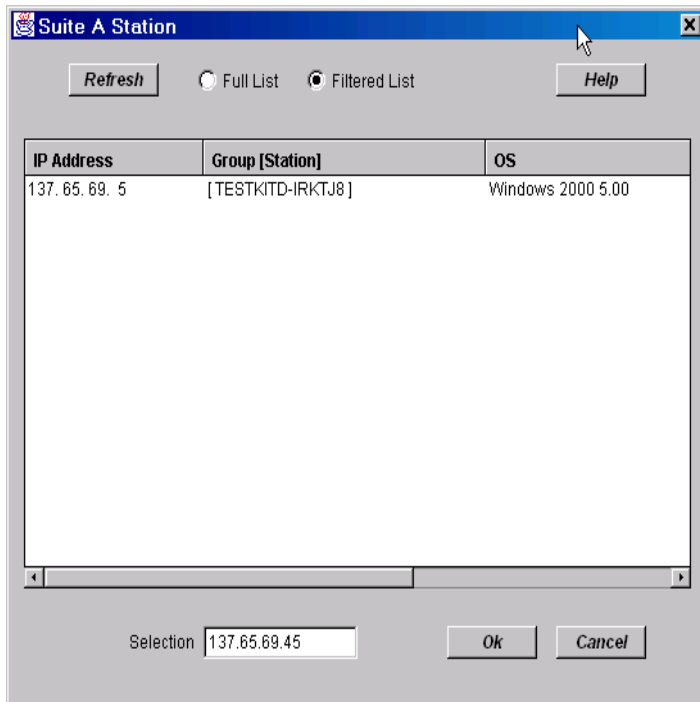
Before you begin testing, some tests may require that you designate the station where the tests are performed. Test stations are identified by their IP addresses.

Figure 2-2 *Project Contents panel.*



When you open a test project, a Station Address icon appears in the *Project Contents* pane. When you double-click on the *Station Address* icon, the Station dialog window appears.

Figure 2-3 Shows the Station Dialog.



TestConsole attempts to detect the IP addresses of any stations on the subnetwork that have loaded TCLink. You can select the test station from the list provided. If the IP address is not visible (for example, on a different subnet), you can type it in the Selection box.

TIP: If the loopback IP address 127.0.0.1 appears in the *Select Test Station* window, it is an indication that the IP address on the TestConsole client is not set up properly.

2.3 Testing in Debug Mode

Debug Mode displays additional information about errors and failures encountered while running the test. This information is displayed in the *Project Log* pane of the *TestConsole* window.

NOTE: Not all test modules support the logging of debug information.

To enable debug mode, click the *Debug* check box in the *Project Log* control bar.

NOTE: Debug mode runs slower than the normal test mode and can quickly fill up the event log. By default, the log is limited to 20,000 entries. When it exceeds 20,000, the entries at the beginning of the log are lost (because they are overwritten). You can change the log's maximum entries number in *Console > Preferences* (see [Section 2.5, "Setting Preferences,"](#) on page 21).

2.4 Using Loop Mode

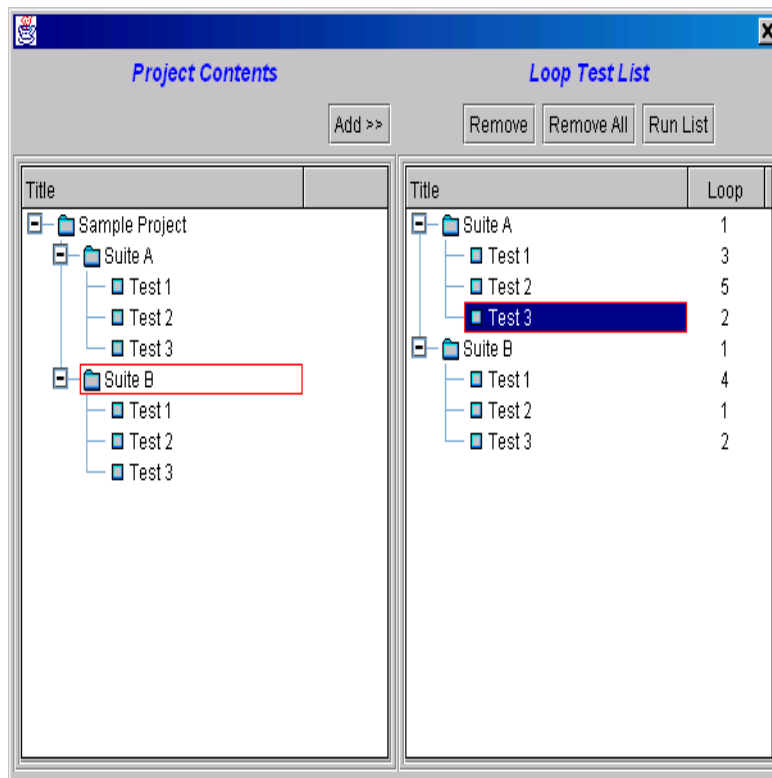
Loop mode allows you to set up a list of tests or test groups in any order and to run the tests multiple times in a loop. You can specify loop counts for individual tests as well as groups of tests.

2.4.1 Editing the Loop Test List

- 1 To create or edit the Loop Test List, from the menu bar select *Loop > Edit Loop List*. This displays a dialog box with two panes. The left pane displays the available *Project Contents*. The right pane displays the *Loop Test List*.
- 2 In the *Project Contents* pane, highlight the test or group that you want to add to the *Loop Test List* and click *Add*. The selected items are added to the loop list. You can continue to add items in any order.
- 3 To delete a test or group, highlight the item in the *Loop Test List* pane and click *Remove*.
- 4 To rearrange the order of the tests within a group, right-click the item in the *Loop Test List* pane and select *Move Up* or *Move Down* from the popup menu.
- 5 To edit the loop count for individual tests or test groups, right-click the test title and select *Loop Count*. This displays a dialog that allows you to edit the loop count properties.

The Loop Test List is saved until the project is closed. You can close the Loop dialog at any time.

Figure 2-4 Shows the Loop dialog.



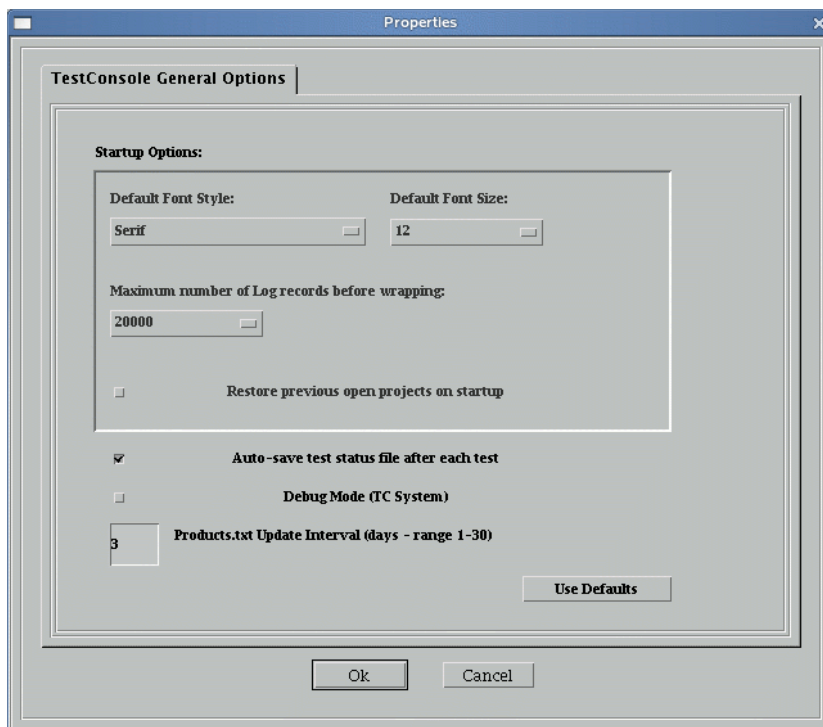
2.4.2 Running the Loop Test List

- 1 If the *Loop List* dialog is open, click *Run List*.
- 2 If the *Loop List* dialog is closed, from the menu bar click *Loop > Run Loop List*.

NOTE: Currently, loop mode restricts the number of test instances that can be placed on the Run Queue to 100 maximum. For example, if you have 2 tests in a group that run 25 times each with the group itself running 2 times, then you have reached your maximum.

2.5 Setting Preferences

Figure 2-5 Properties Window



TestConsole has several options that can be set. To get to the tab with these settable options select *Preferences* from the *Console* menu on the main console screen. This will bring up the *TestConsole General Options* tab. The settable preferences on this screen are:

Startup Options

Default Font (Serif): Currently available styles are Serif, Sans Serif, Dialog, Dialog Input, and Mono Spaced. Select one and the next time TestConsole is started that font will be used.

Default Font Size (12): The following sizes are available for selecting: 6, 8, 9, 10, 11, 12, 14, 16, 18, 20. Select one and the next time TestConsole is started that font will be used.

Maximum number of log records before wrapping (20,000): This preference allows you to select the number of records that will be entered into the log before the records are overwritten. The

choices are 5,000, 10,000, 15,000, 20,000, and 50,000. Select one and the next time TestConsole is started this number will be used.

Restore previous open projects on startup (unchecked): This is a simple check box. When checked it will restore any previously opened projects when TestConsole is started up.

Other Options

Auto-save test status file after each test (checked): This check box will allow you to turn on the feature that will automatically save the test status file after each test is completed. When this is unchecked automatic saving of this file is turned off.

Debug Mode (TC System) (unchecked): This mode, when checked, will dump debug messages to the terminal relative to TestConsole program execution. These messages are printed out using the `System.err.println` method.

Products.txt Update Interval (days – range 1-30) (3): This text box allows you to specify the number of days between automatic updates of the products.txt file. The range of days that can be entered are 1 through 30. See the Updating Products.txt section below for more details on this feature.

The *Use Defaults* button found at the bottom of the tab will reset all of the items on the *TestConsole General Options* tab page to their default settings. Those defaults are shown above.

2.6 Updating the Products.txt File

TestConsole requires the products.txt file to accurately update company and product information. This file is used by most of the test kits. It is updated automatically by the TestConsole. The default update period is every 3 days.

The settable update periods range from 1 to 30 days. To change the update period:

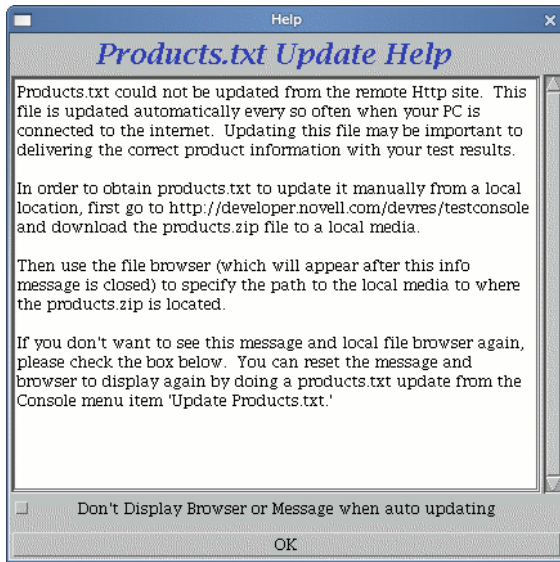
- 1 Select *Console > Preferences* from the TestConsole main menu. The *General Options* tab appears.
- 2 Enter the preferred interval period in the *Products.txt Update Interval* field.
- 3 Click *OK*.

When the update takes place a series of status messages are displayed in the terminal box to indicate whether the update was successful or not.

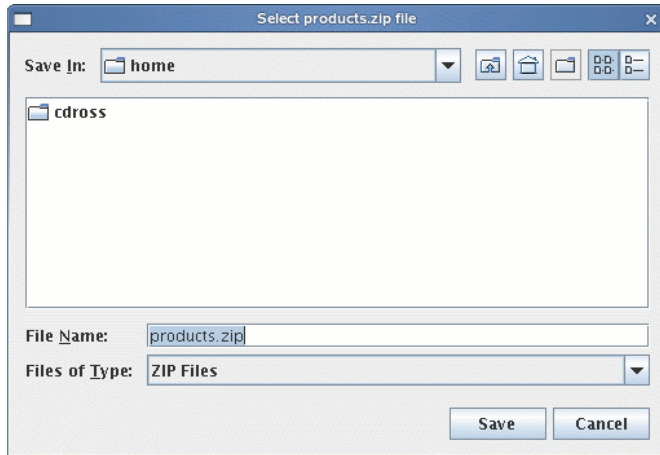
If the PC running TestConsole is not connected to the Internet when an attempt to do an automatic update occurs, TestConsole will time out and a help window explains what is necessary to allow you to update the Products.txt file manually.

To update the Products.txt file manually via a local directory on the machine's local hard drive, floppy drive, or a flash drive.

- 1 Click *Ok* on the *Products.txt Update Help* dialog.



- 2 The *Select Products.zip file* directory box appears.



- 3 Browse to the products.zip file that you downloaded to an alternate media for updating through this manual process.
- 4 Click *Save*.

This manual method of updating the products.txt file is optional and you would need to download the file `products.zip` to one of the above listed other media first.

You can manually update the `products.txt` file at anytime by selecting *Console > Update Products.txt*. It will first attempt to download the `products.zip` file from the Novell URL, then if this fails it will display the window to update it from another local source. If the manual update succeeds the current version number will be displayed in a message on the terminal screen. Error messages in the process are also displayed on the terminal screen.

The current version can also be found in blue characters at the bottom of the *About TestConsole* window. You can get to this by clicking *Help > About TestConsole* .

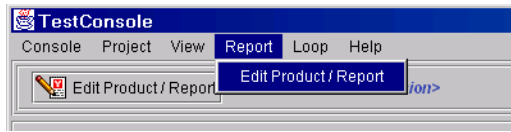
2.7 Reporting Test Results

All certification test kits use a common report window to record information about the product being tested. The Product & Report Information window enables you to do the following:

- ◆ Edit or view product and report information.
- ◆ Import information in the product library files.
- ◆ Print a sample test report (sample bulletin).
- ◆ Verify report data and test results.
- ◆ Create a Novell report for certification.
- ◆ Explain exceptions and testing errors.
- ◆ Clear all report data and test results.

To access the Product & Report Information window, click *Report > Edit Product/Report* from the main menu, or click *Edit Product/Report* on the toolbar.

Figure 2-6 *Selecting Edit Product/Report from the Report menu.*

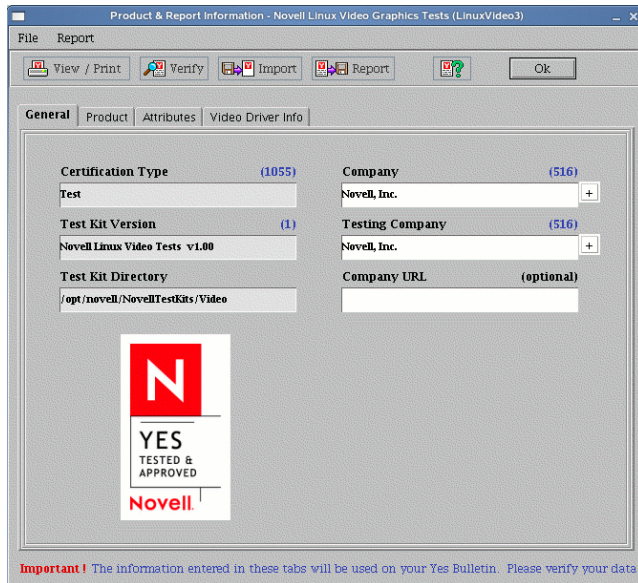


2.7.1 Entering Product Information

You enter information about your company and the product you are testing in the tabs of the Product & Report Information window. The tabs that appear in the window are different for each Novell certification test kit since each kit requires different kinds of information.

The data that you enter in the tabs of the Product & Report Information window is displayed on your product's bulletin. Therefore, it is important that the information be clear, concise, accurate, and suitable for publication.

Figure 2-7 Shows the Report window.



2.7.2 Exporting Product Information

If you have a lot of test certification projects and get tired of repeatedly typing in the duplicate Company, Product, and Attribute information for each of those projects, you can create an importable file that would fill all this information in for you. You then could go back and edit any of that imported information that is different from project to project.

This import file can be created simply by saving a special .tsf file. Enter all of the product information in all of the tabs in the Product Information window. Then do a “Project SaveAs” and give the .tsf file a special name. Then place it in the directory that you would like the file to be kept (it doesn't have to be the status directory). Be sure to either close or rename the current project that you used to create this file before you continue to do your testing. See the Importing Product Information section below on how to do the actual import of your saved information.

2.7.3 Importing Product Information

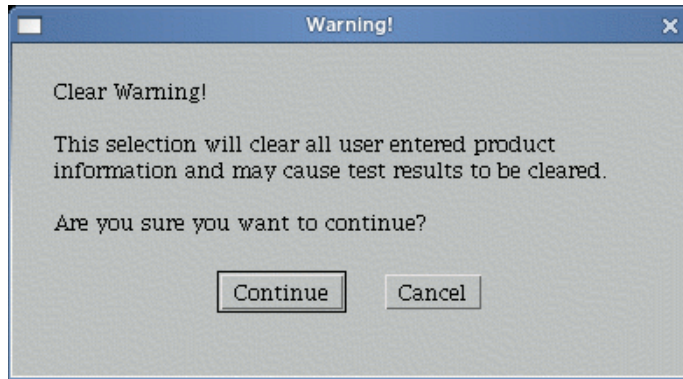
You can retrieve product information. This feature streamlines data entry, enabling you to use information you have previously entered to test another product. You will, however, need to make adjustments to the data for your new product.

We recommend that you only use this feature when creating a new test project, before you have entered any data in the Product & Report Information window or run any tests, because importing product information automatically overwrites any existing data and may clear existing test results.

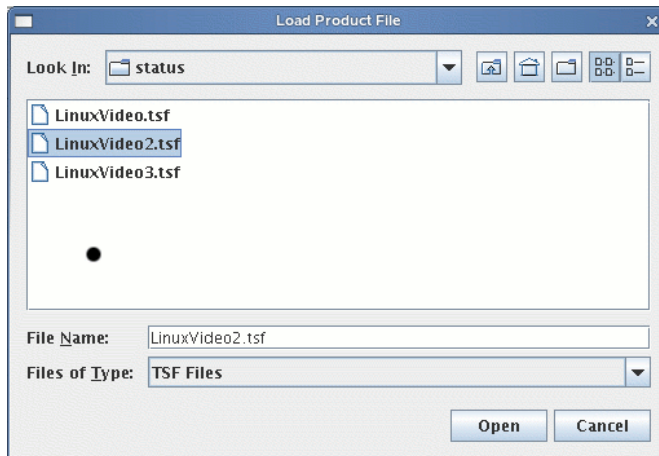
To import product information, do the following:

- 1 Click *File > Import Product File* from the Main menu in the *Edit Product/Report* tab.

When you import product information, TestConsole displays a dialog to notify you that current data and test results may be cleared.



- 2 Click *Continue* if you want to continue.
- 3 Select the product file (listed with a .tsf extension) and click *Open*.



The product file data populates the tabs in the *Product & Report Information* window.

- 4 Make the necessary modifications to the data for the new product you are testing.

2.7.4 Verifying Report Data

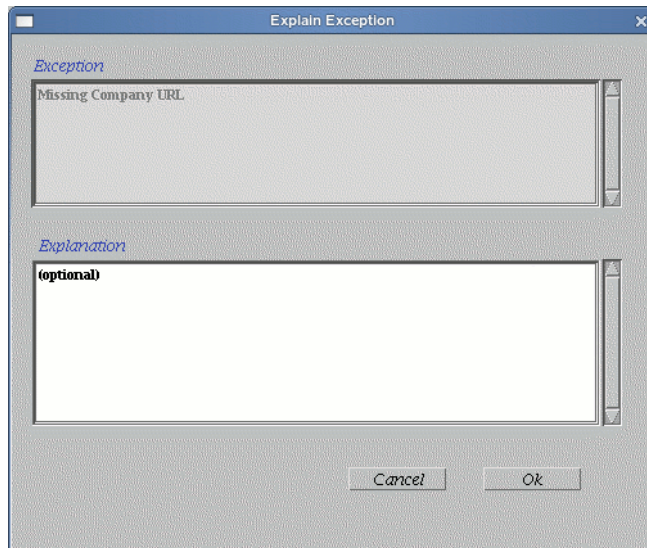
The Verify feature ensures that all report information has been entered and that all tests have a valid result. It enables you to validate your test project before generating a report.

these instances before you can generate a test report. A Novell Developer Support engineer evaluates each exception and its accompanying explanation and determines if a certification bulletin can be issued.

Select one or more errors to explain, then click the Edit Explanation button. This brings up the Explain Exception window for you to explain the selected errors.

TIP: If one explanation can be used for multiple exceptions, select the exceptions (hold down the <Shift> or <Control> keys while selecting), enter your explanation, then click the *OK* button.

Figure 2-9 Shows the Exception Information window.



When all of your exceptions or failures have been corrected or explained, you can generate your test report.

2.7.5 Generating a Novell Report

After you have completed your testing and entered all required information in the Product & Report Information window, you can generate your test report.

A test report consists of your test results, information about the product and company, and all other files necessary for certification.

To generate a report, do the following:

- 1 Click *Report > Generate Report* from the main menu, or click *Report* on the toolbar.
- 2 Enter a filename for the results file.
- 3 Click *Save*.

TestConsole creates a .zip file of all necessary files and save them in the `Results` directory of the test kit you are using (for example, `c:\novelltestkits\storage\results`)

2.7.6 Viewing or Printing a Summary

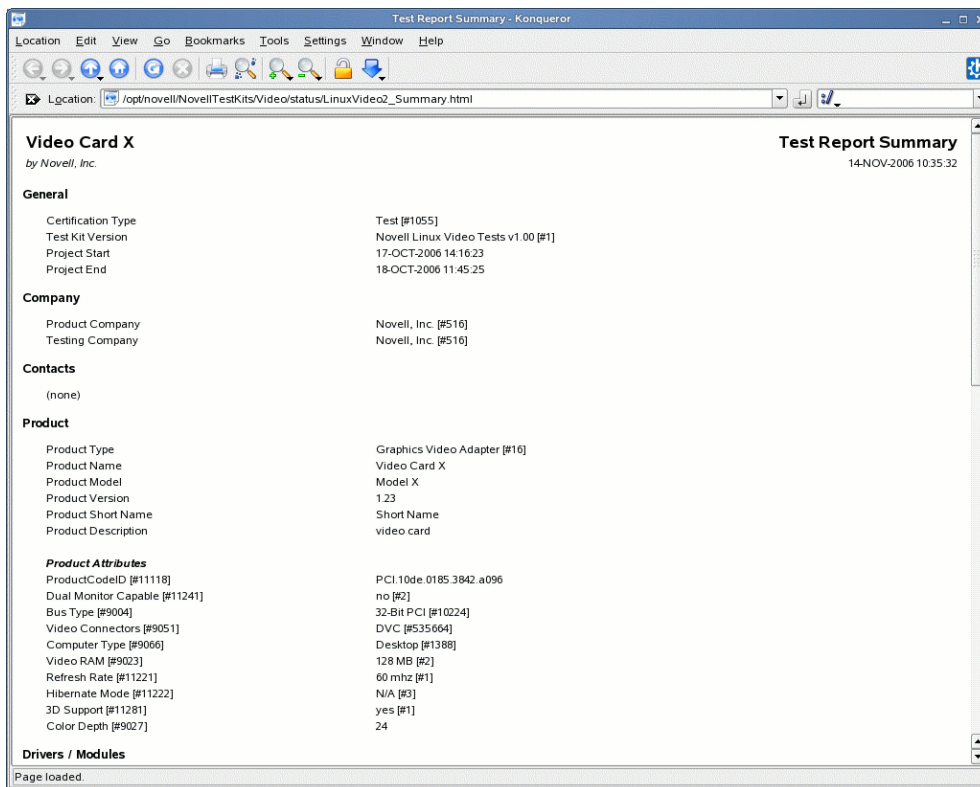
You can view or print a summary of your YES submission. We recommend that you print the summary and review it thoroughly to ensure that the information is correct and suitable for publication in the bulletin. If you need to make changes, you can do so, and then regenerate the report file.

NOTE: Requires a browser on the TestConsole station.

To print your summary report,

Click *File > View/Print Summary* from the Product & Report Information window, or click *View/Print* on the toolbar.

Figure 2-10 Shows the Summary Report.



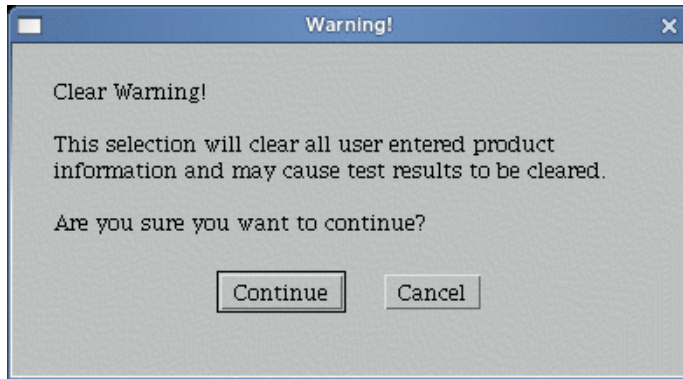
2.7.7 Clearing a Report

The Clear Report action is used to clear all report information and test results in the project. You should only perform this action if you want to clear all the user-entered information in the Report window.

To clear a report, do the following:

- 1 Click *Report > Clear Report* from the *Product & Report Information* window.

The following warning window is displayed to verify this is what you intended to do.



2 Click *Continue*.

Revision History



Date	Revisions
November 29, 2006	Updated graphics. Added Products.txt and Exporting sections.
March 1, 2006	Updated format.
October 5, 2005	Updated document style and format.
March 2, 2005	Updated front matter.
October 2004	Updated Section 1.2, "Installing TestConsole," on page 11 and Section 1.4, "Running TestConsole," on page 12.
June 2004	TestConsole for Linux initial release.
