

Wireless Email Installation Checklist for Novell GroupWise Environments

Overview

This chapter includes a checklist to be completed before you install Wireless Email for Novell GroupWise. By completing this checklist before you install the software, you will have important information for the installation at your fingertips. In addition, you are verifying prerequisites to help ensure the Environment Analyzer won't spot any problems during installation.

Wireless Email preinstallation checklist

Before installing the Intellisync software, use this checklist to complete the following tasks:

- Verify setup and configuration of the Wireless Email server
- Set up and verify communications

Nokia recommends that you print this checklist and complete it before to installing Wireless Email.

Verifying the Wireless Email server

A: Identify the Wireless Email server computer.

The Wireless Email server and the Novell GroupWise server should be located on different computers.

| |
|---|
| Wireless Email Server Name: _____ Example: <computername> sync |
| Wireless Email Server IP Address: _____ Example: 192.68.1.1 |
| Wireless Email Server URL: _____ Example: sync.acme.com |

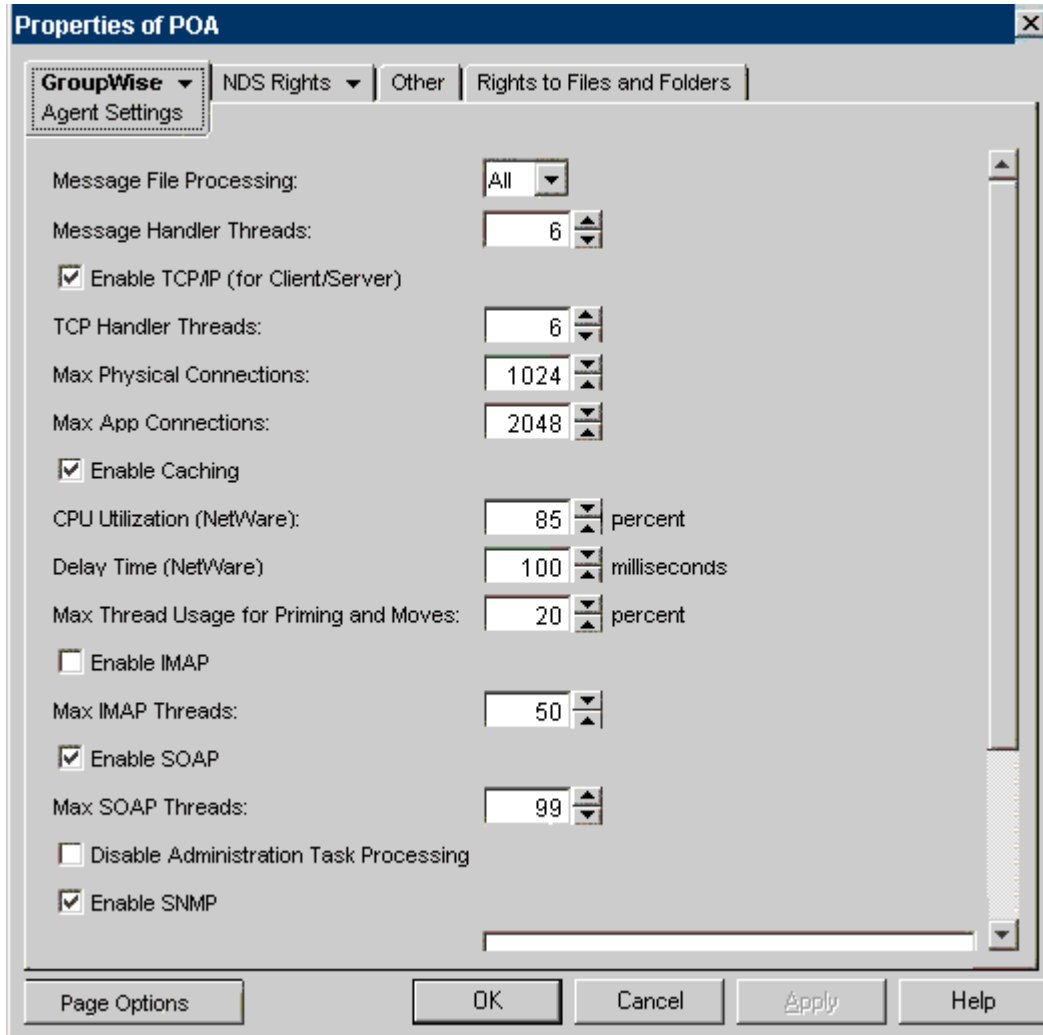
B: Identify the Intellisync Service User.

The Intellisync service account is used to run services required by Intellisync products.

| |
|--|
| Account Name: _____ |
| <input type="checkbox"/> Local Admin |
| Account requires the following permissions: |
| <input type="checkbox"/> Log on locally |
| <input type="checkbox"/> Act as operating system |
| <input type="checkbox"/> Log on as service |
| <input type="checkbox"/> Log on as batch job |
| These permissions are set as part of the installation process. |

C: Enable SOAP on the GroupWise server

In Console1, go to the Properties for the Post Office Agent (POA). From the **GroupWise** tab, select **Agent Settings**, and then select **Enable SOAP**. Refer to the example below:



D: Identify the GroupWise environment.

GroupWise Server Name: _____

GroupWise Server Version:
 GroupWise Server 7.0 SP 1

GroupWise Port: _____

Access Method: ___ Trusted Application Access ___ User Level Access

If Trusted Application Access, complete the following:
 Created a Trusted Application named "IntellisyncMobileSuite".

Trusted Application Key: _____

E: Identify the test accounts.

List the first five accounts you want to use to test Wireless Email. Make sure each test account has a mailbox and is assigned to a GroupWise server.

| Test User Name | Mailbox | GroupWise Server |
|----------------|---------|------------------|
| | | |
| | | |
| | | |
| | | |
| | | |

F: Check the operating system for the server computer.

1. From the Windows **Start** menu, select **Settings**, and then **Control Panel**.
2. Double-click the **System** icon to open System Properties. (The General tab is selected by default.)
3. Check the operating system.

| |
|--|
| <input type="checkbox"/> The operating system is Windows 2000 Server with Service Pack 4. (Note that Service Pack 3 is required prior to installing Service Pack 4.) |
| <input type="checkbox"/> All hot fixes from Microsoft have been installed. |

Setting up and verifying communications

A: Identify the Domain environment.

| |
|-------------------------------------|
| Wireless Email Server Domain: _____ |
|-------------------------------------|

B: If you are using the Personalized Info feature of Wireless Email, make sure you can communicate with the content servers without requiring proxy authentication.

1. From the Wireless Email server, browse to <https://www.syncsupport.com/test.asp>.

| |
|---|
| <input type="checkbox"/> The license server was successfully reached. |
|---|

2. Check for any proxy server restrictions. Document restrictions below.

| |
|---|
| Proxy Server Restrictions: Example: "Proxy is on port x. It requires a user name and password." Authenticated? _____ Port? _____ Other: _____ _____ _____ _____ |
|---|

C: (Optional) Verify that SMTP is installed and running (Required for Alerts/ Push)

Ideally, you should point Wireless Email to your existing SMTP server (using the General tab of Admin Console Properties).

| |
|------------------------------|
| SMTP server _____ Port _____ |
|------------------------------|

If this approach is not feasible for your installation, use the following instructions.

1. From the Windows **Start** menu, select **Settings**, and then **Control Panel**.
2. Double-click **Administrative Tools**.
3. Double-click **Internet Services Manager**.
4. Expand the server control, and verify that "Default SMTP Virtual Server" is available and running.

| |
|---|
| <input type="checkbox"/> The SMTP service is installed. |
|---|

D: (Optional) Lock down SMTP by setting up proper Relay Restrictions and Connection Control settings.

This step is not necessary if you are using your mail server (or other server) as an SMTP server.

1. Within the Internet Services Manager, right-click **SMTP Virtual Server**.
2. Select **Properties**.
3. Select the **Access Tab**.
 - **Configure Relay Restrictions.**
Microsoft SMTP Service blocks computers from relaying unwanted mail through the virtual server. By default, all computers are blocked from relay access except those that have met authentication requirements. You can enable relay access to the virtual server for specific computers, for a group of addresses using a subnet mask, or for a domain.

- **Configure Connection Control.**

By default, the SMTP virtual server is accessible from all IP addresses. However, you can grant or deny access to specific IP addresses, while allowing or denying access for a larger group. You can do this by specifying a single IP address, a group of addresses using a subnet mask, or a domain name.

E: Verify that Internet Explorer 5.0 (or later) is installed.

Microsoft Internet Explorer 5.0 (or later) is installed.