

Distribution Lists, Groups, and Organizational Roles

VI

- ♦ Chapter 17, “Understanding Distribution Lists, Groups, and Organizational Roles,” on page 277
- ♦ Chapter 18, “Creating and Managing Distribution Lists,” on page 279
- ♦ Chapter 19, “Using eDirectory Groups as GroupWise Distribution Lists,” on page 293
- ♦ Chapter 20, “Using eDirectory Organizational Roles as GroupWise Distribution Lists,” on page 299

Understanding Distribution Lists, Groups, and Organizational Roles

17

Distribution lists are specific to GroupWise. Groups and organizational roles are eDirectory™ objects that can be configured to work with GroupWise.

Distribution lists, groups, and organizational roles are all sets of users and (optionally) resources that can be addressed as a single entity. When a GroupWise user addresses an item (message, appointment, task, or note) to a distribution list, group, or organizational role, each user or resource that is a member receives the item if he or she has a GroupWise account.

The following sections provide information to help you learn about distribution lists, groups, and organizational roles:

- ♦ [Section 17.1, “Public vs. Personal Address Lists,” on page 277](#)
- ♦ [Section 17.2, “Distribution Lists,” on page 277](#)
- ♦ [Section 17.3, “eDirectory Groups and Organizational Roles,” on page 278](#)

17.1 Public vs. Personal Address Lists

Distribution lists and groups are public address lists, meaning that they are administrator-defined lists available to all users in your GroupWise system.

If users want to create personal address lists, they can create personal groups in the GroupWise client. When a user creates personal groups, the groups are saved in his or her mailbox and are available for use only by that user. They cannot be shared by, or transferred to, other users.

If a user wants to send to all users in a particular post office or domain, he or she can use wildcard addressing, if it has been enabled. See [Section 6.7, “Enabling Wildcard Addressing,” on page 100](#).

17.2 Distribution Lists

A distribution list is specific to GroupWise. It is a public address list that you, as the GroupWise administrator, can create to facilitate easier addressing within your GroupWise system. Distribution lists can only contain users that have GroupWise accounts.

Each distribution list you want to create must be added as a Distribution List object in eDirectory. The name that you give the Distribution List object becomes the name by which the distribution list is displayed in the GroupWise Address Book.

Distribution List objects can be located in any eDirectory container that is in the same tree as the distribution list’s domain.

Because a distribution list is an addressable entity, you must assign it to a post office when you create it. This ensures that the distribution list has a standard GroupWise address (*distribution_list_name.post_office.domain*).

Regardless of the distribution list’s post office, all GroupWise users can use the distribution list when addressing a message.

You can determine which users see the distribution list in the Address Book. System visibility enables all users in your GroupWise system to see the distribution list. Domain visibility enables all users in the distribution list's domain to see the distribution list. Post Office visibility enables all users in the distribution list's post office to see the distribution list. Setting the visibility level to *None* means that no users see the distribution list in the Address Book.

Users who cannot see the distribution list in the Address Book can still use the distribution list by typing the distribution list name in the To field of the message.

A distribution list can contain users and resources as well as other distribution lists, groups, and organizational roles. Members do not need to be on the same post office as the distribution list's post office.

For details about distribution lists, see [Chapter 18, "Creating and Managing Distribution Lists," on page 279](#).

17.3 eDirectory Groups and Organizational Roles

eDirectory groups and organizational roles are general eDirectory objects that can be created to facilitate easier administration of eDirectory users who have common needs or who share a common role or responsibility.

If you have eDirectory groups or organizational roles that you want GroupWise users to be able to address messages to, you need to make them available in your GroupWise system. When doing so, you can choose the groups and roles that you want available, and choose which users they are available to.

If a group or role contains both eDirectory users with GroupWise accounts and eDirectory users without GroupWise accounts, only those users with GroupWise accounts receive messages addressed to the group or role.

As mentioned previously, Group and Organizational Role objects are not specific to GroupWise. For information about creating these objects, see your eDirectory documentation.

The name given to the Group object or Organizational Role object becomes the name by which it is displayed in the GroupWise Address Book when you make it available. You make a group or role available in your GroupWise system by assigning it to a post office. This ensures that the group or role has a standard GroupWise address (*name.post_office.domain*). Regardless of the post office where the group or role is assigned, all GroupWise users can use it when addressing a message.

You can determine which users see the group or role in the Address Book. System visibility enables all users in your GroupWise system to see the group or role. Domain visibility enables all users in the distribution list's domain to see the group or role. Post Office visibility enables all users in the distribution list's post office to see the group or role. Setting the visibility level to *None* means that no users can see the group or role in the Address Book.

Users who cannot see the group or role in the Address Book can still use it by typing the name in the To field of the message.

For details about eDirectory groups and organizational roles, see [Chapter 19, "Using eDirectory Groups as GroupWise Distribution Lists," on page 293](#) and [Chapter 20, "Using eDirectory Organizational Roles as GroupWise Distribution Lists," on page 299](#).

Creating and Managing Distribution Lists

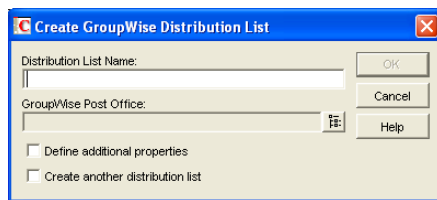
18

A GroupWise® distribution list can contain GroupWise users, resources, and other distribution lists. When creating the distribution list, you can determine each entry's participation in the list (primary recipient, carbon copy recipient, or blind copy recipient).

- ♦ [Section 18.1, “Creating a New Distribution List,” on page 279](#)
- ♦ [Section 18.2, “Adding Members to a Distribution List,” on page 282](#)
- ♦ [Section 18.3, “Removing Members from a Distribution List,” on page 283](#)
- ♦ [Section 18.4, “Moving a Distribution List,” on page 283](#)
- ♦ [Section 18.5, “Renaming a Distribution List,” on page 284](#)
- ♦ [Section 18.6, “Enabling Users to Modify a Distribution List,” on page 284](#)
- ♦ [Section 18.7, “Deleting a Distribution List,” on page 286](#)
- ♦ [Section 18.8, “Managing E-Mail Addresses,” on page 286](#)
- ♦ [Section 18.9, “Adding External Users to a Distribution List,” on page 290](#)

18.1 Creating a New Distribution List

- 1 In ConsoleOne®, right-click the eDirectory container where you want to create the Distribution List object, then click *New > Distribution List*.



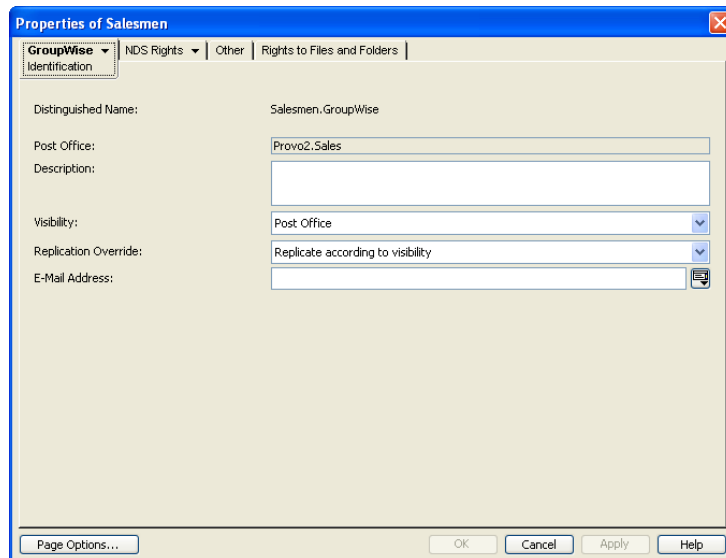
- 2 Fill in the following fields:

Distribution List Name: Specify a descriptive name. Because the name is used as part of the distribution list's GroupWise address, do not use any of the following invalid characters in the distribution list name:

ASCII characters 0-31	Comma ,
Asterisk *	Double quote "
At sign @	Extended ASCII characters that are graphical or typographical symbols; accented characters in the extended range can be used
Backslash \	Parentheses ()
Braces { }	Period .
Colon :	

GroupWise Post Office: Select the post office the distribution list will be assigned to. The distribution list can contain members of other post offices.

- 3 Select *Define Additional Properties*, then click *OK*.



- 4 On the Identification page, fill in the following fields:

Description: Specify a description to help you identify the purpose or members of the distribution list.

Visibility: Select the level at which the distribution list will be visible in the Address Book. *System* enables the distribution list to be visible to all users in your GroupWise system. *Domain* enables the distribution list to be visible to all users in the same domain as the distribution list. *Post Office* enables the distribution list to be visible to all users on the same post office as the distribution list. Setting the visibility level to *None* means that no users can see the distribution list in the Address Book.

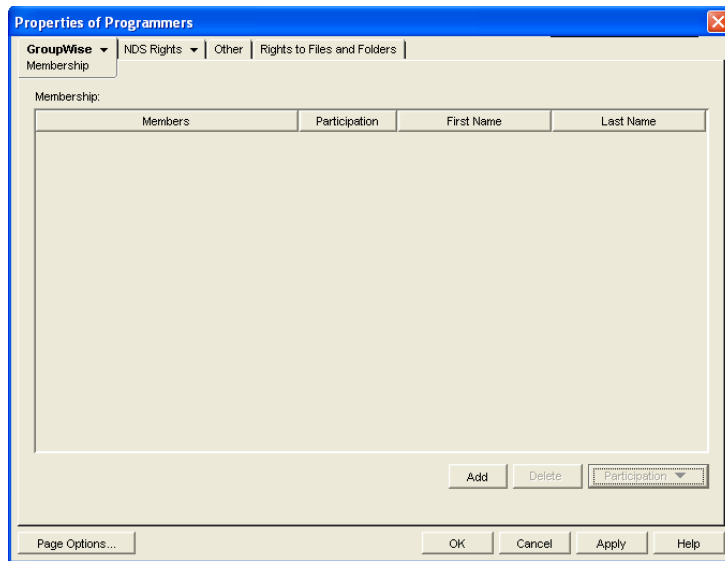
Replication Override: By default, distribution lists are replicated throughout your GroupWise system based on the selected visibility level. With the default visibility level, distribution lists are visible in the GroupWise Address Book for local post office users only and are not replicated to other post offices.

If you set Visibility to *Domain*, the distribution list is replicated to all post offices in the domain, but not to post offices belonging to other domains. If you set Visibility to *System*, the distribution list is replicated to all post offices in your GroupWise system. This default behavior corresponds to the *Replicate According to Visibility* setting.

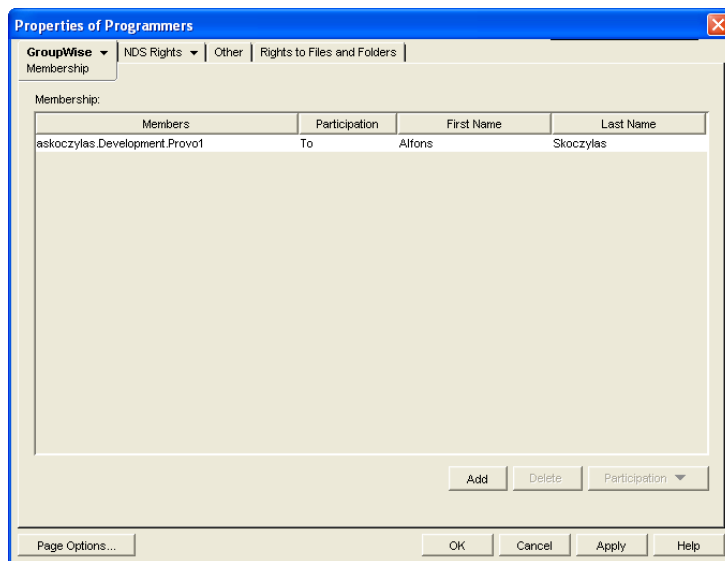
Select *Replicate Everywhere Regardless of Visibility* if you want the distribution list replicated throughout your GroupWise system regardless of the selected visibility level. With this setting, the distribution list is made available in all post offices, although it is still only visible in the GroupWise Address Book according to the selected visibility level. The availability of the distribution list in all post offices means that it can be nested into other distribution lists that are visible in any post office, and that users in any post office can manually specify the distribution list name in the To field of an item.

E-Mail Address: Displays the default e-mail address for the distribution list. Click the drop-down list to specify a custom e-mail address. For example, if you created a distribution list with spaces in its name, you need to remove the spaces to create a valid e-mail address.

5 Click *GroupWise > Membership* to display the Membership page.



6 Click *Add*, select the user, resource, distribution list, eDirectory group, or organizational role you want to add as a member, then click *OK* to add the member to the list.



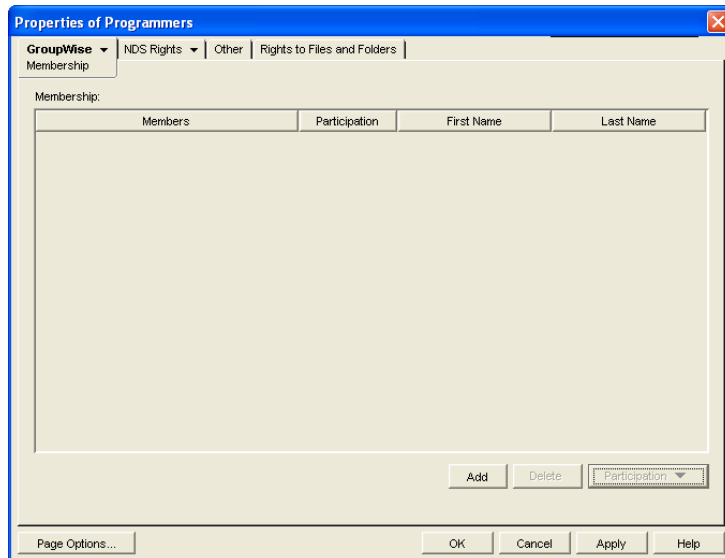
By default, the member is added as a primary recipient (To: recipient).

- 7 If you want to change the member's recipient type, select the member, click *Participation*, then click *To*, *CC*, or *BC*.
- 8 Repeat **Step 6** and **Step 7** to add additional members.
- 9 Click *OK* to save your changes.

18.2 Adding Members to a Distribution List

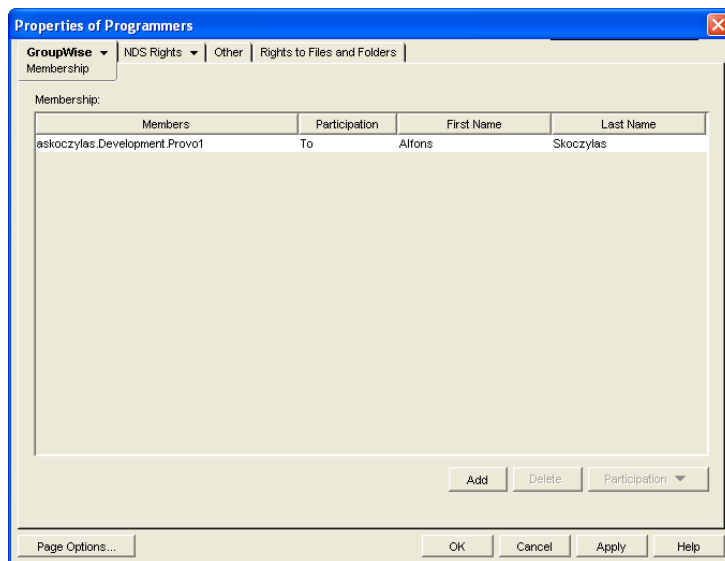
Distribution lists can contain users, resources, groups, organizational roles, and other distribution lists.

- 1 In ConsoleOne[®], right-click the Distribution List object, then click *Properties*.
- 2 Click *GroupWise > Membership* to display the Membership page.



- 3 Click *Add*, select the user, resource, distribution list, group, or organizational role you want to add as a member, then click *OK* to add the member to the list.

If you want to add an external user that is not listed for selection, see [Section 18.9, “Adding External Users to a Distribution List,”](#) on page 290.



By default, the selected member is added as a primary recipient (To: recipient).

- 4 If you want to change the member's recipient type, select the member, click *Participation*, then click *To*, *CC*, or *BC*.
- 5 Repeat [Step 3](#) and [Step 4](#) to add additional members.
- 6 Click *OK* to save your changes.

Distribution lists are typically managed by an administrator in ConsoleOne. Starting in GroupWise 7, users can be granted rights to modify distribution lists, as described in [Section 18.6, "Enabling Users to Modify a Distribution List,"](#) on page 284.

In addition, GroupWise client users can create shared address books and then create groups within those shared address books so that the groups are available to all users with whom the address book is been shared. The creator of the shared address book can give other users read only rights, or can choose to grant them additional rights for adding, editing, and deleting information. For more information about shared address books, see "[Sharing an Address Book with Another User](#)" in "[Contacts and Address Books](#)" in the *GroupWise 8 Windows Client User Guide*.

18.3 Removing Members from a Distribution List

When you remove users' or resources' GroupWise accounts, delete groups, delete organizational roles, or delete distribution lists, they are automatically removed from any distribution lists in which they have membership.

To manually remove members from a distribution list:

- 1 In ConsoleOne, right-click the Distribution List object, then click *Properties*.
- 2 Click *GroupWise > Membership* to display the Membership page.
- 3 Select the member you want to remove from the list, then click *Delete*.

18.4 Moving a Distribution List

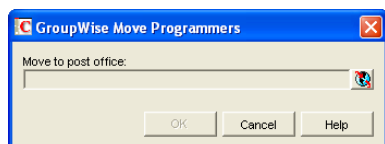
If necessary, you can move a distribution list from one post office to another. For example, you might need to move a distribution list from a post office you are removing.

The distribution list retains the same name on the new post office as it has on the current post office. If another user, resource, or distribution list assigned to the new post office has the same name, you must rename one of them before you move the distribution list. For details, see [Section 18.5, "Renaming a Distribution List,"](#) on page 284.

To move a distribution list:

- 1 In ConsoleOne, right-click the Distribution List object in the GroupWise View, then click *Move* to display the GroupWise Move dialog box.

IMPORTANT: You must select the Distribution List object in the GroupWise View. If you select the object in the standard Console View, you will move the Distribution List object from one container to another, not the distribution list from one post office to another.



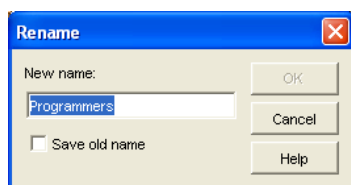
- 2 Select the post office to which you want to move the distribution list, then click *OK* to move the distribution list.

18.5 Renaming a Distribution List

Situations might arise where you need to give a distribution list a new name. For example, you might need to move the distribution list to another post office that already has a user, resource, or distribution list with the same name.

To rename a distribution list:

- 1 In ConsoleOne, right-click the Distribution List object in the GroupWise View, then click *Rename* to display the Rename dialog box.



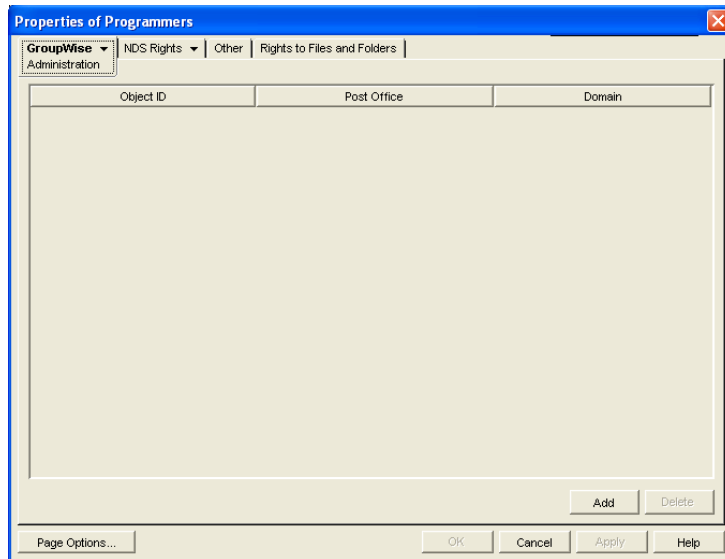
- 2 In the *New Name* field, specify the new name for the distribution list.
- 3 Make sure the *Save Old Name* box is not selected. Saving the old name causes duplicate distribution lists to appear in the Address Book.
- 4 Click *OK* to rename the distribution list.

18.6 Enabling Users to Modify a Distribution List

In ConsoleOne, you can grant rights to users to modify distribution lists from the GroupWise Windows client. However, users cannot create or delete distribution lists; that can be done only in ConsoleOne by an administrator.

To grant edit rights to a specific distribution list to one or more users:

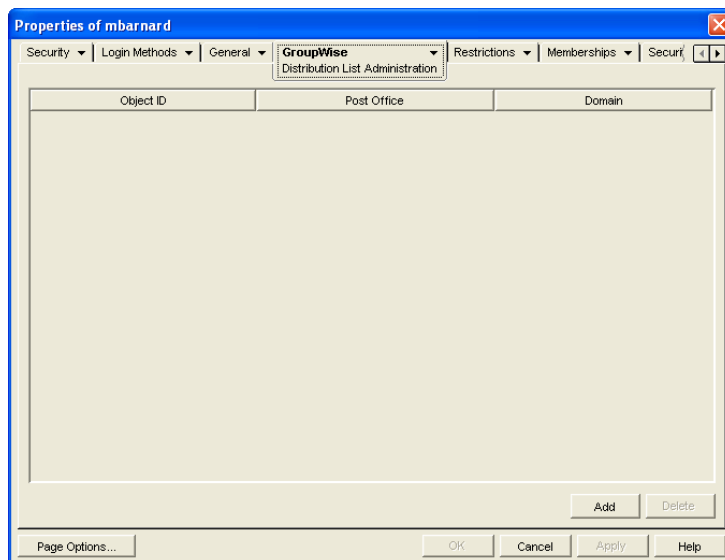
- 1 Browse to and right-click a Distribution List object, then click *Properties*.
- 2 Click *GroupWise > Administration*.



- 3 Click *Add*, then select one or more users who can edit the distribution list.
- 4 Click *OK* to grant the rights.
- 5 Notify the users that they have rights to modify the distribution list.

To give a specific user rights to edit one or more distribution lists:

- 1 Browse to and right-click a User object, then click *Properties*.
- 2 Click *GroupWise > Distribution List Administration*.



- 3 Click *Add*, then select one or more distribution lists for the user to edit.
- 4 Click *OK* to grant the rights.

- 5 Notify the user that he or she has rights to modify the distribution lists.

In the GroupWise client, the editable distribution list does not appear any different to the user who has rights to edit it, except that *Add* and *Remove* are active for that user.

In Online mode, the user can edit the distribution list in the GroupWise Address Book. In Caching mode, the user cannot edit the distribution list in the GroupWise Address Book. However, the user can edit the distribution list in the Address Selector in a new message.

18.7 Deleting a Distribution List

To delete a single distribution list:

- 1 In ConsoleOne, right-click the Distribution List object, then click *Delete*.
- 2 Click *Yes* to confirm the deletion.

To delete multiple distribution lists that belong to the same post office:

- 1 In ConsoleOne, right-click the Post Office object, then click *Properties*.
- 2 Click *GroupWise > Distribution Lists*.
- 3 Select one or more distribution lists, then click *Delete*.
- 4 Click *OK* to complete the deletion.

18.8 Managing E-Mail Addresses

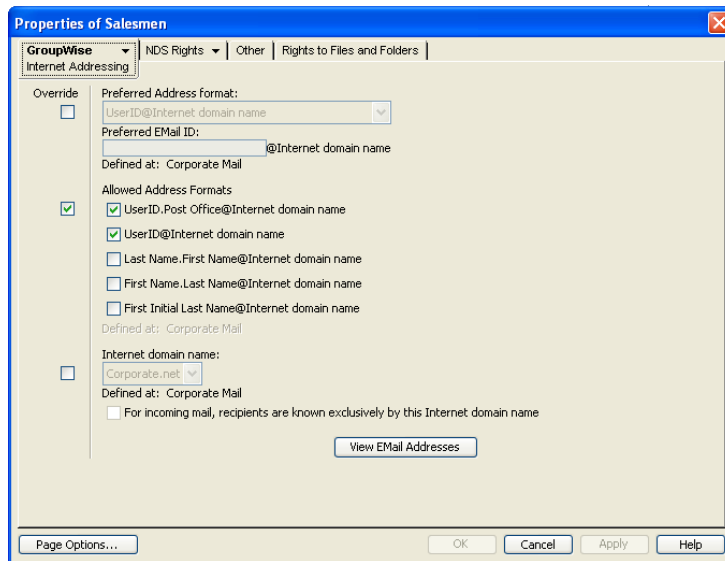
To ensure that distribution list addresses meet your needs, GroupWise enables you to determine the format and visibility of addresses, as well as create additional names for distribution lists. The following sections provide details:

- ♦ [Section 18.8.1, “Changing a Distribution List’s Internet Addressing Settings,” on page 286](#)
- ♦ [Section 18.8.2, “Changing a Distribution List’s Visibility in the Address Book,” on page 288](#)
- ♦ [Section 18.8.3, “Creating a Nickname for a Distribution List,” on page 289](#)

18.8.1 Changing a Distribution List’s Internet Addressing Settings

By default, a distribution list inherits its Internet address settings (preferred Internet address format, allowed address formats, and Internet domain name) from its post office, domain, or GroupWise system. If necessary, you can override these settings for a distribution list.

- 1 In ConsoleOne, right-click the Distribution List object, then click *Properties*.
- 2 Click *GroupWise*, then click *Internet Addressing* to display the Internet Addressing page.



- To override one of the settings, select the *Override* box, then change the setting.

Preferred Address Format: The preferred address format determines how the distribution list's address is displayed in the GroupWise Address Book and in sent messages.

At the distribution list level, only three preferred address formats are available. The address formats that include first name, last name, and first initial do not apply to distribution lists, so they are not available.

You can completely override the address format by explicitly defining the user portion of the address (*user@Internet domain name*). The user portion can include any RFC-compliant characters (no spaces, commas, and so forth). The distribution list name portion must be unique within its Internet domain. This means that a distribution list name can be used multiple times in your GroupWise system, provided it is used only once in each Internet domain.

Allowed Address Formats: The allowed address formats determine which address formats can be used to send messages to the distribution list.

Only the *UserID.Post Office@Internet domain name* and *UserID@Internet domain name* formats are valid for distribution lists. The formats that include first name, last name, and first initial are not valid.

For example, using DL1 as the distribution list ID, Research as the post office, and novell.com as the Internet domain, if you select the two valid formats, members of the distribution list receive messages sent using either of the following addresses:

dl1.research@novell.com
dl1@novell.com

Internet Domain Name: The Internet domain name, along with the preferred address format, is used when constructing the e-mail address that is displayed in the GroupWise Address Book and in the To field of sent messages.

Only the Internet domain names that have been defined are displayed in the list. Internet domain names must be defined at the system level (*Tools > GroupWise System Operations > Internet Addressing*). For more information, see [Section 45, "Configuring Internet Addressing," on page 717](#).

If you override the Internet domain name, the *For Incoming Mail, Recipients are Known Exclusively by This Internet Domain Name* option becomes available. Enable this option if you only want the distribution list to be able to receive messages addressed with this Internet domain name. If you don't enable this option, the distribution list receive messages addressed using any of the Internet domain names assigned to your GroupWise system.

View E-Mail Addresses: Click *View E-Mail Addresses* to display a list of the various e-mail address formats that can successfully deliver e-mail to this distribution list, including any nicknames or gateway aliases that have been defined for this distribution list. For more information, see:

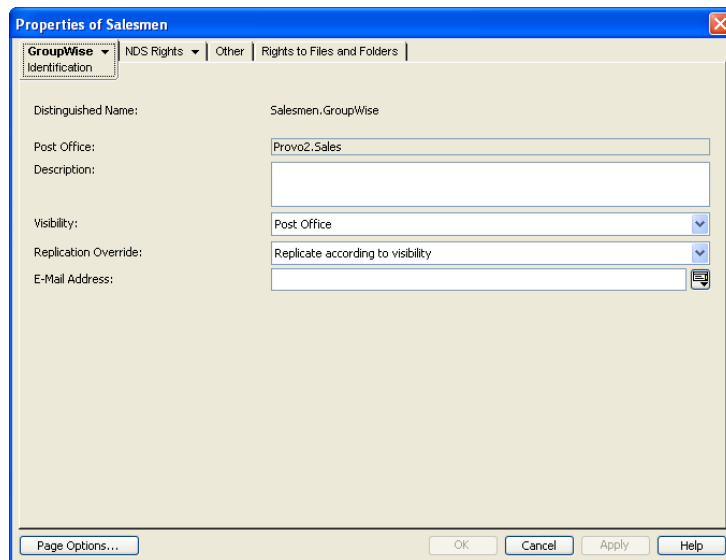
- ♦ [Section 45.1.4, “Preferred Address Format,” on page 718](#) and [Section 45.1.5, “Allowed Address Formats,” on page 721](#)
- ♦ [Section 14.7.4, “Creating a Nickname for a User,” on page 250](#)
- ♦ [Section 45.3, “Transitioning from SMTP Gateway Aliases to Internet Addressing,” on page 727](#)

4 Click *OK* to save your changes.

18.8.2 Changing a Distribution List's Visibility in the Address Book

A distribution list's visibility level determines which users see the distribution list in the Address Books. You can control the availability of a distribution list by displaying it in the Address Book for all users in your GroupWise system, in the Address Book for those users in the distribution list's domain only, in the Address Book for those users on the distribution list's post office only, or not displaying it at all.

1 In ConsoleOne, right-click the Distribution List object, then click *Properties*.



2 In the *Visibility* field, select the desired visibility level.

System: The distribution list is displayed in the Address Book for all users in your GroupWise system.

Domain: The distribution list is displayed in the Address Book for all users in the distribution list's domain.

Post Office: The distribution list is displayed in the Address Book for all users on the distribution list's post office.

None: The distribution list not displayed in the Address Book.

- 3 Click *OK* to save your changes.

18.8.3 Creating a Nickname for a Distribution List

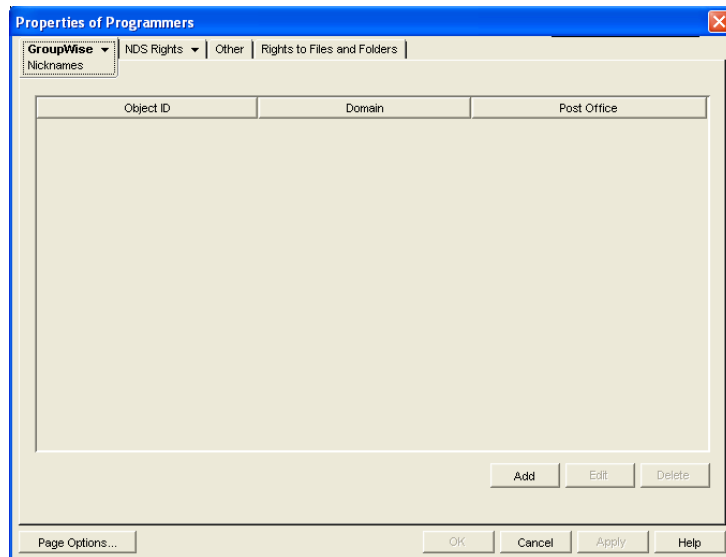
Each distribution list has a specific GroupWise address consisting of the distribution list's name, post office, and domain (*distribution_list_name.post_office.domain*). You can assign one or more nicknames to a distribution list to give it an alternate address. Each part of the address (*distribution_list_name*, *post_office*, and *domain*) can be different than the distribution list's actual address.

For example, you might want to create a nickname for a distribution list you have just moved (see [Section 18.8.3, "Creating a Nickname for a Distribution List," on page 289](#)) or renamed (see [Section 18.5, "Renaming a Distribution List," on page 284](#)). The nickname, which would be the distribution list's old address, would ensure that any use of the old address would result in the new address being used instead.

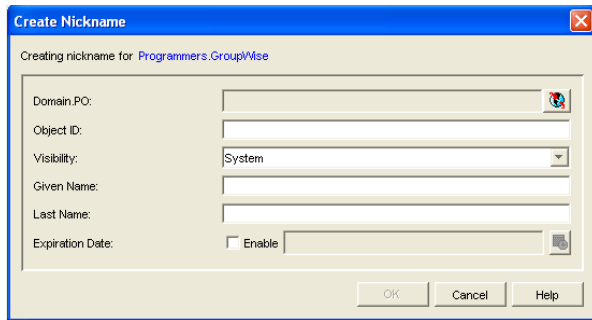
Nicknames are not displayed in the Address Book, which means users need to know the nickname to use it.

To create a nickname for a distribution list:

- 1 In ConsoleOne, right-click the Distribution List object, then click *Properties*.
- 2 Click *GroupWise > Nicknames* to display the Nicknames page.



- 3 Click *Add* to display the Create Nickname dialog box.



4 Fill in the following fields:

Domain.PO: Select the post office where you want to assign the nickname. This can be any post office in your GroupWise system; it does not have to be the distribution list's post office.

Object ID: Specify the name to use as the *distribution_list_name* portion of the nickname.

Visibility: Nicknames are not displayed in the Address Book. To use a nickname, a message sender must specify the nickname's address. However, nickname visibility does affect nickname replication to other GroupWise systems.

External Sync Override: This option applies only if your GroupWise system links to and synchronizes with an external system, as described in “[Connecting to Other GroupWise Systems](#)” in the *GroupWise 8 Multi-System Administration Guide*.

- ♦ **Synchronize According to Visibility:** The nickname information is synchronized to external systems only if visibility is set to *System*.
- ♦ **Synchronize Regardless of Visibility:** The nickname information is synchronized to external systems regardless of the object visibility.
- ♦ **Don't Synchronize Regardless of Visibility** The nickname information is not synchronized to external systems.

Given Name: Ignore this field. It is not used for distribution list nicknames.

Last Name: Ignore this field. It is not used for distribution list nicknames.

Expiration Date: If you want the nickname to no longer work after a certain date, click Enable and then select the desired date.

5 Click *OK* to add the nickname to the list.

6 Click *OK* to save the changes to the Distribution List object.

18.9 Adding External Users to a Distribution List

Members of distribution lists must have corresponding eDirectory™ objects. If you want to add users to a distribution list, and the users do not belong to your GroupWise system, you must create objects to represent these external users within your GroupWise system.

- ♦ [Section 18.9.1, “Creating an External Domain,” on page 291](#)
- ♦ [Section 18.9.2, “Creating an External Post Office,” on page 291](#)
- ♦ [Section 18.9.3, “Creating an External User,” on page 291](#)

For more information, see [Section 6.8, “Adding External Users to the GroupWise Address Book,” on page 103](#).

18.9.1 Creating an External Domain

You create an external domain to represent the world outside your GroupWise system.

- 1 In ConsoleOne, right-click GroupWise System, then click *New > External Domain*.
- 2 Provide a unique name for the domain, then click *OK*.

18.9.2 Creating an External Post Office

You create an external post office in the external domain to hold External User objects.

- 1 In ConsoleOne, right-click the External Domain object, then click *New > External Post Office*.
- 2 Provide a unique name for the post office, then click *OK*.

18.9.3 Creating an External User

You create an external user so that it can be selected when adding members to a distribution list.

- 1 In ConsoleOne, right-click the External Post Office object, then click *New > External User*.
- 2 Provide a unique name for the user, then click *OK*.
- 3 Right-click the new External User object, then click *Properties*.
- 4 On the Identification page, fill in at least the first and last names.
- 5 Click *GroupWise > Internet Addressing*.
- 6 Select *Override*.
- 7 Select the preferred addressing format depending on how you want e-mail to this user to be addressed.
or
Provide a preferred e-mail ID.
- 8 Click *OK* to save the user information.
- 9 Follow the instructions in [Section 18.2, “Adding Members to a Distribution List,” on page 282](#) to add the external user to a distribution list.

Using eDirectory Groups as GroupWise Distribution Lists

19



Novell® eDirectory™ groups can be configured to function as GroupWise® distribution lists.

- ♦ Section 19.1, “Setting Up an eDirectory Group for Use in GroupWise,” on page 293
- ♦ Section 19.2, “Seeing Which Members of an eDirectory Group Have GroupWise Accounts,” on page 294
- ♦ Section 19.3, “Changing a Group’s Visibility in the Address Book,” on page 295
- ♦ Section 19.4, “Moving a Group,” on page 296
- ♦ Section 19.5, “Renaming a Group,” on page 297
- ♦ Section 19.6, “Removing a Group from GroupWise,” on page 297

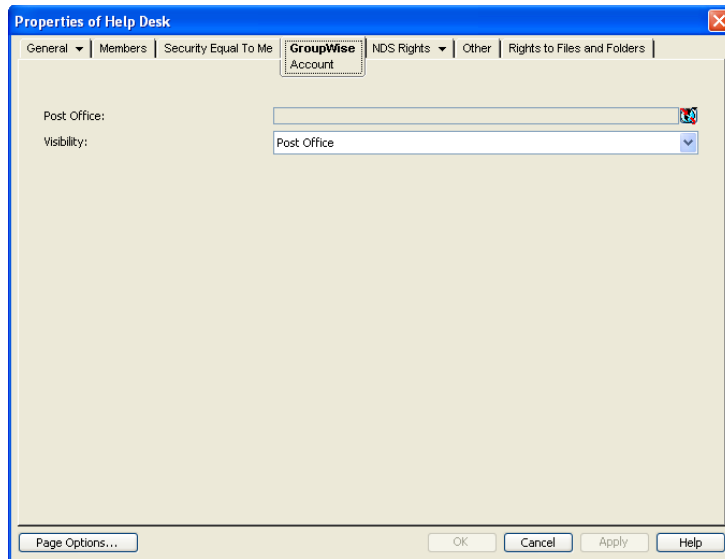
19.1 Setting Up an eDirectory Group for Use in GroupWise

By default, eDirectory groups are not automatically available for use as distribution lists in GroupWise. To make an eDirectory group available as a GroupWise distribution list, you need to assign it to a GroupWise post office.

- 1 In ConsoleOne®, right-click the eDirectory Group object, then click *Properties*.
Group objects and Distribution List objects have similar icons in ConsoleOne.

Icon	Object
	eDirectory Group object
	GroupWise Distribution List object

- 2 Click *GroupWise > Account* to display the Account page.



3 Fill in the following fields:

Post Office: Select the post office where you want to assign the group. You can choose any post office you want. If you plan to limit visibility of the group to users on a specific post office or in a specific domain, you should select that post office or a post office in the desired domain.

Visibility: Select the level at which the group is visible in the Address Book. *System* enables the group to be visible to all users in your GroupWise system. *Domain* enables the group to be visible to all users in the same domain as the group. *Post Office* enables the group to be visible to all users on the same post office as the group. Setting the visibility to *None* means that the group is not visible at any level. However, even if the group is not displayed in a user's Address Book, he or she can use the group by typing the group's name in a message's To field.

4 Click *OK* to save the changes.

The group is now treated like a GroupWise distribution list and is visible in the GroupWise View when you filter on distribution lists. However, its icon does not change.

When GroupWise users send messages to the group, only those group members who have GroupWise accounts receive messages.

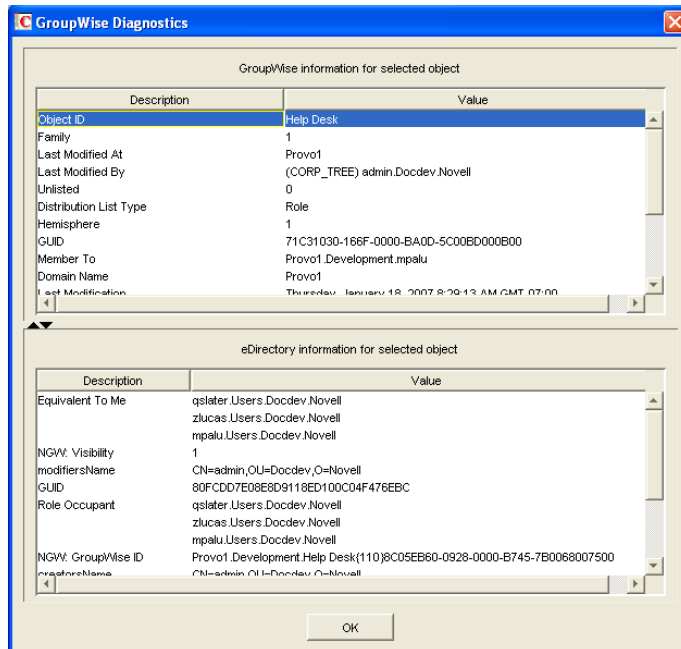
For information about using dynamic groups with GroupWise, see TID 3074853 in the [Novell Support Knowledgebase](http://www.novell.com/support) (<http://www.novell.com/support>).

19.2 Seeing Which Members of an eDirectory Group Have GroupWise Accounts

eDirectory groups can include members who have GroupWise accounts and members who do not have GroupWise accounts. When the group is used to address a message, only those members who have GroupWise accounts receive the message.

To see which members have GroupWise accounts and which ones do not:

- 1** In ConsoleOne, select the Group object, then click *Tools > GroupWise Diagnostics > Display Object*.



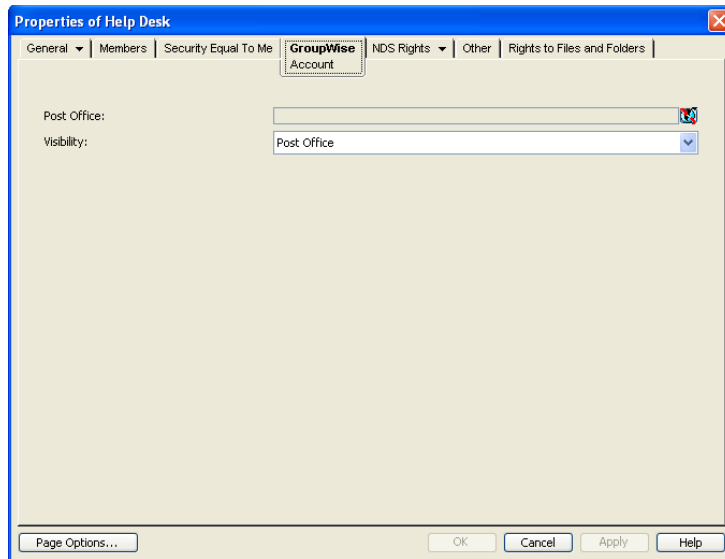
The *Member To* field in the top window displays the members who have GroupWise accounts. The *Role Occupant* field in the bottom window displays all members.

- 2 When you have finished viewing the information, click *OK*.

19.3 Changing a Group's Visibility in the Address Book

An eDirectory group's visibility level determines which users see the group in the Address Books. You can control the availability of a group by displaying it in the Address Book for all users in your GroupWise system, in the Address Book for those users in the group's domain only, in the Address Book for those users on the group's post office only, or not displaying it at all.

- 1 In ConsoleOne, right-click the Group object, then click *Properties*.
- 2 Click *GroupWise > Account* to display the Account page:



- 3 In the *Visibility* field, select the desired visibility level.

System: The group is displayed in the Address Book for all users in your GroupWise system.

Domain: The group is displayed in the Address Book for all users in the group's domain.

Post Office: The group is displayed in the Address Book for all users on the group's post office.

None: The group is not displayed in the Address Book.

- 4 Click *OK* to save your changes.

19.4 Moving a Group

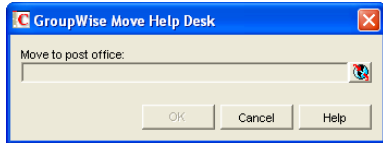
If necessary, you can move an eDirectory group from one post office to another. For example, you might need to move a group from a post office you are removing.

The group retains the same name on the new post office as it has on the current post office. If another object (user, resource, distribution list, group, or organizational role) assigned to the new post office has the same name, you must rename one of them before you move the group. For details, see [Section 18.5, "Renaming a Distribution List," on page 284](#).

To move an eDirectory group from one post office to another:

- 1 In ConsoleOne, right-click the Group object in the GroupWise View, then click *Move* to display the GroupWise Move dialog box.

IMPORTANT: You must select the eDirectory Group object in the GroupWise View by listing GroupWise distribution lists. If you select the Group object in the standard Console View, you move the Group object from one eDirectory container to another, not the group/distribution list from one post office to another.



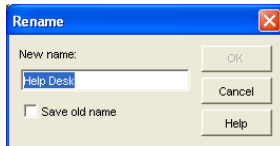
- 2 Select the post office to which you want to move the group, then click *OK* to move the group.

19.5 Renaming a Group

Situations might arise where you need to give an eDirectory group a new name. For example, you might need to move the group to another post office that already has an object (user, resource, distribution list, group, or organizational unit) with the same name.

When you rename an eDirectory group, you rename the Group object. This means that not only are you changing the name in GroupWise, but also in eDirectory.

- 1 In ConsoleOne, right-click the Group object, then click *Rename* to display the Rename dialog box.



- 2 In the *New Name* field, specify the new name for the group.
- 3 Make sure the *Save Old Name* box is not selected. Saving the old name causes duplicate groups to appear in the Address Book.
- 4 Click *OK* to rename the group.

19.6 Removing a Group from GroupWise

If you decide that you no longer want an eDirectory group to be a distribution list in GroupWise, you can remove its association with a GroupWise post office, so that it returns to being just an eDirectory group.

- 1 In ConsoleOne, right-click the Group object, click *Delete*, then click *Yes* to confirm that you want to delete the object.
- 2 In the eDirectory Account box, deselect *Delete* to retain the Group object in eDirectory.
The *Delete* option in the GroupWise Account box is selected by default and cannot be deselected.
- 3 Click *OK* twice to complete the deletion.

Using eDirectory Organizational Roles as GroupWise Distribution Lists

20

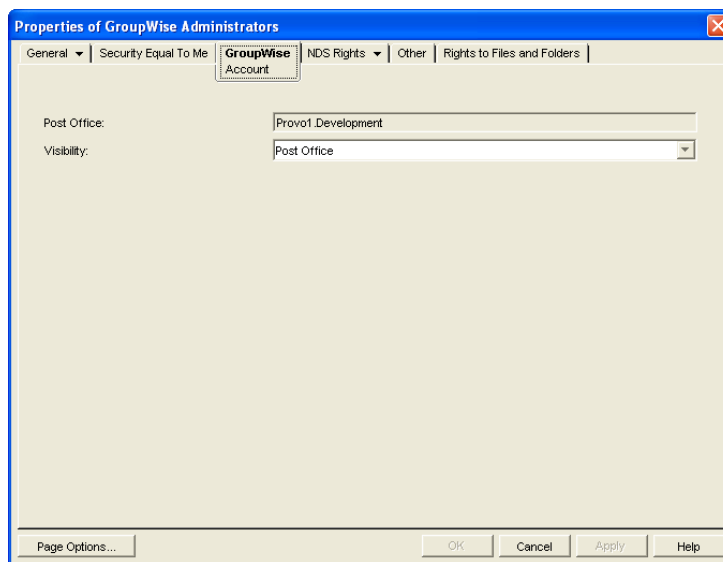
Organizational roles can be configured to function as GroupWise® distribution lists.

- ♦ Section 20.1, “Setting Up an Organizational Role for Use in GroupWise,” on page 299
- ♦ Section 20.2, “Seeing Which Members of an Organizational Role Have GroupWise Accounts,” on page 300
- ♦ Section 20.3, “Changing an Organizational Role’s Visibility in the Address Book,” on page 301
- ♦ Section 20.4, “Moving an Organizational Role,” on page 301
- ♦ Section 20.5, “Renaming an Organizational Role,” on page 302
- ♦ Section 20.6, “Removing an Organizational Role from GroupWise,” on page 303

20.1 Setting Up an Organizational Role for Use in GroupWise

By default, Novell® eDirectory™ organizational roles are not automatically available for use as distribution lists in GroupWise. To make an organizational role available, you need to assign it to a GroupWise post office.

- 1 In ConsoleOne®, right-click the Organizational Role object, then click *Properties*.
- 2 Click the *GroupWise* tab to display the Account page.



- 3 Fill in the following fields:

Post Office: Select the post office where you want to assign the organizational role. You can choose any post office you want. If you plan to limit visibility of the organizational role to users on a specific post office or in a specific domain, you should select that post office or a post office in the desired domain.

Visibility: Select the level at which the role is visible in the Address Book. *System* enables the role to be visible to all users in your GroupWise system. *Domain* enables the role to be visible to all users in the same domain as the role. *Post Office* enables the role to be visible to all users on the same post office as the role. Setting the visibility to *None* means that the role is not visible at any level. However, even if the role is not displayed in a user's Address Book, he or she can use the role by typing the role's name in a message's To field.

4 Click *OK* to save the changes.

The organizational role is now treated like a GroupWise distribution list and is visible in the GroupWise View when you filter on distribution lists. However, its icon does not change.

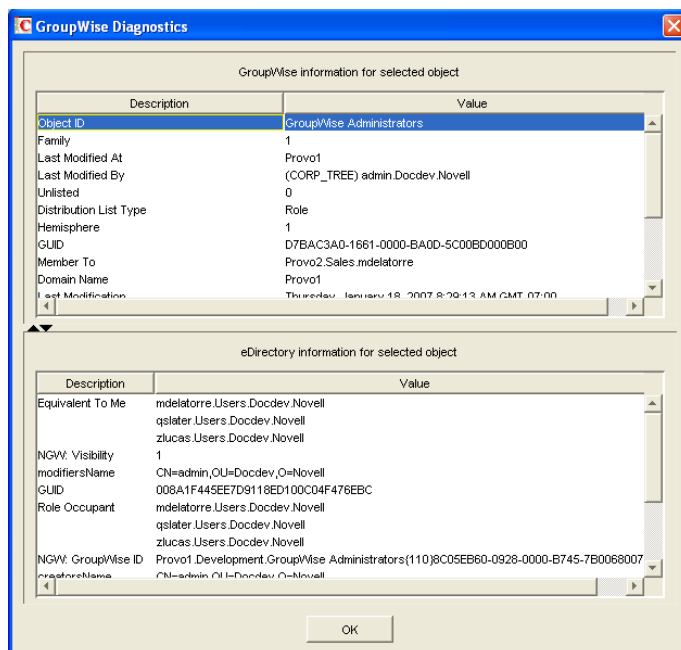
When GroupWise users send messages to the organization role, only those role members who have GroupWise accounts receive messages.

20.2 Seeing Which Members of an Organizational Role Have GroupWise Accounts

eDirectory organizational roles can include members who have GroupWise accounts and members who do not have GroupWise accounts. When the organizational role is used to address a message, only those members who have GroupWise accounts receive the message.

To see which members have GroupWise accounts and which ones do not:

1 In ConsoleOne, select the Organizational Role object, then click *Tools > GroupWise Diagnostics > Display Object*.



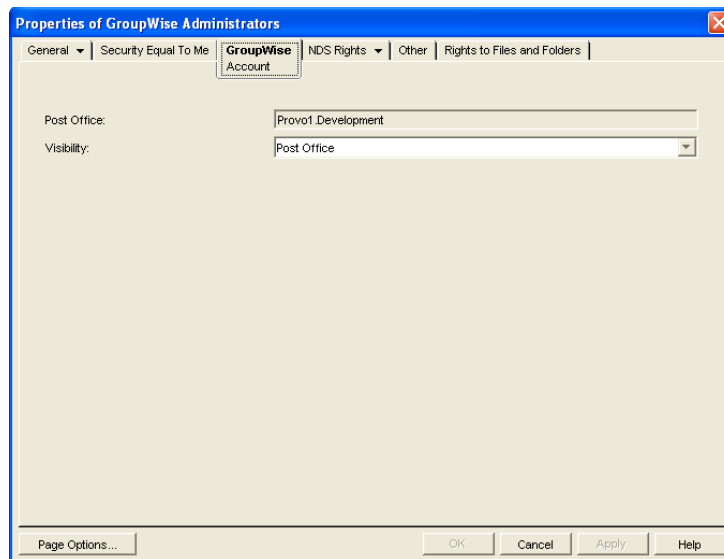
The top window displays the members who have GroupWise accounts. The bottom window displays all members.

- 2 When you have finished viewing the information, click *OK*.

20.3 Changing an Organizational Role's Visibility in the Address Book

An organizational role's visibility level determines which users see the role in the Address Books. You can control the availability of a role by displaying it in the Address Book for all users in your GroupWise system, in the Address Book for those users in the role's domain only, in the Address Book for those users on the role's post office only, or not displaying it at all.

- 1 In ConsoleOne, right-click the Organizational Role object, then click *Properties*.
- 2 Click *GroupWise > Account* to display the Account page:



- 3 In the *Visibility* field, select the desired visibility level.

System: The organizational role is displayed in the Address Book for all users in your GroupWise system.

Domain: The organizational role is displayed in the Address Book for all users in the role's domain.

Post Office: The organizational role is displayed in the Address Book for all users on the role's post office.

None: The organizational role is not displayed in the Address Book.

- 4 Click *OK* to save your changes.

20.4 Moving an Organizational Role

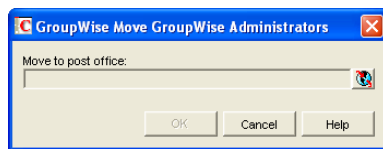
If necessary, you can move an organizational role from one post office to another. For example, you might need to move an organizational role from a post office you are removing.

The organizational role retains the same name on the new post office as it has on the current post office. If another object (user, resource, distribution list, group, or organizational role) assigned to the new post office has the same name, you will need to rename one of them before you move the organizational role. For details, see [Section 18.5, “Renaming a Distribution List,” on page 284](#).

To move an organizational role from one post office to another:

- 1 In ConsoleOne, right-click the Organizational Role object in the GroupWise View, then click *Move* to display the GroupWise Move dialog box.

IMPORTANT: You must select the Organizational Role object in the GroupWise View by listing GroupWise distribution lists. If you select the Organizational Role object in the standard Console View, you move the Organizational Role object from one eDirectory container to another, not the organizational role/distribution list from one post office to another.



- 2 Select the post office to which you want to move the organizational role, then click *OK* to move the organizational role.

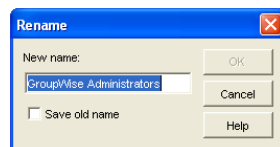
20.5 Renaming an Organizational Role

Situations might arise where you need to give an organizational role a new name. For example, you might need to move the organizational role to another post office that already has an object (user, resource, distribution list, group, or organizational unit) with the same name.

When you rename an organizational role, you rename the Organizational Role object. This means that you are not only changing the name in GroupWise, but also in eDirectory.

To rename an organizational role:

- 1 In ConsoleOne, right-click the Organizational Role object, then click *Rename* to display the GroupWise Rename dialog box.



- 2 In the *New Name* field, specify the new name for the organizational role.
- 3 Click *OK* to rename the organizational role.

20.6 Removing an Organizational Role from GroupWise

If you decide that you no longer want an organizational role to be a public address list in GroupWise, you can remove its association with a GroupWise post office, so that it returns to being just an eDirectory organizational role.

- 1** In ConsoleOne, right-click the Organizational Role object, click *Delete*, then click *Yes* to confirm that you want to delete the object.
- 2** In the eDirectory Account box, deselect *Delete* to retain the Organizational Role object in eDirectory.
The *Delete* option in the GroupWise Account box is selected by default and cannot be deselected.
- 3** Click *OK* twice to complete the deletion.

