

You can synchronize your Novell Vibe files with your computer, then modify the files without accessing the Vibe site directly. Additions and modifications are synchronized between Vibe and your computer. If you delete a Vibe file from your desktop, it is not deleted in Vibe, and is synchronized back to your desktop at the next synchronization.

Your Vibe administrator must enable this functionality in order for it to be available. For information on how administrators can enable this functionality, see [“Configuring Vibe Desktop and the Microsoft Office Add-In”](#) in the *Novell Vibe 3.4 Administration Guide*.

Supported Environments

To use Vibe Desktop for Mac, ensure that your software meets the following prerequisites:

- ◆ Mac OS 10.6, 10.7, and 10.8 (64-bit only)
- ◆ Novell Vibe 3.3 or later configured with HTTPS

Getting Started

- ◆ [“Understanding Synchronization” on page 1](#)
- ◆ [“Downloading and Installing Vibe Desktop” on page 2](#)
- ◆ [“Configuring Vibe Desktop for the First Time” on page 2](#)

UNDERSTANDING SYNCHRONIZATION

- ◆ [“When Synchronization Occurs” on page 1](#)
- ◆ [“Which Folders Are Synchronized” on page 1](#)
- ◆ [“What Actions Are Supported” on page 1](#)
- ◆ [“What Actions Are Not Supported” on page 1](#)

When Synchronization Occurs

Synchronization occurs at an interval designated by your Vibe administrator. The default is every 15 minutes.

You can manually synchronize files if you do not want to wait for the scheduled synchronization. For more information, see [“Manually Synchronizing Files” on page 3](#).

Which Folders Are Synchronized

Only files in Files folders and Photo Album folders within your personal workspace are synchronized by default.

You can easily configure files in Files folders and Photo Album folders within your teams or followed places to be synchronized, as described in [“Synchronizing Your Teams and Favorite Places” on page 3](#).

It is possible to configure other types of Vibe folders (such as Blog folders or Wiki folders) within your personal workspace, team workspaces, or followed places to be synchronized. For information on how to accomplish this, see [“Configuring Folders to Be Synchronized” on page 4](#).

What Actions Are Supported

When you perform any of the following actions on documents, the action is synchronized between your computer’s file system and the Vibe server:

- ◆ Create documents
- ◆ Modify documents

What Actions Are Not Supported

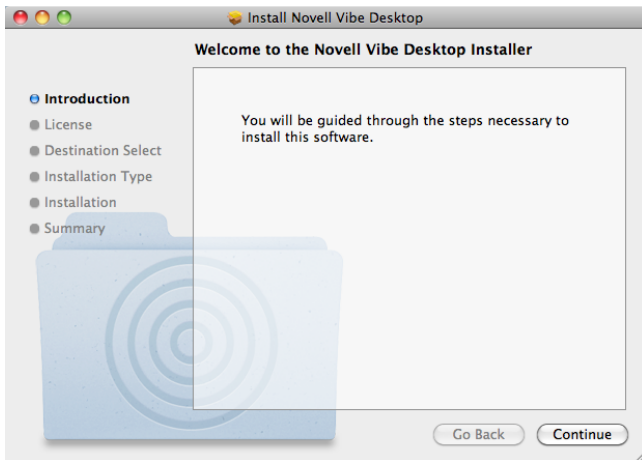
In order to prevent you from inadvertently making changes on the Vibe server that you do not want to make, the following actions are not synchronized between your computer’s file system and the Vibe server:

- ◆ Delete documents
- ◆ Delete folders
- ◆ Create folders

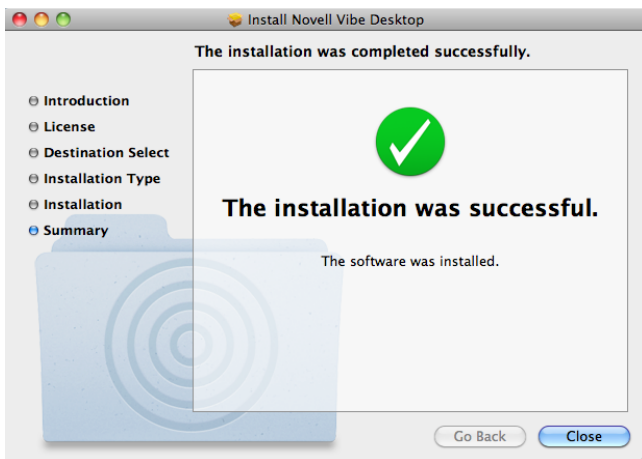
DOWNLOADING AND INSTALLING VIBE DESKTOP

- 1 On your personal workstation, download Vibe Desktop from the [Novell Downloads Web site](https://download.novell.com/SummaryFree.jsp?buildid=CIYcS72xD_c~) (https://download.novell.com/SummaryFree.jsp?buildid=CIYcS72xD_c~).
- 2 Run the downloaded `NovellVibeDesktop-version.pkg` file.

If you do not have the Microsoft .NET Framework 4 already installed on your workstation, you are prompted to accept the license agreement and install it.



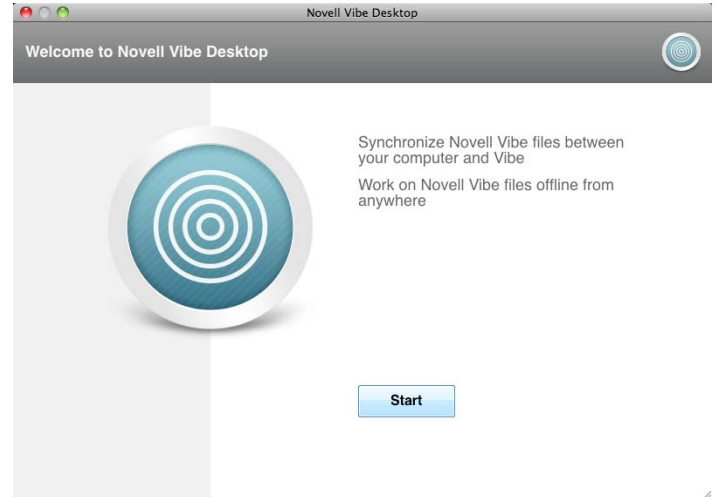
- 3 Click *Continue*.
- 4 Select the language to view the license agreement, click *Continue*, then click *Agree*.
- 5 Change the installation location for Vibe Desktop, or simply click *Continue* to accept the default location.
- 6 Click *Install*.



- 7 After the installation finishes, continue with “[Configuring Vibe Desktop for the First Time](#)” on page 2.

CONFIGURING VIBE DESKTOP FOR THE FIRST TIME


After you have downloaded and installed Vibe Desktop for the first time as described in “[Downloading and Installing Vibe Desktop](#)” on page 2, you are prompted to configure it. This process includes entering account information, choosing which workspaces and folders to synchronize, and choosing where to store information on your computer’s file system.




- 1 Click *Start* to begin setting up Vibe Desktop.
- 2 In the *Account Information* section, specify the following information:
 - Server URL:** Specify the URL for the Vibe site where you want to synchronize files to your computer. For example, `https://vibe.mycompany.com`.
 - Username:** Specify the Vibe username that you use to log in to the Vibe site.
 - Password:** Specify the Vibe password that you use to log in to the Vibe site.
- 3 Click *Next*.
- 4 In the *Synchronized Workspaces* section, click *Add*, select which folders and workspaces you want to synchronize, then click *OK*.

Files folders and Photo Album folders within your personal workspace are synchronized by default. You can select Files folders and Photo Album folders in your teams or followed places to be synchronized. For more information about how to enable other kinds of folders to be synchronized, see “[Configuring Folders to Be Synchronized](#)” on page 4.
- 5 Click *Next*.
- 6 In the *Vibe Desktop Folder* section, click *Browse* if you want to change the installation location for Vibe Desktop, or simply click *Next* to accept the default location.

7 Click *Finish*.

Vibe Desktop is now running, and the *Vibe Desktop* icon  is visible in the menu bar.

Viewing Vibe Files from Your Computer

- 1 Click the *Vibe Desktop* icon  in the menu bar, then click *Open Desktop Folder*.

You can access the Vibe folder directly from your file system. By default, Vibe Desktop synchronizes Vibe files to the Vibe Desktop folder on your file system, in the `Places` directory.

For information on how to change the default location, see [“Changing the Vibe Desktop Location on Your File System” on page 4](#).

You should not synchronize files to a location on a network that can be accessed by multiple computers. If the Vibe Desktop folder is on a network location that is accessed by multiple computers, synchronization issues can occur when Vibe files accessed from either computer are out of sync with each other and with the Vibe server.

Manually Synchronizing Files

You can manually synchronize files between Vibe and your computer if you do not want to wait for the scheduled synchronization. Files must be closed before they can be synchronized.

- 1 Click the *Vibe Desktop* icon  in the menu bar, then click *Synchronize Now*.

Launching Vibe in a Browser from Vibe Desktop


You can launch Novell Vibe in a browser by using Vibe Desktop.

- 1 Click the *Vibe Desktop* icon  in the menu bar, then click *Launch Novell Vibe*.

Viewing Recent Activity

You can use Vibe Desktop to view activity that has recently taken place. For example, you can see the date and time that Vibe folders were synchronized, which files were modified, and so forth.

To view recent Vibe Desktop activity:

- 1 Click the *Vibe Desktop* icon  in the menu bar, then click *Open Desktop Console*.
- 2 Click *Recent Activity*.

Viewing System Alerts

Vibe Desktop might need to make you aware of various alerts, such as new software updates, expired passwords, server downtime, and so forth.

To view system alerts:


- 1 Click the *Vibe Desktop* icon  in the menu bar, then click *Open Desktop Console*.
- 2 Click *System Alerts*.

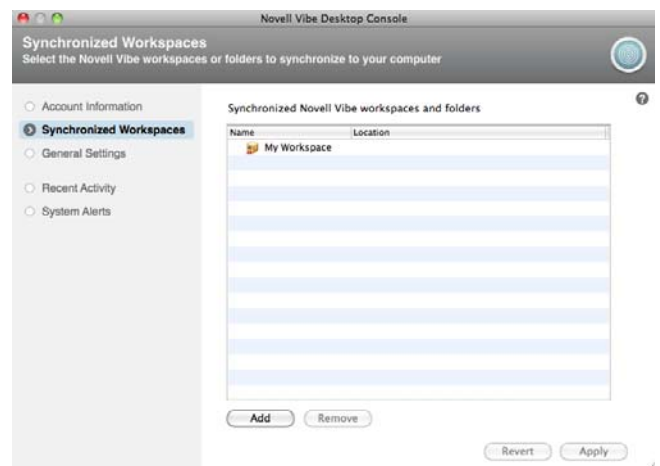
Synchronizing Your Teams and Favorite Places

When you first configure Vibe Desktop, you can choose workspaces and folders in your teams or favorite places to synchronize. You can also configure Vibe Desktop to synchronize files in your teams and favorite places any time after the initial configuration.

Before you can synchronize favorite workspaces and folders, you must ensure that the workspaces and folders that you want to synchronize have been added as favorites in Vibe. For information on how to add a workspace or folder as a favorite, see [“Adding a Favorite Place” \(http://www.novell.com/documentation/vibe34/vibe34_user/data/bjqczjz.html#nav_favorites_add\)](http://www.novell.com/documentation/vibe34/vibe34_user/data/bjqczjz.html#nav_favorites_add) in the *Novell Vibe 3.4 User Guide*.

To configure your teams and favorite places in Vibe to be synchronized to your computer:

- 1 Click the *Vibe Desktop* icon  in the menu bar, then click *Open Desktop Console*.
- 2 Click *Synchronized Workspaces* to display the workspaces that are currently being synchronized.



- 3 Click *Add*.
- 4 Expand *My Teams* and *My Favorites*, then select the workspace or folder that you want to be synchronized to your computer.

By default, only Files folders and Photo Album folders can be synchronized. Folders that are dimmed cannot be selected by default. For information on how to configure these folders to be synchronized, see “Configuring Folders to Be Synchronized” on page 4.

5 Click *OK*.

Configuring Folders to Be Synchronized

- “Synchronizing Files Folders and Photo Album Folders” on page 4
- “Synchronizing Mirrored Files Folders and Micro-Blog Folders” on page 4
- “Synchronizing All Other Folder Types” on page 4

SYNCHRONIZING FILES FOLDERS AND PHOTO ALBUM FOLDERS

Files folders and Photo Album folders can be easily synchronized to your computer with Vibe Desktop because they require each file to have a unique name. For more information on how to synchronize Files folders and Photo Album folders that are not already synchronized, see “Synchronizing Your Teams and Favorite Places” on page 3.

SYNCHRONIZING MIRRORED FILES FOLDERS AND MICRO-BLOG FOLDERS

Synchronizing Mirrored Files folders and Micro-Blog folders is not supported in this release of Vibe Desktop.

SYNCHRONIZING ALL OTHER FOLDER TYPES

Some types of Vibe folders such as Blog folders and Wiki folders must first be configured in Vibe in order to be synchronized with Vibe Desktop because by default these types of folders allow you to add multiple files with the same name to a single folder. Synchronizing folders that have multiple files with the same name would be confusing in Vibe Desktop because when you view a folder through Vibe Desktop, you see only the files that are within the folder and not the entries that contain each file.

You can configure folders such as Blog folders to require unique filenames if you have rights to edit the folder in Vibe. After you configure a folder in this way, you can then synchronize the folder to your computer with Vibe Desktop.


- 1 When you access Vibe from your browser, navigate to the folder that you want to configure to support Vibe Desktop.
- 2 Click *Folder > Edit Folder* in the Action toolbar.
- 3 Near the bottom of the page, select *Require that all files uploaded into this folder have a unique name*.
- 4 Click *OK*.

Changing the Vibe Desktop Location on Your File System

By default, Vibe Desktop is installed in the `Users/username/Vibe` folder on your file system.


The `vibe` folder contains a folder that is named after the Vibe account name that you created when you first configured Vibe Desktop, as described in “Configuring Vibe Desktop for the First Time” on page 2. This folder contains all of your synchronized files. To quickly access this folder, follow the steps in “Viewing Vibe Files from Your Computer” on page 3.

When you first configure Vibe Desktop, you can specify the installation location on your file system. You can change the location of the Vibe folder at any time after initial configuration:

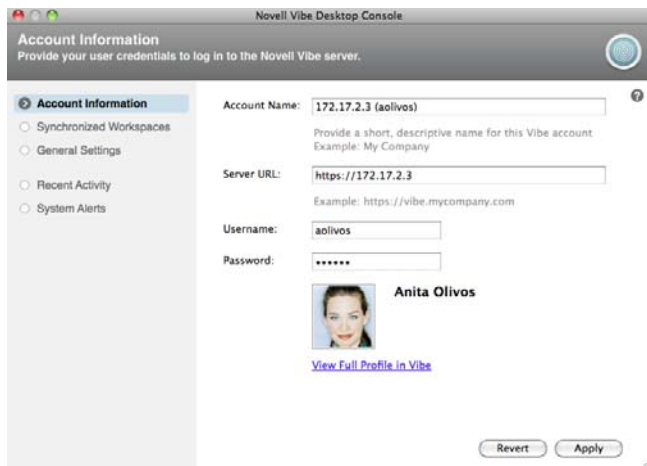
- 1 Click the *Vibe Desktop* icon  in the menu bar, then click *Open Desktop Console*.
- 2 Click *General Settings*, then click *Browse* to browse to the new location on the file system where you want the Vibe folder to reside.
- 3 Click *OK > Apply*.

Changing Your Vibe Account Information for Vibe Desktop

When you first configure Vibe Desktop, you specify your account information and Vibe server information. You can change your Vibe Desktop account information and Vibe server information at any time after the initial configuration:

- 1 Click the *Vibe Desktop* icon  in your menu bar.
- 2 Click *Open Desktop Console*.
- 3 Click *Account Information* in the Novell Vibe Desktop Console dialog box.
- 4 Specify the following information:
 - Account Name:** Specify a descriptive name for the Vibe account. A folder with this name is created in your user directory in the file system.
 - Server URL:** Specify the URL for the Vibe site where you want to synchronize files to your computer. For example, `https://vibe.mycompany.com`.
 - Username:** Specify the Vibe username that you use to log in to the Vibe site.
 - Password:** Specify the Vibe password that you use to log in to the Vibe site.

5 Click *Apply*.



Uninstalling Novell Vibe Desktop

Complete the following sections to completely uninstall Vibe Desktop:

- ◆ “Deleting the Application” on page 5
- ◆ “Deleting Vibe Desktop Metadata” on page 5
- ◆ “Deleting Vibe Desktop Logs” on page 5
- ◆ “Deleting Credentials” on page 5

DELETING THE APPLICATION

- 1 Move `/Applications/Novell Vibe Desktop` to the trash.

DELETING VIBE DESKTOP METADATA

You need to delete the Vibe Desktop metadata contained in `/Users/username/Library/Application Support/Novell/Vibe Desktop`.

Because the Library directory is usually a hidden directory, complete the following steps to accomplish this.

- 1 Click *Finder*, then from the menu bar, click *Go > Go to Folder*.
- 2 Specify `~/Library`, then click *Go*.
- 3 Double-click the `Application Support` folder.
- 4 Double-click the `Novell` folder.
- 5 Move the `Vibe Desktop` folder to the trash.

DELETING VIBE DESKTOP LOGS

You need to delete the Vibe Desktop logs contained in `/Users/username/Library/Logs/Novell/Vibe Desktop`.

Because the Library directory is usually a hidden directory, complete the following steps to accomplish this:

- 1 Click *Finder*, then from the menu bar, click *Go > Go to Folder*.
- 2 Specify `~/Library`, then click *Go*.
- 3 Double-click the `Logs` folder.
- 4 Double-click the `Novell` folder.
- 5 Move the `Vibe Desktop` folder to the trash.

DELETING CREDENTIALS

- 1 Click *Applications > Utilities > Keychain Access*.
- 2 Delete any passwords that have the names beginning with `Novell Vibe Desktop`.

Viewing Vibe Desktop Logs

If Vibe files are not being downloaded to your workstation as you expect, or you are experiencing other unexpected behaviors, you can see the `vibedesktop.log` file for more information.

- 1 Click *Finder*, then from the menu bar, click *Go > Utilities*.
- 2 Double-click *Console*.
- 3 Locate the Log List (navigation panel) on the left side of the console. If the Log List is not currently displayed, click *View > Show Log List* in the menu bar.
- 4 In the Log List on the left side of the console, in the *Files* section, expand `~/Library/Logs`, expand *Novell*, expand *Vibe Desktop*, then select `vibedesktop.log`.

Vibe Desktop FAQ

See the [Vibe Desktop FAQ \(http://www.novell.com/documentation/vibe34/vibe34_faq_desktop/data/vibe34_faq_desktop.html\)](http://www.novell.com/documentation/vibe34/vibe34_faq_desktop/data/vibe34_faq_desktop.html) for a list of frequently asked questions and answers.

Known Issues

For a list of known issues, see the [Novell Vibe Desktop Readme \(http://www.novell.com/documentation/vibe34/vibe_readme_desktop1/data/vibe_readme_desktop1.html\)](http://www.novell.com/documentation/vibe34/vibe_readme_desktop1/data/vibe_readme_desktop1.html).

Legal Notices: Copyright © 2012-2013 Novell, Inc. All rights reserved. No part of this publication may be reproduced, photocopied, stored on a retrieval system, or transmitted without the express written consent of the publisher. For Novell trademarks, see the [Novell Trademark and Service Mark list \(http://www.novell.com/company/legal/trademarks/tmliist.html\)](http://www.novell.com/company/legal/trademarks/tmliist.html). All third-party trademarks are the property of their respective owners.