

# Novell Open Enterprise Server

[www.novell.com](http://www.novell.com)

July 9, 2007

NETSTORAGE ADMINISTRATION  
GUIDE FOR LINUX\*



**Novell**<sup>®</sup>

## Legal Notices

Novell, Inc. makes no representations or warranties with respect to the contents or use of this documentation, and specifically disclaims any express or implied warranties of merchantability or fitness for any particular purpose. Further, Novell, Inc. reserves the right to revise this publication and to make changes to its content, at any time, without obligation to notify any person or entity of such revisions or changes.

Further, Novell, Inc. makes no representations or warranties with respect to any software, and specifically disclaims any express or implied warranties of merchantability or fitness for any particular purpose. Further, Novell, Inc. reserves the right to make changes to any and all parts of Novell software, at any time, without any obligation to notify any person or entity of such changes.

Any products or technical information provided under this Agreement may be subject to U.S. export controls and the trade laws of other countries. You agree to comply with all export control regulations and to obtain any required licenses or classification to export, re-export, or import deliverables. You agree not to export or re-export to entities on the current U.S. export exclusion lists or to any embargoed or terrorist countries as specified in the U.S. export laws. You agree to not use deliverables for prohibited nuclear, missile, or chemical biological weaponry end uses. Please refer to [www.novell.com/info/exports/](http://www.novell.com/info/exports/) for more information on exporting Novell software. Novell assumes no responsibility for your failure to obtain any necessary export approvals.

Copyright © 2005 Novell, Inc. All rights reserved. No part of this publication may be reproduced, photocopied, stored on a retrieval system, or transmitted without the express written consent of the publisher.

Novell, Inc. has intellectual property rights relating to technology embodied in the product that is described in this document. In particular, and without limitation, these intellectual property rights may include one or more of the U.S. patents listed at <http://www.novell.com/company/legal/patents/> and one or more additional patents or pending patent applications in the U.S. and in other countries.

Novell, Inc.  
404 Wyman Street, Suite 500  
Waltham, MA 02451  
U.S.A.  
[www.novell.com](http://www.novell.com)

*Online Documentation:* To access the online documentation for this and other Novell products, and to get updates, see [www.novell.com/documentation](http://www.novell.com/documentation).

## **Novell Trademarks**

eDirectory is a trademark of Novell, Inc.

NetWare is a registered trademark of Novell, Inc. in the United States and other countries.

NetWare Core Protocol and NCP are trademarks of Novell, Inc.

Novell is a registered trademark of Novell, Inc. in the United States and other countries.

Novell Client is a trademark of Novell, Inc.

Novell iFolder is a registered trademark of Novell, Inc. in the United States and other countries.

Nterprise is a trademark of Novell Inc.

SUSE is a registered trademark of SUSE LINUX AG, a Novell business.

## **Third-Party Materials**

All third-party trademarks are the property of their respective owners.



# Contents

<b>About This Guide</b>	<b>7</b>
<b>1 NetStorage Overview</b>	<b>9</b>
1.1 How NetStorage Works	9
1.2 What Users See When They Access NetStorage	11
1.3 What's Next	11
<b>2 What's New</b>	<b>13</b>
<b>3 Installing NetStorage</b>	<b>15</b>
3.1 Requirements	15
3.2 Installing NetStorage After the OES Installation	15
3.3 Changing the NetStorage Default Configuration	15
3.4 Creating Storage Location Objects and Lists	16
3.4.1 SSH Storage Location Objects	16
3.4.2 Creating a Storage Location Object	17
3.4.3 Creating a Storage Location List	18
3.5 What's Next	18
<b>4 Using NetStorage</b>	<b>19</b>
4.1 Accessing NetStorage	19
4.2 Viewing or Modifying Directory and File Attributes and Rights	20
4.3 Setting Directory Quotas on NSS Volumes and Directories	21
4.4 Purging and Salvaging Deleted NSS Files	22
<b>5 Administering NetStorage</b>	<b>23</b>
5.1 Using iManager to Administer NetStorage	23
5.2 Understanding the NetStorage Configuration Settings	23
5.2.1 Authentication Domains	24
5.2.2 Current Sessions	25
5.2.3 Files	25
5.2.4 iFolder Storage Provider	25
5.2.5 NetWare Storage Provider	26
5.2.6 NetStorage Options	27
5.2.7 NetStorage Statistics	29
5.2.8 Resource Usage	29
5.2.9 WebDAV Provider	29
5.2.10 Storage Location	29
5.3 What's Next	31
<b>6 Troubleshooting NetStorage</b>	<b>33</b>
6.1 Unexpected Results from Login Scripts	33
6.2 Slow Login	33
6.3 Configuring LDAP Contextless Login for Use with NetStorage	33

6.4	Novell iFolder 2.x and NetStorage . . . . .	34
6.5	Configuring NetStorage to Use the Proper Code Page or Character Set . . . . .	35
6.6	Configuring NetStorage with iChain . . . . .	35
6.6.1	Enabling Cookieless Authentication . . . . .	35
6.6.2	Editing the Logout.html.utf8 file . . . . .	36
6.7	Accessing CIFS or SSH Storage Locations . . . . .	36
6.8	LUM Must Have SSHD Access Enabled . . . . .	36
<b>A Documentation Updates</b>		<b>37</b>
A.1	November 1, 2005 (Open Enterprise Server SP2) . . . . .	37

# About This Guide

This guide includes information on Novell® NetStorage, which provides secure Internet-based access to files and folders on a Linux\* server in your network using either a browser or Microsoft\* Web Folders.

The following are included in this guide:

- ◆ [Chapter 1, “NetStorage Overview,” on page 9](#)
- ◆ [Chapter 2, “What’s New,” on page 13](#)
- ◆ [Chapter 3, “Installing NetStorage,” on page 15](#)
- ◆ [Chapter 4, “Using NetStorage,” on page 19](#)
- ◆ [Chapter 5, “Administering NetStorage,” on page 23](#)
- ◆ [Chapter 6, “Troubleshooting NetStorage,” on page 33](#)
- ◆ [Appendix A, “Documentation Updates,” on page 37](#)

## Documentation Conventions

In this documentation, a greater-than symbol (>) is used to separate actions within a step and items in a cross-reference path.

A trademark symbol (®, ™, etc.) denotes a Novell trademark. An asterisk (\*) denotes a third-party trademark.

When a single pathname can be written with a backslash for some platforms or a forward slash for other platforms, the pathname is presented with a backslash. Users of platforms that require a forward slash, such as UNIX\* or Linux, should use forward slashes as required by your software.

## User Comments

We want to hear your comments and suggestions about this guide and the other documentation included with Novell OES. Please use the User Comment feature at the bottom of each page of the OES online documentation.



# NetStorage Overview

# 1

NetStorage provides secure Internet-based access to files and folders on Linux and NetWare<sup>®</sup> servers on your network using either a browser or Microsoft Web Folders (Microsoft's implementation of WebDAV). NetStorage authentication relies on the power of Novell<sup>®</sup> eDirectory<sup>™</sup> to provide secure access, so Internet-based access is as secure as accessing files from within the network.

Novell NetStorage includes the following benefits:

- ◆ Lets users securely copy, move, rename, delete, read, and write files between any Internet-enabled machine and Linux or NetWare servers on your network.
- ◆ Eliminates the need to use a virtual private network (VPN) client to access files.
- ◆ Eliminates the need to e-mail or copy data from one machine to another.
- ◆ Supports Internet standards such as HTTP, HTTPS, HTML, XML, and WebDAV.
- ◆ Supports the use of drive mappings that users are accustomed to when they log in using the Novell Client<sup>™</sup> (see [Section 1.2, “What Users See When They Access NetStorage,” on page 11](#)).
- ◆ Supports access to users' Novell iFolder 2.x<sup>®</sup> accounts.
- ◆ Provides access to network files and folders via Novell Virtual Office, Novell iFolder 2.x, and Novell exteNd Director<sup>™</sup> 4.1 Standard Edition.
- ◆ Supports Storage Location objects used to display a specified name for a network directory in the NetStorage directory access list displayed through Microsoft Web Folders or a Web browser (see [“Storage Location” on page 29](#)).

With NetStorage installed on one Linux server with Novell Nterprise<sup>™</sup> Linux Services, users can potentially have access to any Linux or NetWare 5 or later server anywhere on your geographically dispersed network.

## 1.1 How NetStorage Works

NetStorage is installed on one Linux server that acts as a Middle Tier (also known as XTier) server. Middle Tier server configuration information is stored in an XML file on the Linux server. Novell iManager provides an easy method for changing Middle Tier configuration. Xtier is Novell's Web services framework and is used by various Novell products.

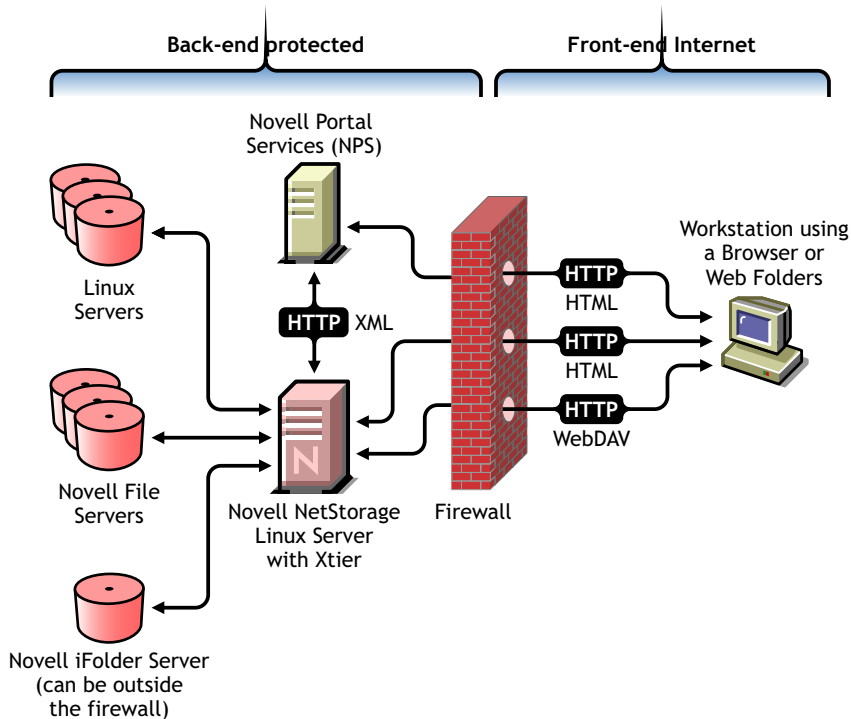
---

**NOTE:** Previous versions of NetStorage were administered using the NSAdmin utility. Configuration should now be done through Novell iManager.

---

After the Middle Tier server is set up, it appears as an Internet Web server to users and can be accessed either with a Web browser or with Microsoft Web Folders. NetStorage also includes a gadget that provides access through Novell exteNd Director 4.1 Standard Edition.

Figure 1-1 Middle Tier Server



The Middle Tier server communicates with the NetWare or Linux servers in the network and provides secure authentication using eDirectory and the users' usernames and passwords. NetStorage also provides secure access to files that users have located on Novell iFolder 2.x and earlier servers.

---

**IMPORTANT:**

Users must have their iFolder 2.x user accounts enabled through the iFolder server in order to access their files stored in iFolder using NetStorage. You must also enable the ability for users to set iFolder passphrases in NetStorage. For more information on iFolder, see the [Novell iFolder 2.1 online documentation \(http://www.novell.com/documentation/lg/ifolder21/index.html\)](http://www.novell.com/documentation/lg/ifolder21/index.html).

iFolder 2.1 does not support 56-bit encryption. If you are using 56-bit encryption, you must use iFolder 1.03.

---

All transactions can also be encrypted using SSL to increase the security. Novell iFolder transactions are secured using the iFolder encryption mechanism.

---

**NOTE:** Although SSL can be used to encrypt transactions, no server authentication is performed.

---

For more detailed information on creating and using login scripts, see the . For specific information on how login scripts are processed by NetStorage, see “[Setting Up Login Scripts](#) in the *Novell Client for Windows Installation and Administration Guide*.” See also [Login Script Processing by NetStorage" TID10068983 \(http://support.novell.com/cgi-bin/search/searchtid.cgi?/10068983.htm\)](http://support.novell.com/cgi-bin/search/searchtid.cgi?/10068983.htm).

## 1.2 What Users See When They Access NetStorage

The NetStorage Web page displays the network files and folders currently accessible for each user. For NetWare servers, NetStorage reads the user's login script to determine drive mappings, reads eDirectory User object properties to determine the path to the user's home directory, reads the user's Novell iFolder account, and then displays a list of files and folders based on this information. Storage Location objects are required for accessing files and directories on Linux servers and can also be used on NetWare servers. If Storage Location objects have been created and the user has rights to view these objects, the directories associated with these objects are also displayed.

NetStorage reads the container, profile, and user login scripts only from the primary eDirectory server specified during the installation and for NetWare servers, displays the user's drive mappings based only on those login scripts. However, because login scripts were designed to be processed by the Novell Client on the user's workstation, NetStorage processes only a subset of the login script functions.

---

**TIP:** If you specified alternate IP addresses or DNS names of servers in other eDirectory trees during the NetStorage installation, NetStorage reads the User object properties in the other eDirectory trees and also displays those home directories. This is useful if a user normally logs in to more than one eDirectory tree and you want that user to have access to additional home directories in different eDirectory trees using NetStorage. The User object name must be the same for each eDirectory tree.

---

NetStorage processes login scripts in order to find MAP statements. Each MAP statement defines a NetWare file system storage resource that the user will be able to access using NetStorage. IF, ELSE, END, INCLUDE, and EXIT commands are also recognized by NetStorage. All other login script statements are treated as comments and ignored. Finally, login script variables are also recognized. Variables are preceded by a percent sign (%). Since mapped drives do not exist in Linux, you must create and use Storage Location objects to access storage on Linux servers.

Users might have specific eDirectory rights to certain files and folders on your network, but will not be able to access those files and folders using NetStorage unless login script drive mappings exist to those folders or the files and folders are in the user's home directory, or Storage Location objects have been created. If you want to provide users with NetStorage access to a specific folder, you might have to add a drive mapping command to that folder in a login script (container, profile, or user) or create a Storage Location object.

## 1.3 What's Next

For more information on installing NetStorage, see [Chapter 3, “Installing NetStorage,” on page 15](#).

If you need to provide users with information on how to use NetStorage, see [Chapter 4, “Using NetStorage,” on page 19](#).

After you have installed NetStorage, you can administer settings. See [Chapter 5, “Administering NetStorage,” on page 23](#).

If you need to troubleshoot issues with NetStorage, see [Chapter 6, “Troubleshooting NetStorage,” on page 33](#).



# What's New

# 2

The following changes and enhancements were added to NetStorage for Linux for Novell Open Enterprise Server (OES) Support Pack 1. No changes and enhancements were added to NetStorage for Linux for Novell Open Enterprise Server (OES) Support Pack 2.

- ◆ The ability to add support for dotted usernames, e-mail address names, and Universal passwords. See [“Authentication Domains” on page 24](#).
- ◆ You can now sort directory and file listings in ascending or descending order by name, size, or date. See [Section 4.1, “Accessing NetStorage,” on page 19](#).
- ◆ Directory Map objects are now supported in login scripts.
- ◆ You can now browse volume objects down to subdirectories and individual files using iManager. This new functionality is enabled through NetStorage. NetStorage must be installed and configured correctly for this to work.



# Installing NetStorage

# 3

NetStorage is automatically installed and preconfigured to default settings during the Open Enterprise Server (OES) installation. OES is now part of the SUSE LINUX Enterprise Server (SLES) 9 installation. For more information, see the *OES Linux Installation Guide*. You can change the NetStorage configuration from the default settings during the OES installation. See [Changing the NetStorage Default Configuration](#) below for more information. For most networks, you need NetStorage installed on only one server; however, this might vary depending on the size of your network and your organization's needs. For example, if your company is geographically dispersed, you might want to install NetStorage on one server in each geographic region.

You can use Novell® iManager to change the NetStorage configuration after the OES installation. For more information on iManager, see [Chapter 5, “Administering NetStorage,” on page 23](#).

## 3.1 Requirements

In addition to meeting the requirements for OES, NetStorage requires the following:

- ❑ **Server Requirements:** At least one Linux server with OES or one NetWare 6.5 server in the Novell eDirectory™ tree where NetStorage will be installed.

An eDirectory replica is not required to be on the same server where NetStorage is installed.

---

**IMPORTANT:** In order to avoid time issues, this server must have time set correctly according to your network specifications. If time is not set, workstations might not be able to access files.

---

- ❑ **Workstation Requirements:** Netscape\* Navigator\* 4.7 or later, Internet Explorer 5.5 or later, Mozilla\*, other Linux browsers, or Microsoft Web Folders.

## 3.2 Installing NetStorage After the OES Installation

If you did not install during the OES installation, you can install it later. To do this, enter `yast2 netstorage` at the Linux server console and then continue with [Step 2 on page 15](#).

## 3.3 Changing the NetStorage Default Configuration

You can change the NetStorage default configuration during the OES installation. To do this

- 1 Start the OES installation and continue through the installation process until you reach the Installation Settings screen, then click the *NetStorage* link.
- 2 Choose whether you are installing locally or remotely, accept or change the admin name and password, then click *Next*.

*Locally* indicates that you are also installing eDirectory on this server. It is recommended that you install eDirectory on cluster nodes. If you are not installing eDirectory on this server, choose *Remote*.

- 3 Enter the IP address that you assigned to Novell iFolder 2.x<sup>®</sup>.

---

**IMPORTANT:** It is not currently possible to access iFolder 3.x using NetStorage.

---

The iFolder IP address is optional but, if specified, will allow NetStorage users to access and manipulate files and directories in their iFolder directories on the iFolder server.

Users must have their iFolder user accounts enabled through the iFolder server in order to access their files stored in iFolder using NetStorage. You must also enable the ability for users to set iFolder passphrases in NetStorage. For more information on iFolder, see the [Novell iFolder 2.1 Installation and Administration Guide](#).

- 4 Enter the IP address for the NetStorage Authentication Domain Host, or accept the default.

This is the IP address of a server in your eDirectory tree that has the master replica or a read/write replica of eDirectory.

The eDirectory server IP address is required for NetStorage to function properly. This does not necessarily have to be the IP address of the server where NetStorage is to be installed.

When a user attempts to log in, NetStorage searches the eDirectory database on the server you specify for the User object. If the User object is found, NetStorage attempts to authenticate the user to eDirectory.

- 5 Enter the Proxy User Name including the context, or accept the default.

This is required so that NetStorage has sufficient rights to get and save users' iFolder passphrases the first time they access iFolder. This prevents users from having to enter their passphrase when accessing files and directories on an iFolder server. The default is the Admin user that is created during the eDirectory installation.

- 6 Enter the Proxy User Password, or accept the default.

- 7 Enter the Users Context, or accept the default.

This is the eDirectory context for the users that will use NetStorage. NetStorage searches the eDirectory tree down from the specified context for User objects. If you want NetStorage to search the entire eDirectory tree, specify the root context.

## 3.4 Creating Storage Location Objects and Lists

After installing NetStorage, you might be able to see only your iFolder directory and a local shared directory on the Linux server using NetStorage. Storage Location objects are required for accessing files and directories on Linux servers unless you have the NCP<sup>™</sup> Server component of OES installed. They can also be used on NetWare servers. Without NCP Server, users might have specific eDirectory rights to certain files and folders on your network but will not be able to access those files and folders using NetStorage unless storage location objects have been created.

### 3.4.1 SSH Storage Location Objects

A new file access method has been added to NetStorage that allows access to files on Linux systems that don't support either NCP or CIFS protocols. This method uses the Secure Shell (SSH) protocol to access files on Linux systems. SSH is accessed by creating an eDirectory Storage Location object with a URL prefix of `ssh://`. For example:

```
ssh://yourserver.yourcompany.com/home/youruser
```

The username and password that you use to access files on your Linux system must be the same as those used to log in to NetStorage. You can use the SSH file access method with NetStorage to access files locally on your Linux system if NetStorage is running on that system. To do this, create a Storage Location object that uses the IP address of the local Linux machine with the `ssh://` prefix.

### 3.4.2 Creating a Storage Location Object

- 1 Start your browser (Internet Explorer 5 or later, Mozilla, etc.) and specify the URL for iManager.

The URL is `http://server_ip_address/nps/imanager.html`. Replace *server\_ip\_address* with the IP address or DNS name of the Linux server running NetStorage or the IP address for Apache-based services.

- 2 Enter your username and password.
- 3 In the left column, click *File Access* and then click *New Storage Location*.
- 4 Specify the object name, display name, directory location, context, and a comment.

The object name is the name of the object in the eDirectory tree.

The display name is the name to be displayed in the NetStorage directory access list. This is the shortcut name and is seen by users. If you use the same display name for two different Storage objects, a digit is added to the names to make each name unique.

The directory location is the location of the directory on the file system. The location is a URL that includes the file system type, server name, volume, and directory path.

If the storage being accessed is on a NetWare server, the URL must be in the following format:

`ncp://server_name/volume/path_to_directory`

For example:

`ncp://server1.digitalair.com/mktg/reports`

or

`ncp://111.222.3.4/mktg/reports`

If the storage being accessed is on a Linux server, the URL must be in one of the following formats:

- ♦ `ncp://server_name/volume/path_to_directory`  
This method requires that the NCP Server component of OES be installed on your Linux server.  
A storage location using this format can only access files on an NCP or NSS volume.
- ♦ `cifs://server_name/cifs_share_name`  
This method can be used if you have configured a CIFS or Samba share (cifs can be interchanged with smb in the format).
- ♦ `ssh://yourserver.yourcompany.com/home/youruser`  
This method allows access to files on Linux systems that don't support either NCP or CIFS (SMB) protocols.

If the file system is omitted, it is assumed that it is NCP.

The context is the directory context that the Storage Location object resides in. Click the object selector to select the context.

The comment is entered by the administrator and is not displayed to users.

- 5 Click *Create*, then click *OK*.

### 3.4.3 Creating a Storage Location List

After you create a Storage Location object, you must create a list of Storage Location objects that can be used with a specified User, Group, Profile, or Container object. Users will see the directory associated with the object the next time they log in. After this list is created, you can modify it in the same window by assigning additional Storage Location objects to the list or by deleting Storage Location objects from the list.

- 1 Start your browser (Internet Explorer 5 or later, Mozilla, etc.) and specify the URL for iManager.

The URL is `http://server_ip_address/nps/manager.html`. Replace *server\_ip\_address* with the IP address or DNS name of the Linux server running NetStorage or the IP address for Apache-based services.

- 2 Enter your username and password.
- 3 In the left column, click *File Access*, then click *Assign Storage Location to Object*.
- 4 Click the *Object Selector* button; select the User, Group, Profile, or Container object that the list is to be created for; then click *OK*.
- 5 Click the *Object Selector* button, select the Storage Location objects you want included in this list, then click *OK*.

You can select multiple Storage Location objects in the Object Selector window. When you select multiple Storage Location objects, they appear in the Selected Objects list. If the list already contains Storage Location objects and you want to add more, ensure that the original objects are still in the list before clicking *OK*.

You can remove existing storage locations by deleting their names from the list before clicking *OK*.

- 6 When you are finished creating or modifying the list, click *OK*.

## 3.5 What's Next

After you have installed NetStorage, inform users that they can access their files from the Web. Instructions for accessing files using NetStorage are available in [Chapter 4, “Using NetStorage,” on page 19](#).

If you need to change the NetStorage configuration, use iManager. See [Chapter 5, “Administering NetStorage,” on page 23](#).

# Using NetStorage

# 4

NetStorage provides secure Internet-based access to files and folders on Linux and NetWare<sup>®</sup> servers on your network using either a browser or Microsoft Web Folders (Microsoft's implementation of WebDAV). NetStorage authentication relies on the power of Novell<sup>®</sup> eDirectory<sup>™</sup> to provide secure access, so Internet-based access is as secure as accessing files from within the network.

Based on how NetStorage has been configured, the NetStorage Web page displays the network files and folders you have access to. Initially, you may be able to see only your iFolder directory, a local shared directory, and NSS volumes on the Linux server. Storage Location objects are required for accessing files and directories on Linux servers unless the NCP Server component of OES is installed. They can also be used on NetWare servers. For Linux servers with NCP Server installed, NetStorage reads your login script to determine drive mappings, reads eDirectory User object properties to determine your home directory, and then displays a list of files and folders based on mapped drives and home directories. If you usually log in to more than one eDirectory tree, you might have access to additional home directories in different eDirectory trees. If you have a Novell iFolder 2.x<sup>®</sup> account, the iFolder directory is also displayed. However, some NetStorage features such as Download and Lock are not available with Novell iFolder.

NetStorage reads the container, profile, and user login scripts only from the primary eDirectory server specified during the installation and displays the user's drive mappings based only on those login scripts.

Users might have specific eDirectory rights to certain files and folders on your network, but will not be able to access those files and folders using NetStorage unless Storage Location objects have been created, login script drive mappings exist to those folders, or the files and folders are in the user's home directory. If you want to provide users with NetStorage access to a specific folder, you might have to add a drive mapping command to that folder in a login script (container, profile, or user).

## 4.1 Accessing NetStorage

To access NetStorage from a workstation:

- 1 Start your browser or Microsoft Web Folders, then specify the URL for NetStorage.

The URL is `http://server_ip_address/oneNet/NetStorage/`. Replace *server\_ip\_address* with the IP address or DNS name of the server running NetStorage or the IP address for Apache-based services. If Apache-based services use a port other than 80, you must also specify that port number with the URL.

For example, if the IP address for NetStorage is 127.1.1.1, then you would specify `127.1.1.1/oneNet/NetStorage/`.

In the above example, if you had changed the port number to 51080, then you would specify `127.1.1.1:51080/oneNet/NetStorage/`.

---

**NOTE:** While the oneNet portion of the URL is required if using WebDAV (Web Folders) it is not required if using a browser. Using a browser, you could just use `127.1.1.1/NetStorage/`.

---

If you have the Persistent Cookies feature enabled (See [Section 5.2.6, “NetStorage Options,” on page 27](#)), the date and time on the workstation being used to access NetStorage should be within 24 hours of the date and time on the server running NetStorage in order to avoid conflicts.

**2** Enter your username and password.

NetStorage uses your Novell eDirectory username and password, so you don't need to remember or use a separate username or password.

You can use many of the same conventions for expanding and contracting folders and opening files that are available in Windows\* Explorer. To create new folders or copy, paste, delete, rename, move, upload, or download existing files using a browser, click the *File* menu. If you are using Internet Explorer, you can copy and move files and folders by dragging and dropping them. This functionality is not available with browsers other than Internet Explorer.

Clicking the *Folder View* button in the browser window displays folders in another column and lets you expand and contract folders. The Text View displays only the files and folders in the current directory and does not let you expand or contract folders. Clicking the *Name*, *Size*, or *Modified* headings lets you sort directory and file listings in ascending or descending order by name, size, or date.

Local files and folders in a shared directory on the Linux server where NetStorage is installed can be accessed using NetStorage. This is useful for uploading files to the local Linux server. The path to the shared folder is `/var/opt/novell/netstorage/shared`.

You cannot map drives or change login scripts from NetStorage.

NetStorage lets you upload and download multiple files and folders simultaneously.

## 4.2 Viewing or Modifying Directory and File Attributes and Rights

NetStorage provides the ability to view or change NSS and NCP™ directory and file attributes and rights. If you have created a Storage Location object using NCP, the ability to change file and directory attributes is limited unless you are logged in as user Admin or equivalent. This limitation does not apply if you have created a Storage Location object using SSH. See [“Creating a Storage Location Object” on page 29](#) for more information.

To view or modify directory or file rights using NetStorage:

**1** Start your browser and specify the URL for NetStorage.

The URL is `http://server_ip_address/oneNet/NetStorage/`. Replace *server\_ip\_address* with the IP address or DNS name of the server running NetStorage or the IP address for Apache-based services. If Apache-based services use a port other than 80, you must also specify that port number with the URL.

For example, if the IP address for NetStorage is 127.1.1.1, then you would specify `127.1.1.1/oneNet/NetStorage/`.

In the above example, if you had changed the port number to 51080, then you would specify `127.1.1.1:51080/oneNet/NetStorage/`.

---

**NOTE:** While the oneNet portion of the URL is required if using WebDAV (Web Folders) it is not required if using a browser. Using a browser, you could just use 127.1.1.1/NetStorage/.

---

The date and time on the workstation being used to access NetStorage should be reasonably close (within a few hours) to the date and time on the server running NetStorage to avoid conflicts.

- 2 Enter your username and password.

NetStorage uses your Novell eDirectory username and password, so you don't need to remember or use a separate username or password.

- 3 Right-click the directory or file you want to view or modify attributes or rights for and select *Properties*.

- 4 Click the *NetWare Info* tab to view or modify directory or file attributes. Click the *NetWare Rights* tab to view or modify file system trustee rights.

Although the option label refers to NetWare, use the option for your Linux NSS and non-NSS volumes, and your NetWare NSS volumes. For information about file system trustees, trustee rights, and attributes for directories and files on NSS volumes, see the *Novell Storage Services File System Administration Guide for OES*.

For additional information on directory and file attributes and rights, see the *Novell Client for Windows Installation and Administration Guide*.

---

**NOTE:** Viewing or changing directory and file attributes and rights using NetStorage is only possible using a browser. This functionality is not available using Microsoft Web Folders.

---

## 4.3 Setting Directory Quotas on NSS Volumes and Directories

Using NetStorage, you can create or change directory quotas on NSS volumes and directories for both NetWare and Linux. See “[Managing Space Quotas for Volumes, Directories, and Users](#)” in the *Novell Storage Services File System Administration Guide for OES*. You must be a user with rights equivalent to the Admin user to create or change directory quotas.

To create or change NSS directory quotas using NetStorage:

- 1 Start your browser and specify the URL for NetStorage.

The URL is `http://server_ip_address/oneNet/NetStorage/`. Replace *server\_ip\_address* with the IP address or DNS name of the server running NetStorage or the IP address for Apache-based services. If Apache-based services use a port other than 80, you must also specify that port number with the URL.

For example, if the IP address for NetStorage is 127.1.1.1, then you would specify 127.1.1.1/oneNet/NetStorage/.

In the above example, if you had changed the port number to 51080, then you would specify 127.1.1.1:51080/oneNet/NetStorage/.

---

**NOTE:** While the oneNet portion of the URL is required if using WebDAV (Web Folders) it is not required if using a browser. Using a browser, you could just use 127.1.1.1/NetStorage/.

---

The date and time on the workstation being used to access NetStorage should be reasonably close (within a few hours) to the date and time on the server running NetStorage to avoid conflicts.

**2** Enter your username and password.

NetStorage uses your Novell eDirectory username and password, so you don't need to remember or use a separate username or password.

**3** Right-click the directory or file you want to create or change a directory quota for and select *Properties*.

**4** Click the *NetWare Info* tab and then click the *Restrict size* checkbox.

**5** Specify the directory size limit and click *Apply* to save your changes.

## 4.4 Purging and Salvaging Deleted NSS Files

Using NetStorage, you can purge and possibly undelete NSS files that were previously deleted if either of the following is true:

- ◆ You are user Admin and have the NCP Server component of OES installed on the Linux server.
- ◆ You have a Storage Location object set up to the directory where the deleted files or folders were.

**1** Access NetStorage and, in the left column, select the directory where the deleted files were.

**2** Click *View* and then *Show Deleted Files*.

**3** Check the boxes next to the files you want to undelete or purge.

**4** Click *File* and then either *Purge* or *Undelete*.

# Administering NetStorage

# 5

You can change your NetStorage configuration after NetStorage has been installed on a Linux server (known as the Middle Tier or XTier server) using Novell® iManager. NetStorage configuration information is stored in an XML file on the Linux server and iManager provides an easy method for changing NetStorage configuration. iManager requires Internet Explorer 5 or later.

---

**IMPORTANT:** After changing any settings, you must restart the Apache Web server. To do this, at the Linux command prompt, change to the `/etc/opt/novell/httpd/init.d/httpd` directory and enter `./httpd stop` to stop the Web server. Wait one minute and then enter `./httpdstart` to restart the Web server.

---

## 5.1 Using iManager to Administer NetStorage

- 1 Open an Internet browser and enter the URL for iManager.

The URL is `https://server_ip_address/nps/imanager.html`. Replace *server\_ip\_address* with the IP address or DNS name of the Linux server running NetStorage or the IP address for Apache-based services.

The date and time on the workstation being used to access NetStorage should be reasonably close (within a few hours) to the date and time on the server running NetStorage to avoid conflicts.

- 2 Enter your username and password.
- 3 In the left column, locate the *File Access (NetStorage)* configuration options you want to change.

iManager displays a list of links in the left column that are used to access the various pages for editing and viewing NetStorage configuration information in the XML file. For more information on each setting, click Help or see [Section 5.2, “Understanding the NetStorage Configuration Settings,”](#) on page 23.

- 4 Make the necessary configuration changes.

## 5.2 Understanding the NetStorage Configuration Settings

This section includes information on all configuration settings that can be set. The settings are organized according to the link in the left column that they appear under. This information is also available if you click Help.

Most configuration settings have a Set Defaults button. If you click the Set Defaults button, the value is set to whatever value appears in the Default Value column. If there is no value in the Default Value column, the value is set to blank (no value)

- ♦ [Authentication Domains \(page 24\)](#)
- ♦ [“Current Sessions” on page 25](#)
- ♦ [Section 5.2.3, “Files,” on page 25](#)

- ◆ “iFolder Storage Provider” on page 25
- ◆ “NetWare Storage Provider” on page 26
- ◆ Section 5.2.6, “NetStorage Options,” on page 27
- ◆ “NetStorage Statistics” on page 29
- ◆ “Resource Usage” on page 29
- ◆ Section 5.2.9, “WebDAV Provider,” on page 29
- ◆ “Storage Location” on page 29

## 5.2.1 Authentication Domains

Lets you change or add the Novell eDirectory™ server URLs and contexts that are required by NetStorage. This page also lets you add support for dotted usernames, e-mail address names, and Universal passwords, as well as giving you the option to change the eDirectory server that is designated as the Primary.

Setting	Description
Dotted Names	<p>Allows the use of a dot in a username. Some usernames contain dots (for example: john.doe). Enabling this option allows usernames containing dots to authenticate through NetStorage.</p> <p>If this option is disabled, usernames containing dots may still authenticate through NetStorage by adding a forward slash (/) in front of the dot in the username (for example: john/.doe).</p>
eMail Address Names	<p>Allows the use of the At symbol (@) in a username. Some usernames are e-mail address names and contain the At symbol character. Enabling this option allows usernames containing this character to authenticate through NetStorage. If this option is disabled, NetStorage reads the username up to the At symbol character and then tries to authenticate with that much of the name.</p>
Universal Password	<p>Enabling this option allows universal passwords to be used for NetStorage Authentication.</p> <p>Universal password functionality is disabled by default. If you have enabled universal passwords, enable this option to let users with universal passwords authenticate through NetStorage.</p> <p>If universal passwords have not been configured and enabled, selecting this option will have no effect. NetStorage will use whatever password type is configured.</p> <p>See <a href="http://www.novell.com/documentation/nmas23/index.html?page=/documentation/nmas23/admin/data/allq21t.html">Deploying Universal Passwords (http://www.novell.com/documentation/nmas23/index.html?page=/documentation/nmas23/admin/data/allq21t.html)</a> for information on configuring universal passwords.</p>
Add Domain	<p>Adds another eDirectory server IP addresses or DNS name. Users are authenticated to this eDirectory server.</p>
Make Primary	<p>Makes the eDirectory server URL listed above the button the Primary.</p>
Remove Domain	<p>Removes the eDirectory server URL from the list of URLs used by NetStorage.</p>

Setting	Description
Add Context	<p>Adds a context that NetStorage searches when authenticating users. Use periods to separate the context. For example, ou=users.o=digitalair.</p> <p>If the user is not located in the first context, any additional contexts added here are searched. If the user is not found in any context listed, an LDAP search of all subdirectories is performed.</p> <p>If clear-text passwords are not enabled on the server, this search fails.</p>
Remove Context	Removes the context (if there is one) from the eDirectory server URL.
Add Host	<p>Lets you list additional hosts for an Authentication Domain. Clicking the Add Hosts button lets you create a list of alternative hosts for the domain.</p> <p>If the Middle Tier server cannot reach the host specified in the domain, it searches the Other Hosts list specified in the Value field to find another server to use for authentication. Specify DNS names or IP addresses of alternate servers, separated by a comma delimiter, in the Value field.</p> <p>For example, you could enter a string similar to either of the following:  Middletier.boston.digitalair.com,Middletier1.boston.digitalair.com</p> <p>or</p> 111.22.33.4,111.22.33.41
Context Priority	<p>Lets you specify a priority for the context assigned to the eDirectory server URL. Adding a context priority lets you specify the order you want the different contexts searched.</p> <p>If no context priority is specified, the default priority is used, which is 0. The priority range is from 0 (lowest) to 9999999.</p>

## 5.2.2 Current Sessions

Displays a report with information on the current NetStorage sessions.

## 5.2.3 Files

Displays the NetStorage Web page. This provides a way to access NetStorage from iManager, without entering the NetStorage URL. See [Chapter 4, “Using NetStorage,” on page 19](#) for more information on the NetStorage Web page.

## 5.2.4 iFolder Storage Provider

If you have Novell iFolder 2.x<sup>®</sup> installed on your Linux server, you can view or edit the following iFolder-specific configuration settings.

Settings	Description
Root	The name of the root directory for iFolder. The root iFolder directory is a virtual directory, and changing it will change the iFolder directory name users see when accessing their files and directories on the iFolder server. The default is iFolder.

Settings	Description
Passphrase Form Protocol	This field should not be changed unless you want users' passphrases to be sent in clear text. The default is HTTPS.
iFolder Server	The DNS name and port number for the iFolder server. This setting shouldn't need to be changed unless you are changing the iFolder server your users will access.  If you click Set Defaults, the value is set to whatever value appears in the Default Value column. If there is no value in the Default Value column, the value is set to blank (no value).
Secure Port	The port number that HTTPS is running on. This setting normally does not need to be changed. The default is 443.

## 5.2.5 NetWare Storage Provider

Settings	Description
Home Name	This text is displayed on the NetStorage Web page and is followed by the tree name and path to the user's home directory. The user might have home directories in multiple trees, in which case multiple paths are displayed.  The default is Home@. You might want to change this if you want to reference home directories with a different word or in a language other than English. See the "Alternate Tree Name" listing below for more information on configuring NetStorage to display multiple home directories.
Drive Name	This text is displayed on the NetStorage Web page and will include the drive letter being referenced followed by the path to the mapped drive. The user's login script on the Primary tree is parsed by NetStorage to gather information on mapped drives.  You might want to change this if you want to use a different word or words to reference mapped drives on the NetStorage Web page. This applies to NetStorage on NetWare servers only.
Public Directory Name	This registry key provides a way for any NetStorage user to make documents or files available to other NetStorage users.  A public directory can be automatically created in each user's home directory by NetStorage. If public directories are created by NetStorage, all users in the same eDirectory context will have Read and File Scan rights to the other users' public directories.  If you don't want public directories created in users' home directories, leave this field blank (the default).  If you want public directories created in users' home directories, enter the name for the public directories. For example, if you specify My Public Files as the name for the public directories, a folder named My Public Files is created at the root of each user's home directory the first time the user logs in using NetStorage.  To access a public directory, users need to add ~username at the end of the URL used to access NetStorage. For example if you want to access the public directory for a user named jsmith, you might specify a URL similar to http://file.i-login.net/oneNet/NetStorage/~jsmith.

Settings	Description
Alternate Tree Name	<p>When a user's home directory is displayed by NetStorage, the name of the eDirectory tree is also displayed. With this configuration field, you can substitute the tree name that users see in NetStorage to something that might be more intuitive. For example, if the tree name is SERVICES 2 and you want users to see i-Login, you would type SERVICES2/i-Login in this configuration field. The eDirectory tree name and the substitute name are separated with a slash (/).</p> <p>NetStorage can access user home directories in multiple eDirectory trees. If you want to substitute eDirectory tree names in more than one tree, separate those tree name substitutions with a comma. An example of this is SERVICES2/i-Login,SERVEME2/Staging.</p>
Container Search Height	<p>Specifies the number of container levels (from where the User object is located) that NetStorage will search up in the eDirectory tree for the container login script. The default is 1, which is the same level used by Novell Client™ software.</p> <p>If you specify a number greater than the number of container levels in the eDirectory tree, NetStorage will search up to and including the root container in the tree. If you specify 0, NetStorage will only search the container where the User object is located.</p>
Home Dirs	<p>Specifies if home directories are to be processed. The default is 1, meaning that they are processed. If you specify 0, no home directories are processed or displayed to the user.</p>
Check MAP Drives	<p>Specifies if mapped drives (from login script MAP statements) are checked when the user logs in. The default is 0, meaning that mapped drives are not checked and all mapped drives are displayed to the user. If the user attempts to access a mapped drive pointing to a directory that does not exist or that the user does not have access rights to, an error occurs.</p> <p>If you specify 1, each mapped drive is checked at login and map drives that do not exist or that the user does not have access to are not displayed.</p>
Login Scripts	<p>Specifies if login scripts are to be processed. The default is 1, meaning that they are processed. If you specify 0, login scripts are not processed, and any mapped drives specified in login scripts will not be displayed to the user.</p>
Storage Locations	<p>Specifies if storage locations are to be used. The default is 1, meaning that they are used. If you specify 0, storage locations are not used, and any storage locations that have been created will not be available to users.</p>

## 5.2.6 NetStorage Options

Settings	Description
Proxy Username and Proxy Password	<p>The Admin username and password that you entered when you installed NNLS. If you want the Middle Tier Server to use a different username and password for administrator access, specify them in the fields provided.</p> <p>If you click the Set Defaults button, the value is set to whatever value appears in the Default Value column. If there is no value in the Default Value column, the value is set to blank (no value).</p>

Settings	Description
Location	<p>The registered location you want users to enter as part of the NetStorage URL to access NetStorage. The default is oneNet.</p> <p>If you change this registry setting, you must also edit the <code>etc/opt/novell/xtier/xsrv.conf</code> file and change the <code>/oneNet</code> setting in the Location section (first section) to the same setting you specified in iManager.</p>
Session Timeout	<p>The amount of time (in seconds) that the session will remain idle before it is terminated. If there is no NetStorage activity for this amount of time, the user is required to log in again to NetStorage before being allowed file access.</p>
Janitorial Interval	<p>This setting should not be changed except under direction from Novell.</p>
Persistent Cookies	<p>This setting can be turned either on or off. With the value set to 0, Persistent Cookies is turned off. Persistent Cookies is turned off (the default) if there is no value or if the value is set to 0. You can turn Persistent Cookies on by changing the value to 1.</p> <p>With Persistent Cookies turned off, the NetStorage will end when the user closes the current browser or Web folder. Also, if the user has a current instance of NetStorage running in a browser window or Web folder and starts up a new browser instance or Web folder, the user will be required to reauthenticate.</p> <p>Turning off Persistent Cookies can be beneficial if you have workstations that are shared because as long as the browser instance is closed, the next user of the workstation cannot accidentally or intentionally obtain access to your network through NetStorage.</p> <p>Leaving Persistent Cookies turned on can be beneficial if your workstations are not shared, because it prevents users from having to unnecessarily reauthenticate.</p> <p>If the user selects the Logout option in NetStorage, the session will end regardless of whether Persistent Cookies is turned on or off.</p>
LDAP Port	<p>Lets you change the LDAP port number if there is a conflict between Active Directory* and eDirectory for LDAP requests.</p> <p>This conflict exists because the back end is acting as a domain controller, which has Active Directory installed on it. The conflict is created by both eDirectory and Active Directory attempting to use the same default port (number 389). Active Directory normally wins the conflict. The Proxy User object type exists in eDirectory but not in Active Directory. Because of this, when the Middle Tier server tries to bind as a Proxy User, the bind attempt fails. This is also the reason LDAP lookups fail.</p>
Cookieless	<p>The Cookieless option can be turned either on or off. With the value set to 0, Cookieless authentication is turned off (the default). Cookieless authentication can be turned on by setting the value to 1.</p> <p>Cookieless authentication is needed for some clients that use versions of WebDav that don't support cookies. For example, Apple clients use a WebDav version that does not support cookies.</p> <p>If Cookieless Authentication is turned on, you must close all browser instances to log out.</p>

## 5.2.7 NetStorage Statistics

Displays a report with information about server up time, login failures, number of NetStorage sessions, etc.

## 5.2.8 Resource Usage

Displays a detailed report of resource utilization for NetStorage.

## 5.2.9 WebDAV Provider

Settings	Description
Moniker	The location of the NetStorage WebDAV provider (xdav.nlm). It is the location you want users to specify as part of the NetStorage URL to access NetStorage. The default is NetStorage.
Template Directory	The directory for the HTML interface. This setting should not be changed except under direction from Novell.

## 5.2.10 Storage Location

You can create a Storage Location object to display a specified name for a network directory in the NetStorage directory access list displayed through Microsoft Web Folders or a Web browser. Creating a Storage Location object is useful if users expect that the directory will have a certain name. Unlike directories that are displayed from a login script, Home directory, or iFolder that have a name that cannot be altered, you can specify the Storage Location object name.

After you have created a Storage Location object, you must associate this object with a User, Group, Location, or Container object. Users will see the directory associated with the object the next time they log in.

### Creating a Storage Location Object

- 1 Start your browser (Internet Explorer 5 or later, Mozilla, etc.) and specify the URL for iManager.

The URL is `http://server_ip_address/nps/manager.html`. Replace *server\_ip\_address* with the IP address or DNS name of the Linux server running NetStorage or the IP address for Apache-based services.

- 2 Type your username and password.
- 3 In the left column, click *File Access*, then click *New Storage Location*.
- 4 Specify the object name, display name, directory location, context, and a comment.

The object name is the name of the object in the eDirectory tree.

The display name is the name to be displayed in the NetStorage directory access list. This is the shortcut name and is seen by users. If you use the same display name for two different Storage objects, a digit is added to the names to make each name unique.

The directory location is the location of the directory on the file system. The location is a URL that includes the file system type, server name, volume, and directory path.

If the storage being accessed is on a NetWare server, the URL must be in the following format:

`ncp://server_name/volume/path_to_directory`

For example:

`ncp://server1.digitalair.com/mktg/reports`

or

`ncp://111.222.3.4/mktg/reports`

If the storage being accessed is on a Linux server, the URL must be in one of the following formats:

- ◆ `ncp://server_name/volume/path_to_directory`

This method requires that the NCP Server component of OES be installed on your Linux server.

- ◆ `cifs://server_name/cifs_share_name`

This method can be used if you have configured a CIFS or Samba share (cifs can be interchanged with smb).

- ◆ `ssh://yourserver.yourcompany.com/home/youruser`

This method allows access to files on Linux systems that don't support either NCP or CIFS (SMB) protocols.

If the file system is omitted, it is assumed that it is NCP™.

The context is the directory context that the Storage Location object resides in. Click the object selector to select the context.

The comment is entered by the administrator and is not displayed to users.

- 5 Click *Create*, then click *OK*.

## Creating or Modifying a Storage Location List

After you create a Storage Location object, you must create a list of Storage Location objects that can be used with a specified User, Group, Profile, or Container object. Users will see the directory associated with the object the next time they log in. After this list is created, you can modify it from the same window by assigning additional Storage Location objects to the list or by deleting Storage Location objects from the list.

- 1 Start your browser (Internet Explorer 5 or later, Mozilla, etc.) and specify the URL for iManager.

The URL is `https://server_ip_address/nps/imanager.html`. Replace *server\_ip\_address* with the IP address or DNS name of the Linux server running NetStorage or the IP address for Apache-based services.

- 2 Type your username and password.
- 3 In the left column, click *File Access*, then click *Assign Storage Location to Object*.
- 4 Click the *Object Selector* button; select the User, Group, Profile, or Container object that the list is to be created for; then click *OK*.
- 5 Click the *Object Selector* button, select the Storage Location objects you want included in this list, then click *OK*.

You can select multiple Storage Location objects in the Object Selector window. When you select multiple Storage Location objects, they appear in the Selected Objects list. If the list

already contains Storage Location objects and you want to add more, ensure that the original objects are still in the list before clicking *OK*.

You can remove existing storage locations by deleting their names from the list before clicking *OK*.

- 6 When you are finished creating or modifying the list, click *OK*.

### Modifying a Storage Location Object

- 1 Start your browser (Internet Explorer 5 or later, Mozilla, etc.) and specify the URL for iManager.

The URL is `https://server_ip_address/nps/manager.html`. Replace *server\_ip\_address* with the IP address or DNS name of the Linux server running NetStorage or the IP address for Apache-based services.

- 2 Type your username and password.
- 3 In the left column, click *File Access*, then click *Edit Storage Location*.
- 4 Click the *Object Selector*, then select the Storage Location object that you want to modify.
- 5 Modify the display name, display location, or comment, then click *OK*.

If you need to modify the object name or eDirectory context, you must delete this object and create a new Storage Location object.

- 6 Click *OK*.

### Deleting a Storage Location Object

- 1 Start your browser (Internet Explorer 5 or later, Mozilla, etc.) and specify the URL for iManager.

The URL is `https://server_ip_address/nps/manager.html`. Replace *server\_ip\_address* with the IP address or DNS name of the Linux server running NetStorage or the IP address for Apache-based services.

- 2 Type your username and password.
- 3 In the left column, click *File Access*, then click *Delete Storage Location*.
- 4 Click the *Object Selector* button, then select the Storage Location object that you want to delete.
- 5 Click *OK*.

## 5.3 What's Next

After you have configured NetStorage, inform users that they can access their files from the Web. Instructions for accessing files using NetStorage are available in [Chapter 4, "Using NetStorage," on page 19](#).



# Troubleshooting NetStorage

# 6

This section contains information on common troubleshooting issues. In addition to the information in this section, additional information is located in Technical Information Documents (TIDs) available in the Knowledgebase on the [Novell® Support Web site \(http://support.novell.com\)](http://support.novell.com).

## 6.1 Unexpected Results from Login Scripts

When a user authenticates to NetStorage, if NCP Server is installed, the login scripts associated with the Novell eDirectory™ User object in the primary authentication domain are processed. These login scripts are the same scripts processed by the Novell Client™.

However, because login scripts were designed to be processed by the Novell Client on the user's workstation, some of the defined statement types and script variables cannot be processed by NetStorage.

Specific information about how login scripts interact with NetStorage is available in ["Login Script Processing by NetStorage" TID10068983 \(http://support.novell.com/cgi-bin/search/searchtid.cgi?/10068983.htm\)](http://support.novell.com/cgi-bin/search/searchtid.cgi?/10068983.htm).

The maximum size of a login script is 16 KB. If the 16 KB limit is exceeded, login script drive mappings will fail.

## 6.2 Slow Login

The most common cause of a slow login to NetStorage is large or poorly configured login scripts. When a user authenticates to the Primary Authentication domain, all applicable login scripts for that User object are processed. The more commands executed, the longer the login process.

Invalid authentication domains can also slow the login process. After the user has been authenticated to the Primary Authentication domain, the same username and password is used to authenticate to any Secondary Authentication domains. Authentication failure on any of these domains will slow logins. Users can successfully authenticate to the Primary Authentication domain but fail at each of the secondary domains.

It is helpful to determine if slow logins are global (all users) or specific to a given user object. If all users are affected, it is more likely to be a problem with the XTier authentication domain configuration. If a single user or groups of users are affected, check all login scripts that apply to that user or group. A problem with a context's login script can affect a large number of users. Mapping out which scripts apply to which users can help narrow the problem.

For more information, see ["Login Script Processing by NetStorage" TID10068983 \(http://support.novell.com/cgi-bin/search/searchtid.cgi?/10068983.htm\)](http://support.novell.com/cgi-bin/search/searchtid.cgi?/10068983.htm).

## 6.3 Configuring LDAP Contextless Login for Use with NetStorage

When configuring LDAP contextless login, consider the following issues.

**Primary Authentication Domain:** The user must be authenticated to the Primary Authentication domain (an eDirectory server with a replica). You can provide more than one context in the Primary Authentication domain resulting in each context being searched for the presence of the user. The search is performed using an LDAP search of the configured contexts.

**Secondary Authentication Domain:** After the user has been authenticated to the Primary Authentication domain, the same username and password is used to authenticate to any Secondary Authentication domains. The search is performed using an LDAP search of the configured contexts for that domain. If authentication to any Secondary domains is unsuccessful, the user is still authenticated to the Primary Authentication domain. Authentication failure on a Secondary domain can cause a delay in the login process and is one of the most common causes of slow logins to NetStorage.

**Enable TLS for Simple Binds with Passwords:** Passwords are encrypted in eDirectory, so you must enable TLS for simple binds with passwords in LDAP. For more information, see “[Requiring TLS for Simple Binds with Passwords](#)” in the *Novell eDirectory 8.7.3 Administration Guide*.

LDAP will need Read and Browse rights to the entire tree. By default, when a user performs an anonymous bind (doesn't specify a password), a special object in the directory calculates access control for that user. This object is termed [Public]. By default, this object can browse the entire tree hierarchy and read a limited number of attributes on entries.

If you want to have an anonymous bind to use a different object in the tree, you can specify that object in the Proxy Username field. By doing this, you can restrict the types of objects and attributes that anonymous users can access by setting the appropriate access controls on the proxy User object. The proxy username must be a distinguished name. To easily select an object, click the directory browser button to the right of the text field on the LDAP Group Object. A dialog box appears that allows you to choose an object in the tree. Any eDirectory User object can be used and anonymous access will assume the rights of that user.

---

**IMPORTANT:** A proxy user must have a blank password in order to work correctly. This is very different from having no password. If any user has no password, then they do not have a public/private key pair to compare against when attempting login. A blank password will generate a public/private key pair, although the actual string for the password is empty.

---

## 6.4 Novell iFolder 2.x and NetStorage

When troubleshooting a NetStorage and Novell iFolder<sup>®</sup> issue, it is important to first determine if it is a NetStorage problem or an iFolder problem. It is easy to spend a great deal of time working the problem from the NetStorage end only to find that the user cannot access iFolder directly. A few simple tips can help speed the identification of the problem.

---

**IMPORTANT:** It is not currently possible to access iFolder 3.x using NetStorage.

---

- Take NetStorage out of the equation. Make sure the User can successfully log in to iFolder with the iFolder client or applet. If login is unsuccessful, the problem is with iFolder and should be addressed there. If the user successfully logs in to iFolder, begin troubleshooting the NetStorage application.
- Enable debugging for the iFolder Storage Provider. In iManager, click iFolder Storage Provider and change the Debug Level from 0 (default) to FFFFFFFF, and then restart the server. Log in

to NetStorage and attempt to access iFolder. The server logger screen will now display all warnings and errors related to the iFolder Provider.

- ❑ Create a new user for testing. Some problems are user-specific and some problems affect all users. Creating a test user can help to determine this. When creating a test user for troubleshooting, login scripts and home directories are not needed.

## 6.5 Configuring NetStorage to Use the Proper Code Page or Character Set

NetStorage can be configured to use different languages and characters by changing the character set or code page on your Linux server. Character set or character map is the Linux equivalent of the code page in NetWare®. The default character set for NetStorage is the same as the character set Root is configured to use. This character set is determined during the Virtual Office installation.

You can determine the character set that Root is configured to use by entering `locale charmap` at the Linux server console. Character sets for different users are configured by setting the `LC_*` environment variables.

If the character set that Root is configured to use is not the same as the one that NetStorage is configured to use, you must configure NetStorage to use a different character set. To do this, editing the `/etc/opt/novell/xtier/xsrvd/envvars` file and modify the `XTIER_CODE_PAGE` environment variable.

As a general rule, NetStorage should use the same code page as the servers hosting storage that NetStorage will access. For example, if NetStorage is being used to access storage on NetWare servers that are configured to use the 437 code page, then you should set the `XTIER_CODE_PAGE` environment variable to 437.

You can determine which character sets are installed and available on your Linux server by entering `iconv --list` at the server console.

Character set names may not be exactly the same between NetWare and Linux servers. For example, the 1254 NetWare code page maps to the WINDOWS-1254 Linux character set.

## 6.6 Configuring NetStorage with iChain

If you are configuring NetStorage to run behind an iChain server (fronting NetStorage with iChain), there are some configuration changes required in order for NetStorage to function properly. These configuration changes include enabling cookieless authentication and editing the `logout.html.utf8` file.

### 6.6.1 Enabling Cookieless Authentication

To enable cookieless authentication

- 1 Start your browser (Internet Explorer 5 or later, Mozilla, etc.) and specify the URL for iManager.

The URL is `http://server_ip_address/nps/imanager.html`. Replace `server_ip_address` with the IP address or DNS name of the Linux server running NetStorage or the IP address for Apache-based services.

- 2 Enter your username and password.

**3** In the left column, click *File Access*, then click *NetStorage Options*.

**4** Set the value for the Cookieless option to 1.

The Cookieless option can be turned either on or off. With the value set to 0, Cookieless authentication is turned off (the default). Cookieless authentication can be turned on by setting the value to 1.

If Cookieless Authentication is turned on, you must close all browser instances to logout.

## 6.6.2 Editing the Logout.html.utf8 file

The logout.html.utf8 file is located in the /opt/novell/nestorage/webapp directory on the Linux server where NetStorage is installed. Edit the file and replace <iChainDNS> with the DNS name of the iChain server. To enable iChain logout, some lines must be uncommented and others must be removed. There are instructions in the file on which lines to remove and uncomment.

## 6.7 Accessing CIFS or SSH Storage Locations

If you experience problems accessing CIFS (SMB) or SSH storage locations, the problem may be related to CIFS or SSH, and not NetStorage. Try logging in using a different client to determine if a CIFS or SSH problem exists.

## 6.8 LUM Must Have SSHD Access Enabled

If you want to access local files or files on another server in the same eDirectory tree using the SSH file access method, you must leave the SSHD check box checked during the OES installation. The check box is in the Linux User Management configuration section on the OES installation.

The check box is checked by default. If you uncheck the SSHD check box during the OES installation, users won't be able to login through SSH and will not be able to access files using that method. The SSHD check box must remain checked during the OES installation. Unchecking the check box and then checking it after the installation will not resolve this issue.

# Documentation Updates

# A

This *NetStorage Administration Guide for Linux* has been updated with the following information on November 1, 2005:

## A.1 November 1, 2005 (Open Enterprise Server SP2)

Location	Change
Entire guide.	Page design reformatted to comply with revised Novell® documentation standards.