

OpenText Retain CE 23.4

Installation and Upgrade

October 2023

Legal Notice

Copyright 2023 Open Text

The only warranties for products and services of Open Text and its affiliates and licensors ("Open Text") are as may be set forth in the express warranty statements accompanying such products and services. Nothing herein should be construed as constituting an additional warranty. Open Text shall not be liable for technical or editorial errors or omissions contained herein. The information contained herein is subject to change without notice.

Contents

Preface	7
About Retain	7
About This Guide	7
For Documentation Feedback	7
To Join the Retain Idea Exchange	7
For Additional Documentation	7
To Contact Technical Support	7
For Sales	7
For Professional Services	7
1 Installing Retain 23.4	9
Retain Deployment Checklist	9
Installing a Web Server	10
Linux Web Server	10
Windows Web Server	10
(Optional) Apache Install on Windows	11
Creating and Maintaining an SQL Database	11
The Database Is Your Responsibility	11
The Database's Role in Retain	12
Never Use NFS Shares in a Database System	12
If You Need a Secure Database Connection	12
Basic Setup Overview	12
Example Instructions for Your Reference	13
Installing a Retain Server on Linux	21
Retain Prerequisites for Linux Servers	22
Downloading and Preparing the Retain Installation Files on Linux	22
Installing the Retain Server	22
Installing a Retain Server on Windows	24
Downloading and Preparing the Retain Windows Installation Source Files	24
Prerequisites	24
Retain Install	25
Running the Retain Server Configuration Wizard	34
Retain's Browser-based Management Tool	38
Logging In as an Administrator	38
Retain Server Administrative Console	39
Always Remember to Save Changes	40
Notifications	40
Licensing	41
About Retain Licenses	41
The Licensing Page	41
Installing Your Retain Licenses	42
Backing Up Retain	43
Where Data Is Stored In Retain	44
Backing Up Retain	45
General Maintenance	47
Un-installing Retain	48
Linux	48

Windows.....	48
Installing Other Retain Components on Linux	49
Deploying Production-Use Worker Agents on Linux.....	49
Installing a Retain Message Router on Linux.....	50
Installing Other Retain Components on Windows.....	51
Installing Additional Retain Workers on Windows	51
Installing a Retain Message Router on Windows	53
Starting and Stopping the Retain Server	53
Windows.....	53
Linux	54
2 Upgrading to Retain 23.4	55
Preparing to Upgrade to 23.4.....	56
Prerequisites for Upgrading to 23.4.....	56
Installing Java on a Server with no Internet Connection	56
Upgrading from 23.2 or later to 23.4.....	58
Preparing to Upgrade to 23.4.....	58
Upgrading to 23.4 (SLES).....	58
Upgrading to 23.4 (Windows).....	59
Updating to the Solr 9 Indexing Engine	61
Upgrading from 4.11 to 23.4	64
Preparing to Upgrade to 23.4.....	64
Upgrading to 23.4 (SLES).....	64
Upgrading to 23.4 (Windows).....	65
3 Moving Retain to a New Server	67
Moving Retain from Windows to Linux.....	67
Overview	67
Preparation.....	68
Moving Retain	68
Moving Retain from Linux to Windows.....	71
Overview	71
Preparation.....	72
Moving Retain	73
Moving Retain to a Different Windows Server	74
Overview	74
Preparation.....	75
Moving Retain	76
Moving Retain to a Different Linux Server	77
Overview	77
Preparation.....	78
Move the MySQL Database".....	79
4 Moving a MySQL Database to Another Server	83
Linux to Linux.....	83
Linux or Windows to Windows	84
5 Upgrading MySQL to a New Version	87
Upgrading MySQL on Linux	87

Upgrading MySQL on Windows	88
----------------------------------	----

Preface

About Retain

Retain Unified Archiving

- ♦ Archives email and text messages.
- ♦ Catalogs them for search and retrieval.

Retain is not a backup/restore system.

About This Guide

This is the installation and upgrade documentation for Retain Unified Archiving version 23.4.

For Documentation Feedback

Scroll to the bottom of the online page and enter a User Comment.

To Join the Retain Idea Exchange

Got an idea for a new Retain feature or enhancement? [Log in to official website](#) and join the conversations happening inside the [Retain Idea Exchange](#).

For Additional Documentation

See the [OpenText Knowledge Base](#) website.

To Contact Technical Support

Browse to the [OpenText Support Page](#) and begin typing *Retain Unified Archiving* in the **Search for a Product** field.

For Sales

Go to the [OpenText Contact page](#).

For Professional Services

Contact OpenText Professional Services by sending an email to sales@microfocus.com or calling (877) 772-4450.

1 Installing Retain 23.4

- ♦ [“Retain Deployment Checklist” on page 9](#)
- ♦ [“Installing a Web Server” on page 10](#)
- ♦ [“Creating and Maintaining an SQL Database” on page 11](#)
- ♦ [“Installing a Retain Server on Linux” on page 21](#)
- ♦ [“Installing a Retain Server on Windows” on page 24](#)
- ♦ [“Running the Retain Server Configuration Wizard” on page 34](#)
- ♦ [“Retain’s Browser-based Management Tool” on page 38](#)
- ♦ [“Licensing” on page 41](#)
- ♦ [“Backing Up Retain” on page 43](#)
- ♦ [“General Maintenance” on page 47](#)
- ♦ [“Un-installing Retain” on page 48](#)
- ♦ [“Installing Other Retain Components on Linux” on page 49](#)
- ♦ [“Installing Other Retain Components on Windows” on page 51](#)
- ♦ [“Starting and Stopping the Retain Server” on page 53](#)

Retain Deployment Checklist

For a successful Retain deployment, complete the following tasks in the order listed, choosing those that apply to your deployment.

1. Get a copy of your company’s retention policy and follow it as you work through the [“Retain Planning and Design Best Practices”](#) in *OpenText Retain CE 23.4: Planning*.
2. Identify Retain admin credentials you plan to use.
3. Gather and document the SMTP host connection information.
4. Install a web server. See [“Installing a Web Server” on page 10](#)
5. Gather the database connection information, DNS name or IP address, Retain database name, retain database user name and password.
6. Create a database for Retain to use. See [“Creating and Maintaining an SQL Database” on page 11](#)
7. Download and install Retain on your chosen platform:
 - ♦ **Linux:** [“Installing a Retain Server on Linux” on page 21](#)
 - ♦ **Windows:** [“Installing a Retain Server on Windows” on page 24](#)
8. If desired, set custom storage paths. See [“Setting Custom Storage Path Rights on Linux”](#) in *OpenText Retain CE 23.4: Planning*.
9. Configure the Retain server. [“Running the Retain Server Configuration Wizard” on page 34](#).

10. Install the production Retain Worker Agents.
 - ♦ **Linux:** [“Deploying Production-Use Worker Agents on Linux”](#) on page 49
 - ♦ **Windows:** [“Installing Additional Retain Workers on Windows”](#) on page 51
11. If archiving mobile devices, install the Retain Router. [“Installing a Retain Message Router on Linux”](#) on page 50 or [“Installing a Retain Message Router on Windows”](#) on page 53
12. Access Retain’s management interface. [“Logging In as an Administrator”](#) on page 38
13. Configure Reporting and Monitoring. See [“Configuring the R&M Server”](#) in *OpenText Retain CE 23.4 : Configuration and Administration*.
14. Create and configure jobs for the systems you are archiving.
15. Configure the Reports you need. See [“Retain’s Reports”](#) in *OpenText Retain CE 23.4 : Configuration and Administration*.
16. Confirm that data is being archived. See [“Using Retain’s Archives”](#) in *OpenText Retain CE 23.4: User Guide*.
17. Upload the required licenses. [“Licensing”](#) on page 41
18. Set up the Tools your deployment needs. See [“Tools Overview”](#) in *OpenText Retain CE 23.4: User Guide*.

Installing a Web Server

Retain requires a web server on each server running a Retain component (Server, Worker, etc.).

Linux Web Server

- 1 Install the Apache Web Server distributed with your SLES server.
- 2 Make sure you also select and install the following Apache components:
 - ♦ *apache2-mod_jk* - Connectors between Apache and Tomcat Servlet Container
 - ♦ *apache2-prefork* - Apache 2 "prefork" MPM (Multi-Processing Module)
 - ♦ *apache2-worker* - Apache 2 worker MPM (Multi-Processing Module)

Windows Web Server

NOTE: OpenText recommends using IIS on Windows, but Apache can be used if necessary. See the Apache web site for installation instructions.

If you must use Apache instead of IIS, skip to [“\(Optional\) Apache Install on Windows”](#) on page 11. Otherwise, continue with this section.

- 1 If you are using IIS and it is not already installed, install it now along with the ISAPI Extensions and Filters.

The ISAPI Extensions and Filters allow Retain to gather and manipulate information about Internet traffic on the system.

- 2 If your system has IIS installed and running without the ISAPI components, do the following:
 - 2a Open the Server Manager.
 - 2b In Server Manager, click the **Manage** menu, then click **Add Roles and Features**.
 - 2c In the Add Roles and Features wizard, click **Next**.
 - 2d Select the installation type and click **Next**.
 - 2e Select the destination server and click **Next**.
 - 2f On the Server Roles page, expand **Web Server (IIS)**, expand **Web Server**, expand **Application Development**, and then select **ISAPI Filters** and **ISAPI Extensions**.
 - 2g Click **Next**.
 - 2h On the Select Features page, click **Next**.
 - 2i On the Confirm Installation Selections page, click **Install**.
 - 2j On the Results page, click **Close**.

(Optional) Apache Install on Windows

If you need to use Apache instead of IIS, do the following:

1. Download the 2.4 binary for Windows from apache.org.

IMPORTANT: Retain only supports version 2.4.

2. Install normally, accepting all of the defaults.

Creating and Maintaining an SQL Database

- ♦ [“The Database Is Your Responsibility” on page 11](#)
- ♦ [“The Database’s Role in Retain” on page 12](#)
- ♦ [“Never Use NFS Shares in a Database System.” on page 12](#)
- ♦ [“If You Need a Secure Database Connection” on page 12](#)
- ♦ [“Basic Setup Overview” on page 12](#)
- ♦ [“Example Instructions for Your Reference” on page 13](#)

The Database Is Your Responsibility

IMPORTANT: Your organization is entirely responsible for the Retain database.

OpenText strongly recommends that it be installed, configured, tuned, and maintained on one of the supported database platforms by qualified database administrators. See [“SQL Database” in *OpenText Retain CE 23.4: Planning*](#).

Providing adequate instructions for the above tasks on the various Retain-supported database platforms is well beyond the scope of this guide.

The setup and configuration instructions in [“Example Instructions for Your Reference”](#) on page 13 are only for proof-of-concept deployment use.

The Database’s Role in Retain

Retain stores header data and pointers to the Retain datastore in an SQL database.

Retain administrators are responsible to ensure that Retain databases are properly installed, configured, tuned, and maintained.

Never Use NFS Shares in a Database System.

NFS locking is insufficient for database requirements and results in corruption.

If You Need a Secure Database Connection

You can secure the connection between Retain and all the supported database types (MariaDB, MySQL, Oracle, PostgreSQL, and MSSQL). See [“Securing the Database Connection”](#) in the *OpenText Retain CE 23.4: Planning* guide. For configuring SSL on your database, refer to the sections on the Vendor document where the SSL configuration details are provided for each database type.

Basic Setup Overview

Setting up the Retain database involves the following general steps:

1. Download a supported database platform. See [“SQL Database”](#) in *OpenText Retain CE 23.4: Planning*.
2. Install it on one of the following, according to your organization’s needs:
 - ♦ A dedicated database server (recommended).
 - ♦ The Retain server itself for a small, all-in-one deployment.
3. Create a database for Retain to use.
4. Create a user/role with ownership rights to the database that you just created.

IMPORTANT: Deploying Retain requires that you provide:

- ♦ The database name
 - ♦ The database user’s/role’s name
 - ♦ The user’s/role’s password
-

Example Instructions for Your Reference

The following sections contain sample instructions and tips that might be useful if you are setting up a proof-of-concept Retain deployment.

They are not adequate for deploying Retain in a production environment, which requires assistance from a qualified database administrator.

- ♦ [“MySQL” on page 13](#)
- ♦ [“MS SQL Server 2022, 2019, 2017, and 2016” on page 14](#)
- ♦ [“ORACLE” on page 15](#)
- ♦ [“Postgres 10.9” on page 17](#)
- ♦ [“MariaDB 10.x and 11.1.2” on page 17](#)
- ♦ [“Further Database Tuning” on page 18](#)

MySQL

1. Download and install the latest MySQL server and client and configure according to local system needs.
 - a. Install the server: `rpm -ivh MySQL-server-version.sles11.x86_64.rpm`
 - b. install the client: `rpm -ivh MySQL-client-version.sles11.x86_64.rpm`
 - c. Modify `/usr/my.cnf`, to move the database to a data volume, by adding the line `datadir=/path/to/where/you/want/the/MySQL/data`
 - d. Find the root password in `/root/.mysql_secret`
`cat /root/.mysql_secret`
 - e. Start MySQL:
`rcmysql start`
 - f. Change the root password:
`/usr/bin/mysql_secure_installation`
2. Log in to MySQL using the client:
`mysql -u root -p`
3. Create the database: * This is critical. Not storing the database in UTF-8 format guarantees irreparable corruption for non-US-ASCII characters. *
`CREATE DATABASE retain DEFAULT CHARACTER SET utf8mb4 DEFAULT COLLATE utf8mb4_unicode_ci;`
 - a. If you make a mistake, enter this command:
`DROP DATABASE retain;`
 - b. Then repeat step 3 to create the database.
4. This step depends on which version of MySQL you are using.
 - ♦ **For MySQL 5.x:** Retain needs to be configured with a user account that you grant full rights to the Retain database.

IMPORTANT: OpenText strongly recommends against using the ‘root’ account.

While logged in to MySQL, enter the following commands, replacing *UserName* and *Password* with the desired user name and password.

- ♦ `GRANT ALL PRIVILEGES ON retain.* TO 'UserName'@'%' IDENTIFIED BY 'Password';`

To restrict the connection to a specific IP address, replace the percentage sign (%) with the address.

- ♦ `GRANT ALL PRIVILEGES ON retain.* TO 'UserName'@'localhost' IDENTIFIED BY 'Password';`

For example, if the database user's name is `retainuser`, the password is `P@ssword1`, and you want database access restricted to `192.168.1.142`:

- ♦ `GRANT ALL PRIVILEGES ON retain.* TO 'retainuser'@'192.168.1.142' IDENTIFIED BY 'P@ssword1';`
- ♦ `GRANT ALL PRIVILEGES ON retain.* TO 'retainuser'@'localhost' IDENTIFIED BY 'P@ssword1';`

- ♦ **For MySQL 8.x:** You need to create the user account and then grant it full rights to the Retain database.

While logged in to MySQL, enter the following commands, replacing *UserName* and *Password* with the desired user name and password.

- ♦ `CREATE USER 'UserName' IDENTIFIED WITH mysql_native_password BY 'Password';`
- ♦ `CREATE USER 'UserName'@'localhost' IDENTIFIED WITH mysql_native_password BY 'Password';`
- ♦ `GRANT ALL PRIVILEGES ON retain.* TO 'UserName'@'localhost';`
- ♦ `GRANT ALL PRIVILEGES ON retain.* TO 'UserName'@'%';`

If you run the mysql-database on the same server as the Retain-Server you can add the following option to your `my.cnf`-configuration:

```
[mysqld]
```

```
default-authentication-plugin=mysql_native_password
```

MS SQL Server 2022, 2019, 2017, and 2016

1. Install as a default instance, with *Latin1_General_CI_AS* as the encoding standard.
2. Enable **SQL Server Authentication** in addition to **Windows Authentication**.
3. Once installed, verify the server is listening on port 1433. At the command prompt, run:

```
telnet <IP address> 1433
```
4. Ensure TCP/IP is enabled - Run SQL Server Configuration Manager
5. Expand **SQL Server Network Configuration**
6. Protocols for MSSQLSERVER
7. Enable TCP/IP
8. Run SQL Server Management Studio, connect to the Server.
9. Under Security/Logins, right-click and select **create Login, (for example Retainuser) that uses SQL Server authentication**.

10. Assign a password.
11. Right click **Databases**, create a new database named Retain and assign Retainuser as the owner.

ORACLE

Retain supports the usage of Oracle databases on all platforms. (For more information, see “[Database Platforms](#)” in the *OpenText Retain CE 23.4: Planning* guide.)

However, it is the customer’s responsibility to employ an experienced Oracle DBA to install, maintain, and tune Oracle.

The instructions below serve as a guideline, but may result in poorly performing, insecure environments.

Oracle Installation instructions vary widely depending on the version, OS, storage configuration, clustering, and so on. There is no one-size-fits-all.

This is also true of other SQL Server products, but especially for Oracle, which is why relying on a DBA is so critical.

Using Oracle with Retain requires the following tasks:

- ♦ “[Installing the Oracle Server](#)” on page 15
- ♦ “[Setting Up a TCPIP Listener](#)” on page 15
- ♦ “[Creating a Database Named Retain](#)” on page 15
- ♦ “[Creating a User Account to Access the Retain Database](#)” on page 16
- ♦ “[Tuning Oracle](#)” on page 17

Installing the Oracle Server

Install your Oracle Server normally, according to your standards and practices. One option is to use the Universal Installer, specifying a custom installation, choose the type of Oracle Server to install, and to Install Files Only

Setting Up a TCPIP Listener

Next use the Net Configuration Assistant (or manually edit the Oracle Listener configuration) to create a TCP based listener on port 1521. This allows TCPIP clients to connect to Oracle and is required for Retain.

Creating a Database Named Retain

Next, either use the Database Configuration Assistant or manually create the database with your favorite tool. Regardless, you want to create a database and `sid`, named Retain, and create your SYSTEM account

An example of a create statement (do not use as is):

```

connect "SYS"/"&&sysPassword" as SYSDBA
set echo on
spool C:\oracle\product\10.2.0\admin\Retain\scripts\CreateDB.log
startup nomount
pfile="C:\oracle\product\10.2.0\admin\Retain\scripts\init.ora";
CREATE DATABASE "Retain"
MAXINSTANCES 8
MAXLOGHISTORY 1
MAXLOGFILES 16
MAXLOGMEMBERS 3
MAXDATAFILES 100
DATAFILE 'C:\oracle\product\10.2.0\oradata\Retain\system01.dbf' SIZE 300M
REUSE AUTOEXTEND ON NEXT 10240K MAXSIZE UNLIMITED
EXTENT MANAGEMENT LOCAL
SYSAUX DATAFILE 'C:\oracle\product\10.2.0\oradata\Retain\sysaux01.dbf'
SIZE 120M REUSE AUTOEXTEND ON NEXT 10240K MAXSIZE UNLIMITED
SMALLFILE DEFAULT TEMPORARY TABLESPACE TEMP TEMPFILE
'C:\oracle\product\10.2.0\oradata\Retain\temp01.dbf' SIZE 20M REUSE
AUTOEXTEND ON NEXT 640K MAXSIZE UNLIMITED
SMALLFILE UNDO TABLESPACE "UNDOTBS1" DATAFILE
'C:\oracle\product\10.2.0\oradata\Retain\undotbs01.dbf' SIZE 200M REUSE
AUTOEXTEND ON NEXT 5120K MAXSIZE UNLIMITED
CHARACTER SET AL32UTF8
NATIONAL CHARACTER SET AL16UTF16
LOGFILE GROUP 1 ('C:\oracle\product\10.2.0\oradata\Retain\redo01.log')
SIZE 51200K,
GROUP 2 ('C:\oracle\product\10.2.0\oradata\Retain\redo02.log') SIZE
51200K,
GROUP 3 ('C:\oracle\product\10.2.0\oradata\Retain\redo03.log') SIZE 51200K
USER SYS IDENTIFIED BY "&&sysPassword" USER SYSTEM IDENTIFIED BY
"&&systemPassword";
spool off

```

The most critical items to note are the CHARACTER SET (AL32UTF8 aka UTF8), and the NATIONAL CHARACTER SET (AL16UTF16). If using a GUI based installed, make sure that you set these because they are easily missed. (They are located on the Encoding tab of the 10th step or so in the wizard).

Creating a User Account to Access the Retain Database

Finally, using the SYSTEM account, connect to the database, create a user, and grant full system privileges to the account. An example is shown below:

```
CREATE USER user-name IDENTIFIED BY password;
```

```
grant dba to user-name;
```

Restart everything, and verify you can telnet on the TCP LISTENER's PORT (1521 if as above).

If a restricted user is desired, Retain requires a user with the following role:

- ♦ RESOURCE CONNECT

And the following database privileges to the Retain database:

- ♦ CREATE PROCEDURE
- ♦ CREATE SESSION

- ♦ CREATE SYNONYM
- ♦ CREATE TABLE
- ♦ CREATE TYPE
- ♦ CREATE VIEW

Tuning Oracle

Tuning Oracle is well beyond the scope of this manual and requires Oracle's online guides, as well as an experienced DBA or extensive training.

Postgres 10.9

When creating a PostgreSQL database for use by Retain, specify **UTF8 encoding**.

If the Retain Server is on a different machine, you must configure PostgreSQL to accept connections from that machine's IP address.

1. Connect to PostgreSQL using its psql utility.
2. Create a new database and user for use by Retain. The example below creates a user named "retainuser":

```
CREATE DATABASE retain WITH OWNER = retainuser ENCODING = 'UTF8' TABLESPACE = pg_default
CONNECTION LIMIT = -1;
```

MariaDB 10.x and 11.1.2

You install MariaDB using YaST.

Log into MariaDB, and set up the Retain database and user.

1. Create the database: * This is critical. Not storing the database in UTF-8 format guarantees irreparable corruption for non-US-ASCII characters. *

```
CREATE DATABASE retain DEFAULT CHARACTER SET utf8mb4 DEFAULT COLLATE
utf8mb4_unicode_ci;
```

- a. If you make a mistake, enter this command:

```
DROP DATABASE retain;
```

- b. The repeat this step to create the database.

2. Retain needs a user account created that has full rights to the Retain database.

IMPORTANT: OpenText strongly recommends against using the 'root' account.

While logged in to MariaDB, enter the following commands, replacing *UserName* and *Password* with the desired user name and password

Both commands are needed. The '%' is a wildcard. If you want to restrict the connection to a specific IP address, specify the address instead of the '%' sign.):

```
GRANT ALL PRIVILEGES ON retain.* TO 'UserName'@'%' IDENTIFIED BY
'Password' ;
```

```
GRANT ALL PRIVILEGES ON retain.* TO 'UserName'@'localhost' IDENTIFIED  
BY 'Password';
```

For example, if the database user's name is "retainuser" and the password is "P@ssword1":

```
GRANT ALL PRIVILEGES ON retain.* TO 'retainuser'@'%' IDENTIFIED BY  
'P@ssword1';
```

```
GRANT ALL PRIVILEGES ON retain.* TO 'retainuser'@'localhost' IDENTIFIED  
BY 'P@ssword1';
```

Further Database Tuning

You are responsible to tune the SQL Database Server. Tuning database servers for performance often requires an experienced DBA.

You are also responsible for backing up, managing storage, and ensure that the database is fault tolerant.

MySQL

You should periodically optimize the Retain tables in order to achieve optimum query and update performance. This can have a big impact on the performance of archive jobs, deletion jobs, etc. It is also a good idea to optimize the memory settings for MySQL.

Backing Up the Database

Be sure to [back up \(dump\) the database](https://support.microfocus.com/kb/doc.php?id=7019083) (<https://support.microfocus.com/kb/doc.php?id=7019083>) before performing any maintenance. If on a VM, you can alternatively back up the VM or take a snapshot.

Optimizing Tables

WARNING: This should be done during a maintenance window because it locks the tables and can take hours to complete (or days for larger databases).

The time required is a function of the number of records in the tables, the power of the underlying hardware, and the RAM available. The more `innodb_buffer_pool_size` you can give to MySQL, the more tablespace it can load into RAM [as explained here](https://dev.mysql.com/doc/refman/5.5/en/glossary.html#glos_buffer_pool) (https://dev.mysql.com/doc/refman/5.5/en/glossary.html#glos_buffer_pool).

Like hard disks, database tables' indexes can become fragmented resulting in poor performance. Optimizing tables can dramatically improve archive job and deletion job performance.

At the command prompt, type: `mysqlcheck -o -u root -p retain`

- ♦ "-o" instructs it to optimize all tables in the database.
- ♦ "-u root" specifies the user "root".
- ♦ "-p" causes it to prompt for the retain database password.
- ♦ "retain" instructs it to run against the "retain" database (or whatever you named it during installation - "retain" is the default).

The command above optimizes all Retain tables at once. However, many are static and would not necessarily be subject to fragmentation issues.

Paste the following query into the MySQL prompt after logging into MySQL. This optimizes the tables one at a time.

These are the Retain tables you might consider optimizing:

```
OPTIMIZE TABLE retain.Audit;  
OPTIMIZE TABLE retain.s_AddressBookCache;  
OPTIMIZE TABLE retain.t_abook;  
OPTIMIZE TABLE retain.t_document;  
OPTIMIZE TABLE retain.t_dsref;  
OPTIMIZE TABLE retain.t_message;  
OPTIMIZE TABLE retain.t_message_attachments;  
OPTIMIZE TABLE retain.t_message_properties;  
OPTIMIZE TABLE retain.t_message_recipients;  
OPTIMIZE TABLE retain.t_recipient;
```

You can check on the progress of the queries by opening a separate terminal window and launching the following command:

```
watch -n 1 "mysqladmin -u root -p[password] processlist"
```

(note: no space between "-p" and your mysql root user password!)

NOTE: Retain uses the InnoDB engine in MySQL, which does not support the optimize option; however, running this option automatically performs a re-create action on the tables, which eliminates the fragmentation. There might be better ways to accomplish this, so this information is supplied to point you in the right direction.

For more detailed information and other mysqlcheck options, you may want to research this on the Internet. For your convenience, here are a couple of helpful articles:

[4.5.3. mysqlcheck - A Table Maintenance Program \(http://dev.mysql.com/doc/refman/5.0/en/mysqlcheck.html#option_mysqlcheck_analyze\)](http://dev.mysql.com/doc/refman/5.0/en/mysqlcheck.html#option_mysqlcheck_analyze)

[MySQL Back to Basics: Analyze, Check, Optimize, and Repair \(http://www.pythian.com/blog/mysql-back-to-basics-analyze-check-optimize-and-repair/\)](http://www.pythian.com/blog/mysql-back-to-basics-analyze-check-optimize-and-repair/) (written in 2008)

[MySQL Reference Manual on getting a dump of a corrupted database \(http://dev.mysql.com/doc/refman/5.5/en/forcing-innodb-recovery.html\)](http://dev.mysql.com/doc/refman/5.5/en/forcing-innodb-recovery.html) This is sometimes the only option for recovering data from a corrupted INNODB database.

Memory Optimization

Memory for your InnoDB can be configured in `/etc/my.cnf` (Linux) or on Windows, in the `[drive]:\Program Files\MySQL\MySQL Server 5.x\my.ini` file (where "x" is the MySQL version).

You'll find the following section in your `my.cnf` and there are identical lines in the `my.ini` on Windows although they may not be in this same order. The settings you may want to consider modifying are in red. This is followed by indented explanations in blue and are additional comments made for this article - those additional comments are not found in the `my.cnf` or `my.ini`.

Be sure to stop tomcat "[Starting and Stopping the Retain Server](#)" on page 53 before working with MySQL.

```
# Uncomment the following if you are using InnoDB tables. If it does not exist, create it.
innodb_file_per_table
```

The "innodb_file_per_table" is not included in the default my.cnf or my.ini and has to be typed in manually. It causes MySQL to create an .idx file for every table in the database. The benefits of this is up for debate. Some swear by it because they feel it eliminates contention for a single file containing all the tables (ibdata1); however, others have written that it is fast at first and then bogs down. We have found that, for Retain databases, it seems to positively impact performance. Do your own research and determine what is best for your system.

```
#innodb_data_home_dir = /var/lib/mysql
#innodb_data_file_path = ibdata1:10M:autoextend
#innodb_log_group_home_dir = /var/lib/mysql
# You can set ..buffer_pool_size up to 50 - 80 %
# of RAM but beware of setting memory usage too high
innodb_buffer_pool_size = 4G
```

This allocates [buffer memory for MySQL \(https://dev.mysql.com/doc/refman/5.5/en/glossary.html#glos_buffer_pool\)](https://dev.mysql.com/doc/refman/5.5/en/glossary.html#glos_buffer_pool) into which it can load table and index data. Obviously, accessing RAM is faster than disk, so the more memory you can give for the buffer pool, the more MySQL can load into the buffer. MySQL uses memory for other things, so if you have 6G to play with, you probably do not want the buffer pool to be larger than 4G. You'll have to experiment on your own system.

A helpful tool that is free is called `mysqltuner.pl`. It is a perl script that runs against your database to help you tune it's memory, security, etc. To get it, create a directory on your Linux server and change to that directory. Then type: `wget mysqltuner.pl`. Once it is down downloading (takes 1 second), type: `chmod +x *.pl` so that it can be executed; then, execute it by typing: `./mysqltuner.pl`.

```
innodb_additional_mem_pool_size = 204M
```

From what we've seen, this should be set to 5% of the buffer pool size. But, again, do your research.

```
# Set ..log_file_size to 25 % of buffer pool size
innodb_log_file_size = 1024M
```

This affects the `ib_logfile0` and `ib_logfile1` files in your MySQL data directory. These files hold statements/transactions. The maximum size these can be set to (regardless of your buffer pool size) is 1024M (or 1G, totaling 2 GB for all log files together) for MySQL 5.5 and 255 G (total for all log files together can be up to 512 GB) for 5.6. For more information check out the MySQL website [here \(http://dev.mysql.com/doc/refman/5.6/en/innodb-parameters.html#sysvar_innodb_log_file_size\)](http://dev.mysql.com/doc/refman/5.6/en/innodb-parameters.html#sysvar_innodb_log_file_size). There is also some discussion on what values you should set the log files to (see <https://www.percona.com/blog/2008/11/21/how-to-calculate-a-good-innodb-log-file-size/> (<https://www.percona.com/blog/2008/11/21/how-to-calculate-a-good-innodb-log-file-size/>)). The maximum size these can be set to is 1024M.

IMPORTANT: If you change this setting, it would be a good idea to flush the existing logs (`ib_logfile0` and `ib_logfile1`). To do this, take the following steps:

- a) Log into MySQL: `mysql -u root -p`
- b) From the MySQL prompt, type: `SET GLOBAL innodb_fast_shutdown=0;`

Then type "quit" to log out of MySQL.

- c) Shut down MySQL: `rcmysql stop`

d) Rename the `ib_logfile0` and `ib_logfile1` files.

g) Start up MySQL: `rcmysql start`

h) If MySQL starts up successfully, you can delete the `ib_logfile*` files.

If you do not delete or move the existing `ib_logfile0` and `ib_logfile1` files from the MySQL data directory when changing the logfile size, MySQL does not load.

`innodb_log_buffer_size = 8M`

The log buffer allows transactions to run without having to write the log to disk before the transactions commit. If the transactions are large, then making the log buffer larger saves disk I/O. There is a status called "`innodb_log_waits`" in MySQL. This shows the number of times a wait was required for it to be flushed before continuing. If you have any waits, then the buffer size is too small. Here is the query you can run on that status: `SHOW GLOBAL STATUS LIKE 'innodb_log_waits';`

```
mysql> show global status like 'innodb_log_waits';
+-----+-----+
| Variable_name | Value |
+-----+-----+
| Innodb_log_waits | 0     |
+-----+-----+
1 row in set (0.01 sec)
```

```
#innodb_flush_log_at_trx_commit = 1
#innodb_lock_wait_timeout = 50
```

To enable any one of those settings, remove the hash mark ("`#`") preceding it. The following is an example for a typical system that has 16G of total RAM, where 2G is allocated for the Linux OS and 8G to Tomcat. The amount allocated to Tomcat versus the database varies per customer. A system where a lot of queries/searches are made in Retain for items, or that runs multiple workers on the Retain Server itself, allocates more memory to Tomcat, like in this example; otherwise, a customer might want to favor MySQL a bit and give Tomcat a little less.

Changes to the `my.cnf` do not take affect until after MySQL is restarted. Again, if you changed the log file size setting, you must follow the steps listed above or MySQL fails to load.

Once MySQL loads successfully, you can start tomcat [“Starting and Stopping the Retain Server” on page 53](#).

Installing a Retain Server on Linux

- ♦ [“Retain Prerequisites for Linux Servers” on page 22](#)
- ♦ [“Downloading and Preparing the Retain Installation Files on Linux” on page 22](#)
- ♦ [“Installing the Retain Server” on page 22](#)

Retain Prerequisites for Linux Servers

IMPORTANT: Make sure you have planned your deployment before installing the software. For example, if the Linux server doesn't have the minimum [RAM Requirements](#) for the components you specify, the installation aborts. Refer to the official Apache website for instructions on how to set up SSL on Apache2.

Successfully installing Retain and/or its components on Linux servers, requires the following:

- ♦ **An Apache Web Server:** Installed and running on each Linux server as outlined in [“Linux Web Server” on page 10](#).
- ♦ **Access to the appropriate JDK running on the system:** By default, the installer expects the appropriate JDK to be running on the Linux system. (For Retain 23.4, this is JDK 17)

If the appropriate JDK is not found and the server is connected to the Internet, the install automatically downloads and installs the JDK.

If the appropriate JDK is not found and an Internet connection is not available, you must type the path to the appropriate JDK installation source files on the Linux server before the installation will continue.
- ♦ **Synchronized server clock:** Before you start the Retain install, the Linux server must be synchronized with the time on your network. For example, if your organization uses NTP, configure the server with your organization's NTP settings.

Downloading and Preparing the Retain Installation Files on Linux

Do the following:

- 1 Using your [OpenText Customer Center](#) account, download the latest version of Retain to the Linux server where you are installing Retain or one of its components.
- 2 Extract the archive into a new folder.
 - ♦ **Graphical Interface:** Right-click the download and select [Extract Here](#).
 - ♦ **Terminal Prompt:** Enter the following command

```
unzip Retainversion.zip
```

where *version* is the release version number in the .zip filename.
- 3 Make the script executable.
 - ♦ **Graphical Interface:** Right-click the download and select [Properties > Permissions tab > Allow executing file as program](#).
 - ♦ **Terminal Prompt:** Change to the Retain install folder that you just extracted, then enter the following command:

```
chmod +x *.sh
```

Installing the Retain Server

The Retain Server is the main component of a Retain deployment and is installed on only one Linux server. Other Retain components can be installed with Retain or separately (as explained in [Step 5](#) below).

IMPORTANT: Make sure that you have planned your deployment before installing Retain software. If the Linux server doesn't have the minimum RAM for the components you select, the installation aborts.

Retain installs an embedded Tomcat. Consider removing any existing Tomcat installation prior to installing Retain components.

- 1 If you have not already done so, download and prepare the target server with the Retain installation files, as instructed in [“Downloading and Preparing the Retain Installation Files on Linux” on page 22](#).
- 2 Acting as `root`, access the server's terminal prompt and enter the following command:

```
./RetainInstall.sh
```
- 3 Read and accept the license agreement.

TIP: To go immediately to the acceptance prompt, type `q`.

- 4 Read the software requirements and press Enter.
- 5 The install prompts for which of the following Retain components you want to install on the server:

Component	Placement Detail
Retain Server	Install one instance of this on the main server in your deployment
Stubbing Server	This only applies to GroupWise. See “Stubbing Server Overview” in <i>OpenText Retain CE 23.4 : Configuration and Administration</i> .
Reporting and Monitoring Server	Generally, you should install this on the Retain server.
Retain Worker	Generally, you should install a Worker on the Retain server. for troubleshooting purposes. Instructions for installing production-use Workers follow this section in “Deploying Production-Use Worker Agents on Linux” on page 49 .
Retain Message Router	Install this in the DMZ. For instructions, see “Installing a Retain Message Router on Linux” on page 50 .

Type `y` to install a component; `n` to not install it.

- 6 The install checks the server for the supported version of Java (currently JDK 17).
If the required version is not found on the server, the installation downloads [the correct version](#), and then upgrades or installs Java as needed.
If the download connection fails, the installer asks whether you want to retry, abort the installation, or specify a local path to the Java installation package.
- 7 The install restarts Tomcat and alters the runlevel so that Retain starts automatically when the system does.
- 8 When the installation completes, it displays the URL for accessing the Retain Server's web console in a browser and returns to the terminal prompt.

- 9 Open a terminal prompt and verify that the Retain Server installed by checking that both Apache 2 and Retain Tomcat are running by entering the following commands:

```
service apache2 status
service retain-tomcat status
```

- 10 Continue with [“Running the Retain Server Configuration Wizard”](#) on page 34.

Installing a Retain Server on Windows

- ♦ [“Downloading and Preparing the Retain Windows Installation Source Files”](#) on page 24
- ♦ [“Prerequisites”](#) on page 24
- ♦ [“Retain Install”](#) on page 25

Downloading and Preparing the Retain Windows Installation Source Files

Do the following:

- 1 Using your [OpenText Customer Center](#) account, download the latest version of Retain to the Linux server where you are installing Retain or one of its components.
- 2 Using Windows Explorer, extract the archive into a new folder.

Prerequisites

Before running the Retain installer, you must first ensure that the following are installed and working:

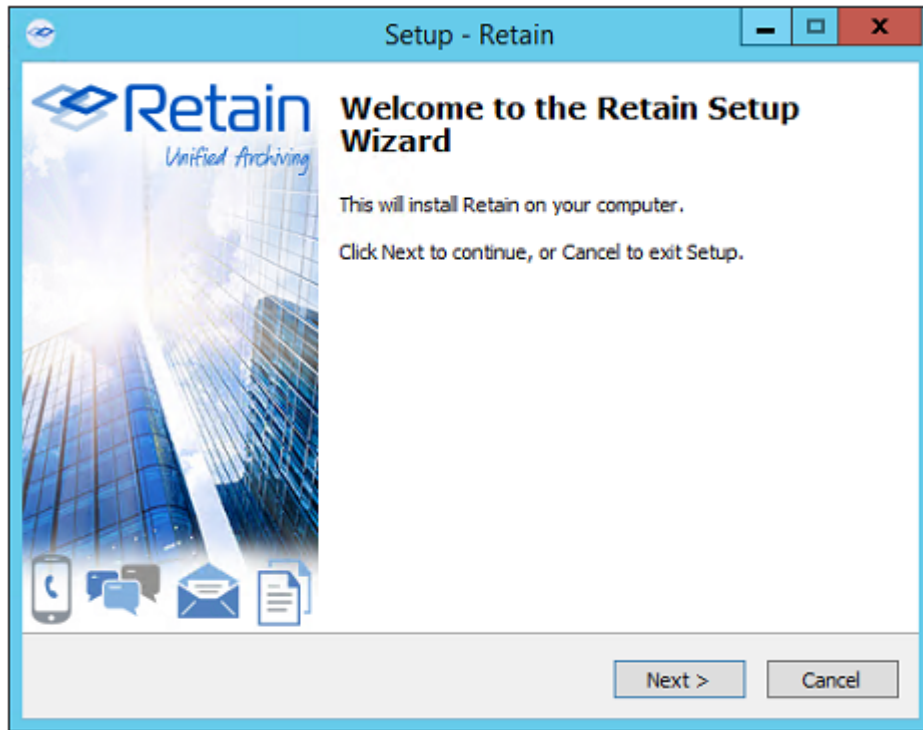
- ♦ **A Web Server:** Installed and running on each Windows server as outlined in [“Windows Web Server”](#) on page 10.

NOTE: IIS has a size limit restriction which limits uploads of message and attachment archiving to 30MB, by default. Refer to the official microsoft website for instructions on how to set up SSL on IIS.

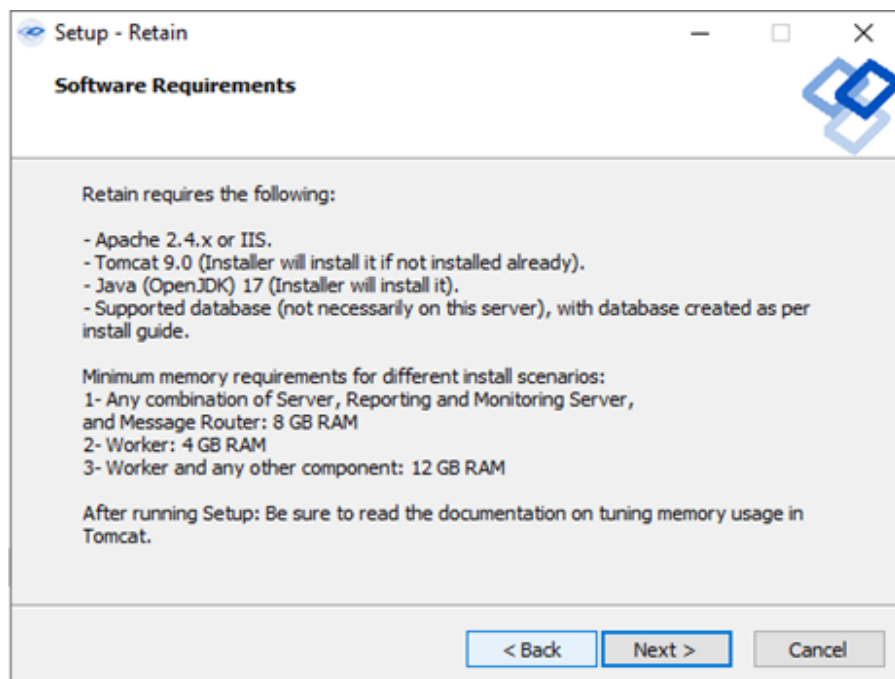
- ♦ **PowerShell 3.0 or higher:** If PowerShell's execution policy is set too restrictively, the install fails. See [Set-ExecutionPolicy](https://docs.microsoft.com/en-us/powershell/module/Microsoft.PowerShell.Security/Set-ExecutionPolicy?view=powershell-5.1) (<https://docs.microsoft.com/en-us/powershell/module/Microsoft.PowerShell.Security/Set-ExecutionPolicy?view=powershell-5.1>).
- ♦ **Access to the appropriate JDK running on the system:** For Retain 23.4, this is JDK 17.
If the appropriate JDK is not found and the server is connected to the Internet, the install automatically downloads and installs the JDK.
If the appropriate JDK is not found and an Internet connection is not available, you must browse to the appropriate JDK installation source files on the Windows server before the installation will continue.
- ♦ **Synchronized server clock:** Before you start the Retain install, the Windows server must be synchronized with the time on your network.

Retain Install

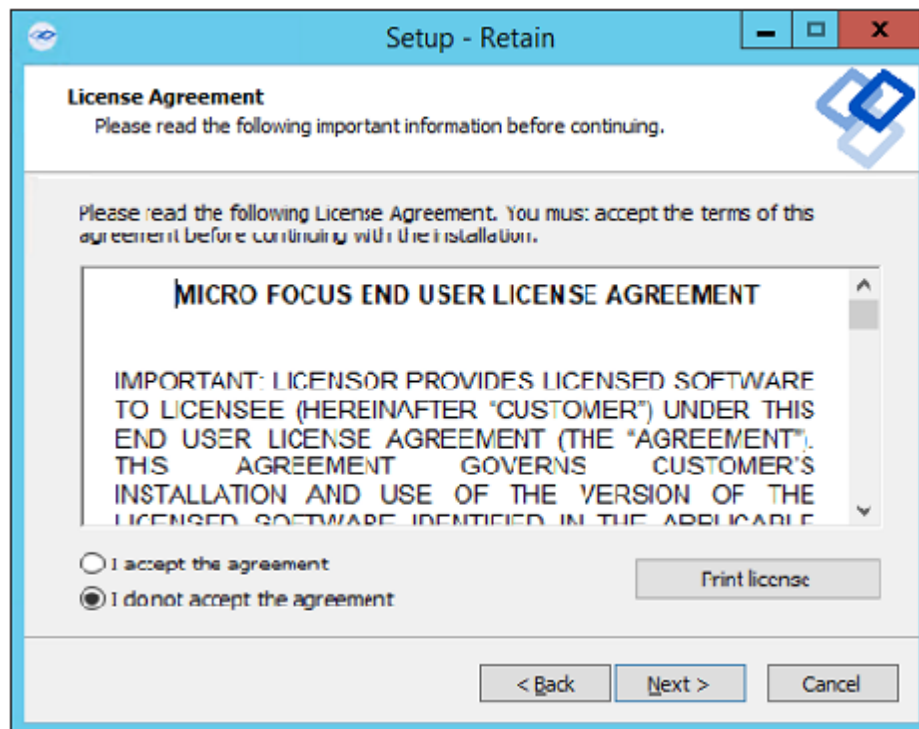
- 1 Prepare the Retain installation software on the server as instructed in [“Downloading and Preparing the Retain Windows Installation Source Files”](#) on page 24.
- 2 Run “RetainInstall.exe”. NOTE: If it already exists, the installer automatically shuts down Tomcat.
- 3 The Retain Setup Wizard welcomes you to the installer.



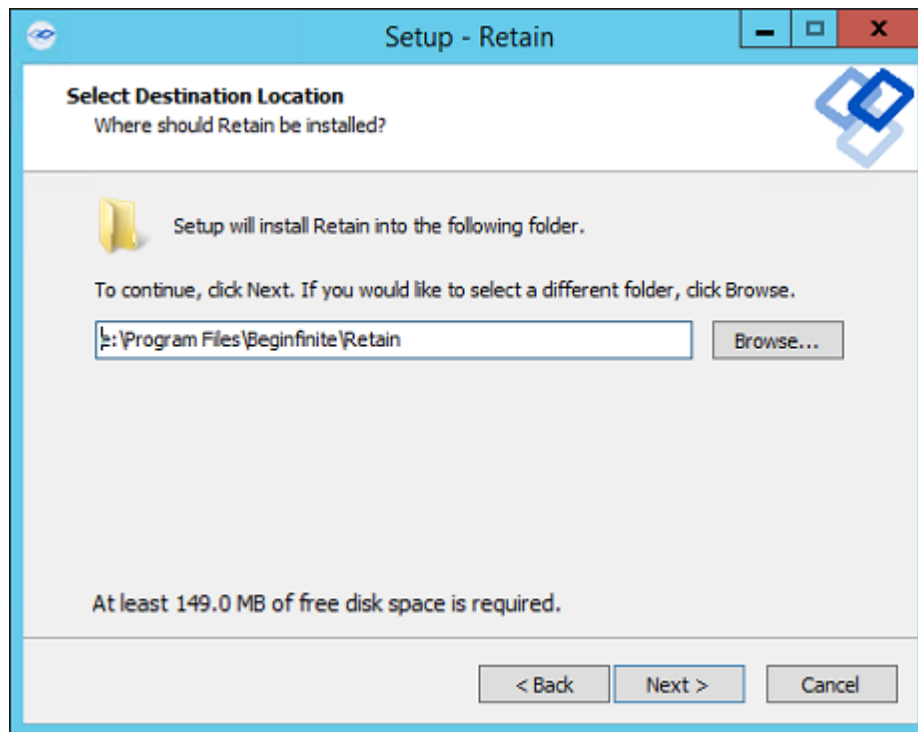
- 4 The Wizard reminds you of the Software Requirements. Click 'Next' to continue.



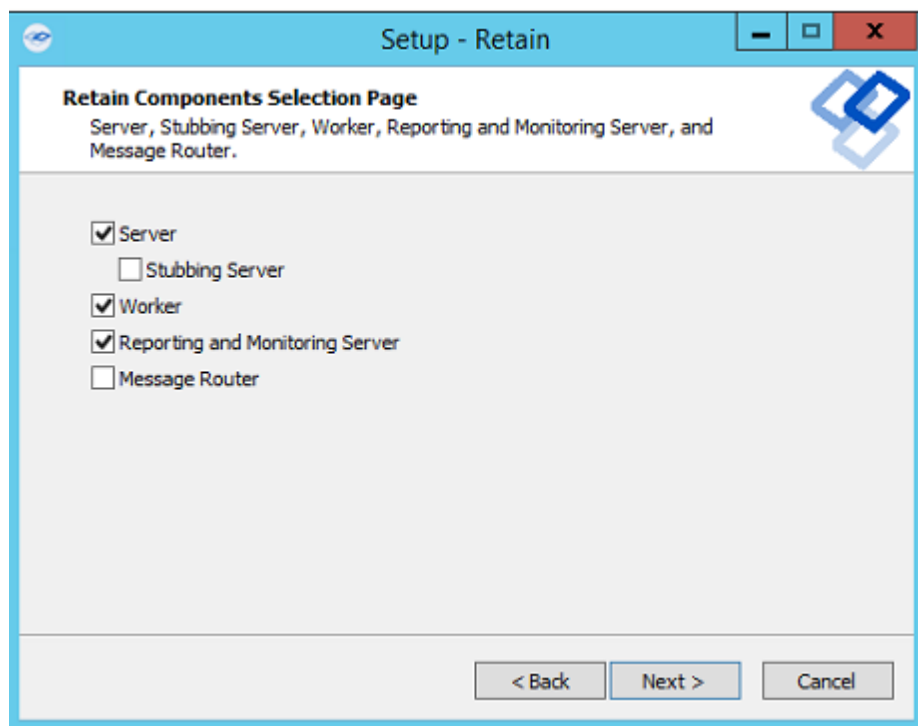
5 Agree to the license agreement.



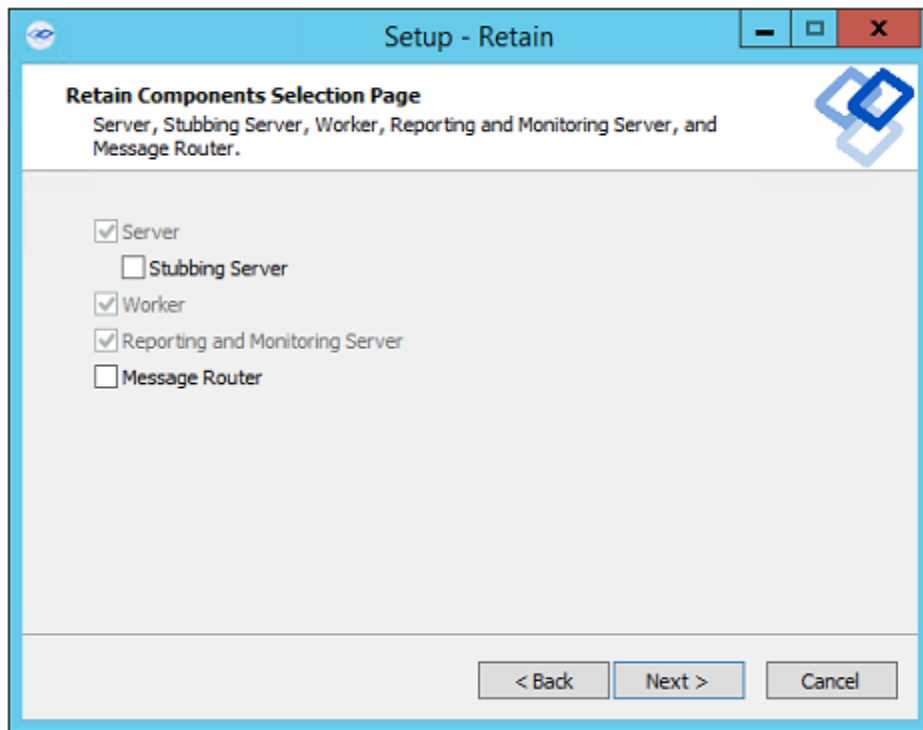
6 Select the install location.



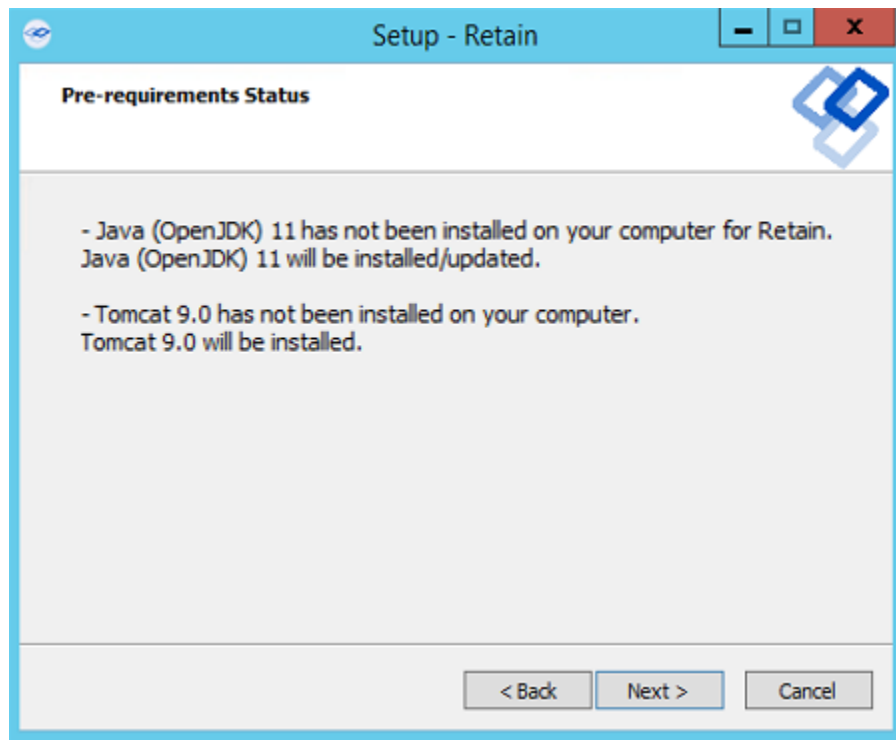
- 7 Select the program features to install. (Retain Server, Stubbing Server, Retain Worker, Reporting and Monitoring Server, and the Message Router.)



7a. If you are upgrading, previously installed components are preselected and you can select additional modules to install.

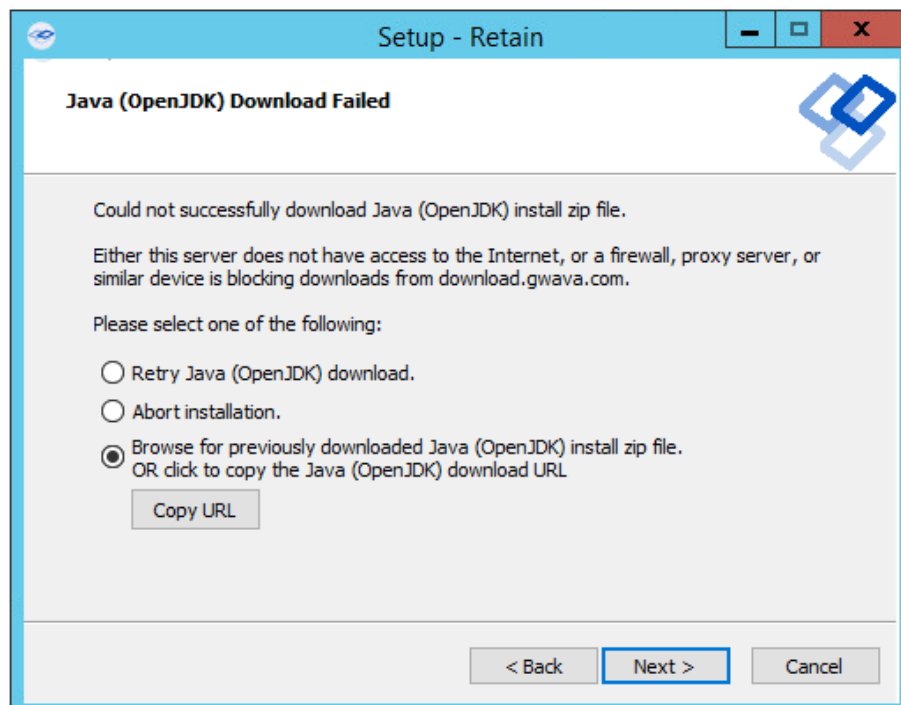


- 8 Pre-requirements status is displayed. Installer attempts to detect previous Tomcat installations. If none are found, it asks whether Tomcat has been installed. Indicate 'yes' or 'no'. Tomcat 9.0 is the supported version with Retain.23.2. Please note that the environment variable 'RETAIN_CATALINA_HOME' is set after Tomcat installation. Click 'Next' to continue.

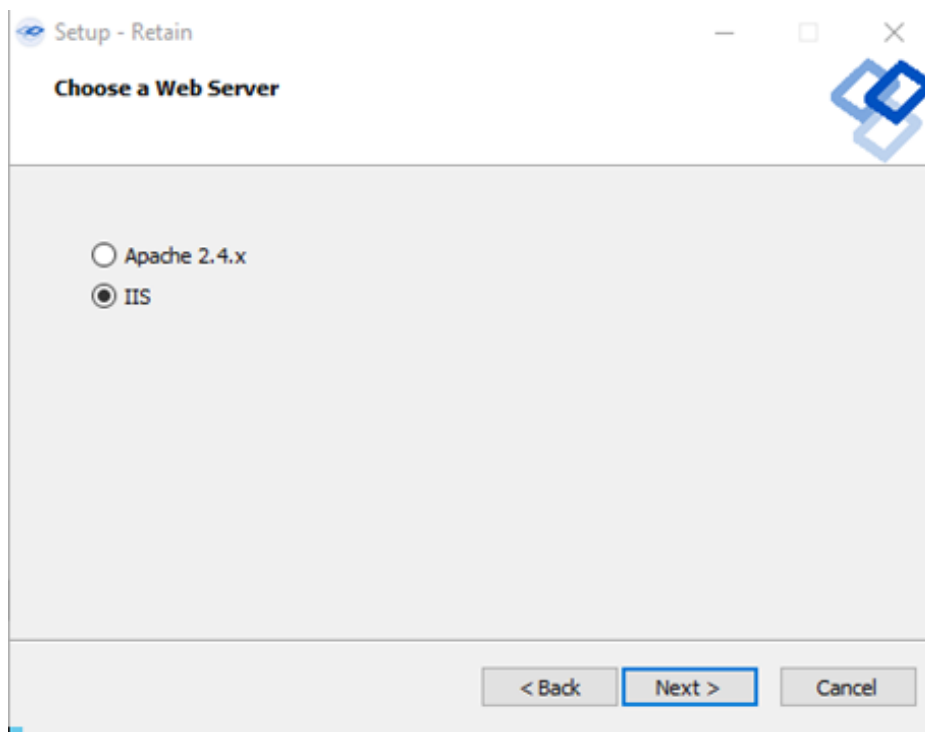


Java and Tomcat are installed or upgraded. (Note: If there are issues with Apache and Tomcat starting correctly, set the Java initial memory pool and the maximum memory pool to the same value, appropriate to the system and expected load.) Tomcat is run as a System Service and shows up in the system services list as "Retain Tomcat 9". (Start | Run | services.msc)

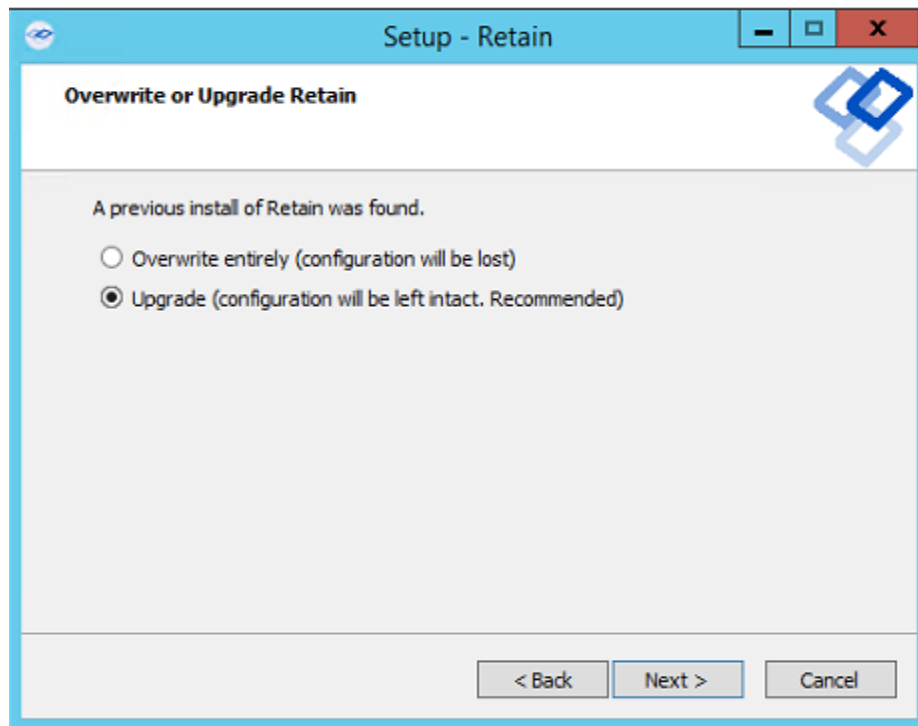
If an Internet connection cannot be made, the installer asks whether to retry, to abort, or use a local path to the Java installation package. You can download the correct version of the Java installer for Windows [here](#).



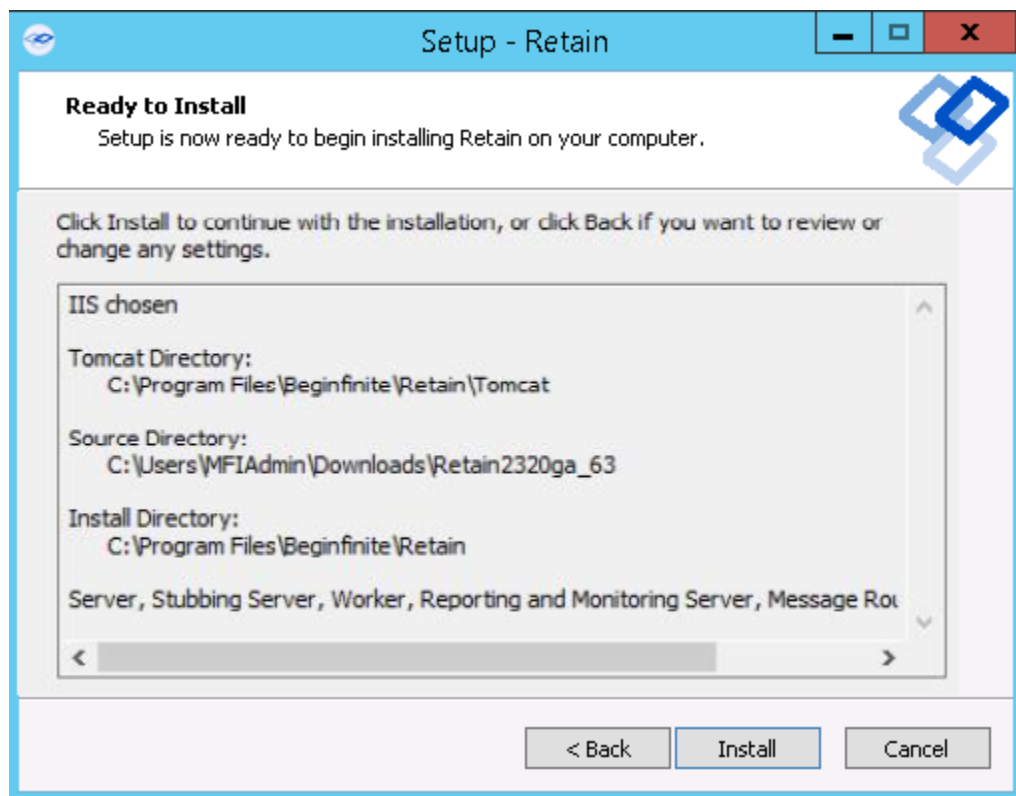
- 9 Select either Apache or IIS. (If apache, provide the installation directory.)



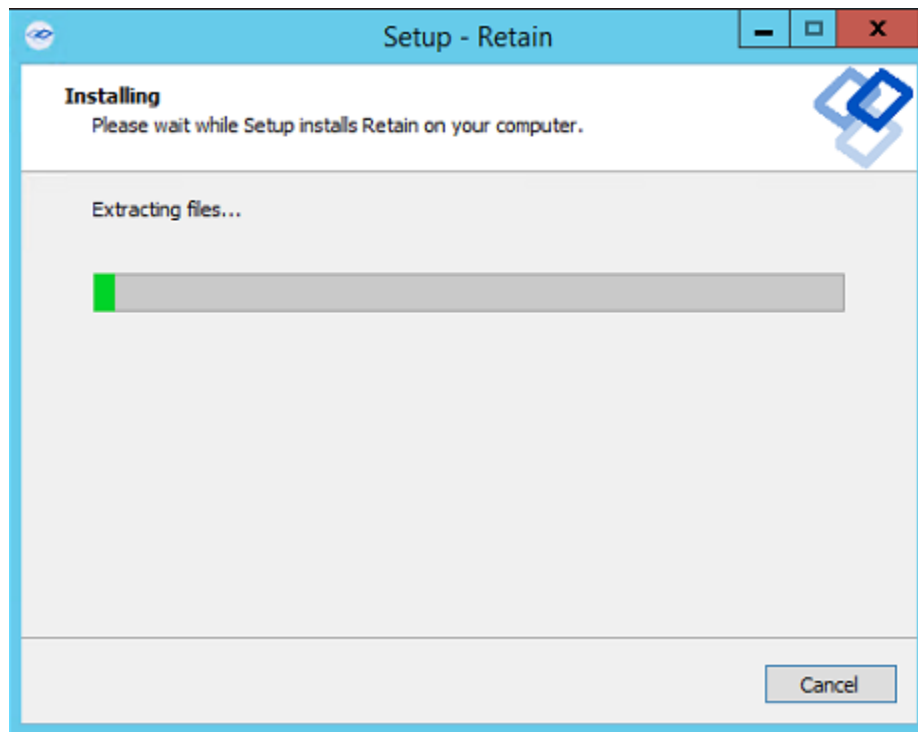
- 10 If a previous version of Retain is detected, upgrade options are displayed; Overwrite or Upgrade. Generally, you should choose Upgrade. Click Next.



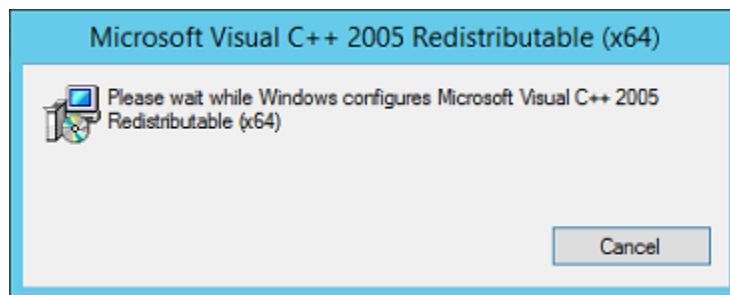
11 Confirm settings and select 'Install'.



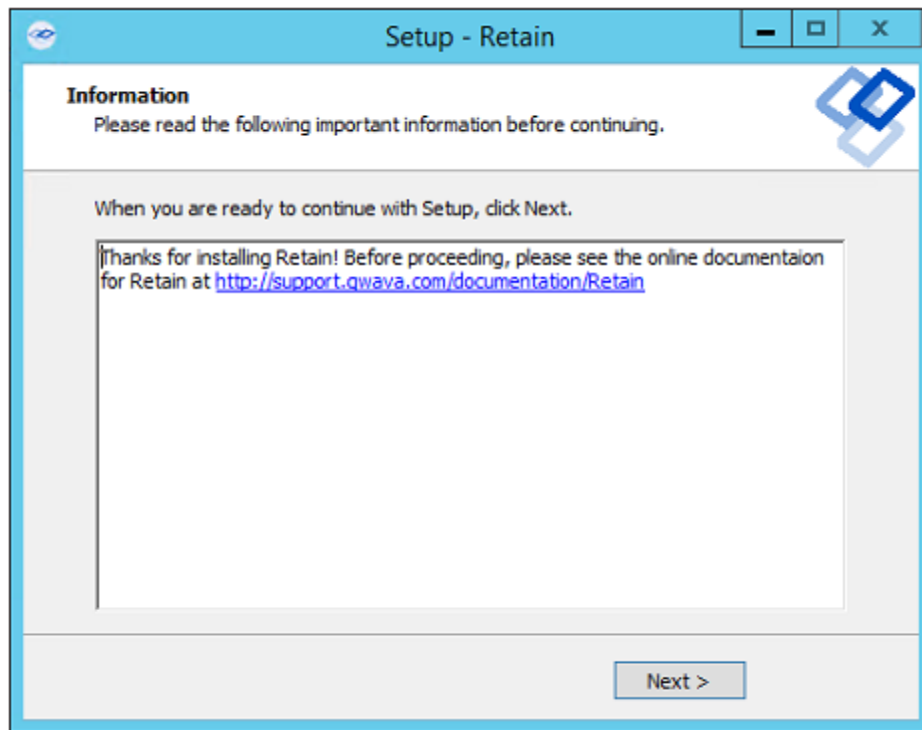
12 The product installs.



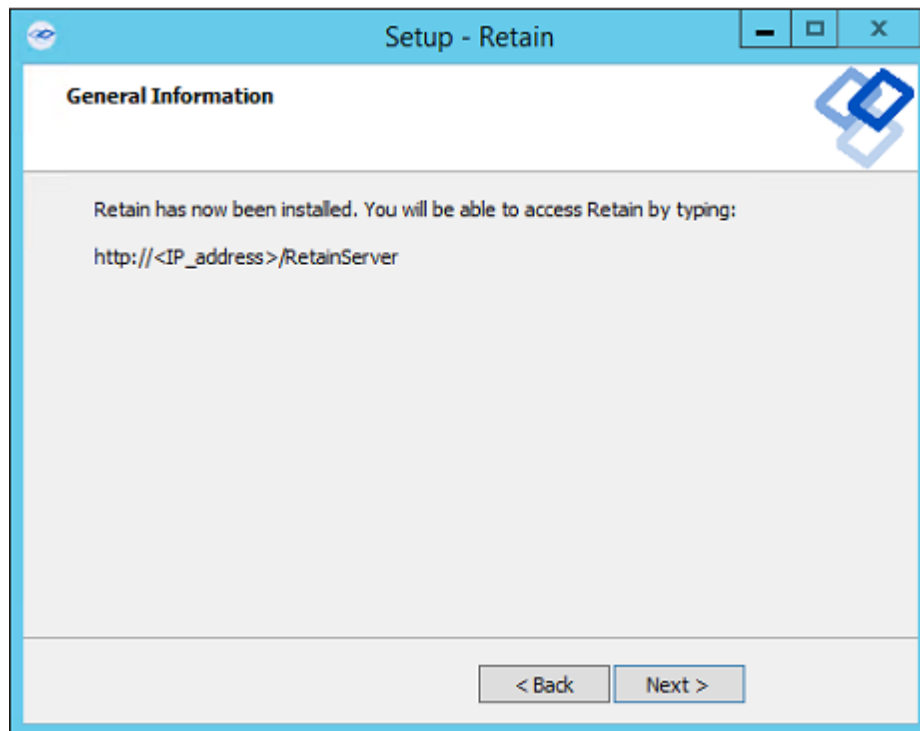
- 13 If Microsoft C++ 2005 Runtime distribution is not installed, the appropriate version is automatically installed.



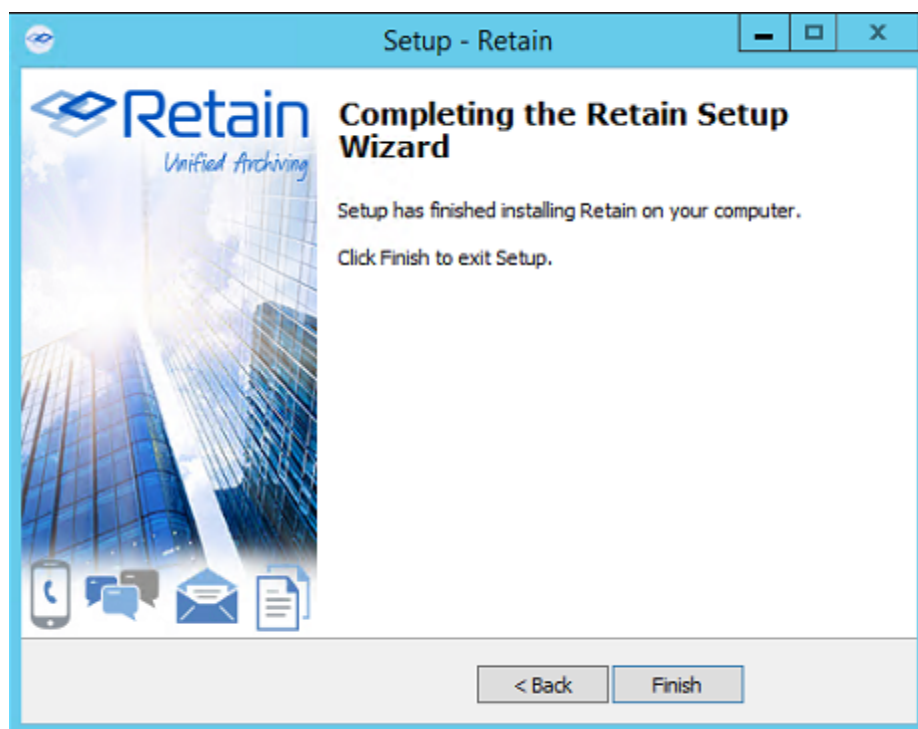
- 14 The Setup Wizard thanks you for installing Retain.



- 15 The Setup Wizard shows you the URL to the Retain admin console.



- 16 The Retain installation process is complete. Click Finish.



17 Continue with “[Running the Retain Server Configuration Wizard](#)” on page 34

Running the Retain Server Configuration Wizard

After installing the Retain Server, you must run the initial configuration wizard to prepare the server for working with all the components that will constitute your Retain deployment.

Do the following:

- 1 On an administrative workstation, open a [supported administrative web browser](#).
- 2 Go to `http://RetainServer-IP-or-DNS/RetainServer`.
- 3 Run the wizard to configure the Retain Server as outlined in the following table.

Table 1-1 Running the Retain Server Configuration Wizard

Panel or Prompt	Action	Information
Welcome > File Path	<p>1. Set the paths for Retain as planned in “Storage Planning” in <i>OpenText Retain CE 23.4: Planning</i>.</p> <p>By default, all data is stored as follows:</p> <ul style="list-style-type: none"> ♦ Linux: /var/opt/beginfinite/retain ♦ Windows: C:\Retain <p>By default, zookeeper path is as follows:</p> <ul style="list-style-type: none"> ♦ Linux: /var/opt/beginfinite/retain ♦ Windows: \Retain\zookeeper <p>Retain derives all file paths from this base path.</p> <p>2. If you need to alter the base path, select Custom in the drop-down list and specify an alternate path.</p> <p>IMPORTANT: ♦As outlined in “Setting Custom Storage Path Rights on Linux” in <i>OpenText Retain CE 23.4: Planning</i>, specifying an alternate storage path on a Linux system requires that you grant sufficient rights to Retain before running this wizard.</p> <ul style="list-style-type: none"> ♦ Ensure that the ownership of the base path is set to tomcat : www, otherwise, the runtime Zookeeper directory creation fails. For more information, see the Indexes section in the <i>OpenText Retain CE 23.4: Planning</i> guide. <p>3. To customize the path for each item (attachments, XML mappings, etc.), click Advanced Settings and disable the Derive all file locations from above specified path? option.</p> <p>4. When the path settings are complete, click Continue.</p>	<p>Storing data on separate volumes can yield significant performance increases. Therefore, Retain lets you specify where you want to store archived data, indexes, and so on.</p> <p>If you are running Retain on a Windows Server, Solr9 disallows the use of Windows SMB shares on the UNC format, such as \\myhost\myshare\mypath. For the indexer storage path, you are can use a drive and mount later. As a workaround, map the storage path in UNC format to a symbolic link folder on the local drive:</p> <ol style="list-style-type: none"> 1. On the server where Retain is running, run the following command in the Windows Command Prompt: <code>mklink /D C:\myLink \\IP address\c\Retain\Index</code> In the above command, C:\myLink corresponds to the linked folder on the local drive and \\IP address\c\Retain\Index corresponds to the storage path in UNC format. 2. Ensure that the Retain Tomcat service is running as a user who has access to the shared folder. If not, please update the service and restart Tomcat.

Panel or Prompt	Action	Information
Message Store Database	<ol style="list-style-type: none"> 1. Enter the database connection information for the database you created in “Creating and Maintaining an SQL Database” on page 11. 2. Click the Enable SSL check box to secure the database connection to Retain. Else, click Continue and proceed to “Configuration Database” on page 37. 3. If the SSL is enabled and the database type is MariaDB, MySQL, PostgreSQL, and MSSQL, select one of the options from the Choose Trust Mode dropdown list. <ul style="list-style-type: none"> ♦ Allow only trusted certificate: This allows only trusted certificates and you can upload the SSL certificate created during SSL configuration. ♦ Allow all certificate: if this option is selected, and the SSL is configured with the database, then all the certificates are trusted. <p>If your database type is Oracle, the Private Key and Certificate will be a single file and you must provide an alias name and password while uploading the certificate .</p> 4. Browse to and select the Database client server’s Private Key and Certificate files that you identified in “Securing the Database Connection” in the OpenText Retain CE 23.4: Planning guide. Following are the supported and certified files formats: <ul style="list-style-type: none"> ♦ MSSQL - .pfx ♦ Postgres - .pem and .crt ♦ MariaDB - .pem and .crt ♦ MySQL - .pem and .crt ♦ Oracle - .p12 5. Based on the database type, the certificates can be either a lone certificate or a key pair. The certificate name has to be unique else you will not be able to upload the file. To create a key pair, you must upload the cert .pem first and then the key .pem. Ensure that the alias name given for both the files are same. Only self-signed certificates need to be manually trusted. Registered CA-signed certificates are automatically trusted 	This is the database that stores meta data for messages and other data archived in the datastore.
	6. Click Continue .	

Panel or Prompt	Action	Information
Configuration Database	<ol style="list-style-type: none"> 1. Enter the database connection information for the database you created in “Creating and Maintaining an SQL Database” on page 11. 2. Click Continue and continue with “Administrator Account” on page 37 	<p>This is usually the same as the Message Store Database, so all connection information is carried forward to this dialog except the password.</p>
Administrator Account	<ol style="list-style-type: none"> 1. Specify and confirm a password for the main administrator account. 2. Click Continue. 	<p>This account</p> <ul style="list-style-type: none"> ♦ Has all admin rights. ♦ Never expires. ♦ Can authenticate when the system is offline. <p>NOTE: Retain lets you create as many user accounts with administrative roles as you need. If this account is deleted, you will need to contact OpenText support.</p>
SMTP Notifications	<ol style="list-style-type: none"> 1. Enter the following information: <ul style="list-style-type: none"> ♦ SMTP Server: The DNS hostname (preferred) or IP address of the SMTP server that Retain should use for emailing notifications. ♦ From address: The From address shown on the messages that Retain sends. ♦ To address: The address to which Retain sends notifications through the SMTP server. ♦ Username: The username for authenticating with the SMTP server. ♦ Password: The password for the username. ♦ Click Continue. 	<p>Retain uses an SMTP relay host for sending notifications.</p> <p>The wizard attempts to send a test message.</p> <p>You shouldn’t proceed with setting up Retain until the SMTP test message is successfully delivered. If you see an error, check firewall settings, including local application firewalls running on affected desktops and/or servers.</p> <p>If no SMTP is present, you can skip this step by typing <code>skip</code> in the SMTP Mail Server field. This disables Retain’s notification services and is therefore not recommended for production deployments.</p>
Indexing Engine	<ol style="list-style-type: none"> 1. Enter the admin password you set earlier. 2. Click Continue. <p>The system initializes and connects to the indexing engine.</p>	<p>The default port for indexer is 8081. You can change the port if required.</p>

Panel or Prompt	Action	Information
Retain Server Connections	<ol style="list-style-type: none"> Set up the Retain Server connection. This sets the connection for the Router (“Retain Message Router Configuration Page” in <i>OpenText Retain CE 23.4 : Configuration and Administration</i>) and REST applications. When possible, use the Retain Server’s DNS hostname so that external devices can resolve to it. 	
(Optional) Cloud Mobile Service Proxy Connection	<ol style="list-style-type: none"> (Optional) Configure the Cloud Mobile Service (CMS) Proxy Connection. If you would like to provision and register devices using CMS and have a Proxy server for your Retain server, you can specify the Proxy server information here. Click Continue > Complete. The Retain login prompt displays. 	

Retain’s Browser-based Management Tool

You manage the Retain server and its associated components using browser-based administrative consoles.

- ♦ [“Logging In as an Administrator” on page 38](#)
- ♦ [“Retain Server Administrative Console” on page 39](#)
- ♦ [“Always Remember to Save Changes” on page 40](#)
- ♦ [“Notifications” on page 40](#)

Logging In as an Administrator

- Enter the following URL in an [administrative web browser](#).

`http://Retain-Server-IP-or-DNS/RetainServer`

- Sign in as admin by using the [password that you specified in the configuration wizard](#).

Users with administrative rights see the administrative console below. Non-administrators see only the Search interface documented in [“Using Retain’s Archives”](#) in the *OpenText Retain CE 23.4: User Guide*.)

Retain Server Administrative Console

Figure 1-1 The Retain Server’s Administrative Console Landing Page

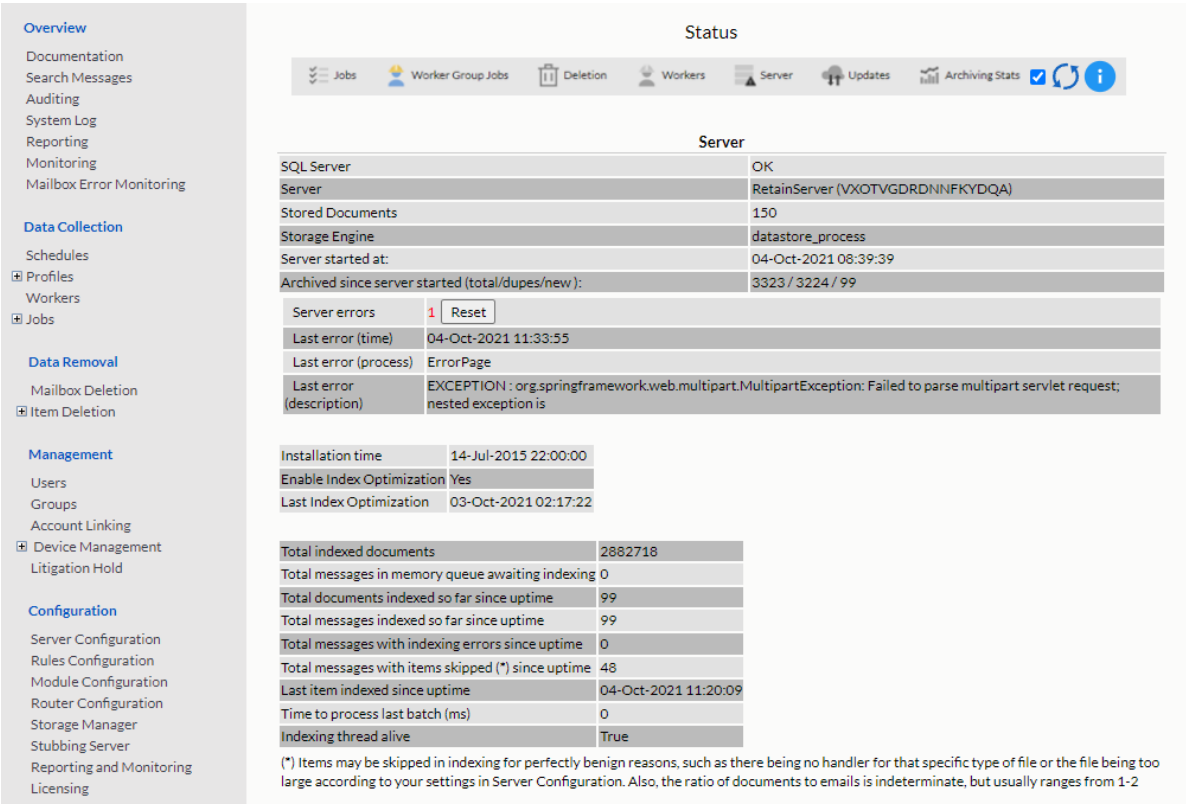


Table 1-2 Navigating Retain’s Administrative Console’s Landing Page

Field, Option, or Button	Information and/or Action
--------------------------	---------------------------

Left Navigation Panel

This provides access to all of the Retain server’s configuration and management dialogs. Panel items grow dynamically as you add components to the Retain infrastructure,

For example, the Overview section initially has four entries: Documentation, Search Messages, Auditing, and System Log. When you add a Reporting and Monitoring server, the entries expand to provide direct access to those services.

Status Panel

The status panel has seven tabs: Jobs, Worker Group Jobs, Deletion, Worker, Server, Updates, and Archive Stats.

When you open the Retain Console, the tab requiring the most attention displays.

For example, if a Server Error has occurred, the Server tab displays. If an update is available, the Update tab displays, and so on.

Statistics in the tabs are for the current server session. They are cleared and start fresh each time the Retain server (Apache Tomcat) starts/restarts.

Field, Option, or Button	Information and/or Action
Jobs Tab	<p>This shows the server's archiving jobs and their status.</p> <p>To see only active jobs, select the Show only active jobs option.</p>
Worker Groups Jobs Tab	<p>This displays the worker Group Jobs with workers and other statistics like Current Job began, Ended, their last active jobs, list of workers, totals etc.</p> <p>There are options to see the last job details and deleted message details.</p>
Deletion Tab	<p>This shows the server's deletion jobs and their status, including the remaining items marked for deletion in the database and file system.</p> <p>To see only active jobs, select the Show only active jobs option.</p>
Worker Tab	The workers tab displays the workers and their last active jobs, connections, and totals.
Server Tab	The Server tab shows the basic status of the Server with the messages archived and maintenance information.
Updates Tab	<p>The updates tab indicates that the latest version is installed or that there is a later version available.</p> <p>IMPORTANT: Information displays only during initial access to the console's landing page after the server starts/restarts. Navigating to another section of the console clears tab content.</p> <p>You must restart Tomcat to display the information again.</p>
Archive Stats Tab	<p>This tab is deprecated and its functionality replaced by the Reporting and Monitoring server.</p> <p>Basically, it provides a small statistics summary from a basic search of the server's archive statistics.</p>

Always Remember to Save Changes

When you see Save Changes highlighted in red at the top-right corner of the screen, be sure to click it. Otherwise, changes you have made are lost.



Notifications

Retain uses its [SMTP configuration](#) to notify when data is moved because of a system migration, or exporting, forwarding, restoring or publishing data.

To view the Notifications Center page, click the Welcome link at the top of the Admin Console page. A lifted-flag icon indicates new notifications.

Notification Center

[Refresh](#)[Mark All Read](#)[Delete All](#)

When you perform actions such as forwarding, exporting, and restoring, you will receive notification messages here to let you know that the task has completed, and provide some information as to the success or failure of the task.

No messages

The highlighted notifications are new, unread notifications and events. Selecting the event notification provides all the pertinent information regarding the event.

If there are errors, Retain provides a truncated error log that details the error and the reason for it.

Licensing

About Retain Licenses

Retain comes with a 30-day trial license. This is a fully operational trial to see if Retain works with your system.

When your licenses expire, Retain displays only the license page so that you can upload a valid license.

There are two kinds of licenses: PEM and REST. PEM licenses are used for most functions. Some functions require using the REST API, which requires a REST license as well.

The Licensing Page

The Licensing page lets you view and manage the licenses installed in the Retain System. The status displays active users, inactive users, merged mailboxes, and individual counts for active and inactive users on each licensed module.

Path: [Retain Server Manager](#) > [Configuration](#) > [Licensing](#)

General Summary Panel

- ♦ **Date** contains today's date.
- ♦ **Product** is what version of Retain is currently installed.
- ♦ **License Count** is the number of mailboxes archived by Retain. **Active** mailboxes have had data archived in the last 90 days, **Inactive** mailboxes have had no new data archived in the last 90 days.
- ♦ **Merged Mailboxes** is the number of mailboxes merged with Mailbox Mapping Options and/or the Mailbox Merger/Splitter.

Generate Licensing Report creates a PDF file which displays the same information as seen in the **License Summary** section and lists the licenses.

Licenses Panel

The Licenses panel displays the currently installed license.

After the initial installation, Retain functions for 30 days for evaluation purposes.

When this period elapses, the following occurs:

- ♦ Users without the "Manage Servers" right are not allowed to log in at all.
- ♦ Users with the "Manage Servers" right are allowed access, but only to the Licensing Page.
- ♦ All jobs continue to be processed normally

Installing Your Retain Licenses

You should receive an email with your validation keys, including one for base server access and another for the module used for archiving from your email system. You can also find the keys in the [OpenText Customer Center](#).

1. Log in to the [OpenText Customer Center](#).
2. Select the proper Product from the drop down menu.
3. Enter the Validation Key and click **Next**.
4. Fill out the contact information and click **Next**.
5. Download the PEM file.

Submitting a PEM License

To upload a new PEM license:

1. Browse to the RetainServer console.
2. Select *Licensing* from the left navbar.
3. Scroll to the bottom of the page.
4. Click the **Choose File** button from the **Submit License** section.
5. Browse to and select the desired license file.
6. Click the **Submit License** button.
7. The new license is added to the system.
8. Log out and in again to the server to see the license in effect.

Installing a REST License

Some components require that you install a REST license file.

1. Go to *Server Configuration/REST API*.
2. Scroll down to Submit License, Browse to the ZIP file and press Submit License.

Submit License

Browse...

No file selected.

Submit License

- The license is uploaded to the Retain server and appears in the list under Application Settings. The Application reflects what system Retain can connect to via REST.

Server Configuration

Communications
Index
Storage
Accounts
Maintenance
Logging
Miscellaneous
Module Forwarding
REST API

REST API

The Retain REST API allows external applications to interact with the archive. In order to enable the API, a base API license is required. Additionally, an application license is required for each application that requires access to the API.

License Summary

Global Settings

	API Enabled	True
	License begins	Mon Dec 28 12:02:10 MST 2015
	License expires	Mon Feb 21 10:59:59 MST 2033
	Maximum read requests per minute	100000
	Maximum write requests per minute	60000
	Maximum read requests per application per minute	10000
	Maximum write requests per application per minute	6000
	Maximum read requests per user per minute	10000

Application Settings

Application	GBS Development License
Application Key	BA5F9F21-DB49-4EA3-9AAB-C717F54380C7
Enabled	True
License begins	Tue Oct 25 11:35:02 MDT 2016
License expires	Wed Nov 18 10:59:59 MST 2020
Maximum read requests per minute	10000
Maximum write requests per minute	6000
Capabilities	Read, Manage, Insert, Search

Backing Up Retain

When you first set up Retain and dredge the email system you have two identical data sets.

When older items are deleted from the email system. That means Retain is the only repository of the data. When it comes to backups: "Two is one, one is none." That means if one fails, a backup remains or not. Depending on the type of your organization the legal ramifications of lost data can be significant.

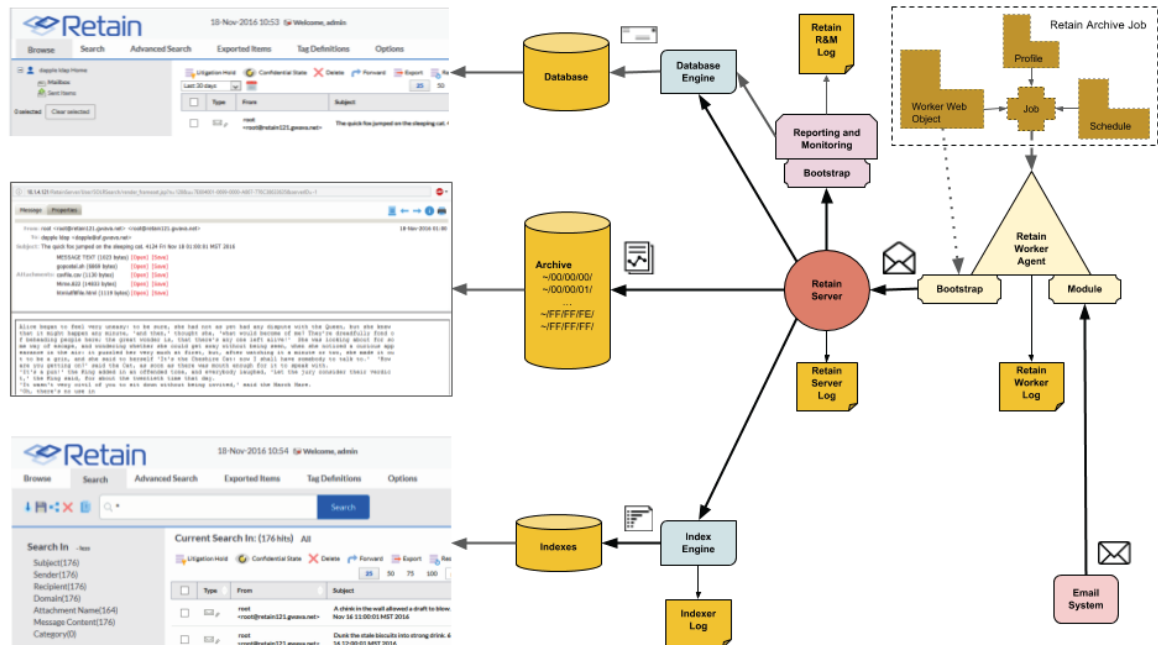
Installing Retain 23.4

43

Where Data Is Stored In Retain

There are only a few major places where data is stored in Retain. See “[System File Locations](#)” in *OpenText Retain CE 23.4: Planning*.

1. Program directory
2. Archive directory
3. Index directory (this may be on an external cluster)
4. Database directory (this may be on an external server)
5. Office 365 CSV files



The Reporting and Monitoring Server data is stored in the database.

The Archive Job configuration is stored in the database.

Each major part of Retain keeps logs of what is happening the primary ones being the RetainServer, RetainWorker, Indexer and the Reporting and Monitoring log as RetainStatServer.

When you are interacting with Retain, depending on what you are doing you are viewing different parts of Retain the data.

- When you browse messages, you are viewing the metadata of the message that is stored in the database.
- When you search messages, you are viewing the indexes of the messages.
- When you open a message, you are viewing the message as saved on disk.

All message content and attachments to messages are stored on disk in the Retain storage area in a directory off of the "archive" directory (Server Configuration | Storage | Advanced). Every message and attachment gets assigned a "hash". Because the byte count of every message and file is unique,

its hash value is unique. This is how Retain Server determines whether a message and/or attachment has already been processed and stored on disk when an archive job runs. That file's hash value is stored in the Retain database in the `t_document` and `t_attachment` tables.

The archive directory uses a load balancing strategy on disk. Thus, off the archive directory you'll find 256 two-digit subdirectories: 00 through FF. Each of those directories have their own set of 256 directories utilizing the same naming sequence (00 through FF). Additionally, those directories also have their own set of 256 subdirectories. Thus, if the filename were `B4F05EECB7B21D9014A86C32291C913D190C33394365AC79ED3E1F6849532`, you would find it under `.../archive/B4/F0/5E`.

When a user clicks on a message link in the Retain mailbox - whether from the Browse tab or the Search tab's search result list - Retain finds the file on disk and places the contents in the message window. If the original message was known to have text and the message window comes up blank, the file is missing from the location that Retain thinks it is in. This is extremely rare and usually only happens as a result of moving the archive directory to a new location. In such cases, we find that either the files did not all copy over properly from the old location or the administrator forgot to tell Retain where the new location is at.

Backing Up Retain

The archive directory consists of up to approximately 16.7+ million directories and the archives are stored evenly across them. This makes it hard (if not impossible) for the traditional file-based backup systems to back it up; thus, you either need a disk image (block level) backup or you need to use a backup/restore solution of your choice.

The three most critical pieces that must be backed up are the archive data (specifically, the "archive" directory), the Retain database and the configuration files. Losing even one of those pieces would mean that your archive data is completely lost. They are interdependent. Indexes can be recreated, although that takes time.

Virtual Machines

If you are running Retain on a VM and if you are using a purchased version of VMWare at any level, the purchased version provides a disk backup utility. This can be used to back up Retain if the VM's local disks are part of the VM guest itself. However, those backups can also take a lot of time as the data grows, so even in those circumstances, you still may want to consider using a backup/restore solution of your choice.



If the disks are external to the VM guest, then those disks need to be backed up. This article assumes that the reader understands how disks work with VMs. If you do not fully understand virtual machine concepts, we recommend that you consult with the person that set up and maintains your VM environment.

Finding Retain's Storage Paths

To find your Retain system's storage paths, do the following:

- 1 Log in to the administrative web console (`http://ipaddress_or_DNS-hostname/RetainServer`).
- 2 Under Configuration, click **Server Configuration > Storage**.

- 3 Click Advanced Settings and deselect the **Derive all file locations from the above base path** (unless it is already deselected).
- 4 The list of storage paths displays.

Server Configuration Save Changes  

Communications Index **Storage** Accounts Maintenance Logging Miscellaneous Module Forwarding REST API

Storage

The configuration database, indices, XML files, and the archive files are stored under the storage path which should be on a highly reliable storage device with plenty of disk space.

The standard storage engine places archive files under the storage path. You may change the storage path on this screen; the storage engine can be changed from the Storage Manager menu.

Storage Engine datastore_process

Base Storage path /var/opt/beginfinite/retain

Advanced Settings

For more advanced scenarios, some paths may be assigned to one device and some to another.

Derive all file locations from above base path? ☐

Store attachments under this path /var/opt/beginfinite/retain/archive

Store xml mappings under this path /var/opt/beginfinite/retain/xml


Store Indexes under this path /var/opt/beginfinite/retain/index

Store Embedded DB under this path /var/opt/beginfinite/retain/ebdb

Store PDF exports under this path /var/opt/beginfinite/retain/export

Store backups under this path /var/opt/beginfinite/retain/backup

Store license under this path /var/opt/beginfinite/retain/license

Encryption (none) 

Compression (always on)

NOTE: The information shown in the Storage tab in the Server Configuration screen is also stored in the `ASConfig.cfg` file.

What to Back Up

Other than backing up the archive directory structure, there are a few areas of Retain that are important to backup that would not require a disk image (block level) backup:

1. Configurations files
 - ♦ `ASConfig.cfg`
 - ♦ Indexer configuration files
2. Database (critical)
3. License
4. Index files (these can be rebuilt but that process can take days, weeks or months during which time your searches cannot produce full results)
5. Office 365 address book CSV files.

File Locations

1. Configuration files.

- ♦ ASConfig.cfg is stored in a directory off of your Retain installation:
Linux default: /opt/beginfinite/retain/RetainServer/WEB-INF/cfg
Windows default: [Drive]:\Program Files\Beginfinite\Retain\RetainServer\WEB-INF\cfg
- ♦ Indexer configuration files (the entire directory's contents):
Linux default: /opt/beginfinite/retain/RetainServer/WEB-INF/solrweb/WEB-INF/cfg
Windows default: [Drive]:\Program Files\Beginfinite\Retain\RetainServer\WEB-INF\solrweb\WEB-INF\cfg

2. Database.

- ♦ The location is too varied to mention here. Each customer should know where their Retain database resides.

3. License.

- ♦ The license directory is located under your storage path.

4. Indexes.

- ♦ Because the Index directory can be in a constant state of change, it is recommended that you back up the index subdirectory located beneath the backup directory (also found under the storage path).
- ♦ When the Retain maintenance routine runs, it makes a backup copy of the index directory and places it here. The frequency of this backup is configured in the RetainServer interface under Server Configuration | Maintenance.

5. Office 365 address book CSV files. These files can be found under the CSV path designated in Module Configuration | Exchange Module | Hosted Services.

If performing an upgrade of the Retain software you are strongly advised to manually back up all the files mentioned in this article before performing the upgrade.

Note on backing up during the nightly maintenance cycle:

In Retain 4.0.3 and higher the indexes are optimized during maintenance every night. This may take a hours after an upgrade. During optimization the index directory may grow by 2-3 times as temporary files are created and removed. Backing up during this time is not recommended.

General Maintenance

There are a few items of manual maintenance you need to do occasionally. Annually is usually sufficient.

- ♦ Remove **old logs** from the logs directory (Linux)/opt/beginfinite/retain/Tomcat[version]/logs or (Windows) Program Files/beginfinite/retain/Tomcat[version]/logs

- ♦ Remove **old deletion reports** from the archive directory. The file location can be found under Retain Web console | Server Configuration | Storage tab. If it is not under the base storage path, you may need to select Advanced settings and temporarily disable “Derive all file locations from above base path?”
- ♦ Remove **old exports** from the exports directory. The file location can be found under Retain Web console | Server Configuration | Storage tab. If it is not under the base storage path, you may need to select Advanced settings and temporarily disable “Derive all file locations from above base path?”

Un-installing Retain

To uninstall Retain, use the following general procedure. Actual locations may vary according to your specific setup, storage location, and host operating system.

Linux

1. Shut Down Tomcat: “service retain-tomcat stop”
2. Shut Down Apache: “service apache2 stop”
3. (Optional) Remove the data storage files
Can be: /var/opt/beginfinite/retain. See the Retain Administration Guide section on storage to see where your data actually is placed.
4. Remove the program files
Can be: /opt/beginfinite/retain
5. Remove the RetainWorker.xml, RetainServer.xml, RetainRouter.xml, and RetainStatsServer.xml from Tomcat
Can be: /opt/beginfinite/retain/tomcat/conf/Catalina/localhost
6. Remove the directories under tomcat/work (but NOT work itself)
“rm -r /var/cache/retain-tomcat/work/*”
7. Remove references to Retain in httpd.conf
Can be: /etc/apache2/conf.d/retain-apache.conf
8. Remove tomcat service file: “rm /etc/init.d/retain-tomcat”
9. If Apache and Tomcat were not removed, restart them both to verify that they load without problems.

Windows

1. Shut down Tomcat service
2. Remove Retain Tomcat service
Open a terminal as admin and type: “sc delete tomcat”
3. Remove the program files
Can be: C:\Program Files\Beginfinite\Retain

4. Remove the environment variables from the registry: RETAIN_CATALINA_HOME, RETAIN_HOME, RETAIN_JAVA_HOME, RETAIN_JAVA_VERSION, and RETAIN_JRE_HOME
5. (Optional) Remove the data storage files
Can be: C:\Retain
6. (Optional) Remove SQL Database, SQL Server, Apache or IIS

Installing Other Retain Components on Linux

- ♦ [“Deploying Production-Use Worker Agents on Linux” on page 49](#)
- ♦ [“Installing a Retain Message Router on Linux” on page 50](#)

Deploying Production-Use Worker Agents on Linux

For all but small, all-in-one installations, best practice dictates having a Worker installed on each email, messaging, or other targeted system as applicable. For more information, see [“Worker Locations” in *OpenText Retain CE 23.4: Planning*](#).

Installing Worker Agents

The Linux installer lets you install additional workers, one at a time.

- 1 Make sure the email or other server meets the [“Retain Prerequisites for Linux Servers” on page 22](#).
- 2 Prepare the Retain installation software on the server as instructed in [“Downloading and Preparing the Retain Installation Files on Linux” on page 22](#).
- 3 At the terminal prompt, enter the appropriate command for the worker instance you are installing on the server:

3a First worker on server:

```
./RetainInstall.sh
```

3b Each additional worker:

```
./RetainInstall.sh addworker
```

- 4 Accept the license agreement.
Type `q` to go directly to the acceptance options.
- 5 Acknowledge the system requirements by pressing Enter.
- 6 (First Worker only) By typing `n` or `y` as appropriate, choose to install only a Worker.
- 7 (Additional Workers only) Enter the number (1-9) of the Worker agent you wish to install. You can install workers in any order.

If you mistakenly enter a number that you have previously entered, before the install finishes, it asks whether you want to keep the same configuration, overwrite the configuration, or quit the installation.
- 8 For the Worker installation location, you can either confirm the standard install location (`/opt/beginfinite/retain`), change the installation path, or quit the installation.

- 9 For the Worker log file location, you can choose to keep the default log location at `/var/logs` or to store the log files in `/opt/beginfinite/retain/tomcat/logs`.
There is a separate log file for each worker, found in `/var/log/retain-tomcat/RetainWorkerN.yyyy-mm-dd.log` unless otherwise specified for this worker.
- 10 (First Worker only) The install checks for JDK 17 as described in [“Access to the appropriate JDK running on the system:” on page 22](#).
- 11 Choose to run the `retain-tomcat` process on start-up or not.

NOTE: This choice affects Tomcat start-up for the server and any workers that you installed previously, not just the worker you are currently installing.

The installer completes the Worker configuration, displays information about accessing the worker in a browser, and provides some brief troubleshooting tips.

Creating Worker Web Objects and Downloading Worker Bootstrap Files

After installing the Worker Agents for your Retain deployment, you need to connect them to the Retain Server by creating a Worker Web Object for each of them and downloading their respective bootstrap files.

- 1 After installing and acknowledging the location of the documentation, the installer shows you how to access the Workers that were just installed.
- 2 Using the password you set during the installation, log into the Retain web console as `admin`.
- 3 Create a new Worker and download the Bootstrap for each new Worker you installed. You may save it with a different name to organize it.
- 4 Browse to the new Worker at `http://[ServerAddress]/RetainWorkerN`, where *N* is the number of the worker you just installed.
- 5 Upload the bootstrap.
- 6 Click Continue and log in to the worker.
- 7 Check the friendly name that it is the one you expect.

Installing a Retain Message Router on Linux

Install the Router on a separate Linux server in the DMZ to allow devices outside your network to archive to the Retain Server without exposing the server directly to the Internet.

- 1 Make sure the server meets the [“Retain Prerequisites for Linux Servers” on page 22](#).
- 2 Prepare the Retain installation software on the server as instructed in [“Downloading and Preparing the Retain Installation Files on Linux” on page 22](#).
- 3 If a previous version of Java was installed via YaST, tomcat may fail to start. Uninstall the existing Java with YaST and unset the `JRE_HOME` path (`unset JRE_HOME`).
- 4 Run the installer. Enter the following command: `./RetainInstall.sh`
- 5 When selecting the components to install. Select yes to "Install Retain Message Router" only.
- 6 Finish the install as normal.
- 7 Create a 10 GB data directory for the Router to use to temporarily use to store messages until they can be transferred to the Retain Server.

NOTE: The Storage Path must not be the same as the Mobile Module Data path.

- 8 Configure the Router in the Retain Server console under Configuration | Router Configuration. See [“Retain Message Router Configuration Page”](#) in *OpenText Retain CE 23.4 : Configuration and Administration*.
- 9 The Router can be accessed by browsing to (case-sensitive): `http://[IPAddress or HostName]/RetainRouter`.

Installing Other Retain Components on Windows

- ♦ [“Installing Additional Retain Workers on Windows”](#) on page 51
- ♦ [“Installing a Retain Message Router on Windows”](#) on page 53

Installing Additional Retain Workers on Windows

Typically, one Worker Agent is installed on the Retain Server, but it may make sense for your system to use multiple workers.

One design option is to place a Worker Agent on each post office server, that would save network bandwidth as only new messages would be transmitted. Another option is to place multiple worker agents on a dedicated worker server.

Installing a worker agent is much simpler than installing the entire Retain server system. It only requires installing the web server and the worker agent software. It uses the same installer as above.

Prerequisite

Install the web server (IIS with ISAPI filter, as above). [“Installing a Web Server”](#) on page 10

Overview

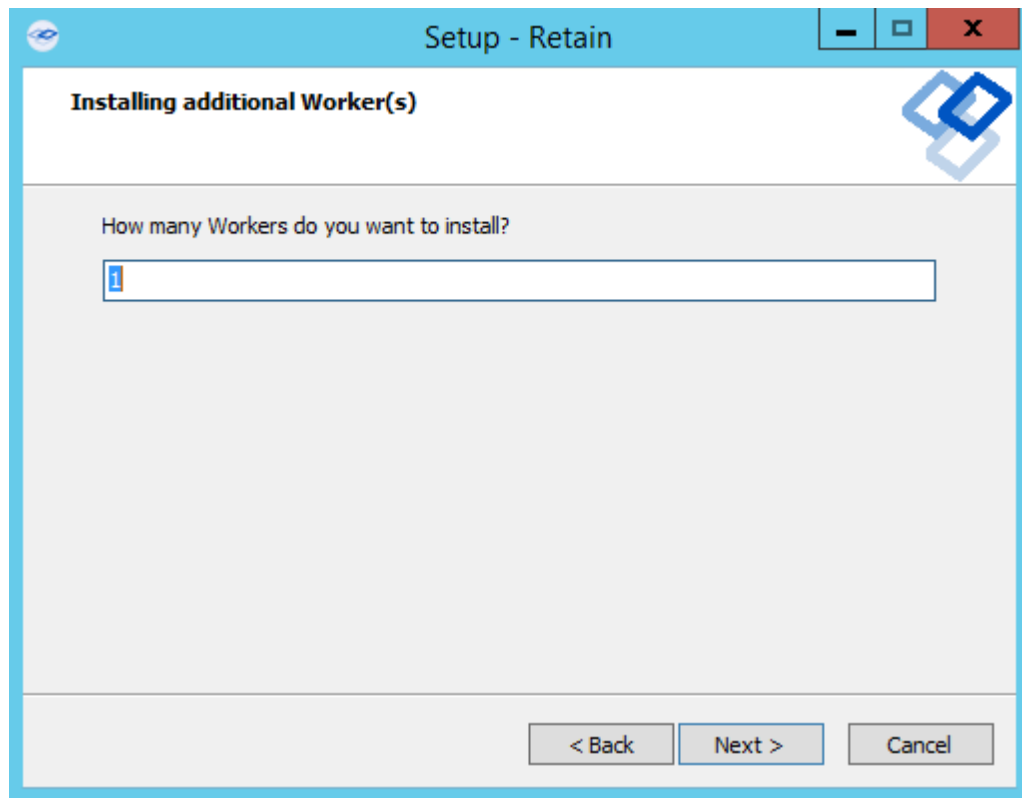
In larger email systems, it can take a long time to dredge all the users especially if the users are on multiple mail servers. You can install multiple workers that can run in parallel to speed up the archiving process. We generally recommend one worker per mail server. The Retain installer can install up to 10 workers on a single server. We recommend an additional 1GB for RAM per worker. Workers are accessed by browsing to `http://[IPAddress or HostName]/RetainWorkerN`

The Retain installer allows you to install up to nine workers at once.

Procedure

- 1 Download and prepare the software on the Windows server as outlined in [“Downloading and Preparing the Retain Windows Installation Source Files”](#) on page 24.
- 2 Run the RetainInstall.exe and install at least one Worker or upgrade the existing installation, if you haven't already done so.
- 3 From the command line (run as Administrator), type `RetainInstall.exe /AddWorker` to start the installer in Add Worker Mode.
- 4 Acknowledge the requirements.

- 5 Accept the license agreement.
- 6 Confirm the install location of Retain.
- 7 Enter the number (1-9) of Worker agents to install. They are installed in numerical order (e.g. RetainWorker, RetainWorker1, RetainWorker2..., RetainWorker9).



- 8 Confirm which webserver is installed.
- 9 Install the Worker agent software. After installing and acknowledging the location of the documentation the installer shows you how to access the Workers that were just installed.
- 10 Log into the Retain web console as admin
- 11 Create a new Worker and download the Bootstrap for each new Worker you installed. You may save it with a different name to organize it.
- 12 Browse to the new Worker at [http://\[ServerAddress\]/RetainWorkerN](http://[ServerAddress]/RetainWorkerN) where N is the number of the worker you just installed.
- 13 Upload the bootstrap.
- 14 Click Continue and login to the worker.
- 15 Check the friendly name that it is the one you expect.

There is a separate log file for each worker, found in *C:\Program Files\Beginfinite\Retain\Tomcat\logs\RetainWorkerN.yyyy-mm-dd.log* unless otherwise specified in Configure Tomcat.

Installing a Retain Message Router on Windows

The Retain Message Router allows devices outside your network to archive to the Retain Server without exposing the server directly to the Internet. The Router sits in your network's DMZ and routes items to the Retain Server.

The Router should be installed on a server other than the Retain server itself.

This is much simpler than installing the entire Retain server system. It only requires installing the webserver and the Router agent software. It uses the same installer as above.

Prerequisites:

- ♦ Install the web server (IIS with ISAPI filter, as above).
- ♦ Make sure that the Router server can connect to the Retain Server.

Install:

- 1 Download and prepare the software on the Windows server as outlined in [“Downloading and Preparing the Retain Windows Installation Source Files”](#) on page 24.
- 2 Extract the archive.
- 3 Run the installer, RetainInstall.exe, as above.
- 4 When selecting the components to install. Select "Message Router" only.
- 5 Finish the install as normal.
- 6 Create a 10 GB data directory for the Router to use to temporarily store messages until they can be transferred to the Retain Server.

NOTE: The Storage Path must not be the same as the Mobile Module Data path.

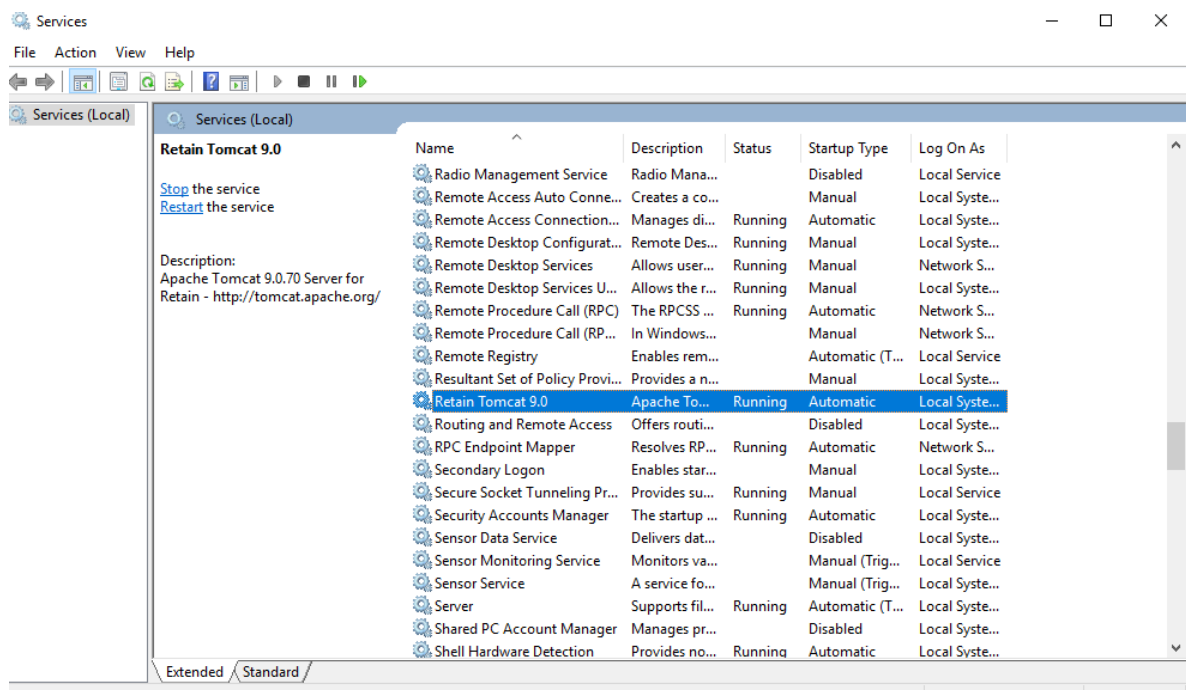
- 7 Configure the Router in the Retain Server console under Configuration | Router Configuration. See [“Retain Message Router Configuration Page”](#) in *OpenText Retain CE 23.4 : Configuration and Administration*.
- 8 The Router can be accessed by browsing to `http://[IPAddress or HostName]/RetainRouter`.

Starting and Stopping the Retain Server

To start, stop, or restart Retain, you must start, stop, or restart Tomcat.

Windows

In Windows, Retain runs as a service. Open Services, select the Retain service then start, stop, or restart that service.



Linux

Use the following commands at the terminal prompt to start and stop Tomcat:

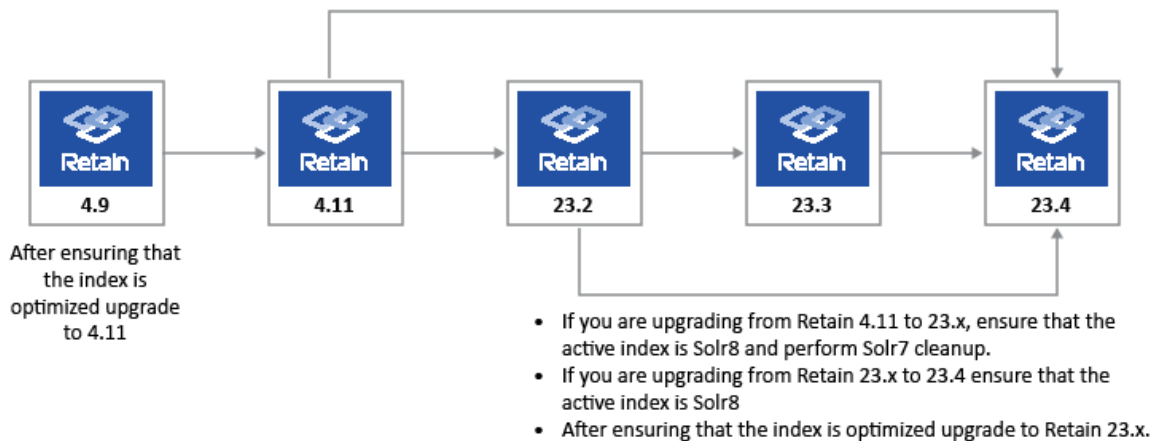
```
systemctl start retain-tomcat.service
systemctl stop retain-tomcat.service
systemctl restart retain-tomcat.service
systemctl status retain-tomcat.service
```

2 Upgrading to Retain 23.4

The following is a graphical overview of the upgrade path to Retain 23.4.

IMPORTANT: The supported path is from Retain 4.11 or later to 23.4.

- Beginning with 23.4, Solr 9 is supported. For more information see the [Updating to the Solr 9 Indexing Engine](#) section in the [OpenText Retain CE 23.4: Installation and Upgrade](#) guide.
 - If you are using Retain 4.11 or 4.11.0.1, before upgrading to 23.4 ensure that Solr 8 is the Active Index Engine and Solr 7 cleanup is performed.
 - On the Retain 23.4 upgraded setup, the zookeeper path by default will be on the base path. For example,
Linux: `/var/opt/beginfinite/retain`
Windows: `\Retain\zookeeper`
-



- Before you start upgrading, complete the instructions in [“Preparing to Upgrade to 23.4”](#) on [page 56](#).

Use the following instructions to upgrade to Retain 23.4.

- [“Preparing to Upgrade to 23.4”](#) on [page 56](#)
- [“Upgrading from 23.2 or later to 23.4”](#) on [page 58](#)
- [“Upgrading from 4.11 to 23.4”](#) on [page 64](#)

Preparing to Upgrade to 23.4

Prerequisites for Upgrading to 23.4

Before starting the upgrade processes, OpenText recommends that you make sure you have the requirements for a Retain 23.4 system, as outlined in “[System Requirements](#)” in *OpenText Retain CE 23.4: Planning*.

Installing Java on a Server with no Internet Connection

By default, the Retain installation program uses an Internet connection to download a specific version of Java for each version of Retain. If the Retain server is not connected to the Internet, you must prepare the server with a workaround beforehand. Otherwise, the installation fails.

The following sections outline the preparation steps for each Retain version in the supported upgrade path as well as for installing the current Retain release.

- ♦ “[Linux Servers](#)” on page 56
- ♦ “[Windows Servers](#)” on page 57

Linux Servers

Prepare your Linux Retain server by using the information in the row that matches your target version.

- 1 On a workstation with an Internet connection, use the links in the following table to download the linked Java version that applies to your upgrade target. Then refer to the Action column for further instructions.

Retain Platform and Version	Download and Copy These Files to Each Retain Server	Action
Linux 4.11	OpenJDK11U-jdk_x64_linux_hotspot_11.0.16+8.tar.gz	<ol style="list-style-type: none">1. When prompted about the missing JDK file, select option 3 and enter the path to the folder containing the file that you previously copied to the server.2. Continue with the upgrade process.
Linux 23.2	OpenJDK11U-jdk_x64_linux_hotspot_11.0.17+8.tar.gz	<ol style="list-style-type: none">1. When prompted about the missing JDK file, select option 3 and enter the path to the folder containing the file that you previously copied to the server.2. Continue with the upgrade process.
Linux 23.3 and 23.4	OpenJDK17U-jdk_x64_linux_hotspot_17.0.6_10.tar.gz	<ol style="list-style-type: none">1. When prompted about the missing JDK file, select option 3 and enter the path to the folder containing the file that you previously copied to the server.2. Continue with the upgrade process.

Windows Servers

Prepare your Windows Retain server by using the information in the row that matches your target version.

- 1 On a workstation with an Internet connection, use the links in the following table to download the linked Java versions that apply to your upgrade path. Then refer to the Action column for further instructions.

Retain Version	Download and Copy These Files to Each Server	Action
Retain 4.11	OpenJDK11U-jdk_x64_windows_hotspot_11.0.16_8.zip	1. Extract the files to this location: C:\Program Files\Beginfinite\Retain\Java
Retain 23.2	OpenJDK11_x64_windows_jdk-11.0.17_8.zip	1. Extract the files to this location: C:\Program Files\Beginfinite\Retain\Java
Retain 23.3 and 23.4	OpenJDK17_x64_windows_jdk-17.0.6_10.zip	1. Extract the files to this location: C:\Program Files\Beginfinite\Retain\Java

- 2 After extracting the files, before running the Retain installer, edit the system's Environment Variables to reflect the values indicated for the version you are upgrading to.

Retain Target Version	Variable Name	Value
Retain 4.11	RETAIN_JRE_HOME	C:\Program Files\Beginfinite\Retain\Java\jdk-10.0.2+13
	RETAIN_JAVA_HOME	C:\Program Files\Beginfinite\Retain\Java\jdk-11.0.16+8
	RETAIN_JAVA_VERSION	jdk-11.0.16+8
	RETAIN_JRE_HOME	C:\Program Files\Beginfinite\Retain\Java\jdk-11.0.16+8
Retain 23.2	RETAIN_JAVA_HOME	C:\Program Files\Beginfinite\Retain\Java\jdk-11.0.17+8
	RETAIN_JAVA_VERSION	jdk-11.0.17+8
	RETAIN_JRE_HOME	C:\Program Files\Beginfinite\Retain\Java\jdk-11.0.17+8
Retain 23.3 and 23.4	RETAIN_JAVA_HOME	C:\Program Files\Beginfinite\Retain\Java\jdk-17.0.6_10
	RETAIN_JAVA_VERSION	jdk-17.0.6_10
	RETAIN_JRE_HOME	C:\Program Files\Beginfinite\Retain\Java\jdk-17.0.6_10

- 3 When you run the Retain installer, it recognizes that Java is already installed.

Upgrading from 23.2 or later to 23.4

Use the instructions in the following sections to upgrade from Retain 23.2 or later to Retain 23.4.

- ♦ [“Preparing to Upgrade to 23.4” on page 58](#)
- ♦ [“Upgrading to 23.4 \(SLES\)” on page 58](#)
- ♦ [“Upgrading to 23.4 \(Windows\)” on page 59](#)
- ♦ [“Updating to the Solr 9 Indexing Engine” on page 61](#)

Preparing to Upgrade to 23.4

Table 2-1 *Preparing for Retain 23.4*

Task	Details
Ensure that the Retain server is connected to the Internet	<ol style="list-style-type: none">1. Verify that the Retain server is connected to the Internet, so that the installer can install OpenJDK 17. <p>If your server isn't connected to the Internet, see “Installing Java on a Server with no Internet Connection” on page 56.</p>
Ensure that SMTP Is Working in Retain	<ol style="list-style-type: none">1. The installer must be able to email status messages to the configured SMTP account. Otherwise, it will stop and display an error message.
Get the 23.4 software	<ol style="list-style-type: none">1. Using your OpenText Customer Center account, download the latest version of the Retain installation.zip file.2. Copy the file and unzip/extract it on the following:<ul style="list-style-type: none">♦ The Retain server that you are upgrading.♦ Every server that is running a Retain Worker or other component.3. (SLES) Open a terminal, navigate to the extracted folder, run the following command to make the script files executable: <code>chmod +x *.sh</code>
Ensure Adequate RAM	<ol style="list-style-type: none">1. Make sure that the Retain server has at least 12 GB RAM.
Back up the Database and the Retain Server	<p>The upgrade should run smoothly. However, best practice always dictates backing up systems before making major changes.</p> <ol style="list-style-type: none">1. Back up your database and the Retain server immediately before starting the upgrade.

Upgrading to 23.4 (SLES)

If you are upgrading Retain on a Windows server, go to [“Upgrading to 23.4 \(Windows\)” on page 59](#)

Table 2-2 Upgrading to 23.4 on SLES

Installation Section	Details
Stop Retain before Upgrading	<ol style="list-style-type: none">1. On the Retain server, open a terminal prompt.2. Stop Retain by stopping the Apache Tomcat service. For example, on SLES 12 or SLES 15 enter the following command: <code>systemctl stop retain-tomcat.service</code>
Run the Retain 23.4 Installation	<ol style="list-style-type: none">1. At the terminal prompt, navigate to the folder that you prepared in “Get the 23.4 software” on page 58, then enter the following command: <code>./RetainInstall.sh</code>
License Agreement	<ol style="list-style-type: none">1. Scroll through the license agreement, then type 1 and press Enter.
Software and RAM Requirements	<p>The Linux install lists the 23.4 software and RAM requirements.</p> <ol style="list-style-type: none">1. Press Enter to continue.
Retain Components Selection Page	<p>The install displays the Retain components that are already installed on the server.</p> <ol style="list-style-type: none">1. If you want to upgrade only the listed components, enter 1.2. If you want to also install additional components, enter 2, then enter <code>y</code> for the components you wish to add to the server.
Pre-requirements Status	<p>The install checks for OpenJDK 17 and an updated version of Tomcat 9. If they are not installed, it installs and configures them for Retain.</p> <p>NOTE: The Java and Tomcat verification/installation process can take a while, so be patient while the installation works in the background.</p> <p>The installation process extracts and installs Retain 23.4.</p> <p>Next, it starts the system processes that Retain requires.</p> <p>Finally, a message reminds you to consult the documentation.</p> <ol style="list-style-type: none">1. When the system prompt displays, wait a few moments to make sure all the components are running.

Upgrading to 23.4 (Windows)

If you are upgrading Retain on a SLES server, go to [“Upgrading to 23.4 \(Windows\)” on page 59](#)

Table 2-3 Upgrading to 23.4 on Windows

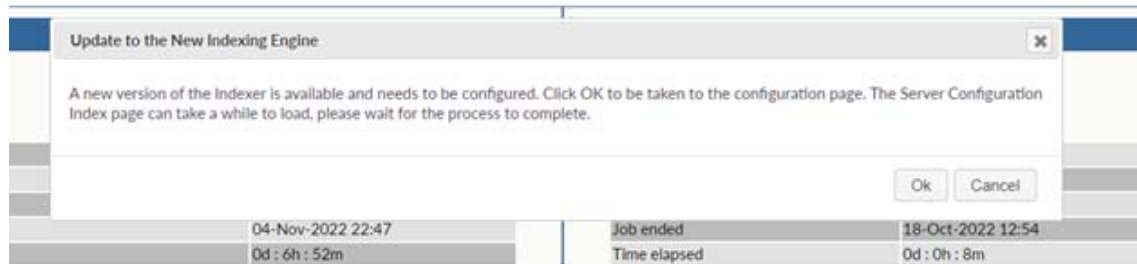
Dialog/Section	Details
Stop Retain before Upgrading	<ol style="list-style-type: none">1. On the Retain server, click Start > Administrative Tools > Services (or the equivalent on your version of Windows Server).2. Stop Retain by stopping the Retain Tomcat service.
Run the Retain 23.4 Installation	<ol style="list-style-type: none">1. In the folder that you prepared in “Get the 23.4 software” on page 58, right click <code>RetainInstall.exe</code> and select Run as Administrator.

Dialog/Section	Details
Welcome to the Retain Setup Wizard	<ol style="list-style-type: none"> 1. Click Next.
Software Requirements	<p>The install lists the 23.4 software and hardware requirements along with the software that it will install</p> <ol style="list-style-type: none"> 1. Click Next.
License Agreement	<ol style="list-style-type: none"> 1. Accept the agreement and click Next.
Select Destination Location	<ol style="list-style-type: none"> 1. If you want to install the upgraded Retain components in a non-default location, use the Browse button to change the path. 2. Click Next.
Retain Components Selection Page	<p>The install displays the components that are already installed on the server.</p> <ol style="list-style-type: none"> 1. If desired, you can select additional components for installation. 2. Click Next.
Pre-requirements Status	<ol style="list-style-type: none"> 1. The install checks for OpenJDK 17 and an updated Tomcat 9. If they are not installed, it indicates that they will be. 2. Click Next. <p>If needed, the install runs the OpenJDK 17 installation and updates Tomcat 9.</p> <p>Click through any security alerts or other dialogs to allow the process to run to completion.</p>
Information	<p>The install reminds you to consult the documentation.</p> <ol style="list-style-type: none"> 1. Wait a few moments to make sure all components have finished installing. 2. Click Next.
General Information	<p>A message shows the Retain access URL.</p> <ol style="list-style-type: none"> 1. Click Next.
Completing the Retain Setup Wizard	<ol style="list-style-type: none"> 1. Click Finish.

Updating to the Solr 9 Indexing Engine

After Retain 23.4 is updated, update the Indexing Engine to Solr 9. You can do this at any time after the upgrade, but if you have Manage Server rights, you are prompted to perform the Index Engine update.

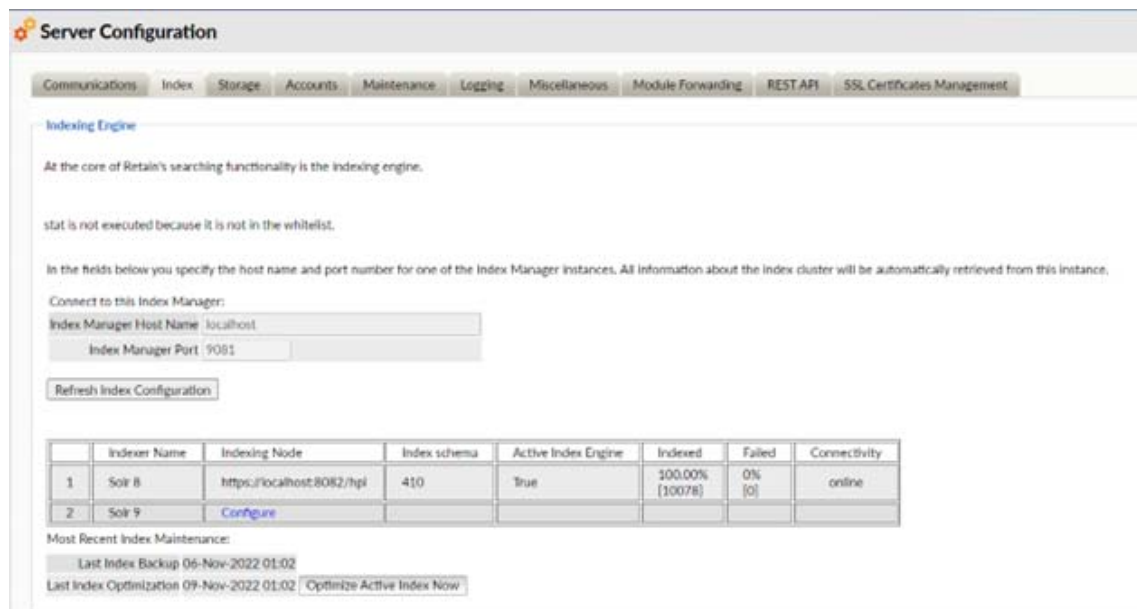
- 1 In Admin Console, when it is prompted to update the indexing engine, click **Ok**.



NOTE: It can take some time for the Server Configuration page to load.

- 2 In **Server Configuration > Index**, click **Configure** in the **Indexing Node** column.

IMPORTANT: When you configure Solr 9, all delete jobs are disabled until Solr 8 clean-up is completed.



- 3 You are prompted to select a Port and Index Path. The default Port is 1 more than the port used for Solr 9. For example, if the port for Solr 8 index engine is 8081, then on upgrading Retain, the default port for Solr 9 will be 8082. The index path is the new path for index files. If the index directory is using a symlink, another symlink needs to be created for the new index folder so that the new index files are stored in an appropriate storage location.

NOTE:

- ♦ If you are running Retain on a Windows Server, Solr 9 restricts the use of Windows SMB shares on the UNC format, such as `\\myhost\myshare\mypath`. For the indexer storage path, you can use a drive and mount it later. As a workaround, map the storage path in UNC format to a symbolic link folder on the local drive:
 1. On the server where Retain is running, run the following command in the Windows Command Prompt: `mklink /D C:\myLink \\IP address\c\Retain\Index` In the above command, `C:\myLink` corresponds to the linked folder on the local drive and `\\IP address\c\Retain\Index` corresponds to the storage path in UNC format.
 2. Ensure that the Retain Tomcat service is running as a user who has access to the shared folder. If not, please update the service and restart Tomcat.
- ♦ If you are running Retain on a Linux Server, using a different path than the default, you need to make sure the ownership is set to `tomcat:www`.

A disk check will run to make sure that there is enough space on your server to migrate the indexer. The free space needed for the migration is 3 times the size of the current index. The recommended free space is 3.5 times the current index size.

The screenshot shows the Retain configuration interface. On the left, there is a 'Refresh Index Configuration' button and a table with the following data:

	Indexer Name	Indexing Node
1	Solr 8	https://localhost:8081/h
2	Solr 9	Configure

Below the table, it says 'Most Recent Index Maintenance:' followed by 'Last Index Backup (never)' and 'Last Index Optimization 20-Jul-2023 01:02:02' with an 'Optimize' button.

On the right, a dialog box titled 'Update to the New Indexing Engine' is open. It contains the following text: 'When SOLR9 is configured, all deletion jobs and individual message deletions will be disabled until the index migration completes and SOLR8 has been cleaned off the system. If you wish to proceed please enter a port for the Index manager/Retain core. The port cannot be the current port 8081.' Below this text, there is a 'Port:' label with a text box containing '8082'. There is also an 'Index Path:' label with a text box containing '/var/opt/beginfinite/retain/index9'. At the bottom right of the dialog box are 'Ok' and 'Cancel' buttons.

When the check passes, Solr 9 is configured and starts indexing. At this point, you can continue with the next steps to switch to Solr 9 or you can wait for Solr 9 to finish indexing.

IMPORTANT: Once Solr 9 is configured, index optimization and backup are disabled until Solr 8 clean-up is completed.

- 4 After Solr 9 is configured, click **Switch to Solr 9** and restart the Tomcat service.

IMPORTANT: If you switch to Solr 9 when the re-indexing is in progress, the search results in Retain will not be accurate.

Server Configuration

Communications Index Storage Accounts Maintenance Logging Miscellaneous Module Forwarding REST API SSL Certificates Management

Indexing Engine

At the core of Retain's searching functionality is the Indexing engine.

start is not executed because it is not in the whitelist.

In the fields below you specify the host name and port number for one of the Index Manager instances. All information about the index cluster will be automatically retrieved from this instance.

Connect to this Index Manager:

Index Manager Host Name: localhost

Index Manager Port: 9081

Refresh Index Configuration

	Indexer Name	Indexing Node	Index schema	Active Index Engine	Indexed	Failed	Connectivity
1	Solr 8	https://localhost:8082/hpi Clean up Solr 8	410	True	100.00% [10078]	0% [0]	online
2	Solr 9	https://localhost:8083/hpi Switch to Solr 9	234	False	1.84% [185]	0% [0]	online

[Re-index All Items](#)

Most Recent Index Maintenance:

Last Index Backup 06-Nov-2022 01:02

Last Index Optimization 09-Nov-2022 01:02 [Optimize Actual Indexes Now](#)

Ensure that Solr 9 works as expected. If not, select **Re-index All Items** and switch back to Solr 8.

- 5 Click **Clean up Solr 8**.

IMPORTANT: This deletes Solr 8 and all the Solr 8 data from the system. Before you perform Solr 8 clean up, ensure that the Solr 9 is working as expected.

Indexing Engine

	Indexer Name	Indexing Node	Index schema	Active Index Engine	Indexed	Failed	Connectivity
1	Solr 8	https://localhost:8082/hpi Clean up Solr 8	410	False Switch to Solr 8	100.00% [10078]	0% [0]	online
2	Solr 9	https://localhost:8083/hpi	234	True	18.41% [1855]	0% [0]	online

[Re-index All Items](#)

Most Recent Index Maintenance:

Last Index Backup 06-Nov-2022 01:02

Last Index Optimization 09-Nov-2022 01:02 [Optimize Actual Indexes Now](#)

- 6 Click **Ok** to confirm.

Clean Up Solr 8

The cleanup removes the SOLR8 index from the system, and it cannot be reversed. After the SOLR8 index is removed, you have to restart the Tomcat service. Do you want to proceed?

Ok Cancel

Upgrading from 4.11 to 23.4

Use the instructions in the following sections to upgrade from Retain 4.11 or later to Retain 23.4.

- ♦ [“Preparing to Upgrade to 23.4” on page 64](#)
- ♦ [“Upgrading to 23.4 \(SLES\)” on page 64](#)
- ♦ [“Upgrading to 23.4 \(Windows\)” on page 65](#)

Preparing to Upgrade to 23.4

Table 2-4 *Preparing for Retain 23.4*

Task	Details
Ensure that the Solr 8 is the Active Index Engine and Solr 7 cleanup is performed.	Beginning with 23.4 only Solr 9 is supported. For more information, see “Updating to the Solr 9 Indexing Engine” on page 61 .
Ensure that the Retain server is connected to the Internet	<ol style="list-style-type: none">1. Verify that the Retain server is connected to the Internet, so that the installer can install OpenJDK 17. <p>If your server isn’t connected to the Internet, see “Installing Java on a Server with no Internet Connection” on page 56.</p>
Ensure that SMTP Is Working in Retain	<ol style="list-style-type: none">1. The installer must be able to email status messages to the configured SMTP account. Otherwise, it will stop and display an error message.
Get the 23.4 software	<ol style="list-style-type: none">1. Using your OpenText Customer Center account, download the latest version of the Retain installation .zip file.2. Copy the file and unzip/extract it on the following:<ul style="list-style-type: none">♦ The Retain server that you are upgrading.♦ Every server that is running a Retain Worker or other component.3. (SLES) Open a terminal, navigate to the extracted folder, run the following command to make the script files executable: <pre>chmod +x *.sh</pre>
Ensure Adequate RAM	<ol style="list-style-type: none">1. Make sure that the Retain server has at least 12 GB RAM.
Back up the Database and the Retain Server	<p>The upgrade should run smoothly. However, best practice always dictates backing up systems before making major changes.</p> <ol style="list-style-type: none">1. Back up your database and the Retain server immediately before starting the upgrade.

Upgrading to 23.4 (SLES)

If you are upgrading Retain on a Windows server, go to [“Upgrading to 23.4 \(Windows\)” on page 59](#)

Table 2-5 Upgrading to 23.4 on SLES

Installation Section	Details
Stop Retain before Upgrading	<ol style="list-style-type: none">1. On the Retain server, open a terminal prompt.2. Stop Retain by stopping the Apache Tomcat service. For example, on SLES 12 or SLES 15 enter the following command: <code>systemctl stop retain-tomcat.service</code>
Run the Retain 23.4 Installation	<ol style="list-style-type: none">1. At the terminal prompt, navigate to the folder that you prepared in “Get the 23.4 software” on page 58, then enter the following command: <code>./RetainInstall.sh</code>
License Agreement	<ol style="list-style-type: none">1. Scroll through the license agreement, then type 1 and press Enter.
Software and RAM Requirements	<p>The Linux install lists the 23.4 software and RAM requirements.</p> <ol style="list-style-type: none">1. Press Enter to continue.
Retain Components Selection Page	<p>The install displays the Retain components that are already installed on the server.</p> <ol style="list-style-type: none">1. If you want to upgrade only the listed components, enter 1.2. If you want to also install additional components, enter 2, then enter <code>y</code> for the components you wish to add to the server.
Pre-requirements Status	<p>The install checks for OpenJDK 17 and an updated version of Tomcat 9. If they are not installed, it installs and configures them for Retain.</p> <p>NOTE: The Java and Tomcat verification/installation process can take a while, so be patient while the installation works in the background.</p> <p>The installation process extracts and installs Retain 23.4.</p> <p>Next, it starts the system processes that Retain requires.</p> <p>Finally, a message reminds you to consult the documentation.</p> <ol style="list-style-type: none">1. When the system prompt displays, wait a few moments to make sure all the components are running.

Upgrading to 23.4 (Windows)

If you are upgrading Retain on a SLES server, go to [“Upgrading to 23.4 \(SLES\)” on page 58](#)

Table 2-6 Upgrading to 23.4 on Windows

Dialog/Section	Details
Stop Retain before Upgrading	<ol style="list-style-type: none">1. On the Retain server, click Start > Administrative Tools > Services (or the equivalent on your version of Windows Server).2. Stop Retain by stopping the Retain Tomcat service.
Run the Retain 23.4 Installation	<ol style="list-style-type: none">1. In the folder that you prepared in “Get the 23.4 software” on page 58, right click <code>RetainInstall.exe</code> and select Run as Administrator.

Dialog/Section	Details
Welcome to the Retain Setup Wizard	<ol style="list-style-type: none"> 1. Click Next.
Software Requirements	<p>The install lists the 23.4 software and hardware requirements along with the software that it will install</p> <ol style="list-style-type: none"> 1. Click Next.
License Agreement	<ol style="list-style-type: none"> 1. Accept the agreement and click Next.
Select Destination Location	<ol style="list-style-type: none"> 1. If you want to install the upgraded Retain components in a non-default location, use the Browse button to change the path. 2. Click Next.
Retain Components Selection Page	<p>The install displays the components that are already installed on the server.</p> <ol style="list-style-type: none"> 1. If desired, you can select additional components for installation. 2. Click Next.
Pre-requirements Status	<ol style="list-style-type: none"> 1. The install checks for OpenJDK 17 and an updated Tomcat 9. If they are not installed, it indicates that they will be. 2. Click Next. <p>If needed, the install runs the OpenJDK 17 installation and updates Tomcat 9.</p> <p>Click through any security alerts or other dialogs to allow the process to run to completion.</p>
Information	<p>The install reminds you to consult the documentation.</p> <ol style="list-style-type: none"> 1. Wait a few moments to make sure all components have finished installing. 2. Click Next.
General Information	<p>A message shows the Retain access URL.</p> <ol style="list-style-type: none"> 1. Click Next.
Completing the Retain Setup Wizard	<ol style="list-style-type: none"> 1. Click Finish.

3 Moving Retain to a New Server

- ♦ [“Moving Retain from Windows to Linux” on page 67](#)
- ♦ [“Moving Retain from Linux to Windows” on page 71](#)
- ♦ [“Moving Retain to a Different Windows Server” on page 74](#)
- ♦ [“Moving Retain to a Different Linux Server” on page 77](#)

Moving Retain from Windows to Linux

The easiest method is to re-install everything to the new server and then copy over the archive and configuration files.

These instructions are for moving Retain and maintaining its current version.

- ♦ [“Overview” on page 67](#)
- ♦ [“Preparation” on page 68](#)
- ♦ [“Moving Retain” on page 68](#)

Overview

To move Retain, you must move 3 things:

- ♦ **Configuration files.** Move the ASConfig.cfg, which is stored in a directory off of your Retain installation:

Linux default: /opt/beginfinite/retain/RetainServer/WEB-INF/cfg

Windows default: [drive]:\Program Files\Beginfinite\Retain\RetainServer\WEB-INF\cfg

Indexer configuration files (the entire directory's contents):

Linux default: /opt/beginfinite/retain/RetainServer/WEB-INF/solrweb/WEB-INF/cfg

Windows default: [drive]:\Program Files\Beginfinite\Retain\RetainServer\WEB-INF\solrweb\WEB-INF\cfg

- ♦ **Database.** Unless it's on a separate server and you are not moving it.
- ♦ **Storage.** In summary, the storage directories to be copied are:
 - ♦ archive (required)
 - ♦ backup (optional, although we recommend you skip this since having it on the old server is backup enough until the next Retain maintenance performs a backup on the new server)
 - ♦ ebdb (optional)
 - ♦ export (optional)
 - ♦ index (required in Retain 4, recommended for Retain 3)

- ♦ license (optional)
- ♦ xml (optional)

NOTE: If you've added storage partitions in the Retain admin web interface, you must make sure all of those are copied correctly, too.

Preparation

1. Note where your Retain storage directory is located.

To determine what that directory is, log into the RetainServer web interface and click on Server Configuration | Storage. The "Base Storage path" is your [Retain storage directory \(https://support.microfocus.com/kb/doc.php?id=7019531\)](https://support.microfocus.com/kb/doc.php?id=7019531).

2. Download Retain to the new server and prepare it for the installation.
 - a. Create the download directory.
 - i. Make the directory for holding the software: `md /software`
 - ii. Change to that directory: `cd /software`
 - b. Download the latest version of Retain on the new server. For Retain 2.x customers, migrate your data to Retain 3.x format first; then proceed with moving Retain

NOTE: You can use the `wget` command to download the software to the Linux server by changing into the software directory you created in step 2.a and running this command: `wget '[url]'`

- i. Get the URL of the most current version of Retain from the [Customer Center](#).
 - ii. Now use that URL with the `wget` command on the Linux server inside the software directory you created.
 - c. Unzip the file and make the script files (.sh) executable.
 - i. `unzip [retain zip file] -d [retain zip filename, excluding the ".zip" at the end]`
 Example: `unzip Retainversion.zip -d retainversion`
 The "-d" option causes it to create Note how we kept the "r" in lowercase following the "-d" option since Linux is case sensitive when changing directories.
 - ii. `chmod +x *.sh`
3. Install Apache2 to the new server.
 - a. Launch YaST | Software Management.
 - b. In the search window, type: Apache2.
 - c. Click on Apache2 (only), click on the Accept button, and accept the defaults.
4. (Optional) If you have edited the default properties files under the `.../RetainWorker/WEB-INF/classes/config`, back up those files and restore them after the final step of the move.

Moving Retain

1. Disable archive jobs and, if applicable, deletion jobs on the old server.

2. For good measure, [shut down Tomcat \(https://support.microfocus.com/kb/doc.php?id=7019531\)](https://support.microfocus.com/kb/doc.php?id=7019531) on the old server.
3. Move the MySQL database if it resides on the Retain server; otherwise, proceed to step #4.
See: "[Moving MySQL Database to Another Server \(https://support.microfocus.com/kb/doc.php?id=7019952\)](https://support.microfocus.com/kb/doc.php?id=7019952)".
4. Install Retain on the new server.
 - a. Change to your Retain software installation directory (i.e., /software/retain3510ga_262)
 - b. Execute the installation script: ./RetainInstall.sh
 *****IMPORTANT*****

 At a certain point of the installation, you are presented the following prompt:
 Will MySQL be running on the same server as Retain?
 1) Yes
 2) No <---- Select this option even if MySQL is running on the same server
 Even if MySQL is running on the same server as Retain, type "2" for "No"; otherwise, it attempts to install and configure MySQL. At this point, you have already installed MySQL and moved your MySQL database to this new server, so selecting option 1 causes problems.
 *DO NOT log into the WEB UI at this point, you could damage the database data that you've just moved.
 - c. [Shut down Tomcat \(https://support.microfocus.com/kb/doc.php?id=7019531\)](https://support.microfocus.com/kb/doc.php?id=7019531) on the new server.
5. Copy the Retain storage directories from the old server to the new server (see step #1 under the "Preparation" section for the location of this directory). WARNING: This step can take days or weeks depending on the data size.
 Because the Windows server is using NTFS as the disk format and Linux something different (ext3, xfs, etc), you'll need to employ an approach where the data on these two distinct disk formats can be read from and written to by the same process.
 One approach is to create a CIFS mount from the Linux box to the Windows server. This requires that you first share the parent directory of the "archive" directory on your Windows server housing Retain. Another approach would be to install NFS services on the new Windows server, share the new storage directories, and mount from the old Linux server to the new shared storage directories.
 Once that is done, you can now [use rsync to copy the files \(https://support.microfocus.com/kb/doc.php?id=7019348\)](https://support.microfocus.com/kb/doc.php?id=7019348) from Retain storage directory on Windows to the new Linux server. To help with this process, you may download and install [Support's utility \(https://support.microfocus.com/kb/doc.php?id=7019279\)](https://support.microfocus.com/kb/doc.php?id=7019279) for copying the files/directories.
 Change to the new archive directory. It should have 256 subdirectories (00 - FF). All those subdirectories must have the ownership of tomcat tomcat.

```
10.1.5.30 - PuTTY
drwxr-xr-x 33 tomcat tomcat 4096 Dec 4 13:41 EB/
drwxr-xr-x 32 tomcat tomcat 4096 Dec 4 13:29 EC/
drwxr-xr-x 29 tomcat tomcat 4096 Dec 4 13:35 ED/
drwxr-xr-x 39 tomcat tomcat 4096 Dec 4 13:29 EE/
drwxr-xr-x 37 tomcat tomcat 4096 Dec 4 13:39 EF/
drwxr-xr-x 37 tomcat tomcat 4096 Dec 4 13:29 F0/
drwxr-xr-x 33 tomcat tomcat 4096 Dec 4 14:07 F1/
drwxr-xr-x 40 tomcat tomcat 4096 Dec 4 13:41 F2/
drwxr-xr-x 30 tomcat tomcat 4096 Dec 4 13:40 F3/
drwxr-xr-x 31 tomcat tomcat 4096 Dec 4 13:41 F4/
drwxr-xr-x 35 tomcat tomcat 4096 Dec 4 13:41 F5/
drwxr-xr-x 29 tomcat tomcat 4096 Dec 8 15:09 F6/
drwxr-xr-x 39 tomcat tomcat 4096 Dec 4 13:40 F7/
drwxr-xr-x 28 tomcat tomcat 4096 Dec 4 13:29 F8/
drwxr-xr-x 31 tomcat tomcat 4096 Dec 4 13:40 F9/
drwxr-xr-x 27 tomcat tomcat 4096 Dec 4 13:40 FA/
drwxr-xr-x 36 tomcat tomcat 4096 Dec 4 13:41 FB/
drwxr-xr-x 25 tomcat tomcat 4096 Dec 4 14:07 FC/
drwxr-xr-x 26 tomcat tomcat 4096 Dec 4 13:29 FD/
drwxr-xr-x 23 tomcat tomcat 4096 Dec 4 13:40 FE/
drwxr-xr-x 32 tomcat tomcat 4096 Dec 4 13:41 FF/
drwxr-xr-x 2 tomcat tomcat 4096 Dec 5 01:02 notify/
-rw-r--r-- 1 tomcat tomcat 21 Dec 8 16:26 test.txt
retain3:/data/retain/archive #
```

Windows does not have a file ownership scheme similar to Linux, so once you've copied the storage directories over, you'll need to set the directory/file ownership and permissions. That process can take almost as much time as copying the directories did but it must be done in order for Retain to be able to read from and write to them. To do this, type: `chown -R tomcat:tomcat [directory]`.

EXAMPLE: `chown -R tomcat:tomcat archive` (performed from the base storage path containing the archive, index, and other Retain storage directories)

6. Copy the configuration files from the old server to the new server and edit the paths referenced in those files to reflect their new locations:
 - a. ASConfig.cfg, located in [drive]:\Program Files\Beginfinite\Retain\RetainServer\WEB-INF\cfg.
 - b. Edit the ASConfig.cfg and change several parameters to reflect the storage paths on the new server. Or, you can start tomcat, logon to the Retain Server web admin console, and change the paths under Server Configuration | Storage. If editing the ASConfig.cfg directly, look for these parameters for the storage paths:
 - ♦ <basepath>
 - ♦ <archivePath>
 - ♦ <xmlPath>
 - ♦ <indexPath>
 - ♦ <backupPath>
 - ♦ <licensePath>
 - ♦ <EBDBPath>
 - ♦ <exportPath>

- c. RETAIN 4 ONLY:
 - i. Edit the path the index directory to reflect its new location by opening the zoo.cfg file in ...\\index\\solrhome\\
 - ii. Copy everything from [drive]:\\RetainServer\\WEB-INF\\solrweb\\WEB-INF\\cfg.
- 7. Start Tomcat on the new server.
- 8. Login to the Retain Server web admin console.
- 9. Replace the existing Worker object. This is for systems where the Worker is on the Retain server or for situations where jobs won't start after moving Retain:
 - a. Create a new worker web object using the instructions in [“Installing and Configuring a Worker”](#) in *OpenText Retain CE 23.4: Archiving Guide*.
 - b. Download the bootstrap file.
 - c. Edit all jobs assigned to the old worker and re-assign them to the new one.
 - d. Delete the old worker object.
 - e. Restart tomcat.
 - f. From a web browser, go to the RetainWorker and upload the new bootstrap.
http://[Retain server IP]/RetainWorker
- 10. If you backed up any of the Retain Worker properties files (see step #5 under the Preparation section), restore those to their respective directories. This does not apply to most customers - this is very rarely done.

Moving Retain from Linux to Windows

The easiest method is to re-install everything to the new server and then copy over the archive and configuration files.

These instructions are for moving Retain and maintaining its current version.

- ♦ [“Overview” on page 71](#)
- ♦ [“Preparation” on page 72](#)
- ♦ [“Moving Retain” on page 73](#)

Overview

To move Retain, you must move 3 things:

- ♦ **Configuration files.** Move the ASConfig.cfg, which is stored in a directory off of your Retain installation:

Linux default: /opt/beginfinite/retain/RetainServer/WEB-INF/cfg

Windows default: [drive]:\\Program Files\\Beginfinite\\Retain\\RetainServer\\WEB-INF\\cfg

Indexer configuration files (the entire directory's contents):

Linux default: /opt/beginfinite/retain/RetainServer/WEB-INF/solrweb/WEB-INF/cfg

Windows default: [drive]:\Program Files\Beginfinite\Retain\RetainServer\WEB-INF\solrweb\WEB-INF\cfg

- ♦ **Database.** Unless it's on a separate server from the Retain server and you are not wanting to move it.
- ♦ **Storage.** In summary, the storage directories to be copied are:
 - ♦ archive (required)
 - ♦ backup (optional, although we recommend you skip this since having it on the old server is backup enough until the next Retain maintenance performs a backup on the new server)
 - ♦ ebdb (optional)
 - ♦ export (optional)
 - ♦ index (required in Retain 4, recommended for Retain 3)
 - ♦ license (optional)
 - ♦ xml (optional)

NOTE: If you've added storage partitions in the Retain admin web interface, you must make sure all of those are copied correctly, too.

Preparation

1. Note where your Retain storage directory is located. To determine what that directory is, log into the RetainServer web interface and click on Server Configuration | Storage. The "Base Storage path" is your [Retain storage directory \(https://support.microfocus.com/kb/doc.php?id=7020655\)](https://support.microfocus.com/kb/doc.php?id=7020655).
2. Download Retain to the new server and prepare it for the installation.
 - a. Prepare the download directory.

We recommend creating a directory called Software on the root of the drive. It is not required and you may store the installation files wherever you desire, but if you do not have a strong preference, storing it at [drive]:\Software makes it easier to find later, especially for technical support.
 - b. Download the latest version of Retain on the new server. For Retain 2.x customers, you'll first want to migrate your data to Retain 3.x format first; then proceed with moving Retain.
 - c. Unzip the file, allowing Windows to create a new subdirectory off of "Software" with the same name as the zip file.

For example, if the zip file were named, "Retain4031ga_48.zip", Windows - by default - creates a subdirectory called "Retain4031ga_48", so that the full path to the installation files becomes [drive]:\Software\Retain4031ga_48.
3. (Optional) [Configure NFS Services \(https://support.microfocus.com/kb/doc.php?id=7020834\)](https://support.microfocus.com/kb/doc.php?id=7020834) on the new Windows server if you want to use Support's Retain Auxiliary Tool Set utility to copy your Retain storage to your new server.

4. [Install/Configure IIS \(https://support.microfocus.com/kb/doc.php?id=7020584\)](https://support.microfocus.com/kb/doc.php?id=7020584) on the new server.
5. (Optional) If you have edited the default properties files under the Retain Worker directory(ies) (.../RetainWorker/classes/config) such as attachment.properties or errors.properties, you may want to back up those files to restore them after the final step of the move.

Moving Retain

1. Disable archive all archive jobs, and if applicable, deletion jobs on the old server.
2. For good measure, [shut down Tomcat \(https://support.microfocus.com/kb/doc.php?id=7019531\)](https://support.microfocus.com/kb/doc.php?id=7019531) on the old server.
3. Move the database if it resides on the Retain server; otherwise, proceed to step #4. For customers using MySQL, reference "[Moving MySQL Database to Another Server \(https://support.microfocus.com/kb/doc.php?id=7019952\)](https://support.microfocus.com/kb/doc.php?id=7019952)".
4. Copy the Retain storage directory from the old server to the new server (see step #1 under the "Preparation" section for the location of this directory).

WARNING: This step can take days or weeks depending on volume.

Because the Windows server is using NTFS as the disk format and Linux something different (ext3, xfs, etc), you'll need to employ an approach where the data on these two distinct disk formats can be read from and written to by the same process.

We recommend that you [install NFS services on the new Windows server \(https://support.microfocus.com/kb/doc.php?id=7020834\)](https://support.microfocus.com/kb/doc.php?id=7020834), share the new storage directories, and mount from the old Linux server to the new shared storage directories.

Once that is done, you can now use rsync to copy the files from Retain storage directory on Linux to the new Windows server. To help with this process, you may download and install Support's utility for copying the archive directory.

5. Install Retain on the new server.
 - *DO NOT log into the WEB UI at this point, you could damage the database data that you've just moved.
6. Shut down Tomcat on the new server.
7. Copy the configuration files from the old server to the new server and edit the paths referenced in those files to reflect their new locations:
 - a. ASConfig.cfg, located in [drive]:\Program Files\Beginfinite\Retain\RetainServer\WEB-INF\cfg.
 - b. Edit the ASConfig.cfg and change several parameters to reflect the storage paths on the new server. Or, you can start tomcat, logon to the Retain Server web admin console, and change the paths under Server Configuration | Storage. If editing the ASConfig.cfg directly, look for these parameters for the storage paths:
 - ♦ <basepath>
 - ♦ <archivePath>
 - ♦ <xmlPath>
 - ♦ <indexPath>
 - ♦ <backupPath>

- ♦ <licensePath>
 - ♦ <EBDBPath>
 - ♦ <exportPath>
- c. RETAIN 4 ONLY:
- i. Edit the path the index directory to reflect its new location by opening the zoo.cfg file in ...\\index\\solrhome\\
 - ii. Copy everything from [drive]:\\RetainServer\\WEB-INF\\solrweb\\WEB-INF\\cfg.
8. Start Tomcat on the new server.
 9. Login to the Retain Server web admin console.
 10. Replace the existing Worker object. This is for systems where the Worker is on the Retain server or for situations where jobs won't start after moving Retain:
 - a. [Create a new worker object \(https://support.microfocus.com/kb/doc.php?id=7020431\)](https://support.microfocus.com/kb/doc.php?id=7020431).
 - b. Download the bootstrap file.
 - c. Edit all jobs assigned to the old worker and re-assign them to the new one.
 - d. Delete the old worker object.
 - e. Restart tomcat.
 - f. From a web browser, go to the RetainWorker (http://[Retain server IP]/RetainWorker) and upload the new bootstrap.
 11. If you backed up any of the Retain Worker properties files (see step #5 under the Preparation section), restore those to their respective directories. This does not apply to most customers - this is very rarely done.

Moving Retain to a Different Windows Server

The easiest method is to re-install everything to the new server and then copy over the archive and configuration files.

These instructions are for moving Retain and maintaining its current version. If your current version of Retain is 2.x and you wish to upgrade afterwards (highly recommended), follow the instructions in the KB article, "Upgrade: Retain 2.x to Retain 3.5.1.1 (Windows)".

- ♦ ["Overview" on page 74](#)
- ♦ ["Preparation" on page 75](#)
- ♦ ["Moving Retain" on page 76](#)

Overview

To move Retain, you must move 3 things:

- ♦ **Configuration files.** Move the ASConfig.cfg, which is stored in a directory off of your Retain installation:

Linux default: /opt/beginfinite/retain/RetainServer/WEB-INF/cfg

Windows default: [drive]:\\Program Files\\Beginfinite\\Retain\\RetainServer\\WEB-INF\\cfg

Indexer configuration files (the entire directory's contents):

Linux default: /opt/beginfinite/retain/RetainServer/WEB-INF/solrweb/WEB-INF/cfg

Windows default: [drive]:\Program Files\Beginfinite\Retain\RetainServer\WEB-INF\solrweb\WEB-INF\cfg

- ♦ **Database.** Unless it's on a separate server from the Retain server and you are not wanting to move it.
- ♦ **Storage.** In summary, the storage directories to be copied are:
 - ♦ archive (required)
 - ♦ backup (optional, although we recommend you skip this since having it on the old server is backup enough until the next Retain maintenance performs a backup on the new server)
 - ♦ ebdb (optional)
 - ♦ export (optional)
 - ♦ index (required in Retain 4, recommended for Retain 3)
 - ♦ license (optional)
 - ♦ xml (optional)

NOTE: If you've added storage partitions in the Retain admin web interface, you must make sure all of those are copied correctly, too.

Preparation

1. Make a note of where your Retain storage directory is located. To determine what that directory is, log into the RetainServer web interface and click on Server Configuration | Storage. The "Base Storage path" is your [Retain storage directory \(https://support.microfocus.com/kb/doc.php?id=7020655\)](https://support.microfocus.com/kb/doc.php?id=7020655).
2. Download Retain to the new server and prepare it for the installation.
 - a. Prepare the download directory.

We recommend creating a directory called Software on the root of the drive. It is not required and you may store the installation files wherever you desire, but if you do not have a strong preference, storing it at [drive]:\Software makes it easier to find later, especially for technical support.
 - b. Download the latest version of Retain on the new server. For Retain 2.x customers, you'll first want to migrate your data to Retain 3.x format first; then proceed with moving Retain.
 - c. Unzip the file, allowing Windows to create a new subdirectory off of "Software" with the same name as the zip file.

For example, if the zip file were named, "Retain4031ga_48.zip", Windows - by default - creates a subdirectory called "Retain4031ga_48", so that the full path to the installation files becomes [drive]:\Software\Retain4031ga_48.
3. (Optional) [Configure NFS Services \(https://support.microfocus.com/kb/doc.php?id=7020834\)](https://support.microfocus.com/kb/doc.php?id=7020834) on the new Windows server if you want to use Support's Retain Auxilliary Tool Set utility to copy your Retain storage to your new server.

4. [Install/Configure IIS \(https://support.microfocus.com/kb/doc.php?id=7020584\)](https://support.microfocus.com/kb/doc.php?id=7020584) on the new server.
5. (Optional) If you have edited the default properties files under the Retain Worker directory(ies) (.../RetainWorker/classes/config) such as attachment.properties or errors.properties, you may want to back up those files to restore them after the final step of the move.

Moving Retain

1. Disable archive all archive jobs, and if applicable, deletion jobs on the old server.
2. For good measure, [shut down Tomcat \(https://support.microfocus.com/kb/doc.php?id=7019531\)](https://support.microfocus.com/kb/doc.php?id=7019531) on the old server.
3. Move the database if it resides on the Retain server; otherwise, proceed to step #4. For customers using MySQL, reference "[Moving MySQL Database to Another Server \(https://support.microfocus.com/kb/doc.php?id=7019952\)](https://support.microfocus.com/kb/doc.php?id=7019952)".
4. Install Retain on the new server. *DO NOT log into the WEB UI at this point, you could damage the database data that you've just moved.
5. Shut down Tomcat on the new server.
6. Copy the Retain storage directory from the old server to the new server (see step #1 under the "Preparation" section). [Robocopy \(http://social.technet.microsoft.com/wiki/contents/articles/1073.robocopy-and-a-few-examples.aspx\)](http://social.technet.microsoft.com/wiki/contents/articles/1073.robocopy-and-a-few-examples.aspx) is Microsoft's tool for this kind job. Make sure to include empty directories. Verbose logging is recommended.

WARNING: This step can take days or weeks depending on volume.

7. Copy the configuration files from the old server to the new server and edit the paths referenced in those files to reflect their new locations:
 - a. ASConfig.cfg, located in [drive]:\Program Files\Beginfinite\Retain\RetainServer\WEB-INF\cfg.
 - b. Edit the ASConfig.cfg and change several parameters to reflect the storage paths on the new server. Or, you can start tomcat, logon to the Retain Server web admin console, and change the paths under Server Configuration | Storage. If editing the ASConfig.cfg directly, look for these parameters for the storage paths:
 - ♦ <basepath>
 - ♦ <archivePath>
 - ♦ <xmlPath>
 - ♦ <indexPath>
 - ♦ <backupPath>
 - ♦ <licensePath>
 - ♦ <EBDBPath>
 - ♦ <exportPath>
 - c. RETAIN 4 ONLY:
 - a. Edit the path the index directory to reflect its new location by opening the zoo.cfg file in ...\\index\\solrhome\\
 - b. Copy everything from [drive]:\RetainServer\WEB-INF\\solrweb\\WEB-INF\\cfg.

8. Start Tomcat on the new server.
9. Login to the Retain Server web admin console.
10. Replace the existing Worker object. This is for systems where the Worker is on the Retain server or for situations where jobs won't start after moving Retain:
 - a. Create a new worker web object. See [“Installing and Configuring a Worker”](#) in [OpenText Retain CE 23.4: Archiving Guide](#).
 - b. Download the bootstrap file.
 - c. Edit all jobs assigned to the old worker and re-assign them to the new one.
 - d. Delete the old worker object.
 - e. Restart tomcat.
 - f. From a web browser, go to the RetainWorker ([http://\[Retain server IP\]/RetainWorker](http://[Retain server IP]/RetainWorker)) and upload the new bootstrap.
11. If you backed up any of the Retain Worker properties files (see step #5 under the Preparation section), restore those to their respective directories. This does not apply to most customers - this is very rarely done.

Moving Retain to a Different Linux Server

The easiest method is to re-install everything to the new server and then copy over the archive and configuration files.

These instructions are for moving Retain and maintaining its current version. If your current version of Retain is 2.x and you wish to upgrade afterwards (highly recommended), follow the instructions in the KB article, "Upgrade: Retain 2.x to Retain 3.x (Windows)".

- ♦ [“Overview” on page 77](#)
- ♦ [“Preparation” on page 78](#)
- ♦ [“Move the MySQL Database” on page 79](#)

Overview

In order to move Retain there are 3 things that are not optional that MUST be moved.

1. The ASConfig.cfg
2. The Database (unless it's on a separate server in which case it can stay there. That part is up to you.)
3. The archive files. It is recommended that you also copy the indexes. It would be more work not to and would be disruptive to searching.

Everything else can be re-created but can also be copied if you wish. In summary, here are the storage directories to be copied:

- ♦ archive (required)
- ♦ index (recommended)
- ♦ backup (optional)
- ♦ ebdb (optional)

- ♦ export (optional)
- ♦ license (optional)
- ♦ xml (optional)
- ♦ .../zookeeper/zoo.cfg
- ♦ .../RetainServer/WEB-INF/solrweb9/WEB-INF/cfg/

NOTE: If you've added storage partitions in the Retain admin web interface, you must make sure all of those are copied correctly, too.

Preparation

1. Make a note of where your Retain storage directory is located.

To determine what that directory is, log into the RetainServer web interface and click on Server Configuration | Storage. The "Base Storage path" is your [Retain storage directory](#).

2. Download Retain to the new server and prepare it for the installation.

- a. Create the download directory.

- ♦ Make the directory for holding the software: `md /software`
- ♦ Change to that directory: `cd /software`

- b. Download the major Retain version you are currently using into the software directory you created on the new server.

If Retain 2.x, download that version. It could be a newer build of that same major version. What you want to avoid is downloading Retain 2.x when your old system is Retain 1.x or downloading Retain 3.x when your old system is Retain 2.x.

Download the same major version of Retain that you are currently using from the [OpenText Customer Center](#), going with the latest build of that major version (where "major version" is 2.x, 3.x, 4.x, etc):

NOTE: You can use the `wget` command to download the software to the Linux server by changing into the software directory you created in step 2.a and running this command: `wget '[url]'`

- c. Unzip the file and make the script files (.sh) executable.

- i. `unzip [retain zip file] -d [retain zip filename, excluding the ".zip" at the end]`

Example: `unzip Retain3511ga_53.zip -d retain3511ga_53`

The "-d" option causes it to create Note how we kept the "r" in lowercase following the "-d" option since Linux is case sensitive when changing directories.

- ii. `chmod +x *.sh`

3. Install Apache2 to the new server.

- a. Launch YaST | Software Management.

- b. In the search window, type: Apache2.
 - c. Click on Apache2 (only), click on the Accept button, and accept the defaults.
4. (Optional) If you have edited the default properties files under the .../RetainWorker/WEB-INF/classes/config, you may want to back up those files to restore them after the final step of the move. However, you could always access them from the original Retain server if needed.

Move the MySQL Database"

1. Disable all archive and deletion jobs on the old server.
2. For good measure, [stop Tomcat \(http://support.microfocus.com/kb/doc.php?id=7019531\)](http://support.microfocus.com/kb/doc.php?id=7019531) on the old server.
3. Move the MySQL database if it resides on the Retain server. See: "[Moving MySQL Database to Another Server \(https://www.novell.com/documentation/retain-23.4/install-upgrade/data/t4n9424p3wuy.html\)](https://www.novell.com/documentation/retain-23.4/install-upgrade/data/t4n9424p3wuy.html)".
4. Install Retain on the new server.
 - a. Change to your Retain software installation directory (i.e., /software/retain3510ga_262)
 - b. Execute the installation script: ./RetainInstall.sh

*****IMPORTANT*****

At a certain point of the installation, you are presented the following prompt:

Will MySQL be running on the same server as Retain?

1) Yes

2) No <---- Select this option even if MySQL is running on the same server

Even if MySQL is running on the same server as Retain, type "2" for "No"; otherwise, it attempts to install and configure MySQL. At this point, you have already installed MySQL and moved your MySQL database to this new server, so selecting option 1 causes problems.

*DO NOT log into the WEB UI at this point, you could damage the database data that you've just moved. Now is probably the best time to Stop Retain.

5. Copy your storage directory contents from the existing server to the new server.

NOTE: This step is made easy by a Linux utility created by GWAVA Support for this very purpose called [Retain Auxiliary Tool Set \(http://support.microfocus.com/kb/doc.php?id=7019279\)](http://support.microfocus.com/kb/doc.php?id=7019279) (affectionately referred to as "RATS").

If you wish to manually do this (ok, so you like to do it the hard way), here are the steps:

- a. Connect the existing server's storage directory to the new server; or, rsync supports addressing the DNS hostname or IP address of the destination server if you wish to do it that way.

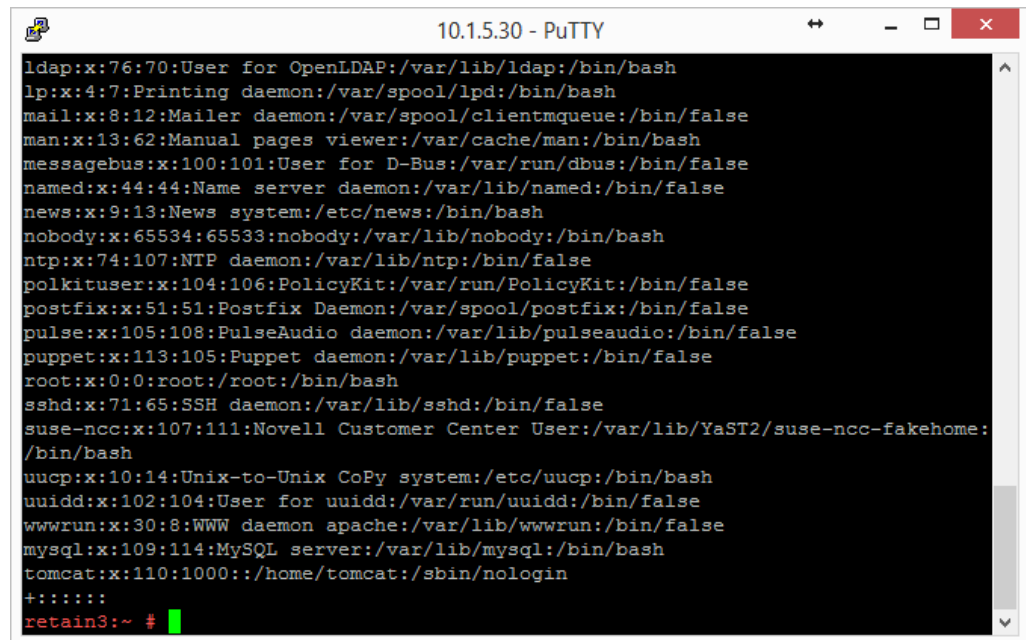
If you decide to mount the new server's storage directory, one way to do this is to create an "export" of the existing server's storage directory and create an NFS mount to a drive from the new server over to the exported drive on the existing server. For sample instructions on how to create an export and how to mount to it, see "[How to 'Map' \(Mount\) Another Server's Linux Directory to Your Server \(https://support.microfocus.com/kb/doc.php?id=7020700\)](http://support.microfocus.com/kb/doc.php?id=7020700)".

- b. Change the tomcat userid on the new server to match the tomcat userid on the old server (if necessary).

File ownership and permissions are tied to a userid, not a user name; thus, if tomcat on server A has a userid assignment of 110 and tomcat on new server B has 107, then the files that get copied over come over as being owned by userid 110, not "tomcat". As the files get stored on server B, it looks up userid 110 on its system. If that ID is assigned to another process, say "Puppet", then the files are owned by that program, not tomcat. So, you must check what the tomcat userid is on source server A and on destination server B and make them match by changing the userid, if necessary, on destination server B.

- i. On the old server, type: `cat /etc/passwd`

This lists all the user accounts on the server, showing their userids and group IDs. In the list in the screenshot, tomcat is listed last and its userid is 110 and its group ID is 1000.



```
10.1.5.30 - PuTTY
ldap:x:76:70:User for OpenLDAP:/var/lib/ldap:/bin/bash
lp:x:4:7:Printing daemon:/var/spool/lpd:/bin/bash
mail:x:8:12:Mailer daemon:/var/spool/clientmqueue:/bin/false
man:x:13:62:Manual pages viewer:/var/cache/man:/bin/bash
messagebus:x:100:101:User for D-Bus:/var/run/dbus:/bin/false
named:x:44:44:Name server daemon:/var/lib/named:/bin/false
news:x:9:13:News system:/etc/news:/bin/bash
nobody:x:65534:65533:nobody:/var/lib/nobody:/bin/bash
ntp:x:74:107:NTP daemon:/var/lib/ntp:/bin/false
polkituser:x:104:106:PolicyKit:/var/run/PolicyKit:/bin/false
postfix:x:51:51:Postfix Daemon:/var/spool/postfix:/bin/false
pulse:x:105:108:PulseAudio daemon:/var/lib/pulseaudio:/bin/false
puppet:x:113:105:Puppet daemon:/var/lib/puppet:/bin/false
root:x:0:0:root:/root:/bin/bash
sshd:x:71:65:SSH daemon:/var/lib/ssh:/bin/false
suse-ncc:x:107:111:Novell Customer Center User:/var/lib/YaST2/suse-ncc-fakehome:/bin/bash
uucp:x:10:14:Unix-to-Unix CoPy system:/etc/uucp:/bin/bash
uuid:x:102:104:User for uuid:/var/run/uuid:/bin/false
wwwrun:x:30:8:WWW daemon apache:/var/lib/wwwrun:/bin/false
mysql:x:109:114:MySQL server:/var/lib/mysql:/bin/bash
tomcat:x:110:1000:/home/tomcat:/sbin/nologin
+:::
retain3:~ #
```

- ii. Do this same procedure on the new server.

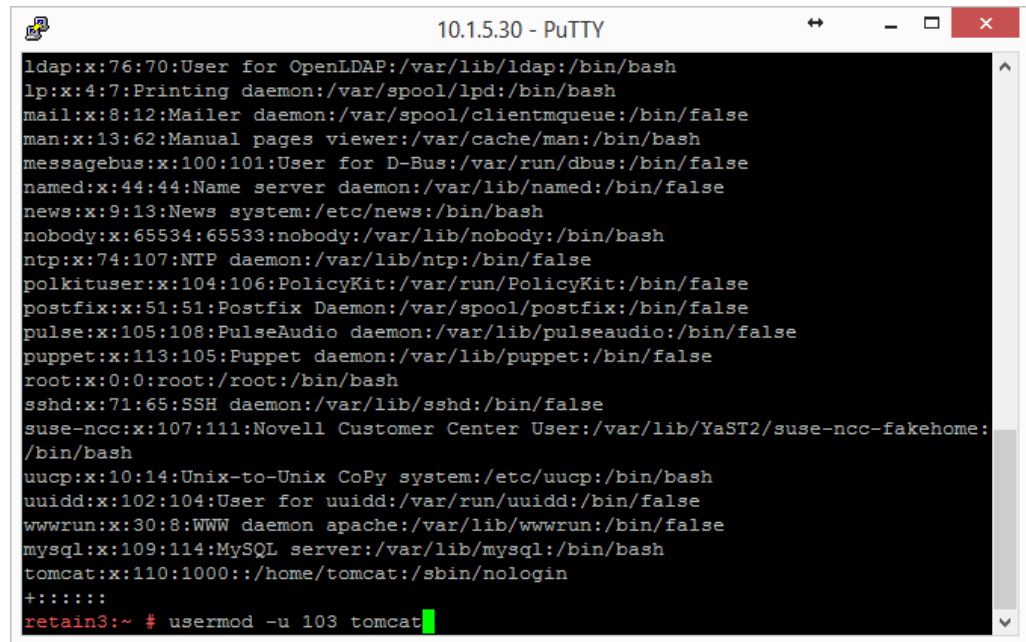
If the userids match for tomcat on both servers, consider yourself fortunate and you are ready for the next step "c"; otherwise, proceed to sub-step "3)".

- iii. Look at the new server's userid list you obtained.

Determine whether another process on the new server is using the same userid assigned to Tomcat on the old server.

If so, you'll need to change that processes' userid to an unused userid by following the same steps outlined in the following sub-step "4)" for Tomcat's userid change. Then, follow sub-step "4)" to change Tomcat's userid.

- iv. Change a userid by typing this command: `usermod -u [new userid assignment] [username getting the new userid]`



You can also use vi to edit /etc/passwd and manually change the userids; whichever is easier for you.

- c. Change to the main Retain storage directory and copy it from the old server to the new server.

We recommend using rsync. Regardless, when copying files on Linux, be sure that whatever method you use copies over the permissions and ownerships.

NOTE: This should carry over the tomcat ownership and proper file permissions; however, if they are not preserved during the copy process for some reason, you need to set them:

chown -R tomcat:tomcat [full path to new storage directory]

chmod -R 744 [full path to new storage directory]

This could take days or weeks to complete since the storage's archive directory contains over 16M subdirectories; thus, it is much better if the permissions/ownership are preserved during the copy process.

6. Shut down Tomcat on the new server if you haven't already.

7. Copy Retain configuration file(s):

Again, copy in such a way that you maintain its file permissions and ownership (tomcat:tomcat); otherwise, remember to set the file ownership and permissions afterwards..

- a. Copy the /opt/beginfinite/retain/RetainServer/WEB-INF/cfg/ASConfig.cfg

NOTE: If the storage directory on the new server is different from the old server, you must open ASConfig.cfg and change several parameters to reflect the storage paths on the new server:

- ♦ <basepath>
- ♦ <archivePath>
- ♦ <xmlPath>

- ♦ <indexPath>
 - ♦ <backupPath>
 - ♦ <licensePath>
 - ♦ <EBDBPath>
 - ♦ <exportPath>
- b. If this is a Retain 4 system:
 - i. Copy the .../index/solrhome/zoo.cfg and edit the path the index directory if it has changed.
 - ii. Copy everything from .../RetainServer/WEB-INF/solrweb/WEBINF/cfg.
 8. Start Tomcat on the new server.
 9. Login to the RetainServer web interface.
 10. For systems where the Worker is on the Retain server, create a new worker object in the RetainServer web interface to replace the old one:
 - a. [Create a new worker \(https://support.microfocus.com/kb/doc.php?id=7020431\)](https://support.microfocus.com/kb/doc.php?id=7020431).
 - b. Download the bootstrap file.
 - c. Edit all jobs assigned to the old worker and re-assign them to the new one.
 - d. Delete the old worker.
 - e. Restart tomcat.
 - f. From a web browser, go to the RetainWorker (http://[Retain server IP]/RetainWorker) and upload the new bootstrap
 11. If you backed up any of the RetainWorker properties files (see step #4 under the Preparation section), restore those to their respective directories. This does not apply to most customers - this is very rarely done.

4 Moving a MySQL Database to Another Server

The steps for moving a MySQL database are provided as a courtesy and are not officially supported by OpenText; however, we do provide consulting services that can perform this for you. Contact your local sales representative if interested.

- ♦ [“Linux to Linux” on page 83](#)
- ♦ [“Linux or Windows to Windows” on page 84](#)

Linux to Linux

1. Disable all archive and deletion jobs and stop Tomcat on the Retain server.
2. Perform a dump of the database.
3. Download MySQL onto the new server and un-tar it. Retain only needs the client and the server RPM's, but it is simpler to download one bundle file then two separate files.
4. Install MySQL and configure the retain database on the new server.

At this point, you may want to configure MySQL memory allocation in the `/etc/my.cnf` file. Your retain database uses the `innodb` storage engine. The following should be researched and considered:

```
innodb_buffer_pool_size
innodb_innodb_additional_mem_pool_size
innodb_log_file_size
innodb_log_buffer_size
```

If done correctly, this can enhance the performance of MySQL and Retain. You might want to research this and experiment with those settings to find what works best for your system. OpenText support cannot answer questions about or help customer's with their databases. That is the customer's responsibility.

If you decide to change the `innodb_log_file_size` setting, you must take the following steps first:

- a. Log into MySQL: `mysql -u root -p`
- b. From the MySQL prompt, type: `SET GLOBAL innodb_fast_shutdown=0;`
Then type "quit" to log out of MySQL.
- c. Shut down MySQL: `rcmysql stop`
- d. Rename the `ib_logfile0` and `ib_logfile1` files.
- e. Edit the `/etc/my.cnf` and change the logfile size.

- f. Start up MySQL: `rcmysql start`

If you do not take these steps when changing the logfile size, MySQL doesn't load. You can re-enable the `innodb_fast_shutdown (...=1)` afterwards if there is a need, but average size systems do not seem to experience any significant delay in MySQL shutdowns by leaving fast shutdowns disabled.

5. Import the dump into the new retain database.

`mysql -u root -p retain < /[path to dump file]/[dump filename]` To watch the progress of the import, use this command: `watch "mysqladmin -u root -p[mysql root user pw] processlist"`

6. (Optional) Reboot the server to clear the memory. 7. Start up Tomcat and re-enable archive jobs; and if used, re-enable deletion jobs.

Linux or Windows to Windows

1. Disable all archive and deletion jobs and - for good measure, stop Tomcat on the Retain server.
2. Perform a [dump of the database \(https://dev.mysql.com/doc/refman/5.5/en/mysqldump.html\)](https://dev.mysql.com/doc/refman/5.5/en/mysqldump.html).
3. Download MySQL onto the new server.
4. Install MySQL and configure the retain database on the new server.

Refer to the appendix of the Windows Install Guide for instructions. At this point, you may want to configure MySQL memory allocation in the `[drive]:\Program Files\MySQL\MySQL Server 5.x\my.ini` file. Your retain database uses the InnoDB storage engine. The following should be researched and considered (reference our KB, "MySQL Database maintenance for Best Performance"):

```
innodb_buffer_pool_size
innodb_innodb_additional_mem_pool_size
innodb_log_file_size
innodb_log_buffer_size
```

This can enhance the performance of MySQL and Retain. The MySQL for Windows installer configures settings for you based on your system's available memory and the answers to the questions you provide its configuration wizard, so there may not be anything you need to do; however, you might want to research this and play with those settings to find what works best for your system. OpenText support cannot answer questions about or help customer's with their databases. That is the customer's responsibility.

If you decide to change the `innodb_log_file_size` setting, you must take the following preparatory steps before doing so:

- a. Open the MySQL Command Line Client (Start | Programs | MySQL)
- b. Log into MySQL: `mysql -u root -p`
- c. From the MySQL prompt, type: `SET GLOBAL innodb_fast_shutdown=0`; Then type "quit" to log out of MySQL.
- d. Stop the MySQL service.
- e. Rename the `ib_logfile0` and `ib_logfile1` files.
- f. Edit the `C:\Program Files\MySQL\MySQL Server 5.x\my.ini` and change the `innodb_log_file_size` setting and save the file.
- g. Start the MySQL service.

If you do not take these steps when changing the logfile size, MySQL doesn't load. You can re-enable the `innodb_fast_shutdown (...=1)` afterwards if there is a need, but average size systems do not seem to experience any significant delay in MySQL shutdowns by leaving it disabled.

5. Import the dump into the new retain database.

- a. Open the MySQL Command Line Client (Start | Programs | MySQL)b) Type: `mysql -u root -p retain < [path to dump file]\[dump filename]`

EX: `mysql -u root -p retain < d:\dump\2013-12-11.sql` NOTE: This assumes that the `..\MySQL\bin` directory is in the path.

6. (Optional) Reboot the server to clear memory.8. Start Tomcat and re-enable archive jobs; and, if used, re-enable deletion jobs. 9. If only moving MySQL and not Retain; and, if using IP addresses and not DNS names (or using a new DNS address), change Retain's URL to the MySQL server in the `ASConfig.cfg`:

- a. Edit the `ASConfig.cfg` (`/opt/beginfinite/retain/RetainServer/WEB-INF/cfg`) 2) Change the `<DBURL>` and `<confDBURL>` settings to reflect the the new IP/DNS address 3) Save the changes 4) Restart Tomcat on the Retain server.

5 Upgrading MySQL to a New Version

- “Upgrading MySQL on Linux” on page 87
- “Upgrading MySQL on Windows” on page 88

Upgrading MySQL on Linux

Upgrading and existing MySQL on a Retain server.

1. Stop Tomcat on the Retain server. See “Starting and Stopping the Retain Server” on page 53
2. Perform a [dump](https://dev.mysql.com/doc/refman/5.5/en/mysqldump.html) (<https://dev.mysql.com/doc/refman/5.5/en/mysqldump.html>) of the database.
3. Download MySQL onto the server on which you wish to install MySQL and un-tar it. Retain only needs the client and the server RPM's, but it is simpler to download one bundle file then two separate files.
4. Stop MySQL: `rcmysql stop`
5. Uninstall MySQL if upgrading to the same server; otherwise, skip to step #8.
 - a. Check YaST | Software Management first for MySQL. Uninstall it from there if applicable.
If it has a "lock" icon, it cannot be uninstalled from Software Management. Proceed to step "b".
 - b. Check for any other MySQL RPMs.
`rpm -qa | grep -i mysql`
Sample screen output:

```
gwlinux:/ # rpm -qa | grep -i mysql
libmysqlclient_r15-5.0.96-0.6.1
MySQL-server-community-5.1.72-1.sles11
MySQL-client-community-5.1.72-1.sles11
libmysqlclient15-5.0.96-0.6.1
libqt4-sql-mysql-4.6.3-5.25.4
```
 - c. Uninstall all instances of MySQL found in step b (if any) - but only the entries beginning with "MySQL..."
`rpm -e [current mysql rpm]`
Based on the screenshot shown above in in sub-step "b", I would type:
`rpm -e MySQL-server-community-5.1.72-1.sles11`
This has to be done for each RPM discovered.
6. Delete or rename the entire "datadir" directory.
This is the mysql directory containing the ibdata1 database and the "retain" subdirectory. It is no longer needed since you have already dumped the database. All of the files and subdirectories are recreated without any loss of data as long as you have a good/current dump.

The "datadir" directory is specified in the /etc/my.cnf. Look for the "[mysqld]" section. The first line reads, "datadir=[path]"

If not specified in the my.cnf, the datadir could be at /var/lib/mysql. This is the default datadir directory if MySQL is installed manually.

7. Rename /etc/my.cnf to my.cnf.old.
8. Install MySQL and configure the retain database.
9. Import the dump into the new retain database.

`mysql -u root -p retain < /[path to dump file]/[dump filename]`

To watch the progress of the import, use this command: `watch "mysqladmin -u root -p[mysql root user pw] processlist"`

10. Reboot the server to clear the memory; otherwise, start up Tomcat and you are done.

Upgrading MySQL on Windows

Upgrading MySQL

1. Stop Tomcat on the Retain server. See [“Starting and Stopping the Retain Server” on page 53](#).
2. Perform a [dump](https://dev.mysql.com/doc/refman/5.5/en/mysqldump.html) (<https://dev.mysql.com/doc/refman/5.5/en/mysqldump.html>) of the database.
3. Download MySQL onto the server on which you want to install it.
4. Install MySQL and configure the retain database. Refer to the appendix of the Windows Install Guide for instructions.
5. Import the dump into the new retain database.
 - a. Open a command window (cmd).
 - b. Change directories to: C:\Program Files\MySQL\MySQL Server 5.0\bin (the beginning of the path depends upon where MySQL was installed).
 - c. Type: `mysql -u root -p retain < [path to dump file]\[dump filename]`
EX: `mysql -u root -p retain < d:\dump\2013-12-11.sql`

NOTE: This assumes that the `.. \MySQL\bin` directory is in the path.

6. (Optional) Reboot the server to clear memory; otherwise, just start Tomcat.