

Novell Teaming 2.0 Virtual Eval

Introduction

Welcome to the Novell® Teaming 2.0 Virtual Eval. This virtual image can be used as a demonstration or proof of concept of the capabilities of the Teaming product.

By following this Quick Start, and optionally the accompanying video, you can have a fully functioning Novell Teaming system up and running in your business environment within about 20 minutes. Users will be able to log in by using their eDirectory™ or Active Directory* usernames and passwords. They will be able to receive e-mails with notification of Teaming events in their mailboxes.

The Teaming Virtual Eval is provided as a SUSE® Linux Enterprise Server (SLES) 11 VMware* image that can be launched by a number of VMware products. (If you plan to use it on VMware ESX, you need to convert the image first.) If you do not have an existing copy of VMware, you can download VMware Player free of charge from www.vmware.com. VMware Player is available for a number of host platforms, including Linux* and Windows*.

Before You Implement the Image

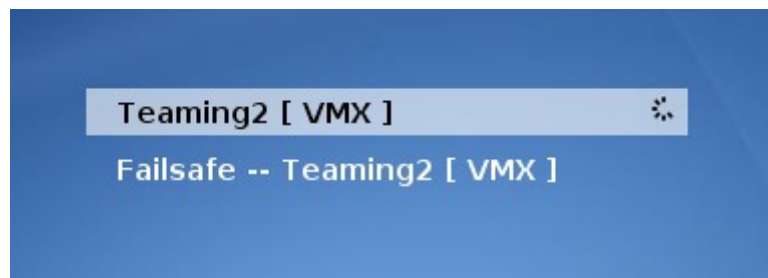
You need several items of information before implementing the Teaming image. These should be available from your network administrator and your e-mail administrator.

1. Network information:
 - a. A valid static IP address for your network.
 - b. The subnet mask for the IP address.
 - c. The default gateway.
 - d. DNS server addresses.
 - e. A DNS entry for the Teaming server address. However, if you do not have a DNS server, you can access the Teaming site using the Teaming server IP address.
 - f. The host name that you should use for the Teaming site. This usually is something like `teaming.mycompany.com`.

2. SMTP information if you want to send e-mail notifications and mail:
 - a. The address of your SMTP relay host.
 - b. The e-mail address that Teaming can use to send mail messages, usually something like teaming@mycompany.com.
 - c. If you need to authenticate to the SMTP relay host in order to relay messages, you need the password for the user.
 - d. If you want to receive mail into the Teaming site, you need to have an MX record set up for the Teaming server, such as `teaming.mycompany.com`.
3. If you want to use LDAP authentication:
 - a. An LDAP user context and password, with read rights to the attributes you are accessing.
 - b. The LDAP server address and port.
 - c. The base DN where user information is located.

Starting the Image

1. Start VMware and boot the Teaming virtual machine.
2. When prompted, select the first option on the menu, then press Enter. This is auto-selected after a few seconds if you wait.

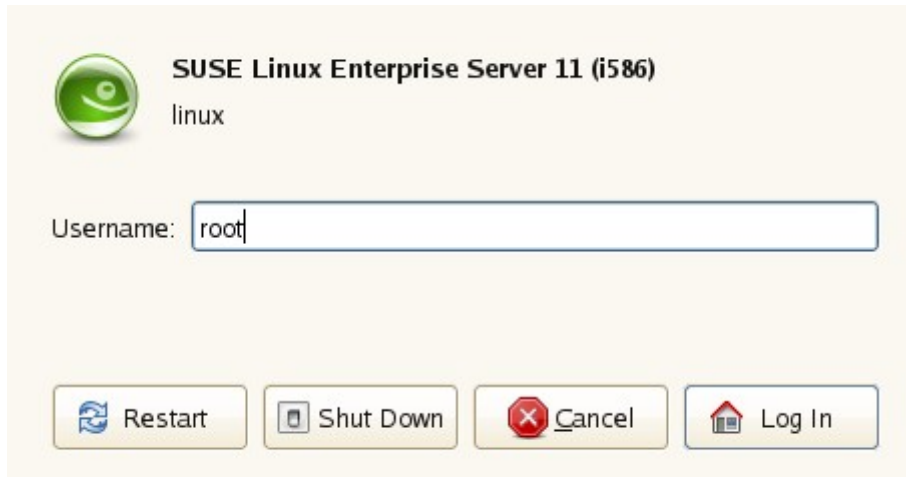


The server takes a few minutes to boot.

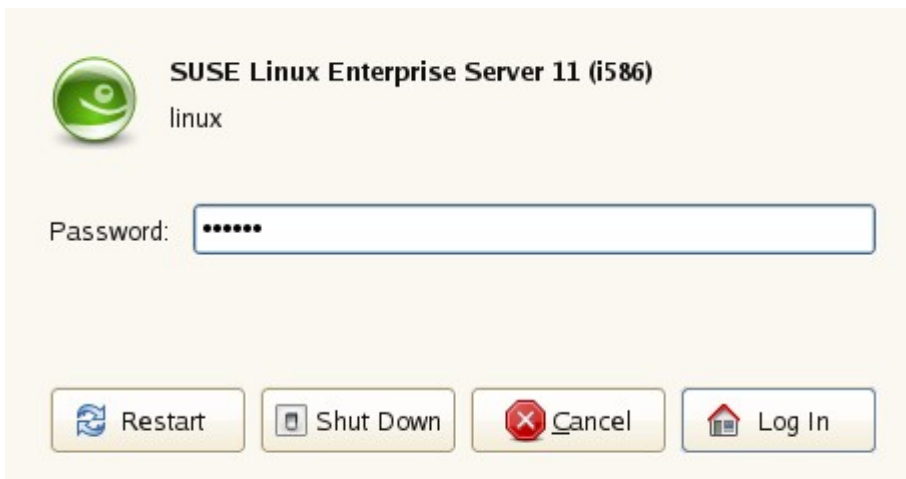
3. Review the license agreement, pressing the Page Down key to scroll through it.
4. Press Q to exit the viewer.
5. At the *Do you accept the EULA* prompt, if you agree with the license, press Y, then press Enter.

The server continues to boot for about a minute.

Logging In to the Image



1. When prompted for a username, log in to the server as the `root` user. This is the SLES administrative user.
2. Click *Log In*.



3. Type the password, which is `novell` (all lowercase).
4. Click *Log In*.

You should now be successfully logged into the server desktop.

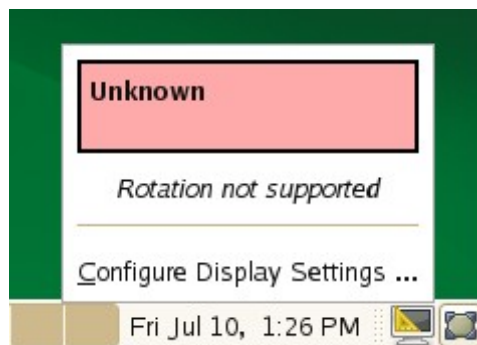
Changing the Screen Resolution

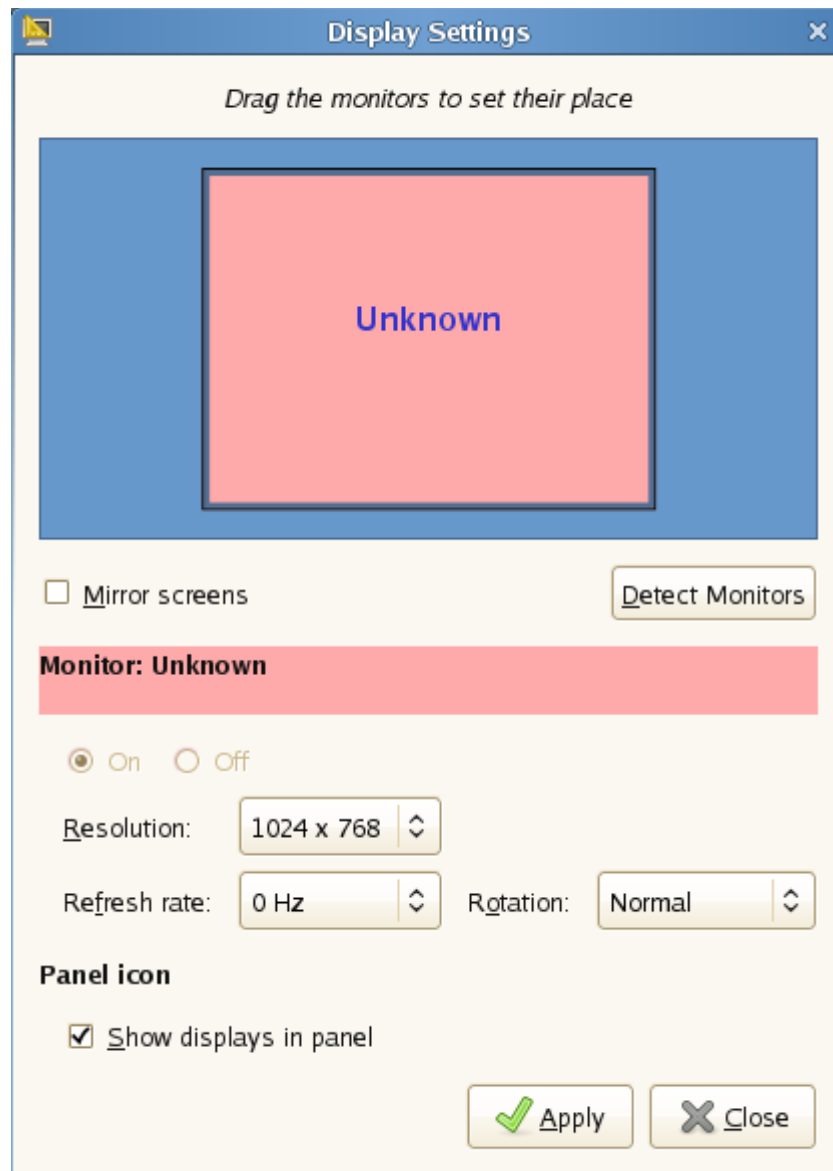
The screen resolution needs to be set to at least 1024 x 768, so that the installation dialog boxes can be displayed.

1. Click the *Configure Display Settings* icon on the toolbar at the bottom of the screen.



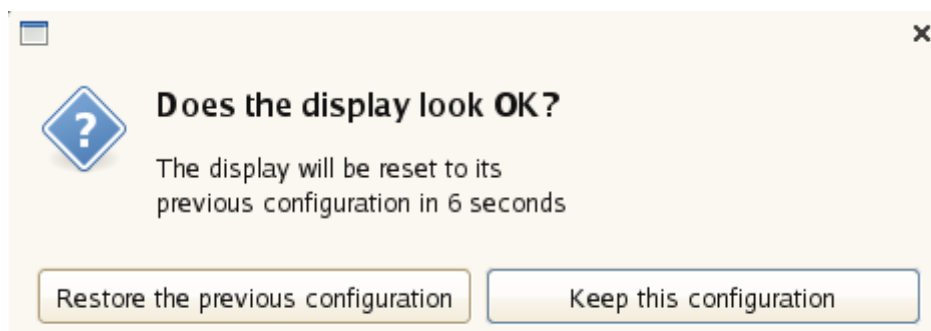
2. Click *Configure Display Settings*.





3. Change the resolution to 1024 x 768.

4. Click *Apply*.



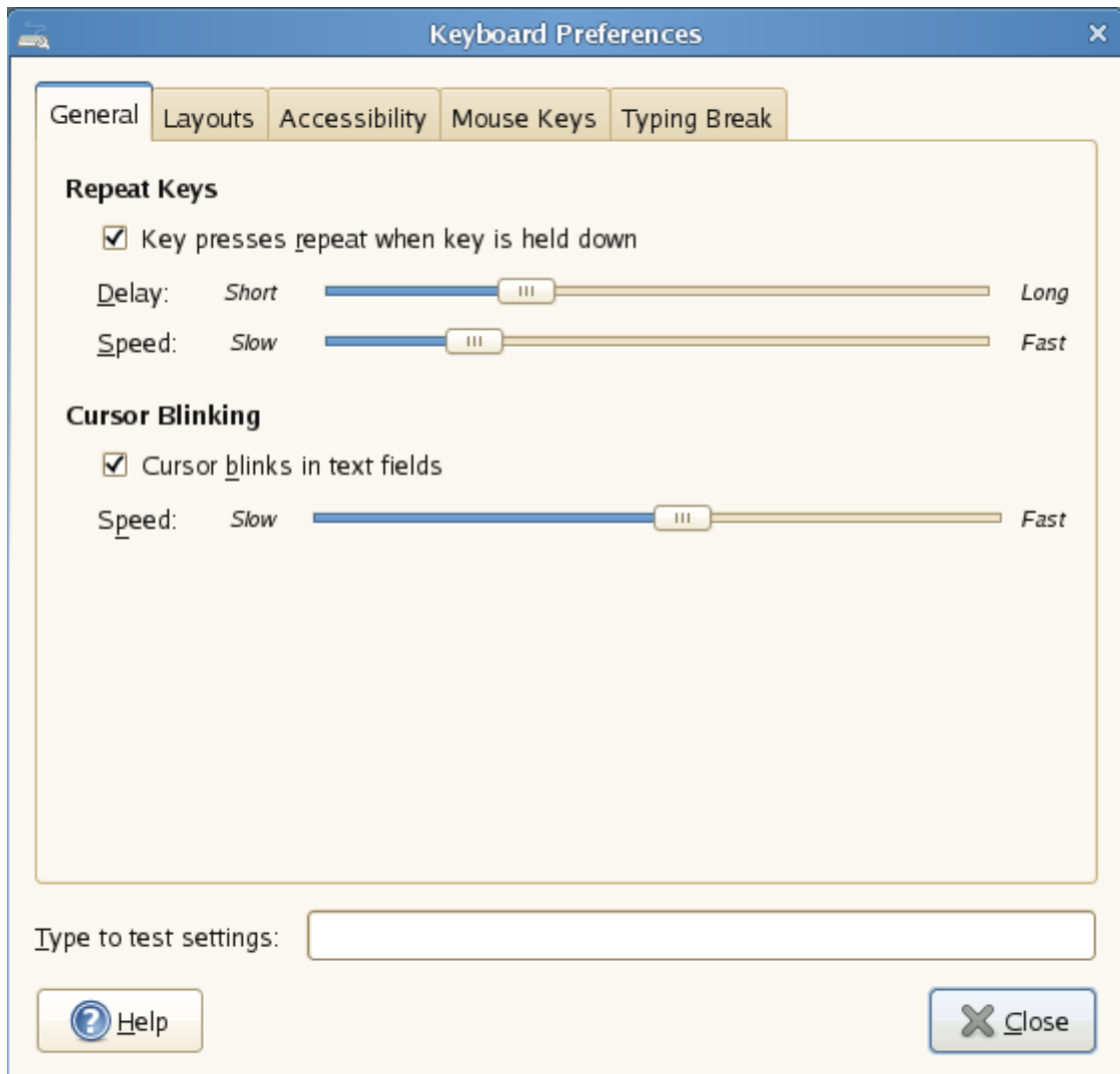
5. Click *Keep this configuration* before the screen resets, then click *Close*.

Changing the Keyboard Layout

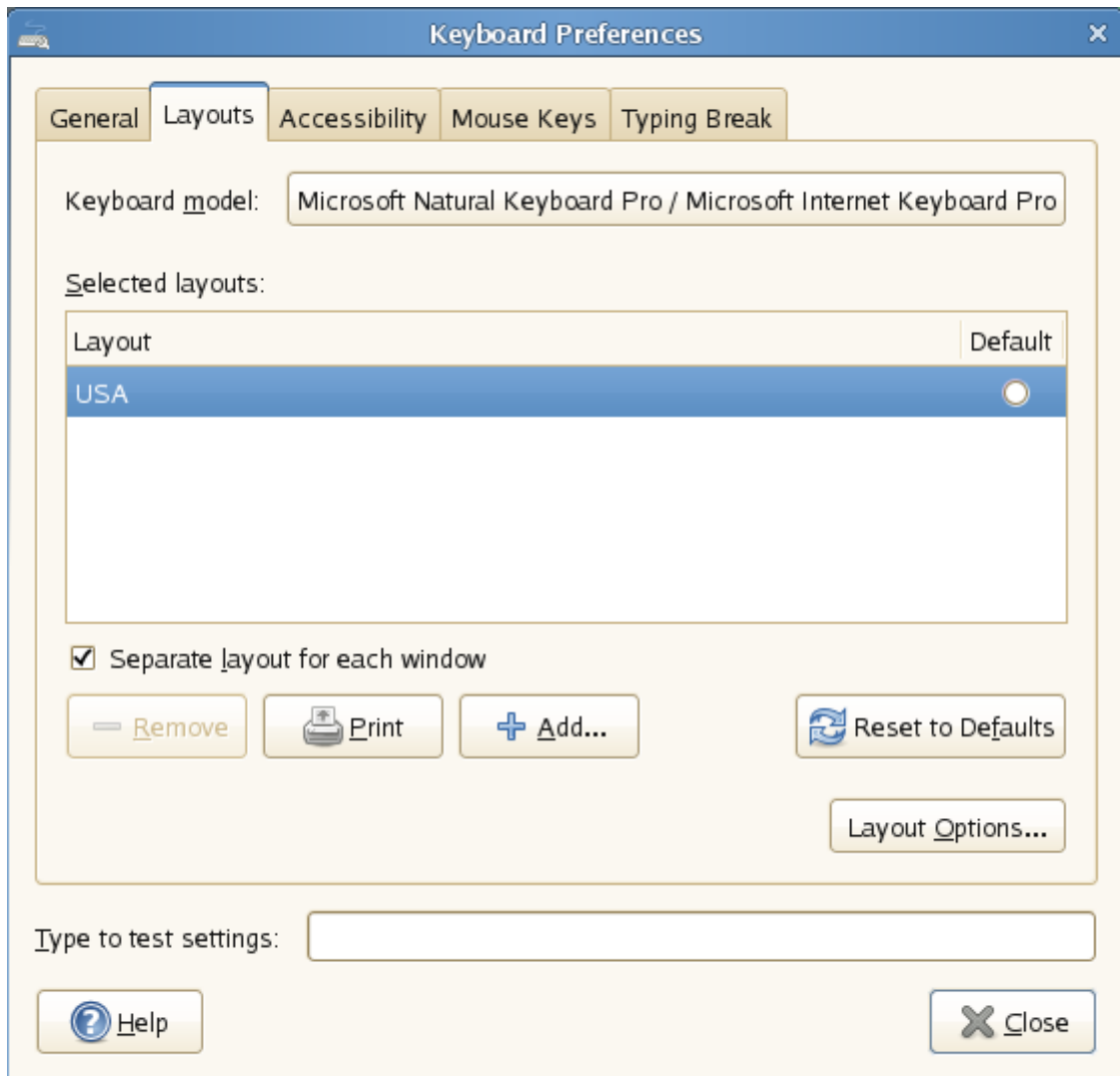
The keyboard layout has been set up for a US keyboard. If you are using another keyboard, you might want to change the keyboard layout for your environment. If you do not want to change the keyboard layout, skip to the next section on page 10.



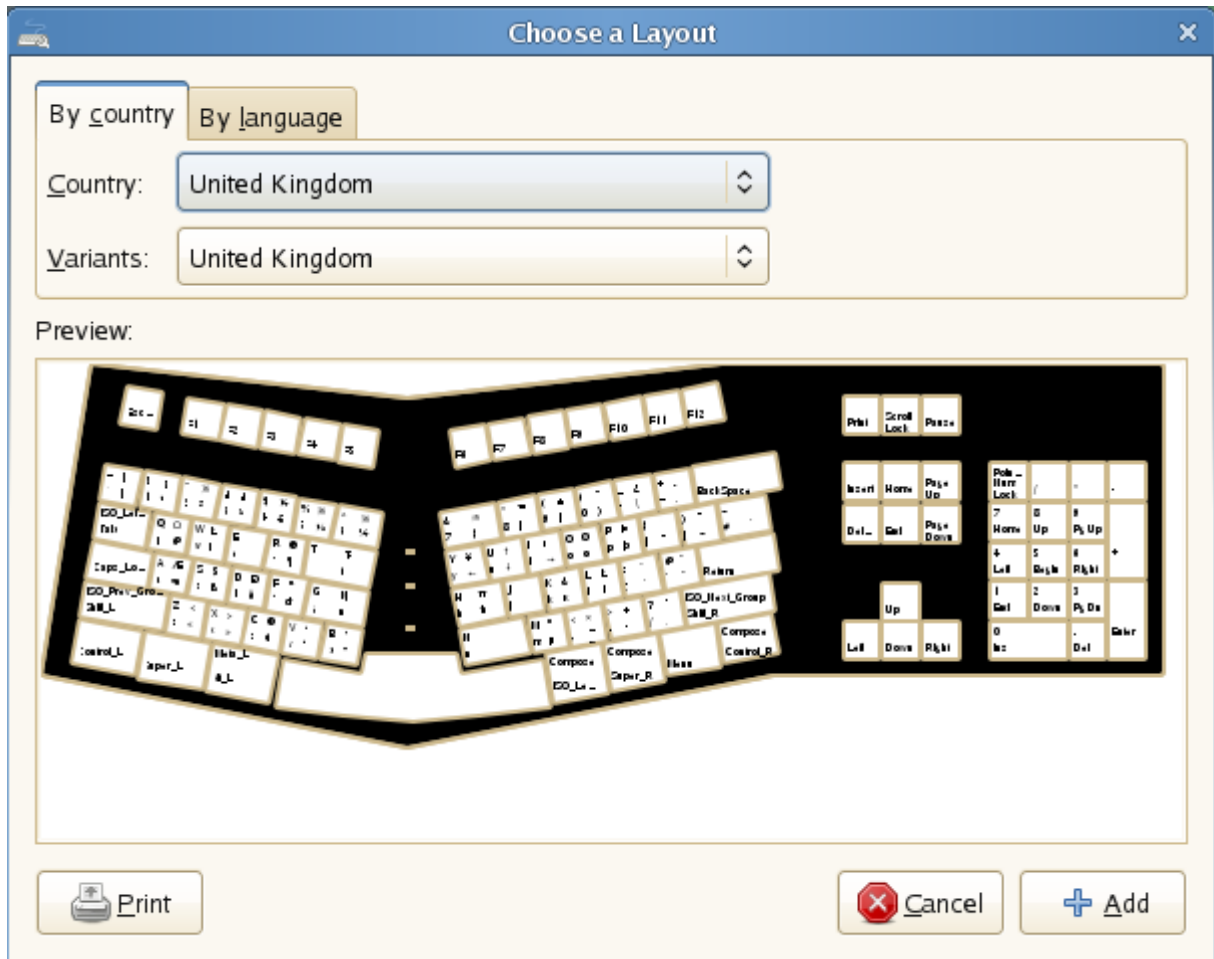
1. Double-click the *Keyboard* icon on the desktop to bring up the Keyboard Preferences dialog box.



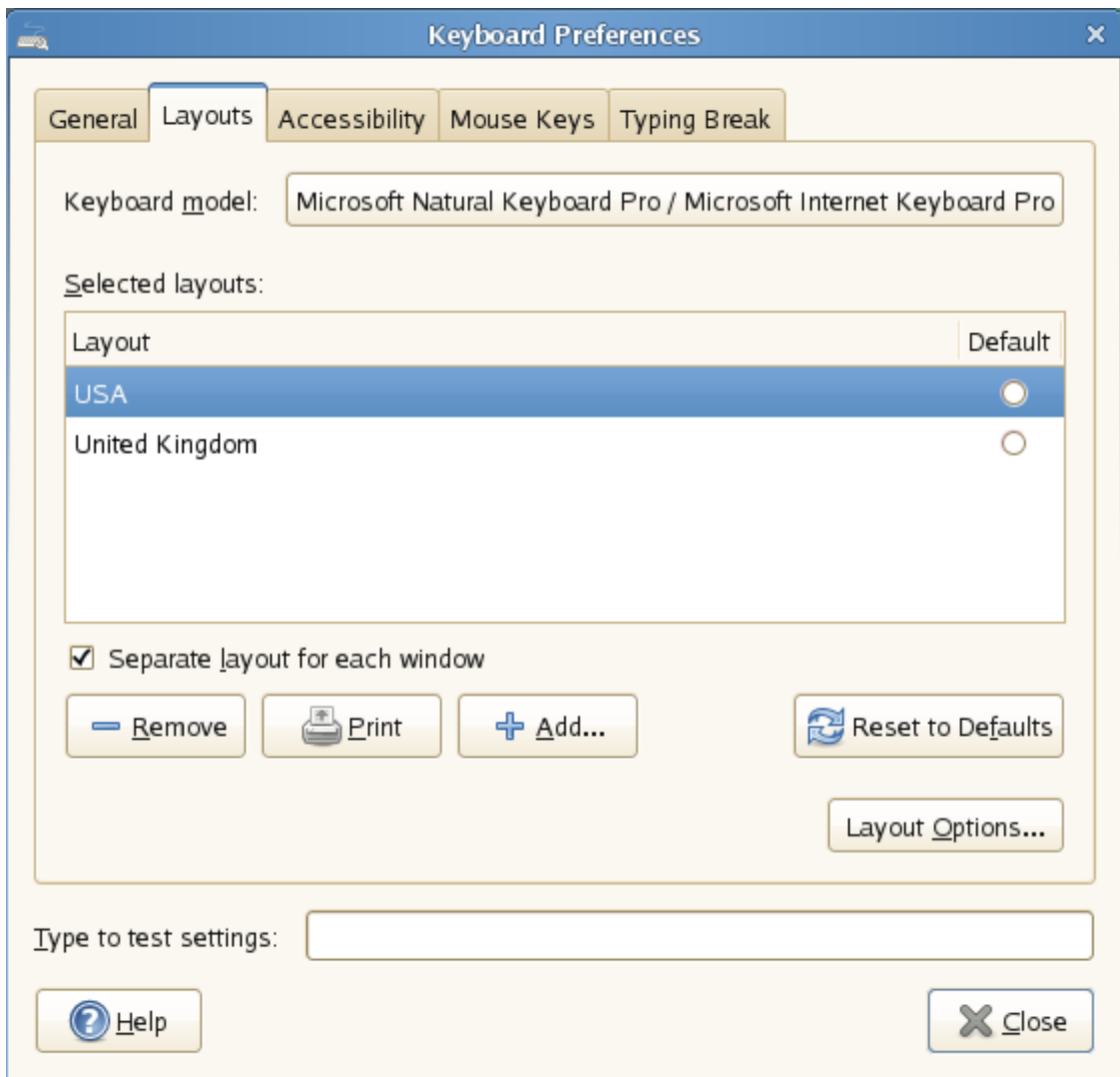
2. Click the *Layouts* tab.



3. Click *Add*.



4. Select the country layout you are using from the drop-down list.
5. If necessary, select the variant to use.
6. Click *Add*.



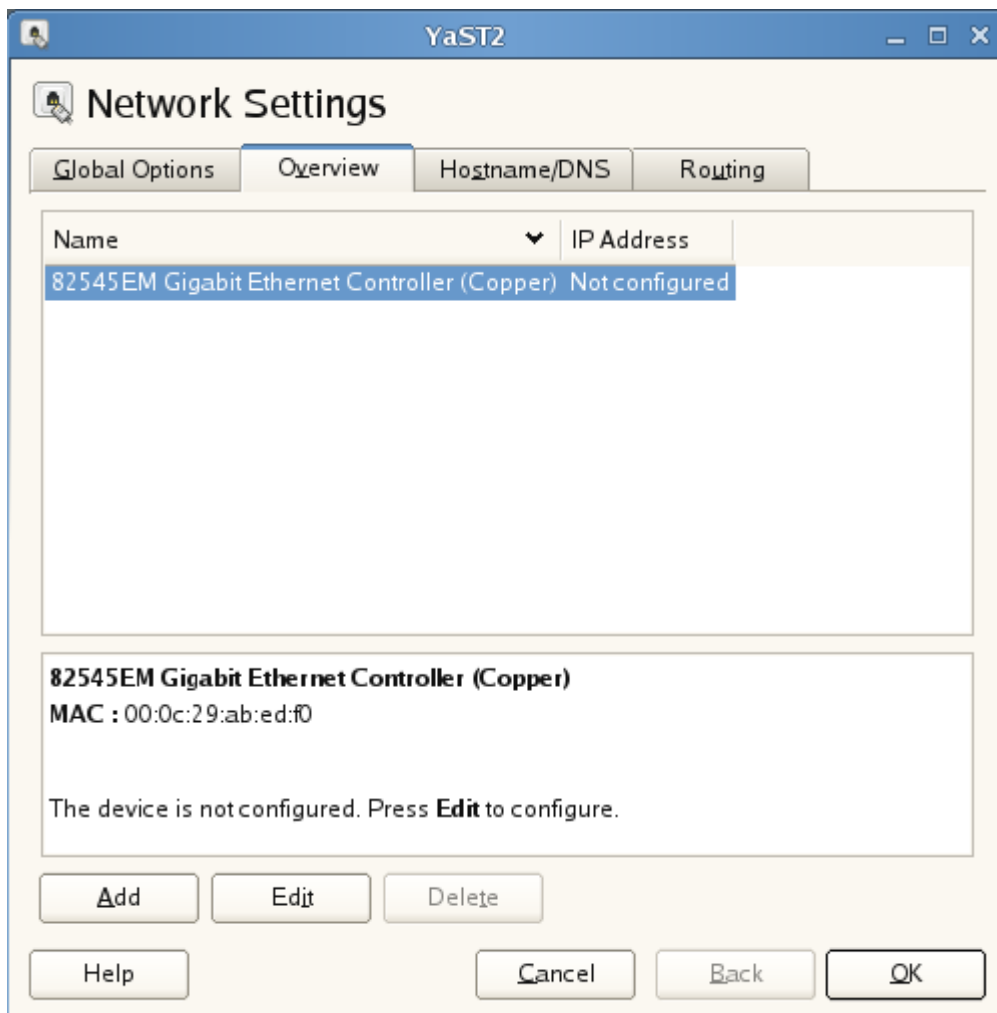
7. Select the unwanted keyboard.
8. Click *Remove*.
9. Click *Close*.

Changing the IP Address

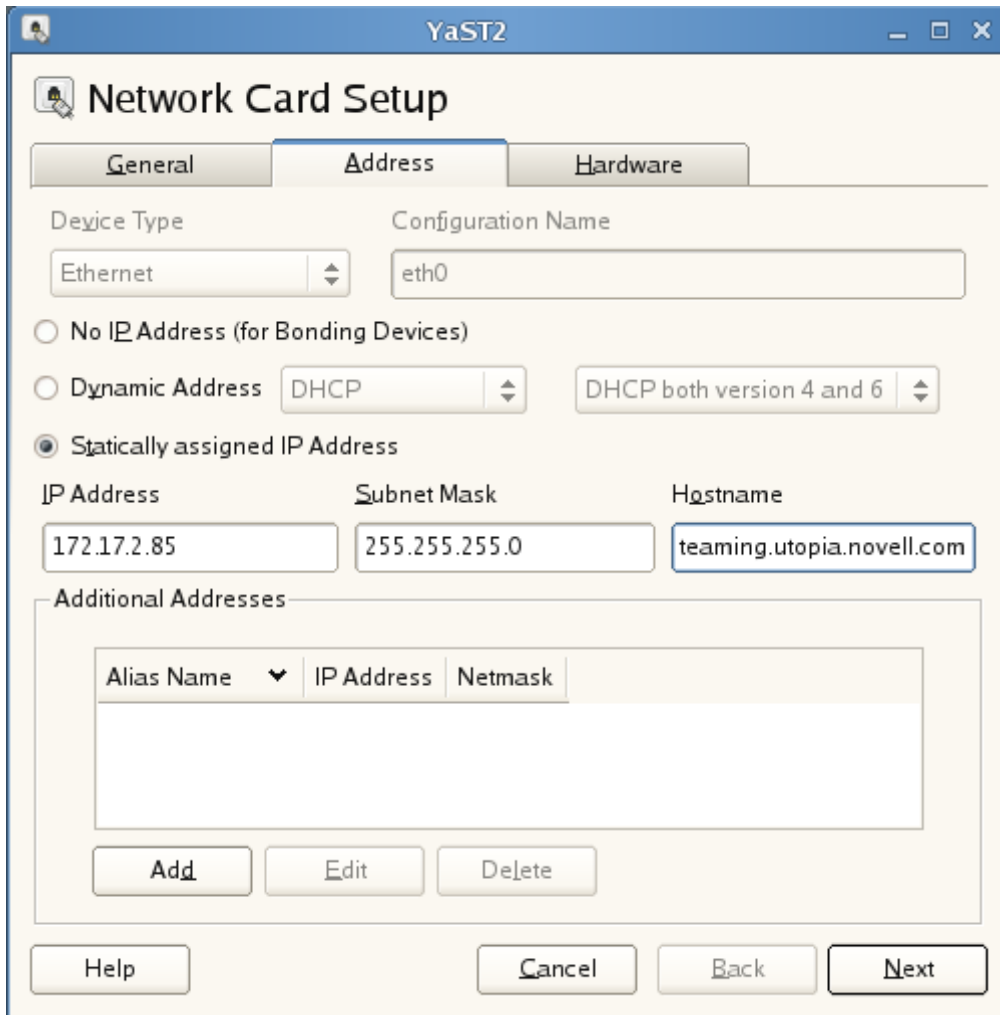
To change the IP address, you need to run the Network Card configuration tool. Use the icon on the desktop, because this also starts the firewall after the network configuration. The firewall needs to be running, because there are a number of port redirection rules that must be run to ensure that Teaming runs correctly. Most of the information required in this section is available from your network administrator.



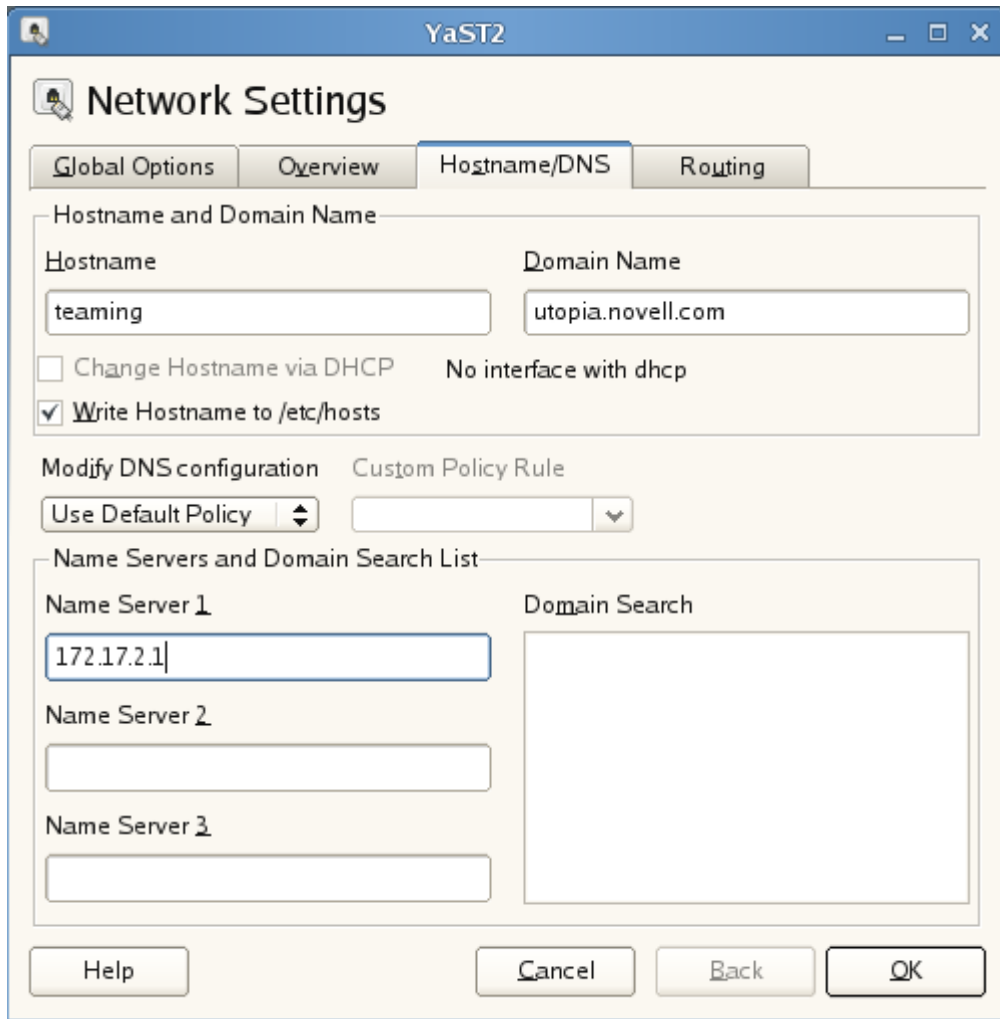
1. Double-click the *Network Settings* icon on the desktop.



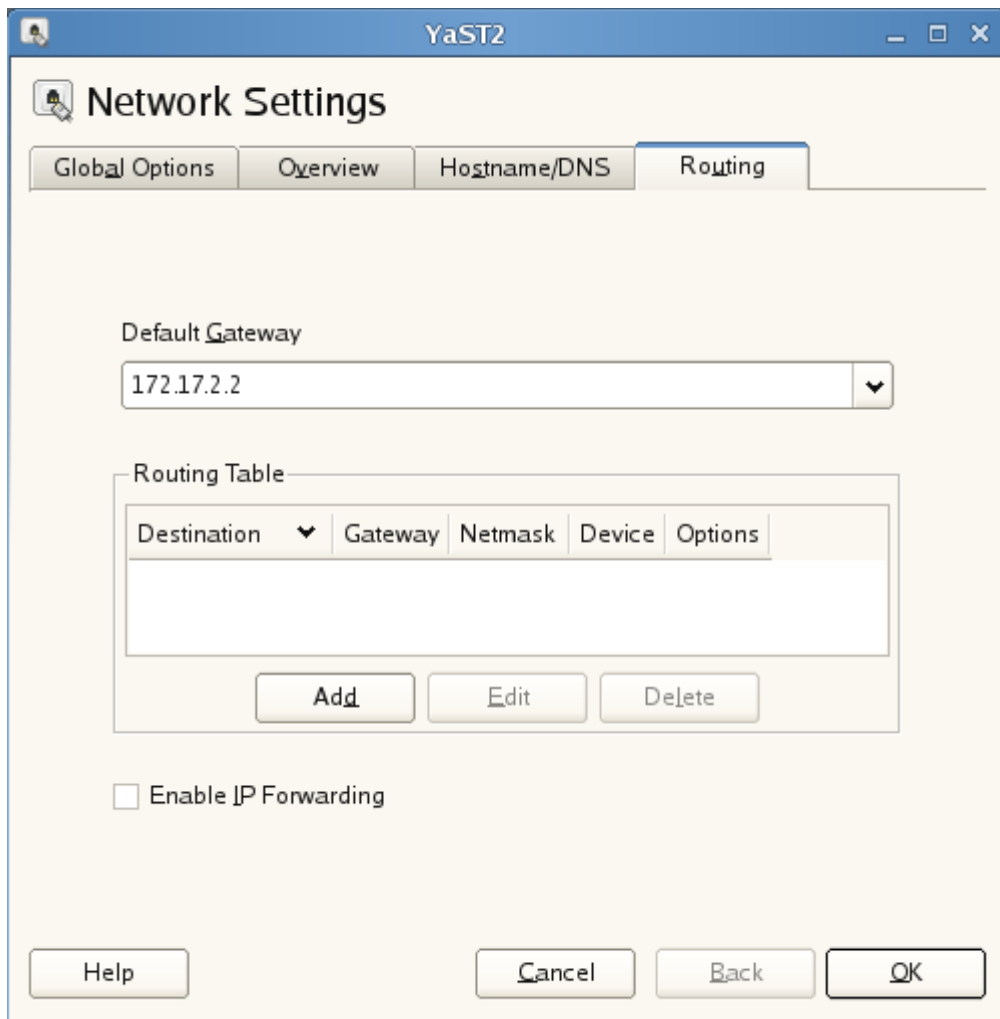
2. Ensure that your network card is selected.
3. Click *Edit*.



3. Select *Statically assigned IP Address*.
4. Specify the IP address, subnet mask, and hostname that you want to use for this server.
5. Click *Next*.
6. Click the *Hostname/DNS* tab.



7. Specify the hostname for this server, such as `teaming`.
8. Specify the domain name for this server. This is your organizational domain name. You might want to ensure that a DNS record exists for this host.
9. Specify the DNS name servers for this server.
10. Click the *Routing* tab.

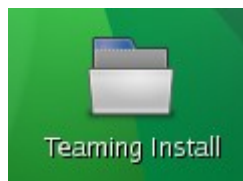


11. Specify the default gateway address.
12. Click *OK* to save the network configuration.

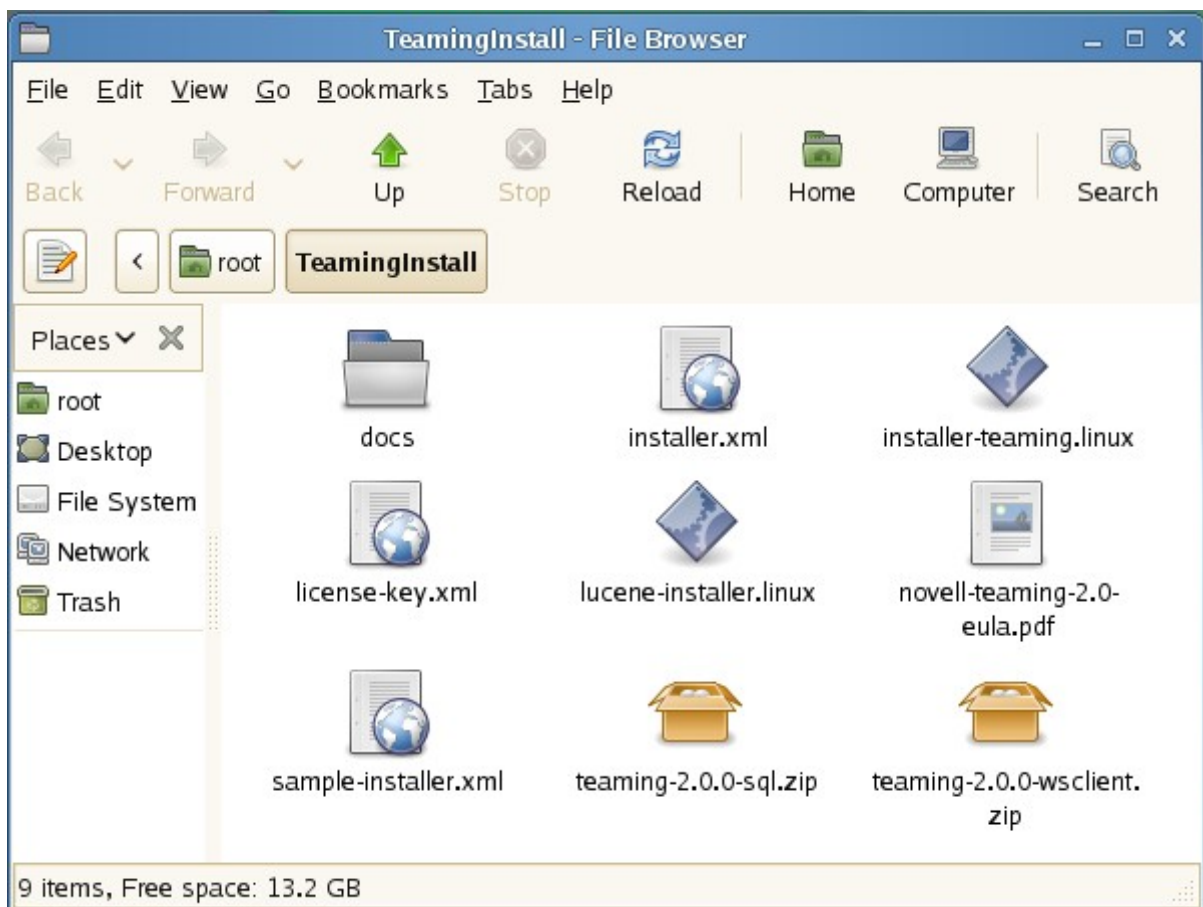
Copying Your License File

The Teaming image comes with a 60-day evaluation license file. If you are planning to use this default license, continue to the next section about running the Teaming installation.

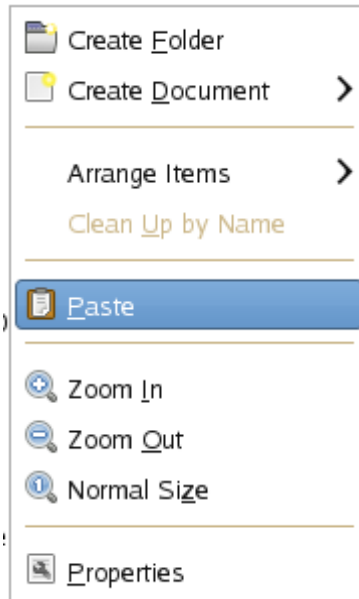
However, you might already have your own Teaming license file that you want to use with this installation. Make sure that your Teaming license file has been renamed as `license-key.xml` on the host machine. Right-click the `license-key.xml` file on the host machine, then click *Copy* to copy it to the clipboard in preparation for pasting it into the Teaming image.



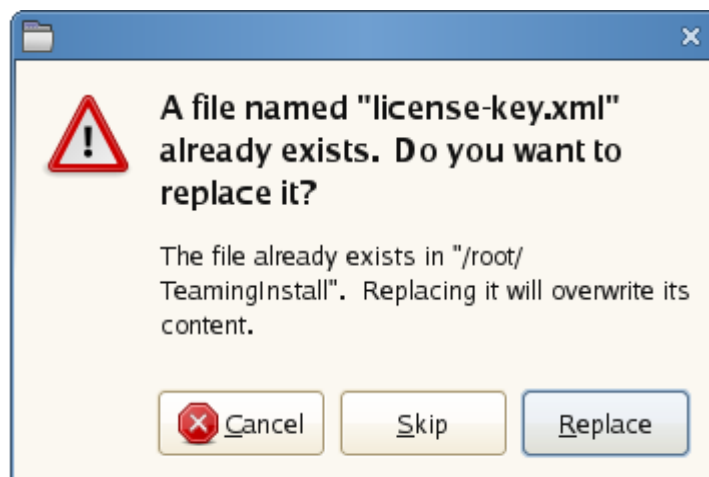
1. In the Teaming image, double-click the *Teaming Directory* icon on the desktop. This displays the File Browser with a directory view of the Teaming installation directory, which is `/root/TeamingInstall`.



2. Right-click in the `/root/TeamingInstall` directory in the File Browser.



3. Click *Paste* to copy the `license-key.xml` file from the clipboard into the Teaming image.



4. If you are prompted to replace the license file, click *Replace*.
5. Close the File Browser.

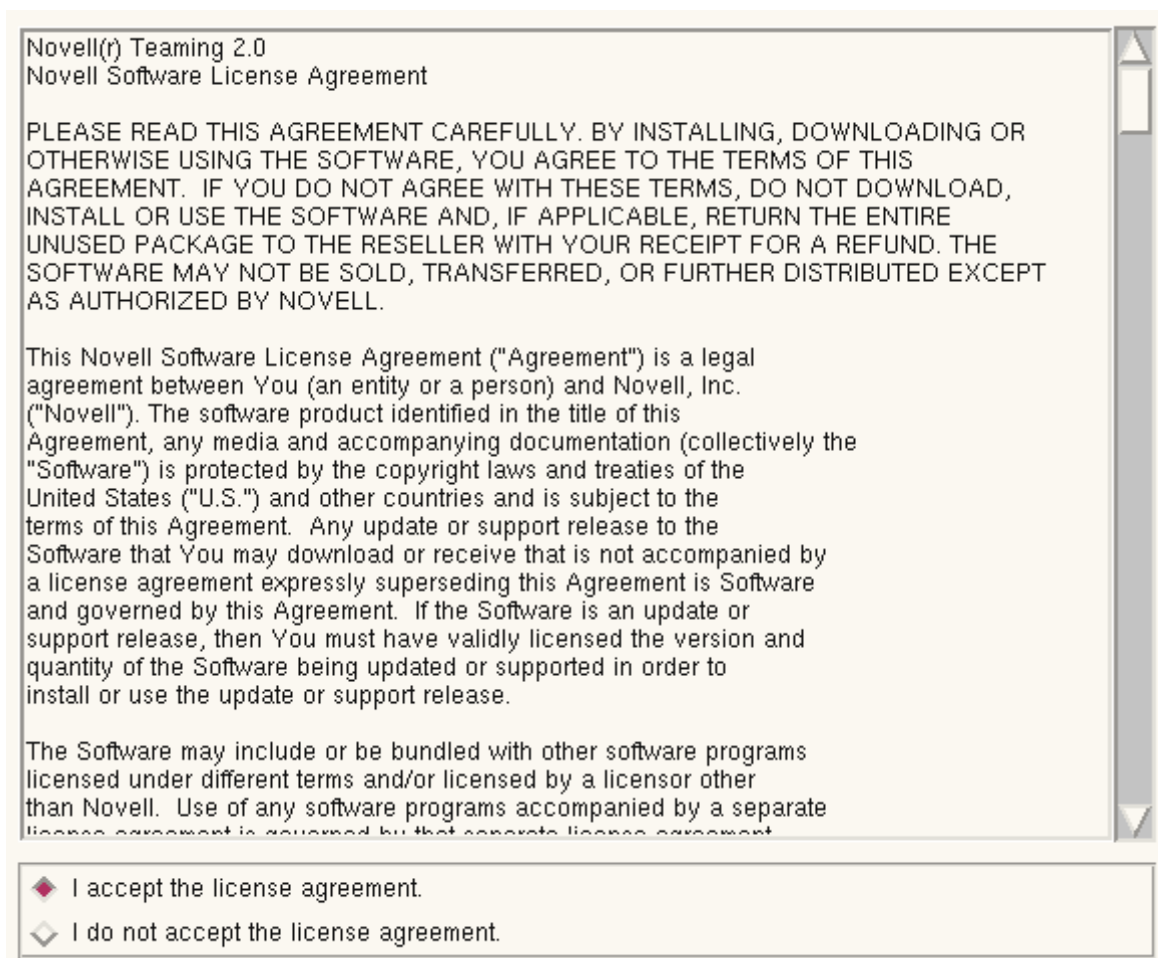
You are now ready to run the Teaming installation.

Running the Teaming Installation

The Teaming installation is a graphical installation where you can use the default settings on most pages. This section explains how to add your specific environment's configuration settings to the Teaming image.



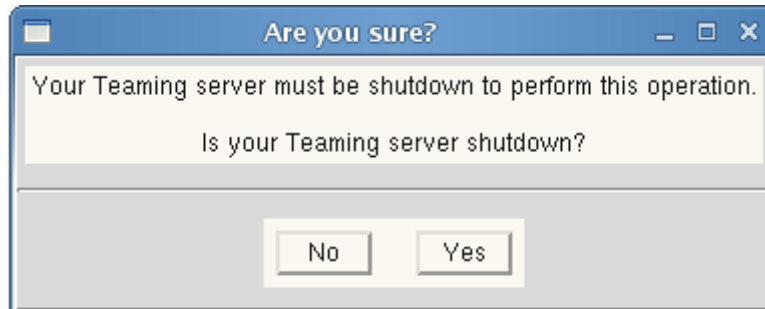
1. Double-click the *Teaming Install* icon on the desktop. This icon runs a shell script that stops Teaming, runs the installation, then restarts Teaming.



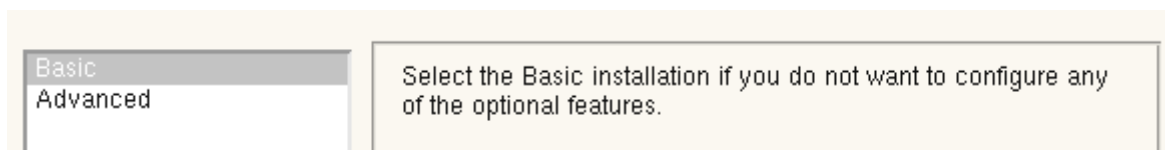
2. Read the license agreement, then if you agree with the license, select *I accept the license agreement*.
3. Click *Next*.

- New installation
- Update software and settings
- Reconfigure settings

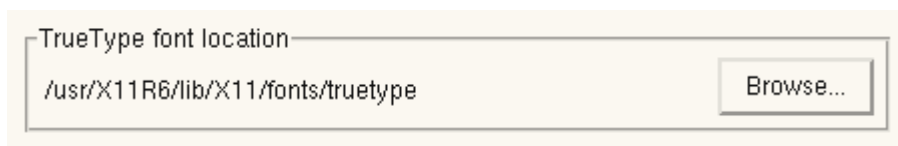
4. Select *Reconfigure settings* rather than selecting a new installation.
5. Click *Next*.



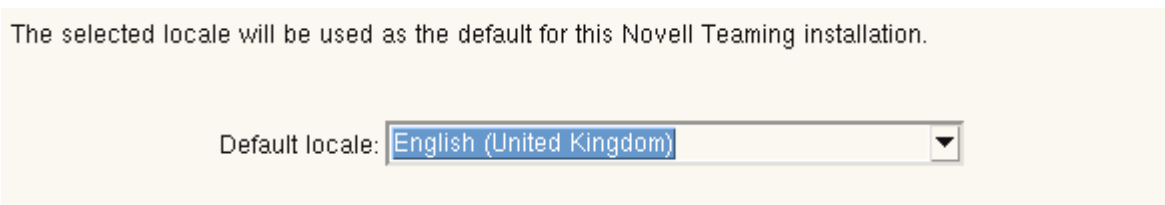
6. When prompted about whether the Teaming server is shut down, click *Yes*.



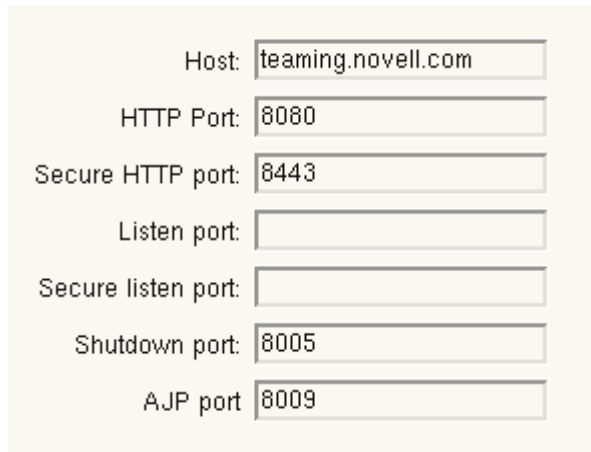
7. Select *Basic* as the installation type and click *Next*.



8. Leave the font location at the default and click *Next*.



9. Select your locale from the drop-down list.
10. Click *Next*.

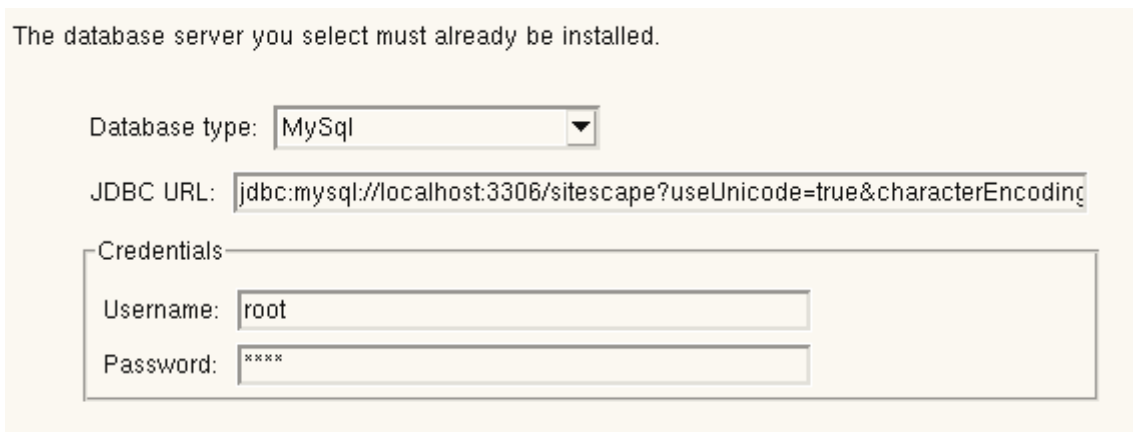


A screenshot of a configuration form for a Teaming server. The form has a light yellow background and contains several input fields with labels to their left. The fields are: Host (teaming.novell.com), HTTP Port (8080), Secure HTTP port (8443), Listen port (empty), Secure listen port (empty), Shutdown port (8005), and AJP port (8009).

11. Specify the hostname for the Teaming server. This might be something like `teaming.mycompany.com`. It is best that you have a DNS record pointing to this. This is the address you use to access the Teaming site from a browser.
12. Leave the ports at the default. For security reasons, the process running Teaming cannot listen on ports below 1024, but there are port redirection rules already in place, so that your users are not affected.

Teaming does work over HTTPS, but the default certificate is self-minted and might give a security error. If you want to install a certificate of your own, see “[Securing HTTP Connections](#)” in “[Site Security](#)” in the *Novell Teaming 2.0 Administration Guide*.

13. Click *Next*.



A screenshot of a database configuration form. At the top, it says "The database server you select must already be installed." Below this, there are several input fields: Database type (a dropdown menu showing "MySql"), JDBC URL (jdbc:mysql://localhost:3306/sitescape?useUnicode=true&characterEncoding), and a section titled "Credentials" containing Username (root) and Password (****).

14. Leave the database settings as they are.
15. Click *Next*.

Java Home: /usr/lib/jvm/java [Browse...]

JVM heap size: 1g

16. Leave the Java* settings as they are and click *Next*.

Protocol: smtp

Host: smtp.novell.com

Port: 25

Time zone: Europe/London

Username: teaming@novell.com

Password:

Authentication required

Allow sending email to all users

17. Specify the address of your mail relay host. This is a server that relays SMTP messages to your internal e-mail system and to external users if you have them in the system. You can get this information from your e-mail administrator.

18. Select the time zone for time stamping e-mail messages sent from the Teaming site.

19. Specify the e-mail address that Teaming e-mail will come from, such as teaming@mycompany.com.

20. If you need credentials to use the relay host, specify the credentials to use if you are going to send e-mail to external users.

- a. Specify the password.
- b. Ensure that *Authentication required* is selected

21. Click *Next*.

Enable internal SMTP e-mail server

SMTP bind address

SMTP port

Announce TLS

22. If you plan to e-mail information into Teaming folders:

- a. Select *Enable internal SMTP e-mail server*.
- b. Specify the address of the server. You should have an MX record set up for this address.
- c. Leave the port at 2525. The standard SMTP port redirects to this for security reasons.

23. Click *Next*.

24. Click *Install*.

Teaming should now install.

25. Click *Finish*.

You do not need to start Teaming manually, because this is done for you.

You have now succeeded in installing Teaming. Next, you need to add some users and configure your Teaming system.

Accessing Teaming

After you install Teaming, you need to ensure that you can authenticate to the server.



1. Launch a supported browser, such as Firefox*, and specify the Teaming server address. The browser provided on the server is configured with the Teaming site as its home page. If the Teaming login is not displayed, try connecting to the server on port 8080. This is an indication that the firewall and hence the redirection are not running. When you first access the page, it might take a minute or so to load, because it has not been cached.

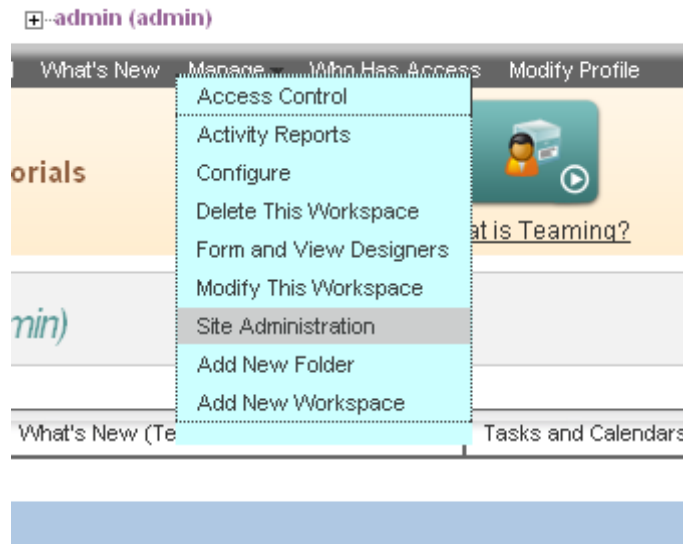
The image shows a screenshot of the Novell Teaming 2.0 login interface. At the top left is a circular icon containing three stylized human figures. To the right of this icon, the text "Novell® Teaming 2.0" is displayed in a bold, dark blue font. Below the title, there are two input fields: "User Id" and "Password". At the bottom right of the form are two buttons labeled "OK" and "Reset". A small copyright notice at the bottom of the page reads "© Copyright 2007-2009 Novell, Inc. All rights reserved."

2. Type the Teaming administrator's login name. This is `admin`.
3. Type the administrator default password. This is also `admin`.
4. Click *OK* to log in to the Teaming site.

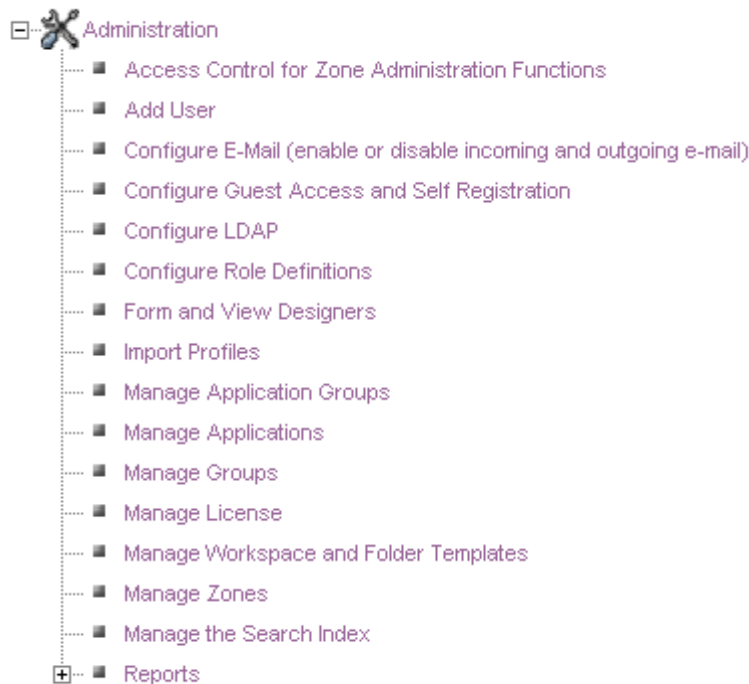
You should now have successfully logged in to the Teaming site.

Manually Adding Users

Users can be added to Teaming either manually or through an LDAP directory. If you plan to use an existing LDAP directory, for instance eDirectory or Active Directory, then skip to the next section. Continue with this section to add Teaming users manually.



1. On the Workspace toolbar, click *Manage*.
2. On the *Manage* menu, click *Site administration*.



3. In the list of administrative tasks, click *Add User*.

User

User Id

New Password

Confirm New Password

First Name **Middle Name** **Last Name**

E-Mail Address **Mobile E-Mail Address** **Text Messaging E-Mail Address**

Conferencing User Name

Phone

Time zone

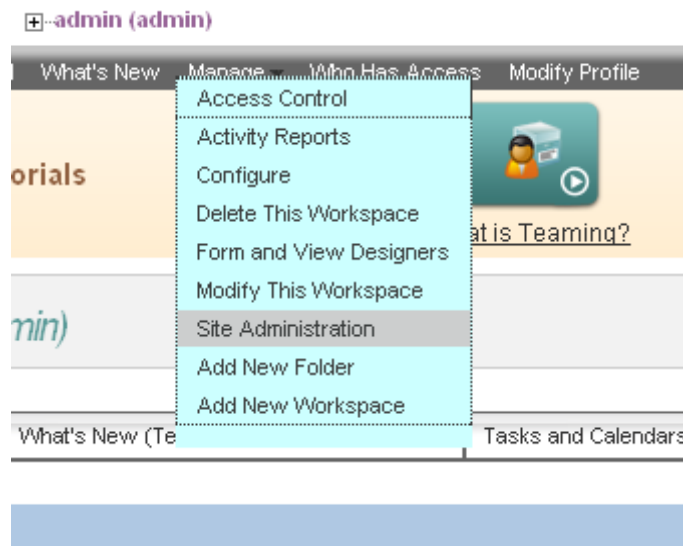
Locale

Picture

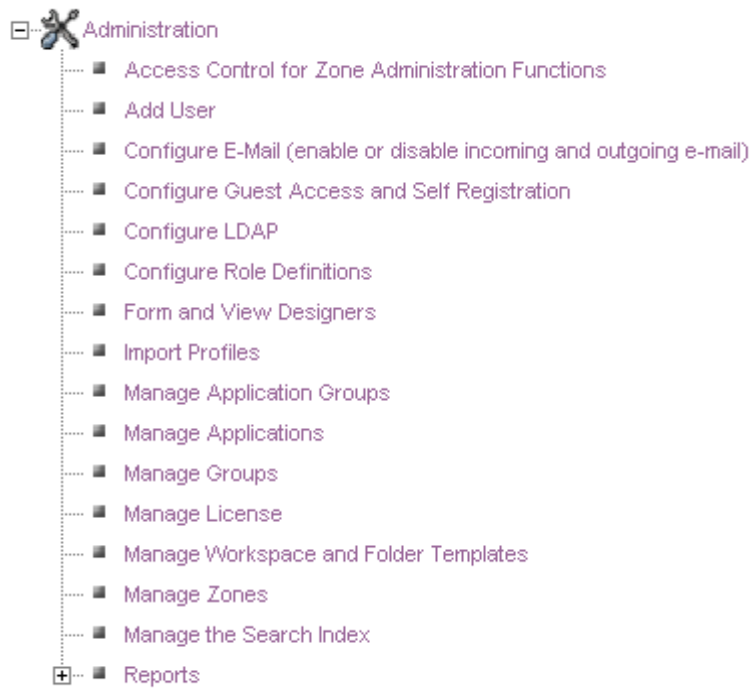
4. Specify the user information.
5. Click *OK*.
6. Add additional users as needed.
7. When you have finished, click *Close* to return to the Teaming administrator's workspace.

Adding LDAP Users to Your Teaming Site

You can import users into Teaming from an LDAP directory. Much of the information required in this section is available from your network administrator. LDAP authentication is added through the Site Administration menu.



1. On the Workspace toolbar, click *Manage*.
2. On the *Manage* menu, click *Site Administration*.



3. In the list of administrative tasks, click *Configure LDAP*.
4. On the Configure LDAP Synchronization page, click *Add a New LDAP Connection*.
5. Provide the LDAP information that you have obtained from your network administrator.

Configuration for: New LDAP connection

The LDAP server URL format is, ldap://host:port For example: ldap://localhost:389

LDAP server URL

User DN

Password

Users

LDAP Attribute That Identifies the User

In the box below, map the internal identifiers to the LDAP attribute names of the user record. Use the following syntax: internalID=ldapAttName

emailAddress=mail
 firstName=gn
 firstName=givenName
 lastName=sn
 lastName=surname
 phone=telephoneNumber
 description=description

Base DN

Filter

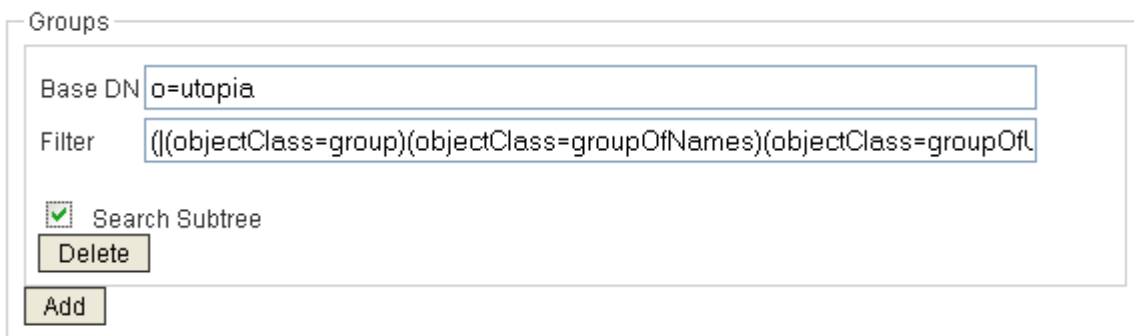
Search Subtree

Groups

6. Specify the LDAP server URL in the form [ldap://server:389](#). If you want to use secure LDAP, see “[Securing LDAP Synchronization](#)” in “[Site Security](#)” in the [Novell Teaming 2.0 Administration Guide](#).
7. For the user DN, specify the LDAP user that will be used to attach to the LDAP server. This is in LDAP notation, which uses a comma to separate the parts of the address. This user needs read access to the directory and the attributes that will be imported.
8. Specify the password of the LDAP user.
9. Leave *LDAP attribute that identifies the user* set to `uid` if you are running against eDirectory. All users need to have a unique ID configured, but this should be done by default in eDirectory. If your LDAP directory has unique common names, change this to `cn`.

If you are running against Microsoft Active Directory then, depending on your environment, you might want to change this value to `sAMAccountName`.

10. Specify the base DN of the context that holds the users.
11. Leave the filter at the default. If you want to limit access to users in a specific eDirectory group, see “[User and GroupWise Object Locations](#)” in “[Basic Installation](#)” in the [Novell Teaming 2.0 Installation Guide](#).
12. Select *Search subtree* if you want subcontexts to be searched.
13. Click *Add* in the *Users* section if you want to add another context or LDAP directory.
14. If you want to import groups from the LDAP directory, click *Add* in the *Groups* section.



The screenshot shows a window titled "Groups" with the following fields and controls:

- Base DN:
- Filter:
- Search Subtree
-
-

15. Specify the base DN of the context that holds the groups.
16. Leave the filter at the default.
17. Select *Search subtree* if you want subcontexts to be searched.
18. Click *Add* again in the *Groups* section if you want to add another context.

- Enable Schedule
- Run Immediately

19. To schedule a periodic synchronization, select *Enable Schedule*.
20. To import all users now, select *Run immediately*.

Every Day
 Weekly (on the days selected below)

 Sun Mon Tue Wed Thu Fri Sat

At Time 01 : 00 GMT
 Repeat Every 0.25 Hours

21. In the *Schedule* section, select *Every Day*.
22. Select when to synchronize, such as once a day at a specific time.

Users

Synchronize User Profiles
 Register LDAP User Profiles Automatically
 Delete Users That are not in LDAP
 When Deleting Users, Delete Associated User Workspaces and Content

Use the following time zone when creating new users.

GMT

23. Select *Synchronise User Profiles*.
24. Select *Register LDAP User Profiles Automatically*.
25. If you have users in Teaming that are not in LDAP, do not select *Delete Users that are not in LDAP*.
26. If you want to delete old user data, select *When Deleting Users, Delete Associated User Workspaces and Content*.
27. Select the default time zone for new users.
28. If you want to synchronize groups, select *Synchronize group profiles*.

Groups

- Synchronize Group Profiles
- Register LDAP Group Profiles Automatically
- Synchronize Group Membership
- Delete Local Groups That Are Not in LDAP

29. Select *Register LDAP Group Profiles Automatically*.

30. Select *Synchronize Group Membership*.

31. If you are not using local groups in Teaming, select *Delete Local Groups That Are Not in LDAP*.

Local user accounts

- Allow Login for Local User Accounts, (i.e., user accounts not in LDAP)

32. If you are using non-LDAP users (that is, those that you have created manually), select *Allow Login for Local User Accounts (i.e. user accounts not in LDAP)*.

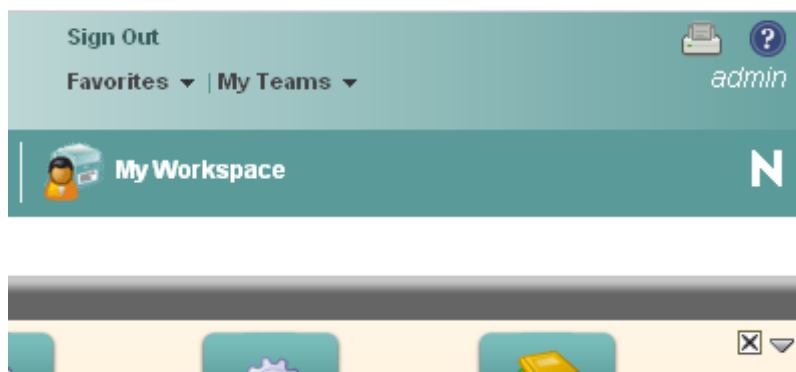
33. Click *Apply*.

Because you selected *Run Immediately* in Step 20, LDAP synchronization occurs, and imported users and groups are listed.

34. Click *Close* to close the Configure LDAP Synchronization page.

35. Click *Close* again to close the Site Administration page.

36. If you want to log out of the Teaming site, click *Sign out*.



Now you need to check to make sure that the configuration is working.

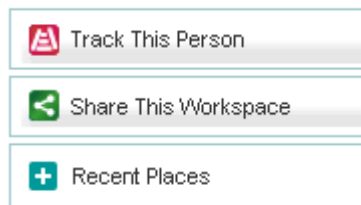
Checking Your Teaming Configuration

1. Launch a browser on a workstation and enter the Teaming server address.

The Teaming login box should appear. This indicates that the network configuration is correct.



2. Enter the username and password for one of the users in your LDAP directory. This shows that LDAP synchronization has been successful.
3. In the sidebar, click *Share this workspace*.



4. Specify a user to share with.

Who would you like to share this with?

Select the users to share this with

People

5. Provide an explanatory comment.
6. Click *OK*.



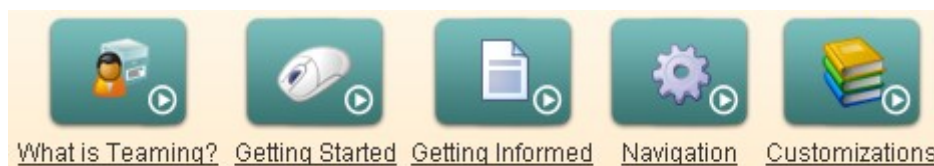
7. Click *Close*.

If you receive a message stating that the e-mail was successfully sent, and if the user receives the e-mail, then the outbound e-mail is working.

Conclusion

You should now have a working Teaming server running on your network. Because you configured LDAP synchronization, any user within the synchronized LDAP context can log in to the Teaming site, assuming that you have the correct number of Teaming licences.

You can now start to use Teaming. A good place to start is the Video Tutorials in your home workspace.



Complete product documentation is found at <http://www.novell.com/documentation/teaming2/>.

Have fun with Novell Teaming!

Legal Notices

Novell, Inc. makes no representations or warranties with respect to the contents or use of this documentation, and specifically disclaims any express or implied warranties of merchantability or fitness for any particular purpose. Further, Novell, Inc. reserves the right to revise this publication and to make changes to its content, at any time, without obligation to notify any person or entity of such revisions or changes.

Further, Novell, Inc. makes no representations or warranties with respect to any software, and specifically disclaims any express or implied warranties of merchantability or fitness for any particular purpose. Further, Novell, Inc. reserves the right to make changes to any and all parts of Novell software, at any time, without any obligation to notify any person or entity of such changes.

Any products or technical information provided under this Agreement may be subject to U.S. export controls and the trade laws of other countries. You agree to comply with all export control regulations and to obtain any required licenses or classification to export, re-export, or import deliverables. You agree not to export or re-export to entities on the current U.S. export exclusion lists or to any embargoed or terrorist countries as specified in the U.S. export laws. You agree to not use deliverables for prohibited nuclear, missile, or chemical biological weaponry end uses. Please refer to the [Novell International Trade Services Web page](#) for more information on exporting Novell software. Novell assumes no responsibility for your failure to obtain any necessary export approvals.

Copyright © 2009 Novell, Inc. All rights reserved. No part of this publication may be reproduced, photocopied, stored on a retrieval system, or transmitted without the express written consent of the publisher.

Novell, Inc. has intellectual property rights relating to technology embodied in the product that is described in this document. In particular, and without limitation, these intellectual property rights may include one or more of the U.S. patents listed on the [Novell Legal Patents Web page](#) and one or more additional patents or pending patent applications in the U.S. and in other countries.

For Novell trademarks, see the [Novell Trademark and Service Mark list](#).

All third-party trademarks are the property of their respective owners.