

# Novell ZENworks® Configuration Management

10

[www.novell.com](http://www.novell.com)

September 21, 2007

PERSONALITY MIGRATION  
INTEGRATION GUIDE



Novell®

## Legal Notices

Novell, Inc., makes no representations or warranties with respect to the contents or use of this documentation, and specifically disclaims any express or implied warranties of merchantability or fitness for any particular purpose. Further, Novell, Inc., reserves the right to revise this publication and to make changes to its content, at any time, without obligation to notify any person or entity of such revisions or changes.

Further, Novell, Inc., makes no representations or warranties with respect to any software, and specifically disclaims any express or implied warranties of merchantability or fitness for any particular purpose. Further, Novell, Inc., reserves the right to make changes to any and all parts of Novell software, at any time, without any obligation to notify any person or entity of such changes.

Any products or technical information provided under this Agreement may be subject to U.S. export controls and the trade laws of other countries. You agree to comply with all export control regulations and to obtain any required licenses or classification to export, re-export or import deliverables. You agree not to export or re-export to entities on the current U.S. export exclusion lists or to any embargoed or terrorist countries as specified in the U.S. export laws. You agree to not use deliverables for prohibited nuclear, missile, or chemical biological weaponry end uses. See the [Novell International Trade Services Web page \(http://www.novell.com/info/exports/\)](http://www.novell.com/info/exports/) for more information on exporting Novell software. Novell assumes no responsibility for your failure to obtain any necessary export approvals.

Copyright © 2007 Novell, Inc. All rights reserved. No part of this publication may be reproduced, photocopied, stored on a retrieval system, or transmitted without the express written consent of the publisher.

Novell, Inc., has intellectual property rights relating to technology embodied in the product that is described in this document. In particular, and without limitation, these intellectual property rights may include one or more of the U.S. patents listed on the [Novell Legal Patents Web page \(http://www.novell.com/company/legal/patents/\)](http://www.novell.com/company/legal/patents/) and one or more additional patents or pending patent applications in the U.S. and in other countries.

Novell, Inc.  
404 Wyman Street, Suite 500  
Waltham, MA 02451  
U.S.A.  
[www.novell.com](http://www.novell.com)

*Online Documentation:* To access the latest online documentation for this and other Novell products, see the [Novell Documentation Web page \(http://www.novell.com/documentation\)](http://www.novell.com/documentation).

## **Novell Trademarks**

For Novell trademarks, see [the Novell Trademark and Service Mark list \(http://www.novell.com/company/legal/trademarks/tmlist.html\)](http://www.novell.com/company/legal/trademarks/tmlist.html).

## **Third-Party Materials**

All third-party trademarks are the property of their respective owners.



# Contents

<b>About This Guide</b>	<b>7</b>
<b>1 What Is Novell ZENworks Personality Migration?</b>	<b>9</b>
<b>2 Installing ZENworks Personality Migration</b>	<b>11</b>
<b>3 Preparing the Server for Personality Migration</b>	<b>13</b>
3.1 Providing Rights to the Desktop DNA Template Store . . . . .	13
3.2 Creating the Personality Migration Personality Store . . . . .	14
3.2.1 Creating the Personality Store on a NetWare Server . . . . .	14
3.2.2 Creating the Personality Store on a Windows Server . . . . .	14
3.2.3 Creating the Personality Store on a Linux Server . . . . .	14
<b>4 Preparing Workstations for Personality Migration</b>	<b>15</b>
4.1 Personality Migration Management Workstation . . . . .	15
4.2 User Workstations . . . . .	15
4.3 User Login Restriction . . . . .	16
<b>5 Using the DNA Template Editor to Create the Template</b>	<b>17</b>
5.1 Creating a DNA Template . . . . .	17
5.2 Configuring the Template . . . . .	18
5.2.1 Configuring Users Settings . . . . .	18
5.2.2 Configuring System Settings . . . . .	20
5.2.3 Configuring Applications Settings . . . . .	21
5.2.4 Configuring Files Settings . . . . .	22
5.2.5 Adding Drive Destinations . . . . .	23
5.3 Working with Filters . . . . .	24
5.4 Re-enabling the Muscle Migration Function. . . . .	28
<b>6 Creating the Bundle to Collect the Personality</b>	<b>31</b>
<b>7 Creating the Application Object to Apply the Personality</b>	<b>35</b>
<b>8 Upgrading Personality Migration</b>	<b>37</b>



# About This Guide

This *Novell ZENworks Configuration Personality Migration Integration Guide* consists of conceptual information to help you install and use Novell® ZENworks® Personality Migration.

The sections include:

- ♦ “What Is Novell ZENworks Personality Migration?” on page 9
- ♦ “Installing ZENworks Personality Migration” on page 11
- ♦ “Preparing the Server for Personality Migration” on page 13
- ♦ “Preparing Workstations for Personality Migration” on page 15
- ♦ “Using the DNA Template Editor to Create the Template” on page 17
- ♦ “Creating the Bundle to Collect the Personality” on page 31
- ♦ “Creating the Application Object to Apply the Personality” on page 35

## Audience

This guide is intended for network administrators and IT professionals who manage network resources, and who want to use ZENworks Personality Migration to preserve the applications and configurations on network workstations when users begin using new hardware.

## Feedback

We want to hear your comments and suggestions about this manual and the other documentation included with this product. Please use the User Comment feature at the bottom of each page of the online documentation, or go to [www.novell.com/documentation/feedback.html](http://www.novell.com/documentation/feedback.html) (<http://www.novell.com/documentation/feedback.html>) and enter your comments there.

## Documentation Updates

See the [Novell Documentation Web site](http://www.novell.com/documentation) (<http://www.novell.com/documentation>) for the most current installation and administration information.

## Additional Documentation

The following PDF documents provide detailed information about Novell ZENworks Personality Migration:

- ♦ Getting Started Guide ([http://www.novell.com/documentation/zcm10/pdfdoc/zcm10\\_personality\\_migration/J020741E.pdf](http://www.novell.com/documentation/zcm10/pdfdoc/zcm10_personality_migration/J020741E.pdf))
- ♦ Release Impact Guide ([http://www.novell.com/documentation/zcm10/pdfdoc/zcm10\\_personality\\_migration/J020751E.pdf](http://www.novell.com/documentation/zcm10/pdfdoc/zcm10_personality_migration/J020751E.pdf))
- ♦ Inside Scripting Guide ([http://www.novell.com/documentation/zcm10/pdfdoc/zcm10\\_personality\\_migration/J020761E.pdf](http://www.novell.com/documentation/zcm10/pdfdoc/zcm10_personality_migration/J020761E.pdf))
- ♦ Best Practices Guide ([http://www.novell.com/documentation/zcm10/pdfdoc/zcm10\\_personality\\_migration/J020771E.pdf](http://www.novell.com/documentation/zcm10/pdfdoc/zcm10_personality_migration/J020771E.pdf))

- ♦ Reference Guide ([http://www.novell.com/documentation/zcm10/pdfdoc/zcm10\\_personality\\_migration/J020781E.pdf](http://www.novell.com/documentation/zcm10/pdfdoc/zcm10_personality_migration/J020781E.pdf))

You can also read an article on the ZENworks Cool Solutions Web site about Personality Migration. For more information, see [Policy-Driven Personality Migration \(http://www.novell.com/cool solutions/zenworks/features/a\\_personality\\_mig\\_zw.html\)](http://www.novell.com/cool solutions/zenworks/features/a_personality_mig_zw.html).

## Documentation Conventions

In Novell documentation, a greater-than symbol (>) is used to separate actions within a step and items in a cross-reference path.

A trademark symbol (®, ™, etc.) denotes a Novell trademark. An asterisk (\*) denotes a third-party trademark.

When a single pathname can be written with a backslash for some platforms or a forward slash for other platforms, the pathname is presented with a backslash. Users of platforms that require a forward slash, such as Linux\* or UNIX\*, should use forward slashes as required by your software.



# What Is Novell ZENworks Personality Migration?

# 1

Novell® ZENworks® Personality Migration is part of the Novell ZENworks Configuration Management product line.

Novell has partnered with Computer Associates International, Inc. (CA) to provide personality migration. CA provides ZENworks Personality Migration, powered by Unicenter® Desktop DNA®, to create the personality files. Novell provides ZENworks Configuration Management to distribute bundles to collect, store, and apply personality settings to assigned workstations.

The process of integrating Novell ZENworks Configuration Management and ZENworks Personality Migration consists of installing Desktop DNA, setting up a network directory structure to store Desktop DNA templates and personality files, creating the DNA template, and finally creating two Configuration Management Directive bundles. The first Directive bundle collects the DNA personality from assigned workstations and stores the files in a network location. The second Directive bundle pushes and applies the DNA personality to associated workstations.

Desktop DNA lets you perform faster and more efficient desktop migrations, upgrades, and backups. It uses the industry's only patented technology for customizing and automating the migration process of application and personal settings, applications, and data files. For more information about Computer Associates and Unicenter Desktop DNA, see the [Computer Associates Operations Management Web site \(http://www3.ca.com/Solutions/Product.asp?ID=4920\)](http://www3.ca.com/Solutions/Product.asp?ID=4920).

ZENworks Personality Migration provides enterprise customers the fastest return on investment by saving time and resources at every step of the migration process. Whether you are migrating to a newer version of the Windows® operating system, replacing or refreshing old machines, or building a desktop recovery process, ZENworks Personality Migration helps your organization increase IT staff productivity, reduce user downtime, and save money.

Personality Migration lets you migrate the following:

- ♦ **User Accounts:** User profiles for the logged-on user or for multiple users.
- ♦ **Desktop:** Shortcuts, taskbar, wallpaper, display settings, and more.
- ♦ **Network Settings:** Dial-up settings, local network settings, TCP/IP and DNS settings, mapped network drives, folder and directory sharing, and more.
- ♦ **Printer Settings:** Printer settings are migrated if printer drivers are compatible with the destination system's operating system.
- ♦ **Applications:** ZENworks Personality Migration gives you the option to migrate any application on the source system.
- ♦ **Application Settings:** Preferences, templates, bookmarks, address books, macros, and other settings.
- ♦ **Files:** Any file can be migrated by selecting it from a check-box tree, or by locating it with one or more search filters.
- ♦ **Folders:** You can migrate a folder and its contents or you can migrate entire folder structures.

ZENworks 7 Personality Migration supports the following migration types:

- ♦ **Real-Time:** Real-Time migrations take place over a TCP/IP network and transfer a workstation's personality directly from the old workstation to a new workstation. This type of migration is useful if you are replacing an old workstation with a new workstation. This type of migration is not the focus of this guide. For more information on real-time migration, refer to the Help topics in the Desktop DNA program or see the Novell ZENworks Personality Migration Reference Guide ([http://www.novell.com/documentation/zcm10/pdfdoc/zcm10\\_personality\\_migration/J020781E.pdf](http://www.novell.com/documentation/zcm10/pdfdoc/zcm10_personality_migration/J020781E.pdf)).
- ♦ **Deferred:** Deferred migrations save your personality file on your desktop, local or network drive, writable CD/DVD, or any external media. You can transfer your personality file to your destination workstation using a Desktop Management Application object. This type of migration is useful if you are not changing the workstation, but simply installing a new operating system or implementing a disaster-recovery process. The focus of this guide is to help you use ZENworks Personality Migration to create a template to collect users' DNA files, store them in a network location, and then collect and apply the DNA files using two ZENworks Configuration Management Directive bundles.

# Installing ZENworks Personality Migration

# 2

You can run Novell® ZENworks® Configuration Management Personality Migration from a Windows server or from a Windows workstation. You use either the server or the workstation to open the Desktop DNA Template Editor to create the personality templates that collect users' workstation personalities.

If you want to run the Desktop DNA Template Editor from a Windows server that is accessible to users, follow the directions in this section. If you want to install Personality Migration on a Windows server, you should install it in the \ddna directory that you previously created so that the program files, templates, and personality files are in one location. However, if you do not want to run the Template Editor from the server, the steps you performed in [Section 3.1, “Providing Rights to the Desktop DNA Template Store,” on page 13](#) copied the necessary files to the server.

You can also install Personality Migration on the Personality Migration management workstation from which you will create personality templates.

---

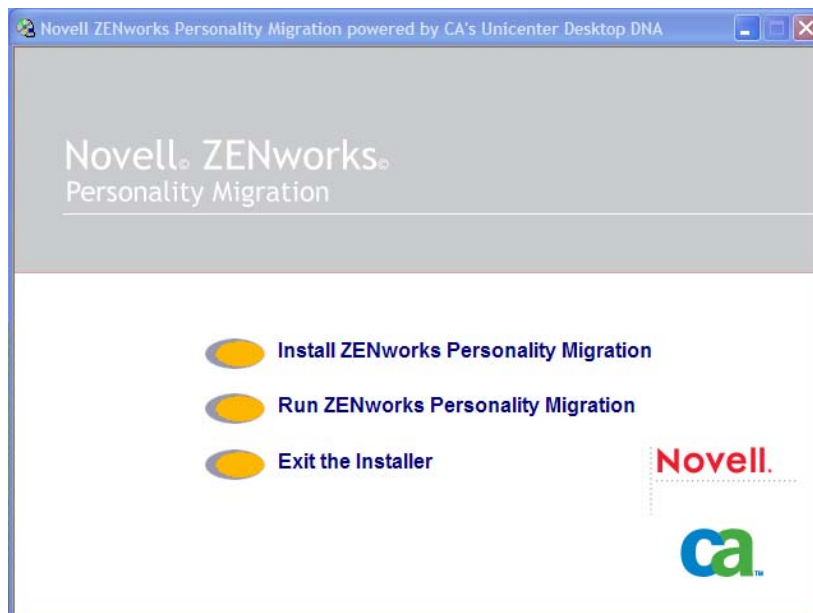
**IMPORTANT:** ZENworks Personality Migration is supported on 32-bit devices only.

---

To install Personality Migration:

- 1 On the target device, open a Web browser to the following URL:  
  
`http://server/zenworks-setup`  
  
where *server* is the DNS or IP address of a ZENworks Server.
- 2 Click the *Administrative Tools* tab.
- 3 Save the .zip file to your hard drive. For these instructions, we created and saved the file to the c:\ddna directory.
- 4 Extract the .zip file to the c:\ddna directory.
- 5 Double-click the ddna\cd\ddnaautorun.exe file to start the installation process.

- 6 Click *Install ZENworks Personality Migration*.



- 7 Follow the prompts in the installation program dialog boxes to complete the installation.
- For detailed installation instructions, see the ZENworks Personality Migration Getting Started Guide ([http://www.novell.com/documentation/zcm10/pdfdoc/zcm10\\_personality\\_migration/J020741E.pdf](http://www.novell.com/documentation/zcm10/pdfdoc/zcm10_personality_migration/J020741E.pdf)).

# Preparing the Server for Personality Migration

# 3

A functioning Novell® ZENworks® Configuration Management environment is a prerequisite for the ZENworks/Desktop DNA personality migration integration. This document is written with ZENworks Configuration Management as the basis; the concepts could be used with earlier versions. For installation instructions for ZENworks Configuration Management, see the *ZENworks 10 Installation Guide*.

In the following sections, you create a directory structure to store the Desktop DNA templates and DNA personality files. We recommend that you control Rights or Permissions to these directories by using groups.

The directories you create can be placed on a single server (the DNA server) or on multiple servers, depending on your LAN/WAN environment, the scale of the migration, and the ongoing requirements for life cycle management.

The following sections contain additional information:

- ♦ *Section 3.1, “Providing Rights to the Desktop DNA Template Store,” on page 13*
- ♦ *Section 3.2, “Creating the Personality Migration Personality Store,” on page 14*

## 3.1 Providing Rights to the Desktop DNA Template Store

Desktop DNA templates can be thought of as policies defining the collection of settings and data from legacy workstations. Step-by-step instructions to create a template are provided in *“Using the DNA Template Editor to Create the Template” on page 17*.

You create DNA templates on the staging workstation and then store them in a network location that is accessible to users. You can store the templates on the DNA server or on another NetWare®, Linux, or Windows server.

To provide rights to the template store on a NetWare®, Windows, or Linux server:

- 1 Provide users with appropriate rights to the directory in which you installed Personality Migration (for Windows, by default, `c:\program files\novell\zenworks personality migration`):
  - ♦ For NetWare, provide Read and File Scan rights to users and Write, Read, and File Scan rights to OS and migration administrators.
  - ♦ For Windows, share the `\ddna` directory as DDNA and provide basic Read rights to users and Full Control rights for OS and migration administrators.
  - ♦ For Linux, create a Samba share to `\ddna` and provide Read and Write rights to OS and migration administrators and full control and ownership rights on the file system.

## 3.2 Creating the Personality Migration Personality Store

A typical personality should be approximately 10–15 MB in size (assuming storage of Microsoft® Office settings, templates, and so forth). The size of the personality can grow to exceed 500 MB if user data is consolidated and relocated.

You should monitor the size and content of personalities and adjust templates as required.

Personalities can be stored anywhere, including the user home directory or Novell iFolder®. This guide discusses using a dedicated storage server for personality storage. Future integration solutions will include integration with NetWare and Windows user home directories and also Novell iFolder.

The following sections contain additional information:

- ♦ [Section 3.2.1, “Creating the Personality Store on a NetWare Server,” on page 14](#)
- ♦ [Section 3.2.2, “Creating the Personality Store on a Windows Server,” on page 14](#)
- ♦ [Section 3.2.3, “Creating the Personality Store on a Linux Server,” on page 14](#)

### 3.2.1 Creating the Personality Store on a NetWare Server

- 1 On a NetWare server that users have access rights to, create a `\ddna\data` directory.
- 2 Provide users with Read, File Scan, and Write rights to this directory.

We recommend that you use group membership to control access to this directory.

### 3.2.2 Creating the Personality Store on a Windows Server

- 1 On a Windows server that users have access rights to, create a `c:\program files\novell\zenworks personality migration\data` directory.
- 2 Share the `\data` directory as DDNADATA.
- 3 Provide users with Read and Write permissions to this share.

We recommend that you use group membership to control access to this share.

### 3.2.3 Creating the Personality Store on a Linux Server

- 1 On a Linux server that users have access rights to, create a `\ddna\data` directory.
- 2 Share the `\ddna\data` directory as DDNADATA on Samba.
- 3 Provide users with Read and Write permissions to this share.

We recommend that you use group membership to control access to this share.

# Preparing Workstations for Personality Migration

# 4

The following sections contain information about preparing workstations for personality migration:

- ♦ [Section 4.1, “Personality Migration Management Workstation,” on page 15](#)
- ♦ [Section 4.2, “User Workstations,” on page 15](#)
- ♦ [Section 4.3, “User Login Restriction,” on page 16](#)

## 4.1 Personality Migration Management Workstation

The Novell® ZENworks® Configuration Management Personality Migration management console is a Windows\* workstation typically used by the OS deployment and migration administrators.

In the previous version of ZENworks Personality Migration, in order to create a Personality Migration template that contained the application settings for all of the applications used in your organization, you were required to set up a staging workstation that had each corporate and line-of-business application locally installed. You then used this workstation to create a Desktop DNA template that defined the personality and application settings to be subsequently collected from individual workstations in your organization.

In ZENworks 10 Configuration Management Personality Migration, the Desktop DNA Template Editor is included. This means that you no longer need to set up a workstation that has each corporate and line-of-business application locally installed. You can use the Template Editor to define personality settings for most of the applications used in your environment. For information about installing and using the Template Editor, see [Chapter 2, “Installing ZENworks Personality Migration,” on page 11](#) and [Chapter 5, “Using the DNA Template Editor to Create the Template,” on page 17](#).

## 4.2 User Workstations

To collect and apply workstation personalities using ZENworks Personality Migration, user workstations need to be able to access the ddna share you created in [“Providing Rights to the Desktop DNA Template Store” on page 13](#).

User workstations must also have Microsoft XML parser 3 or later installed. Windows XP Professional workstations and workstations running Microsoft Internet Explorer 6 or later should already have XML parser 3 or later installed. If user workstations do not have XML parser 3 or later installed, you can download it at the [Microsoft Download Center \(http://www.microsoft.com/downloads\)](http://www.microsoft.com/downloads).

You can install the XML parser by creating a ZENworks Configuration Management bundle to install the XML parser system.

## 4.3 User Login Restriction

The user whose workstation is to run `desktopdna.exe` must be logged in as a local workstation administrator whether `desktopdna.exe` is launched from the local machine or from a server location (whether run manually or from a bundle distributed by the ZENworks Adaptive Agent).



# Using the DNA Template Editor to Create the Template

# 5

Each customer can have specific requirements for his or her personality migration. It is outside the scope of this guide to define the various implications and parameters for each migration.

The main factors that drive the complexity and, ultimately, the size and scope of the personality migration, are whether the legacy environment is well managed, whether the customer has an existing standard operating environment, how many laptops and remote users are part of the migration project, and how much data is stored locally on workstations as opposed to network storage.

Desktop DNA templates can be thought of as policies defining the collection of settings and data from the legacy workstation.

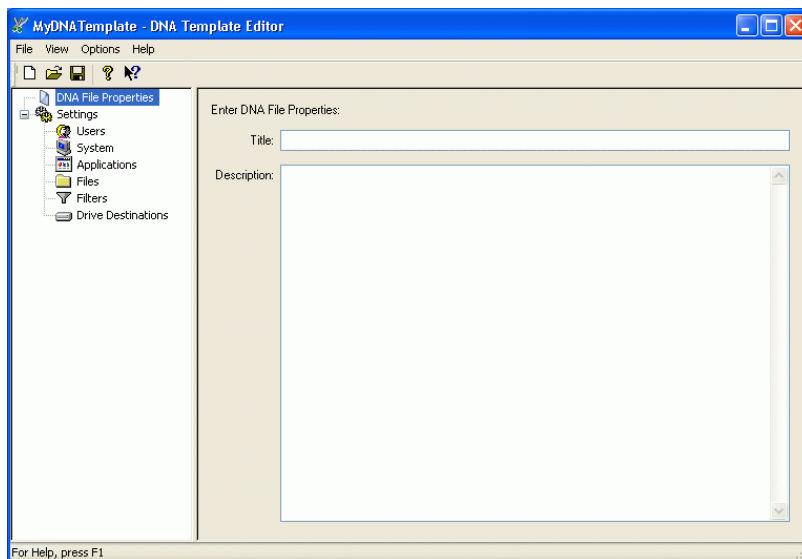
The following sections contain additional information:

- ♦ [Section 5.1, “Creating a DNA Template,” on page 17](#)
- ♦ [Section 5.2, “Configuring the Template,” on page 18](#)
- ♦ [Section 5.3, “Working with Filters,” on page 24](#)
- ♦ [Section 5.4, “Re-enabling the Muscle Migration Function,” on page 28](#)

## 5.1 Creating a DNA Template

To create the Desktop DNA template using the Template Editor:

- 1 Open the DNA Template Editor from the *Start* menu.



- 2 Specify a title and description for your file properties.

You can view the title and description from the Open a DNA File page by right-clicking the DNA file name. They are also visible in the DNA Explorer.

**3** Configure the settings for your template.

**Users:** The Users page lets you add or remove user profiles from your template. Unless you are a system administrator and logged into a system supporting multiple profiles, only the current user's settings are migrated. Current User is designated as the user who is logged into the computer at the time of the migration.

**System:** The System page lets you add settings specific to the operating system.

**Applications:** The Application page lets you select settings specific to the applications and application settings.

**Files:** The Files page lets you specify the files and folders from the source system.

**Filters:** The Filters page lets you create filters to implement a search for files, folders, or drives.

**Drive Destinations:** The Drive Destinations page lets you choose how to redirect drives.

---

**NOTE:** For more information about configuring your template, see [Section 5.2, “Configuring the Template,” on page 18](#), or see the online Help in the DNA Template Editor.

---

**4** To create the Desktop DNA template, click *File > Save*.

**5** Use the default template name, `mydnatemplate.dtf`, or give the template a descriptive name and save the file on the server in the `\ddna\cd\templates` directory that you created in [Section 3.1, “Providing Rights to the Desktop DNA Template Store,” on page 13](#).

**6** Click *Save*.

For the purposes of this guide, after you save the template, you are ready to create the Configuration Management Directive bundles to collect and apply the personality information. See [“Creating the Bundle to Collect the Personality” on page 31](#) and [“Creating the Application Object to Apply the Personality” on page 35](#) for more information.

**7** Click *File > Exit*.

## 5.2 Configuring the Template

When you create a template, you select settings for users, the system, applications, files, filters, and drive destinations.

The following sections provide additional information:

- ♦ [Section 5.2.1, “Configuring Users Settings,” on page 18](#)
- ♦ [Section 5.2.2, “Configuring System Settings,” on page 20](#)
- ♦ [Section 5.2.3, “Configuring Applications Settings,” on page 21](#)
- ♦ [Section 5.2.4, “Configuring Files Settings,” on page 22](#)
- ♦ [Section 5.2.5, “Adding Drive Destinations,” on page 23](#)

### 5.2.1 Configuring Users Settings

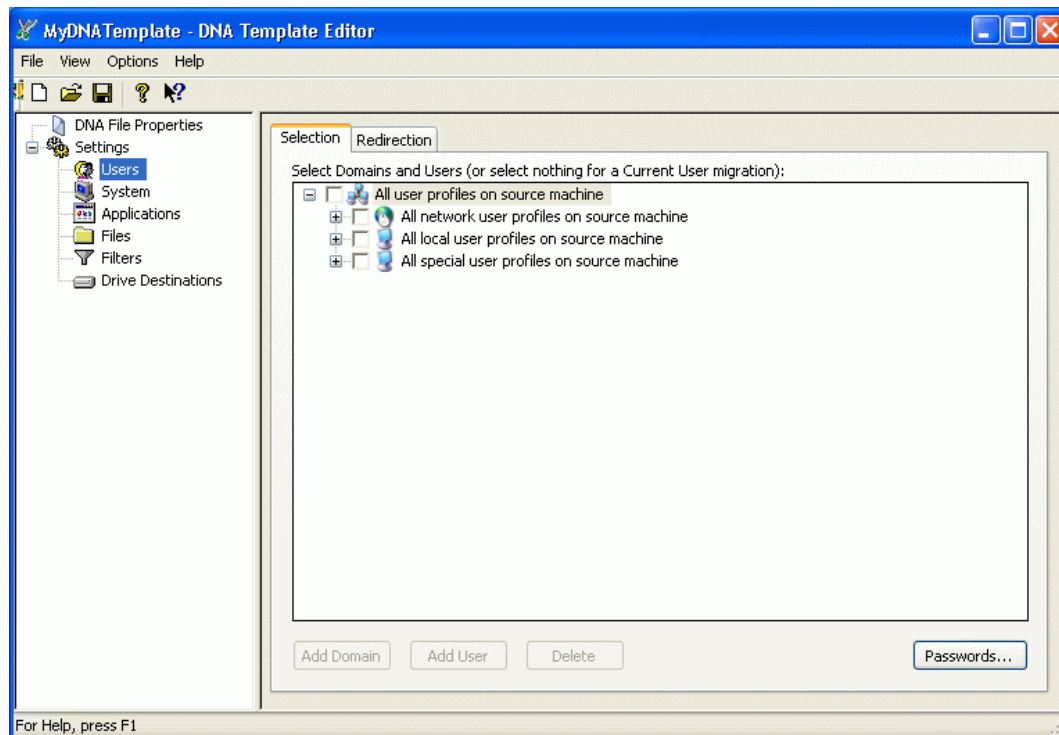
To configure the *Users* settings for the template if you want to migrate more than the current user:

---

**NOTE:** You must have full administrator privileges to migrate multiple users in Windows NT or Windows 2000.

---

- 1 Open the DNA Template Editor from the *Start* menu.
- 2 Click *Users* in the left pane of the Template Editor window.



- 3 Select the domains and users for migration.

**Network Users:** The network user branch displays users belonging to NT Domains or to Active Directory\*. If both types of directory systems are implemented, they are both displayed. When you expand an NT Domain branch, only users display under the Domain name. If you expand an Active Directory branch, Active Directory containers display along with the users beneath the containers. If you migrate User Profiles associated with domain accounts (or Active Directory accounts), you must ensure that the user logged in at the time of the migration has administrative rights locally and is a member of the Domain Admin group. Having a user with these permissions logged in during migration allows the creation of accounts on the domain if you are changing domain membership.

**Local Users:** The local users branch lets you add local user profiles. If you migrate user profiles associated with local accounts, you must ensure that the user logged in at the time of migration has administrative rights locally. Having a user with these permissions logged in during migration allows the creation of accounts on the local system. Additionally, you can specify how passwords are created for new accounts by clicking the *Passwords* button.

**Special Users:** The special users branch lets you add special local user profiles and is included for selecting the administrator or default user on Windows NT\* or Windows 2000 systems. The default user profile settings can be migrated so that all subsequent users logging in to a Windows NT or Windows 2000 system get specified default or applications settings.

- 4 To assign a password, click *Passwords*.

**4a** Select one of the following:

- ♦ *Use no passwords*
- ♦ *Use a common password*
- ♦ *Use randomly generated passwords*

**4b** Click *Specify* to enter a password or options for the randomly generated password, then click *OK*.

Select *Users must change password at next logon* to prompt users for a password.

**5** To redirect users, select the users you want to migrate by clicking the check box to the left of the username.

**6** Click the *Redirection* tab.

**7** Double-click the destination column of the domain or Active Directory container branch.

**8** Specify the new domain or Active Directory container name.

All users under the specific user branch are relocated to the new domain name or Active Directory container on the destination unless the user is specifically redirected to a different domain or Active Directory container.

**9** To redirect all users in a specific domain or Active Directory container, double-click the users' destination column.

You can specify a different domain or Active Directory container and a new username. The format should be *NT Domain name or Active Directory container name\User Name*.

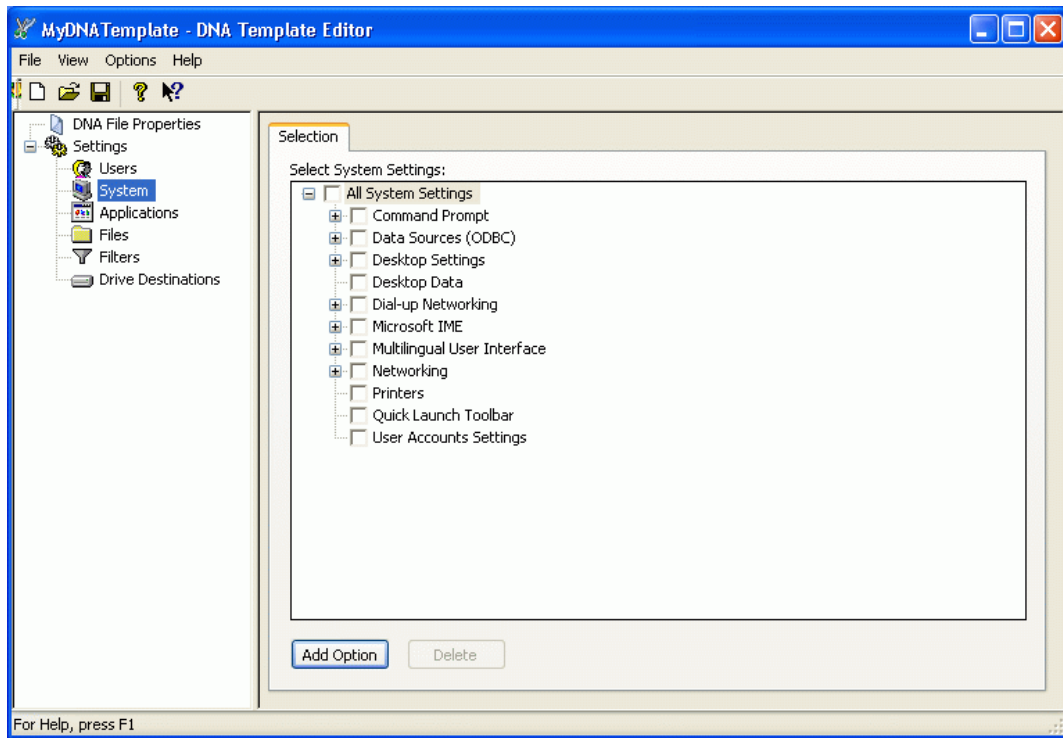
Users identified for the destination cannot be mixed wildcards, but must use the \* wildcard to replace an entire string

## 5.2.2 Configuring System Settings

To configure System settings:

**1** Open the DNA Template Editor from the *Start* menu.

- 2 Click *System* in the left pane of the Template Editor window.



- 3 Select the system settings.
- 4 To add a setting group, click *Add Option* and type the name of the option group.
- 5 To add a setting, expand the list to show all the system settings in a category, click *Add Option*, and type the name of the setting.

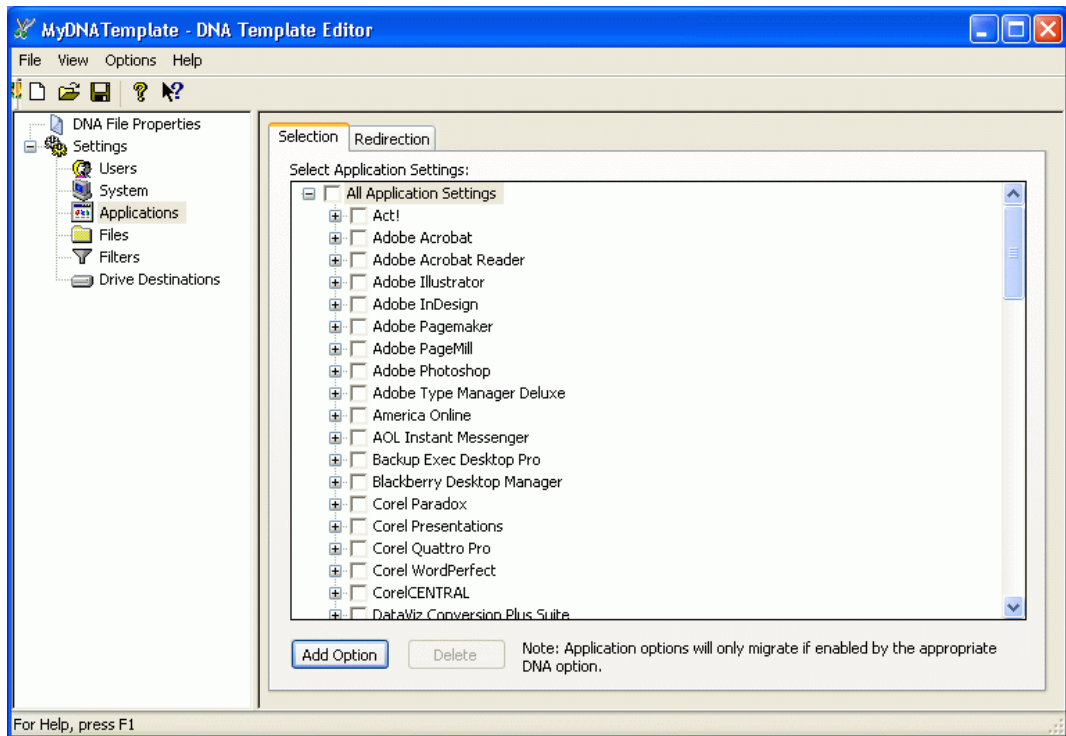
Unless you are certain you want to migrate everything in a category, be sure to expand the list to display all the items and subcategories.

### 5.2.3 Configuring Applications Settings

To configure Applications settings:

- 1 Open the DNA Template Editor from the *Start* menu.

- 2 Click *Applications* in the left pane of the Template Editor window.



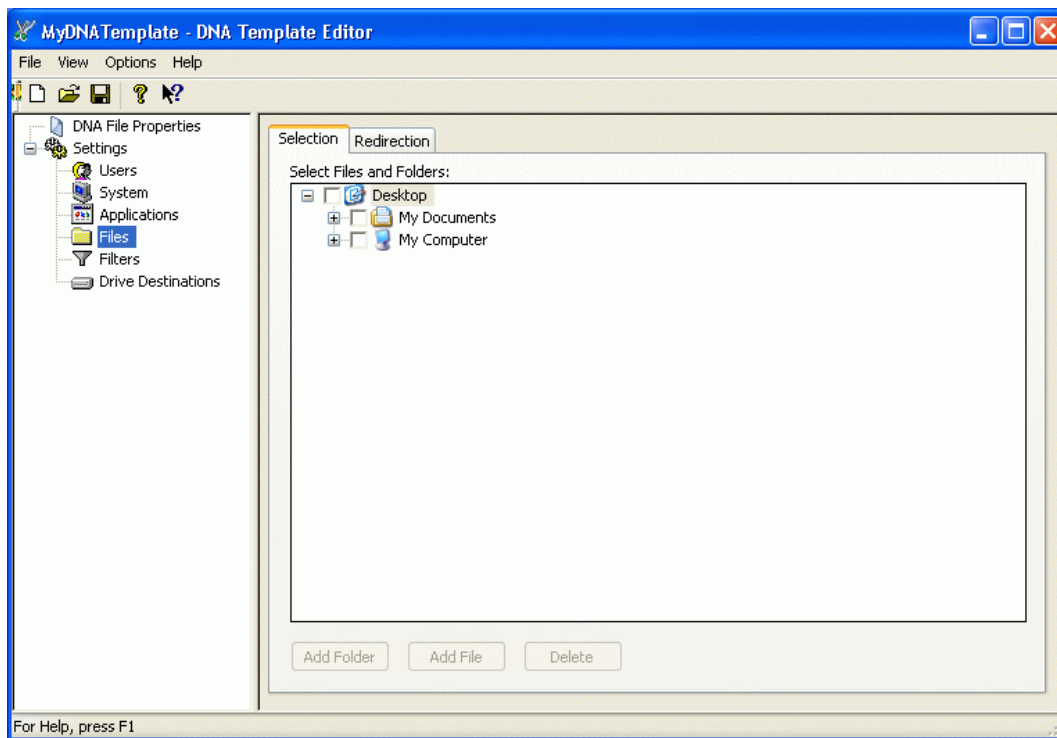
- 3 Select the applications.
- 4 To add an application, click *Add Option* and type the name of the option group.
- 5 To add a setting, expand the list to show all the application settings in a category, click *Add Option*, and type the name of the setting.
- 6 To redirect an application:
  - 6a Select the application.
  - 6b Click the *Redirection* tab.
  - 6c Double-click the *Destination* column.
  - 6d Enter the path where you want to redirect the application or click *Browse* to locate the path.
  - 6e Click *OK*.
  - 6f Repeat steps 6a–6e for each additional application.

## 5.2.4 Configuring Files Settings

To configure the Files settings:

- 1 Open the DNA Template Editor from the *Start* menu.

- 2 Click *Files* in the left pane of the Template Editor window.



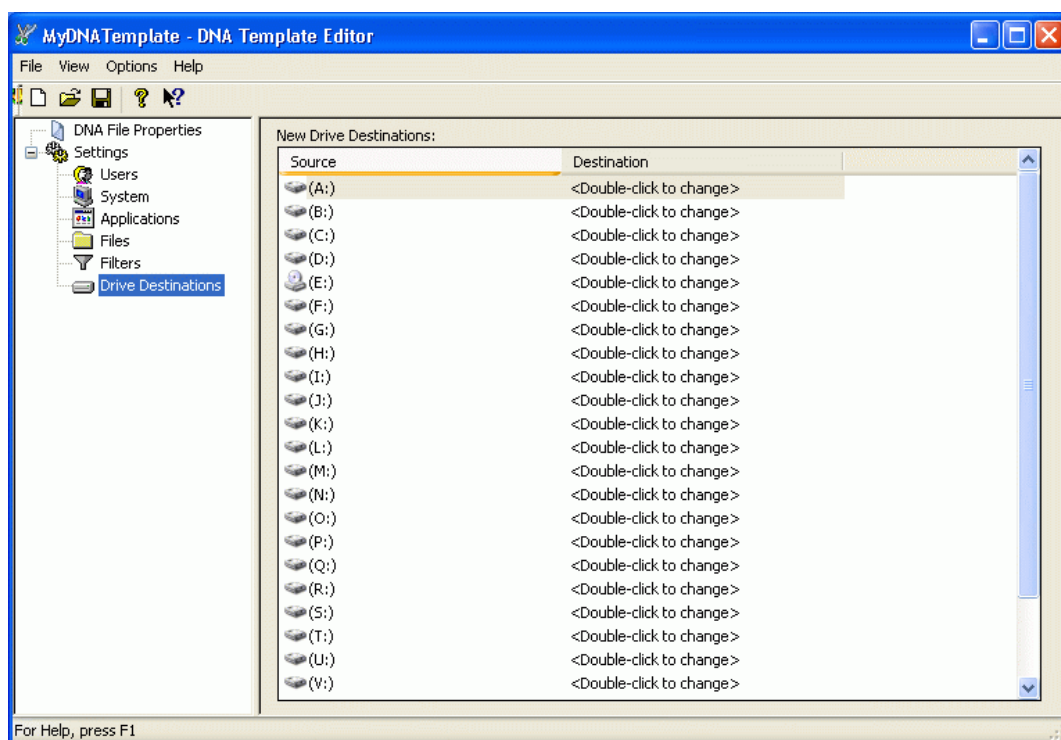
- 3 Select the files and folders.
- 4 To add a folder, click *Add Folder* and enter a name for the new folder.
- 5 To add a file, click *Add File* and enter a name for the new file.
- 6 To redirect a file or folder:
  - 6a Select that file or folder
  - 6b Click the *Redirection* tab.
  - 6c Double-click the *Destination* column.
  - 6d Enter the path where you want to redirect the file or folder or click *Browse* to locate the path.
  - 6e Click *OK*.
  - 6f Repeat steps 6a–6e for each additional file or folder.

## 5.2.5 Adding Drive Destinations

To add drive destinations:

- 1 Open the DNA Template Editor from the *Start* menu.

- 2 Click *Drive Destinations* in the left pane of the Template Editor window.



- 3 Double-click the *Destination* column.
- 4 Select the drive letter from the drop-down menu.

---

**NOTE:** Files on the source system that are stored in folders recognized by the Windows Registry are automatically migrated to the equivalent folder on the destination system. If you want to migrate them elsewhere, add file and folder destinations in the Files category.

---

## 5.3 Working with Filters

A filter lets you identify file extensions that you want to include in a migration. However, you might want to include those files only if they are stored in a specific folder or if they were created after a certain date. Suppose you want to include some files with a certain extension, but not if they are in a specific directory. Or what if you want to include all the files in a certain folder, but exclude others if they are in a subfolder? ZENworks Personality Migration includes advanced filtering that allows you to identify file extensions and folders that you want to include or exclude in a migration. The *Filters* dialog box lets you create and test an advanced filter to make sure you can find the files and folders you are looking for before you save the filter settings.

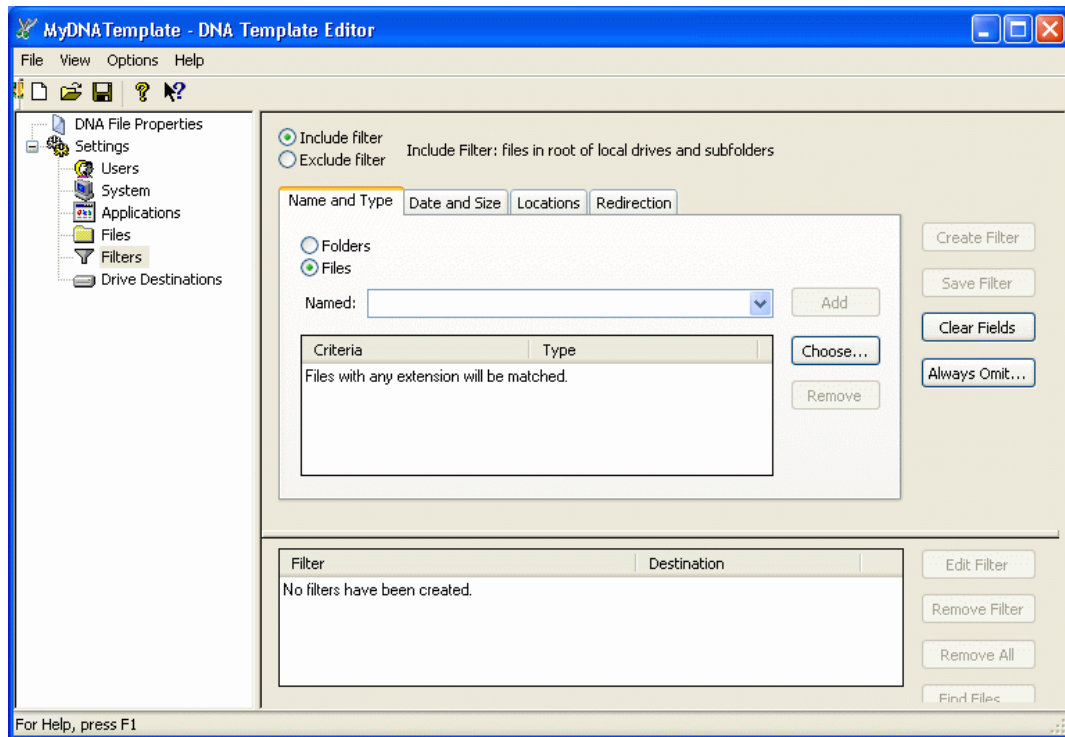
ZENworks Personality Migration allows you to create the following types of filters:

- ♦ *Include* filters specify the files and folders to migrate.
- ♦ *Exclude* filters specify files and folders you do not want to migrate.
- ♦ *Omit* filters specify folders that you do not want to include. Files in these folders and the folders themselves are not included in the search. The omit filter criteria is specific to a filter.
- ♦ *Always Omit* filters lets you identify folders that you never want to include.



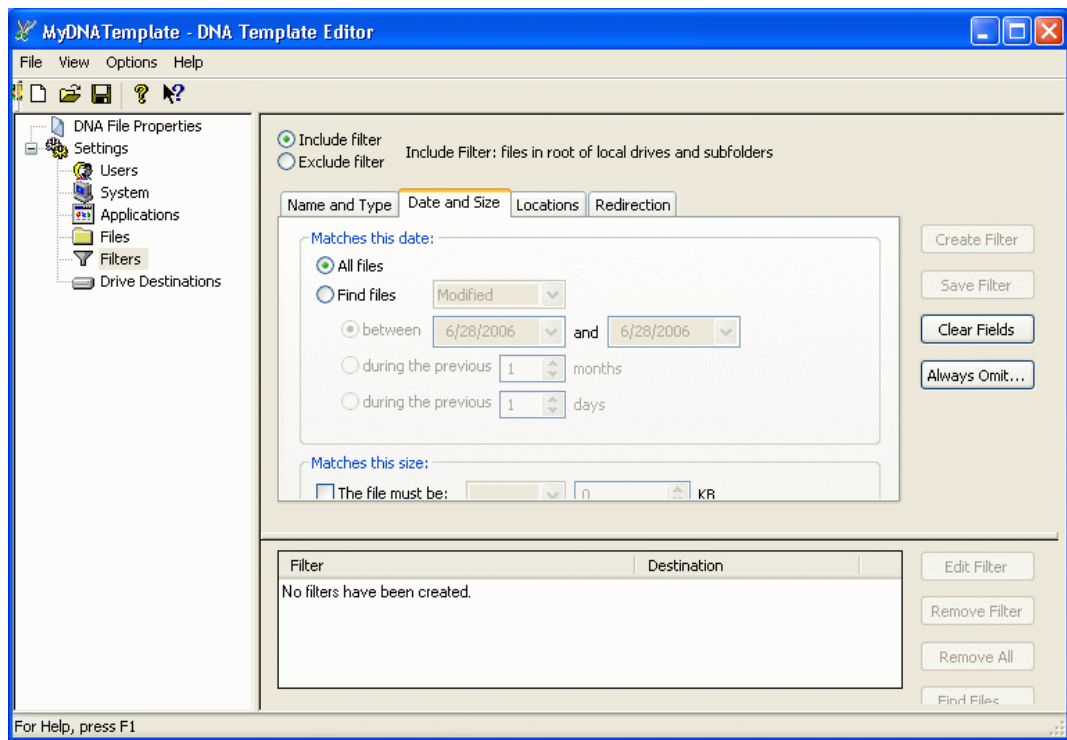
To create a filter:

- 1 Open the DNA Template Editor from the *Start* menu.
- 2 Click *Filters* in the left pane of the Template Editor window.



- 3 Click *Include filter* or *Exclude filter* depending on the type of filter you want to create.
- 4 Click *Folders* or *Files* depending on which one the filter applies to.
- 5 Click *Named* to display a list of file extensions, or select one from the drop-down list.  
Only files and folders added to the list by clicking *Add* appear in the drop-down list.
- 6 Click *Choose* to display a list of file extensions, or type the extension in the *Named* field.
- 7 Click *Add* to put the extension in the *Criteria* list.  
If you add an extension to the *Criteria* list and you later want to remove it, select the extension and click *Remove*.

8 Click the *Date and Size* tab.

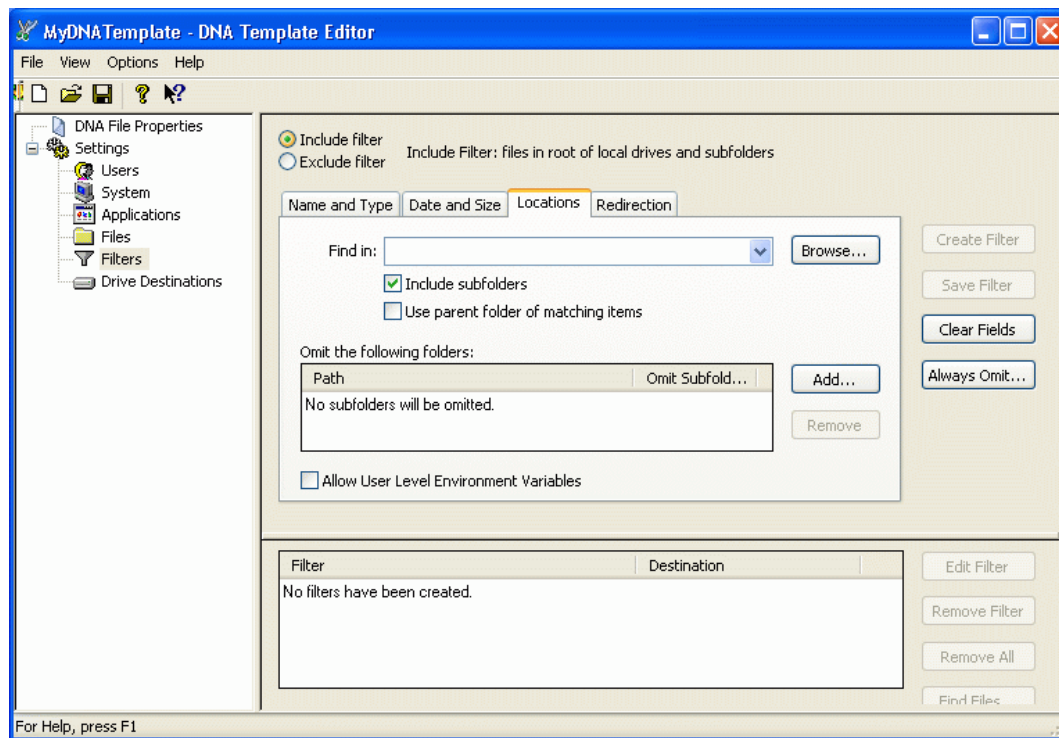


9 Fill in the fields:

**Matches this date:** Select whether you want to search for all files or find those created between specified dates.

**Matches this size:** Select whether you want to filter by file size.

- 10 Click the *Locations* tab.



- 11 Specify the name of the drive or folder to search in the *Find in* field, or browse to select a drive or folder to search.

Only drives and folders that you have added to the list by clicking *Add* appear when you click the drop-down list. You can also click *Browse* to specify a drive or folder.

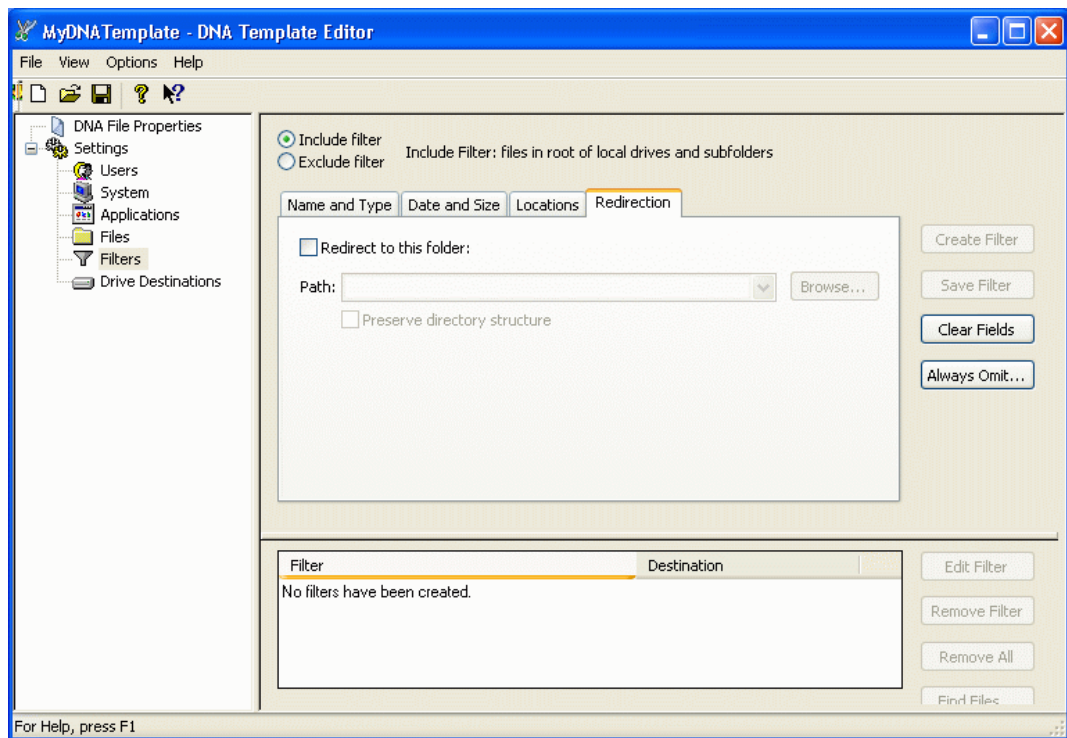
- 12 Click *Include* subfolders to include the subfolders of the selected folder.

- 13 Click *Use parent folder of matching items* if you want to migrate the entire contents of the folder where the file matching the filter criteria is located.

You cannot redirect filters where you have selected *Use parent folder of matching items*. You can redirect other filters. If you want to redirect the files and folders captured by a filter where you have selected *Use parent folder of matching items*, you need to redirect the folders individually by expanding the file and folder tree.

- 14 Select whether you want to omit specific folders from individual filter processing or from all filter processing for a migration.

- 15 Click the *Redirection* tab.



- 16 To use redirection, click *Redirect to this folder* and type a path, or use the *Browse* button to select a path.

- 17 Click *Create Filter*.

The filter name appears in the pane at the bottom of the screen.

---

**NOTE:** Once a filter has been created, you can test it by clicking on the filter name in the pane at the bottom of the screen and clicking *Find Files*.

---

To edit filters:

- 1 Click the filter name in the pane at the bottom of the screen.
- 2 Click *Edit Filter*.
- 3 Make the desired changes.
- 4 Click *Save Filter*.

## 5.4 Re-enabling the Muscle Migration Function

Muscle Migration, the Desktop DNA Personality Migration function that lets you migrate applications that do not have scripts available, is disabled by default in ZENworks Personality Migration.

---

**NOTE:** Re-enabling the Muscle function in Personality Migration affects only the Personality Migration interface and does not re-enable Muscle Migration in the template.

---

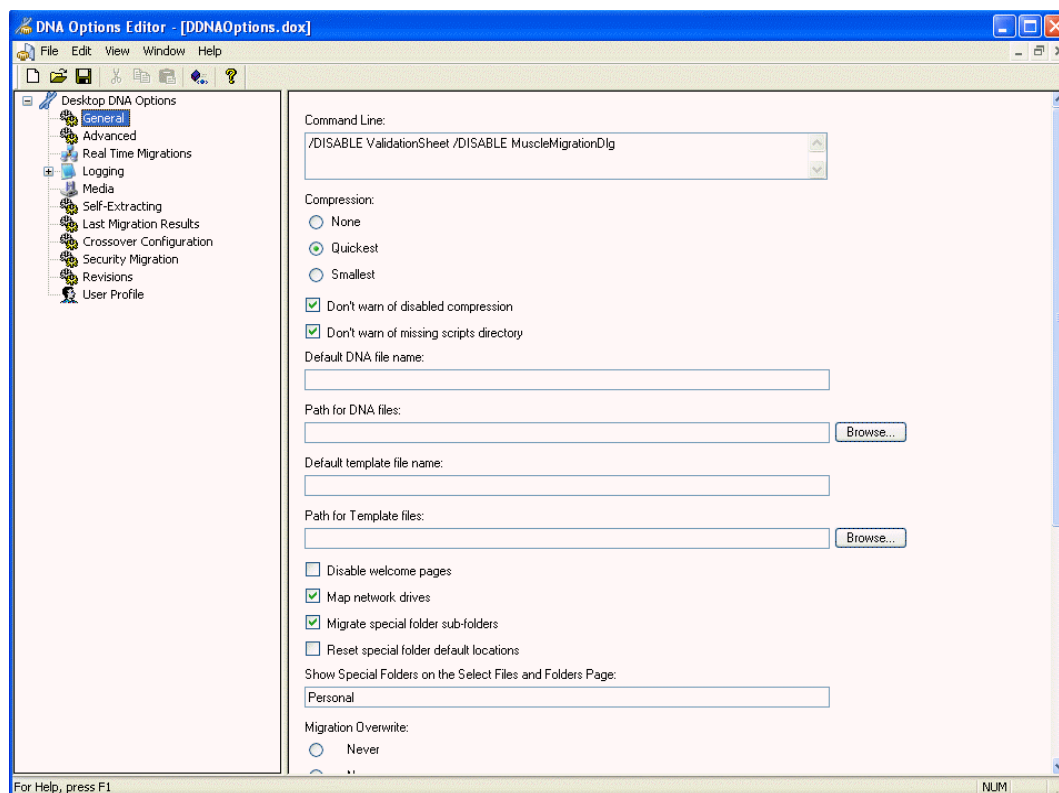
To re-enable the Muscle Migration using the DNA Options Editor:

- 1 Click *Start > Programs > Novell ZENworks Personality Migration > Migration Toolkit > DNA Options Editor*.
- 2 Navigate to `c:\program files\novell\zenworks personality migration` and open the `DDNAOptions.dox` file, then click *General* in the left pane of the Options Editor window.

---

**NOTE:** The settings file that you need to edit to re-enable the Muscle Migration function is created after you run and exit Personality Migration for the first time.

---



- 3 Delete the following from the *Command Line* window:  
`/DISABLE MuscleMigrationDlg`
- 4 From the *File* menu, click *Save*, then click *Exit*.

To re-enable Muscle Migration manually:

- 1 Navigate to the directory where Personality Migration is installed by default: `c:\program files\novell\zenworks\personality migration`.
- 2 In the installation directory, locate the `ddnaoptions.dox` file.

---

**NOTE:** The settings file that you need to edit to re-enable the Muscle Migration function is created after you run and exit Personality Migration for the first time.

---

- 3 Right-click the file, select *Open With*, then select *Notepad* (or any other text editor).

- 4** In the Command Line option section (the first section) of the file, select /Disable MuscleMigrationDLG, then delete this selection.  
Make sure that you do not delete any tags (for example, </Value>) surrounding this text.
- 5** In the text editor, click *File > Save* to save the modified `ddnaoptions.dox` file in its installed location.

# Creating the Bundle to Collect the Personality

# 6

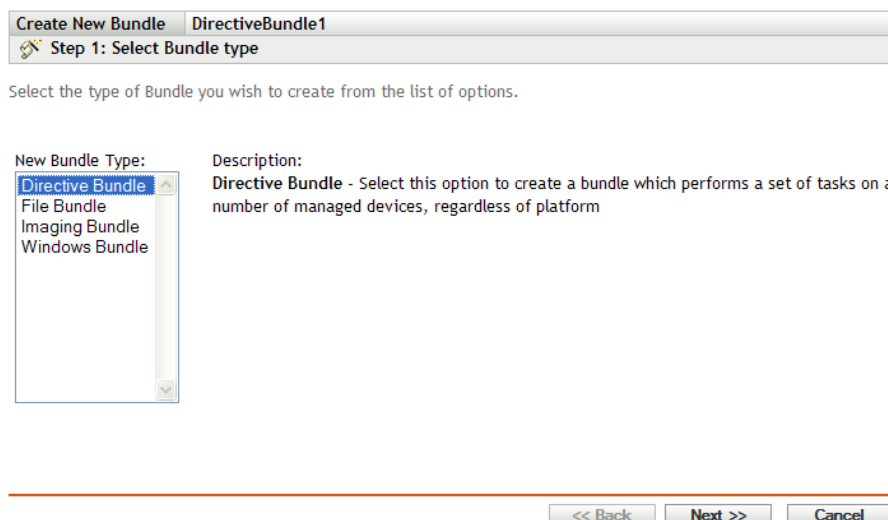
The Directive Bundle you create in the following steps collects the DNA personality from assigned workstations and stores the DNA personality files on the network. You can use the DNA personality files to restore users' personality settings after upgrading to a new OS or replacing hardware, or you can store the DNA personality files in a network location as part of your disaster-recovery process.

A Directive bundle lets you perform one or more actions on one or more devices, regardless of platform. For example, you can use a Directive bundle to edit a Windows INI file or text file. You can run a script, start or stop a service, delete a file, and more. In addition, the bundle can include multiple actions to perform.

In this procedure, you will use a Directive bundle to launch a Windows executable file to collect the personality migration from assigned workstations.

To create a Directive bundle to collect workstation personality:

- 1 In ZENworks Control Center, click the *Bundles* tab.
- 2 In the *Bundle* list, click *New*, then click *Bundle* to display the Select Bundle Type page.



- 3 Select *Directive Bundle*, click *Next* to display the Define Details page, then fill in the fields.
  - Bundle Name:** Provide a name for the bundle. For this example, type `CollectDNA`.
  - Folder:** Type the name or browse to and select the ZENworks Control Center folder where you want the bundle to reside. The default is `/bundles`, but you can create additional folders to organize your bundles.
  - Icon:** Select the icon you want ZENworks Adaptive Agent to display to represent the bundle. If you do not specify an icon, a default icon is used.

This applies only to the icon displayed by ZENworks Adaptive Agent on the managed device. ZENworks Control Center uses default icons to represent the different bundles (Directive, File, Imaging, and Windows).

**Description:** Provide a short description of the bundle's contents. This description displays in ZENworks Control Center and in the ZENworks Adaptive Agent.

- 4 Click *Next* to display the Add Actions page, click *Add*, then select *Run Script*.
- 5 From the *Script to run* list, select *Define your own script*.
- 6 Click *Edit* next to *Script content* to display the Edit - Script Content dialog box.
- 7 Type the following script:

```
{DDNA_SOURCE}\DesktopDNA.exe {DDNA_ACTION}
{DDNA_DATA}\{DDNA_USER}\{DDNA_WS}.dna /T
{DDNA_SOURCE}\Templates\{DDNA_TEMPLATE} /X {DDNA_SILENT}

IF ERRORLEVEL==1 SET ERRORLEVEL=0
IF ERRORLEVEL==2 SET ERRORLEVEL=0
```
- 8 Click *OK*.
- 9 Type `.bat` in the *Save file with extension field*.
- 10 Type `cmd.exe` in the *Path to script engine field*.
- 11 Type `/c` in the *Script engine parameters field*.
- 12 From the *Run as* list, select *User*.  
Click *More Options* to display the *Run as* list.

---

**IMPORTANT:** If the user is not a member of the Administrators group, only his or her Personality settings are migrated.

---

- 13 Click *OK*.
- 14 Click *Action Set Options*, click *Run once*, click the desired option, then click *OK*.
- 15 (Conditional) Select the *Continue on Failure* check box next to the action (or actions) you want to bypass on failure.  
If one of the actions in the action set fails, the remaining actions in the set are performed.
- 16 Click *Next* to display the Summary page, then review the information on the Summary page, making any changes to the bundle settings by using the *Back* button as necessary.
- 17 Select the *Define Additional Properties* check box to display the bundle's Summary page after the wizard completes. You can use the various tabs to edit the bundle's assignments, requirements, actions, settings, and content replication settings. In **Step 20**, you set some variables to help automate the Run Script action.
- 18 Click *Finish* to create the bundle as configured per settings on the Summary page.
- 19 Click the *Settings* tab.
- 20 Under *System Variables*, click *Add* to display the Add Variable dialog box, fill in the fields, then click *OK*.  
Repeat this step to create the following variables:



Macro	Value	Description
DDNA_ACTION	/D	Dumps or takes the personality of the workstation. Make sure that this value immediately precedes the argument defining the DNA file you want to create of the source system.
DDNA_DATA	UNC path to <code>ddnadata</code> share or directory	Specifies the directory where the personality file will be copied to or retrieved from.
DDNA_SILENT	/M	Starts the migration in user interface mode.
DDNA_SOURCE	UNC path to <code>ddnarun</code> share or directory	Directory where the Desktop DNA executable is located where you installed ZENworks Personality Migration.
DDNA_TEMPLATE	Template file	Filename of the template file to use
DDNA_USER	\${USERNAME}	Username of the current user
DDNA_WS	\${COMPUTERNAME}	Workstation machine name

**21** Click *Apply*.

**22** When you clicked *Finish* in **Step 18**, the bundle was created but it does not have users or devices assigned, schedules, and group membership. Before the Run Script and Reboot/Shutdown actions contained in the Directive bundle run, configure additional options for the bundle by continuing with “**Assigning Existing Bundles to Devices**” or “**Assigning Existing Bundles to Users**” in the *ZENworks 10 Configuration Management Software Distribution Reference*.



# Creating the Application Object to Apply the Personality

# 7

To create a Directive Bundle to apply the personality to users' workstations, you copy the information from an existing bundle.

- 1 In ZENworks Control Center, click the *Bundles* tab.
- 2 In the *Bundle* list, select the check box in front of the *CollectDNA* bundle you created in [Chapter 6, "Creating the Bundle to Collect the Personality," on page 31](#), click *Edit*, then click *Copy* to display the Copy Directive Bundle dialog box.
- 3 Name the new bundle *ApplyDNA*, then click *OK*.
- 4 In the *Bundles* list, click underlined link for the *ApplyDNA* bundle to display its Summary page.
- 5 Click the *Settings* tab.
- 6 Under *System Variables*, click *Add* to display the Add Variable dialog box, fill in the fields, then click *OK*.

Repeat this step to create the following variables:

Macro	Value	Description
DDNA_ACTION	/A	Dumps or takes the personality of the workstation. Make sure that this value immediately precedes the argument defining the DNA file you want to create of the source system.
DDNA_DATA	UNC path to <code>ddnadata</code> share or directory	Specifies the directory where the personality file will be copied to or retrieved from.
DDNA_SILENT	/M	Starts the migration in user interface mode.
DDNA_SOURCE	UNC path to <code>ddnarun</code> share or directory	Directory where the Desktop DNA executable is located where you installed ZENworks Personality Migration.
DDNA_TEMPLATE	Template file	Filename of the template file to use
DDNA_USER	\${USERNAME}	Username of the current user
DDNA_WS	\${COMPUTERNAME}	Workstation machine name

- 7 Click *Apply*.
- 8 Click the *Actions* tab, click *Add*, then select *Reboot/Shutdown*.
- 9 Configure the Reboot/Shutdown action so that the device reboots after the personality is applied, click *OK*, then click *Apply*.
- 10 Before the Run Script and Reboot/Shutdown actions contained in the Directive bundle run, configure additional options for the bundle by continuing with ["Assigning Existing Bundles to"](#)

Devices” or “Assigning Existing Bundles to Users” in the *ZENworks 10 Configuration Management Software Distribution Reference*.

# Upgrading Personality Migration

# 8

Novell® ZENworks® Personality Migration is powered by Unicenter Desktop DNA from Computer Associates. Desktop DNA now includes the Template Editor, which eases the process of creating desktop templates used for migrations. For a more detailed list of enhancements, see the Release Impact Guide ([http://www.novell.com/documentation/zcm10/pdfdoc/zcm10\\_personality\\_migration/J020751E.pdf](http://www.novell.com/documentation/zcm10/pdfdoc/zcm10_personality_migration/J020751E.pdf)).

If you are upgrading Personality Migration, follow the installation instructions in “**Installing ZENworks Personality Migration**” on page 11. A prompt will notify you that the previous version will be uninstalled before proceeding with the new installation.