

Enterprise Edition Getting Started Guide

Novell® ZENworks® 10 Configuration Management SP2

10.2

February 01, 2010

www.novell.com



Legal Notices

Novell, Inc., makes no representations or warranties with respect to the contents or use of this documentation, and specifically disclaims any express or implied warranties of merchantability or fitness for any particular purpose. Further, Novell, Inc., reserves the right to revise this publication and to make changes to its content, at any time, without obligation to notify any person or entity of such revisions or changes.

Further, Novell, Inc., makes no representations or warranties with respect to any software, and specifically disclaims any express or implied warranties of merchantability or fitness for any particular purpose. Further, Novell, Inc., reserves the right to make changes to any and all parts of Novell software, at any time, without any obligation to notify any person or entity of such changes.

Any products or technical information provided under this Agreement may be subject to U.S. export controls and the trade laws of other countries. You agree to comply with all export control regulations and to obtain any required licenses or classification to export, re-export or import deliverables. You agree not to export or re-export to entities on the current U.S. export exclusion lists or to any embargoed or terrorist countries as specified in the U.S. export laws. You agree to not use deliverables for prohibited nuclear, missile, or chemical biological weaponry end uses. See the [Novell International Trade Services Web page \(http://www.novell.com/info/exports/\)](http://www.novell.com/info/exports/) for more information on exporting Novell software. Novell assumes no responsibility for your failure to obtain any necessary export approvals.

Copyright © 2007 - 2010 Novell, Inc. All rights reserved. No part of this publication may be reproduced, photocopied, stored on a retrieval system, or transmitted without the express written consent of the publisher.

Novell, Inc., has intellectual property rights relating to technology embodied in the product that is described in this document. In particular, and without limitation, these intellectual property rights may include one or more of the U.S. patents listed on the [Novell Legal Patents Web page \(http://www.novell.com/company/legal/patents/\)](http://www.novell.com/company/legal/patents/) and one or more additional patents or pending patent applications in the U.S. and in other countries.

Novell, Inc.
404 Wyman Street, Suite 500
Waltham, MA 02451
U.S.A.
www.novell.com

Online Documentation: To access the latest online documentation for this and other Novell products, see the [Novell Documentation Web page \(http://www.novell.com/documentation\)](http://www.novell.com/documentation).

Novell Trademarks

For Novell trademarks, see [the Novell Trademark and Service Mark list \(http://www.novell.com/company/legal/trademarks/tmlist.html\)](http://www.novell.com/company/legal/trademarks/tmlist.html).

Third-Party Materials

All third-party trademarks are the property of their respective owners.

Contents

About This Guide	7
1 Product Overview	9
1.1 Management Capabilities	9
1.1.1 Discovery and Deployment	10
1.1.2 Software Management	10
1.1.3 Policy-Based Device Management	10
1.1.4 Imaging	11
1.1.5 Remote Management	11
1.1.6 ZENworks Reporting	11
1.1.7 Inventory Collection	12
1.1.8 System Updates	12
1.1.9 Asset Management	12
1.1.10 Patch Management	12
1.1.11 Personality Migration	13
1.1.12 Linux Management	13
1.1.13 Handheld Management	13
1.1.14 Endpoint Security Management	13
1.2 System Architecture	14
1.2.1 Primary Server	14
1.2.2 Satellite	15
1.2.3 Managed Device	16
1.2.4 Inventoried-Only Device	16
1.2.5 Management Zone	16
1.3 System Administration	16
1.4 ZENworks Terminology	18
2 Installation and Setup Documentation	21
3 Administration Documentation	23
A Documentation Updates	25
A.1 February 01, 2010	25
A.2 May 27, 2009: SP2 (10.2)	25

About This Guide

This *Novell ZENworks Configuration Management Enterprise Edition Getting Started Guide* includes information to help you successfully install, set up, and use a Novell® ZENworks® 10 Configuration Management SP2 system. The information in this guide is organized as follows:

- ♦ Chapter 1, “Product Overview,” on page 9
- ♦ Chapter 2, “Installation and Setup Documentation,” on page 21
- ♦ Chapter 3, “Administration Documentation,” on page 23
- ♦ Appendix A, “Documentation Updates,” on page 25

Audience

This guide is intended for ZENworks Configuration Management administrators.

Feedback

We want to hear your comments and suggestions about this manual and the other documentation included with this product. Please use the User Comments feature at the bottom of each page of the online documentation, or go to the [Novell Documentation Feedback site \(http://www.novell.com/documentation/feedback.html\)](http://www.novell.com/documentation/feedback.html) and enter your comments there.

Additional Documentation

ZENworks 10 Configuration Management is supported by other documentation (in both PDF and HTML formats) that you can use to learn about and implement the product. For additional documentation, see the [ZENworks 10 Configuration Management SP2 documentation \(http://www.novell.com/documentation/zcm10/\)](http://www.novell.com/documentation/zcm10/).

Documentation Conventions

In Novell documentation, a greater-than symbol (>) is used to separate actions within a step and items in a cross-reference path.

A trademark symbol (®, ™, etc.) denotes a Novell trademark. An asterisk (*) denotes a third-party trademark.

When a single pathname can be written with a backslash for some platforms or a forward slash for other platforms, the pathname is presented with a backslash. Users of platforms that require a forward slash, such as Linux*, should use forward slashes as required by your software.

Product Overview

1

Novell® ZENworks® 10 Configuration Management SP2 Enterprise Edition provides comprehensive management of Windows* servers and workstations, collectively referred to as devices. Both Windows and Linux* devices can act as servers in Configuration Management.

Using the [ZENworks Control Center](#) management console, you can:

- ♦ Discover deployable devices in your network and create deployment tasks to deploy ZENworks software to them
- ♦ Manage and deploy software on your devices
- ♦ Manage your device configuration and application settings through the use of policies
- ♦ Automate the application of images and scripts
- ♦ Remotely manage devices by using a secure and fast interface
- ♦ Collect hardware and software inventory
- ♦ Generate reports for policies, inventory, bundles, and messages
- ♦ Convert and customize legacy software installations to industry standard MSIs for easy deployment
- ♦ Manage delivery of software patches automatically and consistently to minimize vulnerabilities and issues
- ♦ Manage your software assets
- ♦ Using Linux Management, provide full life cycle management for Linux devices
- ♦ Inventory and manage handheld devices
- ♦ Implement endpoint security by combining security policy enforcement for data, devices, and connectivity under a single management console

The following sections further introduce you to the capabilities of ZENworks Configuration Management and provide a high-level overview of the ZENworks system architecture and administration.

- ♦ [Section 1.1, “Management Capabilities,” on page 9](#)
- ♦ [Section 1.2, “System Architecture,” on page 14](#)
- ♦ [Section 1.3, “System Administration,” on page 16](#)
- ♦ [Section 1.4, “ZENworks Terminology,” on page 18](#)

1.1 Management Capabilities

The ZENworks Configuration Management capabilities are as follows:

- ♦ [Section 1.1.1, “Discovery and Deployment,” on page 10](#)
- ♦ [Section 1.1.2, “Software Management,” on page 10](#)
- ♦ [Section 1.1.3, “Policy-Based Device Management,” on page 10](#)
- ♦ [Section 1.1.4, “Imaging,” on page 11](#)

- ♦ [Section 1.1.5, “Remote Management,” on page 11](#)
- ♦ [Section 1.1.6, “ZENworks Reporting,” on page 11](#)
- ♦ [Section 1.1.7, “Inventory Collection,” on page 12](#)
- ♦ [Section 1.1.8, “System Updates,” on page 12](#)
- ♦ [Section 1.1.9, “Asset Management,” on page 12](#)
- ♦ [Section 1.1.10, “Patch Management,” on page 12](#)
- ♦ [Section 1.1.11, “Personality Migration,” on page 13](#)
- ♦ [Section 1.1.12, “Linux Management,” on page 13](#)
- ♦ [Section 1.1.13, “Handheld Management,” on page 13](#)
- ♦ [Section 1.1.14, “Endpoint Security Management,” on page 13](#)

1.1.1 Discovery and Deployment

The Discovery process is used to find devices in the network through querying a set of provided IP addresses and to collect inventory information by using technologies like SNMP, WMI, and SSH. Discovery process can also find devices from Novell eDirectory™ or Active Directory*, and migrate your traditional ZENworks devices from Novell eDirectory.

The Deployment process is used to distribute and install ZENworks Adaptive Agent to a collection of devices that are identified by the discovery process or by providing a list of devices explicitly. These devices then become managed devices.

For more information, see the [ZENworks 10 Configuration Management Discovery, Deployment, and Retirement Reference](#).

1.1.2 Software Management

ZENworks Configuration Management lets you configure, distribute, install, remove, and roll back applications on your devices. This is done through the use of software bundles.

When you assign a bundle to a device, you can install and launch it on the device according to the schedules (distribution, launch, and availability) that you define.

For more information, see the [ZENworks 10 Configuration Management Software Distribution Reference](#).

1.1.3 Policy-Based Device Management

ZENworks Configuration Management lets you use policies to create a set of configurations that can be assigned to any number of managed devices. It helps you to provide the devices with a uniform configuration, and it eliminates the need to configure each device separately.

ZENworks Configuration Management policies help you manage the Internet Explorer favorites, Windows Group policies, local file rights, printers, SNMP service settings, roaming profiles, and configure dynamic local user accounts and manage them on the managed devices. You can also configure the behavior or execution of a Remote Management session on the managed device, and administer as well as centrally manage the behavior and features of ZENworks Explorer.

For more information, see the [ZENworks 10 Configuration Management Policy Management Reference](#).

1.1.4 Imaging

ZENworks Configuration Management includes a preboot service that enables you to perform tasks on devices before their operating systems boot up. Using Preboot Services, you can automatically or manually do the following to a device when it boots up:

- ♦ Run ZENworks imaging scripts containing any commands that you can issue at the bash prompt
- ♦ Take an image of the device's hard drives and other storage devices
- ♦ Restore an image to the device
- ♦ Take part in a session where an existing image is applied to multiple devices
- ♦ Take or restore a WIM image by using Microsoft* ImageX
- ♦ Take or restore a Ghost image by using Symantec* Ghost

To accomplish some of these tasks automatically, you simply need to have PXE (Preboot Execution Environment) enabled on your devices, then configure prebootable tasks in ZENworks Control Center and assign them to the devices. Then, the devices can automatically implement these tasks when they boot.

To manually implement the tasks, you can configure devices to require user intervention during bootup.

Using ZENworks Control Center, you can also replicate the `tftp` directory changes from a Primary Server to other Imaging servers (Primary Server or Satellite device with the Imaging role).

For more information, see the [ZENworks 10 Configuration Management Preboot Services and Imaging Reference](#).

1.1.5 Remote Management

ZENworks Configuration Management provides the ability to remotely and securely manage devices through operations such as Remote Control, Remote View, Remote Execute, Remote Diagnostics, and File Transfer.

For more information, see the [ZENworks 10 Configuration Management Remote Management Reference](#).

1.1.6 ZENworks Reporting

ZENworks Configuration Management provides advanced reporting capabilities with ZENworks Reporting Server. ZENworks Reporting Server uses an embedded BusinessObjects Enterprise XI R3.1 engine to create customized reports. You can use the predefined reports in ZENworks Reporting Server to report on Asset Management, Patch Management, Inventory, Discovery and Deployment, Bundles and Policies, and ZENworks Systems. You can also create custom reports, edit reports, assign rights on reports, and schedule reports to a set of users.

For more information, see the [ZENworks 10 Configuration Management Reporting Server Installation Guide](#) and the [ZENworks 10 Configuration Management System Reporting Reference](#).

1.1.7 Inventory Collection

ZENworks Configuration Management can gather extensive software and hardware inventory for all managed and inventoried devices, and it also enables you to create and export standard and custom reports.

For more information, see the [ZENworks 10 Configuration Management Asset Inventory Reference](#).

1.1.8 System Updates

You can update your ZENworks Configuration Management software on all devices in the Management Zone where the software is installed. Update downloads can be scheduled. Software updates are provided at the Interim Release level and you can choose whether to apply each update after viewing its content (interim releases are cumulative). You can also download the latest Product Recognition Update (PRU) to update your knowledgebase so that ZENworks Inventory can recognize newer software.

For more information, see the [ZENworks 10 Configuration Management System Administration Reference](#).

1.1.9 Asset Management

ZENworks Asset Management provides various tools to help you manage your software assets. These tools encompass three areas:

- ♦ **Software Usage:** You can track usage of software applications (including run time, active time, logged in user, machine, and application used) in your existing inventory. You can also track and report on software run via Terminal Server and Citrix, as well as Web applications run through the browser. You can run a full range of predefined software usage reports, as well as create, save, and run custom reports.
- ♦ **Contract Management:** You can define and track IT contract details, including key dates and vendor, financial, SLA, lease, and renewal information; attach related documents; associate contracts with assets, licenses, and demographic data; and create automated e-mail notifications for specified dates. You can also run a full range of predefined contract management reports, as well as create, save, and run custom reports.
- ♦ **License Management:** You can import and enter software purchase records, define license entitlements, attach supporting documentation, reconcile discovered software products to entitlements, and track ongoing compliance status. You can also run a full range of predefined license management reports, as well as create, save, and run custom reports.

For more information, see the [ZENworks 10 Asset Management Reference](#).

1.1.10 Patch Management

Patch Management lets you apply software patches automatically and consistently to minimize vulnerabilities and issues.

Patch Management stays current with the latest patches and fixes by regular Internet communication with the Patchlink Patch Subscription Service. The Enterprise Edition requires a maintenance agreement or upgrade protection with Novell.

When a new patch is available from the subscription service, a ZENworks Server automatically downloads it. You can deploy the patch to devices or disregard the patch.

For more information, see the [Novell ZENworks 10 Patch Management Reference](#).

1.1.11 Personality Migration

Personality Migration allows you to automate the process of migrating a set of customized system and application settings. A typical set of settings can be desktop wall paper, e-mail account settings, browser proxy settings, files and folders, archived e-mails, Microsoft office templates, MS Excel Macros etc. This process significantly reduces the time and effort required in setting up or re-configuring a desktop for users.

For more information, see the [ZENworks 10 Personality Migration Reference](#).

1.1.12 Linux Management

Linux Management makes it easy to embrace and extend Linux within your existing environment. It is the only solution that uses policy-driven automation to deploy, manage, and maintain Linux resources. These automated and intelligent policies allow you to provide centralized control across the life cycle of Linux systems for desktop lockdown, imaging, remote management, inventory management and software management. The result is a comprehensive Linux management solution that eliminates IT effort by dramatically reducing the required overhead needed to manage Linux systems.

For more information, see the [Novell ZENworks 7.3 Linux Management documentation Web site \(http://www.novell.com/documentation/zlm73/index.html\)](http://www.novell.com/documentation/zlm73/index.html).

1.1.13 Handheld Management

Handheld Management lets you manage Palm*, Windows CE, Pocket PC, and BlackBerry* handheld devices, including the ability to distribute applications and content to devices; secure information by using password enforcement, integration, self-destruct, and lockout capabilities; optimize low-bandwidth connectivity through the use of compression, checkpoint restart, delta technology, and configurable bandwidth technology; inventory hardware and software and use detailed queries to generate reports; automate device setup and standardize settings and programming; and retrieve files from devices to protect data and integrate it with corporate data.

For more information, see the [Novell ZENworks 7 Handheld Management documentation Web site \(http://www.novell.com/documentation/zenworks7/zen7_zhm7.html\)](http://www.novell.com/documentation/zenworks7/zen7_zhm7.html).

1.1.14 Endpoint Security Management

Endpoint Security Management simplifies endpoint security by combining security policy enforcement for data, devices, and connectivity under a single management console. This allows organizations to manage, control and enforce security policies for removable storage, wireless communications including MESH and WiMAX, application control, machine posture/integrity, data encryption, and advanced personal firewall. Its lightweight footprint in both size and traffic, its ease of management, and its comprehensive functionality earned it the Secure Computing Magazine's "Reader's Trust Award for Best Endpoint Security Solution" in 2007.

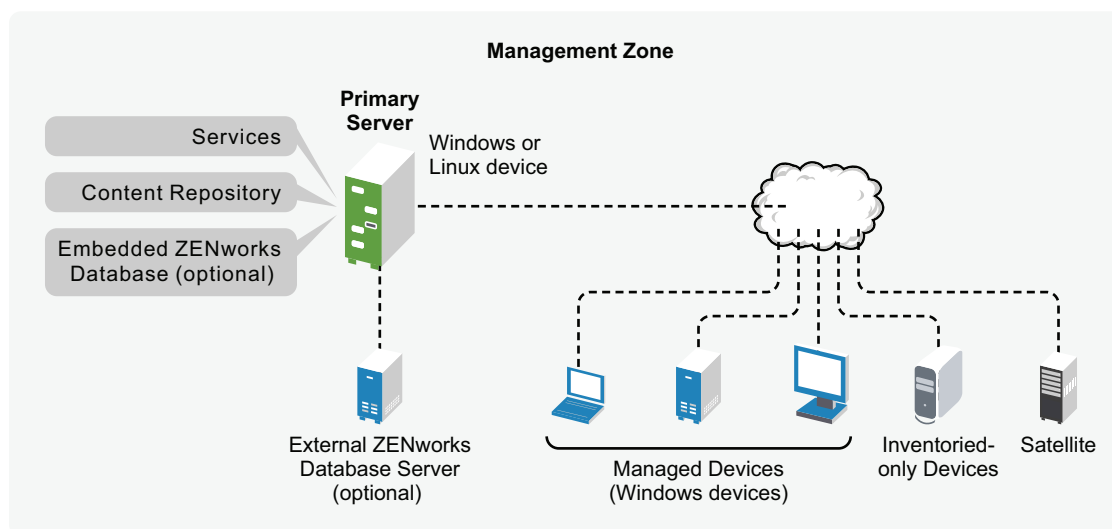
Endpoint Security Management simplifies endpoint security by putting administrators in control, combining “point” security solutions under a single, easy-to-use management console.

For more information, see the [Novell ZENworks Endpoint Security Management 4.1 documentation Web site \(http://www.novell.com/documentation/zesm41/index.html\)](http://www.novell.com/documentation/zesm41/index.html).

1.2 System Architecture

The ZENworks system architecture consists of components such as Primary Servers, Satellite Servers, and managed devices. These components are organized into management domains, referred to as Management Zones.

Figure 1-1 Management Zone



1.2.1 Primary Server

The Primary Server is the focal point of the ZENworks system. Depending on the number and location of the devices that you want to manage with ZENworks, you might need additional Primary Servers. The ZENworks services are added to each Primary Server (physical or virtual) during installation and configuration of the ZENworks software.

The Primary Server contains the following ZENworks components:

- ♦ **ZENworks services:** The ZENworks software that provides software management, policy enforcement, inventory collection, imaging, and so forth. The main services are ZENworks Server Service, ZENworks Loader, ZENworks Imaging Service, and ZENworks Management Service.
- ♦ **Content repository:** Contains the software, policies, and configuration metadata (stored in the database). The policies and software are available for delivery to managed devices within the system. The content is compressed and encrypted. By default, content is automatically replicated among all Primary Servers in the Management Zone, based on a schedule that you control. However, you can configure this to exclude certain servers.

- ♦ **ZENworks Configuration Management database:** Contains information about the software bundles for delivery, the hardware and software inventory lists collected from devices, information about the [ZENworks Control Center](#) objects (devices, users, bundles, policies, and so on), centralized system messages, license tracking, usage data and other transactional data, and the actions scheduled to take place within the system.

You can install the embedded Sybase* SQL Anywhere* database that is included with Configuration Management, or you can use an external Sybase SQL database, Oracle* 10g Standard - 10.2.0.1.0, or a Microsoft* SQL database.

The embedded database can reside on one Primary Server per Management Zone. Optionally, you can install an external database on a server that is not a Primary Server. By default, all Primary Servers require access to the ZENworks database, wherever it resides, to write their data.

You can also specify that certain servers roll up their information to other servers.

For accessibility and reliability purposes, you might want to consider locating a Microsoft SQL database in a Microsoft server cluster.

1.2.2 Satellite

A Satellite is a managed device that can perform certain roles that a ZENworks Primary Server normally performs. A Satellite can be any managed Windows device (server or workstation) or an unmanaged Linux device (server or workstation). When you configure a Satellite, you specify which roles it performs (Imaging, Collection, or Content).

A Satellite can perform the following roles:

- ♦ **Imaging:** Installs the Imaging services and adds the Imaging role to the device. With this role, the device can be used as an Imaging server to perform all the Imaging operations, such as taking an image and applying an image within as well as across subnets by using unicast or multicast imaging.
- ♦ **Collection:** If you want to improve information roll-up access for a group of devices to minimize traffic to the ZENworks Primary Server that is hosting the ZENworks database, you can enable the Collection role on a device. For example, if you have devices that are rolling up information to a Primary Server outside of their network segment, you can minimize network traffic by enabling the Collection role on a device within the network segment to accept the information from the other devices in that segment. That Collection role device is then the only device from that segment that is rolling up information to the Primary Server.
- ♦ **Content:** If you want to improve content access for a group of devices without creating another Primary Server, you can create the Content role on a device. For example, if you have devices that are accessing a Primary Server outside of their network segment, you can create the Content role on a device within the network segment to service those devices.

For more information, see “[Satellites](#)” in the [ZENworks 10 Configuration Management System Administration Reference](#).

1.2.3 Managed Device

A managed device is a Windows server or workstation that you can use ZENworks to manage. The ZENworks Adaptive Agent must be installed on each device in order for it to be managed. The Adaptive Agent communicates with a Primary Server to enable delivery of software, enforcement of configuration policies, inventorying of hardware and software, and remote management of the device.

Each managed device attempts to contact its initial Primary Server. However, if content is unavailable on that Primary Server, the managed device requests it from another Primary Server in the Management Zone, and continues until it finds a Primary Server that can provide the content.

A managed device can be registered in only one Management Zone and is therefore managed only in that zone.

1.2.4 Inventoried-Only Device

You might have devices where the Adaptive Agent cannot be installed, or devices where you do not want to install the Adaptive Agent. To inventory these devices, you can either install Inventory-Only agent or run the Portable Collector.

For more information, see the [ZENworks 10 Configuration Management Discovery, Deployment, and Retirement Reference](#).

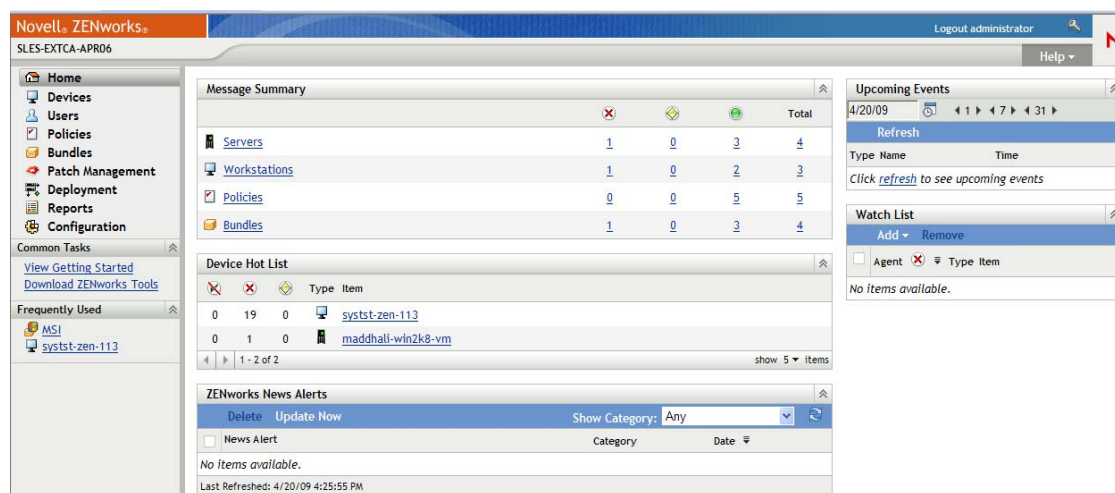
1.2.5 Management Zone

A Management Zone consists of one or more Primary Servers and one or more managed devices. The Primary Servers in the zone work together to manage the devices. The zone's information is stored in a database that resides on one of the Primary Servers or externally on another server that does not have ZENworks installed on it. The zone might also contain Satellites.

1.3 System Administration

You administer the ZENworks system at the Management Zone level through ZENworks Control Center (ZCC), a task-based Web browser console. The following graphic shows the ZCC portion of the Web browser display:

Figure 1-2 ZENworks Control Center



ZCC is installed on all Primary Servers in the Management Zone. You can perform all management tasks on any Primary Server. Because it is a Web-based management console, ZCC can be accessed from any [supported workstation](#).

If you use Novell iManager to administer other Novell products in your network environment, you can enable ZCC to be launched from iManager. For more information, see the [ZENworks 10 Configuration Management System Administration Reference](#).

In addition to ZCC, you can use the zman command line utility to manage the objects in your ZENworks system. For example, you can add content to bundles, assign policies to devices, and register devices. The main advantage to using the command line utility is the ability to create scripts for handling repetitive or mass operations.

Like ZCC, the zman utility is installed on all Primary Servers, but it can only run from the command line on the server.

1.4 ZENworks Terminology

Table 1-1 ZENworks Configuration Management Terminology

Term	Description
bundle	<p>ZENworks Configuration Management has four types of bundles:</p> <ul style="list-style-type: none"> ♦ Directive: Performs a set of tasks on managed devices on the supported platforms. In ZENworks Configuration Management, tasks are referred to as actions. It also includes personality actions such as Store Personality and Apply Personality. ♦ File: Provides file and folder copying and installation capability to managed devices. ♦ Imaging: A collection of scripts or images that are applied to a device at bootup. A Multicast Image Set bundle can also be defined for sending an image to multiple devices. A Third-Party Image bundle can be defined to specify the third-party images to be restored on a device. For more information, see the ZENworks 10 Configuration Management Preboot Services and Imaging Reference. ♦ Windows: Provides MSIs, MSPs, simple applications, thin clients, and Web applications. <p>For more information, see the ZENworks 10 Configuration Management Software Distribution Reference.</p>
content repository	<p>Contains the files, policies, and other items that are available for delivery to managed devices within the system. The content is compressed and encrypted. For more information, see “Content Repository” in the ZENworks 10 Configuration Management System Administration Reference.</p>
inventoried-only device	<p>Device where the ZENworks Adaptive Agent is not or cannot be installed. Instead, you install the Inventory Only Module on these devices so that you can use Asset Inventory to inventory them. Optionally, you can run the Portable Collector to inventory them. For more information, see “Adaptive Agent Versus Inventory-Only Module” and “Deploying the Inventory-Only Module” in the ZENworks 10 Configuration Management Discovery, Deployment, and Retirement Reference.</p>
Inventory Only Module	<p>Software installed on a device that enables it to be inventoried. This is normally installed on devices running the Mac OS* X, NetWare® 5.1/6/6.5, OES (NetWare), Unix (Sun Solaris, HP UX, or IBM AIX), or Linux operating systems, which are not supported as managed devices.</p>
managed device	<p>A Windows server or workstation that has the Adaptive Agent installed and is registered in the Management Zone.</p>
management console or administration workstation	<p>The device where you run ZENworks Control Center in your Web browser.</p>
Management Zone	<p>Consists of at least one Primary Server. It can contain other Primary Servers and one or more workstations as managed devices. It can also contain inventoried-only devices.</p> <p>For more information, see Section 1.2.5, “Management Zone,” on page 16.</p>

Term	Description
policy	A set of rules and information that can define both operating system and application configuration settings for a managed device. For more information, see the ZENworks 10 Configuration Management Policy Management Reference .
Primary Server	A machine that contains the ZENworks services and content repository. Optionally, it might also contain the ZENworks database, but on only one of the Primary Servers per zone. A Management Zone can have multiple Primary Servers.
Portable Collector	A software utility that can inventory any device and create a file that is accessible in ZENworks Control Center as if it were a device. This file is then used for obtaining inventory data about the device. For more information, see “Using the Portable Collector” in the ZENworks 10 Configuration Management Asset Inventory Reference .
Remote Management Service	A managed device component that enables remote operators to perform remote sessions on the device. For more information, see the ZENworks 10 Configuration Management Remote Management Reference .
Remote Management Proxy	A proxy server that forwards Remote Management operation requests from the Remote Management Viewer to a managed device. The proxy is useful when the viewer cannot directly access a managed device that is in a private network or on the other side of a firewall or router that is using NAT (Network Address Translation). As a prerequisite, the proxy must be installed on a Windows managed device. For more information, see the ZENworks 10 Configuration Management Remote Management Reference .
Satellite	<p>A Satellite is a device that can perform certain roles that a ZENworks Primary Server normally performs. A Satellite can be any managed Windows device (server or workstation) or an unmanaged Linux device (server or workstation). When you configure a Satellite device, you specify which roles it performs (Imaging, Collection, or Content).</p> <p>For more information, see “Satellites” in the ZENworks 10 Configuration Management System Administration Reference.</p>
ZENworks Adaptive Agent	Software installed on a Windows server or workstation that enables it to be managed by a Primary Server. The Adaptive Agent consists of modules that support software delivery, policy enforcement, imaging, remote management, inventory, and so forth. For more information, see “ZENworks Adaptive Agent Deployment” in the ZENworks 10 Configuration Management System Administration Reference .
ZENworks Control Center	The Web-based administrative console used to manage the ZENworks Configuration Management system. For more information, see “ZENworks Control Center” in the ZENworks 10 Configuration Management Administration Quick Start .

Term	Description
ZENworks Configuration Management database	<p>The database that contains information about the software available for delivery, the hardware and software inventory lists collected from devices, and the actions scheduled to take place within the system.</p> <p>The database can reside on a Primary Server, or it can reside on a remote server as an external database. By default, all Primary Servers require access to the database.</p> <p>For information on supported databases, see “Database Requirements” in the <i>ZENworks 10 Configuration Management Installation Guide</i>. For more information on the ZENworks database, see “Database Management” in the <i>ZENworks 10 Configuration Management System Administration Reference</i>.</p>
zman	<p>A command line interface for managing your ZENworks system. The zman utility is useful for automating tasks (through scripts) and performing mass management tasks that might be tedious to perform in ZENworks Control Center. For example, configuring settings for a large number of devices, or adding an action to a large number of bundles.</p> <p>Zman is available on all Primary Servers.</p> <p>For more information, see “ZENworks Command Line Utilities” in the <i>ZENworks 10 Configuration Management Command Line Utilities Reference</i>.</p>
zac	<p>A command line management interface for the Novell ZENworks Adaptive Agent. The zac utility performs command line management functions on the ZENworks managed device, including installing and removing software bundles, applying policies, and registering and unregistering the device.</p>

Installation and Setup Documentation

2

To install, migrate to, and set up Novell® ZENworks® 10 Configuration Management SP2, follow the applicable instructions:

- ♦ *[ZENworks 10 Configuration Management Installation Guide](#)*
Provides instructions on establishing the ZENworks Management Zone with one or more ZENworks Primary Servers. Includes instructions for GUI, command line, or silent installations.
- ♦ *[ZENworks 10 Configuration Management Reporting Server Installation Guide](#)*
Provides instructions for installing ZENworks Reporting Server for ZENworks infrastructure reporting.
- ♦ *[ZENworks 10 Configuration Management Upgrade Guide](#)*
Provides information to help you successfully upgrade to Novell ZENworks 10 Configuration Management SP2.
- ♦ *[ZENworks 10 Configuration Management ZENworks Migration Guide](#)*
Provides instructions on how to migrate your traditional ZENworks Novell eDirectory™ data into the ZENworks Configuration Management database. This includes migrating information from Application, Imaging, Policy, and Workstation objects, including associations and zone settings. It does not include migrating User objects. Instead, Configuration Management reads from existing user sources. It also does not migrate inventory data; that is done with the ZENworks Asset Management Migration Utility.
- ♦ *[Novell ZENworks 10 Asset Management Migration Guide](#)*
Provides instructions on how to migrate your Asset Inventory data to Configuration Management.
- ♦ *[ZENworks 10 Personality Migration Reference](#)*
Provides instructions on the setup and installation of Personality Migration, and the use of Desktop DNA* for migrating, upgrading, and backing up devices.
- ♦ *[ZENworks 7.3 Linux Management Installation Guide \(http://www.novell.com/documentation/zlm73/lm7install/data/front.html\)](http://www.novell.com/documentation/zlm73/lm7install/data/front.html)*
Provides instructions on how to install Linux Management.
- ♦ *[ZENworks 7 Handheld Management Installation Guide \(http://www.novell.com/documentation/zenworks7/hm7install/data/a20gkue.html\)](http://www.novell.com/documentation/zenworks7/hm7install/data/a20gkue.html)*
Provides instructions on how to install Handheld Management.
- ♦ *[ZENworks 10 Configuration Management Administration Quick Start](#)*
ZENworks Configuration Management is ready to use out of the box, but you probably want to configure it to suit your environment. The *Administration Quick Start* includes basic instructions for:
 - ♦ Zone configuration
 - ♦ ZENworks Adaptive Agent deployment

- ♦ Device management
- ♦ System messaging and reporting
- ♦ *AdminStudio 9.5 ZENworks Edition Installation Guide* (<http://www.novell.com/documentation/zcm10/pdfdoc/adminstudio/AS95ZENInstallGuide.pdf>)

Provides information to install and activate AdminStudio*.

The following references for Novell® ZENworks® 10 Configuration Management SP2 provide overviews, setup instructions, usage instructions, ongoing management instructions, and other information:

- ♦ [*ZENworks 10 Configuration Management Administration Quick Start*](#)
Provides instructions on how to set up Configuration Management for your network, including short tasks to familiarize you with the features of the product.
- ♦ [*ZENworks 10 Configuration Management System Administration Reference*](#)
Provides instructions on folder and group organization in ZCC, user sources, ZENworks administrator accounts, Management Zone configuration settings, alternate content repository configuration, database maintenance, and so on.
- ♦ [*ZENworks 10 Configuration Management Command Line Utilities Reference*](#)
Provides instructions on the zman, zac, and zeninfocollect command line utilities.
- ♦ [*ZENworks 10 Configuration Management Discovery, Deployment, and Retirement Reference*](#)
Provides instructions on device registration, the ZENworks Adaptive Agent, network device discovery, device importing, inventoried-only device setup, and deployment tasks.
- ♦ [*ZENworks 10 Configuration Management Software Distribution Reference*](#)
Provides instructions on software distribution through bundle creation and management, bundle assignments, bundle scheduling, and actions that can be added to bundles.
- ♦ [*ZENworks 10 Configuration Management Policy Management Reference*](#)
Provides instructions on policy creation and application for configuring operating system and application settings.
- ♦ [*ZENworks 10 Configuration Management Preboot Services and Imaging Reference*](#)
Provides instructions on Preboot Services setup, device imaging, Imaging bundles, and manual imaging operations.
- ♦ [*ZENworks 10 Configuration Management Remote Management Reference*](#)
Provides instructions on how to remotely manage and control devices.
- ♦ [*ZENworks 10 Configuration Management Asset Inventory Reference*](#)
Provides instructions on software and hardware inventory collection, including how to scan, view individual device inventory information, and generate inventory reports.
- ♦ [*ZENworks 10 Asset Management Reference*](#)
Provides instructions on how to manage your software assets.
- ♦ [*ZENworks 10 Configuration Management System Reporting Reference*](#)
Provides instructions on how to perform BusinessObjects® Enterprise XI reporting on your ZENworks infrastructure.
- ♦ [*Novell ZENworks 10 Patch Management Reference*](#)
Provides instructions on automated patch application to minimize vulnerabilities and compliance issues.

- ♦ *ZENworks 7.3 Linux Management Administration Guide* (<http://www.novell.com/documentation/zlm73/lm7admin/data/front.html>)
Provides instructions on how to manage Linux devices.
- ♦ *ZENworks 7 Handheld Management Administration Guide* (<http://www.novell.com/documentation/zenworks7/hm7admin/data/a20gkue.html>)
Provides instructions on how to set up and manage handheld devices.
- ♦ *ZENworks Endpoint Security Management 3.5* (<http://www.novell.com/documentation/zesm35/index.html>)
Provides installation, administration, and end-user information about managing and securing endpoint devices in your environment.
- ♦ *AdminStudio 9.5 ZENworks Edition User Guide* (<http://www.novell.com/documentation/zcm10/pdfdoc/adminstudio/AS95UserGuide.pdf>)
Provides administration and end-user information about the functionality and features of all of the components of AdminStudio.

Documentation Updates

A

This section contains information on documentation content changes that were made in this *Enterprise Edition Getting Started Guide* for Novell® ZENworks® 10 Configuration Management SP2. The information can help you to keep current on updates to the documentation.

The documentation for this product is provided on the Web in two formats: HTML and PDF. The HTML and PDF documentation are both kept up-to-date with the changes listed in this section.

If you need to know whether a copy of the PDF documentation that you are using is the most recent, the PDF document includes a publication date on the title page.

The documentation was updated on the following date:

- ♦ [Section A.1, “February 01, 2010,” on page 25](#)
- ♦ [Section A.2, “May 27, 2009: SP2 \(10.2\),” on page 25](#)

A.1 February 01, 2010

Updates were made to the following sections:

Location	Update
Chapter 2, “Installation and Setup Documentation,” on page 21	Listed <i>AdminStudio 9.5 ZENworks Edition Installation Guide</i> .
Chapter 3, “Administration Documentation,” on page 23	Replaced <i>AdminStudio 9.0 Standard Edition User Guide</i> with <i>AdminStudio 9.5 ZENworks Edition User Guide</i> because ZENworks 10 Configuration Management SP2 currently supports AdminStudio 9.5.

A.2 May 27, 2009: SP2 (10.2)

Updates were made to the following sections:

Location	Update
Section 1.1, “Management Capabilities,” on page 9	Updated with ZENworks 10 Configuration Management SP2 features.
Section 1.2.2, “Satellite,” on page 15	Added information about using an unmanaged Linux device (server or workstation) to perform Satellite roles.
Section 1.4, “ZENworks Terminology,” on page 18	Added information about using an unmanaged Linux device (server or workstation) to perform Satellite roles.

