

Personality Migration Reference

Novell® ZENworks® 10 Personality Migration

10.2

May 27, 2009

www.novell.com



Legal Notices

Novell, Inc., makes no representations or warranties with respect to the contents or use of this documentation, and specifically disclaims any express or implied warranties of merchantability or fitness for any particular purpose. Further, Novell, Inc., reserves the right to revise this publication and to make changes to its content, at any time, without obligation to notify any person or entity of such revisions or changes.

Further, Novell, Inc., makes no representations or warranties with respect to any software, and specifically disclaims any express or implied warranties of merchantability or fitness for any particular purpose. Further, Novell, Inc., reserves the right to make changes to any and all parts of Novell software, at any time, without any obligation to notify any person or entity of such changes.

Any products or technical information provided under this Agreement may be subject to U.S. export controls and the trade laws of other countries. You agree to comply with all export control regulations and to obtain any required licenses or classification to export, re-export or import deliverables. You agree not to export or re-export to entities on the current U.S. export exclusion lists or to any embargoed or terrorist countries as specified in the U.S. export laws. You agree to not use deliverables for prohibited nuclear, missile, or chemical biological weaponry end uses. See the [Novell International Trade Services Web page \(http://www.novell.com/info/exports/\)](http://www.novell.com/info/exports/) for more information on exporting Novell software. Novell assumes no responsibility for your failure to obtain any necessary export approvals.

Copyright © 2008-2009 Novell, Inc. All rights reserved. No part of this publication may be reproduced, photocopied, stored on a retrieval system, or transmitted without the express written consent of the publisher.

Novell, Inc., has intellectual property rights relating to technology embodied in the product that is described in this document. In particular, and without limitation, these intellectual property rights may include one or more of the U.S. patents listed on the [Novell Legal Patents Web page \(http://www.novell.com/company/legal/patents/\)](http://www.novell.com/company/legal/patents/) and one or more additional patents or pending patent applications in the U.S. and in other countries.

Novell, Inc.
404 Wyman Street, Suite 500
Waltham, MA 02451
U.S.A.
www.novell.com

Online Documentation: To access the latest online documentation for this and other Novell products, see the [Novell Documentation Web page \(http://www.novell.com/documentation\)](http://www.novell.com/documentation).

Novell Trademarks

For Novell trademarks, see [the Novell Trademark and Service Mark list \(http://www.novell.com/company/legal/trademarks/tmlist.html\)](http://www.novell.com/company/legal/trademarks/tmlist.html).

Third-Party Materials

All third-party trademarks are the property of their respective owners.

Contents

About This Guide	7
1 What Is Novell ZENworks Personality Migration?	9
1.1 Migrating User Accounts	9
1.2 Migrating System Settings	10
1.3 Migrating Applications	10
1.4 Migrating Files and Folders	10
2 Installing ZENworks Personality Migration	11
2.1 System Requirements	11
2.2 Installing ZENworks Personality Migration on Windows	11
2.3 Installing ZENworks Personality Migration by Using ZENworks Bundles	11
2.4 Installing the ZENworks Personality Migration Core	12
2.5 Installation Options	12
3 Uninstalling Personality Migration	15
3.1 Uninstalling Personality Migration by Using the ZENworksPersonalityMigration.exe file	15
3.2 Uninstalling Personality Migration by Using the Command Line Utility	15
3.3 Uninstalling Personality Migration by Using Windows Add or Remove Programs	15
4 Manually Migrating Personality Settings	17
4.1 Storing a User's Personality Settings and Data	17
4.1.1 Enabling ZENworks Personality Migration through the Windows Firewall	22
4.2 Applying a User's Personality Settings and Data	22
5 Automatically Migrating Personality Settings	27
5.1 Creating a Personality Template	27
5.1.1 Starting the Template Builder	27
5.1.2 Using the Template Builder to Create a Template	28
5.2 Modifying an Existing Template	37
5.3 Automatically Migrating Personality Settings	37
5.4 Migrating Personality Settings by Using the Command Prompt	38
5.5 Command Prompt Options to Store and Apply Personalities	38
A Best Practices	39
A.1 Storing and Applying Personalities	39
A.2 Setting the Length of the Computer Name	39
B Troubleshooting Personality Migration	41
C Migration Settings	

D	Supported Settings in Personality Migration	45
D.1	System Settings	45
D.2	Application Settings	46
D.2.1	Adobe Applications	46
D.2.2	Corel Applications	46
D.2.3	IBM Applications	47
D.2.4	Microsoft Applications	47
D.2.5	Palm Applications	49
D.2.6	Qualcomm Applications	49
D.2.7	Research in Motion Applications	49
D.2.8	Sun Applications	49
D.2.9	America Online Applications	50
D.2.10	GAIM Applications	51
D.2.11	Mozilla Foundation Applications	51
D.2.12	OpenOffice.org Applications	53
E	Cross-User Migration Scenarios	55
E.1	Migration Scenarios If the PNP file has the personalities of all users	55
E.2	Migration Scenarios If the PNP file has the personality of the currently logged-in user.	56
E.3	Migration Scenarios If the PNP File has the Personality of a Specific User.	58
E.4	Migration Scenarios If the PNP File has the Personalities of Multiple Specific Users	59
F	Documentation Updates	63
F.1	May 27, 2009: SP2 (10.2)	63

About This Guide

This *Novell ZENworks Configuration Personality Migration Reference* consists of conceptual information to help you install and use Novell® ZENworks® Personality Migration.

The sections include:

- ♦ Chapter 1, “What Is Novell ZENworks Personality Migration?,” on page 9
- ♦ Chapter 2, “Installing ZENworks Personality Migration,” on page 11
- ♦ Chapter 4, “Manually Migrating Personality Settings,” on page 17
- ♦ Chapter 5, “Automatically Migrating Personality Settings,” on page 27
- ♦ Appendix A, “Best Practices,” on page 39
- ♦ Appendix B, “Troubleshooting Personality Migration,” on page 41
- ♦ Appendix C, “Migration Settings,” on page 43
- ♦ Appendix D, “Supported Settings in Personality Migration,” on page 45
- ♦ Appendix E, “Cross-User Migration Scenarios,” on page 55
- ♦ Appendix F, “Documentation Updates,” on page 63

Audience

This guide is intended for network administrators and IT professionals who manage network resources, and who want to use ZENworks Personality Migration to preserve the applications and configurations on network workstations when users begin using new hardware.

Feedback

We want to hear your comments and suggestions about this manual and the other documentation included with this product. Please use the User Comments feature at the bottom of each page of the online documentation, or go to the [Novell Documentation Feedback site \(http://www.novell.com/documentation/feedback.html\)](http://www.novell.com/documentation/feedback.html) and enter your comments there.

Additional Documentation

ZENworks 10 Configuration Management is supported by other documentation (in both PDF and HTML formats) that you can use to learn about and implement the product. For additional documentation, see the [ZENworks 10 Configuration Management SP2 documentation \(http://www.novell.com/documentation/zcm10/\)](http://www.novell.com/documentation/zcm10/).

Documentation Conventions

In Novell documentation, a greater-than symbol (>) is used to separate actions within a step and items in a cross-reference path.

A trademark symbol (®, ™, etc.) denotes a Novell trademark. An asterisk (*) denotes a third-party trademark.

When a single pathname can be written with a backslash for some platforms or a forward slash for other platforms, the pathname is presented with a backslash. Users of platforms that require a forward slash, such as Linux*, should use forward slashes as required by your software.

What Is Novell ZENworks Personality Migration?

1

Novell® ZENworks® Personality Migration is part of the Novell ZENworks Configuration Management product line.

A personality is a collection of applications and system settings that a user commonly uses on a device. Typical settings can be desktop wallpaper, e-mail account settings, browser proxy settings, files and folders, archived e-mails, Microsoft office templates, Microsoft Office macros, etc.

ZENworks Personality Migration provides a way to automate this process, both on a standalone device or from a centrally managed console. The process significantly reduces the time and effort required in setting up or reconfiguring a desktop for users. This is particularly useful while provisioning new desktops and applications.

ZENworks Personality Migration allows you to store the personality of a Windows* user and migrate the personality to another Windows user. For enterprise-scale migrations, you can use ZENworks Configuration Management to distribute Directive bundles to store and apply personality settings to the users.

The Personality Migration utility is provided with ZENworks Configuration Management. For more information on installing the utility, see [Chapter 2, “Installing ZENworks Personality Migration,” on page 11](#).

The utility allows you to:

- ◆ Store the personality of one or more users on a Windows device to a compressed and password-protected personality file.
- ◆ Apply the personality settings from a personality file to a Windows desktop.
- ◆ Directly migrate the personality data from the desktops of one or more users on a Windows device to the users on another Windows device without any intermediate file, if the two devices are interconnected.

Review the following sections:

- ◆ [Section 1.1, “Migrating User Accounts,” on page 9](#)
- ◆ [Section 1.2, “Migrating System Settings,” on page 10](#)
- ◆ [Section 1.3, “Migrating Applications,” on page 10](#)
- ◆ [Section 1.4, “Migrating Files and Folders,” on page 10](#)

1.1 Migrating User Accounts

ZENworks Personality Migration allows you to migrate the user profiles for the user who has logged on to the device, or for multiple users. You can select the local users or domain users whose personalities you want to migrate. You can also map the users to apply the personalities. You can apply these personalities to a single user or multiple users.

1.2 Migrating System Settings

You can migrate the following system settings:

- ♦ Accessibility
- ♦ Appearance
- ♦ Date and regional Settings
- ♦ Keyboard, mouse, and other hardware
- ♦ Network settings
- ♦ Sounds and multimedia

For a detailed list of the settings, see [Appendix D, “Supported Settings in Personality Migration,” on page 45](#).

IMPORTANT: You can migrate the network settings only in the File mode. For more information, see [Appendix B, “Troubleshooting Personality Migration,” on page 41](#)

1.3 Migrating Applications

You can migrate the applications of the following companies:

- ♦ Adobe*
- ♦ America Online*
- ♦ Corel*
- ♦ GAIM
- ♦ IBM*
- ♦ Macromedia*
- ♦ Microsoft*
- ♦ Mozilla*
- ♦ OpenOffice.org*
- ♦ Palm*
- ♦ Qualcomm*
- ♦ Research in Motion*
- ♦ Sun*

For a detailed list of the applications, versions, and settings, see [Appendix D, “Supported Settings in Personality Migration,” on page 45](#).

1.4 Migrating Files and Folders

You can select to migrate files, file types, or folders. You can also select the location on the destination device to store these files and folders.

Installing ZENworks Personality Migration

2

You can run Novell® ZENworks® Configuration Management Personality Migration on a Windows workstation. ZENworks Personality Migration allows you to migrate personality from a Windows device to another Windows device.

- Section 2.1, “System Requirements,” on page 11
- Section 2.2, “Installing ZENworks Personality Migration on Windows,” on page 11
- Section 2.3, “Installing ZENworks Personality Migration by Using ZENworks Bundles,” on page 11
- Section 2.4, “Installing the ZENworks Personality Migration Core,” on page 12
- Section 2.5, “Installation Options,” on page 12

2.1 System Requirements

ZENworks Personality Migration is supported on the following platforms in Microsoft Windows:

- Windows 2000 Professional SP4 (only the 32-bit operating system version)
- Windows Vista* (both 32-bit and 64-bit operating system versions)
- Vista SP1 (both 32-bit and 64-bit operating system versions)
- Windows XP Professional SP2 (only the 32-bit operating system version)
- Windows XP Professional SP3 (only the 32-bit operating system version)

To successfully store a personality to a device, the device must have at least double the amount or greater free disk space than the size of the personality being stored.

For example, to successfully store a personality of 1 GB, the device on which you are storing the personality must have a free disk space of at least 2*1 GB or greater.

2.2 Installing ZENworks Personality Migration on Windows

- 1 In your Web browser, access the following URL:
`http://zenworks_primary_server_id/zenworks-setup/?pageId=tools.`
- 2 Download `ZENworksPersonalityMigration.exe` to a temporary location.
- 3 Run `ZENworksPersonalityMigration.exe` and follow the on-screen prompts to install it on your workstation.

2.3 Installing ZENworks Personality Migration by Using ZENworks Bundles

- 1 In your Web browser, access the following URL:

http://zenworks_primary_server_id/zenworks-setup/?pageId=tools.

- 2 Download `ZenworksPersonalityMigration.exe` to a temporary location.
- 3 Create an *Install File(s)* action by using the `ZenworksPersonalityMigration.exe` file located on the ZENworks server. Specify a destination folder on the managed device to install this file.

For example, you can specify the destination folder as `C:\Install`.

- 4 Add a *Launch Windows Executable* action in the install set of the bundle that you created. Specify the path where the `ZenworksPersonalityMigration.exe` file is located on the managed device in the *Command* option.

For example, if the `ZenworksPersonalityMigration.exe` file is located in `C:\Install` on the managed device, then the path is `C:\Install\ZenworksPersonalityMigration.exe`.

- 5 In the *Command Line Parameter*, enter `/quiet` to install Personality Migration without user intervention.
- 6 Click the *More Options* link and do the following:
 - 6a Set the *Executable security level* to *Run as dynamic administrator*.
 - 6b Set the *Wait before proceeding to next action* to *When action is complete*.
- 7 Assign this bundle to the managed device.

2.4 Installing the ZENworks Personality Migration Core

You can migrate a personality either by using a graphical user interface or by using a command line. To use the command line option, you need the ZENworks Personality Migration Core. The graphical user interface option and the Core option are installed automatically when you install ZENworks Personality Management, or you can choose to install only the Core option.

You can install the ZENworks Personality Migration Core separately by using the `ZenworksPersonalityMigration.exe /coreonly` command. For more information, see [Section 2.5, “Installation Options,” on page 12](#).

2.5 Installation Options

The following table lists the options that can be used with the `ZenworksPersonalityMigration.exe` command:

Table 2-1 *Installation Options*

Option	Description
<code>/?</code>	Displays help and the available options
<code>/passive</code>	Displays the progress of installation; does not require user intervention
<code>/quiet</code>	Installs Personality Migration silently without the graphical user interface
<code>/uninstall</code>	Uninstalls ZENworks Personality Migration
<code>/coreonly</code>	Install ZENworks Personality Migration without using the Graphical User Interface

Option	Description
/repair	Repairs the installed version of ZENworks Personality Migration
IMPORTANT: The options listed are case sensitive.	

Uninstalling Personality Migration

3

You can uninstall Personality Migration in any of the following ways:

- ♦ [Section 3.1, “Uninstalling Personality Migration by Using the ZENworksPersonalityMigration.exe file,” on page 15](#)
- ♦ [Section 3.2, “Uninstalling Personality Migration by Using the Command Line Utility,” on page 15](#)
- ♦ [Section 3.3, “Uninstalling Personality Migration by Using Windows Add or Remove Programs,” on page 15](#)

IMPORTANT: Before uninstalling Personality Migration, ensure that you close the Personality Migration application and the Personality Migration template builder.

3.1 Uninstalling Personality Migration by Using the ZENworksPersonalityMigration.exe file

- 1 Go to the location where the `ZENworksPersonalityMigration.exe` file is located and double-click the file.
- 2 On the Welcome to ZENworks Personality Migration Setup page, click *Next*.
- 3 Select *Remove*, then click *Next*.

3.2 Uninstalling Personality Migration by Using the Command Line Utility

- 1 At the Windows command prompt, go to the location where the `ZENworksPersonalityMigration.exe` file is located.
- 2 Run the `ZENworksPersonalityMigration.exe /uninstall` command.

or

To perform a silent uninstallation, run the following command:

```
ZENworksPersonalityMigration.exe /uninstall /quiet
```

3.3 Uninstalling Personality Migration by Using Windows Add or Remove Programs

- 1 On the desktop, click *Start > Settings > Control Panel > Add or Remove Programs*.
- 2 In the Add or Remove Programs window, select *ZENworks Personality Migration*, then click *Remove*.

Manually Migrating Personality Settings

4

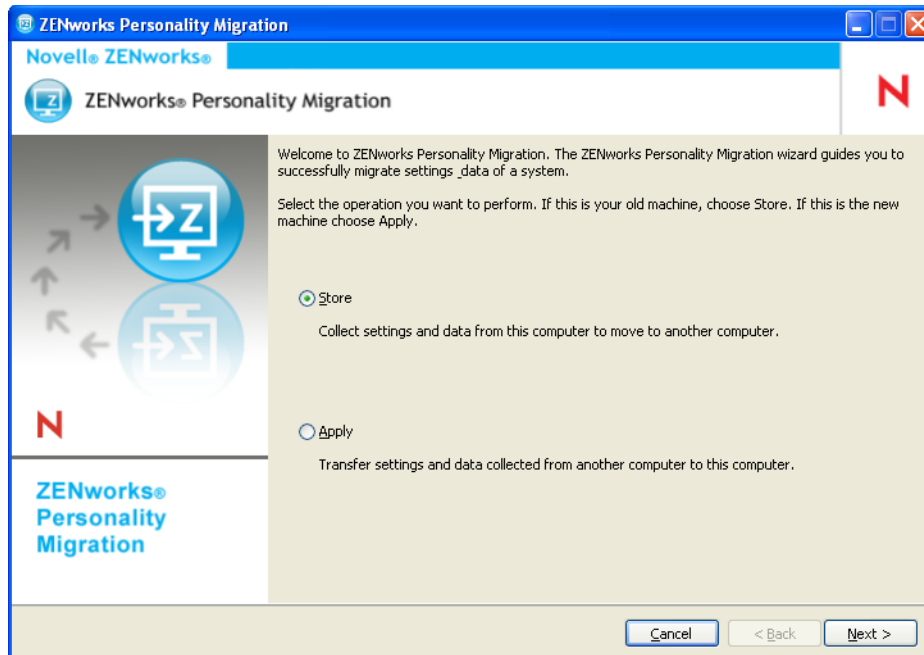
ZENworks® Personality Migration allows you to store a user's personality and migrate the personality from a Windows device to another Windows device.

To manually migrate the personality settings, perform the following tasks in the order listed:

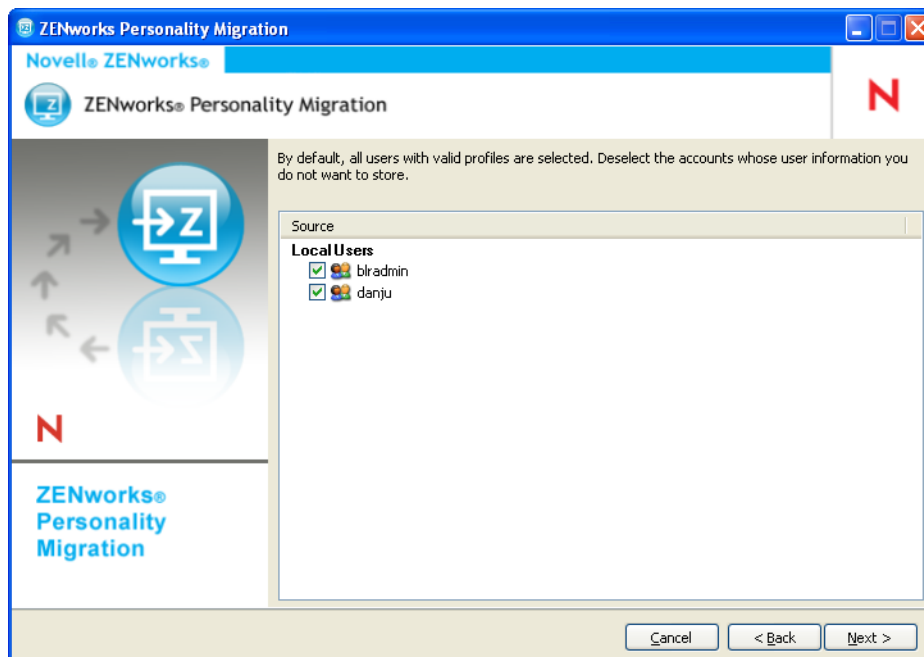
- ♦ [Section 4.1, “Storing a User’s Personality Settings and Data,” on page 17](#)
- ♦ [Section 4.2, “Applying a User’s Personality Settings and Data,” on page 22](#)

4.1 Storing a User’s Personality Settings and Data

- 1 Before beginning the migration process, do the following:
 - ❑ Ensure that the ZENworks Personality Migration is installed on the source device. For more information, see [Section 2.2, “Installing ZENworks Personality Migration on Windows,” on page 11](#).
 - ❑ Close the applications whose settings you want to migrate. (You are also prompted to close any open applications upon launching ZENworks Personality Migration).
 - ❑ If you are migrating system settings and user settings across interconnected devices without using an intermediate file, you must make sure that the Windows Firewall has been enabled to treat the Personality Migration software as an exception, so applications can interact with each other. For more information, see [Section 4.1.1, “Enabling ZENworks Personality Migration through the Windows Firewall,” on page 22](#).
 - ❑ If you want to migrate personality for multiple user accounts on the device, then log in as a user with administrator privileges.
- 2 Use one of the following methods to launch ZENworks Personality Migration:
 - ♦ Click the ZENworks Personality Migration shortcut icon on the desktop.
 - ♦ Click *Start > All Programs > Novell ZENworks > ZENworks Personality Migration*.

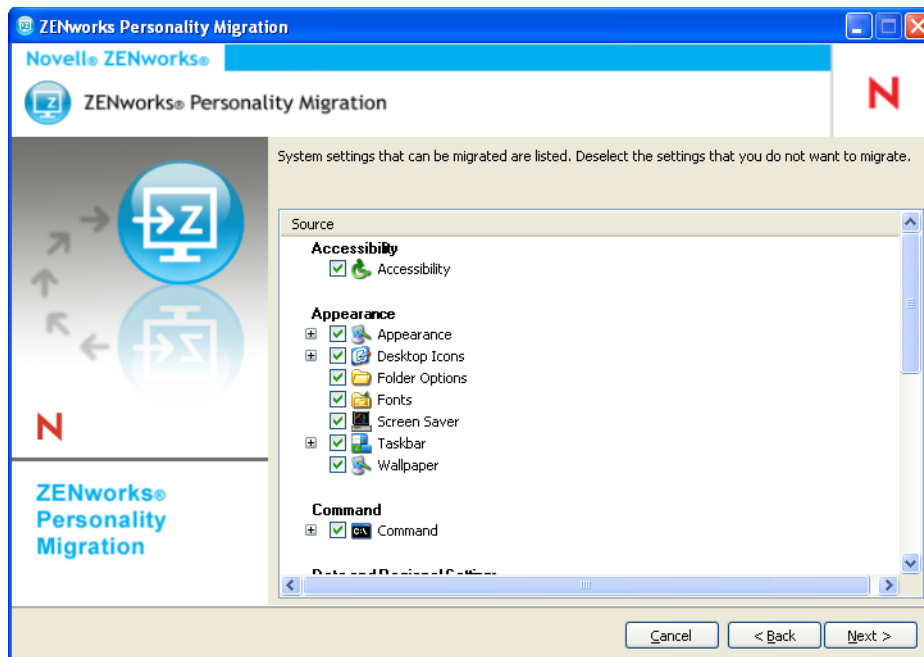


- 3 Click *Store* to store the user account information, system settings, application settings and data of the source system to a PNP (Platform Neutral Package) file.
- 4 Click *Next* to search the source system for the user information and the installed applications whose settings you can migrate. This can take several minutes.

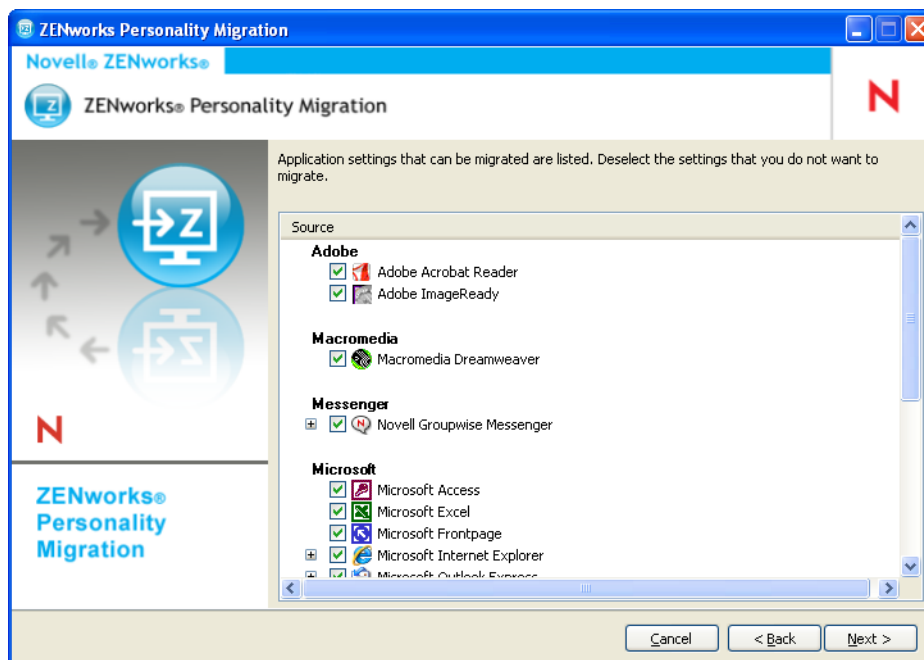


By default, all the user accounts listed are selected.

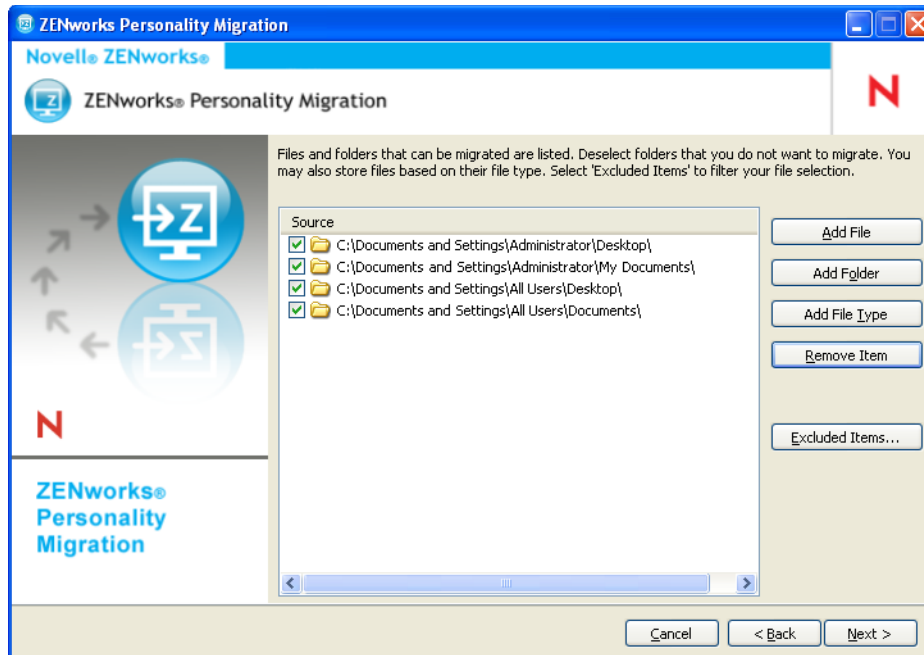
- 5 Deselect the user account whose settings you do not want to migrate
- 6 Click *Next* to deselect the system settings you do not want to migrate.



7 Click *Next* to deselect the application settings you do not want to migrate.

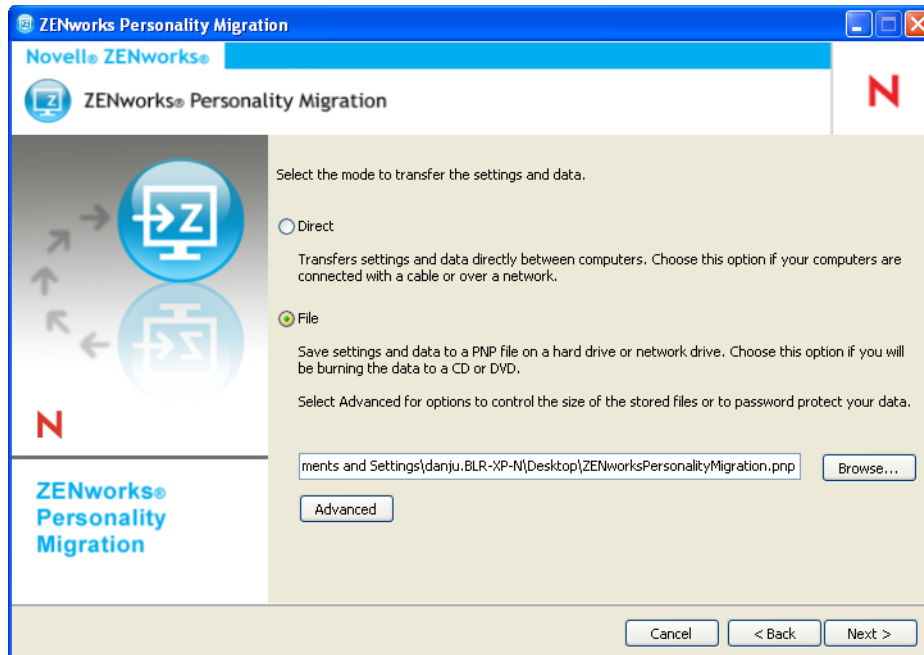


8 Click *Next* to deselect the files and folders you do not want to migrate.



This page also enables you to add files, folders or files of a particular type to the list of migration files.

- 9 (Optional) Click *Add File* to add a file to migrate. The added file is listed in the *Source* column.
- 10 (Optional) Click *Add Folder* to add a folder to migrate. The added folder is listed in the *Source* column.
- 11 (Optional) Click *Add File Type* to specify the types of files you want to migrate.
- 12 (Optional) Click *Remove Item* to remove the highlighted item from the list of items to be migrated.
- 13 (Optional) Click *Exclude Item* to exclude any files and folders you do not want to migrate.
- 14 Click *Next*, then select the mode to transfer the settings and data:

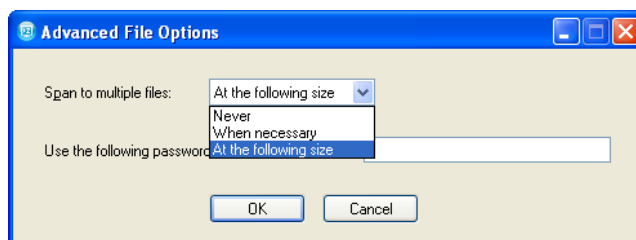


- ♦ **Direct:** Provides real-time migration of settings and data between systems in the same subunit. Continue with [Step 15](#).

IMPORTANT: Do not migrate network settings in the Direct mode. For more information, see [Appendix B, “Troubleshooting Personality Migration,”](#) on page 41. Alternatively, you can migrate the network settings in the File mode.

- ♦ **File:** Stores the migration settings and data in a PNP file. Specify the filename or click *Browse* to browse to and select the file for store the settings and data. Skip to [Step 17](#).

- 15 Click *Next*. The source system waits for the destination system to connect.
- 16 On the destination system where ZENworks Personality Migration is installed, select the source system whose settings and data you want to apply. Click *Next*, then continue with [Step 6](#) in [Section 4.2, “Applying a User’s Personality Settings and Data,”](#) on page 22.
- 17 Click *Advanced* to display the Advanced File Options dialog box.



ZENworks Personality Migration can store the settings and data from your system in multiple files. By default, it creates 650 MB files. The *Span to multiple files* option allows you to control the size of the Personality Migration output files.

The *Use the following password to encrypt the PNP file* option password protects the data files that Personality Migration generates. You are prompted for the password when you apply the settings on the destination machine.

- 18 Click *OK* to close the Advanced File Options dialog box.
- 19 Click *Next* to display the progress of the settings and files being stored.
- 20 Click *Next* to review the results. The errors are displayed in red color.
- 21 Click *Finish* to complete the store process.

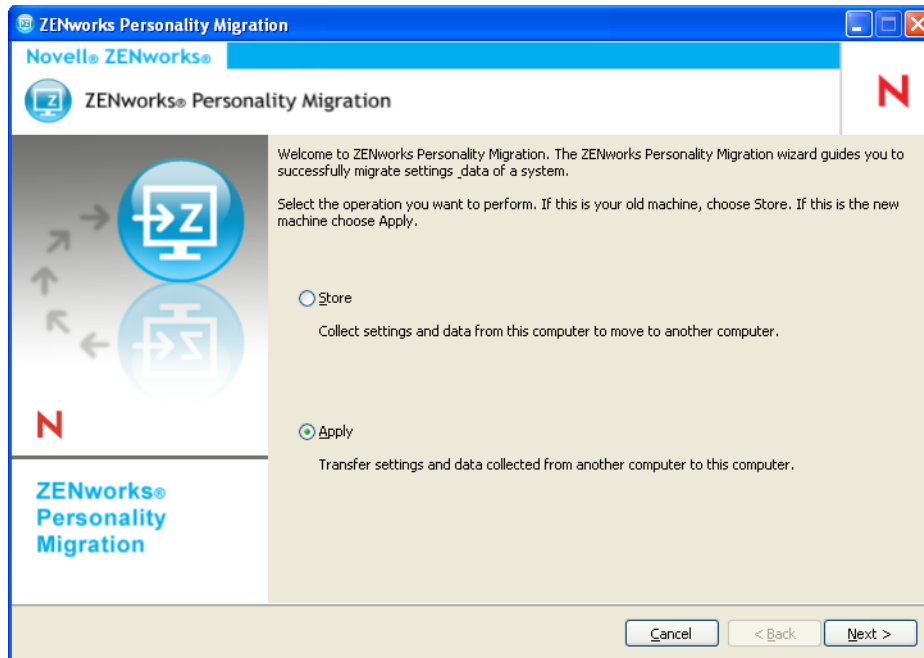
4.1.1 Enabling ZENworks Personality Migration through the Windows Firewall

If you are migrating personalities across devices on a network by using the Direct mode, you must enable the Windows Firewall to detect certain exceptions.

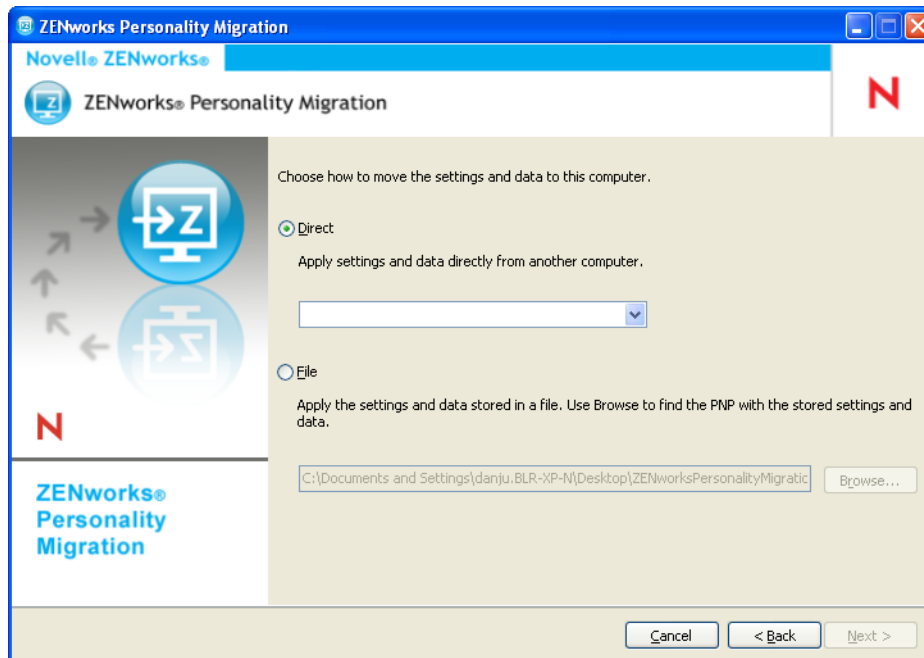
- 1 Click *Start > Settings > Control Panel*.
- 2 Double-click *Windows Firewall* to open the Windows Firewall dialog box.
- 3 Click the *Exceptions* tab.
- 4 In the *Programs and Services* list, check to see if ZENworks Personality Migration and ZENworks Personality Core exceptions are available and selected. If they are, proceed to **Step 7**.
- 5 If the exceptions are not available in the *Programs and Services* list, then click *Add Program*.
- 6 Browse to the Personality Migration installation folder and select the `PersonalityMigration.exe` and `PersonalityMigrationCore.exe` files.
- 7 Click *OK*.

4.2 Applying a User's Personality Settings and Data

- 1 Ensure that Personality Migration is installed on the destination device. For more information, see **Section 2.2, "Installing ZENworks Personality Migration on Windows," on page 11**.
- 2 Use one of the following methods to launch ZENworks Personality Migration on the system as follows:
 - ♦ Click the *ZENworks Personality Migration* shortcut icon on the desktop.
 - ♦ Click *Start > All Programs > Novell ZENworks > ZENworks Personality Migration*.

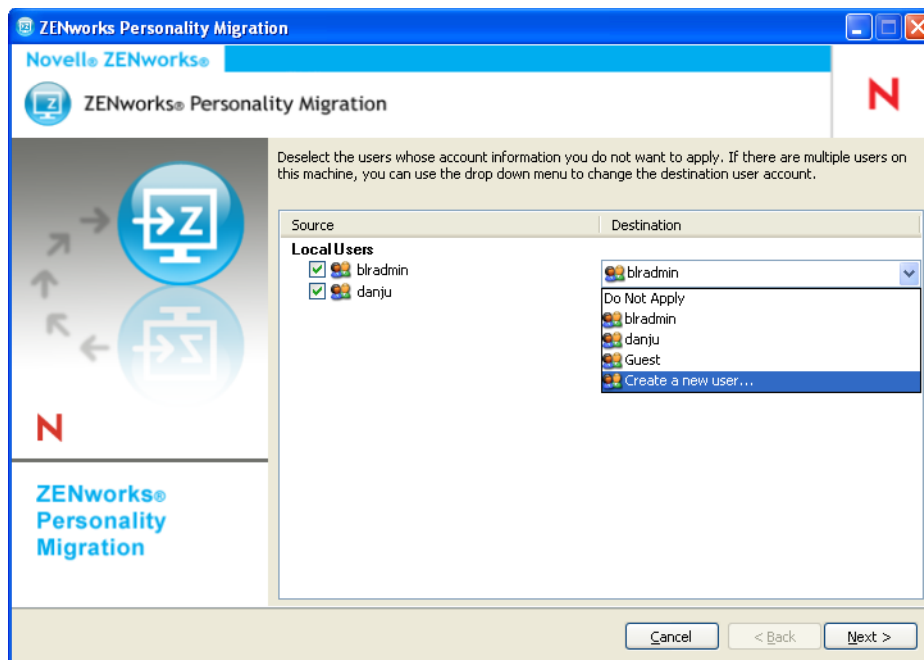


- 3 Click *Apply* to apply the saved settings and data on the device.
- 4 Click *Next*, then select the mode to transfer the user's personality settings and data:



- ♦ **Direct:** Provides real-time migration of settings and data between systems in the same subnet. The utility identifies and lists all the machines in the network that are ready to migrate their personalities. Continue with [Step 5](#).
- ♦ **File:** Uses the migration settings and data stored in a PNP file. Click *Browse* to browse to and select the PNP file saved during the store operation. Skip to [Step 7](#).

- 5 Select the source system whose settings and data you want to apply.
- 6 Click *Next*, then to select one of the following transfer options:
 - ♦ **Typical:** Lets you migrate all the selected settings and data of the user's profile from the source system to the destination system. If the user's account does not exist on the destination system, it is newly created with a blank password, if the administrator is logged in to the destination system. If the administrator is not logged in to the destination system, the selected settings are migrated to profile of the user who has logged in to the destination system.
Skip to **Step 13**.
 - ♦ **Custom:** Lets you customize the personality settings and data before migrating to the destination system. You can choose to migrate the personality to different users or create new users on the destination system. Continue with **Step 7**.
- 7 Click *Next*.



The *Source* column lists the user account information that was stored in the PNP file.

The *Destination* column lists the user accounts available on the current device.

If the administrator is logged in to the destination device, and the source user does not exist on the destination device, the source user account is automatically created on the destination device with a blank password.

IMPORTANT: The source user account is not created on the destination device if the password complexity policy is enabled on the destination device.

If the administrator is not logged in to the destination device, the selected settings are migrated to the profile of the user who has logged in to the destination device.

You can also do any of the following in the *Destination* column:

- ♦ Select an existing user account to apply the personality settings to a different user.

For example, you can apply the personality settings of *bladmin* to the *Guest* user.

- ♦ Click *Create a new user* to create a new user account and apply the personalized settings to this newly created user. You are prompted to enter the username and the password for the new user.
- 8** Click *Next*. Deselect the system settings you do not want to migrate.
 - 9** Click *Next*. Deselect the application settings you do not want to migrate.
 - 10** (Optional) Double-click the application name in the *Destination* column and select a different application if you want to apply the personality settings across applications. For example, you can apply the FireFox* bookmarks and settings to Internet Explorer* or vice versa.
 - 11** Click *Next*. Deselect the files settings you do not want to migrate.
 - 12** (Optional) Double-click the filename in the Destination column to change the destination of the file.
 - 13** Click *Next* to migrate the selected settings to the destination device. This step might take some time, depending on the amount of data migrated.
 - 14** Review the results of the migration. Errors, if any, appear in red color.

Automatically Migrating Personality Settings

5

ZENworks® Personality Migration provides automated migration for large-scale personality migrations from a Windows managed device to another Windows managed device across an enterprise.

To automatically migrate the personality settings, perform the following tasks in the order listed:

- ♦ [Section 5.1, “Creating a Personality Template,” on page 27](#)
- ♦ [Section 5.2, “Modifying an Existing Template,” on page 37](#)
- ♦ [Section 5.3, “Automatically Migrating Personality Settings,” on page 37](#)
- ♦ [Section 5.4, “Migrating Personality Settings by Using the Command Prompt,” on page 38](#)
- ♦ [Section 5.5, “Command Prompt Options to Store and Apply Personalities,” on page 38](#)

5.1 Creating a Personality Template

Personality Migration uses a template to perform automated migrations by using the directive bundles. This provides an efficient migration method without stepping through the ZENworks Personality Migration user interface each time you want to perform a migration on a specific machine. Ensure that you use the same template for the store and apply process.

A template defines policies that describe to the ZENworks Personality Migration engine the migration rules for the following settings categories:

- ♦ Users
- ♦ System Settings
- ♦ Application Settings
- ♦ Files and Folders

The template communicates which items are to be saved from the source Windows machine into the PNP file, and which items are to be applied to the destination machine.

A template is an XML files that can be read and edited with any editor. However, using the Template Builder for ZENworks Personality Migration is a convenient way to build custom templates for migrations, so you can have standardized and consistent migration across an organization. You can create templates using the Template Builder.

5.1.1 Starting the Template Builder

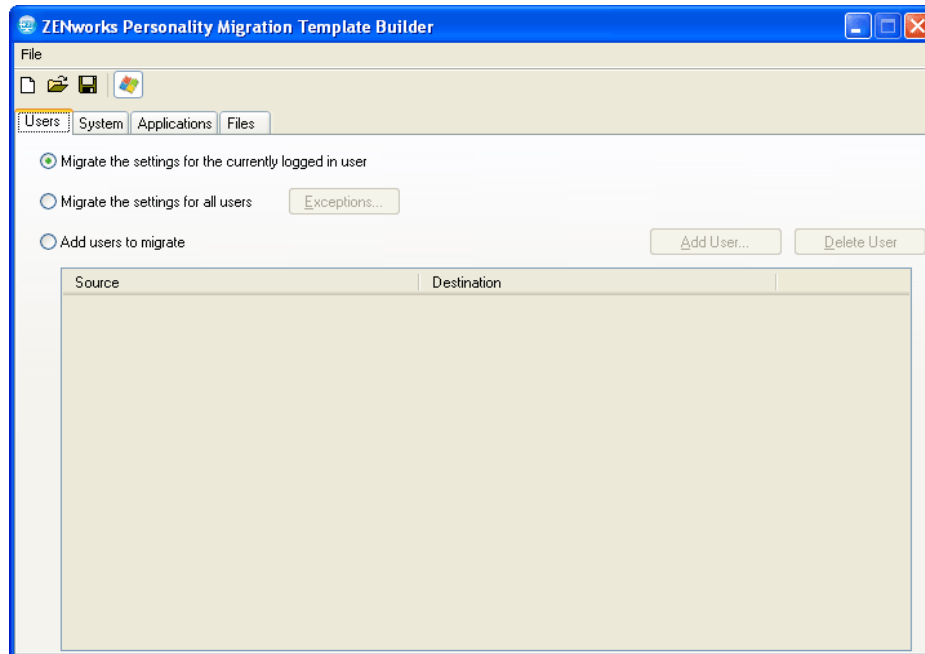
- 1 On a supported Windows device, click *Start > All Programs > Novell ZENworks > ZENworks Personality Migration Template Builder*.

5.1.2 Using the Template Builder to Create a Template

The Template Builder consists of four tabs in addition to standard *File* options such as *New*, *Open*, and *Save*.

- 1 Open the Template Builder to display the default *Users* tab.

The *Users* tab options control template information for the user migration.



- 2 Select one of the options described in the following table, depending on whether you want to migrate one user, all users, or a selected list of users.

Option	Description
<i>Migrate the settings for the currently logged in user</i>	Migrates the settings for the currently logged in user to another logged in user.
<i>Migrate the settings for all users</i>	Migrates all the settings selected in the template for all the user profiles in the system. Click <i>Exceptions</i> to list users you want to exclude from migration. Add User: Lets you select all the local users, the domain users, or a specific user to be excluded from migration. For example, if you do not want to migrate the administrator settings from any of the systems targeted for migration, click <i>Add User</i> , select <i>The following user</i> option, specify <i>administrator</i> , then click <i>OK</i> . Delete User: Lets you remove the user from the list of users excluded from migration.

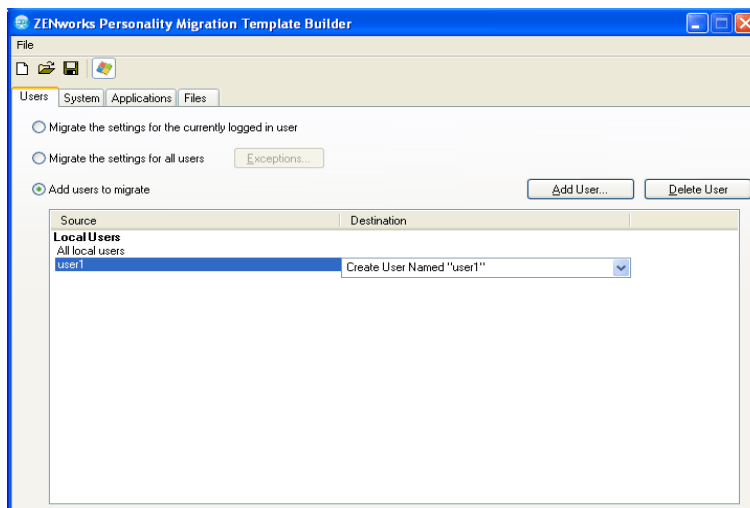
Option	Description
--------	-------------

Add users to migrate This option allows you to explicitly list the profiles to migrate.

Add User: Lets you select all the local users, the domain users, or a specific user to be migrated.

You can also map a username on the source machine to a different username on the destination machine:

1. Click *Add User*.
2. Click *The following user* option and specify the username. Ensure that the username is a valid account on the host machine, such as user1.
3. Click *OK* to display the username in the *Source* column.



4. From the drop-down list, click the destination of the newly added user displayed as *Create User Named "username" by default*. For example, *Create User Named "user1"*. The user's account is created with a blank password on the destination device.

IMPORTANT: The source user account is not created on the destination device if the Password Complexity policy is enabled on the destination device.

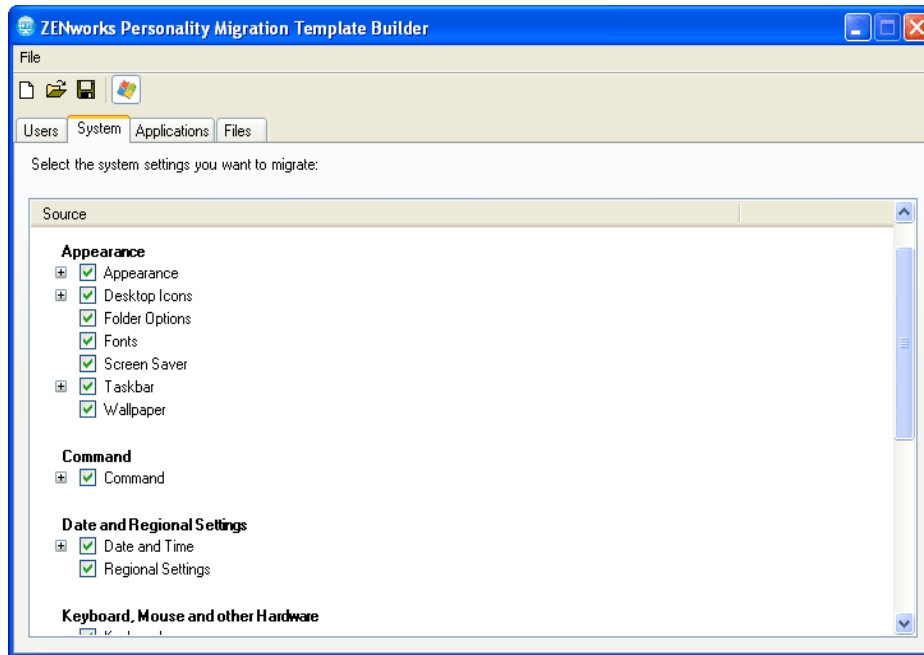
or

Select the *Create New User* option, and specify the username and the password to be created on the destination machine to which you want to migrate the personality settings.

5. Click *OK*.

Delete User: Lets you remove the user from the list of users to be migrated.

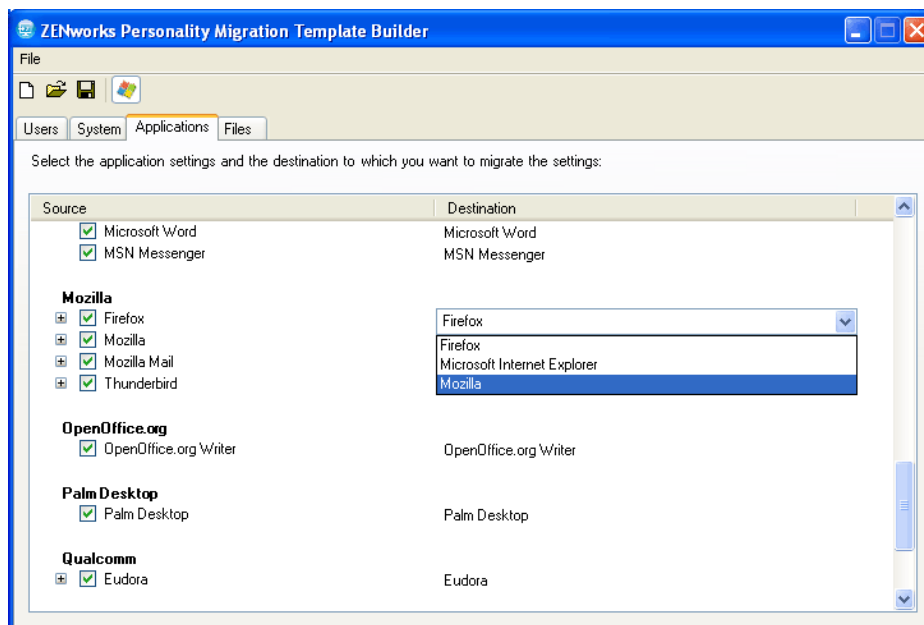
- 3 Click the *System* tab, then deselect any settings you do not want to migrate.



The *System* tab controls the system settings to be migrated for each of the user accounts selected in the *Users* tab. By default, all the settings are selected.

To deselect all the options, right-click the *Source* panel and select the *Uncheck All* option. To select all the options in the *Source* panel, right-click and select the *Check All* option.

- 4 Click the *Applications* tab to display the list of all the applications you can migrate.



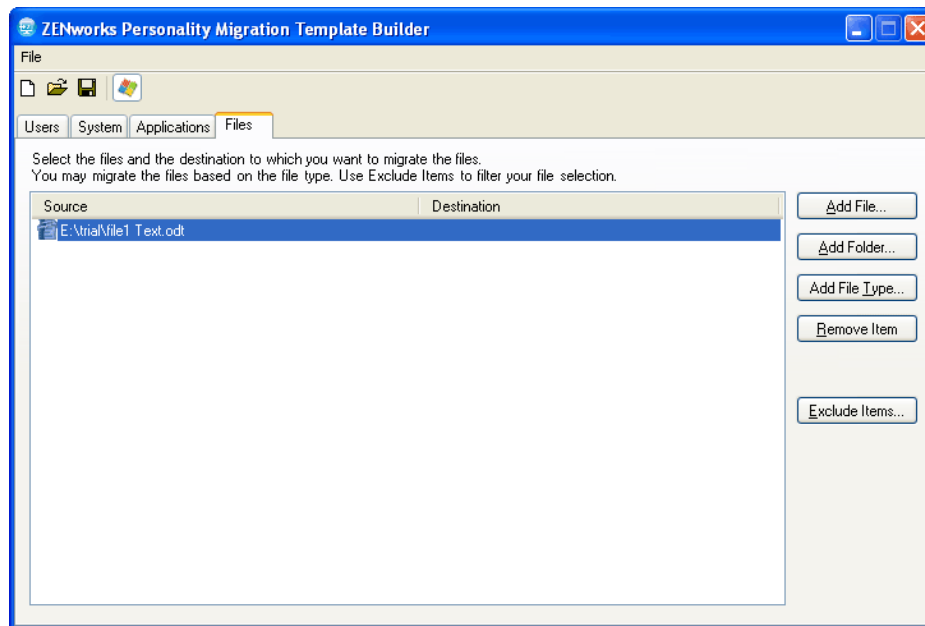
To deselect all the options, right-click the *Source* panel and select the *Uncheck All* option. To select all the options, right-click the *Source* panel and select the *Check All* option.

5 Select an appropriate destination application from the drop-down list in the *Destination* column. ZENworks Personality Migration supports the migration of the application settings between:

- ♦ **Same applications of same version:** Migrates settings between applications of the same version, such as from Microsoft Office 2003 to Microsoft Office 2003.
- ♦ **Same applications of different versions:** Migrates settings from the source application to a destination application of higher version, such as from Microsoft Office 2003 to Microsoft Office 2007.
- ♦ **Cross Applications:** Migrates settings from the source application to a destination application of similar type, such as from Internet Explorer to Firefox.

Before migration, ensure that the destination application is installed on the destination machine. An application setting selected for migration is ignored if it is not available on the source machine or the destination machine.

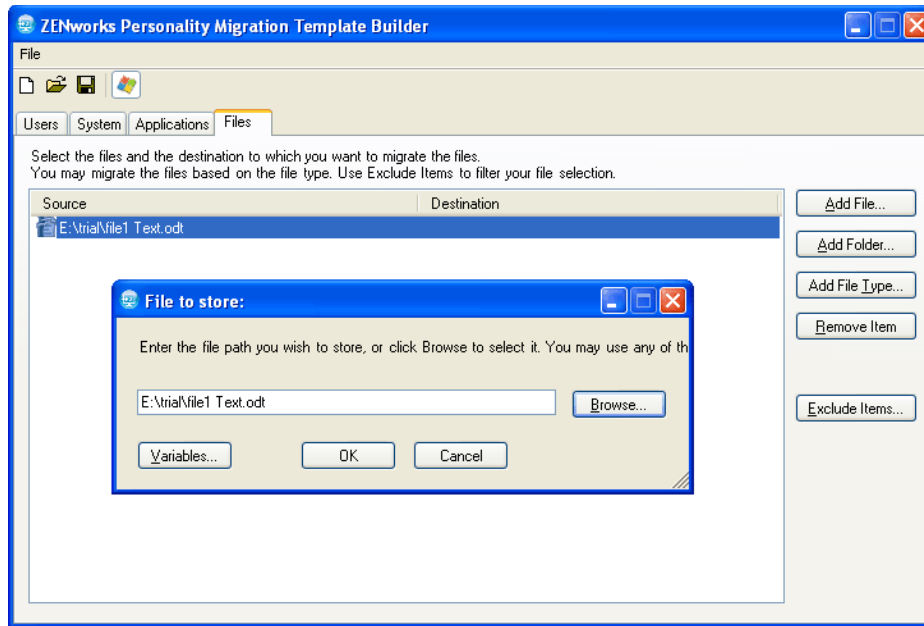
6 Click the *Files* tab to display settings for migrating data.



The *Files* tab allows you to set the rules for the migration of data.

IMPORTANT: Do not select to migrate the entire temp folder to the destination. Select only those files that you want to migrate. This is because the migration process utilizes the temp folder, and selecting the entire folder for migration displays error messages.

7 Click *Add File* to add a file to migrate.



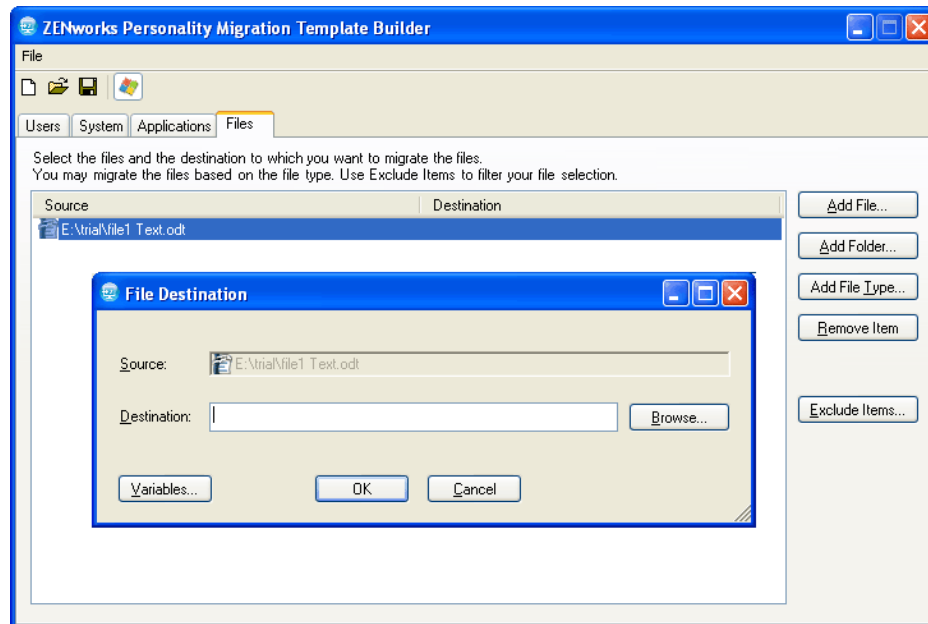
7a Click *Browse* to browse to and select the file you want to add for migration.

or

Click *Variables* to select a variable that maps to the location of the file you want to migrate. For example, if you want to migrate a desktop file named `test.txt`, click the *desktop* variable and append `/test.txt` to it.

7b Click *OK* to list the file in the *Source* column.

7c Double-click the filename in the *Source* column to open the File Destination dialog box.



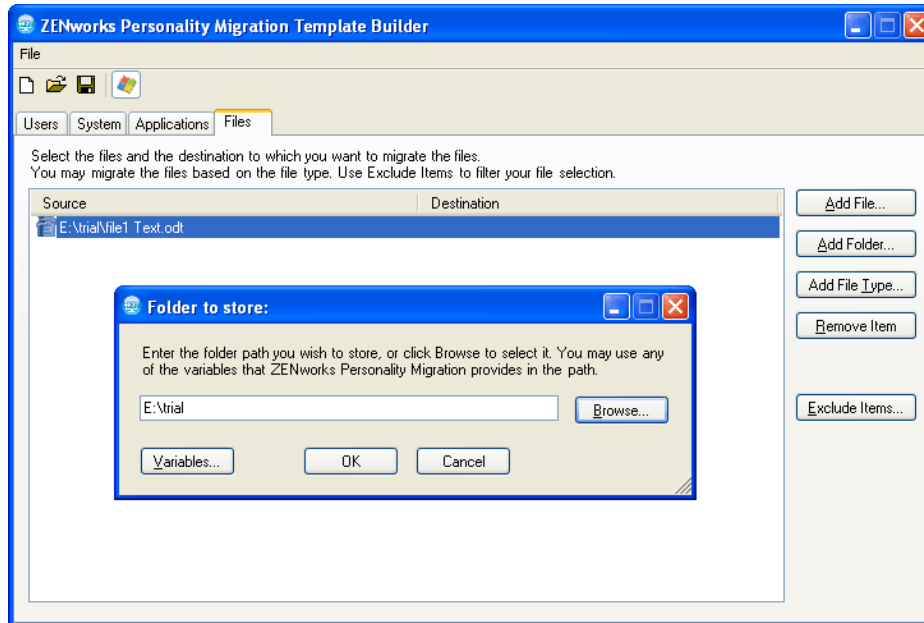
7d Click *Browse* to browse to and select the destination location for the file migration

or

Click *Variables* to select a variable that maps to the destination location. For example, if you want to migrate the file named file1 to the *favorites* directory, click the *favorites* variable and append \file1 to it.

7e Click *OK*.

8 Click *Add Folder* to add a folder to migrate.



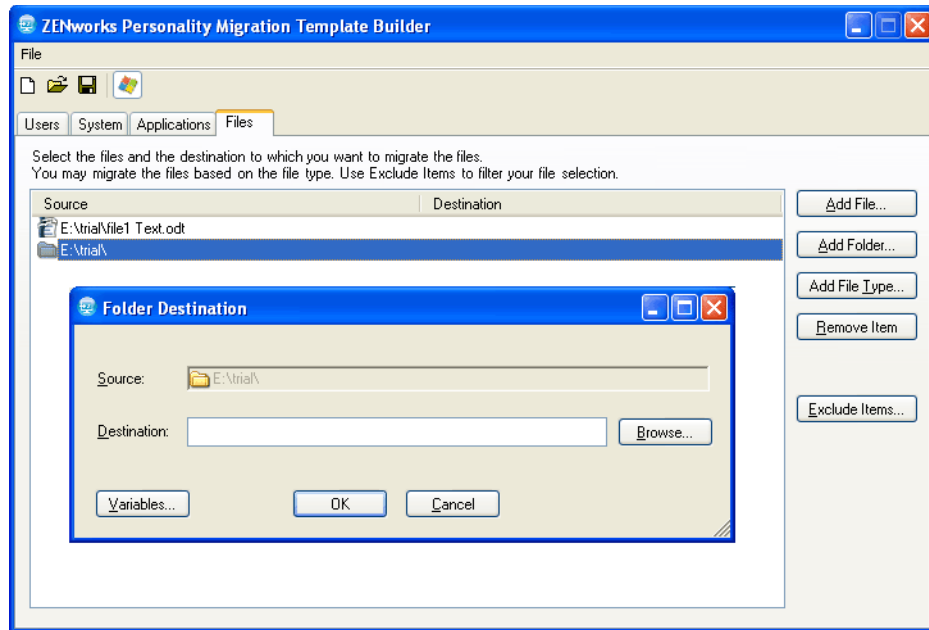
8a Click *Browse* to browse to and select the folder you want to add for migration.

or

Click *Variables* to select a variable that maps to the location of the folder you want to migrate. For example, if you want to migrate a desktop folder *testfolder1*, click the *%desktop%* variable and append */testfolder1* to it.

8b Click *OK* to list the folder in the *Source* column.

8c Double-click the folder name in the *Source* column to open the Folder Destination dialog box.



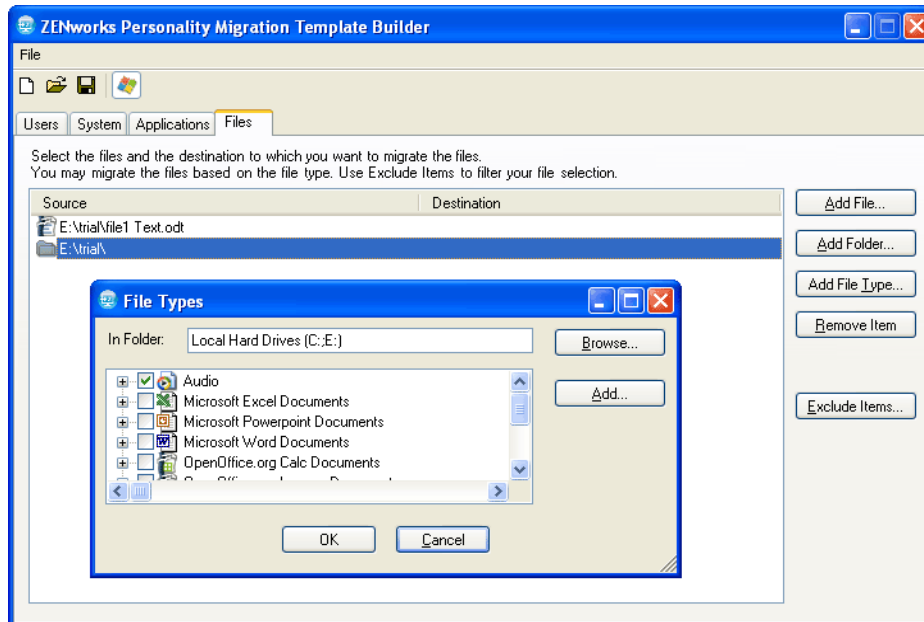
8d Click *Browse* to browse to and select the destination location to migrate the folder.

or

Click *Variables* to select a variable that maps to the destination location. For example, if you want to migrate the folder named folder1 to the `programfiles` directory, then click the `programfiles` variable and append the `/folder1` name to it

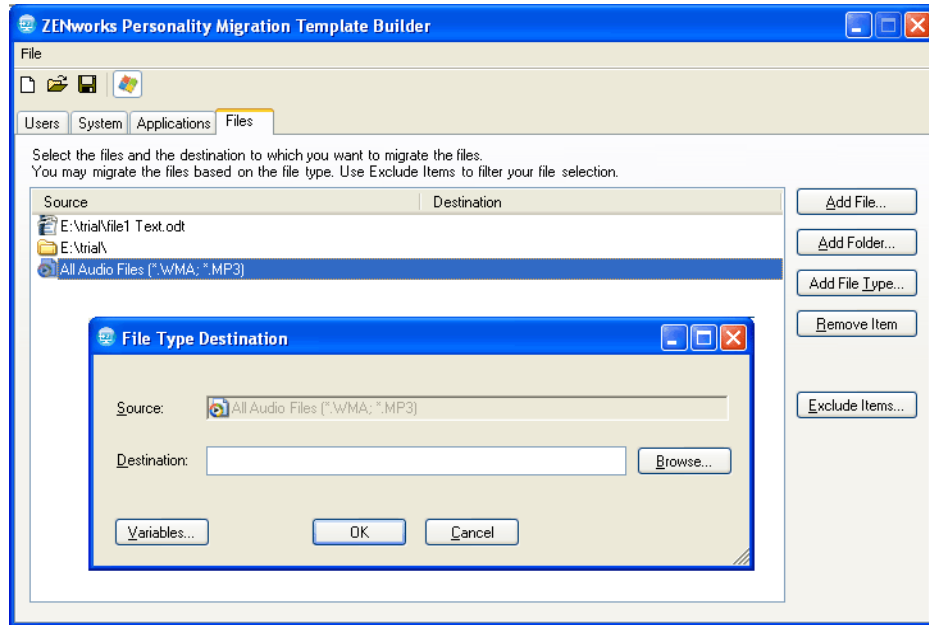
8e Click *OK*.

9 Click *Add File Type* to add the types of files you want to migrate.

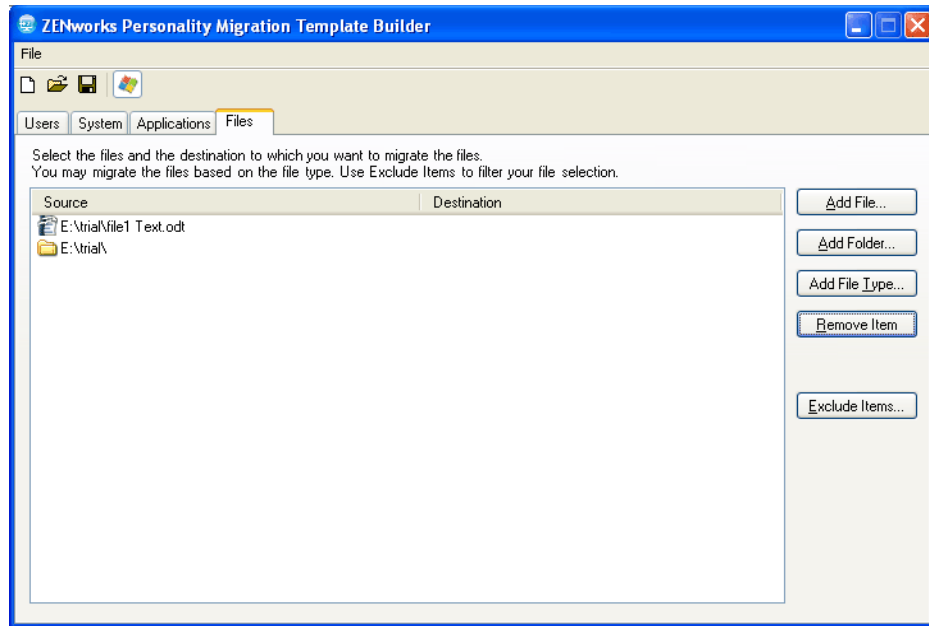


9a In the *In Folder* field, type the name or click *Browse* to browse to and select the folder. By default, all the local hard drives are displayed in this field.

- 9b** (Optional) If you need to add a file type, click *Add*, then specify the file type, such as .INI.
- 9c** Select the file types you want to migrate, then click *OK* to list the file types in the *Source* column.
- 9d** Double-click the file type in the *Source* column to open the File Type Destination dialog box.



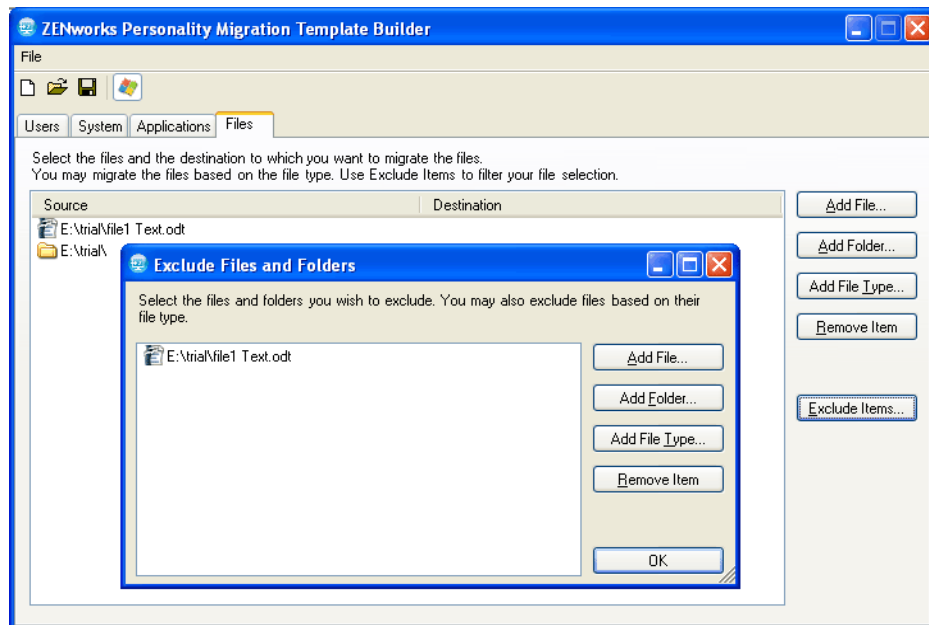
- 9e** Click *Browse* to browse to and select the destination location for the files.
or
Click *Variables* to select a variable that maps to the destination location.
- 9f** Click *OK*.
- 10** (Optional) Remove any files or folders that you do not want to migrate.
- 10a** In the *Source* column, highlight the item that you do not want to migrate.



10b Click *Remove Item*.

11 (Optional) Exclude any files and folders you do not want to migrate.

11a Click *Exclude Items* to display the Exclude Files and Folders dialog box.



11b Select the options you want to use to exclude items:

- ♦ **Add Files:** Click *Add File*, then select the files to be excluded from the migration.
- ♦ **Add Folder:** Click *Add Folder*, then select the folders to be excluded from the migration.
- ♦ **Add File Type:** Click *Add File Type*, then select the types of files to be excluded from the migration.

- ♦ **Remove Item:** Click *Remove Item* to remove the item from the exclusion list and include it in the migration.

11c Click *OK*.

12 Click *File > Save* to save the template as a .xml file.

5.2 Modifying an Existing Template

The ZENworks Personality Migration Template Builder also allows you to modify existing templates.

- 1 Click *File > Open*, then open the template you want to modify.
- 2 Make the required changes.
- 3 Save the template.

5.3 Automatically Migrating Personality Settings

Use directive bundles for enterprise-scale migrations of personality settings from a Windows device to another Windows device.

When you create bundles by using the Store Personality or Apply Personality actions, the bundles always run as a dynamic administrator. For more information, see “[Action - Launch Windows Executable](#)” in the *ZENworks 10 Configuration Management Software Distribution Reference*.

NOTE: You must not launch multiple personality migration bundles at the same time on the same device. If you do so, the bundles are not launched correctly. The log of the bundle that was first launched is the only log stored in the `personalitylog.xml` file. Also, the dynamic administrator user profiles for the bundles are not deleted. You must manually delete them.

- 1 Create a Store Personality action.

For more information, see “[Creating Directive Bundles](#)” in the *ZENworks 10 Configuration Management Software Distribution Reference*.

- 2 Assign this bundle to a user or a device, whose user’s personality needs to be migrated.

For more information on assigning the bundle, see “[Assigning Existing Bundles to Users](#)” in the *ZENworks 10 Configuration Management Software Distribution Reference*.

- 3 Create an Apply Personality action.

For more information, see “[Creating Directive Bundles](#)” in the *ZENworks 10 Configuration Management Software Distribution Reference*.

- 4 Assign this bundle to the user to whom you want to apply the personality.

For more information on assigning the bundle, see “[Assigning Existing Bundles to Users](#)” in the *ZENworks 10 Configuration Management Software Distribution Reference*.

The personality settings are applied to the user on the destination system when the Apply Personality action is launched.

IMPORTANT: After applying the personalities, reboot the devices for the personalities to take effect. In order to ensure this, add the Reboot/Shutdown action to the bundle. For more information, see “[Creating Directive Bundles](#)” in the *ZENworks 10 Configuration Management Software Distribution Reference*.

5.4 Migrating Personality Settings by Using the Command Prompt

1 Open a command prompt in Windows by clicking *Start > All Programs > Accessories > Command Prompt*.

2 Change to the ZENworks Personality Migration installation directory.

3 On the source device, store the personality by using the following command:

```
PersonalityMigrationCore.exe --store --template=value --file=value
```

You can also use the password, span-size, no-span, and log options. However, these are optional.

For example,

```
PersonalityMigrationCore.exe --store --template=C:\template.xml --  
file=C:\users.pnp --log=C:\users.log
```

For more information on options, see [Section 5.5, “Command Prompt Options to Store and Apply Personalities,”](#) on page 38.

4 On the destination device, apply the personality by using the following command:

```
PersonalityMigrationCore.exe --apply --template=value --file=value
```

You can also use the password and log options. However, these are optional.

For example,

```
PersonalityMigrationcore.exe --apply --template=C:\template.xml --  
file=C:\users.pnp --log=C:\users.log
```

For more information on options, see [Section 5.5, “Command Prompt Options to Store and Apply Personalities,”](#) on page 38.

5.5 Command Prompt Options to Store and Apply Personalities

Table 5-1 *Command Prompt Options*

Option	Description/Value
file	The complete path and the name of the PNP file
template	The complete path and the name of the template
span-size	The number of bytes for spanned files
no-span	Migrates personalities without span
password	The password to access the PNP file
with-options	The filename in which the command line parameters are stored when a command exceeds 256 characters
log	The complete path and name of the log file

Best Practices

A

The following sections explain the best practices to follow while using the Personality Migration utility:

- ♦ [Section A.1, “Storing and Applying Personalities,” on page 39](#)
- ♦ [Section A.2, “Setting the Length of the Computer Name,” on page 39](#)

A.1 Storing and Applying Personalities

After changing any system settings, ensure that you restart your device before storing the personality. Similarly, ensure that you restart your device before and after applying the personality. This is because certain system settings are applied only after restarting the device.

A.2 Setting the Length of the Computer Name

The name of the computer on which you are storing the personality must be less than or equal to 15 characters. This is because the maximum number of characters that you can specify for a computer name is set to 15 in NetBIOS.

Troubleshooting Personality Migration

B

This section provides solutions to problems you might encounter while working with Personality Migration:

- ♦ “The network connection is lost while using Direct mode to migrate network settings from the source device to the destination device when both the devices are in the same subnet” on page 41
- ♦ “How do I enable debug logging for settings migration in Personality Migration?” on page 41
- ♦ “Where do I find the Personality Migration log files?” on page 41
- ♦ “The Personality Migration application hangs” on page 42
- ♦ “Migration of the archive.pst file from a customized location in Microsoft Outlook fails” on page 42

The network connection is lost while using Direct mode to migrate network settings from the source device to the destination device when both the devices are in the same subnet

Source: ZENworks 10 Configuration Management; Personality Migration.

Explanation: Do not migrate the network settings from the source machine to the destination machine in Direct mode. This is because the destination machine obtains the same network settings as the source machine, so it disconnects from the source and stops the migration process.

Action: Use File mode to migrate network settings.

Action: If you are required to use Direct mode to perform the migration, deselect the *Network Settings* option.

How do I enable debug logging for settings migration in Personality Migration?

Source: ZENworks 10 Configuration Management; Personality Migration.

Action: In the `ZENworksPersonalityMigration_Installation_Path\App.config` file, set the value of the `Enable_Debug` parameter to `True`. The default value is `False`.

Where do I find the Personality Migration log files?

Source: ZENworks 10 Configuration Management; Personality Migration.

Action: If Personality Migration is executed as a standalone application, you can find the `PersonalityMigration*.xml` log file in the following location:

```
%appdata%\Novell\PersonalityMigration\PersonalityMigration\10.2.0.0
```

If Personality Migration is executed by using the Store/Apply Bundle through ZENworks Configuration Management, you can find the `PersonalityLog.xml` file in the `ZENworks_Configuration_Management_Installation_Path\Novell\Zenworks\Logs\PersonalityMigration` directory on your device.

The Personality Migration application hangs

Source: ZENworks 10 Configuration Management; Personality Migration.

Explanation: If you try to uninstall Personality Migration when the application is still open, the application hangs. A dialog box appears that allows you to either *Exit*, *Cancel*, *Ignore*, or *Retry* the uninstallation process.

Possible Cause: You clicked *Ignore*.

Action: Before uninstalling Personality Migration, ensure that the Personality Migration application is closed.

For more information on how to uninstall Personality Migration, see [Chapter 3, “Uninstalling Personality Migration,” on page 15](#).

Migration of the archive.pst file from a customized location in Microsoft Outlook fails

Source: ZENworks 10 Configuration Management; Personality Migration.

Possible Cause: You stored or applied the Microsoft Outlook settings from a non-administrator's account.

Action: Store and apply the Microsoft Outlook settings from an administrator's account.

Migration Settings

C

If you have installed Personality Migration as a standalone application, the following settings can be migrated only by an administrator:

Table C-1 *Settings for Administrators to Migrate*

Type	Settings
System Settings	Fonts FontInstall FontDPI SystemFonts Mouse pointer DefaultConnectionName (Internet Explorer, Connections) ResetTimeServer ResetFileServer SoundFilesLocation (Sound files for default settings) TimeZone AutoAdjustForDSTIsSet AutoAdjustForDST SyncSettings (Auto time sync) NTPSync NTPServerAddress DefaultNTPServer UseSimpleFileSharing Trash (Recycle Bin option)
Microsoft Outlook Settings	Archive.pst file
Microsoft Windows Login Screen Settings	EnableFastSwitching WelcomeScreen LoginBackgroundColor WelcomeScreenPictures PasswordHints
Microsoft Publisher Application Settings	ResearchParentalControlPassword DisableNonFilteredResearchSites
Network Settings	NetworkCards DNS IPFilterSecurity HostsFile LMHostsFile
Power and Energy Settings	EnableHibernate GlobalPowerPolicy

Type	Settings
Files and Registries Settings	System files All user documents All mounted and unmounted registries

Supported Settings in Personality Migration



The following sections list the settings that you can migrate by using Personality Migration:

- [Section D.1, “System Settings,” on page 45](#)
- [Section D.2, “Application Settings,” on page 46](#)

D.1 System Settings

You can migrate the following system settings with ZENworks Personality Migration:

Table D-1 *System Settings*

Categories	Settings
Accessibility	♦ Accessibility
Appearance	♦ Appearance
	♦ Desktop Icons
	♦ Fonts
	♦ Folder Options
	♦ Login Screen
	♦ Screen Saver
	♦ Task Bar
	♦ Wallpaper
Date and Regional Settings	♦ Date and Time
	♦ Regional Settings
Keyboard, Mouse and Other Hardware	♦ Keyboard
	♦ Mouse
	♦ Power Options
Network	♦ Dialup
	♦ Mapped Drives
	♦ Networking
	♦ Sharepoints
Sounds and Multimedia	♦ Sounds

NOTE: While migrating system settings such as themes that are unavailable in the operating system on the destination device, then after migration, the default theme of the operating system on the destination device is applied.

D.2 Application Settings

Review the following sections to understand the application settings and versions that you can migrate by using ZENworks Personality Migration:

- ♦ [Section D.2.1, “Adobe Applications,” on page 46](#)
- ♦ [Section D.2.2, “Corel Applications,” on page 46](#)
- ♦ [Section D.2.3, “IBM Applications,” on page 47](#)
- ♦ [Section D.2.4, “Microsoft Applications,” on page 47](#)
- ♦ [Section D.2.5, “Palm Applications,” on page 49](#)
- ♦ [Section D.2.6, “Qualcomm Applications,” on page 49](#)
- ♦ [Section D.2.7, “Research in Motion Applications,” on page 49](#)
- ♦ [Section D.2.8, “Sun Applications,” on page 49](#)
- ♦ [Section D.2.9, “America Online Applications,” on page 50](#)
- ♦ [Section D.2.10, “GAIM Applications,” on page 51](#)
- ♦ [Section D.2.11, “Mozilla Foundation Applications,” on page 51](#)
- ♦ [Section D.2.12, “OpenOffice.org Applications,” on page 53](#)

D.2.1 Adobe Applications

You can migrate settings for the following applications with ZENworks Personality Migration:

- ♦ Acrobat* 7.0 / 8.0
- ♦ Reader* 6.0 / 7.0 / 8.0
- ♦ Illustrator* 9.0 / 10.0 / 11.0 / 12.0
- ♦ ImageReady* 7.0.1 / 8.0 / 9.0
- ♦ InDesign* 2.0 / 3.0 / 4.0
- ♦ PageMaker* 7.0
- ♦ Photoshop* 7.0 / 8.0 / 9.0
- ♦ Dreamweaver* 8.0 / MX / MX 2004
- ♦ Fireworks* 8.0 / MX
- ♦ Flash* 8.0 / MX
- ♦ Freehand* 10.0 / MX

D.2.2 Corel Applications

You can migrate settings for the following applications with ZENworks Personality Migration:

- ♦ Paint Shop Pro* 10.0

D.2.3 IBM Applications

You can migrate settings for the following applications with ZENworks Personality Migration:

- ♦ Lotus Notes* 6.5

D.2.4 Microsoft Applications

You can migrate settings for the following applications with ZENworks Personality Migration:

- ♦ Access* 2000 / 2002 / 2003 / 2007
- ♦ Excel* 2000 / 2002 / 2003 / 2007
- ♦ FrontPage* 2000 / 2002 / 2003 / 2007
- ♦ PowerPoint* 2000 / 2002 / 2003 / 2007
- ♦ Word 2000 / 2002 / 2003 / 2007

You can migrate the following settings for Word:

- ♦ Custom Dictionaries
 - ♦ Spelling and Grammar Checking Options
 - ♦ Autocorrect Entries and Options
 - ♦ Change Tracking Options
 - ♦ Document Display Options
 - ♦ Print Options
 - ♦ Default Template
 - ♦ Toolbars
 - ♦ Assistant Options
- ♦ Internet Explorer 5.0 / 5.5 / 6.0 / 7.0

You can migrate the following settings for Internet Explorer:

- ♦ Homepage
 - ♦ Favorites
 - ♦ Cookies (store only)
 - ♦ Cookie Permissions
 - ♦ Custom Fonts and Colors
 - ♦ Pop-up Permissions
 - ♦ Proxy Settings
 - ♦ Language Settings
 - ♦ Security Settings
 - ♦ Advanced Settings
- ♦ MSN Messenger 7.0 / 7.5 / 8.0
 - ♦ Office Shortcut Bar 2000 / 2002
 - ♦ Outlook* 2000 / 2002 / XP / 2003

You can migrate the following settings for Outlook:

Settings	Options
Email	<ul style="list-style-type: none"> ◆ Account Details: Mail server name and login names ◆ Account Passwords (Store only) ◆ E-Mail messages and Directory structure ◆ E-Mail marked as Read or Unread ◆ Security Options: Connect via SSL, secure authentication ◆ Signatures ◆ Composition preferences (HTML, rich text, or plain text) ◆ Account settings such as Leave on Server and Server timeout ◆ Incoming mail rules (Outlook to Outlook only) ◆ Frequency of sending/receiving messages (Outlook to Outlook only)
Calendar	<ul style="list-style-type: none"> ◆ Calendar Entries ◆ Reminder Time and Options ◆ Appointment Recurrence Options ◆ Work Day and Week Settings
Contact	<ul style="list-style-type: none"> ◆ Contact Entries ◆ Distribution List Entries ◆ Default Contact Display Name ◆ Default Contact Sort Order
Task	<ul style="list-style-type: none"> ◆ Task Entries ◆ Reminder Time Options ◆ Task Recurrence Options

NOTE: To migrate the Microsoft Outlook `archive.pst` file from a customized location, store and apply the Microsoft Outlook settings from an administrator's account.

◆ Outlook Express 5.0 / 6.0

You can migrate the following settings for Outlook Express:

Settings	Options
Email	<ul style="list-style-type: none"> ◆ Account Details: Mail server name and login names ◆ Account Password (Store only) ◆ E-Mail messages ◆ E-Mail marked as Read or Unread ◆ Security Options: Connect via SSL, secure authentication ◆ Signatures ◆ Composition preferences (HTML, rich text, or plain text) ◆ Account settings such as Leave on Server and Server timeout ◆ Email Directory Structure

Settings	Options
Contact	<ul style="list-style-type: none"> ♦ Contact Entries ♦ Distribution List Entries

- ♦ Project 2000 / 2003 / 2007
- ♦ Publisher 2002 / 2003 / 2007
- ♦ NetMeeting* 3.0
- ♦ Visio* 2000 / 2002 / 2003 / 2007
- ♦ Windows Media* Player 9.0 / 10.0
- ♦ Windows Media Player Audio 8.0
- ♦ Windows Media Player Video
- ♦ Mail*
- ♦ Infopath*

D.2.5 Palm Applications

You can migrate settings for the following applications with ZENworks Personality Migration:

- ♦ Palm Desktop 4.0 / 4.1

D.2.6 Qualcomm Applications

You can migrate settings for the following applications with ZENworks Personality Migration:

- ♦ Eudora* 6.2

D.2.7 Research in Motion Applications

You can migrate the following applications with ZENworks Personality Migration:

- ♦ BlackBerry* Desktop 4.0 / 4.1

D.2.8 Sun Applications

You can migrate the following applications with ZENworks Personality Migration:

- ♦ StarOffice Writer*

D.2.9 America Online Applications

You can migrate the following applications with ZENworks Personality Migration:

- ♦ AOL Instant Messenger*

You can migrate the following settings for AOL Instant Messenger:

Application	Settings
AOL Instant Messenger	<ol style="list-style-type: none">1. Account Information<ul style="list-style-type: none">♦ Screen Names♦ Password Preferences♦ Autologin Preferences♦ Connection and Proxy Settings2. Account Settings<ul style="list-style-type: none">♦ Buddy List Preferences♦ Privacy Options♦ Sign in Options♦ Notification Options♦ Notification Sound Files♦ IM/Chat Preferences♦ Font and Window Color Options♦ Away/Idle Messages and Options♦ Stock Ticker Information

D.2.10 GAIM Applications

You can migrate the following applications with ZENworks Personality Migration:

- ♦ GAIM

You can migrate the following settings for GAIM:

Application	Settings
GAIM	<ol style="list-style-type: none">1. Account Information<ul style="list-style-type: none">♦ Screen Names♦ Password Preferences♦ Autologin Preferences♦ Connection and Proxy Settings♦ Protocol and Server Settings2. Account Settings<ul style="list-style-type: none">♦ Buddy List Preferences♦ Notification Options♦ Notification Sound Files♦ IM/Chat Preferences♦ Away/Idle Messages and Options♦ Message Format Options

D.2.11 Mozilla Foundation Applications

You can migrate the following applications with ZENworks Personality Migration:

- ♦ Firefox

You can migrate the following settings for Firefox:

- ♦ Homepage
 - ♦ Bookmarks
 - ♦ Cookies
 - ♦ Cookie Permissions
 - ♦ Custom Fonts and Colors
 - ♦ Pop-up Permissions
 - ♦ Proxy and Connection Settings
 - ♦ Language Settings
 - ♦ Download Manager Options
 - ♦ Advanced Settings
- ♦ Mozilla

You can migrate the following settings for Mozilla:

- ♦ Homepage

- ♦ Bookmarks
- ♦ Cookies
- ♦ Cookie Permissions
- ♦ Custom Fonts and Colors
- ♦ Pop-up Permissions
- ♦ Proxy Settings
- ♦ Language Settings
- ♦ Download Manager Options
- ♦ Advanced Settings
- ♦ Mail

You can migrate the following settings for Mail:

Settings	Options
Email	<ul style="list-style-type: none"> ♦ Account Details: Mail server name and login names ♦ Account Passwords ♦ E-Mail messages and Directory Structures ♦ E-Mail marked as Read or Unread ♦ Security Options: Connect via SSL, secure authentication ♦ Signatures ♦ Composition preferences (HTML or Plain text) ♦ Account settings such as Leave on Server and Server timeout ♦ Incoming Mail Rules (from Mozilla/Thunderbird* only)
Contact	<ul style="list-style-type: none"> ♦ Contact Entries

- ♦ Thunderbird

You can migrate the following settings for Thunderbird:

Settings	Options
Email	<ul style="list-style-type: none">♦ Account Details: Mail server name and login names♦ Account Passwords♦ E-Mail messages and Directory Structures♦ E-Mail marked as Read or Unread♦ Security Options: Connect via SSL, secure authentication♦ Signatures♦ Composition preferences (HTML or Plain text)♦ Account settings such as Leave on Server, and Server timeout

D.2.12 OpenOffice.org Applications

You can migrate the following applications with ZENworks Personality Migration:

- ♦ OpenOffice.org Writer

You can migrate the following settings for OpenOffice.org Writer:

- ♦ Custom Dictionaries
- ♦ Spell Check Options
- ♦ Autocorrect Entries and Options
- ♦ Change Tracking Options
- ♦ Document Display Options
- ♦ Default Template
- ♦ Toolbars
- ♦ Filepaths

Cross-User Migration Scenarios

E

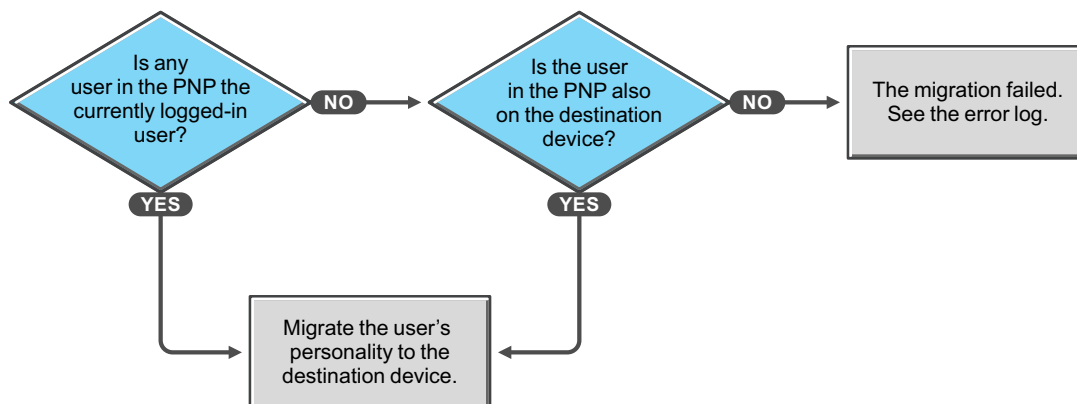
The flowcharts in this section describe the various scenarios you might encounter while migrating user personalities.

- ♦ Section E.1, “Migration Scenarios If the PNP file has the personalities of all users,” on page 55
- ♦ Section E.2, “Migration Scenarios If the PNP file has the personality of the currently logged-in user,” on page 56
- ♦ Section E.3, “Migration Scenarios If the PNP File has the Personality of a Specific User,” on page 58
- ♦ Section E.4, “Migration Scenarios If the PNP File has the Personalities of Multiple Specific Users,” on page 59

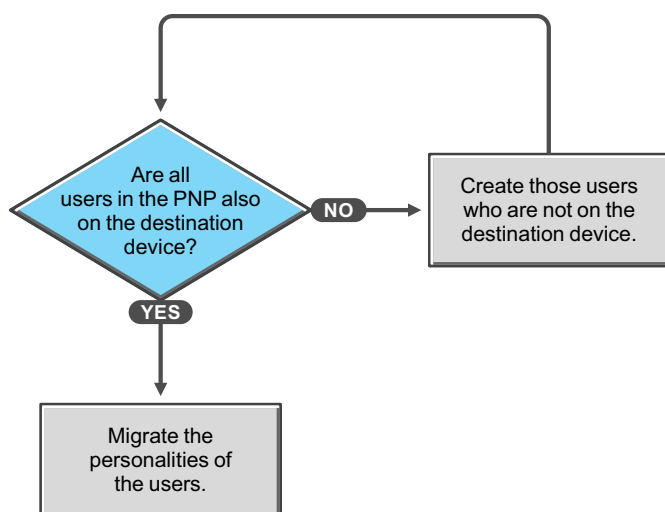
E.1 Migration Scenarios If the PNP file has the personalities of all users

- ♦ Scenario 1: Selecting the template option *Migrate the settings for the currently logged in user*
- ♦ Scenario 2: Selecting the template option *All users to migrate*
- ♦ Scenario 3: Selecting the template option *Add users to migrate*, and specify a user

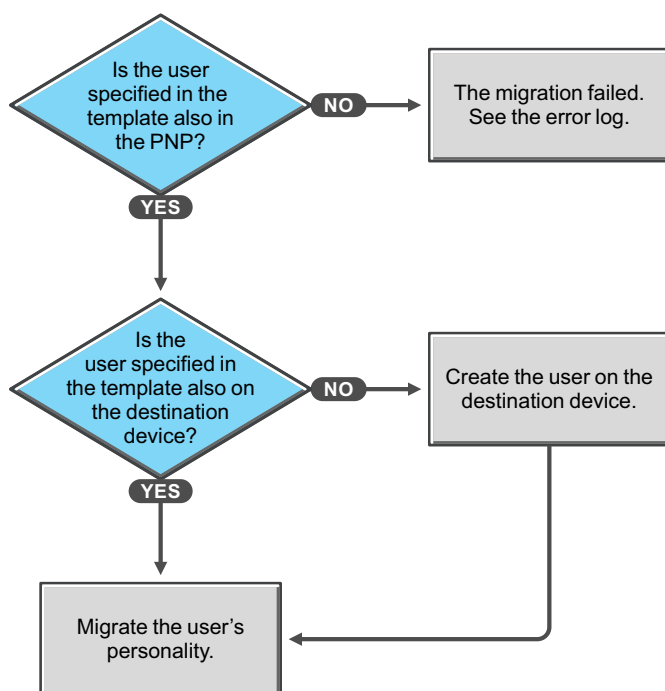
Scenario 1: Selecting the template option *Migrate the settings for the currently logged in user*



Scenario 2: Selecting the template option *All users to migrate*



Scenario 3: Selecting the template option *Add users to migrate*, and specify a user



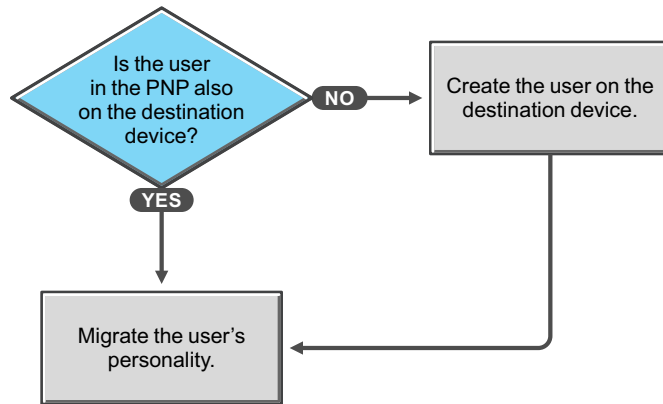
E.2 Migration Scenarios If the PNP file has the personality of the currently logged-in user

- ♦ Scenario 4: Selecting the template option *Migrate the settings for the currently logged in user*
- ♦ Scenario 5: Selecting the template option *All users to migrate*
- ♦ Scenario 6: Selecting the template option *Add users to migrate*, and you specify a user
- ♦ Scenario 6a: Selecting the template option *Add users to migrate*, and you specify multiple users

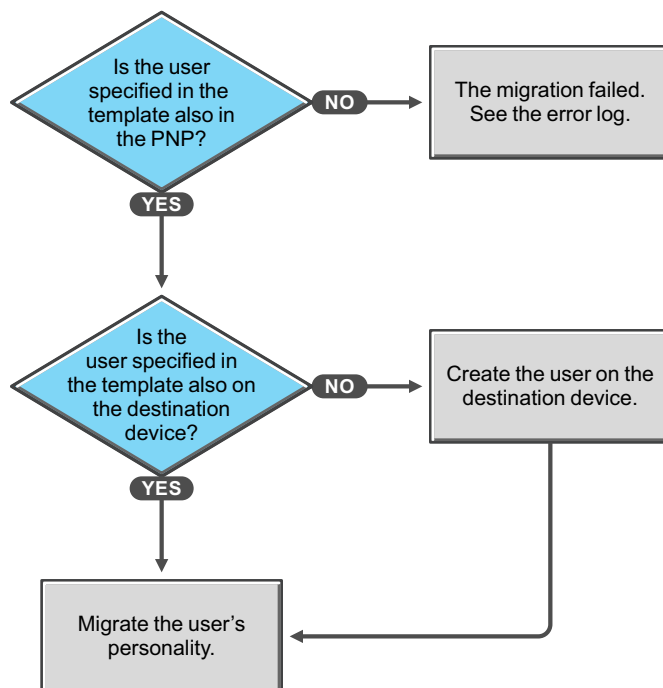
Scenario 4: Selecting the template option *Migrate the settings for the currently logged in user*

Migrate the user's personality without mapping the users by their names.

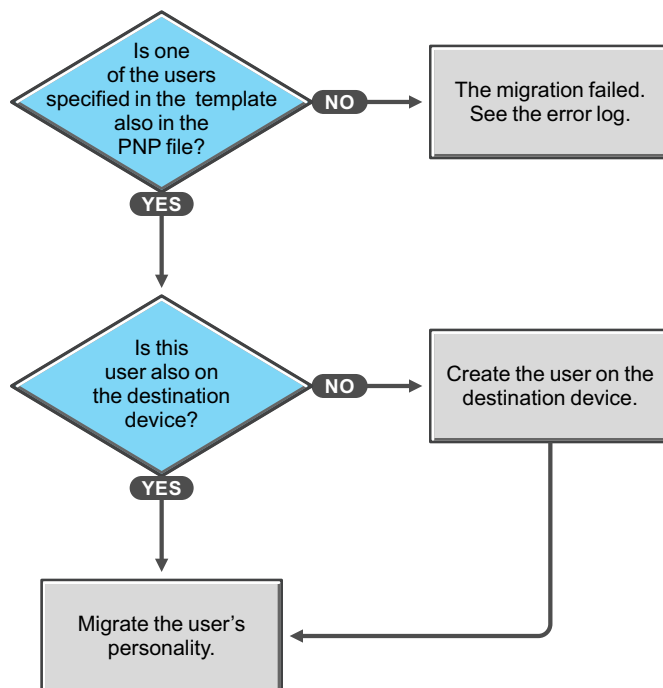
Scenario 5: Selecting the template option *All users to migrate*



Scenario 6: Selecting the template option *Add users to migrate*, and you specify a user



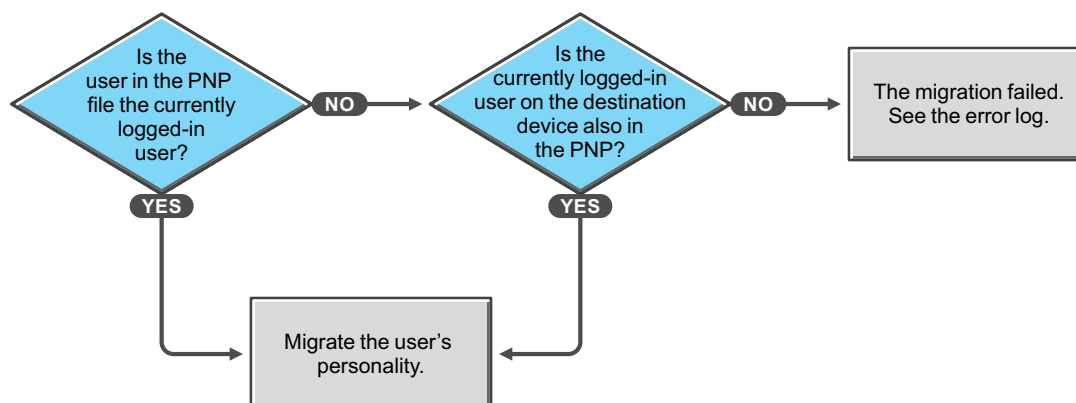
Scenario 6a: Selecting the template option *Add users to migrate*, and you specify multiple users



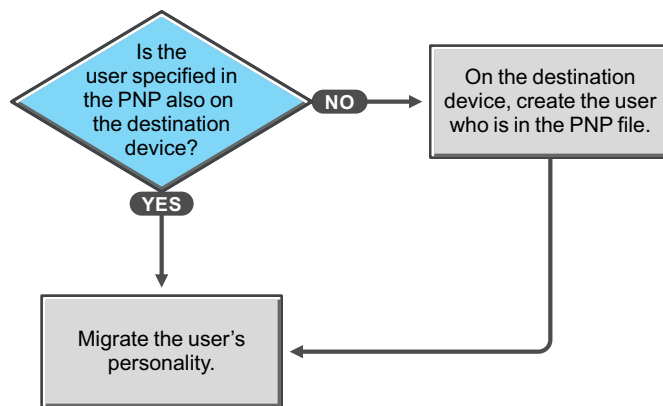
E.3 Migration Scenarios If the PNP File has the Personality of a Specific User

- Scenario 7: Selecting the template option *Migrate the settings for the currently logged in user*
- Scenario 8: Selecting the template option *All users to migrate*
- Scenario 9: Selecting the template option *Add users to migrate*, and you specify a user

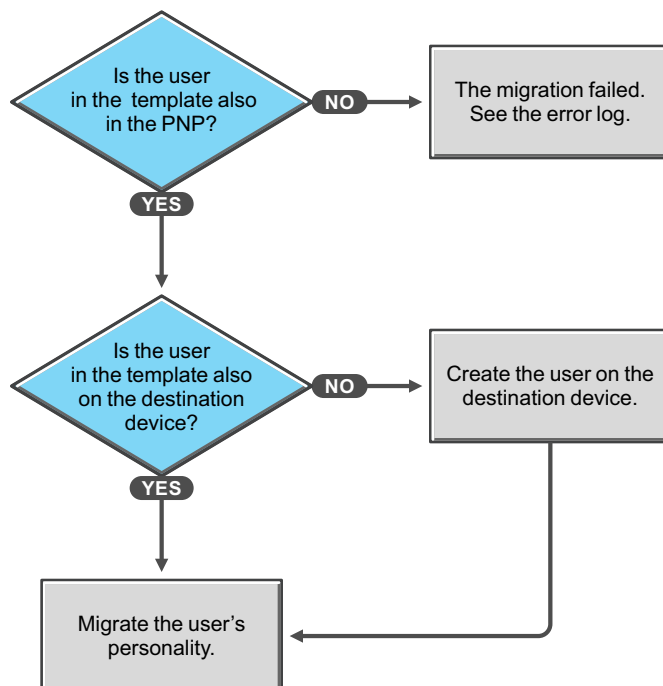
Scenario 7: Selecting the template option *Migrate the settings for the currently logged in user*



Scenario 8: Selecting the template option *All users to migrate*



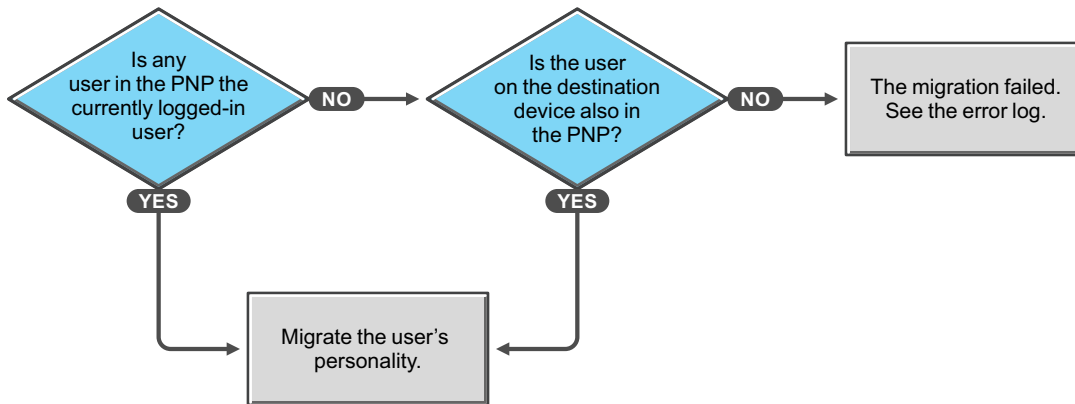
Scenario 9: Selecting the template option *Add users to migrate*, and you specify a user



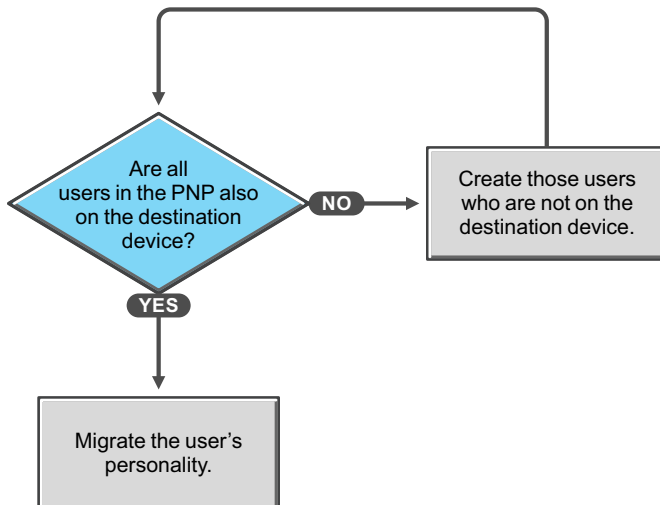
E.4 Migration Scenarios If the PNP File has the Personalities of Multiple Specific Users

- Scenario 10: Selecting the template option *Migrate the settings for the currently logged in user*
- Scenario 11: Selecting the template option *All users to migrate*
- Scenario 12: Selecting the template option *Add users to migrate*, and you specify multiple users

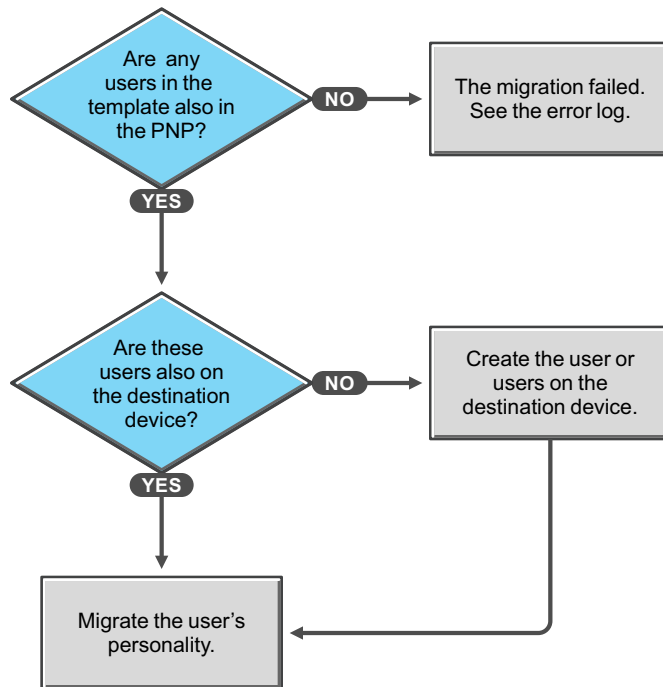
Scenario 10: Selecting the template option *Migrate the settings for the currently logged in user*



Scenario 11: Selecting the template option *All users to migrate*



Scenario 12: Selecting the template option *Add users to migrate*, and you specify multiple users



Documentation Updates

F

This section contains information on documentation content changes that were made in this *Personality Migration Reference* for Novell® ZENworks® 10 Configuration Management SP2. The changes are listed according to the date they were published.

The documentation for this product is provided on the Web in two formats: HTML and PDF. The HTML and PDF documentation are both kept up-to-date with the changes listed in this section.

If you need to know whether a copy of the PDF documentation that you are using is the most recent, the PDF document includes a publication date on the title page.

The documentation was updated on the following date:

- ♦ **Section F.1, “May 27, 2009: SP2 (10.2),” on page 63**

F.1 May 27, 2009: SP2 (10.2)

Updates were made to the following sections. The changes are explained below.

Location	Change
Throughout the document	Changed the filename from <code>Zenworks_Personality_Migration.zip</code> to <code>ZENworksPersonalityMigration.exe</code> .
Section 2.3, “Installing ZENworks Personality Migration by Using ZENworks Bundles,” on page 11	Updated this section.
Section 2.4, “Installing the ZENworks Personality Migration Core,” on page 12	Updated this section.
Section 2.5, “Installation Options,” on page 12	Added the repair option to the list.
Section 4.2, “Applying a User’s Personality Settings and Data,” on page 22	Updated this section.
Section 5.1.2, “Using the Template Builder to Create a Template,” on page 28	Updated this section.
Section 5.3, “Automatically Migrating Personality Settings,” on page 37	Updated this section.
Section 5.4, “Migrating Personality Settings by Using the Command Prompt,” on page 38	Added this section for this release.
Section 5.5, “Command Prompt Options to Store and Apply Personalities,” on page 38	Added this section for this release.

Location	Change
Appendix B, "Troubleshooting Personality Migration," on page 41	<p>Added or updated the following scenarios:</p> <ul style="list-style-type: none"> ◆ "Migration of the archive.pst file from a customized location in Microsoft Outlook fails" on page 42 ◆ "The Personality Migration application hangs" on page 42 ◆ "How do I enable debug logging for settings migration in Personality Migration?" on page 41 ◆ "Where do I find the Personality Migration log files?" on page 41
Section D.2.1, "Adobe Applications," on page 46	Updated this section for this release.
Section D.2.4, "Microsoft Applications," on page 47	Updated the information for Microsoft Outlook settings.
Appendix E, "Cross-User Migration Scenarios," on page 55	Added this chapter for this release.