

Novell ZENworks® for Desktops Preboot Services

4

www.novell.com

MENU EDITOR USER GUIDE



Novell®

Legal Notices

Novell, Inc. makes no representations or warranties with respect to the contents or use of this documentation, and specifically disclaims any express or implied warranties of merchantability or fitness for any particular purpose. Further, Novell, Inc. reserves the right to revise this publication and to make changes to its content, at any time, without obligation to notify any person or entity of such revisions or changes.

Further, Novell, Inc. makes no representations or warranties with respect to any software, and specifically disclaims any express or implied warranties of merchantability or fitness for any particular purpose. Further, Novell, Inc. reserves the right to make changes to any and all parts of Novell software, at any time, without any obligation to notify any person or entity of such changes.

You may not export or re-export this product in violation of any applicable laws or regulations including, without limitation, U.S. export regulations or the laws of the country in which you reside.

Copyright © 1993-2002 Novell, Inc. All rights reserved. No part of this publication may be reproduced, photocopied, stored on a retrieval system, or transmitted without the express written consent of the publisher.

U.S. Patent Nos. 5,633,931; 5,692,129; 5,758,069; 5,761,499; 5,859,978; 5,893,118; 5,905,860; 6,023,586; 6,047,312; 6,061,743; 6,105,069; 6,115,549; 6,144,959; 6,173,289. Patents Pending.

Novell, Inc.
1800 South Novell Place
Provo, UT 84606
U.S.A.

www.novell.com

Menu Editor User Guide
May 2002
103-000219-001

Online Documentation: To access the online documentation for this and other Novell products, and to get updates, see www.novell.com/documentation.

Novell Trademarks

NetWare is a registered trademark of Novell, Inc., in the United States and other countries.

Novell is a registered trademark of Novell, Inc., in the United States and other countries.

ZENworks is a registered trademark of Novell, Inc., in the United States and other countries.

Third-Party Trademarks

All third-party trademarks are the property of their respective owners.

Contents

About This Guide	7
Documentation Conventions	7
1 Using the ZENworks for Desktops Preboot Services Menu Editor	9
What is PXE?	9
What is the Preboot Services (PXE) Menu?	10
What is the Preboot Services Menu Editor?	10
Using the Preboot Services Menu Editor.	11
Modifying the Default Menu	12
Creating a New Preboot Services (PXE) Menu	14

About This Guide

This guide contains information that will help you understand and use the Novell® ZENworks® for Desktops 4 Preboot Services Menu Editor utility.

Documentation Conventions

In Novell documentation, a greater than symbol (>) is used to separate actions within a step and items in a cross-reference path.

A trademark symbol (®, ™, etc.) denotes a Novell trademark. An asterisk (*) denotes a third-party trademark.

1

Using the ZENworks for Desktops Preboot Services Menu Editor

This section includes information to help you understand the Novell® ZENworks® for Desktops 4 Preboot Services Menu Editor, including:

- ♦ [“What is PXE?” on page 9](#)
- ♦ [“What is the Preboot Services \(PXE\) Menu?” on page 10](#)
- ♦ [“What is the Preboot Services Menu Editor?” on page 10](#)
- ♦ [“Using the Preboot Services Menu Editor” on page 11](#)

What is PXE?

ZfD 4 Preboot Services utilizes the Preboot Execution Environment (PXE), an industry-standard protocol that allows a workstation to boot up and execute a program from the network before the workstation operating system starts. The PXE environment is loaded from either the Network Interface Card (NIC) in flash or ROM, or in the same memory as the system BIOS.

By using Preboot Services, you can put an image on a workstation even if the workstation's hard disk is blank. You do not need to use imaging boot diskettes or CDs, or install a ZfD Workstation Imaging (Linux*) partition on the workstation. In order to use Preboot Services, you need to install the Workstation Imaging and Preboot Services components of ZfD 4 on your server and enable workstations for PXE.

What is the Preboot Services (PXE) Menu?

When a PXE-enabled workstation is booted, it broadcasts for DHCP information and receives a response from both the DHCP and Proxy DHCP servers. The workstation will then download the Preboot Services client and check for imaging work with the Transaction server. If there is imaging work to do, the workstation displays a default ZfD Preboot Services (PXE) Menu displaying the following options:

- ◆ Start ZENworks Imaging in Automatic Mode
- ◆ Start ZENworks Imaging in Maintenance Mode
- ◆ Disable the ZEN Partition
- ◆ Enable the ZEN Partition

What is the Preboot Services Menu Editor?

If you want to create a custom Preboot Services (PXE) menu, you can use the ZfD Preboot Services Menu Editor to set and run your own actions and DOS utilities on the client workstation. Novell provides this utility as a service; no custom DOS or Linux* utilities have been developed by Novell.

The Menu Editor is a Windows*-based, option-driven utility that lets you do the following on the Preboot Services (PXE) menu:

- ◆ Add menu items or submenus to the Preboot Services (PXE) menu
- ◆ Add executable commands to be performed on the client workstation
- ◆ Delete a submenu or an action from an existing menu

The Menu Editor generates menu files and stores them on the ZfD Preboot Services server. These files can be selected from the Menu Editor interface and downloaded to a Preboot Services client workstation.

Installation

If you chose the Preboot Services component during the ZfD 4 Preboot Services installation program, the Menu Editor is automatically installed on Windows NT*/2000 servers you designate as Preboot Services servers. For more information, see [Setting Up ZENworks for Desktops Preboot Services](#) in ZfD 4 Preboot Services *Installation and Configuration*. The Menu Editor is not installed to a NetWare® server during the Preboot Services installation; the files must be accessed from a Windows workstation.

Accessing the Menu Editor

If you installed to a Windows server, you can access the Menu Editor from the Windows desktop (after the PXE-enabled Windows workstation is imaged) by clicking Start > Programs > ZEN Preboot Services > ZEN Preboot Services Menu Editor.

If you need to access the Menu Editor from a NetWare server, locate the files on the *ZENworks for Desktops 4 Program* CD in the \MENU EDITOR folder > copy them to your NetWare server. Then, from a Windows machine, you can map a drive to the location on the server and run the Menu Editor.

The Menu Editor Interface

The Menu Editor interface is not available unless you are creating or editing an existing menu. Add and delete functions are available from the Options menu or from icons on the toolbar. Menu Editor functions can also be initiated with keyboard commands from a Windows workstation. For example, pressing the Insert key while in the Menu Editor adds a menu item, and pressing the Delete key deletes a menu item.

You can enter descriptive text about the menu in the Information field. You can also add help by entering appropriate text in the Help field.

Using the Preboot Services Menu Editor

Although you will probably use the default Preboot Services (PXE) Menu for ZfD Preboot Services, you may want to take advantage of the flexibility of the Preboot Services Menu Editor to create a new menu or to modify the default menu.

This section contains the following information:

- ♦ “Modifying the Default Menu” on page 12
- ♦ “Creating a New Preboot Services (PXE) Menu” on page 14
- ♦ “Creating a Submenu” on page 15
- ♦ “Creating Functions Within the Menu” on page 16
- ♦ “Saving the Menu as a .DAT File” on page 17

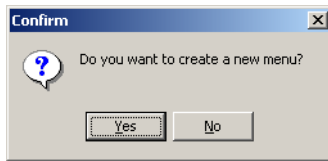
Modifying the Default Menu

There may be circumstances that require you to limit the options on the ZfD 4 Preboot Services (PXE) menu. For example, you may want to restrict the user from using the Linux bash command line options. In such a case, you must create a new default menu and copy it to proper location on the Preboot Services server.

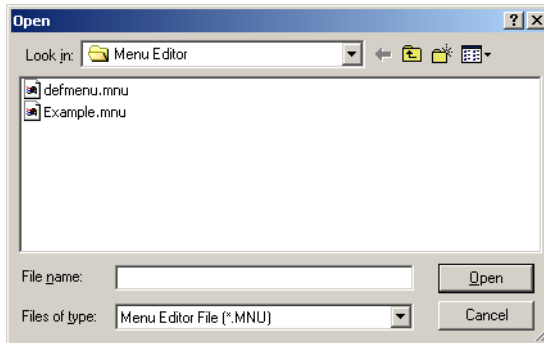
The following steps assume that you want to overwrite the existing default menu. If you want to save the options of this menu, we recommend that you rename DEFMENU.MNU (for example, DEFMENU_OLD.MNU), edit it with the Menu Editor to meet your needs, then save it again as DEFMENU.MNU.

To modify the default menu:

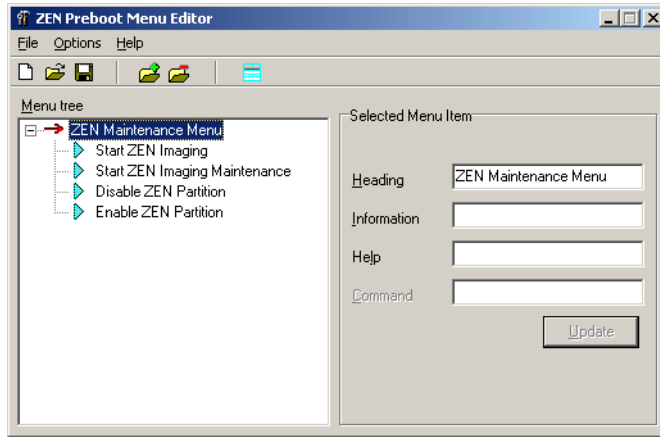
- 1 In the Windows desktop, click Start > Programs > ZEN Preboot Services > ZEN Preboot Services Menu Editor to display the following dialog box:



- 2 Click No to display the menu files that reside in the directory from which MEDITOR.EXE is running.



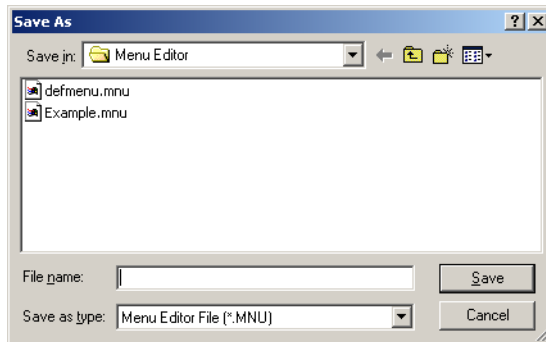
- 3 Select (or browse to) the DEFMENU.MNU you want to change > click Open.



- 4 Select the menu item that you want to delete > click Options > Delete to display a message similar to the following:

Do you want to delete *Start ZEN Imaging Maintenance* and its subitems?

- 5 Click Yes to return to the Menu Editor.
- 6 Click File > Save. This opens the Save As dialog box.



- 7 Select DEFMENU.MNU to enter this filename in the File Name field > click Save. The following prompt is displayed:

Do you want to overwrite the old file?

- 8 Click Yes to overwrite the file and to return to the Menu Editor window. You have now modified the DEFMENU.MNU menu template.

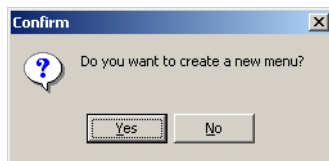
- 9** In the Menu Editor window, click File > Save to reopen the Save As dialog box.
- 10** In the Save As Type drop-down list, select ZEN Preboot Menu file (*.DAT).
- 11** Select DEFMENU.DAT to enter this file name in the File Name field > click Save. The following prompt is displayed:

```
Do you want to overwrite the old file?
```
- 12** Click Yes to overwrite the file and to return to the Menu Editor window.
You have now modified the data file that will be displayed as the menu on a PXE workstation.
- 13** Copy the new DEFMENU.DAT file to the /TFTP folder on the Preboot Services server.

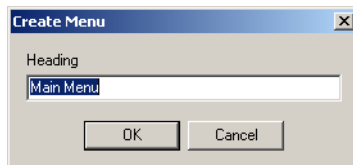
Creating a New Preboot Services (PXE) Menu

Use the following steps to create a new Preboot Services (PXE) menu using the ZfD 4 Preboot Services Menu Editor:

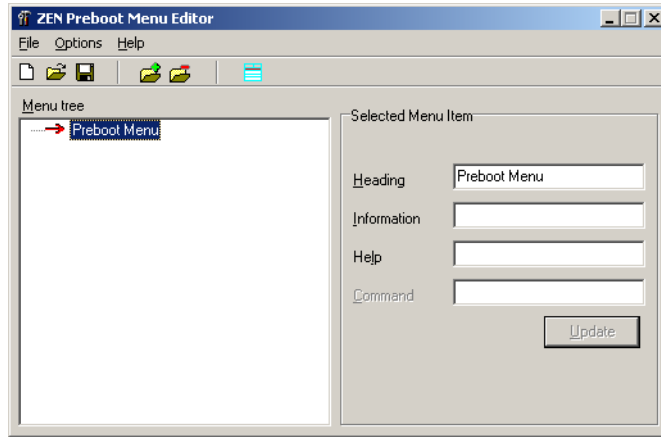
- 1** In the Windows desktop, click Start > Programs > ZEN Preboot Services > ZEN Preboot Services Menu Editor to display the following dialog box:



- 2** Click Yes to display the Create Menu dialog box.



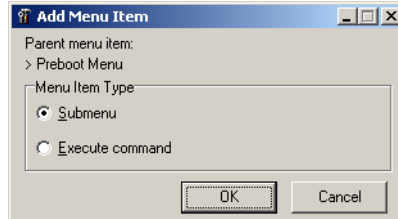
- 3** Enter the name of menu you want to create > click OK to display the ZEN Preboot Menu Editor window.



Creating a Submenu

If you want to create your own functions for the Preboot Services (PXE) menu, you need to create a submenu of these functions. Use the following steps to create a submenu.

- 1 Select Add from the Options menu to display the Add Menu Item window.



- 2 Select Submenu > click OK to display the Add Menu dialog box.
- 3 In the Heading field of the dialog box, enter the text you want to use as the option in the submenu > click OK.

The Menu Editor displays the submenu option as a subordinate item to the main menu you have already created.

- 4 Enter descriptive and help text in the Information and Help fields.
- 5 Click Update to save the text of the submenu option and any accompanying text you have created.

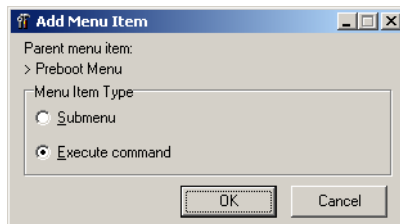
Although the submenu item is now created and will appear on the Preboot Services (PXE) menu, it will not launch any utility: it is merely a text heading that serves as a navigation tool to options that actually perform functions.

Creating Functions Within the Menu

As stated earlier in this document, ZfD 4 Preboot Services ships with a Preboot Services (PXE) menu that allows only limited, predesigned actions from the client workstation. Novell does not ship other DOS or Linux* utilities. However, if you want to add functionality of your own, you can do so with the Preboot Services Menu Editor.

To add executable commands to the Menu Editor:

- 1 In the Preboot Services Menu Editor window, select a menu item > click Options > Add to display the Add Menu Item window.



- 2 Click Execute Command > OK.
- 3 In the Execute Command dialog box, enter menu text that describes the functionality of your program > click OK.
- 4 Enter the command parameters of the utility you want to run > click OK.
- 5 Enter descriptive text about the item you have created > click OK.
- 6 Enter any help text that you want to be accessible by an F1 command for this menu item > click OK.
- 7 When you have finished creating the menu, click File > Save to save the structure.

By default, the file is saved in .MNU format, which is used as a template by the Preboot Services Menu Editor interface. To be used by the Preboot Services (PXE) menu, this file must be exported to a binary (.DAT) format. For more information, see [“Saving the Menu as a .DAT File” on page 17](#).

Saving the Menu as a .DAT File

To create a .DAT file for the Preboot Services (PXE) menu using a .MNU file:

- 1** Open the Preboot Services Menu Editor > click No to display the existing .MNU files saved to your default folder (the same folder where the menu editor, MEDITOR.EXE, resides.)
- 2** Select the .MNU file of the menu you want to export for later use by the Preboot Services (PXE) menu > click File > Save.
- 3** In the Save As Type drop-down list, select ZEN Preboot Menu file (*.DAT).
- 4** In the file Name field, enter DEFMENU > click Save to return to the Menu Editor window. You have now created a data file that can be displayed as the default menu on a PXE workstation.
- 5** Copy the DEFMENU.DAT file to the /TFTP folder on the Preboot Services Server.

Note that the .DAT file is saved in the local folder from which you are running the Preboot Services Menu Editor. You must copy the file to the \TFTP folder at the Preboot Services server.

