



# ZENworks 2020 Update 2 Upgrade Guide

August 2021

## **Legal Notice**

For information about legal notices, trademarks, disclaimers, warranties, export and other use restrictions, U.S. Government rights, patent policy, and FIPS compliance, see <https://www.novell.com/company/legal/>.

**Copyright © 2008 - 2021 Micro Focus Software Inc. All rights reserved.**

The only warranties for products and services of Micro Focus and its affiliates and licensors (“Micro Focus”) are set forth in the express warranty statements accompanying such products and services. Nothing herein should be construed as constituting an additional warranty. Micro Focus shall not be liable for technical or editorial errors or omissions contained herein. The information contained herein is subject to change without notice.

---

# Contents

<b>About This Guide</b>	<b>5</b>
<b>1 Upgrading or Migrating the Primary Servers</b>	<b>7</b>
1.1 Changes in the Primary Server Upgrade or Migration Process	7
1.2 Understanding the Upgrade Installer	11
1.3 Database Considerations	12
1.4 Understanding the Upgrade Order	13
1.5 Calibrating Memory Requirements on the ZENworks Server	15
<b>2 Upgrading Linux and Windows Primary Servers to ZENworks 2020 Update 2</b>	<b>17</b>
2.1 Prerequisites	17
2.1.1 For Linux Servers	17
2.1.2 For Windows Server	18
2.1.3 For Linux and Windows Servers	18
2.1.4 Installing Docker	19
2.1.5 Installing Docker Compose	20
2.1.6 Using Windows to Create a ZENworks Installation DVD from an ISO Image	21
2.1.7 Using Linux to Create a ZENworks Installation DVD from an ISO Image	21
2.2 Upgrading the Primary Servers	21
2.2.1 Using the GUI to Upgrade Linux and Windows Servers	22
2.2.2 Using a Command Line to Upgrade a Linux Server	29
2.2.3 Upgrading the ZENworks 2020 Update 2 Lighthouse build to ZENworks 2020 Update 2 FCS	31
2.2.4 Running ZENworks Diagnostic Center to Verify the Database Schema	33
2.2.5 Running the Cleanup Utility	34
2.2.6 Post-Upgrade Configurations	39
2.3 Troubleshooting	41
<b>3 Appliance Migration</b>	<b>51</b>
3.1 Prerequisites	51
3.2 Preparing the ZENworks 2020 Appliance for Migration	52
3.3 Deploying and Configuring the ZENworks 2020 Update 2 Appliance	53
3.4 Migrating ZENworks 2020 Data to ZENworks 2020 Update 2 Appliance	54
3.5 Post migration	54
3.5.1 Viewing the Renamed Services and File Locations	56
3.6 Updating the ZENworks 2020 Update 2 Lighthouse Appliance to ZENworks 2020 Update 2 FCS	57
3.7 Replacing Primary Servers	57
3.8 Moving a Primary Server to an Appliance	57
3.9 Running the Cleanup Utility	57
<b>4 Updating Satellites and Managed Devices to ZENworks 2020 Update 2</b>	<b>59</b>
4.1 Prerequisites for Updating Satellite Servers or Managed Devices	59

4.2	Supporting ZENworks 2017 Device Upgrades . . . . .	60
4.3	Updating Satellite Servers and Managed Devices. . . . .	60
<b>5</b>	<b>Upgrading Servers in a Vertica-enabled Zone</b>	<b>61</b>
5.1	Best Practices . . . . .	61
5.2	Understanding the Upgrade Order in a Vertica-enabled Zone . . . . .	61
5.3	Prerequisites . . . . .	62
5.4	Upgrading the First Primary Server . . . . .	63
5.4.1	If the First Primary Server is an Appliance Server . . . . .	63
5.4.2	If the First Primary Server is a not an Appliance Server . . . . .	64
5.5	Upgrading Other Servers in the Zone (Appliance) . . . . .	65
5.6	Upgrading Other Servers in the Zone (Non-appliance) . . . . .	66
5.7	Examples. . . . .	67
5.7.1	Scenario 1 . . . . .	67
5.7.2	Scenario 2 . . . . .	67
<b>A</b>	<b>Documentation Updates</b>	<b>69</b>
A.1	May 2021: ZENworks 2020 Update 2. . . . .	69

# About This Guide

This guide includes information about new enhancements in ZENworks 2020 Update 2 and information to help you successfully upgrade to this release.

The information in this guide is organized as follows:

- ♦ [Chapter 1, “Upgrading or Migrating the Primary Servers,” on page 7](#)
- ♦ [Chapter 2, “Upgrading Linux and Windows Primary Servers to ZENworks 2020 Update 2,” on page 17](#)
- ♦ [Chapter 3, “Appliance Migration,” on page 51](#)
- ♦ [Chapter 4, “Updating Satellites and Managed Devices to ZENworks 2020 Update 2,” on page 59](#)
- ♦ [Chapter 5, “Upgrading Servers in a Vertica-enabled Zone,” on page 61](#)
- ♦ [Appendix A, “Documentation Updates,” on page 69](#)

## Audience

This guide is intended for ZENworks administrators.

## Feedback

We want to hear your comments and suggestions about this manual and the other documentation included with this product. Please use the comment on this topic link at the bottom of each page of the online documentation.

## Additional Documentation

ZENworks is supported by other documentation (in both PDF and HTML formats) that you can use to learn about and implement the product.



# 1 Upgrading or Migrating the Primary Servers

Using the ZENworks 2020 Update 2 installation media, you can directly upgrade or migrate a Primary Server to ZENworks 2020 Update 2, if it is using ZENworks 2020 or later.

If the upgrade installer reports any of the following issues during the upgrade, follow the recommended procedures to resolve the problem:

- ♦ **Unsupported ZENworks version:** Upgrade all Primary Servers to ZENworks 2020 Update 2. Ensure that all Primary Servers in the zone have the same version of ZENworks.
- ♦ **Unsupported operating systems:** Upgrade the operating systems to a supported version. For more information about the discontinued operating systems, see the [ZENworks 2020 Update 2 System Requirements](#).

---

**IMPORTANT:** Do not extract the ISO image and use it to install. The installation must be run from an installation DVD.

---

The following sections provide information about upgrading to ZENworks 2020 Update 2:

- ♦ [Section 1.1, “Changes in the Primary Server Upgrade or Migration Process,” on page 7](#)
- ♦ [Section 1.2, “Understanding the Upgrade Installer,” on page 11](#)
- ♦ [Section 1.3, “Database Considerations,” on page 12](#)
- ♦ [Section 1.4, “Understanding the Upgrade Order,” on page 13](#)
- ♦ [Section 1.5, “Calibrating Memory Requirements on the ZENworks Server,” on page 15](#)

## 1.1 Changes in the Primary Server Upgrade or Migration Process

As ZENworks aims to adopt a more robust and flexible architecture, and to align itself with the Micro Focus standards, some enhancements have been introduced to the Upgrade process in the ZENworks 2020 Update 2 release. Though the procedure to upgrade to ZENworks 2020 Update 2 essentially remains the same, as in the previous release version, some of the significant changes introduced in this release are as follows:

**Requirement to install Docker and Docker Compose on a Linux Server:** Before upgrading or installing ZENworks 2020 Update 2 on a Linux Primary Server, you are required to install Docker and Docker Compose on the server. This is not applicable for an Appliance server. For more information on Docker, see <https://docs.docker.com/>. For more information, see [Installing Docker](#) and [Installing Docker Compose](#).

**Migration of server data to new file path:** After upgrading to ZENworks 2020 Update 2 on a Windows, Appliance or a Linux Primary Server, ZENworks Server data such as MSIs, RPMs, logs, and configuration files that were earlier in the Novell file path will be moved to the new Micro Focus file path.

**Upgrade all Primary Servers before configuring the Antimalware Database:** Antimalware is a new component of ZENworks Endpoint Security beginning in ZENworks 2020 Update 2. If you intend to activate the Antimalware entitlement in Endpoint Security Management and configure the Antimalware Database, you need to update all Primary Servers in the zone before configuring this database.

This requirement is only when using the Antimalware Database, which is needed if you want to monitor malware status and Antimalware Agent activity on the dashboard or from the device Antimalware page. You can still activate Antimalware, configure the Antimalware Server and Ondemand Content Master, and deploy the Antimalware Enforcement policy to protect devices, without upgrading all servers, as long as you do not configure the Antimalware Database.

For more information about Antimalware, see the [ZENworks Endpoint Security Antimalware Reference](#).

**Renaming of ZENworks Server services:** After upgrading to ZENworks 2020 Update 2 on a Windows, Appliance or a Linux Primary Server, certain ZENworks Server services such as ZENserver service, ZENloader service and ZENjoinproxy service, will be renamed from Novell to Micro Focus.

A list of all the changes introduced in the upgrade process in the ZENworks 2020 Update 2 release, are as follows:

Change Categories	Primary Server on Linux and on Appliance	Primary Server on Windows
New prerequisites	Install Docker v19.x or higher ( <b>not applicable for Appliance</b> )	Not Applicable
	Install Docker Compose v1.28.x or higher ( <b>not applicable for Appliance</b> )	Not Applicable
	(Conditional) If you are using a shared content repository, mount the content repository to the new Micro Focus location. Example: /var/opt/microfocus/zenworks/content-repo	(Conditional) If you are using a shared content repository, mount the content repository to the new Micro Focus location. Example: C:\Program Files (x86)\Micro Focus\zenworks\content-repo



Change Categories	Primary Server on Linux and on Appliance	Primary Server on Windows
Renaming of ZENworks Server services	ZENworks Server services are renamed by prefixing them with Micro Focus instead of Novell.	ZENworks Server services are renamed by prefixing them with Micro Focus instead of Novell.
<b>NOTE:</b> From this release onwards, ZooKeeper will run as a separate service and not within the ZENserver service.	<p data-bbox="672 369 773 396">Example:</p> <p data-bbox="672 422 1045 506">novell-zenserver service is now renamed to microfocus-zenserver service</p> <p data-bbox="672 537 1045 621">novell-zenloader service is now renamed to microfocus-zenloader service</p> <p data-bbox="672 653 1045 772">novell-zenjoinproxy service is now renamed to microfocus-zenjoinproxy service</p> <p data-bbox="672 804 1045 982"><b>NOTE:</b> Services related to the ZENworks agent will retain the Novell naming convention. For example, novell-zenworks-xplatzmd.service will not be renamed.</p> <p data-bbox="672 1014 1045 1104">The zenpostgresql.service will also retain the Novell naming convention.</p>	<p data-bbox="1065 369 1166 396">Example:</p> <p data-bbox="1065 422 1438 506">Novell ZENworks Server service is now renamed to Micro Focus ZENworks Server.</p> <p data-bbox="1065 537 1438 657">Novell ZENworks Join Proxy service is now renamed to Micro Focus ZENworks Join Proxy</p> <p data-bbox="1065 688 1438 808">Novell ZENworks Services Monitor service is now renamed to Micro Focus ZENworks Services Monitor</p> <p data-bbox="1065 840 1438 919">Novell ZENworks Loader service is now renamed to Micro Focus ZENworks Loader</p> <p data-bbox="1065 951 1438 1136"><b>NOTE:</b> Services related to the ZENworks agent will retain the Novell naming convention. For example, the Novell ZENworks Agent Service will not be renamed.</p> <p data-bbox="1065 1167 1438 1283">The ZENworks Embedded Datastore-PostgreSQL will retain the Novell naming convention.</p>

Change Categories	Primary Server on Linux and on Appliance	Primary Server on Windows
New location for server related files and data	<p>Server related files and data will now be available in the new Micro Focus location, while the agent related files and data will be retained in the old Novell location.</p> <p>Example:</p> <p><b>Log Files:</b> The log files that were earlier in <code>/var/opt/novell/logs/zenworks</code> will now be available in <code>/var/opt/microfocus/logs/zenworks</code></p> <p><b>Configuration Files:</b> The configuration files that were earlier in <code>/etc/opt/novell/zenworks</code> will now be available in <code>/etc/opt/microfocus/zenworks</code></p> <p><b>Libraries:</b> The libraries that were earlier in <code>/opt/novell/zenworks</code> will now be available in <code>/opt/microfocus/zenworks</code></p> <p><b>NOTE:</b> The location of the ZENworks agent files will be retained in the old Novell file path. For example, configuration files related to the ZENworks agent data will be retained in <code>/etc/opt/novell/zenworks</code>.</p>	<p>Server related files and data will now be available in the new Micro Focus location, while the agent related files and data will be retained in the old Novell location.</p> <p>Example:</p> <p><b>Log Files:</b> The log files that were earlier in <code>C:\Program Files (x86)\Novell\ZENworks\logs</code> will now be available in <code>C:\Program Files(x86)\Micro Focus\ZENworks\logs</code></p> <p><b>Configuration Files:</b> The configuration files that were earlier in <code>C:\Program Files (x86)\Novell\ZENworks\conf</code> will now be available in <code>C:\Program Files (x86)\Micro Focus\ZENworks\conf</code></p> <p><b>Libraries:</b> The libraries that were earlier in <code>C:\Program Files (x86)\Novell\ZENworks\lib</code> will now be available in <code>C:\Program Files (x86)\Micro Focus\ZENworks\lib</code></p> <p><b>NOTE:</b> The location of the ZENworks agent files will be retained in the Novell file path. For example, configuration files related to the ZENworks agent data will be retained in <code>C:\Program Files (x86)\Novell\ZENworks\conf</code>.</p>

Change Categories	Primary Server on Linux and on Appliance	Primary Server on Windows
Introduction of a new environment variable	Not Applicable	<p>A new environment variable %ZENSERVER_HOME% has been introduced that points to the new Micro Focus file path C:\Program Files (x86)\Micro Focus\ZENworks.</p> <p>The existing environment variable %ZENWORKS_HOME% is still applicable to access the ZENworks agent data, which is retained in the Novell file path.</p>
Renaming of Configure actions	<p>Configure actions have been renamed from Novell to Micro Focus. However, the configure actions that follow the Novell naming convention are still available.</p> <p>For example, the configure action <code>novell-zenworks-configure -c Start</code> is now renamed to <code>microfocus-zenworks-configure -c Start</code></p>	<p>Configure actions have been renamed from Novell to Micro Focus. However, the configure actions that follow the Novell naming convention are still available.</p> <p>For example, the configure action <code>novell-zenworks-configure -c Start</code> is now renamed to <code>microfocus-zenworks-configure -c Start</code></p>
Running the Cleanup Utility	<p>After upgrade, the ZENworks server configuration will be copied from the old Novell file path to the new Micro Focus file path. However, the ZENworks server binaries and old configuration in the old file path is retained during the upgrade process. You can run the cleanup utility provided with the build, to remove the retained server data.</p> <p>For more information, see <a href="#">“Running the Cleanup Utility on a Linux or Appliance Server” on page 36</a></p>	<p>After upgrade, the ZENworks server configuration will be copied from the old Novell file path to the new Micro Focus file path. However, the ZENworks server binaries and old configuration in the old file path is retained during the upgrade process. You can run the cleanup utility provided with the build, to remove the retained server data.</p> <p>For more information, see <a href="#">“Running the Cleanup Utility on Windows Server” on page 38</a></p>

## 1.2 Understanding the Upgrade Installer

- ◆ Upgrades all ZENworks 2020 Configuration Management components on the Primary Servers, including Configuration Management, Asset Management, Asset Inventory, Endpoint Security Management, and Patch Management.

- ◆ Upgrades the ZENworks database and the Audit database. This occurs when the first server is upgraded.
- ◆ After you upgrade the first server to ZENworks 2020 Update 2, the System Update is available for upgrading the supported versions of ZENworks Satellite Servers and managed devices to ZENworks 2020 Update 2.

The time required to complete the upgrade on the first Primary Server depends on the size of the data present in database.

## 1.3 Database Considerations

Before you perform the upgrade from ZENworks 2020 to ZENworks 2020 Update 2, consider the following guidelines:

- ◆ If you are using an external database, you need to upgrade or migrate the external database to the supported latest version before upgrading the Primary Server.

---

**NOTE:** If the ZENworks database is configured to the compatibility level of an older version of the Microsoft SQL Server, for example, 2005, then it should be set to the current supported version of the SQL Server.

---

For more information about the supported database versions, see “[Database Requirements](#)”, in the [ZENworks Server Installation](#) guide.

- ◆ (Recommended) Select the type of database based on the number of devices in the environment:
  - ◆ For environments with up to 5,000 devices, use Embedded PostgreSQL
  - ◆ For environments with up to 20,000 devices, use Remote PostgreSQL.
  - ◆ For environments with up to 40,000 devices, use MS SQL or Oracle.
  - ◆ For environments with more than 40,000 devices, use Oracle Enterprise Edition (with partitioning). For information about partitioning, see [Oracle Enterprise with Partitioning](#), in the [ZENworks Server Installation](#) guide.

If the existing database does not meet the recommendation, migrate the existing database after the upgrade is complete.

- ◆ For upgrading database, you can either upgrade the database on the same device where it is running or you can migrate the database using a third-party upgrade installer.

If you are using an embedded PostgreSQL database, the ZENworks Upgrade installer will upgrade and rebuild the database.

---

**NOTE:** On a server that hosts an embedded PostgreSQL database, ensure that you have the required free space, equal to the size of the database file.

---

- ◆ You can only upgrade to a higher version of the same database. You cannot migrate from one database to another using the Upgrade installer.
- ◆ For all external databases, stop the ZENworks services on all other Primary Servers before performing the database upgrade.

- 
- ♦ **IMPORTANT:** If you are using Microsoft SQL server database, before upgrading your zone, ensure that the database tables are available in the default database schema DBO. If the ZENworks database tables are not present under the default database schema DBO, then to avoid any issues, contact Micro Focus Customer Support.

To find out the database schema, run the following query in the Microsoft SQL database:

```
SELECT distinct(SCHEMA_NAME(schema_id)) as OWNER FROM sys.objects WHERE type='U'
```

---

## 1.4 Understanding the Upgrade Order

Ensure that you perform the ZENworks 2020 Update 2 upgrade tasks in the following order:

1. **Upgrade the Operating System:** If the operating system installed on the device is not supported by ZENworks, upgrade the operating system to the latest supported version.

For more information on the supported operating systems, see [ZENworks 2020 Update 2 System Requirements](#).

---

### NOTE

Refer to the following scenarios for information on the order in which the operating system (OS) and ZENworks upgrades need to be performed:

- ♦ On Windows Primary Servers: You can perform major and minor in-place OS upgrades. The following scenarios provide clarity on the upgrade order to be followed for the major and minor OS upgrades:
  - ♦ To perform an OS upgrade to a version that is supported by ZENworks 2020 and ZENworks 2020 Update 2, you can perform the upgrade in any order. Example: If you are upgrading from Windows 2012 Server to Windows 2016 Server, you can either upgrade the OS first or ZENworks first.
  - ♦ To perform an OS upgrade from a version that is not supported by ZENworks 2020 Update 2, you need to first upgrade the OS and then upgrade to ZENworks 2020 Update 2.
  - ♦ To perform an OS upgrade to a version that is not supported by ZENworks 2020 but is supported by 2020 Update 2, you need to first upgrade to ZENworks 2020 Update 2 and then upgrade the OS.
- ♦ On Linux Primary Servers: You cannot perform a major in-place OS upgrade. To perform a major in-place upgrade, you need to replace the current Primary Server having the older OS version, with a new Primary Server having the latest supported OS version. Example: If you are upgrading from SLES 12 SP4 to SLES 15, you need to first upgrade to ZENworks 2020 Update 2 and then replace the SLES 12 SP4 Primary Server with a new SLES 15 Primary Server.

However, you can perform minor in-place OS upgrades. The following scenarios provide clarity on the upgrade order to be followed for minor OS upgrades:

- ♦ To perform a minor upgrade to an OS version that is supported by ZENworks 2020 and ZENworks 2020 Update 2, you can perform the upgrade in any order. Example: If you are upgrading from SLES 12 SP3 to SLES 12 SP4, you can either upgrade the OS first or ZENworks first.

- ◆ To perform a minor OS upgrade from an OS version that is supported by ZENworks 2020 Update 2 but not ZENworks 2020, you need to first upgrade the OS and then upgrade to ZENworks 2020 Update 2. Example: If you are upgrading from SLES 12 to SLES 12 SP4, you need to first upgrade the OS to SLES 12 SP4 and then upgrade to ZENworks 2020 Update 2.
  - ◆ To perform a minor OS upgrade from an OS version that is supported by ZENworks 2020 Update 2, but not supported by ZENworks 2020 you need to first upgrade to ZENworks 2020 Update 2 and then upgrade the OS. Example: If you are upgrading from SLES 12 SP4 to SLES 12 SP5, you need to first upgrade to ZENworks 2020 Update 2 and then perform an OS upgrade to SLES 12 SP5.
- 

**IMPORTANT:** Before you perform the upgrade, ensure that you back up the relevant server and CA.

---

## 2. Upgrade ZENworks: Upgrade ZENworks to the latest version.

The sequence in which the Primary Servers are to be upgraded in the zone, are as follows:

- (Conditional) If you have already migrated to the Embedded PostgreSQL database, first upgrade the device that hosts the database, then upgrade the other Primary Servers.
  - (Conditional) If you have enabled Vertica in your zone as a part of an earlier ZENworks release, then upgrade those servers in which Vertica is enabled, then upgrade the other Primary Servers. For more information, see [Upgrading Servers in a Vertica-enabled Zone](#).
- ◆ The ZENworks 2020 Update 2 upgrade installer can upgrade only the server on which you run it.
- 

**NOTE:** After you upgrade the first Primary Server to ZENworks 2020 Update 2, all other servers must be immediately upgraded to ZENworks 2020 Update 2.

---

- ◆ When you perform the upgrade for the first time in the Management Zone, only one Primary Server can be upgraded. The subsequent upgrade of additional Primary Servers can be done in parallel, or in any order.

While upgrading the first Primary Server, you must stop the ZENworks services on all other Primary Servers. During the upgrade of additional Primary Servers, you must stop the services on those servers that have not been upgraded. If you do not stop the services, the database might be inconsistent.

---

**NOTE:** The Schema and License information will be updated only during the first Primary Server upgrade.

---

- ◆ You must upgrade the Primary Servers first; then upgrade the Satellite Servers and agents in the zone.

---

**IMPORTANT:** When upgrading additional Primary Servers in the zone, ensure that the ZENworks Server services are running on the upgraded first Primary Server. If the zone uses Embedded PostgreSQL, the Embedded PostgreSQL service must be running on the upgraded first Primary Server.

---

- ◆ If you are using ZENworks Reporting, then after upgrading the zone to ZENworks 2020 Update 2, ensure that you reconfigure ZENworks reporting. For more information, see [Reconfiguring ZENworks Reporting Appliance](#) in the [ZENworks Reporting Appliance Deployment and Administration Reference](#).

## 1.5 Calibrating Memory Requirements on the ZENworks Server

As per the system requirements, ZENworks recommends minimum memory requirement of 16 GB for both Appliance and Non-appliance Primary Servers. Based on the RAM size requirements, you need to ensure that memory is optimally allocated for the RDBMS (if embedded PostgreSQL is installed), Vertica, Kafka and ZENworks Services (ZENserver and ZENloader services), for these components to function effectively in the server. ZENworks provides you configure action that automatically calibrates appropriate memory for these processes.

You need to run this configure action after upgrading the server to ZENworks 2020 Update 2. However, if you plan to install Vertica in this server, then ensure that you run this Configure action only after configuring Vertica. For more information, see [Vertica Reference](#) documentation.

The scenarios in which this action should be run are:

- ◆ Non-appliance server on which only embedded PostgreSQL is installed
- ◆ Non-appliance second Primary Server
- ◆ Appliance server on which Kafka and Vertica are installed
- ◆ Appliance server on which only Vertica is installed
- ◆ Appliance server on which embedded PostgreSQL and Vertica are installed
- ◆ Appliance server on which embedded PostgreSQL and Kafka are installed
- ◆ Appliance server on which only Kafka is installed
- ◆ Appliance server on which embedded PostgreSQL, Kafka and Vertica are installed
- ◆ Appliance second Primary Server

To run this Configure action:

1. In the command line utility of the server, execute the command: `microfocus-zenworks-configure -c CalibrateMemoryConfigureAction`
2. A message is displayed informing the user that the ZENworks services will automatically restart on the server after the Configure action is run. If you want to proceed with the memory calibration, then press enter to select the default value 1 or else enter the value 2.

3. (Conditional) On an Appliance server, you will be asked if you want to install Vertica and Kafka on the server. If you plan to install Vertica and Kafka on this server, then ensure that you run this action only after configuring Vertica in the server. To exit the action, enter the value 2.  
If you do not want to install Vertica and Kafka in the server and want to proceed with memory calibration, enter the value 1.

The newly configured values for each component are displayed. If you want to view the configured values at a later point in time, then run the following Configure action:`microfocus-zenworks-configure -c DisplayMemoryConfigureAction`



# 2 Upgrading Linux and Windows Primary Servers to ZENworks 2020 Update 2

This section provides information on upgrading your Linux or Windows Primary Servers to ZENworks 2020 Update 2. To migrate your Appliance server, see [Appliance Migration](#).

## 2.1 Prerequisites

When you upgrade a Primary Server to ZENworks 2020 Update 2 for the first time in the Management Zone, complete the following tasks before running the upgrade.

### 2.1.1 For Linux Servers

- ◆ **Docker is Installed:** Docker v19.x or higher should be installed on the Primary Server that you are about to upgrade. For more information on installing Docker, see [Installing Docker](#).
  - ◆ Ensure that the Docker service is enabled at all times.
    1. To check the status of the Docker service, run the following command:

```
$ sudo systemctl status docker.service
```
    2. To enable the service, run the following command:

```
$ sudo systemctl enable docker.service
```
  - ◆ Ensure that the Docker service has started. To start the service, run the following command:

```
$ sudo systemctl start docker.service
```
- ◆ **Docker Compose is Installed:** Docker Compose v1.25.x or higher should be installed on the Primary Server that you are about to upgrade. To know the latest version of Docker Compose, navigate to <https://github.com/docker/compose/releases>. For more information on installing Docker Compose, see [Installing Docker Compose](#).
- ◆ **DNS server is configured:** Ensure that a DNS server has been set on the Primary Server that is being upgraded. Also, the hostname of the local machine should be resolvable over DNS.
- ◆ **Disable Hibernate logs:** On a Linux Primary Server, ensure that the `c3p0`, the hibernate logs for ZENLoader, and ZENServer are disabled prior to the upgrade. For more information, see [TID 7015032](#) (<https://www.novell.com/support/kb/doc.php?id=7015032>).
- ◆ **External Content-repo** If you have content-repo as a symbolic link to another folder, which is outside of the ZENworks folder structure, then ensure that you perform the steps in [Appendix E](#) in the [ZENworks Primary Server and Satellite Reference](#).

To view the remaining prerequisites that are applicable for both Windows and Linux, see [For Linux and Windows Servers](#).

## 2.1.2 For Windows Server

- ◆ **Verify Windows Installer version:** Ensure that the Windows Primary Servers have Windows Installer 4.5 or later versions installed and running.

To view the remaining prerequisites that are applicable for both Windows and Linux, see [For Linux and Windows Servers](#).

## 2.1.3 For Linux and Windows Servers

- ◆ **ZENworks Diagnostic Center:** Before upgrading your zone, ensure that you run ZDC and verify the health of the Primary Server and the Management Zone. For more information, see [ZENworks Diagnostic Center](#).
- ◆ **Review changes in the upgrade process:** Ensure that you have reviewed the changes introduced in the ZENworks 2020 Update 2 release, before upgrading the Primary Servers. For more information, see [Changes in the Primary Server Upgrade or Migration Process](#).
- ◆ **(Conditional) Shared content repository is mounted to the new location:** If it is a shared content repository, ensure that you have unmounted the repository from the old path and mounted the repository to the new Micro Focus path, that is, `/var/opt/microfocus/zenworks/content-repo` on a Linux server and `%ZENSERVER_HOME%\work\content-repo` on a Windows server.

The content-repo folder in novell path should not be renamed or deleted by the administrators.

- ◆ **Review system requirements:** Ensure that the Primary Server that you want to upgrade to ZENworks 2020 Update 2 meets all the [ZENworks 2020 Update 2 System Requirements](#). For more information, see “[Database Requirements](#)” in the [ZENworks Server Installation](#).
- ◆ **ZENworks Database:** Back up the ZENworks database.  
Also ensure that the server hosting the database is running with an active database. For more information on the prerequisites for external databases, see [Prerequisites for External Databases in ZENworks Server Installation](#)
- ◆ **Backup the ZENworks Server:** Back up the configuration files of the ZENworks Primary Server that you are upgrading. For more information, see [Backing Up and Restoring the ZENworks Server and Certificate Authority](#) in the [ZENworks Disaster Recovery Reference](#).
- ◆ **Run the upgrade in test environment:** The time required to complete the upgrade on the first Primary Server depends on the size of the data present in database. If the first Primary Server upgrade is on a device that is using an Microsoft SQL or Oracle database, then run the upgrade in a test environment (with server data similar to the production environment). This is to calculate the outage time of the production server.
- ◆ **CPU and Memory Utilization:** Ensure that there is no high CPU utilization or memory utilization during the first Primary Server upgrade.
- ◆ **Stop ZENworks services:** Stop all ZENworks services on any Primary Server that is not being upgraded in order to prevent the database from being accessed during the upgrade. Otherwise, this might result in the database being inconsistent.
  - ◆ For information about stopping ZENworks services:
    - ◆ **On a Windows Primary Server:** See “[ZENworks Services on a Windows Server](#)” in the [ZENworks Primary Server and Satellite Reference](#).

- ♦ **On a Linux Primary Server:** See “ZENworks Services on a Linux Server” in the [ZENworks Primary Server and Satellite Reference](#).

When you upgrade the first server, then the System Update is available to upgrade the ZENworks Satellite Servers and managed devices to ZENworks 2020 Update 2.

- ♦ **Synchronize time:** Ensure that the time on the server and the database are synchronized (time difference must be less than 2 minutes).

---

**NOTE:**

- ♦ If the time difference is more than 2 minutes and less than 24 hours, a warning message is displayed during the upgrade.
- ♦ If the time difference is more than 24 hours, an error message is displayed.

- 
- ♦ **Verify the ports:** Ensure that all fixed ports are free during the upgrade. If the fixed ports are blocked, the upgrade can not proceed. For the list of ports, see [ZENworks 2020 Update 1 TCP and UDP Ports](#).

If you have obtained the ZENworks upgrade software as an ISO image download, do one of the following to create the upgrade DVD:

- ♦ [Using Windows to Create a ZENworks Installation DVD from an ISO Image](#)
- ♦ [Using Linux to Create a ZENworks Installation DVD from an ISO Image](#)

---

**IMPORTANT:** Do not extract and use the ISO image for upgrading ZENworks.

---

## 2.1.4 Installing Docker

The procedure detailed in this section will enable you to download the latest version of Docker.

- 1 After registering to Suse Customer Center, generate a registration key for the operating system version of your Primary Server and register the device with the [Suse Customer Center](#).
- 2 Start YaST.
- 3 In the Administrator Settings window, select **Software > Software Repositories**.
- 4 Click **Add** to open the **Add On Product** dialog box.
- 5 Select **Extensions and Modules from the Registration Server...** Click **Next**.
- 6 From the list of **Available Extensions and Modules**, based on the platform version, select one of the following container modules, click **Next** and **Finish** the wizard. The modules and its repositories will be added to your system.
  - ♦ **SLES 12 SP3, SLES 12 SP4, SLES 12 SP5: Containers Module 12 x86\_64**
  - ♦ **SLES 15: Containers Module 15 x86\_64**
  - ♦ **SLES 15 SP1: Containers Module 15 SP1 x86\_64**
- 7 On the Linux terminal, execute the following command to install the Docker package:

```
$ sudo zypper install docker
```

---

**NOTE:** If the `zypper install docker` command fails to install docker, then run the following command to check whether the container module has been added to the repository:

```
$ sudo zypper ls
```

If the container module has not been added, then run the following command to add the container module:

**For SLES 12 SP3, SLES 12 SP4, SLES 12 SP5:**

```
$ sudo SUSEConnect -p sle-module-containers/12/x86_64
```

**For SLES 15:**

```
$ sudo SUSEConnect -p sle-module-containers/15/x86_64
```

**For SLES 15 SP1:**

```
$ sudo SUSEConnect -p sle-module-containers/15.1/x86_64
```

---

**8** Execute the following command to enable the Docker services:

```
$ sudo systemctl enable docker.service
```

**9** Execute the following command to start the Docker service:

```
$ sudo systemctl start docker.service
```

**10** Execute the following command to test whether Docker has been installed properly:

```
$ docker run hello-world
```

If the message `Hello from Docker!` is displayed, then it indicates that Docker has been installed successfully.

---

**NOTE:** After installing Docker, if you want to upgrade the Docker version, then ensure that you restart the ZENworks server services after the upgrade.

---

## 2.1.5 Installing Docker Compose

Before installing Docker Compose, ensure that you have already installed the Docker engine as elaborated in the previous section.

**1** On the Linux terminal, run the following command to download the latest release of Docker Compose, in this case Docker Compose version 1.28.2:

```
$ sudo curl -L "https://github.com/docker/compose/releases/download/1.28.2/docker-compose-$(uname -s)-$(uname -m)" -o /usr/local/bin/docker-compose
```

---

**NOTE:** If the server does not have Internet access and communicates through a proxy server, then refer to the curl man page for configuring curl to use proxy.

---

**2** Run the following command to apply executable permissions to the binary:

```
$ sudo chmod +x /usr/local/bin/docker-compose
```

---

**NOTE:** If the `docker-compose` command fails after installation, check the path. You can also create a symbolic link to `/usr/bin` or any other directory in your path.

Example:

```
$ sudo ln -s /usr/local/bin/docker-compose /usr/bin/docker-compose
```

---

- 3 Test the installation by running the following command. The Docker Compose version will be displayed.

```
$ docker-compose --version
```

---

**NOTE:** The latest release versions of Docker Compose is published in <https://github.com/docker/compose/releases>. To upgrade to the latest release, follow the steps displayed under the **Linux** tab in <https://docs.docker.com/compose/install/>. However, before upgrading Docker Compose to the latest version, ensure that you stop the ZENworks services. For more information on stopping these services, see [Stopping the ZENworks Services](#).

---

## 2.1.6 Using Windows to Create a ZENworks Installation DVD from an ISO Image

- 1 Download the ZENworks upgrade ISO image from the [Micro Focus Download site](#) to a temporary location on your Windows device.
- 2 Burn the ISO image to a DVD.

## 2.1.7 Using Linux to Create a ZENworks Installation DVD from an ISO Image

- 1 Download the ZENworks upgrade ISO image from the [Micro Focus Download site](#) to a temporary location on your Linux device.
- 2 Mount the ISO image by using the following command:

```
mount -o loop /tempfolderpath/isoimagename.iso mountpoint
```

Replace *tempfolderpath* with the path of the temporary folder, replace *isoimagename* with the ZENworks ISO file name, and replace *mountpoint* with the path of the file system location where you want to mount the image. The path specified by *mountpoint* must already exist.

For example:

```
mount -o loop /zcm11/ZCM11upgr.iso /zcm11/upgrade
```

## 2.2 Upgrading the Primary Servers

You can upgrade by using a graphical user interface (GUI) program or a command line (Linux only).

- [Section 2.2.1, “Using the GUI to Upgrade Linux and Windows Servers,” on page 22](#)
- [Section 2.2.2, “Using a Command Line to Upgrade a Linux Server,” on page 29](#)
- [Section 2.2.3, “Upgrading the ZENworks 2020 Update 2 Lighthouse build to ZENworks 2020 Update 2 FCS,” on page 31](#)

- ◆ [Section 2.2.4, “Running ZENworks Diagnostic Center to Verify the Database Schema,”](#) on page 33
- ◆ [Section 2.2.5, “Running the Cleanup Utility,”](#) on page 34
- ◆ [Section 2.2.6, “Post-Upgrade Configurations,”](#) on page 39

---

**NOTE:** After upgrading the zone, ZooKeeper is enabled on the Primary Server that is first updated. For more information see, [Post-Upgrade Configurations](#).

---

---

### IMPORTANT

- ◆ Do not use the ZENworks System Update to upgrade the Primary Servers to ZENworks 2020Update 2.

Before upgrading the ZENworks server on a Windows device, run the Windows Update on the device to ensure that all the available updates are installed on the device. Subsequently, disable the Windows Update to ensure that there are no further updates on the device when you upgrade the ZENworks server on the device. Windows Update can be enabled after upgrading ZENworks.

- ◆ Disable the Linux Update to ensure that there are no further updates on the device when you upgrade the ZENworks server on the device.
- 

## 2.2.1 Using the GUI to Upgrade Linux and Windows Servers

Perform the following procedure on the Primary Server that you want to upgrade to ZENworks 2020 Update 2, if all the prerequisites are met:

- 1 To start the ZENworks upgrade program:

- ◆ **Linux:** Do the following:

1. Download the ZENworks upgrade ISO image from the [Micro Focus Download site](#).
2. Mount the ISO by running the command `mount -o loop <ISO path including name> <mount_path>`
3. `cd` to the mounted location and run `./setup.sh`.

- ◆ **Windows:** Do one of the following:

1. Download the ZENworks upgrade ISO image from the [Micro Focus Download site](#).
2. Mount the ISO.
3. Run `setup.exe`.
4. Open a DOS window, browse to the root of the ZENworks 2020 Update 2 installation media, then enter the `setup.exe` command.

- 2 During upgrade, see [Table 2-1, “Upgrade Information,”](#) on page 23 for details on the upgrade data.

If you are using the GUI upgrade, you can also click the **Help** button for similar information.

- 3 Do one of the following on the Windows device:
  - ♦ If you selected to reboot automatically (you selected the **Yes, restart the system** option during the upgrade; see [“Restarting the Server \(applicable only for Windows\)” on page 27](#)), continue with [Step 5](#) after the booting process has completed and the services have started.
  - ♦ If you selected to reboot manually (you selected the **No, I will restart the system myself** option during the upgrade; see [“Restarting the Server \(applicable only for Windows\)” on page 27](#)), wait for the upgrade to complete and the services to start in order to verify it.
- 4 After the upgrade, the ZENworks Server data will be copied from the old Novell file path to the new Micro Focus file path. However, the ZENworks Server data in the old file path is retained during the upgrade process. After verifying whether the upgraded version of the ZENworks Server is working as expected, you can run the cleanup utility provided with the build, to remove the retained server data. For more information, see [Running the Cleanup Utility on a Linux or Appliance Server](#).
- 5 To upgrade another Primary Server, repeat from [Step 1](#).

---

**IMPORTANT:** Repeat these steps until all Primary Servers in the Management Zone are upgraded.

---



---

**NOTE:** If you are using ZENworks Reporting, then after upgrading the zone to ZENworks 2020 Update 2, ensure that you reconfigure ZENworks reporting. For more information, see [Reconfiguring ZENworks Reporting Appliance](#) in the [ZENworks Reporting Appliance Deployment and Administration Reference](#).

---

The [Table 2-1 on page 23](#) provides the upgrade information for upgrading from ZENworks 2020 to ZENworks 2020 Update 2.

**Table 2-1** Upgrade Information

Upgrade Information	Explanation
License agreement	The Upgrade installer does not proceed if the license agreement is not accepted.
ZENworks Prerequisites	<p>If the required prerequisites are not met, the upgrade procedure does not continue. The requirements that are not met are displayed (GUI) or listed (command line). For more information, see <a href="#">Prerequisites</a>.</p> <p>If the .NET prerequisite is not met, you can click the <b>ZENworks</b> link in the description to install the runtime version that is bundled with ZENworks. Ensure that you install Microsoft .NET 4.5 framework and all its latest updates. After .NET is installed, the ZENworks upgrade proceeds.</p> <p><b>NOTE:</b> You must reboot the device after the installation of .NET 4.5.</p>

---

Upgrade Information	Explanation
Upgrade Type	<p>Select <b>Yes</b> if this is the first Primary Server in the Management Zone to be upgraded, else select <b>No</b>.</p> <p>If you select <b>Yes</b>, you are prompted for the zone administrator credentials.</p> <p>or</p> <p>If you select <b>No</b>, perform the steps listed in <a href="#">Table 2-2, “Upgrade Information - Upgrade of additional Primary Servers,”</a> on page 27.</p>
Database Purging	<p>The time required to complete the upgrade of the first Primary Server depends on the size of the data present in the database. On Primary Servers that are using an Microsoft SQL or Oracle Enterprise database, the upgrade installer checks the size of unwanted inventory data that can be purged. If there are more than 200,000 records to be purged, the Upgrade installer gives an option to purge the database before upgrading the Primary Server. For other database types, if there are less than 200,000 records to be purged, this page does not open.</p> <ul style="list-style-type: none"> <li>◆ <b>Purge the database now:</b> If this option is selected, the wizard will continue with purging the database. After the database is purged, re-initiate the upgrade process.</li> </ul> <p>Configure the following settings for purging:</p> <ul style="list-style-type: none"> <li>◆ <b>Remove the deleted products and components older than x day(s):</b> Specify the number of days after which to purge deleted product and component data. The default value is 180 days.</li> <li>◆ <b>Remove the inventory history data older than x day(s):</b> Specify the number of days after which to purge the inventory history. The default value is 180 days.</li> <li>◆ <b>Remove the Software Application Usage data older than x day(s):</b> Specify the number of days after which to purge the software application usage data collected for Asset Management. The default value is 180 days.</li> <li>◆ <b>Remove the Network Software Usage data older than x day(s):</b> Specify the number of days after which to purge the network software usage data collected for Asset Management. The default value is 180 days.</li> <li>◆ <b>Remove the Web Application Usage data older than x day(s):</b> Specify the number of days after which to purge the Web application usage data collected for Asset Management. The default value is 180 days.</li> </ul> <p><b>IMPORTANT:</b> If the purging process is interrupted, the database might become inconsistent.</p> <ul style="list-style-type: none"> <li>◆ <b>Continue without purging the database:</b> If this option is selected, the wizard continues with the upgrade process.</li> </ul>



Upgrade Information	Explanation
ZENworks Diagnostic Center	<p>Verify the database using ZENworks Diagnostic Center. If any mismatches are found, then error are logged in the ZDC reports.</p> <p>The error reports are available in the following location:</p> <ul style="list-style-type: none"> <li>◆ On Windows: %ZENSERVER_HOME%\logs\migration\zdc\reports</li> <li>◆ On Linux: /var/opt/microfocus/log/zenworks/migration/zdc/reports</li> </ul> <p><b>NOTE:</b> Verify the database before you upgrade the first Primary Server to ZENworks 2020 Update 2. You will not be prompted to verify the database for the subsequent server upgrades.</p>
Pre-Upgrade Tasks	<p>Ensure that you have stopped all ZENworks services on all other Primary Servers. If services are not stopped on other Primary Servers, then you cannot proceed with the upgrade.</p> <p>For Linux servers, ensure that Docker and Docker Compose is installed and their services are enabled and running. For more information, see <a href="#">Prerequisites</a>.</p> <p>Ensure that you have taken complete backup of the ZENworks databases and other important data.</p> <p>After performing the required actions, select the displayed checkboxes .</p>
Pre-upgrade summary	<p>The following fields are displayed in the summary:</p> <p><b>Zone Name:</b> Displays the name of the Management Zone to which this server belongs.</p> <p>To make changes to any information, click <a href="#">Previous</a>.</p>
Upgrading process	<p>The upgrade process takes several minutes, depending on the capabilities of the hardware and size of data in the database.</p>

Upgrade Information	Explanation
Upgrading errors	<p>If there are errors during the upgrade, this page is displayed. For detailed information, see the log files in the following locations. Resolve the errors and restart the upgrade.</p> <p><b>On Windows:</b> You can check the logs in the old Novell file path. When the Upgrade process is re-initiated, then check the logs in the new Micro Focus file paths.</p> <p><b>Novell File Path:</b></p> <ul style="list-style-type: none"> <li>◆ %ZENWORKS_HOME%\logs <ul style="list-style-type: none"> <li>◆ %ZENWORKS_HOME%\logs\ZENworks_Upgrade_&lt;TimeStamp&gt;.log.xml</li> <li>◆ %ZENWORKS_HOME%\logs\loader-messages.log</li> <li>◆ %ZENWORKS_HOME%\logs\system-update-import.log</li> </ul> </li> </ul> <p>%ZENWORKS_HOME%\logs\system-update/&lt;Update GUID&gt;</p> <ul style="list-style-type: none"> <li>◆ %ZENWORKS_HOME%\logs\pre-global-actions.log</li> <li>◆ %WINDOWS_SYSTEM_DRIVE%\tmp\err.log</li> </ul> <p><b>Micro Focus File Path:</b></p> <ul style="list-style-type: none"> <li>◆ %ZENSERVER_HOME%\logs <ul style="list-style-type: none"> <li>◆ %ZENSERVER_HOME%\logs\ZENworks_Upgrade_&lt;TimeStamp&gt;.log.xml</li> <li>◆ %ZENSERVER_HOME%\logs\loader-messages.log</li> <li>◆ %ZENSERVER_HOME%\logs\system-update-import.log</li> </ul> </li> </ul> <p><b>On Linux:</b> You can check the logs in the old Novell file path. When the Upgrade process is re-initiated, then check the logs in the new Micro Focus file paths.</p> <p><b>Novell File Path</b></p> <ul style="list-style-type: none"> <li>◆ /var/opt/novell/log/zenworks <ul style="list-style-type: none"> <li>◆ /var/opt/novell/log/zenworks/ ZENworks_Upgrade_&lt;TimeStamp&gt;.log.xml</li> </ul> </li> </ul> <p>/var/opt/novell/log/zenworks/system-update/&lt;Update GUID&gt;</p> <ul style="list-style-type: none"> <li>◆ /var/opt/novell/log/zenworks/loader-messages.log</li> <li>◆ /var/opt/novell/log/zenworks/system-update-import.log</li> <li>◆ /var/opt/novell/log/zenworks/pre-global-actions.log</li> <li>◆ /tmp/err.log</li> </ul> <p><b>Microfocus File path</b></p> <ul style="list-style-type: none"> <li>◆ /var/opt/microfocus/log/zenworks <ul style="list-style-type: none"> <li>◆ /var/opt/microfocus/log/zenworks/ ZENworks_Upgrade_&lt;TimeStamp&gt;.log.xml</li> </ul> </li> </ul>

Upgrade Information	Explanation
Post-upgrade actions: Run the ZENworks System Status utility	Choose to run the ZENworks System Status utility to launch the ZENworks services heartbeat check before closing the upgrade program. The results are posted in the upgrade log file.
Post Upgrade actions: Run the cleanup Utility	After upgrade, the ZENworks server configuration will be copied from the old Novell file path to the new Micro Focus file path. However, the ZENworks server binaries and old configuration in the old file path is retained during the upgrade process. After verifying whether the upgraded version of the ZENworks Server is working as expected, you can run the cleanup utility provided with the build, to remove the retained server data. For more information, see <a href="#">Running the Cleanup Utility on a Linux or Appliance Server</a> .
Restarting the Server (applicable only for Windows)	<p>Upon a successful upgrade on a Windows Primary Server, you can select between rebooting immediately or later:</p> <ul style="list-style-type: none"> <li>◆ <b>Yes, Restart the System:</b> If you select this option, the server is rebooted to complete the upgrade process.</li> <li>◆ <b>No, I Will Restart the System Myself:</b> If you select this option, the upgrade process finishes when you reboot the server for the next time.</li> </ul> <p><b>IMPORTANT:</b> Reboot the server to complete the upgrade process.</p>
Upgrade completion	<p>The actions you selected previously are performed, including:</p> <ul style="list-style-type: none"> <li>◆ Upgrading the ZENworks database (done when the first Primary Server is upgraded).</li> <li>◆ Upgrading all ZENworks components installed on the Primary Server.</li> <li>◆ Importing System Update into the zone so that you can upgrade the managed devices in the zone.</li> </ul>

**Table 2-2** Upgrade Information - Upgrade of additional Primary Servers

Installation Information	Explanation
Primary Server and Zone Credentials	You are prompted for the details of the Primary Server that is already upgraded, the Zone credentials, and the SSL port number.
ZENworks Database Details	(Conditional) If the device cannot connect to the database through the Primary Server that is already upgraded, you are prompted for the details to connect directly to the database.
Port Number	A few ports that might be blocked by your firewall need to be opened. You can open them now or you can manually open them later.

Installation Information	Explanation
Pre-upgrade summary	<p><b>WARNING:</b> Before the Pre-upgrade summary page is displayed, the ZENworks services will be stopped on the server. If you cancel the upgrade at this time, you will need to restart the ZENworks services manually.</p> <p>The following fields are displayed in the summary:</p> <p><b>ZENworks Home Directory:</b> Displays the location on the Primary Server where the ZENworks software that is being upgraded is installed.</p> <p><b>Zone Name:</b> Displays the name of the Management Zone to which this server belongs.</p>
Upgrading process	<p>The upgrade process takes several minutes, depending on the capabilities of the hardware.</p>
Errors during upgrade	<p>If there are errors during the upgrade, this page is displayed. You must resolve the errors and restart the upgrade. For detailed information, see the log files in the following locations:</p> <p><b>On Windows:</b> You can check the logs in both the old Novell and the new Micro Focus file paths:</p> <p><b>Novell File Path</b></p> <ul style="list-style-type: none"> <li>◆ %ZENWORKS_HOME%\logs <ul style="list-style-type: none"> <li>◆ %ZENWORKS_HOME%\logs\ZENworks_Upgrade_&lt;TimeStamp&gt;.log.xml</li> <li>◆ %ZENWORKS_HOME%\logs\loader-messages.log</li> <li>◆ %ZENWORKS_HOME%\logs\system-update-import.log</li> </ul> </li> <li>%ZENWORKS_HOME%\logs\system-update\&lt;Update GUID&gt; <ul style="list-style-type: none"> <li>◆ %ZENWORKS_HOME%\logs\pre-global-actions.log</li> <li>◆ %WINDOWS_SYSTEM_DRIVE%\tmp\err.log</li> </ul> </li> </ul> <p><b>Micro Focus File Path</b></p> <ul style="list-style-type: none"> <li>◆ %ZENSERVER_HOME%\logs <ul style="list-style-type: none"> <li>◆ %ZENSERVER_HOME%\logs\ZENworks_Upgrade_&lt;TimeStamp&gt;.log.xml</li> <li>◆ %ZENSERVER_HOME%\logs\loader-messages.log</li> <li>◆ %ZENSERVER_HOME%\logs\system-update-import.log</li> </ul> </li> </ul>

Installation Information	Explanation
	<p data-bbox="480 247 1105 275"><b>On Linux:</b> You can check the logs in the following file paths</p> <p data-bbox="480 302 651 329"><b>Novell File Path</b></p> <ul style="list-style-type: none"> <li data-bbox="505 357 956 384">◆ /var/opt/novell/log/zenworks</li> <li data-bbox="558 401 1125 459">◆ /var/opt/novell/log/zenworks/ ZENworks_Upgrade_&lt;TimeStamp&gt;.log.xml</li> </ul> <p data-bbox="480 485 1325 512">/var/opt/novell/log/zenworks/system-update/&lt;Update GUID&gt;</p> <ul style="list-style-type: none"> <li data-bbox="558 529 1317 556">◆ /var/opt/novell/log/zenworks/loader-messages.log</li> <li data-bbox="558 573 1235 632">◆ /var/opt/novell/log/zenworks/system-update- import.log</li> <li data-bbox="558 648 1360 676">◆ /var/opt/novell/log/zenworks/pre-global-actions.log</li> <li data-bbox="558 693 773 720">◆ /tmp/err.log</li> </ul> <p data-bbox="480 745 703 772"><b>Microfocus File Path</b></p> <ul style="list-style-type: none"> <li data-bbox="505 800 1016 827">◆ /var/opt/microfocus/log/zenworks</li> <li data-bbox="558 844 1125 903">◆ /var/opt/microfocus/log/zenworks/ ZENworks_Upgrade_&lt;TimeStamp&gt;.log.xml</li> </ul>
Post-upgrade actions	<p data-bbox="480 930 1375 1016">Before closing the upgrade program, you can run the ZENworks System Status utility to launch a heartbeat check of the ZENworks services. The results are listed in the installation log.</p>
Restarting the Server (applicable only for Windows)	<p data-bbox="480 1045 1375 1104">After the upgrade on a Windows Primary Server, you can select either to reboot immediately or later:</p> <ul style="list-style-type: none"> <li data-bbox="505 1129 1375 1157">◆ <b>Yes, Restart the System:</b> Reboots the server to complete the upgrade process.</li> <li data-bbox="505 1173 1375 1232">◆ <b>No, I Will Restart the System Myself:</b> Completes the upgrade process, when you reboot the server the next time.</li> </ul> <p data-bbox="532 1249 1344 1276"><b>IMPORTANT:</b> You must reboot the server to complete the upgrade process.</p>
Upgrade completion	<p data-bbox="480 1306 1138 1333">The actions you selected previously are performed, including:</p> <ul style="list-style-type: none"> <li data-bbox="505 1358 1317 1417">◆ Upgrading the ZENworks database (done when the first Primary Server is upgraded).</li> <li data-bbox="505 1434 1271 1461">◆ Upgrading all ZENworks components installed on the Primary Server.</li> <li data-bbox="505 1478 1375 1537">◆ Importing System Update into the zone so that you can upgrade the managed devices in the zone.</li> </ul>

## 2.2.2 Using a Command Line to Upgrade a Linux Server

Perform the following on the Primary Server that you want to upgrade from ZENworks 2020 to ZENworks 2020 Update 2:

- 1 Ensure that the upgrade prerequisites are met.
- 2 Start the ZENworks upgrade program, open a Linux terminal, browse to the root of the upgrade media, then enter the following command:

```
./setup.sh --console
```

or

```
./setup.sh -e
```

- 3 Select the language. English is the default language. Select the number corresponding to your language, then press **Enter** to continue.
- 4 Review the introduction, then press **Enter** to continue.

---

**TIP:** Type `back` and press **Enter** to return to a previous installation option to make the changes. Type `quit` to exit the wizard.

---

- 5 To accept the end-user license agreement (EULA), type `1`, then press **Enter**.
- 6 To accept the license agreement, type `1`, then press **Enter**.  
If you disagree, the upgrade wizard quits.
- 7 The Prerequisite check page is displayed. If there are any warning or error messages, resolve the errors, then press **Enter** to continue.
- 8 Type `1` if this is the first Primary Server to be upgraded; otherwise, type `2`, then press **Enter**.
- 9 (Conditional) If you typed `1` in the previous page, you will be prompted for the zone administrator credentials. Specify details, then press **Enter** and continue with [Step 11](#).
- 10 (Conditional) If you typed `2` in the previous page, you will be prompted for the details of the upgraded Primary Server and the zone administrator credentials. Specify the required details, then press **Enter**.
- 11 At the end of the **Enter the zone administrative user's name** line, press **Enter** to accept the default (Administrator), or specify an administrator name, then press **Enter**.
- 12 Specify a password for the administrator, then press **Enter**.
- 13 In the ZENworks licensing page, you have an option to change the ZENworks licensing type. Specify the ZENworks 2020 Update 2 license, and then click Next.
- 14 Stop the ZENworks services on all other Primary Servers, then press **Enter** to stop the services on the local server.  
  
Before the upgrade, you should stop the services on all other Primary Servers in the Management Zone. If services are not stopped on other Primary Servers, then you will not be able to proceed with the upgrade.  
  
Except for the database service, no ZENworks service should be running during the upgrade process.
- 15 Review the pre-upgrade summary, then press **Enter** to continue.  
  
If you are upgrading the other Primary Servers in the Management Zone, the upgrade starts when you press **Enter** in this step.
- 16 When **Upgrade Complete** is displayed, press **Enter** to continue.  
  
If errors are displayed, see the installation logs in the `/var/opt/novell/log/zenworks` or `/var/opt/novell/log/zenworks/systemupdate/<Update GUID>` file.  
  
If while re-running the upgrade process, errors are displayed, then you can also check the logs in the Micro Focus path. For example, `/var/opt/microfocus/log/zenworks`

17 Do any of the following to verify that ZENworks 2020 Update 2 is running:

- ◆ **Check the Linux services by using the specific service commands**

For SLES 12, or later servers run the following commands:

```
systemctl status microfocus-zenserver.service
```

```
systemctl status microfocus-zenloade.service
```

If the services are not running, run the following commands to start the ZENworks services:

```
systemctl start microfocus-zenserver.service
```

```
systemctl start microfocus-zenloader.service
```

- ◆ **Check the Linux services by using the configuration command**

On the server, run the following commands:

```
microfocus-zenworks-configure -c SystemStatus
```

ZENworks services and their status are listed.

To start the services, run the following command:

```
microfocus-zenworks-configure -c Start
```

- ◆ **Run ZENworks Control Center**

Use the following URL to open the ZENworks Control Center in a web browser on any device in your network:

```
https://<DNS name of the Primary_Server>/zenworks
```

or

```
https://<IP address of the Primary_Server>/zenworks
```

18 To upgrade another Primary Server, repeat from [Step 2](#).

For information on the post-upgrade tasks, see “[Completing Post-Installation Tasks](#)” in the [ZENworks Server Installation](#).

---

**NOTE:** If you are using ZENworks Reporting, then after upgrading the zone to ZENworks 2020 Update 2, ensure that you reconfigure ZENworks reporting. For more information, see [Reconfiguring ZENworks Reporting Appliance](#) in the [ZENworks Reporting Appliance Deployment and Administration Reference](#).

---

## 2.2.3 Upgrading the ZENworks 2020 Update 2 Lighthouse build to ZENworks 2020 Update 2 FCS

If you have deployed ZENworks 2020 Update 2 Lighthouse build, and intend to upgrade the zone to ZENworks 2020 Update 2 FCS, then perform the following steps:

## On Linux/Appliance

**On Appliance:** If you have deployed ZENworks 2020 Update 2 Lighthouse Appliance build on Microsoft Hyper-V, XEN on SLES, or Citrix XenServer and want to update to the ZENworks 2020 Update 2 FCS build, please contact Micro Focus Customer Support, and then perform the following steps.

- 1 Create a temporary directory (`mntdir`) in the `/var/tmp` or `/var/opt/microfocus/zenworks/tmp` directory.
- 2 Mount the ISO in the temporary directory that was created.
- 3 After mounting the ISO, ensure that you restart the ZENloader service.
- 4 Go to the mount directory (`mntdir`).

Example:

- ◆ If you have mounted to `/var/tmp/` location then go to `/var/tmp/mntdir`.
- ◆ If you have mounted to `/var/opt/microfocus/zenworks/` location then go to `/var/opt/microfocus/zenworks/mntdir`

- 5 Run the `zman sui` Common command.

When prompted, specify the administrator credentials, and you will be prompted for the root password.

The system update will be imported to the zone, and to track the status in ZCC, go to Configuration > System Updates.

Next follow update deployment steps, see [Deploying Updates](#) in the [ZENworks System Updates Reference](#).

## On Windows

- 1 Mount the ZENworks 2020 Update 2 ISO.
- 2 After mounting the ISO restart the ZENloader service.
- 3 Open the command prompt and go to the `<mount_location>`.
- 4 Run the `zman sui` Common command.

When prompted, specify the administrator credentials.

The system update will be imported to the zone, and to track the status in ZCC, go to Configuration > System Updates.

Next follow update deployment steps, see [Deploying Updates](#) in the [ZENworks System Updates Reference](#).



## 2.2.4 Running ZENworks Diagnostic Center to Verify the Database Schema

The first time you upgrade any Primary Server to ZENworks 2020 Update 2, you must verify the database schema. Do not perform this procedure for the subsequent server upgrades.

- ♦ [“Verifying an Embedded Database Schema” on page 33](#)
- ♦ [“Verifying an External Database Schema” on page 33](#)

### Verifying an Embedded Database Schema

1 At the Primary Server’s console prompt, run the following commands:

- ♦ **On Windows**

```
cd to MEDIA_ROOT\Common\tools\zdc
zdc_verifyDB.bat
```

- ♦ **On Linux**

```
cd to MEDIA_PATH/Common/tools/zdc
./zdc_verifyDB
```

ZENworks Diagnostic Center runs the diagnostic tests and generates the results in HTML format.

On a Windows Primary Server, the reports are stored in the following location:

```
%ZENSERVER_HOME%\logs\zdcreports\%SESSION%
```

```
/var/opt/microfocus/log/zenworks/zdcreports
```

On a Linux Primary Server the reports are stored in the following location:

```
/var/opt/microfocus/log/zenworks/zdcreports
```

To view the reports, open `index.html`, located in the `report` directory.

The complete log of diagnostic tests is stored in the following locations:

On Windows:

```
%ZENSERVER_HOME%\logs\zdcreports\zdc_zen11_verify_%SESSION%.log
```

On Linux: `/var/opt/microfocus/log/zenworks/zdcreports`

### Verifying an External Database Schema

Perform the following steps to verify an external database schema such as external PostgreSQL, Microsoft SQL, or Oracle database schema:

1 At the Primary Server’s console prompt, run the following commands:

- ♦ **On Windows**

```
cd to MEDIA_PATH/Common/tools/zdc
zdc_verifyDB.bat -d check
```

- ♦ **On Linux**

```
cd to MEDIA_PATH/Common/tools/zdc
./zdc_verifyDB -d check
```

---

**NOTE:** The `-d check` parameter must be used only when you migrate the database from one device to another. Do not use the `-d check` parameter if the database is upgraded on the same device.

---

2 Specify the type of database. Type the relevant number based on the database type:

- ◆ (1) PostgreSQL
- ◆ (2) MS-SQL
- ◆ (3) Oracle

3 Specify the database details, based on the selected database (Microsoft SQL, PostgreSQL, or Oracle).

---

**NOTE:** If you are using an Microsoft SQL database, based on the type of authentication you choose to log in, enter the user name in the relevant format:

- ◆ Windows Authentication: `<name>@<domain>`
  - ◆ SQL Server Authentication: `<name>`
- 

4 (Conditional) If the database is Remote PostgreSQL, enter the Database Engine Name.

ZENworks Diagnostic Center runs the diagnostic tests and generates the results in HTML format. On a Windows Primary Server the reports are stored in the following location:

```
%ZENSERVER_HOME%\logs\zdcreports\%SESSION%
```

On a Linux Primary Server the reports are stored in the following location:

```
/var/opt/microfocus/log/zenworks/zdcreports
```

To view the reports, open `index.html`, located in the `report` directory.

The complete log of diagnostic tests is stored in the following locations:

On Windows:

```
%ZENSERVER_HOME%\logs\zdcreports\zdc_zen11_verify_%SESSION%.log
```

On Linux: `/var/opt/microfocus/log/zenworks/zdcreports`

## 2.2.5 Running the Cleanup Utility

After upgrade, the ZENworks server configuration will be copied from the old Novell file path to the new Micro Focus file path. However, the ZENworks server binaries and old configuration in the old file path is retained during the upgrade process. After verifying whether the upgraded version of the ZENworks Server is working as expected, you can run the cleanup utility provided with the build, to remove the retained server data. The topics covered in this section are as follows:

- ◆ [“Viewing the Renamed Services and File Locations on a Linux or Appliance Server” on page 35](#)
- ◆ [“Running the Cleanup Utility on a Linux or Appliance Server” on page 36](#)
- ◆ [“Viewing the Renamed Services and File Locations on a Windows Server” on page 37](#)
- ◆ [“Running the Cleanup Utility on Windows Server” on page 38](#)

## Viewing the Renamed Services and File Locations on a Linux or Appliance Server

After a successful upgrade, you can now go ahead and view the changes introduced in this release:

- ♦ [“New File Path for ZENworks Server Data” on page 35](#)
- ♦ [“Renamed Configure Actions” on page 35](#)
- ♦ [“Renamed Services” on page 36](#)

### New File Path for ZENworks Server Data

Example:

- ♦ **Log Files:** The log files will now be available in the new Micro Focus path (`/var/opt/microfocus/log/zenworks`).

The log files in the old Novell path (`/var/opt/novell/log/zenworks`) will also be retained. These files will not be deleted even after you run the cleanup utility.

---

**NOTE:** All new server related log files that are generated after the upgrade, will be available only in the new Micro Focus file path and not in the old Novell file path.

---

- ♦ **Conf Files:** The configuration files for only the ZENworks Server will now be available in the new Micro Focus path (`/etc/opt/microfocus/zenworks`).

The configuration files for both the server and the agent will also be retained in the old Novell path (`/etc/opt/novell/zenworks`). When you run the cleanup utility, the configuration files related to the ZENworks Server will be deleted from the old path. However, the files related to the ZENworks agent will be retained in the old path.

- ♦ **Libraries:** The libraries for only the ZENworks Server will now be available in the new Micro Focus path (`/opt/microfocus/zenworks`).

The libraries for both the server and the agent will also be retained in the old Novell path (`/opt/novell/zenworks`). When you run the cleanup utility, the libraries related to the ZENworks Server will be deleted from the old path.

### Renamed Configure Actions

Configure actions have been renamed from Novell to Micro Focus. For example, the configure action `novell-zenworks-configure -c CalibrateMemoryConfigureAction` is now renamed to `microfocus-zenworks-configure -c CalibrateMemoryConfigureAction`. Configure actions that follow the Novell naming convention have been deprecated in this release and will be available along with the Configure actions that follow the Micro Focus naming convention.

## Renamed Services

ZENworks Server services have been renamed from Novell to Micro Focus. For example, `novell-zenserver.service` is renamed to `microfocus-zenserver.service`.

Similarly, services such as `novell-zenloader.service` and `novell-zenjoinproxy.service` are renamed to `microfocus-zenloader.service` and `microfocus-zenjoinproxy.service`, respectively

However, the old service names will still be displayed but will be inactive. You can run the cleanup utility to remove the old server services.

Therefore, while using the `systemctl` commands to start or stop services, ensure that you use the renamed services in the command.

---

**NOTE:** Some services such as `novell-zenworks-xplatzmd.service` will not be renamed and will retain the old naming convention even after running the cleanup utility.

The service related to the embedded database for PostgreSQL will also retain the Novell naming convention, that is, the `zenpostgresql.service` will remain enabled and will not be removed during cleanup.

---

## Running the Cleanup Utility on a Linux or Appliance Server

The cleanup utility enables you to remove the old ZENworks configuration data that is retained in the Novell file path and the old versions of the ZENworks Server services that are inactive. Run the cleanup utility only after verifying whether the upgraded server is working as expected. The following are retained after running the cleanup utility:

- ◆ ZENworks agent related data such as the configuration files and libraries will be retained in the old Novell file path.
- ◆ The ZENworks System Updater Service (ZeUS) folder will be retained in the `/opt/novell/zenworks/ZeUS` path.
- ◆ The System Update and other log files will be retained in the `/var/opt/novell/log/zenworks` path.
- ◆ Services related to the ZENworks agent, that is, `novell-zenworks-xplatzmd.service`, will be retained with the Novell naming convention.
- ◆ The service related to embedded PostgreSQL, that is, `zenpostgresql.service`, will not be renamed.

To run the clean up utility, execute the following command as a root user and confirm whether you want to proceed with the cleanup:

```
/opt/microfocus/zenworks/bin/zen-legacy-cleanup.sh
```

To run the clean up utility silently without user interaction, add the `-s` flag into the command.

The logs for this cleanup utility can be found at the `/var/opt/microfocus/log/zenworks/zen-legacy-cleanup_<timestamp>.log` location.

After running the command, you can verify whether the files in the old file path `/opt/novell/zenworks/` and old server services that follow the Novell naming convention, are removed from the server or not.

---

**NOTE:** When you run the cleanup utility, Sybase related files will be retained, which can be removed manually after verifying whether the upgraded ZENworks Server is working as expected.

If you have migrated the Sybase database to any other database using the database migration tool, the database files, services, and Sybase packages might be retained in the Primary Server. To clean-up the data, run the following scripts on the Primary Server that had the Sybase database.

- ♦ **On Linux/Appliance:** Run the script available in: `/opt/microfocus/zenworks/install/downloads/tools/cleanupSybase.sh`.

---

## Viewing the Renamed Services and File Locations on a Windows Server

After a successful upgrade, you can now go ahead and view the changes introduced in this release:

- ♦ [“New File Path for ZENworks Server Data” on page 37](#)
- ♦ [“Renamed Services” on page 38](#)
- ♦ [“Introduction of a New Environment Variable” on page 38](#)
- ♦ [“Renamed Configure Actions” on page 38](#)

### New File Path for ZENworks Server Data

Example:

- ♦ **Log Files:** The log files will now be available in the new Micro Focus path. Example: `C:\Program Files (x86)\Micro Focus\ZENworks\logs`.

The log files in the old Novell path will be retained. Example: `C:\Program Files (x86)\Novell\ZENworks\logs`. These files will not be deleted after you run the cleanup utility.

---

**NOTE:** All new server related logs files that are generated after the upgrade, will be available only in the new Micro Focus file path and not in the old Novell file path.

---

- ♦ **Libraries:** The libraries for only the ZENworks Server will now be available in the new Micro Focus path. Example: `C:\Program Files (x86)\Micro Focus\ZENworks\lib`.

The libraries for both the server and the agent will also be retained in the old Novell path. Example: `C:\Program Files (x86)\Novell\ZENworks\lib`. When you run the cleanup utility, the libraries related to the ZENworks Server will be deleted from the old path.

## Renamed Services

ZENworks Server services have been renamed from Novell to Micro Focus. Example: Novell ZENworks Join Proxy is renamed to Microfocus ZENworks Join Proxy.

Similarly, the service Novell ZENworks Loader is renamed to Microfocus ZENworks Loader, Novell ZENworks Services Monitor is renamed to Microfocus ZENworks Services Monitor and Novell ZENworks Server server is renamed to Microfocus ZENworks Server.

However, the services that use the old Novell naming convention will still be displayed but will be disabled. You need to run the cleanup utility to remove these services.

---

**NOTE:** Services such as the Novell ZENworks Agent Service will remain enabled and will retain the Novell naming convention after running the cleanup utility.

The service related to the embedded database for PostgreSQL will also retain the Novell naming convention, that is, the Novell ZENworks Embedded Datastore-PostgreSQL will remain enabled and will not be removed during cleanup.

---

## Introduction of a New Environment Variable

A new environment variable %ZENSERVER\_HOME% has been introduced in this release that points to the new Micro Focus file path C:\Program Files (x86)\Micro Focus\ZENworks. The existing environment variable %ZENWORKS\_HOME% is still applicable to access the ZENworks agent data, which is retained in the Novell file path.

## Renamed Configure Actions

Configure actions have been renamed from Novell to Micro Focus. For example, the configure action novell-zenworks-configure -c CalibrateMemoryConfigureAction is now renamed to microfocus-zenworks-configure -c CalibrateMemoryConfigureAction. Configure actions that follow the Novell naming convention have been deprecated in this release and will be available along with the Configure actions that follow the Micro Focus naming convention.

## Running the Cleanup Utility on Windows Server

The cleanup utility enables you to remove the old ZENworks Server data that is retained on the Novell file path and the old versions of the ZENworks Server services that are disabled. Run the cleanup utility only after verifying whether the upgraded ZENworks Server is working as expected. The following are retained after running the cleanup utility:

- ♦ ZENworks agent related data such as configuration files and libraries will be retained in the Novell file path. Example: C:\Program Files (x86)\Novell\ZENworks.
- ♦ The log files will be retained in the Novell file path. Example: C:\Program Files (x86)\Novell\ZENworks\logs.
- ♦ The ZENworks System Updater Service (ZeUS) folder will be retained in the Novell file path. Example: C:\Program Files (x86)\Novell\ZENworks\ZeUS.

- ◆ Services related to the ZENworks agent will retain the Novell naming convention, that is, the Novell ZENworks Agent Service will remain enabled. They will not be removed during cleanup.
- ◆ The service related to the embedded database for PostgreSQL will also retain the Novell naming convention, that is, the Novell ZENworks Embedded Datastore-PostgreSQL will be in a enabled state. It will not be removed during cleanup.

To cleanup the retained data, run the cleanup utility as an administrator. The utility is available at the following location:

```
%ZENSERVER_HOME%\bin\ZENLegacyCleanup.exe
```

The logs for this cleanup utility can be found at the

```
%ZENSERVER_HOME%\logs\LegacyUninstall\ZENLegacyCleanup_<timestamp>.log
```

location.

After running the command, you can verify whether the ZENworks Server data in the old Novell file path and the ZENworks Server services that follow the Novell naming convention, are removed from the server or not.

---

**NOTE:** When you run the cleanup utility, Sybase related files will be retained, which can be removed manually after verifying whether the upgraded ZENworks Server is working as expected.

If you have migrated the Sybase database to any other database using the database migration tool, the database files, services, and Sybase packages might be retained in the Primary Server. To clean-up the data, run the following scripts on the Primary Server that had the Sybase database.

- ◆ **On Windows:** Open the PowerShell console and run the script available in the ZENWORKS\_HOME/install/downloads/tools/cleanupSybase.ps1 location.

Ensure that you DO NOT USE COMMAND PROMPT.

---

## 2.2.6 Post-Upgrade Configurations

After successfully upgrading the Primary Servers, perform the following post-upgrade configurations:

1. Configure the system update entitlement by activating ZENworks licenses. For more information on licensing, see [TID 7024521](#).

---

### NOTE

- ◆ After licensing ZENworks, ensure that you check for updates in ZENworks System Update page.
- 
2. Using the appliance key from Micro Focus Customer Center, register and then configure Online Updates. For more information, see:
    - ◆ [Obtaining Licenses from the Micro Focus Customer Center](#)
    - ◆ [Online Update](#)
  3. Ensure that you verify the version of ZENworks in ZENworks Control Center ([Configuration > Server Hierarchy](#)).

4. Ensure that the status of System Update is successful.
5. Ensure that you run the latest ZDC to verify the schema. For more information, see [ZENworks Diagnostic Center](#).
6. (Conditional) Ensure that you apply the latest Tuxera NTFS driver or imaging updates. For more information, see [Adding Tuxera Driver for ZENworks Imaging](#).
7. Ensure that you configure reporting to get the newly available domains. For more information, see [ZENworks Reporting Configuration](#).
8. (Conditional) If ZENworks is connected to ZENworks Reporting Server, then ensure that you upgrade the Reporting database domain to the upgraded ZCM Database. For more information, see [Reconfiguring ZENworks Reporting Appliance in ZENworks Reporting Appliance Deployment and Administration Reference](#).
9. Ensure that the ZooKeeper service is up and running at all times to enable proper functioning of various ZENworks components such as the ZENworks Loader services and the Vertica database. To verify the status of the ZooKeeper service, see the Diagnostics page in ZCC. For more information on the ZooKeeper component, see [ZooKeeper](#) in the [Vertica Reference Guide](#).

---

**NOTE:** In case of multiple Primary servers in the zone, by default, the Zookeeper service is and active on the first upgraded Primary Server node.

---

If the Primary Servers in your zone are unable to communicate with the ZooKeeper service due to firewall restrictions, you can run the following configure action to open the ZooKeeper ports: You also need to ensure that the firewall allows client connections from other Primary Servers to the ZooKeeper services on port 6789. If the Primary Servers in your zone are unable to access the ZooKeeper service, then to open the ports, you can run the following Configure action on the server in which ZooKeeper is enabled.

```
microfocus-zenworks-configure -c ClusterFirewallConfigureAction -  
Doperation=add -Dservice=zookeeper
```

However, if the Primary Server that is within the DMZ is unable to access the ZooKeeper service within the corporate network, then you need to manually open the port 6789 in the corporate firewall.

For more information on the ZooKeeper ports, see [ZENworks 2020 TCP and UDP Ports](#).

10. After upgrade, the ZENworks server configuration will be copied from the old Novell file path to the new Micro Focus file path. However, the ZENworks server binaries and old configuration in the old file path is retained during the upgrade process. After verifying whether the upgraded version of the ZENworks Server is working as expected, you can run the cleanup utility provided with the build after a couple of weeks, to remove the retained server data.

For more information, see [Running Cleanup Utility on a Linux or Appliance Server](#) or [Running the Cleanup Utility on Windows Server](#).

11. (Optional) When you run the cleanup utility, Sybase related files will be retained, which can be removed manually after verifying whether the upgraded ZENworks Server is working as expected.



If you have migrated from the Sybase database to any other database using the database migration tool, the database files, services, and Sybase packages might be retained in the Primary Server. To cleanup the data, run the following scripts on the Primary Server that had the Sybase database.

- ♦ **On Linux/Appliance:** Run the script available in: `/opt/microfocus/zenworks/install/downloads/tools/cleanupSybase.sh`
- ♦ **On Windows:** Open the PowerShell console and run the script available in the `ZENWORKS_HOME/install/downloads/tools/cleanupSybase.ps1` location.  
On Windows, ensure that you DO NOT USE COMMAND PROMPT.

## 2.3 Troubleshooting

If the ZENworks Server Upgrade fails, you must rectify the problem and re-run the ZENworks Upgrade Installer.

- ♦ You must re-run the Upgrade Installer on the same server where the upgrade was started.
- ♦ If the upgrade fails during the post-package upgrade database action, then on re-running and after zone authentication, the pre-upgrade Summary page displays and the upgrade proceeds to perform the database actions.
- ♦ If Embedded PostgreSQL database is used, ensure that the `.dbR` and `.logR` files are deleted from the database folder before re-running the Upgrade Installer.

The following sections provide solutions to the problems that you might encounter while upgrading the ZENworks Primary Server:

- ♦ [“Externally mounted content-repo is not recognized” on page 42](#)
- ♦ [“ZENworks upgrade fails as the PostgreSQL Engine upgrade failed” on page 43](#)
- ♦ [“Upgrade completes with an error on a Linux Primary Server” on page 43](#)
- ♦ [“Upgrading to ZENworks 2020 fails on Windows Primary Server” on page 43](#)
- ♦ [“The MDM device displays inconsistent status after upgrading to ZENworks 2020 Update 2” on page 44](#)
- ♦ [“System Update Failed Due to Pending Reboot Error” on page 44](#)
- ♦ [“The Inventory-Only Agent \(IOA\) System Update Fails on SLED 15 SP1 devices” on page 44](#)
- ♦ [“During the Upgrade of any Windows Primary Server, Windows Explorer Automatically Restarts a Few Times” on page 45](#)
- ♦ [“When ZENworks Upgrade is launched, if the database is executing any transactions, it might conflict with the upgrade process” on page 45](#)
- ♦ [“While using an Oracle database, during the upgrade or database creation, the TNS error message is displayed” on page 46](#)
- ♦ [“While using an MS-SQL database, during the upgrade or database creation, there are connection issues” on page 46](#)
- ♦ [“Incorrect values displayed for the inventory records to be pruned” on page 47](#)
- ♦ [“An error occurs when you delete a folder with a long name” on page 47](#)
- ♦ [“The ZENworks schema fails to upgrade due to collation incompatibility in MS SQL database” on page 47](#)

- ♦ [“The upgrade XML log file is not displayed properly in Google Chrome and Firefox” on page 48](#)
- ♦ [“On a Linux Primary Server, the legacy Novell services are listed in start configure action” on page 48](#)
- ♦ [“ZENworks Primary Server Upgrade fails with the 'Zulu Platform x64 Architecture has stopped working' error” on page 49](#)

## Externally mounted content-repo is not recognized

**Explanation:** Externally mounted content-repo is not recognized by ZENLoader after upgrading to ZENworks 2020 Update 2. Hence, rebuilding is never completed.

**Action:** While upgrading ZENworks 2020 Update 1 and earlier versions to ZENworks 2020 Update 2, ZENworks might not function properly, after upgrade, if you have content-repo as a symbolic link to a folder that is outside the ZENworks folder structure.

For example, if the content is available in `/var/my-external-content-repo` and `/var/opt/novell/zenworks/content-repo` points to that directory, then it might not work.

Hence, ensure that you move the `/var/my-external-content-repo` to a different partition and mount it to `/var/opt/novell/zenworks/content-repo`.

You can store your data on a local mount or on a network share such as NFS, SMB, or CIFS and mount the share in your `content-repo` directory to access your data.

Let us assume that `/dev/sdb` is a partition on which you are planning have the content-repo, perform the following steps:

- 1 Stop all the ZENworks services.
- 2 Create a directory by running `mkdir /tmp/temp-mount`
- 3 Mount the partition: `mount </dev/sdb> /tmp/temp-mount`
- 4 Move the content-repo by using `mv /var/my-external-content-repo/* /tmp/temp-mount`
- 5 Unmount the directory by using `umount /tmp/temp-mount`
- 6 Remove the directory by running `rmdir /tmp/temp-mount`
- 7 Remove the symbolic link by running `rm /var/opt/microfocus/zenworks/content-repo/`
- 8 Create a directory by running the `mkdir /var/opt/microfocus/zenworks/content-repo/` command
- 9 `mount </dev/sdb> /var/opt/microfocus/zenworks/content-repo`. Ensure that this step is performed automatically by adding an entry in the `/etc/fstab` file.  
 Example: `//localhost/zenshare /var/opt/microfocus/zenworks/content-repo cifs username=root,password=rootpass 0 0`
- 10 To verify, run `ls /var/opt/microfocus/zenworks/content-repo`

If the command lists the content and images folder, then the content-repo is configured successfully.

- 11 Run `permissions.sh`
- 12 Start all the ZENworks services.

## ZENworks upgrade fails as the PostgreSQL Engine upgrade failed

**Explanation:** While upgrading ZENworks, the ZENworks upgrade fails if the PostgreSQL engine upgrade failed. This might be because the PostgreSQL service was in an inconsistent state before the upgrade was initiated.

**Action:** If the *Database Service Creation (dbsvc) failed with return code: 2* exception is logged in the Upgrade log, then open `zen20u2_upgrade_status` file present at `/etc/opt/novell/zenworks` on Linux and `%ZENWORKS_HOME%\conf` on Windows and remove **POSTGRES\_ENGINE\_UPGRADE = stop service** line from the file. Start the embedded database service, and then re-trigger the upgrade.

The workaround should be performed only in case of stop service failure. However, this workaround is not recommended for failure at other stages.

## Upgrade completes with an error on a Linux Primary Server

**Explanation:** An explanation of the message.

**Possible Cause:** When you upgrade a Linux Primary Server, the upgrade could complete with an error. However, this could be a false alarm and the upgrade could be successful.

**Troubleshooting:** Open the Upgrade log and check whether the following statement is logged:

*"![CDATA[**Docker service check failed: Format specifier '%s'**]]. Severity is CDATA[8]]"*

Search for the number of instances of *"![CDATA[8]]"* in the upgrade log. If there is only one instance, along with the above statement, then the upgrade is successful. Please verify the same by logging into ZCC.

## Upgrading to ZENworks 2020 fails on Windows Primary Server

**Explanation:** While upgrading the Windows Primary Server to ZENworks 2020, the upgrade fails.

**Action:** Perform the following steps:

1. If the server upgrade has already failed, then run the following command as a super user:

```
icacls "%zenworks_home%\cache" /remove:d Users
```

2. After running the command, retry the upgrade using the ZENworks 2020 Media Upgrade (ISO).

## The MDM device displays inconsistent status after upgrading to ZENworks 2020 Update 2

Source: ZENworks

Explanation: When you apply ZENworks 2020 Update 2 on an MDM device that was enrolled in ZENworks 2020 or 2020 Update 1 (MDM only), the System Update device status displays Update Not Applicable.

Action: None

After updating all the devices in the zone, you can ignore the MDM devices to baseline the update.

## System Update Failed Due to Pending Reboot Error

Source: ZENworks

Explanation: While deploying the system update, the system will restart multiple times. Even after shutting down the system, the system update failed and displayed the pending reboot error.

Action: It is recommended that you restart or reboot the device after updating the device. On the latest Windows devices, due to the Fast Startup mode, shutting down and starting is not considered a device reboot. Hence, you need to restart or reboot the device or disable the “Fast Startup” mode.

## The Inventory-Only Agent (IOA) System Update Fails on SLED 15 SP1 devices

Source: ZENworks

Explanation: When you deploy an Inventory-Only Agent (IOA) system update on SLED 15 devices using the ‘zac su’ command, the system update might fail. This might be because the ‘at’ package might not be installed on the SLED 15 devices, by default.

To verify this, the Inventory-Only Agent (IOA) users or administrators can check the zmd-messages.log file and check for the **‘Cannot run program “at”: error=2, No such file or directory’** error.

Action: If the ‘at’ package is not installed on the Inventory-Only Agent (IOA) device, then install the ‘at’ command using the zypper command or other tools. After installing the ‘at’ command, rerun the zac su command.

In case the zypper command fails to identify the ‘at’ package, we can install the following RPMs:

The RPMs can be downloaded from <https://rpmfind.net/linux/rpm2html/search.php>

1. Search for ‘libHX28’ and download the rpm applicable to your OS platform.

Example: libHX28-3.22-lp150.1.7.x86\_64.rpm

2. Search for ‘libfl2’ and download the rpm applicable to your OS platform.

Example: libfl2-2.6.4-1p150.2.48.x86\_64.rpm

3. Search for 'at' and download the rpm applicable to your OS platform.

Example: at-3.1.20-1p150.2.27.x86\_64.rpm

## During the Upgrade of any Windows Primary Server, Windows Explorer Automatically Restarts a Few Times

**Explanation:** During the upgrade of any Windows Primary Server, Windows Explorer automatically restarts a few times and the command prompt window with the following message is automatically launched:

```
For each prompt presented, press 'enter' to accept the
<default> value, type 'back' to return to the previous
action, or type 'quit' to exit.
```

**Action:** Ignore the messages.

## When ZENworks Upgrade is launched, if the database is executing any transactions, it might conflict with the upgrade process

**Source:** ZENworks; Upgrade

**Explanation:** When the ZENworks Upgrade is launched, if the database is executing any transactions, it might conflict with the upgrade process.

**Action:** Kill the database session that conflicts with the upgrade process. Perform the following steps, to kill a database session:

- 1 Log in to the database as a system user and launch the SQL client.
- 2 Execute one of the following scripts, based on the database type:

◆ Oracle:

```
select 'ALTER SYSTEM KILL SESSION
''||SID||','||SERIAL#||'';' AS "Drop
Query",b.sql_text,a.* from gv$session a, gv$sql b
where (case when a.sql_id is null then a.prev_sql_id
else a.sql_id end)=b.sql_id and a.program='JDBC Thin
Client' and a.logon_time< (sysdate-3/60/24) and
a.username='<<ZENWORKSUSER>>';
```

**Where:**

ZENWORKSUSER is the ZENworks database user name.

◆ MS SQL:

```
select 'KILL '+cast(spids as varchar(100)) as "Drop
Query", r.text,s.* from sys.sysprocesses s cross
apply sys.dm_exec_sql_text (sql_handle) r where
s.program_name='jTDS' and s.spid!=@@spid and
s.login_time < dateadd(minute,-3,getdate()) and
s.loginame='<<ZENWORKSUSER>>';
```

**Where:**

ZENWORKSUSER is the ZENworks database user name.

- ◆ SQL Anywhere:

```
SELECT 'Drop connection '+cast(sa_conn_info.Number
as varchar(100))+';' as "Drop Query",
sa_conn_info.Number AS connection_number, DB_NAME(
DBNumber ) AS database_name, sa_conn_info.name AS
connection_name, sa_conn_info.userid,
CONNECTION_PROPERTY( 'LoginTime', Number ) as "Login
Time", CONNECTION_PROPERTY( 'LastStatement', Number
) As "Query" FROM sa_conn_info() where
sa_conn_info.Number != @@spid and
CONNECTION_PROPERTY( 'LoginTime', Number ) <
dateadd(minute,-3,getdate()) and
userid='<<ZENWORKSUSER>>';
```

Where

ZENWORKSUSER is the ZENworks database user name.

## While using an Oracle database, during the upgrade or database creation, the TNS error message is displayed

Source: ZENworks; Upgrade

Explanation: While using an Oracle database during the upgrade or database creation, you get an error message: **TNS:listener could not find available handler with matching protocol stack.**

Action: Increase the maximum load for dedicated connections, which is determined by the PROCESSES parameter. If the issue persists, contact Micro Focus Customer Support.

## While using an MS-SQL database, during the upgrade or database creation, there are connection issues

Source: ZENworks; Upgrade

Explanation: While using an MS-SQL database, during the upgrade or database creation, there are connection issues with the following error message:

```
org.hibernate.exception.JDBCConnectionException: Cannot
open connection
Caused by: java.sql.SQLException: I/O Error: Connection
reset
Caused by: java.net.SocketException: Connection reset
```

Action: Run `select * from sys.configurations where name='user connections'`

By default, the maximum connection is 32,767. You can adjust it to *Number of Primary Servers \* 200*.

For more information on how to configure the user connections, see <http://technet.microsoft.com/en-us/library/ms187030.aspx>.

Check whether the MS-SQL server has high CPU utilization and database server load. Contact Micro Focus Customer Support for further assistance.

## Incorrect values displayed for the inventory records to be pruned

Source: ZENworks; Upgrade

Explanation: When you opt for pruning in the Upgrade wizard, the number of records specified for deletion is displayed in the Pre-prune summary page.

For example, if you have marked 8,000,000 records out of the total 10,000,000 records for pruning, then 8,000,000 of 10,000,000 is displayed in the **number of records specified for deletion** field.

After successful pruning, when you relaunch the Upgrade wizard for pruning, the Database Pruning page displays an incorrect value in the **Total number of records found to be deleted** field.

For example, if 8,000,000 inventory records have been deleted out of 10,000,000 inventory records, then the ideal value to be displayed in the **Total number of records found to be deleted** field is 200,000.

Currently, an incorrect value is displayed. As a result, there is a mismatch in the values displayed for deleted Inventory records and for Inventory records that are yet to be deleted.

Action: There is no workaround.

## An error occurs when you delete a folder with a long name

Source: ZENworks; Upgrade

Explanation: In a ZENworks zone that uses an SQL Server database, when you try to delete a ZENworks object (for example, device or folder) that has a name which exceeds 900 bytes, you will receive the following error:

```
com.novell.zenworks.datamodel.exceptions.InternalDataModelException: org.hibernate.exception.GenericJDBCException: Operation failed. The index entry of length 912 bytes for the index 'idx_zZENObject_Name' exceeds the maximum length of 900 bytes.
```

Action: Ensure that the length of ZENworks Object names in the zone does not exceed 900 bytes. For more information, see <https://technet.microsoft.com/en-us/library/ms191241%28v=sql.105%29.aspx>.

## The ZENworks schema fails to upgrade due to collation incompatibility in MS SQL database

Source: ZENworks; Upgrade

Explanation: The ZENworks schema fails to upgrade if the MS SQL server and audit database collations are incompatible.

Action: Execute the following SQL queries on both databases (ZENworks and audit) to verify database collation compatibility:

- ♦ SQL Query to get Database Collations:

```
SELECT collation_name FROM sys.databases WHERE name = db_name();
```

- ♦ SQL Query to get Database columns Collations:

```
select distinct collation_name from information_schema.columns where collation_name is not null;
```

Share the upgrade logs and queries output with the Micro Focus customer support for further analysis.

## The upgrade XML log file is not displayed properly in Google Chrome and Firefox

Source: ZENworks; Upgrade

Explanation: When you try to view the upgrade XML log file in Google Chrome and Firefox, the log file was not displayed properly.

Action: To view the log file in a browser, run the following configure action:

```
microfocus-zenworks-configure -c
```

```
ConvertLogToHTMLConfigureAction -DlogFile=<LogFilePath>
```

The configure action converts the XML log file to HTML and opens the log file in a web browser.

Alternatively, you can view the log file using any text editor.

## On a Linux Primary Server, the legacy Novell services are listed in start configure action

Source: ZENworks; Upgrade

Explanation: After upgrading to ZENworks 2020 Update 2 on a Linux Primary Server, when you run the following command:

```
novell-zenworks-configure -c Start
```

The legacy Novell services are listed and not the new Micro Focus services. If you try to start, stop, or restart services, an exception error is displayed.

Action: Log out of the Linux server and then log in again. Open a new terminal window and run the following command:

```
novell-zenworks-configure -c Start
```

The new Micro Focus services are now listed. You can start, stop, or restart the services.



## ZENworks Primary Server Upgrade fails with the 'Zulu Platform x64 Architecture has stopped working' error

Source: ZENworks; Upgrade

Explanation: While upgrading ZENworks 2020 or Update 1 Windows Primary Server to 2020 Update 2, upgrade fails with the following error:

Zulu Platform x64 Architecture has stopped working

Possible Cause: The error occurs due to Data Execution Prevention (DEP) setting that conflicts with the program.

Action: Check the DEP on the server by navigating to **Control Panel > System > Advanced system settings**. In the **System Properties** window, click **Advanced**, under **Performance**, click **Settings**. In the **Performance Options** window, click **Data Execution Prevention**.

Note the current setting. Select **Turn on DEP for essential Windows programs and services only** if it is not selected. Restart the Windows server and retry upgrading ZENworks Primary Server. If the error persists, contact Micro Focus Support.

**Important:** If the setting was changed prior to upgrade, please revert the value and restart the Windows server.



# 3 Appliance Migration

To migrate a ZENworks 2020 Appliance to ZENworks 2020 Update 2, you need to copy the ZENworks data and appliance network settings from the ZENworks 2020 Appliance, deploy the ZENworks 2020 Update 2 Appliance, and then transfer the ZENworks 2020 data to the ZENworks 2020 Update 2 Appliance.

In a multi-appliance ZENworks system, the order of migration is important only if you are using the embedded PostgreSQL database. In this case, you need to migrate the appliance with the database first, followed by any other appliances. If you are using an external database, you can migrate appliances in any order.

The following sections provide information on how to migrate ZENworks 2020 Virtual Appliance to ZENworks 2020 Update 2, Virtual Appliance:

- ◆ [Section 3.1, “Prerequisites,” on page 51](#)
- ◆ [Section 3.2, “Preparing the ZENworks 2020 Appliance for Migration,” on page 52](#)
- ◆ [Section 3.3, “Deploying and Configuring the ZENworks 2020 Update 2 Appliance,” on page 53](#)
- ◆ [Section 3.4, “Migrating ZENworks 2020 Data to ZENworks 2020 Update 2 Appliance,” on page 54](#)
- ◆ [Section 3.5, “Post migration,” on page 54](#)
- ◆ [Section 3.6, “Updating the ZENworks 2020 Update 2 Lighthouse Appliance to ZENworks 2020 Update 2 FCS,” on page 57](#)
- ◆ [Section 3.7, “Replacing Primary Servers,” on page 57](#)
- ◆ [Section 3.8, “Moving a Primary Server to an Appliance,” on page 57](#)
- ◆ [Section 3.9, “Running the Cleanup Utility,” on page 57](#)

## 3.1 Prerequisites

Before migrating to ZENworks 2020 Update 2, ensure that the following prerequisites are met:

- ◆ **Review changes in the migration process:** Ensure that you have reviewed the changes introduced in the ZENworks 2020 Update 2 release. For more information, see [Changes in the Primary Server Upgrade or Migration Process](#).
- ◆ **Understand the Migration Order:** If you have enabled Vertica in the zone, then for more information, see [Upgrading Servers in a Vertica-enabled Zone](#).
- ◆ **DNS server is configured:** Ensure that a DNS server has been set on the Primary Server that is being migrated. Also, the hostname of the local machine should be resolvable over DNS.
- ◆ **External Content-repo** If you have content-repo as a symbolic link to another folder, which is outside of the ZENworks folder structure, then ensure that you perform the steps in [Appendix E](#) in the [ZENworks Primary Server and Satellite Reference](#).

## 3.2 Preparing the ZENworks 2020 Appliance for Migration

Complete the following steps to prepare the appliance for migration:

- 1 Verify the health of the database by running ZDC. Depending on your ZENworks version, download the ZDC from the Micro Focus Download site. For more information, see [Downloading and Extracting ZDC](#) in the [ZENworks Command Line Utilities Reference](#).
- 2 Ensure that at least 90 GB of free space is available in the `/vastorage` disk for ZENworks 2020 Appliance.
- 3 Run the `microfocus-zenworks-prerequisite.zip` to prepare and copy the zone properties for the appliance migration.

---

**NOTE:** If Vertica is enabled in the zone, then the `microfocus-zenworks-prerequisite.sh` script stops the Vertica cluster and the functionality related to Vertica will not work until all the Vertica enabled Appliances are migrated to ZENworks 2020 Update 2. Hence, it is recommended that you run the `microfocus-zenworks-prerequisite.sh` just before starting the migration process.

---

- 3a Download `microfocus-zenworks-prerequisite.zip` from ZENworks 2020 Update 2 Download site.
  - 3b Extract the `microfocus-zenworks-prerequisite.zip`
  - 3c Copy the `microfocus-zenworks-prerequisite.sh` file to a temporary location on each ZENworks 2020 Appliance Primary Server.
  - 3d Log into the ZENworks 2020 Appliance Primary Server with root user.
  - 3e Add the execute permissions by running the `chmod +x microfocus-zenworks-prerequisite.sh` command.
  - 3f Run the `sh microfocus-zenworks-prerequisite.sh` command.
- 4 Power off the ZENworks 2020 Appliance.
- 5 (Optional) If the ZENworks 2020 Appliance was configured with an additional or external disk for content repository, then ensure that you mount the disk on the ZENworks 2020 Update 2 Appliance.

For example, `/dev/sdb1` mounted to `/var/opt/microfocus/zenworks`

---

**NOTE:** If there is a snapshot of ZENworks 2020 or any earlier versions on the virtual disk, then ensure that you remove the snapshot so that the virtual disk (`vastorage`) includes only a standalone file while copying the disk to the ZENworks 2020 Update 2 Appliance.

---

- 6 Copy the ZENworks 2020 Appliance virtual disk (`vastorage`).

It is recommended to copy the ZENworks 2020 Appliance virtual disk and attach it to the ZENworks 2020 Update 2 Appliance. Ensure that you maintain the same folder structure in the ZENworks 2020 Update 2 appliance.

---

**NOTE:** If the `microfocus-zenworks-prerequisite.sh` is not executed properly, or volume is not copied to the ZENworks 2020 Update 2 Appliance, then an error message will be displayed.

---

## 3.3 Deploying and Configuring the ZENworks 2020 Update 2 Appliance

You need to deploy the ZENworks 2020 Update 2 Appliance to migrate the existing appliance and then configure the ZENworks 2020 Update 2 Appliance with the ZENworks 2020 data and network settings.

---

**IMPORTANT:** The ZENworks 2020 Update 2 Appliance should be hosted on the same network as the ZENworks 2020 appliance.

---

- 1 Deploy the appliance as instructed in [Deploying the Appliance](#) in the [ZENworks Appliance Deployment and Administration Reference](#) and do not attach the new hard disk.

Do NOT power on the appliance at this time.

- 2 Attach the migration hard disk (`/vastorage`) that was copied in [Step 6](#) of “[Preparing the ZENworks 2020 Appliance for Migration](#)” on [page 52](#), to the ZENworks 2020 Update 2 Appliance.

- 3 Power on the ZENworks 2020 Update 2 Appliance and wait till credential screen appears.

- 4 Specify the `root` and `zenadmin` passwords for the ZENworks 2020 Update 2 Appliance.

The Appliance Configuration utility automatically populates the identity and network details for the ZENworks 2020 Update 2 Appliance from the ZENworks 2020 data and continues booting the appliance. When the process is complete, on the Appliance console the URL is displayed.

- 5 If the ZENworks 2020 Appliance was using an external content repository, then attach the corresponding disk to ZENworks 2020 Update 2 Appliance.

To configure the external disk, perform the following:

- 5a After restarting the ZENworks 2020 Update 2 Appliance, log into the appliance as `root` and stop the ZENworks services.

If the appliance hosts the Embedded PostgreSQL, then PostgreSQL service (`zenpostgresql`) should be running. Run the following command to check the status of the PostgreSQL service:

```
systemctl status zenpostgresql
```

- 5b Mount the disk partition on the ZENworks 2020 Update 2 Appliance in the original structure.

- 5c (Conditional) Ensure that you have unmounted the shared content repository from the old Novell path and mount the repository to the new Micro Focus path, that is, `/var/opt/microfocus/zenworks/content-repo`.

- 5d After the hard disk is mounted, ensure that `/etc/fstab` is updated with mounted partition correctly. You may use YaST partitioner to mount the disk partition to correct ZENworks directory.

For information about mounting a content repository, see [Creating a Permanent Mount](#) in the [ZENworks Primary Server and Satellite Reference](#).

5e Ensure that new mounted directory has required permissions. To modify the permissions, run the `permissions.sh` script.

The `permissions.sh` is available in the `/opt/microfocus/zenworks/bin/` location.

6 Take note of the URLs displayed in the console, then continue with the next task, [Migrating ZENworks 2020 Data to ZENworks 2020 Update 2 Appliance](#).

## 3.4 Migrating ZENworks 2020 Data to ZENworks 2020 Update 2 Appliance

After you have deployed and configured the ZENworks 2020 Update 2 Appliance, you are ready to migrate ZENworks 2020 data to the appliance.

1 In a supported browser, launch the URL that is displayed in the Appliance console.

For example, `https://<FQDN>:9443`

2 Log in to ZENworks Appliance with the `root` or `zenadmin` credentials as configured in [Step 4 on page 53](#).

3 Verify that all of the migration requirements are met, select the **I have verified that all necessary steps have been completed** check box, then click **Next** to display the ZENworks Management Zone credential screen.

If all the migration requirements are not met, click **Cancel**, complete the requirements, then log into the ZENworks Appliance console again to complete the migration.

---

### IMPORTANT

If the appliance is a second Primary Server and the database is Embedded PostgreSQL, then you must ensure that the PostgreSQL service (`zenpostgresql`) on the first Primary Server is started.

---

4 Specify the ZENworks administrator credentials to access the ZENworks Management Zone.

---

**NOTE:** While migrating the Appliance, the administrator user name might be case sensitive. For more information, see the [ZENworks 2020 Readme](#).

---

5 The ZENworks migration begins and it might take several minutes. The migration process will continue in the background even if you close the browser or if the session times out.

6 When the ZENworks migration is finished, click **Close** to display the ZENworks Appliance configuration summary screen.

7 Click **Open ZENworks Control Center** to see your migrated data and to continue managing your ZENworks system.

## 3.5 Post migration

- ◆ After Appliance migration, the ZENworks Server data will be available in the Micro Focus file path. ZENworks Server services will follow the Micro Focus naming convention, that is, Micro Focus will be prefixed with the name of the service. However, the ZENworks agent data will be

available in the Novell file path and the related agent services will follow the Novell naming convention, that is, Novell will be prefixed with the name of the service. To view these changed file paths and service names, see [Viewing the Renamed Services and File Locations](#).

- ◆ Run ZDC to verify the migrated ZENworks 2020 Update 2 Appliance System.

For more information, see [ZENworks Diagnostic Center](#) in [ZENworks Command Line Utilities Reference](#),

- ◆ Ensure that all ZENworks services are running: `microfocus-zenworks-configure -c SystemStatus`
- ◆ Ensure that the ZooKeeper service is up and running at all times to enable proper functioning of various ZENworks components. To verify the status of the ZooKeeper service, see the [Diagnostics](#) page in ZCC. For more information on the ZooKeeper component, see [ZENworks Server](#) in the [ZENworks Primary Server and Satellite Reference](#).

If the Primary Servers in your zone are unable to communicate with the ZooKeeper service due to firewall restrictions, you can run the following configure action to open the ZooKeeper ports. You also need to ensure that the firewall allows client connections from other Primary Servers to the ZooKeeper services on port 6789. If the Primary Servers in your zone are unable to access the ZooKeeper service, then to open the ports, you can run the following Configure action on the server in which ZooKeeper is enabled.

```
microfocus-zenworks-configure -c ClusterFirewallConfigureAction -  
Doperation=add -Dservice=zookeeper
```

However, if the Primary Server that is within the DMZ is unable to access the ZooKeeper service within the corporate network, then you need to manually open the port 6789 in the corporate firewall.

For more information on the ZooKeeper ports, see [ZENworks 2020 TCP and UDP Ports](#).

- ◆ After appliance migration, the ZENworks server configuration will be copied from the old Novell file path to the new Micro Focus file path. However, the ZENworks server binaries and old configuration in the old file path is retained during the upgrade process. After verifying whether the upgraded version of the ZENworks Server is working as expected, you can run the Legacy Cleanup Utility provided with the build after a couple of weeks, to delete the retained server data.

For more information, see [Running Cleanup Utility on a Linux or Appliance Server](#) or [Running the Cleanup Utility on Windows Server](#).

- ◆ (Optional) When you run the cleanup utility, Sybase related files will be retained, which can be removed manually after verifying whether the upgraded ZENworks Server is working as expected.

If you have migrated from the Sybase database to any other database using the database migration tool, the database files, services, and Sybase packages might be retained in the Primary Server. To cleanup the data, run the following scripts on the Primary Server that had the Sybase database.

- ◆ **On Linux/Appliance:** Run the script available in: `/opt/microfocus/zenworks/install/downloads/tools/cleanupSybase.sh`
- ◆ **On Windows:** Open the PowerShell console and run the script available in the `ZENWORKS_HOME/install/downloads/tools/cleanupSybase.ps1` location.

On Windows, ensure that you DO NOT USE COMMAND PROMPT.

## 3.5.1 Viewing the Renamed Services and File Locations

After a successful upgrade, you can now view the renamed services and file locations introduced in the ZENworks 2020 Update 2 release.

- ♦ [“New File Path for ZENworks Server Data” on page 56](#)
- ♦ [“Renamed Configure Actions” on page 56](#)
- ♦ [“Renamed Services” on page 56](#)

### New File Path for ZENworks Server Data

Example:

- ♦ **Log Files:** The log files will now be available in the new Micro Focus path (`/var/opt/microfocus/log/zenworks`). However, the log files will also be retained in the old Novell path (`/var/opt/novell/log/zenworks`).
- ♦ **Conf Files:** The configuration files for only the ZENworks Server will now be available in the new Micro Focus path (`/etc/opt/microfocus/zenworks`). However, the configuration files for both the server and the agent will be retained in the old Novell path (`/etc/opt/novell/zenworks`).
- ♦ **Libraries:** The libraries for only the ZENworks Server will now be available in the new Micro Focus path (`/opt/microfocus/zenworks`). However, the libraries for both the server and the agent will be retained in the old Novell path (`/opt/novell/zenworks`).

### Renamed Configure Actions

Configure actions have been renamed from Novell to Micro Focus. For example, the configure action `novell-zenworks-configure -c CalibrateMemoryConfigureAction` is now renamed to `microfocus-zenworks-configure -c CalibrateMemoryConfigureAction`. Configure actions that follow the Novell naming convention have been deprecated in this release and will be available along with the Configure actions that follow the Micro Focus naming convention.

### Renamed Services

ZENworks Server services have been renamed from Novell to Micro Focus. For example, `novell-zenserver.service` is renamed to `microfocus-zenserver.service`.

Similarly, services such as `novell-zenloader.service` and `novell-zenjoinproxy.service` are renamed to `microfocus-zenloader.service` and `microfocus-zenjoinproxy.service`, respectively.

Certain services that follow the Novell naming convention, especially those related to the ZENworks agent, will still be applicable.

Therefore, while using the `systemctl` commands to start or stop services, ensure that you use the renamed services in the command.



## 3.6 Updating the ZENworks 2020 Update 2 Lighthouse Appliance to ZENworks 2020 Update 2 FCS

---

**NOTE:** If you have deployed ZENworks 2020 Update 2 Lighthouse Appliance build on Microsoft Hyper-V, XEN on SLES, or Citrix XenServer and want to update to the ZENworks 2020 Update 2 FCS build, please contact Micro Focus Customer Support, and then perform the steps mentioned in the [Updating the ZENworks 2020 Update 2 Lighthouse build to ZENworks 2020 Update 2 FCS](#)

---

## 3.7 Replacing Primary Servers

The first Primary Server in your one can be replaced with the second Primary Server, or you can replace an existing Primary Server with a new Primary Server. For more information on replacing Primary Servers, see the [Replacing Primary Servers](#) in the [ZENworks Disaster Recovery Reference](#).

## 3.8 Moving a Primary Server to an Appliance

An existing Windows or Linux Primary Server can be moved to an Appliance server. For more information, see [Moving from a Windows or Linux Primary Server to Appliance](#) in the [ZENworks Primary Server and Satellite Reference](#).

## 3.9 Running the Cleanup Utility

After appliance migration, the ZENworks server configuration will be copied from the old Novell file path to the new Micro Focus file path. However, the ZENworks server binaries and old configuration in the old file path is retained during the upgrade process. After verifying whether the upgraded version of the ZENworks Server is working as expected, you can run the cleanup utility provided with the build, to remove the retained server data. For more information, see [Running Cleanup Utility on a Linux or Appliance Server](#).



# 4 Updating Satellites and Managed Devices to ZENworks 2020 Update 2

To update the managed devices and Satellite Servers to ZENworks 2020 Update 2, review the following sections:

- ♦ [Section 4.1, “Prerequisites for Updating Satellite Servers or Managed Devices,”](#) on page 59
- ♦ [Section 4.2, “Supporting ZENworks 2017 Device Upgrades,”](#) on page 60
- ♦ [Section 4.3, “Updating Satellite Servers and Managed Devices,”](#) on page 60

## 4.1 Prerequisites for Updating Satellite Servers or Managed Devices

Before updating a Satellite Server or managed device from a supported ZENworks version to ZENworks 2020 Update 2, you must complete the following tasks:

---

**NOTE:** For information about the supported versions, see the [ZENworks 2020 Update 2 System Requirements](#).

---

- ♦ Ensure that the device meets the minimum system requirements for ZENworks 2020 Update 2.  
For more information on managed device requirements, see [ZENworks 2020 Update 2 System Requirements](#).
- ♦ If you are using the Sybase database, then ensure that the database is migrated from Sybase to PostgreSQL.  
For more information, see [Database Migration from Sybase to PostgreSQL](#)
- ♦ Ensure that the Microsoft .NET 4.5, or later framework and its latest updates are installed and running on the device.
- ♦ Ensure that the Windows Installer 4.5 or later version is installed.
- ♦ Ensure that all the Primary Servers in the zone have been upgraded to ZENworks 2020 Update 2.
- ♦ If you choose to deploy the System Update in stages, ensure that the stage that you create contains at least one stage member (an individual device and a group that contain devices).
- ♦ Ensure that the Update for ZENworks 2020 Update 2 displays in the Available System Updates list in ZCC. If it is not available, then run the following command to import the update:  

```
zman sui <install media\ISO>:\Common
```
- ♦ Agents with Windows XP would have to remain on ZENworks 11, as Windows XP is not supported from ZENworks 2017 onwards.
- ♦ From ZENworks 2020 Update 2 onwards, promoting 32-bit agents as a Satellite Server is not supported.

## 4.2 Supporting ZENworks 2017 Device Upgrades

If you have ZENworks 2017 managed devices or Satellite Servers in your network and want to register the devices to a new ZENworks 2020 Update 2 Management Zone so that they can be automatically upgraded to ZENworks 2020 Update 2, you must import the ZENworks 2020 System Update into the zone from the ZENworks 2020 Update 2 installation media.

From ZENworks 2020 onwards, promoting a 32-bit device as a Satellite Server is not supported.

## 4.3 Updating Satellite Servers and Managed Devices

To update Satellite Servers or managed devices, use the System Update feature. For detailed information, see the [ZENworks System Updates Reference](#).

If you encounter any issues while deploying the ZENworks update on the managed devices, see the following log files:

**Windows:** `installation_path\novell\zenworks\logs\system-update\502000000fc5000000002019100412\system-update.log`

**Linux:** `/var/opt/novell/log/zenworks/system-update/502000000fc5000000002019100412/system-update.log`

In the upgrade log file path, 502000000fc5000000002019100412 indicates the System Update GUID.

---

### NOTE

- ◆ After updating from an older version of ZENworks on which ZENworks Patch Management is installed, DAU might fail on newly added devices until the next Patch Management subscription is updated.

After the DAU bundle is updated by the subscription and the version is incremented by the same, this issue will be resolved. This issue does not impact the existing ZENworks agents as they already have the `analyze.exe` module installed on them. Therefore, they continue to execute the old DAU and receive an updated patch agent when the subscription service updates the DAU bundle.

- ◆ If you demote a Satellite Server before performing an update, you need to ensure that the demotion is successful before you proceed with the update.
-

# 5 Upgrading Servers in a Vertica-enabled Zone

This section intends to provide some essential information as well as some best practices that you need to keep in mind before upgrading your servers to the ZENworks 2020 Update 2 version, if you have configured Vertica in your zone as part of an earlier ZENworks release.

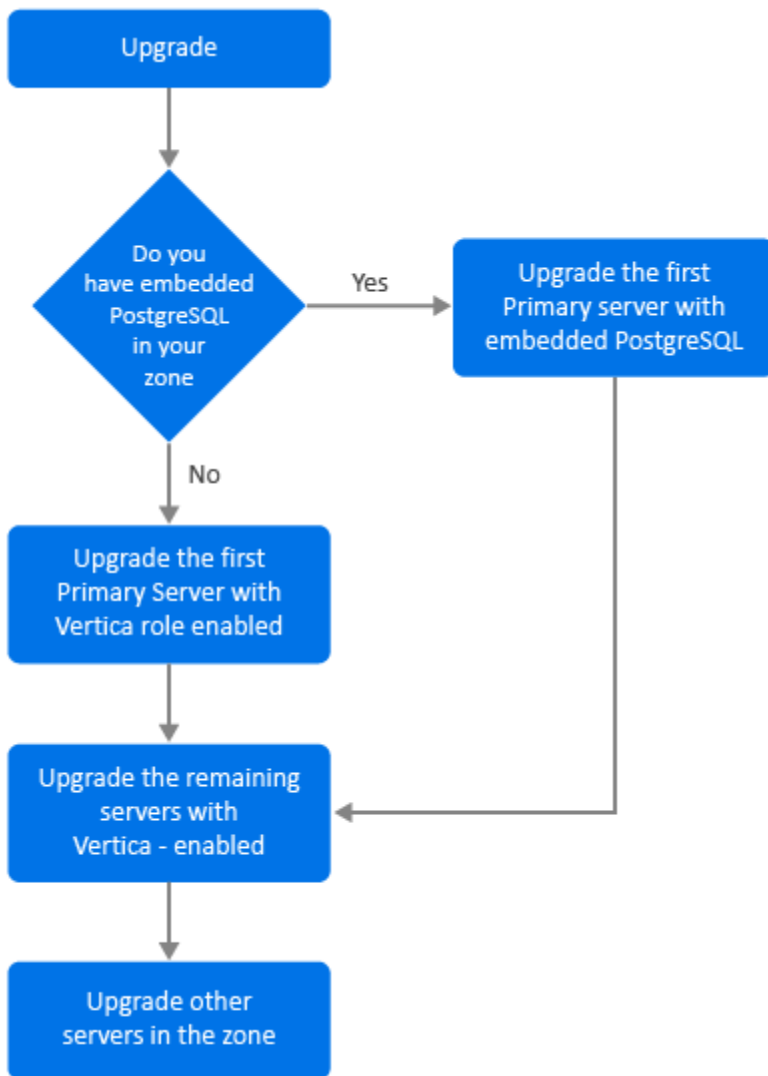
## 5.1 Best Practices

It is recommended that you first upgrade the servers on which Vertica is enabled and subsequently upgrade the other Primary Servers in the zone. However, if you are using an Embedded PostgreSQL database, then you need to first upgrade the server that hosts the database and then upgrade the servers on which Vertica is enabled.

## 5.2 Understanding the Upgrade Order in a Vertica-enabled Zone

As stated earlier in this guide, if you have multiple servers in the zone, when you perform the upgrade for the first time in the Management Zone, only one Primary Server can be upgraded at a time and this server will be considered as the first Primary Server. The subsequent upgrade of additional Primary Servers can be done in parallel.

The sequence in which the servers are to be upgraded is illustrated below:



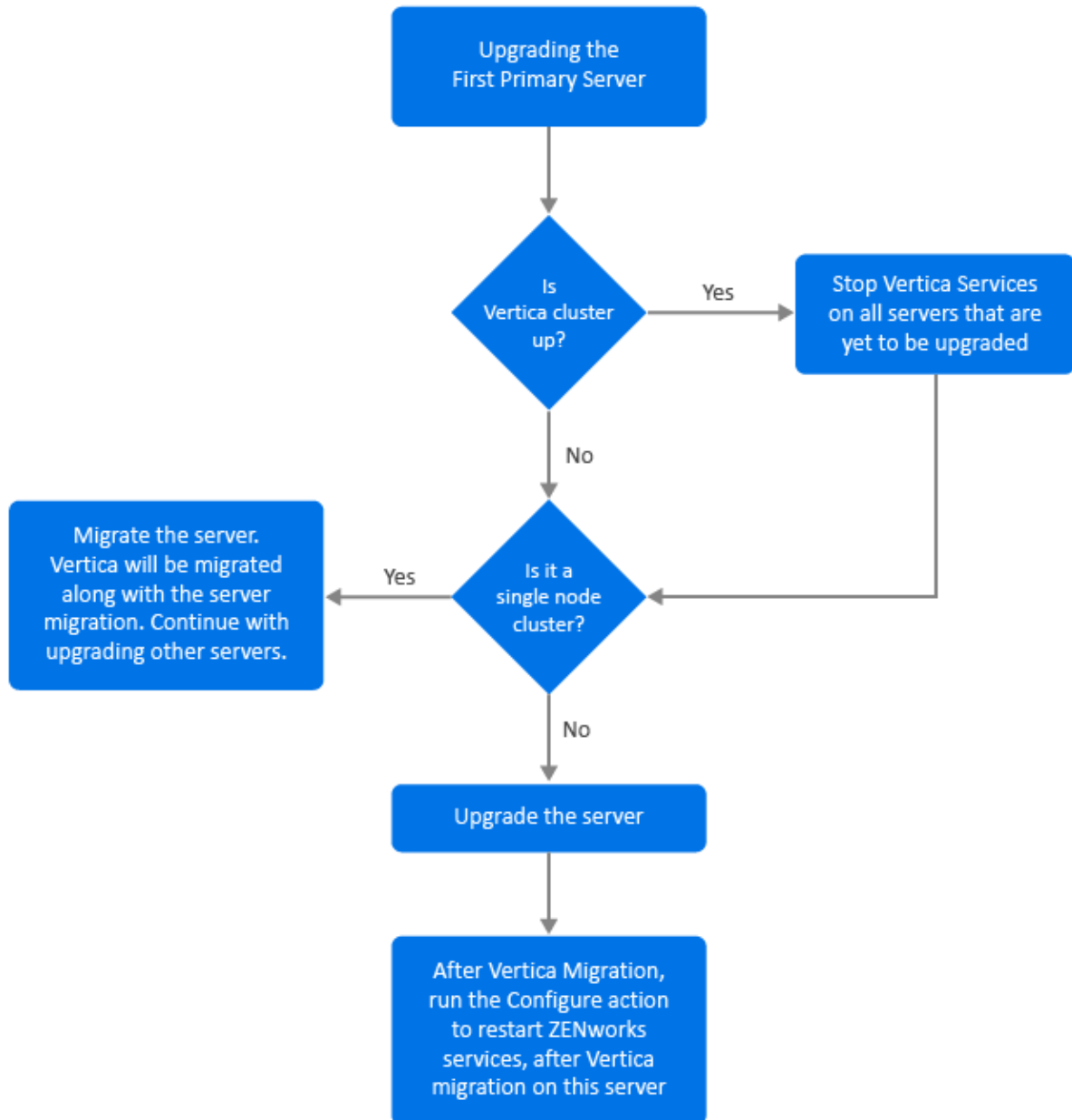
1. If embedded PostgreSQL is present in your zone, then it is mandatory that you first upgrade the server that has the embedded PostgreSQL database and then continue with Step 3.
2. (Conditional) If embedded PostgreSQL is not present in the zone, then it is recommended that you first upgrade the Appliance server that has the Vertica role enabled in it.
3. Upgrade the other servers that have the Vertica-role enabled, if any
4. Upgrade the remaining servers in the zone.

### 5.3 Prerequisites

Before upgrading a Primary Server in your zone, ensure that the ZENworks services including the Vertica services are down, on all the other Primary Servers that are to be upgraded. To stop the Vertica services on all the servers in which Vertica is enabled, see the Vertica Reference guide.

## 5.4 Upgrading the First Primary Server

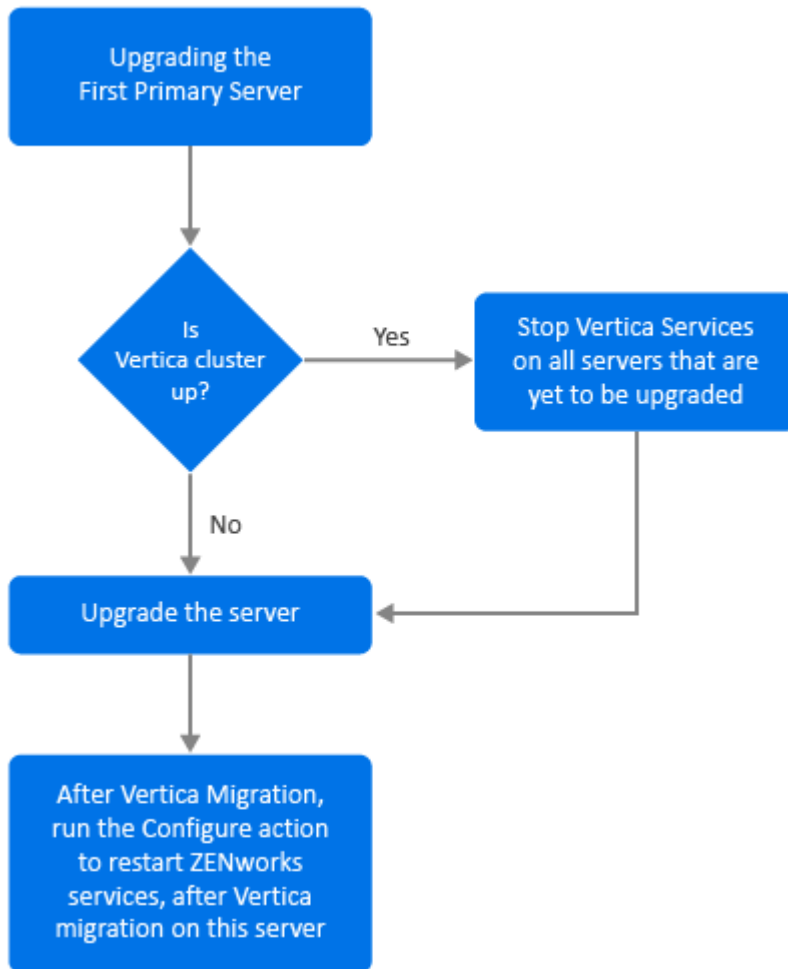
### 5.4.1 If the First Primary Server is an Appliance Server



1. Ensure that you refer to the Prerequisites section before upgrading the server.
2. If the first Primary Server is an Appliance server with the Vertica role enabled:
  - ♦ If the server is the only server in which Vertica is enabled, then migrate the Appliance server. For more information, see [Appliance Migration](#). The Appliance server along with the Vertica database is migrated. Continue with Step 4.
  - ♦ If the Appliance server is one of the servers in the Vertica cluster, then migrate this server. For more information, see [Appliance Migration](#). After migration, continue with Step 3.

3. Post-upgrade, the zone will run with limited capabilities until all the servers in which Vertica is enabled, are upgraded. After all the servers in which Vertica is enabled, are upgraded, run the Configure action `microfocus-zenworks-configure -c Start` to restart the ZENworks services on the first Primary Server that you have upgraded.
4. You can now continue upgrading other servers in the zone.

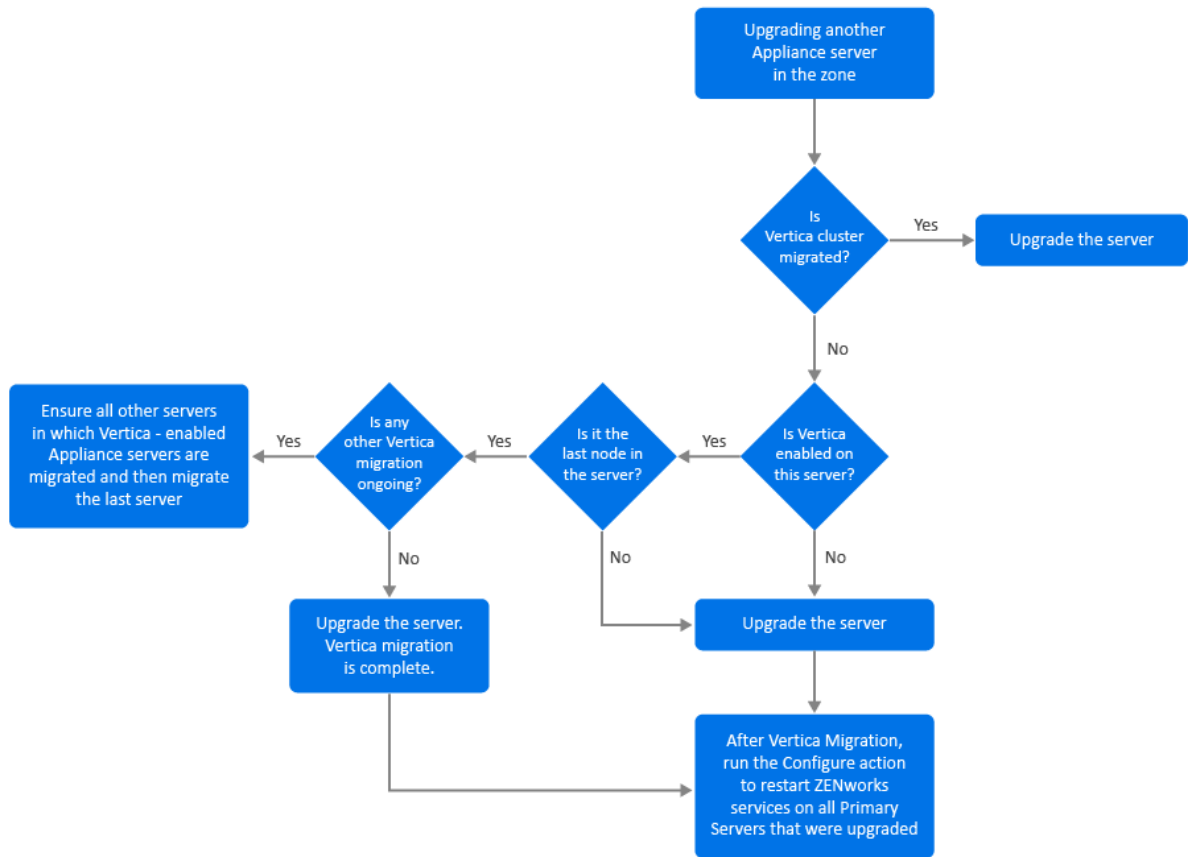
## 5.4.2 If the First Primary Server is a not an Appliance Server



1. Ensure that you refer to the Prerequisites section before upgrading the server.
2. If the first Primary Server is a Windows or a Linux server that has the embedded PostgreSQL server, then upgrade the server and continue with Step 3. For more information on upgrading the server, see [Upgrading Linux and Windows Primary Servers to ZENworks 2020 Update 2](#).
3. You can now continue upgrading other servers in the zone, in which Vertica is enabled.
4. Post-upgrade, the zone will run with limited capabilities until all the servers in which Vertica is enabled, are upgraded. After all the servers in which Vertica is enabled are upgraded, run the Configure action `microfocus-zenworks-configure -c Start` to restart the ZENworks services on the first Primary Server that you have upgraded

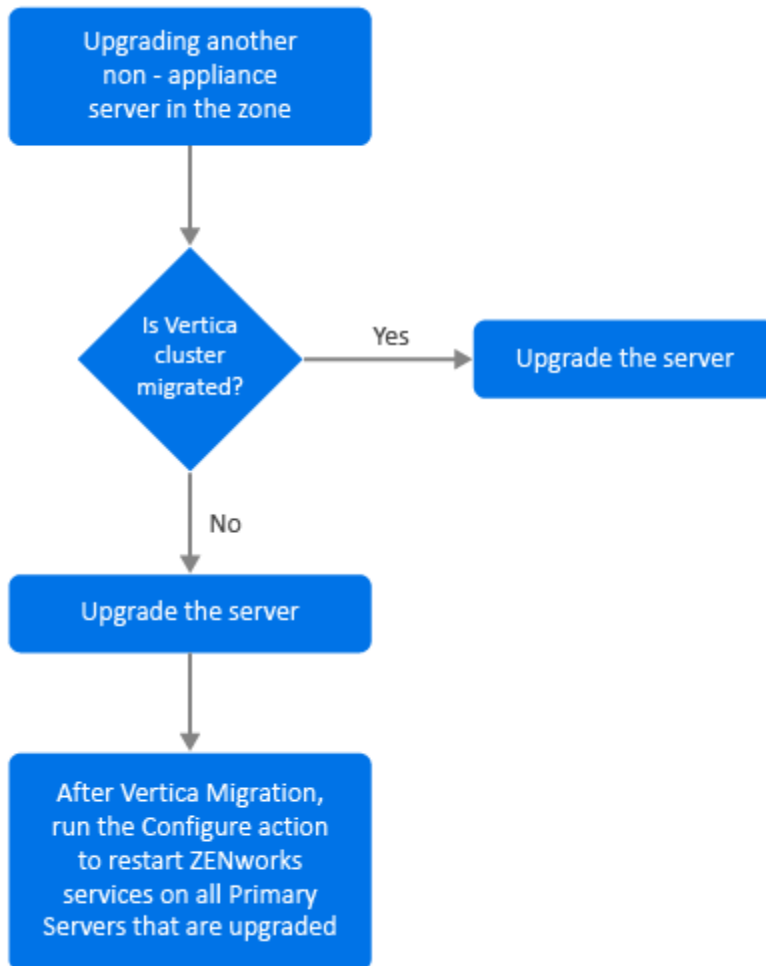


## 5.5 Upgrading Other Servers in the Zone (Appliance)



1. If all the servers that were part of the Vertica cluster are already migrated, then migrate the remaining Appliance servers and continue with Step 5. For more information on migrating the server, see [Appliance Migration](#). If all the servers that are part of the Vertica cluster, are yet to be migrated, then continue with Step 2.
2. If the Appliance server that is to be migrated does not have the Vertica role enabled, then migrate the server and continue with Step 4. For more information on migrating the server, see [Appliance Migration](#). If the Appliance server has the Vertica role enabled, then continue with Step 3.
3. If the Appliance server to be migrated is part of the Vertica cluster:
  - ♦ This server is the last node in the cluster: You need to wait for the other servers in the cluster to complete migration. If Appliance migration on these servers is ongoing, then wait for the process to complete before migrating the last node. After other servers in which Vertica is enabled, are successfully migrated, then migrate the last node and continue with Step 4. For more information on migrating the server, see [Appliance Migration](#).
  - ♦ This server is not the last node: Migrate the server and continue with Step 4. For more information on migrating the server, see [Appliance Migration](#).
4. After the last node in the Vertica cluster is upgraded, run the Configure action `microfocus-zenworks-configure-c Start` to restart the ZENworks services on all the Primary Servers that have been upgraded until now
5. Continue with the upgrade of the remaining servers in the zone, if any

## 5.6 Upgrading Other Servers in the Zone (Non-appliance)



1. If all the Appliance servers in which Vertica is enabled, are already migrated, then upgrade the Windows or the Linux server (non-appliance) and continue with Step 4. For more information on upgrading the server, see [Upgrading Linux and Windows Primary Servers to ZENworks 2020 Update 2](#).
2. If the servers in which Vertica is enabled, are yet to be migrated, then upgrade the Windows or the Linux server (non-appliance) and continue with Step 3.
3. Post-upgrade, the zone will run with limited capabilities until all the servers in which Vertica is enabled, are upgraded. After the last node in the Vertica cluster is upgraded, run the Configure action `microfocus-zenworks-configure-c Start` to restart the ZENworks services on all the Primary Servers that have been upgraded until now, that is, Server 1, Server 2 and Server 3.
4. Continue with the upgrade of the remaining servers in the zone, if any.

## 5.7 Examples

### 5.7.1 Scenario 1

There are 5 Primary Servers in a zone that uses the embedded database.

- ♦ Server 1 is a Linux server with embedded PostgreSQL
- ♦ Server 2, 3, and 4 are Appliance servers in which the Vertica-role is enabled
- ♦ Server 5 is a Linux server

#### Procedure

1. As a prerequisite, the Vertica cluster should be down. To bring down the cluster, you need to stop the Vertica services on all the servers in which Vertica is enabled. For more information, see the Vertica Reference guide.
2. Upgrade server 1. This is the first Primary Server that needs to be upgraded as it contains the embedded PostgreSQL.
3. Migrate server 2 and server 3 that are part of the Vertica cluster.
4. Migrate Server 4. As this is the last node in the Vertica cluster, you need migrate this server, only after Servers 2 and 3 are successfully migrated.
5. Run the Configure action `microfocus-zenworks-configure-c` Start to restart the ZENworks services on all the Primary Servers that have been upgraded up till now (server 1, server 2, and server 3)
6. Upgrade server 5.

### 5.7.2 Scenario 2

There are 3 Primary Servers in a zone that uses the external database:

- ♦ Server 1 is an Appliance server with Vertica enabled
- ♦ Server 2 is an Appliance server but does not have the Vertica role enabled
- ♦ Server 3 is a Windows server

#### Procedure

1. Migrate server 1. This is the first Primary Server that needs to be upgraded as the Vertica role is enabled in this server.
2. Migrate and upgrade servers 2 and 3.



# A Documentation Updates

This section contains information on documentation content changes that were made in this Upgrade for ZENworks Configuration Management. The information can help you to keep current on updates to the documentation.

The documentation for this product is provided on the Web in two formats: HTML and PDF. The HTML and PDF documentation are both kept up-to-date with the changes listed in this section.

If you need to know whether a copy of the PDF documentation that you are using is the most recent, the PDF document includes a publication date on the title page.

The documentation was updated on the following date:

## A.1 May 2021: ZENworks 2020 Update 2

Location	Change
<a href="#">Chapter 1, “Upgrading or Migrating the Primary Servers,” on page 7</a>	New chapter introduced that provides general upgrade information for Windows, Linux, and Appliance servers.
<a href="#">Chapter 2, “Upgrading Linux and Windows Primary Servers to ZENworks 2020 Update 2,” on page 17</a>	<a href="#">Section 2.1, “Prerequisites,” on page 17</a> : Updated prerequisites <a href="#">Section 2.2.5, “Running the Cleanup Utility,” on page 34</a> : New chapter introduced.
<a href="#">Chapter 3, “Appliance Migration,” on page 51</a>	<a href="#">Section 3.1, “Prerequisites,” on page 51</a> : Updated the prerequisites. <a href="#">Section 3.2, “Preparing the ZENworks 2020 Appliance for Migration,” on page 52</a> : Updated step 3. <a href="#">Section 3.5, “Post migration,” on page 54</a> : Updated this section.
<a href="#">Chapter 5, “Upgrading Servers in a Vertica-enabled Zone,” on page 61</a>	New chapter introduced

