

Novell ZENworks® Personality Migration

7 SP1

www.novell.com

INSTALLATION GUIDE

March 23, 2007



Novell®

Legal Notices

Novell, Inc. makes no representations or warranties with respect to the contents or use of this documentation, and specifically disclaims any express or implied warranties of merchantability or fitness for any particular purpose. Further, Novell, Inc. reserves the right to revise this publication and to make changes to its content, at any time, without obligation to notify any person or entity of such revisions or changes.

Further, Novell, Inc. makes no representations or warranties with respect to any software, and specifically disclaims any express or implied warranties of merchantability or fitness for any particular purpose. Further, Novell, Inc. reserves the right to make changes to any and all parts of Novell software, at any time, without any obligation to notify any person or entity of such changes.

Any products or technical information provided under this Agreement may be subject to U.S. export controls and the trade laws of other countries. You agree to comply with all export control regulations and to obtain any required licenses or classification to export, re-export, or import deliverables. You agree not to export or re-export to entities on the current U.S. export exclusion lists or to any embargoed or terrorist countries as specified in the U.S. export laws. You agree to not use deliverables for prohibited nuclear, missile, or chemical biological weaponry end uses. Please refer to www.novell.com/info/exports/ for more information on exporting Novell software. Novell assumes no responsibility for your failure to obtain any necessary export approvals.

Copyright © 2007 Novell, Inc. All rights reserved. No part of this publication may be reproduced, photocopied, stored on a retrieval system, or transmitted without the express written consent of the publisher.

Novell, Inc. has intellectual property rights relating to technology embodied in the product that is described in this document. In particular, and without limitation, these intellectual property rights may include one or more of the U.S. patents listed at <http://www.novell.com/company/legal/patents/> and one or more additional patents or pending patent applications in the U.S. and in other countries.

Novell, Inc.
404 Wyman Street, Suite 500
Waltham, MA 02451
U.S.A.
www.novell.com

Online Documentation: To access the online documentation for this and other Novell products, and to get updates, see www.novell.com/documentation.

Novell Trademarks

For a list of Novell trademarks, see the [Novell Trademark and Service Mark List \(http://www.novell.com/company/legal/trademarks/tmlist.html\)](http://www.novell.com/company/legal/trademarks/tmlist.html) at <http://www.novell.com/company/legal/trademarks/tmlist.html>

Third-Party Materials

All third-party trademarks are the property of their respective owners.

Contents

About This Guide	7
1 What Is Novell ZENworks Personality Migration?	9
2 Preparing the Server for Personality Migration	11
2.1 Creating the Desktop DNA Template Store	11
2.2 Creating the Personality Migration Personality Store	12
2.2.1 Creating the Personality Store on a NetWare Server	12
2.2.2 Creating the Personality Store on a Windows Server	12
2.2.3 Creating the Personality Store on a Linux Server	12
3 Preparing Workstations for Personality Migration	13
3.1 Personality Migration Management Workstation	13
3.2 User Workstations	13
3.3 User Login Restriction	14
4 Installing ZENworks Personality Migration	15
5 Using the DNA Template Editor to Create the Template	21
5.1 Creating a DNA Template	21
5.2 Configuring the Template	22
5.2.1 Configuring Users Settings	22
5.2.2 Configuring System Settings	24
5.2.3 Configuring Applications Settings	25
5.2.4 Configuring Files Settings	26
5.2.5 Adding Drive Destinations	27
5.3 Working with Filters	28
5.4 Re-enabling the Muscle Migration Function.	32
6 Creating the Application Object to Collect the Personality	35
7 Creating the Application Object to Apply the Personality	39
8 Upgrading Personality Migration	41
A Documentation Updates	43
A.1 March 23, 2007	43
A.1.1 Creating the Application Object to Apply the Personality	43
A.1.2 Creating the Application Object to Collect the Personality	43
A.2 July 14, 2006 (Support Pack 1)	44
A.2.1 Creating the Desktop DNA Template Store	44
A.2.2 Creating the Personality Migration Personality Store	44
A.2.3 Installing ZENworks Personality Migration	44

A.2.4	Creating a DNA Template	45
A.2.5	Configuring the Template	45
A.2.6	Working with Filters	45
A.2.7	Re-enabling the Muscle Migration Function	45
A.3	December 9, 2005	45

About This Guide

This *Novell ZENworks 7 Personality Migration with Support Pack 1 Installation Guide* consists of conceptual information to help you install and use Novell® ZENworks® 7 Personality Migration with SP1.

The sections include:

- ♦ “What Is Novell ZENworks Personality Migration?” on page 9
- ♦ “Preparing the Server for Personality Migration” on page 11
- ♦ “Preparing Workstations for Personality Migration” on page 13
- ♦ “Installing ZENworks Personality Migration” on page 15
- ♦ “Using the DNA Template Editor to Create the Template” on page 21
- ♦ “Creating the Application Object to Collect the Personality” on page 35
- ♦ “Creating the Application Object to Apply the Personality” on page 39

Audience

This guide is intended for network administrators and IT professionals who manage network resources, and who want to use ZENworks 7 Personality Migration with SP1 to preserve the applications and configurations on network workstations when users begin using new hardware.

Feedback

We want to hear your comments and suggestions about this manual and the other documentation included with this product. Please use the User Comment feature at the bottom of each page of the online documentation, or go to www.novell.com/documentation/feedback.html (<http://www.novell.com/documentation/feedback.html>) and enter your comments there.

Documentation Updates

See the [Novell Documentation Web site](http://www.novell.com/documentation) (<http://www.novell.com/documentation>) for the most current installation and administration information.

Additional Documentation

Computer Associates has provided Release Notes for this release of Personality Migration. These notes include minimum installation requirements, minimum run requirements, installation instructions, and descriptions of new features. For more information, see the [ZENworks 7 Personality Migration Readme](http://www.novell.com/documentation/zenworks7/readme/readme_pm_7.html) (http://www.novell.com/documentation/zenworks7/readme/readme_pm_7.html).

You can also read an article on the ZENworks Cool Solutions Web site about Personality Migration. For more information, see [Policy-Driven Personality Migration](http://www.novell.com/cool-solutions/zenworks/features/a_personality_mig_zw.html) (http://www.novell.com/cool-solutions/zenworks/features/a_personality_mig_zw.html).

Documentation Conventions

In Novell documentation, a greater-than symbol (>) is used to separate actions within a step and items in a cross-reference path.

A trademark symbol (® , ™ , etc.) denotes a Novell trademark. An asterisk (*) denotes a third-party trademark.

When a single pathname can be written with a backslash for some platforms or a forward slash for other platforms, the pathname is presented with a backslash. Users of platforms that require a forward slash, such as Linux* or UNIX* , should use forward slashes as required by your software.

What Is Novell ZENworks Personality Migration?

1

Novell® ZENworks® 7 Personality Migration with SP1 is part of the Novell ZENworks product line, which also includes ZENworks Desktop Management, ZENworks Handheld Management, and ZENworks Server Management.

ZENworks products provide life cycle directory-enabled management for all of your network components. For more information on the ZENworks product line, see the [Novell ZENworks product Web site \(http://www.novell.com/products/zenworks\)](http://www.novell.com/products/zenworks).

Novell has partnered with Computer Associates International, Inc. (CA) to provide personality migration. CA provides ZENworks Personality Migration, powered by Unicenter* Desktop DNA*, to create the personality files. Novell provides ZENworks Desktop Management to distribute Application objects to collect, store, and apply personality settings to associated workstations.

The process of integrating Novell ZENworks Desktop Management and ZENworks Personality Migration consists of installing Desktop DNA, setting up a network directory structure to store Desktop DNA templates and personality files, creating the DNA template, and finally creating two Desktop Management Application objects. The first Application object collects the DNA personality from associated workstations and stores the files in a network location. The second Application object pushes and applies the DNA personality to associated workstations.

Desktop DNA lets you perform faster and more efficient desktop migrations, upgrades, and backups. It uses the industry's only patented technology for customizing and automating the migration process of application and personal settings, applications, and data files. For more information about Computer Associates and Unicenter Desktop DNA, see the [Computer Associates Operations Management Web site \(http://www3.ca.com/Solutions/Product.asp?ID=4920\)](http://www3.ca.com/Solutions/Product.asp?ID=4920).

ZENworks Personality Migration provides enterprise customers the fastest return on investment by saving time and resources at every step of the migration process. Whether you are migrating to a newer version of the Windows* operating system, replacing or refreshing old machines, or building a desktop recovery process, ZENworks Personality Migration helps your organization increase IT staff productivity, reduce user downtime, and save money.

Personality Migration lets you migrate the following:

- ◆ **User Accounts:** User profiles for the logged-on user or for multiple users.
- ◆ **Desktop:** Shortcuts, taskbar, wallpaper, display settings, and more.
- ◆ **Network Settings:** Dial-up settings, local network settings, TCP/IP and DNS settings, mapped network drives, folder and directory sharing, and more.
- ◆ **Printer Settings:** Printer settings are migrated if printer drivers are compatible with the destination system's operating system.
- ◆ **Applications:** ZENworks Personality Migration gives you the option to migrate any application on the source system.
- ◆ **Application Settings:** Preferences, templates, bookmarks, address books, macros, and other settings.

- ♦ **Files:** Any file can be migrated by selecting it from a check-box tree, or by locating it with one or more search filters.
- ♦ **Folders:** You can migrate a folder and its contents or you can migrate entire folder structures.

ZENworks 7 Personality Migration with SP1 supports the following migration types:

- ♦ **Real-Time:** Real-Time migrations take place over a TCP/IP network and transfer a workstation's personality directly from the old workstation to a new workstation. This type of migration is useful if you are replacing an old workstation with a new workstation. This type of migration is not the focus of this guide. For more information on real-time migration, refer to the Help topics in the Desktop DNA program.
- ♦ **Deferred:** Deferred migrations save your personality file on your desktop, local or network drive, writable CD/DVD, or any external media. You can transfer your personality file to your destination workstation using a Desktop Management Application object. This type of migration is useful if you are not changing the workstation, but simply installing a new operating system or implementing a disaster-recovery process. The focus of this guide is to help you use ZENworks Personality Migration to create a template to collect users' DNA files, store them in a network location, and then collect and apply the DNA files using two Desktop Management Application objects.

Preparing the Server for Personality Migration

2

A functioning Novell® ZENworks® 7 Desktop Management environment is a prerequisite for the ZENworks/Desktop DNA personality migration integration. This document is written with ZENworks 7 Desktop Management as the basis; the concepts could be used with earlier versions. For installation instructions for Desktop Management, see the *Novell ZENworks 7 Desktop Management Installation Guide*.

In the following sections, you create a directory structure to store the Desktop DNA templates and DNA personality files. We recommend that you control Rights or Permissions to these directories by using groups.

The directories you create can be placed on a single server (the DNA server) or on multiple servers, depending on your LAN/WAN environment, the scale of the migration, and the ongoing requirements for life cycle management.

The following sections contain additional information:

- ♦ [Section 2.1, “Creating the Desktop DNA Template Store,” on page 11](#)
- ♦ [Section 2.2, “Creating the Personality Migration Personality Store,” on page 12](#)

2.1 Creating the Desktop DNA Template Store

Desktop DNA templates can be thought of as policies defining the collection of settings and data from legacy workstations. Step-by-step instructions to create a template are provided in [“Using the DNA Template Editor to Create the Template” on page 21](#).

You create DNA templates on the staging workstation and then store them in a network location that is accessible to users. You can store the templates on the DNA server or on another NetWare®, Linux, or Windows server.

To create the template store on a NetWare, Windows, or Linux server:

- 1 Create a `\ddna` directory.

This directory will hold the ZENworks Personality executable file, DNA templates, and workstation DNA personality files. You should not use the `\sys:` volume to house the `\ddna` directory.

- 2 Copy the contents of the `\ddnarun` directory from the *ZENworks Personality Migration* CD into the `\ddna` directory on your server.
- 3 Create a `\ddna\templates` directory to be used as the storage location for Desktop DNA templates.
- 4 Provide users with appropriate rights to this directory:
 - ♦ For NetWare, provide Read and File Scan rights to users and Write, Read, and File Scan rights to OS and migration administrators.
 - ♦ For Windows, share the `\ddna` directory as DDNA and provide basic Read rights to users and Full Control rights for OS and migration administrators.

- ♦ For Linux, create a Samba share to `\ddna` and provide Read and Write rights to OS and migration administrators and full control and ownership rights on the file system.

2.2 Creating the Personality Migration Personality Store

A typical personality should be approximately 10–15 MB in size (assuming storage of Microsoft* Office settings, templates, and so forth). The size of the personality can grow to exceed 500 MB if user data is consolidated and relocated.

You should monitor the size and content of personalities and adjust templates as required.

Personalities can be stored anywhere, including the user home directory or Novell iFolder[®]. This guide discusses using a dedicated storage server for personality storage. Future integration solutions will include integration with NetWare and Windows user home directories and also Novell iFolder.

The following sections contain additional information:

- ♦ [Section 2.2.1, “Creating the Personality Store on a NetWare Server,” on page 12](#)
- ♦ [Section 2.2.2, “Creating the Personality Store on a Windows Server,” on page 12](#)
- ♦ [Section 2.2.3, “Creating the Personality Store on a Linux Server,” on page 12](#)

2.2.1 Creating the Personality Store on a NetWare Server

- 1 On a NetWare server that users have access rights to, create a `\ddna\data` directory.
- 2 Provide users with Read, File Scan, and Write rights to this directory.

We recommend that you use group membership to control access to this directory.

2.2.2 Creating the Personality Store on a Windows Server

- 1 On a Windows server that users have access rights to, create a `\ddna\data` directory.
- 2 Share the `\ddna\data` directory as DDNADATA.
- 3 Provide users with Read and Write permissions to this share.

We recommend that you use group membership to control access to this share.

2.2.3 Creating the Personality Store on a Linux Server

- 1 On a Linux server that users have access rights to, create a `\ddna\data` directory.
- 2 Share the `\ddna\data` directory as DDNADATA on Samba.
- 3 Provide users with Read and Write permissions to this share.

We recommend that you use group membership to control access to this share.

Preparing Workstations for Personality Migration

3

The following sections contain information about this topic:

- ♦ [Section 3.1, “Personality Migration Management Workstation,” on page 13](#)
- ♦ [Section 3.2, “User Workstations,” on page 13](#)
- ♦ [Section 3.3, “User Login Restriction,” on page 14](#)

3.1 Personality Migration Management Workstation

The Novell® ZENworks® 7 Personality Migration with SP1 management console is a Windows workstation typically used by the OS deployment and migration administrators. In addition to installing Personality Migration on this workstation, you should also install ConsoleOne® to allow management and creation of Desktop Management Application objects. For installation instructions for ConsoleOne, see the *Novell ZENworks 7 Desktop Management Installation Guide*.

In the previous version of ZENworks Personality Migration, in order to create a Personality Migration template that contained the application settings for all of the applications used in your organization, you were required to set up a staging workstation that had each corporate and line-of-business application locally installed. You then used this workstation to create a Desktop DNA template that defined the personality and application settings to be subsequently collected from individual workstations in your organization.

In ZENworks 7 Personality Migration with SP1, the Desktop DNA Template Editor is included. This means that you no longer need to set up a workstation that has each corporate and line-of-business application locally installed. You can use the Template Editor to define personality settings for most of the applications used in your environment. For information about installing and using the Template Editor, see [Chapter 4, “Installing ZENworks Personality Migration,” on page 15](#) and [Chapter 5, “Using the DNA Template Editor to Create the Template,” on page 21](#).

3.2 User Workstations

To collect and apply workstation personalities using ZENworks Personality Migration, user workstations need to be able to access the `\ddna` directory you created in [“Preparing the Server for Personality Migration” on page 11](#).

User workstations must also have Microsoft XML parser 3 installed. Windows XP Professional workstations and workstations running Microsoft Internet Explorer 6 should already have XML parser 3 installed. If user workstations do not have XML parser 3 installed, you can download it at the [Microsoft Download Center \(http://www.microsoft.com/downloads/details.aspx?familyID=4a73fcf1-98eb-4709-829b-f4de94f5b5fe&displaylang=en\)](http://www.microsoft.com/downloads/details.aspx?familyID=4a73fcf1-98eb-4709-829b-f4de94f5b5fe&displaylang=en).

You can install the XML parser by creating a Desktop Management Application object to install the XML parser system.

3.3 User Login Restriction

The user whose workstation is to run `desktopdna.exe` must be logged in as a local workstation administrator whether `desktopdna.exe` is launched from the local machine or from a server location (whether run manually or from an Application object distributed by the Novell Application Launcher™).

Installing ZENworks Personality Migration

4

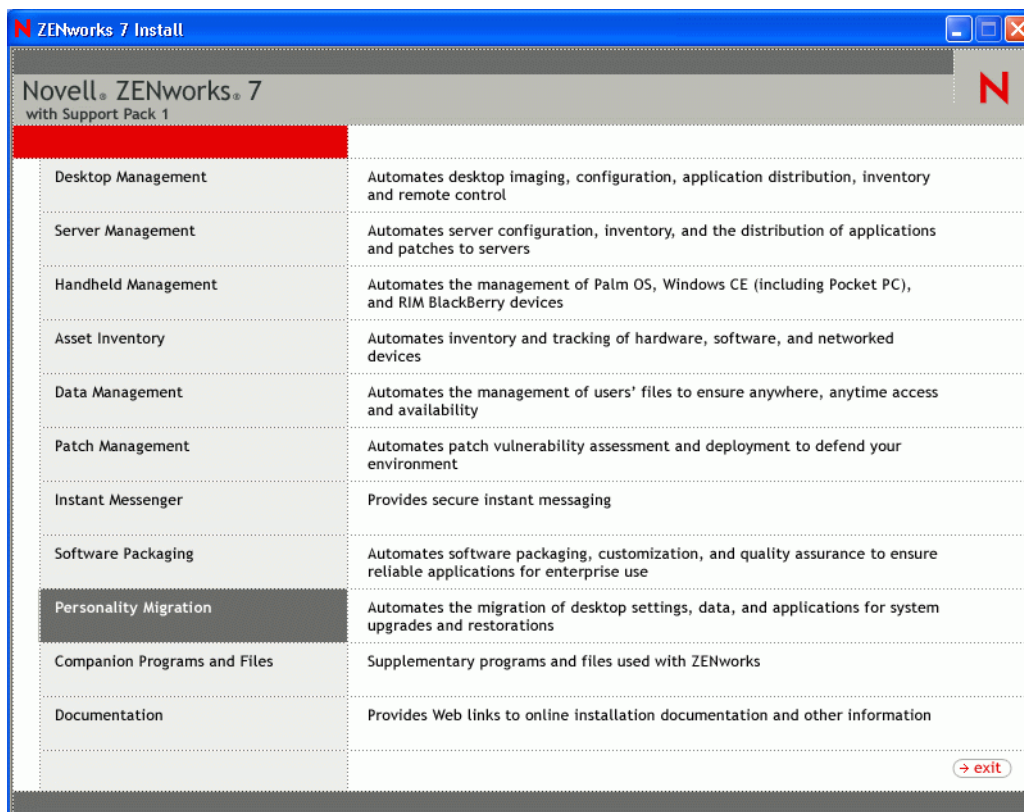
You can run Novell® ZENworks® 7 Personality Migration with SP1 from a Windows server or from a Windows workstation. You use either the server or the workstation to open the Desktop DNA Template Editor to create the personality templates that collect users' workstation personalities.

If you want to run the Desktop DNA Template Editor from a Windows server that is accessible to users, follow the directions in this section. If you want to install Personality Migration on a Windows server, you should install it in the \ddna directory that you previously created so that the program files, templates, and personality files are in one location. However, if you do not want to run the Template Editor from the server, the steps you performed in [Section 2.1, "Creating the Desktop DNA Template Store,"](#) on page 11 copied the necessary files to the server.

You can also install Personality Migration on the Personality Migration management workstation from which you will create personality templates.

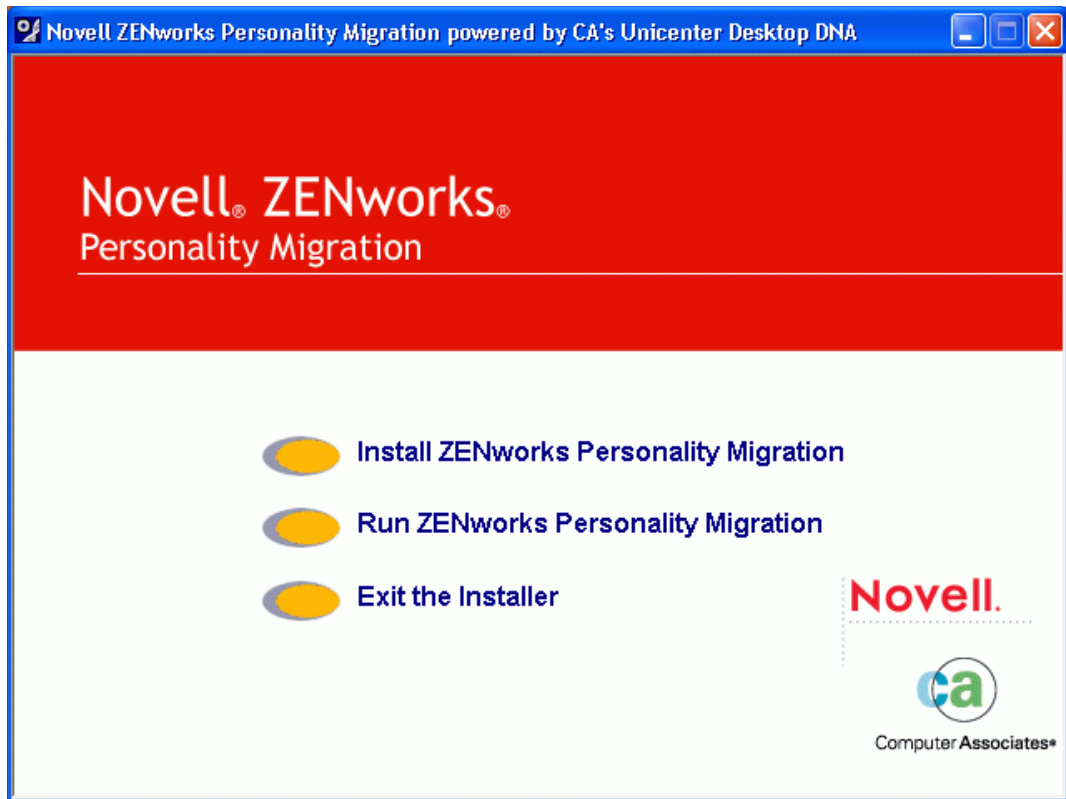
To install Personality Migration:

- 1 Insert the *Novell ZENworks 7 Personality Migration with SP1* program CD into the CD drive.



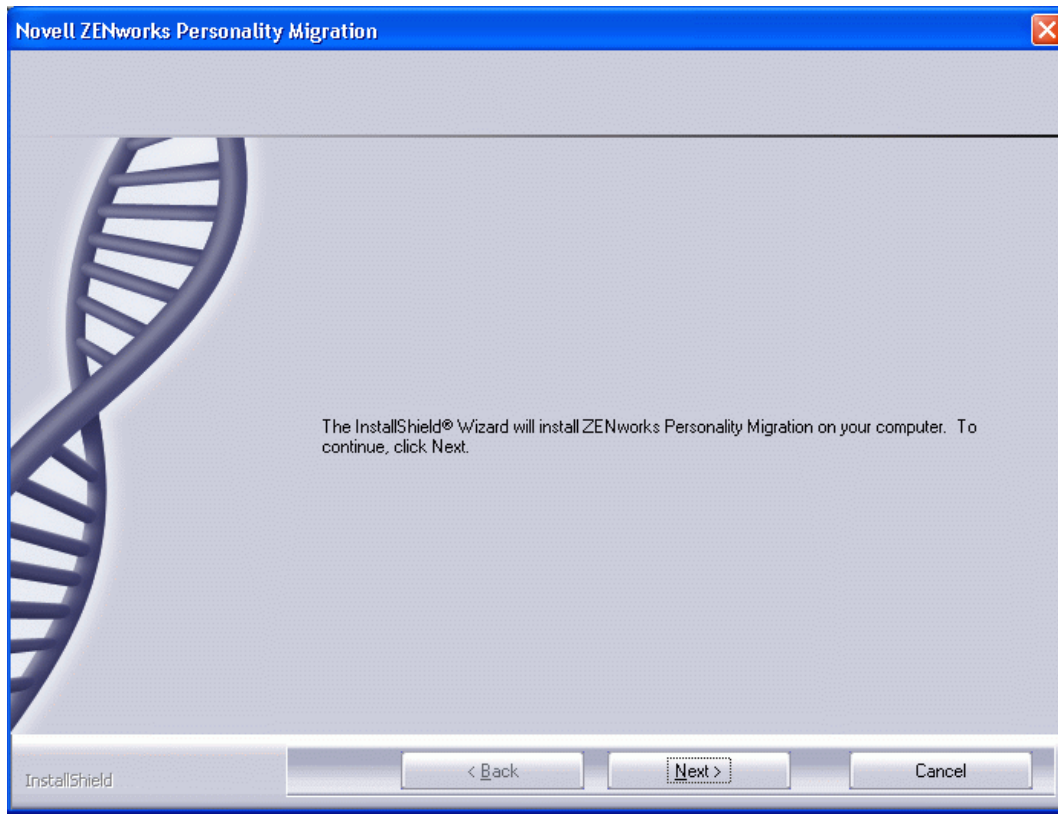
- 2 Click *Personality Migration*.

3 Click *ZENworks Personality Migration*.



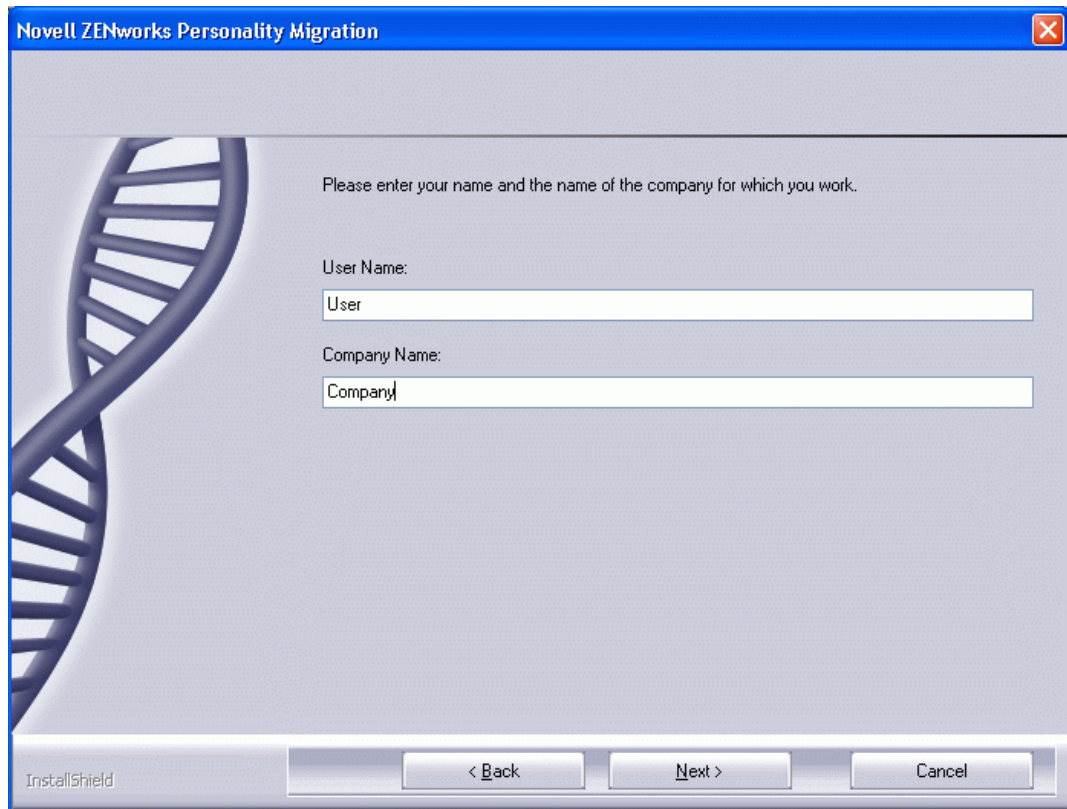
4 Click *Install ZENworks Personality Migration*.

5 Choose a setup language and click *Next*.



6 Click *Next*.

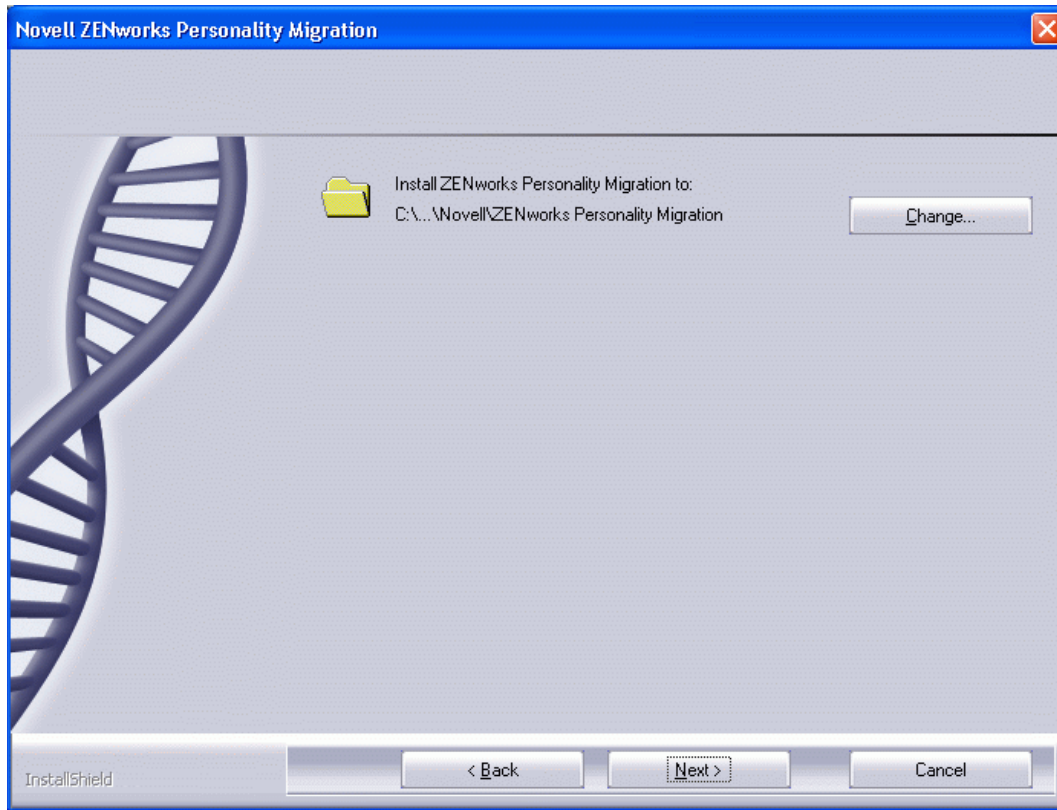
7 Review the license agreement and click *I Agree* if you accept the terms of the agreement.



The image shows a Windows-style dialog box titled "Novell ZENworks Personality Migration". The dialog has a blue title bar with a close button in the top right corner. The main area has a light blue background with a large, stylized DNA double helix graphic on the left side. The text inside the dialog reads: "Please enter your name and the name of the company for which you work." Below this text are two input fields. The first is labeled "User Name:" and contains the text "User". The second is labeled "Company Name:" and contains the text "Company". At the bottom of the dialog, there are three buttons: "< Back", "Next >", and "Cancel". The "InstallShield" logo is visible in the bottom left corner of the dialog's content area.

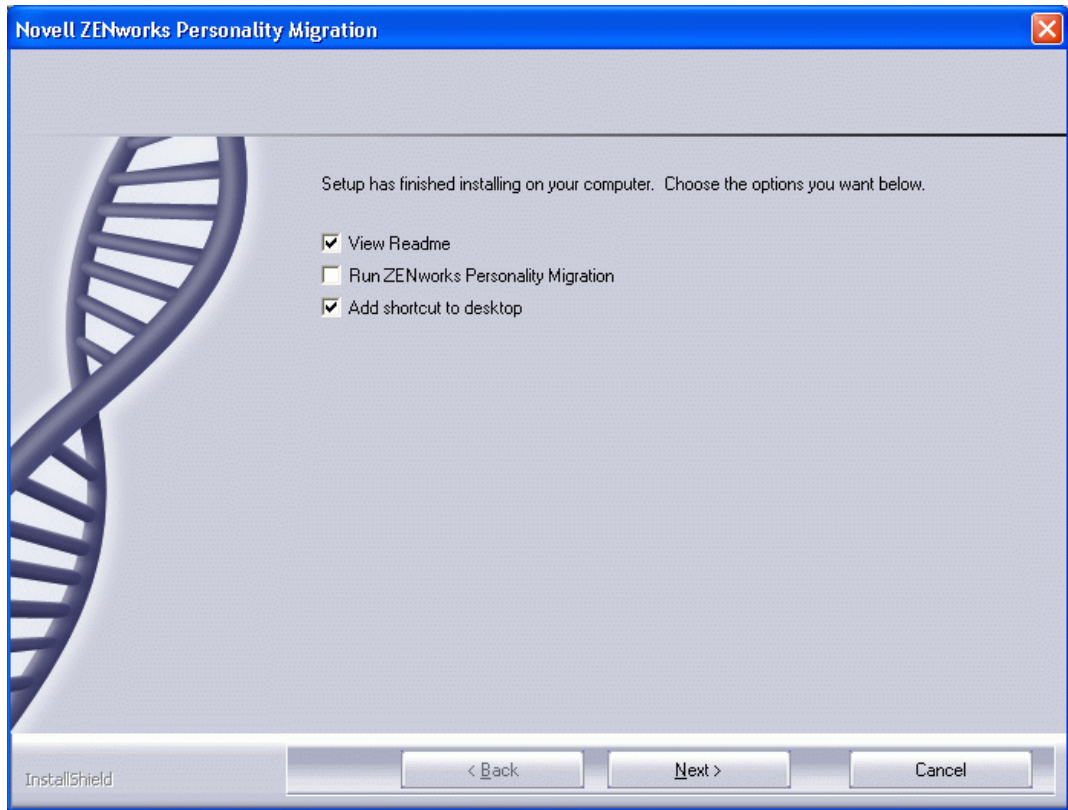
8 Fill in the user and company name, then click *Next*.

- 9 Click *Typical*, *Compact*, or *Custom* to indicate the type of installation you want, then click *Next*.



- 10 Choose where you want to install ZENworks Personality Migration by clicking *Change*, or keep the default location.
- 11 Click *Install*.

- 12 Select from the following options: *View Readme*, *Run ZENworks Personality Migration*, and *Add shortcut to desktop*.



- 13 Click *Next*, then click *Finish*.

Using the DNA Template Editor to Create the Template

5

Each customer can have specific requirements for his or her personality migration. It is outside the scope of this guide to define the various implications and parameters for each migration.

The main factors that drive the complexity and, ultimately, the size and scope of the personality migration, are whether the legacy environment is well managed, whether the customer has an existing standard operating environment, how many laptops and remote users are part of the migration project, and how much data is stored locally on workstations as opposed to network storage.

Desktop DNA templates can be thought of as policies defining the collection of settings and data from the legacy workstation.

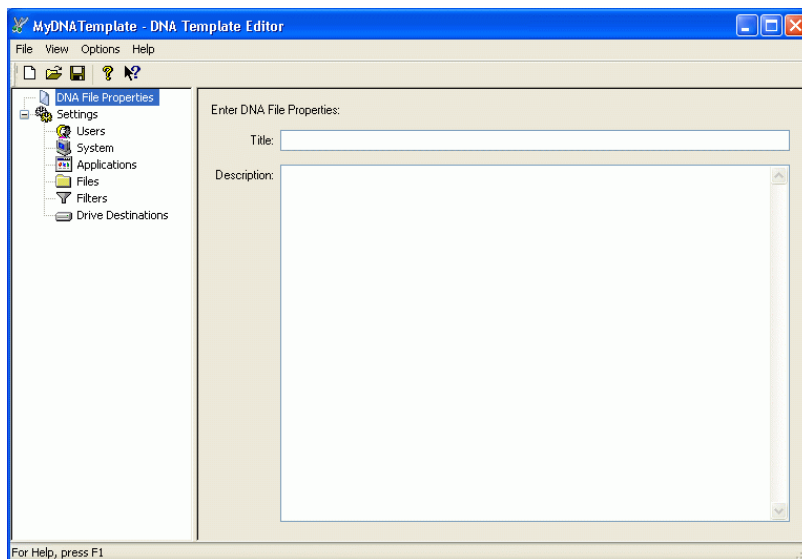
The following sections contain additional information:

- ♦ [Section 5.1, “Creating a DNA Template,” on page 21](#)
- ♦ [Section 5.2, “Configuring the Template,” on page 22](#)
- ♦ [Section 5.3, “Working with Filters,” on page 28](#)
- ♦ [Section 5.4, “Re-enabling the Muscle Migration Function,” on page 32](#)

5.1 Creating a DNA Template

To create the Desktop DNA template using the Template Editor:

- 1 Open the DNA Template Editor from the *Start* menu.



- 2 Specify a title and description for your file properties.

You can view the title and description from the Open a DNA File page by right-clicking the DNA file name. They are also visible in the DNA Explorer.

3 Configure the settings for your template.

Users: The Users page lets you add or remove user profiles from your template. Unless you are a system administrator and logged into a system supporting multiple profiles, only the current user's settings are migrated. Current User is designated as the user who is logged into the computer at the time of the migration.

System: The System page lets you add settings specific to the operating system.

Applications: The Application page lets you select settings specific to the applications and application settings.

Files: The Files page lets you specify the files and folders from the source system.

Filters: The Filters page lets you create filters to implement a search for files, folders, or drives.

Drive Destinations: The Drive Destinations page lets you choose how to redirect drives.

NOTE: For more information about configuring your template, see [Section 5.2, "Configuring the Template," on page 22](#), or see the online Help in the DNA Template Editor.

4 To create the Desktop DNA template, click *File > Save*.

5 Use the default template name, `mydnatemplate.dtf`, or give the template a descriptive name and save the file on the server in the `\ddna\templates` directory that you created in [Section 2.1, "Creating the Desktop DNA Template Store," on page 11](#).

6 Click *Save*.

For the purposes of this guide, after you save the template, you are ready to create the Desktop Management Application objects to collect and apply the personality information. See ["Creating the Application Object to Collect the Personality" on page 35](#) and ["Creating the Application Object to Apply the Personality" on page 39](#) for more information.

7 Click *File > Exit*.

5.2 Configuring the Template

When you create a template, you select settings for users, the system, applications, files, filters, and drive destinations.

The following sections provide additional information:

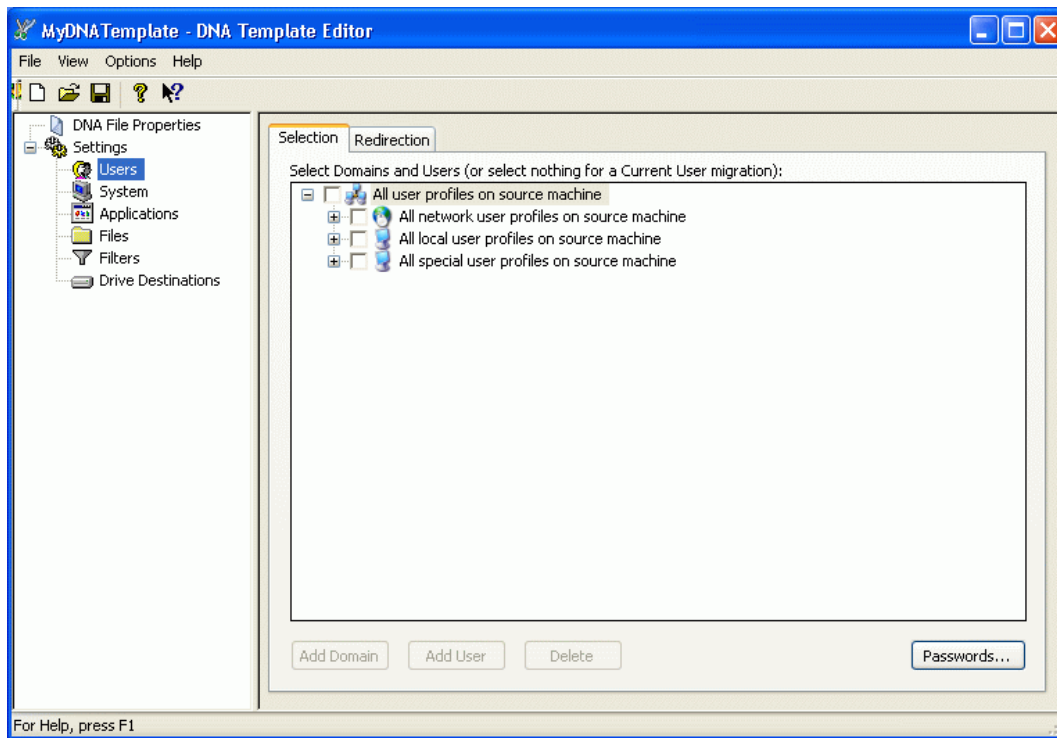
- ◆ [Section 5.2.1, "Configuring Users Settings," on page 22](#)
- ◆ [Section 5.2.2, "Configuring System Settings," on page 24](#)
- ◆ [Section 5.2.3, "Configuring Applications Settings," on page 25](#)
- ◆ [Section 5.2.4, "Configuring Files Settings," on page 26](#)
- ◆ [Section 5.2.5, "Adding Drive Destinations," on page 27](#)

5.2.1 Configuring Users Settings

To configure the *Users* settings for the template if you want to migrate more than the current user:

NOTE: You must have full administrator privileges to migrate multiple users in Windows NT or Windows 2000.

- 1 Open the DNA Template Editor from the *Start* menu.
- 2 Click *Users* in the left pane of the Template Editor window.



- 3 Select the domains and users for migration.

Network Users: The network user branch displays users belonging to NT Domains or to Active Directory*. If both types of directory systems are implemented, they are both displayed. When you expand an NT Domain branch, only users display under the Domain name. If you expand an Active Directory branch, Active Directory containers display along with the users beneath the containers. If you migrate User Profiles associated with domain accounts (or Active Directory accounts), you must ensure that the user logged in at the time of the migration has administrative rights locally and is a member of the Domain Admin group. Having a user with these permissions logged in during migration allows the creation of accounts on the domain if you are changing domain membership.

Local Users: The local users branch lets you add local user profiles. If you migrate user profiles associated with local accounts, you must ensure that the user logged in at the time of migration has administrative rights locally. Having a user with these permissions logged in during migration allows the creation of accounts on the local system. Additionally, you can specify how passwords are created for new accounts by clicking the *Passwords* button.

Special Users: The special users branch lets you add special local user profiles and is included for selecting the administrator or default user on Windows NT* or Windows 2000 systems. The default user profile settings can be migrated so that all subsequent users logging in to a Windows NT or Windows 2000 system get specified default or applications settings.

- 4 To assign a password, click *Passwords*.

4a Select one of the following:

- ♦ *Use no passwords*
- ♦ *Use a common password*
- ♦ *Use randomly generated passwords*

4b Click *Specify* to enter a password or options for the randomly generated password, then click *OK*.

Select *Users must change password at next logon* to prompt users for a password.

5 To redirect users, select the users you want to migrate by clicking the check box to the left of the username.

6 Click the *Redirection* tab.

7 Double-click the destination column of the domain or Active Directory container branch.

8 Specify the new domain or Active Directory container name.

All users under the specific user branch are relocated to the new domain name or Active Directory container on the destination unless the user is specifically redirected to a different domain or Active Directory container.

9 To redirect all users in a specific domain or Active Directory container, double-click the users' destination column.

You can specify a different domain or Active Directory container and a new username. The format should be *NT Domain name or Active Directory container name\User Name*.

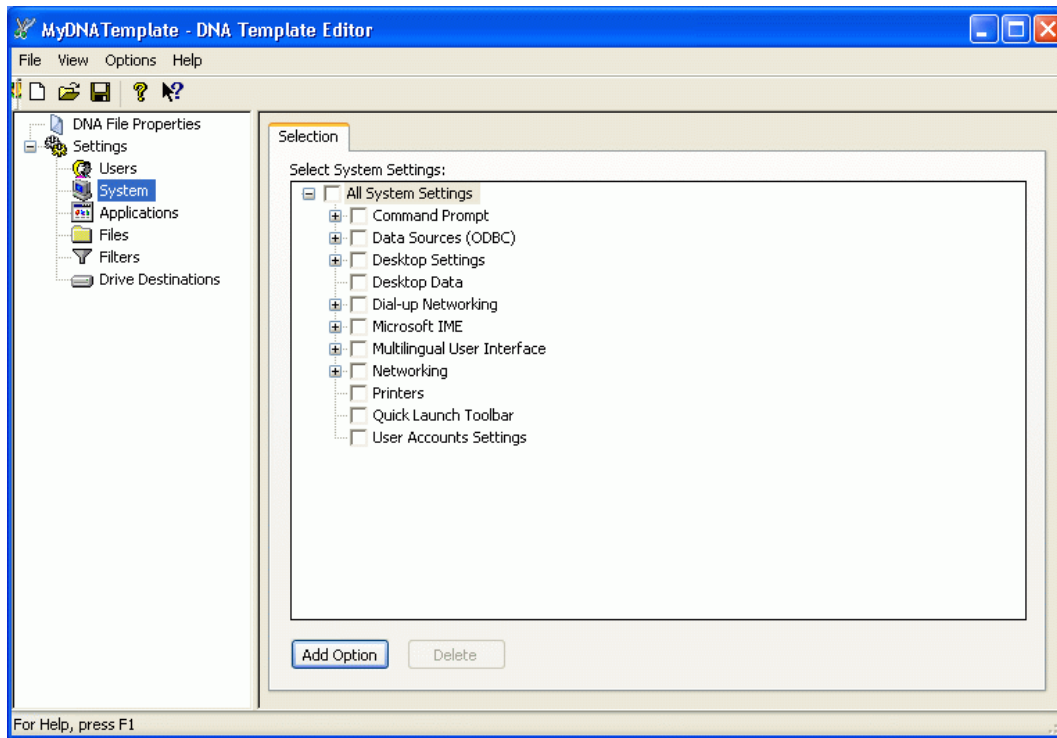
Users identified for the destination cannot be mixed wildcards, but must use the * wildcard to replace an entire string

5.2.2 Configuring System Settings

To configure System settings:

1 Open the DNA Template Editor from the *Start* menu.

- 2 Click *System* in the left pane of the Template Editor window.



- 3 Select the system settings.
- 4 To add a setting group, click *Add Option* and type the name of the option group.
- 5 To add a setting, expand the list to show all the system settings in a category, click *Add Option*, and type the name of the setting.

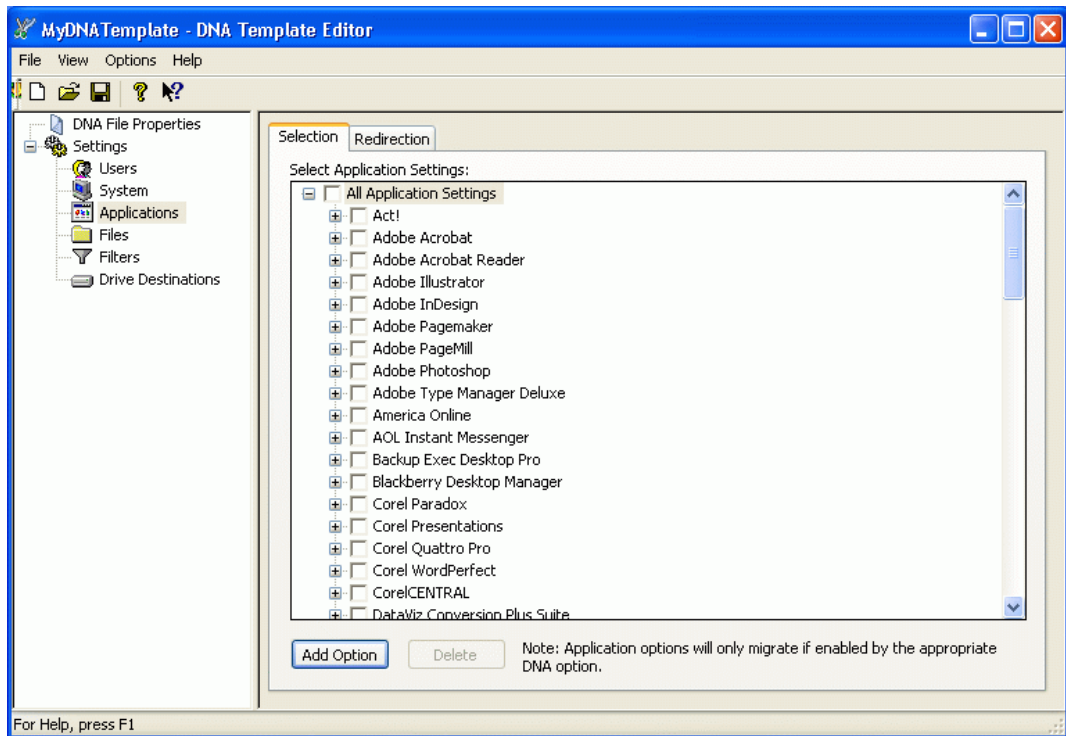
Unless you are certain you want to migrate everything in a category, be sure to expand the list to display all the items and subcategories.

5.2.3 Configuring Applications Settings

To configure Applications settings:

- 1 Open the DNA Template Editor from the *Start* menu.

- 2 Click *Applications* in the left pane of the Template Editor window.



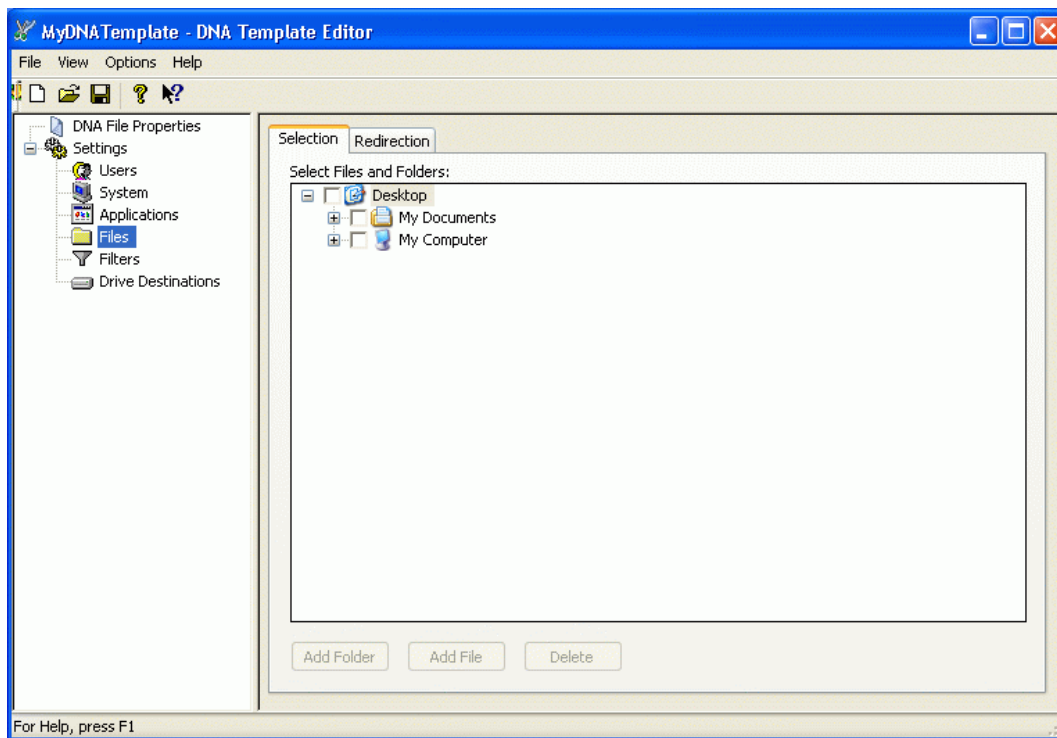
- 3 Select the applications.
- 4 To add an application, click *Add Option* and type the name of the option group.
- 5 To add a setting, expand the list to show all the application settings in a category, click *Add Option*, and type the name of the setting.
- 6 To redirect an application:
 - 6a Select the application.
 - 6b Click the *Redirection* tab.
 - 6c Double-click the *Destination* column.
 - 6d Enter the path where you want to redirect the application or click *Browse* to locate the path.
 - 6e Click *OK*.
 - 6f Repeat steps 6a–6e for each additional application.

5.2.4 Configuring Files Settings

To configure the Files settings:

- 1 Open the DNA Template Editor from the *Start* menu.

- 2 Click *Files* in the left pane of the Template Editor window.



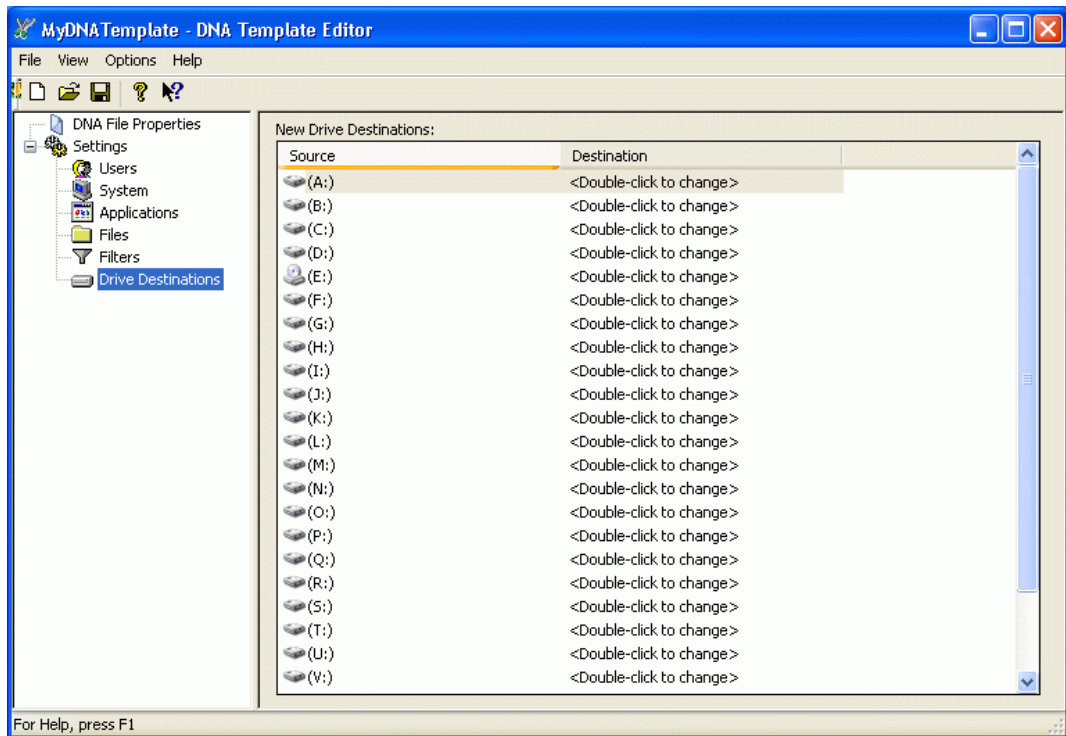
- 3 Select the files and folders.
- 4 To add a folder, click *Add Folder* and enter a name for the new folder.
- 5 To add a file, click *Add File* and enter a name for the new file.
- 6 To redirect a file or folder:
 - 6a Select that file or folder
 - 6b Click the *Redirection* tab.
 - 6c Double-click the *Destination* column.
 - 6d Enter the path where you want to redirect the file or folder or click *Browse* to locate the path.
 - 6e Click *OK*.
 - 6f Repeat steps 6a–6e for each additional file or folder.

5.2.5 Adding Drive Destinations

To add drive destinations:

- 1 Open the DNA Template Editor from the *Start* menu.

- 2 Click *Drive Destinations* in the left pane of the Template Editor window.



- 3 Double-click the *Destination* column.
- 4 Select the drive letter from the drop-down menu.

NOTE: Files on the source system that are stored in folders recognized by the Windows Registry are automatically migrated to the equivalent folder on the destination system. If you want to migrate them elsewhere, add file and folder destinations in the Files category.

5.3 Working with Filters

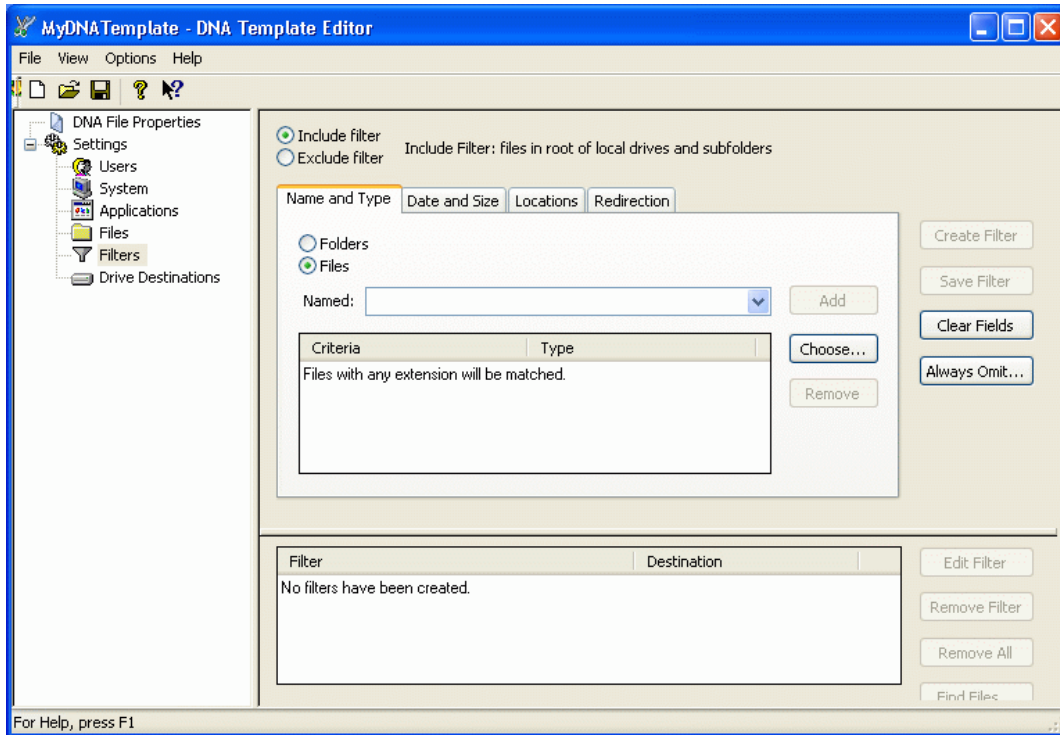
A filter lets you identify file extensions that you want to include in a migration. However, you might want to include those files only if they are stored in a specific folder or if they were created after a certain date. Suppose you want to include some files with a certain extension, but not if they are in a specific directory. Or what if you want to include all the files in a certain folder, but exclude others if they are in a subfolder? Novell ZENworks 7 Personality Migration with SP1 includes advanced filtering that allows you to identify file extensions and folders that you want to include or exclude in a migration. The *Filters* dialog box lets you create and test an advanced filter to make sure you can find the files and folders you are looking for before you save the filter settings.

ZENworks Personality Migration allows you to create the following types of filters:

- ◆ *Include* filters specify the files and folders to migrate.
- ◆ *Exclude* filters specify files and folders you do not want to migrate.
- ◆ *Omit* filters specify folders that you do not want to include. Files in these folders and the folders themselves are not included in the search. The omit filter criteria is specific to a filter.
- ◆ *Always Omit* filters lets you identify folders that you never want to include.

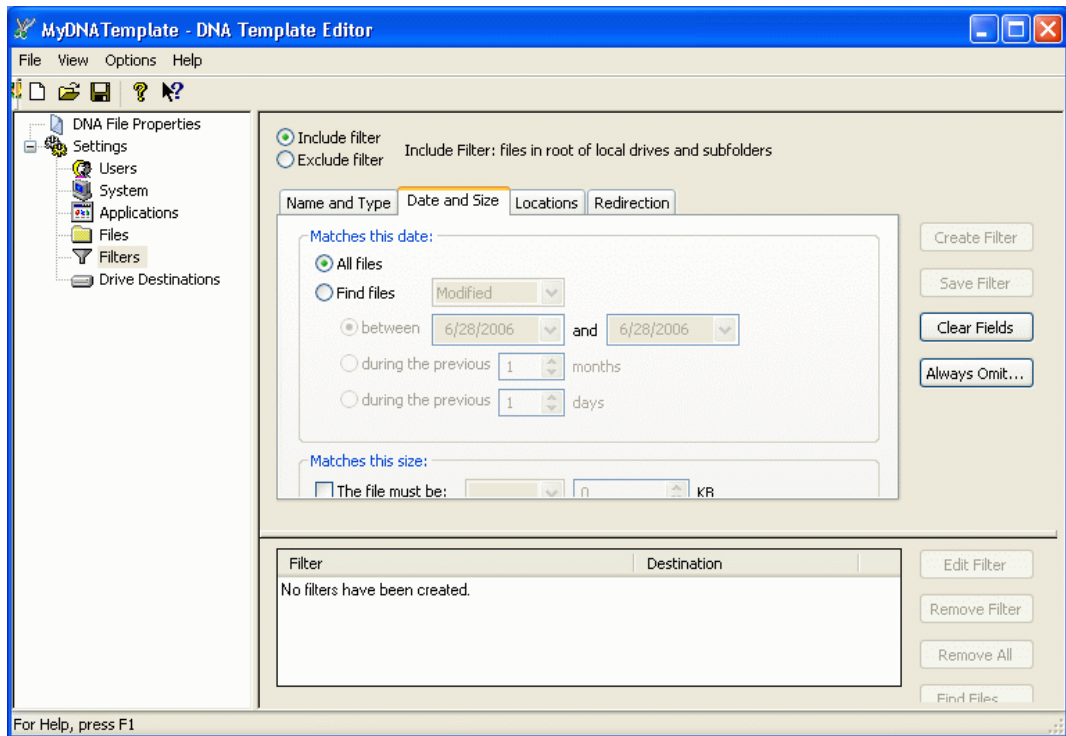
To create a filter:

- 1 Open the DNA Template Editor from the *Start* menu.
- 2 Click *Filters* in the left pane of the Template Editor window.



- 3 Click *Include filter* or *Exclude filter* depending on the type of filter you want to create.
- 4 Click *Folders* or *Files* depending on which one the filter applies to.
- 5 Click *Named* to display a list of file extensions, or select one from the drop-down list.
Only files and folders added to the list by clicking *Add* appear in the drop-down list.
- 6 Click *Choose* to display a list of file extensions, or type the extension in the *Named* field.
- 7 Click *Add* to put the extension in the *Criteria* list.
If you add an extension to the *Criteria* list and you later want to remove it, select the extension and click *Remove*.

8 Click the *Date and Size* tab.

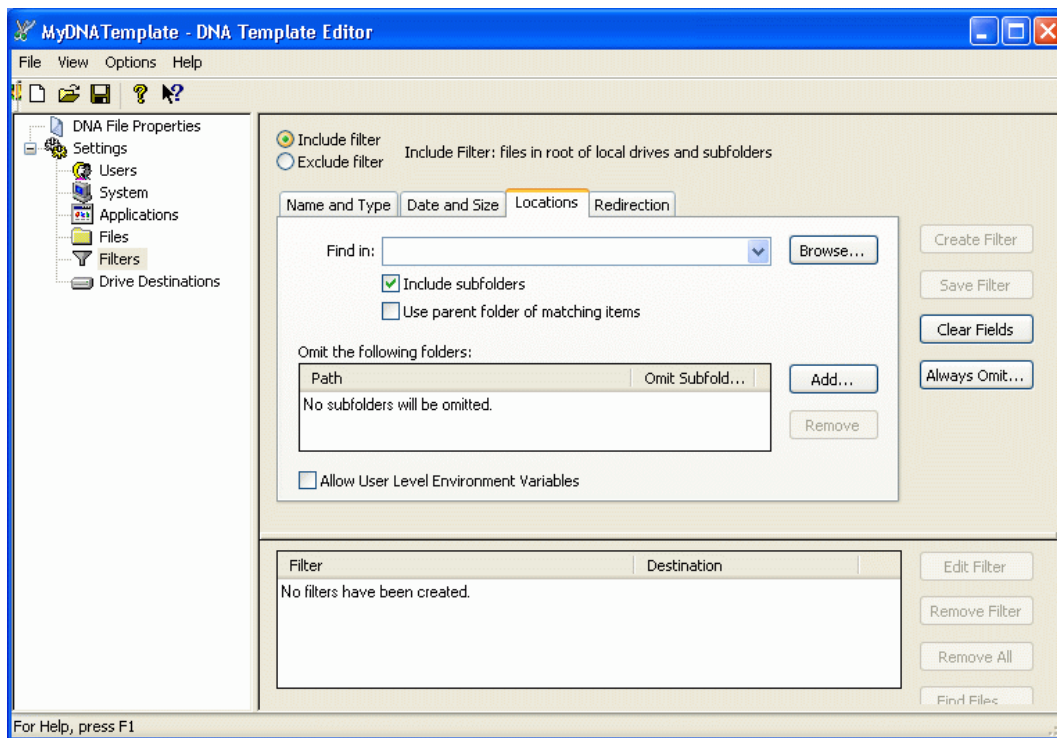


9 Fill in the fields:

Matches this date. Select whether you want to search for all files or find those created between specified dates.

Matches this size. Select whether you want to filter by file size.

- 10 Click the *Locations* tab.



- 11 Specify the name of the drive or folder to search in the *Find in* field, or browse to select a drive or folder to search.

Only drives and folders that you have added to the list by clicking *Add* appear when you click the drop-down list. You can also click *Browse* to specify a drive or folder.

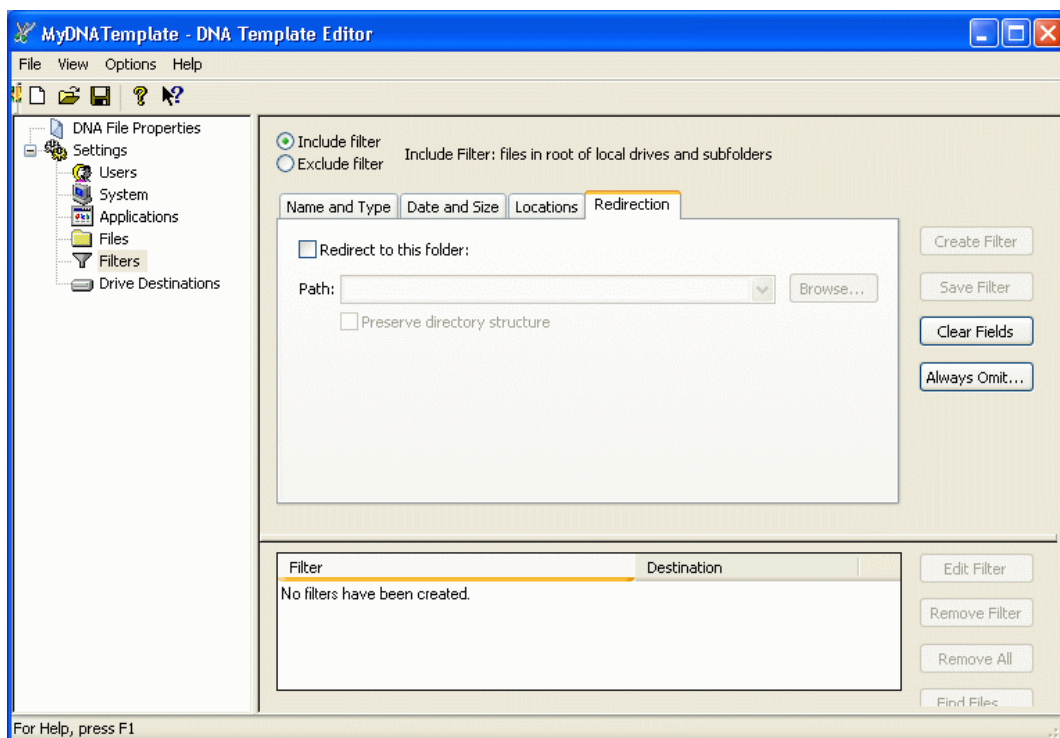
- 12 Click *Include* subfolders to include the subfolders of the selected folder.

- 13 Click *Use parent folder of matching items* if you want to migrate the entire contents of the folder where the file matching the filter criteria is located.

You cannot redirect filters where you have selected *Use parent folder of matching items*. You can redirect other filters. If you want to redirect the files and folders captured by a filter where you have selected *Use parent folder of matching items*, you need to redirect the folders individually by expanding the file and folder tree.

- 14 Select whether you want to omit specific folders from individual filter processing or from all filter processing for a migration.

- 15 Click the *Redirection* tab.



- 16 To use redirection, click *Redirect to this folder* and type a path, or use the *Browse* button to select a path.
- 17 Click *Create Filter*.
The filter name appears in the pane at the bottom of the screen.

NOTE: Once a filter has been created, you can test it by clicking on the filter name in the pane at the bottom of the screen and clicking *Find Files*.

To edit filters:

- 1 Click the filter name in the pane at the bottom of the screen.
- 2 Click *Edit Filter*.
- 3 Make the desired changes.
- 4 Click *Save Filter*.

5.4 Re-enabling the Muscle Migration Function

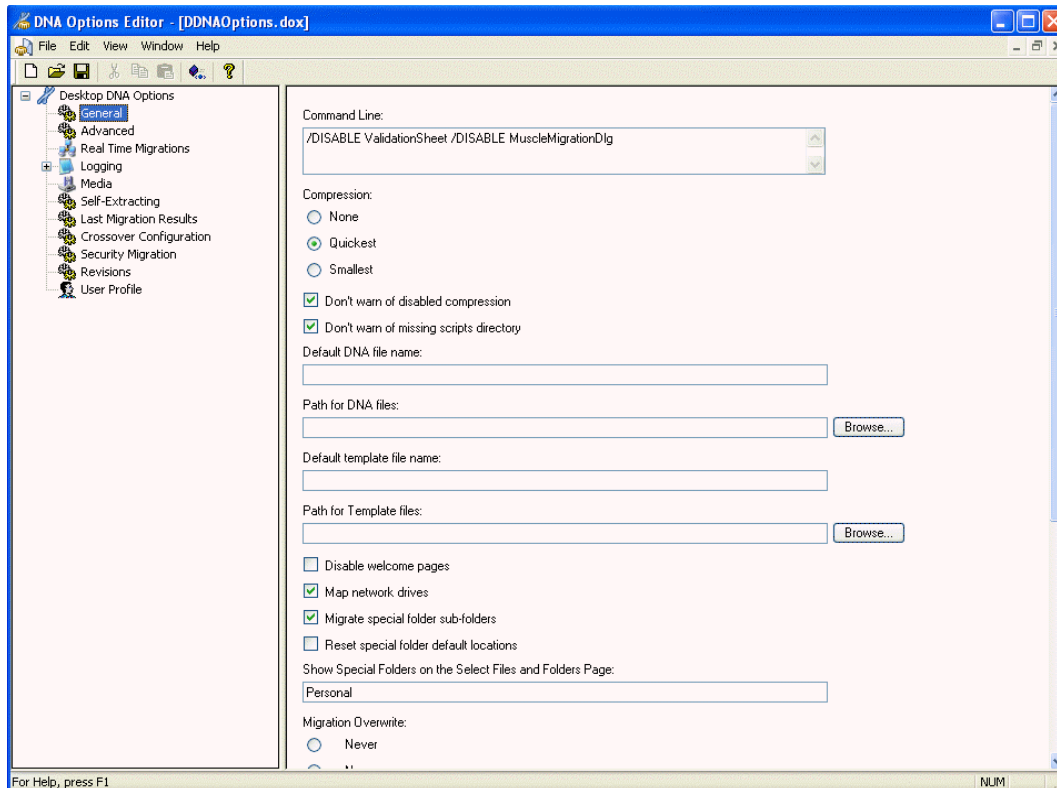
Muscle Migration, the Desktop DNA Personality Migration function that lets you migrate applications that do not have scripts available, is disabled by default in ZENworks 7 Personality Migration with SP1.

NOTE: Re-enabling the Muscle function in Personality Migration affects only the Personality Migration interface and does not re-enable Muscle Migration in the template.

To re-enable the Muscle Migration using the DNA Options Editor:

- 1 Click *Start > Programs > Novell > ZENworks > ZENworks Personality Migration > Migration Toolkit > DNA Options Editor*.
- 2 Navigate to `c:\program files\novell\zenworks\personality migration` and open the `DDNAOptions.dox` file, then click *General* in the left pane of the Options Editor window.

NOTE: The settings file that you need to edit to re-enable the Muscle Migration function is created after you run and exit Personality Migration for the first time.



- 3 Delete the following from the *Command Line* window:
`/DISABLE MuscleMigrationDlg`
- 4 From the *File* menu, click *Save*, then click *Exit*.

To re-enable Muscle Migration manually:

- 1 Navigate to the directory where Personality Migration is installed by default: `c:\program files\novell\zenworks\personality migration`.
- 2 In the installation directory, locate the `ddnaoptions.dox` file.

NOTE: The settings file that you need to edit to re-enable the Muscle Migration function is created after you run and exit Personality Migration for the first time.

- 3 Right-click the file, select *Open With*, then select *Notepad* (or any other text editor).

- 4** In the Command Line option section (the first section) of the file, select `/Disable MuscleMigrationDLG`, then delete this selection.
Make sure that you do not delete any tags (for example, `</Value>`) surrounding this text.
- 5** In the text editor, click *File > Save* to save the modified `ddnaoptions.dox` file in its installed location.

Creating the Application Object to Collect the Personality

6

The Application object you create in the following steps collects the DNA personality from associated workstations and stores the DNA personality files on the network. You can use the DNA personality files to restore users' personality settings after upgrading to a new OS or replacing hardware, or you can store the DNA personality files in a network location as part of your disaster-recovery process.

To create the Application object:

- 1** In ConsoleOne[®], right-click the container that you want to create the Application object in, click *New*, then click *Object*.
- 2** Click *Application*, then click *OK*.
- 3** In the New Application Object dialog box, select the *Simple Application (No .AOT/.AXT/.MSI File)* option, then click *Next*.
- 4** In the *Object Name* field, type a name for the Application object, for example CollectDNA, then click *Next*.
- 5** In the *Path to File* field, browse to or type the path to the location on the network from which the application's executable file (`desktopdna.exe`) will be run. Include the executable file in the path.
You need to enter a UNC path (with a server name or IP address).
- 6** Click *Next*, then define the system requirements that a workstation must meet before the application runs:
 - 6a** Click *Add*, then select the type of requirement you want to define.
 - 6b** Fill in the information for the requirement, then click *OK* to add the requirement to the list.
- 7** Click *Next*, then associate the Application object with the users or workstations on which you want the application to run:
 - 7a** Click *Add*, then browse for and select User or Workstation objects.
You can also select Group objects, Workstation Group objects, and container objects (Organizational Unit, Organization, or Country). If you select a container object, you are given the choice of associating all the container's User and/or Workstation objects with the application.
 - 7b** After you add the user or workstation to the list, select the *Force Run* check box.
Selecting the *Force Run* check box runs Desktop DNA as soon as Novell[®] Application Launcher[™] or Workstation Helper starts and the CollectDNA Application object is run and the personality is taken.
- 8** Click *Next*, review the Application object settings, click the *Display Details After Creation* check box, then click *Finish*.
- 9** Click the *Run Options* tab, then click *Application*.
- 10** In the *Parameters* field, type the following:

```
%DDNA_ACTION% %DDNA_DATA%\%DDNA_USER%\%DDNA_WS% /T
%DDNA_SOURCE%\Templates\%DDNA_TEMPLATE% /X %DDNA_SILENT%
```

For example, using the sample directories explained above:

```
/D \\server1\vol\ddna\data\%DDNA_User%\%DDNA_WS% /T
\\server1\vol\ddna\templates\mydnatemplate.dtf /X %DDNA_SILENT%
```

The following example runs a migration dump while the user interface is active:

```
/M /D \\server1\vol\ddna\data\%DDNA_User%\%DDNA_WS% /T
\\server1\vol\ddna\templates\mydnatemplate.dtf /X %DDNA_SILENT%
```

The following table contains information about each switch not defined using an application macro:

Switch	Description	Parameters
/T	Uses a template to specify migration settings.	Template file to use for this migration. Use a UNC path to specify the location.
/M	Starts the migration in user interface mode.	(Optional switch.) /M cannot be used with the /Q switch (silent mode). This switch should be used only in conjunction with the /D switch (to create a DNA file) or with the /A switch (to apply a specified DNA file).
/X	Exits Desktop DNA ZENworks Edition when migration is completed (unless an error occurs).	

The following table contains information about each macro you can define for the *CollectDNA* application parameter.

Macro	Value	Description
DDNA_ACTION	/D	Dumps or takes the personality of the workstation. Make sure that this value immediately precedes the argument defining the DNA file you want to create of the source system.
DDNA_DATA	UNC path to ddnadata share or directory	Specifies the directory where the personality file will be copied to or retrieved from.
DDNA_SILENT	/Q or Empty	/Q: Silently performs the action. Empty: Provides a progress dialog box as the action is performed.
NOTE: This macro must be empty if the /M switch is specified.		
DDNA_SOURCE	UNC path to ddnarun share or directory	Directory where the Desktop DNA executable is located.
DDNA_TEMPLATE	Template file	Filename of the template file to use

Macro	Value	Description
DDNA_USER	%CN%	Username of the current user
DDNA_WS	%DNA_MACHINE_NAME%	Workstation machine name

11 Click *OK* to save the Application object information.

Creating the Application Object to Apply the Personality

7

To create an Application object to apply the personality to users' workstations, you copy the information from an existing Application object.

- 1 In ConsoleOne®, right-click the container that you want to create the Application object in, click *New*, then click *Object*.
- 2 Click *Application*, then click *OK*.
- 3 Click *An Application By Using an Existing Application Object*.
- 4 Click *Next*, then browse to and select the Application object you want to duplicate (in this example, the CollectDNA object).
- 5 Click *Next*.
- 6 In the *Object Name* field, type a descriptive name for the new object (ApplyDNA, for example), then click *Next*.
- 7 If necessary, define the system requirements that a workstation must meet before the application is distributed to it, then click *Next*.
- 8 Associate the Application object with the users or workstations that you want to distribute the application to, select the *Force Run* check box, then click *Next*.
- 9 Review the settings for the Application object, select the *Display Details After Creation* check box, then click *Finish*.
- 10 Click the *Run Options* tab, then click *Application*.
- 11 In the *Parameters* field, type the following:

```
%DDNA_ACTION% %DDNA_DATA%\%DDNA_USER%\%DDNA_WS% /T  
%DDNA_SOURCE%\Templates\%DDNA_TEMPLATE% /X %DDNA_SILENT%
```

For example, using the sample directories explained above:

```
/A \\server1\vol\ddna\data\%DNA_User%\%DDNA_WS% /T  
\\server1\vol\ddna\templates\mydnatemplate.dtf /X %DDNA_SILENT%
```

The following example applies the DNA file while the user interface is active:

```
/M /A \\server1\vol\ddna\data\%DDNA_User%\%DDNA_WS% /T  
\\server1\vol\ddna\templates\mydnatemplate.dtf /X %DDNA_SILENT%
```

The parameter is the same as the parameter for the CollectDNA Application object except the /D (create the DNA file) switch has been replaced with the /A (apply the DNA file) switch.

The following table contains information about each switch not defined using an application macro:

Switch	Description	Parameters
/T	Uses a template to specify migration settings.	Template file to use for this migration. Use a UNC path to specify the location.

Switch	Description	Parameters
/M	Starts the migration.	(Optional switch.) /M cannot be used with the /Q switch (silent mode). This switch should be used only in conjunction with the /D switch (to create a DNA file) or with the /A switch (to apply a specified DNA file).
/X	Exits Desktop DNA ZENworks Edition when migration is completed (unless an error occurs).	

The following table contains information about each *ApplyDNA* macro in this parameter.

Macro	Value	Description
DDNA_ACTION	/A	Applies a personality to a workstation. Make sure that this value immediately precedes the argument applying the DNA file you want to apply to the workstation.
DDNA_DATA	UNC path to the ddnadata share or directory	Specifies the directory where the personality file will be copied to or retrieved from
DDNA_SILENT	/Q or Empty	/Q: Silently performs the action Empty: Provides a progress dialog box as the action is performed
<hr/> <p>NOTE: This macro must be empty if the /M switch is specified.</p> <hr/>		
DDNA_SOURCE	UNC path to the ddnarun share or directory	Directory where the Desktop DNA executable is located
DDNA_TEMPLATE	Template file	Filename of the template file to use
DDNA_USER	%CN%	Username of the current user
DDNA_WS	%DNA_MACHINE_NAME%	Workstation machine name

12 Click *OK* to save the Application object information.

Upgrading Personality Migration

8

Novell® ZENworks® 7 Personality Migration with SP1 is powered by Unicenter Desktop DNA from Computer Associates. Desktop DNA now includes the Template Editor, which eases the process of creating desktop templates used for migrations. For a more detailed list of enhancements, see the Release Impact Guide (`releaseimpactguide.pdf`) in the `/doc` folder on the *Personality Migration* CD.

If you are upgrading Personality Migration, follow the installation instructions in “[Installing ZENworks Personality Migration](#)” on page 15. A prompt will notify you that the previous version will be uninstalled before proceeding with the new installation.

Documentation Updates

A

This section contains information on documentation content changes that have been made in the *Personality Migration Installation* guide since the initial release of Novell® ZENworks® 7 (August 26, 2005). The information will help you to keep current on updates to the documentation.

All changes that are noted in this section were also made in the documentation. The documentation is provided on the Web in two formats: HTML and PDF. The HTML and PDF documentation are both kept up-to-date with the documentation changes listed in this section.

The documentation update information is grouped according to the date the changes were published. Within a dated section, the changes are alphabetically listed by the names of the main table of contents sections for ZENworks 7 Personality Migration.

If you need to know whether a copy of the PDF documentation you are using is the most recent, the PDF document contains the date it was published on the front title page or in the Legal Notices section immediately following the title page.

The documentation was updated on the following dates:

- ◆ [Section A.1, “March 23, 2007,” on page 43](#)
- ◆ [Section A.2, “July 14, 2006 \(Support Pack 1\),” on page 44](#)
- ◆ [Section A.3, “December 9, 2005,” on page 45](#)

A.1 March 23, 2007

Updates were made to the following sections. The changes are explained below.

- ◆ [Section A.1.1, “Creating the Application Object to Apply the Personality,” on page 43](#)
- ◆ [Section A.1.2, “Creating the Application Object to Collect the Personality,” on page 43](#)

A.1.1 Creating the Application Object to Apply the Personality

The following changes were made in this section:

Location	Change
Step 11 on page 39	Added information to the /M and /A arguments to clarify their usage within Application object macros. Added another example for clarification. Also added a note to the DDNA_SILENT macro description for clarification.

A.1.2 Creating the Application Object to Collect the Personality

The following changes were made in this section:

Location	Change
Step 10 on page 35	Added information to the /M and /D arguments to clarify their usage within Application object macros. Added another example for clarification. Also added a note to the DDNA_SILENT macro description for clarification.

A.2 July 14, 2006 (Support Pack 1)

Updates were made to the following sections. The changes are explained below.

- ♦ Section A.2.1, “Creating the Desktop DNA Template Store,” on page 44
- ♦ Section A.2.2, “Creating the Personality Migration Personality Store,” on page 44
- ♦ Section A.2.3, “Installing ZENworks Personality Migration,” on page 44
- ♦ Section A.2.4, “Creating a DNA Template,” on page 45
- ♦ Section A.2.5, “Configuring the Template,” on page 45
- ♦ Section A.2.6, “Working with Filters,” on page 45
- ♦ Section A.2.7, “Re-enabling the Muscle Migration Function,” on page 45

A.2.1 Creating the Desktop DNA Template Store

The following section was updated:

Location	Change
Section 2.1, “Creating the Desktop DNA Template Store,” on page 11	Information on using Linux added.

A.2.2 Creating the Personality Migration Personality Store

The following section was updated:

Location	Change
Section 2.2, “Creating the Personality Migration Personality Store,” on page 12	Information on using Linux added.

A.2.3 Installing ZENworks Personality Migration

The following chapter was updated:

Location	Change
Chapter 4, "Installing ZENworks Personality Migration," on page 15	New installation steps and screens added.

A.2.4 Creating a DNA Template

The following section was updated:

Location	Change
Section 5.1, "Creating a DNA Template," on page 21	Updated to include more detail.

A.2.5 Configuring the Template

The following section was updated:

Location	Change
Section 5.2, "Configuring the Template," on page 22	New section added.

A.2.6 Working with Filters

The following section was updated:

Location	Change
Section 5.3, "Working with Filters," on page 28	New section added.

A.2.7 Re-enabling the Muscle Migration Function

The following section was updated:

Location	Change
Section 5.4, "Re-enabling the Muscle Migration Function," on page 32	Procedure using the DNA Options Editor added.

A.3 December 9, 2005

The page design in the guide was reformatted to comply with revised Novell documentation standards.