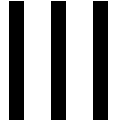


Device Registration



The following sections provide information about Novell[®] ZENworks[®] Linux Management - Dell Edition device registration:

- ◆ [Chapter 9, “Registration Overview,” on page 77](#)
- ◆ [Chapter 10, “Registering Devices,” on page 79](#)
- ◆ [Chapter 11, “Managing Registration Keys and Rules,” on page 81](#)
- ◆ [Chapter 12, “Unregistering and Reregistering Devices,” on page 95](#)

Registration Overview

9

Novell® ZENworks® Linux Management - Dell Edition provides simplified, hands-off management of devices (servers and workstations). Before you can configure application settings through the use of policies, install packages using bundles or catalogs, use preboot services to image devices, collect hardware and software inventory, remotely manage devices, and report on events, you need to install the ZENworks Linux Management Agent on devices and register them against a ZENworks Server.

The ZENworks Management Zone is the top level of the ZENworks management hierarchy. The Management Zone provides an autonomous administrative unit of ZENworks Servers and managed devices (workstations and servers). You use the ZENworks Control Center (the Web-based administrative tool) to manage devices. The ZENworks Servers and managed devices work together to apply the management tasks.

Any device that you want to manage must be registered in the Management Zone. Registering the device adds the device to the ZENworks Object Store and allows you to manage it through the ZENworks Control Center.

For Novell ZENworks to manage a device, you must install the ZENworks Agent software on the device. During installation of the ZENworks Agent software, the device is automatically registered as long as you (or whoever is installing the software) supplies the DNS name or IP address of a ZENworks Server in your Management Zone. You can also register devices at a later time. For more information, see [Chapter 10, “Registering Devices,” on page 79](#).

You can also create registration keys or registration rules to register devices in the Management Zone.

Using registration keys lets you define the keys that are used to register devices in the Management Zone. A registration key specifies a set of assignments that are applied to devices that register using that key. The key must be applied during installation of the ZENworks Agent on a device, either manually or by using a script. For more information, see [Section 11.1, “Managing Registration Keys,” on page 82](#)

If you do not want to use registration keys, you can create registration rules to determine a device's assignments when it registers without using a key. The major difference between using the default registration rules versus using a registration key is that the default registration rules use a filter to determine which set of device assignments to apply, but a key corresponds directly to a specific set of assignments to apply. For more information, see [Section 11.2, “Managing Registration Rules,” on page 87](#).

NOTE: You can register devices against only one ZENworks 7 Linux Management Server. However, you can register devices against one ZENworks 7 Server and multiple ZENworks 6.6.x Linux Management Servers. Registering devices against multiple Servers is useful, for example, during the transitional period while you deploy ZENworks 7.

Registering Devices

10

The process of registering devices includes installing the ZENworks[®] Agent on devices and then registering the devices against a ZENworks Server. During installation of the ZENworks Agent software, the device is automatically registered as long as you (or whoever is installing the software) supplies the IP address or DNS name of a ZENworks Server in your Management Zone. You can also register devices at a later time.

NOTE: If you plan to update Dell PowerEdge servers using Dell Update Packages, we recommend that you mirror the packages from the Dell FTP site before installing the ZENworks Agent on the managed PowerEdge servers. You can also mirror the packages after installing the ZENworks Agent on the managed PowerEdge servers but before registering them in the ZENworks Management Zone. Mirroring the Dell Update Packages prior to installing the ZENworks Agent or registering the servers in the Management Zone ensures that all Dell model numbers are loaded into the database, the standard reports are run as the servers register, and the Dell Update Packages exist in the ZENworks package repository. For more information, see “[Using Dell Update Package Bundles](#)” in the *Novell ZENworks 7 Linux Management - Dell Edition Administration Guide*.

The following sections contain additional information:

- ♦ [Section 10.1, “Installing the ZENworks Agent and Registering Devices,”](#) on page 79
- ♦ [Section 10.2, “Registering a Device after Installing the ZENworks Agent,”](#) on page 79

10.1 Installing the ZENworks Agent and Registering Devices

You can register devices (servers or workstations) against a ZENworks Server during installation of the ZENworks Agent on devices.

For more information about manually installing and registering the agent or automating installation and registration using a script, see “[Setting Up Managed Devices](#)” in the *Novell ZENworks 7 Linux Management - Dell Edition Installation Guide*.

10.2 Registering a Device after Installing the ZENworks Agent

If the person who installed the ZENworks Agent on a device did not specify the Server address (IP address or DNS name) during installation, the device can be registered at a later time by running the following `rug` command from the device:

```
/opt/novell/zenworks/bin/rug sa https://ZEN_Server_address
```

Replace `ZEN_Server_address` with the IP address or DNS name of the primary or secondary server.

Managing Registration Keys and Rules

11

You can manually add devices to folders and groups, but this can be a burdensome task if you have a large number of devices or are consistently registering new devices. The best way to manage a large number of devices is to have them automatically added to the correct folders and groups when they register. To accomplish this, you can use registration keys, registration rules, or both.

Both registration keys and registration rules let you assign a name, folder, and group memberships to a device. However, there are differences between keys and rules that you should be aware of before choosing whether you want to use one or both methods for registration.

- ♦ **Registration Keys:** A registration key is an alphanumeric string that you manually define or randomly generate. During installation of the ZENworks® Agent on a device, the registration key must be input manually or through a response file. When the device connects to a ZENworks Server for the first time, the device is given a name according to the defined naming scheme and then added to the folder and groups defined within the key.

You can create one or more registration keys to ensure that servers and workstations are placed in the desired folders and groups. For example, you might want to ensure that all of the Sales department's devices are added to the `/Workstations/Sales` folder but are divided into three different groups (`SalesTeam1`, `SalesTeam2`, and `SalesTeam3`) depending on their team assignments. You could create three different registration keys and configure each one to add the Sales workstations to the `/Workstations/Sales` folder and the appropriate team group. As long as each device uses the correct registration key, the device is added to the appropriate folder and group.

- ♦ **Registration Rules:** If you don't want to enter a registration key during installation, or if you want devices to be automatically added to different folders and groups based on predefined criteria (for example, operating system type, CPU, or IP address), you can use registration rules.

ZENworks includes a default registration rule for servers and another one for workstations. If a device registers without a key, the default registration rules are applied to determine the folder and group assignments. The two default rules cause all servers to be added to the `/Servers` folder and all workstations to the `/Workstations` folder. The device hostname is used for its name. You cannot delete these two default rules, but you can modify the naming scheme and the folder and groups to which the servers and workstations are added.

The two default rules are designed to ensure that no server or workstation registration fails. You can define additional rules that enable you to filter devices as they register and add them to different folders and groups. If, as recommended in [Section 1.1.3, "Folders vs. Groups," on page 23](#), you've established folders for devices with similar configuration settings and groups for devices with similar assignments, newly registered devices automatically receive the appropriate configuration settings and assignments.

The following sections contain additional information:

- ♦ [Section 11.1, "Managing Registration Keys," on page 82](#)
- ♦ [Section 11.2, "Managing Registration Rules," on page 87](#)

- ◆ [Section 11.3, “Creating Folders,” on page 92](#)

11.1 Managing Registration Keys

You can define the keys that are used to register devices in the Management Zone. A registration key specifies a set of assignments that are applied to devices that register using that key. The key must be applied during installation of the ZENworks Agent on a device, either manually or by using a script.

If you do not want to use registration keys, you can create registration rules to determine a device's assignments when it registers without using a key. The major difference between using the default registration rules versus using a registration key is that the default registration rules use a filter to determine which set of device assignments to apply, but a key corresponds directly to a specific set of assignments to apply. For more information, see [Section 11.2, “Managing Registration Rules,” on page 87](#).

The following sections contain additional information:

- ◆ [Section 11.1.1, “Creating Keys to Register Devices,” on page 82](#)
- ◆ [Section 11.1.2, “Editing Existing Registration Keys,” on page 85](#)
- ◆ [Section 11.1.3, “Renaming, Copying, or Moving Registration Keys,” on page 86](#)
- ◆ [Section 11.1.4, “Deleting Registration Keys,” on page 86](#)

11.1.1 Creating Keys to Register Devices

- 1 In the ZENworks Control Center, click the *Configuration* tab.

2 In the Registration Keys section, click *New*, then click *Registration* to launch the Create New Registration Key Wizard.

Create New Registration Key ?

Step 1: Basic Information

Supply the name, description, and the limit for the new registration key. A unique name can be generated by clicking on the "Generate unique key name" icon.

Name (used as the registration key code):

Generate

Folder: *

/Keys

Description:

Number of times this key can be used:

Unlimited

Limit to:

<< Back Next >> Cancel

3 Fill in the fields:

Name (used as the registration key code): Provide a name for the registration key. When devices register during installation or later using the `rug sa` command, this is the name the device provides to be assigned this registration. Any device that presents this name is given the assignments associated with this registration.

Choose something simple for reduced security, or click *Generate* to create a complex registration string that is difficult to guess. Use the *Generate* option along with a registration key limit for increased security.

The following characters cannot be used when creating a registration: # * (+ \ ; ' " < > / ,

Folder: Specify the folder for this registration key. This is for organizational purposes only. Devices do not need to know where a registration key is located in order to use it, they simply need to know the key name.

Description: Provide a description for the key. This description displays in the ZENworks Control Center, which is the administrative tool for ZENworks Linux Management.

Number of times this key can be used: Choose whether to allow the key to be used an unlimited number of times or specify a number of times that the key can be used.

For security purposes, this option lets you limit the number of devices that can register using this key.

- 4 Click *Next* to display the Naming and Containment Rules page.

Create New Registration Key sdf2 ?

Step 2: Naming and Containment Rules

Supply the template used to create the machine name, and the folder the machine should be placed in when imported.

Name given to imported machines:

Folder where imported machines should be placed:

<< Back Next >> Cancel

- 5 Fill in the fields to specify a naming scheme and the folder where the devices will be added:

Name given to imported machines: Provide a naming scheme for registering devices. To create a naming scheme, select one or more of the following machine variables:

CPU
DNS
GUID
Hostname (default)
OS

Avoid spaces in your naming scheme; these spaces must be escaped when using the command line utilities. For example, use `${HostName}-${OS}` rather than `${HostName} ${OS}`.

Folder where imported machines should be placed: Specify the folder where devices should be placed.

As a general rule, devices with similar configuration settings (refresh intervals, logging settings, remote management settings, and so forth) should be grouped in the same folder so that you can specify the configuration settings on the folder and have the devices in the folder inherit them. You should not use the same folder for devices that require different configuration settings; doing so would prohibit you from using the folder to define the settings and force you to define them on each individual device.

- 6 Click *Next* to display the Group Membership page.

Create New Registration Key sdf2 ?

Step 3: Group Membership

Supply the groups new machines should be placed in when imported.
Note: only groups that are valid for the folder selected in the previous step will be selectable.

Add Remove	
<input type="checkbox"/> Name	In Folder
No items selected, click add to select items	

<< Back Next >> Cancel

Adding groups causes registering devices to receive any assignments provided by membership in the groups. Assignments from group membership are additive, so if a device is assigned to both group A and group B, the device receives all assignments from both groups.

Click *Add* to add a group. You can only add groups that are valid for the type of device folder you specified on the previous page of the wizard. For example, if you specified the / Devices/Workstations folder, you can only choose workstation groups.

- 7 Click *Next* to display the Summary page.
- 8 Review the information on the Summary page, making any changes to the settings by using the *Back* button as necessary. Click *Finish* to create the registration key according to the settings on the Summary page.

11.1.2 Editing Existing Registration Keys

- 1 In the ZENworks Control Center, click the *Configuration* tab.
- 2 Click the underlined link for the registration key that you want to edit.

NOTE: If you edit an existing registration key, be aware that the changes you make apply only to newly registered devices. If the device is already registered, the original settings remain. For example, if you change the naming and folder containment settings, those devices already registered retain the previous naming convention and remain in the original folder they were placed in. You could, however, unregister the devices and then reregister them to ensure that the new naming convention and folder containment settings are applied to the previously registered devices. For more information, see [Chapter 12, “Unregistering and Reregistering Devices,” on page 95](#).

- 2a** (Optional) In the *General* section, make the desired changes:

Description: Edit the description for the key. This description displays in the ZENworks Control Center, which is the administrative tool for ZENworks Linux Management.

Number of times this key can be used: Choose whether to allow the key to be used an unlimited number of times or specify a number of times that the key can be used.

For security purposes, this option lets you limit the number of devices that can register using this key.

2b (Optional) In the *Values Applied to Imported Machines* section, make the desired changes:

Name given to imported machines: Select one or more machine variables to provide a naming scheme for registering devices.

Avoid spaces in your naming scheme, because these spaces must be escaped when using the command line utilities. For example, use `${HostName}-${OS}` rather than `${HostName} ${OS}`.

Folder where imported machines should be placed: Specify the folder where devices should be placed.

As a general rule, devices with similar configuration settings (refresh intervals, logging settings, remote management settings, and so forth) should be grouped in the same folder so that you can specify the configuration settings on the folder and have the devices in the folder inherit them. You should not use the same folder for devices that require different configuration settings; doing so would prohibit you from using the folder to define the settings and force you to define them on each individual device.

Group membership: Click *Add* to add a group. You can only add groups that are valid for the type of device folder you specified on the previous page of the wizard. For example, if you specified the `/Devices/Workstations` folder, you can only choose workstation groups. To remove a group, select the box next to the group's name, then click *Remove*.

NOTE: If you change group membership for a device and then reregister it, the previous group membership is left intact and the new group membership is added. For example, deviceA is a member of group1. You then edit the key to change membership to group2. When the device is reregistered, the device is a member of both groups.

3 Click *Apply*.

11.1.3 Renaming, Copying, or Moving Registration Keys

1 In the ZENworks Control Center, click the *Configuration* tab.

2 In the Registration Keys section, click *Advanced*.

3 Select a registration key by selecting the box next to its name, click *Edit*, then click an option:

- ♦ **Rename:** Click *Rename*, type a new name for the registration key, then click *OK*.
- ♦ **Copy:** Click *Copy*, type a new name for the registration key, then click *OK*.

The copy option is useful to create a new registration key that is similar to an existing key. You can copy a key and then edit the new key's settings.

- ♦ **Move:** Click *Move*, choose a destination folder for the selected objects, then click *OK*.

The folder for registration keys is for organizational purposes only. Devices do not need to know where a registration key is located in order to use it, they simply need to know the key name.

Some actions cannot be performed on multiple objects. For example, if more than one check box is selected, the *Rename* and *Copy* options are not available from the *Edit* menu.

11.1.4 Deleting Registration Keys

1 In the ZENworks Control Center, click the *Configuration* tab.

2 Select the key by clicking the check box next to the key, then click *Delete*.

11.2 Managing Registration Rules

Registration rules let you determine a device's assignments when it registers without using a key. The major difference between using the default registration rules versus using a registration key is that the default registration rules use a filter to determine which set of device assignments to apply, but a key corresponds directly to a specific set of assignments to apply.

By default, the list includes a default registration rule for servers and another one for workstations. These two rules cause all servers to be added to the `/Servers` folder and all workstations to the `/Workstations` folder. The device hostname is used for its name. You cannot delete these two default rules, but you can modify the naming scheme and the groups to which the servers and workstation are added.

The two server and workstation default rules are designed to ensure that no server or workstation registration fails. You can, however, define additional rules that enable you to filter devices as they register and add them to different folders and groups. If you establish folders for devices with similar configuration settings and groups for devices with similar bundle and policy assignments, newly registered devices automatically receive the configuration settings and assignments appropriate to them.

If you do not want to use registration rules, you can create registration keys. Using registration keys lets you define the keys that are used to register devices in the Management Zone. For more information, see [Section 11.1, “Managing Registration Keys,” on page 82](#).

The following sections contain additional information:

- ◆ [Section 11.2.1, “Creating Rules to Register Devices,” on page 87](#)
- ◆ [Section 11.2.2, “Editing Existing Registration Rules,” on page 90](#)
- ◆ [Section 11.2.3, “Renaming or Copying Registration Rules,” on page 92](#)
- ◆ [Section 11.2.4, “Reordering Registration Rules,” on page 92](#)
- ◆ [Section 11.2.5, “Deleting Registration Rules,” on page 92](#)

11.2.1 Creating Rules to Register Devices

- 1 In the ZENworks Control Center, click the *Configuration* tab.

- 2 In the Default Registration Rules section, click *New* to launch the Create New Default Rule Wizard.

Create New Default Rule ?

Step 1: Basic Information

Supply the name and description for the new Default Rule.

Name:

Description:

<< Back Next >> Cancel

- 3 Fill in the fields:

Name: Provide a name for the registration rule.

For more information, see [Appendix B, “Naming Conventions in the ZENworks Control Center,”](#) on page 475.

Description: Provide a description if desired. The description is displayed on the rule’s Details page. If you are creating several registration rules, you might want to use the description to detail each rule.

- 4 Click *Next* to display the Import Filters page.

Create New Default Rule ?

Step 2: Import Filters

Specify the criteria used for determining which machines should use this Default Registration Rule.

Add Filter Delete

Import machines matching the following criteria:

<< Back Next >> Cancel

- 5 Click *Add Filter* to specify the criteria used to determine which devices should use this Default Registration Rule.

5a Select an option from the drop-down list in the left field, select *Equal to*, *Contains*, *Starts with*, or *Ends with* from the drop-down list in the center field, then type a value in the right field.

The options you can use are listed below, along with possible values. The format for all values, with the exception of Device Type, is free form string.

Criteria	Possible Value
CPU	Intel Pentium M processor 1600MHz
DNS	abc.xyz.com
Device Type	Server or Workstation
GUID	5bf63fb9b1ed4cd880e1a428a1fcf737
Hostname	zenserver
IPAddress	123.456.78.99
OS	The format for this value is not free form; the values for the supported OS platforms are: suse-93-i586 suse-93-x86_64 sles-9-i586 sles-9-x86_64 rhel-3as-i386 rhel-3es-i386 rhel-3ws-i386 rhel-4as-i386 rhel-4es-i386 rhel-4ws-i38

5b (Conditional) Click *Add Filter* again to add an additional row of criteria and repeat **Step 5a** and **Step 5b**, as many times as necessary.

Be aware that the rows in the filter are separated by And. If you specify multiple rows in the filter, the criteria in all rows must be met for the rule to apply.

6 Click *Next* to display the Naming and Containment Rules page.

Create New Default Rule ?

Step 3: Naming and Containment Rules

Supply the template used to create the machine name, and the folder the machine should be placed in when imported.

Name given to imported machines:

Folder where imported machines should be placed:

<< Back Next >> Cancel

7 Fill in the fields:

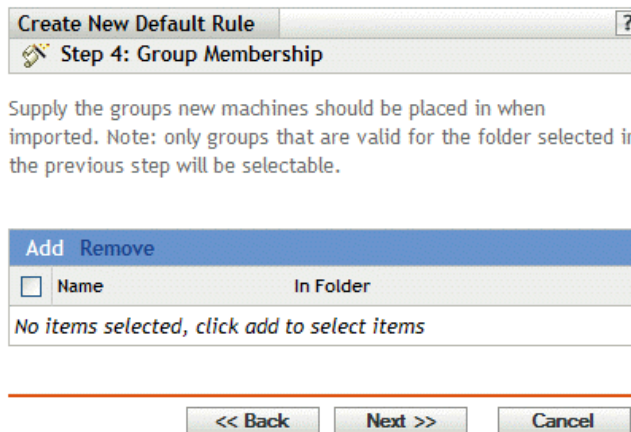
Name given to imported machines: Provide a naming scheme for registering devices.

Avoid spaces in your naming scheme; these spaces must be escaped when using the command line utilities. For example, use `${HostName}-${OS}` rather than `${HostName} ${OS}`.

Folder where imported machines should be placed: Specify the folder where devices should be placed.

As a general rule, devices with similar configuration settings (refresh intervals, logging settings, remote management settings, and so forth) should be grouped in the same folder so that you can specify the configuration settings on the folder and have the devices in the folder inherit them. You should not use the same folder for devices that require different configuration settings; doing so would prohibit you from using the folder to define the settings and force you to define them on each individual device.

- 8 Click *Next* to display the Group Membership page.



Adding groups causes devices to receive any assignments provided by membership in the groups. Assignments from group membership are additive, so if a device is assigned to both group A and group B, the device receives all assignments from both groups.

Click *Add* to add a group. You can only add groups that are valid for the type of device folder you specified on the previous page of the wizard. For example, if you specified the `/Devices/Workstations` folder, you can only choose workstation groups.

- 9 Click *Next* to display the Summary page.
- 10 Review the information on the Summary page, making any changes to the settings by using the *Back* button as necessary. Click *Finish* to create the registration rule according to the settings on the Summary page.

11.2.2 Editing Existing Registration Rules

- 1 In the ZENworks Control Center, click the *Configuration* tab.
- 2 Click the underlined link for the registration rule that you want to edit.

NOTE: If you edit an existing registration rule, be aware that the changes you make apply only to newly registered devices. If the device is already registered, the original settings remain. For example, if you change the naming and folder containment settings, those devices already registered retain the previous naming convention and remain in the original folder they were placed in. You could, however, unregister the devices and then reregister them to ensure that

the new naming convention and folder containment settings are applied to the previously registered devices. For more information, see [Chapter 12, “Unregistering and Reregistering Devices,” on page 95](#).

3 (Optional) In the *General* section, make the desired changes:

Description: Edit the description for the rule. This description displays in the ZENworks Control Center, which is the administrative tool for ZENworks Linux Management.

4 (Optional) In the *Import Filters* section, make the desired changes.

4a Select an option from the drop-down list in the left field, select *Equal to*, *Contains*, *Starts with*, or *Ends with* from the drop-down list in the center field, then type a value in the right field.

The criteria options you can use are listed below, along with possible values. The format for all values, with the exception of Device Type, is free form string.

Criteria	Possible Value
CPU	Intel Pentium M processor 1600MHz
DNS	abc.xyz.com
Device Type	Server or Workstation
GUID	5bf63fb9b1ed4cd880e1a428a1fcf737
Hostname	zenserver
IPAddress	123.456.78.99
OS	The format for this value is not free form; the values for the supported OS platforms are: suse-93-i586 suse-93-x86_64 sles-9-i586 sles-9-x86_64 rhel-3as-i386 rhel-3es-i386 rhel-3ws-i386 rhel-4as-i386 rhel-4es-i386 rhel-4ws-i38

4b (Optional) Click *Add Filter* again to add an additional row of criteria and repeat [Step 4a](#) and [Step 4b](#), as many times as necessary.

Be aware that the rows in the filter are separated by And. If you specify multiple rows in the filter, the criteria in all rows must be met for the rule to apply.

5 (Optional) In the *Values Applied to Imported Machines* section, make the desired changes:

Name given to imported machines: Select one or more machine variables to provide a naming scheme for registering devices.

Avoid spaces in your naming scheme; these spaces must be escaped when using the command line utilities. For example, use `${HostName}-${OS}` rather than `${HostName} ${OS}`.

Folder where imported machines should be placed: Specify the folder where devices should be placed.

As a general rule, devices with similar configuration settings (refresh intervals, logging settings, remote management settings, and so forth) should be grouped in the same folder so that you can specify the configuration settings on the folder and have the devices in the folder inherit them. You should not use the same folder for devices that require different configuration settings; doing so would prohibit you from using the folder to define the settings and force you to define them on each individual device.

Group membership: Click *Add* to add a group. You can only add groups that are valid for the type of device folder you specified on the previous page of the wizard. For example, if you specified the `/Devices/Workstations` folder, you can only choose workstation groups. To remove a group, select the box next to the group's name, then click *Remove*.

6 Click *Apply*.

11.2.3 Renaming or Copying Registration Rules

- 1 In the ZENworks Control Center, click the *Configuration* tab.
- 2 In the *Default Registration Rules* section, click *Advanced*.
- 3 Select a registration rule by selecting the box next to its name, click *Edit*, then click an option:
 - ♦ **Rename:** Click *Rename*, type a new name for the registration rule, then click *OK*.
 - ♦ **Copy:** Click *Copy*, type a new name for the registration rule, then click *OK*.

The copy option is useful to create a new registration rule that is similar to an existing rule. You can copy a key and then edit the new rule's settings.

If more than one check box is selected, the *Rename* and *Copy* options are not available from the *Edit* menu.

11.2.4 Reordering Registration Rules

Rules are applied from the top down, and only the first matching rule is applied to a registering device. You should order the more restrictive rules first, then the more general rules, followed by the two default server and workstation rules (which always remain the last two rules).

To move a rule up or down in the list:

- 1 Select the rule by selecting the check box next to the rule.
- 2 Click *Move Up* or *Move Down*.

11.2.5 Deleting Registration Rules

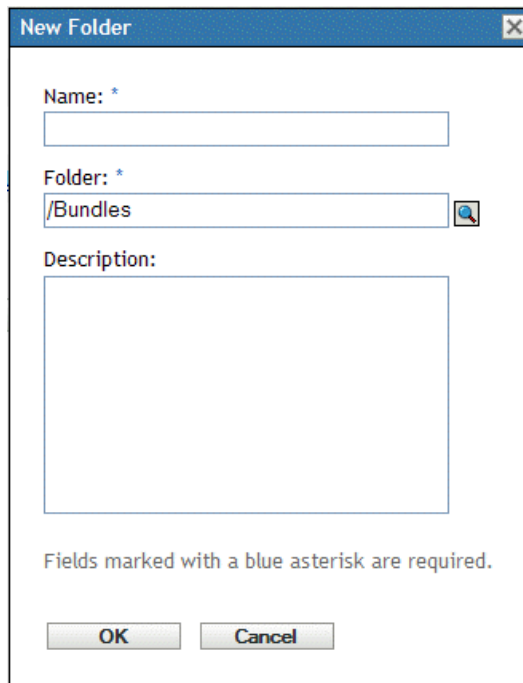
- 1 In the ZENworks Control Center, click the *Configuration* tab.
- 2 Select the registration rule by selecting the check box next to the rule, then click *Delete*.

11.3 Creating Folders

A folder is an organization object that displays in the ZENworks Control Center interface, which is the administrative tool for ZENworks Linux Management. A folder can contain various objects, including subfolders, registration keys, registration rules, and more.

To create a folder:

- 1 In the ZENworks Control Center, click the *Configuration* tab.
- 2 Click *New*, then click *Folder* to display the New Folder dialog box.



The screenshot shows a 'New Folder' dialog box. It has a title bar with the text 'New Folder' and a close button. The dialog contains three input fields: 'Name: *' with an empty text box, 'Folder: *' with a text box containing '/Bundles' and a browse button, and 'Description:' with a large empty text area. Below the fields is a note: 'Fields marked with a blue asterisk are required.' At the bottom are 'OK' and 'Cancel' buttons.

- 3 Fill in the fields:
 - ♦ **Name:** Provide a unique name for your folder. This is a required field.
For more information, see [Appendix B, “Naming Conventions in the ZENworks Control Center,”](#) on page 475.
 - ♦ **Folder:** Type the name or browse to the folder that contains this folder in the ZENworks Control Center interface.
 - ♦ **Description:** Provide a short description of the folder's contents.
- 4 Click *OK*.

Unregistering and Reregistering Devices

12

Under certain circumstances, it might be necessary to unregister devices from or reregister devices against the ZENworks® Server.

The following sections contain additional information:

- ♦ [Section 12.1, “Possible Scenarios for Unregistering and Reregistering Devices,” on page 95](#)
- ♦ [Section 12.2, “Unregistering Devices,” on page 96](#)
- ♦ [Section 12.3, “Reregistering Devices,” on page 96](#)

12.1 Possible Scenarios for Unregistering and Reregistering Devices

The following list illustrates possible scenarios in which you might want to unregister and reregister devices:

- ♦ You have secondary ZENworks Servers set up by job function (engineering, marketing, and so forth), an employee transfers to another job function, and you want to change the ZENworks Server that the device is registered against.
- ♦ You move a device from one physical location to another and you want to change the device's ZENworks Management Zone or the ZENworks Server that the device is registered against.
- ♦ You want to balance server load by changing the ZENworks Server that a device is registered against.

In these three scenarios, you could unregister the device and then reregister it in another ZENworks Management Zone or against another ZENworks Server. It is not necessary to remove the device object from the ZENworks Control Center because the updated Management Zone or ZENworks Server information is updated in the object's properties.

- ♦ You edit a registration key or registration rule to change the naming convention and folder containment settings as explained in [Section 11.1.2, “Editing Existing Registration Keys,” on page 85](#) and [Section 11.2.2, “Editing Existing Registration Rules,” on page 90](#) and you want all managed devices named and placed in folders according to the new settings.

In this scenario, only newly registered devices use the new settings. You can unregister devices, remove them from the ZENworks Control Center (click the *Devices* tab, navigate to and select devices by selecting the check box next to their names, then click *Delete*), and then reregister them to ensure that the devices are renamed and placed in the proper folders according to the edited settings.

- ♦ You no longer want to manage a device using ZENworks Linux Management.

When you unregister a device, the device is no longer registered against a ZENworks Server and the device is no longer managed.

IMPORTANT: If you delete a device object in the ZENworks Control Center but do not unregister the device, when the device is refreshed according to its schedule or if the user runs the `rug refresh` command, the device reregisters and a corresponding device object is re-

created in the ZENworks Control Center. If you no longer want to manage the device using ZENworks Linux Management, ensure that you unregister the device, as explained below.

When you unregister a device, the ZENworks Agent software remains on the device. You can leave the ZENworks Agent on the device in case you want to reregister it, or you can uninstall the ZENworks Agent. For more information, see [Section 6.4, “Uninstalling the ZENworks Agent,” on page 59](#).

12.2 Unregistering Devices

To unregister a device, run the following `rug` command from the device:

```
/opt/novell/zenworks/bin/rug sd
```

12.3 Reregistering Devices

To reregister a device, run the following `rug` command from the device:

```
/opt/novell/zenworks/bin/rug sa https://ZEN_Server_address
```

Replace `ZEN_Server_address` with the IP address or DNS name of the primary or secondary server.