

# Novell ZENworks® Asset Management Migration Utility

10

[www.novell.com](http://www.novell.com)

MIGRATION GUIDE

September 21, 2007



Novell®

## Legal Notices

Novell, Inc., makes no representations or warranties with respect to the contents or use of this documentation, and specifically disclaims any express or implied warranties of merchantability or fitness for any particular purpose. Further, Novell, Inc., reserves the right to revise this publication and to make changes to its content, at any time, without obligation to notify any person or entity of such revisions or changes.

Further, Novell, Inc., makes no representations or warranties with respect to any software, and specifically disclaims any express or implied warranties of merchantability or fitness for any particular purpose. Further, Novell, Inc., reserves the right to make changes to any and all parts of Novell software, at any time, without any obligation to notify any person or entity of such changes.

Any products or technical information provided under this Agreement may be subject to U.S. export controls and the trade laws of other countries. You agree to comply with all export control regulations and to obtain any required licenses or classification to export, re-export or import deliverables. You agree not to export or re-export to entities on the current U.S. export exclusion lists or to any embargoed or terrorist countries as specified in the U.S. export laws. You agree to not use deliverables for prohibited nuclear, missile, or chemical biological weaponry end uses. See the [Novell International Trade Services Web page \(http://www.novell.com/info/exports/\)](http://www.novell.com/info/exports/) for more information on exporting Novell software. Novell assumes no responsibility for your failure to obtain any necessary export approvals.

Copyright © 2007 Novell, Inc. All rights reserved. No part of this publication may be reproduced, photocopied, stored on a retrieval system, or transmitted without the express written consent of the publisher.

Novell, Inc., has intellectual property rights relating to technology embodied in the product that is described in this document. In particular, and without limitation, these intellectual property rights may include one or more of the U.S. patents listed on the [Novell Legal Patents Web page \(http://www.novell.com/company/legal/patents/\)](http://www.novell.com/company/legal/patents/) and one or more additional patents or pending patent applications in the U.S. and in other countries.

Novell, Inc.  
404 Wyman Street, Suite 500  
Waltham, MA 02451  
U.S.A.  
[www.novell.com](http://www.novell.com)

*Online Documentation:* To access the latest online documentation for this and other Novell products, see the [Novell Documentation Web page \(http://www.novell.com/documentation\)](http://www.novell.com/documentation).

## **Novell Trademarks**

For Novell trademarks, see [the Novell Trademark and Service Mark list \(http://www.novell.com/company/legal/trademarks/tmlist.html\)](http://www.novell.com/company/legal/trademarks/tmlist.html).

## **Third-Party Materials**

All third-party trademarks are the property of their respective owners.



# Contents

<b>About This Guide</b>	<b>7</b>
<b>1 Planning Your Migration to ZENworks Configuration Management</b>	<b>9</b>
<b>2 Using the Novell ZENworks Asset Management Migration Utility</b>	<b>11</b>
2.1 Overview	11
2.2 Installing the ZENworks Asset Management Migration Utility	11
2.3 Selecting the Migration Source	12
2.4 Selecting the Migration Destination	13
2.5 Using the Migration Console to Migrate Objects	14
2.5.1 Migrating User-Defined Field Definitions	15
2.5.2 Migrating Local Product Definitions	15
2.5.3 Migrating Inventory Data	16
<b>A Understanding the Migration Console</b>	<b>19</b>
A.1 Select Objects to Migrate Tab	19
A.2 Items to Migrate Tab	20
A.3 Migration Status Tab	21
A.4 Migration History Tab	21
A.5 Migrated Objects Tab	22
A.6 Select ZAM Database Field	22
A.7 Select Zone Field	23
A.8 Start Migration Button	23
A.9 Cancel Button	23



# About This Guide

This *Novell ZENworks 10 Asset Management Migration Guide* includes information to help you successfully migrate select ZENworks® Asset Management data to an installed Novell ZENworks 10 Configuration Management system. The information in this guide is organized as follows:

- ♦ Chapter 1, “Planning Your Migration to ZENworks Configuration Management,” on page 9
- ♦ Chapter 2, “Using the Novell ZENworks Asset Management Migration Utility,” on page 11
- ♦ Appendix A, “Understanding the Migration Console,” on page 19

## Audience

This guide is intended for ZENworks Configuration Management administrators.

## Feedback

We want to hear your comments and suggestions about this manual and the other documentation included with this product. Please use the User Comments feature at the bottom of each page of the online documentation, or go to the [Novell Documentation Feedback site \(http://www.novell.com/documentation/feedback.html\)](http://www.novell.com/documentation/feedback.html) and enter your comments there.

## Additional Documentation

ZENworks Configuration Management is supported by other documentation (in both PDF and HTML formats) that you can use to learn about and implement the product. For additional documentation, see the [ZENworks 10 Configuration Management documentation \(http://www.novell.com/documentation/zcm10/index.html\)](http://www.novell.com/documentation/zcm10/index.html).

## Documentation Conventions

In Novell documentation, a greater-than symbol (>) is used to separate actions within a step and items in a cross-reference path.

A trademark symbol (®, ™, etc.) denotes a Novell trademark. An asterisk (\*) denotes a third-party trademark.

When a single pathname can be written with a backslash for some platforms or a forward slash for other platforms, the pathname is presented with a backslash. Users of platforms that require a forward slash, such as Linux\*, should use forward slashes as required by your software.





# Planning Your Migration to ZENworks Configuration Management

# 1

Novell® ZENworks® Configuration Management provides the ZENworks Asset Management Migration utility that allows you to migrate your user-defined fields, local products, and enterprise inventory data from ZENworks Asset Management to Configuration Management.

The ZENworks Asset Management Migration utility is provided with Configuration Management. You copy and install it to your workstation from an executable file that resides on your Primary Server. The utility consists of a Migration Console where you perform the migration.

The ZENworks Asset Management Migration utility allows you to migrate the following:

- ♦ Administrator-defined fields
- ♦ Local products
- ♦ Enterprise inventory



# Using the Novell ZENworks Asset Management Migration Utility

# 2

The following sections provide instructions on how to use the ZENworks® Asset Management Migration utility to migrate data from ZENworks Asset Management 7.5 to ZENworks Configuration Management:

- ♦ [Section 2.1, “Overview,” on page 11](#)
- ♦ [Section 2.2, “Installing the ZENworks Asset Management Migration Utility,” on page 11](#)
- ♦ [Section 2.3, “Selecting the Migration Source,” on page 12](#)
- ♦ [Section 2.4, “Selecting the Migration Destination,” on page 13](#)
- ♦ [Section 2.5, “Using the Migration Console to Migrate Objects,” on page 14](#)

## 2.1 Overview

The ZENworks Asset Management Migration utility is used to migrate the following data to ZENworks Configuration Management:

- ♦ **User-Defined Field Definitions:** User-defined fields that were defined in ZENworks Asset Management. These field definitions are migrated as a group; they cannot be migrated individually. For more information, see [Section 2.5.1, “Migrating User-Defined Field Definitions,” on page 15](#).
- ♦ **Local Product Definitions:** Local product definitions that were defined in ZENworks Asset Management. You can choose to migrate some or all of these product definitions. For more information, see [Section 2.5.2, “Migrating Local Product Definitions,” on page 15](#).
- ♦ **Inventory:** Inventory data defined by your ZENworks Asset Management collection domains. You can migrate devices individually or as a group. You can also migrate deleted workstations, which are devices that have been deleted in ZENworks Asset Management. For more information, see [Section 2.5.3, “Migrating Inventory Data,” on page 16](#).

Migrating an object is a four-step process:

1. Select the migration source. For more information, see [Section 2.3, “Selecting the Migration Source,” on page 12](#).
2. Select the migration destination. For more information, see [Section 2.4, “Selecting the Migration Destination,” on page 13](#).
3. Select objects to migrate. For more information, see [Section 2.5, “Using the Migration Console to Migrate Objects,” on page 14](#).
4. Initiate the migration. For more information, see [Section 2.5, “Using the Migration Console to Migrate Objects,” on page 14](#).

## 2.2 Installing the ZENworks Asset Management Migration Utility

- 1 In your Web browser, access the following URL:

[http://zenworks\\_primary\\_server\\_id/zenworks-setup/tools/](http://zenworks_primary_server_id/zenworks-setup/tools/)

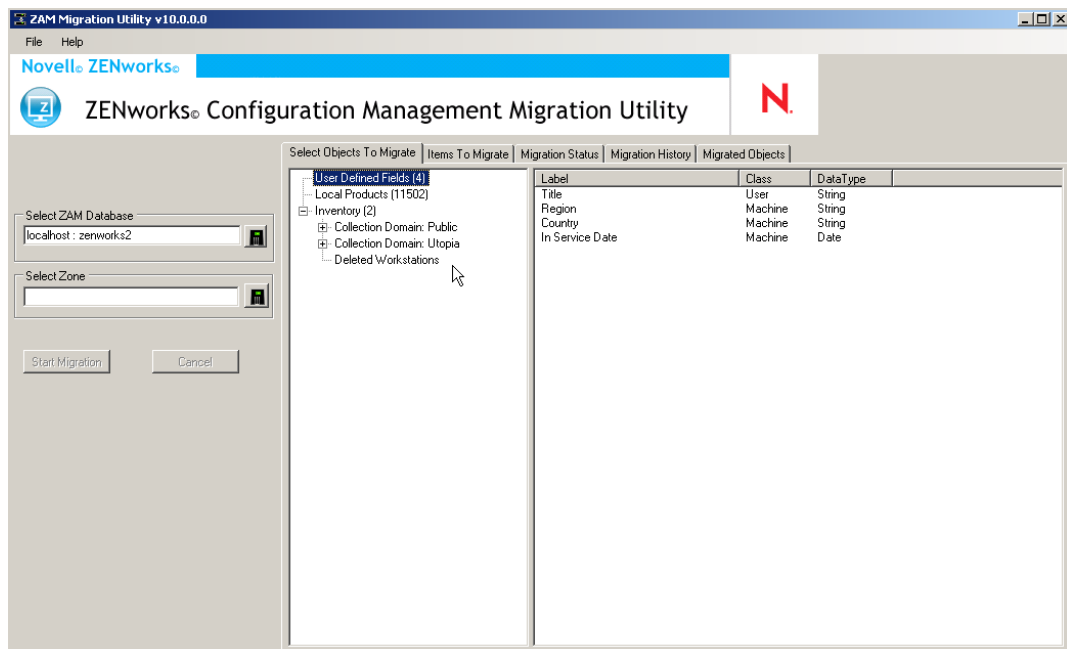
and download `ZAMmigration.exe` to a temporary location.

- 2 Run `ZAMmigration.exe` to install it on your workstation.
- 3 To run the utility on a supported Windows\* device, click *Start > All Programs > ZENworks Configuration Management Migration Utility > ZAM Migration Utility*.

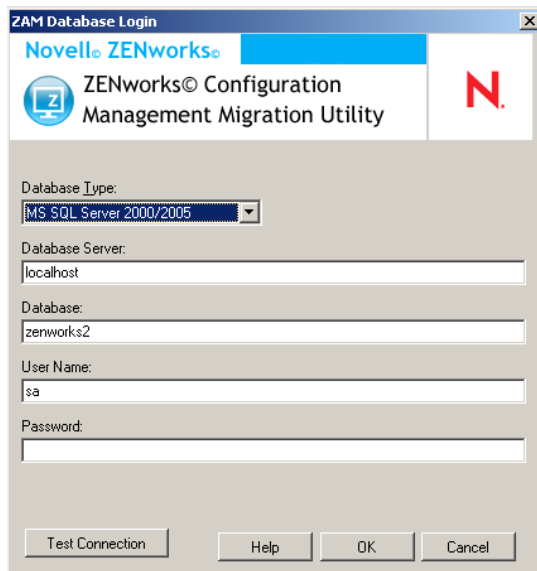
## 2.3 Selecting the Migration Source

The migration source is your ZENworks Asset Management 7.5 database. To log into your database:

- 1 Click *Start > All Programs > ZENworks Configuration Management Migration Utility > ZAM Migration Utility*.



- 2 Click the *Database* icon to the right of the *Select ZAM Database* field.



- 3 Fill in the following fields:

**Database Type:** Specify *MS SQL Server 2000/2005* for both external and embedded MS SQL Server databases.

**Database Server:** Specify either the DNS name or IP address of the database server. Each time you use this dialog box, the last server you logged into is displayed here.

**Database:** Specify the database name. Each time you use this dialog box, the last database you logged into is displayed here.

**User Name:** Specify the username. Each time you use this dialog box, the last username you used is displayed here.

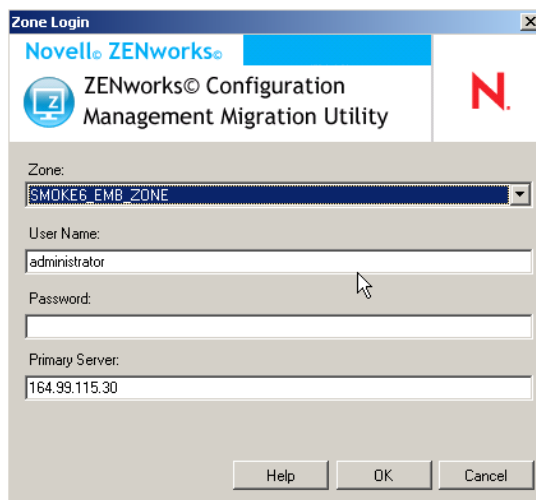
**Password:** Specify the password. This must be specified every time to authenticate.

- 4 Click *OK* to connect, or click *Test Connection* to verify that you can connect to the database.
- 5 Continue with [Section 2.4, “Selecting the Migration Destination,”](#) on page 13.

## 2.4 Selecting the Migration Destination

To log into your migration source Novell® ZENworks Configuration Management Management Zone:

- 1 Click the *Database* icon to the right of the *Select Zone* field.



- 2 Fill in the following fields to authenticate to your destination Management Zone:

**Zone:** Specify your Management Zone. This field is not filled in the first time you access the *Zone Login* dialog box. Thereafter, any zone that you previously logged into by using this dialog box is available from the drop-down list. Each time you use this dialog box, the last zone that you logged into is displayed here.

**User Name:** Specify the username for the zone. “Administrator” is normally used. If this is the first time you logged into this zone using the Migration Console, nothing is displayed; otherwise, the last username you used is displayed. If you select a Management Zone in the *Zone* field, this field is automatically populated with the username you last used for that zone.

**Password:** Specify the password. This must be entered every time to authenticate.

**Primary Server:** For the Primary Server, specify either its DNS name or IP address. This field is automatically populated when you select a Management Zone in the *Zone* field.

- 3 Click *OK*.

The Select Objects To Migrate panel shows the object groups available to migrate along with the number of objects in each group.

- 4 Continue with [Section 2.5, “Using the Migration Console to Migrate Objects,”](#) on page 14.

## 2.5 Using the Migration Console to Migrate Objects

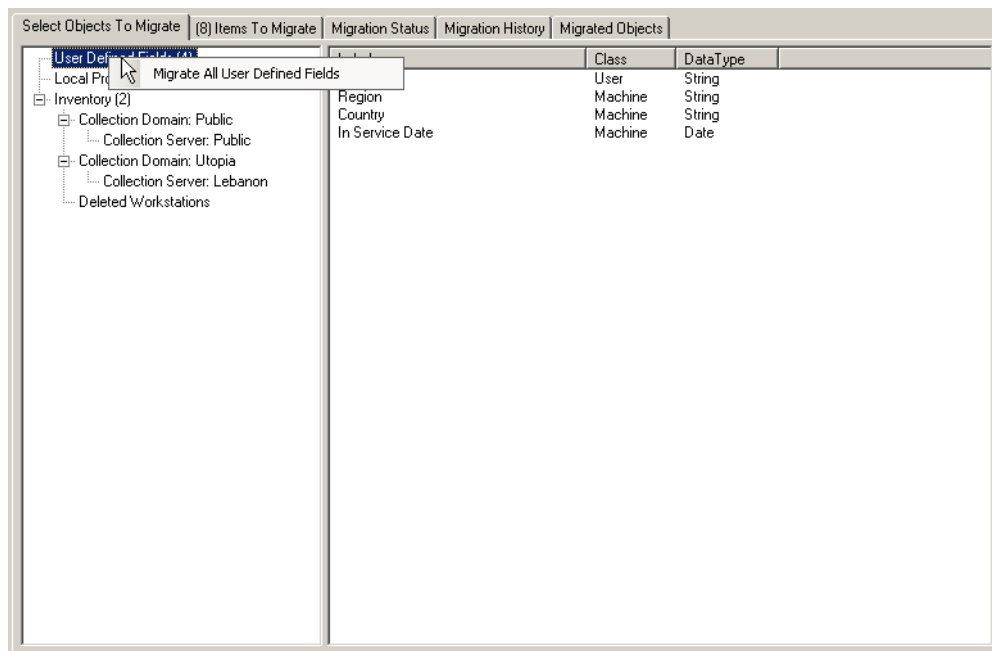
This section shows you how to migrate objects in each data group. Although the steps to migrate different types of objects are presented separately, it isn’t necessary to migrate one type of object at a time. This section includes the following topics:

- ♦ [Section 2.5.1, “Migrating User-Defined Field Definitions,”](#) on page 15
- ♦ [Section 2.5.2, “Migrating Local Product Definitions,”](#) on page 15
- ♦ [Section 2.5.3, “Migrating Inventory Data,”](#) on page 16

## 2.5.1 Migrating User-Defined Field Definitions

- 1 Click *Start > All Programs > ZENworks Configuration Management Migration Utility > ZAM Migration Utility*.
- 2 Log into your ZENworks Asset Management 7.5 database and the Novell ZENworks Configuration Management Management Zone as shown in [Section 2.3, “Selecting the Migration Source,”](#) on page 12 and [Section 2.4, “Selecting the Migration Destination,”](#) on page 13.
- 3 Click the *Select Objects To Migrate* tab.
- 4 Right-click *User Defined Fields* and select *Migrate All User Defined Fields*.

The user-defined fields are displayed in the *Items To Migrate* panel. To remove the user-defined fields from the list, click the *Items to Migrate* tab, right-click *All User Defined Fields*, and select *Remove ‘All User Defined Fields’ from migration queue*. User-defined fields cannot be migrated individually.



- 5 Click *Start Migration*.

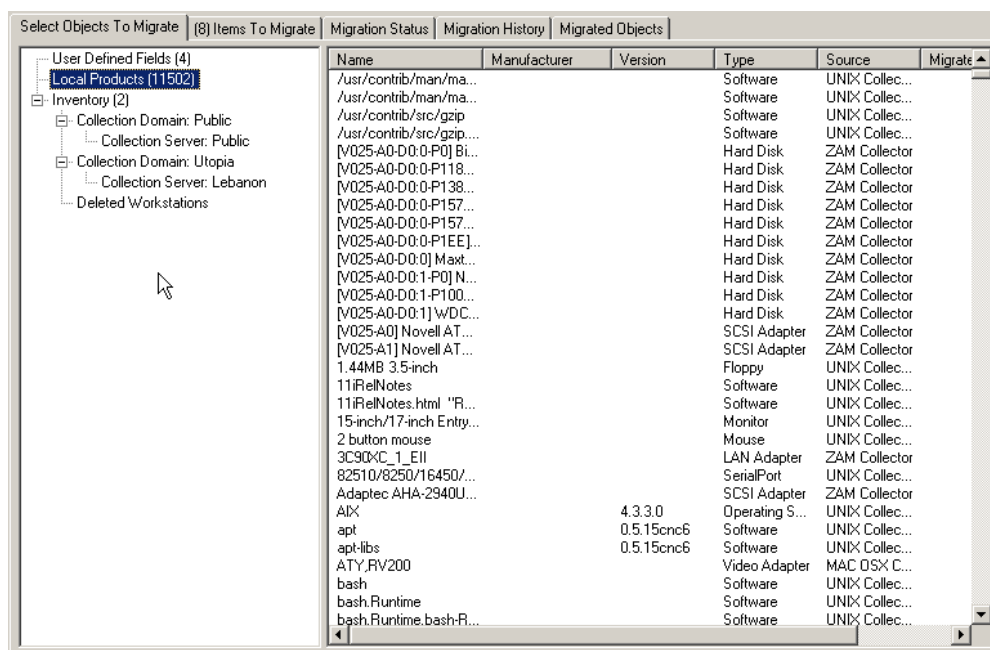
The Migration Status panel opens and displays the migration details. Click *Cancel* to stop the process.

## 2.5.2 Migrating Local Product Definitions

- 1 Click *Start > All Programs > ZENworks Configuration Management Migration Utility > ZAM Migration Utility*.
- 2 Log into your ZENworks Asset Management 7.5 database and the Novell ZENworks Configuration Management Management Zone as shown in [Section 2.3, “Selecting the Migration Source,”](#) on page 12 and [Section 2.4, “Selecting the Migration Destination,”](#) on page 13.
- 3 Click the *Select Objects To Migrate* tab.

#### 4 Click *Local Products*.

A list of the local products is shown on the right side of the panel.



#### 5 Select the local products to migrate.

- ♦ To select all of the local products, right-click *Local Products* and select *Migrate All Local Products*.
- ♦ To select individual local products, right-click a local product listed on the right side of the panel and select *Add Item(s) To Migration Queue*.

You can Shift-click or Ctrl-click to select more than one item.

#### 6 (Optional) To remove local products from the migration list, click *Items to Migrate*, then right-click the local product and select *Remove Item(s) from Migration Queue*.

#### 7 Click *Start Migration*.

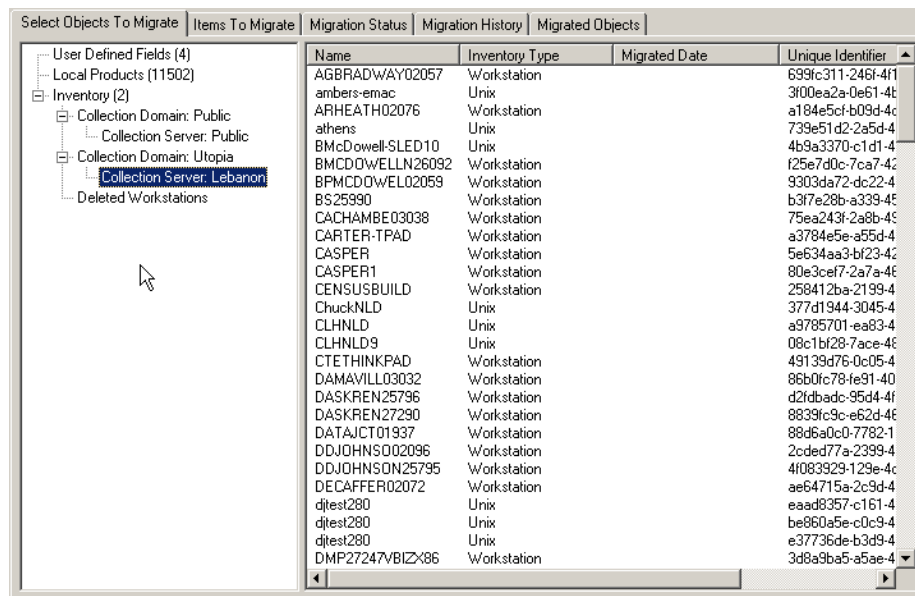
The Migration Status panel opens and displays the migration details.

### 2.5.3 Migrating Inventory Data

- 1 Click *Start > All Programs > ZENworks Configuration Management Migration Utility > ZAM Migration Utility*.
- 2 Log into your ZENworks Asset Management 7.5 database and the Novell ZENworks Configuration Management Management Zone as shown in [Section 2.3, "Selecting the Migration Source,"](#) on page 12 and [Section 2.4, "Selecting the Migration Destination,"](#) on page 13.
- 3 Click the *Select Objects To Migrate* tab.
- 4 Click *Inventory* and select the desired collection domain and collection server, or click *Deleted Workstations*.



A list of workstations is shown on the right.



**5** Select the data to migrate.

- ♦ To select all of the enterprise data, right-click *Enterprise* and select *Migrate All Inventory Data*.
- ♦ To select individual workstations, right-click a workstation listed on the right side of the panel and select *Add Item(s) To Migration Queue*. You can Shift-click or Ctrl-click to select more than one item.

**6** (Optional) To remove workstations from the migration list, click the *Items to Migrate* tab, then right-click the workstation and select *Remove Item(s) from Migration Queue*.

**7** Click *Start Migration*.

The Migration Status panel opens and displays the migration details.

Migrated workstations appear as discovered devices in ZENworks Control Center.



# Understanding the Migration Console

# A

The following sections describe the Migration Console's organization and how to use its functions:

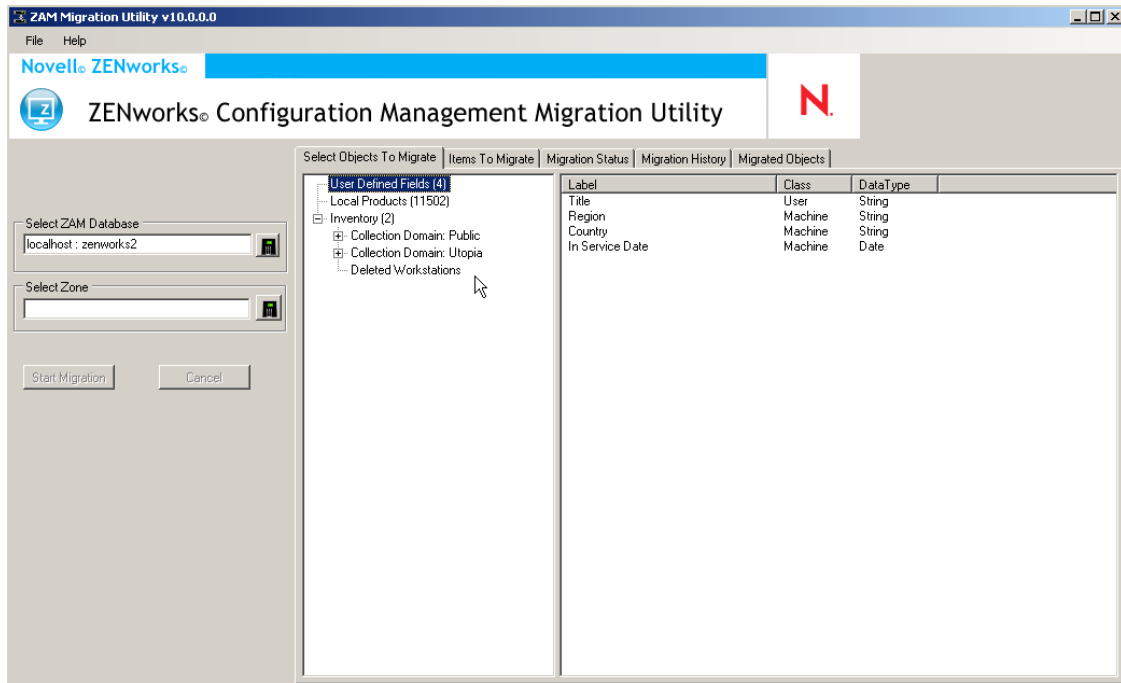
- ♦ [Section A.1, "Select Objects to Migrate Tab," on page 19](#)
- ♦ [Section A.2, "Items to Migrate Tab," on page 20](#)
- ♦ [Section A.3, "Migration Status Tab," on page 21](#)
- ♦ [Section A.4, "Migration History Tab," on page 21](#)
- ♦ [Section A.5, "Migrated Objects Tab," on page 22](#)
- ♦ [Section A.6, "Select ZAM Database Field," on page 22](#)
- ♦ [Section A.7, "Select Zone Field," on page 23](#)
- ♦ [Section A.8, "Start Migration Button," on page 23](#)
- ♦ [Section A.9, "Cancel Button," on page 23](#)

## A.1 Select Objects to Migrate Tab

Click the *Select Objects to Migrate* tab to display the Select Objects to Migrate panel, which shows the three groups of objects you can migrate and indicates how many objects are in each group.

- ♦ **User-Defined Fields:** Custom fields defined in ZENworks Asset Management 7.5. Use these objects to migrate the user-defined field definitions. Only the definitions are migrated, not the field contents. User-defined field contents are migrated when you migrate inventory data.
- ♦ **Local Products:** Software products created and identified to be tracked as part of your inventory. Use these objects to migrate the local product definitions. As with user-defined fields, only the definitions are migrated, not the inventory data.
- ♦ **Inventory:** Inventory data for the enterprise. Use these objects to migrate inventory data.

**Figure A-1** Migration Console



Click any group to display the objects in that group in the panel on the right, along with additional information depending on the group:

- ♦ For user-defined fields, the *Label*, *Class*, and *DataType* are displayed.
- ♦ For local products, the *Name*, *Manufacturer*, *Version*, *Type*, *Source*, and the *Migrated Date* are displayed.
- ♦ For workstations or the entire enterprise, the *Name*, *Inventory Type*, *Migrated Date*, and *Unique Identifier* are displayed.

## A.2 Items to Migrate Tab

The Items to Migrate tab shows the name, object type, and the unique identifier of each selected object. Right-click an object and select *Remove Item(s) from Migration Queue* to remove it from the migration list.

**Figure A-2** *Items to Migrate Tab*

Select Objects To Migrate	(8) Items To Migrate	Migration Status	Migration History	Migrated Objects
Name	Object Type	Unique Identifier		
B525990	Workstation	b3f7e28b-a339-45b1-a94e-3b4d869a7e56		
CACHAMBE03038	Workstation	75ea243f-2a8b-4988-b891-a3e91321bb80		
CARTER-TPAD	Workstation	a3784e5e-a55d-4c10-8f80-8b9eaf356b5e		
CASPER	Workstation	5e634aa3-bf23-4221-9263-05d2d9cd7ed6		
CASPER1	Workstation	80e3cef7-2a7a-466c-8505-d825062d4f1a		
CENSUSBUILD	Workstation	258412ba-2199-4693-b95d-fa5ab7ad8567		
ChuckNLD	Workstation	377d1944-3045-46d6-97ad-ebca5f2c70be		
CLHNLD	Workstation	a9785701-ea83-4195-aa5c-f4d8d73c98ec		

## A.3 Migration Status Tab

When you migrate an object, you are automatically taken to the Migration Status tab, which shows the progress and details of the migration.

**Figure A-3** *Migration Status Tab*

Select Objects To Migrate	Items To Migrate	Migration Status	Migration History	Migrated Objects
7/6/2007 1:35:52 PM: LogicalDrive, 4 Rows have been transformed or copied.				
7/6/2007 1:35:52 PM: Step: MemoryModule				
7/6/2007 1:35:52 PM: MemoryModule, 2 Rows have been transformed or copied.				
7/6/2007 1:35:52 PM: Step: Modem				
7/6/2007 1:35:52 PM: Modem, 0 Rows have been transformed or copied.				
7/6/2007 1:35:52 PM: Step: Monitor				
7/6/2007 1:35:52 PM: Monitor, 2 Rows have been transformed or copied.				
7/6/2007 1:35:52 PM: Step: Mouse				
7/6/2007 1:35:52 PM: Mouse, 2 Rows have been transformed or copied.				
7/6/2007 1:35:52 PM: Step: NetworkDriver				
7/6/2007 1:35:52 PM: NetworkDriver, 19 Rows have been transformed or copied.				
7/6/2007 1:35:52 PM: Step: OperatingSystem				
7/6/2007 1:35:52 PM: OperatingSystem, 1 Rows have been transformed or copied.				
7/6/2007 1:35:52 PM: Step: ParallelPort				
7/6/2007 1:35:52 PM: ParallelPort, 1 Rows have been transformed or copied.				
7/6/2007 1:35:52 PM: Step: Printer				
7/6/2007 1:35:52 PM: Printer, 1 Rows have been transformed or copied.				
7/6/2007 1:35:52 PM: Step: RemovableMedia				
7/6/2007 1:35:52 PM: RemovableMedia, 0 Rows have been transformed or copied.				
7/6/2007 1:35:52 PM: Step: SerialPort				
7/6/2007 1:35:52 PM: SerialPort, 2 Rows have been transformed or copied.				
7/6/2007 1:35:52 PM: Step: Software				
7/6/2007 1:35:52 PM: Software, 90 Rows have been transformed or copied.				
7/6/2007 1:35:53 PM: Step: System				
7/6/2007 1:35:53 PM: System, 1 Rows have been transformed or copied.				
7/6/2007 1:35:53 PM: Step: SystemBoard				
7/6/2007 1:35:53 PM: SystemBoard, 1 Rows have been transformed or copied.				
7/6/2007 1:35:53 PM: Step: VideoAdapter				
7/6/2007 1:35:53 PM: VideoAdapter, 0 Rows have been transformed or copied.				
7/6/2007 1:35:53 PM: Step: ComponentChanges				
7/6/2007 1:35:54 PM: ComponentChanges, 3 Rows have been transformed or copied.				
7/6/2007 1:35:54 PM: Step: WorkstationChanges				
7/6/2007 1:35:54 PM: WorkstationChanges, 12 Rows have been transformed or copied.				
7/6/2007 1:35:54 PM: Step: Save_Migrated_Workstations				
7/6/2007 1:35:54 PM: Creating Device: N27253				
7/6/2007 1:35:55 PM: Finished Migration Queue item: N27253				

## A.4 Migration History Tab

The Migration History panel shows what objects have been migrated, along with the object type, status, and migration date. To see the detailed status of a specific migrated object, right-click the object and select *Detailed Status*. The Migration Status panel opens with details about the migration.

**Figure A-4** Migration History Tab

Select Objects To Migrate	Items To Migrate	Migration Status	Migration History	Migrated Objects
Name	Object Type	Status	Migrated Date	
N27253	Workstation	Success	7/6/2007 1:35:47 PM	
CARTER-TPAD	Workstation	Success	7/6/2007 1:35:26 PM	

## A.5 Migrated Objects Tab

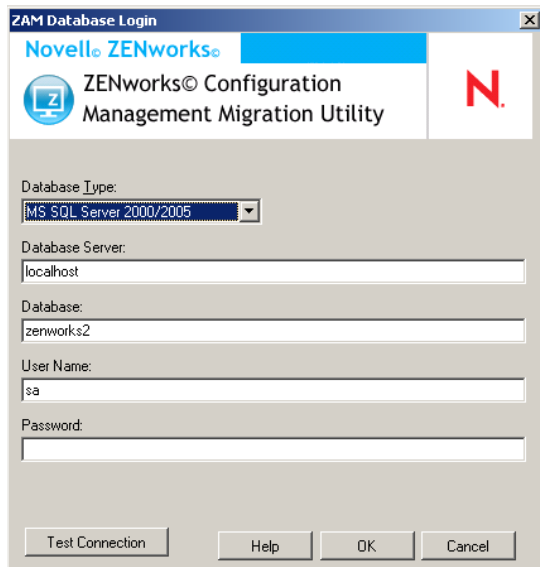
The Migrated Objects tab shows the objects that have been successfully migrated, including the object type, migrated date, and the object's unique identifier.

**Figure A-5** Migrated Objects Tab

Select Objects To Migrate	(7) Items To Migrate	Migration Status	Migration History	Migrated Objects
Name	Object Type	Migrated Date	Unique Identifier	
Network Device	Category	7/6/2007 1:35:32 PM	f1fb60a8-8b0a-4f68-9dc7-0977d1c9cd8e	
Logical Drive	LocalProduct	7/6/2007 1:35:36 PM	fd2758af-e7e0-11d4-aabd-00c04f7479f4	
Memory Module	LocalProduct	7/6/2007 1:35:36 PM	fd2758c1-e7e0-11d4-aabd-00c04f7479f4	
Network Driver	LocalProduct	7/6/2007 1:35:36 PM	fd2758df-e7e0-11d4-aabd-00c04f7479f4	
Pentium M 2000 Syst...	LocalProduct	7/6/2007 1:35:36 PM	9a326a9f-c199-4cf8-a30c-8d4514cc4bdc	
VMware SVGA II	LocalProduct	7/6/2007 1:35:36 PM	265ee3a8-e759-48b9-972b-10b2ef952a6e	
Apple Bonjour 1.0	LocalProduct	7/6/2007 1:35:36 PM	f005ea75-276c-4698-949d-ce7b0565c2d4	
Apple Computer iTun...	LocalProduct	7/6/2007 1:35:36 PM	594fada1-96ca-4bd4-b9fc-43384f76ac7a	
Apple QuickTime 7.0.4	LocalProduct	7/6/2007 1:35:36 PM	fc3d686a-b985-4cf9-889c-29e657628924	
Intel Corporation 440...	LocalProduct	7/6/2007 1:35:36 PM	f1c281a8-5e76-4e10-b64c-1c15b5ae2e16	
Logitech PS/2 Mouse	LocalProduct	7/6/2007 1:35:36 PM	7ee766ad-5ef4-11d7-adbf-0090279c22f5	
Matsushita UJ-822S	LocalProduct	7/6/2007 1:35:36 PM	7d0f5a0b-c10a-4368-a0f8-49e45e5a3f0	
Microsoft Hot Fix KB8...	LocalProduct	7/6/2007 1:35:36 PM	325d377b-ef4f-47fb-9ab8-a9c026fdea4f	
Microsoft Hot Fix KB8...	LocalProduct	7/6/2007 1:35:36 PM	078aa538-383f-4e50-aa21-5d971af1fd0a	
Microsoft Hot Fix KB8...	LocalProduct	7/6/2007 1:35:36 PM	dc3b6caa-706b-455e-880f-b5a39ab2bce4	
Microsoft Hot Fix KB8...	LocalProduct	7/6/2007 1:35:36 PM	53192d31-f250-4af2-8642-b1f9b056015b	
Microsoft Hot Fix KB8...	LocalProduct	7/6/2007 1:35:36 PM	dc5f4650-be16-4c36-80b9-cd4e80d7e333	
Microsoft Hot Fix KB8...	LocalProduct	7/6/2007 1:35:36 PM	fc403725-a191-47b6-8c5b-af0b33f146ba	
Microsoft Hot Fix KB8...	LocalProduct	7/6/2007 1:35:36 PM	2c5eb070-bb0a-4653-bccf-e2926f195c5a	
Microsoft Hot Fix KB8...	LocalProduct	7/6/2007 1:35:36 PM	1713e42a-486f-4404-b94d-4e87e8923f68	
Microsoft Hot Fix KB8...	LocalProduct	7/6/2007 1:35:36 PM	7028df17-cd46-4909-bf51-643b2ddc3007	
Microsoft Hot Fix KB8...	LocalProduct	7/6/2007 1:35:36 PM	c7a7ed55-5f80-4d5c-af86-c4ec071da5d0	
Microsoft Hot Fix KB8...	LocalProduct	7/6/2007 1:35:36 PM	8bfca784-e98c-4fde-8bbd-8b00ce26aacb	
Microsoft Hot Fix KB8...	LocalProduct	7/6/2007 1:35:36 PM	d5f7845b-907b-4b51-9c26-c93c39142b5	
Microsoft Hot Fix KB8...	LocalProduct	7/6/2007 1:35:36 PM	0d85b8f6-b246-471e-9e2d-f9a349675a36	
Microsoft Hot Fix KB8...	LocalProduct	7/6/2007 1:35:36 PM	b32c4741-63e0-482a-822d-f40567df207f	
Microsoft Hot Fix KB8...	LocalProduct	7/6/2007 1:35:36 PM	c3baa86b-2db5-490f-86b6-de84d523b1ac	
Microsoft Hot Fix KB8...	LocalProduct	7/6/2007 1:35:36 PM	ef1d590a-e124-4187-aac1-23b09a852fa3	
Microsoft Hot Fix KB8...	LocalProduct	7/6/2007 1:35:36 PM	d5aee653-0edf-4ad0-9c48-e24035a2dd92	
Microsoft Hot Fix KB8...	LocalProduct	7/6/2007 1:35:36 PM	a9dbb0d3-c4c3-40e5-8eaf-a2c403b79185c2	
Microsoft Hot Fix KB8...	LocalProduct	7/6/2007 1:35:36 PM	ec7514a9-b8eb-489b-a031-7110b8e9eac8	
Microsoft Hot Fix KB8...	LocalProduct	7/6/2007 1:35:36 PM	75a72e4c-fb2d-413e-a7a0-045876df2878	

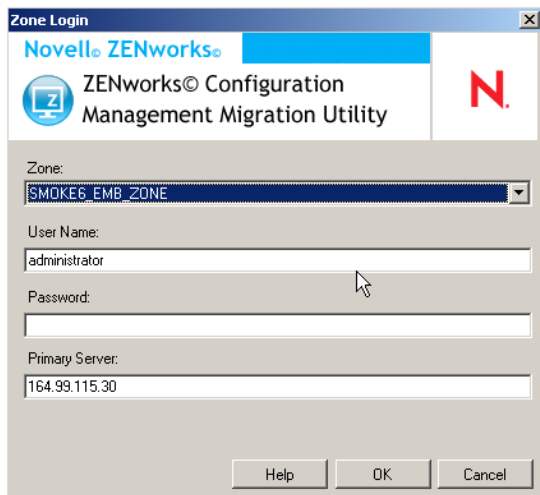
## A.6 Select ZAM Database Field

The *Select ZAM Database* field shows your source database, which is your ZENworks Asset Management 7.5 database. Click the database icon to the right of the field to open the *ZAM Database Login* dialog box, where you can log in to your source database.



## A.7 Select Zone Field

The *Select Zone* field shows the migration destination, which is your Novell ZENworks Configuration Management Management Zone. Click the database icon to the right of the field to open the *Zone Login* dialog box, where you can log in to your destination database.



## A.8 Start Migration Button

After you select the objects you want to migrate, click *Start Migration* to begin the migration process.

## A.9 Cancel Button

The *Cancel* button stops the migration process at the point when you click it. Objects that have already migrated when the *Cancel* button is clicked are not rolled back, but are actually migrated.