

Integration and Streaming Guide

ZENworks® Application Virtualization 11.2

January 2016

Novell.



Legal Notices

Novell, Inc., makes no representations or warranties with respect to the contents or use of this documentation, and specifically disclaims any express or implied warranties of merchantability or fitness for any particular purpose. Further, Novell, Inc., reserves the right to revise this publication and to make changes to its content, at any time, without obligation to notify any person or entity of such revisions or changes.

Further, Novell, Inc., makes no representations or warranties with respect to any software, and specifically disclaims any express or implied warranties of merchantability or fitness for any particular purpose. Further, Novell, Inc., reserves the right to make changes to any and all parts of Novell software, at any time, without any obligation to notify any person or entity of such changes.

Any products or technical information provided under this Agreement may be subject to U.S. export controls and the trade laws of other countries. You agree to comply with all export control regulations and to obtain any required licenses or classification to export, re-export or import deliverables. You agree not to export or re-export to entities on the current U.S. export exclusion lists or to any embargoed or terrorist countries as specified in the U.S. export laws. You agree to not use deliverables for prohibited nuclear, missile, or chemical biological weaponry end uses. See the [Novell International Trade Services Web page \(http://www.novell.com/info/exports/\)](http://www.novell.com/info/exports/) for more information on exporting Novell software. Novell assumes no responsibility for your failure to obtain any necessary export approvals.

Copyright © 2008-2016 Novell, Inc. All rights reserved. No part of this publication may be reproduced, photocopied, stored on a retrieval system, or transmitted without the express written consent of the publisher.

Novell, Inc.

1800 South Novell Place

Provo, UT 84606

U.S.A.

www.novell.com

Online Documentation: To access the latest online documentation for this and other Novell products, see the [Novell Documentation Web page \(http://www.novell.com/documentation/\)](http://www.novell.com/documentation/).

Novell Trademarks

For Novell trademarks, see [the Novell Trademark and Service Mark list \(http://www.novell.com/company/legal/trademarks/tmlist.html\)](http://www.novell.com/company/legal/trademarks/tmlist.html).

Third-Party Materials

All third-party trademarks are the property of their respective owners.

Contents

About This Guide	5
1 Overview	7
1.1 Using the Configuration Wizard to Prepare Applications for Virtualization	7
1.2 Manually Preparing Applications for Virtualization	10
2 Preparing GroupWise Messenger for Virtualization	11
3 Preparing GroupWise and GroupWise Notify for Virtualization	15
4 Preparing Novell OpenOffice or LibreOffice for Virtualization	21
5 Using Virtual Applications with ZENworks Configuration Management	27
5.1 ZENworks Startup Options	27
5.2 ZENworks Bundle Publishing	28
6 Streaming Virtual Applications	31
6.1 Streaming Tools Included in the Product Download	31
6.2 Streaming Virtual Applications from the Web	32
6.2.1 Preparing Applications for Streaming	32
6.2.2 Setting Up Files on a Web Server	35
6.2.3 Adding File Types to the Server's MIME Type List	36
6.2.4 Streaming License Certificates	36
6.2.5 Adding Applications to the Server	36
6.2.6 Testing the Streaming Server Setup	38
6.3 Streaming Virtual Applications from a Network Share	40
6.3.1 Setting Up SpoonPlay to Stream Applications	40
6.3.2 Using the SpoonPlay Command Line	40
6.3.3 Integrating SpoonPlay with the SpoonReg Command Line Tool	41
6.3.4 Using a Network Share with ZENworks Application Virtualization	42

About This Guide

This guide provides information about using Novell ZENworks Application Virtualization to prepare Novell products for use in your environment. The information in this guide is organized as follows:

- ♦ Chapter 1, “Overview,” on page 7
- ♦ Chapter 2, “Preparing GroupWise Messenger for Virtualization,” on page 11
- ♦ Chapter 3, “Preparing GroupWise and GroupWise Notify for Virtualization,” on page 15
- ♦ Chapter 4, “Preparing Novell OpenOffice or LibreOffice for Virtualization,” on page 21
- ♦ Chapter 5, “Using Virtual Applications with ZENworks Configuration Management,” on page 27
- ♦ Chapter 6, “Streaming Virtual Applications,” on page 31

Audience

This guide is intended for administrators.

Feedback

We want to hear your comments and suggestions about this manual and the other documentation included with this product. Please use the User Comments feature at the bottom of each page of the online documentation.

Additional Documentation

ZENworks Application Virtualization is supported by other documentation (in PDF format) that you can use to learn about and implement the product. For additional documentation, see the [ZENworks Application Virtualization Web site \(http://www.novell.com/documentation/zav11/index.html\)](http://www.novell.com/documentation/zav11/index.html). You can also click *Help > Novell ZENworks Application Virtualization* from within the program to access this information.

1 Overview

Novell ZENworks Application Virtualization lets you convert applications that run on Microsoft Windows into self-contained virtual applications. After being virtualized, an application becomes a single, isolated file that runs instantly from anywhere, including a thumb drive or other removable media. Unlike traditional installation methods, the single virtual application file does not require a separate setup process, and does not rely on external components and runtimes, reboots, or administrative privileges. The application is now isolated from other system applications, preventing DLL conflicts and other deployment nightmares, yet the experience for the application's user is unchanged.

ZENworks Application Virtualization lets you use the Configuration Wizard to prepare applications for virtualization.

To virtualize applications such as Novell GroupWise or GroupWise Messenger, you have the following options:

- ◆ Use the options in the Configuration Wizard to virtualize these applications. This process is recommended for first-time users. For more information, see [Section 1.1, "Using the Configuration Wizard to Prepare Applications for Virtualization," on page 7](#).
- ◆ Configure these applications manually. This guide provides step-by-step information to help you use Novell ZENworks Application Virtualization to create virtual executable files to run virtual applications and recipes.

You can use the information in this guide to customize the virtualized files or you can use the information to better understand the virtualization process. For more information, see [Section 1.2, "Manually Preparing Applications for Virtualization," on page 10](#).

- ◆ If you use Novell ZENworks Configuration Management in your environment, you can configure your virtual application so that it checks to ensure that the ZENworks Adaptive Agent is installed on the device and that the device is registered to your ZENworks Management Zone before the application can be launched. You can also use ZENworks Application Virtualization to publish ZENworks bundles that you can distribute by using ZENworks Configuration Management. For more information, see [Appendix 5, "Using Virtual Applications with ZENworks Configuration Management," on page 27](#).

1.1 Using the Configuration Wizard to Prepare Applications for Virtualization

ZENworks Application Virtualization includes a Configuration Wizard that helps you prepare common applications for virtualization. The recipes are dynamic, so they are visible only on the platform or architecture on which they are supported.

You can now run a desktop scan on the local machine for installed applications and match them to the current template list. An administrator can then select from the list of matched applications and virtualize one or more in a single step.

The following applications are available in the template list:

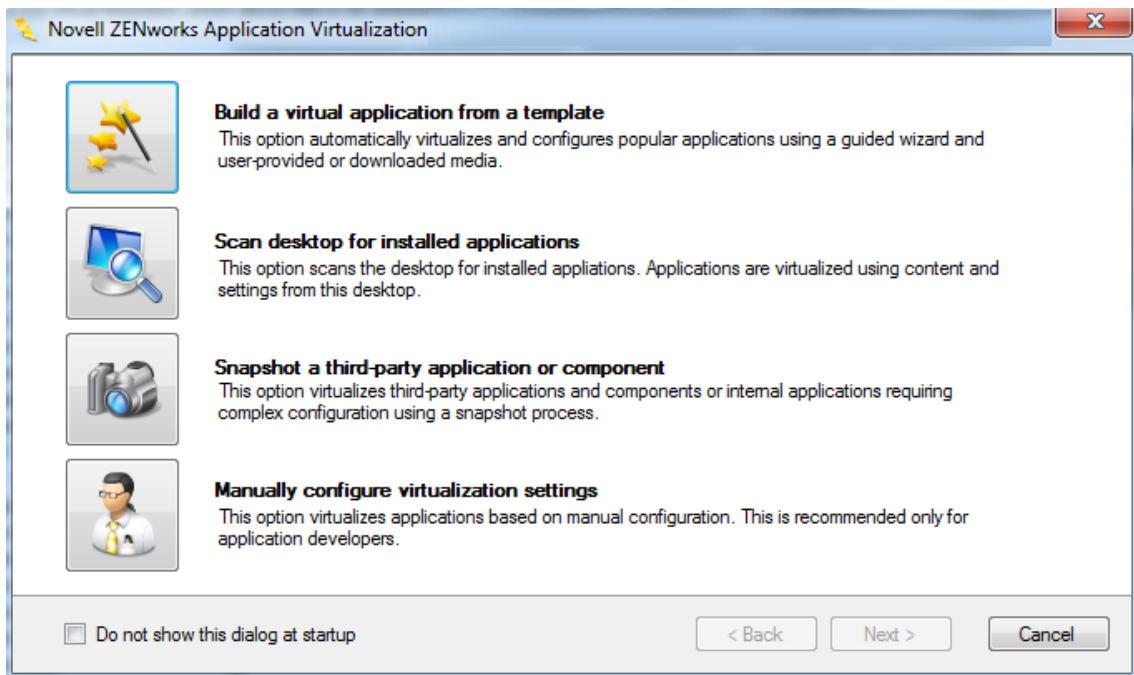
- ◆ **7-Zip:** An open source utility used to manipulate archives.
- ◆ **Apple Safari:** An application used to browse the Internet.

- ♦ **Adobe applications:** Includes a suite of Adobe products.
- ♦ **GIMP:** GNU Image Manipulation Program. An open source application used to process digital graphics and photographs.
- ♦ **Google Chrome:** An application used to browse the Internet.
- ♦ **Google SketchUp:** An application used for 3-D content creation.
- ♦ **Google Talk:** An application used for instant messaging and PC-to-PC voice calls.
- ♦ **LibreOffice:** A suite of office-productivity applications, including a word processor, presentation and spreadsheet applications, an HTML editor, and a drawing tool.
- ♦ **Microsoft Internet Explorer:** An application used to browse the Internet.
- ♦ **Microsoft Office:** A suite of office-productivity applications.
- ♦ **Microsoft Project:** An application used to manage projects.
- ♦ **Microsoft Visio:** An application used to create diagrams.
- ♦ **Mozilla Firefox:** An open-source application used to browse the Internet.
- ♦ **Novell GroupWise Client:** A collaboration software solution used to provide information workers with e-mail, calendaring, instant messaging, task management, and contact and document management functions.
- ♦ **Novell GroupWise Messenger:** A corporate, cross-platform instant messaging application used to send instant messages in a secure environment and to create contact lists.
- ♦ **Novell OpenOffice:** A suite of office-productivity applications, including a word processor, presentation and spreadsheet applications, an HTML editor, and a drawing tool. Novell OpenOffice contains enhancements and bug fixes that are not available in the standard edition.
- ♦ **OpenOffice:** A suite of office-productivity applications, including a word processor, presentation and spreadsheet applications, an HTML editor, and a drawing tool.
- ♦ **Opera:** An application used to browse the Internet.
- ♦ **Quicken 2011:** An application used to manage finances on the desktop.

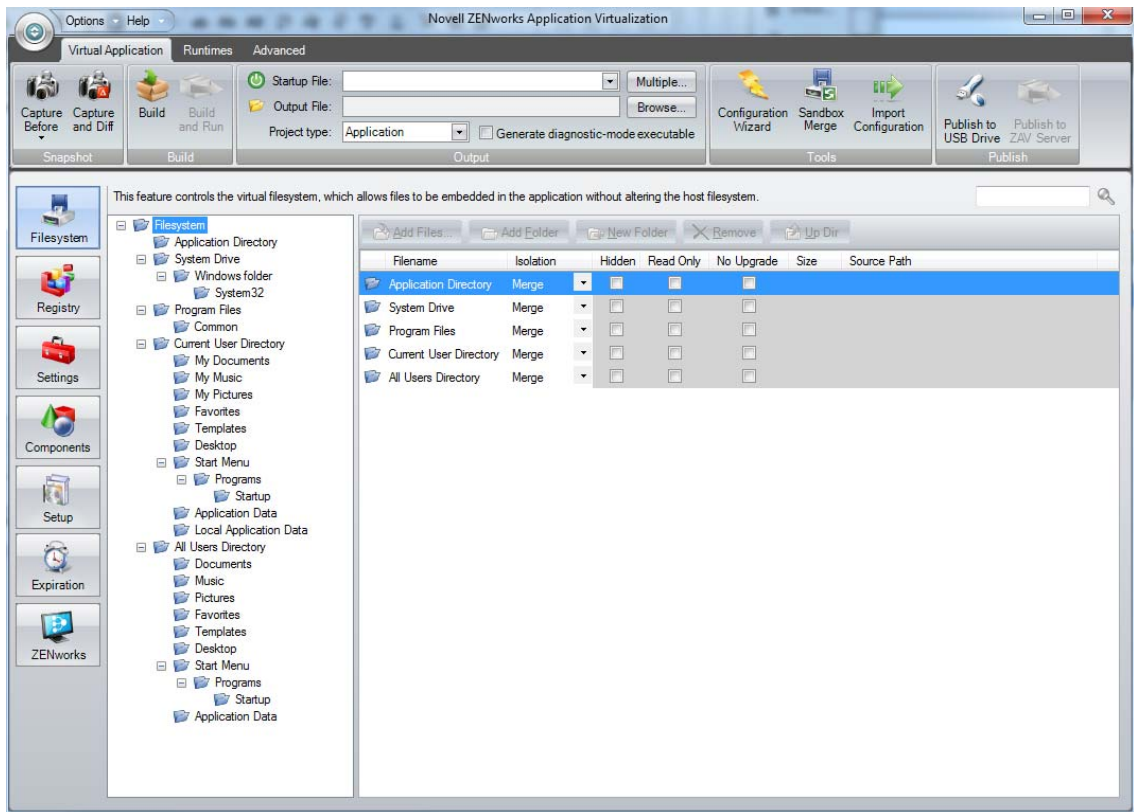
To use the Configuration Wizard to virtualize applications:

- 1 Click *Start > All Programs > Novell ZENworks Application Virtualization > Novell ZENworks Application Virtualization >* to start the application.

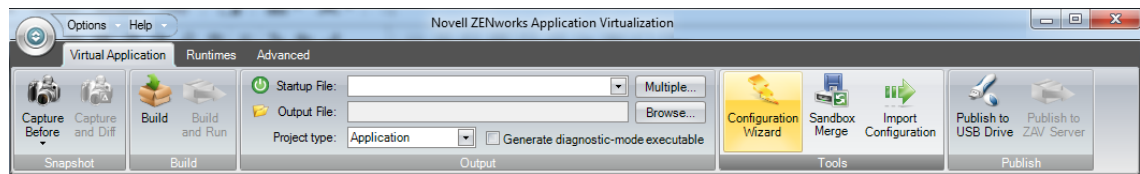
The Novell ZENworks Application Virtualization startup dialog box is displayed. You can use this dialog box to scan, build, manually configure, or take a snapshot of the virtual applications installed on the device. If you do not want to see this dialog when you start the virtual application, select *Do not show this dialog at startup*.



- 2 Click *Cancel* or close the startup dialog box to view the *Novell ZENworks Application Virtualization* application.



- 3 Click the *Configuration Wizard* button in the *Tools* section of the *Virtual Application* ribbon.



- 4 Click *Build a virtual application from a template*.
- 5 Select the desired application from the *Application* drop-down list.
- 6 Click *Next*, then follow the instructions in the wizard.

1.2 Manually Preparing Applications for Virtualization

Most commercial applications, including GroupWise and Novell OpenOffice, require complex combinations of file system and registry entries to function properly. To facilitate virtualization of these applications, ZENworks Application Virtualization creates snapshot application installations and automatically configures itself based on modifications made to the host system during application setup.

The process of creating a snapshot uses images of the host machine that are taken at different points in time to determine the virtual application configuration.

Prior to installing the application to be virtualized, a snapshot is taken that captures the state of the host device without the target application installed. After installing the application, a second snapshot is taken that captures all changes to the host device. ZENworks Application Virtualization then computes the changes, or delta, between the snapshots, and inserts these changes into the configuration.

You can use the configuration information to create executable files that behave differently, depending on the application you are preparing to use:

- ♦ **A Single Executable File to Launch an Application:** To prepare GroupWise Messenger, you can create a single executable file to launch the program. For more information, see [Chapter 2, “Preparing GroupWise Messenger for Virtualization,”](#) on page 11.

To prepare Novell OpenOffice or LibreOffice, you have the option to create a single executable file to launch the OpenOffice.org Quickstarter, which lets users choose the program to launch (Writer, Calculator, Draw, Impress, or Math). For more information, see [Chapter 4, “Preparing Novell OpenOffice or LibreOffice for Virtualization,”](#) on page 21.

- ♦ **A Single Executable File to Simultaneously Launch Multiple Applications:** To prepare GroupWise and Notify, you can create a single executable file to launch both programs simultaneously. For more information, see [Chapter 3, “Preparing GroupWise and GroupWise Notify for Virtualization,”](#) on page 15.
- ♦ **A Single Executable File to Expose Multiple Executable Startup Files:** To prepare Novell OpenOffice or LibreOffice, you can create a single executable file to expose multiple executable startup files (Writer, Calculator, Draw, Impress, or Math). ZENworks Application Virtualization allows multiple entry points into the virtual application to be triggered based on a command line argument to the virtual application executable. If you use Novell ZENworks Desktop Management or ZENworks Configuration Management to distribute applications, command line arguments let you use the same application object for all OpenOffice.org programs. For more information, see [Chapter 4, “Preparing Novell OpenOffice or LibreOffice for Virtualization,”](#) on page 21.

2 Preparing GroupWise Messenger for Virtualization

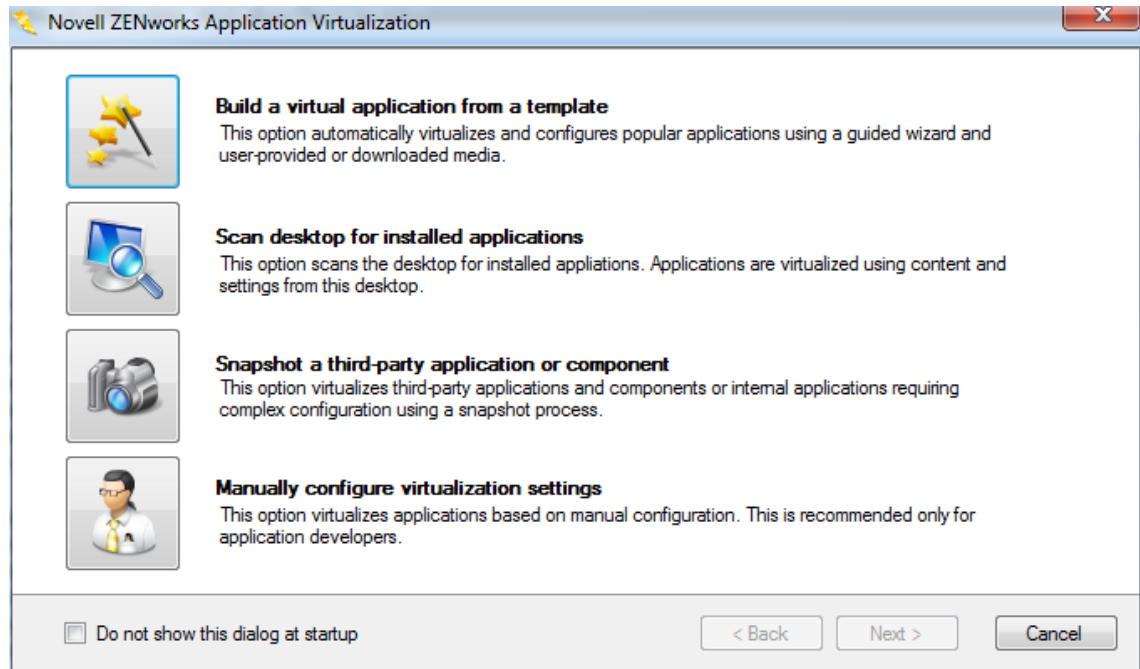
The section contains step-by-step information to help you use Novell ZENworks Application Virtualization to prepare Novell GroupWise Messenger to run as a virtual application.

- 1 Install ZENworks Application Virtualization onto a clean machine.

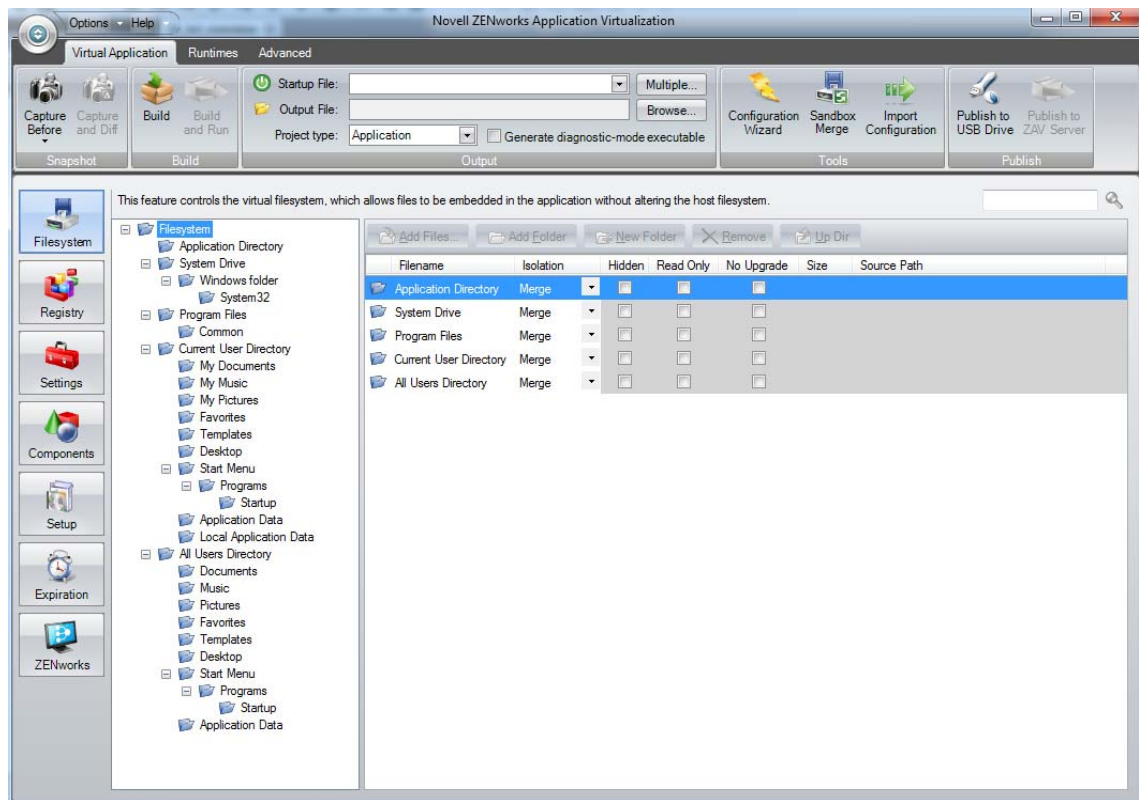
You can prepare a clean machine by uninstalling GroupWise Messenger. However, we recommend that you start the process on a machine that has only the desired Windows OS, any applicable OS service packs, and ZENworks Application Virtualization installed. Starting with a machine that includes only these items helps to ensure that your virtual application does not contain settings that might cause conflicts.

- 2 Click *Start > All Programs > Novell ZENworks Application Virtualization > Novell ZENworks Application Virtualization* to start the application.

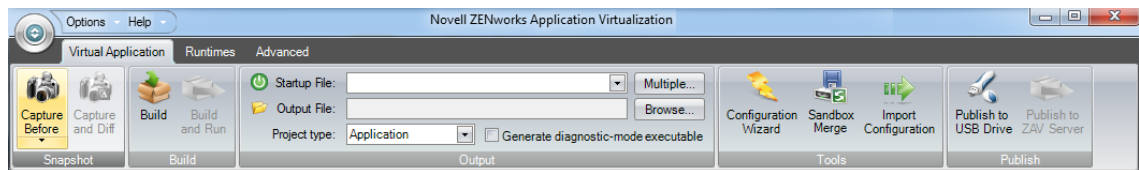
The Novell ZENworks Application Virtualization startup dialog box is displayed. You can use this dialog box to scan, build, manually configure, or take a snapshot of the virtual applications installed on the device. If you do not want to see this dialog when you start the virtual application, select *Do not show this dialog at startup*.



- 3 Click *Cancel* or close the startup dialog box to view the *Novell ZENworks Application Virtualization* application.



- Click *Capture Before* in the *Snapshot* section of the *Virtual Application* ribbon.



This process captures the first snapshot image. The process iterates through the file system and registry, and therefore might take several minutes to complete.

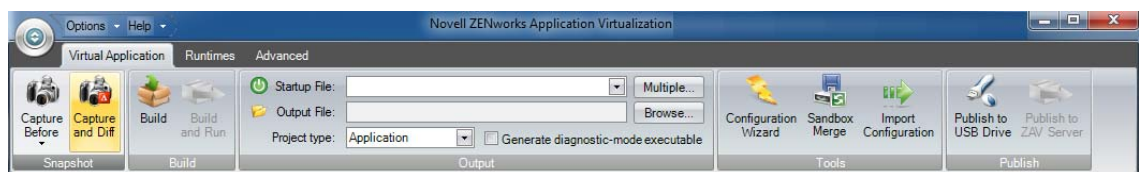
- (Optional) Click the down-arrow on the bottom of the *Capture Before* button, then click *Save Snapshot*.

Saving the first snapshot lets you skip this step when creating a snapshot for subsequent applications from the same machine image.

- Install GroupWise Messenger.

For installation instructions, see the [GroupWise Documentation Web site \(http://www.novell.com/documentation/groupwise.html\)](http://www.novell.com/documentation/groupwise.html). Depending on the version of GroupWise Messenger that you want to deploy in your environment, click the appropriate link, then locate and display the *Installation Guide*.

- Click *Capture and Diff* in the *Snapshot* section of the *Virtual Application* ribbon.

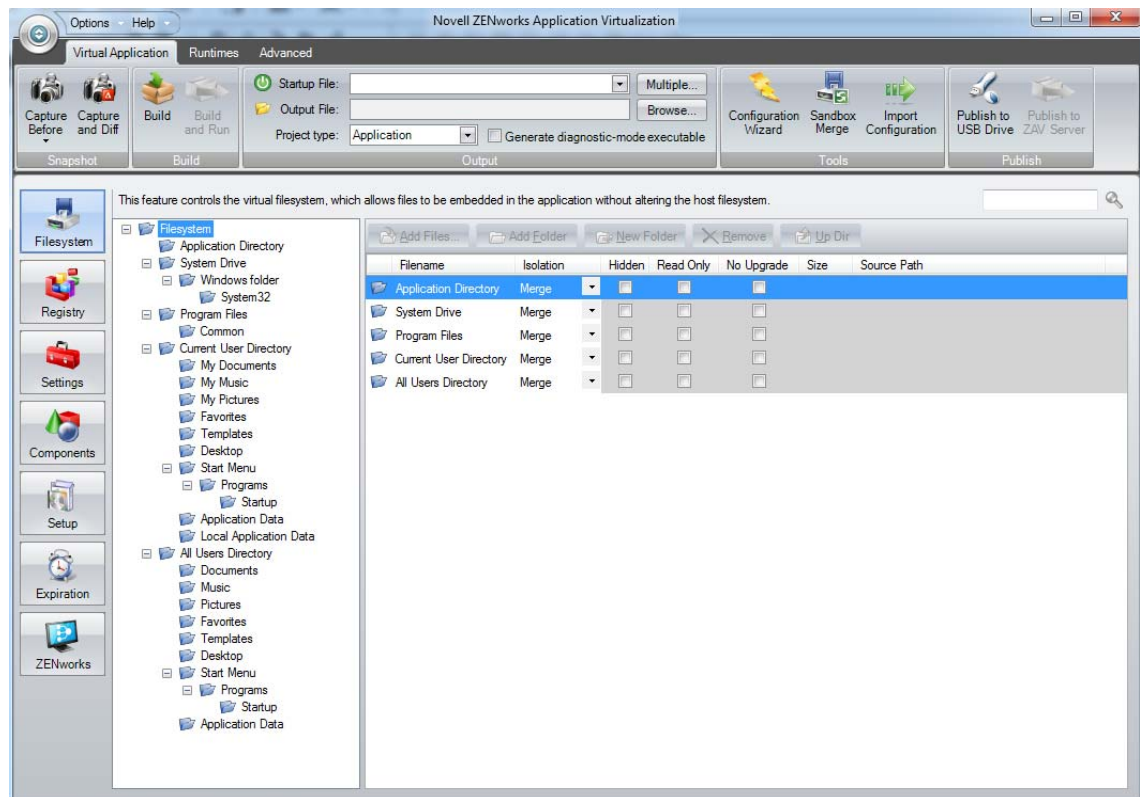


- 8 Browse to and select the destination folder to store the snapshot, then click *OK*.

This process captures the second snapshot, computes the delta between the two snapshots, and populates the virtual application with the delta entries. This process might take a few minutes.

- 9 (Optional) Click the *Filesystem* button on the left side of the ZENworks Application Virtualization console to review the file system and registry entries.

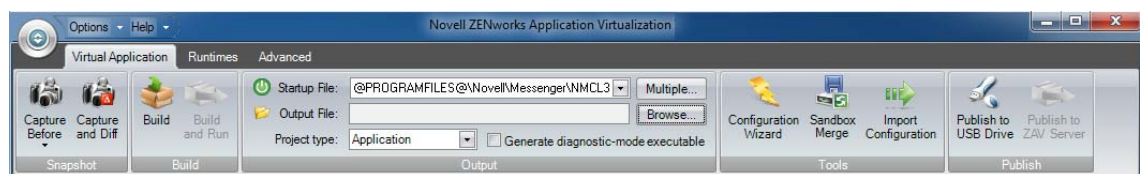
You can remove any files or settings that are not required for proper execution of your virtual application. Removing unused entries reduces virtual application size. However, accidental removal of a required resource might cause your virtual application to not function properly.



- 10 (Conditional) If you use ZENworks Configuration Management in your environment and you want to control how virtual applications are used or to create and publish ZENworks bundles, click the *ZENworks* button on the left side of the ZENworks Application Virtualization console to display the ZENworks options.

For more information, continue with the instructions in [Appendix 5, "Using Virtual Applications with ZENworks Configuration Management,"](#) on page 27.

- 11 From the *Startup File* drop-down list, select the GroupWise Messenger executable file (NMCL32.exe).



- 12 Click *Build* in the *Build* section of the *Virtual Application* ribbon to process the application.

13 Specify the location and filename of the virtual application executable file.

14 Test the virtual application executable file on another machine.

The executable file is now ready to distribute to users. You can use any method you want to distribute the file, including USB thumb drives.

You can also use Novell ZENworks or Novell ZENworks Configuration Management to distribute the file. For more information, see the [ZENworks Documentation Web site \(http://www.novell.com/documentation/zenworks.html\)](http://www.novell.com/documentation/zenworks.html).

Users must authenticate to the GroupWise Messenger system after they launch the virtual application.

3 Preparing GroupWise and GroupWise Notify for Virtualization

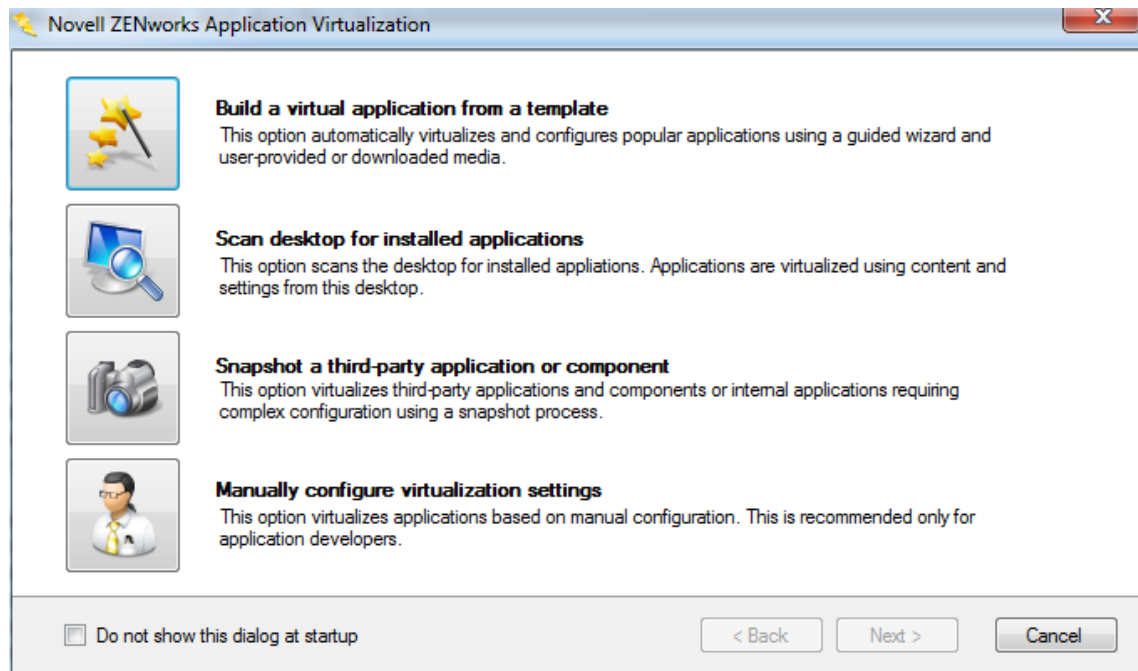
The section contains step-by-step information to help you use Novell ZENworks Application Virtualization to prepare Novell GroupWise and GroupWise Notify to run as virtual applications.

- 1 Install ZENworks Application Virtualization onto a clean machine.

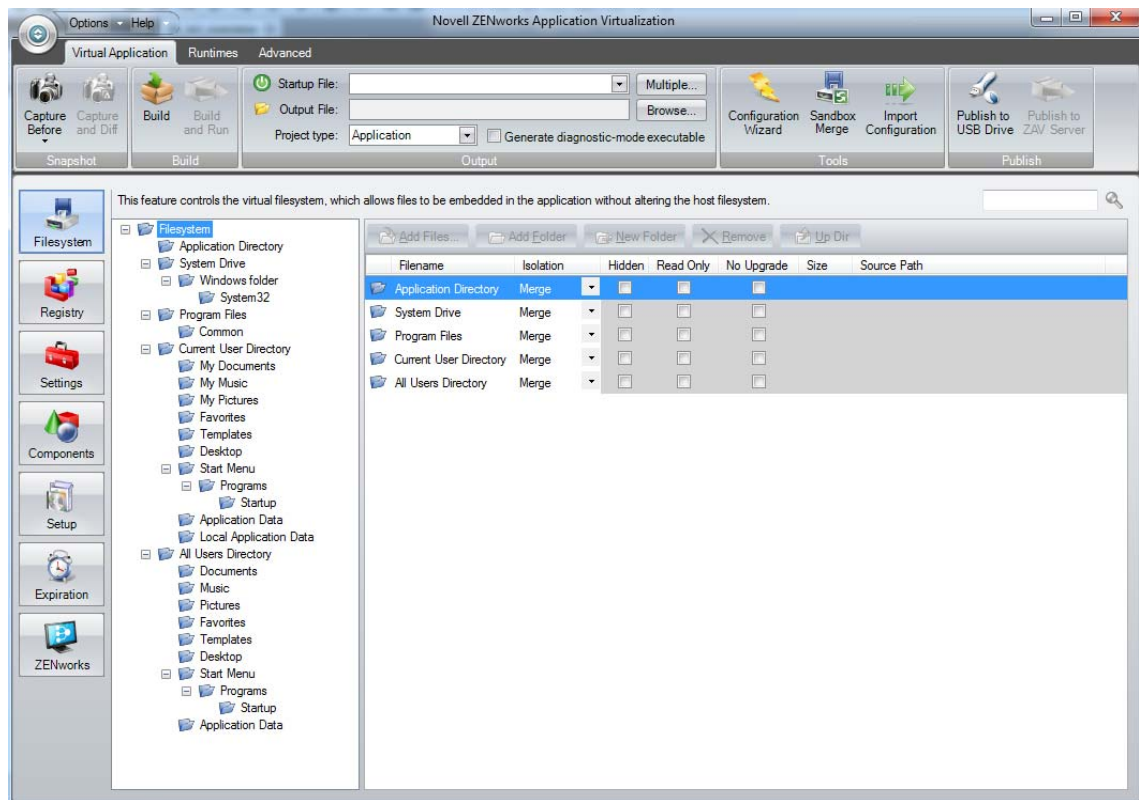
You can prepare a clean machine by uninstalling GroupWise and GroupWise Notify. However, we recommend that you start the process on a machine that has only the desired Windows OS, any applicable OS service packs, and ZENworks Application Virtualization installed. Starting with a machine that includes only these items helps to ensure that your virtual application does not contain settings that might cause conflicts.

- 2 Click *Start > All Programs > Novell ZENworks Application Virtualization > Novell ZENworks Application Virtualization* to start the application.

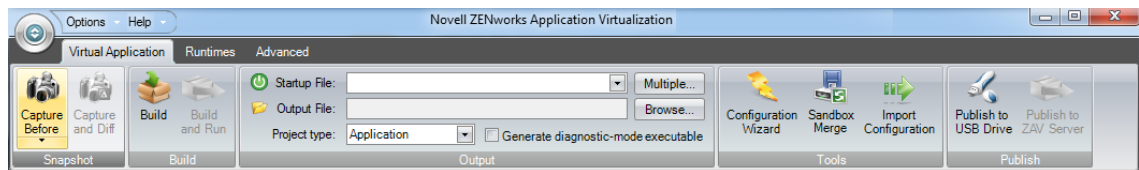
The Novell ZENworks Application Virtualization startup dialog box is displayed. You can use this dialog box to scan, build, manually configure, or take a snapshot of the virtual applications installed on the device. If you do not want to see this dialog when you start the virtual application, select *Do not show this dialog at startup*.



- 3 Click *Cancel* or close the startup dialog box to view the *Novell ZENworks Application Virtualization* application.



- Click *Capture Before* in the *Snapshot* section of the *Virtual Application* ribbon.



This process captures the first snapshot image. The process iterates through the file system and registry, and might take several minutes to complete.

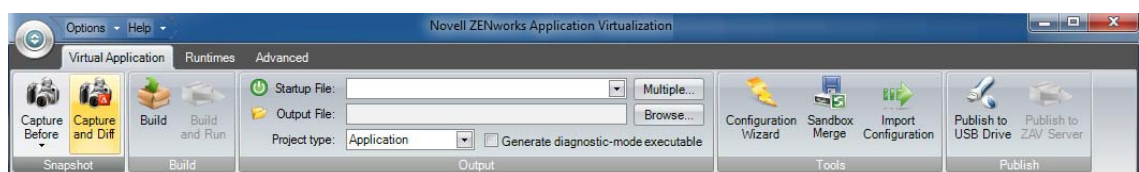
- (Optional) Click the down-arrow on the bottom of the *Capture Before* button, then click *Save Snapshot*.

Saving the first snapshot lets you skip this step when creating a snapshot for subsequent applications from the same machine image.

- Install GroupWise.

For installation instructions, see the [GroupWise Documentation Web site \(http://www.novell.com/documentation/groupwise.html\)](http://www.novell.com/documentation/groupwise.html). Depending on the version of GroupWise that you want to deploy in your environment, click the appropriate link, then locate and display the *Installation Guide*.

- Click *Capture and Diff* in the *Snapshot* section of the *Virtual Application* ribbon.



- 8 Browse to and select the destination folder to store the snapshot, then click *OK*.

This process captures the second snapshot, computes the delta between the two snapshots, and populates the virtual application with the delta entries. This process might take a few minutes.

- 9 (Optional) Click the *Filesystem* button on the left side of the ZENworks Application Virtualization console to review the file system and registry entries.

You can remove any files or settings that are not required for proper execution of your virtual application. Removing unused entries reduces virtual application size. However, accidental removal of a required resource might cause your virtual application to not function properly.

- 10 (Conditional) If you plan to use the GroupWise Caching mode or the Archive feature, click the *Filesystem* button on the left side of the ZENworks Application Virtualization console, then add the sandbox data area folders you want to embed in the application executable to store cached or archived data. For example, you could create a *Cache* folder and an *Archive* folder for users.

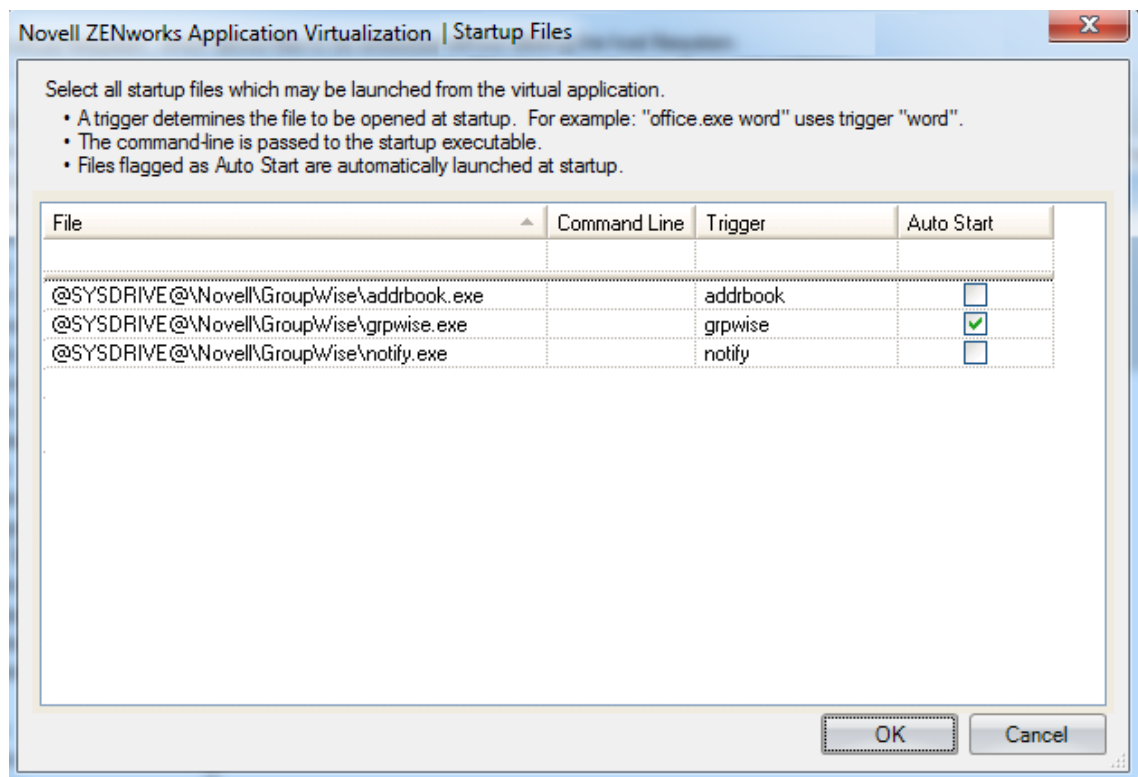
Caching mode stores a copy of a user's network mailbox, including messages and other information, on a local drive. The archive saves mail or phone messages, appointments, reminder notes, or tasks to a designated database on a local drive. For more information, see the [GroupWise Documentation Web site \(http://www.novell.com/documentation/groupwise.html\)](http://www.novell.com/documentation/groupwise.html).

Ensure that you have enough disk space in your ZENworks Application Virtualization sandbox to store that mailbox. For information, see the *Configuring the sandbox location* topic in online help (click *Help* > click *Novell ZENworks Application Virtualization Documentation 7* > expand the *Virtual Application Customization* book > click *Configuring the sandbox location*) or see the *Editing the virtual filesystem* topic in the online help (expand the *Configuring Virtual Applications* book > click *Editing the virtual filesystem*).

- 11 (Conditional) If you use ZENworks Configuration Management in your environment and you want to control how virtual applications are used or to create and publish ZENworks bundles, click the *ZENworks* button on the left side of the ZENworks Application Virtualization console to display the ZENworks options.

For more information, continue with the instructions in [Appendix 5, "Using Virtual Applications with ZENworks Configuration Management," on page 27](#).

- 12 Click the *Multiple* button on the right side of the *Startup File* drop-down list to display the Startup Files dialog box.



ZENworks Application Virtualization lets you launch both GroupWise, GroupWise Notify, and the GroupWise Address Book when users click the virtual application executable file.

- 13 Click the *Auto Start* check box next to the desired files so that they always automatically launched on virtual application startup, then click *OK*.

The *Auto Start* flag can be specified for multiple startup files to automatically launch multiple applications that are typically used together in a single session (also known as shotgunning).

- 14 Click *Build* in the *Build* section of the *Virtual Application* ribbon to process the application.
- 15 Specify the location and filename of the virtual application executable file.
- 16 Test the virtual application executable file on another machine.

The executable file is now ready to distribute to users. You can use any method you want to distribute the file, including USB thumb drives.

You can also use Novell ZENworks or Novell ZENworks Configuration Management to distribute the file. For more information, see the [ZENworks Documentation Web site \(http://www.novell.com/documentation/zenworks.html\)](http://www.novell.com/documentation/zenworks.html).

Users must authenticate to the GroupWise system after they launch the virtual application. The virtual application executable, as configured above, does not populate the username, password, or post office information. When the user logs in to the virtual GroupWise application the first time, the user can choose to save this information.

Users can use the virtualized GroupWise application on a machine that already has GroupWise installed. However, both instances of GroupWise cannot run at the same time. The authentication and post office information for the installed instance are not used for the virtualized instance of GroupWise.

The virtual executable file can be used to run GroupWise in Online, Remote, or Caching mode. For more information on these modes, see the [GroupWise Documentation Web site \(http://www.novell.com/documentation/groupwise.html\)](http://www.novell.com/documentation/groupwise.html).

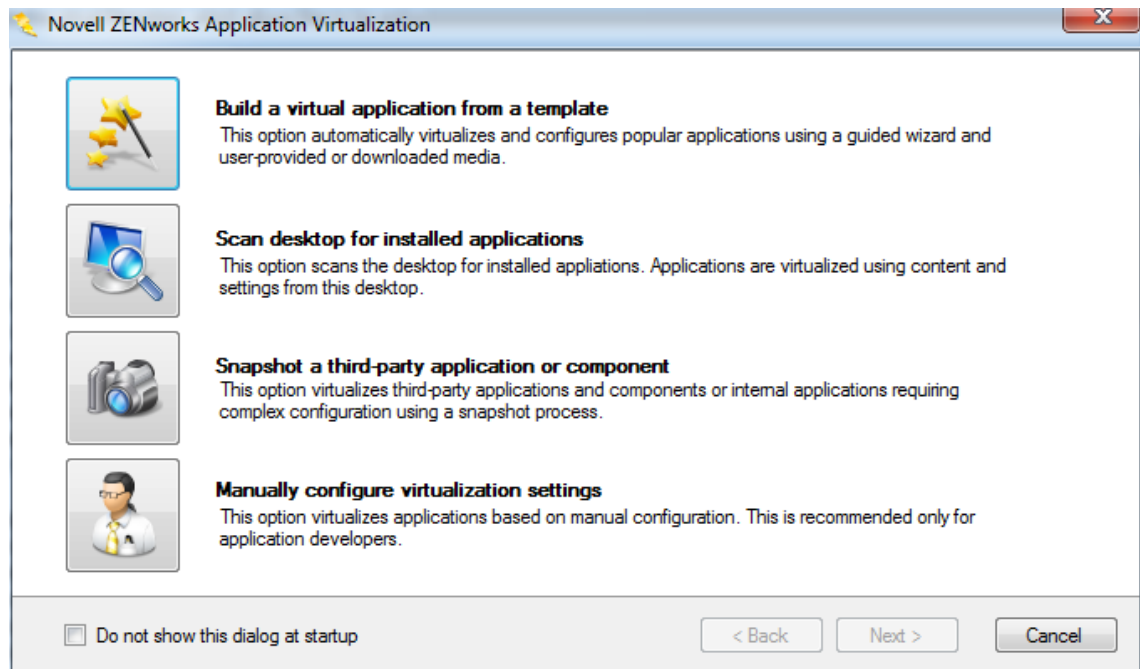
4 Preparing Novell OpenOffice or LibreOffice for Virtualization

The section contains step-by-step information to help you use Novell ZENworks Application Virtualization to prepare the programs in Novell OpenOffice or LibreOffice to run as virtual applications.

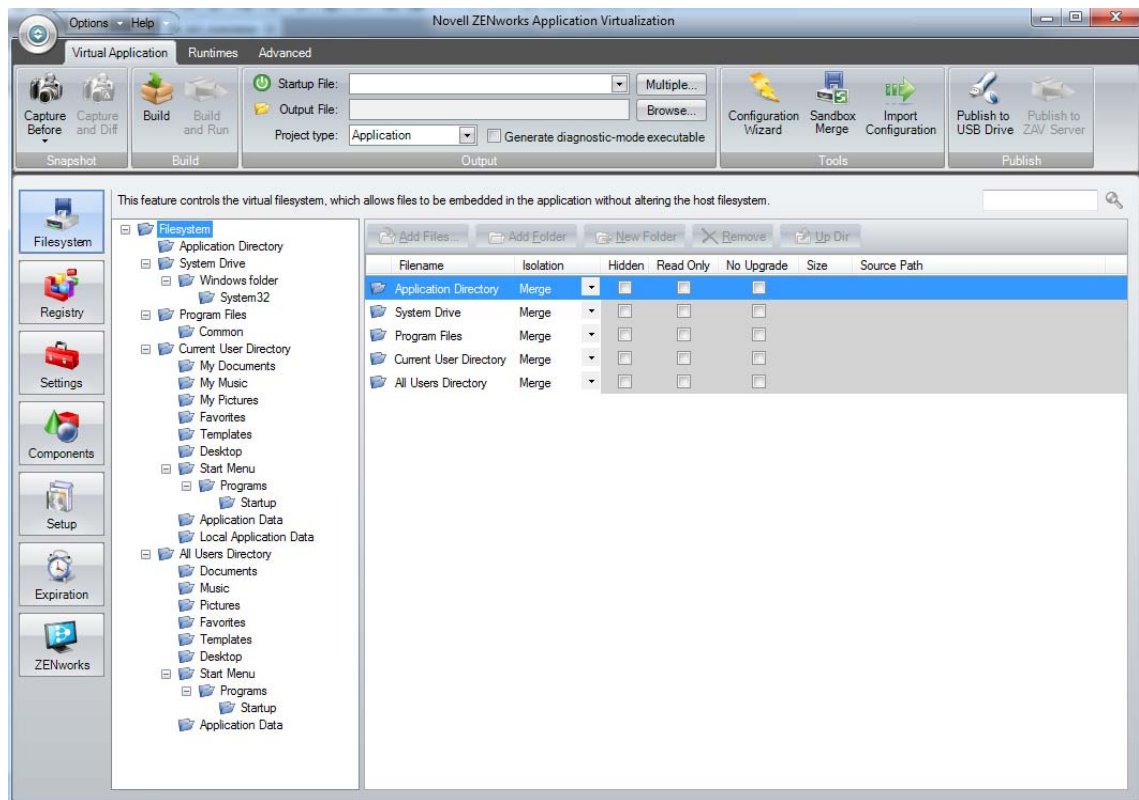
- 1 Install ZENworks Application Virtualization onto a clean machine.

You can prepare a clean machine by uninstalling Novell OpenOffice or LibreOffice. However, we recommend that you start the process on a machine that has only the desired Windows OS, any applicable OS service packs, and ZENworks Application Virtualization installed. Starting with a machine that includes only these items helps to ensure that your virtual application does not contain settings that might cause conflicts.

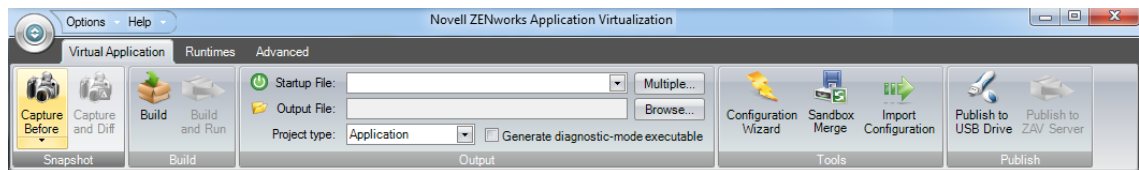
- 2 Click *Start > All Programs > Novell ZENworks Application Virtualization > Novell ZENworks Application Virtualization* to start the application.



- 3 Click *Cancel* or close the startup dialog box to view the application.



4 Click *Capture Before* in the *Snapshot* section of the *Virtual Application* ribbon.



This process captures the first snapshot image. The process iterates through the file system and registry, and might take several minutes to complete.

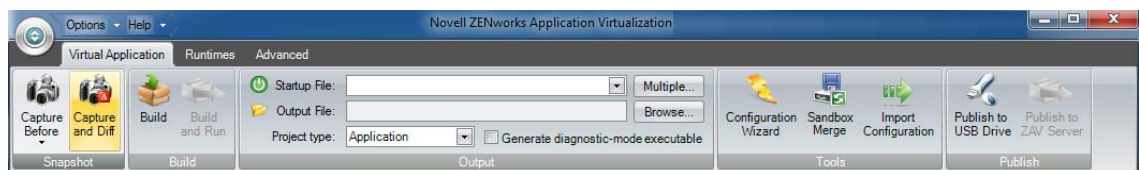
5 (Optional) Click the down-arrow on the bottom of the *Capture Before* button, then click *Save Snapshot*.

Saving the first snapshot lets you skip this step when snapshotting subsequent applications from the same machine image.

6 Install Novell OpenOffice.org.

You can download Novell OpenOffice and LibreOffice from the [Novell Downloads page \(http://download.novell.com\)](http://download.novell.com).

7 Click *Capture and Diff* in the *Snapshot* section of the *Virtual Application* ribbon.



8 Browse to and select the destination folder to store the snapshot, then click *OK*.

This process captures the second snapshot, computes the delta between the two snapshots, and populates the virtual application with the delta entries. This process might take a few minutes.

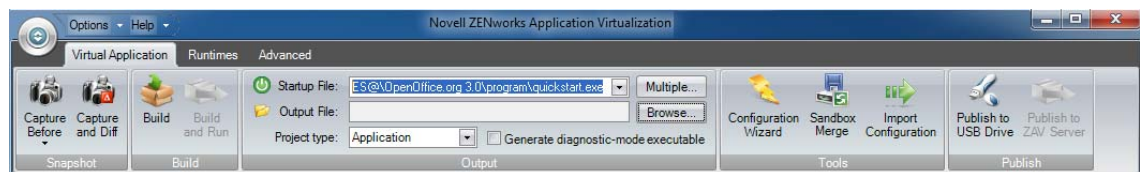
- 9 (Optional) Click the *Filesystem* button on the left side of the ZENworks Application Virtualization console to review the file system and registry entries.

You can remove any files or settings that are not required for proper execution of your virtual application. Removing unused entries reduces virtual application size. However, accidental removal of a required resource might cause your virtual application to not function properly.

- 10 (Conditional) If you use ZENworks Configuration Management in your environment and you want to control how virtual applications are used or to create and publish ZENworks bundles, click the *ZENworks* button on the left side of the ZENworks Application Virtualization console to display the ZENworks options.

For more information, continue with the instructions in [Appendix 5, “Using Virtual Applications with ZENworks Configuration Management,”](#) on page 27.

- 11 From the *Startup File* drop-down list, select the `quickstart.exe` file.

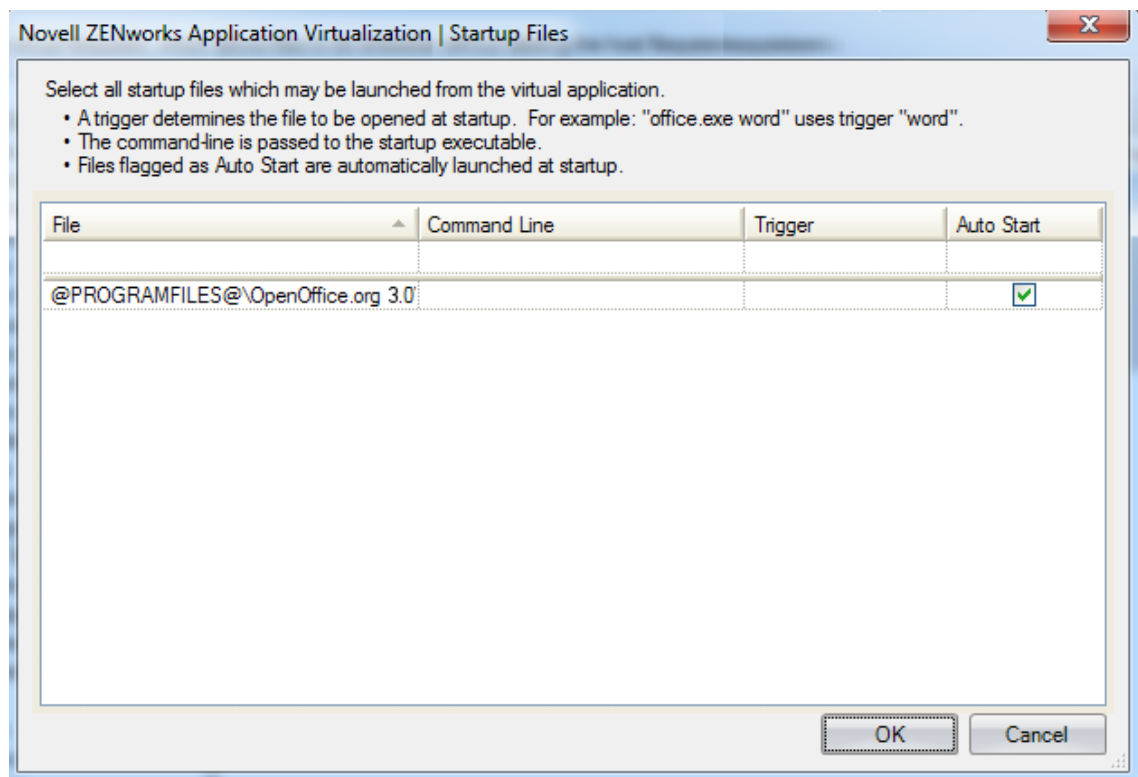


Selecting the `quickstart.exe` file causes the resulting executable file to launch the OpenOffice Quickstarter. The OpenOffice Quickstarter, which displays in the notification area, lets users choose which OpenOffice application to launch (Writer, Calculator, Draw, Impress, or Math).

You can also create a single executable file to expose multiple executable startup files (Writer, Calculator, Draw, Impress, or Math). ZENworks Application Virtualization allows multiple entry points into the virtual application to be triggered based on a command line argument to the virtual application executable. If you use Novell ZENworks or Novell ZENworks Configuration Management to distribute applications, command line arguments let you use the same application object for all OpenOffice.org programs.

If you want to use the OpenOffice Quickstarter, skip to [Step 13](#). If you want the virtual application executable file to expose multiple applications, continue with [Step 12](#).

- 12 (Optional) Click the *Multiple* button on the right side of the *Startup File* drop-down list to display the Startup Files dialog box.



- 12a** Click the *File* column on the first empty row in the startup file list, select `scal.c.exe`, then press Enter.

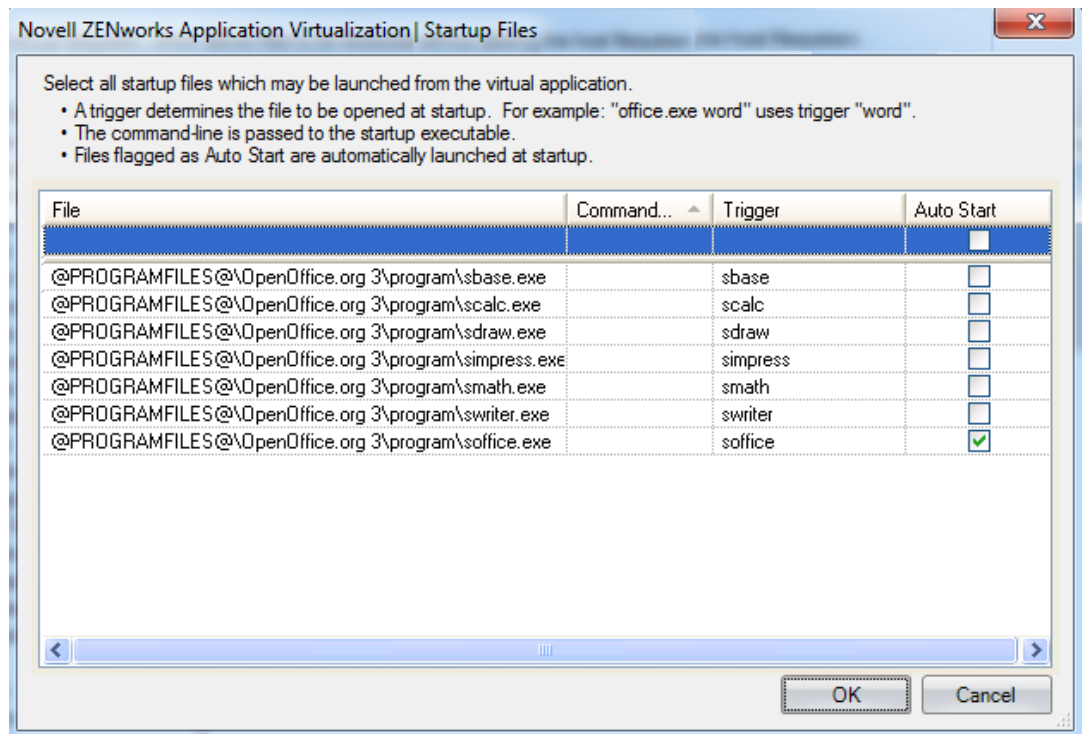
NOTE: If you cannot see the entire path to the `scal.c.exe` file, expand the *File* column. To expose the drop-down arrow to select the executable file, click in the *File* field.

- 12b** Click the *File* column on the first empty row in the startup file list, select `sdraw.exe`, then press Enter.
- 12c** Click the *File* column on the first empty row in the startup file list, select `simpressex.exe`, then press Enter.
- 12d** Click the *File* column on the first empty row in the startup file list, select `smath.exe`, then press Enter.
- 12e** Click the *File* column on the first empty row in the startup file list, select `swriter.exe`, then press Enter.
- 12f** Specify the desired command line trigger in the *Trigger* column for each row.

If you create a trigger for each application in Novell OpenOffice or LibreOffice, you can use the trigger as a command line option in ZENworks Desktop Management or ZENworks Configuration Management to launch the desired application from an application object. For example, if you specify `writer` for the trigger for OpenOffice Writer, you could use `writer` as the command line option to open Writer when the user opens the executable.

- 12g** (Conditional) Click the *Auto Start* check box next to any startup files that you want to always automatically launch on virtual application startup.

The *Auto Start* flag can be specified for multiple startup files to automatically launch multiple applications that are typically used together in a single session (also known as shotgunning).



- 12h Click **OK**.
- 13 Click **Build** in the **Build** section of the **Virtual Application** ribbon to process the application.
- 14 Specify the location and filename of the virtual application executable file.
- 15 Test the virtual application executable file on another machine.

The executable file is now ready to distribute to users. You can use any method you want to distribute the file, including USB thumb drives.

You can also use Novell ZENworks or Novell ZENworks Configuration Management to distribute the file. For more information, see the [ZENworks Documentation Web site \(http://www.novell.com/documentation/zenworks.html\)](http://www.novell.com/documentation/zenworks.html).

ZENworks Application Virtualization supports publishing multiple bundles to ZENworks Configuration Management in one step.

5 Using Virtual Applications with ZENworks Configuration Management

If you use Novell ZENworks Configuration Management in your environment, you can control how virtual application are used and you can create and publish ZENworks bundles used to distribute virtual applications to users.

The following sections contain more information:

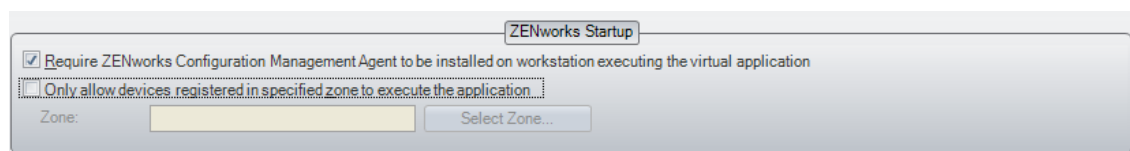
- [Section 5.1, “ZENworks Startup Options,” on page 27](#)
- [Section 5.2, “ZENworks Bundle Publishing,” on page 28](#)

5.1 ZENworks Startup Options

ZENworks Application Virtualization can be configured to require the ZENworks Adaptive Agent to be installed on the host device executing the virtual application. By default, virtual applications built with ZENworks Application Virtualization do not require the ZENworks Adaptive Agent.

To configure the ZENworks Startup options:

- 1 While configuring the virtual application, click the *ZENworks* button on the left side of the ZENworks Application Virtualization console to display the ZENworks Startup settings.



- 2 Select the *Require ZENworks Configuration Management Agent to be installed on workstation executing the virtual application* check box.

The ZENworks Adaptive Agent is part of the ZENworks Configuration Management software that is installed on each managed device to let the ZENworks administrator manage devices over the network.

If the ZENworks Adaptive Agent is not installed on the device attempting to launch the virtual application, it cannot be launched.

- 3 (Conditional) Select the *Only allow devices registered in specified zone to execute the application* check box, click *Select Zone*, specify the ZENworks Server Address and the Zone, then click *OK*.

The Management Zone is the management domain that includes the ZENworks Primary Servers and managed devices in your ZENworks system.

When specifying the ZENworks Server Address, you might need to use the secure HTTP prefix (`https://`) to connect to a secure ZENworks Configuration Management Server. If the ZENworks Configuration Management Server has been configured to use a custom port number, you might need to use a port number suffix (`:81`).

If the device attempting to launch the virtual application is not registered to the specified Management Zone, the application cannot be launched.

- 4 Continue with the steps for configuring the virtual application:
 - ♦ GroupWise Messenger: [Step 11 on page 13](#).
 - ♦ GroupWise and GroupWise Notify: [Step 12 on page 17](#).
 - ♦ Novell OpenOffice or LibreOffice: [Step 11 on page 23](#).

5.2 ZENworks Bundle Publishing

The ZENworks Bundle Publishing options let you create a ZENworks Configuration Management bundle that contains the virtualized application and publish the bundle to your ZENworks system. You can also group bundles together for ease of distribution and administration.

Software is distributed by ZENworks Configuration Management through the use of bundles. A bundle consists of all the files, configuration settings, installation instructions, and so forth required to deploy and manage the application or files on a device.

- 1 While configuring the virtual application, click the *ZENworks* button on the left side of the ZENworks Application Virtualization console to display the ZENworks Bundle Publishing settings.

- 2 Fill in the fields:

Project Type: Select *MSI* or *Executable*. The MSI or Executable must be built before publication.

Zone: Click *Select Zone*, specify the ZENworks Server Address, click *Connect*, log in to the ZENworks Server with the appropriate Username and Password, then click *OK*.

The Management Zone is the management domain that includes the ZENworks Primary Servers and managed devices in your ZENworks system.

Bundle Name: Specify a name for the bundle.

Bundle Folder: Specify the name of the ZENworks Control Center folder where you want the bundle to reside.

A folder is an organizational object. Folders are used to structure bundles and bundle groups into a manageable hierarchy for the ZENworks system.

Bundle Group: Specify a name for the bundle group. Creating bundle groups eases administration efforts by letting you assign the group, rather than each individual bundle, to devices and users.

Install Path: Specify the installation path that you want to use for the application on managed devices.

Account: Specify the ZENworks Configuration Management administrator username and password.

- 3 (Optional) Select the *Store Zone credentials in .xappl file* option to avoid being prompted to specify the administrator username and password in the future.

IMPORTANT: This is a potential security risk because the ZENworks credentials are stored in the `.xappl` configuration file as plain text.

- 4 (Optional) Select the *Automatically publish applications as ZENworks bundle after successful build* option to automatically create the ZENworks bundle after it is built.
- 5 (Conditional) Select the *Automatically publish applications as ZENworks bundle after successful build* option to automatically publish the bundle to the folder you specified in [Step 2](#).

or

Click *Publish Now* to publish the bundle to the folder you specified in [Step 2](#).

- 6 (Conditional) If you selected the *Automatically publish applications as ZENworks bundle after successful build* option, continue with the steps for configuring the virtual application:
 - ◆ GroupWise Messenger: [Step 11 on page 13](#).
 - ◆ GroupWise and GroupWise Notify: [Step 12 on page 17](#).
 - ◆ Novell OpenOffice or LibreOffice: [Step 11 on page 23](#).

6 Streaming Virtual Applications

You can use tools that ship with Novell ZENworks Application Virtualization to stream virtual applications either from the Internet or from a shared network resource.

- ♦ [Section 6.1, “Streaming Tools Included in the Product Download,” on page 31](#)
- ♦ [Section 6.2, “Streaming Virtual Applications from the Web,” on page 32](#)
- ♦ [Section 6.3, “Streaming Virtual Applications from a Network Share,” on page 40](#)

6.1 Streaming Tools Included in the Product Download

The ZENworks Application Virtualization product is packaged for download as `ZAV--Studio.zip`, `ZAV--Streaming.zip` and `ZAV-11.1-Server.zip`.

The `ZAV--Studio.zip` file includes the following:

- ♦ **Setup.msi:** The Microsoft Windows Installer setup package for ZENworks Application Virtualization.

The `ZAV--Streaming.zip` file includes the following:

- ♦ **StreamingServer/StandaloneTemplate.zip:** The Standalone Streaming Web Server code used to host applications for streaming.
- ♦ **Tools/SpoonPlay.exe:** The SpoonPlay command line utility used to stream applications.
- ♦ **Tools/SpoonReg.exe:** A command line tool used with SpoonPlay to supply some shell integration such as desktop shortcuts, start menu shortcuts, and file associations.
- ♦ **Tools/XVm.exe:** A program called by SpoonPlay to run a streamed application. This file must be copied to the same folder where you run `SpoonPlay.exe`.
- ♦ **Tools/MSNet_x86_2.0.50727_3.svm:** If the `SpoonReg.exe` tool is to be run in an environment that doesn't have the Microsoft .NET framework already installed, this file must remain in the same folder as `SpoonReg.exe`.

The `ZAV-11.1-Server.zip` file includes the following:

- ♦ **zav-server.exe:** The ZAV Server installer.

Extract the `ZAV--Studio.zip`, the `ZAV--Streaming.zip` and the `ZAV-11.1-Server.zip` files, and save the appropriate files on the machines where you want them. For more details, see [Section 6.2, “Streaming Virtual Applications from the Web,” on page 32](#) or [Section 6.3, “Streaming Virtual Applications from a Network Share,” on page 40](#).

6.2 Streaming Virtual Applications from the Web

You can set up a Standalone Streaming server plug-in that allows users to receive applications that are created in Novell ZENworks Application Virtualization and streamed from the Web.

- ◆ [Section 6.2.1, “Preparing Applications for Streaming,” on page 32](#)
- ◆ [Section 6.2.2, “Setting Up Files on a Web Server,” on page 35](#)
- ◆ [Section 6.2.3, “Adding File Types to the Server’s MIME Type List,” on page 36](#)
- ◆ [Section 6.2.4, “Streaming License Certificates,” on page 36](#)
- ◆ [Section 6.2.5, “Adding Applications to the Server,” on page 36](#)
- ◆ [Section 6.2.6, “Testing the Streaming Server Setup,” on page 38](#)

6.2.1 Preparing Applications for Streaming

To build a model for streaming an application, you must first package and profile the application or product. This section includes the steps that make a product ready for streaming.

- ◆ [“Packaging” on page 32](#)
- ◆ [“Profiling” on page 32](#)
- ◆ [“Building a Model” on page 33](#)
- ◆ [“Juke-boxing for Streaming Virtual Applications” on page 34](#)

Packaging

You need to package the application to prepare it for profiling.

- 1 Create a virtual application by using the templates available, or take a snapshot and capture the information.
- 2 While creating the application, select *Settings > Process Configuration* and ensure that the *Compressed Payload* option is disabled.
- 3 Build the application.

Profiling

The profiling feature generates transcripts or profiles, which are then used to create a streaming model for the virtual application. Clicking a profile launches the application and creates a single transcript file based on observed user behavior during that run. You should create multiple transcripts before creating a streaming model, because multiple transcripts allow the streaming system to consider different use cases for the application. You should also create at least one transcript for each operating system that the application runs on.

NOTE: Only uncompressed virtual applications can be profiled and streamed. Compression is automatically disabled during the model build process.

- 1 Click *Advanced*, select *Profiling*, and choose the virtual application to be profiled. This application is the one created in [“Packaging” on page 32](#).

When you open the virtual application, its profiling begins.

- 2 Let the application run for a few minutes to complete profiling, then click *Close* to close the application. If profiling is not complete, wait for a minute and then select *Stop* to stop the profiling.

You can also profile the application by using the `Xstudio.exe` command with the following syntax: /
`profile [App Path] [Transcripts Folder]`

Where,

App Path - path of the application to be profiled.

TranscriptsFolder - folder in which the specified transcript files are stored.

The `Xstudio.exe` file is located in the ZENworks Application Virtualization directory where you have installed the ZENworks Application Virtualization 10.x application. The `Xstudio.exe` file depends on the `StudioDependencies.svm` file. If you want to execute the `XStudio.exe` command from any other folder, then ensure you copy both the `XStudio.exe` and `StudioDependencies.svm` files together to the new location for it to work.

Building a Model

After the necessary transcripts have been created, the streaming model is ready to be built. The model build process uses the transcripts and Connection Speed parameter to compute a model for execution. After the model build process is complete, the streaming files are written to the selected output folder. The Connection Speed setting is used to optimize delivery of application content to the end-user.

To make the product ready for streaming:

- 1 Select the desired Connection Speed. The 1.5Mbps connection speed setting is recommended in most scenarios.
- 2 Click *BuildModel* and create a model file for the virtual application.
- 3 Create a new temporary location.
- 4 For streaming the application from the Web server, move the entire directory from the Client or temporary location to the Web server under the *layers* folder. This directory contains one `model.xml` file and a number of `*.xs` files.

You can also build a model by using the `Xstudio.exe` command with the following syntax: /
`buildmodel [App Path] [Transcripts Folder] [Model Folder] [Connection Speed]`

Where,

App Path - path of the application to be modeled.

TranscriptsFolder - folder in which the transcript files are available.

Model Folder - folder in which the model files are stored or created.

Connection Speed - speed that is specified in MB/second. The default value is 1.5.

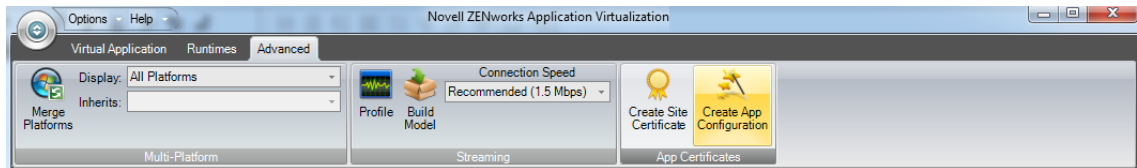
Click *Help* from within the Novell ZENworks Application Virtualization program to access more information.

Juke-boxing for Streaming Virtual Applications

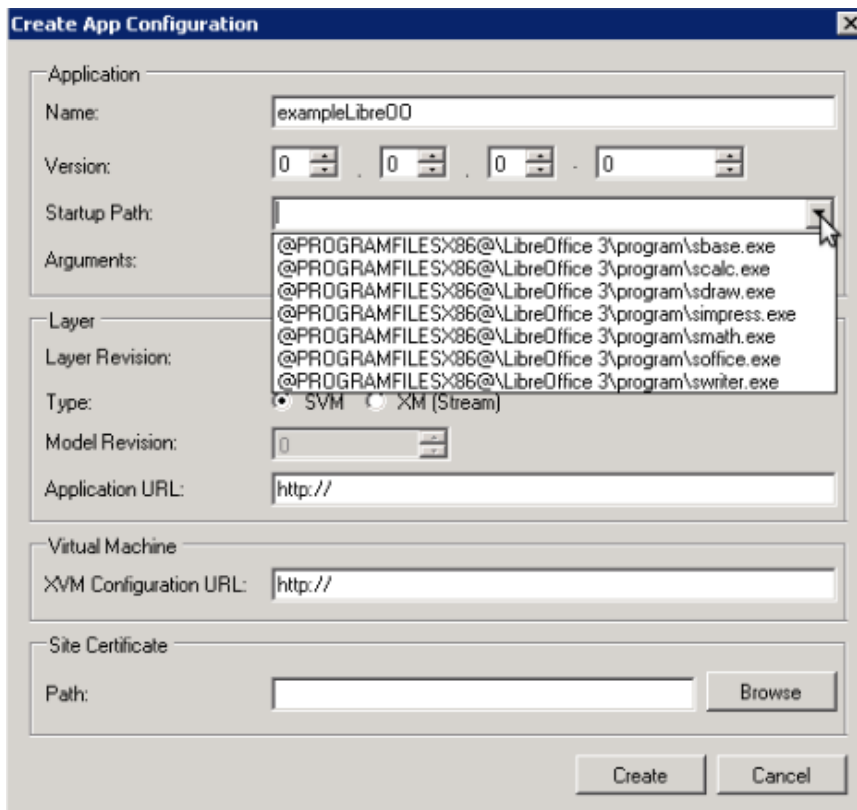
In ZENworks Application Virtualization, you can have multiple icons (ZENworks or standalone Web URLs) referring to the same streamed content with different triggers. You do this by creating multiple configuration files, each with a different startup application. After you create the configuration files, you post them on the standalone Spoon Web server with different icons and application names.

To view the list of startup applications that can be selected during configuration creation:

- 1 In the ZENworks Application Virtualization studio, click *Advanced*.
- 2 From *App Certificates*, click *Create App Configuration* to open the Create App Configuration Wizard.



- 3 From the drop-down list next to *Startup Path*, select the required startup application.



- 4 Specify the details in the fields, then click *Create*.

6.2.2 Setting Up Files on a Web Server

ZENworks Application Virtualization Streaming Server can be set up using any standard Web server. The examples in this section use Internet Information Services (IIS) Manager.

After a directory for the root folder of the server site has been configured, files can be added to the root folder. Setup files for ZENworks Application Virtualization Streaming Server are included in the `StandaloneTemplate.zip` file from Novell.

The `StandaloneTemplate.zip` file contains the following files and folders:

- ♦ The `config` folder: Contains the XVM configuration files. This folder is the eventual location of your virtual application configuration files.
- ♦ The `doc` folder: Contains documentation for setting up ZENworks Application Virtualization Streaming Server.
- ♦ The `images` folder: Contains the Novell logo, which appears in the application buffering dialog box during application launch.
- ♦ The `layers` folder: Contains the XVM and ZAV plug-in layer files and will be the eventual location of your virtual application streaming model files, and SVMs.
- ♦ The `scripts` folder: Contains the scripts for the ZENworks Application Virtualization Streaming Server Web site.
- ♦ The `launch` file: The HTML file used to run the virtual application from the server web site.
- ♦ The `plugin-check` file: The HTML file used to check whether or not the ZAV plugin has been installed.

Use the following steps to set up ZAV plug-in files on a Web server:

- 1 In the `ZAV-11.1-Streaming.zip` build location, go to `StreamingServer > StandaloneTemplate.zip` file.
- 2 Extract `StandaloneTemplate.zip` to the `root` folder for the Spoon Web site. This folder includes the `StandaloneTemplate_Novell` and `LicenseUtil_Novell.exe` files.
- 3 In the `root` folder, edit `scripts\zenworks_config.js` to specify the correct location on the Web server and the correct plug-in version. Do this by making sure that the `ZENworks_SiteRoot` variable in this file refers to the `root` folder on the Web site where the Spoon files are found.

Example 1: If the files are copied to `http://www.mysite.com/spoon/`, edit the variable as follows:

```
ZENworks_SiteRoot='/spoon/';
```

Example 2: If the files are copied to `http://www.mysite.com/products/streaming/`, edit the variable as follows:

```
ZENworks_SiteRoot='/products/streaming/';
```

- 4 In the `root` folder, update the `config\xVm.xml` file. Towards the bottom of the file update `host` to point to the correct hostname and path.

```
Layer entry="True" type="Exe">http://host/layers/xvm/9-6-2002-0__0/xvm.exe</Layer>
```

6.2.3 Adding File Types to the Server's MIME Type List

The ZAV plug-in utilizes certain special file types which must be added to the Web server's MIME type list in order to be recognized.

Add the following file extensions. The MIME type is given in parentheses.

- ♦ .svm (application/octet-stream)
- ♦ .xs (application/octet-stream)
- ♦ .xm (application/octet-stream)
- ♦ .xlayer (application/octet-stream)
- ♦ .exe (application/octet-stream)
- ♦ .xreg (application/octet-stream)

6.2.4 Streaming License Certificates

ZENworks Application Virtualization allows you to generate site license certificates to validate that the application is running in a licensed environment. Application configuration files are then generated with the site license certificate and used with the Novell standalone streaming server.

- 1 Launch the ZENworks Application Virtualization studio.
- 2 Click *Advanced*, then click the *App Config* button to regenerate the application stream configuration files.
- 3 To generate a new site license certificate, click *Advanced*.
- 4 In the *App Certificates* box, click *Request Certificate*.
- 5 Specify the following details:
 - ♦ **Organization Name:** The organization name.
 - ♦ **Unit:** The user or unit name.
 - ♦ **Allowed Portal Hosts:** The allowed hostnames of the servers from which the application will stream.
- 6 Click *Request* to request the site license certificate, then save the certificate to a desired location.
- 7 Click the *App Config* button to regenerate the application stream configuration files again.

6.2.5 Adding Applications to the Server

This section describes how to make new application configurations available on the Standalone Streaming server that requires adding the `.svm` or streaming files to the Web server and create a configuration file which references the application.

- ♦ [“Adding Streaming Files to the Web Server” on page 36](#)
- ♦ [“Creating an App Configuration File by Using ZENworks Application Virtualization” on page 37](#)
- ♦ [“Creating an App Configuration File by Using the Command Line Utility” on page 37](#)

Adding Streaming Files to the Web Server

After you use ZENworks Application Virtualization to package and profile the application you want to stream, create a folder on the Web server to host the files.

Example Path for a Streamed Application: `http://site/site_root/layers/application_name/version__revision/xstream/model_revision/`

A concrete example of a path for a streamed application might be

`http://www.mysite.com/spoon/layers/firefox/3.5.0.8__0/xstream/0/`


Example Path for a Non-Streamed Application: `http://site/site_root/layers/application_name/version__revision/`

A concrete example of a path for a non-streamed application might be

`http://www.mysite.com/spoon/layers/firefox/3.5.0.8__0/`

Creating an App Configuration File by Using ZENworks Application Virtualization

ZENworks Application Virtualization now allows you to generate site license certificates, which can then be used to generate application configurations for use with Novell's standalone streaming server.

- 1 Launch the ZENworks Application Virtualization console, then click *Advanced*.
- 2 In the *App Certificates* box, click *Request App Config*.
- 3 Enter the following details in the fields provided:
 - ♦ **Application Name:** Provide a name for the application.
 - ♦ **Application Version:** Provide a version number for the application in the following format: Major.Minor.Build.Revision format, for example, 3.8.12.895.
 - ♦ **Layer Revision:** Provide the current revision of the application build.
 - ♦ **Type:** Select either SVM or XM (streaming).
 - ♦ **Layer URL:** Include the path to the location where the application is hosted. The file will be of the `.svm` or `.xm` format, as defined by the type check box).
 - ♦ **XVm Config URL:** Path to the location of the virtual machine configuration.
 - ♦ **Certificate Path:** Path to the requested application license certificate that was saved during generation of the application license certificate. Click  to search for this location.
- 4 Click *Request* to request the application configuration.
- 5 Save the application configuration document in the `config` folder on the root of the Web server.

Creating an App Configuration File by Using the Command Line Utility

Each application delivered by using the Spoon Standalone requires a unique `.xml` configuration file. Each configuration file is linked to a private key. An application configuration file is copied to the Web server and referenced on the Web page where the application is launched. The ZAV plug-in uses the configuration file to validate the application and determine where to locate the files to stream and launch the application.

Use the `LicenseUtil-Novell.exe` command line tool (extracted from `StandaloneTemplate.zip`) to create application configuration files.

IMPORTANT: The `LicenseUtil-Novell.exe` command line tool requires Microsoft .NET Framework 3.5 for correct operation.

When you create a configuration file, the first parameter must be `CreateAppConfig`. For other command line parameters, refer to the following list:

- ◆ **/pc**: The path to the private key (`ZAV90-NOV-xxxxxxx.xml`) file on your Web server.
- ◆ **/an**: The name of the application (limited to ASCII characters).
- ◆ **/av**: Application version information
(`application_version;layer_revision;model_revision_if_applicable`).
 - ◆ **Streamed Application Example**: `1.0.0.0;0;0`
 - ◆ **Non-Streamed Application Example**: `1.0.0.0;0`
- ◆ **/au**: The URL to the model file for a streamed application or to the `.svm` file for a non-streamed application.
 - ◆ **Streamed Application Example**: `http://www.mysite.com/layers/myapp/1.0.0.0__0/xstream/0/model.xml`
 - ◆ **Non-Streamed Application Example**: `http://www.mysite.com/layers/myapp/1.0.0.0__0/myapp.svm`
- ◆ **/vm**: The version information for `XVm.exe version;revision`, such as
To locate the version number, from the extracted `StandaloneTemplate.zip` folder, go to `layers`, then select the `XVm` folder. Copy the directory name and replace it in the command line as
- ◆ **/XVm**: The URL to the `.XVm` configuration file.

NOTE: The `SpoonReg` version and revision information is assumed to be identical to the `XVm` version and revision.

- ◆ **/o**: The output file.

The following is an example of the command line syntax that was used to create a GroupWise application configuration file.

```
C:\Template>LicenseUtil_Novell.exe CreateAppConfig /pc
C:\Users\Administrator\Desktop\certificate.xml /an groupwise /av 8.0.2.0;0;0 /au
http://164.99.186.237/bh237/layers/gwmodel/model.xml /xvm http://164.99.186.237/
bh237/config/xvm.xml /vm 9.6.2002.0;0 /o groupwise.xml
```

After you generate the configuration file, save it in a convenient location on the Web server, for example, `http://site/site_root/configs/`.

6.2.6 Testing the Streaming Server Setup

Testing the ZENworks Application Virtualization Streaming Server setup involves installing the ZAV plug-in and launching an application. This section includes the following information:

- ◆ [“Testing the Plug-In Install” on page 38](#)
- ◆ [“Testing the Application Launch” on page 39](#)
- ◆ [“Troubleshooting an Application That Fails to Buffer” on page 40](#)

Testing the Plug-In Install

- 1 (Conditional) On the Windows desktop, click *Start > Control Panel > Add or Remove Programs*, select *ZENworks Application Virtualization Sandbox Manager*, then click *Remove*.

Repeat this step to remove all previous installations (versions) of the ZENworks Application Virtualization Sandbox Manager.

NOTE: Although this step is unnecessary for end-users, it helps you to ensure that the plug-in installer is correctly referenced.

- 2 Use a Web browser to navigate to `plugin-check.html`. For example,

`http://www.mysite.com/spoon/plugin-check.html`

- 3 Install the plug-in.

Testing the Application Launch

- 1 In a text editor, open `launch.html` and edit the `OnClick` function of the relevant hyperlink to point to the correct application configuration document. In the following case we are updating the first application by changing `[APPLICATION_1]` to the name of the application document created earlier, without the square brackets.

```
<a href="#" onclick="OnClick('IE8', false);return false;"></a>
```

In the `<script>` section at the top of `launch.html` you will see the following code:

```
var sConfigUrl = ZENworks_SiteRootUrl + ZENworks_SiteRoot + "config/" + sApp + ".xml" (new SpoonEntry()).RunApp(sConfigUrl, fReg);
```

The `sConfigUrl` variable is built based on what you set the hyperlink to previously. To verify this, add a new line after the `var sConfigURL` statement:

```
alert(sConfigUrl);
```

This displays the value that is being passed to the streaming server and should match the URL of the application document that you have created.

- 2 Use a Web browser to navigate to `plugin-check.html`.

The page then redirects to `launch.html`.

- 3 Click the required application or its corresponding logo on the page. A security dialog box might appear requesting to run the application. If so, allow the application to run.

The application buffers and then launches.

- ♦ The application configuration file is cached by the plug-in for up to 15 minutes. If the application configuration is changed, it is best to restart the ZAV plug-in (select *Start > All Programs > Startup > ZENworks Application Virtualization Sandbox Manager*) before retesting.
- ♦ To register the streamed applications to a local machine, modify the `OnClick` function to send the value `true` instead of `false`.

For example, to attempt launching a configuration file called `ie8.xml` in the `config` folder and then register the application to the desktop.

```
<a href="#" onclick="OnClick('ie8', true);return false;">
```

- ♦ If the application is registered by using the ZAV plug-in manager, you can access the application offline.

Troubleshooting an Application That Fails to Buffer

The DebugView tool from Microsoft generates the logging information output from the ZAV plug-in. Use the following steps to obtain, configure, and use the tool.

- 1 Download the DebugView tool from the [Microsoft Web site \(http://technet.microsoft.com/en-us/sysinternals/bb896647.aspx\)](http://technet.microsoft.com/en-us/sysinternals/bb896647.aspx).
- 2 Run the debug tool (`dbgview.exe`) to immediately start capturing the debug output.
- 3 In `HKEY_CURRENT_USER\Software\Code Systems\Spoon` of the Windows registry, create the `TraceLevel` value and add `Debug` as a new String value.
- 4 On the Windows desktop, select *Start > All Programs > Startup > ZENworks Application Virtualization Sandbox Manager* to restart the ZAV plug-in.
- 5 Navigate to `launch.html`.
- 6 Inspect the DebugView output for possible errors in the application configuration file.

6.3 Streaming Virtual Applications from a Network Share

The SpoonPlay command line tool is a utility for running streamed applications from a network share. After you package the application and create the streaming files, you can store the files on a network share or a Web server. SpoonPlay manages the launch and local cache of streamed virtual applications from a network share to a desktop.

- ♦ [Section 6.3.1, "Setting Up SpoonPlay to Stream Applications," on page 40](#)
- ♦ [Section 6.3.2, "Using the SpoonPlay Command Line," on page 40](#)
- ♦ [Section 6.3.3, "Integrating SpoonPlay with the SpoonReg Command Line Tool," on page 41](#)
- ♦ [Section 6.3.4, "Using a Network Share with ZENworks Application Virtualization," on page 42](#)

6.3.1 Setting Up SpoonPlay to Stream Applications

The SpoonPlay command line tool (`SpoonPlay.exe`) ships with `XVm.exe`. Copy this file to the same folder where you run `SpoonPlay.exe`. The `SpoonPlay.exe` file streams the application and the `XVm.exe` file runs it.

6.3.2 Using the SpoonPlay Command Line

This section describes how you can launch an application by using the command line and then cache the application on our local machine as an SVM file.

- ♦ ["Launching a Streaming Model" on page 41](#)
- ♦ ["Launching an Application from a Web Server" on page 41](#)
- ♦ ["Caching an Application" on page 41](#)

Launching a Streaming Model

Launching a streaming model requires you to use of the /model and /xvm flags. The /model flag specifies the location to the model files and the /xvm flag specifies the location of the XVM file that is used to launch the application.

For example, to launch the streaming model from a file server using the command line:

```
Spoonplay.exe /model=\\server1\apps\myapp\1-2-3-4__0\xstream\0\model.xml /  
xvm=\\server1\tools\xvm.exe.
```

Launching an Application from a Web Server

SpoonPlay can also launch a streaming model from a web server that has been configured to stream applications. SpoonPlay requires the /config flag, which specifies the location of the application configuration file that exists on the Web server.

For example, to use the command line to launch a streaming model from a Web server:

```
Spoonplay.exe /config=http://mysite.com/configs/app.xml.
```

For more information, see “Generating Site License Certificates” and “Application Configurations” in the *ZENworks Application Virtualization User Guide* (http://www.novell.com/documentation/zav90/pdfdoc/zav90_user_guide/zav90_user_guide.pdf).

Caching an Application

After launching a streaming model, SpoonPlay allows the application to be cached as an SVM file on your local machine. This eliminates the need to re-stream the model for this application during future launches. The following example shows the command line usage for caching an application after launching a streaming model:

```
Spoonplay.exe /model=\\server1\apps\myapp\1-2-3-4__0\xstream\0\model.xml /  
xvm=\\server1\tools\xvm.exe /cache=c:\apps\myapp.
```

6.3.3 Integrating SpoonPlay with the SpoonReg Command Line Tool

You can use the SpoonReg command line tool to supply shell integration such as desktop shortcuts, Start menu shortcuts, and file associations.

To use SpoonReg with SpoonPlay, use the cache option and execute SpoonReg only after caching is complete. When the application is completely cached, SpoonPlay returns an exit code of zero (0). Based on this, you can write a script to launch a streaming model and register the application when caching is complete and the application is closed.

The following example shows the use of command line options and integration of SpoonReg in a batch script:

```
SpoonPlay.exe /model=\\path\to\model\model.xml /cache=<path to SVM>\application.svm  
if "%errorlevel%" == "0" SpoonReg.exe <path to SVM>\application.svm.
```

6.3.4 Using a Network Share with ZENworks Application Virtualization

You can use a network share when you streaming virtual applications from a network.

- ♦ “Storing a Sandbox Location on a Network Share” on page 42
- ♦ “Launching a Virtual Application Whose Component Is Stored in a Network Location” on page 42
- ♦ “Streaming the Applications from a Network” on page 42

Storing a Sandbox Location on a Network Share

You can use the configuration wizard to configure a sandbox to be stored in a network location.

Use the following format for the network share: `\\IpAddress of the server\share name\sandbox foldername`.

If you use a network share to launch an application, the sandbox is created at the network location rather than on the user's home directory.

Launching a Virtual Application Whose Component Is Stored in a Network Location

If a component is stored at a network location, you can launch it with a virtual application.

For example, you can use the following syntax to specify SVMs on a network share: `virtual-app.exe /XLayerPath=\\network\share\patches*.svm`.

Streaming the Applications from a Network

If users want to use a network share for streaming the applications rather than using the Web server, they can use the following options at the command line: `Spoonplay.exe /model=\\server1\apps\myapp\1-2-3-4__0\xstream\0\model.xml/xvm=\\server1\tools\xvm.exe`.