

# FLEXnet AdminStudio 7.5 ZENworks Edition Installation Guide

---



# TABLE OF CONTENTS

<b>Introduction.....</b>	<b>3</b>
<b>System Requirements .....</b>	<b>4</b>
FLEXnet AdminStudio 7.5 Machine .....	4
Application Catalog Database Server .....	4
FLEXnet AdminStudio Enterprise Server.....	5
Software Repository Server .....	5
<b>FLEXnet AdminStudio 7.5 Components .....</b>	<b>6</b>
ZENworks Edition .....	6
Standard Edition .....	7
Professional Edition.....	7
Enterprise Edition.....	8
<b>Installation Procedure .....</b>	<b>9</b>
Installing FLEXnet AdminStudio 7.5 ZENworks Edition .....	9
Activating FLEXnet AdminStudio ZENworks Edition.....	13
Upgrading to Standard, Professional, or Enterprise Editions.....	15
<b>Macrovision Support.....</b>	<b>17</b>

# INTRODUCTION

Congratulations on choosing FLEXnet AdminStudio, the premier solution for preparing reliable, manageable applications and patches for enterprise use.

Using FLEXnet AdminStudio to standardize the way you package, test, distribute, and manage your applications ensures higher quality software deployments that save you time and lower TCO.



From large corporations managing hundreds of applications to small companies looking for a simple way to migrate software to the Windows Installer (MSI) standard, FLEXnet AdminStudio makes it easy for any organization to maintain reliable software.

- **Migrating Applications to Windows Installer**—FLEXnet AdminStudio's automated, intelligent tools make it easy to quickly convert any application to MSI and take advantage of cost-saving benefits such as self-healing, rollback, and install-on-demand.
- **Centrally Managing Resources and Packaging Projects**—Besides powerful software packaging technology, enterprises looking to standardize packaging across their organization need centralized management tools. FLEXnet AdminStudio has the enterprise-class functionality organizations need to effectively manage all the people, projects, and data involved in the packaging process.

# SYSTEM REQUIREMENTS

System requirements for the following machines are provided:

- **FLEXnet AdminStudio 7.5 Machine**
- **Application Catalog Database Server** (*Professional and Enterprise Editions*)
- **FLEXnet AdminStudio Enterprise Server** (*Enterprise Edition Only*)
- **Software Repository Server** (*Enterprise Edition Only*)

## FLEXnet AdminStudio 7.5 Machine

The recommended system configuration for a machine running FLEXnet AdminStudio 7.5 ZENworks Edition is:

Item	Description
<b>Processor</b>	500 MHz or greater
<b>RAM</b>	256 MB or greater (512 MB preferred)
<b>Hard Disk</b>	1.1 GB
<b>Display</b>	Designed for XGA at 1024 x 768 resolution or higher
<b>Operating System</b>	Windows 2000, Windows XP, or Windows Server. Predeployment Test requires Microsoft IIS 5 or later.
<b>Browser</b>	Microsoft Internet Explorer 5.5 or later
<b>Privileges</b>	Administrative privileges on the system

## Application Catalog Database Server

The recommended system configuration for a database server to store FLEXnet AdminStudio application catalogs is:

Item	Description
<b>Processor</b>	1 GHz or greater
<b>RAM</b>	512 MB or greater (1 GB preferred)
<b>Hard Disk Space</b>	80GB or greater
<b>Operating System</b>	Windows 2000 Server or Advanced Server (SP3) or Windows 2003 Server
<b>Database Software</b>	<p>FLEXnet AdminStudio 7.5 supports SQL Server, Oracle, and Microsoft Access databases:</p> <ul style="list-style-type: none"> <li>• <b>SQL Server</b> 7.5 (SP4) or 2000 (SP3a), installed with case-insensitive dictionary sort order and ISO-8859-1 character set (use <b>sp_helpsort</b> T-SQL command for more information)</li> <li>• <b>Oracle</b> 8i or later</li> </ul>

## FLEXnet AdminStudio Enterprise Server

This Web server hosts the Security Console, Report Center, and Job Manager

Item	Description
<b>Processor</b>	1 GHz or greater
<b>RAM</b>	512 MB or greater (1 GB preferred)
<b>Hard Disk Space</b>	30 GB or greater
<b>Operating System</b>	Windows 2000 Server or Advanced Server (SP3) or Windows 2003 Server
<b>IIS</b>	IIS 5.0 or IIS 6.0
<b>.NET</b>	.NET Framework 1.1 (including ASP.NET 1.1 registered with IIS)
<b>MSXML</b>	MSXML 4.0
<b>Running on a Domain Controller</b>	If running on a domain controller, you will have to implement one of the procedures described in the Microsoft Developer Network topic <a href="http://msdn.microsoft.com/library/en-us/wss/wss/_exch2k_running_asp_net_on_a_dc.asp">Running ASP.NET on a Domain Controller</a> (available at <a href="http://msdn.microsoft.com/library/en-us/wss/wss/_exch2k_running_asp_net_on_a_dc.asp">http://msdn.microsoft.com/library/en-us/wss/wss/_exch2k_running_asp_net_on_a_dc.asp</a> ).

## Software Repository Server

This machine stores the Software Repository files.

Item	Description
<b>Processor</b>	512 MHz or greater
<b>RAM</b>	512 MB or greater
<b>Hard Disk Space</b>	60 GB or greater
<b>Operating System</b>	Windows 2000 Server or Advanced Server (SP3) or Windows 2003 Server




# FLEXNET ADMINSTUDIO 7.5 COMPONENTS

FLEXnet AdminStudio 7.5 is distributed in the following Editions, each of which includes a different set of components:

- [ZENworks Edition](#)
- [Standard Edition](#)
- [Professional Edition](#)
- [Enterprise Edition](#)







## ZENworks Edition

The following components are included with FLEXnet AdminStudio 7.5 **ZENworks Edition**:

Icon	Description
	<b>Repackager</b> Repackage and convert Novell ZENworks projects (.axt/.aot) and other legacy setups into Windows Installer packages. Full Repackager functionality is provided, including the SmartScan Wizard and the Setup Intent Wizard.
	<b>Tuner</b> Customize Windows Installer packages by creating transforms to change features, add files, or make other modifications.
	<b>Distribution Wizard</b> (Customized) Use a customized version of Distribution Wizard to get your packages ready for distribution through ZENworks.

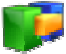




## Standard Edition

The following components are included with FLEXnet AdminStudio 7.5 **Standard Edition**:

Icon	Description
	<b>Repackager</b> Repackage and convert legacy setups into Windows Installer packages. You can also use InstallScript Scan to convert an InstallScript MSI installation to a Basic MSI package with InstallScript support.
	<b>Tuner</b> Build Windows Installer transforms for changing features, adding files, or making other modifications.
	<b>Distribution Wizard</b> Prepare applications and patches for deployment using virtually any distribution system.
	<b>InstallShield Editor 11.5</b> Customize Windows Installer packages directly, or author new packages.
	<b>Application Isolation Wizard</b> Reduce versioning conflicts by modifying an application so it always loads the versions of components—such as DLLs—with which it was originally developed and tested.
	<b>Process Workflow Management</b> Use the process-oriented interface on the Projects tab to help you and your team step through a list of tasks required to complete a procedure, and to help you visually track your progress. Projects are based upon existing Workflow Templates.






## Professional Edition

FLEXnet AdminStudio 7.5 **Professional Edition** includes all of the **Standard Edition** components plus the following additional components:

Icon	Description
	<b>ConflictSolver</b> Identify and eliminate software conflicts before deployment.
	<b>Application Manager</b> Import applications into the Application Catalog and organize those applications.
	<b>OS Snapshot</b> Use to capture your basic operating system configuration. You can then import this snapshot into the Application Catalog database so that you can use ConflictSolver to identify potential conflicts between Windows Installer packages and your operating system.
	<b>Quality Monitor</b> Test a Windows Installer-based application in the targeted deployment environment to ensure the application works as expected.
	<b>Predeployment Test</b> Determine if a Windows Installer package will succeed or fail when it is installed in production.

## Enterprise Edition

FLEXnet AdminStudio 7.5 **Enterprise Edition** includes all of the **Professional Edition** components plus the following additional components:

Icon	Description
	<b>Patch Impact Manager</b> Review Windows OS and Microsoft application patches and test the impact they will have on your environment before they are deployed.
	<b>Job Manager</b> Use to automate time consuming application migration tasks, saving you time and enabling you to enforce standardized business practices on the packaging process.
	<b>Report Center</b> Report on or view all of the information regarding the applications in your Application Catalog from a single location.
	<b>Software Repository</b> Store multiple versions of a package in the Software Repository. Also, when you perform an ad-hoc import of transform and patch files into the Application Catalog, Application Manager will determine which software package in the Application Catalog the transform or patch file is associated with.
	<b>Security Console</b> Define the roles and privileges that users and groups will have on a given Application Catalog.



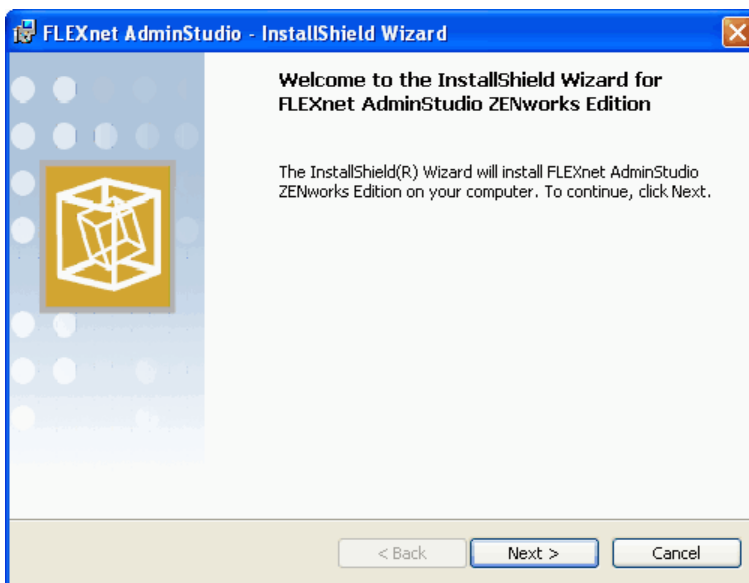
# INSTALLATION PROCEDURE

## Installing FLEXnet AdminStudio 7.5 ZENworks Edition

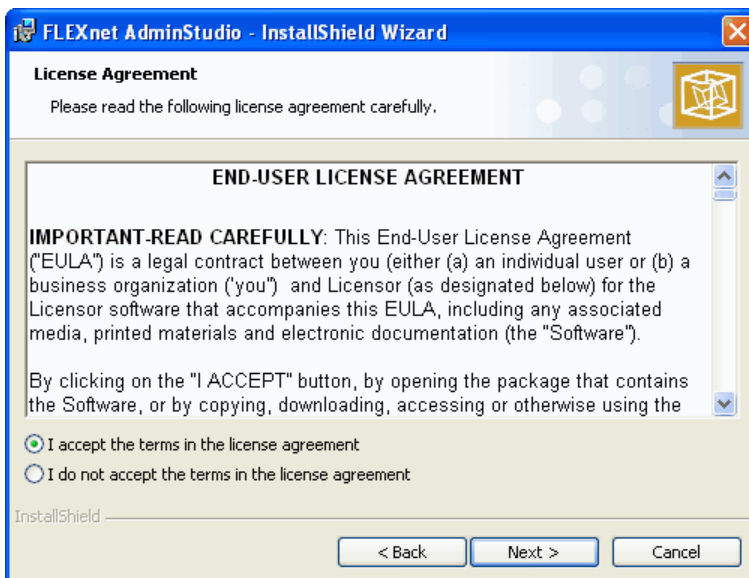
Launch the FLEXnet AdminStudio installation and the InstallShield Wizard will guide you through the installation process. All components of this edition will be installed.

### To install FLEXnet AdminStudio 7.5 ZENworks Edition

1. Launch the installation program for FLEXnet AdminStudio 7.5 ZENworks Edition. The **Welcome** panel opens.

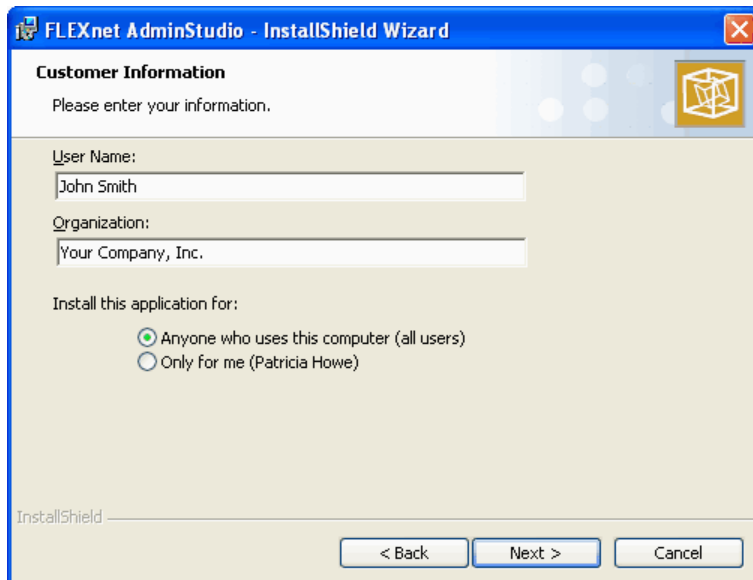


2. Click **Next**. The **License Agreement** panel opens.



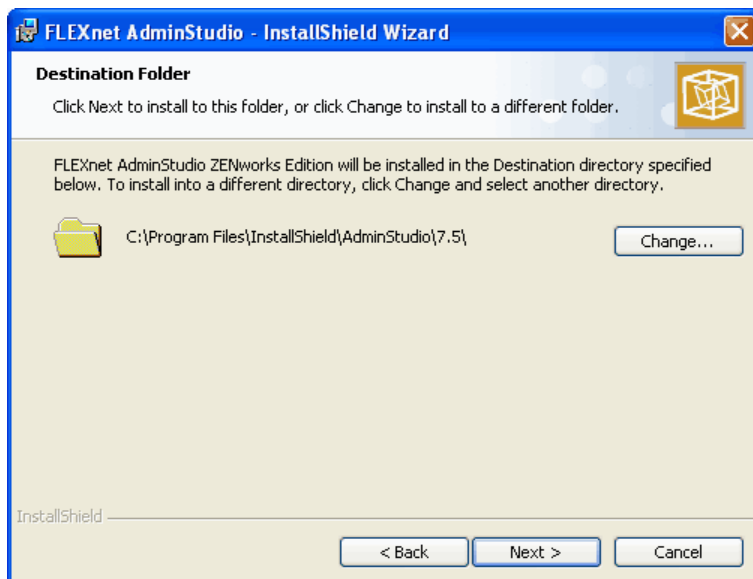
## Installation Procedure

3. Select **I accept the terms in the license agreement** and click **Next**. The **Customer Information** panel opens.



The screenshot shows the 'Customer Information' panel of the 'FLEXnet AdminStudio - InstallShield Wizard'. The title bar includes the application name and a close button. The panel has a header with the title and a sub-header 'Please enter your information.' followed by a cube icon. Below this are three input fields: 'User Name:' with 'John Smith', 'Organization:' with 'Your Company, Inc.', and 'Install this application for:' with two radio button options: 'Anyone who uses this computer (all users)' (selected) and 'Only for me (Patricia Howe)'. At the bottom, there is a status bar with 'InstallShield' and three buttons: '< Back', 'Next >', and 'Cancel'.

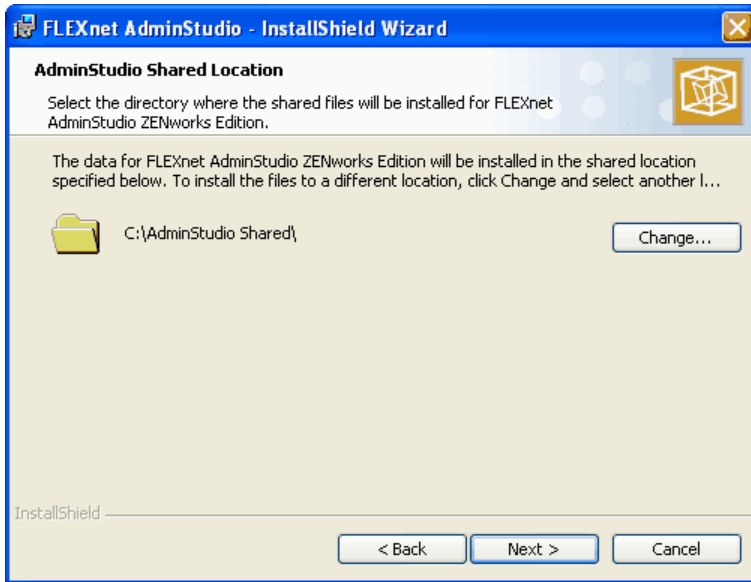
4. Enter your **User Name** and **Organization**.
5. Select an option under **Install this application for** to specify that you want this application to be either available for anyone who uses this computer or available only when you are logged on to this computer.
6. Click **Next**. The **Destination Folder** panel opens.



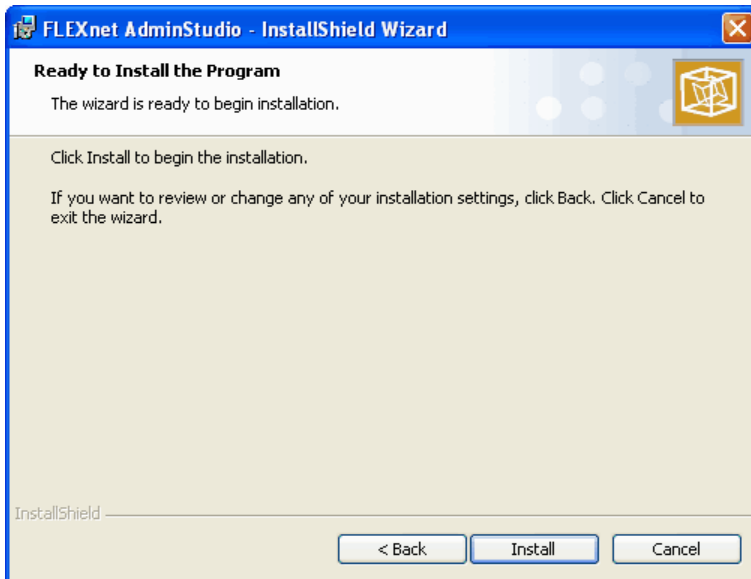
The screenshot shows the 'Destination Folder' panel of the 'FLEXnet AdminStudio - InstallShield Wizard'. The title bar includes the application name and a close button. The panel has a header with the title and a sub-header 'Click Next to install to this folder, or click Change to install to a different folder.' followed by a cube icon. Below this is a text block stating: 'FLEXnet AdminStudio ZENworks Edition will be installed in the Destination directory specified below. To install into a different directory, click Change and select another directory.' This is followed by a folder icon and the path 'C:\Program Files\InstallShield\AdminStudio\7.5\'. To the right of the path is a 'Change...' button. At the bottom, there is a status bar with 'InstallShield' and three buttons: '< Back', 'Next >', and 'Cancel'.

## Installation Procedure

7. If you want to install FLEXnet AdminStudio to the specified directory, click **Next**. If you want to select a different directory, click **Change**, select a new directory, and then click **Next**. The **AdminStudio Shared Location** panel opens.

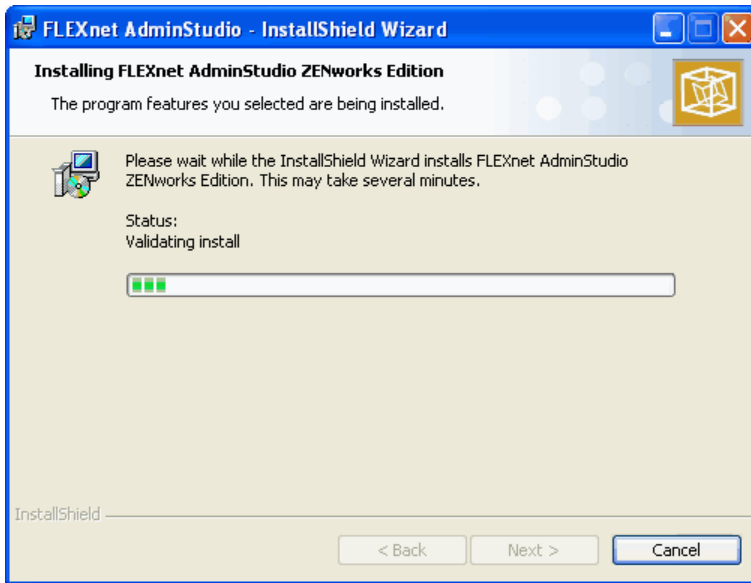


8. By default, the installation will install the FLEXnet AdminStudio shared files to the **AdminStudio Shared** directory. If you want to change this directory, click **Change**. When the desired directory is selected, click **Next**. The **Ready to Install the Program** panel opens.

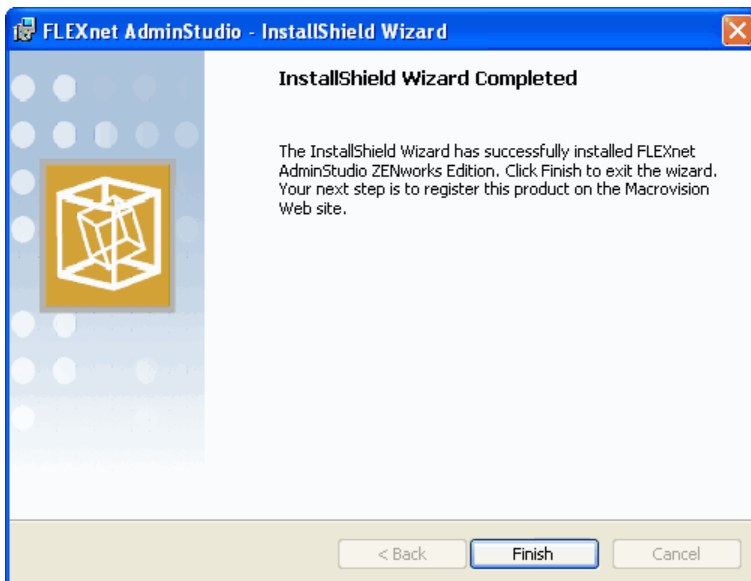


9. Click **Install** to begin the installation. The **Installing FLEXnet AdminStudio ZENworks Edition** panel opens, displaying the progress of the installation.

## Installation Procedure



When installation is complete, the **InstallShield Wizard Complete** panel opens:



10. Click **Finish**. The Macrovision Registration Page opens, where you are prompted to register your copy of FLEXnet AdminStudio 7.5 ZENworks Edition.
11. Follow the instructions to register your copy of FLEXnet AdminStudio 7.5 ZENworks Edition. After you have registered, a serial number will be displayed. This serial number will also be sent to you via email.
12. Continue with the steps in [Activating FLEXnet AdminStudio ZENworks Edition](#) on page 13.

## Activating FLEXnet AdminStudio ZENworks Edition

When you open FLEXnet AdminStudio 7.5 ZENworks Edition the first time, you will be prompted to enter serial number to activate the product.

### To activate FLEXnet AdminStudio 7.5 ZENworks Edition:

1. Launch FLEXnet AdminStudio 7.5 ZENworks Edition. The **Welcome to FLEXnet AdminStudio 7.5 ZENworks Edition** dialog box opens.

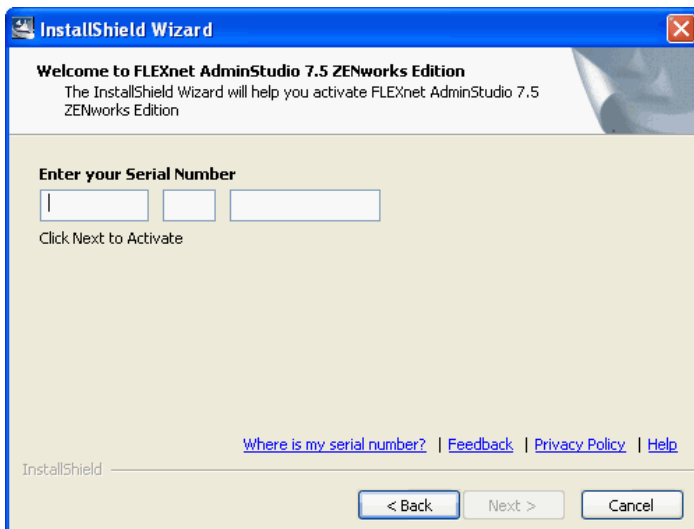


---

**Note:** If you have not yet registered your copy of FLEXnet AdminStudio 7.5 ZENworks Edition, click the **Register online** link to open the [Macrovision Registration Web site](#). After you have registered, a serial number will be displayed.

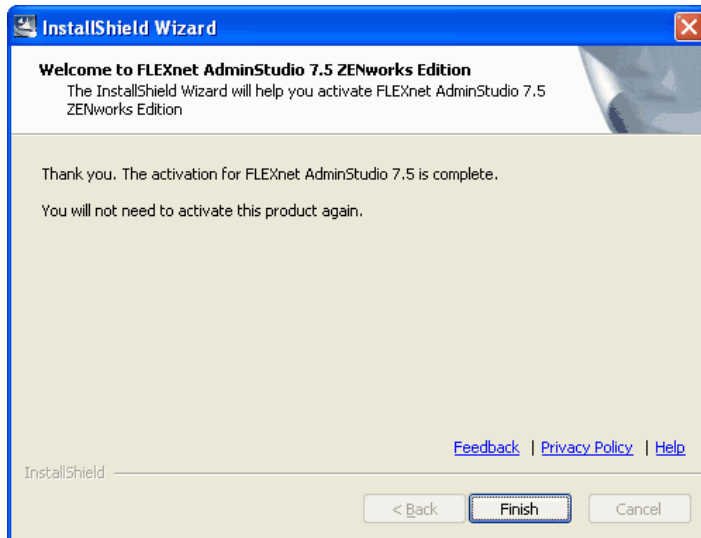
---

2. On the **Welcome to FLEXnet AdminStudio 7.5 ZENworks Edition** panel, select the **I have a serial number ...** option and click **Next**. A panel opens prompting you to enter your serial number:



## Installation Procedure

3. Enter the serial number that you obtained from the Registration process and click **Next**. FLEXnet AdminStudio contacts the Activation Server to activate this application. When activation is complete, a message appears stating that activation is complete.



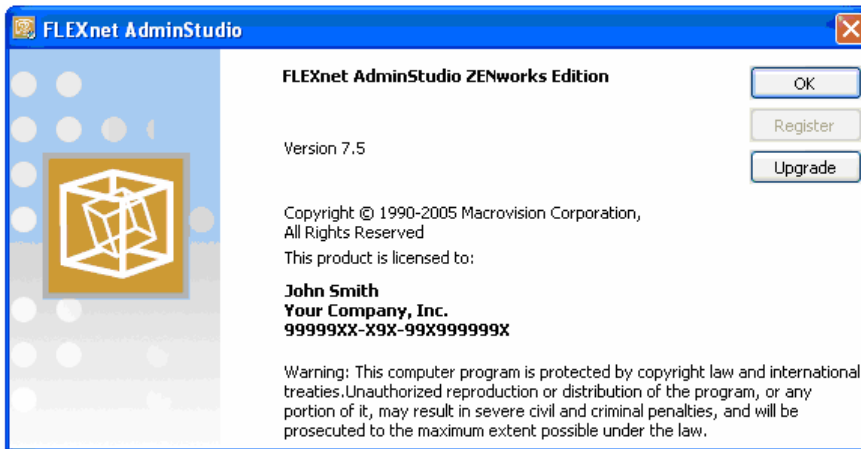
4. Click **Finish**. FLEXnet AdminStudio 7.5 ZENworks Edition is now ready for use.

## Upgrading to Standard, Professional, or Enterprise Editions

If you want to upgrade from FLEXnet AdminStudio 7.5 ZENworks Edition to a higher Edition, you can use an upgrade feature that is built-in to FLEXnet AdminStudio that allows you to activate features in a higher Edition without re-installing the application. To upgrade, perform the following steps:

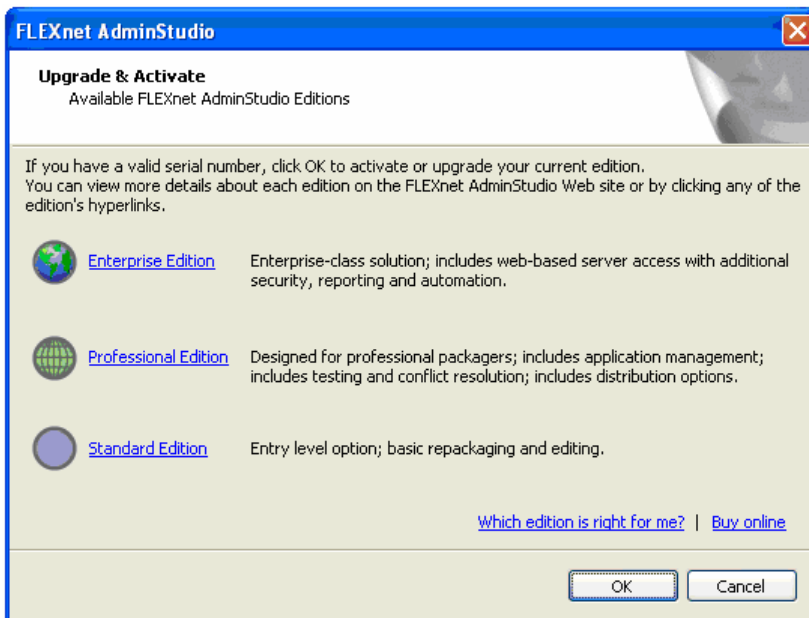
### To upgrade your FLEXnet AdminStudio Edition:

1. Contact Macrovision and purchase a serial number for the Edition that you want to upgrade to. You can either contact your Macrovision Sales Representative to purchase the upgrade or purchase it online at the [Macrovision Online Store](http://www.macrovision.com/purchase/index.shtml) at: <http://www.macrovision.com/purchase/index.shtml>
2. Launch FLEXnet AdminStudio.
3. On the **Help** menu, click **About FLEXnet AdminStudio**. The **About FLEXnet AdminStudio** dialog box opens.

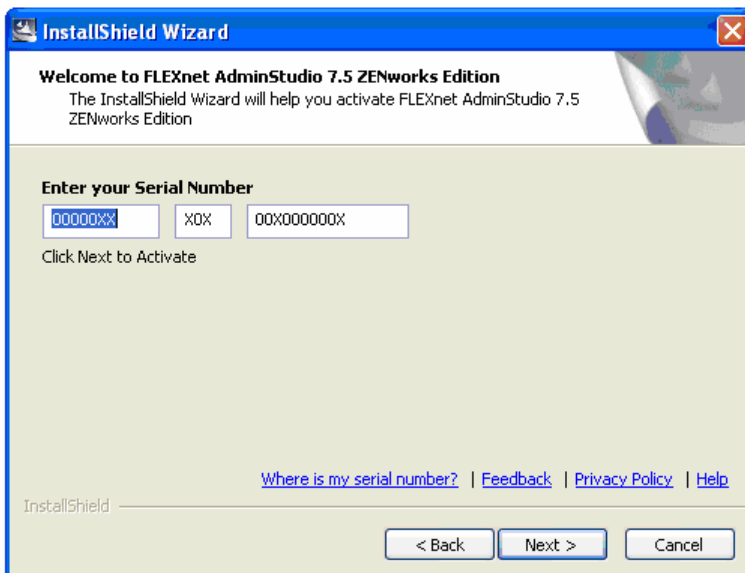


## Installation Procedure

- Click the **Upgrade** button. The **Upgrade and Activate** dialog box opens.



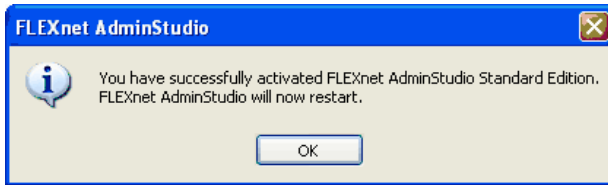
- Click **OK** to upgrade your Edition. The **Welcome to FLEXnet AdminStudio 7.5 ZENworks Edition** dialog box opens and lists your current ZENworks Edition serial number.



- Replace the existing serial number with the serial number of the Edition you purchased and click **Next**. After a few seconds, you receive a message that activation is complete.



- Click **Finish**. A message appears stating that the upgrade was successful and that FLEXnet AdminStudio will now restart.



- Click **OK**. FLEXnet AdminStudio restarts, and the functionality of the upgraded Edition is now available to you.

## MACROVISION SUPPORT

For additional information on the AdminStudio ZENworks Edition and your upgrade options, visit the AdminStudio Web site at [http://www.macrovision.com/products/flexnet\\_adminstudio/adminstudio/editions/zenworks.shtml](http://www.macrovision.com/products/flexnet_adminstudio/adminstudio/editions/zenworks.shtml).

Comprehensive support for your Macrovision product is available at our **Support** site, <http://www.macrovision.com/support/index.shtml>, where you can <http://esupportus.macrovision.com/>, search our extensive Knowledge Base, visit our [user communities](#), or take advantage of the many other support resources available to you.

You can purchase a support plan either online at <http://shop.installshield.com/home/default.asp> or by contacting one of our product consultants at 1-847-466-6000 (or toll free in the U.S. at 1-800-809-5659).



Macrovision Corporation  
2830 De La Cruz Boulevard, Santa Clara, CA 95050  
US +1 888-755-0861 Int'l +44 (0)870-873-6300  
[www.macrovision.com](http://www.macrovision.com)

Copyright © 2005 Macrovision Corporation and/or Macrovision Europe Ltd. All Rights Reserved. Macrovision and PRODUCT\_NAME(S) are registered trademarks or trademarks of Macrovision Corporation in the United States of America and/or other countries. All other brand and product names mentioned herein are the trademarks and registered trademarks of their respective owners.