

---

# About AdminStudio 10.0 ZENworks Edition

AdminStudio provides a ZENworks Edition for both ZENworks 10 and 11 users and ZENworks 7 users. Information about the ZENworks Edition is presented in the following sections:

- [ZENworks Edition for ZENworks 10 and 11 Users](#)
- [ZENworks Edition for ZENworks 7 Users](#)
- [ZENworks Server Connection Requirement](#)
- [Edition-Specific Notes](#)

## ZENworks Edition for ZENworks 10 and 11 Users

The AdminStudio 10.0 ZENworks Edition for Novell ZENworks Configuration Manager (ZCM) 10 and 11 customers includes all of the features of AdminStudio Standard Edition, the basic version of the AdminStudio solution. AdminStudio Standard Edition provides a cost-effective way for software packagers to migrate applications to Windows Installer. It enables control over MSI packaging, customization, and distribution activities, helping organizations rapidly and reliably package and deploy applications.



# ZENworks Edition for ZENworks 7 Users

AdminStudio 10.0 ZENworks Edition for ZENworks 7 users is a customized version of AdminStudio that allows system administrators to rapidly prepare reliable Windows Installer (.msi) software packages for distribution across their enterprises. AdminStudio enables companies to take full advantage of the benefits of Windows Installer and reduces total cost of ownership by simplifying the installation, customization, and management of applications.

- [ZENworks Edition for ZENworks 7 Users Components](#)
- [ZENworks Edition for ZENworks 7 Users Customizations](#)

## ZENworks Edition for ZENworks 7 Users Components

AdminStudio 10.0 ZENworks Edition for ZENworks 7 users includes the following AdminStudio tools:

Tool	Description
<b>Repackager</b>	<p>Use to repackage and convert Novell ZENworks projects (.axt/.aot) into Windows Installer packages. Full Repackager functionality is provided, except for InstallScript MSI Conversion.</p>  <hr/> <p><b>Note</b> • For more information, see <a href="#">Repackager Customizations</a>.</p>
<b>Distribution Wizard</b>	<p>Prepare a Windows Installer package for distribution on a ZENworks Configuration Management Server, via ZENworks desktop application distribution, or via ZENworks server distribution.</p>  <hr/> <p><b>Note</b> • For more information, see <a href="#">Distribution Wizard Customizations</a>.</p>
<b>Tuner</b>	<p>Use to quickly create transforms (.mst), including Response File transforms, to customize software already in the Windows Installer format and automatically validate that any changes conform to Microsoft guidelines.</p>

# ZENworks Edition for ZENworks 7 Users Customizations

Additional information about the components available in AdminStudio 10.0 ZENworks Edition for ZENworks 7 Users is presented in the following sections:

- [Repackager Customizations](#)
- [Distribution Wizard Customizations](#)
- [Application Catalogs](#)
- [Projects and Process Templates](#)

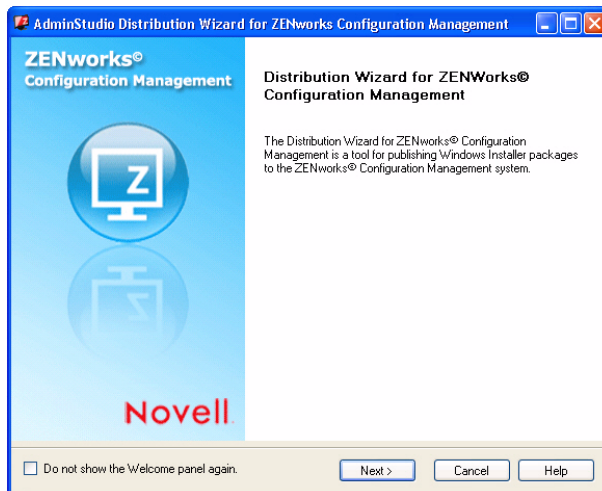
## Repackager Customizations

Repackager is customized to open Repackager projects (\*.irp), legacy Repackager files (\*.inc), and Novell ZENworks files (\*.axt and \*.aot).

Also, Repackager in the AdminStudio ZENworks Edition supports the file and registry delete operations that are specific to ZENworks and the .axt conversion process. As a result, within the Repackager interface there may be two additional views displayed which allow you to modify the registry delete or file delete operations.

## Distribution Wizard Customizations

AdminStudio 10.0 ZENworks Edition includes a standalone AdminStudio Distribution Wizard for ZENworks Configuration Management, which you can use to prepare a Windows Installer package (.msi)—including any associated transforms—for distribution on a ZENworks Configuration Management Server.



**Figure -1:** AdminStudio Distribution Wizard for ZENworks Configuration Management Welcome Panel

Also, using the standard Distribution Wizard, you can distribute a package via ZENworks desktop application distribution, via ZENworks server distribution, as an administrative install, to an FTP location, or to a Network location.

## Application Catalogs

ZENworks Edition users do not need access to AdminStudio Application Catalog databases. Therefore, in AdminStudio ZENworks Edition, you cannot connect to an Application Catalog or create a new Application Catalog.

## Projects and Process Templates

Since the **Process Assistants** tab (formerly the **Projects** tab) and **Process Template Editor** (formerly the **Workflow Templates** tab) in the AdminStudio interface are used primarily to manage application migration projects, they are disabled in the ZENworks Edition.

## ZENworks Server Connection Requirement

The first time you launch an AdminStudio ZENworks Edition tool, you will be prompted to log in to a ZENworks eDirectory server or a ZENworks Configuration Management server. After a successful login, you will not be prompted to login again.

## Edition-Specific Notes

Because the AdminStudio Help Library contains topics on all of AdminStudio's tools, topics that are not available in the ZENworks Edition include one of the following notes:



---

**Edition** • This feature is included with AdminStudio Standard, Professional, and Enterprise Editions.



---

**Edition** • This feature is included with AdminStudio Professional and Enterprise Editions.



---

**Edition** • This feature is included with AdminStudio Enterprise Edition