

Novell Data Synchronizer 1.2 Connector for Mobility

July 29, 2011

Novell®

Quick Start

Your GroupWise administrator has set up Novell Data Synchronizer to synchronize GroupWise data with mobile devices. This Quick Start helps you understand what to expect when GroupWise data is synchronized with your mobile device.

Supported Mobile Devices

The Data Synchronizer Mobility Connector supports many popular device operating systems, including Android, Apple, Maemo, Palm, Symbian, and Windows Mobile. For device-specific information, see the [Novell Data Synchronizer Mobility Connector Wiki \(http://wiki.novell.com/index.php/Data_Synchronizer_Mobility_Connector\)](http://wiki.novell.com/index.php/Data_Synchronizer_Mobility_Connector).

Mobile Device Configuration

After your GroupWise administrator has set up the Data Synchronizer system, you must configure your mobile device to communicate with it. Typically, you need to know the following information to configure your mobile device:

- ◆ Network login username (This might or might not be the same as your GroupWise user ID. Your mobile device must use your network login name in order to access the Data Synchronizer system.)
- ◆ Mailbox password (If your GroupWise mailbox password is different from your network login password, you might use your network login password or your GroupWise mailbox password, depending on how your GroupWise administrator has configured your system.)
- ◆ E-mail account type (Use Exchange as the account type even though you are connecting to GroupWise.)
- ◆ Domain (Data Synchronizer does not use the Exchange domain information, so it does not matter what you put.)
- ◆ Data Synchronizer server IP address or DNS hostname (If your Data Synchronizer system uses a non-standard port number, you can add it after the IP address or DNS hostname.)
- ◆ Certificate for a secure connection

If you have questions about configuring your mobile device, contact your GroupWise administrator.

Initial Synchronization

As soon as your mobile device connects with the Data Synchronizer system, initial synchronization begins.

Contacts	By default, all of your personal address books in GroupWise, except your Frequent Contacts address book, are synchronized to your mobile device to provide phone numbers for convenient calling.
----------	--

NOTE: Even though the GroupWise Address Book is not synchronized to your mobile device, you can still access individual contacts in the GroupWise Address Book, if your mobile device can do a Global Address List (GAL) lookup. As an alternative, you can create a personal address book that is a subset of the GroupWise Address Book to synchronize to your mobile device.

Calendar Items	By default, two weeks of past calendar items and all future calendar items are automatically synchronized to your mobile device. On some mobile devices, you can change your calendar settings to request additional past calendar items.
----------------	---

E-Mail Messages	By default, three days of past e-mail messages are synchronized from your GroupWise Mailbox folder to the In Box folder on your mobile device. If you want to synchronize more existing e-mail messages to your mobile device, change the e-mail settings on your mobile device. GroupWise items in Cabinet folders synchronize later, when you open each folder on your mobile device.
-----------------	---

Folders	By default, folders in the GroupWise Cabinet folder, as well as other standard GroupWise folders such as Sent Items, Work in Progress, Junk Mail, and Trash, synchronize to your mobile device. However, the contents of these folders do not synchronize until you open each folder.
---------	---

NOTE: The following folders are not synchronized: Tasklist, Documents, POP or IMAP accounts, NNTP Newsgroup accounts, RSS feeds, query folders, and Internet calendar subscription folders.

Attachments Attachments synchronize to your mobile device along with items, if they do not exceed the attachment size limit. If an item has an attachment that does not synchronize, a message notifies you.

Synchronization Configuration

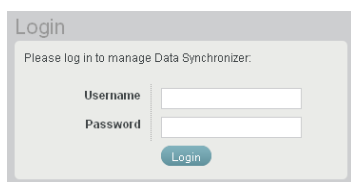
After initial synchronization, you can retrieve additional past items by reconfiguring your mobile device. Refer to Help on your mobile device to learn how to change these synchronization settings.

In addition, you can customize some settings in your Data Synchronizer user account.

- 1 In a Web browser, view the following URL:

`https://data_synchronizer_server:8120`

You are prompted to log in.



Login

Please log in to manage Data Synchronizer.

Username

Password

Login

- 2 Log in to your Data Synchronizer user account.

- 2a In the *Username* field, specify the username that you use to log in to your network.

This might or might not be the same as your GroupWise user ID.

- 2b In the *Password* field, specify the password that you use to log in to your network.

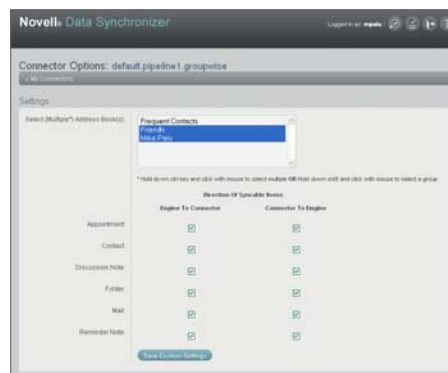
This might or might not be the same as your GroupWise mailbox password.

- 2c Click *Login* to display the Data Synchronizer User Options page.



- 3 Adjust your GroupWise Connector synchronization settings to change which personal address books are synchronized to your mobile device:

- 3a Click  on the GroupWise Connector line.



By default, all GroupWise personal address books are synchronized to your mobile device, except the Frequent Contacts address book.

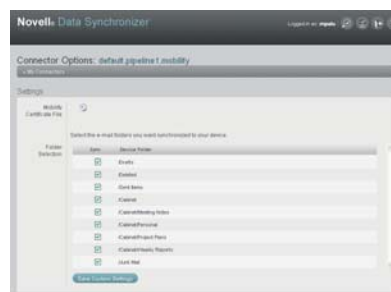
- 3b (Conditional) If you do not want to synchronize a personal address book to your mobile device, Ctrl+click it to remove it from the list of address books that are selected for synchronization.

NOTE: Although it is possible on the GroupWise Connector Options page to limit the item types that are synchronized between GroupWise and your mobile device, changing the default settings is not recommended.

- 3c Click *Save Custom Settings*, then click *My Connectors* to return to the Data Synchronizer User Options page.

- 4 Adjust your Mobility Connector synchronization settings to change which folders are synchronized to your mobile device:


- 4a Click  on the Mobility Connector line.



By default, all GroupWise folders are synchronized to your mobile device, although the contents of the folders are not synchronized until you open each folder on your mobile device.

- 4b (Optional) Deselect any folders that you do not want to synchronize to your mobile device.

- 4c Click *Save Custom Settings*.

- 5 Click  to log out of your Data Synchronizer user account.

Ongoing Synchronization

After initial synchronization is complete and your mobile device contains all desired data from your GroupWise mailbox, synchronization of items and actions continues, regardless of whether you are working in your GroupWise mailbox or on your mobile device.

Items	Actions That Synchronize
Contacts	<ul style="list-style-type: none">◆ Add new contacts◆ Delete contacts◆ Modify contact information, including all contact fields and photos
Calendar Items	<ul style="list-style-type: none">◆ Send/receive appointments◆ Accept/decline appointments◆ Modify appointments◆ Post reminder notes
E-Mail Messages	<ul style="list-style-type: none">◆ Send/receive messages◆ Forward/reply to messages◆ Mark messages read/unread◆ Delete messages
Folders	<ul style="list-style-type: none">◆ Add/delete folders◆ Select/deselect folders for synchronization
Attachments	<ul style="list-style-type: none">◆ Forward full attachments even when the attachment size limit has been exceeded (on mobile devices that support Smart Forward functionality)

You might notice that a few items do not synchronize as you might expect. For a list, see “Item Synchronization Issues” in the [Mobility Connector Readme \(http://www.novell.com/documentation/datasync_connectors1\)](http://www.novell.com/documentation/datasync_connectors1).

For device-specific information about ongoing synchronization capabilities, see the [Novell Data Synchronizer Mobility Connector Wiki \(http://wiki.novell.com/index.php/Data_Synchronizer_Mobility_Connector\)](http://wiki.novell.com/index.php/Data_Synchronizer_Mobility_Connector).

More Help

- ◆ [Data Synchronizer Support Forum \(http://forums.novell.com/forumdisplay.php?f=939\)](http://forums.novell.com/forumdisplay.php?f=939)
- ◆ [Data Synchronization Cool Solutions \(http://www.novell.com/communities/cool solutions/datasynchronizer\)](http://www.novell.com/communities/cool solutions/datasynchronizer)
- ◆ [Data Synchronizer Mobility Connector Devices Wiki \(http://wiki.novell.com/index.php/Data_Synchronizer_Mobility_Connector_Devices\)](http://wiki.novell.com/index.php/Data_Synchronizer_Mobility_Connector_Devices)

Legal Notices: Copyright © 2010-2011 Novell, Inc. All rights reserved. No part of this publication may be reproduced, photocopied, stored on a retrieval system, or transmitted without the express written consent of the publisher. For Novell trademarks, see the [Novell Trademark and Service Mark list \(http://www.novell.com/company/legal/trademarks/tmlist.html\)](http://www.novell.com/company/legal/trademarks/tmlist.html). All third-party trademarks are the property of their respective owners.

