



AdminStudio 11.0

Client Tools Installation Guide

Legal Information

Book Name: AdminStudio 11.0 Client Tools Installation Guide
Part Number: ADS-1100-IG01
Product Release Date: January 26, 2012
Document Revised: February 21, 2012

Copyright Notice

Copyright © 2012 Flexera Software LLC. All Rights Reserved.

This product contains proprietary and confidential technology, information and creative works owned by Flexera Software LLC and its licensors, if any. Any use, copying, publication, distribution, display, modification, or transmission of such technology in whole or in part in any form or by any means without the prior express written permission of Flexera Software LLC is strictly prohibited. Except where expressly provided by Flexera Software LLC in writing, possession of this technology shall not be construed to confer any license or rights under any Flexera Software LLC intellectual property rights, whether by estoppel, implication, or otherwise.

All copies of the technology and related information, if allowed by Flexera Software LLC, must display this notice of copyright and ownership in full.

Trademarks

Flexera Software, AdminStudio, FlexEnabled, FlexLM, FlexNet, FlexNet Connect, FlexNet Manager, FlexNet Publisher, InstallAnywhere, InstallShield, InstallShield Professional, and PackageExpert are registered trademarks or trademarks of Flexera Software LLC in the United States of America and/or other countries. All other brand and product names mentioned herein are the trademarks and registered trademarks of their respective owners.

Restricted Rights Legend

The Software is commercial computer software. If the user or licensee of the Software is an agency, department, or other entity of the United States Government, the use, duplication, reproduction, release, modification, disclosure, or transfer of the Software, or any related documentation of any kind, including technical data and manuals, is restricted by a license agreement or by the terms of this Agreement in accordance with Federal Acquisition Regulation 12.212 for civilian purposes and Defense Federal Acquisition Regulation Supplement 227.7202 for military purposes. The Software was developed fully at private expense. All other use is prohibited.

Contents

- 1 AdminStudio 11.0 Client Tools Installation Guide 7**
 - AdminStudio Editions9**
 - AdminStudio Full Editions9
 - AdminStudio Limited Editions15
 - AdminStudio 11.0 ZENworks Limited Editions.15
 - AdminStudio 11.0 Limited Edition for LANDesk Management Suite18
 - AdminStudio 11.0 Microsoft Configuration Manager Edition.20
 - Contacting Us.....22**
- 2 AdminStudio 11.0 System Requirements 23**
 - AdminStudio Architecture Diagram24**
 - Hardware and Software Requirements26**
 - AdminStudio Client Tool Machine26
 - Application Catalog / Compatibility Solver Database Server.....27
 - AdminStudio Enterprise Server / Workflow Manager Server.....27
 - Software Repository Server28
 - Limited Edition Requirements29
 - Virtual Machines30
 - Installing Internet Information Services (IIS)33**

3	Installing AdminStudio 11.0 Client Tools (Full Editions).....	35
	AdminStudio Client Tools, By Edition	36
	Installing the AdminStudio Client Tools.....	38
	Installing Configuration Manager Web Console and Predeployment Test Web Components	41
	Installing Web Tools Separately from the Client Tools	41
	Configuring Configuration Manager Web Console and Predeployment Test Results Web Site	43
	Open Port 80 in the Windows Firewall Settings	43
	Verification of the Installed Components	43
	Upgrading an Existing Application Catalog to AdminStudio 11.x	46
4	Installing AdminStudio 11.0 Limited Editions	51
	Installing AdminStudio 11.0 ZENworks Edition.....	52
	Installing AdminStudio 11.0 Configuration Manager Edition.....	55
	Installing AdminStudio 11.0 Limited Edition for LANDesk Management Suite	60
5	Configuring Compatibility Solver	65
	Creating a Compatibility Solver Database.....	66
	Downloading and Importing Reports (Plug-ins)	70
	Importing and Loading Packages.....	73
	Running Reports	74
6	Activating AdminStudio	77
	About Activation.....	78
	About Serial Numbers	78
	About Registration	79
	Activating AdminStudio (Full Edition) Upon Initial Startup	79
	Activating AdminStudio Purchased from Flexera Software	79
	Activating AdminStudio Purchased from a Reseller	80
	Activating AdminStudio ZENworks Edition	82
	Registering and Activating AdminStudio Limited Edition for LANDesk Management Suite	85
	Activating AdminStudio Configuration Manager Edition	88
	Activation Troubleshooting	90
	General Troubleshooting	90
	Activating Through Email	91
	Activating Products Silently	92
	Reactivating AdminStudio on a Different Computer	92
7	Upgrading Your Product Edition	95

8 Evaluating AdminStudio	97
Evaluating AdminStudio Enterprise Edition Client Tools	98
Evaluating AdminStudio's Microsoft App-V Support	99
Evaluating the Automated Application Converter "Multiple Application" Option	99
Evaluating Compatibility Solver	100
Evaluating the Client Tools in the Limited Edition for LANDesk Management Suite	100
Evaluating the AdminStudio Enterprise Server Web Tools	102
Activating AdminStudio After Evaluation Period	103
Index	105

AdminStudio 11.0 Client Tools Installation Guide

Information about installing the AdminStudio client tools is presented in the following sections:

Table 1-1 • Installing AdminStudio 11.0 Client Tools

Topic	Content
AdminStudio Editions	Describes the tools and functionality available in all of AdminStudio's Full Editions, Limited Editions, and Add-On Packs.
AdminStudio 11.0 System Requirements	Lists the hardware and software requirements for the components of the AdminStudio client tools. Also includes an AdminStudio architecture diagram.
Installing AdminStudio 11.0 Client Tools (Full Editions)	<p>Describes the AdminStudio client tools, explains how to install the client tools and their Web-based components (Configuration Manager Web Console and Predeployment Test Results Web site). This section also explains how to upgrade an existing Application Catalog to be used with AdminStudio 11.0.</p> <ul style="list-style-type: none">• AdminStudio Client Tools, By Edition• Installing the AdminStudio Client Tools• Installing Configuration Manager Web Console and Predeployment Test Web Components• Upgrading an Existing Application Catalog to AdminStudio 11.x
Installing AdminStudio 11.0 Limited Editions	<p>Describes how to install the following AdminStudio Limited Editions:</p> <ul style="list-style-type: none">• Installing AdminStudio 11.0 ZENworks Edition• Installing AdminStudio 11.0 Configuration Manager Edition• Installing AdminStudio 11.0 Limited Edition for LANDesk Management Suite

Table 1-1 • Installing AdminStudio 11.0 Client Tools

Topic	Content
Configuring Compatibility Solver	Describes how to configure Compatibility Solver (which is included with the Application Compatibility Pack) by creating a new Compatibility Solver database and loading report upgrades. Also describes how to import and load a package and to run reports.
Activating AdminStudio	Explains how to activate your AdminStudio serial number, and provides activation troubleshooting information.
Upgrading Your Product Edition	Explains how to use AdminStudio's built-in upgrade capability to activate features in a higher Edition without re-installing the application.
Evaluating AdminStudio	Explains how to evaluate the AdminStudio Enterprise Edition client tools and the AdminStudio Enterprise Server Web tools, and also how to activate your product after purchasing a serial number.

AdminStudio Editions

This section explains the tools and functionality available in each of the available AdminStudio Editions:

- [AdminStudio Full Editions](#)
- [AdminStudio Limited Editions](#)

AdminStudio Full Editions

AdminStudio 11.0 is available in Standard, Professional, and Enterprise Editions. You have the option of purchasing an additional Virtualization Pack and Application Compatibility Pack. Also, functionality varies depending upon whether you have purchased the Per Admin pricing model or the Per Desktop pricing model.

Table 1-2 • AdminStudio Components/Editions

Edition	AdminStudio	Virtualization Pack	Application Compatibility Pack
Standard	<p>Tools</p> <ul style="list-style-type: none"> • Repackager • Distribution Wizard • InstallShield 2012 (Professional Edition) • Tuner • Application Isolation Wizard <p>Functionality</p> <ul style="list-style-type: none"> • Windows Installer repackaging • Windows Installer customization • Preparation for distribution • Basic ISO tagging, including creation of tag files 	<p>Tools</p> <ul style="list-style-type: none"> • Automated Application Converter (Single Application Version) • Virtual Package Editor • Microsoft App-V Assistant • ThinApp Assistant • Citrix Assistant <p>Functionality</p> <ul style="list-style-type: none"> • Convert to virtual applications for common virtualization platforms including Microsoft App-V, Microsoft Server App-V, Citrix XenApp, and VMware ThinApp • App-V package editing 	N/A

Table 1-2 • AdminStudio Components/Editions

Edition	AdminStudio	Virtualization Pack	Application Compatibility Pack
Professional	<p>Tools</p> <p>Same as Standard, plus:</p> <ul style="list-style-type: none"> • Application Manager • OS Snapshot Wizard • QualityMonitor • Predeployment Test <p>Functionality</p> <p>Same as Standard, plus:</p> <ul style="list-style-type: none"> • Application management • Testing, validation, and conflict testing • Standard reporting • Advanced ISO tag file creation, editing, and storage 	<p>Tools</p> <p>Same as Standard, plus:</p> <ul style="list-style-type: none"> • Automated Application Converter (Single Application Version) with Virtualization Suitability Testing <p>Functionality</p> <p>Same as Standard, plus:</p> <ul style="list-style-type: none"> • Test for virtualization suitability for common virtualization platforms including Microsoft App-V, Microsoft Server App-V, Citrix XenApp, and VMWare ThinApp. • Store App-V data in Application Manager • App-V package testing, validation, and conflict testing • Automated conversion of legacy packages to Windows Installer 	<p>Tools & Functionality</p> <p>Compatibility Solver with the following functionality:</p> <ul style="list-style-type: none"> • Single database connection • Summary (not package-specific) compatibility assessment • Application testing and reporting for Windows 7 and 64-bit Windows • Auto-fixing for Windows 7 and 64-bit Windows <div data-bbox="1105 835 1141 884" data-label="Image"></div> <p>Note • For more information, see Edition-Specific Functionality in Compatibility Solver.</p>
Professional Complete	Includes Professional Edition with both the Virtualization Pack and the Application Compatibility Pack .		

Table 1-2 • AdminStudio Components/Editions

Edition	AdminStudio	Virtualization Pack	Application Compatibility Pack
Enterprise (Per Admin)	<p>Tools</p> <p>Same as Professional, plus:</p> <ul style="list-style-type: none"> ● InstallShield 2012 (Premier Edition) ● PackageExpert ● OS Security Patch Wizard ● Job Manager ● Report Center ● Software Repository ● Security Console <p>Functionality</p> <p>Same as Professional, plus:</p> <ul style="list-style-type: none"> ● Application Readiness Dashboard ● Process and workgroup management features ● API features to enable automation of tasks including package import, virtualization, testing/analysis, and distribution 	<p>Tools</p> <p>Same as Professional, plus:</p> <ul style="list-style-type: none"> ● Automated Application Converter (Multiple Application Version) with Suitability Testing <p>Functionality</p> <p>Same as Professional, plus:</p> <ul style="list-style-type: none"> ● Automated conversion of multiple packages to virtual applications ● Automated conversion of multiple legacy packages to Windows Installer ● Application Readiness Dashboard (Including Virtualization Reports) 	<p>Tools & Functionality</p> <p>All of the Compatibility Solver functionality available in Professional, plus:</p> <ul style="list-style-type: none"> ● Multiple database connections, with ability to merge databases ● Detailed per-package compatibility assessment and cost/effort reports ● Application testing and reporting for Windows Server 2008 and 2008 R2 ● Auto-fixing for Windows Server 2008 and 2008 R2 <div>  <p>Note • For more information, see Edition-Specific Functionality in Compatibility Solver.</p> </div>
Enterprise (Per Admin) Complete	Includes Enterprise Edition (Per Admin) with both the Virtualization Pack and the Application Compatibility Pack .		

Table 1-2 • AdminStudio Components/Editions

Edition	AdminStudio	Virtualization Pack	Application Compatibility Pack
Enterprise (Per Desktop)	Tools & Functionality Same as Enterprise (Per Admin)	Tools & Functionality Same as Enterprise (Per Admin)	Tools & Functionality All of the Compatibility Solver functionality available in Enterprise (Per Admin) , plus: <ul style="list-style-type: none"> • Testing of multiple applications simultaneously • Loading of multiple applications simultaneously • Fixing of multiple applications simultaneously Web Application Compatibility Pack (Optional Add-On) <ul style="list-style-type: none"> • Test compatibility of web applications with Internet Explorer 8.0 and 9.0 • Test integration of desktop applications with Internet Explorer 8.0 and 9.0
Enterprise (Per Desktop) Complete	Includes Enterprise Edition (Per Desktop) with both the Virtualization Pack and the Application Compatibility Pack . Web Application Compatibility Pack is available as an optional add-on feature.		



Note • For more information, see [Edition-Specific Functionality in Compatibility Solver](#).

Edition-Specific Functionality in Compatibility Solver

Compatibility Solver is included in the AdminStudio Application Compatibility Pack. The functionality that is available in Compatibility Solver depends on which edition of AdminStudio that you are using.

Functionality	Professional Edition	Enterprise (Per Admin) Edition	Enterprise (Per Desktop) Edition
Multiple database connections, with ability to merge databases		✓	✓
Summary (not package-specific) compatibility assessment	✓	✓	✓
Detailed per-package compatibility assessment and cost/effort reports		✓	✓
<ul style="list-style-type: none"> Profile Profile (Post-Fixing) Packages By Status Report Group By Status Report By Status 			
Available reports (plugins)	Windows 7	✓	✓
	64-bit Windows	✓	✓
	Windows Server 2008 and 2008 R2	✓	✓
	Internet Explorer 8.0 and 9.0 Compatibility for Web Applications		✓ Available only with Web Application Compatibility Pack
	Internet Explorer 8.0 and 9.0 Integration for Desktop Applications		✓ Available only with Web Application Compatibility Pack

Chapter 1: AdminStudio 11.0 Client Tools Installation Guide

AdminStudio Editions

Functionality		Professional Edition	Enterprise (Per Admin) Edition	Enterprise (Per Desktop) Edition
Automatic fixing of package issues	Windows 7	✓	✓	✓
	64-bit Windows	✓	✓	✓
	Windows Server 2008 and 2008 R2		✓	✓
Test multiple applications simultaneously				✓
Load multiple applications simultaneously				✓
Fix multiple applications simultaneously				✓



Note • If you are using AdminStudio Enterprise Per Desktop in evaluation mode, the functionality in Compatibility Solver is limited to a single database connection. During the evaluation period, you can import, test, and fix a maximum of 10 packages through Compatibility Solver. If you do not activate AdminStudio within the evaluation period, Compatibility Solver will stop working when the trial period has ended. You can activate AdminStudio at any time before or after the evaluation period has ended.

AdminStudio Limited Editions

This section describes the tools and functionality available in AdminStudio's Limited Editions:

- [AdminStudio 11.0 ZENworks Limited Editions](#)
- [AdminStudio 11.0 Limited Edition for LANDesk Management Suite](#)
- [AdminStudio 11.0 Microsoft Configuration Manager Edition](#)

AdminStudio 11.0 ZENworks Limited Editions

AdminStudio provides a ZENworks Edition for both ZENworks 10 and 11 users, and for ZENworks 7 users. Information about the ZENworks Edition is presented in the following sections:

- [ZENworks Edition for ZENworks 10 and 11 Users](#)
- [ZENworks Edition for ZENworks 7 Users](#)
- [ZENworks Server Connection Requirement](#)

ZENworks Edition for ZENworks 10 and 11 Users

The AdminStudio 11.0 ZENworks Edition for Novell ZENworks Configuration Manager (ZCM) 10 and 11 customers includes all of the features of AdminStudio Standard Edition, the basic version of the AdminStudio solution. AdminStudio Standard Edition provides a cost-effective way for software packagers to migrate applications to Windows Installer. It enables control over MSI packaging, customization, and distribution activities, helping organizations rapidly and reliably package and deploy applications. For more information, see [Standard Edition](#).

ZENworks Edition for ZENworks 7 Users



AdminStudio 11.0 ZENworks Edition for ZENworks 7 users is a customized version of AdminStudio that allows system administrators to rapidly prepare reliable Windows Installer (.msi) software packages for distribution across their enterprises. AdminStudio enables companies to take full advantage of the benefits of Windows Installer and reduces total cost of ownership by simplifying the installation, customization, and management of applications.

- [ZENworks Edition for ZENworks 7 Users Components](#)
- [ZENworks Edition for ZENworks 7 Users Customizations](#)

ZENworks Edition for ZENworks 7 Users Components

AdminStudio 11.0 ZENworks Edition for ZENworks 7 users includes the following AdminStudio tools:

Table 1-3 • AdminStudio 11.0 ZENworks Edition for ZENworks 7 Users Components

Tool	Description
Repackager	<p>Use to repackage and convert Novell ZENworks projects (.axt/.aot) into Windows Installer packages. Full Repackager functionality is provided, except for InstallScript MSI Conversion.</p>  <hr/> <p>Note • For more information, see Repackager Customizations.</p>
Distribution Wizard (Customized for ZENworks)	<p>Prepare a Windows Installer package for distribution on a ZENworks Configuration Management Server, via ZENworks desktop application distribution, or via ZENworks server distribution.</p>  <hr/> <p>Note • For more information, see Distribution Wizard Customizations.</p>
Tuner	<p>Use to quickly create transforms (.mst), including Response File transforms, to customize software already in the Windows Installer format and automatically validate that any changes conform to Microsoft guidelines.</p>

ZENworks Edition for ZENworks 7 Users Customizations

Additional information about the components available in AdminStudio 11.0 ZENworks Edition for ZENworks 7 Users is presented in the following sections:

- [Repackager Customizations](#)
- [Distribution Wizard Customizations](#)
- [Application Catalogs](#)
- [Projects and Process Templates](#)

Repackager Customizations

Repackager is customized to open Repackager projects (*.irp), legacy Repackager files (*.inc), and Novell ZENworks files (*.axt and *.aot).

Also, Repackager in the AdminStudio ZENworks Edition supports the file and registry delete operations that are specific to ZENworks and the .axt conversion process. As a result, within the Repackager interface there may be two additional views displayed which allow you to modify the registry delete or file delete operations.

Distribution Wizard Customizations

AdminStudio 11.0 ZENworks Edition includes a standalone AdminStudio Distribution Wizard for ZENworks Configuration Management, which you can use to prepare a Windows Installer package (.msi)—including any associated transforms—for distribution on a ZENworks Configuration Management Server.

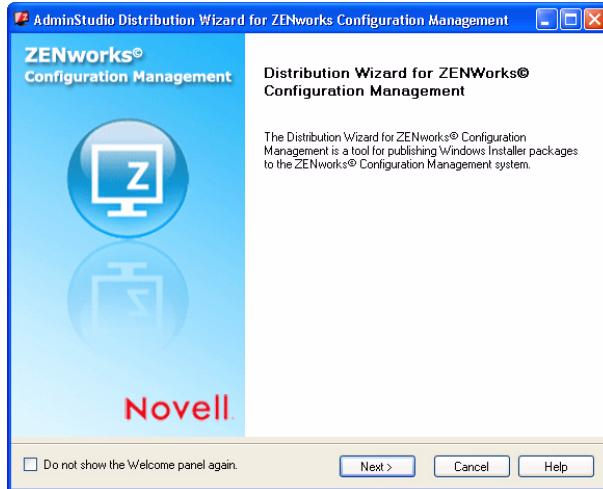


Figure 1-1: AdminStudio Distribution Wizard for ZENworks Configuration Management Welcome Panel

Also, using the standard Distribution Wizard, you can distribute a package via ZENworks desktop application distribution, via ZENworks server distribution, as an administrative install, to an FTP location, or to a Network location.

Application Catalogs

ZENworks Edition users do not need access to AdminStudio Application Catalog databases. Therefore, in AdminStudio ZENworks Edition, you cannot connect to an Application Catalog or create a new Application Catalog.

Projects and Process Templates

Since the **Process Assistants** tab (formerly the **Projects** tab) and **Process Template Editor** (formerly the **Workflow Templates** tab) in the AdminStudio interface are used primarily to manage application migration projects, they are disabled in the ZENworks Edition.

ZENworks Server Connection Requirement

The first time you launch an AdminStudio ZENworks Edition tool, you will be prompted to log in to a ZENworks eDirectory server or a ZENworks Configuration Management server. After a successful login, you will not be prompted to login again.

AdminStudio 11.0 Limited Edition for LANDesk Management Suite

Now available to users of the latest version of the LANDesk Management Suite, the AdminStudio Limited Edition for LANDesk Management Suite enables IT administrators to capture information about applications, customize those applications for their organization's needs, and hand off the prepared applications to the LANDesk Management Suite 8.8 for deployment.

AdminStudio helps LANDesk users to speed the delivery of applications to the organization's endpoints and better ensure the IT team is using a consistent process to deliver reliable Windows applications. The end result is reduced total cost of ownership for desktop management in the enterprise.



AdminStudio 11.0 Limited Edition for LANDesk Management Suite is a customized version of AdminStudio that allows system administrators to rapidly prepare reliable Windows Installer (.msi) software packages for distribution across their enterprises. AdminStudio enables companies to take full advantage of the benefits of Windows Installer and reduces total cost of ownership by simplifying the installation, customization, and management of applications.

- [LANDesk Edition Components](#)
- [LANDesk Edition Customizations](#)
- [Evaluating AdminStudio Limited Edition for LANDesk Management Suite](#)

LANDesk Edition Components

AdminStudio 11.0 LANDesk Edition includes the following AdminStudio tools:

Table 1-4 • AdminStudio 11.0 LANDesk Edition Components

Tool	Description
Repackaging Wizard (Customized for LANDesk)	Use the Snapshot method of the Repackaging Wizard to repackage and convert LANDesk files into Windows Installer packages.  Note • For more information, see Repackager Customizations .
Distribution Wizard (Customized for LANDesk)	Use to deliver a final Windows Installer package (.msi) to the LANDesk Management Suite or to a network location, FTP server, or an administrative location.  Note • For more information, see Distribution Wizard Customizations .
Tuner	Use this full version of AdminStudio Tuner to amend, modify, or remove information from a Windows Installer package or transform, and to ensure that packages conform to Microsoft guidelines and organization-specific requirements.

LANDesk Edition Customizations

Additional information about the components available in AdminStudio 11.0 Limited Edition for LANDesk Management Suite is presented in the following sections:

- [LANDesk Server Connection Requirement](#)
- [Repackager Customizations](#)
- [Distribution Wizard Customizations](#)
- [Application Catalogs](#)
- [Projects and Process Templates](#)

LANDesk Server Connection Requirement

The first time you launch an AdminStudio LANDesk Edition tool, you will be prompted to log in to a LANDesk Management Suite Server. After a successful login, you will not be prompted to login again.

Repackager Customizations

In the AdminStudio Limited Edition for LANDesk Management Suite, you can use the Repackaging Wizard's Snapshot method to repackage a legacy installation (.exe) and convert it to a Windows Installer package. This enables you to quickly and correctly capture system changes and data to help ensure the application or patch is customized for the enterprise's needs.

However, you need to upgrade to Standard Edition in order to use the Repackager interface to open and modify Repackager project files, convert other legacy installation types to a Repackager project, create an InstallShield Editor project (.ism), build an isolated Windows Installer package, or to configure the exclusions used when repackaging a legacy installation.



Note • Repackager projects (.irp) allow you to visually analyze the files, .ini files, shortcuts, and registry entries captured or changed during the conversion of a legacy setup into a Windows Installer package. You can also exclude files, shortcuts, registry entries, and .ini files from the resulting Windows Installer package, without affecting the original setup data.

Distribution Wizard Customizations

AdminStudio LANDesk Edition includes a customized version of the Distribution Wizard that enables you to distribute a package to a LANDesk server, as an administrative install, to an FTP location, or to a Network location.

Application Catalogs

LANDesk Edition users do not need access to AdminStudio Application Catalog databases. Therefore, in AdminStudio LANDesk Edition, you cannot connect to an Application Catalog or create a new Application Catalog.

Projects and Process Templates

Since the **Process Assistants** tab (formerly the **Projects** tab) and **Process Template Editor** (formerly the **Workflow Templates** tab) in the AdminStudio interface are used primarily to manage application migration projects, they are disabled in the LANDesk Edition.

Evaluating AdminStudio Limited Edition for LANDesk Management Suite

If you have AdminStudio Limited Edition for LANDesk Management Suite, you can choose to evaluate AdminStudio for 45 days (instead of the typical 21 days). Also, the set of tools available to you in evaluation mode depends upon the selection you made on the **Setup Type** panel during installation:

- **Typical**—If you chose this **Setup Type** option during installation, only the tools included in this Limited Edition were installed. Therefore, only those tools will be available to you during your evaluation period.
- **Custom**—If you chose this **Setup Type** option during installation, all of the AdminStudio Enterprise Edition client tools were installed. Therefore, all of those tools will be available to you during your evaluation period.

AdminStudio 11.0 Microsoft Configuration Manager Edition

AdminStudio Configuration Manager Edition is the result of collaboration between AdminStudio and the Microsoft team to provide Configuration Manager customers with an easy way to prepare reliable, customized Windows Installer packages for distribution via Configuration Manager.

AdminStudio Configuration Manager Edition provides IT professionals with the ability to quickly convert legacy applications to the industry-standard Windows Installer (.msi) format, customize those packages to meet corporate standards, and release them to Configuration Manager for successful distribution.

- [Configuration Manager Edition Features](#)
- [Configuration Manager Edition Requirement: Connection to a Configuration Manager Server](#)


Configuration Manager Edition Features

AdminStudio Configuration Manager Edition is a limited-featured version of AdminStudio Professional Edition. You can use it to quickly convert applications with legacy setups to Windows Installer. You can also use it to create transforms to customize Windows Installer packages to meet company and department-specific standards. AdminStudio Configuration Manager Edition features a wizard that automatically converts Windows Installer packages to SMS deploy-ready packages, and a Web-based console that simplifies package distribution via Configuration Manager.

A true starter edition tool, the AdminStudio Configuration Manager Edition contains 3 key tools: a custom version of the Repackager, Tuner, and Distribution Wizard designed to align with Microsoft System Center Configuration Manager. For customers who require more than basic functionality, AdminStudio Standard, Professional and Enterprise Editions all include functionality to handoff packages to Microsoft System Center Configuration Manager and previous SMS versions.

The AdminStudio Configuration Manager Edition includes the following AdminStudio tools:

Table 1-5 • AdminStudio Configuration Manager Edition Features

Tool	Description
Repackager (Customized for Microsoft Configuration Manager)	<p>A wizard-based tool that makes it easy to convert legacy setups into Windows Installer packages. The Configuration Manager Edition includes a limited version of Repackager in which you can:</p> <ul style="list-style-type: none"> • Use the Repackaging Wizard's Snapshot Method to create a new Repackager project by capturing a non-Windows Installer setup. • Build the Repackager project to create a Windows Installer package.  <p><i>Edition • Full Repackager functionality is available in AdminStudio Standard, Professional, and Enterprise Editions.</i></p>
Distribution Wizard (Customized for Microsoft Configuration Manager)	<p>Fully functional version customized for the Configuration Manager Edition which enables you to distribute Windows Installer packages to a Microsoft System Center Configuration Manager server. You can also use Distribution Wizard to create the system-specific files necessary to successfully deploy packages via SMS.</p>
Tuner	<p>Fully functional version. You can use it to quickly create transforms (.mst), including Response File transforms, to customize software already in the Windows Installer format and automatically validate that any changes conform to Microsoft guidelines.</p>

Also, there are several more differences:

- **Restricted Application Catalog access**—Configuration Manager Edition users cannot create a new Application Catalog or connect to any other Application Catalog except sample.mdb, the catalog shipped with AdminStudio for use in limited editions.
- **Projects and Process Templates**—The **Process Assistants** tab (formerly the **Projects** tab) and the **Process Template Editor** (formerly the **Workflow Templates** tab) are not included.

Configuration Manager Edition Requirement: Connection to a Configuration Manager Server

To use AdminStudio 11.0 Configuration Manager Edition, you must be able to connect to a Configuration Manager Server. The first time you launch one of the AdminStudio tools, you will be prompted to enter the login credentials to a Configuration Manager Server.

After you successfully connect to a Configuration Manager Server, you will not be required to enter this information again.



Important • Install AdminStudio Configuration Manager Edition on a standard Windows client machine, not on a Configuration Manager server. When AdminStudio Configuration Manager Edition is launched, the application tries to confirm that there is a Configuration Manager server available by using client WMI classes to connect to a Configuration Manager server. This connection apparently cannot be completed if it is initiated from a Configuration Manager server.

Contacting Us

You may contact us from anywhere in the world by visiting the our Web site at:

<http://www.flexerasoftware.com>

AdminStudio 11.0 System Requirements

Before installing the AdminStudio client tools, review the following AdminStudio architecture diagram and the hardware and software requirements.

- [AdminStudio Architecture Diagram](#)
- [Hardware and Software Requirements](#)
- [Installing Internet Information Services \(IIS\)](#)

AdminStudio Architecture Diagram

While the AdminStudio client tools are usually installed on one machine, they interact with database servers, web tools, and other systems. The following architecture diagram illustrates how the components of AdminStudio Enterprise Edition Complete interact.



Figure 2-1: AdminStudio Architecture Diagram

This diagram includes the following components:.

Table 2-1 • AdminStudio Architecture Diagram

Component	Description
AdminStudio Client	Machine where AdminStudio client tools are installed.
AdminStudio Enterprise Database	Microsoft SQL Server database server containing the AdminStudio Application Catalog/Workflow Manager database.

Table 2-1 • AdminStudio Architecture Diagram

Component	Description
Compatibility Solver Database	Microsoft SQL Server database server containing the Compatibility Solver database.
Software Repository	Location on a file server where you can securely store not only Windows Installer (.msi) and Microsoft App-V (.sft) packages, but also all of the files that are associated with those packages.
Workflow Manager Web Server	Server where Workflow Manager application is installed.
Workflow Manager File Server	Location where files that are uploaded to Workflow Manager are stored.
Active Directory Server	Enterprise Active Directory server.
SMTP Server	Enterprise email server.
Third Party Servers	AdminStudio can interact with Microsoft System Center Configuration Manager, Novell ZENworks, and LANDesk servers.



Note • For more information on AdminStudio Enterprise Edition, Virtualization Pack, and Application Compatibility Pack, see [AdminStudio Editions](#).


Hardware and Software Requirements

All of AdminStudio—Web sites, XML Web services, and database—can reside on a single machine; however, the configuration detailed in this section is recommended.

- [AdminStudio Client Tool Machine](#)
- [Application Catalog / Compatibility Solver Database Server](#)
- [AdminStudio Enterprise Server / Workflow Manager Server](#)
- [Software Repository Server](#)
- [Limited Edition Requirements](#)
- [Virtual Machines](#)


AdminStudio Client Tool Machine

The following table lists the recommended system configuration for a machine running the AdminStudio client tools (including Compatibility Solver).

Item	Description
Processor	32-bit (x86) or 64-bit (x64) processor at 1 GHz or greater  Note • All of the AdminStudio client tools run on 64-bit Windows operating systems. To repackaging 64-bit applications or create 64-bit App-V packages, install AdminStudio on a 64-bit Windows operating system.
RAM	1 GB
Hard Disk	4.0 GB
Display	Designed for XGA at 1024 x 768 resolution or higher
Operating System	Windows 7, Windows Vista, Windows XP (SP1 or later is recommended), or Windows Server 2003 or later. Predeployment Test and Configuration Manager Web Console require Microsoft IIS 5 or later.
Browser	Microsoft Internet Explorer 5.5 or later
Privileges	Administrative privileges on the system

Application Catalog / Compatibility Solver Database Server


The following table lists the recommended system configuration for a database server to store AdminStudio Application Catalog databases or Compatibility Solver databases.

Item	Description
Processor	32-bit (x86) or 64-bit (x64) processor at 1 GHz or greater
RAM	1 GB or greater (2 GB preferred)
Hard Disk Space	80 GB or greater
Operating System	Windows Server 2003 or later
Database Software	AdminStudio supports SQL Server 2005 or later databases. SQL Server must be installed with case-insensitive dictionary sort order and ISO-8859-1 character set. (Use <code>sp_helpsort</code> T-SQL command for more information.)
	 <p>Note • Before attempting to connect to an existing Microsoft SQL Server, open SQL Server Configuration Manager and make sure that the following three protocols are enabled:</p> <ul style="list-style-type: none"> • Shared Memory • Named Pipes • TCP/IP

AdminStudio Enterprise Server / Workflow Manager Server

The following table lists the recommended system configuration for a machine running the AdminStudio Enterprise Server tools (Security Console, Report Center, Job Manager) and/or Workflow Manager.

Item	Description
Processor	32-bit (x86) or 64-bit (x64) processor at 1 GHz or greater
RAM	1 GB or greater (2 GB preferred)
Hard Disk Space	100 GB or greater
Operating System	Windows Server 2003 or later

Item	Description
IIS	IIS 6.0 or later  Note • AdminStudio Web Server also supports IIS 7.0 or later if IIS 6.0 compatibility mode is turned on.
.NET	.NET Framework 3.5 SP1 (including ASP.NET 3.5 SP1 registered with IIS)
MSXML	MSXML 4.0
Running on a Domain Controller	If running on a domain controller, you will have to implement one of the procedures described in the Microsoft Developer Network topic Running ASP.NET on a Domain Controller , available at: http://msdn2.microsoft.com/en-us/library/aa579070.aspx

Software Repository Server

The following tables lists the recommended system configuration for the machine that stores the Software Repository files.

Item	Description
Processor	512 MHz or greater
RAM	512 MB or greater
Hard Disk Space	100 GB or greater
Operating System	Windows Server 2003 or later

Limited Edition Requirements

The AdminStudio Limited Editions have the following additional requirements:

- [ZENworks Edition Requirement: Connection to a ZENworks Server](#)
- [Limited Edition for LANDesk Management Suite Requirement: Connection to a LANDesk Server](#)
- [Configuration Manager Edition Requirement: Connection to a Configuration Manager Server](#)

ZENworks Edition Requirement: Connection to a ZENworks Server

To use AdminStudio ZENworks Edition, you must be able to connect to a ZENworks server. The first time you launch one of the AdminStudio tools, you will be prompted to enter the login credentials to a ZENworks server. After you successfully connect to that server, you will not be required to enter this information again.



Note • For more information, see [Activating AdminStudio ZENworks Edition](#).

Limited Edition for LANDesk Management Suite Requirement: Connection to a LANDesk Server

The AdminStudio Limited Edition for LANDesk Management Suite can only be used when the LANDesk Management Suite is already installed. The first time you launch an AdminStudio LANDesk Edition tool, you will be prompted to log in to a LANDesk Management Suite Server. After a successful login, you will not be prompted to login again.

Configuration Manager Edition Requirement: Connection to a Configuration Manager Server

To use AdminStudio 11.0 Configuration Manager Edition, you must be able to connect to a Configuration Manager Server. The first time you launch one of the AdminStudio tools, you will be prompted to enter the login credentials to a Configuration Manager Server. After you successfully connect to a Configuration Manager Server, you will not be required to enter this information again.



Note • Install AdminStudio Configuration Manager Edition on a standard Windows client machine, not on a Configuration Manager server. When AdminStudio Configuration Manager Edition is launched, the application tries to confirm that there is a Configuration Manager server available by using client WMI classes to connect to a Configuration Manager server. This connection apparently cannot be completed if it is initiated from a Configuration Manager server.

Virtual Machines



Edition • Automated Application Converter is included in the AdminStudio Virtualization Pack.

Automated Application Converter performs automated repackaging on virtual machines. This section lists the virtual machine platform and virtual machine image system requirements.

- [Supported Virtual Machine Platforms](#)
- [VMware Requirements](#)
- [Microsoft Hyper-V Server Requirements](#)
- [Virtual Machine Image Requirements](#)

Supported Virtual Machine Platforms

The Automated Application Converter supports automated repackaging on virtual machines from the following platforms:

- VMware ESX/ESXi Server, Version 3.5 Update 3 or later
- VMware Workstation 6.5 or later
- Microsoft Hyper-V Server 2008 R2 or later

VMware Requirements

As described above, Automated Application Converter supports automated repackaging on VMware ESX/ESXi Server and VMware Workstation.

- [VMware VIX API Requirement](#)
- [VMware ESX/ESXi Server Permission Requirements](#)

VMware VIX API Requirement

In order for the Automated Application Converter to perform automated repackaging, it needs to communicate with the virtualization technology that you are using. If you are using VMware virtualization technology (VMware ESX or ESXi Server or a local VMware Workstation), you need to have the VMware VIX API installed on the same machine as the Automated Application Converter. You can do this by either installing VMware Workstation on that machine or by downloading and installing the VMware VIX API from the following location:

<http://www.vmware.com/support/developer/vix-api>



Note • It is recommended that you always install the latest version of VMware VIX so that you have the most options and the latest bug fixes.

VMware ESX/ESXi Server Permission Requirements

If you plan to use a VMware ESX/ESXi Server in conjunction with Automated Application Converter, make sure that the account that you use to log in to this server has the permissions/roles needed to automatically open a VM using VMware VIX API. The account needs to either have an administrator role assigned or, at least, have the following three roles assigned:

- All Privileges/Virtual Machine/State/Create Snapshot
- All Privileges/Virtual Machine/State/Delete Snapshot
- All Privileges/Virtual Machine/Interaction/Console Interaction

If the login account does not have these permissions/roles, Automated Application Converter will be unable to automatically boot up a virtual machine on that server.

Microsoft Hyper-V Server Requirements

As described above, Automated Application Converter supports automated repackaging on Microsoft Hyper-V Server. When preparing a Hyper-V Server for use with Automated Application Converter, make sure that the following conditions are met:

- **Configuration tools**—Verify that the Hyper-V configuration tools are installed on the Hyper-V server machine. These tools can be installed using the Microsoft Hyper-V Management Console.
- **Connection**—Verify that you can successfully connect to the Hyper-V Server from the machine where AdminStudio Automated Application Converter is installed.
- **Permissions**—Make sure that the Hyper-V Server user has the following permissions to perform operations on the Hyper-V machines:
 - Permission to create/restore/delete VM snapshots
 - Permission to start and stop virtual machines
 - Permission to access console sessions
- **Configuration settings**—Connecting to a WMI namespace on a remote computer running Windows Vista or Windows Server 2008 may require changes to configuration settings. Check the following configuration settings on the AdminStudio machine as well as on the Hyper-V Server machine:
 - Windows Firewall Settings
 - User Account Control (UAC) Settings
 - DCOM Settings
 - Common Information Model Object Manager (CIMOM) Settings

For detailed information, see [Connecting to WMI Remotely](#) at:

[http://msdn.microsoft.com/en-us/library/aa822854\(VS.85\).aspx](http://msdn.microsoft.com/en-us/library/aa822854(VS.85).aspx)

Virtual Machine Image Requirements

Automated Application Converter uses virtual machines to perform automated repackaging. These virtual machines have the following requirements:

Virtual Machine System Requirements

When creating a virtual machine image that will be hosted on one of the virtual machine platforms listed above, the recommended minimum requirements should meet those required by the applications you are trying to repackage. Since you repackage on the target deployment platform, the virtual machine image should closely resemble the target deployment environment.

Preparing Your Virtual Machines for Use With the Automated Application Converter

You need to prepare each virtual machine that you are going to use with the Automated Application Converter to perform automated repackaging by running the Virtual Machine Preparation setup and by creating a snapshot. For instructions, see [Preparing Your Virtual Machines for Use With the Automated Application Converter](#).

Installing Internet Information Services (IIS)

Internet Information Services (IIS) is required to be installed on the machine on which you are installing Configuration Manager Web Console and/or the Predeployment Test Results Web site.

- Windows Vista and Windows 7
- Windows XP and Windows Server 2003

Windows Vista and Windows 7

To install IIS on a Windows Vista or Windows 7 machine, perform the following steps.



Task: *To install IIS, perform the following steps:*

1. From the **Control Panel**, select **Programs**.
2. Under **Programs and Features**, click **Turn Windows features on or off**. The **Turn Windows features on or off** dialog box opens.
3. Expand **Internet Information Services**. Three subcategories are listed: **FTP Server**, **Web Management Tools**, and **World Wide Web Services**.
4. Expand **Web Management Tools** and select all of the checkboxes in that category.
5. Under **World Wide Web Services**, expand **Application Development Features** and select the **ASP.NET** checkbox.
6. Click **OK**.

Windows XP and Windows Server 2003

To install IIS on a Windows XP or Windows Server 2003 machine, perform the following steps.



Task: *To install IIS, perform the following steps:*

1. From the **Control Panel**, select **Add or Remove Programs**. The **Add or Remove Programs** dialog box opens.
2. Select **Add/Remove Windows Components**. The **Windows Components Wizard** opens.
3. Perform one of the following steps, depending upon your operating system:
 - **Windows XP**—Select **Internet Information Services (IIS)** in the **Components List** and click **Next**.
 - **Windows Server 2003**—Select **Application Server** and click **Details** to open the **Application Server** dialog box. Then select **Internet Information Services (IIS)**, click **OK** to close the **Application Server** dialog box, and then click **Next**.

The **Configuring Components** dialog box opens, and the installation begins.

Chapter 2: AdminStudio 11.0 System Requirements

Installing Internet Information Services (IIS)

4. If you are prompted to insert a Windows CD, do one of the following:
 - **If the Windows files were copied onto the hard drive**—In the **Copy file from** dialog box, enter C:\i386 or whatever the location of your i386 directory is, and then click **OK** to continue.
 - **If you have Windows installation CDs**—Insert the CD into the CD-ROM and click **OK** to continue.

You will be informed when installation is complete.

Installing AdminStudio 11.0 Client Tools (Full Editions)

You have a lot of flexibility when installing the AdminStudio client tools. You can choose to install:

- All program features including the Web-based features (Configuration Manager Web Console and Predeployment Test Results Web components), or
- All program features except for the Web-based features, or
- Only those features that you select

Instructions for installing AdminStudio client tools is presented in the following sections:

Table 3-1 • Installing AdminStudio Client Tools

Topic	Description
AdminStudio Client Tools, By Edition	Describes each of the AdminStudio client tools and identifies the AdminStudio Edition they are available in.
Installing the AdminStudio Client Tools	Explains how to run the AdminStudio client tools installation.
Installing Configuration Manager Web Console and Predeployment Test Web Components	Explains how to install Configuration Manager Web Console and the Predeployment Test Web components separately, on a different machine than the one the rest of the AdminStudio client tools were installed on.
Upgrading an Existing Application Catalog to AdminStudio 11.x	Explains how to upgrade an existing 5.x, 6.x, or 7.x Application Catalog to use the AdminStudio 8.x schema.

AdminStudio Client Tools, By Edition

Here is a breakdown of the AdminStudio client tools, listed by Edition:

Table 3-2 • AdminStudio Client Tools, By Edition

Icon	Tool	Standard	Professional	Enterprise	Virtualization Pack	Application Compatibility Pack
	Repackager					
	Distribution Wizard					
	InstallShield Editor					
	Tuner					
	Application Isolation Wizard					
	Application Manager					
	QualityMonitor					
	Configuration Manager Web Console					
	Predeployment Test					
	PackageExpert					

Table 3-2 • AdminStudio Client Tools, By Edition (cont.)

Icon	Tool	Standard	Professional	Enterprise	Virtualization Pack	Application Compatibility Pack
	OS Security Patch Wizard					
	Automated Application Converter					
	Virtual Package Editor					
	InstallShield Editor Virtual Assistants					
	Compatibility Solver					



Note • For information on installing the AdminStudio Enterprise Server and the AdminStudio Enterprise tools (Security Console, Job Manager and Report Center), see the AdminStudio Web Server Installation Guide, which is available on the AdminStudio Downloads site.



Note • If you originally purchased AdminStudio Standard or Professional Edition, or if you are using a Limited Edition, and want to upgrade to a higher Edition, an upgrade feature has been built-in to AdminStudio that allows you to activate features in a higher Edition without re-installing the application. For more information, see [Upgrading Your Product Edition](#).

Installing the AdminStudio Client Tools

To install the AdminStudio client tools, perform the following steps.



Note • Because the AdminStudio 11.0 client tools installation program is configured as a major upgrade, if a computer has an existing older version of AdminStudio (6.0 through 9.5), it is not necessary to uninstall that older version prior to installing AdminStudio 11.0.



Task: **To install the AdminStudio client tools:**

1. Launch the AdminStudio installation program. The **Preparing to Install** panel may open, and the Microsoft .NET Framework will be installed if it is not already present.

When the installation is ready to proceed, the **Welcome** panel opens.

2. Click **Next**. The **License Agreement** panel opens.
3. Select the **I accept the terms in the license agreement** option and click **Next**. The **Customer Information** panel opens.
4. Enter a **User Name** and **Organization** name to identify this installation of AdminStudio, and click **Next** to continue. The **Destination Folder** panel opens.
5. If you want to install AdminStudio in the specified directory, click **Next**. If you want to select a different directory, click **Change**, select a new directory, and then click **Next**. The **AdminStudio Shared Location** panel opens.

The AdminStudio Shared directory contains shared information for repackaging and conflict identification, and other AdminStudio functions, including the following:

- The Shared AdminStudio.ini file, which specifies default Application Catalog database settings
- Application Manager duplicate package identifier options
- Repackager isrepackager.ini exclusion list
- OS Snapshot issnapshot.ini file
- ConflictSolver user-defined ACEs
- Distribution Wizard Distribution Type templates and .ini files

If you are working in a team environment, the AdminStudio Shared directory should be set to a centralized network location, accessible by all AdminStudio users at your organization, rather than on your local machine.

6. Specify the location of your organization's AdminStudio Shared directory, and click **Next**. The **Setup Type** panel opens.

7. Select one of the following options to specify which components you want to install on this machine:

- **Complete**—Select this option to install all client tool program features of AdminStudio, including the Predeployment Test Results Web site and Configuration Manager Web Console, which are both Web-based features.
- **Client-Only**—Select this option to install all client tool program features of AdminStudio except for the two Web-based features: Predeployment Test Results Web site and Configuration Manager Web Console.
- **Custom**—Select this option if you want to open an additional panel where you can select exactly which tool you want to install.



Note • For information on installing and configuring the Configuration Manager Web Console and the Predeployment Test Results Web site, see [Installing Configuration Manager Web Console and Predeployment Test Web Components](#).

8. Do one of the following:

- **If you selected Complete or Client-Only in the previous step**, click **Next** to open the **Ready to Install the Program** panel, and skip to [Step 10](#).
- **If you selected Custom**, click **Next** and continue with [Step 9](#). The **Custom Setup** panel opens.

On this panel, AdminStudio features are grouped into three categories:

- **Client Features**—Includes all of the AdminStudio client tools such as Repackager, ConflictSolver, InstallShield Editor, Distribution Wizard, etc.
- **Web Related Features**—Includes Configuration Manager Web Console and Predeployment Test Results Web sites.
- **Server Features**—Includes Job Manager Engine and FLEXwrap License Server.




As you select each feature, information about that feature is listed in the **Feature Description** area, and the location where the selected feature will be installed is listed under the feature tree box.

The icon next to the feature name indicates whether that feature is selected for installation. You have the following options:

Icon	Install State	Description
	This feature will be installed on local hard drive	This client tool will be installed on the local computer.
	This feature, and all subfeatures, will be installed on local hard drive	All of the client tools in the selected group will be installed on the local computer.
	This feature will be installed to run from the network	[Configuration Manager Web Console & Predeployment Test Results Web site only] This Web tool will be installed to run from the network.

Chapter 3: Installing AdminStudio 11.0 Client Tools (Full Editions)

Installing the AdminStudio Client Tools

Icon	Install State	Description
	This feature, and all subfeatures, will be installed to run from the network	[Configuration Manager Web Console & Predeployment Test Results Web site only] All of the Web tools in the selected group will be installed to run from the network.
	This feature will be installed when required	This feature will be installed if it is required by one of the other features that are being installed.
	This feature will not be available	This feature will not be installed even if it is required by one of the other features that are being installed.



Note • If you have already used this installation to install some AdminStudio components, you can click **Change** on the Control Panel **Add or Remove Programs** dialog box to install an additional component or to selectively uninstall a component. In this case, when the **Custom Setup** panel opens, the current **Install State** of each AdminStudio components will be displayed next to each component. Only change the **Install State** of those components you want to install or uninstall. If the component is already installed, and you want it to remain installed, do not make any changes to that component's **Install State**.

9. By default, all features are selected to be installed on the local hard drive. Click on the icon next to each feature and set its installation status so that only those features that you want to install are selected.
10. Click **Next**. The **Ready to Install the Program** panel opens.
11. Click **Install** to begin the installation process. When installation is complete, the **Completed** panel opens, and you are prompted to register this product on the AdminStudio Web site.
12. Proceed with one of the following:
 - [Activating AdminStudio \(Full Edition\) Upon Initial Startup](#)
 - [Evaluating AdminStudio Enterprise Edition Client Tools](#)



Note • If you have purchased the Application Compatibility Pack, perform the steps listed in [Configuring Compatibility Solver](#) to create a new Compatibility Solver database and to load report upgrades.



Note • When you launch AdminStudio for the first time, you may be prompted to install the AdminStudio Service Packs. Follow the prompts to install all recommended Service Packs.



Important • To ensure the proper functioning of the Configuration Manager Web Console and Predeployment Test Results Web sites, you must open the HTTP Port 80 in the Windows Firewall settings on the machine that will be hosting these Web sites. See [Open Port 80 in the Windows Firewall Settings](#).

Installing Configuration Manager Web Console and Predeployment Test Web Components

The Configuration Manager Web Console and Predeployment Test Web components are web-based components included with AdminStudio Professional and Enterprise Editions. You can install these features as part of the client tools installation, by selecting **Complete** on the **Setup Type** panel of the Installation Wizard, or you can choose to install them at a later time or on another machine by using the **Custom** option on the **Setup Type** panel.

Installing Web Tools Separately from the Client Tools

To install the Configuration Manager Web Console and Predeployment Test Web components separately from the client tools installation, perform the following steps:



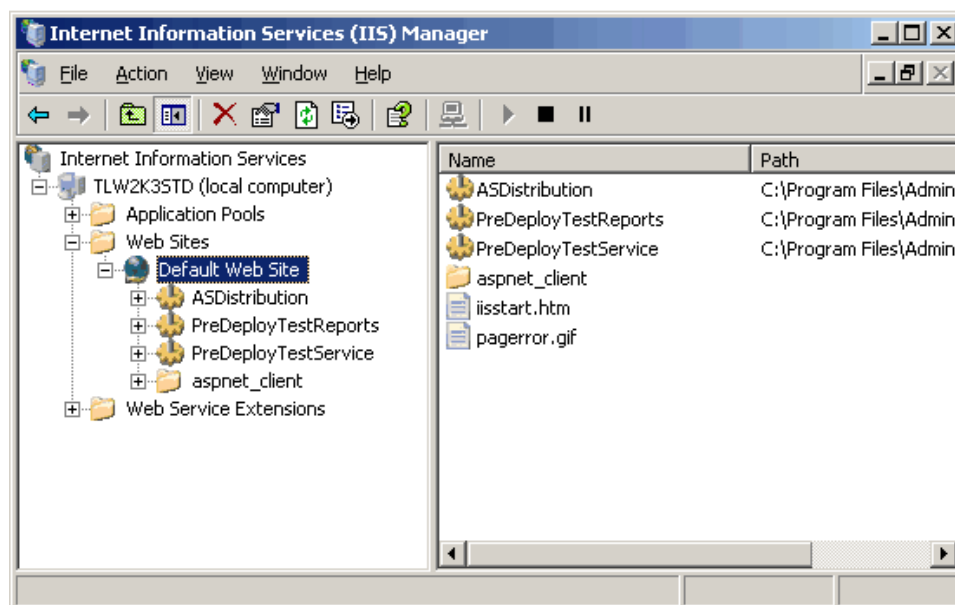
Task: *To install the Configuration Manager Web Console and Predeployment Test Web components separately:*

1. Make sure that IIS is installed on the machine you are going to install Configuration Manager Web Console and Predeployment Test Web components on. For information on how to install IIS, see [Installing Internet Information Services \(IIS\)](#).
2. Launch the AdminStudio installation program. The **Welcome Panel** opens.
3. Proceed through the installation as described in [Installing the AdminStudio Client Tools](#) until you get to the **Setup Type** panel.
4. Select **Custom** and click **Next**. The **Custom Setup** panel opens.
5. Open the **Web-Related Features** group and set both **Configuration Manager Web Console** and **Predeployment Web Console** to **This feature will be installed on local hard drive**.
6. Do one of the following:
 - **Installing on a machine that does not have any AdminStudio components**—If the machine you are installing on does not have any AdminStudio components installed, and if **Configuration Manager Web Console** and **Predeployment Web Console** are the only AdminStudio features that you want to install, set the **Client Features** and **Server Features** groups to **This feature will not be available**.
 - **Installing on a machine that already has AdminStudio components**—If the machine already has AdminStudio components installed, leave the settings of the **Client Features** and **Server Features** groups unchanged.
7. Click **Next**. The **Ready to Install the Program** panel opens.
8. Click **Install** to begin the installation process.
9. When installation is complete, you will be prompted to restart the machine.
10. After the machine restarts, open **IIS Manager**.

Chapter 3: Installing AdminStudio 11.0 Client Tools (Full Editions)

Installing Configuration Manager Web Console and Predeployment Test Web Components

11. To confirm that the files were installed properly, expand the **Web Sites** directory. There will be three web sites listed: **ASDistribution**, **PreDeployTestReports**, and **PreDeployTestService**:



12. Write down the IP address of the machine.



Note • To find out what a machine's IP address is, open the **Command Prompt** (by selecting a shortcut in the **Accessories** folder on the **Start** menu) and type **ipconfig** at the prompt. The IP address of that machine is listed on the **IP Address** line.

Configuring Configuration Manager Web Console and Predeployment Test Results Web Site

To configure the Configuration Manager Web Console and Predeployment Test Results Web site, perform the following:

- [Open Port 80 in the Windows Firewall Settings](#)
- [Verification of the Installed Components](#)

Open Port 80 in the Windows Firewall Settings

On operating systems that have an active firewall, Port 80 may be blocked by default. This causes problems with the Configuration Manager Web Console and Predeployment Test Results Web sites, blocking users from opening these Web sites or posting results.

To ensure the proper functioning of the Configuration Manager Web Console and Predeployment Test Results Web sites, you must open the HTTP Port 80 in the Windows Firewall settings on the machine that will be hosting these Web sites.

Verification of the Installed Components

To confirm that these components are working properly, you need to enter the URL of the installed components and then check to make sure that they launch properly.

- [Verify Configuration Manager Web Console](#)
- [Verify Predeployment Test Results Web Site](#)

Verify Configuration Manager Web Console

If you installed Configuration Manager Web Console on a different machine than the AdminStudio client tools, perform the following steps:



Task:***To verify the installation of Configuration Manager Web Console:***

1. On the machine where you installed the AdminStudio client tools, select **Options** on the **Tools** menu to open the **Options** dialog box.
2. Open the **Locations** tab.

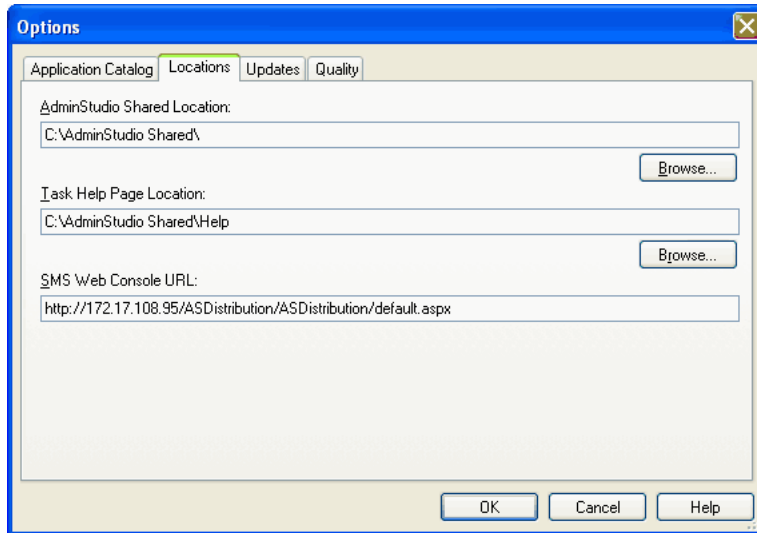
Chapter 3: Installing AdminStudio 11.0 Client Tools (Full Editions)

Installing Configuration Manager Web Console and Predeployment Test Web Components

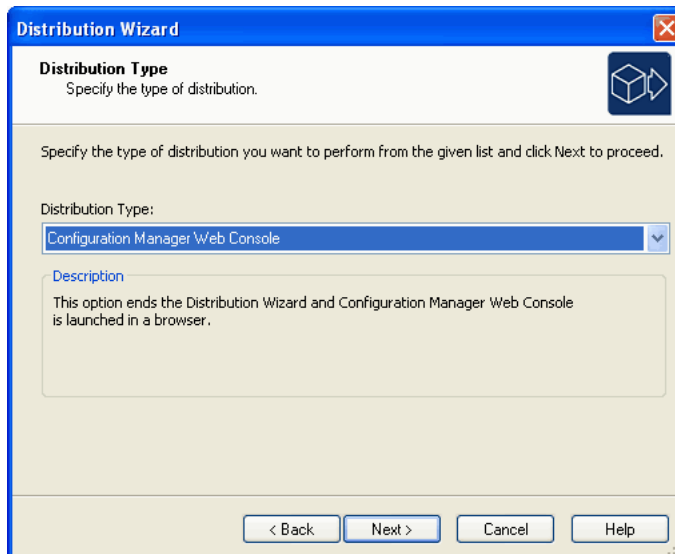
3. To configure Configuration Manager Web Console to with this machine, enter the following in the **Configuration Manager Web Console URL** field:

`http://IPADDRESS/ASDistribution/ASDistribution/default.aspx`

where IPADDRESS is the IP Address of the machine where you installed Configuration Manager Web Console.



4. Click **OK** to exit the **Options** dialog box.
5. Open the Distribution Wizard. The **Welcome Panel** of the Distribution Wizard opens.
6. Click **Next**. The **Distribution Type Panel** opens.



7. From the **Distribution Type** list, select **Configuration Manager Web Console** and click **Next**.
8. Verify that the Configuration Manager Web Console Web site opens.

Verify Predeployment Test Results Web Site

If you installed the Predeployment Test Results Web site on a different machine than the AdminStudio client tools, perform the following steps:



Task: *To verify the installation of the Predeployment Test Results Web site:*

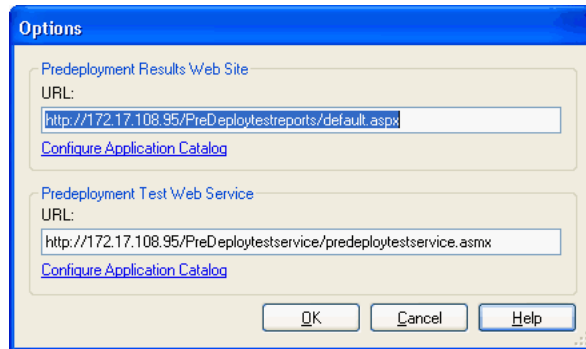
1. Open the Predeployment Test Tool, and select **Options** from the **Tools** menu.
2. In the **Predeployment Results Web Site URL** field, enter:

`http://IPADDRESS/PreDeployTestReports/default.aspx`

In the **Predeployment Test Web Service URL** field, enter:

`http://IPADDRESS/PreDeployTestService/predeploytestservice.asmx`

where IPADDRESS is the IP Address of the machine where you installed Predeployment Test Results Web site.



3. Click **OK** to close the **Options** dialog box.
4. On the Predeployment Test **Home** page, click **View Predeployment Test Results** and confirm that the site launches properly.

Upgrading an Existing Application Catalog to AdminStudio 11.x

When you attempt to open an AdminStudio 5.x or later SQL Server Application Catalog in the AdminStudio 11.0 client tools interface, you are prompted to upgrade the Application Catalog to the AdminStudio 11.x schema. This section explains this procedure.



Important • Before you upgrade the Application Catalog database from a previous AdminStudio version, it is strongly recommended that you create a backup of the original database. This is a standard precaution that is recommended to prevent possible data loss. If you are using the Application Catalog Software Repository feature, you may also want to make a backup copy of your Software Repository directories before upgrading.



Note • Microsoft Access databases are not supported in AdminStudio 8.x and later. Oracle databases are not supported in AdminStudio 9.01 and later.



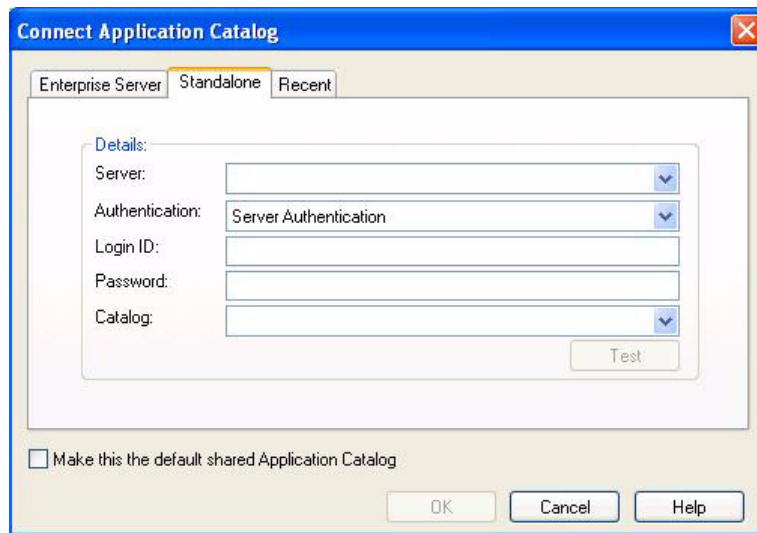
Note • The upgrade of AdminStudio 3.0, 3.01, and 3.5 databases is not supported by AdminStudio 7.0 or later. However, you can use a standalone utility that was included with AdminStudio 7.0 and 7.5 to manually upgrade them. See [Upgrading Pre-AdminStudio 5.0 Application Catalogs](#).



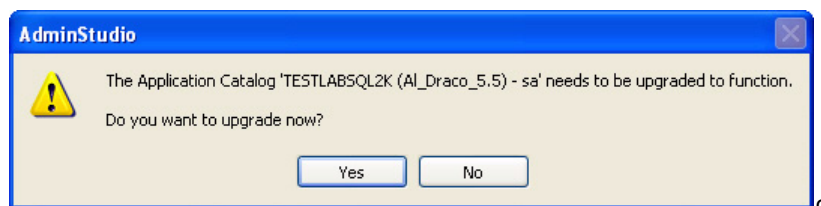
Task:

To upgrade an AdminStudio 5.x to 8.x Application Catalog to use the 11.x schema:

1. Install the AdminStudio 11.0 client tools, as described in [Installing the AdminStudio Client Tools](#).
2. Launch AdminStudio 11.0. The **Select Application Catalog** dialog box opens, displaying three tabs: **Enterprise Server**, **Standalone**, and **Recent**.



3. Click the **Standalone** tab. The **Standalone** tab opens, prompting you to enter database connection information.
4. If you want this Application Catalog to be the default shared Application Catalog used in your organization, select the corresponding option at the bottom of the dialog box.
5. Select the **Server** where the Application Catalog is stored.
6. Specify how the database server should verify the authenticity of the login—either using **Windows Authentication** or **Server Authentication**. If you selected **Server Authentication**, enter the appropriate **Login ID** and **Password**.
7. In the **Catalog** box, enter the name of the Application Catalog you want to open.
8. Click **Test** to test the connection to the database.
9. Click **OK**. A message opens prompting you to upgrade this database:

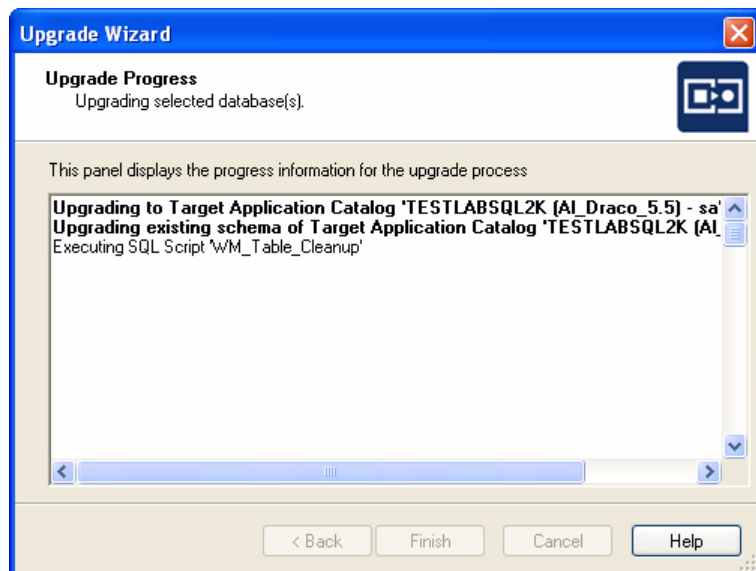


10. Click **Yes**. The **Welcome** panel of the Upgrade Wizard opens.

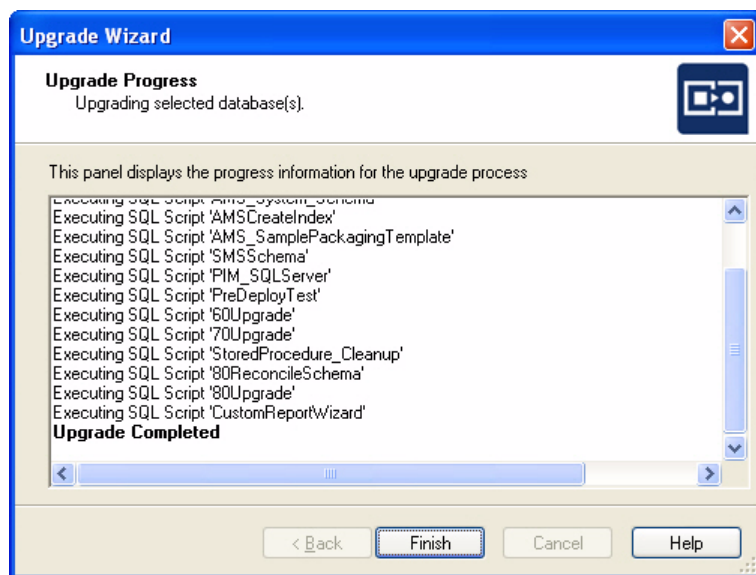
Chapter 3: Installing AdminStudio 11.0 Client Tools (Full Editions)

Upgrading an Existing Application Catalog to AdminStudio 11.x

11. Click **Next**. The **Upgrade Progress** panel opens and the upgrade begins.



When the upgrade is complete, the message **Upgrade Completed** is listed, and the **Finish** button is enabled.



12. Click **Finish**. The upgrade is now complete and all of your Application Catalog data has been preserved.



Note • When an SQL Server Application Catalog database is upgraded, the old tables are not dropped from the Application Catalog.

Upgrading Pre-AdminStudio 5.0 Application Catalogs

Pre-AdminStudio 5.0 Application Catalogs cannot be upgraded automatically by AdminStudio 7.0 or later.

However, you can upgrade them using the Legacy Upgrade Wizard, a standalone utility that was included with AdminStudio 7.0 and 7.5. The Legacy Upgrade Wizard utility is installed in the following directory:

`C:\Program Files\InstallShield\AdminStudio\7.x\Common\LegacyUpgradewizard.exe`

If you do not have a copy of AdminStudio 7.0 or 7.5 available to you, contact AdminStudio Technical Support.

Chapter 3: Installing AdminStudio 11.0 Client Tools (Full Editions)

Upgrading an Existing Application Catalog to AdminStudio 11.x

Installing AdminStudio 11.0 Limited Editions

This chapter explains how to install the AdminStudio Limited Editions:

- [Installing AdminStudio 11.0 ZENworks Edition](#)
- [Installing AdminStudio 11.0 Configuration Manager Edition](#)
- [Installing AdminStudio 11.0 Limited Edition for LANDesk Management Suite](#)

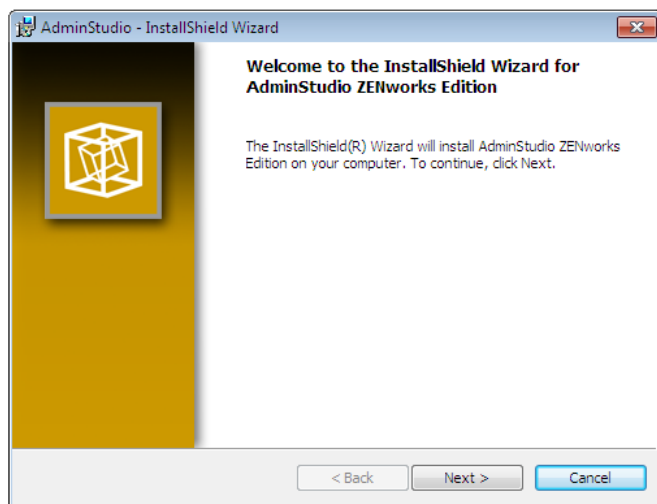
Installing AdminStudio 11.0 ZENworks Edition

To install AdminStudio 11.0 ZENworks Edition, perform the following steps.



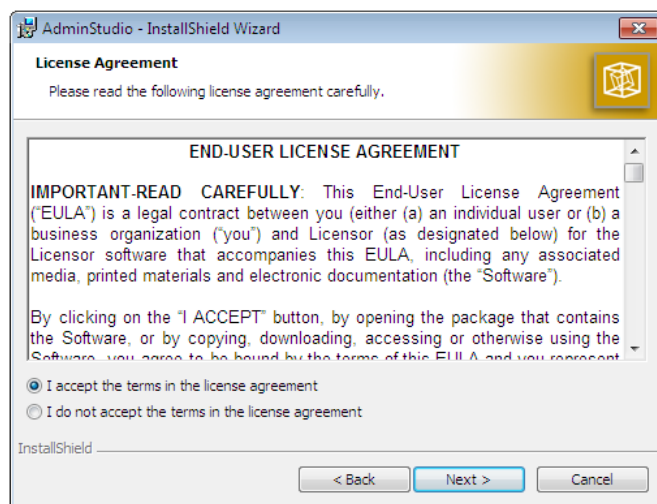
Task: *To install AdminStudio ZENworks Edition:*

1. Launch the AdminStudio ZENworks Edition installation program. After the installation files are extracted, the **Welcome** panel for the **InstallShield Wizard for AdminStudio ZENworks Edition** opens.

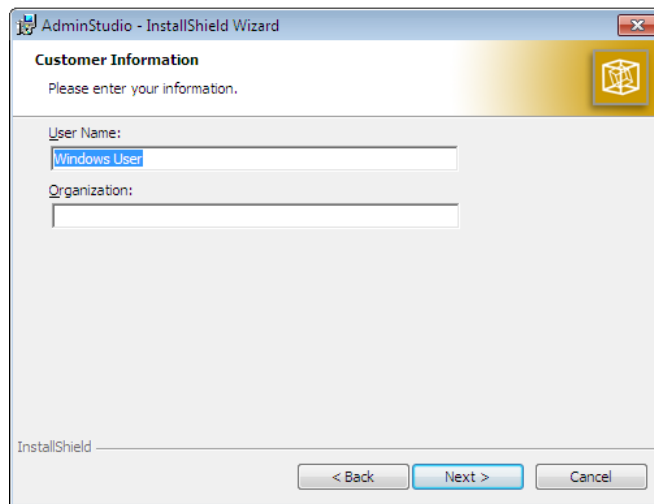


Note • Before the installer opens, you may be prompted to install Microsoft ReportViewer 2010.

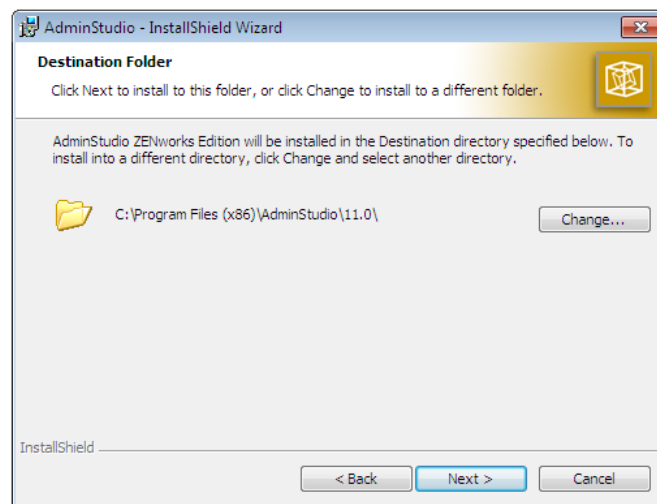
2. Click **Next**. The **License Agreement** panel opens.



3. Select the **I accept the terms in the license agreement** option and click **Next**. The **Customer Information** panel opens.



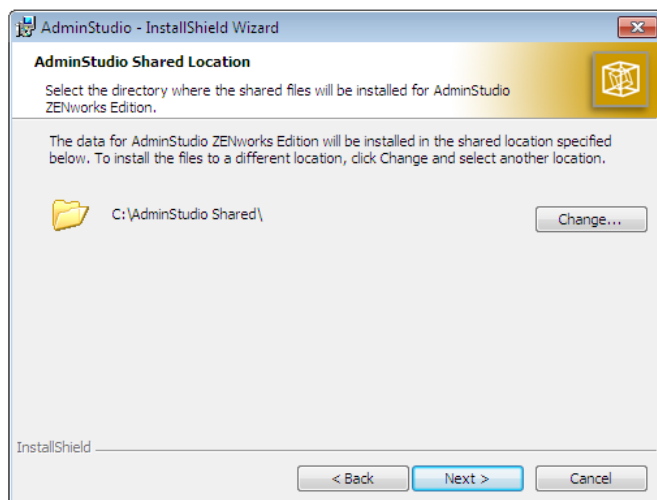
4. Enter a **User Name** and **Organization** name to identify this installation of AdminStudio, and click **Next** to continue. The **Destination Folder** panel opens.



Chapter 4: Installing AdminStudio 11.0 Limited Editions

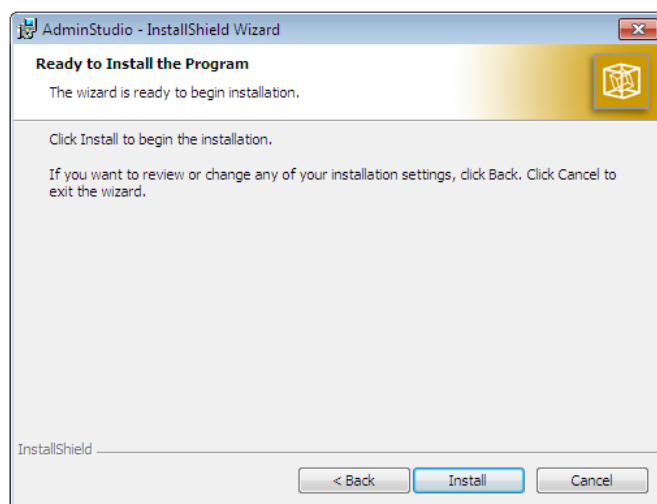
Installing AdminStudio 11.0 ZENworks Edition

5. If you want to install AdminStudio in the specified directory, click **Next**. If you want to select a different directory, click **Change**, select a new directory, and then click **Next**. The **AdminStudio Shared Location** panel opens.



The AdminStudio Shared directory contains shared information for repackaging and conflict identification, and other AdminStudio functions. If you are working in a team environment, the AdminStudio Shared directory should be set to a centralized network location, accessible by all AdminStudio users at your organization, rather than on your local machine.

6. Specify the location of your organization's AdminStudio Shared directory, and click **Next**. The **Ready to Install the Program** panel opens.



7. Click **Install** to begin the installation process.

8. When installation is complete, click **Finish** to exit the installer.
9. Then, proceed with one of the following:
 - [Activating AdminStudio ZENworks Edition](#)
 - [Evaluating AdminStudio Enterprise Edition Client Tools](#)

Installing AdminStudio 11.0 Configuration Manager Edition

To install AdminStudio 11.0 Configuration Manager Edition, perform the following steps.



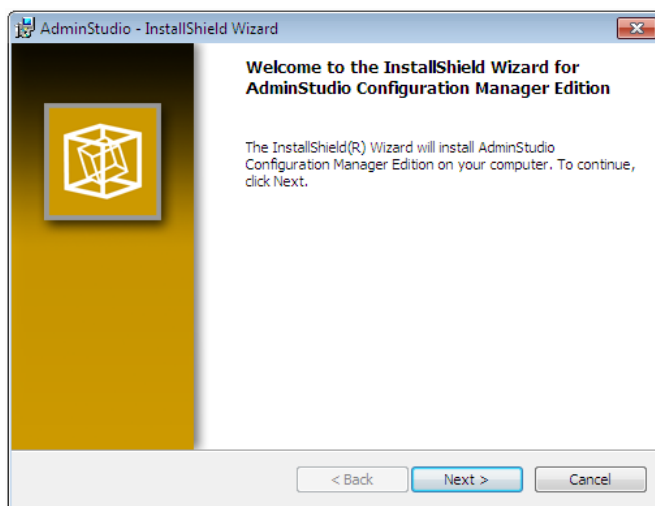
Note • AdminStudio Configuration Manager Web Console requires Microsoft IIS 6 or later. Therefore, prior to running this installation, make sure that Microsoft IIS is installed on the target machine. For instructions, see [Installing Internet Information Services \(IIS\)](#).



Task:

To install AdminStudio 11.0 Configuration Manager Edition:

1. Launch the AdminStudio 11.0 Configuration Manager Edition installation program. After the installation files are extracted, the **Welcome** panel of the AdminStudio Configuration Manager Edition installer opens.

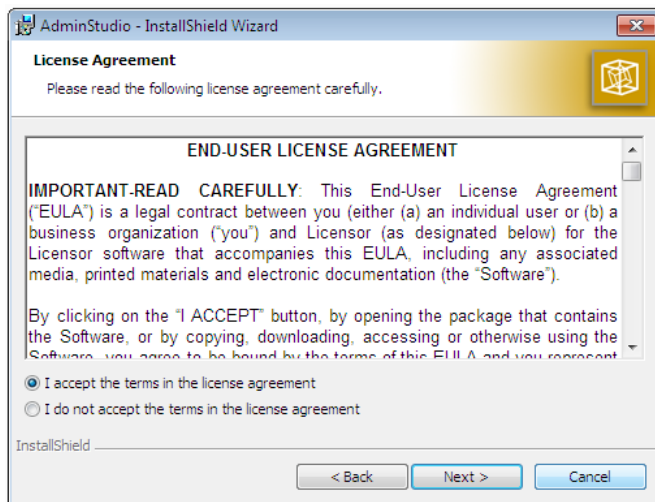


Note • Before the installer opens, you may be prompted to install Microsoft ReportViewer 2010.

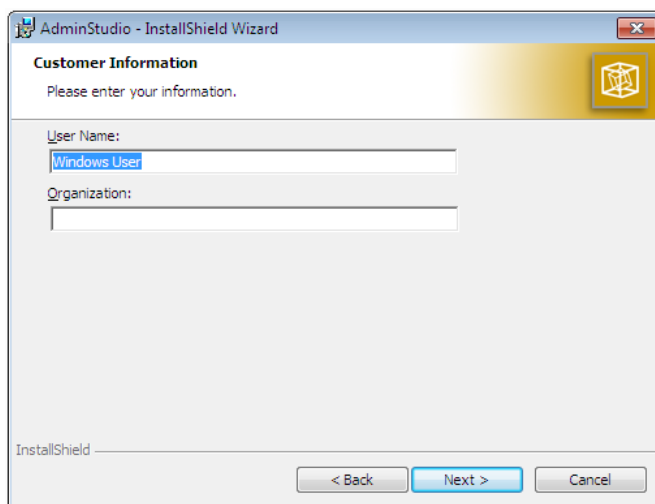
Chapter 4: Installing AdminStudio 11.0 Limited Editions

Installing AdminStudio 11.0 Configuration Manager Edition

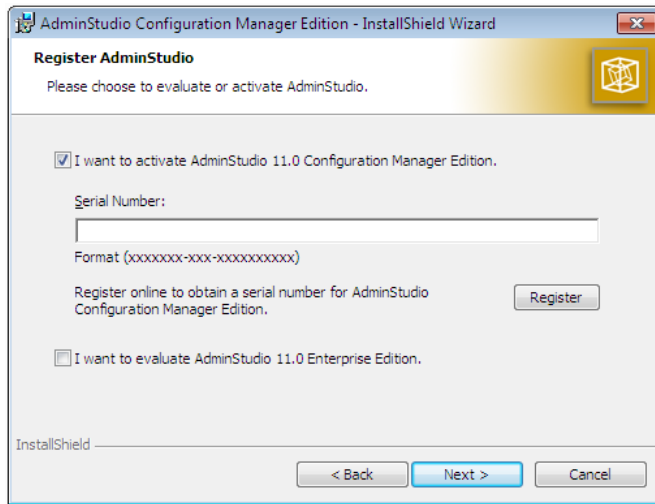
2. Click **Next**. The **License Agreement** panel opens.



3. Select the **I accept the terms in the license agreement** option and click **Next**. The **Customer Information** panel opens.



4. Enter a **User Name** and **Organization** name to identify this installation of AdminStudio, and click **Next** to continue. The **Register AdminStudio** panel opens.



5. On the **Register AdminStudio** panel, you can choose to either activate AdminStudio Configuration Manager Edition or to evaluate the AdminStudio Enterprise Edition client tools. Do one of the following:
 - **Activate**—To activate this product, select the **I want to activate AdminStudio 11.0 Configuration Manager Edition** option and enter the **Serial Number** that you received when you registered. If you have not yet registered the product, click **Register** to proceed with registration and obtain a Serial Number.



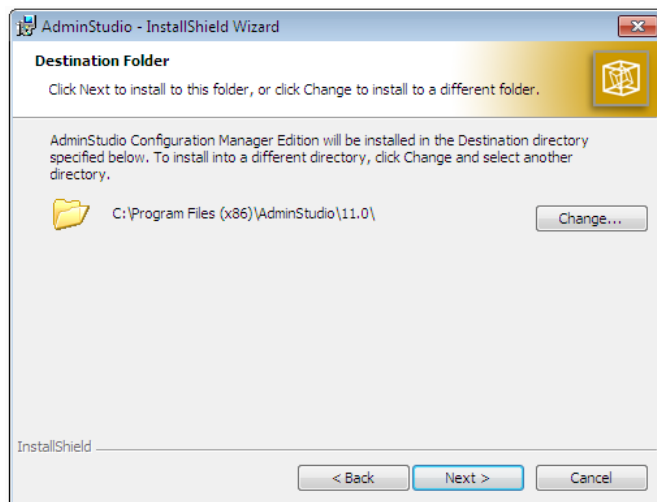
Note • If you enter an AdminStudio Configuration Manager Edition Serial Number but activation is not successful, see [Activation Troubleshooting](#) for possible solutions.

- **Evaluate**—To evaluate the AdminStudio Enterprise Edition client tools, as described in [Evaluating AdminStudio](#), select the **I want to evaluate AdminStudio 11.0 Enterprise Edition** option.

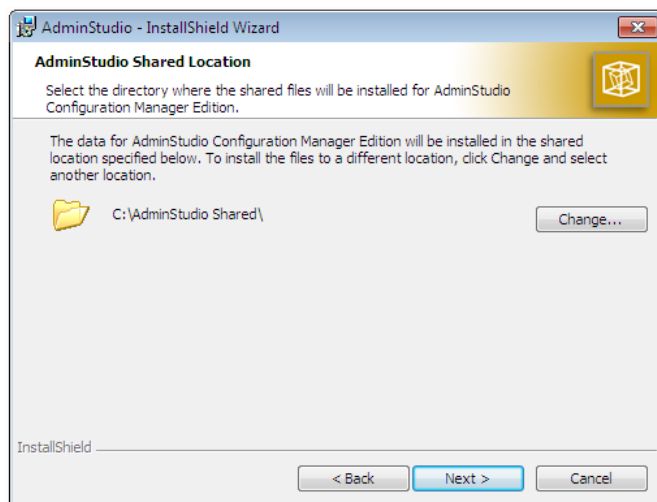
Chapter 4: Installing AdminStudio 11.0 Limited Editions

Installing AdminStudio 11.0 Configuration Manager Edition

6. Click **Next**. The **Destination Folder** panel opens.

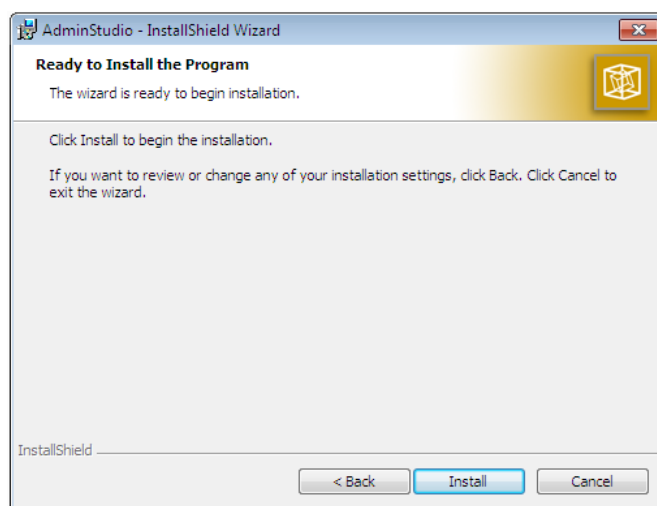


7. If you want to install AdminStudio in the specified directory, click **Next**. If you want to select a different directory, click **Change**, select a new directory, and then click **Next**. The **AdminStudio Shared Location** panel opens.



The AdminStudio Shared directory contains shared information for repackaging and conflict identification, and other AdminStudio functions. If you are working in a team environment, the AdminStudio Shared directory should be set to a centralized network location, accessible by all AdminStudio users at your organization, rather than on your local machine.

8. Specify the location of your organization's AdminStudio Shared directory, and click **Next**. The **Ready to Install the Program** panel opens.



Note • AdminStudio Configuration Manager Web Console requires Microsoft IIS 6 or later. If the IIS / .NET framework has not been installed on this machine, the following message will be displayed on the **Ready to Install the Program** panel:

Configuration Manager Web Console will not be installed on the machine because IIS/.NET framework is not installed on the machine.

If you would like to use Configuration Manager Web Console, install Microsoft IIS on the target machine, as described in [Installing Internet Information Services \(IIS\)](#), and rerun this installation.

9. Click **Install** to begin the installation process. When installation is complete, the **Completed** panel opens.
10. Click **Finish**. If you have not yet registered AdminStudio Configuration Manager Edition and received a Serial Number, you will be prompted to do so.
 - If you chose to activate your product on the **Register AdminStudio** panel, you can now begin using AdminStudio Configuration Manager Edition.
 - If you chose to evaluate AdminStudio, you can now begin using the AdminStudio Enterprise Edition client tools for a period of 21 days. See [Evaluating AdminStudio](#) for more information.

Installing AdminStudio 11.0 Limited Edition for LANDesk Management Suite

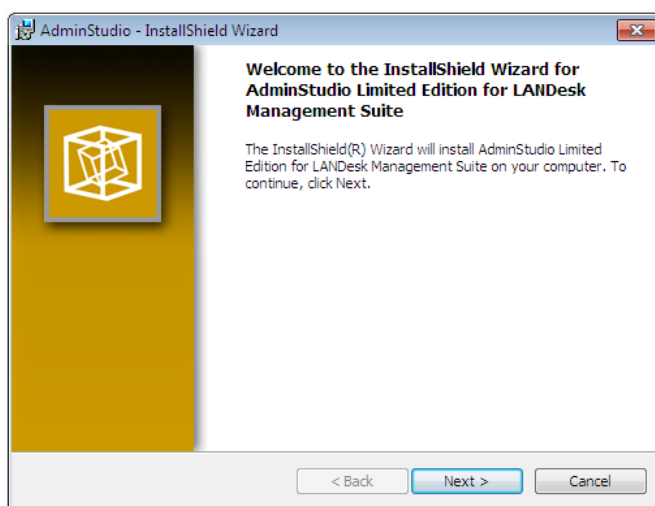
To install AdminStudio 11.0 Limited Edition for LANDesk Management Suite, perform the following steps.



Task:

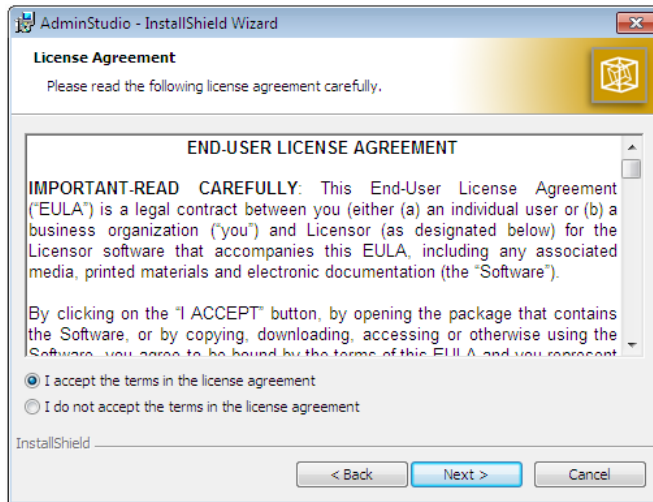
To install AdminStudio 11.0 Limited Edition for LANDesk Management Suite:

1. Launch the AdminStudio 11.0 Limited Edition for LANDesk Management Suite installation program. After the installation files are extracted, the InstallShield Wizard opens.

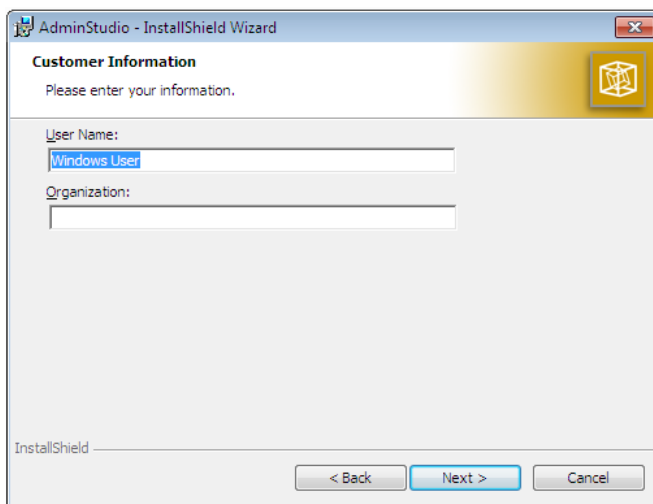


Note • Before the installer opens, you may be prompted to install Microsoft ReportViewer 2010.

2. Click **Next**. The **License Agreement** panel opens.



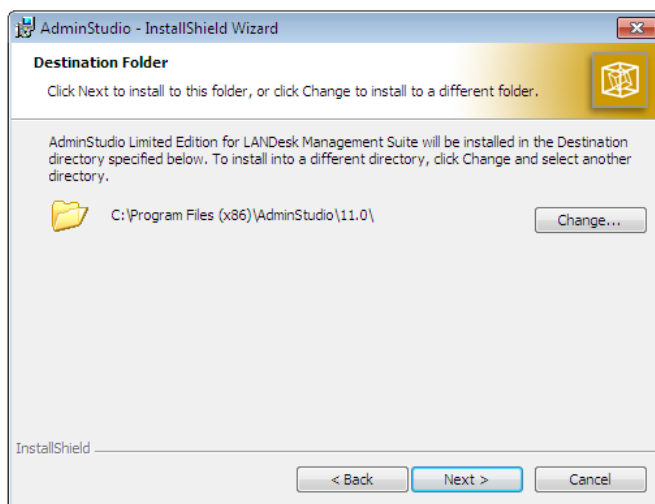
3. Select the **I accept the terms in the license agreement** option and click **Next**. The **Customer Information** panel opens.



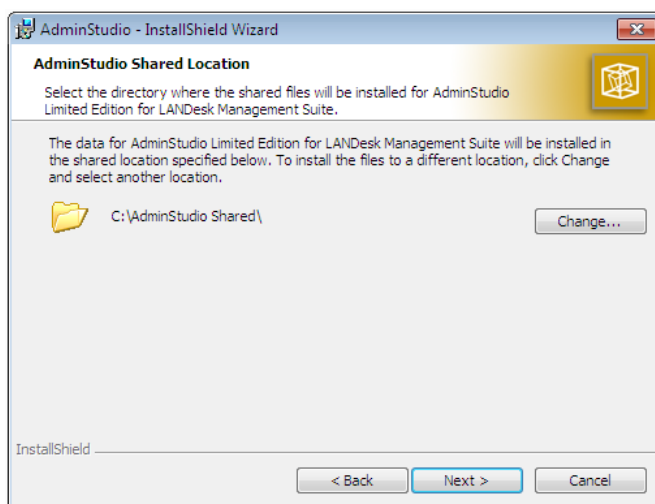
Chapter 4: Installing AdminStudio 11.0 Limited Editions

Installing AdminStudio 11.0 Limited Edition for LANDesk Management Suite

4. Enter a **User Name** and **Organization** name to identify this installation of AdminStudio, and click **Next** to continue. The **Destination Folder** panel opens.

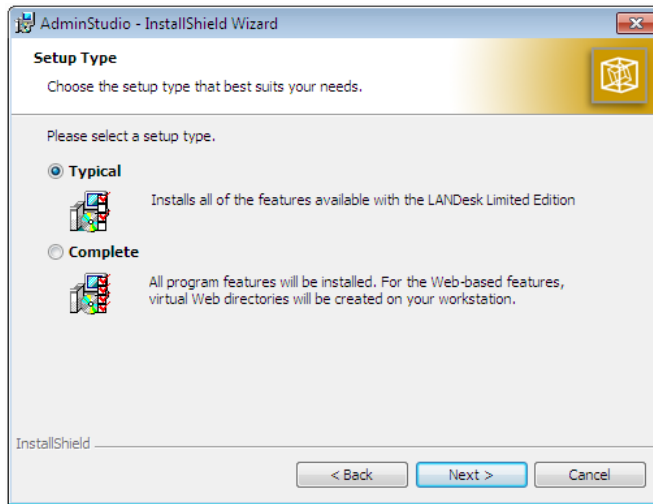


5. If you want to install AdminStudio in the specified directory, click **Next**. If you want to select a different directory, click **Change**, select a new directory, and then click **Next**. The **AdminStudio Shared Location** panel opens.



The AdminStudio Shared directory contains shared information for repackaging and conflict identification, and other AdminStudio functions. If you are working in a team environment, the AdminStudio Shared directory should be set to a centralized network location, accessible by all AdminStudio users at your organization, rather than on your local machine.

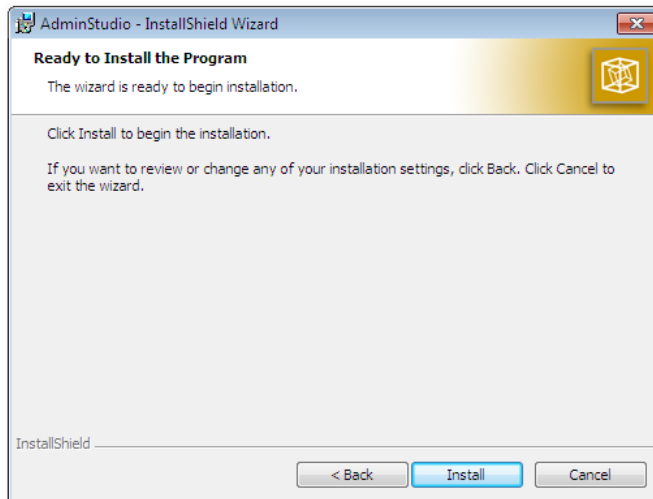
6. Specify the location of your organization's AdminStudio Shared directory, and click **Next**. The **Setup Type** panel opens:



7. You can choose to evaluate the AdminStudio Limited Edition for LANDesk Management Suite for 45 days. The choice that you make on the **Setup Type** panel affects the tools that are available to you if you choose to evaluate the product. Select one of the following options and then click **Next**:

- **Typical**—Choose this option to install only the tools included in this Limited Edition.
- **Complete**—Choose this option to install all of the AdminStudio Enterprise Edition client tools, which enables you to evaluate these tools during your 45-day evaluation period. After the evaluation period ends and you enter your AdminStudio Limited Edition for LANDesk Management Suite serial number, only those tools included in the Limited Edition will be available to you.

The **Ready to Install the Program** panel opens.



8. Click **Install** to begin the installation process. When installation is complete, the **Completed** panel opens.

Chapter 4: Installing AdminStudio 11.0 Limited Editions

Installing AdminStudio 11.0 Limited Edition for LANDesk Management Suite



Note • Several AdminStudio Enterprise Edition client tools require Microsoft IIS 6 or later. If you chose **Complete** on the **Setup Type** panel and the IIS / .NET framework has not already been installed on this machine, an error message will be displayed after you click the **Install** button. If this message appears, do one of the following:

- **To install AdminStudio Enterprise Edition tools**—Cancel this installation, install the IIS/.NET framework as described in [Installing Internet Information Services \(IIS\)](#), and then restart the installer (again selecting **Complete** on the **Setup Type** panel).
- **To install Limited Edition for LANDesk Management Suite tools**—Click the **Back** button to return to the **Setup Type** panel and select **Typical** instead of **Complete**.

9. Click **Finish**.

10. Proceed with one of the following:

- [Registering and Activating AdminStudio Limited Edition for LANDesk Management Suite](#)
- [Evaluating AdminStudio](#)

Configuring Compatibility Solver

Before you can start using Compatibility Solver—in Evaluation mode or as an activated product—you need to first configure Compatibility Solver by creating a new Compatibility Solver database and loading report upgrades.

- [Creating a Compatibility Solver Database](#)
- [Downloading and Importing Reports \(Plug-ins\)](#)
- [Importing and Loading Packages](#)
- [Running Reports](#)

Creating a Compatibility Solver Database

The first time you launch Compatibility Solver, you will be prompted to create a new Compatibility Solver database, which will store test results. To create a new database, perform the following steps:



Task: *To create a Compatibility Solver database:*

1. Launch Compatibility Solver. The **Create Compatibility Solver Database** dialog box opens:

2. In the **Server Name** field, enter the name of the SQL Server or SQL Server Express database server that you want to connect to.

SQL Server and SQL Server Express may use different instance names for the database server. The server name that you enter could be the computer name followed by the instance of SQL Server, for example:

YourComputerName\SQLEXPRESS

localhost\SQLEXPRESS

IPAddress\SQLEXPRESS

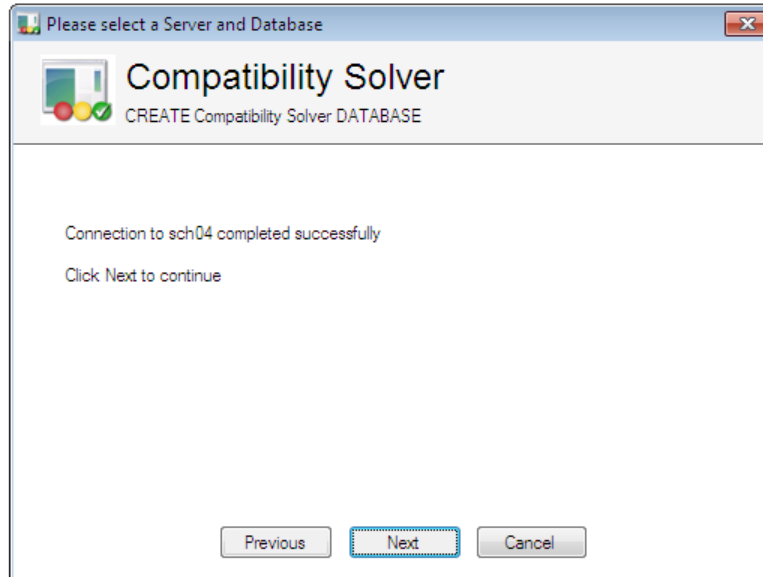
.\SQLEXPRESS

SQLSERVERNAME (if using the full version of SQL Server 2005 or 2008)

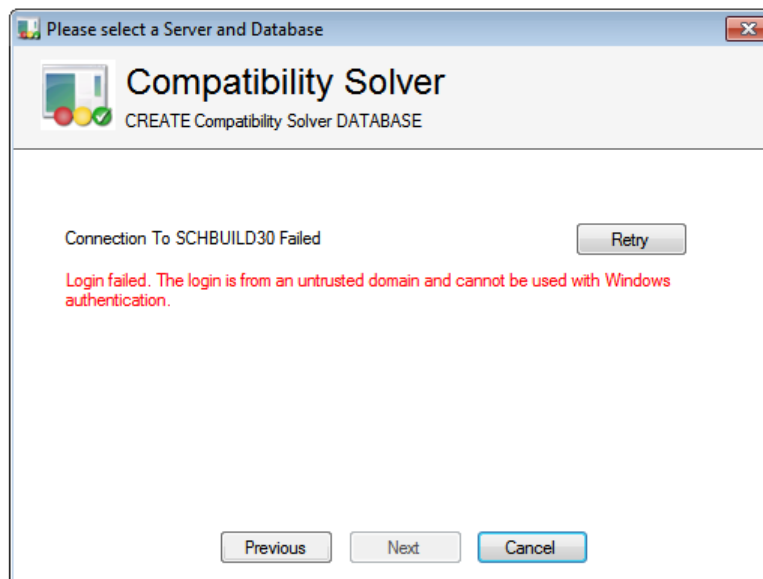
3. Specify the type of database authentication you want to use by doing one of the following:
 - **Windows authentication**—To log on to this server using your Windows credentials, leave the **Use Windows Security** option selected.
 - **Server authentication**—To use SQL Server authentication, clear the selection of the **Use Windows Security** option and enter the required security credentials in the **User Name** and **Password** fields.

4. Click **Next**.

- **Connection successful**—If the database server can be found, the server dialog box informs you that the connection completed successfully.



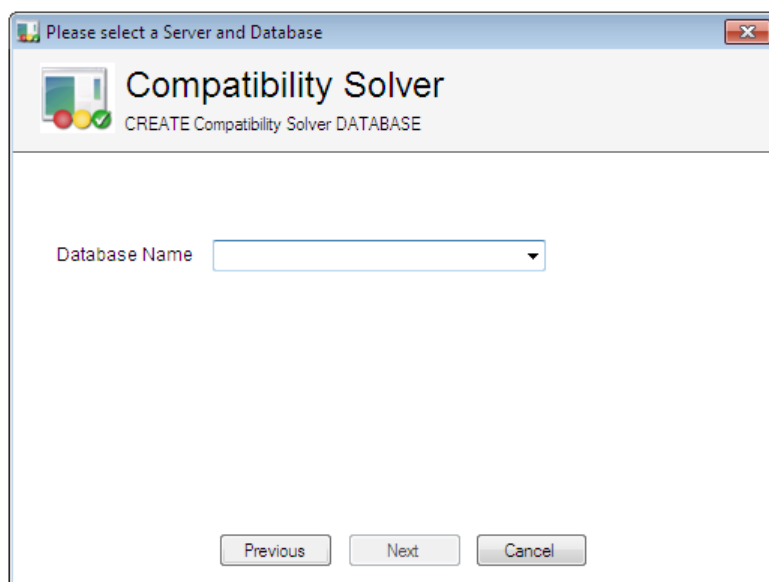
- **Connection failed**—If the database server could not be found, an error message will be displayed. Click **Previous** to enter a different server/instance name.



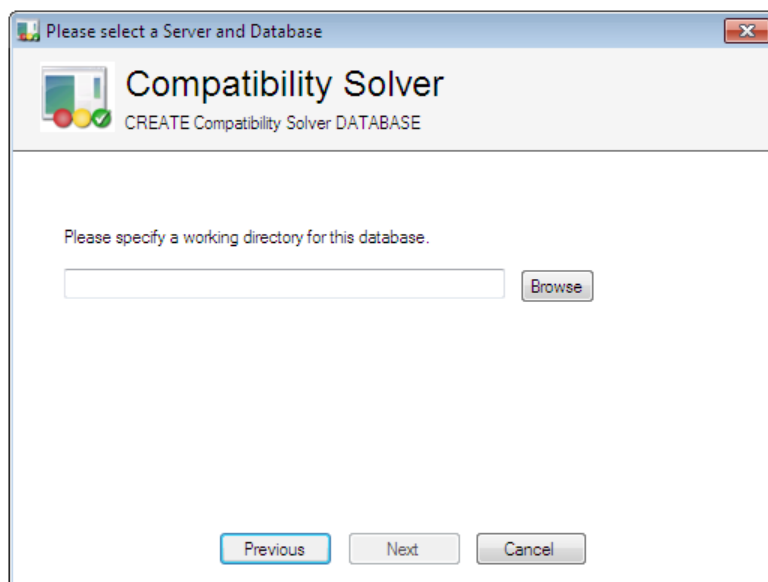
Chapter 5: Configuring Compatibility Solver

Creating a Compatibility Solver Database

5. Once a successful connection has been established to the database server, click **Next**. You are prompted to enter a name for the new database.



6. Enter a suitable database name and click **Next**. You are prompted to specify a working directory for this database.



7. Click **Browse** and select a working directory. The working directory is not where the actual database will be stored; it is where the working files created and used while Compatibility Solver is running are stored.
 - To create a new directory, click **Make New Folder** on the **Browse for Folder** dialog box.
 - It is recommended that the working directory have a folder structure similar to:
`[DriveLetter]:\CompatibilitySolverWorking\[DatabaseName]`

- If your Compatibility Solver database is going to be shared by other people, the working directory should be in a common location where it can be accessed by all, and should be mapped to the same drive letter by everyone using it.
8. After specifying a suitable working directory, click **Next**. The database is created. When the database has been created successfully, message is displayed.



9. Click **Finish**. Compatibility Solver's main screen opens.

You are now ready to download and import reports/plugin-ins into the Compatibility Solver database, as described in [Downloading and Importing Reports \(Plug-ins\)](#).

Downloading and Importing Reports (Plug-ins)

All Compatibility Solver reports (and associated plug-ins) are made available through the license and update manager included in Compatibility Solver, which is accessed on the **Upgrade** tab of the **Options** dialog box.

Once you have created a Compatibility Solver database, you will see a number of updates available on the **Upgrade** tab of the **Options** dialog box, which is opened by clicking the **Options** button in the Compatibility Solver toolbar:

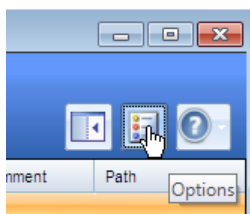
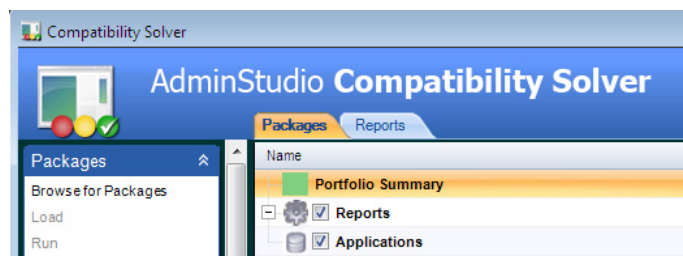


Figure 5-1: Options Button in Compatibility Solver Toolbar



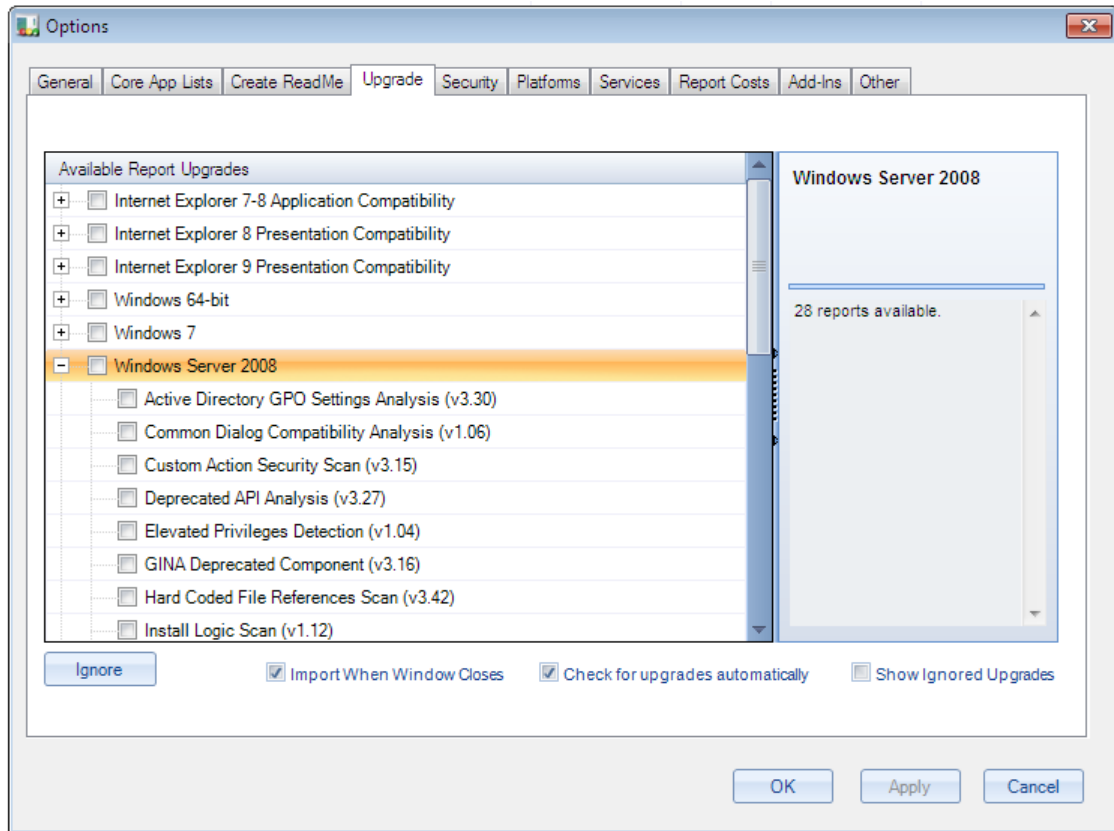
Task: *To download and import Compatibility Solver reports (plug-ins):*

1. Open Compatibility Solver and locate the **Reports** icon on the **Packages** tab. When you have just created a new Compatibility Solver database, no reports are listed:



2. On the Compatibility Solver toolbar, click the **Options** button. The **Options** dialog box opens.

3. Open the **Upgrade** tab.



The available report upgrades are listed, grouped by report type, such as:

- **Internet Explorer 7-8 Application Compatibility**
- **Internet Explorer 8 Presentation Compatibility**
- **Internet Explorer 9 Presentation Compatibility**
- **Windows 64-bit**
- **Windows 7**
- **Windows Server 2008**



Important • The **Upgrade** tab lists the reports (or plug-ins) that are available for download. The list of available reports will be determined by your license details and what is already installed on your machine. If you purchase the optional Standalone Web Application Compatibility Pack add-on, additional plug-ins that can load and analyze website content, URLs, source folders and Web-integrated applications for compatibility with Internet Explorer will also be available.

4. Select the checkboxes next to the reports or groups of reports that you want to download.

Chapter 5: Configuring Compatibility Solver

Downloading and Importing Reports (Plug-ins)

5. To specify that you want all of the selected reports/plugin-ins to load automatically when you click the **OK** button, select the **Import When Window Closes** option.



Note • If you do not select the **Import When Window Closes** option, the plug-ins will be listed on the Compatibility Solver interface, but will not be loaded. To use these plug-ins, you would then need to manually select each listed plug-in and click **Load**.

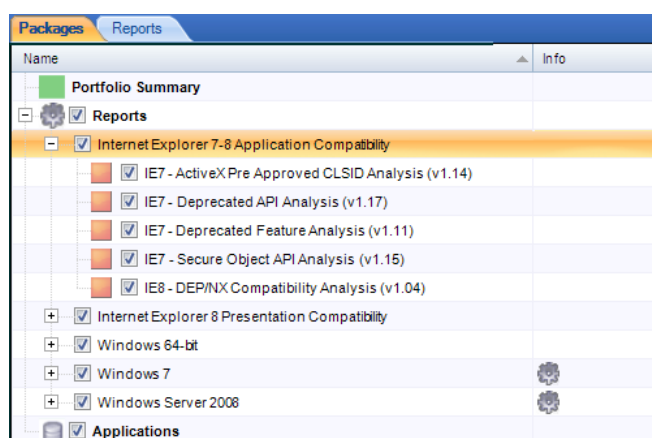


Note • Selecting the **Check for upgrades automatically** option on the **Upgrade** tab will cause Compatibility Solver to check with the Compatibility Solver server on an hourly basis to see if any new or updated reports are available. If any are available, this will be indicated under **Available Upgrades** in the **Summary** control panel on the left side of the Compatibility Solver interface.

6. Click **OK** button. All of the selected reports/plugin-ins will then be automatically downloaded. Loading status is shown in the **Info** column of the Compatibility Solver interface:

Packages		Reports	
Name			Info
Portfolio Summary			
<input checked="" type="checkbox"/>	Reports		
<input checked="" type="checkbox"/>	Applications		
<input checked="" type="checkbox"/>	Internet Explorer 7-8 Application Compatibility - IE7 - ActiveX Pre Ap	Completed	
<input checked="" type="checkbox"/>	Internet Explorer 7-8 Application Compatibility - IE7 - Deprecated Ai	Completed	
<input checked="" type="checkbox"/>	Internet Explorer 7-8 Application Compatibility - IE7 - Deprecated Fi	Completed	
<input checked="" type="checkbox"/>	Internet Explorer 7-8 Application Compatibility - IE7 - Secure Object		
<input checked="" type="checkbox"/>	Internet Explorer 7-8 Application Compatibility - IE8 - DEP/INX Comp	Completed	
<input checked="" type="checkbox"/>	Internet Explorer 8 Presentation Compatibility - Application Protoc	Completed	
<input checked="" type="checkbox"/>	Internet Explorer 8 Presentation Compatibility - Browser Version Ct	Completed	
<input checked="" type="checkbox"/>	Internet Explorer 8 Presentation Compatibility - Case Sensitivity Ans	Completed	
<input checked="" type="checkbox"/>	Internet Explorer 8 Presentation Compatibility - Character Encoding	50%	
<input checked="" type="checkbox"/>	Internet Explorer 8 Presentation Compatibility - Code Page Detectio	50%	
<input checked="" type="checkbox"/>	Internet Explorer 8 Presentation Compatibility - Database Generato		
<input checked="" type="checkbox"/>	Internet Explorer 8 Presentation Compatibility - Deprecated Functio		

When Compatibility Solver adds the reports, they are first listed under **Applications**. Once all of the reports are loaded, Compatibility Solver moves them under **Reports**.



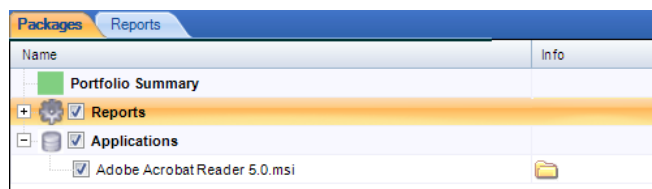
Importing and Loading Packages

To test a package with Compatibility Solver, you first need to import the package into Compatibility Solver, and then load it into the database.



Task: *To import and load a package into Compatibility Solver:*

1. In the **Packages** control panel on the left side of the Compatibility Solver interface, click **Browse for Packages**. The **Open** dialog box opens.
2. Select an .msi or .msm file to import. The package is now listed under **Applications** on the Compatibility Solver interface, with a folder icon in the **Info** column, which indicates that the package has been imported but not loaded. In this example, Adobe Acrobat Reader 5.0.msi has been imported:





Note • You can also import a package into Compatibility Solver using drag-and-drop.

3. Make sure that the package you just imported is selected, and then click **Load** in the **Packages** control panel. The selected package is loaded. Progress is shown in the **Info** column. When loading is complete, several icons are listed in the Info column.



In this example, the following icons are displayed:

Name	Icon	Description
Checked Out		<p>Indicates that the package is checked out to the current user.</p> <ul style="list-style-type: none">• A package is checked out automatically to the user who imports it into the database if the Checkout Packages Automatically option under Package Load/Fixes on the General tab of the Options dialog box is selected.• If this icon is not visible, it indicates that the package is checked in and although it can be reported on, it cannot be remediated automatically.• You can check the package in by selecting it and clicking Checkin on the context menu.
Dependencies Loaded		<p>Indicates that the package has been checked for its dependencies.</p> <p>Packages are automatically scanned for dependencies when they are loaded if the Include Dependency Analysis option on the General tab of the Options dialog box is selected.</p>

The package is now loaded and ready to be tested, as described in [Running Reports](#).

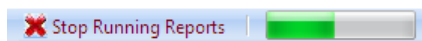
Running Reports

After a package has been imported and loaded into the Compatibility Solver database, you can now test it using the report plug-ins you have imported.



Task: *To test a package and review report results:*

1. On the Compatibility Solver **Packages** tab under **Applications**, make sure that all of the packages that you want to test are selected.
2. Under **Reports**, make sure that all reports that you want to run are selected.
3. In the **Packages** control panel, click **Run**. Reports are run and progress is shown in the status bar at the bottom of the interface:



When the reports have finished running, test results are listed under each test package:

		Applications			
		Adobe Acrobat Reader 5.0		103	29
		Internet Explorer 7-8 Application Compatibility		132	
		IE7 - ActiveXPre Approved CLSID Analysis		29	
		IE7 - Secure Object API Analysis		103	
		DemoPlayer		4	
		Internet Explorer 7-8 Application Compatibility		4	
		IE7 - Secure Object API Analysis		4	
		Call reference to a Deprecated API (IAT). File: demo32.exe,			Manual Update R...
		Call reference to a Deprecated API (IAT). File: demo32.exe,			Manual Update R...
		Call reference to a Deprecated API (IAT). File: demo32.exe			Manual Update R...
		Call reference to a Deprecated API (IAT). File: demo32.exe,			Manual Update R...



Note • For more information on reviewing test results and reports, see the [Running Reports](#) help topic in the Compatibility Solver Help Library.

Chapter 5: Configuring Compatibility Solver

Running Reports

Activating AdminStudio

AdminStudio product activation requires you to obtain a valid serial number for one of the Full Editions (Standard, Professional, or Enterprise) or Limited Editions (ZENworks Limited Edition, Configuration Manager Limited Edition, Limited Edition for LANDesk Management Suite) of AdminStudio, and, in some cases, to register that serial number on the AdminStudio Web site. This chapter includes the following topics to assist you with activating your product:

- [About Activation](#)
- [Activating AdminStudio \(Full Edition\) Upon Initial Startup](#)
- [Activating AdminStudio ZENworks Edition](#)
- [Registering and Activating AdminStudio Limited Edition for LANDesk Management Suite](#)
- [Activating AdminStudio Configuration Manager Edition](#)
- [Activation Troubleshooting](#)



Note • The length of the evaluation period of AdminStudio varies by Edition:

- **Full Editions, Configuration Manager Limited Edition**—You can choose to evaluate the AdminStudio Enterprise Edition client tools for 21 days without entering a serial number and activating the product.
- **Limited Edition for ZENworks Management Suite**—You can choose to evaluate the AdminStudio Enterprise Edition client tools for 60 days without entering a serial number and activating the product.
- **Limited Edition for LANDesk Management Suite**—You can choose to evaluate the AdminStudio client tools for 45 days prior to activating it. The tools available to you during the evaluation mode depends upon the selection you made on the **Setup Type** panel of the AdminStudio Limited Edition for LANDesk Management Suite installation: **Typical** or **Complete**.

See [Evaluating AdminStudio](#) for more information.

About Activation

AdminStudio product activation requires you to obtain a valid serial number for one of the Editions of AdminStudio, and, in some cases, to register that serial number on the AdminStudio Web site.

- [About Serial Numbers](#)
- [About Registration](#)

When you launch AdminStudio or one of its tools for the first time, you are notified that you are using a time-limited trial version, and you are given the opportunity to evaluate the product or to activate it by entering a valid Serial Number for an AdminStudio Edition.

- **You have purchased AdminStudio**—If you have purchased AdminStudio and have received a serial number (for the Standard, Professional, or Enterprise Edition), select **Activate or Purchase AdminStudio** and click **Next**. See [Activating AdminStudio \(Full Edition\) Upon Initial Startup](#).
- **You want to evaluate AdminStudio**—If you have not yet purchased AdminStudio, but want to evaluate it for 21 days, select **Continue to Evaluate AdminStudio** and click **Next** (or just wait ten seconds). The product will launch. See [Evaluating AdminStudio](#) for more information.



Note • If you want to evaluate the AdminStudio Enterprise Server Web tools (Job Manager, Report Center, Security Console), you need to obtain an Enterprise Server serial number from an AdminStudio Sales Representative. See [Evaluating the AdminStudio Enterprise Server Web Tools](#).

About Serial Numbers

After you purchase AdminStudio, the way you obtain a serial number depends upon whether you downloaded the application software or whether you obtained a physical copy of the application software on a DVD:

- **Downloaded**—If you purchased and downloaded your software from the Flexera Software Web site, you should have received your serial number via email.
- **Physical Media**—If you purchased a physical copy of the software from Flexera Software or a reseller, your serial number is located on the adhesive label on the back of your product CD case.

If you cannot find your serial number, call your AdminStudio customer service representative.

About Registration

Whether or not you need to register your serial number to activate your product depends upon whether you purchased the software directly from Flexera Software, or have purchased it from a reseller:

- **If you have purchased your software directly from Flexera Software**, you do not need to register your serial number to activate your product. When you launch AdminStudio for the first time and enter your serial number, your product is activated via the Internet (online activation).
- **If you purchased your software from a reseller** (not directly from Flexera Software), you must register your serial number before you can activate your product.

Activating AdminStudio (Full Edition) Upon Initial Startup

The steps you take to activate AdminStudio the first time you open it depend upon whether you purchased AdminStudio directly from Flexera Software or from a Reseller.

- [Activating AdminStudio Purchased from Flexera Software](#)
- [Activating AdminStudio Purchased from a Reseller](#)

Activating AdminStudio Purchased from Flexera Software

If you purchased AdminStudio directly from Flexera Software and want to activate it upon initial start up, perform the following steps.



Task: *To register and activate AdminStudio:*

1. Locate your serial number:
 - **Downloaded**—If you purchased and downloaded your software from the Flexera Software Web site, you should have received your serial number via email.
 - **Physical Media**—If you purchased a physical copy, your serial number is located on the adhesive label on the back of your product CD case.
2. Launch AdminStudio. A dialog box opens, stating that you are using a time-limited trial version.
3. Select **Activate or Purchase AdminStudio** and click **Next**. You are prompted to **Enter Your Serial Number**.
4. Enter the serial number of the edition you purchased and click the **Activate** button. After a few seconds, you will receive a message that activation was successful.

Chapter 6: Activating AdminStudio

Activating AdminStudio (Full Edition) Upon Initial Startup

5. Click **Finish**. AdminStudio will launch.

Your product would then be fully activated and you would be able to use all of the tools that are included in the Edition of AdminStudio that you purchased.



Note • If you do not have an online connection, you can activate your product via email. See [Email Activation](#).



Note • For information on how to configure AdminStudio to get license information from a FLEXnet license server, see the *FLEXnet License Server for AdminStudio Installation Guide*.



Note • When you launch AdminStudio for the first time, you may be prompted to install the AdminStudio Service Packs. Follow the prompts to install all recommended Service Packs.

Activating AdminStudio Purchased from a Reseller

If you purchased AdminStudio from a reseller and want to activate it upon initial start up, perform the following steps.



Task: To register and activate AdminStudio:

1. Locate the serial number that came with your software, which is located on the adhesive label on the back of your product CD case.
2. Open the Flexera Software [Registration Page](#) at the following address:
<http://shop.flexerasoftware.com/registration/serials.aspx>
The Flexera Software Registration/Activation Page opens.
3. Enter your Product serial number in the **Serial Number** field and click **Continue to Next Step**.



Note • Serial numbers are CASE sensitive and do not require dashes.

4. Enter the requested information until the Registration process is complete.
5. Launch AdminStudio. A dialog box opens, stating that you are using a time-limited trial version.
6. Select **Activate or Purchase AdminStudio** and click **Next**. You are prompted to **Enter Your Serial Number**.
7. Enter the same serial number that you entered on the AdminStudio Registration page and click **Verify**. First, a message appears stating that the serial number is being verified, and then the message [Verification Complete](#) appears.

8. Click **Finish**. AdminStudio will launch.

Your product would then be fully activated and you would be able to use all of the tools that are included in the Edition of AdminStudio that you purchased.



Note • When you launch AdminStudio for the first time, you may be prompted to install the AdminStudio Service Packs. Follow the prompts to install all recommended Service Packs.



Note • If you do not have a online connection, you can activate your product via email. See [Email Activation](#).

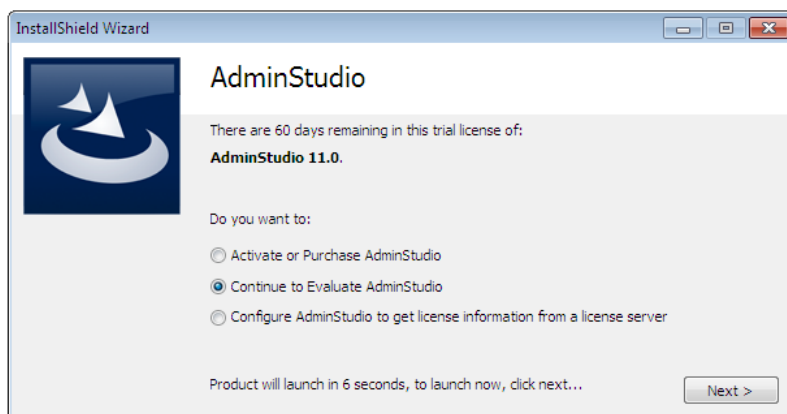
Activating AdminStudio ZENworks Edition

If you want to activate AdminStudio ZENworks Edition, perform the following steps.

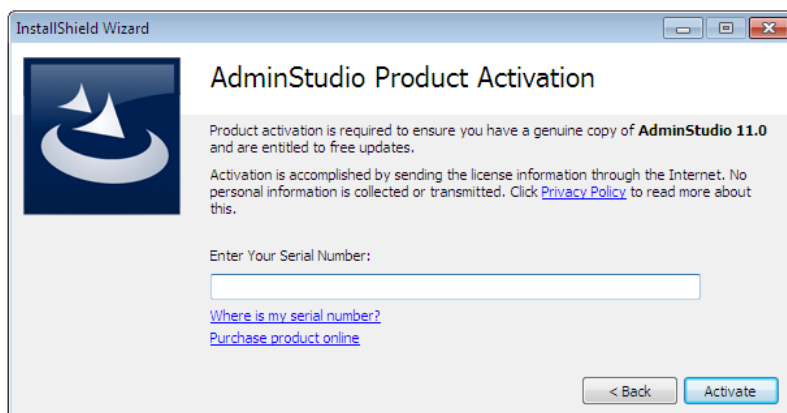


Task: *To activate your installation of AdminStudio ZENworks Edition:*

1. Launch AdminStudio ZENworks Edition. The following dialog box opens, prompting you to either activate or evaluate AdminStudio.



2. Select **Activate or Purchase AdminStudio** and click **Next**. The AdminStudio Product Activation dialog box opens, and you are prompted to **Enter Your Serial Number**.



3. Enter the serial number that you received from Novell and click **Activate**. First, a message appears stating that the serial number is being validated, and then the message **Activation Complete** appears. Your product would then be fully activated and you would be able to use all of the tools that are included in the AdminStudio ZENworks Edition that you have downloaded.



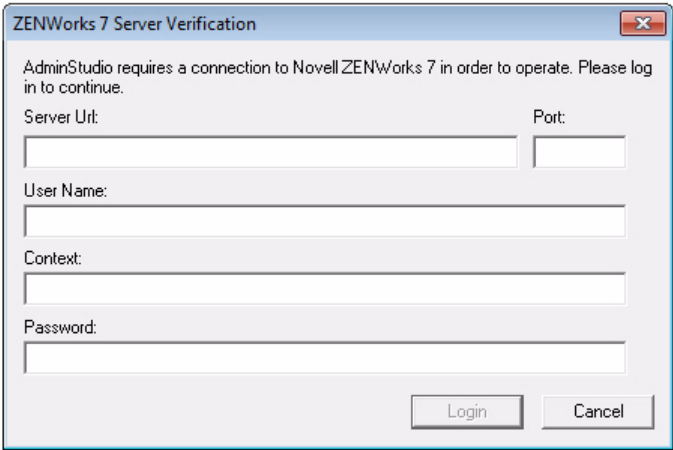
Note • If you do not have an online connection, you can activate your product via email. See [Email Activation](#).

4. Click **Finish**. AdminStudio launches. You will then be prompted to log in to a ZENworks eDirectory or a ZENworks Configuration Management server.



Note • Your organization should have previously installed the ZENworks server and provided you with the appropriate login credentials for that server.


- **AdminStudio ZENworks Edition for ZENworks 7 Users**—If you are activating AdminStudio ZENworks Edition for ZENworks 7, the **ZENWorks 7 Server Verification** dialog box opens:



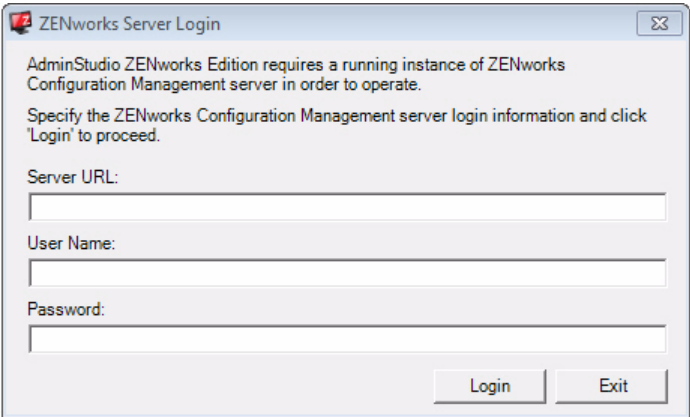
The dialog box is titled "ZENWorks 7 Server Verification". It contains the following fields and controls:

- Text: "AdminStudio requires a connection to Novell ZENWorks 7 in order to operate. Please log in to continue."
- Form fields: "Server Url:", "Port:", "User Name:", "Context:", "Password:"
- Buttons: "Login", "Cancel"

Enter the following information:


Field	Description
Server Url	Enter the IP address of your organization's ZENworks 7 server, such as: 111.22.33.444  Note • Do not include an <code>http://</code> or <code>https://</code> prefix.
Port	Enter the port of used for your ZENworks 7 Server installation. The default LDAP port for ZENworks 7 Server installation is 636 . However, if a different port was used, enter that port number here.
User Name	Enter a user name for this ZENworks 7 Server.
Context	Enter the context that was specified during the ZENworks 7 Server installation. The context identifies where your ZENworks 7 admin account is located in the tree.
Password	Enter a password for this ZENworks 7 Server.

- **AdminStudio ZENworks Edition for ZENworks 10 and 11 Users**—If you are activating AdminStudio ZENworks Edition for ZENworks 10 and 11, the **ZENworks Server Login** dialog box opens:



The dialog box is titled "ZENworks Server Login". It contains the following text: "AdminStudio ZENworks Edition requires a running instance of ZENworks Configuration Management server in order to operate. Specify the ZENworks Configuration Management server login information and click 'Login' to proceed." Below this text are three input fields: "Server URL:", "User Name:", and "Password:". At the bottom right are two buttons: "Login" and "Exit".

Enter the following information:

Field	Description
Server URL	<p>Enter the URL of your organization's ZENworks Configuration Management server, preceded by <code>http://</code>, such as:</p> <p><code>http://111.22.33.444</code></p> <p>You can enter either the server name or the IP address.</p> <div></div> <p>Note • Do not use the <code>https://</code> prefix.</p>
User Name Password	<p>Enter the login credentials to login to your ZENworks Configuration Management server.</p>



Tip • After a successful login, you will not be prompted to login again.

5. Click **Login**. AdminStudio ZENworks Edition opens.

Registering and Activating AdminStudio Limited Edition for LANDesk Management Suite

To register and activate AdminStudio Limited Edition for LANDesk Management Suite, perform the following steps.



Important • After you activate AdminStudio Limited Edition for LANDesk Management Suite, it can only be used when the LANDesk Management Suite is already installed. The first time you launch an AdminStudio LANDesk Edition tool, you will be prompted to log in to a LANDesk Management Suite Server. After a successful login, you will not be prompted to login again.



Task: **To register and activate your installation of AdminStudio Limited Edition for LANDesk Management Suite:**

1. When you complete the Limited Edition for LANDesk Management Suite installation, the **AdminStudio Limited Edition for LANDesk Management Suite Serial Number Registration** page opens in a Web browser.



Note • To access this page, you can also go to the following location on the Flexera Software Web site:

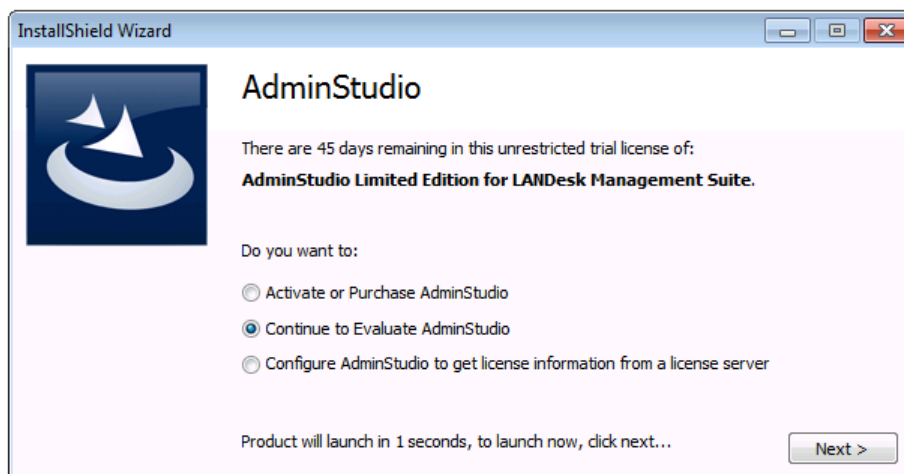
http://www.flexerasoftware.com/browser/as_landesk/serial_registration.htm

2. Follow the prompts to complete the registration. When you have completed the registration, your AdminStudio Limited Edition for LANDesk Management Suite Serial Number will be displayed. You will use this serial number to activate AdminStudio.
3. Copy this serial number into the clipboard. You may also want to save a copy of it in a text file.

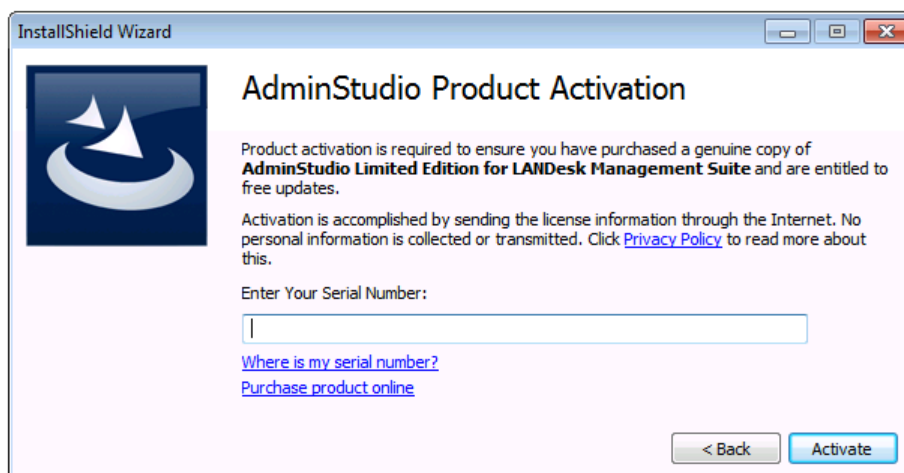
Chapter 6: Activating AdminStudio

Registering and Activating AdminStudio Limited Edition for LANDesk Management Suite

4. Launch AdminStudio Limited Edition for LANDesk Management Suite. The following dialog box opens, prompting you to either activate or evaluate AdminStudio.



5. Select **Activate or Purchase AdminStudio** and click **Next**. The AdminStudio Product Activation dialog box opens, and you are prompted to **Enter Your Serial Number**.

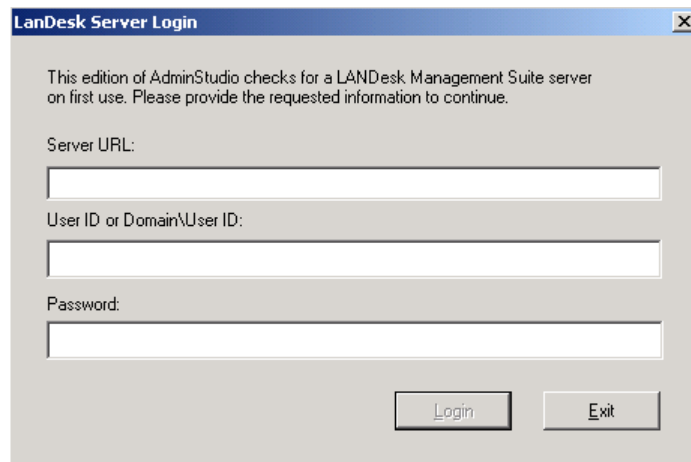


6. Enter your serial number and click **Activate**. First, a message appears stating that the serial number is being validated, and then the message **Activation Complete** appears. Your product would then be fully activated and you would be able to use all of the tools that are included in the AdminStudio Limited Edition for LANDesk Management Suite.



Note • If you do not have an online connection, you can activate your product via email. See [Email Activation](#).

7. Click **Finish** to open the tool and begin using it. You will then be prompted to log in to a LANDesk Management Suite server.



Note • Your organization should have previously installed the LANDesk Management Suite server and provided you with the appropriate login credentials for that server. After a successful login, you will not be prompted to login again.

8. Enter the appropriate login credentials for your organization and click **Login**. AdminStudio Limited Edition for LANDesk Management Suite opens.

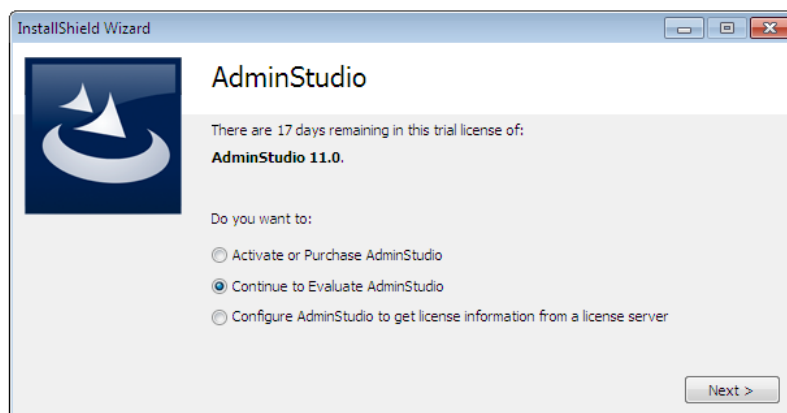
Activating AdminStudio Configuration Manager Edition

If you want to activate AdminStudio Configuration Manager Edition after using it in evaluation mode, perform the following steps.

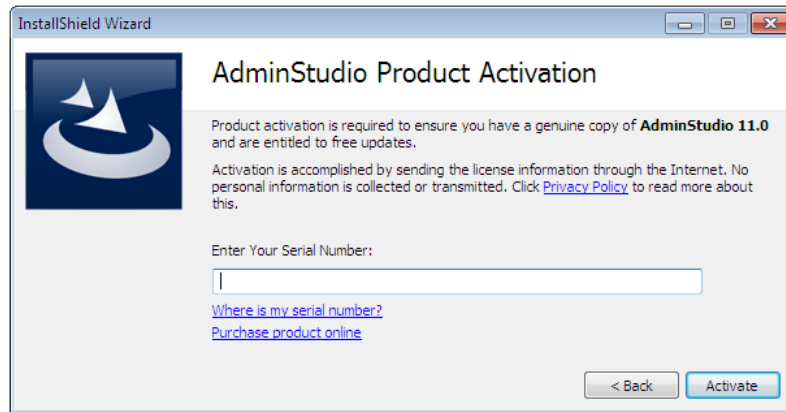


Task: *To activate your installation of AdminStudio Configuration Manager Edition:*

1. If you have not yet obtained an AdminStudio Configuration Manager Edition serial number (either when you downloaded the installation or when you completed installation), open the AdminStudio Configuration Manager Edition Serial Number Registration page on the Flexera Software Web site:
http://www.flexerasoftware.com/browser/as_sccm/serial_registration.htm
2. Follow the prompts to complete the registration. When you have completed the registration, your AdminStudio Configuration Manager Edition Serial Number will be provided. You will use this serial number to activate AdminStudio.
3. Copy this serial number into the clipboard. You may also want to save a copy of it in a text file.
4. Launch AdminStudio Configuration Manager Edition. The following dialog box opens, prompting you to either activate or evaluate AdminStudio.



5. Select **Activate or Purchase AdminStudio** and click **Next**. The AdminStudio Product Activation dialog box opens, and you are prompted to **Enter Your Serial Number**.

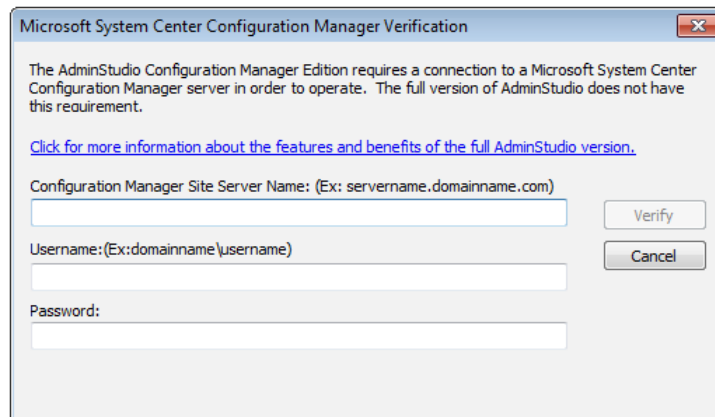


6. Enter your serial number and click **Activate**. First, a message appears stating that the serial number is being validated, and then the message **Activation Complete** appears. Your product would then be fully activated and you would be able to use all of the tools that are included in the AdminStudio Configuration Manager Edition.



Note • If you do not have an online connection, you can activate your product via email. See [Email Activation](#).

7. Click **Finish** to open the tool and begin using it. You will then be prompted to log in to a Configuration Manager server.



8. Enter the appropriate login credentials for your organization and click **Login**. AdminStudio Configuration Manager Edition opens.

Activation Troubleshooting

AdminStudio is protected by our own licensing technology in order to ensure the acceptable use of our products on a single and unique machine.

In order to install the full version of AdminStudio, it must first be activated through communication with an activation server. While we have thoroughly tested our license protection, there are some circumstances that could prevent this activation from occurring. The troubleshooting steps in this section should resolve these circumstances.

- [General Troubleshooting](#)
- [Activating Through Email](#)
- [Activating Products Silently](#)
- [Reactivating AdminStudio on a Different Computer](#)

General Troubleshooting

The following troubleshooting steps should resolve most activation issues:

- [General Troubleshooting Steps](#)
- [Virtual Environments](#)
- [Authenticated Proxy Support for Activation](#)

General Troubleshooting Steps

If you are having trouble activating your product, review the following troubleshooting steps:

- **Are you registered?** If you have purchased your software through a reseller, registration of your serial number is required before activation can take place. See [About Registration](#)
- **Disable any firewalls or proxy settings.** Certain firewall and proxy configurations can prevent the Activation Service from communicating with the Flexera Software-hosted activation servers. We recommend temporarily disabling firewalls and proxies while installing and uninstalling in order to allow full communication with our servers. If you are unable to modify these services, then an email activation may be required. See [Activating Through Email](#)
- **Check the serial number.** Confirm that the serial number you are entering is correct, and that it has been entered in the format XXXXXX-XXX-XXXXXXXXXX (7-3-10).

- **Was your product previously activated on another machine?** If your product has been previously activated on another machine, you must first deactivate the license on that machine through a full uninstall before it can be activated on the new machine. Deactivation requires an internet connection to communicate with the server to properly free up a different machine for activation.



Note • For more detailed information about deactivation, please see the following knowledge base article:

[Activation and Deactivation Information for InstallShield and AdminStudio](#)

Virtual Environments

Some known issues with activation relate to virtual environments (VMware, VirtualPC, etc.) and running system restore utilities. It is recommended that AdminStudio be installed on stable systems that are not run in virtual environments and that are not re-imaged frequently.

Authenticated Proxy Support for Activation

AdminStudio 7.5 or later supports authenticated proxies for activation.

Activating Through Email

If you do not have an Internet connection or if you are having problems completing the online activation process, the activation wizard gives you the option of performing offline activation through email.



Task: **To activate AdminStudio through email:**

1. Attempt to activate AdminStudio through the Internet. If it cannot be completed, the activation wizard displays a message explaining why it could not occur.
2. Click the **Proceed with offline verification** button. The **Offline Verification** dialog opens. The **Request text** box contains your request text. The request text starts with `<?xml version`, and it ends with `</Request>`.
3. Perform one of the following steps:
 - **To copy the request text to the clipboard**, click the **Copy** button. Note that all of the text in the **Request** text box must be selected when you do this. The activation wizard copies the request text to your clipboard, enabling you to paste it into another application, such as Notepad. Send the request text to the email address that is provided in the activation wizard.
 - **To save the request text to a text file that you can email from a different machine**, click the **Save** button. The wizard lets you save the text as a `.request` file. Send the `.request` file to the email address that is displayed in the activation wizard.
 - **To print the request text**, click the **Print** button. The wizard uses your machine's default text editor to print the request text to your machine's default printer. Send the request text to the email address that is provided in the activation wizard.

- **To email the request text to AdminStudio Support from the machine that is running the verification wizard**, click the **E-mail** button. The wizard opens a new email message in your default email client. The body of the message contains the request text that AdminStudio Support needs. The **To** field has the email address where you should send the message. Send the message.

When AdminStudio Support receives the email message from you, a representative will email to you a message with the response text. If you still have time left in your trial period, you can use AdminStudio while you wait for the message.

4. When you receive the email message from AdminStudio Support and you are ready to complete the verification process, launch AdminStudio to open the verification wizard.
5. Proceed to the **Offline Verification** dialog box, which has a **Response** text box.
6. Copy the response text that is in the email message from AdminStudio Support to your clipboard. The response text starts with `<?xml version=`, and it ends with `</Response>`. In the wizard, click the **Paste** button.



Note • As an alternative for step 6, you can copy the response text and paste it into a text file. Change the name of the text file to `License.response`. In the **Offline Verification** dialog box, click the **Load** button, and then select the `License.response` file.

7. Click the **Activate** button. The activation wizard activates AdminStudio.

Activating Products Silently

AdminStudio 7.5 or later supports silent activation, enabling you to use public Windows Installer properties to enter the serial number automatically during installation.

To enable silent activation, you need to set the following public Windows Installer properties.

- **PRODUCTID property**—Set the `PRODUCTID` property to a valid AdminStudio serial number. Enter this number in the following 7-3-10 format, including dashes: `XXXXXXX-XXX-XXXXXXXXXX`.
- **ASACTSTATUS property**—Set the `ASACTSTATUS` property to 0 to allow the installer to show the status of the activation process as the product is activated, or set it to 1 to perform the activation without showing any status of the activation process.

Reactivating AdminStudio on a Different Computer

AdminStudio uses a security technology known as the Activation Service. With this licensing software, the user of the installed product is required to “activate” via communication with a Flexera Software-hosted server. This process enables the product to work on a single, unique computer at a time, while disallowing simultaneous installation on other unauthorized systems.

If, after installing AdminStudio on a computer, you get a new computer or reformat the hard drive on your existing computer and then reinstall AdminStudio on that new computer or reformatted hard drive, the serial number you initially entered will no longer activate AdminStudio. Because you have already used that serial number to activate an installation of AdminStudio, it is now deactivated.

To reactivate your serial number, you need to first deactivate the license on that machine through a full uninstall before it can be activated on the new machine. Deactivation requires an internet connection to communicate with the server to properly free up a different machine for activation.



Note • *If you are unable to perform a full uninstall of AdminStudio (because, for example, you no longer have the computer you originally installed AdminStudio on), you need to contact AdminStudio Sales at (800) 809-5659 to have them authorize a new activation.*

Upgrading Your Product Edition

If you originally purchased AdminStudio Standard or Professional Edition, or if you are using a Limited Edition, and want to upgrade to a higher Edition, an upgrade feature has been built-in to AdminStudio that allows you to activate features in a higher Edition without re-installing the application.



Note • You can also obtain an AdminStudio Enterprise Server Evaluation serial number from AdminStudio Sales which will allow you to try out the AdminStudio Enterprise Server Web tools before purchasing Enterprise Edition. See [Evaluating the AdminStudio Enterprise Server Web Tools](#) for more information.

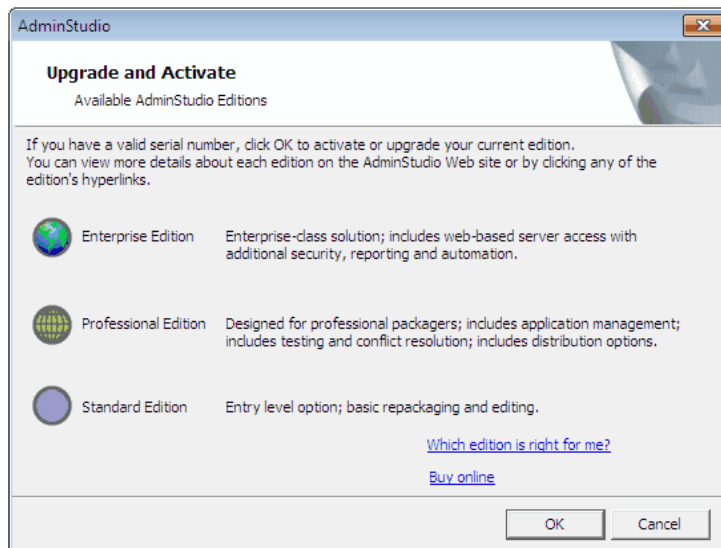
To upgrade your product edition, perform the following steps:



Task:**To upgrade your AdminStudio Edition:**

1. Contact an AdminStudio Sales Representative and purchase a serial number for the Edition that you want to upgrade to.
2. Launch AdminStudio.
3. On the **Help** menu, click **About AdminStudio**. The **About AdminStudio** dialog box opens.

4. Click the **Upgrade** button. The **Upgrade & Activate** dialog box opens.



5. Click **OK** to upgrade your edition. The **AdminStudio Product Activation** dialog box opens, prompting you to enter the serial number of the edition that you want to upgrade to.
6. Enter the serial number of the edition you purchased and click the **Activate** button. After a few seconds, you will receive a message that activation was successful. The functionality of the upgraded edition is immediately available to you.

Evaluating AdminStudio

If you want to try out AdminStudio prior to making your purchasing decision, you can evaluate it prior to activation: The trial period available to you varies by Edition:

Table 8-1 • Evaluation Periods Per Edition

Edition	Evaluation Period
AdminStudio Standard, Professional, Enterprise Editions	21 days
AdminStudio ZENworks Limited Edition	60 days
AdminStudio Configuration Manager Limited Edition	21 days
AdminStudio Limited Edition for LANDesk Management Suite	45 days

In evaluation mode, you have the functionality of the AdminStudio Enterprise Edition client tools available to you.

If you want to evaluate the AdminStudio Enterprise Server Web tools, you can contact AdminStudio Sales to obtain a special evaluation serial number, as described in [Evaluating the AdminStudio Enterprise Server Web Tools](#).

This chapter includes the following topics:

- [Evaluating AdminStudio Enterprise Edition Client Tools](#)
 - [Evaluating AdminStudio's Microsoft App-V Support](#)
 - [Evaluating the Automated Application Converter "Multiple Application" Option](#)
 - [Evaluating Compatibility Solver](#)
- [Evaluating the AdminStudio Enterprise Server Web Tools](#)
- [Activating AdminStudio After Evaluation Period](#)

Evaluating AdminStudio Enterprise Edition Client Tools

In evaluation mode, you have the functionality of the AdminStudio Enterprise Edition client tools available to you. If you want to evaluate the AdminStudio Enterprise Server Web tools, you can contact AdminStudio Sales to obtain a special evaluation serial number.

If you have not purchased a license for AdminStudio, you can still install AdminStudio and use it for a limited number of days without performing serial number verification. When you run AdminStudio in this trial mode, all of its features are fully available. The dialog box that AdminStudio displays whenever you launch AdminStudio in trial mode shows you how many days are left in your trial period.

If you do not verify AdminStudio within the trial period, AdminStudio will stop working when the trial period has ended. You can perform serial number verification at any time before or after the trial period has ended.

To evaluate the Enterprise Edition client tools, perform the following steps.

**Task:*****To evaluate the AdminStudio Enterprise Edition client tools:***

1. Install AdminStudio.
2. Launch AdminStudio. A dialog box opens, stating that you are using a time-limited trial version.
3. If you want to evaluate AdminStudio, select **Continue to Evaluate AdminStudio** and click **Next** (or just wait ten seconds). The product will launch.
 - When you run AdminStudio in this trial mode, all of its features are fully available.
 - Each time you open AdminStudio while you are in evaluation mode, this dialog box shows you how many days are left in your trial period.
4. If you have five or fewer days left in your trial period, the dialog box remains open, requiring you to click before you can proceed. Do one of the following:
 - a. If your trial period is not over, you can continue to use AdminStudio by selecting the **Continue to Evaluate AdminStudio** option and clicking **Next**.
 - b. If you have already purchased a serial number or want to purchase one online, select **Activate or Purchase AdminStudio** and click **Next**.
5. When the evaluation period expires, you could then activate AdminStudio by following the steps in [Activating AdminStudio After Evaluation Period](#).



Note • If you want to evaluate the AdminStudio Enterprise Server Web tools (Job Manager, Report Center, Security Console), you need to obtain an Enterprise Server serial number from an AdminStudio Sales Representative. See [Evaluating the AdminStudio Enterprise Server Web Tools](#).



Note • For additional information on the AdminStudio Limited Edition for LANDesk Management Suite, see [Evaluating the Client Tools in the Limited Edition for LANDesk Management Suite](#).

Evaluating AdminStudio's Microsoft App-V Support

In AdminStudio 9.01, the AdminStudio Virtualization Pack now supports the Microsoft Application Virtualization (App-V) virtual application format. While evaluating the AdminStudio Enterprise Edition client tools, you will be able to convert a Windows Installer package to an App-V application using both the Windows Installer Converter and the InstallShield App-V Assistant. However, an App-V application built using an evaluation version of AdminStudio will display the following message every time it is launched:

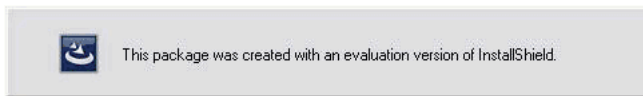


Figure 8-1: Evaluation Version Message

After purchasing the AdminStudio Virtualization Pack, you will be able to remove this message by rebuilding the App-V application.

Evaluating the Automated Application Converter “Multiple Application” Option

The Multiple Application option of Automated Application Converter is only available when purchased on the AdminStudio “Per Desktop” licensing model.



Note • If you purchase Automated Application Converter on the “Per Admin” licensing model, you will only be able to convert one package at a time, using one virtual machine.

When using an evaluation version of AdminStudio, you will be able to use the Multiple Application option to convert a directory full of Windows Installer packages into individual virtual packages, but the conversion will be limited to three packages per run, using only one virtual machine. Therefore, only the first three packages that Automated Application Converter encounters will be converted to virtual applications.

Evaluating Compatibility Solver



Edition • *Compatibility Solver is included in the AdminStudio Application Compatibility Pack.*

If you want to try out the AdminStudio Application Compatibility Pack prior to making your purchasing decision, you can evaluate it for 21 days.

However, when you run Compatibility Solver in evaluation mode, the functionality is limited to a single database connection and loading a maximum of 10 packages.

Evaluating the Client Tools in the Limited Edition for LANDesk Management Suite

There are several additional guidelines that are followed when evaluating the AdminStudio client tools in the Limited Edition for LANDesk Management Suite:

- [AdminStudio Client Tools Available During Evaluation: Typical or Complete](#)
- [Server Connection Not Required During Evaluation Period](#)

AdminStudio Client Tools Available During Evaluation: Typical or Complete

The tools available to you during the evaluation period depends upon the selection you made on the **Setup Type** panel of the AdminStudio Limited Edition for LANDesk Management Suite installation:

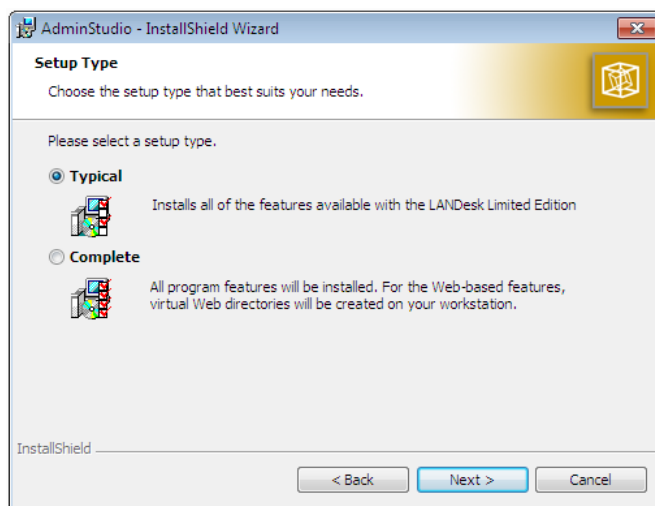


Figure 8-2: Setup Type Panel

The choice that you make on the **Setup Type** panel affects the tools that are available to you if you choose to evaluate the product:

- **Typical**—If you choose this option, only the tools included in this Limited Edition are installed. Therefore, during the evaluation period, only those tools are available.
- **Complete**—If you choose this option, all of the AdminStudio Enterprise Edition client tools are installed. This enables you to evaluate all of these tools during your 45-day evaluation period. After the evaluation period ends and you enter your AdminStudio Limited Edition for LANDesk Management Suite serial number, only those tools included in the Limited Edition will be available to you.

Server Connection Not Required During Evaluation Period

After you activate AdminStudio Limited Edition for LANDesk Management Suite, it can only be used when the LANDesk Management Suite is already installed. However, in evaluation mode, there is no LANDesk Management Suite Server connection requirement.

Evaluating the AdminStudio Enterprise Server Web Tools

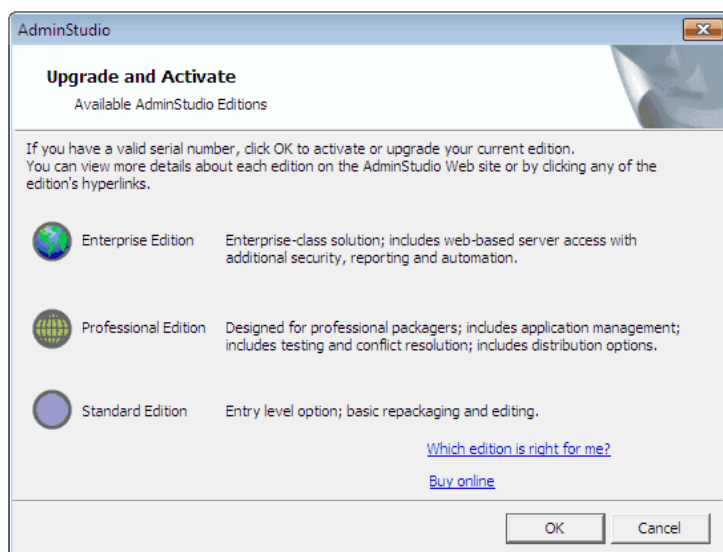
If you want to evaluate the AdminStudio Enterprise Server Web tools (Job Manager, Report Center, Security Console), you need to obtain an Enterprise Edition Serial Number from an AdminStudio Sales Representative.



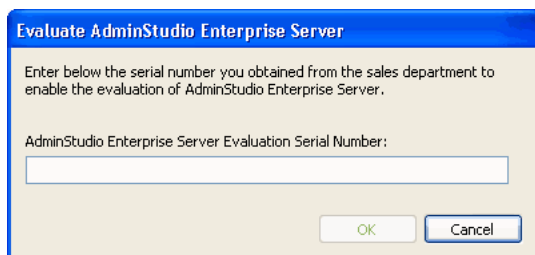
Task:

To evaluate the AdminStudio Enterprise Server Web tools:

1. Follow the steps in [Evaluating AdminStudio Enterprise Edition Client Tools](#).
2. Contact an AdminStudio Sales Representative and obtain an AdminStudio 11.0 Enterprise Server Evaluation Serial Number.
3. Open the AdminStudio interface and select **About AdminStudio** from the **Help** menu.
4. Click **Activate**. The **Upgrade and Activate** dialog box opens.



5. Select the **I have an Adminstudio Enterprise Server evaluation serial number** option and click **OK**. The **Evaluate Enterprise Edition** dialog box opens.



6. Enter the serial number and click **OK**. You will be prompted to install the AdminStudio Enterprise Server on the current machine.



Caution • AdminStudio Enterprise Server requires Windows Server 2003 or later (32-bit platforms only). You cannot install or evaluate AdminStudio Enterprise Server on a non-server machine.

7. Click **Yes**. The AdminStudio Enterprise Server installation begins.
8. Install AdminStudio Enterprise Server, as described in the *AdminStudio Web Server Installation Guide*, which is available on the AdminStudio Downloads site.

Activating AdminStudio After Evaluation Period

If you chose the evaluation option when you opened AdminStudio for the first time and now you want to purchase an AdminStudio Edition and activate it, perform the following steps.



Task: *Activating AdminStudio after using it in Evaluation mode:*

1. Contact AdminStudio Sales and purchase a Serial Number for an edition of AdminStudio.
2. Launch AdminStudio. A dialog box opens, stating that you are using a time-limited trial version and listing the number of days left in your trial period.
3. Select **Activate or Purchase AdminStudio** and click **Next**. You are prompted to **Enter Your Serial Number**.
4. Enter the serial number of the edition you purchased and click the **Activate** button. After a few seconds, you will receive a message that activation was successful.
5. Click **Finish**. AdminStudio will launch.

Your product would then be fully activated and you would be able to use all of the tools that are included in the Edition of AdminStudio that you purchased.



Note • If you do not have a online connection, you can activate your product via email. See [Activating Through Email](#).

Chapter 8: Evaluating AdminStudio

Activating AdminStudio After Evaluation Period

Index

A

activation [77](#)
 about [78](#)
 of AdminStudio purchased from Flexera Software [79](#)
 of AdminStudio purchased from reseller [79](#)
 offline [91](#)
 registering your product [79](#)
 silent [92](#)
 troubleshooting [90](#)
 upon initial startup [79](#)
 using Windows Installer properties [92](#)
 via email [91](#)
AdminStudio
 about activation [78](#)
 activation [77](#), [79](#)
 AdminStudio Shared directory [38](#), [54](#), [58](#), [62](#)
 client tools [39](#)
 client tools installation [35](#), [51](#)
 client-only install [39](#)
 complete install [39](#)
 configuring SMS Web Console and Predeployment Test Results Web site [43](#)
 custom install [39](#)
 editions [9](#)
 Enterprise edition [9](#)
 evaluating AdminStudio Enterprise Server Web tools [102](#)
 evaluating Enterprise Edition client tools [98](#)
 how to evaluate [97](#)
 installing [35](#), [38](#), [51](#)
 installing IIS [33](#)
 installing Predeployment Test Reports Web site [41](#)
 installing SMS Web Console [41](#)

 installing Web tools [41](#)
 list of client tools [36](#)
 Professional edition [9](#)
 reactivating on different computer [92](#)
 registering your product [79](#)
 running client tools installation [38](#)
 serial numbers [78](#)
 server tools [39](#)
 Standard edition [9](#)
 test drive [97](#)
 trial version [97](#)
 upgrading [95](#)
 upgrading to Professional or Enterprise Edition [95](#)
 upgrading your product Edition [95](#)
 Web tools [39](#)
AdminStudio 5.x
 upgrading Application Catalog from [46](#)
AdminStudio 6.x
 upgrading Application Catalog from [46](#)
AdminStudio 7.x
 upgrading Application Catalog from [46](#)
AdminStudio Shared directory [38](#), [54](#), [58](#), [62](#)
application catalogs
 upgrading [46](#)
App-V applications
 evaluating AdminStudio's App-V support [99](#)

B

batch convert option
 evaluating [99](#)

D

database
upgrading [46](#)

E

email activation [91](#)
evaluating
AdminStudio [97](#)
AdminStudio Enterprise Server [102](#)
AdminStudio's Microsoft App-V support [99](#)
batch convert option [99](#)

H

HTTP Port 80 [40](#)

I

IIS (Internet Information Services (IIS)) [33](#)
installing
AdminStudio [35](#), [51](#)
AdminStudio client tools [38](#)
Predeployment Test Reports Web site [41](#)
reactivating AdminStudio on a different computer [92](#)
SMS Web Console [41](#)

O

offline activation [91](#)

P

Predeployment Test Results Web site
configuring [43](#)
installing [41](#)
verifying installation [45](#)
Windows firewall settings [40](#)

R

reactivation
of AdminStudio on a different computer [92](#)
registration [79](#)
offline [91](#)
reseller
activation of products from [79](#)

S

serial numbers [78](#)
Setup Type panel [63](#)
silent activation [92](#)
SMS Web Console
configuring [43](#)
HTTP Port 80 [40](#)
installing [41](#)
verifying installation [43](#)
Windows firewall settings [40](#)
system requirements
hardware and software [26](#)

T

trial version
AdminStudio [97](#)
typical vs. complete installation [63](#)

U

upgrading
AdminStudio product Edition [95](#)
Application Catalogs [46](#)
database [46](#)

W

watermark [99](#)