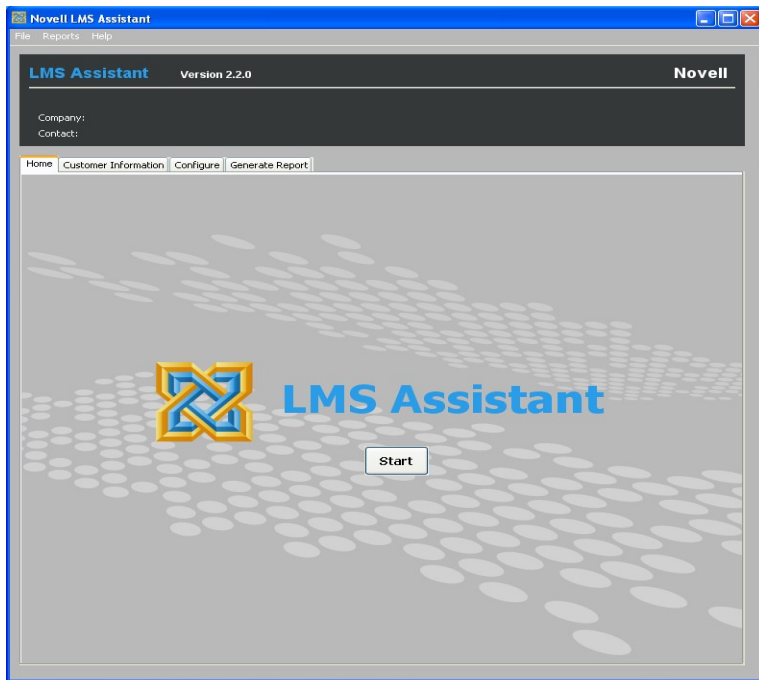


LMS Assistant Instructions

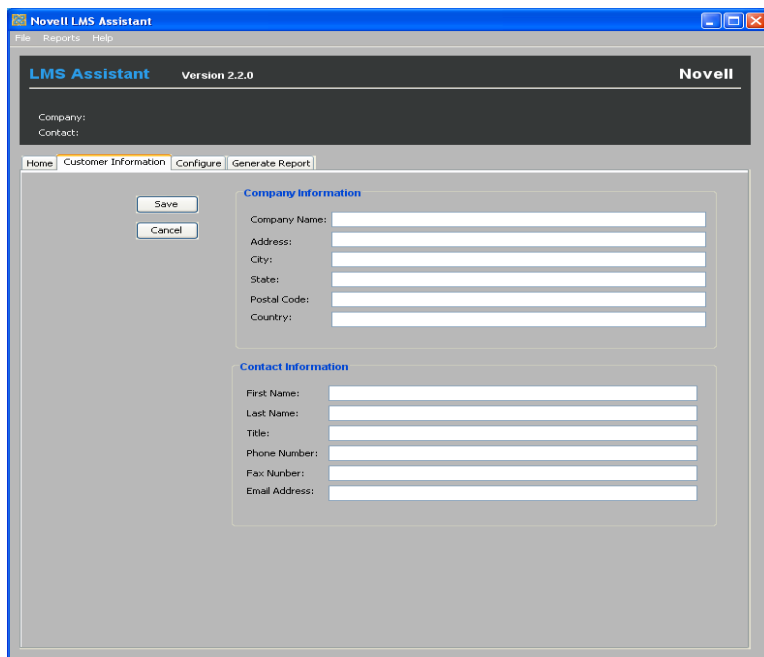
1. Go to <http://www.novell.com/licensing/lms/tools.html> and download the **LMS Assistant** usage tool.
2. Download the .ZIP file for the LMS Assistant tool. **NOTE: LMS Assistant requires Java 1.6 or newer.**
3. Extract **ALL** files from the .ZIP file to a temporary folder on your desktop.
 - a) **Windows:** Run the “LMSAssistant.bat” file.
 - b) **Linux:** Run the “LMSAssistant.sh” file (i.e., sh ./LMSAssistant.sh).
4. Once the tool loads, you should see the screen below.

Note: The first time the tool is loaded it may take awhile to initialize before the screen appears.



5. Click the **Customer Information** tab to fill out Customer Information.

6. After the Customer Information has been filled out click **Save**.



Customer Information

Company Name: _____

Address: _____

City: _____

State: _____

Postal Code: _____

Country: _____

Contact Information

First Name: _____

Last Name: _____

Title: _____

Phone Number: _____

Fax Number: _____

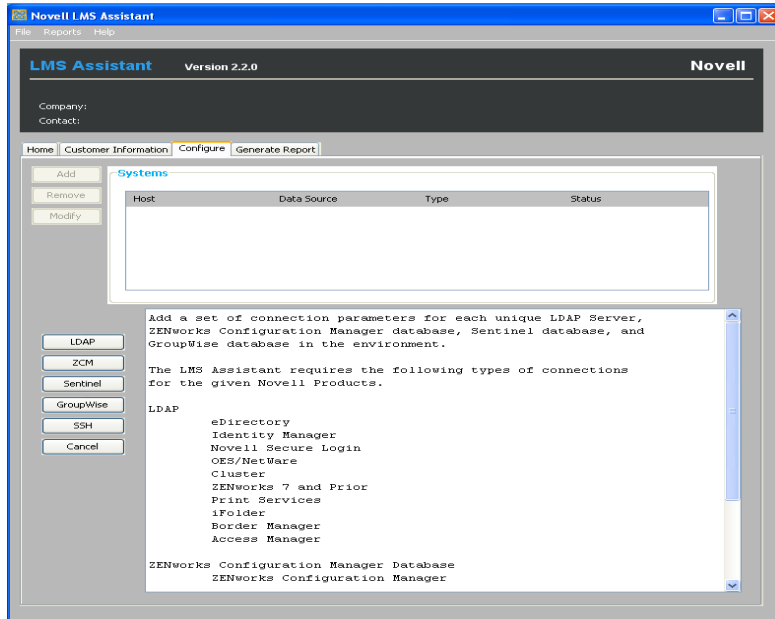
Email Address: _____

Save

Cancel

7. Click the **Configure** tab.

8. Select the **Add** button that is highlighted to take you to the products to be configured.



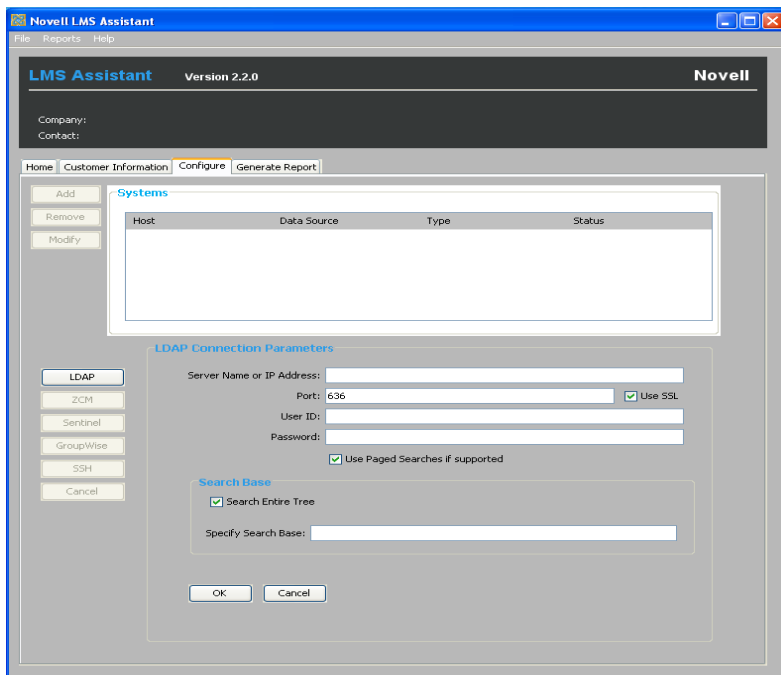
9. Click the **LDAP**, **ZCM**, **Sentinel**, **GroupWise**, or **SSH** buttons to add parameters for each LDAP server, SSH and/or database connection in your environment.

Note: If a given LDAP server has access to all objects in the tree, only one set of LDAP parameters may be required, otherwise you will need to add additional LDAP parameter sets in order for the tool to have access to all objects in the tree.

10. To add LDAP Parameters, click the **LDAP** button on the left-hand side.

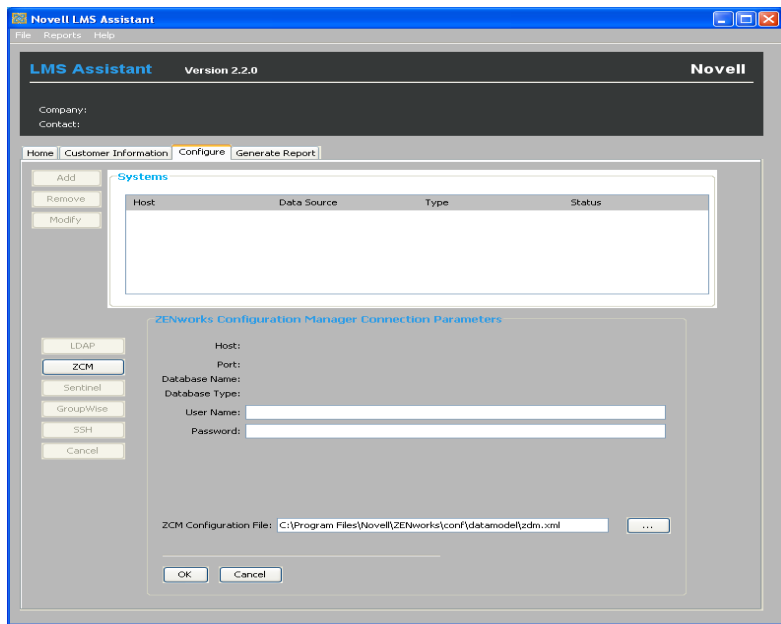
a) The screen shot below shows **LDAP Parameters** (Novell eDirectory, Identity Manager, Novell Secure Login, OES/NetWare, Cluster Services, ZENworks, Print Services, iFolder, BorderManager, and Access Manager). For additional information regarding specific LDAP Parameters, please see the Parameter Definitions table at the end of the document.

Note: LMS Assistant will not save the password. If you exit LMS Assistant and restart it, you will need to enter the password again.



b) The screen shot below shows **ZENworks Configuration Management Database Connection Parameters** (Sentinel is similar). For additional information regarding specific parameters for database connections, please see the Parameter Definitions table at the end of the document

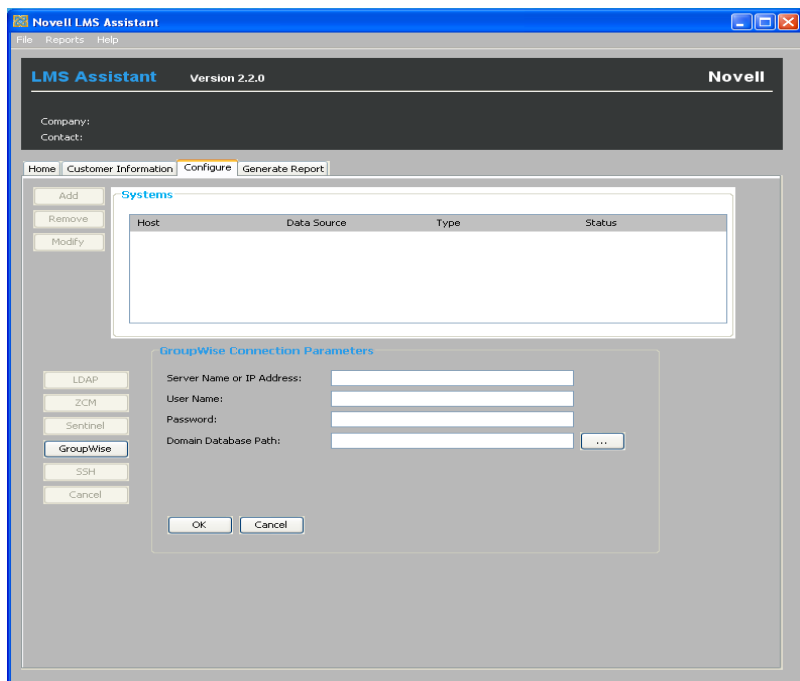
Note: LMS Assistant will not save the password. If you exit LMS Assistant and restart it, you will need to enter the password again.



c) The screen shot below shows **GroupWise Configuration Parameters**. For additional information regarding specific parameters for GroupWise Connections, please see the Parameter Definitions at the end of the document.

To collect GroupWise usage, LMS Assistant must be run from a Windows Machine that has the Novell Client installed and 8.x snapins for Console One need to be installed. Before running LMS Assistant for GroupWise, you must perform the "GroupWise Audit" for each post office in the environment. Refer to the GroupWise documentation on how to run the audit function.

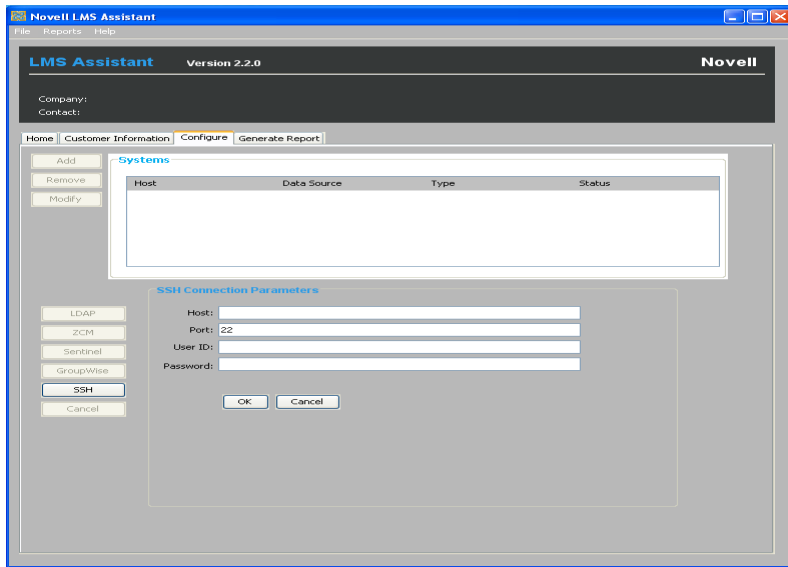
Note: You will need to enter a set of GroupWise connection parameters for each domain in the environment. Depending on the number of Domains, Post Offices and Users/Mailboxes the "Report Generation" step may take longer to complete.



11. Enter the appropriate parameters and click **OK**.

12. The screen shot below shows **SSH Configuration Parameters**. For additional information regarding specific parameters for SSH connections, please see the Parameter Definitions at the end of the document.

Note: LMS Assistant will not save the password. If you exit LMS Assistant and restart it, you will need to enter the password again.



13. If you have more than one LDAP server, SSH Host, or Database in your environment please continue to add parameters until you've provided parameters for all of your systems.

Note: If a given LDAP server has access to all objects in the tree, only one set of LDAP parameters may be required, otherwise you will need to add additional LDAP parameter sets in order for the tool to have access to all objects in the tree.

14. Click on the **Generate Report** tab.

15. Click the highlighted **Generate** button.

16. A "Getting Usage" bar will appear and the status will show **Running** (LMS Assistant will proceed to get usage for all parameters listed in the Systems section).

17. Once the **Running** status for each LDAP server, SSH Host, or Database has moved to **Completed** and the "Getting Usage" bar is gone, the tool will show the parameters entered in the **Completed** status.

18. You can then click on the **View Summary** and **View Detail** buttons for your products. Once you are done viewing these reports, click the **Send** button.

19. The LMS Assistant will save a "usage.zip" in the **same** folder that LMS Assistant was started from.

20. Please send a copy of the "usage.zip" to your License Management Services analyst. If you do not know who your analyst is please email the "usage.zip" to LMS@novell.com

NOTE: If you receive an error while running LMS Assistant, please verify your parameters are correct and send a copy of the LMSAssistant.log file to your License Management Services analyst (the LMSAssistant.log file is located in the same folder that LMS Assistant was started from) Parameter Definitions for **LDAP Connections:**

Server Name or IP Address	The LDAP server that LMS Assistant will connect to in order to audit the tree. The server may be specified by IP address or DNS name.
Port	The port where LMS Assistant will try to locate LDAP Services on the server specified. Port 636 is the default port to access LDAP via a Secure Sockets Layer (SSL) connection.

	<i>Note: LDAP server port values are configurable, meaning you could create a different port assignment so using the default values may not be valid.</i>
User ID	The User ID LMS Assistant will use when connecting to the LDAP server. If you are connecting via SSL this parameter MUST be specified. Be sure the User ID being used has access to all objects in the tree. Be sure to format the User ID using LDAP typeful notation (e.g. cn=admin,o=novell). For the best results, use a user ID and password with administrator equivalent rights.
Password	This is the password for the User ID specified above.
Search Entire Tree	Should be checked as the default.
Specify Search Base	The container in the tree where LMS Assistant will perform its audit. Initially, leave this parameter blank. If you need to enter a value, it must be a valid LDAP DN and formatted in LDAP typeful notation (i.e., ou=dirxml,o=provo).
Use SSL	This box must be checked to access LDAP via Secure Sockets Layer (SSL) connection.
Use Paged Searches	This box must be checked if you want the LMS Assistant to use LDAP Paged Searches if they are supported. The advantage of using Page Searches is a reduction in the amount of memory that is generally required to perform a given LDAP search.

Parameter Definitions for **Database Connections:**

User Name	The User Name LMS Assistant will use when connecting to the database. The LMS Assistant gets this parameter from the das_query.xml (Sentinel) file, das_core.xml (Sentinel RD) file, or the zdm.xml (ZENworks Configuration Management) file.
Host	The Host LMS Assistant will use when connecting to the database. The LMS Assistant gets this parameter from the das_query.xml (Sentinel) file, das_core.xml (Sentinel RD) file, or the zdm.xml (ZENworks Configuration Management) file.
Port Number	The Port LMS Assistant will use when connecting to the database. The LMS Assistant gets this parameter from the das_query.xml (Sentinel) file, das_core.xml (Sentinel RD) file, or the zdm.xml (ZENworks Configuration Management) file.
Database Name	The name of the database. The LMS Assistant gets this parameter from the das_query.xml (Sentinel) file, das_core.xml (Sentinel RD) file, or the zdm.xml (ZENworks Configuration Management) file.
Password	This is the password for the User Name specified above.
Configuration File	This is the path to the das_query.xml (Sentinel) file, das_core.xml (Sentinel RD) file, or the zdm.xml (ZENworks Configuration Management) file.

Parameter Definitions for **GroupWise Connections:**

Server Name or IP Address	The server hosting the domain database. The server may be specified by an IP Address or by an NDS name.
User Name	This parameter specifies the User ID that will be used when connecting to the Server. The User Name must be the full context in NDS format (e.g., admin.novell). The User ID you specify must have rights to the domain database.
Password	Password for the specified User ID. The password is required to make the server connection. LMS Assistant does not save the password. If you exit LMS Assistant and restart it, you will need to enter the password again.
Domain Database Path	The complete path to the domain database on the specified server.

Parameter Definitions for **SSH Connections**:

Host Name or IP Address	The SSH host to connect to. The host may be specified by an IP Address or by name.
Port	This parameter specifies the port used to locate SSH service on the specific host. Port 22 is the default port. Note: SSH port values are configurable (meaning you could create a different port assignment), so using the default values may not be valid.
User ID	This parameter specifies the User ID that will be used when connecting to the SSH Service. For the best results, use a User ID and password with root user equivalent rights.
Password	Password for the specified User ID. The password is required to make the SSH connection. LMS Assistant does not save the password. If you exit LMS Assistant and restart it, you will need to enter the password again.