

Novell ZENworks® Personality Migration

7

www.novell.com

INSTALLATION GUIDE

December 9, 2005



Novell®

Legal Notices

Novell, Inc. makes no representations or warranties with respect to the contents or use of this documentation, and specifically disclaims any express or implied warranties of merchantability or fitness for any particular purpose. Further, Novell, Inc. reserves the right to revise this publication and to make changes to its content, at any time, without obligation to notify any person or entity of such revisions or changes.

Further, Novell, Inc. makes no representations or warranties with respect to any software, and specifically disclaims any express or implied warranties of merchantability or fitness for any particular purpose. Further, Novell, Inc. reserves the right to make changes to any and all parts of Novell software, at any time, without any obligation to notify any person or entity of such changes.

Any products or technical information provided under this Agreement may be subject to U.S. export controls and the trade laws of other countries. You agree to comply with all export control regulations and to obtain any required licenses or classification to export, re-export, or import deliverables. You agree not to export or re-export to entities on the current U.S. export exclusion lists or to any embargoed or terrorist countries as specified in the U.S. export laws. You agree to not use deliverables for prohibited nuclear, missile, or chemical biological weaponry end uses. Please refer to www.novell.com/info/exports/ for more information on exporting Novell software. Novell assumes no responsibility for your failure to obtain any necessary export approvals.

Copyright © 2005 Novell, Inc. All rights reserved. No part of this publication may be reproduced, photocopied, stored on a retrieval system, or transmitted without the express written consent of the publisher.

Novell, Inc. has intellectual property rights relating to technology embodied in the product that is described in this document. In particular, and without limitation, these intellectual property rights may include one or more of the U.S. patents listed at <http://www.novell.com/company/legal/patents/> and one or more additional patents or pending patent applications in the U.S. and in other countries.

Novell, Inc.
404 Wyman Street, Suite 500
Waltham, MA 02451
U.S.A.
www.novell.com

Online Documentation: To access the online documentation for this and other Novell products, and to get updates, see www.novell.com/documentation.

Novell Trademarks

ConsoleOne is a registered trademark of Novell, Inc., in the United States and other countries.

NetWare is a registered trademark of Novell, Inc., in the United States and other countries.

Novell is a registered trademark of Novell, Inc., in the United States and other countries.

Novell Application Launcher is a trademark of Novell, Inc.

Novell iFolder is a registered trademark of Novell, Inc., in the United States and other countries.

ZENworks is a registered trademark of Novell, Inc., in the United States and other countries.

Third-Party Materials

All third-party trademarks are the property of their respective owners.

Contents

About This Guide	7
1 What Is Novell ZENworks Personality Migration?	9
2 Preparing the Server for Personality Migration	11
2.1 Creating the Desktop DNA Template Store	11
2.1.1 Creating the Template Store on a NetWare Server	11
2.1.2 Creating the Template Store on a Windows Server	12
2.2 Creating the Personality Migration Personality Store	12
2.2.1 Creating the Personality Store on a NetWare Server	12
2.2.2 Creating the Personality Store on a Windows Server	12
3 Preparing Workstations for Personality Migration	15
3.1 Personality Migration Management Workstation	15
3.2 User Workstations	15
3.3 User Login Restriction	16
4 Installing ZENworks Personality Migration	17
5 Using the DNA Template Editor to Create the Template	19
5.1 Re-enabling the Muscle Migration Function.	20
6 Creating the Application Object to Collect the Personality	23
7 Creating the Application Object to Apply the Personality	25
8 Upgrading Personality Migration	27
A Documentation Updates	29
A.1 December 9, 2005	29

About This Guide

This *Novell ZENworks 7 Personality Migration Installation* guide consists of conceptual information to help you install and use Novell® ZENworks® Personality Migration.

The sections include:

- “What Is Novell ZENworks Personality Migration?” on page 9
- “Preparing the Server for Personality Migration” on page 11
- “Preparing Workstations for Personality Migration” on page 15
- “Installing ZENworks Personality Migration” on page 17
- “Using the DNA Template Editor to Create the Template” on page 19
- “Creating the Application Object to Collect the Personality” on page 23
- “Creating the Application Object to Apply the Personality” on page 25

Audience

This guide is intended for network administrators and IT professionals who manage network resources, and who want to use ZENworks 7 Personality Migration to preserve the applications and configurations on network workstations when users begin using new hardware.

Feedback

We want to hear your comments and suggestions about this manual and the other documentation included with this product. Please use the User Comment feature at the bottom of each page of the online documentation, or go to www.novell.com/documentation/feedback.html (<http://www.novell.com/documentation/feedback.html>) and enter your comments there.

Documentation Updates

See the [Novell Documentation Web site](http://www.novell.com/documentation) (<http://www.novell.com/documentation>) for the most current installation and administration information.

Additional Documentation

Computer Associates has provided Release Notes for this release of Personality Migration. These notes include minimum installation requirements, minimum run requirements, installation instructions, and descriptions of new features. For more information, see the [ZENworks 7 Personality Migration Readme](http://www.novell.com/documentation/zenworks7/readme/readme_pm_7.html) (http://www.novell.com/documentation/zenworks7/readme/readme_pm_7.html).

You can also read an article on the ZENworks Cool Solutions Web site about Personality Migration. For more information, see [Policy-Driven Personality Migration](http://www.novell.com/cool-solutions/zenworks/features/a_personality_mig_zw.html) (http://www.novell.com/cool-solutions/zenworks/features/a_personality_mig_zw.html).

Documentation Conventions

In Novell documentation, a greater-than symbol (>) is used to separate actions within a step and items in a cross-reference path.

A trademark symbol ([®], [™], etc.) denotes a Novell trademark. An asterisk (*) denotes a third-party trademark.

When a single pathname can be written with a backslash for some platforms or a forward slash for other platforms, the pathname is presented with a backslash. Users of platforms that require a forward slash, such as Linux or UNIX, should use forward slashes as required by your software.

What Is Novell ZENworks Personality Migration?

1

Novell® ZENworks® 7 Personality Migration is part of the Novell ZENworks product line, which also includes ZENworks Desktop Management, ZENworks Handheld Management, and ZENworks Server Management.

ZENworks products provide life cycle directory-enabled management for all of your network components. For more information on the ZENworks product line, see the [Novell ZENworks product Web site \(http://www.novell.com/products/zenworks\)](http://www.novell.com/products/zenworks).

Novell has partnered with Computer Associates International, Inc. (CA) to provide personality migration. CA provides ZENworks Personality Migration, powered by Unicenter® Desktop DNA®, to create the personality files. Novell provides ZENworks Desktop Management to distribute Application objects to collect, store, and apply personality settings to associated workstations.

The process of integrating Novell ZENworks Desktop Management and ZENworks Personality Migration consists of installing Desktop DNA, setting up a network directory structure to store Desktop DNA templates and personality files, creating the DNA template, and finally creating two Desktop Management Application objects. The first Application object collects the DNA personality from associated workstations and stores the files in a network location. The second Application object pushes and applies the DNA personality to associated workstations.

Desktop DNA lets you perform faster and more efficient PC migrations, upgrades, and backups. It uses the industry's only patented technology for customizing and automating the migration process of application and personal settings, applications, and data files. For more information about Computer Associates and Unicenter Desktop DNA, see the [Computer Associates Operations Management Web site \(http://www3.ca.com/Solutions/Product.asp?ID=4920\)](http://www3.ca.com/Solutions/Product.asp?ID=4920).

ZENworks Personality Migration provides enterprise customers the fastest return on investment by saving time and resources every step of the migration process. Whether you are migrating to a newer version of the Windows® operating system, replacing or refreshing old machines, or building a desktop recovery process, ZENworks Personality Migration helps your organization increase IT staff productivity, reduce user downtime, and save money.

Personality Migration lets you migrate the following:

- **User Accounts:** User profiles for the logged-on user or for multiple users.
- **Desktop:** Shortcuts, taskbar, wallpaper, display settings, and more.
- **Network Settings:** Dial-up settings, local network settings, TCP/IP and DNS settings, mapped network drives, folder and directory sharing, and more.
- **Printer Settings:** Printer settings are migrated if printer drivers are compatible with the destination system's operating system.
- **Applications:** ZENworks Personality Migration gives you the option to migrate any application on the source system.
- **Application Settings:** Preferences, templates, bookmarks, address books, macros, and other settings.

- **Files:** Any file can be migrated by selecting it from a check box tree, or by locating it with one or more search filters.
- **Folders:** You can migrate a folder and its contents or you can migrate entire folder structures.

ZENworks 7 Personality Migration supports the following migration types:

- **Real-Time:** Real-Time migrations take place over a TCP/IP network and transfer a workstation's personality directly from the old workstation to a new workstation. This type of migration is useful if you are replacing an old workstation with a new workstation. This type of migration is not the focus of this guide. For more information on real-time migration, refer to the Help topics in the Desktop DNA program.
- **Deferred:** Deferred migrations save your personality file on your desktop, local or network drive, writable CD/DVD, or any external media. You can transfer your personality file to your destination workstation using a Desktop Management Application object. This type of migration is useful if you are not changing the workstation, but simply installing a new operating system or implementing a disaster-recovery process. The focus of this guide is to help you use ZENworks Personality Migration to create a template to collect users' DNA files, store them in a network location, and then collect and apply the DNA files using two Desktop Management Application objects.

Preparing the Server for Personality Migration

A functioning Novell® ZENworks® 7 Desktop Management environment is a prerequisite for the ZENworks/Desktop DNA personality migration integration. This document is written with ZENworks 7 Desktop Management as the basis; the concepts could be used with earlier versions. For installation instructions for Desktop Management, see the *Novell ZENworks 7 Desktop Management Installation Guide*.

In the following sections, you create a directory structure to store the Desktop DNA templates and DNA personality files. We recommend that you control Rights or Permissions to these directories by using groups.

The directories you create can be placed on a single server (the DNA server) or on multiple servers, depending on your LAN/WAN environment, the scale of the migration, and the ongoing requirements for life cycle management.

The following sections contain additional information:

- [Section 2.1, “Creating the Desktop DNA Template Store,” on page 11](#)
- [Section 2.2, “Creating the Personality Migration Personality Store,” on page 12](#)

2.1 Creating the Desktop DNA Template Store

Desktop DNA templates can be thought of as policies defining the collection of settings and data from legacy workstations. Step-by-step instructions to create a template are provided in [“Using the DNA Template Editor to Create the Template” on page 19](#).

You create DNA templates on the staging workstation and then store them in a network location that is accessible to users. You can store the templates on the DNA server or on another NetWare® or Windows server.

The following sections contain more information:

- [Section 2.1.1, “Creating the Template Store on a NetWare Server,” on page 11](#)
- [Section 2.1.2, “Creating the Template Store on a Windows Server,” on page 12](#)

2.1.1 Creating the Template Store on a NetWare Server

- 1 Create a `\ddna` directory.

This directory will hold the ZENworks Personality executable file, DNA templates, and workstation DNA personality files. You should not use the `\sys:` volume to house the `\ddna` directory.

- 2 Copy the contents of the `\ddnarun` directory from the *ZENworks Personality Migration* CD into the `\ddna` directory on your server.
- 3 Create a `\ddna\templates` directory to be used as the storage location for Desktop DNA templates.

- 4 Provide users with Read and File Scan rights to this directory.
- 5 Provide OS and migration administrators with Write rights, in addition to Read and File Scan rights to this directory.

2.1.2 Creating the Template Store on a Windows Server

- 1 Create a `\ddna` directory.
This directory will hold the ZENworks Personality executable file, DNA templates, and workstation DNA personality files. You should not use the `\sys :` volume to house the `\ddna` directory.
- 2 Copy the contents of the `\ddnarun` directory from the *ZENworks Personality Migration* CD into the `\ddna` directory on your server.
- 3 Create a `\ddna\templates` directory to be used as the storage location for Desktop DNA templates.
- 4 Share the `\ddna` directory as DDNA.
- 5 Provide users with basic Read permissions to this share.
- 6 Provide OS and migration administrators with Full Control permissions to this share.

2.2 Creating the Personality Migration Personality Store

A typical personality should be approximately 10-15 MB in size (assuming storage of Microsoft* Office settings, templates, and so forth). The size of the personality can grow to exceed 500 MB if user data is consolidated and relocated.

You should monitor the size and content of personalities and adjust templates as required.

Personalities can be stored anywhere, including the user home directory or Novell iFolder[®]. This guide discusses using a dedicated storage server for personality storage. Future integration solutions will include integration with NetWare and Windows user home directories and also Novell iFolder.

The following sections contain additional information:

- [Section 2.2.1, “Creating the Personality Store on a NetWare Server,” on page 12](#)
- [Section 2.2.2, “Creating the Personality Store on a Windows Server,” on page 12](#)

2.2.1 Creating the Personality Store on a NetWare Server

- 1 On a NetWare server that users have access rights to, create a `\ddna\data` directory.
- 2 Provide users with Read, File Scan, and Write rights to this directory.

We recommend that you use group membership to control access to this directory.

A typical corporate personality store should start with a minimum of approximately 15 GB storage for personalities. As mentioned above, you should closely monitor the personality size.

2.2.2 Creating the Personality Store on a Windows Server

- 1 On a Windows server that users have access rights to, create a `\ddna\data` directory.

- 2** Share the `\ddna\data` directory as DDNADATA.
- 3** Provide users with Read and Write permissions to this share.

We recommend that you use group membership to control access to this share.

Preparing Workstations for Personality Migration

The following sections contain information about this topic:

- [Section 3.1, “Personality Migration Management Workstation,” on page 15](#)
- [Section 3.2, “User Workstations,” on page 15](#)
- [Section 3.3, “User Login Restriction,” on page 16](#)

3.1 Personality Migration Management Workstation

The Novell® ZENworks® 7 Personality Migration management console is a Windows workstation typically used by the OS deployment and migration administrators. In addition to installing Personality Migration on this workstation, you should also install ConsoleOne® to allow management and creation of Desktop Management Application objects. For installation instructions for ConsoleOne, see the *Novell ZENworks 7 Desktop Management Installation Guide*.

In the previous version of ZENworks Personality Migration, in order to create a Personality Migration template that contained the application settings for all of the applications used in your organization, you were required to set up a staging workstation that had each corporate and line-of-business application locally installed. You then used this workstation to create a Desktop DNA template that defined the personality and application settings to be subsequently collected from individual workstations in your organization.

In ZENworks 7 Personality Migration, the Desktop DNA Template Editor is now included. This means that you no longer need to set up a workstation that has each corporate and line-of-business application locally installed. You can now use the Template Editor to define personality settings for most, if not all, of the applications used in your environment. For information about installing and using the Template Editor, see [Chapter 4, “Installing ZENworks Personality Migration,” on page 17](#) and [Chapter 5, “Using the DNA Template Editor to Create the Template,” on page 19](#).

3.2 User Workstations

In order to collect and apply workstation personalities using ZENworks Personality Migration, user workstations need to be able to access the \ddna directory you created in [“Preparing the Server for Personality Migration” on page 11](#).

User workstations must also have Microsoft XML parser 3 installed. Windows XP Professional workstations and workstations running Microsoft Internet Explorer 6 should already have XML parser 3 installed. If user workstations do not have XML parser 3 installed, you can download it at the [Microsoft Download Center \(http://www.microsoft.com/downloads/details.aspx?familyID=4a73fcf1-98eb-4709-829b-f4de94f5b5fe&displaylang=en\)](http://www.microsoft.com/downloads/details.aspx?familyID=4a73fcf1-98eb-4709-829b-f4de94f5b5fe&displaylang=en).

You can install the XML parser by creating a Desktop Management Application object to install the XML parser system.

3.3 User Login Restriction

The user whose workstation is to run `desktopdna.exe` must be logged in as a local workstation administrator whether `desktopdna.exe` is launched from the local machine or from a server location (whether run manually or from an Application object distributed by the Novell Application Launcher™).

Installing ZENworks Personality Migration

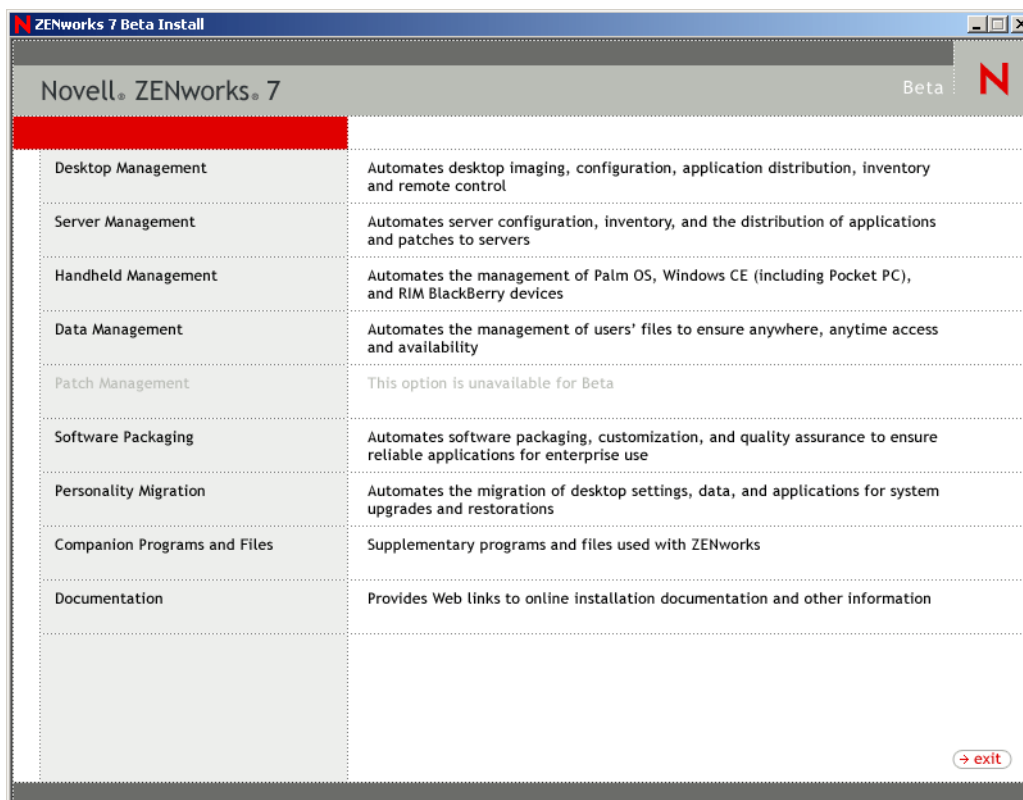
You can run Novell® ZENworks® 7 Personality Migration from a Windows server or from a Windows workstation. You use either the server or the workstation to open the Desktop DNA Template Editor to create the personality templates that will collect users' workstation personalities.

If you want to run the Desktop DNA Template Editor from a Windows server that is accessible to users, follow the directions in this section. If you want to install Personality Migration on a Windows server, you should install it in the \ddna directory that you previously created so that the program files, templates, and personality files are in one location. However, if you do not want to run the Template Editor from the server, the steps you performed in [Step 2](#) under [Section 2.1.2, “Creating the Template Store on a Windows Server,”](#) on page 12 copied the necessary files to the server.

You can also install Personality Migration on the Personality Migration management workstation from which you will create personality templates.

To install Personality Migration:

- 1 Insert the *Novell ZENworks 7 Personality Migration* program CD into the CD drive.



- 2 Click *Personality Migration*.
- 3 Click *ZENworks Personality Migration*.

- 4** Click *Install ZENworks Personality Migration*, review the information on the Welcome page, then click *Next*.
- 5** Review the license agreement, click *I Accept the Terms of the License Agreement*, then click *Next*.
or
If you do not agree with the terms of the license agreement, do not install the software.
- 6** Fill in the fields in the Customer Information page, then click *Next*.
- 7** Click the type of installation you want: *Typical*, *Compact*, or *Custom*, then click *Next*.
- 8** On the Ready to Install the Program page, click *Install*.
- 9** On the Select Options page, click the options you want: *View Readme*, *Run ZENworks Personality Migration*, or *Add Shortcut to Desktop*.
- 10** Click *Next*, then click *Finish*.

Using the DNA Template Editor to Create the Template

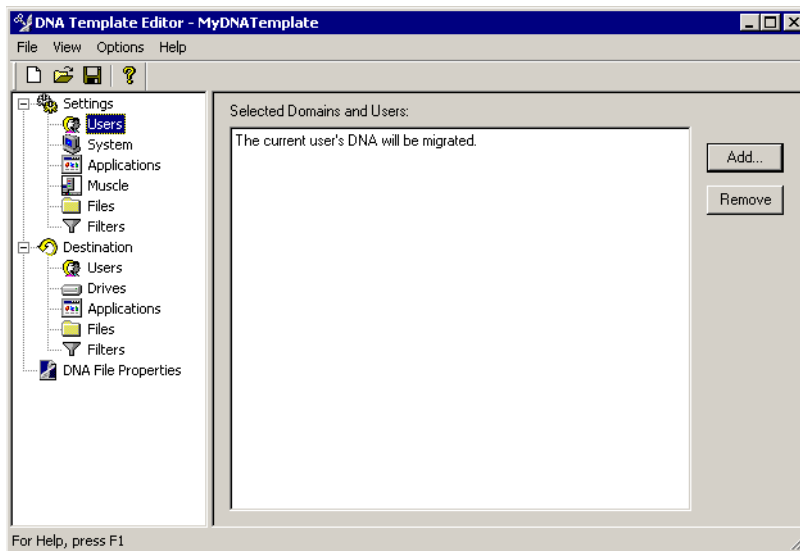
Each customer can have specific requirements for his or her personality migration. It is outside the scope of this guide to define the various implications and parameters for each migration.

The main factors that will drive the complexity and, ultimately, the size and scope of the personality migration, are whether the legacy environment is well managed, whether the customer has an existing standard operating environment (SOE), how many laptops and remote users are part of the migration project, and how much data is stored locally on workstations as opposed to network storage.

Desktop DNA templates can be thought of as policies defining the collection of settings and data from the legacy workstation.

To create the Desktop DNA template in the Template Editor:

- 1 Click *Start > Programs > Novell ZENworks Personality Migration > Migration Management Toolkit > DNA Template Editor*.



- 2 Configure the settings for your template:

NOTE: For detailed information about the Template Editor, see the online Help in the DNA Template Editor. The Help topics contain detailed information about the following settings:

- 2a (Optional) The *Users* setting lets you add or remove user profiles from your template. Unless you are a system administrator and logged into a system supporting multiple profiles, only the current user's settings are migrated. *Current User* is designated as the user who is logged into the computer at the time of the migration.

To add a user, click *Users* in the left pane of the Template Editor window, then click the *Add* button on the right side. You can use the *Domains*, *Local*, *Special*, and *Unlisted* tabs in the Add Users dialog box to select the user that you want to add.

If the user is not an administrator who is logged in during the migration, then you should not add any users to the template. You should simply use the default, which is the current user logged into the system at the time of the migration. If you are only going to migrate the *Current User*, do not add any users to the template.

- 2b** (Optional) The *System* setting lets you edit all the system settings listed in the right pane of the Template Editor window. To configure *System* settings, click *System* in the left pane of the Template Editor window, click the *Add* button on the right side, then select the desired settings.

You can expand the folders by clicking the plus sign (+) next to each item.

- 2c** (Optional) The *Applications* setting lets you edit application selections, such as applications, their settings, and their associated documents. To configure *Application* settings, click *Applications* in the left pane of the Template Editor window, click the *Add* button on the right side, then select the desired settings.

You can expand the folders by clicking the plus sign (+) next to each item.

- 2d** (Optional) The *Muscle* setting lets you migrate applications for which there are no scripts available. These are called Muscle Migrations.

Muscle Migration is disabled by default in ZENworks 7 Personality Migration. To re-enable it, you need to manually edit the `ddnaoptions.dox` file, which is not created until the first time you run Personality Migration. For information about how to edit this file, see [Section 5.1, “Re-enabling the Muscle Migration Function,” on page 20](#).

- 2e** (Optional) The *Files* setting lets you edit file and folder migration selections.

To configure *Files* settings, click *Files* in the left pane of the Template Editor window, click the *Add* button on the right side, then select the desired settings.

You can expand the folders by clicking the plus sign (+) next to each item.

- 2f** (Optional) The *Filters* setting lets you edit the filters you created to implement a search for files, folders, or drives.

To select *Filters* settings, click *Filters* in the left pane of the Template Editor window, click the *Add* button on the right side, then select the desired settings.

- 3** To create the Desktop DNA template, click *File > Save*.
- 4** Use the default template name, `mydnatemplate.dtf`, or give the template a descriptive name and save the file on the server in the `\ddna\templates` directory that you created in [Section 2.1, “Creating the Desktop DNA Template Store,” on page 11](#).
- 5** Click *Save*.

For the purposes of this guide, after you save the template, you are ready to create the Desktop Management Application objects to collect and apply the personality information. See [“Creating the Application Object to Collect the Personality” on page 23](#) and [“Creating the Application Object to Apply the Personality” on page 25](#) for more information.

- 6** Click *File > Exit*.

5.1 Re-enabling the Muscle Migration Function

Muscle Migration, the Desktop DNA Personality Migration function that lets you migrate applications that do not have scripts available, is disabled by default in ZENworks 7 Personality Migration. To re-enable it, you need to manually edit the `ddnaoptions.dox` file, an XML-formatted file created when you run Personality Migration the first time after installation.

NOTE: Re-enabling the Muscle function in Personality Migration affects only the Personality Migration interface and does not re-enable Muscle Migration in the template.

Use the following steps to manually edit the `ddnaoptions.dox` file after you run Personality Migration for the first time.

- 1** Navigate to the directory where Personality Migration is installed by default: `c:\program files\novell zenworks personality migration`.
- 2** In the installation directory, locate the `ddnaoptions.dox` file (this file is created the first time you start Personality Migration).
- 3** Right click the file, select *Open With*, select *Notepad* (or any other text editor).

NOTE: If you merely double-click the file, it opens in the default Web browser, which is not designed to be an editing tool.

The selected text editor opens `ddnaoptions.dox`.

- 4** In the *Command Line option* section (the first section) of the file, select */Disable MuscleMigrationDLG*, then delete this selection.
Make sure that you do not delete any tags (for example, `</Value>`) surrounding this text.
- 5** In the text editor, click *File > Save* to save the modified `ddnaoptions.dox` file in its installed location.

The next time you execute a migration, the Muscle function is enabled and ready to use.

Creating the Application Object to Collect the Personality

6

The Application object you create in the following steps collects the DNA personality from associated workstations and stores the DNA personality files on the network. You can use the DNA personality files to restore users' personality settings after upgrading to a new OS or replacing hardware, or you can store the DNA personality files in a network location as part of your disaster-recovery process.

To create the Application object:

- 1** In ConsoleOne®, right-click the container that you want to create the Application object in, click *New*, then click *Object*.
- 2** Click *Application*, then click *OK*.
- 3** In the New Application Object dialog box, select the *Simple Application* (No .AOT/.AXT/.MSI File) option, then click *Next*.
- 4** In the *Object Name* field, type a name for the Application object, for example CollectDNA, then click *Next*.
- 5** In the *Path to File* field, browse to or type the path to the location on the network from which the application's executable file (`desktopdna.exe`) will be run. Include the executable file in the path.

You need to enter a UNC path (with a server name or IP address).

- 6** Click *Next*, then define the system requirements that a workstation must meet before the application runs:
 - 6a** Click *Add*, then select the type of requirement you want to define.
 - 6b** Fill in the information for the requirement, then click *OK* to add the requirement to the list.
- 7** Click *Next*, then associate the Application object with the users or workstations on which you want the application to run:
 - 7a** Click *Add*, then browse for and select User or Workstation objects.

You can also select Group objects, Workstation Group objects, and container objects (Organizational Unit, Organization, or Country). If you select a container object, you are given the choice of associating all the container's User and/or Workstation objects with the application.
 - 7b** After you add the user or workstation to the list, click the *Force Run* check box.

Clicking the *Force Run* check box runs Desktop DNA as soon as Novell® Application Launcher™ or Workstation Helper starts and the CollectDNA Application object is run and the personality is taken.
- 8** Click *Next*, review the Application object settings, click the *Display Details After Creation* check box, then click *Finish*.
- 9** Click the *Run Options* tab, then click *Application*.
- 10** In the *Parameters* field, type the following:

```
%DDNA_ACTION% %DDNA_DATA%\%DDNA_USER%\%DDNA_WS% /T
%DDNA_SOURCE%\Templates\%DDNA_TEMPLATE% /X %DDNA_SILENT%
```

For example, using the sample directories explained above:

```
/D \\server1\vol\ddna\data\%DDNA_User%\%DDNA_WS% /T
\\server1\vol\ddna\templates\mydnatemplate.dtf /X %DDNA_SILENT%
```

The following table contains information about each switch used in this parameter.

Switch	Description	Parameters
/T	Uses a template to specify migration settings.	Template file to use for this migration. Use a UNC path to specify the location.
/M	Starts the migration.	
/X	Exits Desktop DNA ZENworks Edition when migration is completed unless an error occurred.	

The following table contains information about each CollectDNA macro in this parameter.

Macro	Value	Description
DDNA_ACTION	/D	Dumps or takes the personality of the workstation
DDNA_DATA	UNC path to ddnadata share or directory	Specifies the directory where the personality file will be copied to or retrieved from
DDNA_SILENT	/Q or Empty	/Q: Silently performs the action Empty: Provides a progress dialog box as the action is performed
DDNA_SOURCE	UNC path to ddnarun share or directory	Directory where the Desktop DNA executable is located
DDNA_TEMPLATE	Template file	Filename of the template file to use
DDNA_USER	%CN%	User name of the current user
DDNA_WS	%DNA_MACHINE_NAME%	Workstation machine name

- 11 Click *OK* to save the Application object information.

Creating the Application Object to Apply the Personality

To create an Application object to apply the personality to users' workstations, you copy the information from an existing Application object.

- 1 In ConsoleOne®, right-click the container that you want to create the Application object in, click *New*, then click *Object*.
- 2 Click *Application*, then click *OK*.
- 3 Click *An Application By Using an Existing Application Object*.
- 4 Click *Next*, then browse to and select the Application object you want to duplicate (in this example, the CollectDNA object).
- 5 Click *Next*.
- 6 In the *Object Name* field, type a descriptive name for the new object (ApplyDNA, for example), then click *Next*.
- 7 If necessary, define the system requirements that a workstation must meet before the application is distributed to it, then click *Next*.
- 8 Associate the Application object with the users or workstations that you want to distribute the application to, click the *Force Run* check box, then click *Next*.
- 9 Review the settings for the Application object, select the *Display Details After Creation* check box, then click *Finish*.
- 10 Click the *Run Options* tab, then click *Application*.
- 11 In the *Parameters* field, type the following:

```
%DDNA_ACTION% %DDNA_DATA%\%DDNA_USER%\%DDNA_WS% /T
%DDNA_SOURCE%\Templates\%DDNA_TEMPLATE% /X %DDNA_SILENT%
```

For example, using the sample directories explained above:

```
/A \\server1\vol\ddna\data\%DNA_User%\%DDNA_WS% /T
\\server1\vol\ddna\templates\mydnatemplate.dtf /X %DDNA_SILENT%
```

The parameter is the same as the parameter for the CollectDNA Application object except the /D (create the DNA file) switch has been replaced with the /A (apply the DNA file) switch.

The following table contains information about each switch used in this parameter:

Switch	Description	Parameters
/T	Uses a template to specify migration settings.	Template file to use for this migration.
/M	Starts the migration.	

Switch	Description	Parameters
/X	Exits Desktop DNA ZENworks Edition when migration is completed unless an error occurred.	

The following table contains information about each ApplyDNA macro in this parameter.

Macro	Value	Description
DDNA_ACTION	/A	Applies a personality to a workstation
DDNA_DATA	UNC path to the ddndata share or directory	Specifies the directory where the personality file will be copied to or retrieved from
DDNA_SILENT	/Q or Empty	/Q: Silently performs the action Empty: Provides a progress dialog box as the action is performed
DDNA_SOURCE	UNC path to the ddnarun share or directory	Directory where the Desktop DNA executable is located
DDNA_TEMPLATE	Template file	Filename of the template file to use
DDNA_USER	%CN%	User name of the current user
DDNA_WS	%DNA_MACHINE_NAME%	Workstation machine name

12 Click *OK* to save the Application object information.

Upgrading Personality Migration

8

Novell® ZENworks® 7 Personality Migration is powered by Unicenter Desktop DNA from Computer Associates. Desktop DNA now includes the Template Editor, which eases the process of creating desktop templates used for migrations. For a more detailed list of enhancements, see the Release Impact Guide ([releaseimpactguide.pdf](#)) in the /doc folder on the *Personality Migration* CD.

If you are upgrading Personality Migration, follow the installation instructions in “[Installing ZENworks Personality Migration](#)” on page 17. A prompt will notify you that the previous version will be uninstalled before proceeding with the new installation.

Documentation Updates

This section contains information on documentation content changes that have been made in the *Personality Migration Installation* guide since the initial release of Novell® ZENworks® 7 (August 26, 2005). The information will help you to keep current on updates to the documentation.

All changes that are noted in this section were also made in the documentation. The documentation is provided on the Web in two formats: HTML and PDF. The HTML and PDF documentation are both kept up-to-date with the documentation changes listed in this section.

The documentation update information is grouped according to the date the changes were published. Within a dated section, the changes are alphabetically listed by the names of the main table of contents sections for ZENworks 7 Personality Migration.

If you need to know whether a copy of the PDF documentation you are using is the most recent, the PDF document contains the date it was published on the front title page or in the Legal Notices section immediately following the title page.

The documentation was updated on the following dates:

- [Section A.1, “December 9, 2005,” on page 29](#)

A.1 December 9, 2005

The page design in the guide was reformatted to comply with revised Novell documentation standards.

