

Novell NetDrive

4.1

May 29, 2006

USER GUIDE

www.novell.com



Novell[®]

Legal Notices

Novell, Inc. makes no representations or warranties with respect to the contents or use of this documentation, and specifically disclaims any express or implied warranties of merchantability or fitness for any particular purpose. Further, Novell, Inc. reserves the right to revise this publication and to make changes to its content, at any time, without obligation to notify any person or entity of such revisions or changes.

Further, Novell, Inc. makes no representations or warranties with respect to any software, and specifically disclaims any express or implied warranties of merchantability or fitness for any particular purpose. Further, Novell, Inc. reserves the right to make changes to any and all parts of Novell software, at any time, without any obligation to notify any person or entity of such changes.

Any products or technical information provided under this Agreement may be subject to U.S. export controls and the trade laws of other countries. You agree to comply with all export control regulations and to obtain any required licenses or classification to export, re-export, or import deliverables. You agree not to export or re-export to entities on the current U.S. export exclusion lists or to any embargoed or terrorist countries as specified in the U.S. export laws. You agree to not use deliverables for prohibited nuclear, missile, or chemical biological weaponry end uses. Please refer to www.novell.com/info/exports/ for more information on exporting Novell software. Novell assumes no responsibility for your failure to obtain any necessary export approvals.

Copyright © 2006 Novell, Inc. All rights reserved. No part of this publication may be reproduced, photocopied, stored on a retrieval system, or transmitted without the express written consent of the publisher.

Novell, Inc. has intellectual property rights relating to technology embodied in the product that is described in this document. In particular, and without limitation, these intellectual property rights may include one or more of the U.S. patents listed at <http://www.novell.com/company/legal/patents/> and one or more additional patents or pending patent applications in the U.S. and in other countries.

Novell, Inc.
404 Wyman Street, Suite 500
Waltham, MA 02451
U.S.A.
www.novell.com

Online Documentation: To access the online documentation for this and other Novell products, and to get updates, see www.novell.com/documentation.

Novell Trademarks

For Novell trademarks, see the [Novell Trademark and Service Mark list \(http://www.novell.com/company/legal/trademarks/tmlist.html\)](http://www.novell.com/company/legal/trademarks/tmlist.html).

Third-Party Materials

All third-party trademarks are the property of their respective owners.

Contents

About This Guide	7
1 Overview of NetDrive	9
1.1 Benefits of NetDrive	9
1.2 When to Use NetDrive to Access an iFolder Server	9
1.3 When to Use NetDrive with Novell NetStorage to Access a NetWare Server	10
1.4 What's New	11
2 Using NetDrive	13
2.1 Workstation Requirements	13
2.2 Installing NetDrive	13
2.3 Mapping a Drive	13
2.4 Disconnecting a Mapped Drive	17
2.5 Modifying Files	17
2.6 Using Advanced Settings	18
3 Additional NetDrive Tips	23
4 Using NetDrive and iFolder in a Thin-Client Environment	25
4.1 Installing NetDrive on a Terminal Server	26
4.2 Using NetDrive	26
A Troubleshooting NetDrive Problems	27
A.1 FTP Problems	27
B Documentation Updates	29
B.1 May 29, 2006	29

About This Guide

This guide describes how to install and configure Novell® NetDrive 4.1. It is intended for users and is divided into the following sections:

- Chapter 1, “Overview of NetDrive,” on page 9
- Chapter 2, “Using NetDrive,” on page 13
- Chapter 3, “Additional NetDrive Tips,” on page 23
- Chapter 4, “Using NetDrive and iFolder in a Thin-Client Environment,” on page 25
- Appendix A, “Troubleshooting NetDrive Problems,” on page 27
- Appendix B, “Documentation Updates,” on page 29

Additional Documentation

For information about emerging issues, see

- *Novell NetDrive 4.1 Readme*
- Novell Support Knowledgebase Web site (<http://search.novell.com/NSearch/SearchServlet?template=ResultListTerseTemplate.html&numhits=20&theme=support&query=netdrive&collection=Support>)

Documentation Updates

For the most recent version of the *Novell NetDrive 4.1 User Guide*, see the [Novell iFolder® 2.1 documentation Web site \(http://www.novell.com/documentation/lg/ifolder21\)](http://www.novell.com/documentation/lg/ifolder21).

Documentation Conventions

In this documentation, a greater-than symbol (>) is used to separate actions within a step and items in a cross-reference path.

A trademark symbol (®, ™, etc.) denotes a Novell trademark. An asterisk (*) denotes a third-party trademark.

When a single pathname can be written with a backslash for some platforms or a forward slash for other platforms, the pathname is presented with a backslash. Users of platforms that require a forward slash, such as UNIX*, should use forward slashes as required by your software.

Overview of NetDrive

1

Novell® NetDrive 4.1 is a client application that uses Internet protocols to connect your Windows* workstation across public or private networks to a NetWare® 6.x server. NetDrive also connects workstations to a Novell iFolder® server, which can be hosted on a variety of operating platforms.

This overview provides the following information about NetDrive:

- [Section 1.1, “Benefits of NetDrive,” on page 9](#)
- [Section 1.2, “When to Use NetDrive to Access an iFolder Server,” on page 9](#)
- [Section 1.3, “When to Use NetDrive with Novell NetStorage to Access a NetWare Server,” on page 10](#)
- [Section 1.4, “What’s New,” on page 11](#)

1.1 Benefits of NetDrive

NetDrive enables you to easily map your server directory as a drive on your local workstation. It is not necessary to install Novell Client or iFolder Client on your workstation to access your network files or iFolder files.

Because NetDrive is strictly a client application that is installed on the workstation (except for in a thin-client environment), there is no server installation or application management needed.

NetDrive is easy to install and use. To map a drive using NetDrive:

- Install NetDrive on your Windows workstation.
- Activate your Internet connection; you do not need a Web browser.
- Know the DNS name (such as svr1.your_domain_name.com) or IP address (such as 192.168.1.1) of your NetWare 6.x server or your iFolder server.
- (iFolder server only) Your network administrator must enable your user ID for iFolder services. If the first time you log in to iFolder server is through NetDrive and if your administrator sets up iFolder for encryption, NetDrive requires you to log in to the iFolder server using both a password and passphrase. For information, see the *Novell iFolder 2.1 User Guide*.

After a drive is mapped, the drive letter that you assigned during the mapping appears in Windows Explorer. The drive functions just like LAN drives that are mapped through the Novell Client™ or through Windows Explorer.

1.2 When to Use NetDrive to Access an iFolder Server

NetDrive is an alternate way to access the iFolder server when no iFolder client is available, or when you need to access more than one iFolder account from a single workstation. Using NetDrive to access your iFolder files would be more efficient than viewing iFolder files using a Web browser in many circumstances, such as the following:

- On a thin-client workstation that does not have adequate resources to manage local copies of all your iFolder files.

For more information and instructions, see [Chapter 4, “Using NetDrive and iFolder in a Thin-Client Environment,”](#) on page 25.

- In a shared computing environment, such as a university, where multiple users access their personal iFolder accounts from the same computer.
- If you have multiple iFolder accounts and want to use more than one account at the same time from the same workstation.

Mapping a drive with NetDrive enables you to work with files stored on the iFolder server similar to the way you do with files stored on the network. NetDrive transparently downloads a local copy for viewing or modification, but writes the files to the server instead of the local workstation when you save the file. A permanent local copy is not saved to the workstation unless you choose to enable a NetDrive mirroring option. For details, see [Section 2.5, “Modifying Files,”](#) on page 17.

With NetDrive, you can easily view and browse files with Windows Explorer instead of a Web browser. You do not need to manually upload and download files as is required with a Web browser. Because the files remain on the iFolder server, you do not need to delete the files from the local hard drive at the end of the session. NetDrive deletes the temporary local directory it created when you log out of NetDrive.

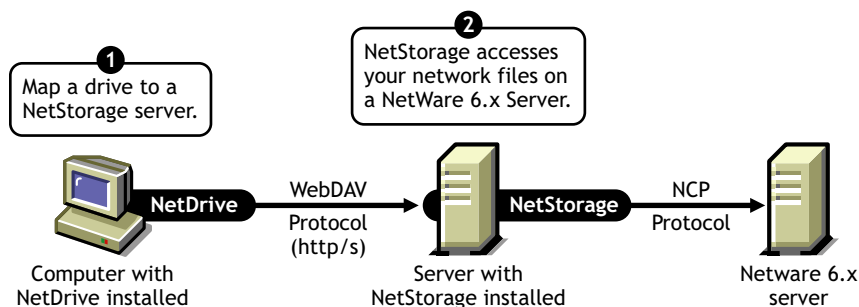
For more information on iFolder, see the [Novell iFolder documentation \(http://www.novell.com/documentation/lg/ifolder21\)](http://www.novell.com/documentation/lg/ifolder21).

1.3 When to Use NetDrive with Novell NetStorage to Access a NetWare Server

If you want to access NetWare storage without using the Novell Client, one of your options is to use NetDrive to access NetWare storage via Novell NetStorage.

In this scenario, NetDrive lets you use Internet-friendly protocols (WebDAV over HTTP) to map a drive to a NetWare server through NetStorage. NetStorage accesses the NetWare server using Novell Core Protocol (NCP™), reads your login script, then displays all of your mapped drives and files from one central location.

Figure 1-1 Using NetDrive and NetStorage to Access Your Files



After you map a drive to the server, Windows Explorer appears and the drive letter that you mapped through NetDrive appears and functions like normal drives that are mapped using the Novell Client. The only difference is that all of the drives that you mapped through the Novell Client now appear as folders in Windows Explorer. So, with just *one* drive mapping you can access all of your data that you might otherwise have accessed through multiple drive letters using the Novell Client.

For more information about NetStorage, see the *Novell NetStorage Administration Guide* (<http://www.novell.com/documentation/lg/nw65/index.html>).

1.4 What's New

NetDrive now supports iFolder 2.1, in addition to supporting earlier versions of iFolder.

Using NetDrive

2

This section covers the following tasks:

- [Section 2.1, “Workstation Requirements,” on page 13](#)
- [Section 2.2, “Installing NetDrive,” on page 13](#)
- [Section 2.3, “Mapping a Drive,” on page 13](#)
- [Section 2.4, “Disconnecting a Mapped Drive,” on page 17](#)
- [Section 2.5, “Modifying Files,” on page 17](#)
- [Section 2.6, “Using Advanced Settings,” on page 18](#)

2.1 Workstation Requirements

- NetDrive supports the Windows 95/98/Me, Windows NT* 4/2000, and Windows XP operating systems.
- You need 2 MB of available space on the hard drive of your Windows workstation to install and run NetDrive.
- (Windows 95 only) Download and install the Winsock 2 update from Microsoft* before installing NetDrive.
Download the update from the [Microsoft Web site \(http://www.microsoft.com/Windows95/downloads/contents/WUAdminTools/S_WUNetworkingTools/W95Sockets2/Default.asp\)](http://www.microsoft.com/Windows95/downloads/contents/WUAdminTools/S_WUNetworkingTools/W95Sockets2/Default.asp).
- (Windows NT 4/2000 only) Disable the F-Secure or KasperSky antivirus software when you use NetDrive; otherwise, your workstation might hang.

2.2 Installing NetDrive

- 1 Locate your NetDrive program file.

If you purchased NetWare 6.x, netdrive.exe is located in the NetDrive directory at the root of the *Novell Client™ Software* CD. Otherwise, the executable shipped with the Novell iFolder® software.

- 2 Double-click netdrive.exe, then follow the on-screen instructions.

NetDrive places an icon in the system tray of your workstation.

After installing the software, continue with the next section, [“Mapping a Drive.”](#)

2.3 Mapping a Drive

Before mapping a drive, you must meet these prerequisites:

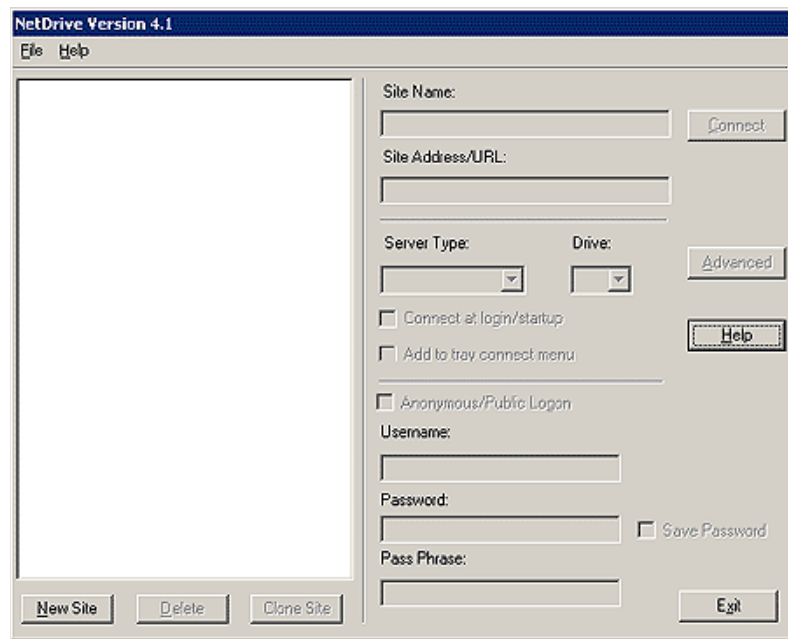
- Install NetDrive on your Windows workstation. (For installation instructions, see [Section 2.2, “Installing NetDrive,” on page 13.](#))
- (iFolder server only) Your administrator must enable your username for iFolder services.
- Activate your Internet connection; you do not need a Web browser.

To map a drive to your NetWare 6.x server or to your iFolder server:

- 1** Contact your network administrator or iFolder administrator to get the following information:
 - The server address (the DNS name or IP address of your server)
 - The protocol your server is using: iFolder, FTP, WebDAV (HTTP), or WebDAV plus SSL (HTTPS)
 - The login method your server requires (anonymous/public login or username/password/encryption passphrase)
- 2** Open NetDrive using one of these methods:
 - Double-click the NetDrive icon in your system tray.
 - Click the Start menu > Programs > NetDrive, then click the NetDrive icon.

When you open NetDrive, the NetDrive main window appears, as shown in the following example:

Figure 2-1 NetDrive Main Window



- 3** Create a NetDrive site that you will use to map this server.

NetDrive uses sites to visually organize the drives that you map with the NetDrive software. A NetDrive site represents a location on the target server that contains a collection of your directories and files. (In this case, the word *site* does not refer to a Web site.)

3a Click New Site.

3b Type the name of your site into the New Site dialog box.

A site name is simply a way for you to make your mapped drives unique and personal. There are no naming conventions that you must follow here.

3c Specify the server address that you want to connect to.

A server address can be a DNS name or an IP address that serves as the URL of the server.

- (iFolder only) Use only the servername, such as

nifl.your-domain-name.com

- (FTP only) Use the full URL of the server address, such as
ftp://svr1.your-domain-name.com
- (WebDAV only) Use the full URL of the server address, such as
http://192.168.1.1
- (WebDAV + SSL only) Use the full URL of the server address, such as
https://svr1.your-domain-name.com

If you are connecting to Novell NetStorage, use the following text-based Web interface URL:

https://svr1.your-domain-name.com:portnumber/oneNet/NetStorage

IMPORTANT: This URL is case sensitive.

In each example above, replace *nifl.your-domain-name.com*, *svr1.your-domain-name.com*, or *192.168.1.1* with your actual server's DNS name or IP address. Replace *portnumber* with the actual assigned port number such as 51443.

A DNS name is a unique name that is given to a Web server in addition to the server's IP address. The advantage of using a DNS name is that it is easier to remember and it does not change often, unlike IP addresses. For example, <http://www.novell.com> is a DNS name.

3d Click Finish.

When the drive is mapped, a server icon followed by the name of your site appears in the left pane of the NetDrive main windows.

IMPORTANT: After a site is created, the interface will select some default properties for you. Do not assume that these properties will automatically work with the server address that you've entered.

- 4** Select the Internet protocol that the server is running from the Server Type drop-down list. Use the protocol that you got from your administrator in [Step 1 on page 14](#).

The following table shows what Windows operating systems each Internet protocol supports:

Internet Protocol	Windows Operating System
iFolder	Windows NT 4/2000 Professional Windows XP Home and Professional
FTP	Windows 95/98/ME Windows NT 4/2000 Professional Windows XP Home and Professional
WebDAV (HTTP)	Windows 95/98/ME Windows NT 4/2000 Professional Windows XP Home and Professional
WebDAV + SSL (HTTPS)	Windows NT 4/2000 Professional Windows XP Home and Professional

- 5** Select a drive letter from the Drive drop-down box.

- 6 Check the Connect at Login/Startup check box if you want to connect to the server when you reboot your computer.

If you select this option, the drive that you've mapped using NetDrive will automatically connect to the server every time you boot your computer.

- 7 Determine whether you want to add the mapped drive to the Tray Connect menu.

The Tray Connect menu enables you quickly connect to your favorite NetDrive sites without opening the NetDrive main window.

Figure 2-2 NetDrive System Tray Icon



- 8 Determine what method you need to use to log in to your server.

IMPORTANT: iFolder uses RSA* encryption to encrypt the username and password and Blowfish* encryption to encrypt the user data for transfer data across the wire and for storage on the iFolder server. WebDAV can use HTTPS for security, and FTP does not offer any security when transferring data across the wire.

- **Anonymous/Public login:** Use this when connecting to an FTP server that allows anonymous/public login. If the FTP server does not support anonymous/public login, you must enter a username and password.
- **Username and password:** Use this when connecting to a server that does not support anonymous/public login.
- **(iFolder server only) Passphrase:** This field represents the iFolder encryption passphrase. Enter the iFolder passphrase that you used when you first logged in to the iFolder server with the iFolder client and initialized your iFolder account.

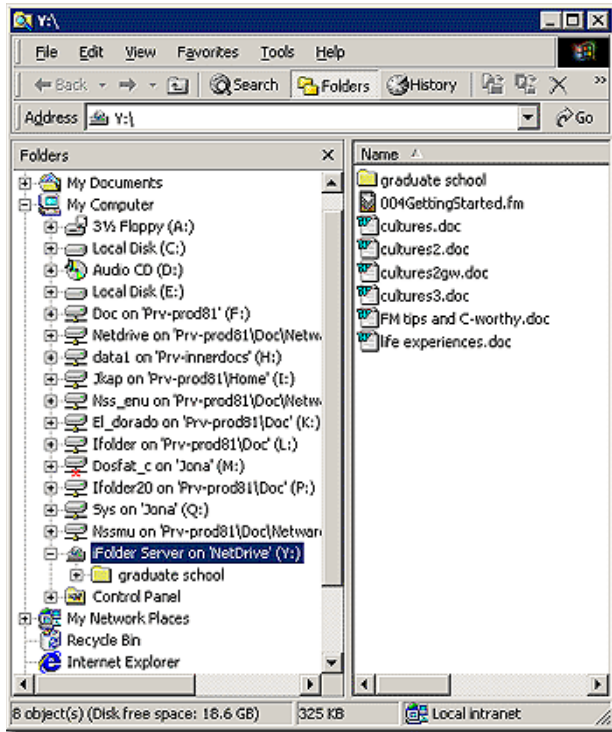
- 9 Click Connect.

After NetDrive has successfully connected to the server, the Monitor dialog box appears. It provides you with connection status, file transfer statistics, and a connection log.

Next, Windows Explorer appears with the drive letter and NetDrive site name appearing in the left pane.

The following graphic shows how a mapped drive appears in Windows Explorer:

Figure 2-3 Mapped Drive Appears in Windows Explorer



TIP: If you have problems getting a directory listing or connecting to a NetWare 6.x server running FTP, enter the IP address of the server instead of the URL. If the problem persists, enable passive mode by clicking Advanced > PASV - Passive Mode > OK in the NetDrive main window. Then try connecting to the Web server again.

For FTP troubleshooting tips, see [“Troubleshooting NetDrive Problems” on page 27](#).

2.4 Disconnecting a Mapped Drive

You can delete a NetDrive site at any time; however, this will not affect your drive mappings in Windows Explorer.

To disconnect the mapped drive, right-click the mapped drive icon in Windows Explorer, then click Disconnect.

2.5 Modifying Files

As soon as NetDrive maps the drive, Windows Explorer launches and the drive letter that you mapped appears in the left pane.

You can modify your files just as you would when mapping a drive with the Novell Client or the Windows Explorer Map Network Drive function. While you are working on a file, NetDrive transparently downloads the file to your workstation and then uploads the file each time you save your changes.

IMPORTANT: NetDrive also lets you mirror the files that are uploaded and downloaded to your computer. That way, if the connection is lost during a file transfer, you have a local copy of your changes on your workstation and no data is lost. To enable the mirroring feature, open the NetDrive Main window, then click Advanced > General.

2.6 Using Advanced Settings

NetDrive lets you configure downloading, caching, and file locking properties for your NetDrive site.

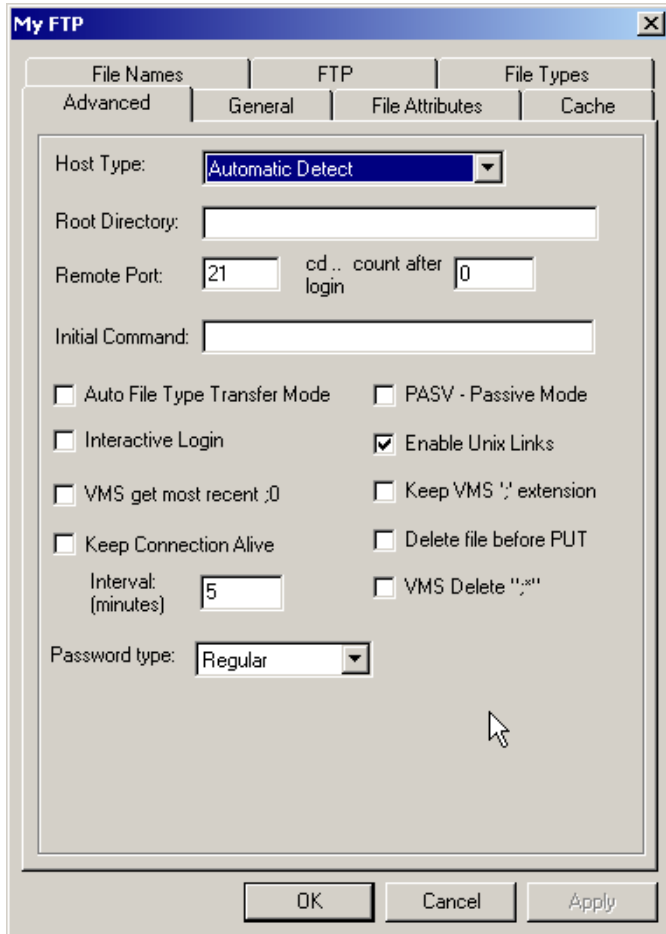
To configure advanced settings:

- 1 Open the NetDrive main window (shown in [Figure 2-1 on page 14](#)).
- 2 Select a NetDrive site from the Site list.
- 3 Click Advanced.

This opens an Advanced Settings dialog box for the selected NetDrive site. Each Advanced Settings dialog box differs, depending on whether the NetDrive site connects to an FTP server, an iFolder server, or a WebDAV server.

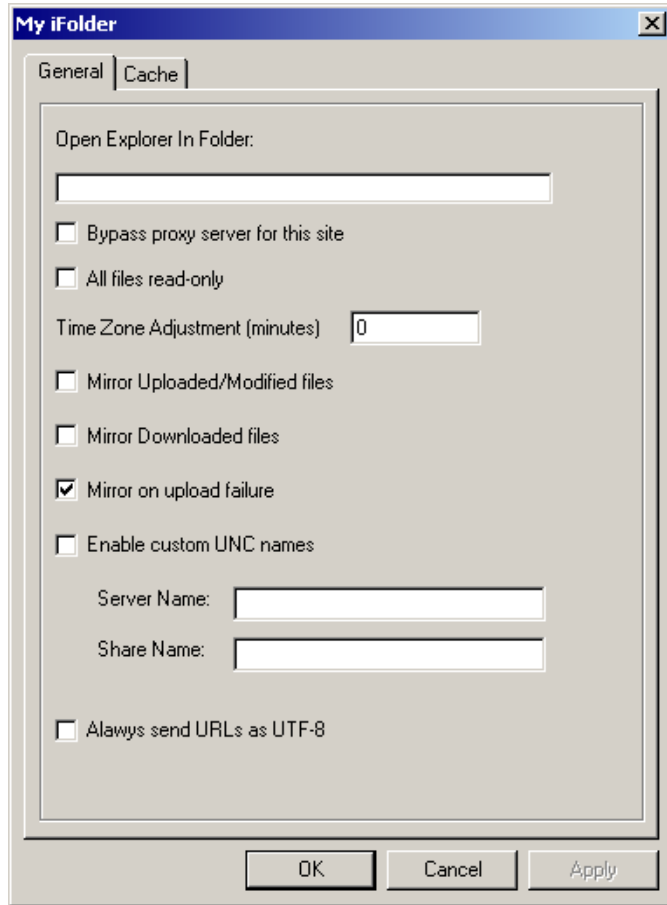
If the NetDrive site connects to an FTP server, NetDrive opens the FTP Site Advanced Settings dialog box, shown below. In this dialog, click the different tabs to configure Advanced, General, File Attributes, Cache, File Names, FTP, and File Types parameters.

Figure 2-4 FTP Site Advanced Settings Dialog Box



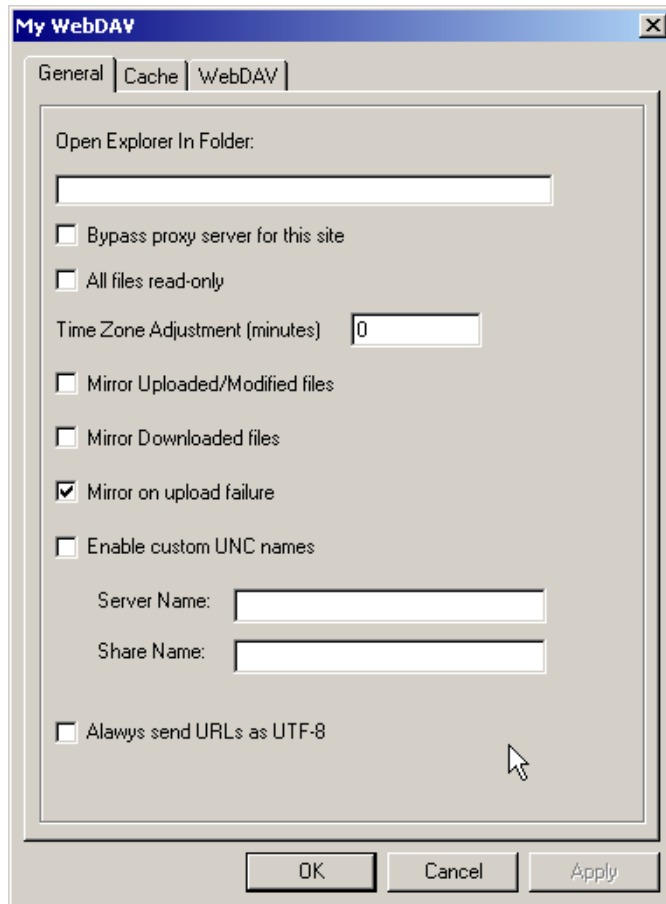
If the NetDrive site connects to an iFolder server, NetDrive opens the iFolder Site Advanced Settings dialog box, shown below. In this dialog, click the different tabs to configure General and Cache parameters.

Figure 2-5 iFolder Site Advanced Settings Dialog Box



If the NetDrive site connects to a WebDAV server, NetDrive opens the WebDAV Site Advanced Settings dialog box, shown below. In this dialog, click the different tabs to configure General, Cache, and WebDAV parameters.

Figure 2-6 *WebDAV Site Advanced Settings Dialog Box*



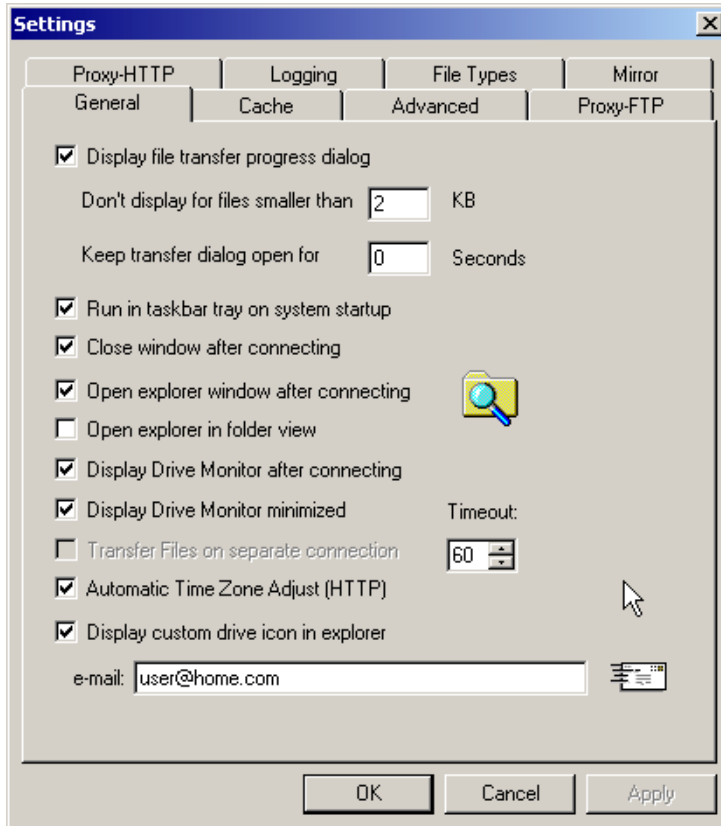
NetDrive also lets you configure general NetDrive properties.

To configure general settings:

- 1** Open the NetDrive main window (shown in [Figure 2-1 on page 14](#)).
- 2** Select a NetDrive site from the Site list.
- 3** Do one of the following:
 - Click File > Program Settings.
 - Right-click the NetDrive icon in the system tray, then click Program Settings.

This opens a General Settings dialog box for the selected NetDrive site. In this dialog, click the different tabs to configure General, Cache, Advanced, Proxy-FTP, Proxy-HTTP, Logging, File Types, and Mirror parameters.

Figure 2-7 NetDrive General Settings Dialog Box



For more information about any of these property dialogs, refer to the NetDrive Web Help system. To access the help system, right-click the NetDrive icon in the system tray, then click Help Topics, or click the Help button in the NetDrive main window.

Additional NetDrive Tips

3

The following tips provide some important information that your users might need to know when using Novell® NetDrive 4.1. Review and convey the appropriate information to your users.

Mapping a Drive

In order to access files through NetDrive, your users will need to know the following information about entering a server address:

- If you omit FTP or HTTP from the URL, NetDrive defaults to FTP.
- To override the port for HTTP servers, append the port number to the end of the URL. For example, this URL

```
http://www.someserver.com:8888
```

specifies a port of 8888.

- You can map a drive to a specific directory or volume only if you are using the WebDAV protocol. Otherwise, you must map a drive directly to the server.
- You can map a drive to a virtual server but not to a Directory object.

Specifying a Server Protocol

The Internet uses different protocols to access different servers. In order to connect to the server via the Internet, you need to know which protocol your server is using.

NetDrive supports the following protocols:

- **iFolder**

Use this protocol if you are connecting to a Novell iFolder® server. When mapping a drive with this protocol, specify only the IP address or DNS name of your server. Do not include `http://` or any other prefix.

The iFolder client lets you log in to only one account at any given time; however, if you have NetDrive installed, you can log in to your first iFolder account on your workstation and then use NetDrive to map a drive to your iFolder server and access the files in your second account at the same time and from the same workstation.

You can also connect to an iFolder server in a thin-client environment. For more information, see [Chapter 4, “Using NetDrive and iFolder in a Thin-Client Environment,” on page 25](#).

- **FTP**

FTP (File Transfer Protocol) is a common protocol used to transfer files via the Internet.

IMPORTANT: Because FTP does not support the Change Mode command (`chmod`), it is impossible to use NetDrive to delete Read-only files from an FTP server.

- **WebDAV**

WebDAV (Web-based Distributed Authoring and Versioning) is a set of extensions to the HTTP protocol which lets users collaboratively edit and manage files located on Web servers. For information about WebDAV, see the [WebDAV Web site \(http://www.webdav.org\)](http://www.webdav.org).

Using NetDrive and iFolder in a Thin-Client Environment

4

In a thin-client environment, most applications, like Novell® NetDrive 4.1, are installed on the server. This allows mobile users to access their applications from a virtual desktop or thin-client session. However, because of the Novell iFolder® automatic synchronization features, you can't install iFolder on the thin-client server. It would cause all of the user data to sync down to the thin-client server's hard drive.

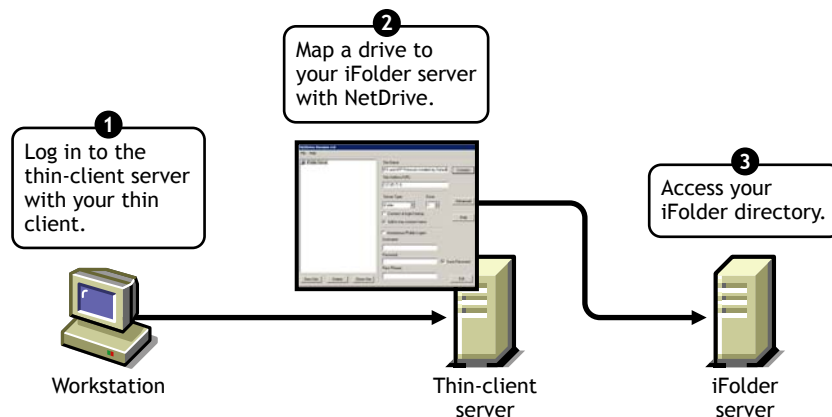
NetDrive supports Windows NT 4 and 2000 servers running any of the following thin-client applications:

- Terminal Services Client
- Citrix* MetaFrame*
- ZENworks® OnDemand Services™

IMPORTANT: Novell NetDrive 4.0 supports mapping drives via ZENworks OnDemand Services only to iFolder 1.0 servers. Novell NetDrive 4.1 supports mapping drives via ZENworks OnDemand Services to both iFolder 1.0 and 2.x servers.

After NetDrive is installed on your thin-client server, a mobile user can use NetDrive to map a drive to the iFolder server, thereby making the iFolder server's copy of his iFolder data accessible via Windows Explorer. (For a visual representation of how this looks, see [Step 9 on page 16.](#))

Figure 4-1 Using NetDrive to Access Your iFolder Files



If you are familiar with iFolder, you know that it has a Java* applet that lets users access their files from a browser. So, why map a drive to get to your files when you can just open up a browser? The advantages of using NetDrive over a browser in this situation are as follows:

- While a drive is mapped to your iFolder server, you can modify your files without manually downloading and uploading them from your local workstation to the iFolder server. With NetDrive, the downloading and uploading activities are transparent to the user. If you access your iFolder files through a browser, you must manually upload and download your files.

- At the end of your iFolder session, you must delete the files you worked on from the local workstation. This is not the case with NetDrive.
- NetDrive lets you use Windows Explorer to easily view and browse your files.

For instructions on how to use NetDrive on your thin-client server to access your iFolder files, continue with the next section, “[Installing NetDrive on a Terminal Server.](#)”

For more information on iFolder, see the [Novell iFolder documentation \(http://www.novell.com/documentation/lg/ifolder21\)](http://www.novell.com/documentation/lg/ifolder21).

4.1 Installing NetDrive on a Terminal Server

- 1 Ensure that you have at least 3 MB of available space on your server.
- 2 Do one of the following:
 - If you purchased NetWare 6.x, insert the *Novell Client Software* CD into your server. Netdrive.exe is located in the NetDrive directory at the root of the CD.
 - If you purchased iFolder, copy the netdrive.exe that shipped with the iFolder 1.0/2.0/2.1 software to a directory on your server.
- 3 From the server, click Start > Settings > Control Panel > Add/Remove Programs > Add New Program.
- 4 Browse to the location of the netdrive.exe file on your server, then follow the on-screen instructions.

4.2 Using NetDrive

- 1 Initiate your thin-client session on your workstation.
- 2 While in the thin-client session, open NetDrive and map a drive.
For instructions, see [Section 2.3, “Mapping a Drive,” on page 13.](#)

Troubleshooting NetDrive Problems

A

This section discusses the following troubleshooting issues:

- “FTP Problems” on page 27

A.1 FTP Problems

Refer to the following troubleshooting tips that might help if your users encounter FTP errors when trying to access or modify their files on an FTP server.

- “FTP Connection Fails” on page 27
- “Cannot Map a Network Drive to a Windows FTP Server” on page 28
- “ZoneAlarm Causes TCP Connection Errors” on page 28
- “Cannot Create Microsoft Word Files on a Mapped Drive” on page 28
- “Cannot Create a Directory in Windows Explorer” on page 28
- “Cannot Copy a File from an FTP-Mapped Drive” on page 28
- “Stray Files Revealed on the NetWare FTP Server” on page 28
- “Cannot Rename Files on the FTP Server” on page 28

FTP Connection Fails

Problem: NetDrive cannot connect to an FTP server.

Explanation: Connection errors are caused by different variables.

Action: Check the following:

- Your username and password are correct. These are case sensitive.
- Your Internet connection is still active.
- Your URL is entered correctly.

For anonymous logins, specify an e-mail address because many FTP servers require the e-mail address as the password.

To specify an e-mail address: In the NetDrive Main Window, click File > Program Settings > General.

- If the directory listing is empty for your FTP site, try flushing the directory cache.

To do this: In the NetDrive Main Window, click File > Program Settings > Cache > Flush Directory Listing upon Each Connection.

If the problem persists, change the server type from Auto Detect to the actual server type. To do this, click your FTP site in the NetDrive Main Window, then click > Advanced > Advanced > Host Type.

Cannot Map a Network Drive to a Windows FTP Server

Problem: Users cannot map a network drive to a Windows FTP server.

Action: Your administrator needs to remove a statement in the config.sys file on the Windows FTP server. To do this: Use a text editor to remove the lastdrive=g statement in the FTP server's config.sys file, save the file, then restart the server.

ZoneAlarm Causes TCP Connection Errors

Problem: Users get a TCP connection error when ZoneAlarm is enabled.

Action: ZoneAlarm* is not disabled. Make sure the security level on ZoneAlarm is set to medium or is disabled completely.

For more information, see [Section 2.5, "Modifying Files,"](#) on page 17.

Cannot Create Microsoft Word Files on a Mapped Drive

Problem: Users cannot create files using Microsoft Word on the mapped drive on the FTP server.

Possible Cause: Your FTP server might not support filenames that have a tilde (~).

Action: You need to configure NetDrive to remove or replace tildes when connecting to your FTP Web server.

To configure NetDrive: Select your FTP site in the NetDrive Main Window, click Advanced > File Names.

Cannot Create a Directory in Windows Explorer

Problem: Users cannot create a directory in Windows Explorer.

Possible Cause: Your FTP server might not support spaces in filenames.

Action: Make sure your directory names have no spaces in them.

Cannot Copy a File from an FTP-Mapped Drive

Problem: Users cannot copy a file from an FTP-mapped drive.

Action: Check the Drive Monitor Log window for FTP/HTTP status responses.

Stray Files Revealed on the NetWare FTP Server

Problem: Users find a stray file of yours on the NetWare FTP server.

Possible Cause: Your directory cache might not be flushed.

Action: To flush your directory cache: In the NetDrive main window, click File > Program Settings > Cache > Flush Directory Listing upon Each Connection.

Cannot Rename Files on the FTP Server

Problem: Users cannot rename their files on the FTP server.

Possible Cause: Your FTP server might not support this functionality.

Documentation Updates

B

This section contains information about documentation changes made to the *Novell NetDrive User Guide*.

B.1 May 29, 2006

- Added an appendix with Documentation Updates information.
- The entire guide was reformatted to comply with revised Novell® documentation standards. The content is unchanged.