



Automate Migrations to Linux* with the GroupWise® Server Migration Utility

As a Novell® GroupWise® user, you're already accustomed to serious security and unbeatable reliability. But you may be interested in the added efficiencies of running GroupWise on Linux. The GroupWise Server Migration Utility will help you make the transition smoothly, with minimal system downtime and without requiring significant Linux* expertise.

Growing Collaboration on Linux

From low-cost, Intel-based hardware and consolidation opportunities to the wealth of open source software and freedom from vendor lock-in, the benefits of Linux are significant. And because collaboration is an ideal platform for realizing these efficiencies, Linux is growing significantly as a collaboration server host platform. In fact, IDC predicts that between 2004 and 2009, integrated collaborative environments (aka groupware) running on Linux will demonstrate a compound annual growth rate of 31 percent. (IDC, "Worldwide Integrated Collaborative Environments 2005-2009 Forecast: Finding Opportunities in Cracks in the Ceiling of the ICE Market," April 2005).

To help you experience the full benefits of collaboration on Linux, Novell has developed the GroupWise Server Migration Utility. This utility quickly and easily transfers GroupWise agents, domains, post offices and data from a NetWare® or Windows* server to a Linux

server. It also helps you minimize downtime and limit disruptions to user productivity.

Easy Migration

Instead of using a manual process, which may require Linux command-line interaction, you can use a wizard-like utility to guide you through the migration process. You simply identify the relevant components (Post Office agents, Message Transfer agents, Monitor agent and so forth) to be migrated from your NetWare or Windows server to your Linux server. The utility then installs necessary software, configures the agents and migrates the data—all in real time. The process is flexible, allowing you to choose which components to migrate and when. The process also includes built-in redundancies. During the initial transfer, the software, settings and agents on your original server are maintained, ensuring consistent uptime and enabling you to continue running GroupWise on the original server.

■ Solutions:

Workgroup

■ Products:

Novell GroupWise 7

IDC predicts that between 2004 and 2009, integrated collaborative environments (also known as groupware) running on Linux will demonstrate a compound annual growth rate of 31 percent.

IDC, "Worldwide Integrated Collaborative Environments 2005-2009 Forecast: Finding Opportunities in Cracks in the Ceiling of the ICE Market" April 2005



The Novell GroupWise Server Migration Utility quickly and easily transfers GroupWise agents, domains, post offices, and data from a NetWare or Windows server to a Linux server.

www.novell.com

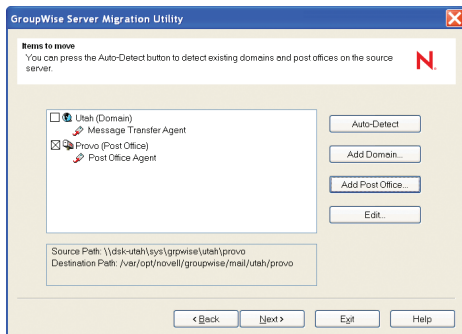


Figure 1. The GroupWise Server Migration Utility employs a wizard-like interface to guide you through the migration process quickly and easily.

After the initial transfer is complete, the GroupWise Server Migration Utility guides you through a process of testing the system running on the new Linux server. As a final step, the utility migrates any data that was altered since the initial transfer and activates the GroupWise services on the Linux server. This is the only point in the process when your post office agents will need to be taken down, minimizing disruptions to your knowledge workers during migration.

The Power of Firsthand Experience

The Novell Information Systems and Technology department has performed multiple GroupWise server migrations from NetWare to Linux. This experience fed the development of the GroupWise Server Migration Utility and gives us firsthand

knowledge in guiding our customers through the process. It also allows us to communicate the specific benefits that we have realized through migrating GroupWise to Linux:

- **Improved stability.** *Fewer system faults and reduced impact from other application faults*
- **Better application fault handling and recovery.** *Faster, more automated GroupWise agent restarts*
- **Lower impact.** *No database corruptions with agent crashes and minimal database corruption resulting from hardware or power failures*
- **Better process-management tools.** *Automated scripts for loading and unloading agents*

Flexibility to Meet Your Needs

Available as a free download, the GroupWise Server Migration Utility will accommodate customers running GroupWise 6.5 or later. It migrates the GroupWise system to servers running SUSE® Linux Enterprise Server 9 or Novell Open Enterprise Server with the latest support packs. For customers interested in experiencing the benefits of GroupWise on Linux, there's no easier way to make the transition. For more information, please visit: www.novell.com/groupwise



Contact your local Novell Solutions Provider, or call Novell at:

1 888 321 4272 U.S./Canada
1 801 861 4272 Worldwide
1 801 861 8473 Facsimile

Novell, Inc.
404 Wyman Street
Waltham, MA 02451 USA