

Though not always easy to define, these tools fulfill their promises of providing a simplified method of managing personal IDs, says Peter Stephenson.

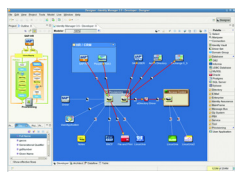
Identity management can be an administrator's nightmare. We looked at products that presented themselves as identity management products and we found that many of them, good as they were in their own context, did not fit our concept of what identity management is.

We likely are headed for a time when, in order to do away with static passwords, we will all want some form of identity management system. We saw some products that are headed in that direction. These products are more than identity management products. They build identity

management into an overall workflow management system.

The real benefit in these systems is that they even out the process of assigning, managing and auditing access. They are, in effect, full user management systems. Most important, perhaps, is that they are extensible.

Novell Identity Manager v3.5



Vendor	Novell
Price	Starting at \$25 per user and \$75,000 per server
Contact	www.novell.com

This is a lot more than a simple identity management product. Novell Identity Manager is a complete identity management system, a workflow system that simplifies both provisioning and binding users to objects, a compliance auditing system, single sign-on, a designer component that allows drag and drop development of policies and workflows, and a user interface that is both comprehensive and easy-to-use.

We liked just about everything about this product. This product shines from the initial deployment to the unique Designer module and the ability to build custom workflows for user self-provision-

ing. Deployment begins with the server and a basic set of modules. From that point on, virtually everything is set up using the Designer. However, there is a fairly complete set of modules that are pretty much ready to go with just a bit of modification for your particular environment. The user interface is intuitive and we found navigation easy.

We found that Novell Identity Manager can perform well for just about any size enterprise, although we can see it being most useful in larger deployments. We recommend this product especially for geographically distributed enterprises, particularly those with widely varying access control requirements. The ability to build multiple workflows quickly and simply lends itself well to a variety of changing requirements within the same enterprise.

Documentation, as with all Novell products, is superb. There are multiple manuals, each addressing a particular aspect or module. They are well organized and easy to use. Support, as well, is first rate. The support website has everything from product downloads to documentation, user

forums, application notes and white papers. We were able to find answers to just about any question we had on the product.

Priced starting at \$75,000 for the server and \$25 per user sounds pricey, but given the high quality and considerable functionality this could be a bargain for a large enterprise, which is where we think this product belongs. That said, it is easily deployable for smaller enterprises and is sufficiently extensible to support just about any level of growth.

SC MAGAZINE RATING	
Features	★★★★★
Ease of use	★★★★★
Performance	★★★★★
Documentation	★★★★★
Support	★★★★★
Value for money	★★★★★
OVERALL RATING	★★★★★
Strengths	First rate combination of full-blown identity management, administration and compliance auditing for user management.
Weaknesses	None.
Verdict	For large and growing mid-sized organizations this is our hands-down choice. For functionality, ease of use and overall support we rate this our Best Buy.



For functionality, ease of use and overall support we rate this our Best Buy.

Peter Stephenson

Novell®

Novell, Inc.
 404 Wyman Street
 Waltham, MA 02451
www.novell.com/identitymanager