

Novell Integration Manager™

6.0

June 27, 2006

T27 CONNECT USER'S GUIDE

www.novell.com



Novell®

Legal Notices

Novell, Inc. makes no representations or warranties with respect to the contents or use of this documentation, and specifically disclaims any express or implied warranties of merchantability or fitness for any particular purpose. Further, Novell, Inc. reserves the right to revise this publication and to make changes to its content, at any time, without obligation to notify any person or entity of such revisions or changes.

Further, Novell, Inc. makes no representations or warranties with respect to any software, and specifically disclaims any express or implied warranties of merchantability or fitness for any particular purpose. Further, Novell, Inc. reserves the right to make changes to any and all parts of Novell software, at any time, without any obligation to notify any person or entity of such changes.

Any products or technical information provided under this Agreement may be subject to U.S. export controls and the trade laws of other countries. You agree to comply with all export control regulations and to obtain any required licenses or classification to export, re-export or import deliverables. You agree not to export or re-export to entities on the current U.S. export exclusion lists or to any embargoed or terrorist countries as specified in the U.S. export laws. You agree to not use deliverables for prohibited nuclear, missile, or chemical biological weaponry end uses. Please refer to www.novell.com/info/exports/ for more information on exporting Novell software. Novell assumes no responsibility for your failure to obtain any necessary export approvals.

Copyright © 2006 Novell, Inc. All rights reserved. No part of this publication may be reproduced, photocopied, stored on a retrieval system, or transmitted without the express written consent of the publisher.

Novell, Inc. has intellectual property rights relating to technology embodied in the product that is described in this document. In particular, and without limitation, these intellectual property rights may include one or more of the U.S. patents listed at <http://www.novell.com/company/legal/patents/> and one or more additional patents or pending patent applications in the U.S. and in other countries.

Novell, Inc.
404 Wyman Street, Suite 500
Waltham, MA 02451
U.S.A.
www.novell.com

Online Documentation: To access the online documentation for this and other Novell products, and to get updates, see www.novell.com/documentation.

Novell Trademarks

For Novell trademarks, see the [Novell Trademark and Service Mark](#) list.

Third-Party Trademarks

All third-party trademarks are the property of their respective owners.

Contents

About This Book	9
1 Welcome to Integration Manager and T27 Connect	11
Before You Begin	11
About Integration Manager Connects	11
What is the T27 Connect?	12
About Integration Manager's T27 Component	13
What Applications Can You Build Using the T27 Connect?	13
2 Getting Started with the T27 Component Editor	15
Steps Commonly Used to Create a T27 Component	15
Creating XML Templates for Your Component	15
Creating a T27 Connection Resource	15
Connection Resources	16
Constant and Expression Driven Connections	17
3 Creating a T27 Component	19
Creating a T27 Component	19
About the T27 Component Editor Window	21
About the T27 Native Environment Pane	22
T27 Keyboard Support	22
About the Screen Object	23
What it is	23
How it works	24
T27-Specific Toolbar Buttons	24
Record Button 24	
Connection Button 25	
Set Screen Text Button 25	
Send Key Button 25	
Create Check Screen Button 25	
T27-Specific Menu Bar Items	25
T27-Specific Context-Menu Items	26
Native Environment Pane Context Menu	26
Action Pane Context Menu	26
4 Performing Basic T27 Actions	29
About Actions	29
About T27-Specific Actions	29
The Set Screen Text Action	30
The Send Key Action	31
The Check Screen Action	32
Understanding the Check Screen Action 33	
Using Actions in Record Mode	34
T27-Specific Expression Builder Extensions	34
Login	34
Screen Methods	34
Multi-row Screen Selections in the T27 Connect	39
Selecting Continuous Data	39
Selecting Rectangular Regions	39
5 T27 Components in Action	41
The Sample Transaction	41

Recording a T27 Session	41
Editing a Previously Recorded Action Model	45
Editing or Adding to an Existing Action	46
Deleting an Action	48
Looping Over Multiple Rows in Search of Data	49
Testing your T27 Component	50
Using the Animation Tools	52
Data Sets that Span Screens	53
Multiple Screens	53
Dealing with Redundant Data	53
Tips for Building Reliable T27 Components	56
Using Other Actions in the T27 Component Editor	56
Handling Errors and Messages	56
Check Screen Errors 56	
Set Screen Text Errors 57	
Finding a “Bad” Action	57
Performance Considerations	58
6 Logon Components, Connections, and Connection Pools	59
About T27 Terminal Session Performance	59
When Will I Need Logon Components?	59
Connection Pool Architecture	60
The Logon Connection’s Role in Pooling	62
How Many Pools Do I Need?	62
Pieces Required for Pooling	63
How Do I Implement Pooling?	63
The T27 Logon Component	63
Logon, Keep Alive, and Logoff Actions	64
LOGON Actions	64
Maximizing Performance with the Logon Component 65	
Keep Alive Actions	66
Maximizing Performance with Keep Alive Actions 67	
Logoff Actions	67
Logon Component Life Cycle	67
About the T27 Logon Connection	68
Many-to-One Mapping of Components to Logons 69	
Connection Pooling with a Single Sign-On	69
Creating a Connection Pool	69
Overview	69
Creating a Basic T27 Connection	70
Creating a Logon Component	70
Creating a Logon Connection using a Pool Connection	72
Maximizing Performance of T27 Logon Connection 75	
Static versus Dynamically Created Documents/Elements 76	
Creating a Logon Connection using a Session Connection	76
Creating a T27 Component That Uses Pooled Connections	78
Maximizing Performance of T27 Terminal Components 78	
Managing Pools	79
Using the Integration Manager Console	79
Connection Pool Management and Deployed Services	81
Connection Discard Behavior	81
Screen Synchronization	81
A Glossary	83
B T27 Display Attributes	85
Viewing All Character Attributes at Once 85	
C Reserved Words	87

About This Book

Purpose

The guide describes how to use Integration Manager T27 Connect, referred to as the T27 Component Editor. The T27 Component Editor is a separately-installed component editor in Integration Manager.

Audience

The audience for the guide is developers and system integrators using Integration Manager to create Web services and components which integrate T27 applications.

Prerequisites

The guide assumes the reader is familiar with and has used Integration Manager's development environment and deployment tools. You must also have an understanding of the T27 environment and building or using applications utilizing T27. Familiarity with other mainframe terminal emulators, such as UTS, 3270, 5250 or VT-series terminals (e.g. VT100) would also be helpful as you read through this guide.

Additional documentation

For the complete set of Novell Integration Manager documentation, see the Novell Documentation Web Site (<http://www.novell.com/documentation-index/index.jsp>).

Organization

The guide is organized as follows:

Chapter 1, *Welcome to Integration Manager and T27 User Interface*, gives a definition and overview of the T27 Connect and Component Editor and the types of applications you may build using them.

Chapter 2, *Getting Started with the T27 Component Editor*, describes the necessary preparations for creating a T27 component.

Chapter 3, *Creating a T27 Component*, describes the different parts of the component editor.

Chapter 4, *Performing T27 Actions*, describes how to use the basic T27 actions, as well as the unique features of the T27 Connect.

Chapter 5, *T27 Components in Action*, demonstrates using T27 components and actions using a sample application in the context of an Action Model.

Chapter 6, *Logon Components, Connections, and Connection Pools*, describes how to enhance performance through use of shared connections.

Appendix A, is a glossary.

Appendix B, *T27 Attributes*, and their display significance along with a discussion of how to use the `getAttribute()`.

Appendix C, *Reserved Words*, lists those words used only for T27 Connect.

Conventions Used in the Guide

The guide uses the following typographical conventions.

Bold typeface within instructions indicate action items, including:

- ◆ Menu selections
- ◆ Form selections
- ◆ Dialog box items

Sans-serif bold typeface is used for:

- ◆ Uniform Resource Identifiers
- ◆ File names
- ◆ Directories and partial pathnames

Italic typeface indicates:

- ◆ Variable information that you supply
- ◆ Technical terms used for the first time
- ◆ Title of other Novell publications

`Monospaced` typeface indicates:

- ◆ Method names
- ◆ Code examples
- ◆ System input
- ◆ Operating system objects

About the Product Name Change

In version 6.0, we've changed the name of exteNd Composer to Novell Integration Manager. In some places in the user interface, and in Integration Manager file and directory names, you will still see the name "exteNd Composer" or "Composer".

1

Welcome to Integration Manager and T27 Connect

Before You Begin

Welcome to the T27 Connect Guide. This Guide is a companion to the *Novell Integration Manager User's Guide*, which details how to use all the features of Integration Manager, except for the Connect Component Editors. If you haven't looked at the *Novell Integration Manager User's Guide* yet, please familiarize yourself with it before using this Guide.

Integration Manager provides separate Component Editors for each Connect. The special features of each component editor are described in separate Guides like this one.

If you have been using Integration Manager, and are familiar with the XML Map Component Editor, then this Guide should get you started with the T27 Component Editor.

Before you can begin working with the T27 Connect you must have installed it into your existing Integration Manager. Likewise, before you can run any Services built with this Connect in the Integration Manager Enterprise Server environment, you must have already installed the server-side software for this Connect into Integration Manager Enterprise Server.

NOTE: To be successful with this Component Editor, you must be familiar with the T27 environment and the particular applications that you want to XML-enable.

About Integration Manager Connects

Integration Manager is built upon a simple hub and spoke architecture (Fig. 1-1). The hub is a robust XML transformation engine that accepts requests via XML documents, performs transformation processes on those documents and interfaces with XML-enabled applications, and returns an XML response document. The spokes, or Connects, are plug-in modules that "XML-enable" sources of data that are not XML aware, bringing their data into the hub for processing as XML. These data sources can be anything from legacy COBOL/applications to Message Queues to HTML pages.

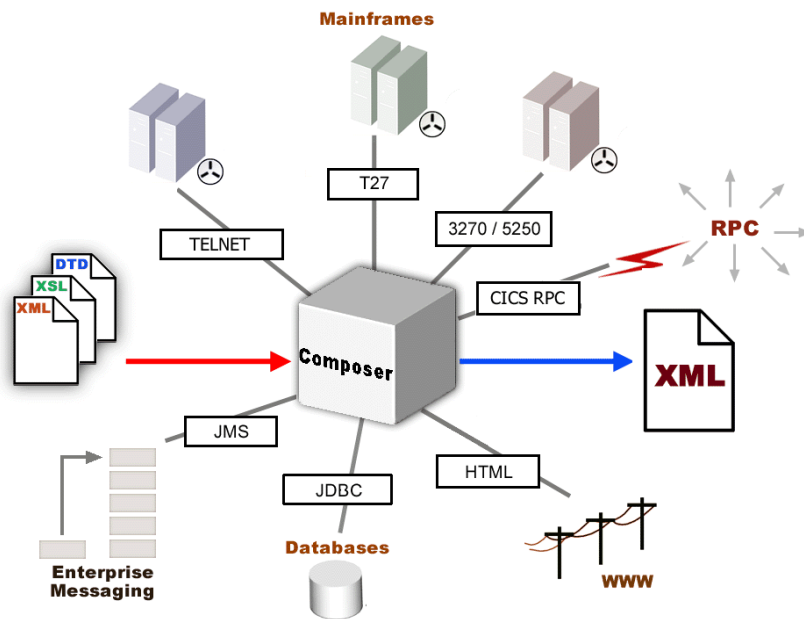
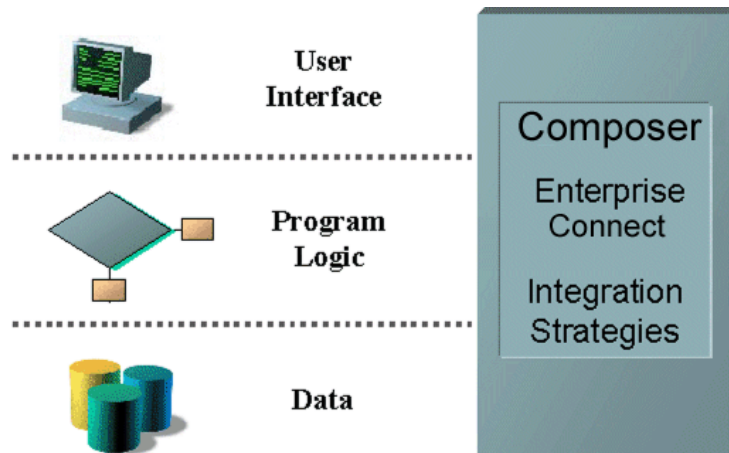


Figure 1-1

Integration Manager Connects can be categorized by the integration strategy each one employs to XML-enable an information source. The integration strategies are a reflection of the major divisions used in modern systems designs for Internet-based computing architectures. Depending on your B2B needs and the architecture of your legacy applications, Integration Manager can integrate your business systems at the User Interface, Program Logic, or Data levels. (See below.)



What is the T27 Connect?

The T27 Connect XML-enables Unisys host system data using the User Interface integration strategy by hooking into the terminal data stream.

T27 terminals are used to interact with the popular Unisys mainframe models, including the A Series, V Series, and ClearPath™ NX. Before personal computers became widely available in the mid-1980s, companies relied heavily on large mainframe systems like these to store and access vital information.

Using the T27 Connect, you can make legacy applications and their business logic available to the internet, extranet, or intranet as Web Services. The T27 Connect Component Editor allows you to build

Web Services by simply navigating through an application as if you were at a terminal session. You will use XML documents to drive inquiries and updates into the screens rather than keying, use the messages returned from application screens to make the same decisions as if you were at a terminal, and move data and responses into XML documents that can be returned to the requestor or continue to be processed. The T27 screens appear in the Native Environment Pane of the T27 Component Editor.

About Integration Manager's T27 Component

Much like the XML Map component, the T27 Component is designed to map, transform, and transfer data between two different XML templates (i.e., request and response XML documents). However, it is specialized to make a connection to a Unisys T27 host application, process the data using elements from a screen, and then map the results to an output DOM. You can then act upon the output DOM in any way that makes sense for your integration application. In essence, you're able to capture data from, or push data to, a host system without ever having to alter the host system itself.

A T27 Component can perform simple data manipulations, such as mapping and transferring data from an XML document into a host program, or perform "screen scraping" of a T27 transaction, putting the harvested data into an XML document. A T27 Component has all the functionality of the XML Map Component and can process XSL, send mail, and post and receive XML documents using the HTTP protocol.

What Applications Can You Build Using the T27 Connect?

Integration Manager, and consequently the T27 Connect, can be applied to the the following types of applications:

- 1** Business to Business Web Service interactions such as supply chain applications.
- 2** Consumer to Business interactions such as self-service applications from Web Browsers.
- 3** Enterprise Application Integrations where information from heterogeneous systems is combined or chained together.

Fundamentally, the T27 Component Editor allows you to extend any XML integration you are building to include any of your business applications that support T27-based terminal interactions (See the *Novell Integration Manager User's Guide* for more information.)

For example, you may have an application that retrieves a product's description, picture, price, and inventory from regularly updated databases and displays it in a Web browser. By using the T27 Component Editor, you can now get the current product information from the operational systems and the static information (e.g., a picture) from a database and merge the information from these separate information sources before displaying it to a user. This provides the same current information to both your internal and external users.

2 Getting Started with the T27 Component Editor

Steps Commonly Used to Create a T27 Component

While there are many ways to go about creating T27 Components, the most commonly used steps in creating a simple component are as follows:

- ◆ Create XML Template(s) for the program.
- ◆ Create a T27 Connection Resource.
- ◆ Create a T27 Component.
- ◆ Enter Record mode and navigate through the program using terminal emulation available via the component editor's Native Environment Pane.
- ◆ Drag and drop input-document data into the screen as needed.
- ◆ Drag and drop screen results into the output document.
- ◆ Stop recording.

This chapter will cover the first two steps in this process.

Creating XML Templates for Your Component

Although it is not strictly necessary to do so, your T27 Component may require you to create XML templates so that you have sample documents for designing your component. (For more information, see Chapter 5, "Creating XML Templates," in the *Novell Integration Manager User's Guide*.)

In many cases, your input documents will be designed to contain data that a terminal operator might type into the program interactively. Likewise, the output documents are designed to receive data returned to the screen as a result of the operator's input. For example, in a typical business scenario, a terminal operator may receive a phone request from a customer interested in the price or availability of an item. The operator would typically query the host system via his or her T27 terminal session by entering information (such as a part number) into a terminal when prompted. A short time later, the host responds by returning data to the terminal screen, and the operator relays this information to the customer. This session could be carried out by an Integration Manager Web Service that uses a T27 Component. The requested part number might be represented as a data element in an XML input document. The looked-up data returned from the host would appear in the component's *output* document. That data might in turn be output to a web page, or sent to another business process as XML, etc.

NOTE: Your component design may call for other xObject resources, such as custom scripts or Code Table maps. If so, it is also best to create these objects before creating the T27 Component. For more information, see the *Novell Integration Manager User's Guide*.

Creating a T27 Connection Resource

Once you have the XML templates in place, your next step will be to create a Connection Resource to access the host program. If you try to create a T27 Component in the absence of any available Connection Resources, a dialog will appear, asking if you wish to create a Connection Resource. By answering Yes to this dialog, you will be taken to the appropriate wizard.

Connection Resources

When you create a Connection Resource for the T27 Component, you will have what appear to be three choices: a straight Connection, a Logon Connection and a MultiBridge Connection. Generally speaking, you will use the straight T27 Connection to connect to your host environment. The Logon Connection is used for connection pooling, which will be explained in greater detail in Chapter 6 of this Guide. The MultiBridge Connection is a gateway server version that minimizes the number of connections going back to the host and also contains added security. A MultiBridge connection would need to be specially enabled with the help of Novell and a third party business partner. If you think that your application needs to use a MultiBridge connection, please contact Novell Technical Support.

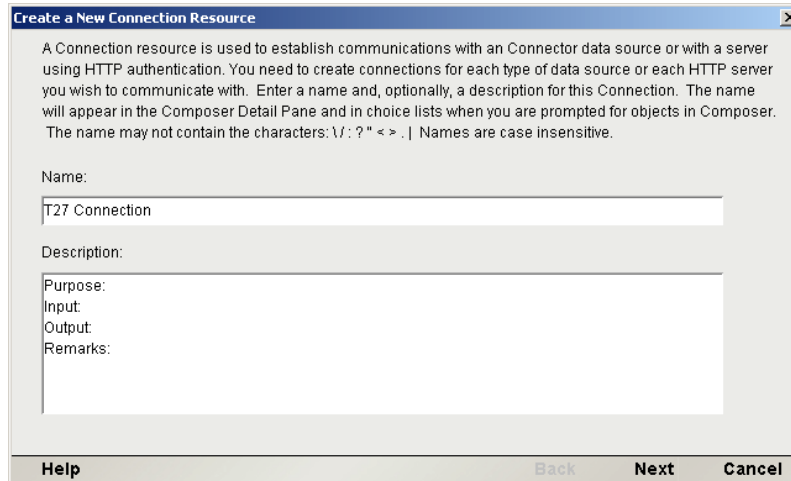
After setting up your T27 Connection Resource, it will be available for use by any number of T27 Components that might require a host connection.

➤ To create a T27 Connection Resource:

- 1 From the Integration Manager **File** menu, select **New>xObject**, then open the **Resource** tab and select **Connection**.

NOTE: Alternatively, under **Resource** in the Integration Manager window category pane you can highlight **Connection**, click the right mouse button, then select **New**.

The **Create a New Connection Resource Wizard** appears.



Create a New Connection Resource

A Connection resource is used to establish communications with an Connector data source or with a server using HTTP authentication. You need to create connections for each type of data source or each HTTP server you wish to communicate with. Enter a name and, optionally, a description for this Connection. The name will appear in the Composer Detail Pane and in choice lists when you are prompted for objects in Composer. The name may not contain the characters: \ / : ? " < > . | Names are case insensitive.

Name:
T27 Connection

Description:
Purpose:
Input:
Output:
Remarks:

Help Back Next Cancel

- 2 Type a **Name** for the connection object.
- 3 Optionally, type **Description** text.
- 4 Click **Next**. The second panel of the wizard appears.

- 5 Select the **T27 Connection** type from the pull-down menu. The dialog changes appearance to show just the fields necessary for creating the T27 connection.
- 6 In the **Host or IP Address** field, enter the physical (IP) address or hostname alias for the machine to which you are connecting.
- 7 In the **T27 Port** field, enter the number of the T27 port. The default port number is 23.
- 8 In the **Host Connection ID** field, enter an identifier string used to manage your terminal connection to the host.
- 9 In the **Screen Wait (seconds)** field, enter the amount of time in seconds that a T27 Terminal component will wait for the arrival of the next screen in the Check Screen Action pane (this sets the default value).
- 10 In the **Screen Rows** field, specify the default number of rows per screen.
- 11 In the **Screen Columns** field, specify the default number of columns per screen.
- 12 Enter a **UserID** and **Password**. These are not actually submitted to the host during the establishment of a connection. They are simply defined here (the password is encrypted.) Right-mouse-click and choose **Expression** if you want to make these fields expression-driven.

NOTE: After you've entered UserID and Password info in this dialog, the ECMAScript global variables USERID and PASSWORD will point to these values. You can then use these variables in Set Screen Text expressions (or as described in ["Native Environment Pane Context Menu"](#) on page 26.
- 13 Click the **Default** check box if you'd like this particular T27 connection to become the default connection for subsequent T27 Components.
- 14 Click **Finish**. The newly created resource connection object appears in the Integration Manager Connection Resource detail pane.

Constant and Expression Driven Connections

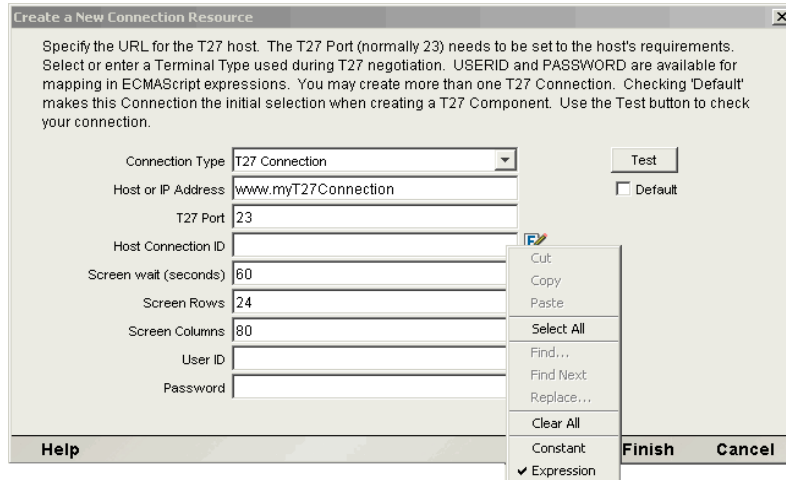
You can specify Connection parameter values in one of two ways: as Constants or as Expressions. A *constant-based* parameter uses the static value you supply in the Connection dialog every time the Connection is used. An *expression-based* parameter allows you to set the value in question using a programmatic expression (that is, an ECMAScript expression), which can result in a *different* value each time the connection is used at runtime. This allows the Connection's behavior to be flexible and vary based on runtime conditions.

For instance, one very simple use of an expression-driven parameter in a T27 Connection would be to define the User ID and Password as PROJECT Variables (e.g.: PROJECT.XPath("USERCONFIG/MyDeployUser"). This way, when you deploy the project, you can update the PROJECT Variables in the Deployment Wizard to values appropriate for the final

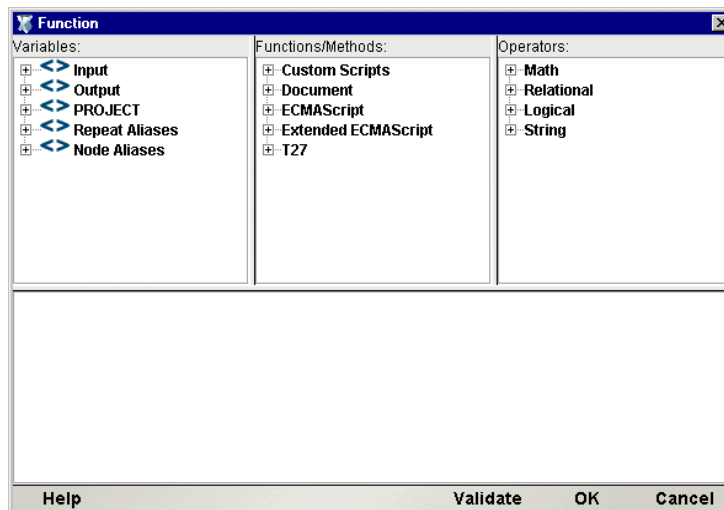
deployment environment. At the other extreme, you could have a custom script that queries a Java business object in the Application Server to determine what User ID and Password to use.

➤ **To switch a parameter from Constant-driven to Expression-driven:**

- 1 Click the right mouse button in the parameter field you are interested in changing.
- 2 Select **Expression** from the context menu and the editor button will appear or become enabled. See below.



- 3 Click on the **Expression Editor** button. The Expression Editor appears.



- 4 Create an expression (optionally using the pick lists in the upper portion of the window) that evaluates to a valid parameter value at runtime. Click **OK**.

3 Creating a T27 Component

Creating a T27 Component

As discussed in the previous chapter, before you proceed with creating a T27 component you must first prepare any XML templates needed by the component. (For more information, see “Creating a New XML Template” in the *Novell Integration Manager User's Guide*.) During the creation of your component, you will use these template's sample documents to represent the inputs and outputs processed by your component.

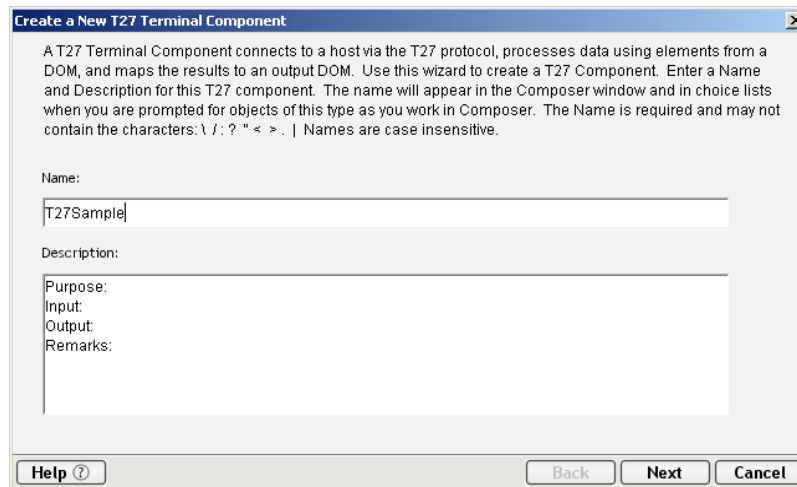
Also, as part of the process of creating a T27 component, you must specify a T27 connection for use with the component (or you can create a new one). See the previous chapter for information on creating T27 Connection Resources.

➤ **To create a new T27 Component:**

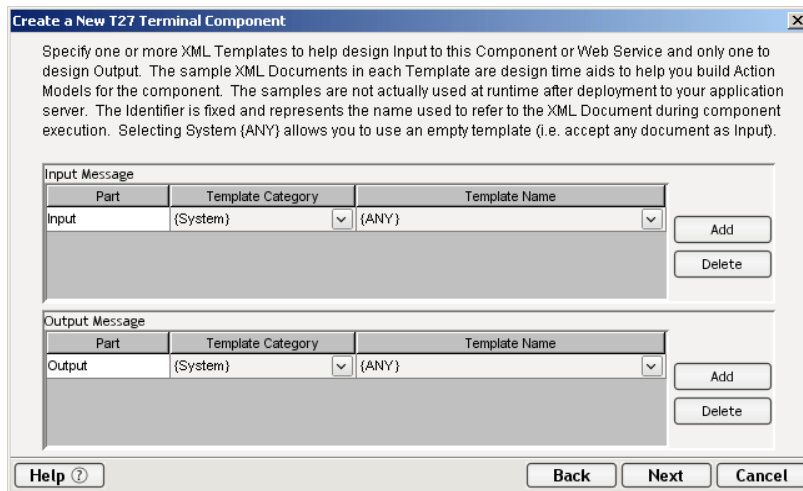
- 1 Select **File>New>xObject** then open the **Component** tab and select **T27 Terminal**.

NOTE: Alternatively, under **Component** in the Integration Manager window category pane you can highlight **T27 Terminal**, click the right mouse button, then select **New**.

- 2 The “Create a New T27 Component” Wizard appears.

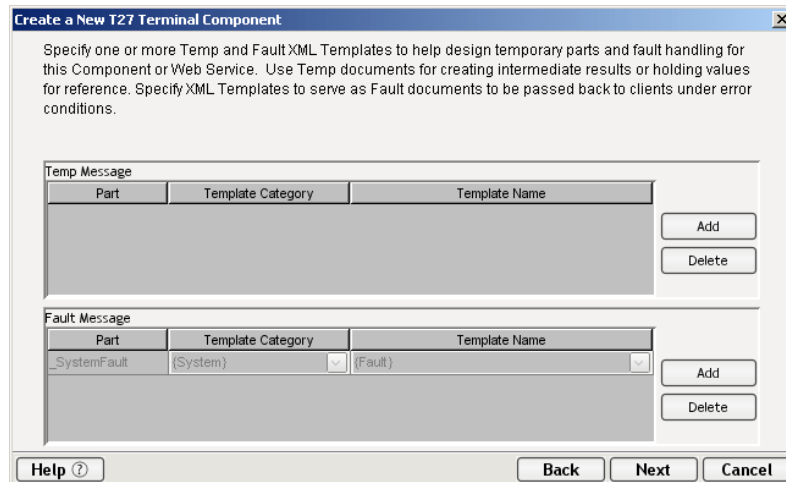


- 3 Enter a **Name** for the new T27 Terminal Component.
- 4 Optionally, type **Description** text.
- 5 Click **Next**. The XML Input/Output Property Info panel of the New T27 Component Wizard appears.



- 6 Specify the Input and Output templates as follows.
 - ◆ Type in a name for the template under **Part** if you wish the name to appear in the DOM as something other than “Input”.
 - ◆ Select a **Template Category** if it is different than the default category.
 - ◆ Select a **Template Name** from the list of XML templates in the selected **Template Category**.
 - ◆ To add additional input XML templates, click **Add** and choose a **Template Category** and **Template Name** for each.
 - ◆ To remove an input XML template, select an entry and click **Delete**.
- 7 Select an XML template for use as an Output DOM using the same steps outlined above.

NOTE: You can specify an input or output XML template that contains no structure by selecting {System}{ANY} as the Input or Output template. For more information, see “Creating an Output DOM without Using a Template” in the User’s Guide.
- 8 Click **Next**. The XML Temp/Fault Template Info panel of the New T27 Component Wizard appears.



- 9 If desired, specify a template to be used as a scratchpad under the “Temp Message” pane of the dialog window. This can be useful if you need a place to hold values that will only be used temporarily during the execution of your component or are for reference only. Specify the templates as indicated in Step 6 above.
- 10 Under the “Fault Message” pane, select an XML template to be used to pass back to clients when an error condition occurs.

As above, to add additional temp or fault XML templates, click **Add** and choose a Template Category and Template Name for each. Repeat as many times as desired. To *remove* an XML template, select an entry and click **Delete**.

- 11** Click **Next**. The Connection Info panel of the Create a New T27 Component Wizard appears.

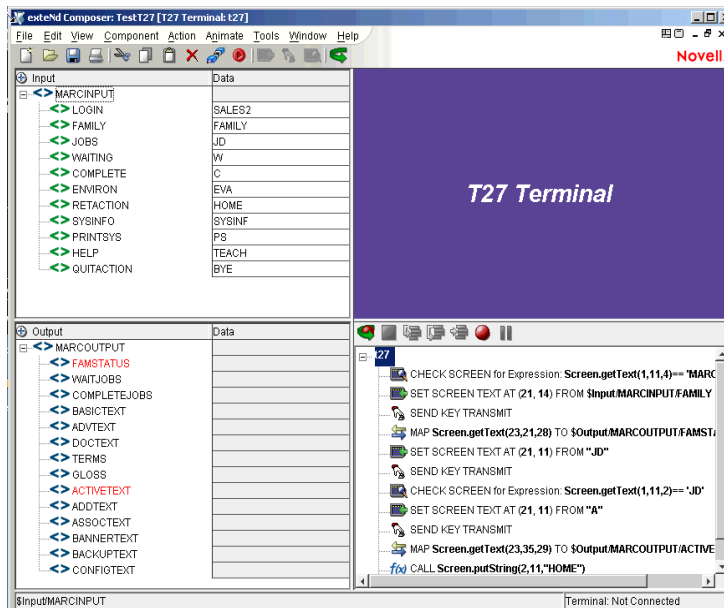
The screenshot shows a dialog box titled "Create a New T27 Terminal Component". The main text reads: "Specify which Connection you wish to use for this Component or Service. To change any connection parameters, you must change them in the Connection Resource object or create a new Connection Resource of the same type with different parameters." Below this text are several fields: a "Connection" dropdown menu with "sampleT27Connect" selected, a "Test" button, "Host or IP Address" (www.t27sample.com), "T27 Port" (23), "Host Connection ID", "Screen wait (seconds)" (60), "Screen Rows" (24), "Screen Columns" (80), "User ID", and "Password". At the bottom are "Help", "Back", "Finish", and "Cancel" buttons.

- 12** Select a **Connection** name from the pulldown list. For more information on the T27 Connection, see [“Creating a T27 Connection Resource” on page 15](#) in Chapter 2.
- 13** Click **Finish**. The component is created and the T27 Component Editor appears.

About the T27 Component Editor Window

The T27 Component Editor includes all the functionality of Integration Manager’s XML Map Component Editor. For example, it contains mapping panes for Input and Output XML documents as well as an Action pane.

There is one main difference, however. The T27 Component Editor also includes a Native Environment Pane featuring a T27 emulator. This screen appears blue until you either click the Connection icon in the main toolbar or begin recording by clicking the Record button in the toolbar. Either action establishes a T27 emulation session inside the Native Environment Pane with the host that you specified in the connection resource used by this T27 component.



About the T27 Native Environment Pane

The T27 Native Environment Pane provides T27 emulation of your host environment. From this pane, you can execute a T27 session in real time, interacting with the Native Environment Pane exactly as you would with the screen on a terminal connected to a Unisys mainframe. You can also do the following:

- Use data from an Input XML document (or other available DOM) as input for a T27 screen field. For example, you could drag a SKU number from an input DOM into the “part number” field of a T27 screen, which would then query the host and return data associated with that part number, such as description and price.
- Map the data from the returned T27 screen and put it into an Output XML document (or other available DOM, e.g., Temp, MyDom, etc.).
- Map header and detail information (such as a form with multiple line items) from the Native Environment Pane to an XML document using an ECMAScript expression or function.

T27 Keyboard Support

The T27 Native Environment Pane supports the use of several special attention keys including: Clear Home, Local, Previous Page, Specify, Forms Mode Toggle, Next Page, Receive and Transmit. The function for each attention key may vary depending on the host application. These keys are mapped to the PC Keyboard as follows:

Table 1-1:

T27 Keys	PC Key
Clear Home	Ctrl+Home
Local	F10 or F6
Previous Page	PageUp

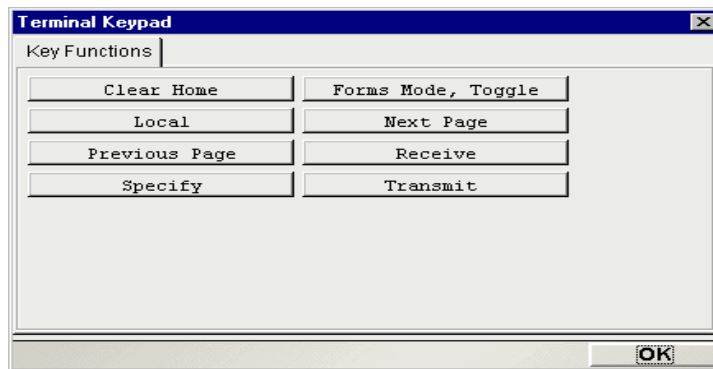
Table 1-1:

T27 Keys	PC Key
Specify	F9 or F5
Forms Mode, Toggle	Esc, Alt+S or O
Next Page	PageDown
Receive	F11 or F7
Transmit	F12 or F8

You can either use the keys directly from the keyboard as you create your T27 Component, or you can use a keypad tool bar available from the view menu.

➤ **How to Use the Floating Keypad:**

- 1** Select **View/Terminal Keypad** from the Integration Manager Menu. A floating Keypad appears.
- 2** Click on the key you wish to invoke. If you require help, hover the mouse over that key. Help will display the T27 keyboard equivalent for that key. You will see the result of the key you clicked in the Native Environment Pane.
- 3** Click **OK** to close the keypad. In order for the keypad to redisplay, you must repeat step 1.



About the Screen Object

The Screen Object is a byte-array representation of the emulator screen shown in the Native Environment Pane, with methods for manipulating the screen contents.

What it is

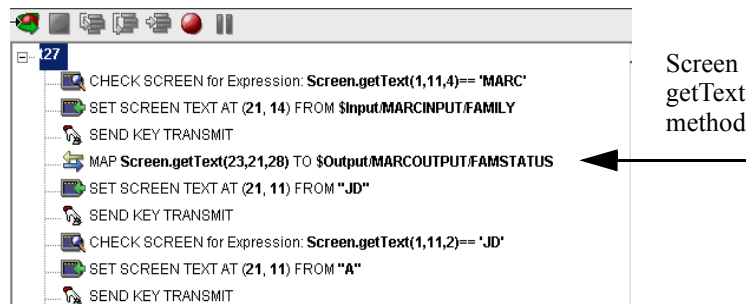
The T27 component communicates with the host environment via the block mode terminal data stream , in a T27 *session*. A block of data essentially represents a screen. The host sends a screen block that is displayed in the component. The screen is edited by the user (and ultimately by the component you create) and the modified screen block is sent back to the host for processing after you press an attention key. The Screen Object represents the current screen's block of data. For a 24 x 80 terminal screen, this is 1,920 bytes of data.

How it works

When character data arrives from the host, appropriate updates to the Native Environment Pane occur in real time. Those updates might be anything from a simple cursor repositioning to a complete repaint of the terminal screen. The screen content is, in this sense, highly dynamic.

When you have signaled Integration Manager (via a Set Screen Text action) that you wish to operate on the current screen's contents, the screen buffer is packaged into a *Screen Object* that is made accessible to your component through ECMAScript.

Many times, it is not necessary for your component to “know” or understand the complete screen contents prior to sending keystrokes back to the host or prior to mapping data into a prompt. But when mapping outbound from the screen to a DOM, it can be useful to have programmatic access to the Screen Object. To make this possible, the Connect for T27 defines a number of ECMAScript extensions for manipulating screen contents. These extensions are described in further detail in the next chapter. For now, a simple example will suffice. Suppose you are interested in obtaining a string value that occurs on the screen in row 23 at column position 21. If the string is 28 characters long, you could obtain its value by using an ECMAScript expression as the Source in a Map action (with an output DOM or temp DOM as the Target):



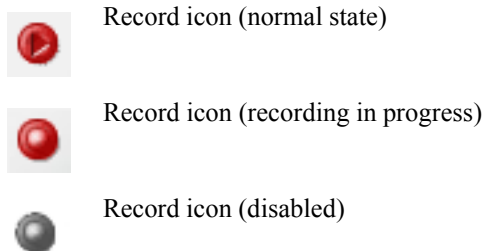
In the example shown above, the 28 characters beginning at row 23, column 21 on the screen would be mapped to the Output DOM, with the XPATH `/MARCOUTPUT/FAMSTATUS`.

Map actions and screen methods will be discussed in greater detail in the section on “T27-Specific Expression Builder Extensions” in the Chapter 4.

T27-Specific Toolbar Buttons

If you are familiar with Integration Manager, you will notice immediately that the T27 Connect includes a number of Connect-specific tool icons on the component editor's main toolbar. They appear as shown below.

Record Button



The Record button allows you to capture keyboard and screen manipulations as you interact with the Native Environment Pane. Recorded operations are placed in the Action Model as actions, which you can then “play back” during testing.

Connection Button



Connection (disconnected state)



Connection (connected state)



Connection (connected/disabled state)

The Connection button on Integration Manager’s main toolbar toggles the connection state of the component (using settings you provided during the creation of the Connection Resource associated with the component).

NOTE: When you are recording or animating, a connection is automatically established, in which case the button will be shown in the “connected/disabled” state. When you turn off recording, the connection the button will return to the enabled state.

Set Screen Text Button



The Set Screen Text button on Integration Manager’s main toolbar is used to indicate that you wish to send data to the screen object. Clicking this button will bring up the Set Screen Text dialog, allowing you to create a new Set Screen Text Action.. (See the next chapter for a detailed discussion of this action type.)

Send Key Button



The Send Key button on Integration Manager’s main toolbar would be pressed when you wish to add a Send Key Action to the Action Model. (See the next chapter for a detailed discussion of this action type.) The various T27 attention keys are discussed in [“T27 Keyboard Support” on page 22](#).

Create Check Screen Button



The Create Check Screen button on Integration Manager’s main toolbar is used to check that the terminal screen is in the state you expect it to be. Clicking this button will bring up the Check Screen dialog, allowing you to create a new Check Screen Action. (The next chapter contains a detailed discussion of this action type.)

T27-Specific Menu Bar Items

Component Menu

Two additional items have been added to the Component drop down menu for the T27 Connect. These are Start/Stop Recording and Connect/Disconnect (depending on your current status).

Start/Stop Recording—This menu option manages the automatic creation of actions as you interact with a host program. **Start** will enable the automatic creation of actions as you interact with the screen and **Stop** will end action creation.

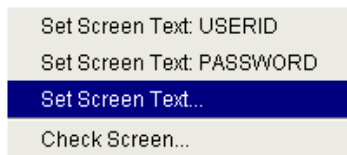
Connect/Disconnect—This menu option allows you to control the connection to the host. When you are recording or animating, a connection is automatically established (and consequently, the connection icon is shown in the “connected/disabled” state). However, this menu choice is useful if you are *not* recording and you merely want to establish a connection for the purpose of navigating the T27 environment.

T27-Specific Context-Menu Items

The T27 Connect also includes context-menu items that are specific to this Connect. To view the context menu, place your cursor in either the Native Environment pane or the Action pane and click the right mouse button.

Native Environment Pane Context Menu

When you right-mouse-click in the Native Environment Pane, you will see a contextual menu. The menu items will be greyed out if you are not in record mode. In record mode, the context menu has the following appearance:



The four commands work as follows:

Set Screen Text: USERID—Automatically sends User ID information to the host, based on the value you supplied (if any) for User ID in the T27 Connection Resource for this component. Also creates the corresponding Set Screen Text action in the Action Model.

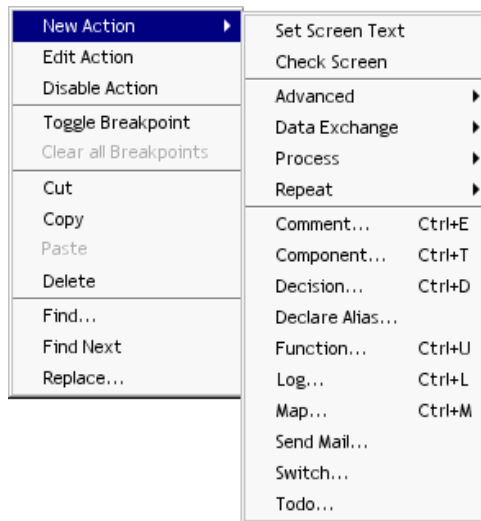
Set Screen Text: PASSWORD—Automatically transmits Password information to the host, based on the Password you supplied (if any) in the T27 Connection Resource for this component. Also creates the corresponding Set Screen Text action in the Action Model.

Set Screen Text...—Creates a new Set Screen Text dialog, allowing you to create a new Set Screen Text Action. (See the next chapter for a detailed discussion of the use of this command).

Check Screen...—Brings up the Check Screen dialog, allowing you to create a new Check Screen Action. (This will be discussed in greater detail in the next chapter.)

Action Pane Context Menu

If you click the right mouse button when the mouse is located anywhere in the Action pane, a context menu appears as shown.



The T27-specific functions of the context menu items are as follows:

Set Screen Text—Allows you to create a Set Screen Text action to send data to the host. A dialog appears, allowing you to specify what you want to send to the host as well as determining the screen position where the informatin will be received. (See the next chapter for a detailed discussion of the use of this command.)

Check Screen— Allows you to create a new Check Screen action which is used to make sure the appropriate screen is present before the component continues processing. A dialog appears, allowing you to specify various go-ahead criteria as well as a Timeout value. (The next chapter contains a detailed discussion of the Check Screen action.)

4 Performing Basic T27 Actions

About Actions

An *action* is similar to a programming statement in that it takes input in the form of parameters and performs specific tasks. Please see the chapters in the *Novell Integration Manager User's Guide* devoted to Actions.

Within the T27 Component Editor, a set of instructions for processing XML documents or communicating with non-XML data sources is created as part of an Action Model. The Action Model performs all data mapping, data transformation, data transfer between hosts and XML documents, and data transfer within components and services.

An Action Model is made up of a list of actions that work together. As an example, you might design an Action Model that would read some invoice data from a file and then transform the data in some way before placing it in an output XML document.

The Action Model mentioned above would be composed of several actions. These actions would:

- ◆ Use an XML document containing a sku number as input to perform a T27 transaction which retrieves the invoice data for that sku from an inventory database that resides on your Unisys host
- ◆ Map the result to a temporary XML document
- ◆ Convert a numeric code using a Code Table
- ◆ Map the result to an Output XML document

About T27-Specific Actions

As mentioned in the previous chapter, the T27 Connect includes three actions that are specific to the T27 environment: Set Screen Text, Send Key and Check Screen.

T27 Action	Description
Set Screen Text	Allows the user to specify what data is transmitted to the host and at what screen position it will be received. The string is formed from Map actions, user keystrokes or it may come from an ECMAScript Expression. The Set Screen Text action can be created manually, but will more often be generated automatically when the user types into the screen or maps data to the current prompt.
Send Key	Sends a T27-specific attention key to the host system. The Send Key action can be created manually by clicking an icon, or automatically when the user presses one of the mapped keys or selects it from the T27 keypad.
Check Screen	Allows the component to stay in sync with the host application. This action signals the component that execution must not proceed until the screen is in a particular state (which can be specified in the Check Screen setup dialog), subject to a user-specified timeout value.

The purpose of these actions is to allow the T27 component (running in a deployed service) to replicate, at runtime, the terminal/host interactions that occur in a T27 session. The usage and meanings of these actions are described in further detail below.

The Set Screen Text Action

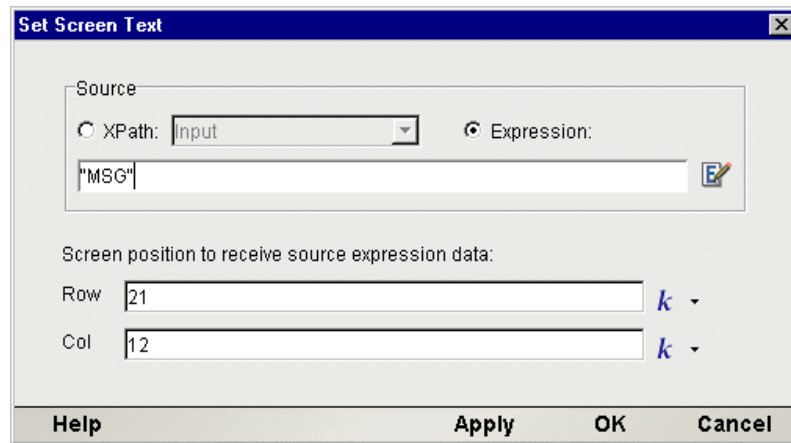
The Set Screen Text action encapsulates “keystroke data” (whether actually obtained from keystrokes, or through a drag-and-drop mapping, or via an ECMAScript expression built with the Expression Builder) that will be sent to the host in a single transmission at component execution time. When the Set Screen Text action executes, the data will appear on the host system screen. The data will not, however, be sent to the host until an attention key of some sort is sent using the Send Key Action..

The Set Screen Text action can be created in several ways:

- ◆ In Record mode, just begin typing on the Native Environment Pane. Keystrokes are automatically captured to a new Set Screen Text action.
- ◆ Right-mouse-click anywhere in the Action Model; a contextual menu appears. Select **New Action** and **Set Screen Text**.
- ◆ In the main menu bar, under **Action**, select **New Action** and **Set Screen Text**.
- ◆ While you are in Record mode, with your cursor in the Native Environment Pane, right-click then select **Set Screen Text**.

➤ **To create a Set Screen Text action using menu commands:**

- 1 Right-mouse-click anywhere in the Action Model and select **New Action**, then **Set Screen Text**, from the contextual menu (or use the Action menu as described above). The Set Screen Text dialog will appear.



- 2 To map a DOM element's contents to the buffer, click the **XPath** radio button, then select a DOM from the pulldown list and type the appropriate XPath node name in the text area (or click the Expression icon at right and build the node name using the Expression Builder).
- 3 To specify the buffer's contents using ECMAScript, click the **Expression** radio button, as shown on the screen above, then use the Expression Builder dialog to create an ECMAScript expression that evaluates to a string.
- 4 To specify the Row at which to receive data, type a value in the field. By default, the number you type will be a constant. The down arrow next to the **k** (constant) allows you to toggle back and forth between entering a constant and an ECMAScript expression.
- 5 To specify the Column at which to receive data, type a value in the field. By default, the number you type will be a constant. The down arrow next to the **k** (constant) allows you to toggle back and forth between entering a constant and an ECMAScript expression
- 6 Click **OK**.

NOTE: When a Set Screen Text action is created automatically for you while recording your session, all of your subsequent keystrokes will be captured to the buffer until you press an attention key or select one from the Send Key dialog.

The Send Key Action

The Send Key action does simply that - it sends an attention key to the host. This action will generally follow a Set Screen Text action so that the information you wish to transmit to the host gets there. When the Send Key action executes, the data you specified in the Set Screen Text action are actually transmitted to the host. Some Send Key actions, of course, stand alone and can be pressed at any time to receive specific information, clear the screen or navigate to different areas.

The Send Key action can be created in several ways:

- ◆ In Record mode, press one of the PC keys designated as an attention key (see the previous chapter for a discussion of these keys) to have the attention key executed at the current cursor position.
- ◆ From the drop down menu, select **View, Terminal Keypad**, click on an attention key and click **OK** to have the attention key executed at the current cursor position.
- ◆ Click on the Send Key icon in the main toolbar to bring up the Send Key dialog box.

➤ **To create a Send Key action using the main toolbar icon:**

- 1 With focus on the action after which you would like your Send Key action to appear, click on the Send Key icon in the main toolbar. The Send Key dialog will appear.



- 2 From the Key Value drop down, select the attention key you would like to send to the host. Remember that the function for each attention key may vary depending on the host application.
- 3 If you wish the key to execute at a position other than the current row/column location, check the Override Cursor Position box. This will enable the Row and Column position fields.
- 4 To specify the Row at which to transmit the key, type a value in the field. By default, the number you type will be a constant. Alternatively, you can click on the Expression builder to enter the row in the form of an ECMAScript expression.
- 5 To specify the Column at which to transmit the key, type a value in the field. By default, the number you type will be a constant. Alternatively, you can click on the Expression builder to enter the column in the form of an ECMAScript expression.
- 6 Click **OK**.

The Check Screen Action

Because of the latency involved in T27 sessions and the possibility that screen data may arrive in an arbitrary, host-application-defined order, it is essential that your component can depend on the terminal screen being in a given state before it operates on the current screen data. The Check Screen action makes it possible for your component to stay “in sync” with the host. You will manually create Check Screen actions at various points in your Action Model so that precisely the correct screens are acted on at precisely the right time(s).

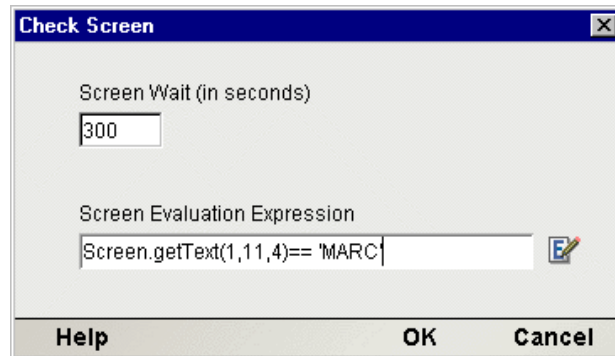
To create a new Check Screen action, you can do one of the following:

- ◆ Click on the “Create Check Screen Action” button on the main toolbar, or
- ◆ Perform a right mouse click inside the action list, then select **New Action** and **Check Screen** from the contextual menu, or
- ◆ In the component editor’s main menu bar, select **Action**, then **New Action**, then **Check Screen**
- ◆ While you are in Record mode, with your cursor in the Native Environment Pane, right-click then select **Check Screen**.

NOTE: You will most often use the toolbar button when you are in Record mode.

➤ **To create a Check Screen action using a menu command:**

- 1 With your cursor positioned in the Action Model on the action item after which you want your new item to appear, perform a right mouse click. Then select **New Action** and **Check Screen** from the contextual menu (or use the Action menu in the main menu bar as described above). The Check Screen dialog appears.



- 2 Specify a **Screen Wait** value in seconds. (See discussion below.)
- 3 Specify a **Screen Evaluation Expression** by typing one in directly or clicking on the Expression Builder icon to create one. (See discussion below.)
- 4 Click **OK**.

Understanding the Check Screen Action

It is important that the execution of actions in your Action Model not proceed until the host application is ready, and all screen data have arrived (that is, the screen is in a known state).

Your component must have some way of “knowing” when the current screen is ready. The Check Screen Action is how you specify the readiness criteria.

The purpose of the Check Screen Action dialog is twofold:

- ◆ It allows you to specify a wait time for program synchronization.
- ◆ It allows you to specify an expression which will be used as a criterion to judge whether the screen is in a state of readiness at execution time.

Screen Wait

The Screen Wait value (in seconds) represents the maximum amount of time that your component will wait for screen data to arrive and meet the readiness criterion specified in the expression. If the available screen data do not meet the readiness criteria before the specified number of seconds have elapsed, an exception is thrown.

NOTE: Obviously, since the latency involved in a T27 session can vary greatly from application to application, from connection to connection, or even from screen to screen, a great deal of discretion should be exercised in deciding on a Screen Wait value. Careful testing of the component at design time as well as on the server will be required in order to determine “safe” Screen Wait values.

The default Screen Wait value is determined by what you entered when setting up your T27 Connection Resource.

Expression

To determine your “go-ahead” criterion, click the Expression radio button in the Check Screen Action dialog and enter an ECMAScript expression in the associated text field. The expression checks for the existence of some specific data at a location in the Screen Object buffer. At runtime, if the expression evaluates as “true,” the screen is considered ready; but not otherwise. An example of such an expression would be: `Screen.getText(1,11,4) == "MARC"`.

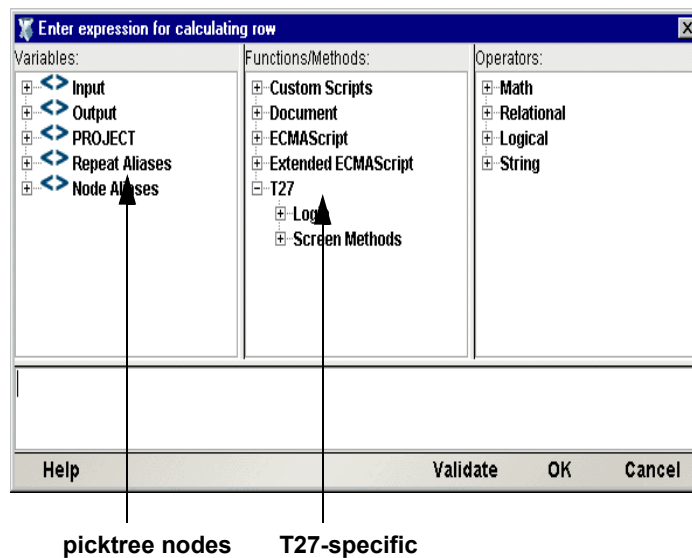
Using Actions in Record Mode

The easiest way to create an Action Model for your component is to use Record mode. When you build an Action Model in this way, a new Set Screen Text action is created for you automatically as soon as you begin typing or drag an element from the Input DOM into the appropriate field onscreen. All you need then do is send the appropriate attention key, wait for the next screen to arrive from the host, add a Check Screen action to make sure you are on the right screen and begin the process again, repeatedly. In this fashion, a sequence of Set Screen Texts, Send Keys and Check Screens actions can be built very quickly and naturally.

Working in record mode will be discussed further in Chapter 5, in the section entitled “Recording a T27 Session.”

T27-Specific Expression Builder Extensions

The Connect for T27 exposes several T27-specific ECMAScript variables and object extensions, which are visible in Expression Builder picklists. The T27-specific items are listed under the node labelled “T27.” There are two child nodes: Login and Screen Methods. See illustration below.



Login

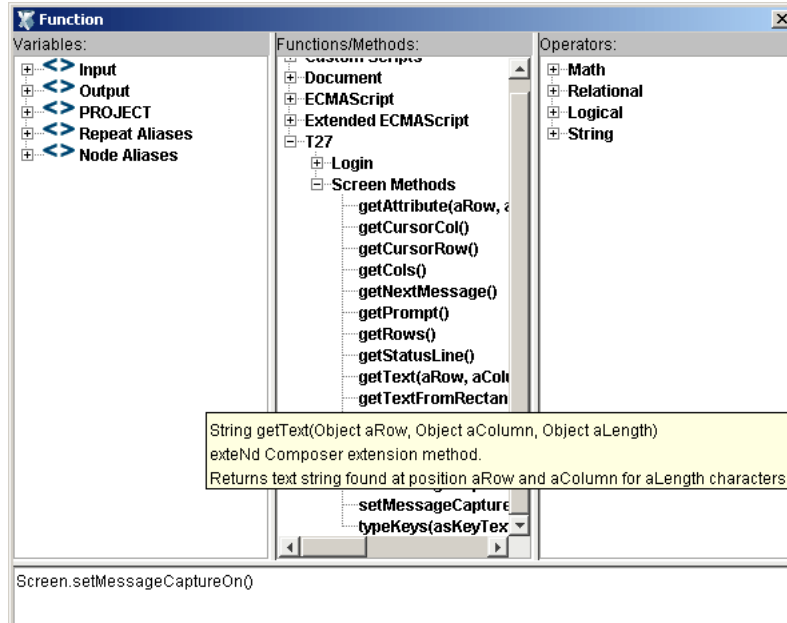
T27 Connection Resources have two global variables that are accessible from Expression Builder dialogs: USERID and PASSWORD. These properties (available under the Login node of the T27 picktree) specify the User ID and Password values that may be requested by the host system when you connect. You can map these variables into the terminal screen, which eliminates the need for typing user and password information explicitly in a map action.

NOTE: You can also create a Set Screen Text action where the XPath source is defined as \$PASSWORD.

Screen Methods

When an Expression Builder window is accessed from a Map or Function action in the T27 Component, the picklists at the top of the window expose special T27-specific ECMAScript extensions, consisting of various methods of the Screen object.

Hover-help is available if you let the mouse loiter over a given picktree item. (See illustration.)



In addition, you can obtain more complete online help by clicking Help in the lower left corner of the dialog.

The Screen object offers methods with the following names, signatures, and usage conventions:

`getAttribute(nRow, nColumn)`

Returns datatype: int

This method returns the *display attribute* value of the character at the screen position given by aRow, aColumn. The complete set of possible display attribute values is listed in [Chapter , ""](#). An example of using this method is:

```
if (Screen.getAttribute( 5, 20 ) == 34) // if character at row 5, col 20 is
protected and bold
... // do something
```

`getCursorCol(void)`

Returns datatype: int

This method returns the current column position of the cursor in the T27 emulator screen (Native Environment Pane). Column positions are one-based rather than zero-based. In other words, in 24x80 mode, this method would return a value from 1 to 80, inclusive.

`getCursorRow(void)`

Returns datatype: int

This method returns the current row position of the cursor in the T27 emulator screen (Native Environment Pane). Row positions are one-based rather than zero-based. In other words, in 24x80 mode, this method would return a value from 1 to 24, inclusive.

`getCols(void)`

Returns datatype: int

This method returns the native horizontal dimension of the current screen. (Due to possible mode changes in the course of host-program execution, this value can change from screen to screen. Do not depend on this value staying constant over the life of the component.) When a program is in 24x80 mode, this method will return 80. To loop over all columns of a screen, regardless of its native dimensions, you could do:

```
for (var i = 1; i <= Screen.getCols(); i++)
{
    var myCol = Screen.getTextAt( i, 1, Screen.getCols() );
    // do something with myCol
}
```

getNextMessage(void)

Returns datatype: string

The result of this method, when placed in a variable, returns the string representing the next captured message. The `setMessageCaptureOn()` method (see below) must be set in order for this method to return anything. In addition to these, there are two other messaging methods: `hasMoreMessages()` and `setMessageCaptureOff()`. Below is an example demonstrating how the four of them might all be used together:

```
function msgChecker(theScreen)
{
    theScreen.setMessageCaptureOn();
    while (theScreen.hasMoreMessages())
    {
        alert(theScreen.getNextMessage());
    }
    theScreen.setMessageCaptureOff();
}
```

getPrompt(void)

Returns datatype: string

The result of this method, when placed in a variable, returns the string representing all characters in the cursor's row, starting at column 1 and continuing to, but not including, the value returned by `getCursorCol()`—in other words, everything from the beginning of the line to the current cursor position. As an example:

```
var prompt=Screen.getPrompt();
alert(prompt);
```

NOTE: The string returned may or may not actually be a host prompt.

getRows(void)

Returns datatype: int

This method returns the native vertical dimension of the current screen. (Due to possible mode changes in the course of host-program execution, this value can change from screen to screen. Do not depend on this value staying constant over the life of the component.) When a program is in 24x80 mode, this method will return 24. To loop over all rows of a screen, regardless of its native dimensions, you could do:

```
for (var i = 1; i <= Screen.getRows(); i++)
```

```

{
    var myRow = Screen.getText( i, 1, Screen.getRows() );
    // do something with myRow
}
var wholeScreen = Screen.getText( 1, 1 + 24 * 80 ); // ERROR!

```

getStatusLine(void)

Returns datatype: string

The result of this method, when placed in a variable, returns an ECMAScript String that represents the black status line at the bottom of the Native Environment Pane. This status line is only enabled following a Check Screen action.

If you wished to create an alert stating the current status of the screen, for example, you could create a function action like the following:

```

var screenStatus = Screen.getStatusLine( );
alert( screenStatus );

```

getText(nRow, nColumn, nLength)

Returns datatype: String

This method returns an ECMAScript String that represents the sequence of characters (of length `nLength`) in the current screen starting at the row and column position specified. Note that `nRow` and `nColumn` are one-based, not zero-based. *A zero value for either of these parameters will cause an exception.*

To put the first half of the 20th row of a 24x80 screen into a variable, you would do:

```

var myRow = Screen.getText( 20, 1, 40 );

```

The `getText()` technique is used internally both for drag-and-drop Map actions involving screen selections (described in [“Selecting Continuous Data” on page 39](#)) and in the Check Screen action.

NOTE: If the amount of data selected by the function's arguments goes past the end of a screen line, no newlines or other special characters are inserted into the string.

getTextFromRectangle(nStartRow, nStartColumn, nEndRow, nEndColumn)

The `getTextFromRectangle()` method returns a single String consisting of substrings (one per row) comprising all the characters within the bounding box defined by the top left and bottom right row/column coordinates specified as parameters. So for example, in 24x80 mode, you could obtain the upper left quarter of the screen by doing:

```

var topLeftQuadrant = Screen.getTextFromRectangle( 1, 1, 12, 40 );

```

The `getTextFromRectangle()` method is used internally in drag-and-drop Map actions involving rectangular screen selection regions created using the Shift-selection method (see [“Selecting Rectangular Regions” on page 39](#)).

Note that the string returned by this method contains newline delimiters between substrings. That is, there will be one newline at the end of each row's worth of data. The overall length of the returned string will thus be the number of rows times the number of columns, plus the number of rows. For example, `Screen.getTextFromRectangle(1, 1, 4, 4).length` will equal 20.

hasMoreMessages(void)

The `hasMoreMessages()` method returns true if more messages are available to obtain via the `getNextMessage()` method, described above. This method is demonstrated along with the other messaging methods in the `getNextMessage()` method, described above.

putString(nRow, nColumn, textString)

The `putString()` method allows you to send data to a specific row/column location on the screen programmatically, without explicitly creating a Set Screen Text action. Example:

```
var goHome = "HOME";  
Screen.putString(2,14, goHome); // send string to screen
```

putStringInField(nFieldNumber, textString)

The `putStringInField()` method allows you to send data to a specific field on the screen programmatically, without explicitly creating a Set Screen Text action. In the MARC system, for example, there are typically two fields, the Action: field on the second line, and the Choice: field on the 21st line. The example below would have the same effect as the `putString` one above:

```
var goHome = "HOME";  
Screen.putStringInField( 1, goHome); // send string to screen
```

setMessageCaptureOff(void)

The `setMessageCaptureOff()` method turns off the message capture feature (see `setMessageCaptureOn()` below):

setMessageCaptureOn(void)

The `setMessageCaptureOn()` method turns on the message capture feature so that all host messages are stored for retrieval by the caller. This method is demonstrated along with the other messaging methods in the `getNextMessage()` method, described above.

typeKeys(String keys)

The `typeKeys(Str)` method allows the keystroke you represent by *string* to be emulated on the screen. The specified string will be placed at the current cursor position on the screen. A function containing the following text would have the same effect as a SendKey action:

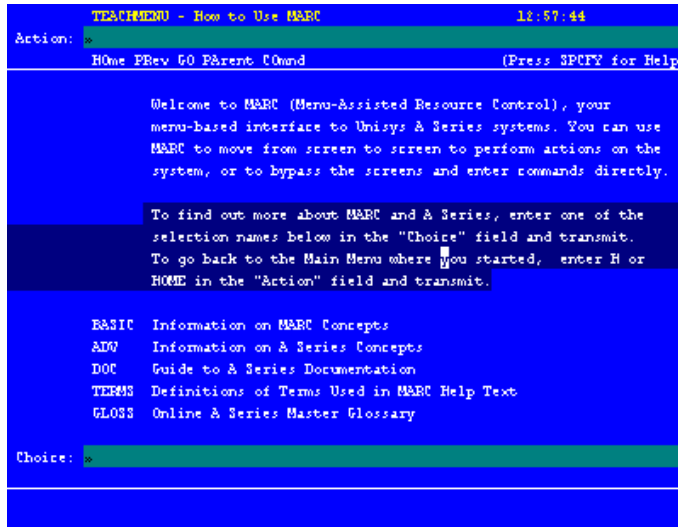
```
Screen.typekeys( "[Transmit]")
```

Multi-row Screen Selections in the T27 Connect

In record mode, it is possible to select multiple rows of data in a continuous stream, for purposes of dragging out to a DOM.

Selecting Continuous Data

When you drag across multiple rows of data without holding the Shift key down, *all* characters from the initial screen offset (at the mouse-down event) to the final screen offset (at mouse-up) are selected, as shown in the graphic below. (The selected text is “reversed out.”) A partial row has been selected, followed by two complete rows, followed by another partial row.



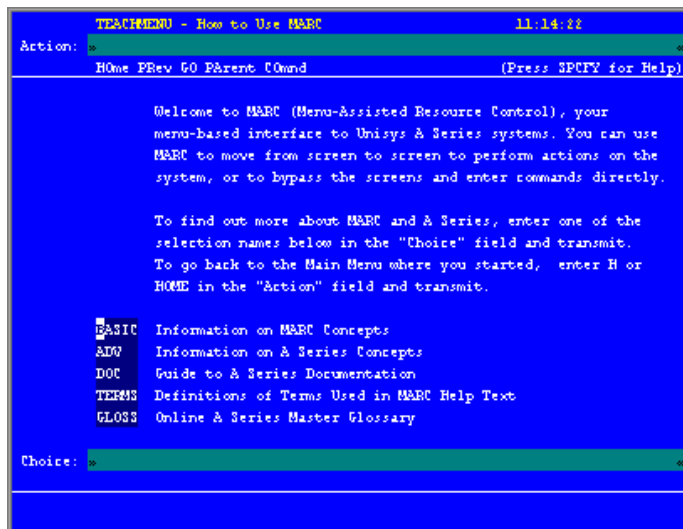
You will notice that as you drag, the component editor window’s status line in the lower left-hand corner reports the beginning and ending rows and columns of your selection. If you were to drag this selection out of the Native Environment Pane, into a DOM, a Map action would be generated as follows:

```
MAP Screen.getText(10,17,281) TO $Output/MARCOUTPUT/TEACHTEXT
```


Notice that the `getText()` method is used. This means the captured screen characters form one string, which is mapped to `Output/MarcOutput/Teachtext`. No newlines or other special characters are inserted into the string. (Any blank spaces highlighted in darker blue on the screen shown are simply represented as space characters in the string.)

Selecting Rectangular Regions

Sometimes you may not want the selection behavior described above. In certain cases, screen data may be grouped into zones with their own natural boundaries. For example, in the screen shown previously, you may want to capture (for drag-out purposes) just the five terms in the bottom left without their definitions and a lot of blank space. To do this, first hold the Control key down, then drag your mouse across the portion of the screen that you want to select. The selected area is highlighted and the appropriate row/column start and end points are displayed in the status line of the component editor’s window, as below:



In this instance, when you drag the rectangular highlight region out of the Native Environment Pane, into a DOM, the resulting Map action uses the `getTextFromRectangle()` method described above. The resulting action looks like:

 MAP `Screen.getTextFromRectangle(15,11,19,15)` TO `$Output/MARCOUTPUT/TEACH`

This method operates in a different fashion from `getText()`, because the string returned by `getTextFromRectangle()` is wrapped at the rectangle's right edge. Newlines are inserted at the wrap points as discussed in the API description of `getTextFromRectangle()`, further above.

5 T27 Components in Action

The Sample Transaction

For demonstration purposes, this guide uses a menu-driven system interface called MARC, Menu-Assisted Resource Control, offered for demonstration purposes by a third party. The transactions shown here in the form of screen captures will be representative of the type of transactions commonly used by operators on T27 terminals.

Recording a T27 Session

The T27 Component differs from other components in that a major portion of the Action Model is built for you automatically. This happens as you interact with the host in the Native Environment pane as part of a live T27 session. Integration Manager records your interactions as a set of auto-generated actions in the Action Model. Typically, in other Integration Manager components (such as a JDBC Component), you must manually create actions in the Action Model, which then perform the mapping, logging, transformation, communication, and other tasks required by the component or service. By contrast, when you create a T27 Component, you *record* requests and responses to and from the host, which end up as actions in the Action Model. In addition, you can add standard actions (Map, Log, Function, etc.) to the Action Model just the same as in other components.

NOTE: In order to successfully build a T27 Component, you should be familiar with the specifics of the host application you intend to use in your XML integration project.

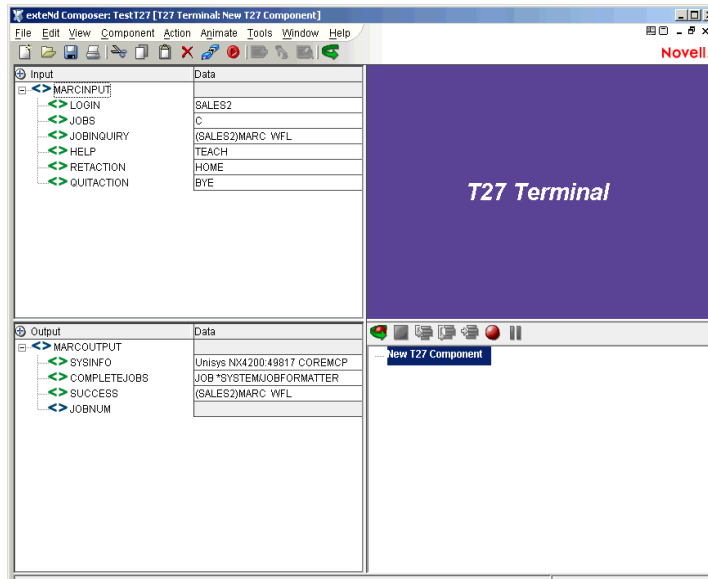
The following example demonstrates several common tasks that you will encounter in building T27 Components, such as:

- ◆ Automatic creation of Set Screen Text actions
- ◆ Automatic creation of Send Key actions
- ◆ Automatic reation of Check Screen actions
- ◆ Drag-and-drop mapping of Input DOM elements to T27-screen prompts
- ◆ Drag-and-drop mapping from the Native Environment Screen to the Output DOM
- ◆ The use of ECMAScript expressions to manipulate Screen object elements

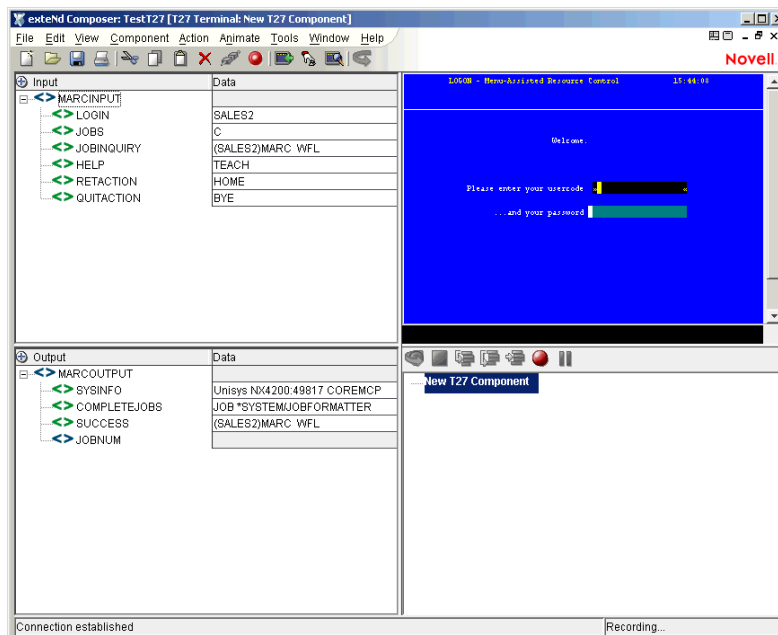
The following example starts with an input XML document that contains several transactional commands for the MARC system to process. The goal of this particular component is to process these commands on MARC to determine the last job completed and place the name of that job in the Output DOM.

➤ **To record a T27 session:**

- 1 Create a T27 Component per the procedure shown in Chapter 3, “Creating a T27 Component”.
- 2 Once created, the T27 Component Editor window appears, with the words “T27 Terminal” in the center of the Native Environment Pane, indicating that no connection has yet been established with a host.



- 3 Click the **Record** button. You are automatically connected to the host that you selected in the Connection Resource for the component. An input screen appears in the Native Environment pane as shown below.



- 4 Drag the MARCINPUT/LOGIN node from the Input DOM to the first field in the Native Environment Pane. (Don't worry about exact placement within the field.) "SALES2" (without quotation marks) appears as your usercode and a new Set Screen Text action appears automatically in the Action Model.
- 5 Again, drag the MARCINPUT/LOGIN node from the Input DOM, but this time place it in the second field in the Native Environment Pane. ("SALES2" will not appear in the password field because it is a protected field on this screen.) A second Set Screen Text action appears automatically in the Action Model. If you examine the two actions, you will notice that they differ only in their row/column placements.



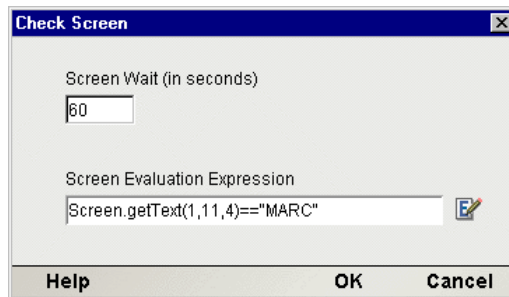
- 6 Press the F12 Key. You will see that a Send Key Transmit Action is added to your Action Model.



- 7 In response to the Set Screen Text and Send Key Actions, the T27 screen redraws itself into the Home Menu:




- 8 As discussed above in Chapter 4, “The Check Screen Action” it is a wise idea to make sure you are on the correct screen before proceeding. To do this, begin by dragging your cursor over the word “MARC” in the upper left-hand corner. Notice that the status line of the component editor window in the lower left corner will indicate the row and column location where the word starts and ends. Using your right mouse button in the Native Environment pane, click **Check Screen**. A Check Screen action including a Screen.getText method automatically appears, verifying that the word “MARC” does appear where expected on the screen.



Decide whether the default Screen Wait time (in this case 60 seconds) is going to be adequate for this Check Screen action. The MARC program has a relatively quick response time. (Even so, careful testing of the component should be done in order to verify that this timeout value is safe.) Click on **OK** to enter the Check Screen action into your Action Model.

- 9 Now, let's map something from the Native Environment panel back to the Output DOM. Suppose you are interested in verifying what type of Unisys mainframe you're working on. The lower left-hand corner of the emulator screen tells you this information. Click and Drag your cursor from the word Unisys to the beginning of the word MARC. Again, as you click and drag, the onscreen row/column coordinates of the selected area are displayed in the status line.


Drag the information you have highlighted into the SYSINFO node of the Output DOM. A new Map Action appears in the Action Model:

 MAP Screen.getText(23,2,28) TO \$Output/MARCOUPTUT/SYSINFO

- 10 Having verified that you are on the correct screen and using the correct system, you can begin typing some commands. Click anywhere in the "Choice:" field of the T27 environment pane and type **JD**.

NOTE: Unisys commands are often case-sensitive and are often entered in ALL CAPS.

A new Set Screen Text action appears automatically in your component's action list. Notice that the letters 'JD' are already in the action along with the screen coordinates for the field.

 CHECK SCREEN for Expression: Screen.getText(1,11,2)=="JD"

- 11 Being a T27 connection, nothing will happen until you press the Transmit key, so press F12 again to add another Send Key Transmit action to the model.
- 12 In response to the 'JD' command you transmitted, the host program sends a new menu screen shown below.



- 13 As always, it is a good idea to make sure you are on the expected screen, so highlight the letters "JD" at the top of the screen and right click to create another Check Screen Action to evaluate your screen's readiness to continue. In this example, the expression will be set to:

`Screen.getText(1,11,2) == "JD"`

Click **OK** and your Check Screen action appears in the action list.

- 14 Drag the MARCINPUT/JOBS node from the Input DOM to the Choice: field in the Native Environment Pane. "C" (without quotation marks) appears in the field and a new Set Screen Text action appears automatically in the Action Model. In this menu, "C" is an abbreviation for "Completed Jobs".
 - 15 Add another Send Key Transmit by pressing F12.
 - 16 Add another Check Screen Action to ensure that you are in the correct menu. This time, check for the word "OUTPUT":
- `Screen.getText(1,11,6) == "OUTPUT"`
- 17 In the Native Environment Pane, select the name of the first completed job by highlighting the terminal-screen text in row 8 from column 35 to wherever the text ends, by clicking and dragging the mouse. The text will appear highlighted.

```

OUTPUT - MARC COMMAND OUTPUT 17:13:34
Action:
Home 50 Return Command Store + - (Press SPCPY for Help)

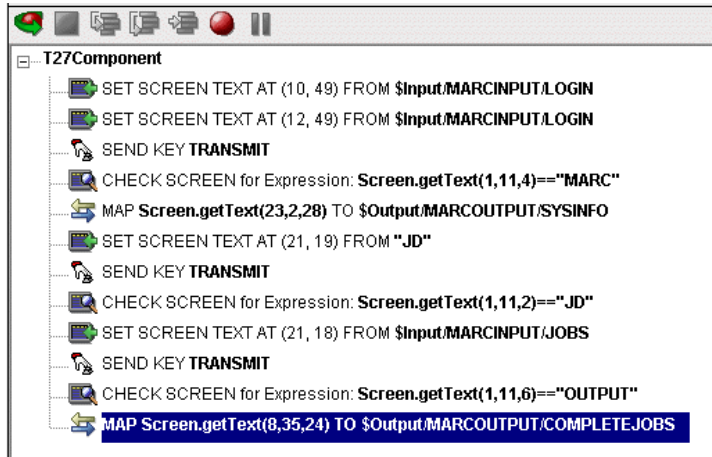
Response returned at 17:13:34

-----Job--Task-Time--Hist----- 18 COMPLETED ENTRIES USER=SALES2-----
2111/ 2111 14:14 EOT (SALES2) JOB *SYSTEM/JOBFORMATTER
2110/ 2110 14:14 EOT (SALES2) JOB JOBFIL/CONVERTER
2106/ 2106 14:09 EOT (SALES2) JOB *SYSTEM/SUPPLUS/FORMSUPPORT
2100\ 2104 14:09 P-DS (SALES2) *SYSTEM/IDMANAGER
2100\ 2102 14:06 EOT (SALES2) (SALES2)MARC OPT
2097/ 2097 12:13 EOT (SALES2) JOB *SYSTEM/JOBFORMATTER
2096/ 2096 12:13 EOT (SALES2) JOB JOBFIL/CONVERTER
2094\ 2095 12:14 P-DS (SALES2) *SYSTEM/ERGO
2097/ 2097 10:23 EOT (SALES2) JOB *SYSTEM/JOBFORMATTER
2096/ 2096 10:23 EOT (SALES2) JOB JOBFIL/CONVERTER
2047\ 2055 10:18 P-DS (SALES2) *SYSTEM/ERGO
2051/ 2051 10:15 EOT (SALES2) JOB *SYSTEM/SUPPLUS/FORMSUPPORT
2047\ 2049 10:15 EOT (SALES2) *SYSTEM/IDMANAGER
2021/ 2048 10:11 EOT (SALES2) (SALES2)MARC/PS-COMMAND/HANDLER

```

- 18 Lift your finger off the mouse button and place the mouse over the selected text. Click-drag the selection to the Output DOM **MARCOOUTPUT/COMPLETEJOBS** node. The selected text is inserted into the DOM at the desired location, and a new Map Action is generated in the Action Model automatically.
- 19 Click the Record button to turn recording off.
- 20 Save your component.

If you were successfully able to follow all the steps outlined above, your complete Action Model would



now look like this:

Obviously, this is a fairly simple component that does not accomplish much real work. In using Integration Manager to build T27 components, your initial recorded component may only be a starting point. For this reason, it is important to study how to edit existing action models.

Editing a Previously Recorded Action Model

You will encounter times when you need to edit a previously recorded action model. Unlike the situation with other components, editing a T27 Component requires extra attention. When a T27 Component executes, it plays back a sequence of actions that expect certain screens and data to appear at certain times in order to work properly. So when editing a component you must be careful not to make the action model sequence inconsistent with the host program execution sequence you recorded earlier (i.e., don't break it!).

In general, to ensure successful edits, the following recommendations apply:

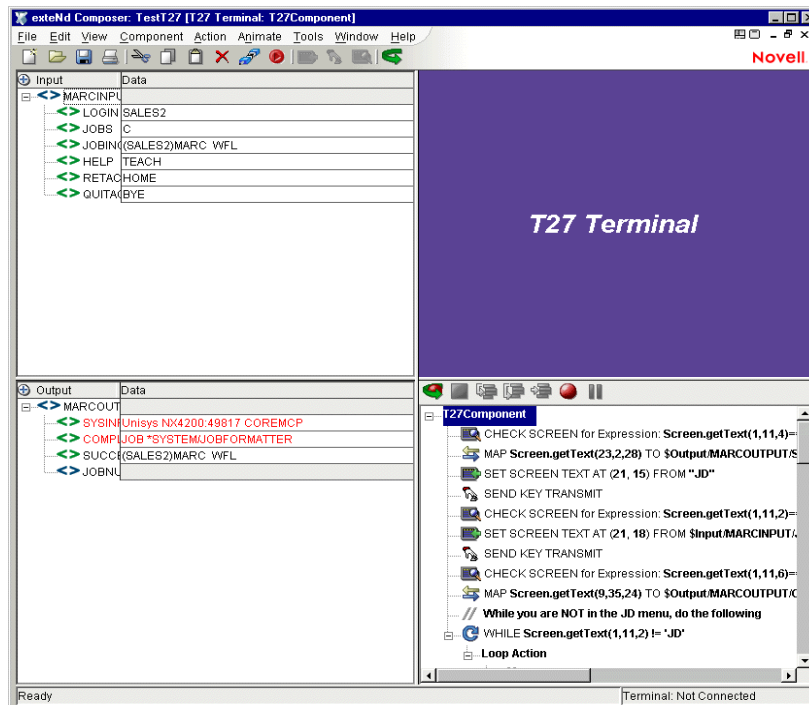
- ◆ Exercise extreme care when using Cut, Copy, and/or Paste to delete, move, or replicate actions in your Action Model. Actions that were created automatically during a “Record” session will often create data dependencies that are easily overlooked in the editing process.
- ◆ When you need to use drag-and-drop to add new Map actions to your Action Model, click the Start Animation button in the Action Pane toolbar and step to the line of interest in your Action Model; then Pause animation and turn on Record mode. At this point, you can safely drag to and from the screen. Following this procedure will prevent your Action Model from getting out of sync with the host or conflicting with previously mapped DOM data.

Editing or Adding to an Existing Action

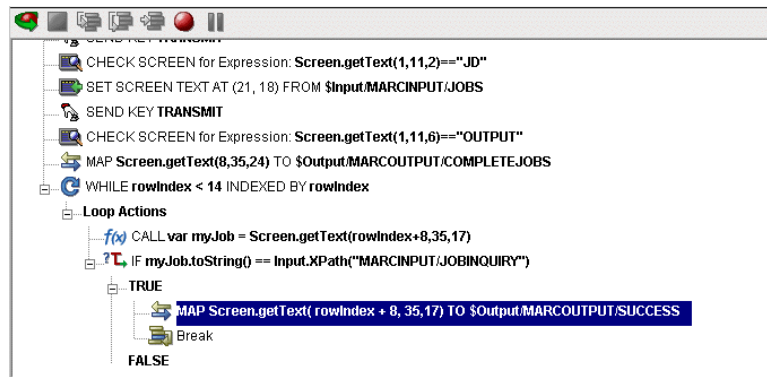
The following procedure will explain how to change an existing action or add new actions to a previously recorded session.

➤ To Change an existing action in a previously recorded Action Model:

- 1 Open the component that includes the Action Model you'd like to edit. The component appears in the T27 Component Editor window.

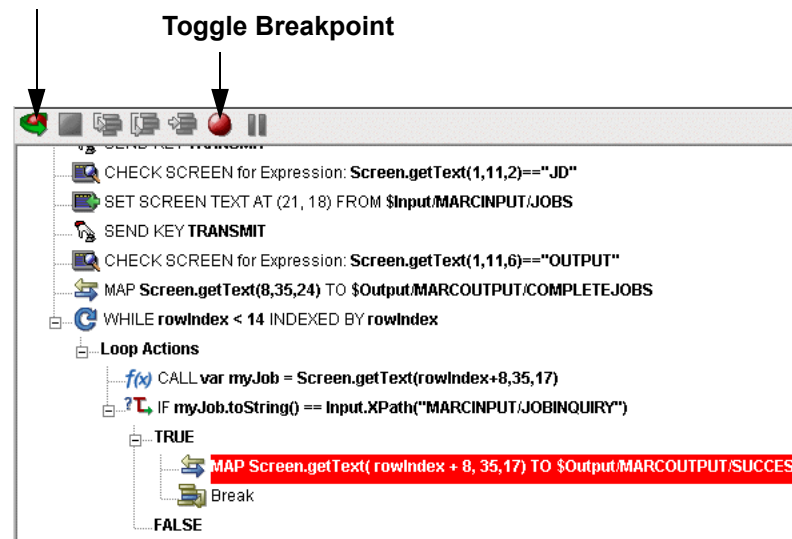


- 2 Navigate to the action in the Action Model where you'd like to make your edit or after which you'd like to add additional actions and highlight that action.



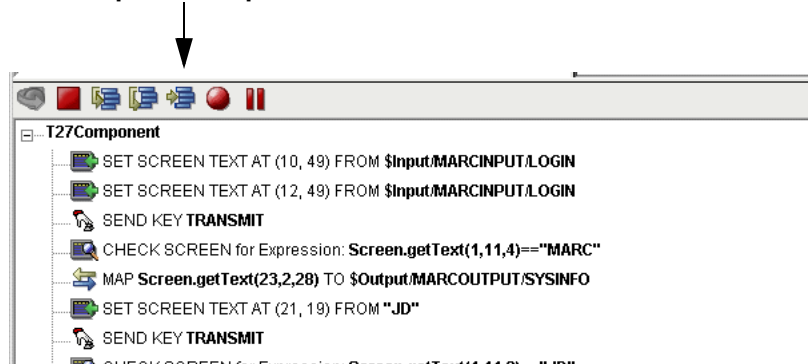
- 3 Click the **Toggle Breakpoint** button (or press **F2**). The highlighted action becomes red (Animation will be discussed in further detail below).

Start Animation



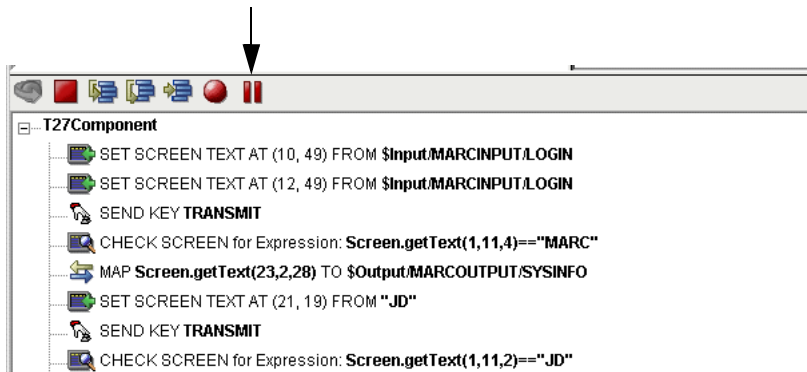
- 4 Click the **Start Animation** button. The animation tools (in the Actions pane's toolbar) become enabled.
- 5 Click the **Step to Breakpoint/End** button. The Action Model executes all of the actions from the beginning of the Action Model to the breakpoint you set in step 3 above.

Step to Breakpoint/End



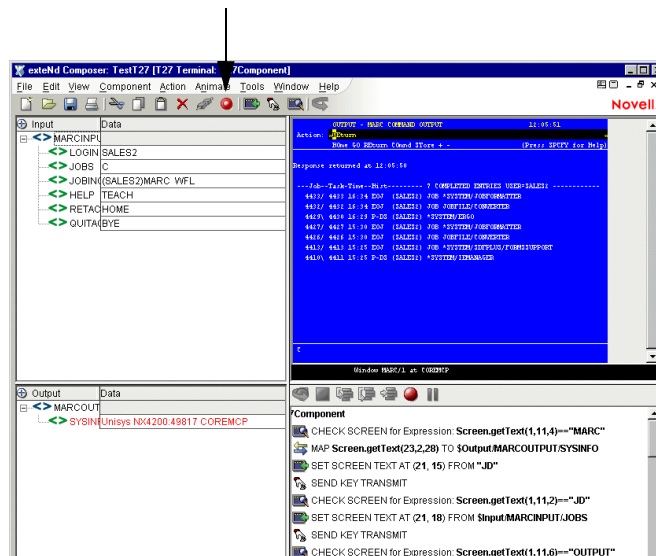
- 6 Press the **Pause Button**:

Pause



- 7 In the Component Editor tool bar, click the **Record** button.

Record button



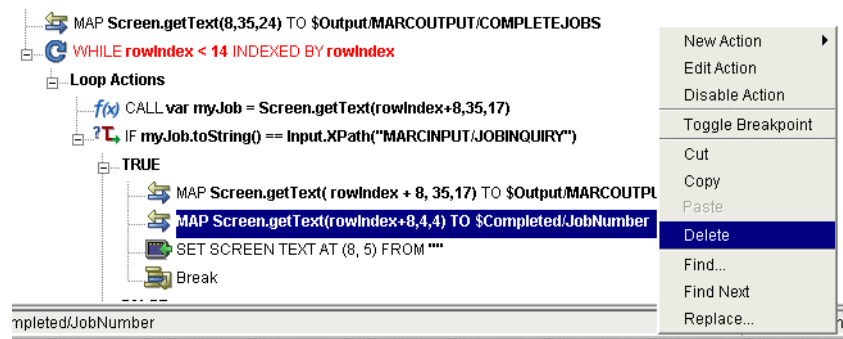
- 8 Edit the action to make any changes you wish to the current line by right-clicking on the action and selecting **Edit Action**. Or, if you wish to add new actions, use Integration Manager's drag and drop features to add new Map actions that interact with the screen. The new actions will be added directly under the highlighted line.
- 9 Turn off recording. (Toggle the **Record** button.)
- 10 Test your component.

Deleting an Action

The following procedure explains how to delete an action in a previously recorded session

- **To Delete an Action to a previously recorded Action Model:**

Highlight the action line that you want to delete and click on the right mouse button. Select **Delete** from the menu. You may also highlight the line and press the Delete button on your keyboard.

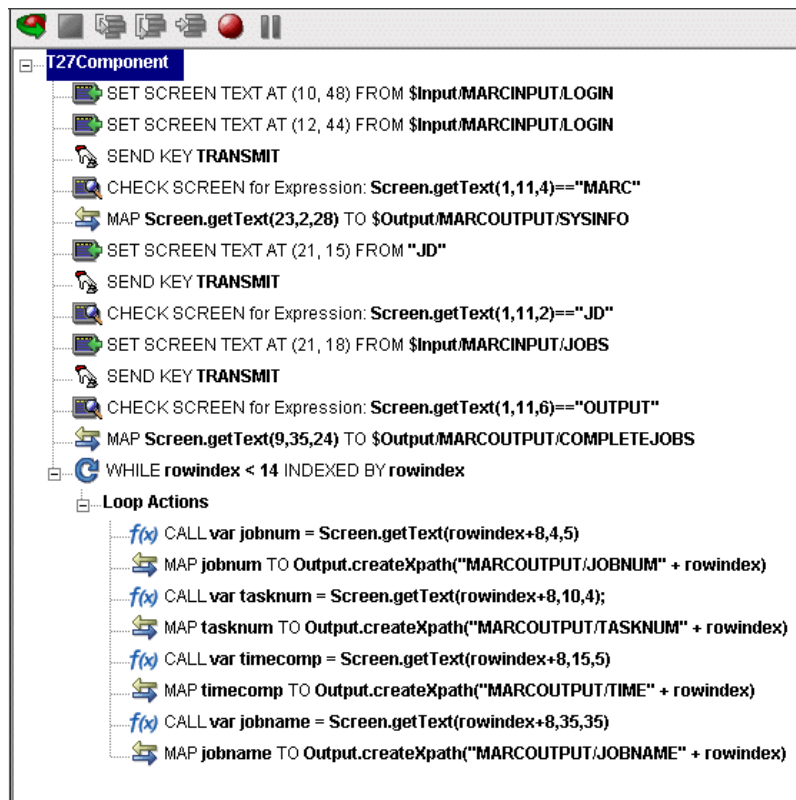


Looping Over Multiple Rows in Search of Data

In the MARC example (above), the goal was to find out what jobs had been completed and map the name of the most recent of those jobs to the Output DOM. The name of this job could have been used as input to another component or to a web service.

By simple visual inspection of the OUTPUT menu of the terminal emulator screen, it's easy to see that several jobs were complete, not just the one mapped in the example. Suppose you wanted know the job numbers, names and times of completion for all jobs? To do this, you would need to iterate through several lines of the terminal screen, placing the key values in the Output DOM. This could be accomplished using a Repeat/While loop, which is explained in detail in Chapter 8 of the *Novell Integration Manager User's Guide* in the section titled "The Repeat While Action." Often, in T27 components you will find that you need to perform some form of looping in order to read the values from the terminal window. Make sure you are very familiar with this chapter of the *Novell Integration Manager User's Guide*.

Below is an example of a completed Action Model containing a Repeat/While loop that fills in an Output DOM with several values obtained from the terminal window. In the example above, you used drag and drop to place a single value from the list of completed jobs into a single pre-existing node in the Output DOM. Here, each job has been placed in it's own node along with some sub-nodes which could also be used as attributes.



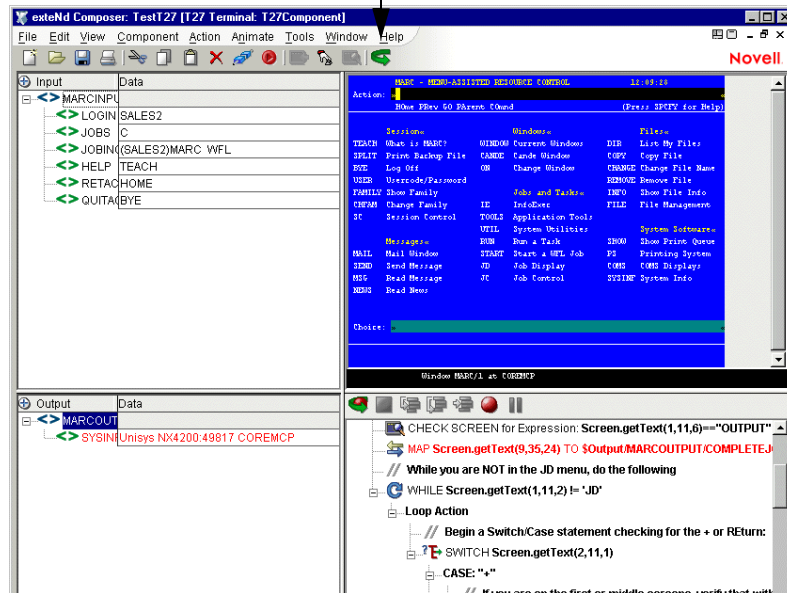
Testing your T27 Component

As mentioned previously, Integration Manager includes animation tools that allow you to easily test your component. There is also an Execution button on the UTS Component Editor tool bar, which allows you to execute the entire Action Model and verify that your component works as you intend. While testing, pay close attention to your Screen Wait Time values in all Check Screen actions to make sure they are appropriate and that Set Screen Text and other actions work as intended.

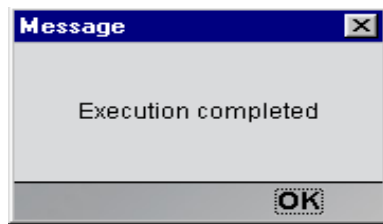
➤ **To execute a T27 Component:**

- 1 Open a T27 Component. The T27 Component Editor window appears.

Execute button



- 2 Select the **Execute** button. All the actions in the Action Model execute in order. If the component executes successfully, a message appears as follows.



- 3 Click **OK**.

After executing the component, you may want to double check the contents of your DOMs to be sure all of the appropriate data mappings occurred as expected. To make all data elements visible, select **Expand XML Documents** from the **View** menu. This expands all of the parents, children, data elements, etc. of the DOM trees, so that you can easily see the results of execution of the component. If your execution had a problem, you can use the Animation tools to pinpoint where the difficulty occurred. This process is described in the next section.

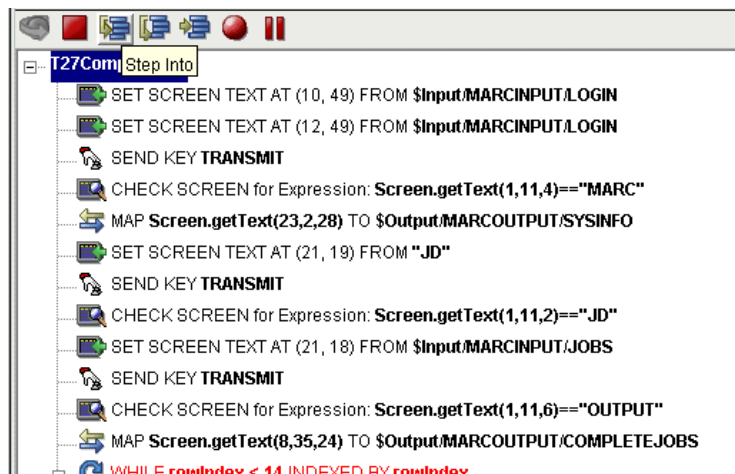
Using the Animation Tools

In the Action Model, you'll find animation tools that allow you to test a particular section of the Action Model by setting one or more breakpoints. The Toggle/Breakpoint tool was introduced briefly in [“Editing or Adding to an Existing Action” on page 46](#), but all the animation tools will be explored in more detail below. Using these tools, you can run through the actions that work properly, stop at the actions that are giving you trouble, and then troubleshoot the problem actions one at a time.

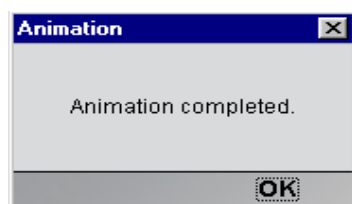
•The following procedure is a brief example of the functionality of the animation tools. For a complete description of all the animation tools and their functionality, please refer to the *Novell Integration Manager User's Guide*.

➤ To run a T27 Component using Animation Tools:

- 1 Open a T27 Component. The component appears in the T27 Component Editor window.
NOTE: Animation and Recording are *mutually exclusive modes* in the component. In order to record during animation, you must either pause, or stop animation and then turn on record mode.
- 2 Click the **Start Animation** button in the Action Model tool bar, or press **F5** on the keyboard. All of the tools on the tool bar become active, and a connection is established with the host. The Native Environment Pane becomes active.
- 3 Click the **Step Into** button. The first Check Screen action becomes highlighted.



- 4 Click the **Step Into** button again. The Check Screen action (above) executes and the next action becomes highlighted.
- 5 Click the **Step Into** button repeatedly to execute actions one-by-one.
- 6 Click other buttons (Step Over, Run To Breakpoint, Pause, etc.) as desired to control the execution of the component. Note that you can set a breakpoint at any time during execution by clicking the mouse on an action line and hitting F2 or using the Set Breakpoint button.
- 7 Once animation is complete, the following message appears.



Data Sets that Span Screens

T27-based computing differs from other types of computing (including other terminal-based interactions) in the following ways:

- ◆ Retrieval of data sets may require repeated roundtrip communications with the Unisys host. One query may bring many screens' worth of data, which must be captured through multiple "page forward" commands, etc.
- ◆ Information that spans screens may be (and often is) partially duplicated on the final screen.

These factors can make automating a T27 interaction (via an Action Model) challenging. Suggestions on how to deal with these issues, as well as an example, are given below.

Multiple Screens

A common requirement in T27 computing is to capture a data set that spans multiple screens. If this is the case, most Unisys hosts will display a "+" sign in the Action field to indicate that the data continues on the next screen.

It is not always obvious how many screens' worth of data there may be. Generally, the only clue that you have may be the presence of a the + sign in the Action field which changes to "Return" when you reach the final screen.

The point is that if your query results in (potentially) more than one screen's worth of information, you must be prepared to iterate through all available screens using a Repeat/While action, and stop when no additional screens are available. You will have to supply your own custom logic for deciding when to stop iterating. Your logic might depend on one or more of the following strategies:

- ◆ Determine the total number of screens to visit by "scraping" that information, if available, off the first screen.
- ◆ Divide "total records" (if this information is available) by the number of records per screen (if this is known in advance), and add one.
- ◆ Visit screens one-by-one and break when a blank record is detected.
- ◆ Visit screens one-by-one until a special string (such as "End" or "Go Back") is detected.
- ◆ Visit screens one-by-one until two consecutive identical screens have been encountered.

Obviously, the strategy you use will depend on the implementation specifics of the host application in question.

Dealing with Redundant Data

In T27 host applications, it's common for the final screen of a multiscreen result set to be "padded" with data from the previous screen. In this way, the appearance of a full screen is maintained.

Consider the following two screen shots. The top one shows the first screen's worth of information after transmitting a command that returns two screens of information. Notice the + sign in the Action field of the first screen indicating that there is more data to follow.

```

OUTPUT - MARC COMMAND OUTPUT          16:52:54
Action: +
Home 50 REturn CQand STore + -        (Press SPCFY for Help)

Response returned at 16:52:54

---Job--Task--Time--Hist----- 18 COMPLETED ENTRIES USER=SALES2 -----
2111/ 2111 14:14 E0J (SALES2) JOB *SYSTEM/JOBFORMATTER
2110/ 2110 14:14 E0J (SALES2) JOB JOEFILE/CONVERTER
2106/ 2106 14:09 E0J (SALES2) JOB *SYSTEM/SDFPLUS/FORMSUPPORT
2100\ 2104 14:09 P-DS (SALES2) *SYSTEM/IEMANAGER
2100\ 2102 14:06 E0T (SALES2) (SALES2)MARC WFL
2097/ 2097 12:19 E0J (SALES2) JOB *SYSTEM/JOBFORMATTER
2096/ 2096 12:19 E0J (SALES2) JOB JOEFILE/CONVERTER
2094\ 2095 12:14 P-DS (SALES2) *SYSTEM/ER60
1957/ 1957 10:22 E0J (SALES2) JOB *SYSTEM/JOBFORMATTER
1956/ 1956 10:22 E0J (SALES2) JOB JOEFILE/CONVERTER
1949\ 1955 10:18 P-DS (SALES2) *SYSTEM/ER60
1951/ 1951 10:15 E0J (SALES2) JOB *SYSTEM/SDFPLUS/FORMSUPPORT
1949\ 1949 10:15 E0T (SALES2) *SYSTEM/IEMANAGER
1621/ 1948 10:11 E0T (SALES2) (SALES2)MARC/PS-COMMAND/HANDLER
C

```

Pressing the Transmit Key (or F12), brings up the second screen. There are several things to notice about this second (and, in this case, final) screen:

- The + sign in the Action: field has been replaced by the word “REturn”. Sending the Transmit Key here would return you to the Job and Task Display Menu.
- The second screen shows exactly the same records as the first one, except for job number 2111/2111, which drops off to make room for four of the 1621 jobs because the second screen is limited to listing 17 lines of jobs. (The first screen had only 14 lines of data, because there were three lines worth of header information). The majority of this screen is showing us redundant data.
- Another + sign appears on the screen, this time in marking the fourth-to-last job on the screen. MARC provides us with a convenient way to see where the list splits and where the data ceases to be redundant.

```

CONTINUATION - MARC COMMAND OUTPUT    16:57:26
Action: REturn
Home 50 REturn CQand STore + -        (Press SPCFY for Help)

2110/ 2110 14:14 E0J (SALES2) JOB JOEFILE/CONVERTER
2106/ 2106 14:09 E0J (SALES2) JOB *SYSTEM/SDFPLUS/FORMSUPPORT
2100\ 2104 14:09 P-DS (SALES2) *SYSTEM/IEMANAGER
2100\ 2102 14:06 E0T (SALES2) (SALES2)MARC WFL
2097/ 2097 12:19 E0J (SALES2) JOB *SYSTEM/JOBFORMATTER
2096/ 2096 12:19 E0J (SALES2) JOB JOEFILE/CONVERTER
2094\ 2095 12:14 P-DS (SALES2) *SYSTEM/ER60
1957/ 1957 10:22 E0J (SALES2) JOB *SYSTEM/JOBFORMATTER
1956/ 1956 10:22 E0J (SALES2) JOB JOEFILE/CONVERTER
1949\ 1955 10:18 P-DS (SALES2) *SYSTEM/ER60
1951/ 1951 10:15 E0J (SALES2) JOB *SYSTEM/SDFPLUS/FORMSUPPORT
1949\ 1949 10:15 E0T (SALES2) *SYSTEM/IEMANAGER
1621/ 1948 10:11 E0T (SALES2) (SALES2)MARC/PS-COMMAND/HANDLER
+ 1621/ 1947 10:11 E0T (SALES2) (SALES2)MARC/PS-COMMAND/HANDLER
1621/ 1946 10:09 E0T (SALES2) (SALES2)MARC/PS-COMMAND/HANDLER
1621/ 1945 10:07 E0T (SALES2) (SALES2)MARC/PS-COMMAND/HANDLER
1621/ 1944 10:07 E0T (SALES2) (SALES2)MARC/PS-COMMAND/HANDLER

```

In most cases, you will not want to capture this sort of redundant data. Fortunately, MARC makes it fairly simple to detect and reject redundant records by placing the + sign at the first column to the left in the list where the data begins to be new. This can be used along with ECMAScript as an easy and convenient way of maintaining unduplicated lists. The basic steps to do this would be:

- Enter a Repeat/While loop checking the name of the screen.
- Create a Switch Statement depending on whether the screen is continued or not.
- Within each case of the Switch Statement, enter a Repeat While loop and fetch each record to place it into a variable as shown in the example above.
- After the loop is complete, send a Transmit Key to go on to the next screen.

A completed Action Model which scrolls through two screens of data and eliminates redundancies would look something like the one below.

NOTE: In order to accommodate the large size of this screen, this action model picks up where the one in "Recording a T27 Session" earlier in this chapter left off.

```

MAP Screen.getText(9,35,24) TO $Output/MARCOOUTPUT/COMPLETEJOBS
// While you are NOT in the JD menu, do the following
WHILE Screen.getText(1,11,2) != 'JD'
  Loop Actions
  // Begin a Switch/Case statement checking for the + or Return:
  SWITCH Screen.getText(2,11,1)
  CASE: "+"
    // If you are on the first or middle screens, verify that with a Check Screen:
    CHECK SCREEN for Expression: Screen.getText(1,11,6)=="OUTPUT"
    // There are 21 rows of data on the first screen, with 8 rows of header info.
    // Since we start counting at 0, we need to iterate 13 times (21-8)
    WHILE rowindex <= 13 INDEXED BY rowindex
      Loop Action
      // Remember to always account for the 8 rows of header info on iteration
      f() CALL var jobname = Screen.getText(rowindex+8,35,35)
      MAP jobname TO Output.createXPath("MARCOOUTPUT/JOBNAME" + rowindex)
      // Another check screen check here, and act on it once we determine...
      CHECK SCREEN for Expression: Screen.getText(1,11,6)=="OUTPUT"
      IF Screen.getText(1,11,6)=="OUTPUT"
        TRUE
        // If we are on the right screen, we want to get to the next screen by Transmitting.
        SEND KEY TRANSMIT
        CHECK SCREEN for Expression: Screen.getText(1,11,4)=="CONT"
      FALSE
      LOG "Wrong screen. Verify Screen Wait times." TO System Output using Log Level 5
      Break
    CASE: "R"
      // Verify that we are on the Next Screen
      CHECK SCREEN for Expression: Screen.getText(1,11,4)=="CONT"
      WHILE rowindex < 21 INDEXED BY rowindex
        Loop Action
        // Find out where non-redundant data starts by looking for the + sign
        IF Screen.getText(rowindex,1,1)=="+"
          TRUE
          f() CALL newrow=rowindex
          FALSE
          LOG "Continue" TO System Output using Log Level 5
        CHECK SCREEN for Expression: Screen.getText(1,11,4)=="CONT"
        // There are 21 rows of data in the second screen, including 4 rows of header info
        // Subtract the row number where new data starts from the total number of rows on the second screen.
        WHILE rowindex <= (20 - newrow) INDEXED BY rowindex
          Loop Action
          f() CALL var jobnum = Screen.getText(rowindex+newrow,4,5)
          MAP jobnum TO Output.createXPath("MARCOOUTPUT/JOBNUM" + rowindex+newrow)
          f() CALL var tasknum = Screen.getText(rowindex+newrow,10,4);
          MAP tasknum TO Output.createXPath("MARCOOUTPUT/TASKNUM" + rowindex+newrow)
          f() CALL var timecomp = Screen.getText(rowindex+newrow,15,5)
          MAP timecomp TO Output.createXPath("MARCOOUTPUT/TIME" + rowindex+newrow)
          f() CALL var jobname = Screen.getText(rowindex+newrow,35,35)
          MAP jobname TO Output.createXPath("MARCOOUTPUT/JOBNAME" + rowindex+newrow)
          SEND KEY TRANSMIT
          CHECK SCREEN for Expression: Screen.getText(1,11,2)=="JD"
      Default
      LOG "Unknown Screen " TO System Output using Log Level 5
  
```

Tips for Building Reliable T27 Components

The following tips may be helpful to you in building reliable T27 Components.

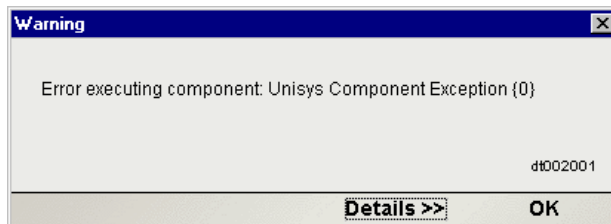
- ◆ Always follow a Set Screen Text Action with a Send Key Action.
- ◆ Always follow your Send Key Action with a Check Screen Action.
- ◆ Remember that the default Screen Wait values used in Check Screen actions are set when you initially created your Connection resource. To change the default Screen Wait time, you must change the property of the Connection Resource.
- ◆ Remember also that Screen Wait timeout values may need to be increased, for load-sensitive applications. Careful testing will reveal these sorts of problems.
- ◆ Be careful when editing a previously recorded Action Model. Deleting or modifying a single Set Screen Text Action can (and will!) throw your entire Action Model off course.

Using Other Actions in the T27 Component Editor

In addition to the Set Screen Text, Send Key and Check Screen actions, you have all the standard Basic and Advanced Integration Manager actions at your disposal as well. The complete listing of Basic Integration Manager Actions can be found in Chapter 7 of the *Novell Integration Manager User's Guide*. Chapter 8 contains a listing of the more Advanced Actions available to you.

Handling Errors and Messages

In testing a T27 Component, you may encounter errors relating to Set Screen Text, Send Key and/or Check Screen actions. The result is a dialog similar to the following:



This section discusses possible error conditions and how to deal with errors like these.

Check Screen Errors

Most of the errors you are likely to encounter at execution time will be related to Check Screen actions. Generally speaking, your Check Screen errors will be timeout errors which means that the go-ahead criteria you specified in the Check Screen setup dialog *were not met within the Screen Wait imeout period*. Clicking the **Details** button on the error dialog will verify this. Therefore, you should first try to determine whether slow host response might be the real problem (in which case, the solution is to increase the Screen Wait time for the Check Screen action in question). If the error still occurs after the Screen Wait time has been increased, then you can be sure the error is due to an incorrect or inappropriate go-ahead condition in your Check Screen action.

“Screen Check Expression {0} was evaluated as false”

This error happens when the ECMAScript expression you used for your Check Screen go-ahead happens to evaluate as *false* at execution time. Once again, it’s important to realize that this sort of error can be triggered simply on the basis of slow host response (timeout). When the host is slow to respond, it means that your ECMAScript expression will be evaluated on the basis of *whatever is in the screen buffer as of the moment of timeout*. If no data (or insufficient data) have arrived, the expression is bound to evaluate as false.

To fix this sort of problem, either increase the Screen Wait time for this Check Screen action (if you suspect that the problem is host latency) or try modifying the logic in your ECMAScript expression.

Set Screen Text Errors

Errors generated by Integration Manager from Set Screen Text action will, in general, be rare. This is because you are given a great deal of leeway in your ability to send whatever you like to the screen. Where you will more often run into trouble is on the application side. Unisys hosts are very particular about the input they will accept. If the text you send in your Set Screen Text action is not what the host expects, you will receive host-side errors and the rest of your Integration Manager Action model will not proceed as expected. The way to avoid problems here is to make sure that for every Set Screen Text/Send Key action combination, there is always a corresponding Check Screen action.

Finding a “Bad” Action

When you have a large Action Model (containing dozens or hundreds of Set Screen Text, Send Key and Check Screen actions), simply locating the action that’s responsible for an error can be a challenge. One way to find the problematic action is to:

- 1** Select and Copy some of the text in the error dialog. (Click the Details button if need be, to expose the full error description. Highlight the relevant text, such as cursor coordinates. Then use Control-C to Copy.)
- 2** Click inside the Action Model.
- 3** Use Control-F to initiate a search.
- 4** Paste the error text into the search dialog.
- 5** Execute the search.

Of course, if you have multiple Check Screen actions that are based on identical go-ahead criteria, the foregoing technique won’t necessarily be helpful. If that’s the case, set a breakpoint at the midpoint of your Action Model, and run the component. If the error doesn’t occur, move the breakpoint to a spot halfway between the original breakpoint and the end of the action list. (Otherwise, if the error *does* happen, set the breakpoint at a spot one quarter of the way down from the top of the action list.) Run the component again. Keep relocating the breakpoint, each time *halving* the distance between the last breakpoint or the top or bottom of the action list, as appropriate. In this way, you can quickly narrow down the location of the problematic action. (Using this “binary search” strategy, you should be able to debug an Action Model containing 128 actions in just 7 tries.)

Performance Considerations

You can perform second-based timing of your Action Model's actions by wrapping individual actions (or block of actions) in timing calls.

➤ **To time an Action:**

- 1 Click into the Action Model and place a new **Function Action** immediately before the action you wish to time. (Right-mouse-click, then **New Action > Function**.)
- 2 In the Function Action, enter an ECMAScript expression of the form:

```
startTime = Number(new Date)
```
- 3 Insert a new **Function Action** immediately *after* the action you wish to time.
- 4 In the Function Action, enter an ECMAScript expression of the form:

```
endTime = Number(new Date)
```
- 5 Create a **Map Action** that maps `endTime - startTime` to a temporary DOM element. (Right-mouse-click, **New Action > Map**.)
- 6 Run the Component. (Click the **Execute** button in the main toolbar.)

If you do extensive profiling of your Action Model, you will probably find that the overwhelming majority of execution time is spent in Check Screen actions. Two implications of this worth considering are:

- ◆ ECMAScript expressions (in Map and/or Function actions) will seldom, if ever, be a performance consideration for the component as a whole.
- ◆ Overall component performance rests on careful tuning of Screen Wait timeout values in Check Screen actions.

Finally, remember that testing is not truly complete until the deployed service has been tested (and proven reliable) on the app server.

For additional performance optimization through the use of shared connections, be sure to read the next chapter, on Logon Components.

6

Logon Components, Connections, and Connection Pools

This section discusses certain features available in the T27 Connect designed to maximize performance of deployed services.

About T27 Terminal Session Performance

The overall performance of any service that uses back-end connectivity is usually dependent on the time it takes to establish a connection and begin interacting with the host. Obtaining the connection is “expensive” in terms of wait time. One strategy for dealing with this is *connection pooling*, a scheme whereby an intermediary process (whether the app server itself, or some memory-resident background process not associated with the server) maintains a set number of preestablished, pre-authenticated connections, and oversees the “sharing out” of these connections among client apps or end users.

Connection pooling overcomes the latency involved in opening a connection and authenticating to a host. But in terminal-based applications, a considerable amount of time can be spent “drilling down” through menu selections and navigating setup screens in order to get to the first bonafide application screen of the session. So even when connections are reused through pooling, session-prolog overhead can be a serious obstacle to performance.

Integration Manager addresses these issues by providing connection pooling, managed by a special kind of component (called a *logon component*) that can maintain an open connection at a particular “drill-down” point in a terminal session, so that clients can begin transactions *immediately* at the proper point in the session.

When Will I Need Logon Components?

Logon Components are useful in several types of situations:

- ◆ When you have a need for multiple tiers of pooling based on multiple security challenges within your system. (For example, users may need one set of logon credentials to get into the network, another to get into the mainframe, and another to get into database.) Serial log-in requirements may dictate the use of multiple logon components.
- ◆ When your service needs stateful “session-based” connections.
- ◆ When you need the performance advantages available through connection pooling.

If performance under load is not a high-priority issue and your connectivity needs are relatively uncomplicated, you may not need to use Logon Components at all. But there is no way to know if performance is adequate merely by testing services at design time, on a desktop machine.

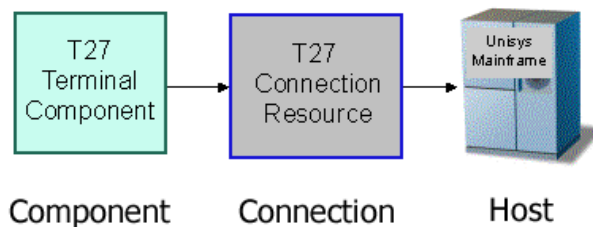
Components and services built with the T27 Component Editor may appear to execute quickly at design time (in Animation Mode, for example). But in real-world conditions—which is to say under load, with dozens or even hundreds of requests per second arriving at the server—session overhead can be a significant factor in overall transaction time. *The only way to know whether you need to use the special performance enhancement features described in this chapter is to do load testing on a server, under test conditions that mimic real-world “worst case” conditions.*

Connection Pool Architecture

When you install the Connect for T27, three types of Connection Resources are added to the Connection creation wizard:

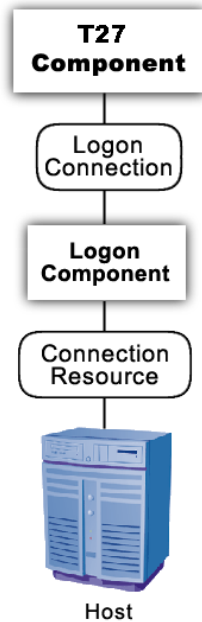
- ◆ T27 Connection
- ◆ a T27 MultiBridge Connection
- ◆ T27 Logon Connection (henceforth referred to as a Logon Connection)

The T27 MultiBridge Connection is a server version that minimizes the number of connections going back to the host and also contains added security. The T27 Connection is a true terminal *connection* and (when used by a T27 component) can establish a session with a host system. This is the connection-type that has been used throughout this Guide.



The T27 connection resource is designed to make an individual connection to the host on an as-needed basis. The connection is made just-in-time and discarded as soon as the client is done. It is not reused in any way.

The Logon Connection, on the other hand, is different. It defines a pool of User IDs and passwords, each of which can make its own connection. The Logon Connection also serves as an indirection layer to allow clients to connect to the host at exactly the point in the host program (exactly the screen) where the client needs to start. This entry-point-location behavior is made possible by the Logon *Component*. (A Logon Connection always uses a Logon Component to get to the actual connection.) The architecture is shown in the graphic below.



A *Connection Resource* is always required in order to get to the host. (This is true for any Integration Manager service that uses T27 components.) For simplicity, this diagram shows the *Connection Resource* going directly to the host; in the real world, there may be intervening delegation layers for security purposes.

The *Logon Component* contains Actions (an action model) designed to find a particular screen of interest in the host program. This drill-down location is the effective entry point of the transaction for any upstream process that uses this *Logon Component*. You can think of the *Logon Component* as a go-between between the *physical* connection (represented by the *Connection Resource*) and the logic layer (represented by the *T27 Component* itself).

In order for a *T27 Component* (at the top of the diagram) to use a *Logon Component*, it needs to enlist the aid of a *Logon Connection* resource. The *Logon Connection* is the bridge between the *T27 Component* and the *Logon Component*.

The kinds and responsibilities of the various objects discussed above are summarized in the following table.

Object	Role
T27 Connection Resource	Allows a connection to be established with a host system.
Logon Component	Specialized type of component in which the action model contains Logon, Keep Alive, and Logoff action blocks. This component can maintain a connection at a particular launch screen in a host program.
Logon Connection	Specialized type of <i>Connection Resource</i> that associates a pool of UserIDs and passwords with a given <i>Logon Component</i> type. At runtime, connections are established for client processes on demand (and reused), with one <i>Logon Component</i> instance per connection. Every connection in the pool provides ready access to a given point (a particular launch screen) in the host program, thanks to the associated <i>Logon Component</i> (see above).
T27 Terminal Component	Contains the action model that comprises the business logic for a particular T27 interaction (or transaction).

The Logon Connection's Role in Pooling

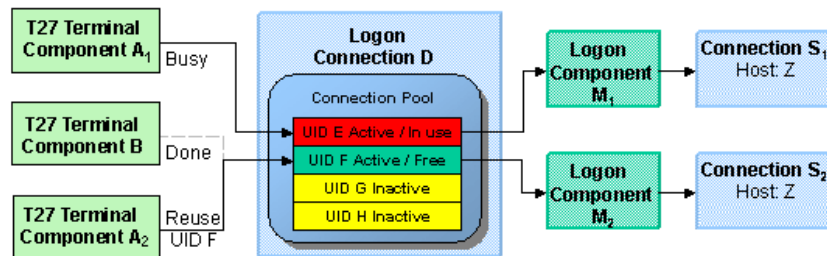
The Logon Connection differs from the ordinary “host-direct” connection resource in that it manages *pooling* (the sharing of connection instances and Logon Component instances at runtime).

In the context of a Integration Manager service, pooling not only allows reuse of (open) connections at runtime, it also increases the effective bandwidth of a deployed service. Consider the simple case where you’ve designed a T27 component that uses a regular connection resource. In creating the connection resource, you will have specified a UserID and password for the resource to use so that at runtime, the component can log in to the host. When an actual running instance of your component is using that connection, no other instance of the component can log in to the host using that same set of credentials. The bandwidth of your service is limited to one connected instance at a time.

With a Logon Connection, on the other hand, numerous host connections can be maintained in a “live” state so that multiple instances of your component can access the host (each on its own connection) without waiting. Throughput is dramatically increased.

The diagram below shows one possible runtime case where three component instances (two instance of T27 Terminal Component A and one instance of T27 Terminal Component B) are executing on the server. Instance 1 of Component A is using UserID ‘E’ to obtain a connection. This component has its own dedicated instances of Logon Component M and Connection S.

Terminal Component B has just finished executing and is relinquishing its connection (established through credentials defined by UID ‘F’). Note that because connection pooling is in effect, Component B’s downstream resources (its Logon Component instance, M2, and its Connection instance, S2) are not simply discarded; they remain live. As a result, Terminal Component A2 is able to obtain (reuse) the M2/S2 resource instances that were previously held by Terminal Component B.



In this diagram, Logon Connection D is associated with four connections based on four UIDs (user IDs or credentials: A-thru-F). One is in use; another (UID ‘F’) is alive but not being used; and two are inactive but available (i.e., valid UIDs have been assigned, so these two connections can be made live at any time).

How Many Pools Do I Need?

It’s possible for several different T27 components to draw from the same connection pool. It’s also possible for different components to draw from different pools. This means different Logon Connections.

An important factor in deciding how many Logon Connection resources (in effect, how many pools) your service needs is the number of different start screens (or entry point screens) needed by the various components in your project. Suppose Terminal Component A needs to begin its work at a particular starting screen in a host application, but you’ve also designed another component—Terminal Component B—that needs to start on a different screen. Components A and B will need separate Logon Connections, and the separate Logon Connections will point to separate Logon Components. (In any given connection pool, Integration Manager objects are shared in such a way that every user of the pool *must* start at the same screen.)

Pieces Required for Pooling

The combination of a Logon Connection, a Logon Component, and its Connection Resource form the basis of a connection pool. Starting from the host layer and working up the chain:

- ◆ The *Connection Resource* defines the most basic parameters necessary for establishing a connection with the Unisys host. When connection pooling is in effect, runtime instances of this object are kept alive and reused.
- ◆ The *Logon Component* defines the set of steps (actions) necessary to get to a particular entry point in the host program. (At runtime, an instance of this component will actually carry out those steps in order to arrive at, and maintain ready-to-use, a particular screen location in the host program.) When connection pooling is in effect, instances of this object are kept alive and reused.
- ◆ The *Logon Connection* is a special type of resource that contains all the information needed to define a connection *pool*. This resource is designed to encapsulate pool-management info and does not establish host connections directly; instead, it delegates those responsibilities to the Logon Connection (which delegates them, in turn, to the appropriate Connection Resource).

How Do I Implement Pooling?

To create the various pieces required for pooling, you'll go through the following basic steps (each of which will be discussed in greater detail in the sections to follow):

- 1** First, you'll create a basic T27 connection resource, as demonstrated in Chapter 2 of this Guide.
- 2** Next, you'll create a Logon Component that uses the connection resource defined in Step 1. As part of this process, you'll create an action model designed to navigate to a certain point in the host program.
- 3** You will create a Logon Connection resource, which is a specialized type of connection resource that relies on a Logon Component (from Step 2) to make the basic connection (through the resource defined in Step 1).
- 4** Finally, you'll create a T27 Terminal Component and associate it with the Logon Connection resource of Step 3.

These steps are described in detail starting with the discussion in [“Creating a Connection Pool” on page 69](#). Before going to that section, however, you should become familiar with the design principles behind the Logon Component (and also the Logon Connection). We'll start with the Logon Component, since it's impossible to create a Logon Connection without using a Logon Component.

The T27 Logon Component

The Logon Component is a special type of component: It has an Action Model, yet can be used as a connection resource as well. The Action Model of this type of component is designed to manage a connection that will be used by multiple T27 Terminal Components. In most respects, the Logon Component is the same as a T27 Terminal component. The differences are:

- 1** In a Logon Component, the Action Model is organized around connection-management tasks. Those tasks are implemented via special actions: the Logon Action, KeepAlive Action, and Logoff Action.
- 2** A Logon Component is not invoked directly by another component or service. Its invocation is under the control of a Logon Connection.

NOTE: A Logon Component must and can only be used in conjunction with a Logon Connection.

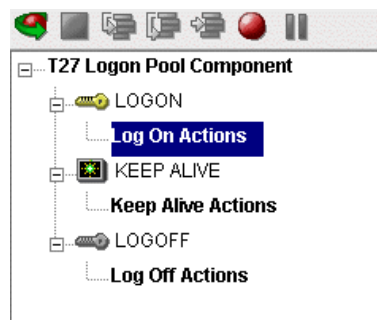
Instead of calling the Logon Component directly, using (for example) a Component Action, you will associate the Logon Component with a special connection resource called a Logon Connection. When your T27 Terminal Component executes, it executes via the Logon Connection, which in turn executes the Logon Component.

Logon, Keep Alive, and Logoff Actions

The Logon Component provides several screen-management capabilities that are important factors in overall performance. These capabilities are implemented in terms of Logon, Keep Alive, and Logoff actions:

- ◆ **Logon Actions**—These actions navigate through the host environment and park at a desired **launch screen** in the host system. The connection is activated using UserIDs from the pool. The T27 Terminal components that subsequently reuse the connection have the performance benefit of already being at the launch screen and won't incur the overhead of navigating to the launch screen as if they had come in under their own new session.
- ◆ **Keep Alive Actions**—These actions do two important tasks. First, they prevent the host from dropping a connection if it is not used within a standard timeout period defined by the host. Second, these actions must insure that the connection is always positioned at the “launch screen in the host, even after performing the Keep Alive actions needed to prevent the connection from dropping (the first important task).
- ◆ **Logoff Actions**—These actions exit the host environment in a manner you prescribe for all the connections made by User IDs from the pool, when a connection is being terminated.

These actions and their meanings will be discussed in greater detail below. For now, it's enough to know that these three action groupings are created for you automatically when you first create a Logon Component. Note the (empty) Logon, Keep Alive, and Logoff action blocks in the action model shown below:



LOGON Actions

Actions you place in the LOGON group are primarily concerned with signing into the host security screen and then navigating through the host menu system to a launch screen where each T27 component's Action Model will start. It is important that any T27 component using a Logon component be able to start execution at the same common screen. Otherwise, the performance gains of avoiding navigation overhead won't be realized and more importantly, the odd T27 component won't work.

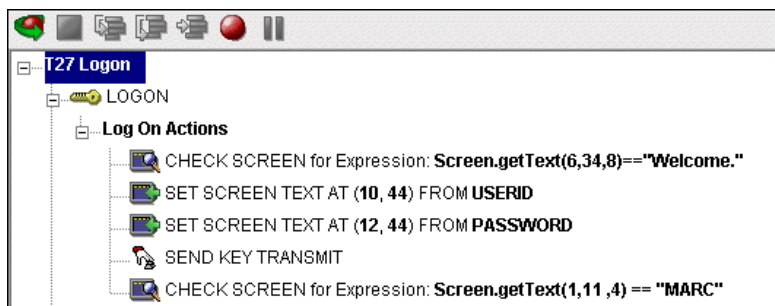
You can create actions under the Logon Actions block the same way as you would in an ordinary T27 Terminal Component—namely by using the Record feature to create (in real time) whatever actions are necessary in order to enter sign-on info such as User ID and Password (as well as your initial menu choices to arrive at the launch screen).

NOTE: Remember to use the User IDs and Passwords from the Logon Connection Pool. (See the discussion in [“Creating a Logon Connection using a Pool Connection” on page 72.](#)) To do this, you need to map the two special system variables called USERID and PASSWORD to the appropriate fields on the screen. By specifying these two variables, you make it possible for Integration Manager to automatically locate and use values from the next active and free Pool slot.

The launch screen is a common point of execution for all the T27 Terminal Components that use the User ID pool provided by a Logon Connection. The Logon actions in a Logon Component (which are executed only once when a new connection is established) let the calling component—your T27 Terminal Component—begin execution at a given screen in the host program.

Maximizing Performance with the Logon Component

The Logon Actions must be structured properly and therefore always begin and end with a Check Screen Action as shown in the screen below.



The final Check Screen action in the Logon block guarantees that control is not turned over to the T27 Component before the screen of interest has arrived in the connection. Without this, the T27 Component could start at an invalid screen, throw an exception, and possibly corrupt a transaction.

NOTE: You may notice when animating a Logon Component that the ending Check Screen is skipped. This is normal design-time behavior. In a production environment, the actions in a Logon Component always execute in an interleaved manner with a T27 Terminal Component. Animating a Logon Component from start to finish actually creates an abnormal sequence of events that would result in two Check Screens being processed in succession, which is not allowed.

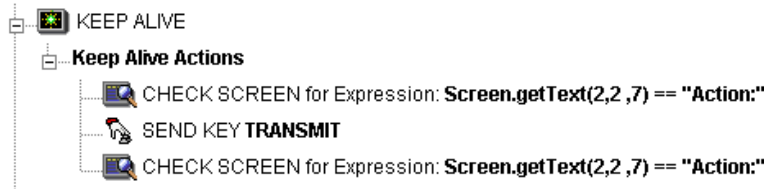
The performance benefit comes into play as a result not only of connection reuse but launch-screen reuse. For example, if a User ID pool of three entries is fully used and (ultimately) reused by the execution of a component fifteen times, the overhead of navigating to a menu item that executes the transaction of interest will occur only three times. Likewise, there will only be three logons to the host because the Logon actions at the top of a Logon Component are executed only once—when a new connection is activated (not when it is reused). This is key to obtaining maximum performance in a high-transaction-volume production settings.

NOTE: When possible, use the Try/On Error action to trap potential logon errors that may be recoverable. Otherwise, the UserID trying to establish the failed logon will be discarded from the pool, decreasing the potential pool size. The pool size will remain smaller until you manually reset the discarded connections using the Integration Manager Enterprise Server Console for T27. See [“Managing Pools” on page 79](#) for more details.

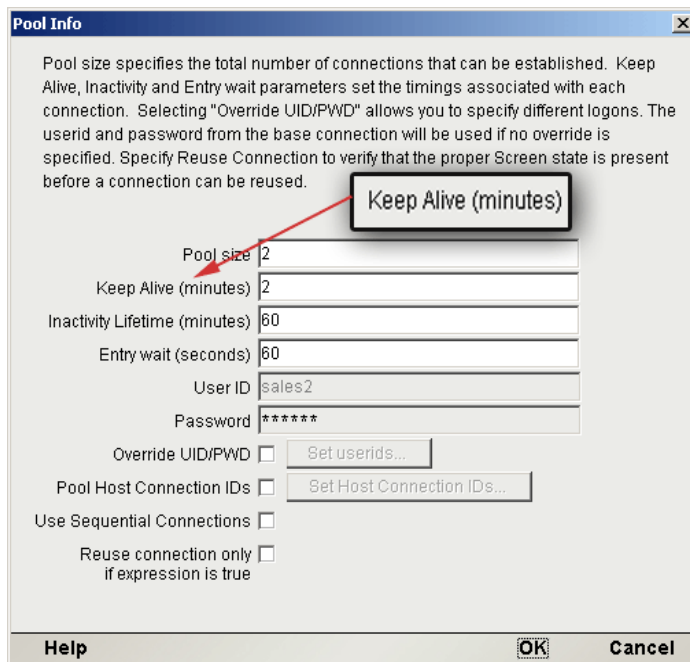
Keep Alive Actions

The KEEP ALIVE block is where you will place actions that “ping the host” in whatever way necessary to keep the connection alive so that it can be reused.

Keep Alive actions usually involve sending an Attention key, such as <Transmit>, to the host at some specified interval. However, if after sending the Attention key the screen changes to some screen that is different than the launch screen, you must be sure to return the Logon Component to the launch screen in the Keep Alive section. Failure to do so will leave the next component at an incorrect screen, causing it to fail.



The Pool Info dialog of the Logon Connection setup dialog (see “[Creating a Logon Connection using a Pool Connection](#)” on page 72) is where you control how often the Keep Alive actions will execute. If you specify in your Logon Connection pool that you would like to keep a free connection active for three minutes, but the host will normally drop a connection after two minutes of inactivity, you can specify keyboard actions to take place at 30-second intervals to let the host know the connection is still active.



Keep Alive actions will be executed multiple times, at intervals defined by the Keep Alive parameter defined on the Pool Info dialog of the Logon Connection.

The Inactivity Lifetime parameter (just below Keep Alive on the Pool Info dialog) tells Integration Manager how long it should wait, in the event the connection is not actually used by a T27 Terminal Component, before relinquishing the connection.

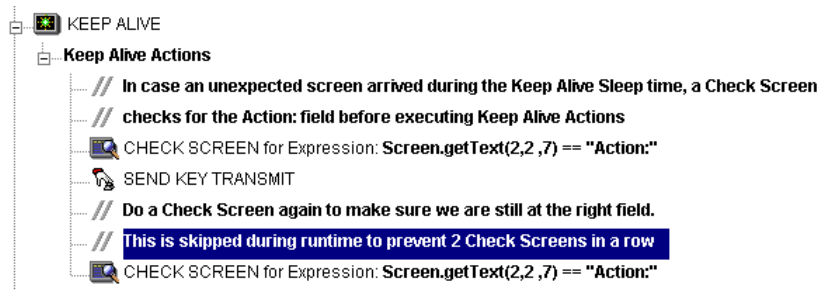
NOTE: The execution of the *Keep Alive actions* of a Logon Component will not cause the Inactivity Lifetime clock to reset in the Logon Connection. Only a T27 Terminal component’s execution will reset the Inactivity Lifetime. In other words, if a live connection is never actually used (but is merely kept alive by “Keep Alive” actions), then it will time out according to the Inactivity Lifetime value in the Pool Info dialog. But if the connection is used (by a T27 component) before it times out, the timer is reset at that point.

The last action inside a Keep Alive block should be an empty but “enabled” navigation action. If a user disables this last action, animation will not work properly due to two consecutive empty navigation actions occurring. For example, if an action in Logon and the first action in Keep Alive are disabled, an error occurs.

Maximizing Performance with Keep Alive Actions

Check Screen actions must occur at the beginning and end of the Keep Alive section.

Not only must the Keep Alive section prevent the connection from closing, but it must make sure that the proper launch screen is present when the execution is completed. Therefore, the first Check Screen checks to make sure that during the time the connection was available but not in use, an unexpected screen didn’t arrive from the host. The ending Check Screen prevents the premature release of the connection to the next T27 Component. See below for a typical Keep Alive block.



Logoff Actions

Logoff actions essentially navigate the User ID properly out of the host system after a timeout.

Logoff actions execute once for a given connection, and *only* when a connection times out (i.e. the Inactivity Lifetime expires) or the connection is closed via the T27 Server console.

In a “best practices” sense, it’s vitally important to make Logoff Actions bulletproof. If an exception occurs during execution of the Logoff actions, Integration Manager will break its connection with the host, freeing the UserID in the pool. *But the UserID may still be active on the host.* Until the host kills the UserID (from inactivity), a subsequent attempt by the pool to log on with that UserID may fail, unless you’ve coded your logon to handle the situation. Logon failures cause the UserID to be discarded from the pool, reducing the potential pool size and performance overall. As with Logon and Keep Alive actions, the way to guarantee you are on the proper screen at the end of the logoff is to end with a Check Screen.

Logon Component Life Cycle

Each time a User ID is activated from the Logon Connection Pool, an instance of the corresponding Logon Component is created and associated with that User ID. Then the Logon actions are executed until the desired launch screen is reached. At this point the T27 Terminal component execution begins. When it is finished another T27 Terminal component using the same Logon Connection may begin executing, starting at the same launch screen.

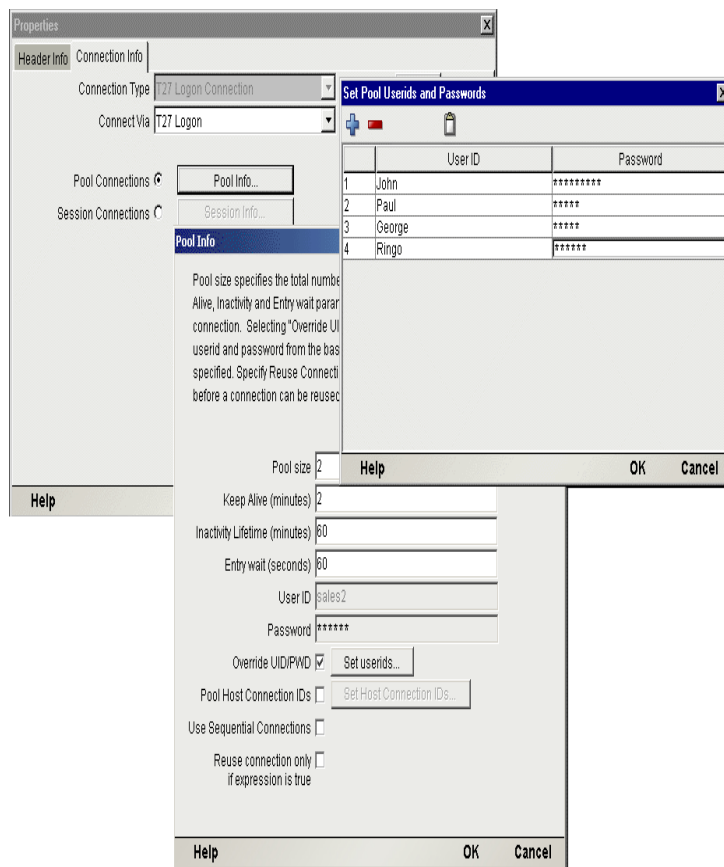
If no other component requests the connection, then the connection-instance in question enters an active but free state (an “idle state”) defined by the Inactivity Lifetime and KeepAlive settings on the Pool Info dialog of the Logon Connection. If the Keep Alive period (e.g., 2 minutes) is shorter than the Inactivity Lifetime (e.g., 120 minutes), then at appropriate (2-minute) intervals, the Keep Alive actions will be executed, preventing a host timeout and dropped connection; and the Keep Alive Period restarts.

A Logon Component's execution lifetime is dependent on the activity of the Logon Connection that uses it. As long as one entry in the Logon Connection pool is active, then one instance of the Logon Component will be in memory in a live state. A Logon Component instance will go out of scope (cease executing) when the last remaining pool entry expires due to inactivity. The only other way to stop execution of a Logon Component is through the T27 Console on the Server.

About the T27 Logon Connection

The Logon Connection is not a true connection object like a T27 Connection Resource, but a pointer to a Logon Component (which in turn connects to a host either through a conventional Connection Resource or yet more intervening Logon Connection/Logon Component pairs). The Logon Connection encapsulates information needed to describe a *pool of connections*. That includes User IDs and passwords, plus pool settings involving the time interval between retries on discarded connections, etc. Another function of the Logon Connection is that it ensures the use of different instances of the same Logon Component for all the User IDs for which connections are made.

The dialogs you'll use in setting up a pool of User IDs for a Logon Connection are shown in the following set of illustrations. Arrows denote the buttons that lead to continuation dialogs.



Every Logon Connection is associated with a given Logon Component. In addition, the Logon Connection provides the following User ID pool functionality:

- 1 It allows the specification of multiple User IDs in advance ensuring that clients are able to secure a connection when one is needed
- 2 It allows the reuse of a User ID/connection once it is established to eliminate repeated user authentications and disconnects

- 3 It allows a single User ID to use multiple connections if this is supported by the host system
- 4 It keeps a connection active to prevent host timeouts during inactive periods
- 5 It lets you specify when to remove a connection from the active pool
- 6 It sets a timeout period to use for a fully active pool to provide a free connection
- 7 It lets you specify error handling dependent on the state of the Logon Component used by the Logon Connection

Many-to-One Mapping of Components to Logons

In order for multiple instances of a T27 Terminal component or different T27 Terminal components to use a the same Logon Connection, the following conditions must be met:

- 1 All the T27 Terminal components must use the same Connection Resource (thereby sharing the Unisys Host, Port and data encoding parameters)
- 2 All the T27 Terminal components must have a common launch screen in the host system from which they can begin execution (see “[Creating a Logon Component](#)” on page 70 for more detail).

Connection Pooling with a Single Sign-On

If your host system security supports multiple logins from a single user ID, you may have circumstances where you wish to pool the single User ID. This can be accomplished by performing the following steps:

- ◆ Specify a User ID/Password in the Connection Resource used by the Logon Component.
- ◆ On the Pool Info dialog of the Logon Connection, specify a Pool Size greater than 1.
- ◆ Do NOT check the **Override the UID/PWD** setting in the Pool Info dialog of the logon Connection.

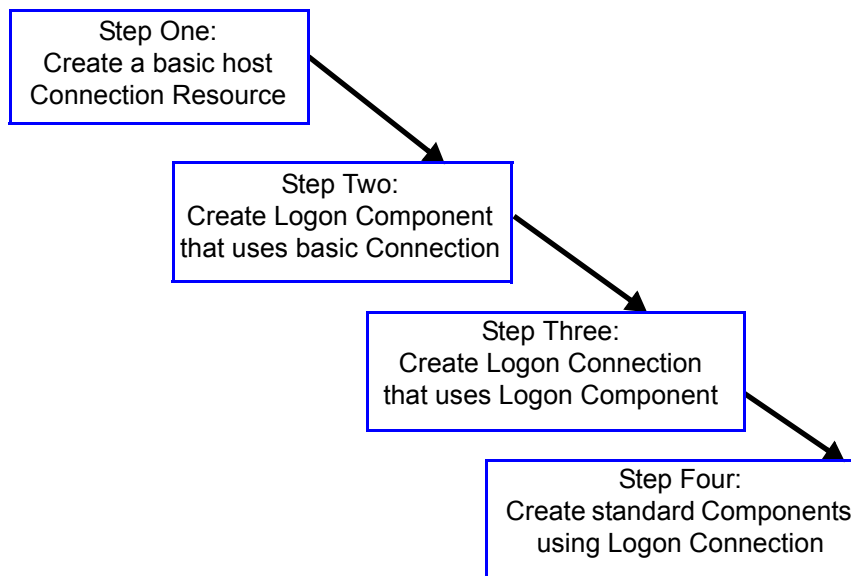
These steps will cause each pool slot to use the User ID and Password contained in the Connection object and not use the user IDs from the pool.

Creating a Connection Pool

Overview

When creating a T27 Terminal component, you normally first create the Connection object it needs first. Similarly, when creating the objects comprising a Connection Pool, you must create certain objects first, starting (in essence) at the host and working your way backwards to the T27 Terminal Component that will access the host.

A typical sequence of steps for creating a Connection Pool is:



Creating a Basic T27 Connection

This step is simple. Create a new Connection Resource as described in [“To create a T27 Connection Resource:” on page 16](#). Even though you will be using User IDs and Passwords defined in the Logon Connection later, you should still define one in the Connection as well. This will be needed when you define the Logon Component in the next step. Alternatively, you can simply use an existing Connection Resource.

Creating a Logon Component

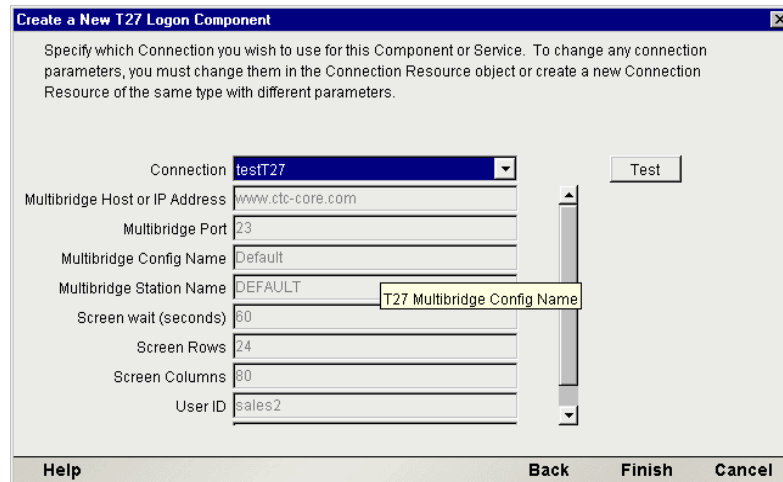
➤ To create a T27 Logon Component:

- 1 From the Integration Manager **File** menu, select **New>xObject**, then open the **Component** tab and select **T27 Logon**.

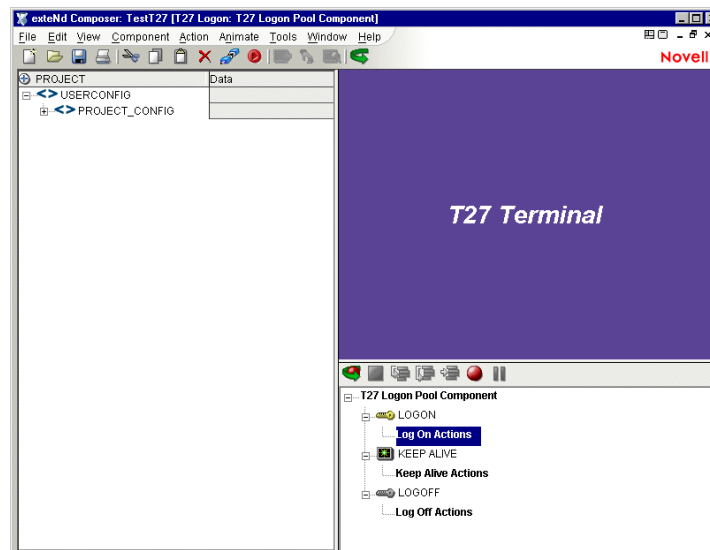
The Header Info panel of the New xObject Wizard appears.

- 2 Type a **Name** for the connection object.

- 3 Optionally, type **Description** text.
- 4 Click **Next** and the Connection Info panel appears.



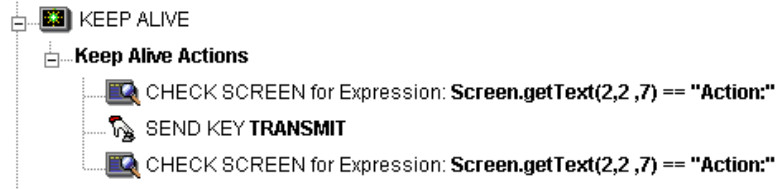
- 5 Select a **Connection** from the drop down list (this will be the standard connection, not the logon connection at this point).
- 6 Click **Finish** and the Logon Component Editor appears.



NOTE: Recording actions follows a series of steps. The cursor must be positioned over LOGON; turn Record on, and when you are done, turn Record off. Position the cursor to Keep Alive, turn Record on, and when you are done, turn Record off. Position the cursor to Logoff, turn Record on, then when you are done, turn Record off.

- 7 Record Logon Actions for logging into the host and navigating to the launch screen using the same Recording techniques described in Chapter 5 of this Guide.
- 8 Edit the Logon Map actions that enter a User ID and Password to instead use the special USERID and PASSWORD variables described in the section titled "T27 Specific Expression Builder Extensions" in Chapter 4 of this Guide.

- 9 Create the needed Check Screen and Send Key actions in the KEEPALIVE section of the Action Model (a quick way to do this is to copy an existing action, highlight the appropriate action, paste, and then modify if necessary).

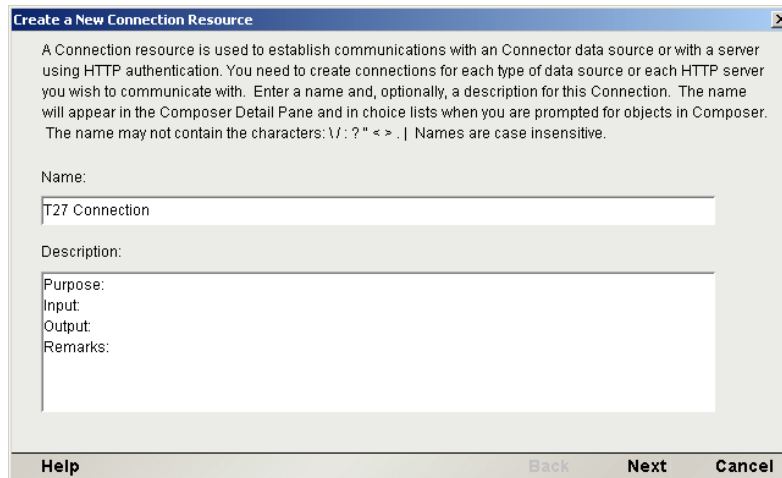


- 10 Record LOGOFF actions for properly exiting the host
- 11 Save and close the logon Component.

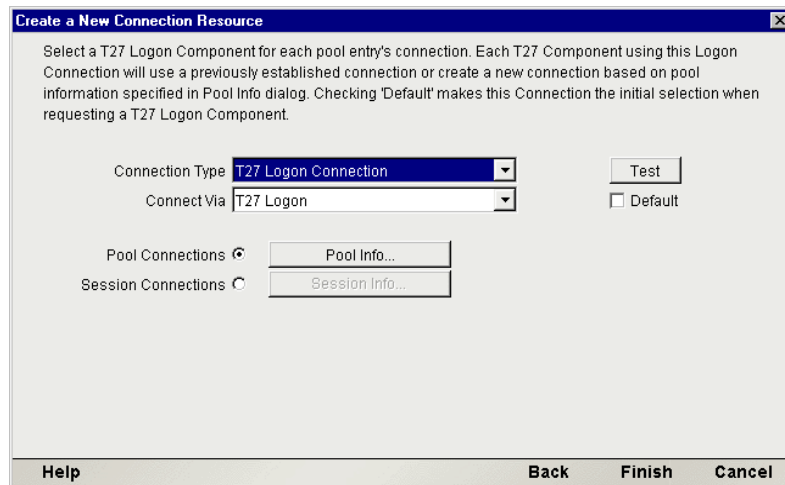
Creating a Logon Connection using a Pool Connection

➤ To create a T27 Logon Connection:

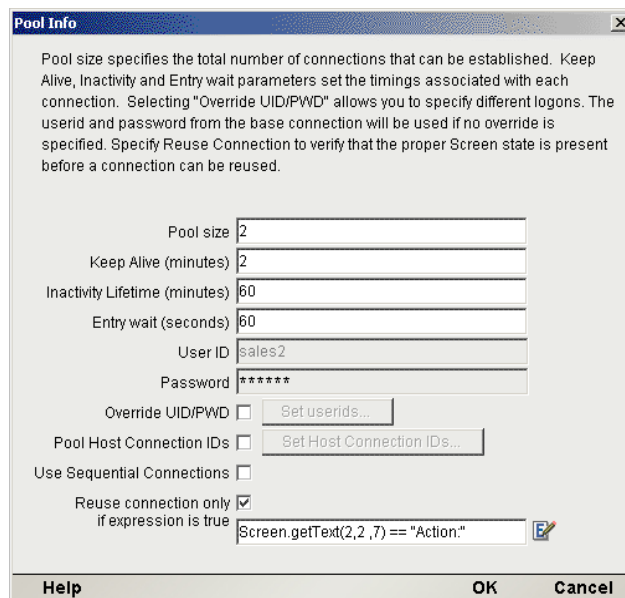
- 1 From the Integration Manager File menu, select **New>xObject**, then open the **Resource** tab and select **Connection**, or you can click on the icon. The Header Info panel of the New xObject Wizard appears.



- 2 Type a **Name** for the connection object.
- 3 Optionally, type **Description** text.
- 4 Click **Next** and the **Connection Info** panel appears.

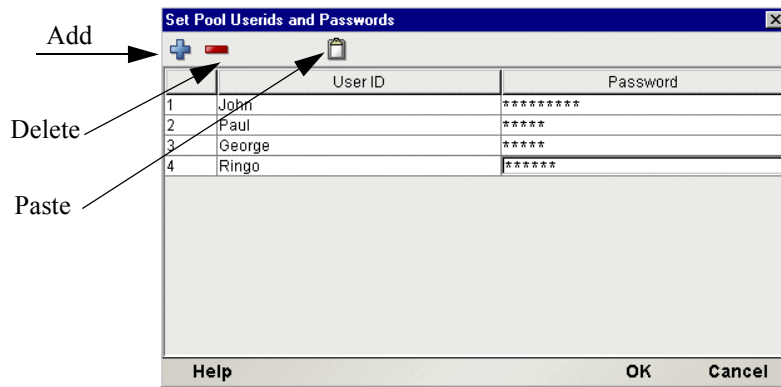


- 5 For the **Connection Type** select "T27 Logon Connection" from the drop down list.
- 6 In the **Logon Via** control, select the Logon Component you just created.
- 7 Click on the **Pool Info** button and the Pool Info dialog appears.



- 8 Enter a **Pool Size** number. This represents the total number of connections you wish to make available in this pool. For each connection, you will be expected to supply a UserID/Password combination later.
- 9 Enter a **KeepAlive** time period. This number represents (in minutes) how often you wish to execute the Keep Alive actions in the associated Logon Component whenever the connection is active but free (i.e. not being used by a T27 component). The number you enter here should be less than the Screen Wait Timeout period defined on the host for an inactive connection.
- 10 Enter an **Inactivity Lifetime**. This number represents (in minutes) how long you wish to keep an active free connection available before closing out the connection and returning it to the inactive portion of the connection pool. Remember, that once the connection is returned to its inactive state in the pool, it will incur the overhead of logging in and navigating host screens when it is re-activated.
- 11 Enter an **Entry Wait** time in seconds. This time represents how long a T27 component will wait for a free connection when all the pool entries are active and in use. If this time period is reached, an Exception will be thrown to the Application Server.

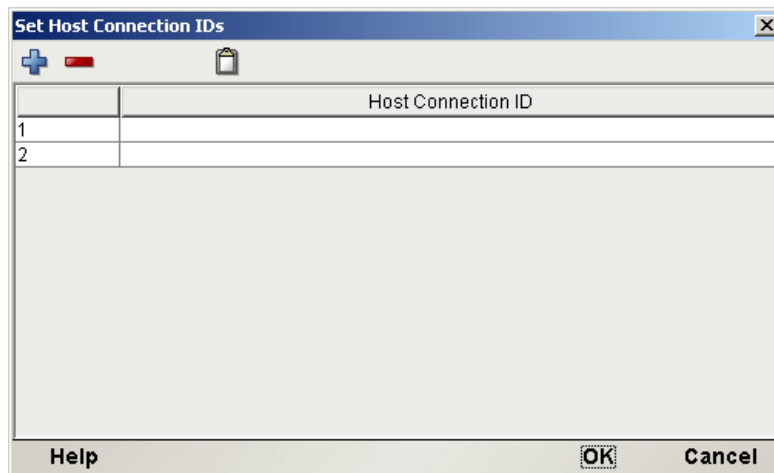
- 12** Checking **Override UID/PWD** means you wish to specify User ID/Password combinations for use in the connection pool. When checked, this activates the Set Userids button. Click on the button to display the Set USERIDS and PASSWORDS dialog.



On the Toolbar there are three icons: Add which adds an empty row, Delete, which deletes a highlighted row and Paste which allows you to copy/paste information from a spreadsheet into the table. For more on this, see the following Note.

NOTE: Alternate and faster ways to enter data are to copy data from a spread sheet and paste it into the table. Make sure your selection contains two columns. The first column must contain UserID; the second Password. Open the spreadsheet, copy the two columns and as many rows as needed. Open the table and immediately press the Paste icon located on the toolbar. You can also copy data from tables in a Microsoft Word® document using the same technique.

- 13** Enter as many **USERID/PASSWORD** combinations until you reach the size of the pool you specified and click **OK**. Pool size will be adjusted depending upon how many rows you entered.
- 14** Click **OK** to dismiss the “Set User IDs and Passwords” dialog and return to the Pool Info dialog.
- 15** Optionally click the **Pool Host Connection IDs** checkbox in the Pool Info dialog if you intend to manage terminals by identifier strings. When checked, this activates the Set Host Connection IDs button. Click on the button to display the dialog.



On the Toolbar there are three icons: Add which adds an empty row, Delete, which deletes a highlighted row and Paste which allows you to copy/paste information from a spreadsheet into the table.

- 16** Enter as many Terminal IDs as needed in the dialog and click **OK** when complete.
- 17** Optionally click the **Use Sequential Connections** checkbox if you want Integration Manager to establish connections in the same order that User IDs were listed in the “Set User IDs and Passwords” dialog. Connections will be made in numerical sequence.

18 Optionally check the **Reuse connection only if expression is true** control. This control allows you to enter an ECMAScript expression that evaluates to true or false based on some test of the launch screen. The purpose of the expression is to check to make sure the launch screen is the proper one each time a new T27 Component is about to reuse an active free connection. Under circumstances unrelated to your Integration Manager service, it's possible that the launch screen will be replaced by the host with a different screen. For instance, if there is a system ABEND on the host, the launch screen in the Logon Component may be replaced by a System Message screen.

NOTE: For instructions on how to create this expression, see the discussion on [“Handling Errors and Messages” on page 56](#). Also refer to [“Maximizing Performance of T27 Logon Connection” on page 75](#).

The following is a sample Custom Script used to see if a particular screen is present. If it is not, the script writes a message to the console stating that the screen is bad and the logon connection is being released. This function is called from the “Reuse connect only if expression is true” control on the Pool Info dialog.

```
function checkValidLaunchScreen(ScreenDoc)
{
    var screenText = ScreenDoc.XPath("SCREEN").item(0).text
    if((screenText.indexOf("MENU") != -1 || screenText.indexOf("APLS") != -1) &&
        (screenText.indexOf("COMMAND UNRECOGNIZED") == -1 ||
         screenText.indexOf("UNSUPPORTED FUNCTION") == -1))
    {
        return true;
    }
    else
    {
        java.lang.System.out.println("Warning - Releasing logon connection at bad screen");
        java.lang.System.err.println("Warning - Releasing logon connection at bad screen");
        return false;
    }
}
```

19 Click **OK** to return to the Connection Info panel.

20 Click on **Finish** and the Logon Connection is saved.

Maximizing Performance of T27 Logon Connection

To prevent T27 Components from beginning execution on a connection that may have been left on an invalid screen by a previous T27 component, the Logon Connection Resource allows the connection itself to check for the presence of the launch screen. This is accomplished by using the option titled “Reuse connection only if expression is true” on the Pool Info dialog of the Logon Connection. The screen test you specify here is executed each time a T27 Component completes execution. If the test fails, Integration Manager will immediately disconnect from the host, possibly leaving a dangling UserID on the host. As noted before, the host will eventually kill the user, but the UserID may be discarded from the pool if it is accessed again before being killed, thereby reducing the pool size and consequently overall performance.

Another reason to use the “Reuse connection only if true” option is that you can perform very detailed tests against the screen to make sure it is your launch screen. While Map Screen actions do perform a screen check, they only look at the number of fields in the terminal data stream. In most cases, this is sufficient. However, it is possible two different screens can have the same number of fields in which case the expression based test that examines the content of the screen will produce more rigorous results. A best practices approach mandates that you use this feature all the time.

Static versus Dynamically Created Documents/Elements

In some Integration Manager applications, users have a need to place various control, auditing, and/or meta-data in an XML document. This document may or may not be in addition to the actual elements/documents being processed (i.e. created from an information source). If this document structure and data is dynamically created by multiple Map actions (i.e. over 100) performance of the component and therefore the entire service may suffer. To boost performance, create the portion of the document structure without the dynamic content ahead of time, then load it into the Service at runtime via an XML Interchange action and retain the Map actions for dynamic content. This can boost performance as much as 30% in some cases.

Creating a Logon Connection using a Session Connection

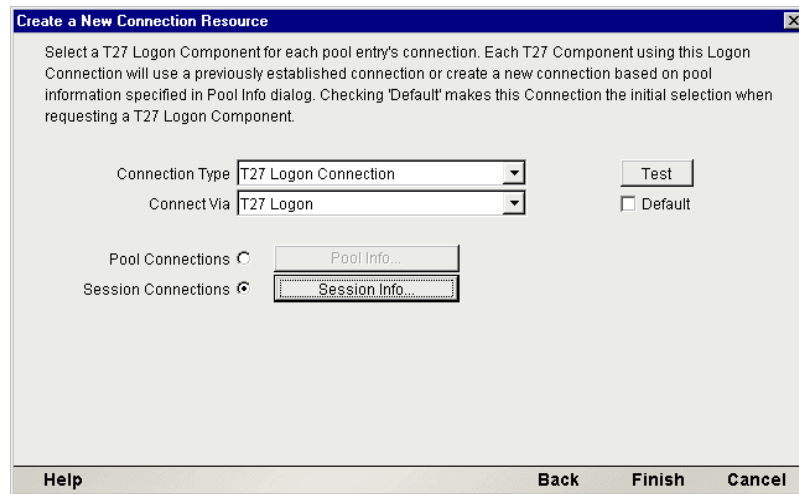
Sometimes, you may want the extra level of control over session parameters that a Logon Connection affords, without necessarily wanting to use pooling. In this case, you can follow the procedure outlined below.

➤ **To create a T27 Logon Connection:**

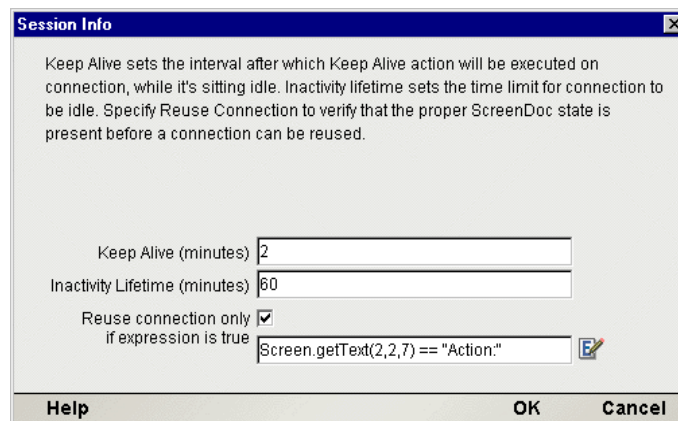
- 1 From the Integration Manager **File** menu, select **New>xObject**, then open the **Resource** tab and select **Connection**, or you can click on the icon. The Header Info panel of the New xObject Wizard

appears.

- 2 Type a **Name** for the connection object.
- 3 Optionally, type **Description** text.
- 4 Click **Next** and the **Connection Info** panel appears.



- 5 For the Connection Type select “T27 Logon Connection” from the drop down list.
- 6 In the **Connect Via** control, select the Logon Component you just created.
- 7 Click the **Session Connections** radio button and then on Session Info button.



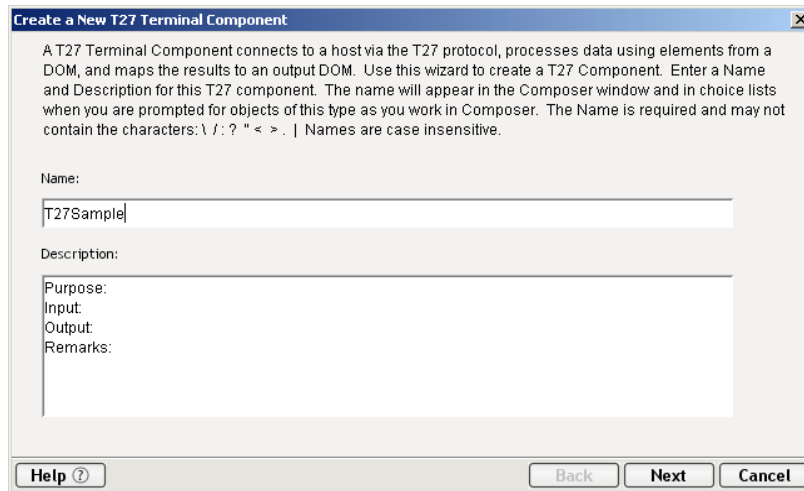
- 8 The Keep Alive (minutes) number represents (in minutes) how often you wish to execute the Keep Alive actions in the associated Logon Component whenever the connection is active but free (i.e. not being used by a T27 Terminal component). The number you enter here should be less than the Timeout period defined on the host for an inactive connection.
- 9 The Inactivity Lifetime (minutes) number represents (in minutes) how long you wish to keep an active free connection available before closing out the connection and returning it to the inactive portion of the connection pool. Remember, that once the connection is returned to its inactive state in the pool, it will incur the overhead of logging in and navigating host screens when it is re-activated.
- 10 Click in the checkmark box if you want to Reuse connection only if expression is true. If you choose to do so, the expression field automatically displays and you can click on the expression icon to display the if the expression is true dialog.

Creating a T27 Component That Uses Pooled Connections

At this point, you are ready to create a T27 Component that can use the Connection Pool. For the most part, you will build the component as you would a normal T27 component, the only difference being the Connection you specify on the connection panel of the New Component Wizard. (You'll specify a Logon Connection instead of a regular T27 Connection.)

➤ **To create a T27 Component:**

- 1 From the Integration Manager File menu, select **New>xObject**, then open the **Component** tab and select **T27**. The Header Info panel of the New xObject Wizard appears.



- 2 Type a **Name** for the component.
- 3 Optionally, type **Description** text.
- 4 Click **Next** and the XML Property Info panel appears.
- 5 Select the necessary **Input and Output Templates** for your component.
- 6 Click **Next** and the Connection Info panel appears.
- 7 Select the Logon Connection you created and click on **Next**. The Component editor appears.
- 8 Build the component as described in **“To create a new T27 Component:” on page 19**.

Maximizing Performance of T27 Terminal Components

Once the launch screen is obtained by the logon Component's logon actions, it is handed to the T27 Terminal Component that uses the connection. Then the T27 Terminal component (when finished executing) leaves the screen handler back at the launch screen. If the T27 Component finishes without being on the launch screen, (i.e. it releases the connection back to the pool with an invalid screen) then it is possible that all subsequent T27 Components that use the connection may throw exceptions rendering the connection useless. It also will degrade overall performance and possibly cause data integrity problems within the component processing.

Once again, to ensure that the launch screen is present, *the last action to execute in a T27 Component must be a Check Screen that checks for the launch screen*. This can be tricky if your component has many decision paths that may independently end component execution. You must be sure that each path ends with a Check Screen action.

Managing Pools

Using the Integration Manager Console

T27 Connection Pools can be managed through the T27 Console Screen.

➤ How to Access the Console

- 1 If you are using the Novell exteNd Application Server, log on to your Server via your web browser using **http://localhost/SilverMaster50** (or whatever is appropriate for the version in use). In this example, Novell exteNd Application Server 5.0 is used.

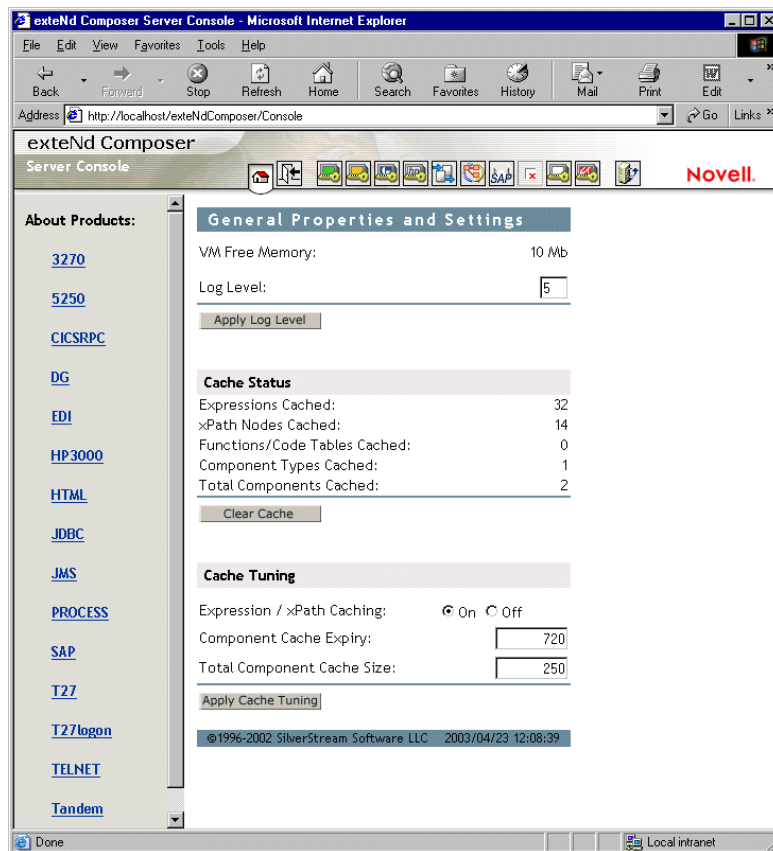
SilverMaster40

[exteNdComposer](#)
[filename](#)
[helloworld](#)
[robots.txt](#)
[SilverMaster40](#)
[SilverStream](#)
[XTutorial](#)

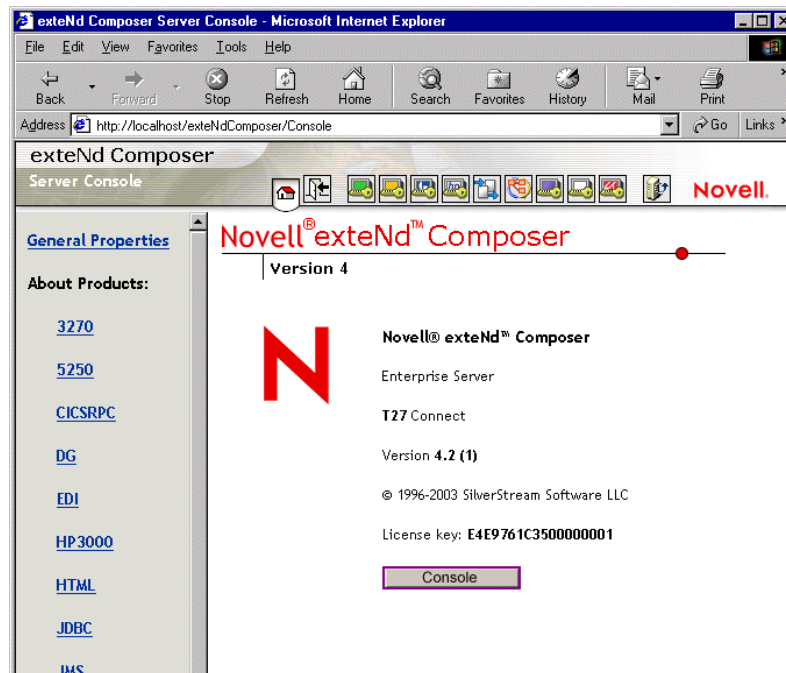
NOTE: If you are not using the exteNd Application Server, enter a URL of this form:

http://<hostname>:<port>/exteNdComposer/Console

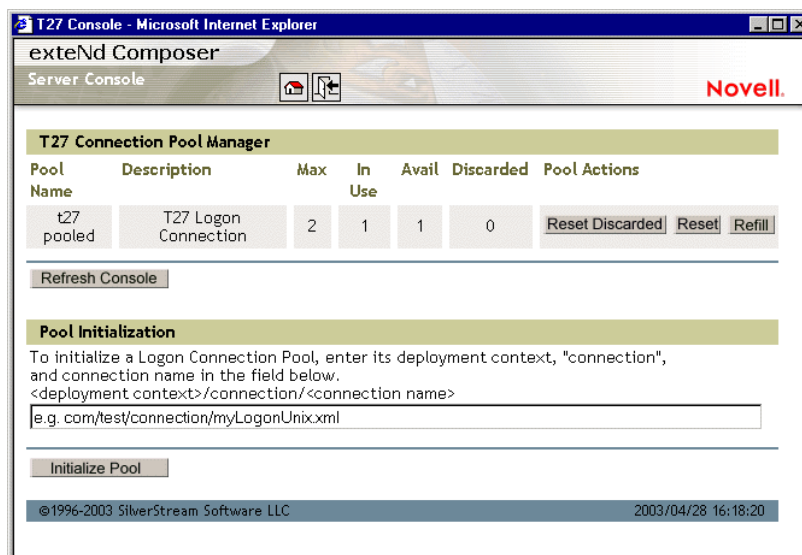
- 2 Click on the **exteNd Composer** link. You should see the main console page:



- Click on the T27 link in the left (nav) frame and the T27 Console General Properties Screen will come into view.



- Click the Console button. A browser popup window (the T27 Connection Pool Management Screen) should appear.



- To initialize a Logon Connection Pool, enter its deployment context, the word "connection", and the actual connection name in the text field near the bottom of the screen. (See illustration above.) Then click the **Initialize Pool** button.
NOTE: Refer to the appropriate Integration Manager Enterprise Server guide for more information.
- Optionally click the **Refresh Console** button to update the view.

Connection Pool Management and Deployed Services

The Connection Pool Management Screen displays the current state of the connection(s) with the T27 Connect. The screen contains a table listing the Pool Name, Description of the connection, the maximum number of connections in the pool, the number of connections in use, the number of connections available, the number of connections discarded. It also contains several buttons allowing you to perform various actions related to connection pooling, which are outlined in the table below.

Table 1-2:

Button Name	Action
Reset Discarded	Resets the Discarded connections which are then reflected in the table
Reset (Pool)	Resets the Available and Discarded connections which are then reflected in the table
Refill (Pool)	Refills the pool with the maximum number of connections
Additional Buttons on T27 Connection Pool Manager Console	
Refresh Console	Shows the current status of the connection pool
Initialize Pool	Initializes a Logon Connection Pool by entering a relative path to the deployed lib directory. This will not work unless the deployed jar is extracted. Click on the SUBMIT button when finished.

Connection Discard Behavior

The performance benefits of connection pooling are based on the ability of more than one user to access a resource, or set of resources, at once. The way a connection is established begins with the logon component picking the User ID and Password from the table. If the connection fails, then it is discarded for this User ID and Password and tries another until a connection is established. The failure of *one* connection doesn't necessarily prevent a successful connection from being established.

The Connect for T27 addresses the "one bad apple" problem by discarding any connection that can't be established (for whatever reason: bad user ID, timed-out password, etc.) and reusing the others. When a connection is determined to be unusable, the Connect for T27 will write a message to the system log that says: "Logon connection in pool <Pool name> was discarded for User ID <User ID>."

Screen Synchronization

Screen synchronization has special ramifications for users of pools. If a situation arises in which a user leaves a connection without the screen returning to its original state, the next user will begin a session with the screen in an unexpected state and an error will occur. To prevent this, there is a screen expression which the user can specify in the connection pool. It is important that the last action in a T27 Component be a Send Key action that will result in the session ending with the correct logon screen active.

NOTE: The last action should be an empty Check Screen action so that the T27 Terminal component waits until the launch screen arrives before giving up the connection. (This should happen automatically, when you create the Send Key action, but nevertheless, the last action should be the Check Screen.)

If you want to check, at runtime, for the presence of a bad screen at the end of a user session, include a Function Action at the end of your component's action model that executes a function similar to the one shown below:

```
if((Screen.getText(1,11,4) == "MARC" || Screen.getText(2,2,7) == "Action:"
) &&
    (Screen.getTextFromRectangle(1,1,24,80).indexOf("COMMAND
UNRECOGNIZED") == -1 ||
Screen.getTextFromRectangle(1,1,24,80).indexOf("UNSUPPORTED FUNCTION") ==
-1))
    {
        java.lang.System.out.println("OK to exit");
    }
// Otherwise, write error messages to Sys.out
else
    {
        java.lang.System.out.println("Warning - Releasing logon
connection at bad screen");
    }
```

In this particular example, this function checks the screen text for either the MARC header or the Action: field and also makes sure it doesn't see the words "COMMAND UNRECOGNIZED" or "UNSUPPORTED FUNCTION." If this is the case, it will write an error to the log.

A Glossary

ANSI

American National Standards Institute.

Check Screen

An action that signals the component that execution must not proceed until the screen is in a particular state, subject to a user-specified timeout value.

Connection Pooling

An arrangement whereby an intermediary process (whether the app server itself, or some memory-resident background process not associated with the server) maintains a set number of preestablished, pre-authenticated connections, and oversees the “sharing out” of these connections among client apps or end users.

Dumb Terminal

A computer terminal that has no onboard CPU, memory, or storage devices, beyond the minimum necessary to communicate with a more powerful host machine.

ECMAScript

Any JavaScript-like language that conforms to European Computer Manufacturers Association standard No. 262.

Native Environment Pane

A pane in the T27 Component Editor that provides an emulation of an actual T27 terminal session.

Screen Object

Represents the current T27 screen display

Send Key

An action that represents pressing a T27-specific attention or function key.

Set Screen Text

An action that appears in the Action Model whenever there is a map to the screen or keys entered on the screen.

T27

A terminal originally developed by the Burroughs Corporation, later purchased by Unisys. Used to interact with mainframe computers including the A Series, V Series and ClearPath™ NX.

Terminal Emulation

A program that allows a personal computer to act like a (particular brand of) terminal, e.g. a T27. The computer thus appears as a terminal to the mainframe (host) computer and accepts the same escape sequences and other attention keys for functions such as cursor positioning and clearing the screen.

Unisys

Designers, manufacturers and marketers of computer-based information systems and related products and services. The T27 mainframe terminal was originally developed by Burroughs Corporation, which became part of Unisys in 1986. Mainframe computer models, including the A Series, V Series, and ClearPath™ NX run T27 terminal emulation

B T27 Display Attributes

The `Screen.getAttribute()` method will return one of the values shown below, representing the current attribute state of the onscreen character at the given location. The attributes listed below are just the most common and any combination of what is stated below could, theoretically occur. Basically, underlined, bold, blinking and reverse characters return a standard integer. This is then added to the hexadecimal number indicating whether the field is secure, protected, selected and/or vertical.

Number	Attribute
0	standard (can type into - e.g., entry field)
16 (0X10)	secure (can type into - e.g., passwords)
32 (0X20)	protected (cannot type into)
33 (0X20)+1	protected and underlined
34 (0X20)+2	protected and bold
36 (0X20)+4	protected and blinking
40 (0X20)+8	protected and reverse
48 (0X10)+(0X20)	secure and protected
64 (0X40)	selected
80 (0X40) + (0X10)	selected and secure
96 (0X20)+(0X40)	selected and protected
98 (0X20)+(0X40)+2	selected, protected and bold
0X100	vertical

Viewing All Character Attributes at Once

Using the `Screen.getAttribute()` method, you can easily write a function that captures all attributes (at all screen locations) at once. The following ECMAScript function, for example, can be used at design time to display screen attributes in an alert dialog.

```
function showAttributes( myScreen )
{
    var attribs = new String(); // create empty string
    // Iterate over all rows and columns:
    for (var i = 1; i <= myScreen.getRows(); i++, attribs += "\n" )
        for (var k = 1; k <= myScreen.getCols(); k++)
            attribs += " " + myScreen.getAttribute(i,k);
}
// display the results:
```


C Reserved Words

The following terms are reserved words in Integration Manager for T27 Connect and should not be used as labels for any user-created variables, methods, or objects.

- USERID
- PASSWORD
- PROJECT
- Screen
- getAttribute
- getCols
- getCursorCol
- getCursorRow
- getNextMessage
- getPrompt
- getRows
- getStatusLine
- getText
- getTextFromRectangle
- hasMoreMessages
- putString
- putStringInField
- setMessageCaptureOff
- setMessageCaptureOn
- typeKeys

Index

A

Action

- Check Screen 27

Action Model

- example 55
- examples 45
- looping and repeating 45
- testing 50, 52

Action pane context menu 27

Actions

- Check Screen 43
- deleting 48
- Send Key 25
- Set Screen Text 25, 27, 42

Animation

- starting 52
- step into 52
- toggle breakpoint 47

Animation Tools 52

applications 13

Architecture 11

- connection pool 60

C

case-sensitivity 44

Check Screen Action 26, 43

- errors related to 56
- performance 78
- tips 56

Check Screen Actions 27

Component Editor Window 21

Components

- executing 51
- selecting a Connection 21
- steps in creating 15, 19
- testing 50
- tips for building 56

Connecting 25

- and disconnecting 26

Connection Button 25

Connection Discard Behavior 81

Connection Pool

- steps for creating 69

Connection Pool Architecture 60

Connection Pool Console, refreshing 81

Connection Pools

- implementing 63

- steps in creating 69

Connection Resource 60, 70

- creating 15
- steps in creating 15

ConnectionPools

- status 81

Connections

- logon 68
- maximum 81
- resetting discarded 81

constant-based parameters 17

context menu items 26

Control key down, dragging with 39

Create Check Screen Button 25

Creating a Connection Pool 69

Creating a Logon Connection 72

Creating a Logon Connection using a Pool Connection 72

Creating a Logon Connection using a Session Connection 76

D

deleting an action 48

Dragging and dropping to DOMs 42

E

ECMAScript 17, 58

Entry Wait, pools 73

errors 56

- connection 81

Executing a component 51

expression-based parameters 17

F

Floating Keypad 23

G

getTextFromRectangle() 40

H

Host Connection ID 17, 74

- I**
 - Inactivity Lifetime
 - pools 73
 - session connection 77
 - Initialize Pool 81
- K**
 - Keep Alive 77
 - session connection 77
 - KEEPALIVE 66
 - KeepAlive
 - pools 73
 - KEEPALIVE Actions
 - recording 71
 - KeepAlive Actions 63
 - Keyboard 22
 - keypad 22
- L**
 - launch screen 64
 - Logoff action 64
 - LOGOFF Actions
 - recording 71
 - Logon action 64
 - LOGON Actions
 - recording 71
 - Logon Actions 64
 - Logon Component
 - definition 63
 - Logon Components
 - creating 70
 - Logon Connections 16, 60
 - session connections 76
 - Looping in an Action Model 45
- M**
 - Managing Pools 79
 - Maximizing Performance with KEEP ALIVE Actions 67
 - Maximizing Performance with the Logon Component 65
 - MultiBridge Connection 16
- N**
 - Native Environment Pane 21
 - newlines, in rectangular screen selections 40
- O**
 - Override the UID/PWD 69
- P**
 - parameters, constant vs expression-based 17
 - Password 17
 - Set Screen Text automatically 26
 - Performance 58, 59, 78
 - logon connection and pools 75
 - Pool Info dialog 73
 - Pool Size 73
 - pools 73
 - checking status 81
 - implementing 63
 - initializing 81
 - managing 79
 - maximum connections 81
 - refilling 81
 - resetting 81
- R**
 - readiness criteria and the Check Screen Action 44
 - Record Button 24
 - Recording 24, 41
 - adding to a previous recording 46
 - and animating 52
 - editing after recording 45
 - start/stop 25
 - turning off 45
 - rectangular onscreen selections 39
 - Redundant Data, dealing with 53
 - Refill Pool 81
 - Refresh Console 81
 - Reset Discarded 81
 - Reset Pool 81
 - row/column placement 43
- S**
 - Screen Object, definition of 23
 - Screen Synchronization 81
 - Screen Wait time 17, 43, 56
 - screen, T27 terminal 23
 - Send Key Action
 - tips 56
 - Send Key Button 25
 - Session Connections 76
 - Set Screen Text 26
 - Set Screen Text Action 26, 27, 42
 - errors related to 57
 - tips 56
 - Set Screen Text Button 25
 - shift-drag selection technique 39
 - Single Sign-On and connection pools 69
 - Start Animation 52
 - Static versus Dynamically Created Documents/Elements 76
 - status line, in Native Environment Pane 37
 - status line, marking row/column placement 43
 - Step Into 52

T

- T27 Connection types 60
- T27 terminal screen 23
- T27, definition of 12
- Temp XML Document 20
- Terminal Keypad 23
- Toggle Breakpoint 47
- toolbar
 - connection 25
 - Create Check Screen Button
 - Actions
 - Create Check Screen 25
 - record 24
 - Send Key button 25
 - Set Screen Text 25

toolbar buttons 24

U

- Unisys mainframes 12
- Userid
 - Set Screen Text automatically 26
- USERID/PASSWORD 74
- Userids 17

V

- variables, Userid and Password 17

