

Novell Identity Manager

3.5

March, 2007

IDENTITY MANAGER USER
APPLICATION: MIGRATION GUIDE

www.novell.com



Novell®

Legal Notices

Novell, Inc. makes no representations or warranties with respect to the contents or use of this documentation, and specifically disclaims any express or implied warranties of merchantability or fitness for any particular purpose. Further, Novell, Inc. reserves the right to revise this publication and to make changes to its content, at any time, without obligation to notify any person or entity of such revisions or changes.

Further, Novell, Inc. makes no representations or warranties with respect to any software, and specifically disclaims any express or implied warranties of merchantability or fitness for any particular purpose. Further, Novell, Inc. reserves the right to make changes to any and all parts of Novell software, at any time, without any obligation to notify any person or entity of such changes.

Any products or technical information provided under this Agreement may be subject to U.S. export controls and the trade laws of other countries. You agree to comply with all export control regulations and to obtain any required licenses or classification to export, re-export or import deliverables. You agree not to export or re-export to entities on the current U.S. export exclusion lists or to any embargoed or terrorist countries as specified in the U.S. export laws. You agree to not use deliverables for prohibited nuclear, missile, or chemical biological weaponry end uses. See the [Novell International Trade Services Web page \(http://www.novell.com/info/exports/\)](http://www.novell.com/info/exports/) for more information on exporting Novell software. Novell assumes no responsibility for your failure to obtain any necessary export approvals.

Copyright © 2006-2007 Novell, Inc. All rights reserved. No part of this publication may be reproduced, photocopied, stored on a retrieval system, or transmitted without the express written consent of the publisher.

Novell, Inc. has intellectual property rights relating to technology embodied in the product that is described in this document. In particular, and without limitation, these intellectual property rights may include one or more of the U.S. patents listed on the [Novell Legal Patents Web page \(http://www.novell.com/company/legal/patents/\)](http://www.novell.com/company/legal/patents/) and one or more additional patents or pending patent applications in the U.S. and in other countries.

Novell, Inc.
404 Wyman Street, Suite 500
Waltham, MA 02451
U.S.A.
www.novell.com

Online Documentation: To access the latest online documentation for this and other Novell products, see [the Novell Documentation Web page \(http://www.novell.com/documentation\)](http://www.novell.com/documentation).

Novell Trademarks

For Novell trademarks, see [the Novell Trademark and Service Mark list \(http://www.novell.com/company/legal/trademarks/tmlist.html\)](http://www.novell.com/company/legal/trademarks/tmlist.html).

Third-Party Materials

All third-party trademarks are the property of their respective owners.

Contents

About This Guide	7
1 Migrating from Previous Versions of Identity Manager	9
1.1 Installing Identity Manager	11
1.2 Exporting Custom User Application Settings	11
1.3 Migrating User Application Drivers	12
1.4 Updating E-Mail Notification Templates	15
1.5 Creating Team Definitions	16
1.6 Migrating Proxy and Delegate Information	17
1.7 Installing the User Application	18
1.8 Importing Custom User Application Settings	20
1.9 Migrating Password Hints	20
1.10 Migrating Policies	21

About This Guide

This guide describes how to migrate from Identity Manager version 3.0 or 3.0.1 to version 3.5.

Audience

This guide is intended for administrators who are responsible for installing and maintaining Identity Manager.

Feedback

We want to hear your comments and suggestions about this manual and the other documentation included with this product. Please use the User Comments feature at the bottom of each page of the online documentation, or go to www.novell.com/documentation/feedback.html and enter your comments there.

Additional Documentation

For documentation on other Identity Manager features, see the [Identity Manager Documentation Web site](http://www.novell.com/documentation/idm) (<http://www.novell.com/documentation/idm>).

Documentation Conventions

In Novell® documentation, a greater-than symbol (>) is used to separate actions within a step and items in a cross-reference path.

A trademark symbol (®, ™, etc.) denotes a Novell trademark. An asterisk (*) denotes a third-party trademark.

When a single pathname can be written with a backslash for some platforms or a forward slash for other platforms, the pathname is presented with a backslash. Users of platforms that require a forward slash, such as Linux* or UNIX*, should use forward slashes as required by your software.

Migrating from Previous Versions of Identity Manager

1

This document describes the process of migrating from Identity Manager version 3.0 or 3.0.1 to Identity Manager version 3.5. The migration process is performed in a number of tasks, using several installers and utilities. The migration process consists of the following tasks, in the order given. Each of these tasks is described in greater detail in the following sections.

- ♦ [Section 1.1, “Installing Identity Manager,” on page 11](#)
- ♦ [Section 1.2, “Exporting Custom User Application Settings,” on page 11](#)
- ♦ [Section 1.3, “Migrating User Application Drivers,” on page 12](#)
- ♦ [Section 1.4, “Updating E-Mail Notification Templates,” on page 15](#)
- ♦ [Section 1.5, “Creating Team Definitions,” on page 16](#)
- ♦ [Section 1.6, “Migrating Proxy and Delegate Information,” on page 17](#)
- ♦ [Section 1.7, “Installing the User Application,” on page 18](#)
- ♦ [Section 1.8, “Importing Custom User Application Settings,” on page 20](#)
- ♦ [Section 1.9, “Migrating Password Hints,” on page 20](#)
- ♦ [Section 1.10, “Migrating Policies,” on page 21](#)

The migration process for the base Identity Manager installation is shown in [Figure 1-1](#). The migration process for the User Application is shown in [Figure 1-2](#).

Figure 1-1 Identity Manager Migration Process

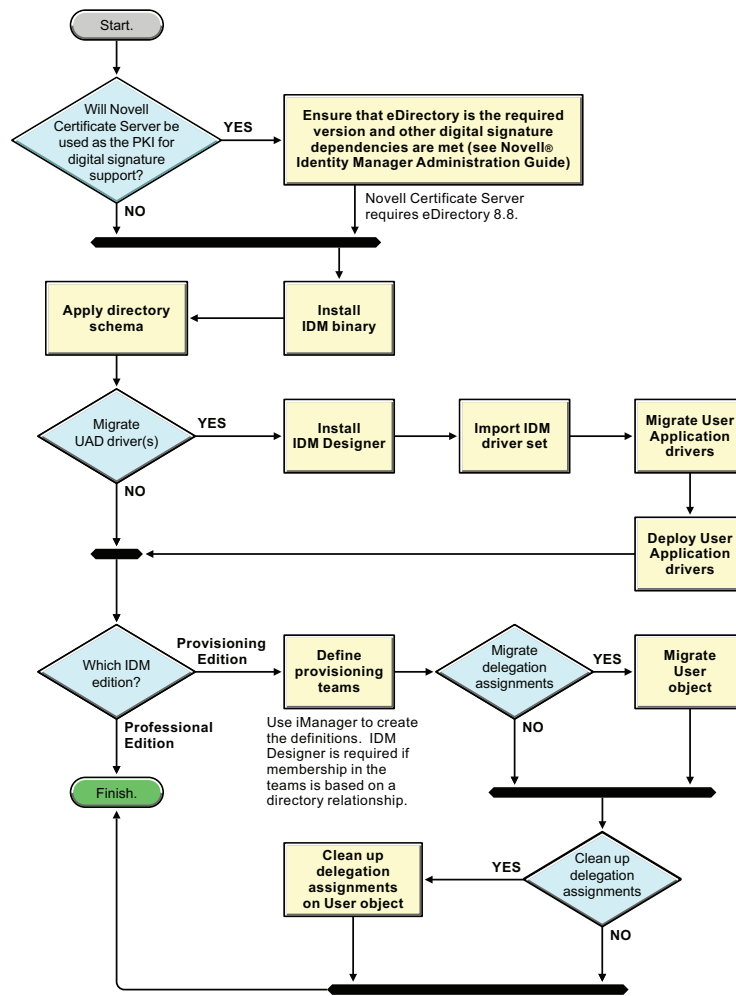
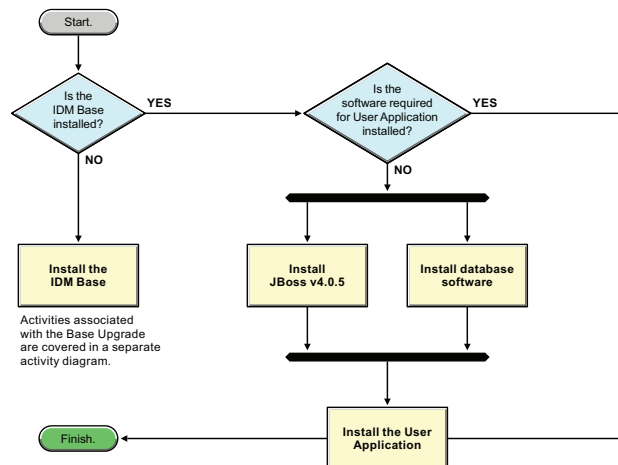


Figure 1-2 Identity Manager User Application Migration Process



NOTE: Before beginning the migration process, make directory and database backups of your Identity Manager system.

1.1 Installing Identity Manager

The first step of the migration process is to install Identity Manager 3. See “Upgrading” in the [Identity Manager 3.5 Installation Guide \(http://www.novell.com/documentation/idm35/index.html\)](http://www.novell.com/documentation/idm35/index.html).

Before upgrading, ensure that your system configuration meets the requirements for Identity Manager 3.5. See “System Requirements for Identity Manager” in the [Identity Manager 3.5 Installation Guide \(http://www.novell.com/documentation/idm35/index.html\)](http://www.novell.com/documentation/idm35/index.html).

During the installation, the Identity Manager 3.5 installation program makes the schema changes necessary to support the Identity Manager 3.5 User Application.

NOTE: The Metadirectory engine and the Administration server must be installed separately, or the installation hangs. Install the Metadirectory engine first by deselecting *Identity Manager Web Components* and *Utilities* in the components selection panel in the Identity Manager installation program. When the installation is complete, run the installation program again; this time deselect *Novell Identity Manager Metadirectory Server* and select *Identity Manager Web Components* and *Utilities* in the components selection panel.

1.2 Exporting Custom User Application Settings

To transfer your portlet and page preference data to version 3.5, you use the portal data export tool in your version 3.0/3.0.1 User Application.

- 1 Log in to your version 3.0/3.0.1 User Application as the User Application Administrator.
- 2 Click *Administration*.

3 Click *Tools*.

The screenshot shows the Identity Manager Administration Tools page. The 'Tools' tab is selected. The 'Portal Data Export' utility is displayed. It contains instructions: 'The Portal Data Export utility allows you to export portal content (pages and portlets) in a format (a portal data export archive) that can be imported to a different portal.' and 'To view the items being exported, click the twistie for each category. To customize the export contents, check or uncheck the individual pages and portlets. Click Export Portal Data after you have made your selections.'

Below the instructions, there are three expandable sections:

- Export Container Pages** (twistie icon):
 - ☒ Admin Container Page
 - ☒ DefaultContainerPage
 - ☒ GuestContainerPage
 - ☒ SampleContainerPage
- Export Shared Pages** (twistie icon):
 - ☒ Select All ☐ Clear All
- Export Portlets** (twistie icon):
 - ☒ Select All ☐ Clear All

At the bottom, there is a warning: 'Exported contents may contain sensitive information. Please protect it appropriately.' and an 'Export Portal Data' button.

4 Select the portlets from which you want to export data.

5 Select *Export Portal Data*.

The User Application displays a dialog box that you use to specify a location on disk to which to export the data.

6 Specify the location on disk to which you want the data exported, then click *OK*.

1.3 Migrating User Application Drivers

Any User Application drivers that you used in version 3.0/3.0.1 that you want to use in Identity Manager 3.5 must be migrated. Migrating a User Application driver updates all directory abstraction layer definitions and provisioning request definitions to use the latest format. Several non-visible runtime configuration objects are also updated and additional properties are added.

The migration of a User Application driver ensures that the driver contains the necessary configuration for new features in Identity Manager 3.5, while maintaining existing configurations (for example, custom entities and provisioning request definitions). In addition, migrating a User Application driver adds any missing e-mail notification templates to the default e-mail notification template container for the associated Identity Vault (see [Section 1.4, “Updating E-Mail Notification Templates,” on page 15](#)).

The migration tool only migrates the User Application configuration of the User Application driver. It does *not* migrate the entire driver. Specifically, it doesn't migrate policies. These are handled by the general Designer and the deploy code (for information about migrating policies, see [Section 1.10, “Migrating Policies,” on page 21](#)).

NOTE: You can set preferences for migrating User Application drivers (see “**Setting Provisioning View Preferences**” in the *Identity Manager 3.5 User Application: Design Guide*).

- 1 Install Identity Manager Designer version 2.0.

See “Installing Designer” in the [Novell Designer 2.0 for Identity Manager 3.5 Guide](http://www.novell.com/documentation/designer20/index.html?page=/documentation/designer20/admin_guide/data/front.html) (http://www.novell.com/documentation/designer20/index.html?page=/documentation/designer20/admin_guide/data/front.html).

- 2 Create a new provisioning project, which will be used to store the local representations of the artifacts that are located on your metadirectory server.

See “**Setting Up a Provisioning Project**” in the *Identity Manager 3.5 User Application: Design Guide*.

- 3 Import the driver set that contains the User Application drivers that you want to migrate.

See “**Importing Provisioning Objects**” in the *Identity Manager 3.5 User Application: Design Guide*.

- 4 Make a backup copy of the new provisioning project as follows:

- 4a Right-click the name of the project in Project view, then select *Copy Project*.

- 4b In the Copy Project dialog box, type a new *Project Name* (or accept the default name), then click *OK*.

- 5 Use one of the following methods to select the Migrate command for the User Application that you want to migrate.

- ♦ In the *Provisioning View*, right-click the name of the User Application and select *Migrate*.
- ♦ In the *Modeler* view, right-click the name of the User Application and select *Application > Migrate*.
- ♦ In the *Outline* view, right-click the name of the User Application and select *Migrate*.

This step migrates the local definition of the driver, found in the IDM Designer workspace. These changes are not made to the meta directory server until a later step when you deploy the changes.

- 6 Click the *Provisioning View* tab.

- 7 Click the plus (+) sign next to the name of the project to show the list of User Applications in the project.

- 8 Right-click the name of the User Application that you want to migrate and select *Migrate*.

The *Close All Editors* dialog box is displayed. This dialog box informs you that migrating the User Application will close all editors.

- 9 Select *Yes*.

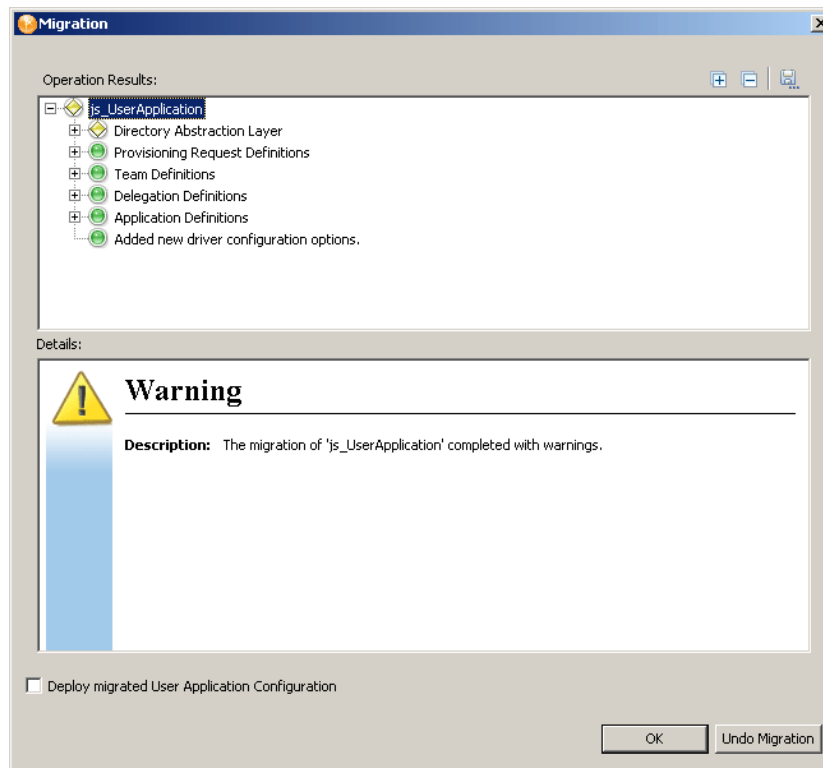
If you have unsaved work in an open editor, the *Save Resource* dialog box is displayed.

- 10 If the *Save Resource* dialog box is displayed, select *Yes* to save changes in open editors.

A dialog box is displayed to warn you that the migration requires changes to the Identity Vault schema. You can choose to continue or cancel the migration.

- 11 Select *Yes* to continue the migration, or select *No* to cancel the migration.

When the migration is completed, a dialog box is displayed that lists information, warnings, and errors encountered during migration. For example, for all objects that are added during migration, information text is displayed for the object that has been added.



You can perform several operations using this dialog box:

- ♦ The migration automatically saves a log file describing the content of the dialog to the *project-name/Provisioning/AppConfig* folder for the associated User Application. The name of the file will be *migrationLogdate.log*.

It is also possible to save the migration log to a file anywhere on disk by clicking the floppy disk icon in the upper right corner of the dialog box.

- ♦ To revert to the original User Application configuration (for example, if errors occurred during the migration) click the *Undo Migration* button.

You can undo the migration until you click *OK* in the dialog box.

- ♦ To deploy the migrated configuration directly from the *Migration* dialog box, select *Deploy Migrated User Application Configuration*.

If you select this option, the migrated driver is validated before it is deployed. If you don't select this option, you should run the Project Checker on the migrated driver.

See “**Validating Provisioning Objects**” in the *Identity Manager 3.5 User Application: Design Guide*.

- 12 Select the desired options in the *Migration* dialog box, then click *OK*.

Designer checks to see if the User Application driver already exists in the Identity Vault. If it does not (for example, if you imported a project from a file, or imported a driver from a driver configuration file), Designer displays a dialog box that asks you if you want to deploy the entire driver.

- 13** If you want to deploy the entire driver at this time, click *Yes*.
- 14** If you do not deploy directly from the migration dialog box, run the Project Checker on migrated objects.
- See “**Validating Provisioning Objects**” in the *Identity Manager 3.5 User Application: Design Guide*.
- If validation errors exist for the configuration, you are informed of the errors, which must be corrected before the driver can be deployed.
- 15** If you do not deploy directly from the migration dialog box, deploy the driver by right-clicking the name of the driver and selecting *Deploy*.
- After the migration, the project is in a state in which only the entire migrated configuration can be deployed. You also cannot import any definitions into the migrated configuration. After the entire migrated configuration has been deployed, this restriction is lifted and you can deploy individual objects and import definitions.
- 16** Repeat **Step 5** through **Step 15** for each User Application driver in the driver set.

NOTE: When you upgrade a driver to Identity Manager 3.5, ensure that all other drivers in the same driver set are also upgraded to Identity Manager 3.5. See [Upgrading Drivers to the New Architecture](http://www.novell.com/documentation/idm35/index.html?page=/documentation/idm35/policy/data/policyupgradeoverview.html) (<http://www.novell.com/documentation/idm35/index.html?page=/documentation/idm35/policy/data/policyupgradeoverview.html>).

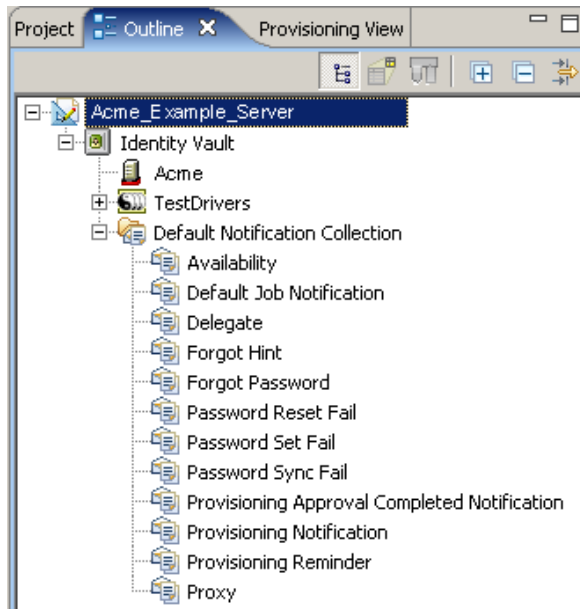
1.4 Updating E-Mail Notification Templates

Identity Manager includes a standard set of e-mail notification templates (see “**Working with E-Mail Templates**” in the *Identity Manager 3.5 User Application: Administration Guide*). Version 3.5 includes new and updated e-mail notification templates. When you migrate a User Application driver, any missing e-mail notification templates are added to the Default Notification Collection. However, existing e-mail notification templates, which may exist from an earlier version of Identity Manager, are not automatically updated.

In some cases, you might want to keep existing templates. For example, you might have customized some e-mail notification templates that were supplied with an earlier version of Identity Manager. These customized templates work in version 3.5. However, you should copy these templates under a different name, as described in the following procedure.

To replace existing templates with new templates:

- 1 Expand the *Outline* view.



- 2 If you want to keep a copy of an existing e-mail notification template, right-click the name of the e-mail notification template in the *Default Notification Collection*, then select *Copy*.
- 3 Specify a new name for the e-mail notification template, then click *OK*.
This prevents the e-mail notification template from being overwritten when you update templates.
- 4 Repeat **Step 2** and **Step 3** for each e-mail notification template that you want to keep.
- 5 In the *Default Notification Collection*, delete the e-mail notification templates that you want to replace.
- 6 Right-click *Default Notification Collection* and select *Update Templates*.
- 7 To deploy the e-mail notification templates to the Identity Vault, right-click *Default Notification Collection* and select *Live > Deploy*.

1.5 Creating Team Definitions

Identity Manager 3.5 provides new features for defining teams. If you do not define one or more teams in Identity Manager 3.5, then the new team features are not displayed in the User Application. Team managers cannot perform team-based tasks and delegation or proxy assignments for their teams, because teams have not been defined. Teams can be defined at any time after you have upgrade Identity Manager and migrated the User Application. You might want to define teams before you finish the migration process to ensure a consistent transition to Identity Manager 3.5. To ensure a consistent transition to Identity Manager 3.5, you might want to define teams before you finish the migration process.

You define teams using the *Provisioning Teams* iManager plug-in. In iManager this plug-in is located in *Roles and Tasks > Provisioning Configuration > Provisioning Teams*. For more

information, see “[Configuring Provisioning Teams](#)” in the *Identity Manager 3.5 User Application: Administration Guide*.

The Provisioning Teams functionality replaces the Task Group and Task Manager Lookup functionality in version 3.0/3.0.1. Task Group and Task Manager Lookup information is not migrated to version 3.5.

NOTE: If you want team membership to be based on a directory relationship, use Designer to add a relationship (see “[Working with Relationships](#)” in the *Identity Manager 3.5 User Application: Design Guide*. On the details page for the relationship, select the *Used by Team Management* option.

1.6 Migrating Proxy and Delegate Information

The way in which Proxy and Delegate information is stored has changed in version 3.5. Migrating this information is not mandatory. The User Application functions without the information, and existing proxy and delegation settings is ignored.

If you want to migrate Proxy and Delegate information to version 3.5, you use the RunMigration utility. The User Application installer installs this utility into the `\util` directory in the User Application installation directory.

Before you run the RunMigration utility, you need to use iManager to turn off the *Require TLS for Simple Binds with Password* option. For more information, see “[Disabling Secure Communications Using iManager](#)” in the *Identity Manager 3.5 User Application: Administration Guide*. You also must ensure that the directory schema is updated before running the RunMigration utility (see [Section 1.1, “Installing Identity Manager,” on page 11](#)).

You run the RunMigration utility from the command line. Running the utility without any parameters displays help for the utility.

Usage

```
RunMigration -h[ost] <ldap host name> -p[port] <ldap port>
-u[sername] <user name (user DN)> -w <login password> -r[oot] <root>
-o <provisioning root> -c[ontainer] <user container> [-? -v
-rep]
```

Arguments

-h[ost]	Source LDAP server host name.
-p[port]	Source LDAP server non-ssl port number (default is 389).
-u[sername]	The source login user DN.
-w or -spassword	The source login password.
-r[oot]	The source root
-o	The source provisioning root
-c[ontainer]	The source user container
-v[erbose]	Verbose mode.
-rep[port]	Report mode - no updates to the directory are made.
-? or -help	Displays help.

Example

```
RunMigration -h example.myorg.com -u "cn=admin,o=myorg" -w test -r  
"o=myorg" -o "cn=UserApplication,cn=TestDrivers,o=myorg" -c  
"ou=myusercontainer,o=myorg" -v
```

1.7 Installing the User Application

The User Application installer upgrades your User Application and migrates workflow data from the version 3.0 or 3.0.1 database to the database used for version 3.5. Because only workflow data is migrated, this step is only applicable if you have the Provisioning Module for Identity Manager.

The User Application installer makes a backup copy of your User Application war file, installs the new User Application war file, and migrates data from your User Application database to XML files. The installation program exports data from your version 3.0 or 3.0.1 database, and stores the data in XML files. When you start the version 3.5 User Application for the first time, the data extracted from your version 3.0 or 3.0.1 database is imported into your version 3.5 database.

NOTE: You must use the User Application installation program to migrate data from your version 3.0/3.0.1 User Application to your version 3.5 User Application. In addition to table structure changes, data transformations that cannot be performed manually are performed by the User Application installation program.

Before you upgrade the User Application, make sure that all prerequisites to installing the Identity Manager 3.5 User Application have been completed (see “System Requirements for Identity Manager” in the *Identity Manager 3.5 Installation Guide* (<http://www.novell.com/documentation/idm35/index.html?page=/documentation/idm35/install/data/front.html>)).

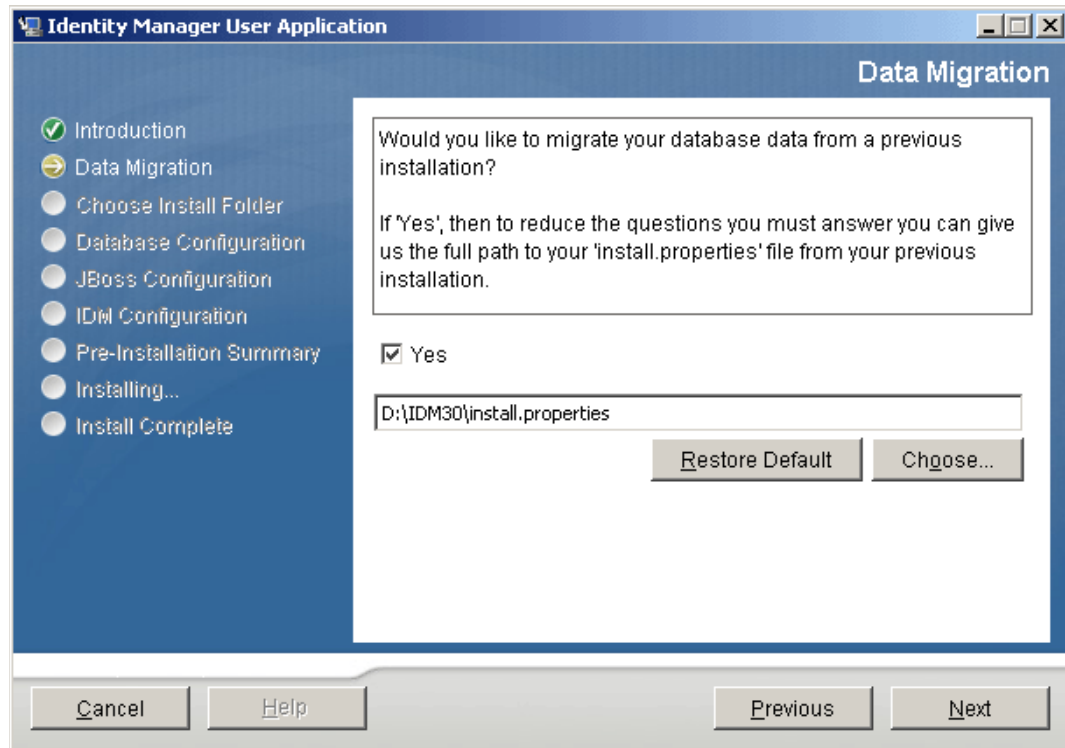
The following installation steps are specific to installations in which you are migrating data from Identity Manager 3.0 or 3.0.1 User Application databases.

- 1 For the version 3.0/3.0.1 system, make sure of the following:
 - ♦ The database server for the User Application is running
 - ♦ The User Application is *not* running

- 2 Start the version 3.5 User Application installation program.

See “Installing the User Application” in the *Identity Manager 3.5 Installation Guide* (<http://www.novell.com/documentation/idm35/index.html?page=/documentation/idm35/install/data/front.html>).

When the User Application installation program starts, it displays a page that asks you if you want to migrate your database data from a previous installation.



- 3 Select the *Yes* option.
- 4 Use the *Choose* button to navigate to the `install.properties` file in the Identity Manager 3.0/3.0.1 User Application installation directory.

Specifying the location of the `install.properties` file from your previous installation reduces the number of items that you must specify in subsequent installation screens.

- 5 Click *Next* to proceed with the installation.

The rest of the installation proceeds as described in the *Identity Manager 3.5 Installation Guide* (<http://www.novell.com/documentation/idm35/index.html?page=/documentation/idm35/install/data/front.html>).

The installation program exports data from your version 3.0 or 3.0.1 database, and stores the data in XML files. When you start the version 3.5 User Application for the first time, the data extracted from your version 3.0 or 3.0.1 database is imported into your version 3.5 database.

NOTE: Version 3.5 adds new timeout properties for Approval activities. The migration software calculates values for these properties based on the timeout interval and retry attempts specified in the version 3.0/3.0.1 software. After the User Application has been migrated, you should check these properties and ensure that the values are appropriate for your workflow.

1.8 Importing Custom User Application Settings

To import the portlet and page preference data that was exported from version 3.0/3.0.1 to version 3.5, you use the portal data import tool in your version 3.5 User Application. See “[Importing Portal Data](#)” in the *Identity Manager 3.5 User Application: Administration Guide*.

NOTE: The organization chart in version 3.5, has many new features. If you modified the organization chart layout in your version 3.0/3.0.1 User Application, some of these features (for example, navigation buttons) might not appear in the version 3.5 application after you import preferences. If this is the case and you want to take advantage of new organization chart navigation features, set organization chart preferences in the version 3.5 User Application after importing version 3.0/3.0.1 preferences. See “[Configuring the Org Chart Portlet](#)” in the *Identity Manager 3.5 User Application: Administration Guide*.

1.9 Migrating Password Hints

The installation of Identity Manager version 3.5 requires upgrading to NMAST[™] 3. See “System Requirements for Identity Manager” in the [Identity Manager 3.5 Installation Guide \(http://www.novell.com/documentation/idm35/index.html\)](http://www.novell.com/documentation/idm35/index.html).

Password Hints are no longer used in version 3.5. If you used Password Hints in your version 3.0/3.0.1 software, you can migrate Password Hints to Password Reminders.

- 1 Log in to the User Application as the User Application Administrator.
- 2 Click *Administration*.
- 3 Click *Login*.
- 4 Click *True* for *Enable Hint Migration*.

The screenshot shows the Identity Manager 3.5 Administration console. The top navigation bar includes 'Welcome Admin', 'Identity Self-Service', 'Requests & Approvals', and 'Administration'. The 'Administration' tab is active, showing sub-tabs for 'Application Configuration', 'Page Admin', 'Portlet Admin', 'Provisioning', and 'Security'. The 'Application Configuration' sub-tab is selected, displaying a left-hand menu with options like 'Portal Configuration', 'Caching', 'Driver Status', 'LDAP Parameters', 'Logging', 'Portal Settings', 'Themes', 'Import Export Tools', 'Portal Data Export', 'Portal Data Import', 'Password Module Setup', 'Challenge Response', 'Forgot Password', 'Login', and 'Password Sync Status'. The 'Login' option is highlighted. The main content area is titled 'Login Settings' and contains instructions: 'Update these settings to configure the behavior of the Login page for the user application. If you have configured your Forgot Password page outside the firewall (in a separate WAR file) you must specify the location in the Forgot Password link (for example, (/jsps/pwdmgt/ForgotPassword.jsf). The Forgot Password Return Link must specify the URL it can use to return to the User Application (for example, https://idmhost:sslport/idm)'. Below the instructions are several settings: 'Allow ID Wildcard' (radio buttons for true/false, false is selected), 'Enable Forgot Password Link' (radio buttons for true/false, true is selected), 'Forgot Password Link (for example: /jsps/pwdmgt/ForgotPassword.jsf):' (text field with the value /jsps/pwdmgt/ForgotPassw), 'Forgot Password Return Link (for example: https://idmhost:sslport/idm):' (empty text field), 'Enable SSO' (radio buttons for true/false, false is selected), 'User ID Key:' (text field with the value login-user), 'Password Key:' (text field with the value login-pass), 'Enable Hint Migration' (checkboxes for true/false, true is checked), and 'Enable Locale Check' (radio buttons for true/false, false is selected). A 'Save' button is located at the bottom of the settings area.

- 5 Click *Save*.

For more information, see “[Configuring Login](#)” in the *Identity Manager 3.5 User Application: Administration Guide*.

1.10 Migrating Policies

For information about migrating policies, see [Upgrading Identity Manager Policies \(http://www.novell.com/documentation/idm35/index.html?page=/documentation/idm35/policy/data/policyupgradeoverview.html\)](http://www.novell.com/documentation/idm35/index.html?page=/documentation/idm35/policy/data/policyupgradeoverview.html).