

Upgrade Guide

Novell® PlateSpin® Orchestrator™

2.0.2

October 9, 2009

www.novell.com



Legal Notices

Novell, Inc. makes no representations or warranties with respect to the contents or use of this documentation, and specifically disclaims any express or implied warranties of merchantability or fitness for any particular purpose. Further, Novell, Inc. reserves the right to revise this publication and to make changes to its content, at any time, without obligation to notify any person or entity of such revisions or changes.

Further, Novell, Inc. makes no representations or warranties with respect to any software, and specifically disclaims any express or implied warranties of merchantability or fitness for any particular purpose. Further, Novell, Inc. reserves the right to make changes to any and all parts of Novell software, at any time, without any obligation to notify any person or entity of such changes.

Any products or technical information provided under this Agreement may be subject to U.S. export controls and the trade laws of other countries. You agree to comply with all export control regulations and to obtain any required licenses or classification to export, re-export or import deliverables. You agree not to export or re-export to entities on the current U.S. export exclusion lists or to any embargoed or terrorist countries as specified in the U.S. export laws. You agree to not use deliverables for prohibited nuclear, missile, or chemical biological weaponry end uses. See the [Novell International Trade Services Web page \(http://www.novell.com/info/exports/\)](http://www.novell.com/info/exports/) for more information on exporting Novell software. Novell assumes no responsibility for your failure to obtain any necessary export approvals.

Copyright © 2008-2009 Novell, Inc. All rights reserved. No part of this publication may be reproduced, photocopied, stored on a retrieval system, or transmitted without the express written consent of the publisher.

Novell, Inc. has intellectual property rights relating to technology embodied in the product that is described in this document. In particular, and without limitation, these intellectual property rights may include one or more of the U.S. patents listed on the [Novell Legal Patents Web page \(http://www.novell.com/company/legal/patents/\)](http://www.novell.com/company/legal/patents/) and one or more additional patents or pending patent applications in the U.S. and in other countries.

Novell, Inc.
404 Wyman Street, Suite 500
Waltham, MA 02451
U.S.A.
www.novell.com

Online Documentation: To access the latest online documentation for this and other Novell products, see [the Novell Documentation Web page \(http://www.novell.com/documentation\)](http://www.novell.com/documentation).

Novell Trademarks

For Novell trademarks, see [the Novell Trademark and Service Mark list \(http://www.novell.com/company/legal/trademarks/tmlist.html\)](http://www.novell.com/company/legal/trademarks/tmlist.html).

Third-Party Materials

All third-party trademarks are the property of their respective owners.

Contents

About This Guide	7
1 Upgrade Overview	9
1.1 Basic Functions of the Upgrade	9
1.2 Compatibility Checking Behavior	10
1.2.1 Behavior Shown by the Orchestrate VM Client When Detecting Incompatibility	11
1.2.2 Development Client Behavior When Detecting Incompatibility	11
1.3 Configuring the Upgrade	13
2 Upgrading ZENworks Orchestrator 1.3 Components to PlateSpin Orchestrate 2.0	15
2.1 Upgrading the ZENworks Orchestrator Server Components	15
2.1.1 Checking Out the VMs that Are to be Used in PlateSpin Orchestrate	16
2.1.2 Backing Up the Orchestrator Server Prior to Upgrading	16
2.1.3 Checking the Current Version of ZENworks Orchestrator	16
2.1.4 Snapshotting the Existing Server Installation	17
2.1.5 Upgrading the ZENworks Orchestrator Server Packages	18
2.1.6 Removing Obsolete and Unneeded ZENworks Orchestrator Patterns	22
2.1.7 Revising An Outdated, Required .conf File	22
2.1.8 Running Discover on VM Images	23
2.1.9 Checking the Upgraded Version of the Orchestrate Server	23
2.1.10 Configuring the Upgraded Server Packages	24
2.2 Orchestrator Components That Are Not Upgraded	32
2.3 Recovering from a Failed Orchestrator Server Upgrade	33
2.3.1 Failure Scenario 1: Error Resolution	33
2.3.2 Failure Scenario 2: Cannot Resolve Error	33
2.4 Restoring ZENworks Orchestrator If the Upgrade Fails	33
2.4.1 Requirements	34
2.4.2 Rollback Procedure	34
2.5 Upgrading the ZENworks Orchestrator Agents and Clients	37
2.5.1 Checking the Current Version of the Orchestrator Agent	37
2.5.2 Backing Up the Orchestrator Agent Prior to Upgrading	38
2.5.3 Automatically Upgrading the Orchestrate Agent from the Orchestrate Development Client	38
2.5.4 Using the Product ISO to Upgrade Agents and Clients on a SLES 10 SP1 Machine	38
2.5.5 Using the ISO to Upgrade the Orchestrator Agent and Clients on Red Hat Enterprise Linux 4 Machines	45
2.5.6 Using the ISO to Upgrade the Orchestrator Agent on Red Hat Enterprise Linux 5 Machines	46
2.5.7 Using the ISO to Upgrade the Orchestrator Agent or the Orchestrator Clients on Windows Machines	47
2.5.8 Using the Administrator Information Page to Upgrade the Agents and Clients	47
2.6 Upgrading the ZENworks VM Manager Console to PlateSpin Orchestrate VM Client	48
2.7 Running the Upgrade Configuration on an Enterprise Scale	48
2.8 Upgrading a ZENworks Orchestrator 1.3 High Availability Configuration	48
2.8.1 Snapshotting the ZENworks Orchestrator Environment	49
2.8.2 Enabling Rollback and Backing Up the Server Instance	49
2.8.3 Upgrading the ZENworks Orchestrator Server	50
2.8.4 Removing Obsolete ZENworks Orchestrator Patterns	51

2.8.5	Configuring Upgraded Orchestrate Servers in the High Availability Environment . . .	51
2.8.6	Installing and Configuring Monitoring in the High Availability Environment	52

A Documentation Updates 59

A.1	October 9, 2009	59
A.2	July 15, 2009	59
A.3	June 17, 2009 (2.0.2 Release)	59

About This Guide

This *Upgrade Guide* introduces the process of upgrading Novell® ZENworks® Orchestrator 1.3 to PlateSpin® Orchestrator 2.0.2. The guide provides an introductory overview of the requirements for upgrading and explains which components are compatible. Further, it provides specific instructions for performing the upgrade. The guide is organized as follows:

- ♦ Chapter 1, “Upgrade Overview,” on page 9
- ♦ Chapter 2, “Upgrading ZENworks Orchestrator 1.3 Components to PlateSpin Orchestrator 2.0,” on page 15

Audience

The contents of this guide are of interest to the following individuals:

VM Administrator: A PlateSpin Orchestrator virtual machine (VM) administrator manages the life cycle of the VMs in the enterprise, including creating, starting, stopping, migrating, and deleting VMs. For more information about the Orchestrator VM Client tasks and tools used by the VM administrator, see the *PlateSpin Orchestrator 2.0 VM Client Guide and Reference*. For more information about the Orchestrator Development Client tasks and tools used by the VM administrator, see the *PlateSpin Orchestrator 2.0 Virtual Machine Management Guide*.

Orchestrator Administrator: A PlateSpin Orchestrator Administrator deploys jobs, manages users, and monitors distributed computing resources. Administrators can also create and set policies for automating the usage of these computing resources. For more information about the tasks and tools used by the Orchestrator Administrator, see the *PlateSpin Orchestrator 2.0 Administrator Reference* and the *PlateSpin Orchestrator 2.0 Command Line Reference*.

User: The end user of PlateSpin Orchestrator, also called a “Job Manager,” runs and manages jobs that have been created by a Job Developer and deployed by the administrator. It is also possible that the end user could be a developer who has created applications to run on distributed computing resources. For more information about the tasks and tools used by the Job Manager, see the *PlateSpin Orchestrator 2.0 Server Portal Reference*.

Job Developer: The developer has control of a self-contained development system where he or she creates jobs and policies and tests them in a laboratory environment. When the jobs are tested and proven to function as intended, the developer delivers them to the PlateSpin Orchestrator administrator. For more information about the tasks and tools used by the job developer, see the *PlateSpin Orchestrator 2.0 Developer Guide and Reference*.

Prerequisite Skills

As data center managers or IT or operations administrators, it is assumed that users of the product have the following background:

- ♦ General understanding of network operating environments and systems architecture.
- ♦ Knowledge of basic Linux* shell commands and text editors.

Feedback

We want to hear your comments and suggestions about this manual and the other documentation included with this product. Please use the User Comments feature at the bottom of each page of the online documentation, or go to www.novell.com/documentation/feedback.html (<http://www.novell.com/documentation/feedback.html>) and enter your comments there.

Documentation Updates

For the most recent updates for this *Upgrade Guide*, visit the [PlateSpin Orchestrate 2.0 Web site](http://www.novell.com/documentation/psorchestr20/) (<http://www.novell.com/documentation/psorchestr20/>).

Documentation Conventions

In Novell documentation, a greater-than symbol (>) is used to separate actions within a step and items in a cross-reference path.

A trademark symbol (® , ™, etc.) denotes a Novell trademark. An asterisk (*) denotes a third-party trademark.

When a single pathname can be written with a backslash for some platforms or a forward slash for other platforms, the pathname is presented with a backslash. Users of platforms that require a forward slash, such as Linux* or UNIX, should use forward slashes as required by your software.

Upgrade Overview

1

PlateSpin® Orchestrator from Novell® has been engineered to allow upgrading of Novell ZENworks® Orchestrator 1.3 components to continue working in the PlateSpin Orchestrator 2.0 environment. The upgrade process affects the following Orchestrator components:

- ◆ the Orchestrator Server (1.3) upgrades to PlateSpin Orchestrator Server (2.0.2)
- ◆ the Orchestrator Console (1.3) upgrades to PlateSpin Orchestrator Development Client (2.0.2)
- ◆ the Orchestrator Agent (1.3) upgrades to the PlateSpin Orchestrator Agent (2.0.2)
- ◆ the Orchestrator Virtual Machine Builder (1.3) upgrades to the PlateSpin Virtual Machine Builder (2.0)
- ◆ the Orchestrator VM Manager client (1.3) upgrades to PlateSpin Orchestrator VM Client (2.0.2)
- ◆ the Orchestrator Virtual Machine Builder Agent
- ◆ the Orchestrator Monitoring Server
- ◆ the Orchestrator Monitoring Agent

This section explains what you must do prior to initiating the upgrade process, how the process works, and how you can see the upgrade process happening. The following information is included:

- ◆ [Section 1.1, “Basic Functions of the Upgrade,” on page 9](#)
- ◆ [Section 1.2, “Compatibility Checking Behavior,” on page 10](#)
- ◆ [Section 1.3, “Configuring the Upgrade,” on page 13](#)

NOTE: The upgrade process from 2.0.1 to 2.0.2 is identical to the upgrade from 1.3 to 2.0.2.

1.1 Basic Functions of the Upgrade

Before you begin the PlateSpin Orchestrator upgrade process, you need to know the underlying assumptions of the process so that you can better understand how to proceed. The following list details the most important of those assumptions:

- ◆ To check the installed Orchestrator components for version number, run the following command on a Linux machine where agent, client, or server components are installed.

```
rpm -qa | grep 'novell-zen'
```

To check version numbers on a Windows machine, open the *Add or Remove Programs* console in Windows and look for the agent or client version number in the programs list.

- ◆ The upgrade to PlateSpin Orchestrator must be done for all Orchestrator Server, Orchestrator Console, and all Orchestrator Agent components. Running older agents with newer server components or running older consoles and interfaces with newer server components (or vice versa) is not supported.
- ◆ Upgrading a prior release of a 32-bit ZENworks Orchestrator installation to a newer 64-bit version of PlateSpin Orchestrator is not supported. Similarly, upgrading a prior release of a 64-bit ZENworks Orchestrator installation to a newer 32-bit version of PlateSpin Orchestrator is not supported.

- ◆ The ZENworks Orchestrator Server must be upgraded before Orchestrator Agents are upgraded. The Orchestrate Server operates with older agents running, but older agents cannot communicate with the PlateSpin Orchestrate 2.0 Server. You can upgrade the agents by selecting the Upgrade option on the Resource Registration dialog in the Development Client (formerly referred to as the ZENworks Orchestrator Console). For more information, see [“Walkthrough: Creating a Resource Account”](#) in the *PlateSpin Orchestrate 2.0 Installation and Configuration Guide*.

NOTE: Upgrading an agent before upgrading the server causes the agent to terminate and to throw the following message:

```
11.05 06:23:39 : ERROR: Agent software version mismatch.
11.05 06:23:39 : ERROR: Current agent version: 2.0.2
11.05 06:23:39 : ERROR: Server expecting version: 1.3.0
CTRL-C Received.
Shutdown node core: perf162
ZOS Agent Terminating: 11.05 06:23:39
```

- ◆ After you upgrade the server components, older versions of the ZENworks Orchestrator Agents, the ZENworks Orchestrator Console, and the Orchestrator VM Manager GUI might not work with the newer server components. The Orchestrate Development Client identifies the managed nodes that have non-compatible agents. For more information about component compatibility, see [Section 1.2, “Compatibility Checking Behavior,”](#) on page 10.
- ◆ The ZENworks Orchestrator 1.3 VM Manager interface is not upgraded; it is replaced entirely by the PlateSpin Orchestrate VM Client. However, any previous version should be uninstalled before installing version 2.0.
- ◆ Errors can occur during the upgrade process. These errors can be resolved and the upgrade process can be re-run. For more information about how the recovery works, see [Section 2.3, “Recovering from a Failed Orchestrator Server Upgrade,”](#) on page 33.
- ◆ After the PlateSpin Orchestrate Server is upgraded and started, rolling back to ZENworks Orchestrator 1.3 is not supported.
- ◆ Step-by-step information about the events occurring during the upgrade process is recorded in `server.log`, located in the `/var/opt/novell/zenworks/zos/server/logs` directory.

1.2 Compatibility Checking Behavior

For managed agents (nodes), the agents report the version incompatibility in the agent log file. On the server, the attempted connection by an incompatible agent is detected, and the agent is listed on the Orchestrator Console as incompatible and in need of either an upgrade or downgrade to the correct version. Also, an incompatible agent connection attempt causes the node manager on the server to raise a `NEED_UPGRADE` event that can be caught to provide custom handling of agents in need of upgrade.

This section includes the following information:

- ◆ [Section 1.2.1, “Behavior Shown by the Orchestrate VM Client When Detecting Incompatibility,”](#) on page 11
- ◆ [Section 1.2.2, “Development Client Behavior When Detecting Incompatibility,”](#) on page 11

1.2.1 Behavior Shown by the Orchestrate VM Client When Detecting Incompatibility

The information in this section lists the known behaviors exhibited when the PlateSpin Orchestrate VM Client (formerly referred to as Orchestrator VM Manager) is upgraded to version 2.0 when other Orchestrator components are not upgraded.

Even when the Orchestrator Monitoring Server is newer or older than the installed VM Management Interface, it is not necessarily incompatible with the interface. The interface does not detect or display the version of the Monitoring Server. The Monitoring Server uses Internet browser capabilities to display its information in HTML format, so the monitored information is still available.

1.2.2 Development Client Behavior When Detecting Incompatibility

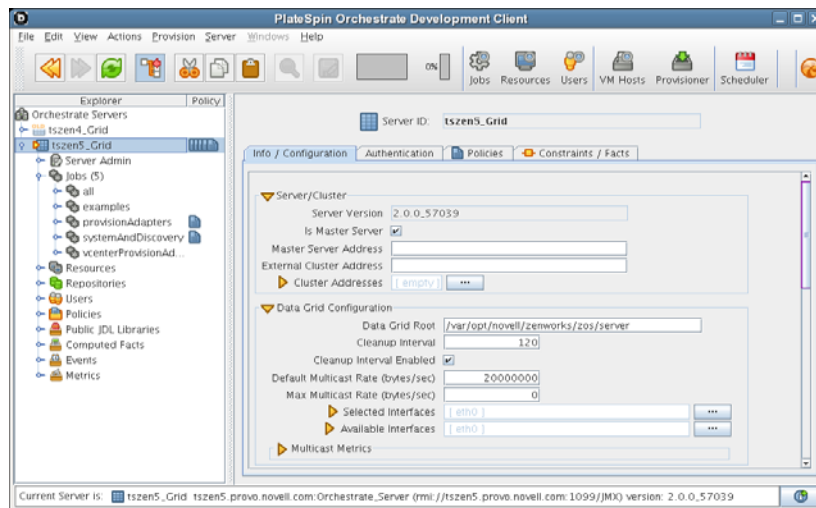
The PlateSpin Orchestrate Development Client detects incompatibility only in the Orchestrate Agent. The information in the following sections details that behavior.

- ◆ “If the Orchestrate Server Is Not Compatible with the Development Client” on page 11
- ◆ “When an Agent Version Does Not Match the Server Version” on page 12

If the Orchestrate Server Is Not Compatible with the Development Client

When the Orchestrate Development Client detects an older version of the ZENworks Orchestrator Server, the console displays an “old” icon overlay over the grid object.

Figure 1-1 PlateSpin Orchestrator Development Client Displaying an “Old” Icon



The Orchestrate Development Client displays a “new” icon overlay on the Grid Object if the Grid Object is newer than the Development Client. (The same behavior happens if you are using the ZENworks Orchestrator Console.) The version of the server is included in the tool tip display of the grid object in the Explorer tree view. The logged-in server shows the version at the bottom of the view.

When an Agent Version Does Not Match the Server Version

When an older, incompatible version of the agent communicates with the server, the server detects it and flags the agent as “old.” This incompatibility is displayed in the Orchestrate Development Client, where an older version of the agent is shown in the Tree view with an “old” icon or in the Monitor view with an “old” icon. At this point, the agent also logs a fatal connection error.

Figure 1-2 Old Orchestrate Agent Resource Displayed in Tree View

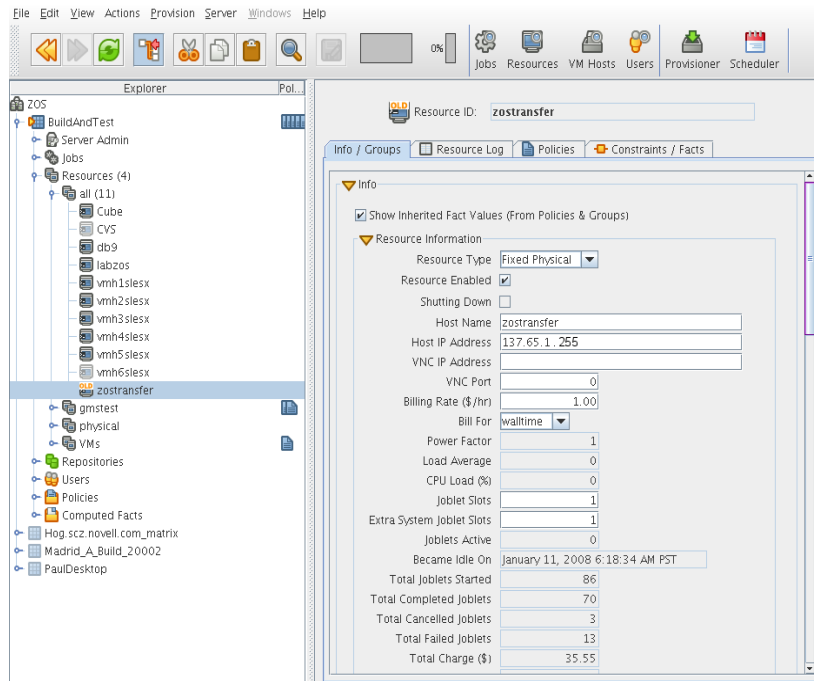
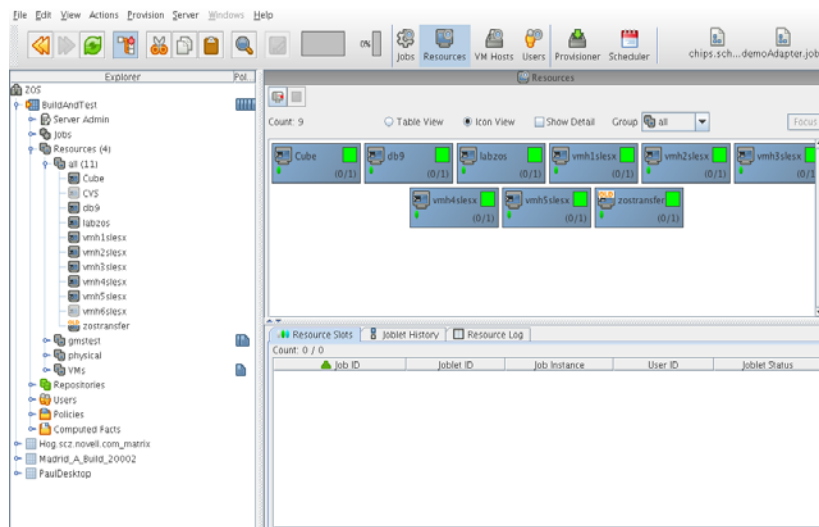


Figure 1-3 Old Orchestrate Agent Resource Displayed in Tree View and Monitor View



1.3 Configuring the Upgrade

Following the installation of the new software, you need to configure the software for your PlateSpin Orchestrate system. You can do this by launching either a terminal-based config script or a GUI Configuration Wizard from the command line.

When you use the GUI Configuration Wizard, you have the option of configuring the software now or saving the config script for use during an automated mass upgrade. For more information, see [Section 2.7, “Running the Upgrade Configuration on an Enterprise Scale,” on page 48](#).

Upgrading ZENworks Orchestrator 1.3 Components to PlateSpin Orchestrate 2.0

2

This section provides information about upgrading from Novell® ZENworks® Orchestrator 1.3 to PlateSpin® Orchestrate 2.0 from Novell. It is important that you upgrade the ZENworks Orchestrator components you have installed in the sequence that follows:

- ♦ [Section 2.1, “Upgrading the ZENworks Orchestrator Server Components,” on page 15](#)
- ♦ [Section 2.2, “Orchestrator Components That Are Not Upgraded,” on page 32](#)
- ♦ [Section 2.3, “Recovering from a Failed Orchestrator Server Upgrade,” on page 33](#)
- ♦ [Section 2.4, “Restoring ZENworks Orchestrator If the Upgrade Fails,” on page 33](#)
- ♦ [Section 2.5, “Upgrading the ZENworks Orchestrator Agents and Clients,” on page 37](#)
- ♦ [Section 2.6, “Upgrading the ZENworks VM Manager Console to PlateSpin Orchestrate VM Client,” on page 48](#)
- ♦ [Section 2.7, “Running the Upgrade Configuration on an Enterprise Scale,” on page 48](#)
- ♦ [Section 2.8, “Upgrading a ZENworks Orchestrator 1.3 High Availability Configuration,” on page 48](#)

NOTE: The upgrade process from 2.0.1 to 2.0.2 is identical to the upgrade from 1.3 to 2.0.2.

2.1 Upgrading the ZENworks Orchestrator Server Components

The following information lists the upgrade steps in the order that they should be performed.

1. [Section 2.1.1, “Checking Out the VMs that Are to be Used in PlateSpin Orchestrate,” on page 16](#)
2. [Section 2.1.2, “Backing Up the Orchestrator Server Prior to Upgrading,” on page 16](#)
3. [Section 2.1.3, “Checking the Current Version of ZENworks Orchestrator,” on page 16](#)
4. [Section 2.1.4, “Snapshotting the Existing Server Installation,” on page 17](#)
5. [Section 2.1.5, “Upgrading the ZENworks Orchestrator Server Packages,” on page 18](#)

If you use the command line tools to upgrade, we recommend that you also clean up any obsolete packages after the upgrade. Follow the steps in [“Removing Obsolete and Unneeded ZENworks Orchestrator Patterns” on page 22](#).

6. [Section 2.1.6, “Removing Obsolete and Unneeded ZENworks Orchestrator Patterns,” on page 22](#).
7. [Section 2.1.7, “Revising An Outdated, Required .conf File,” on page 22](#)
8. [Section 2.1.8, “Running Discover on VM Images,” on page 23](#)

9. [Section 2.1.9, “Checking the Upgraded Version of the Orchestrate Server,” on page 23](#)
10. [Section 2.1.10, “Configuring the Upgraded Server Packages,” on page 24](#)

NOTE: To perform a mass upgrade of ZENworks Orchestrator Server 1.3 components, we recommend that you use a reputable application software distribution method to upgrade to the newer versions that ship with PlateSpin Orchestrate 2.0. For example, you can use ZENworks Linux Management to distribute new agents and clients to Linux servers.

If you choose to use ZENworks Linux Management, you should enable the rollback command. This will let you easily roll back to the prior version of ZENworks Orchestrator prior if the upgrade to PlateSpin Orchestrate is unsuccessful.

For more information, see [Section 2.7, “Running the Upgrade Configuration on an Enterprise Scale,” on page 48](#).

2.1.1 Checking Out the VMs that Are to be Used in PlateSpin Orchestrate

Any VMs that are checked in to the ZENworks Orchestrator 1.3 Warehouse cannot be discovered in PlateSpin Orchestrate VM Client. Therefore, to continue to use VMs that were created in ZENworks Orchestrator, you must check them out of the Warehouse before upgrading to PlateSpin Orchestrate.

For information on checking out VMs from the 1.3 Warehouse, see [Checking Out a Virtual Machine \(http://www.novell.com/documentation/zen_orchestrator13/zos13_vm_mgt/data/b9ugoht.html#b9ugov1\)](http://www.novell.com/documentation/zen_orchestrator13/zos13_vm_mgt/data/b9ugoht.html#b9ugov1) in the *Novell ZENworks Orchestrator 1.3 Virtual Machine Management Guide*.

2.1.2 Backing Up the Orchestrator Server Prior to Upgrading

As with the installation of any software, it is always a wise precaution to back up a working copy of the older version of ZENworks Orchestrator before you install the newer version of PlateSpin Orchestrate. To back up the old version, copy the `/var/opt/novell/zenworks/zos/server` directory. Of course, because ZENworks Orchestrator jobs are nearly always running, the only guaranteed “safe” way to make this copy is to stop the server before you make the backup. Even so, if the server is not too busy, making a backup when it is running is usually acceptable.

If you want to restore the older version of ZENworks Orchestrator, stop the Orchestrator Server, copy the backup of the `/var/opt/novell/zenworks/zos/server` directory into its original location, and restart the Orchestrator Server.

2.1.3 Checking the Current Version of ZENworks Orchestrator

Before you upgrade the ZENworks Orchestrator packages from version 1.3 to the PlateSpin Orchestrate 2.0.2 packages, you should check which packages of the older Orchestrator version need to be upgraded and which non-Novell packages are included in the product packages.

To do this, run the following command:

```
rpm -qa | grep 'novell-zen'
```


We recommend that you record the results of this command so that you can compare it with the results of a similar task following the upgrade (see [Section 2.1.9, “Checking the Upgraded Version of the Orchestrate Server,” on page 23](#)).roo

2.1.4 Snapshotting the Existing Server Installation

Before you begin the upgrade process of the ZENworks Orchestrator Server, make sure that all running jobs are complete. If the jobs have not completed on their own, the upgrade processes forcibly cancels them, which is the normal behavior when the server is shut down. The effect on the jobs is that they are terminated abruptly before they finish running. The specific consequence of this termination depends on the job that is terminated.

When you are sure that the jobs are complete, you need to run a specific shutdown command to prepare a “snapshot” of the current configuration of the server so that a new version of a server can be started with the configuration of the old server.

When an upgrade of server components occurs, all of the current server settings (configuration) and state (model) for the current instance is written to a platform-independent XML encoded snapshot. This snapshot is read in by a newly upgraded server instance to initialize its settings and state to that of the previous server instance.

The snapshot data is read when a newly upgraded server instance is first started, initializing its settings and its state to that of the previous server instance. The snapshot files must exist in `/var/opt/novell/zenworks/zos/server/snapshot`.

Use the following steps to perform the snapshot:

- 1 Check the running status of the server:

```
/etc/init.d/novell-zosserver status
```

If the Orchestrator Server is already stopped, you must start it before a snapshot can be created:

```
/etc/init.d/novell-zosserver start
```

- 2 Create a snapshot of the server’s current configuration with the following command:

```
/etc/init.d/novell-zosserver stop --snapshot
```

You can also create the snapshot by using the Development Client to shut down the server. To do so, select *Server > Shutdown Server* to display the Server Shutdown Confirmation dialog box.



Select *Perform Snapshot of Server State*, then click *Shutdown*.

2.1.5 Upgrading the ZENworks Orchestrator Server Packages

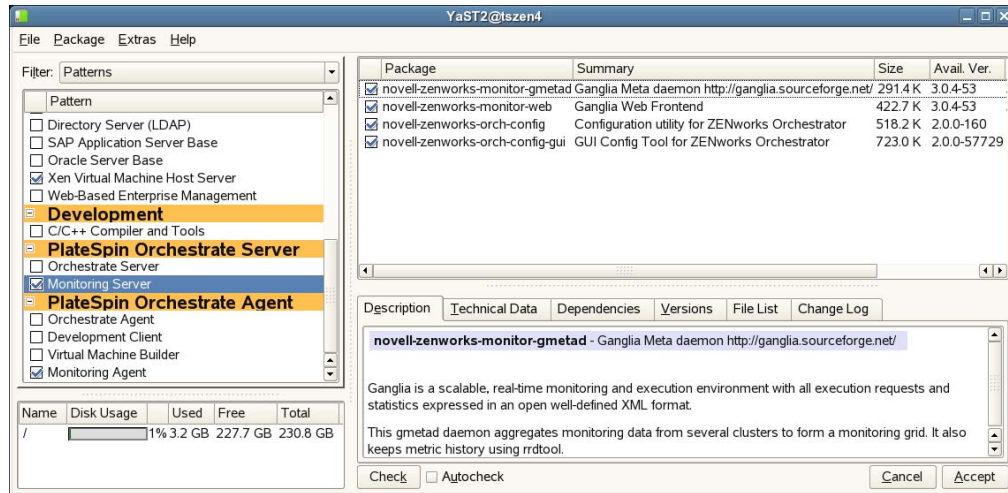
There are two methods for upgrading ZENworks Orchestrator Server Packages.

- ♦ If you want to use a graphical user interface (GUI) see [“Upgrading ZENworks Orchestrator Server Packages Using YaST”](#) on page 18.
- ♦ If you want to use the command line to upgrade the packages, see [“Upgrading ZENworks Orchestrator Server Packages at the Command Line”](#) on page 20.
- ♦ If you use ZENworks Linux Management tools to upgrade the packages, we recommend that you use the same tools to clean up the environment, see

Upgrading ZENworks Orchestrator Server Packages Using YaST

Use the following procedure if you want to use YaST, a graphical user interface, to upgrade the ZENworks Orchestrator packages. If you want to use the command line to upgrade, see [“Upgrading ZENworks Orchestrator Server Packages at the Command Line”](#) on page 20.

- 1** Download the appropriate PlateSpin Orchestrate 2.0.2 ISO (32-bit or 64-bit), then prepare it for installation:
 - ♦ (Optional) Burn a DVD of the ISO image and load it into the DVD drive of the target machine.
 - ♦ (Optional) Copy the ISO image to the local file system. For more information, see [“Adding a Local Mount Point As An Installation Source in YaST”](#) on page 19.
 - ♦ (Optional) Mount the ISO image file on the machine where PlateSpin Orchestrate is to be installed (the “target” machine). For details, see [“Adding a Local Directory As An Installation Source in YaST”](#) on page 20.
 - ♦ (Optional) If you are installing the ISO image to a large network, extract the product files from the ISO image to a web server / ftp server that can be accessed by the target machine without the need for authentication or anonymous login. For details, see [“Adding an ISO or Web URL As An Installation Source in YaST”](#) on page 20.
- 2** Upgrade ZENworks Orchestrator Server software packages:
 - 2a** Log in to the target SLES server as `root`, then open YaST2.
 - 2b** In YaST2, select *Software > Add-on Product*, select the method to open the product ISO on your machine, click *Next*, then follow the procedures to mount the ISO.
 - 2c** From the License Agreement page, select the option to agree to the license terms, then click *Next*.
 - 2d** In YaST2, open the *Filter* drop-down list, select *Patterns* to display the Patterns and Packages view, then click *Details* to close the information pane and open the Package frame.
 - 2e** In the *Patterns* frame (left-hand side of the view), select a PlateSpin Orchestrate pattern already installed on this server. The *Package* frame lists the packages either installed or not yet installed for this pattern.



Component packages already installed to the server are checked.

NOTE: Package names for this release of PlateSpin Orchestrate continue to use “novell-zenworks” in the prefix or “ZENworks Orchestrator” in the summary description.

- 2f** Right-click on any of the installed package names, click *All in This List > Update if newer version available*, then click *Accept* to install the upgraded packages.
- 2g** Repeat **Step 2f** and **Step 2f** for each installed pattern you are upgrading.
 - After the RPMs are upgraded, scripts are run that do the following:
 - ◆ Back up the existing server instance directory
 - ◆ Upgrade the RPMs for the selected PlateSpin Orchestrate patterns
- 3** Configure the PlateSpin Orchestrate Server. You can use one of two information gathering methods to perform the configuration:
 - ◆ Run the Orchestrator product configuration script. If you use this method, continue with the steps in “[Running the PlateSpin Orchestrate Product Configuration Script to Configure the Upgraded Packages](#)” on page 24.
 - ◆ Run the GUI Configuration Wizard. If you use this method, skip to the steps in “[Running the GUI Configuration Wizard to Configure the Upgraded Packages](#)” on page 26.

Adding a Local Mount Point As An Installation Source in YaST

If you want to mount the ISO image file on a particular machine,

- 1** Log in to the target SLES 10 server as root.
- 2** From the command line of the target machine, enter the following commands


```
mkdir /mnt/iso
mount -o loop PlateSpin_Orchestrate-2.0.2.x86_64.iso /mnt/iso
```

 (where you substitute the name of the ISO (32-bit or 64-bit) that you are using).
- 3** Open YaST2.
- 4** In the YaST Control Center, click *Software*, then click *Installation Source* to display the Configured Software Catalogs view.

- 5 In the Configured Software Catalogs view, click *Add* to open the Media Type view.
- 6 In the Media Type view, select *Local Directory*, then click *Next* to open the Local Directory or ISO view.
- 7 In the *Path to Directory or ISO Image* field of the Local Directory or ISO view, enter the mount point:

`/mnt/iso`

Adding a Local Directory As An Installation Source in YaST

If you want to mount the ISO image file on a particular machine,

- 1 Log in to the target SLES 10 server as root.
- 2 Open YaST2.
- 3 In the YaST Control Center, click *Software*, then click *Installation Source* to display the Configured Software Catalogs view.
- 4 In the Configured Software Catalogs view, click *Add* to open the Media Type view.
- 5 In the Media Type view, select *Local Directory*, then click *Next* to open the Local Directory or ISO view.
- 6 In the *Path to Directory or ISO Image* field of the Local Directory or ISO view, select *ISO Image*, browse to the path where you copied the ISO image file, then click *Next*.

Adding an ISO or Web URL As An Installation Source in YaST

To add an `.iso` file or Web URL as an installation source in YaST,

- 1 Log in to the target SLES 10 server as root, then open YaST2.
- 2 In the YaST Control Center, click *Software*, then click *Installation Source* to display the Configured Software Catalogs view.
- 3 In the Configured Software Catalogs view, then click *Add* to open the Media Type view.
- 4 In the Media Type view, select an installation media type.
 - 4a (Example) If you extracted the ISO image to a Web Server or FTP Server, select *HTTP* (or *FTP*), then click *Next* to open the Server and Directory view.
 - 4b In the *Server Name* field of the Server and Directory view, enter the Server Name (IP Address or DNS Name), in the *Directory on Server Field*, enter the directory name where you extracted the ISO, then click *Next*.

Upgrading ZENworks Orchestrator Server Packages at the Command Line

To prepare for the upgrade, download the appropriate PlateSpin Orchestrate 2.0.2 ISO (32-bit or 64-bit), then prepare it for installation:

- ♦ (Optional) Burn a DVD of the ISO image, mount the DVD, then extract the contents of the `.iso` folder to the local file system of the server.
- ♦ (Optional) Extract the contents of the `.iso` folder to the local file system of the server.

Use the following procedure if you want to use the `rug` command on the SLES server to upgrade the ZENworks Orchestrator packages to PlateSpin Orchestrate packages.

IMPORTANT: A known problem in the pattern and package versioning of SLES generates a list of patterns that are upgraded (in this case, to version 2.0.2) but the subordinate packages might still appear to be ZENworks Orchestrator 1.3 patterns. Some upgrade packages might also be missing from the list. The following steps are mandatory to ensure that the correct packages are upgraded.

- 1 At the command line, change to the directory where the Orchestrator `.iso` folder was extracted, then run the following command:

```
rug sa -t zypp "http://<ip_address_of_local_server>/  
<directory_location_of_iso_files>"
```

NOTE: If you have chosen not to extract the files and you want to use the `.iso` image to upgrade, use the following command in this step:

```
rug sa -t zypp "iso:///?iso=$ISO_FILE_NAME&url=dir:/// $PATH_TO_ISO/"
```

For example, for the ISO located at `/root/Desktop/PlateSpin_Orchestrator-2.0.2.x86_64.iso`, you could use this command:

```
rug sa -t zypp "iso:///?iso=PlateSpin_Orchestrator-  
2.0.2.x86_64.iso&url=dir:///root/Desktop/"
```

NOTE: If you are using an ftp server, extract the contents of the `.iso` to a folder, use the following command:

```
"ftp://<ip_address_of_local_server>/<directory_location_of_iso_files>"
```

- 2 Run the following command to subscribe to the PlateSpin catalog:

```
rug sub platespin
```

- 3 Run command to list the upgrade packages so you can visually confirm them:

```
rug lu
```

- 4 Run the following command to upgrade the ZENworks Orchestrator Server to a PlateSpin Orchestrator Server:

```
rug up
```

Remember to type `y` (yes) when you are asked if you want to proceed with the upgrade transaction.

- 5 Repeat [Step 1](#) through [Step 4](#) for every server that needs to be upgraded.

- 6 From the command line of machine where you ran the `rug up` command, use the following command to bypass the 1.3 patterns that are not part of the upgrade:

```
patterns_to_upgrade=$(rug --terse pt -i | grep zw | grep -v warehouse |  
grep -v orch_config | cut -d'|' -f2)
```

The `vmwarehouse` and `orch_config` patterns are avoided in the upgrade.

- 7 Run the following command to install the patterns that are to be upgraded:

```
rug in -t pattern $patterns_to_upgrade -y
```

2.1.6 Removing Obsolete and Unneeded ZENworks Orchestrator Patterns

After you upgrade ZENworks Orchestrator 1.3 packages to PlateSpin Orchestrate 2.0.2 packages, you need to manually remove the obsolete patterns and packages that remain after the upgrade.

- 1 On the machine where the ZENworks Orchestrator 1.3 VM Warehouse is installed, run the following command:

```
rug rm -t pattern zw_vm_warehouse -y
```

A system message is displayed:

```
The following packages will be removed:
  zw_vm_warehouse 1.3-0 (system)
```

- 2 Run the following command to remove the remainder of the VM Warehouse component:

```
rug rm novell-zenworks-vmwarehouse-base novell-zenworks-vmwarehouse-
cimproviders -y
```

A system message is displayed:

```
The following packages will be removed:
  novell-zenworks-vmwarehouse-base 1.3.0-46 (system)
  novell-zenworks-vmwarehouse-cimproviders 1.3.0-27 (system)
```

- 3 Because the Monitoring Server in PlateSpin Orchestrate must now be installed on the same machine with the Orchestrate Server, you need to remove it from its own server and install it on the Orchestrate Server machine. Run the following command from the command line of the Monitoring Server machine to stop the monitoring function:

```
/etc/init.d/novell-gmetad stop
```

- 4 Use the following command to remove the Monitoring Server pattern:

```
rug rm -t pattern zw_mon_server -y
```

A system message is displayed:

```
The following packages will be removed:
  zw_mon_server 1.3-0 (system)
```

- 5 Use the following command to remove the remainder of the Monitoring component on this machine:

```
rug rm novell-zenworks-monitor-gmetad novell-zenworks-monitor-web -y
```

A system message is displayed:

```
The following packages will be removed:
  novell-zenworks-monitor-gmetad 3.0.4-44 (system)
  novell-zenworks-monitor-web 3.0.4-44 (system)
```

Make sure you install the monitoring components on the Orchestrate Server after you have removed Monitoring from its own machine. For more information, see “[Installation and Configuration Steps](#)” in the *PlateSpin Orchestrate 2.0 Installation and Configuration Guide*.

2.1.7 Revising An Outdated, Required .conf File

After you upgrade from ZENworks Orchestrator 1.3 to PlateSpin Orchestrate 2.0.2, the `ganglia-auth.conf` file (located in the `/etc/apache2/conf.d` directory), created when the original installation configuration script ran, is not upgraded.

Because this version 1.3 file is necessary for the monitoring function, and because it is not updated with the other files in the rpm, you need to change it manually to be compatible with the 2.0.2 system.

The contents of the 1.3 are as follows:

```
Alias /monitor /var/opt/novell/zenworks/monitor/htdocs
<Directory /var/opt/novell/zenworks/monitor/htdocs>
    Order Allow,Deny
    Allow from all

    AuthType Basic
    AuthName Monitoring

    <IfDefine !DCA-NOLDAP>
        AuthBasicProvider ldap
AuthLDAPURL ldaps:///
        AuthzLDAPAuthoritative on

require ldap-group
</IfDefine>

<IfDefine DCA-NOLDAP>
    AuthBasicProvider file
    AuthUserFile /opt/novell/zenworks/monitor/web/user.dat
    AuthGroupFile /opt/novell/zenworks/monitor/web/grpfile.dat

    require group DCA-monitoring
</IfDefine>
</Directory>
```

You need to replace this information with the following:

```
Alias /monitor /var/opt/novell/zenworks/monitor/htdocs
<Directory /var/opt/novell/zenworks/monitor/htdocs>
    Order Allow,Deny
    Allow from all
</Directory>
```

This content is compatible with the 2.0.2 Orchestrate system.

When you have made the change, you need to restart the Apache 2 server using the `rcapache2 restart` command.

2.1.8 Running Discover on VM Images

Because many new facts have been added to PlateSpin Orchestrate VMs for version 2.0.2, it is necessary to re-discover all of the VMs in the grid so that the new facts are added to the VMs.

To do this from the Orchestrate Development Client tools menu, click *Provision > Discover VM Images*, select the Provisioning Adapter you want to run for the discovery, then click OK.

2.1.9 Checking the Upgraded Version of the Orchestrate Server

After you upgrade the ZENworks Orchestrator packages to PlateSpin Orchestrate 2.0.2, you should check the upgraded software packages to confirm that all of the earlier versions of the product components are now updated and which of the non-Novell packages have been updated.

To do this, change to the directory where the current version of PlateSpin Orchestrate was extracted, then run the following command:

```
rpm -qa | grep 'novell-zen'
```

Compare the results of this command with the results you had with the check you performed before the upgrade (see [Section 2.1.3, “Checking the Current Version of ZENworks Orchestrator,” on page 16](#)). If some of the components have not been upgraded from the earlier version, the incompatibility between the components could cause unexpected behavior.

2.1.10 Configuring the Upgraded Server Packages

You can use one of two information gathering methods to configure upgraded PlateSpin Orchestrate packages:

- ♦ [“Running the PlateSpin Orchestrate Product Configuration Script to Configure the Upgraded Packages” on page 24](#)
- ♦ [“Running the GUI Configuration Wizard to Configure the Upgraded Packages” on page 26](#)
- ♦ [“Manually Configuring the Remote Audit Database after PlateSpin Orchestrate Is Upgraded” on page 31](#)

Running the PlateSpin Orchestrate Product Configuration Script to Configure the Upgraded Packages

If you decide to use the product configuration script to configure the upgraded PlateSpin Orchestrate packages, follow these steps:

- 1 Make sure you are logged in as `root` to run the configuration script.
- 2 Run the script, as follows:

```
/opt/novell/zenworks/orch/bin/config
```

When the script runs, the Install or Upgrade option is displayed as follows::

```
Welcome to PlateSpin Orchestrate.
```

```
This program will configure PlateSpin Orchestrate 2.0.2
```

```
Select whether this is a new install or an upgrade
```

```
i) install
u) upgrade
- - - - -
```

```
Selection [install]:
```

- 3 Enter `u` to select the option to upgrade to PlateSpin Orchestrate.

Depending on which components were installed, the script displays the products to upgrade

```
Select products to upgrade
```

```
#  selected  Item
1)   yes    PlateSpin Orchestrate Monitoring Service
2)   yes    PlateSpin Orchestrate Server
3)   yes    PlateSpin Orchestrate Agent
4)   yes    PlateSpin Orchestrate VM Builder
```



```
Select from the following:
 1 - 4) toggle selection status
      a) all
      n) none
      f) finished making selections
      q) quit -- exit the program
```

```
Selection [finish]:
```

- 4 Select the products you want to upgrade either by entering their individual product numbers (1-5) or by entering a to select all of the products for upgrade.

NOTE: We recommend that you upgrade all listed components at the same time. Although you can upgrade the packages one at a time, there is no need to do so. An upgrade of all the installed packages at the same time has been thoroughly tested.

If you upgrade any package separately, however, we recommend that you do not run the upgrade script again. Doing so might have unexpected results.

- 5 Enter f to finish the selection and begin the configuration.

The script displays the following:

```
Gathering information for upgrading PlateSpin Orchestrate Server . . .
```

```
Select whether this is a standard or high-availability server
```

```
s) standard
```

```
h) ha
```

```
- - - - -
```

```
Selection [standard]:
```

- 6 Enter s for the standard server (for information about upgrading a high-availability configuration, see [Section 2.8, “Upgrading a ZENworks Orchestrator 1.3 High Availability Configuration,”](#) on page 48).

The following section of the upgrade script is displayed:

```
Enter the name of the PlateSpin Orchestrate administrator user
previously defined when you configured that server.
```

- 7 Type the name of the administrator, then press Enter.

- 8 Type the administrator password, then press Enter.

- 9 Retype the administrator password, then press Enter.

The following section of the script is displayed:

```
If you've enabled auditing, you will need to upgrade the DB schema.
```

```
If you use a PostgreSQL database, you can upgrade it at this time.
```

```
If you use a different RDBMS, you will have to configure it separately.
```

```
You must supply the same DB connection information provided when the
```

```
audit DB was initially created.
```

```
Upgrade Audit DB (y/n) [no]:
```

- 10 Enter y to upgrade the audit database.

The following section of the script is displayed:

```
Specify the JDBC URL used previously to connect to the audit database.  
Do not include a database name after the trailing slash.
```

```
JDBC URL [jdbc:postgresql://localhost:5432/]:
```

- 11 Enter the appropriate database URL.

The following section of the script is displayed:

```
Specify the database name used previously to create to the audit database.  
Audit Database Name [zos_db]:
```

- 12 Enter the previously specified database name.
- 13 Type the name of the PostgreSQL audit database user previously created, then press Enter.
- 14 Type the audit database user password, then press Enter.
- 15 Retype the audit database user password, then press Enter.

The remainder of the upgrade interview is nearly identical to the installation interview. For more information about the questions gathered during this interview that are added to the configuration script, see “[PlateSpin Orchestrate Configuration Information](#)” in the *PlateSpin Orchestrate 2.0 Installation and Configuration Guide*.

The Orchestrator Server automatically starts at the end of a successful upgrade configuration process.

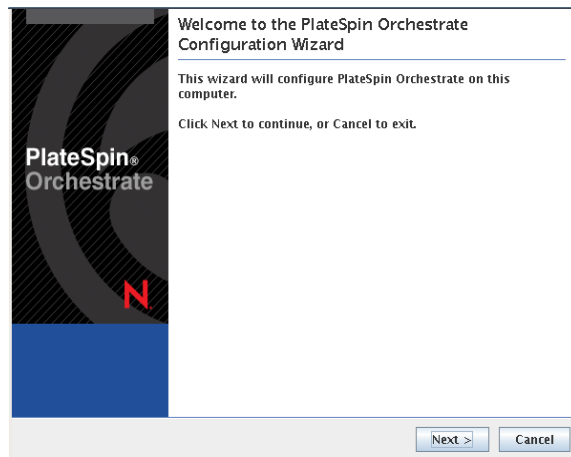
Running the GUI Configuration Wizard to Configure the Upgraded Packages

If you decide to use the GUI Configuration Wizard to configure the upgraded Orchestrator packages, follow these steps:

- 1 Run the script for the PlateSpin Orchestrate Configuration Wizard as follows:

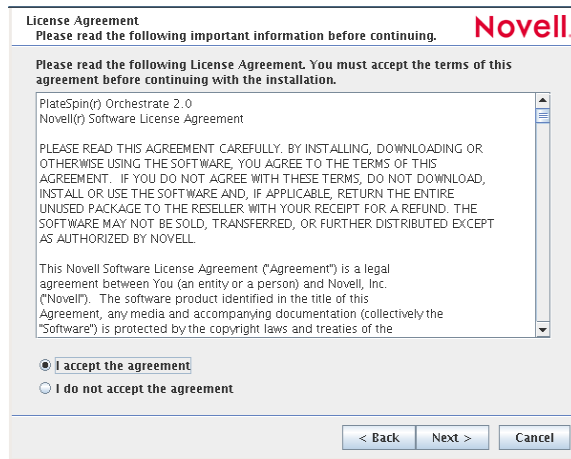
```
/opt/novell/zenworks/orch/bin/guiconfig
```

The GUI Configuration Wizard launches.

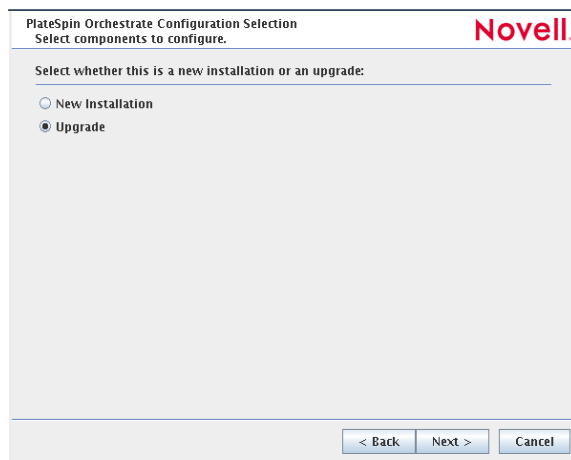


IMPORTANT: If you only have a keyboard to navigate through the pages of the GUI Configuration Wizard, use the Tab key to shift the focus to a control you want to use (for example, a *Next* button), then press the spacebar to activate that control.

2 Click *Next* to display the license agreement.

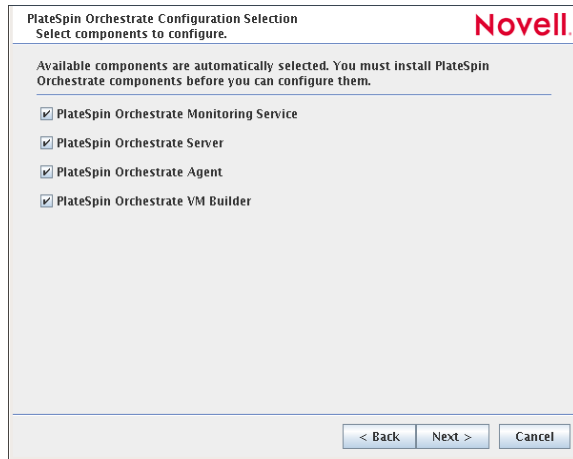


3 Accept the agreement, then click *Next* to display the PlateSpin Orchestrate Configuration Selection page.



4 Select *Upgrade*, then click *Next* to display the PlateSpin Orchestrate components page.

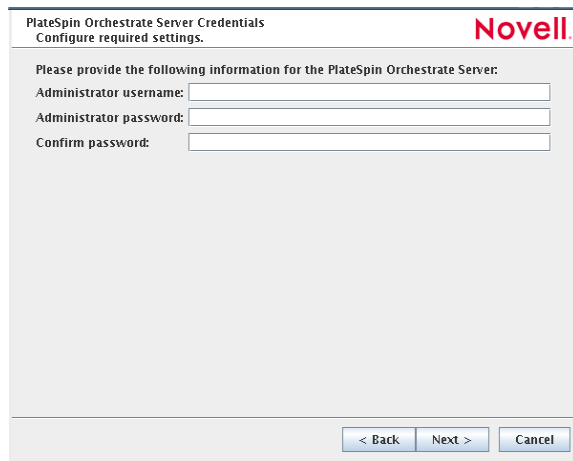
This page lists the components that are available for configuration. By default, all installed components are selected for configuration.



- 5 Deselect any PlateSpin Orchestrator components that you do not want to upgrade, then click *Next* to open the wizard page where you choose to configure the server for a High Availability clustered environment.

NOTE: You might not want to upgrade all components. For example, you might want to keep an older version of the Orchestrator Agent installed on an Orchestrator Server machine when the agent is used to connect to a different (that is, a non-upgraded) Orchestrator server, such as in a “grid-of-grids” configuration.

- 6 Click *Next* on the High Availability page to open the wizard page where you can begin configuring required settings.



(This example does not demonstrate configuring the server for a High Availability environment)

- 7 Fill in the fields as needed for each of the configuration pages.

Administrator username: Enter the name of the PlateSpin Orchestrator administrator used in the previous installation (for ZENworks Orchestrator 1.3).

Administrator password: Enter the administrator password.

Confirm password: Re-enter the administrator password.

- 8 Click *Next* to display the required settings page of the wizard.

PlateSpin Orchestrate Server
Configure required settings. Novell.

If you have a new license file with your upgrade, browse for or enter the full path to the license file. Otherwise the previously installed license file will be used (default).

License file:

The Agent port is used for communication between the PlateSpin Orchestrate Server and Agents.
Agent port:

The User Portal port provides access to a web-based management portal that enables users to submit and inspect the status of their jobs.
User Portal port:

The Administrator Information port serves access to a web page that has links to documentation, tools reference, PlateSpin Orchestrate Agent and Client installers.
Admin Info port:

Upgrade audit database

If you need clarification for the data to enter into the fields of the configuration pages, refer to the table in “[PlateSpin Orchestrate Configuration Information](#)” section of the *PlateSpin Orchestrate 2.0 Installation and Configuration Guide*.

Make sure you provide the path to the new PlateSpin Orchestrate license file during the configuration.

Default values are built into the script; most of these defaults are set to configure all of the product patterns that were installed using the Add-on Product Media utility.

If an error is displayed during the configuration process, the script or wizard stops the configuration and does not proceed.

- 9 Click *Next* to display the next page of the wizard.

(Conditional) If you did not select the *Upgrade audit database* checkbox in the previous step, the following page of the wizard is displayed:

PlateSpin Orchestrate Configuration Summary
Review and accept component settings. Novell.

Configure now

Component configurations to upgrade:

- PlateSpin Orchestrate Monitoring Service
- PlateSpin Orchestrate Server
- PlateSpin Orchestrate Agent

Response file:

Proceed to **Step 11**.

If you selected the *Upgrade audit database* checkbox in the previous step, the following page of the wizard is displayed.

PlateSpin Orchestrate Server
Configure audit database settings. Novell

Enter the JDBC URL to connect to the Auditing database, with a trailing slash but without a database name at the end.

Audit Database URL:

Supply a name for the existing Audit Database.

Database name:

PlateSpin Orchestrate will use these credentials to login to the Audit Database.

Audit Database username:

Audit Database password:

Enter password again to verify:

Proceed to [Step 10](#).

- 10 Specify the required information to configure the upgrade for the audit database:

Audit Database URL: Specify the URL for the existing PostgreSQL audit database so that its schema can be upgraded.

NOTE: If you have been using a different RDBMS (that is, not PostgreSQL) for your audit database, you will have to configure it separately.

Database name: Specify the name of your existing database.

Audit Database username: Specify the existing database username.

Audit Database password: Specify the existing database user password.

Enter password again to verify: Re-enter the existing database user password to verify its authenticity.

- 11 Click *Next* to display the Configuration Summary page of the configuration wizard.

IMPORTANT: Although this page of the wizard lets you navigate using the Tab key and Spacebar, you need to use the Shift+Tab combination to navigate past the summary list. Click *Back* if you accidentally go to the summary list, then re-enter the page to navigate to the control buttons.

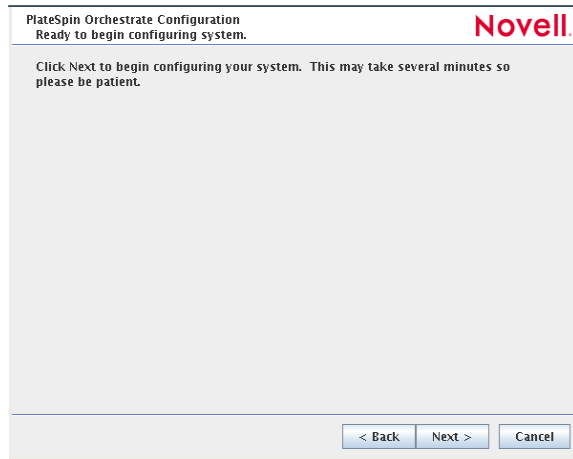
By default, the *Configure now* check box on this page is selected. If you accept the default, the wizard starts PlateSpin Orchestrate and applies the configuration settings.

If you deselect the check box, the wizard writes the configuration file to `/etc/opt/novell/novell_zenworks_orch_install.conf` without starting PlateSpin Orchestrate or applying the configuration settings.

You can use this `.conf` file to start the Orchestrator server or client and apply the settings either manually or with an installation script. Use the following command to run the configuration:

```
/opt/novell/zenworks/orch/bin/config -rs
```

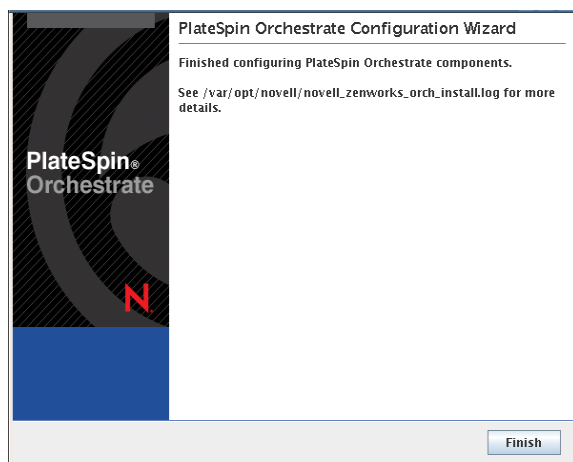
- 12 Click *Next* to display a message asking whether you want to overwrite the `.conf` response file.
- 13 To upgrade, you need to overwrite the existing file. When prompted, click *Yes* to overwrite the file and display the configuration page.



14 Click *Finish* to dismiss the configuration wizard.

15 Click *Next* to begin the upgrade configuration for the PlateSpin Orchestrator Service.

When the configuration is complete, the Finish page of the configuration wizard is displayed.



The Orchestrator Server automatically starts at the end of a successful configuration process.

Manually Configuring the Remote Audit Database after PlateSpin Orchestrator Is Upgraded

When you have upgraded PlateSpin Orchestrator, you can manually configure the existing audit database using the `audit_db_upgrade.sql` script. This script creates an `actions` table in the database. Use the following procedure to manually upgrade the audit database:

- 1** On the PlateSpin Orchestrator host machine, use your favorite editor to edit the script `/opt/novell/zenworks/zos/server/conf/audit_db_upgrade.sql`.
 - 1a** Replace the `${DB_NAME}` variable with the PostgreSQL database name (for example, `zos_db`).
 - 1b** Replace the `${DB_USER}` variable with the PostgreSQL schema owner name (for example, `zos`).

- 2 Use the following commands to run the modified script as the PostgreSQL database administrator for the remote database:

```
su - postgres
```

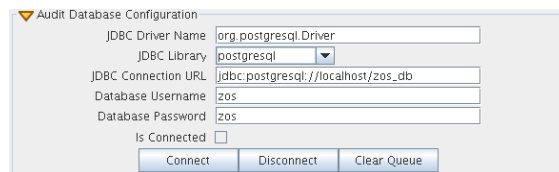
```
psql -h <psql-server-addr> -d postgres -U postgres -f audit_db_upgrade.sql
```

- 3 Use the following command to log into PostgreSQL, using the database name and schema owner substituted in Step 1 above:

```
su - postgres
```

```
psql -h <psql-server-addr> -d zos_db -U zos -f audit_db_upgrade.sql
```

- 4 Confirm that the database username and password match the values used when creating the schema owner database user in “[Creating a PlateSpin Orchestrate User for the PostgreSQL Database](#)” in the *PlateSpin Orchestrate 2.0 Installation and Configuration Guide*. In this example, the username is `zos` and the password is `zos`.



- 5 Confirm that the database username and password match the values you replaced in the variables of the `.sql` script. In this example, the username is `zos` and the password is `zos`.
- 6 Click *Connect*.

The *Is Connected* check box is selected: the Orchestrate Server is connected to the database so that any queued data and subsequent job, user, and resource events are written there.

2.2 Orchestrator Components That Are Not Upgraded

When you upgrade from the ZENworks Orchestrator Server to PlateSpin Orchestrate, the core components are not upgraded or redeployed. Instead, the old core components are replaced with new core PlateSpin Orchestrate components. If, however, you made any changes to the core components, those changes are saved and you can manually re-enter the configuration you want after the upgrade.

For example, suppose you have deployed the Xen* provisioning adapter job and you made custom changes to the `xen30` policy file. When the Orchestrator Server prepares for an upgrade, it repackages the Xen provisioning adapter by creating a `.sar` archive and then stores it in `/Orchestrator_instance_directory/snapshot/deployment/core/xen.sar`. This `xen.sar` archive contains the current state of the Xen provisioning adapter, including your custom changes.

Later, when the Orchestrator server is upgraded, the new Xen provisioning adapter for the new server is deployed, but the changes you made previously are not applied. To apply these changes to the new server, you have two choices:

- ♦ Use the PlateSpin Orchestrate Development Client to manually apply the changes to the new server's core component. (You can review what these changes were by looking at the snapshot files in the `xen.sar` archive.)
- ♦ (Conditional) If you are migrating between servers of the same version whose core components have not changed, you can use the `zosadmin redeploy` command to manually redeploy the snapshotted core component.

2.3 Recovering from a Failed Orchestrator Server Upgrade

It is possible that the upgrade process could have problems. If this should occur, we suggest you follow these general steps to recover from those errors and “roll back” to the previous version of ZENworks Orchestrator.

- ♦ [Section 2.3.1, “Failure Scenario 1: Error Resolution,” on page 33](#)
- ♦ [Section 2.3.2, “Failure Scenario 2: Cannot Resolve Error,” on page 33](#)

2.3.1 Failure Scenario 1: Error Resolution

Follow these steps if you can resolve the error.

- 1 Open the upgrade log file to learn about the reason for the error, then resolve it.
- 2 Re-run the configuration

2.3.2 Failure Scenario 2: Cannot Resolve Error

Follow these steps if you cannot resolve the error:

- 1 Remove the new instance directory for the Orchestrator server, not including the datagrid.
- 2 Copy the old instance directory `/var/opt/novell/zenworks/zos.bak` to restore the Orchestrator Server data from the snapshot.
- 3 Restore the previous version RPMs of the ZENworks Orchestrator software.

2.4 Restoring ZENworks Orchestrator If the Upgrade Fails

If you use ZENworks Linux Management in your network, you can use it to restore an older version of the ZENworks Orchestrator Server if an upgrade has failed. This section contains information that can help you roll back a failed upgrade of PlateSpin Orchestrate 2.0 back to ZENworks Orchestrator 1.3.

- ♦ [Section 2.4.1, “Requirements,” on page 34](#)
- ♦ [Section 2.4.2, “Rollback Procedure,” on page 34](#)

2.4.1 Requirements

This scenario requires that you have already installed the ZENworks Orchestrator 1.3 ISO. That is, the 1.3 version of the Orchestrator Server should be running with exactly the same packages you originally installed and configured.

The scenario also requires that you have a PlateSpin Orchestrate 2.0 ISO on hand. It is important that you enable rollback through ZENworks Linux Management before you actually execute the rollback. ZENworks Linux Management records the changes you make to the RPM database when you enable rollback.

Rollback works only if you previously installed ZENworks Orchestrator packages using ZENworks Linux Management. ZENworks Linux Management records data about each package that it installs, deletes, or upgrades.

For more information about using ZENworks Linux Management for rollback, see [Reverting to a Previously Installed Software Configuration State](http://www.novell.com/documentation/zlm72/lm7admin/index.html?page=/documentation/zlm72/lm7admin/data/b94fftd.html) (<http://www.novell.com/documentation/zlm72/lm7admin/index.html?page=/documentation/zlm72/lm7admin/data/b94fftd.html>) in the *ZENworks 7.2 Linux Management Administration Guide*.

2.4.2 Rollback Procedure

Use the following steps to roll back a PlateSpin Orchestrate 2.0 upgrade to ZENworks Orchestrator 1.3

- 1** Make sure that you have the ZENworks Management Daemon installed, with rollback tools enabled.

```
rug get rollback
```

- 2** Check repositories to ensure that they are disabled. You want only ZENworks Orchestrator upgrades.

- 2a** Run the following command to list the repositories:

```
rug sl
```

- 2b** Run the following command to list the catalogs of subscribed repositories:

```
rug ca
```

- 2c** Run the following command to unsubscribe from each subscribed repository:

```
rug unsub "<name_of_repository>"
```

- 3** Add a ZENworks Orchestrator 1.3 Server ISO as a repository.

- 3a** Run the following command, followed by the local path of the ISO, the ftp or http addresses, or the path to the CD or DVD media where the installation source of ZENworks Orchestrator 1.3 currently resides.

```
rug sa -t zypp <installation_source_of_Orchestrator_1.3_Server> zos13
```

This command adds the Orchestrator 1.3 repository to the ZENworks Management Daemon. The daemon uses the RPMs in the repository to roll back the server to its former state. For this reason, the repository (the `zos13` shown in the example) must have the same RPM package versions as ZENworks Orchestrator 1.3.

For more information about adding repositories, see the *ZENworks 7.2 Linux Management Administration Guide* (<http://www.novell.com/documentation/zlm72/lm7admin/data/front.html>).

- 3b** Run the following command to list and confirm existing repositories:
- ```
rug sl
```
- 3c** Run the following command to list and confirm the catalogs of subscribed repositories:
- ```
rug ca
```
- 4** Subscribe to the `zos13` repository.
- 4a** Run the following command to subscribe to the `zos13` repository:
- ```
rug sub zos13
```
- 4b** Run the following command to list the catalogs and confirm the catalogs of subscribed repositories:
- ```
rug ca
```
- The new repository shows `Yes` in the `Sub'd` (subscribed) column.
- 4c** Run the following command to list and confirm updates:
- ```
rug lu
```
- The message, `No updates are available`, is displayed, which indicates that no new updates to the repository are available—the RPMs match those in the `zos12` catalog.
- 5** Add a PlateSpin Orchestrate 2.0 Server ISO as a repository.
- 5a** Run the following command, followed by the local path of the ISO, the ftp or http addresses, or the path to the CD or DVD media where the installation source of PlateSpin Orchestrate 2.0.2 currently resides.
- ```
rug sa -t zypp <installation_source_of_PS_Orchestrate_2.0.2_Server>
pso20
```
- This command adds the PlateSpin Orchestrate 2.0 repository to the ZENworks Management Daemon. The daemon uses the RPMs in the repository to roll back the server to its former state. For this reason, the repository (the `pso20` shown in the example) must have the same RPM package versions as PlateSpin Orchestrate 2.0.2.
- For more information about adding repositories, see the *ZENworks 7.2 Linux Management Administration Guide* (<http://www.novell.com/documentation/zlm72/lm7admin/data/front.html>).
- 5b** Run the following command to list and confirm existing repositories:
- ```
rug sl
```
- 5c** Run the following command to list and confirm the catalogs of subscribed repositories:
- ```
rug ca
```
- 6** Subscribe to the `pso20` repository.
- 6a** Run the following command to subscribe to the `pso20` repository:
- ```
rug sub pso20
```
- 6b** Run the following command to list the catalogs and confirm the catalogs of subscribed repositories:
- ```
rug ca
```
- The new repository shows `Yes` in the `Sub'd` (subscribed) column for both the `zos13` and `pso20` repositories.

- 6c** Run the following command to list and confirm the updated PlateSpin Orchestrate 2.0.2 packages:

```
rug lu
```

- 7** Run the following command to verify that the Orchestrator Server and the Orchestrator Agent are in a running state:

```
ps ax | grep java
```

- 8** Run the following command to perform the package upgrade (while the server is in a running state).

```
rug up
```

The upgrade scripts of the PlateSpin Orchestrate 2.0 RPM packages stop the Orchestrator Server and the Orchestrator Agent before the upgrade, then take a snapshot of the Orchestrator Server that is required for the upgrade.

- 9** When the package upgrade is complete, run the following command to launch the configuration script to upgrade the Orchestrator Server.

```
/opt/novell/zenworks/orch/bin/config
```

NOTE: For details on running the configuration script, see “[Installation and Configuration Steps](#)” in the *PlateSpin Orchestrate 2.0 Installation and Configuration Guide*.

If the upgrade configuration fails, error information is displayed in the terminal.

Because of the configuration upgrade failure, you need to use the ZENworks Management Daemon to roll back to the former (that is, the ZENworks Orchestrator 1.3) running state without losing data.

- 10** Run the following command to confirm that PlateSpin Orchestrate 2.0 packages are installed:

```
rpm -qa | grep zos
```

Because the 2.0.2 packages are installed but not configured, you cannot use them to start the Orchestrate Server.

- 11** Run the follow command to confirm that an instance of the Orchestrate Server was created:

```
ls /var/opt/novell/zenworks/zos/
```

The agent, server and server.save folders should be listed.

- 12** Run the following command to launch the ZENworks Linux Management (that is, the ZENworks Management Daemon) for rolling back to ZENworks Orchestrator 1.3.

```
rug ro 1 hour ago
```

NOTE: The rollback parameter, `1 hour ago`, is conditional: it specifies the state of the packages on the SLES server at a given time in the past. You need to specify the time when you are sure that Orchestrator 1.3 packages were installed and running so that you can roll back the current Orchestrate 2.0 packages to Orchestrator 1.3 packages.

- 13** Run the following commands to confirm that the system has been rolled back to version 1.3 and that a server instance exists:

```
rpm -qa | grep zos
```

```
ls /var/opt/novell/zenworks/zos/
```

- 14 Run the following command to start the ZENworks Orchestrator and ZENworks Orchestrator Agent:

```
/etc/init.d/novell-zosagent start
```

2.5 Upgrading the ZENworks Orchestrator Agents and Clients

It is likely that you have installed ZENworks Orchestrator Agents and Orchestrator Clients on machines other than where the ZENworks Orchestrator Server components were installed. This section includes information that helps you to walk through the upgrade of those agents and clients.

- ◆ [Section 2.5.1, “Checking the Current Version of the Orchestrator Agent,” on page 37](#)
- ◆ [Section 2.5.2, “Backing Up the Orchestrator Agent Prior to Upgrading,” on page 38](#)
- ◆ [Section 2.5.3, “Automatically Upgrading the Orchestrator Agent from the Orchestrator Development Client,” on page 38](#)
- ◆ [Section 2.5.4, “Using the Product ISO to Upgrade Agents and Clients on a SLES 10 SP1 Machine,” on page 38](#)
- ◆ [Section 2.5.5, “Using the ISO to Upgrade the Orchestrator Agent and Clients on Red Hat Enterprise Linux 4 Machines,” on page 45](#)
- ◆ [Section 2.5.6, “Using the ISO to Upgrade the Orchestrator Agent on Red Hat Enterprise Linux 5 Machines,” on page 46](#)
- ◆ [Section 2.5.7, “Using the ISO to Upgrade the Orchestrator Agent or the Orchestrator Clients on Windows Machines,” on page 47](#)
- ◆ [Section 2.5.8, “Using the Administrator Information Page to Upgrade the Agents and Clients,” on page 47](#)

NOTE: To perform a mass upgrade of ZENworks Orchestrator Agents we recommend that you use a reputable application software distribution method to upgrade to the newer versions that ship with PlateSpin Orchestrator 2.0. For example, you can use ZENworks Linux Management to distribute new agents and clients to Linux servers.

For more information, see [Section 2.7, “Running the Upgrade Configuration on an Enterprise Scale,” on page 48](#).

2.5.1 Checking the Current Version of the Orchestrator Agent

Before you upgrade the ZENworks Orchestrator Agent packages from an earlier version to the current PlateSpin Orchestrator version, you should check which packages of the older Orchestrator version need to be upgraded and which non-Novell packages are included in the product packages.

To do this, change to the directory where the current version of the Orchestrator `.iso` was extracted, then run the following command:

```
rpm -qa | grep 'novell-zen'
```


We recommend that you record the results of this command so that you can compare it with the results of a similar task following the upgrade (see

2.5.2 Backing Up the Orchestrator Agent Prior to Upgrading

As with the installation of any software, it is always a wise precaution to back up a working copy of ZENworks Orchestrator 1.3 Agent directories before you install the newer version, such as PlateSpin Orchestrate 2.0. To back up the old version, copy the `/var/opt/novell/zenworks/zos/agent` directory.

2.5.3 Automatically Upgrading the Orchestrate Agent from the Orchestrate Development Client

The PlateSpin Orchestrate Development Client includes a feature that lets you automatically upgrade older Orchestrate Agents on resources (virtual or physical) that connect to the Orchestrate Server.

If your grid includes older (that is, older than version 2.0.2) Resource objects, their Orchestrate Agents cannot connect to a recently upgraded Orchestrate Server. This is shown when the Resource Registration icon in the Resource Monitor of the Orchestrate Development Client displays a “flag up”  status.

When you click the Resource Registration icon, the Resource Registration Monitor dialog box displays all of the older resource objects attempting to connect. The *Upgrade* option is also available in the dialog box. You can select this option, along with all of the older agents that you want to upgrade.

When you use this automatic upgrade method, only the agent rpm (that is, the `zw_zos_agent` pattern) is upgraded, but other Orchestrate components that might be present on the resource machine are not upgraded. These include the following components (listed by pattern names):

- ◆ `zw_zos_clients`
- ◆ `zw_mon_agent`
- ◆ `zw_vm_builder`

To separately upgrade these components, you need to use the YaST upgrade from the product ISO (see [“Upgrading ZENworks Orchestrator Agent Packages Using YaST” on page 39](#)) or the rug upgrade method (for each component) from the bash prompt ([“Upgrading ZENworks Orchestrator Agent Packages Using the rug Command” on page 40](#)).

2.5.4 Using the Product ISO to Upgrade Agents and Clients on a SLES 10 SP1 Machine

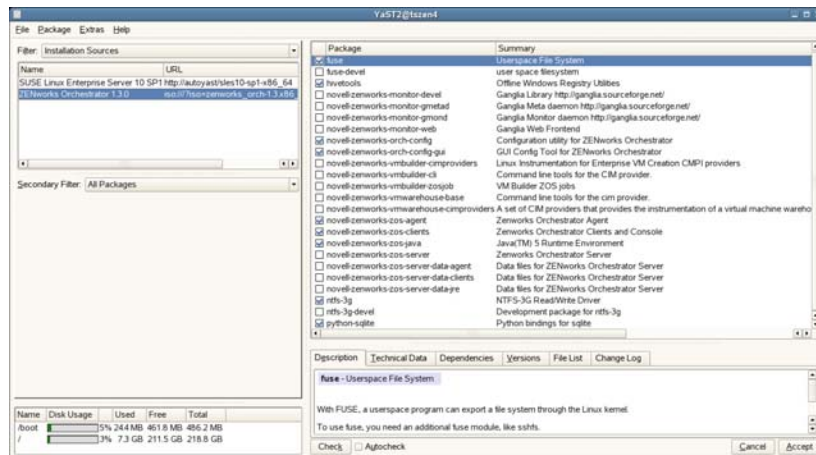
This section includes information about upgrading the agent and client packages on the product ISO.

- ◆ [“Upgrading ZENworks Orchestrator Agent Packages Using YaST” on page 39](#)
- ◆ [“Upgrading ZENworks Orchestrator Agent Packages Using the rug Command” on page 40](#)
- ◆ [“Checking the Upgraded Orchestrate Agent” on page 41](#)
- ◆ [“Configuring the Upgraded Agent Packages” on page 41](#)

Upgrading ZENworks Orchestrator Agent Packages Using YaST

Use the following procedure if you want to use YaST, a graphical user interface, to upgrade the ZENworks Orchestrator packages to PlateSpin Orchestrate packages. If you want to use the command line to upgrade, see [“Upgrading ZENworks Orchestrator Agent Packages Using the rug Command”](#) on page 40.

- 1 Download the appropriate PlateSpin Orchestrate 2.0.2 ISO (32-bit or 64-bit for SLES 10 or SLES 11), then prepare it for installation:
 - ♦ (Optional) Burn a DVD of the ISO image and load it into the DVD drive of the target machine.
 - ♦ (Optional) Copy the ISO image to the local file system. For more information, see [“Adding a Local Mount Point As An Installation Source in YaST”](#) on page 19.
 - ♦ (Optional) Mount the ISO image file on the machine where PlateSpin Orchestrate is to be installed (the “target” machine). For details, see [“Adding a Local Directory As An Installation Source in YaST”](#) on page 20.
 - ♦ (Optional) If you are installing the ISO image to a large network, extract the product files from the ISO image to a web server / ftp server that can be accessed by the target machine without the need for authentication or anonymous login. For details, see [“Adding an ISO or Web URL As An Installation Source in YaST”](#) on page 20.
- 2 Upgrade ZENworks Orchestrator Agent software packages:
 - 2a Log in to the target SLES server as `root`, then open YaST2.
 - 2b In YaST2, open the *Filter* drop-down menu, then select *Installation Sources* to display the install patterns available on the PlateSpin Orchestrate installation media.



Component packages already installed to the server are checked.

- 2c Right-click on any of the installed package names, click *All in This List > Update if newer version available*.
- 2d Click *Accept* to install the upgraded packages.

After the server RPMs are upgraded, the program runs a script that does the following:

- ♦ Stops job activity on the existing agent
- ♦ Backs up the existing agent data to a retrievable format
- ♦ Upgrades the RPMs for the selected PlateSpin Orchestrate patterns

WARNING: The preceding steps have been tested and validated in YaST. Using other methods to update packages in YaST have not proven successful.

- 2e** Run the configuration program on the machine where the agents or clients are installed. You have two options for running the script:
- ♦ Run the PlateSpin Orchestrate product configuration script. If you use this method, continue with the steps in [“Running the Product Configuration Script to Upgrade Agents” on page 41.](#)
 - ♦ Run the GUI Configuration Wizard. If you use this method, skip to the steps in [“Running the GUI Configuration Wizard to Upgrade Agents” on page 42.](#)

Upgrading ZENworks Orchestrator Agent Packages Using the rug Command

Use the following procedure if you want to use YaST, a graphical user interface, to upgrade the ZENworks Orchestrator packages. If you want to use the GUI Configuration Wizard to upgrade, see [“Upgrading ZENworks Orchestrator Agent Packages Using YaST” on page 39.](#)

- 1** Download the appropriate PlateSpin Orchestrate 2.0 ISO (32-bit or 64-bit), then prepare it for installation:
- ♦ (Optional) Burn a DVD of the ISO image, mount the DVD, then extract the contents of the `.iso` folder to the local file system of the server.
 - ♦ (Optional) Extract the contents of the `.iso` folder to the local file system of the server.
- 2** At the command line, change to the directory where the Orchestrator `.iso` folder was extracted, then run the commands to upgrade ZENworks Orchestrator:
- 2a** Run the following command:

```
rug sa -t zypp "http://<ip_address_of_local_server>/
<directory_location_of_iso_files>"
```

NOTE: If you have chosen not to extract the files and you want to use the `.iso` image to upgrade, use the following command in this step:

```
rug sa -t zypp "iso:///?iso=$ISO_FILE_NAME&url=dir:/// $PATH_TO_ISO/"
```

For example, for the ISO located at `/root/Desktop/PlateSpin_Orchestrate-2.0.2.x86_64.iso`, you could use this command:

```
rug sa -t zypp "iso:///?iso=PlateSpin_Orchestrate-
2.0.2.x86_64.iso&url=dir:///root/Desktop/"
```

NOTE: If you are using an ftp server, extract the contents of the `.iso` to a folder, use the following command:

```
"ftp://<ip_address_of_local_server>/
<directory_location_of_iso_files>"
```

- 2b** Run the following command:

```
rug sub platespin
```

- 2c** Run the following command:

```
rug up -y
```


- 3 Configure the PlateSpin Orchestrate Agent. You can use one of two information gathering methods to perform the configuration:
 - ♦ Run the PlateSpin Orchestrate product configuration script. If you use this method, continue with the steps in [“Running the Product Configuration Script to Upgrade Agents” on page 41](#).
 - ♦ Run the GUI Configuration Wizard. If you use this method, skip to the steps in [“Running the GUI Configuration Wizard to Upgrade Agents” on page 42](#).

Checking the Upgraded Orchestrate Agent

After you upgrade the ZENworks Orchestrator 1.3 packages to PlateSpin Orchestrate 2.0.2, you should check the upgraded software packages to confirm that all of the earlier versions of the product components are now updated and which of the non-Novell packages have been updated.

To do this, change to the directory where the PlateSpin Orchestrate 2.0.2 .iso was extracted, then run the following command:

```
rpm -qa | grep 'novell-zen'
```

Compare the results of this command with the results you had with the check you performed before the upgrade (see [Section 2.5.1, “Checking the Current Version of the Orchestrator Agent,” on page 37](#)). If some of the components have not been upgraded from the earlier version, the incompatibility between the components could cause unexpected behavior.

Configuring the Upgraded Agent Packages

You can use one of two information gathering methods to configure upgraded PlateSpin Orchestrate packages:

- ♦ [“Running the Product Configuration Script to Upgrade Agents” on page 41](#)
- ♦ [“Running the GUI Configuration Wizard to Upgrade Agents” on page 42](#)

Running the Product Configuration Script to Upgrade Agents

If you decided to use the product configuration script to upgrade ZENworks Orchestrator Agents and Clients referred to [Step 2e on page 40](#),

- 1 Make sure you are logged in as `root` to run the configuration script.
- 2 Run the script, as follows:

```
/opt/novell/zenworks/orch/bin/config
```

When the script runs, the following information is initially displayed:

```
Welcome to PlateSpin Orchestrate.
```

```
This program will configure PlateSpin Orchestrate 2.0
```

```
Select whether this is a new install or an upgrade
```

```
i) install  
u) upgrade  
- - - - -
```

```
Selection [install]:
```

- 3 Enter `u` to select the option to upgrade to PlateSpin Orchestrate.

The following information is displayed:

Select products to upgrade

```
#  selected  Item
1)    no     PlateSpin Orchestrate Monitoring Service (not installed)
2)    no     PlateSpin Orchestrate Server (not installed)
3)    yes    PlateSpin Orchestrate Agent
4)    no     PlateSpin Orchestrate VM Builder (not installed)
```

Select from the following:

```
1 - 4) toggle selection status
a) all
n) none
f) finished making selections
q) quit -- exit the program
```

Selection [finish]:

- 4 Toggle the items in the list that you want to upgrade to `yes`.
- 5 Enter `f` to finish the selection and begin the configuration.
- 6 Enter `y` or `n` to view or bypass a summary information screen of the configuration you have completed. If you chose to view the summary, you can proceed with the upgrade (by entering `yes`) or abort the upgrade (by entering `no`).

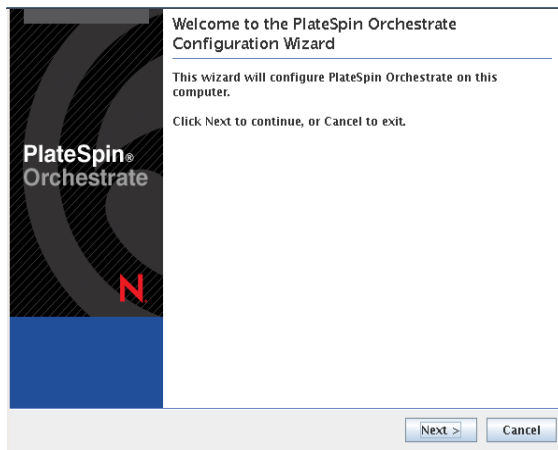
Running the GUI Configuration Wizard to Upgrade Agents

If you decided to upgrade ZENworks Orchestrator Agents and Clients to PlateSpin Orchestrate Agents using the GUI Configuration Wizard referred to in [Step 2e on page 40](#),

- 1 Run the script for the PlateSpin Orchestrate Configuration Wizard as follows:

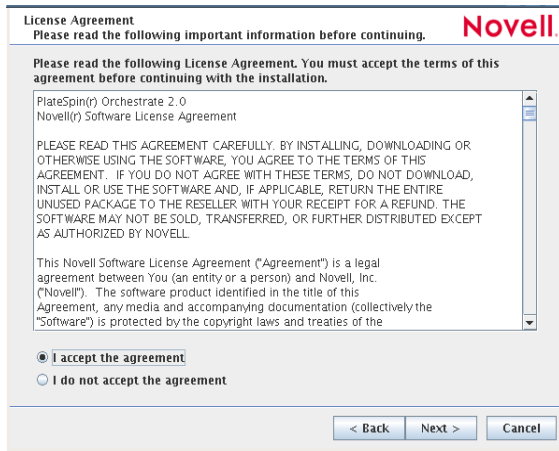
```
/opt/novell/zenworks/orch/bin/guiconfig
```

The GUI Configuration Wizard launches.

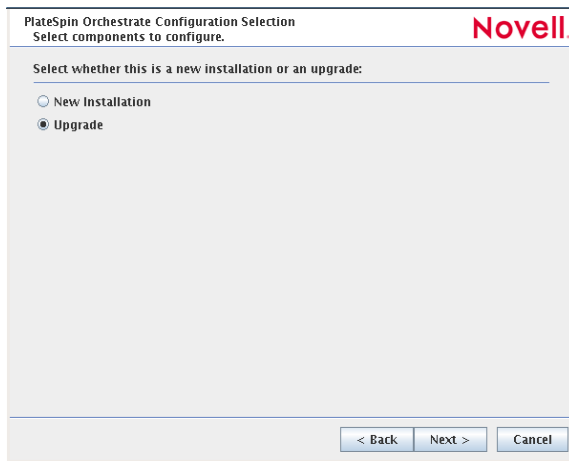


IMPORTANT: If you only have a keyboard to navigate through the pages of the GUI Configuration Wizard, use the Tab key to shift the focus to a control you want to use (for example, a *Next* button), then press the spacebar to activate that control.

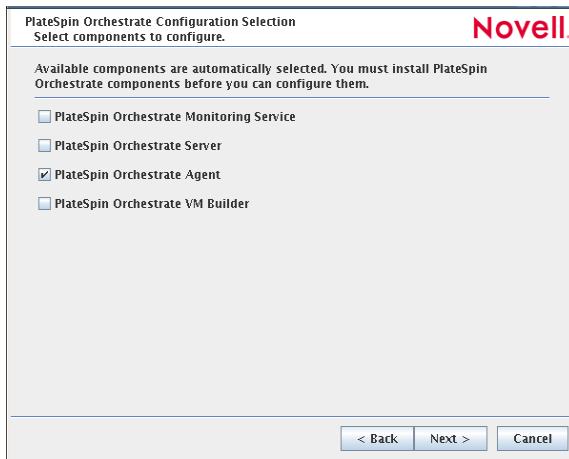
- 2 Click *Next* to display the license agreement.



- 3 Accept the agreement, then click *Next* to display the PlateSpin Orchestrate Configuration Selection page.

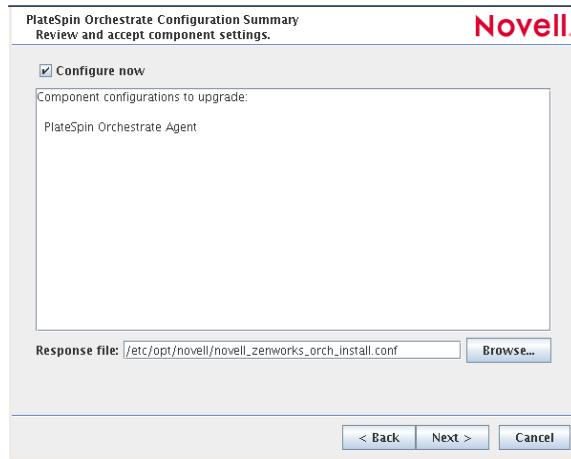


- 4 Select *Upgrade*, then click *Next* to display the PlateSpin Orchestrate components page.



This page lists the components that are available for configuration (already installed). By default, all previously installed components are selected for configuration.

- 5 Select all the agent components you want to upgrade, then click *Next* to display the Configuration Summary page of the configuration wizard.



- 6 Commit the configuration.

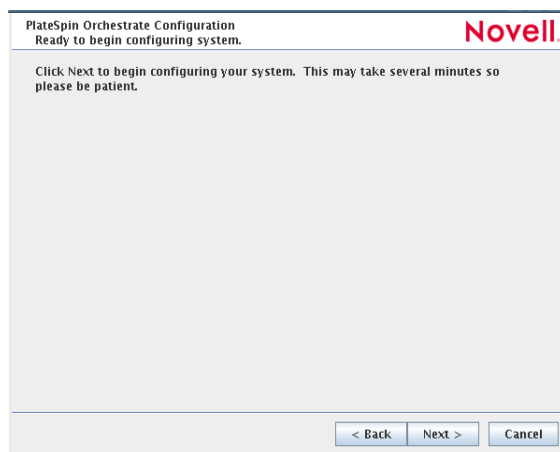
- 6a (Optional) Click *Next* to apply the configuration settings.

- 6b Deselect the *Configure now* check box so that the wizard can write the configuration file to `/etc/opt/novell/novell_zenworks_orch_install.conf` without starting Orchestrator or applying the configuration settings.

NOTE: You can use this `.conf` file to start the Orchestrator Agent and apply the settings either manually or with an installation script. Use the following command to run the configuration:

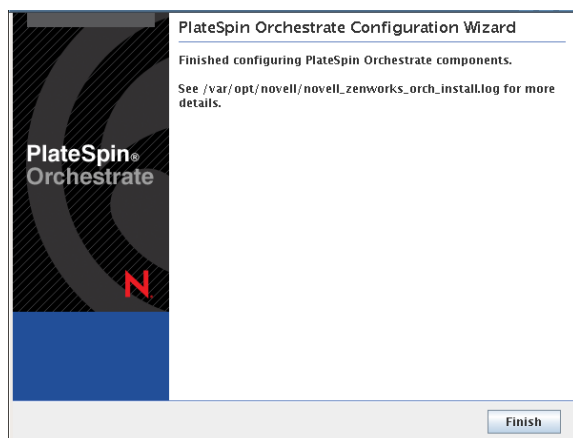
```
/opt/novell/zenworks/orch/bin/config -rs
```

- 7 Click *Next* to display a message asking whether you want to overwrite the `.conf` response file.
- 8 To upgrade, you need to overwrite the existing file. When prompted, click *Yes* to overwrite the file and display the configuration page.



- 9 Click *Finish* to dismiss the configuration wizard.
- 10 Click *Next* to begin the upgrade configuration for the ZENworks Orchestrator Service to the PlateSpin Orchestrator Service.

When the configuration is complete, the Finish page of the configuration wizard is displayed.



2.5.5 Using the ISO to Upgrade the Orchestrator Agent and Clients on Red Hat Enterprise Linux 4 Machines

Use the following procedure if you want to use the Add-on method to install just the Orchestrate Agent and the PlateSpin Orchestrate Monitoring Agent to a Red Hat Enterprise Linux (RHEL) 4 machine.

- 1 Shut down the Orchestrator Console on the machine where you intend to install the new PlateSpin Orchestrate Development Client.
- 2 Download the appropriate PlateSpin Orchestrate Server ISO (32-bit or 64-bit) to an accessible network location.
- 3 Mount the PlateSpin Orchestrate ISO as a loopback device as in the following example:

```
mount -o loop PlateSpin_Orchestrate-2.0.2.x86_64.iso /mnt
```

This mounts the ISO in the /mnt folder.

- 4 Navigate to the directory path where the RHEL 4 packages reside. For example:

```
cd /mnt/RHEL4
```

There are five packages in the /RHEL4 directory (the list below is for a 64-bit ISO):

```
novell-zenworks-monitor-gmond-3.0.4-50.x86_64.rpm  
novell-zenworks-orch-config-2.0.2-141.noarch.rpm  
novell-zenworks-orch-config-gui-2.0.2-57039.noarch.rpm  
novell-zenworks-zos-agent-2.0.2-57039.i586.rpm  
novell-zenworks-zos-java-1.5.0_sun_update17-0.x86_64.rpm
```

- 5 Use the `rpm` command to install the packages:

```
rpm -Uvh *.rpm
```

If you encounter an issue regarding missing dependencies, you can use the `up2date` command to download and install those. For example, if you were missing `libcap1so` or `libcap.so.1`, you would run the following:

```
up2date --solvedeps=libcp.so,libcap.so.1
```

6 (Optional) Increase the heap size that the JVM handles to enable the Orchestrate Development Client to manage a large number of objects.

6a Open the `zoc` bash shell script at `/opt/novell/zenworks/zos/server/bin`.

6b Inside the script, find the following line where the JVM parameters are defined:

```
JVMARGS="-Xmx256m -Xms256m -Xmn64m -XX:NewSize=64m -XX:MaxNewSize=64m"
```

The `-Xmx` argument specifies the maximum heap size for the JVM*. Increasing the heap size prevents a JVM out of memory condition.

6c Change the value in the `-Xmx` argument from 256 MB to 512 MB.

6d Save the script.

NOTE: Upgraded agent and client software does not require you to execute the configuration script on RHEL 5 machines.

2.5.6 Using the ISO to Upgrade the Orchestrator Agent on Red Hat Enterprise Linux 5 Machines

Use the following procedure if you want to use the Add-on method to upgrade the Orchestrator Console to a PlateSpin Orchestrate Development Client running on a Red Hat Enterprise Linux (RHEL) 5 machine.

1 Shut down the Orchestrator Console on the machine where you intend to install the new Orchestrate Development Client.

2 Download the appropriate PlateSpin Orchestrate ISO (32-bit or 64-bit) to an accessible network location.

3 Mount the PlateSpin Orchestrate ISO as a loopback device as in the following example:

```
mount -o loop PlateSpin_Orchestrate-2.0.2.x86_64.iso /mnt
```

This mounts the ISO in the `/mnt` folder.

4 Navigate to the directory path where the RHEL 5 packages reside. For example:

```
cd /mnt/RHEL5
```

There are five packages in the `/RHEL5` directory:

```
novell-zenworks-monitor-gmond-3.0.4-50.x86_64.rpm
novell-zenworks-orch-config-2.0.2-141.noarch.rpm
novell-zenworks-orch-config-gui-2.0.2-57039.noarch.rpm
novell-zenworks-zos-agent-2.0.2-57039.i586.rpm
novell-zenworks-zos-java-1.5.0_sun_update17-0.x86_64.rpm
```

5 Use the `rpm` command to install the packages:

```
rpm -Uvh *.rpm
```

If you encounter an issue regarding missing dependencies, you can use the `up2date` command to download and install those. For example, if you were missing `libcaplso` or `libcap.so.1`, you would run the following:

```
up2date --solvedeps=libcp.so,libcap.so.1
```

6 (Optional) Increase the heap size that the JVM handles to enable the console to manage a large number of objects.

6a Open the `zoc` bash shell script at `/opt/novell/zenworks/zos/server/bin`.

6b Inside the script, find the following line where the JVM parameters are defined:

```
JVMARGS="-Xmx256m -Xms256m -Xmn64m -XX:NewSize=64m -XX:MaxNewSize=64m"
```

The `-Xmx` argument specifies the maximum heap size for the JVM. Increasing the heap size prevents a JVM out of memory condition.

6c Change the value in the `-Xmx` argument from 256MB to 512MB.

6d Save the script.

NOTE: Upgraded agent and client software does not require you to execute the configuration script on RHEL 5 machines.

2.5.7 Using the ISO to Upgrade the Orchestrator Agent or the Orchestrator Clients on Windows Machines

The PlateSpin Orchestrate Agent and the PlateSpin Orchestrate Development Client are supported on Windows* 2003 and Windows XP. To upgrade, we recommend that you use the methods native to the OS to uninstall an older agent or client from the machine, then install the new 2.0 release of the Orchestrate Agent or the Orchestrate Development Client.

Use the following steps to download the PlateSpin Orchestrate component you want to install:

- 1** Download the appropriate PlateSpin Orchestrate 2.0.2 ISO (32-bit or 64-bit) to an accessible network location.
- 2** Create a DVD from the ISO or use a tool that will mount the ISO.
- 3** Navigate to the directory path where the Windows packages (Windows 2003 or Windows XP) reside.
- 4** Double-click the appropriate file (`.exe`) to launch an installation and configuration wizard for the console.

2.5.8 Using the Administrator Information Page to Upgrade the Agents and Clients

The Administrator Information Page includes installers for the PlateSpin Orchestrate 2.0 Agents and Clients for Windows and various Linux/UNIX machines (see “[Installing the Orchestrate Agent from the Administrator Information Page](#)” in the *PlateSpin Orchestrate 2.0 Installation and Configuration Guide*). The page has no facility for upgrading an agent or client.

To upgrade, we recommend that you use the methods native to the OS to uninstall an older agent or client from the machine, then install the new 2.0 release of the Orchestrate Agent or Orchestrate Development Client.

2.6 Upgrading the ZENworks VM Manager Console to PlateSpin Orchestrate VM Client

If you installed the ZENworks Orchestrator VM Manager console, the new version (PlateSpin Orchestrate VM Client) must be installed in its place. There is no upgrade option for this component.

To install the new client, you must do the following:

- 1 Before upgrading ZENworks Orchestrator to PlateSpin Orchestrate, check out all of the VMs from the Warehouse, then perform that upgrade (see [Section 2.1, “Upgrading the ZENworks Orchestrator Server Components,”](#) on page 15).
VMs that are checked in to the Warehouse cannot be recovered in PlateSpin Orchestrate. They must be checked out before upgrading in order for them to be discoverable in VM Client.
- 2 Uninstall the ZENworks VM Manager client:
 - ♦ **Windows:** Click *Start > Control Panel > Add or Remove Programs*, select the *ZENworks Orchestrator VM Manager* item, then click *Remove*.
 - ♦ **Linux:** Run the following command:

```
/opt/novell/zenworks/vmmanagement/Uninstall_ZENworks_VMM/  
Uninstall_ZENworks_Orchestrator_VM_Manager_1.3.0
```
- 3 Follow the steps in “[Installing the Orchestrate VM Client](#)” in the *PlateSpin Orchestrate 2.0 Installation and Configuration Guide* to install the new client.

2.7 Running the Upgrade Configuration on an Enterprise Scale

If you have a number of ZENworks Orchestrator Server components or ZENworks Orchestrator Agent components to upgrade in an enterprise environment, you might want to follow these general steps to accomplish the upgrade.

- 1 Use a reputable configuration management tool to distribute and install the upgrade software. Examples include ZENworks Linux Management, ZENworks Configuration Management, and the Red Hat Network*.
- 2 Configure the upgraded components on a base machine, then, use the configuration software to distribute the respective `.conf` files to the servers or nodes being upgraded.

2.8 Upgrading a ZENworks Orchestrator 1.3 High Availability Configuration

This section provides an example of upgrading a ZENworks Orchestrator 1.3 high availability configuration to a PlateSpin Orchestrate 2.0 high availability configuration with the following details:

- ♦ Two ZENworks Orchestrator Servers
 - c114
 - c115
- ♦ One additional server (c122) with the following Orchestrator components installed

Monitoring Server
VM Warehouse
Orchestrator Agent
Orchestrator Clients
Linux High Availability Clients

Upgrade to PlateSpin Orchestrate by following these sections and their subordinate steps in this order:

1. [Section 2.8.1, “Snapshotting the ZENworks Orchestrator Environment,” on page 49](#)
2. [Section 2.8.2, “Enabling Rollback and Backing Up the Server Instance,” on page 49](#)
3. [Section 2.8.3, “Upgrading the ZENworks Orchestrator Server,” on page 50](#)
4. [Section 2.8.4, “Removing Obsolete ZENworks Orchestrator Patterns,” on page 51](#)
5. [Section 2.8.5, “Configuring Upgraded Orchestrate Servers in the High Availability Environment,” on page 51](#)
6. [Section 2.8.6, “Installing and Configuring Monitoring in the High Availability Environment,” on page 52](#)

2.8.1 Snapshotting the ZENworks Orchestrator Environment

To prepare the environment for an upgrade to a PlateSpin Orchestrate environment, snapshot the old environment.

- 1 From the machine where the VM Warehouse is installed (c122), stop all VMs, then move them out of the warehouse to another repository on a VM host in the grid.
- 2 Use the high availability client (Heartbeat2) to stop the Orchestrate Server. This prevents the high availability cluster from re-starting the Orchestrate Server.
- 3 Use the following command to restart the Orchestrate Server on the host where it was last running.

```
/etc/init.d/novell-zosserver start
```

- 4 Use the following command to stop and snapshot the Orchestrate Server.

```
/etc/init.d/novell-zosserver stop --snapshot
```

2.8.2 Enabling Rollback and Backing Up the Server Instance

When the old environment is snapshotted, you need to further prepare the Orchestrate Server for the upgrade.

- 1 From the command line of both Orchestrate Servers (c114 and c115), use the `rug` command to enable the rollback for the server.

```
rug set rollback true
```

- 2 From the command line of both Orchestrate Servers (c114 and c115) use the following command to back up your server instance before you upgrade.

```
cp -rH /var/opt/novell/zenworks/zos/server ~/server.bkp
```

You can use the `rpm -qa | grep zenwo | sort` command to list the rpms that are currently in the cluster:

c114: This is one of the ZENworks Orchestrator Servers. Its RPM packages include:

```
novell-zenworks-orch-config-1.3.0-41
novell-zenworks-orch-config-gui-1.3.0-33604
novell-zenworks-zos-clients-1.3.0-33604
novell-zenworks-zos-java-1.5.0_sun_update17-0
novell-zenworks-zos-server-1.3.0-33604
novell-zenworks-zos-server-data-agent-1.3.0-33604
novell-zenworks-zos-server-data-clients-1.3.0-33604
novell-zenworks-zos-server-data-jre-1.3.9-33604
```

c115: This is another ZENworks Orchestrator Server. Its RPM packages include:

```
novell-zenworks-orch-config-1.3.0-41
novell-zenworks-orch-config-gui-1.3.0-33604
novell-zenworks-zos-clients-1.3.0-33604
novell-zenworks-zos-java-1.5.0_sun_update17-0
novell-zenworks-zos-server-1.3.0-33604
novell-zenworks-zos-server-data-agent-1.3.0-33604
novell-zenworks-zos-server-data-clients-1.3.0-33604
novell-zenworks-zos-server-data-jre-1.3.9-33604
```

c122: This is the server with Monitoring (Agent and Server), the VM Warehouse, the Orchestrator Agent, the Orchestrator Clients, and the Heartbeat Client for high availability. Its RPM packages include:

```
novell-zenworks-monitor-gmetad-3.0.4-44
novell-zenworks-monitor-gmond-3.0.4.44
novell-zenworks-monitor-web-3.0.4.44
novell-zenworks-orch-config-1.3.0-41
novell-zenworks-orch-config-gui-1.3.0-33604
novell-zenworks-vmbuilder-cimproviders-1.3.0-33604
novell-zenworks-vmbuilder-cli-1.3.0-4
novell-zenworks-vmbuilder-zosjob-1.3.0-3
novell-zenworks-vmwarehouse-base-1.3.0-46
novell-zenworks-vmwarehouse-comproviders-1.3.0-27
novell-zenworks-zos-server-agent-1.3.0-33604
novell-zenworks-zos-server-clients-1.3.0-33604
novell-zenworks-zos-java-1.5.0_sun_update17-0
```

2.8.3 Upgrading the ZENworks Orchestrator Server

To upgrade the ZENworks Orchestrator Server in a high availability environment, use the ZENworks Linux Management `rug` command.

The steps for upgrading the Orchestrator Server patterns in a high availability environment are the same as for a normal upgrade. The procedure is detailed in the section entitled “[Upgrading ZENworks Orchestrator Server Packages at the Command Line](#)” on page 20. Remember to perform the upgrade on each ZENworks Orchestrator Server in the environment.

2.8.4 Removing Obsolete ZENworks Orchestrator Patterns

After you upgrade ZENworks Orchestrator 1.3 packages to PlateSpin Orchestrate 2.0 packages, you need to remove the obsolete ZENworks Orchestrator 1.3 patterns that are not used in PlateSpin Orchestrate.

In this example, you need to remove the VM Warehouse and the Monitoring Service from c122. The Monitoring Service and the Orchestrate Server must be installed on the same machine, so install the Monitoring Service on c114 and c115.

For more information see [“Removing Obsolete and Unneeded ZENworks Orchestrator Patterns” on page 22.](#)

2.8.5 Configuring Upgraded Orchestrate Servers in the High Availability Environment

In a high availability environment, it is necessary to configure only one of the newly upgraded PlateSpin Orchestrate Servers in the cluster. You should upgrade the machine that was last running for the purpose upgrading patterns (in this scenario, it will be c114).

- 1 From the command line of the machine where you last ran commands to upgrade patterns (c114) run the following command to begin the upgrade configuration:

```
/opt/novell/zenworks/orch/bin/config
```

The upgrade script introduction is displayed:

```
Welcome to PlateSpin Orchestrate.
```

```
This program will configure PlateSpin Orchestrate 2.0
```

```
Select whether this is a new install or an upgrade
```

```
i) install
u) upgrade
- - - - -
```

```
Selection [install]:
```

- 2 Enter u to begin the upgrade.

The product selection section of the script is displayed:

```
Select products to upgrade
```

```
#  selected  Item
1)      no    PlateSpin Orchestrate Monitoring Service
2)     yes    PlateSpin Orchestrate Server
3)      no    PlateSpin Orchestrate Agent
4)      no    PlateSpin Orchestrate VM Builder (not installed)
```

```
Select from the following:
```

```
1 - 4)  toggle selection status
        a)  all
        n)  none
        f)  finished making selections
        q)  quit -- exit the program
```

```
Selection [finish]:
```

- 3 Deselect the PlateSpin Orchestrate Monitoring Service, make sure that the PlateSpin Orchestrate Server is the only component selected, then enter `f` to finish the selection. and display the high availability section of the script:

```
Gathering information for upgrading PlateSpin Orchestrate Server . . .  
  
Select whether this is a standard or high-availability server  
  
s) standard  
h) ha  
- - - - -
```

```
Selection [standard]:
```

- 4 Enter `h` to indicate that this is a high availability server, then enter the fully qualified cluster hostname or IP address that is to be used for configuring this server instance.
- 5 Continue with the upgrade configuration script, providing the information required.
Make sure you select port 8080 for the User Portal; port 80 is to be used for the Monitoring Server.
- 6 When the script presents the question of whether to use the existing license file, enter `n` (no). Because this is an upgrade the existing license does not work for the upgraded server. You need to provide a new license file. Enter the path to the new license file.
- 7 At the configuration summary section of the script, confirm the data you have supplied, then enter `yes` to proceed with the upgrade of the server.
- 8 On other machines in the cluster where the Orchestrate Server was upgraded, copy the new license key (`key.txt`) in `/opt/novell/zenworks/zos/server/license`.

2.8.6 Installing and Configuring Monitoring in the High Availability Environment

When you have completed configuring the Orchestrate Servers for the high availability environment, you need to install PlateSpin Orchestrate Monitoring (both the Monitoring Server and the Monitoring Agent) and then restart the Orchestrate Server instance in the clustering tools.

IMPORTANT: Before you install and configure the Orchestrate Monitoring Service, make sure that the Orchestrate Servers are not bound to port 80.

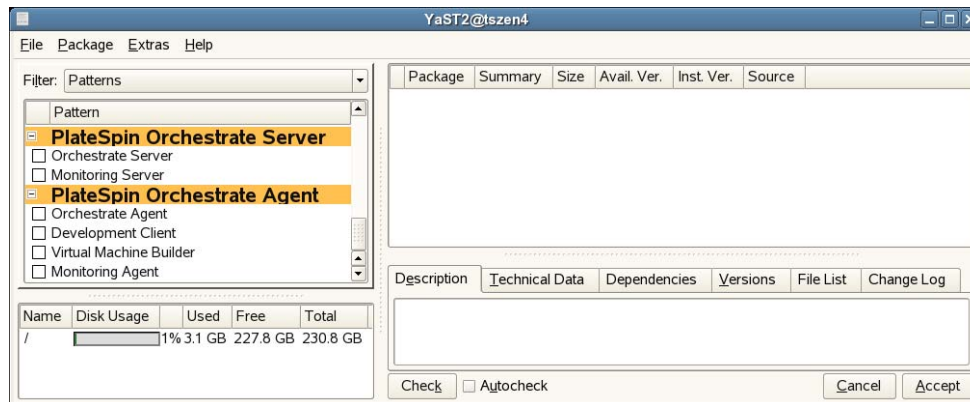
You should following the steps in the following sections in the following order to install and configure Orchestrate Monitoring after you upgrade to PlateSpin Orchestrate 2.0:

1. [“Installing the Monitoring Components” on page 53](#)
2. [“Configuring the Monitoring Service” on page 53](#)
3. [“Preparing the Orchestrate Primary Monitoring Server” on page 55](#)
4. [“Preparing the Orchestrate Secondary Monitoring Server\(s\)” on page 55](#)
5. [“Configuring the Heartbeat2 High Availability Client” on page 56](#)

Installing the Monitoring Components

You need to install PlateSpin Orchestrate Monitoring (both the Server and the Agent) on both Orchestrate Servers (c114 and c115) after they have been initially upgraded.

- 1 Log in to the target SLES 10 SP2 server as `root`, then open YaST2.
- 2 In the YaST Control Center, click *Software*, then click *Add-on Product* to display the Add-on Product Media dialog box.
- 3 In the Add-on Product Media dialog box, select the ISO media (*Local Directory* or *DVD*) to install.
 - 3a (Conditional) Select *DVD*, click *Next*, insert the DVD, then click *Continue*.
 - 3b (Conditional) Select *Local Directory*, click *Next*, select the *ISO Image* check box, browse to ISO on the file system, then click *OK*.
- 4 Read and accept the license agreement, then click *Next* to display YaST2.
- 5 In YaST2, click the *Filter* drop-down menu, then select *Patterns* to display the install patterns available on the PlateSpin Orchestrate ISO.



- 6 Select the PlateSpin Orchestrate Monitoring patterns:
 - ♦ **Monitoring Server:** Uses open source Ganglia monitoring of the performance of certain data on network resources in a user-defined time period.
 - ♦ **Monitoring Agent:** This pattern is installed with any installation of the Orchestrate Server. It installs the Ganglia Agent on each monitored node, which collects performance metrics and sends the data to the Orchestrate Monitoring Server.
- 7 Click *Accept* to install the packages.
- 8 Repeat Steps 1-7 on the Orchestrate Servers that are part of the high availability environment.

Configuring the Monitoring Service

For this section, the configuration procedure is shown using the text-based configuration tool only. You can also perform it using the GUI Configuration Wizard. You need to configure the Monitoring components one Orchestrate Server only. For this example, it is configured on c114.

- 1 From the Orchestrate Server machine, make sure you are logged in as `root` to run the configuration script.
- 2 Run the script, as follows:

```
/opt/novell/zenworks/orch/bin/config
```

When the script runs, the following information is initially displayed:

```
Welcome to PlateSpin Orchestrate.
```

```
This program will configure PlateSpin Orchestrate 2.0
```

```
Select whether this is a new install or an upgrade
```

```
i) install  
u) upgrade  
- - - - -
```

```
Selection [install]:
```

3 Press Enter to select the default (install).

When you make the selection, the following information is displayed:

```
Select products to configure
```

```
#  selected  Item  
1)   yes    PlateSpin Orchestrate Monitoring Service  
2)   no     PlateSpin Orchestrate Server (not installed)  
3)   no     PlateSpin Orchestrate Agent (not installed)  
4)   no     PlateSpin Orchestrate VM Builder (not installed)
```

```
Select from the following:
```

```
1 - 4) toggle selection status  
a) all  
n) none  
f) finished making selections  
q) quit -- exit the program
```

```
Selection [finish]:
```

4 Press Enter to finish the selection of the Monitoring Service.

The following question is displayed:

```
You can configure this host to be the Monitoring Server or a monitored  
node
```

```
Configure this host as the Monitoring Server? (y/n) [y]:
```

5 Press Enter to accept the default (yes) and indicate that you want to use this machine as a Monitoring Server.

The following information is displayed:

```
Enter a name describing this monitored computer's location. This name  
appears in the Monitoring interface as the location of the device.
```

```
Location [c114]:
```

6 Press Enter to accept the default name or specify a name that you want to describe the monitored computer's location.

7 View the configuration summary information to confirm that it is correct, then if you do not want to make changes, press enter to configure Orchestrate Monitoring Services.

8 Open the configuration log file (`/var/opt/novell/novell_zenworks_orch_install.log`) to make sure that the monitoring components were correctly configured.

Preparing the Orchestrate Primary Monitoring Server

The machine where you installed PlateSpin Orchestrate Monitoring Services and where you performed the configuration using the `config` or `guiconfig` scripts is considered the primary monitoring server. In this example (see [“Installing the Monitoring Components” on page 53](#) and [“Configuring the Monitoring Service” on page 53](#)) this would be c114.

To configure the primary monitoring server, you need to run a script that does the following:

- ♦ creates monitoring directories on shared storage
- ♦ copies monitoring files to the shared storage
- ♦ creates backups of the original monitoring files
- ♦ links files from shared storage to the local places
- ♦ turns off `Apache2`, `gmond`, and `gmetad` services

You can use the example script below as a template for this script. Paste it into an `.sh` file and run it on the primary monitoring server.

NOTE: This script assumes that `/zos` is the name of the shared storage area.

```
mkdir -p /zos/monitor
cp -av /etc/apache2 /zos/monitor
ln -sf /etc/mime.types /zos/monitor/apache2/mime.types
mv /etc/apache2/ /etc/apache2.orig
ln -sf /zos/monitor/apache2 /etc

cp -av /etc/opt/novell/zenworks/monitor /zos/monitor
mv /etc/opt/novell/zenworks/monitor /etc/opt/novell/zenworks/monitor.orig
ln -sf /zos/monitor/monitor /etc/opt/novell/zenworks/monitor

cp -av /var/opt/novell/zenworks/monitor/rrds /zos/monitor
mv /var/opt/novell/zenworks/monitor/rrds
/var/opt/novell/zenworks/monitor/rrd.orig
ln -sf /zos/monitor/rrds /var/opt/novell/zenworks/monitor

chkconfig apache2 off
chkconfig gmond off
chkconfig gmetad off

rcapache2 stop
rcnovell-gmetad stop
rcnovell-gmond stop
```

Preparing the Orchestrate Secondary Monitoring Server(s)

The machine where you installed PlateSpin Orchestrate Monitoring Services but did not configure the monitoring services are considered the secondary monitoring server(s). In this example (see [“Installing the Monitoring Components” on page 53](#)) this would be c115.

To configure a secondary monitoring server, you need to run a script that does the following:

- ♦ creates backups of the original monitoring files

- ♦ links files from shared storage to the local places
- ♦ turns off Apache2, gmond, and gmetad services

You can use the example script below as a template for this script. Paste it into an `.sh` file and run it on a secondary monitoring server.

```
mv /etc/apache2/ /etc/apache2.orig
ln -sf /zos/monitor/apache2 /etc

mv /etc/opt/novell/zenworks/monitor /etc/opt/novell/zenworks/monitor.orig
ln -sf /zos/monitor/monitor /etc/opt/novell/zenworks/monitor

mv /var/opt/novell/zenworks/monitor/rrds
/var/opt/novell/zenworks/monitor/rrd.orig
ln -sf /zos/monitor/rrds /var/opt/novell/zenworks/monitor

chkconfig apache2 off
chkconfig gmond off
chkconfig gmetad off

rcapache2 stop
rcnovell-gmetad stop
rcnovell-gmond stop
```

Configuring the Heartbeat2 High Availability Client

The final step in preparing to upgrade your ZENworks Orchestrate 1.3 high availability environment to a PlateSpin Orchestrate 2.0 high availability environment is to configure the Heartbeat2 client for the changes made in previous steps. You can either do this manually, using the Heartbeat2 interface to add the appropriate information and parameters, or you can run a script to accomplish the same thing.

The lines of sample code below are excerpted from the `/opt/novell/zenworks/orch/bin/ha/cluster_zos_server.xml` file on the Orchestrate Server.

```
<primitive id="Apache2" class="lsb" type="apache2" provider="heartbeat">
  <instance_attributes id="apache_attr">
    <attributes>
      <nvpair id="apache2_target_role" name="target_role"
value="started"/>
    </attributes>
  </instance_attributes>
  <operations>
    <op id="Apache2_Status" name="status" description="Monitor
the status of Apache2" interval="120" timeout="15" start_delay="15"
role="Started" on_fail="restart"/>
  </operations>
</primitive>
<primitive id="Gmetad" class="lsb" type="novell-gmetad"
provider="heartbeat">
  <instance_attributes id="gmetad_attr">
    <attributes>
      <nvpair id="gmetad_target_role" name="target_role"
value="started"/>
    </attributes>
  </instance_attributes>
  <operations>
```



```

        <op id="Gmetad_Status" name="status" description="Monitor
the status of Gmetad" interval="300" timeout="15" start_delay="15"
role="Started" on_fail="restart"/>
    </operations>
</primitive>
<primitive id="Gmond" class="lsb" type="novell-gmond"
provider="heartbeat">
    <instance_attributes id="gmond_attr">
        <attributes>
            <nvpair id="gmond_target_role" name="target_role"
value="started"/>
        </attributes>
    </instance_attributes>
    <operations>
        <op id="Gmond_Status" name="status" description="Monitor the
status of Gmetad" interval="300" timeout="15" start_delay="15"
role="Started" on_fail="restart"/>
    </operations>
</primitive>

```

These lines need to be put into an `.xml` text file. For this example, the file is named `sample.xml`.

When the file is ready, run the following command for this file:

```
/usr/sbin/cibadmin -o resources -U -x sample.xml
```


Documentation Updates

A

This section contains information about documentation content changes that were made in this PlateSpin Orchestrator Installation and Configuration Guide after the initial release of PlateSpin Orchestrator 2.0. The changes are listed according to the date they were published.

The documentation for this product is provided on the Web in two formats: HTML and PDF. The HTML and PDF documentation are both kept up-to-date with the changes listed in this section.

If you need to know whether a copy of the PDF documentation that you are using is the most recent, the PDF document includes a publication date on the title page.

The documentation was updated on the following dates:

- ♦ [Section A.1, “October 9, 2009,” on page 59](#)
- ♦ [Section A.2, “July 15, 2009,” on page 59](#)
- ♦ [Section A.3, “June 17, 2009 \(2.0.2 Release\),” on page 59](#)

A.1 October 9, 2009

Updates were made to the following sections:

Location	Update
Section 2.1.4, “Snapshotting the Existing Server Installation,” on page 17	Added technical details about what happens during snapshotting.
Section 2.1.7, “Revising An Outdated, Required .conf File,” on page 22	Added location information for the <code>ganglia-auth.conf</code> file and restart command for the Apache server.

A.2 July 15, 2009

Updates were made to the following sections:

Location	Update
Chapter 2, “Upgrading ZENworks Orchestrator 1.3 Components to PlateSpin Orchestrator 2.0,” on page 15 (various locations)	Java RPM name was corrected.

A.3 June 17, 2009 (2.0.2 Release)

Updates were made to the following sections:

Location	Update
Section 2.1.7, “Revising An Outdated, Required .conf File,” on page 22	New content.

Location	Update
Section 2.1.8, "Running Discover on VM Images," on page 23	New content.
"Manually Configuring the Remote Audit Database after PlateSpin Orchestrate Is Upgraded" on page 31	Added content to explain updating audit database.
Section 2.5.3, "Automatically Upgrading the Orchestrate Agent from the Orchestrate Development Client," on page 38	New content.