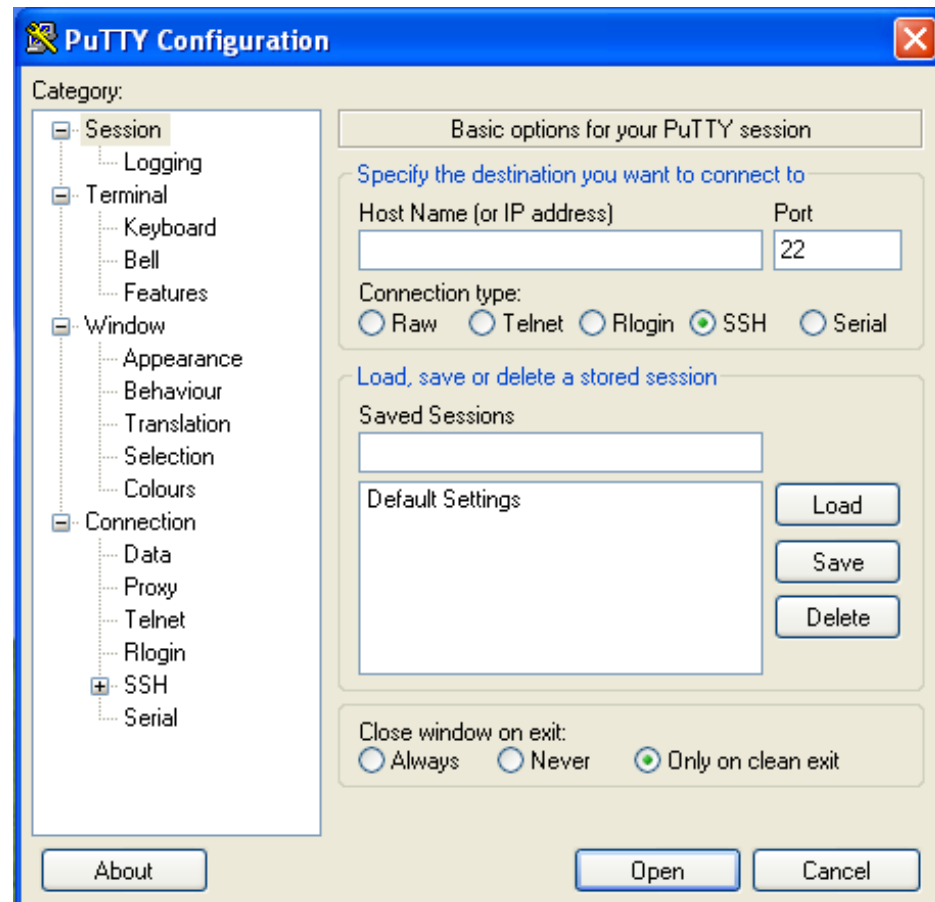


Remote Access from Windows

PuTTY

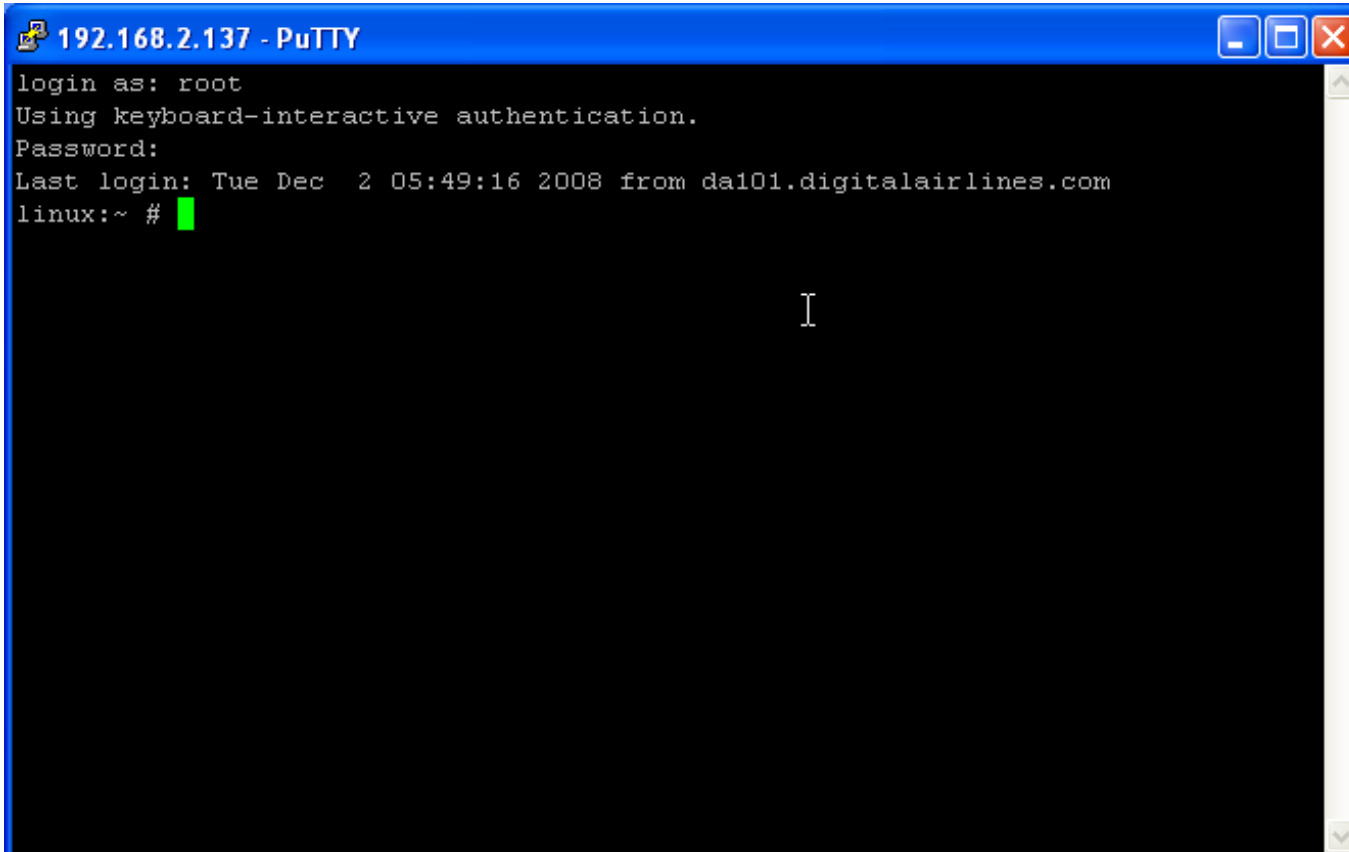
- <http://www.chiark.greenend.org.uk/~sgtatham/putty/download.html>



First Login



Log In the Linux System



The image shows a PuTTY terminal window titled "192.168.2.137 - PuTTY". The terminal output is as follows:

```
login as: root
Using keyboard-interactive authentication.
Password:
Last login: Tue Dec  2 05:49:16 2008 from da101.digitalairlines.com
linux:~ # █
```

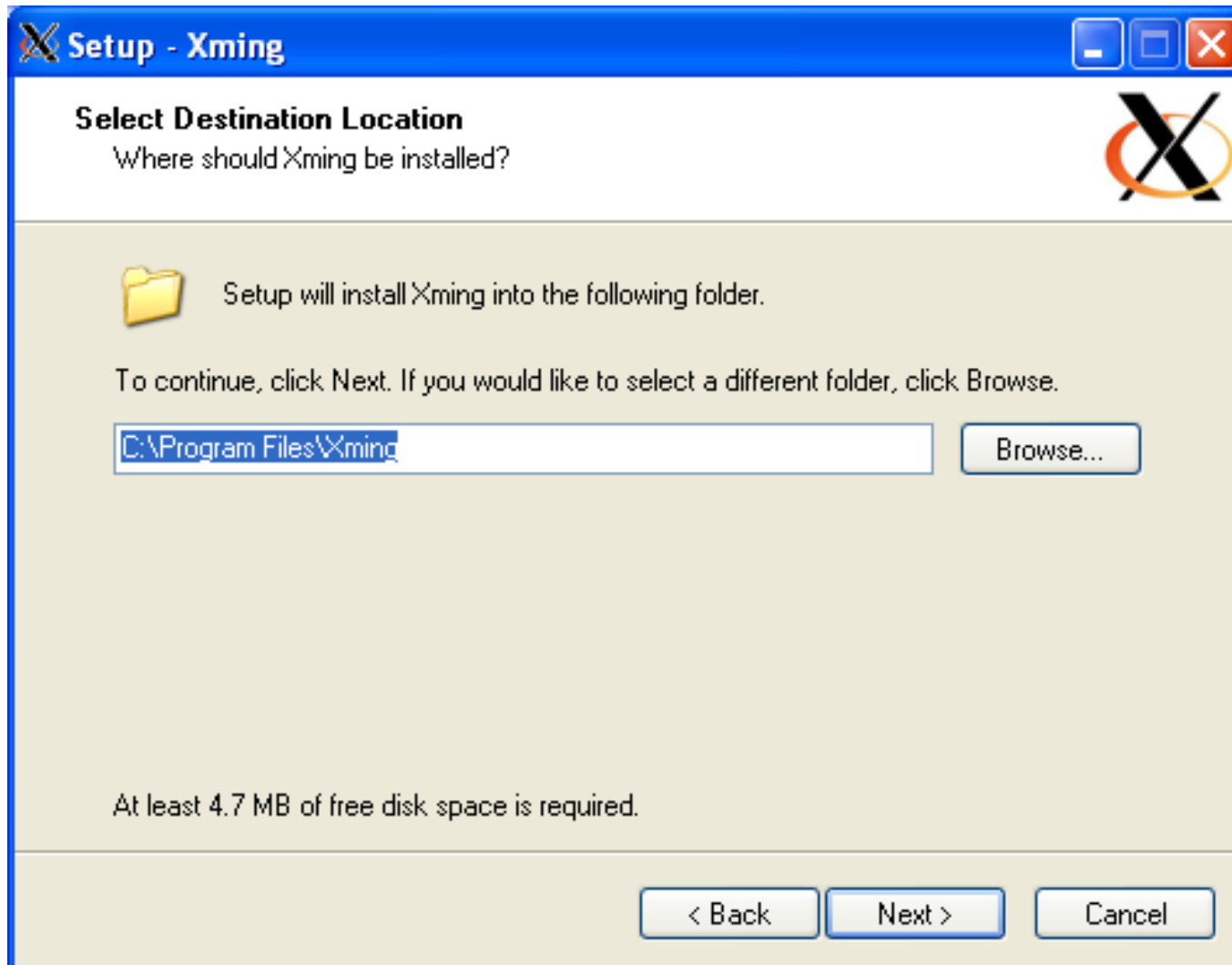
A cursor is visible on the line "linux:~ # █".

Xming X Server

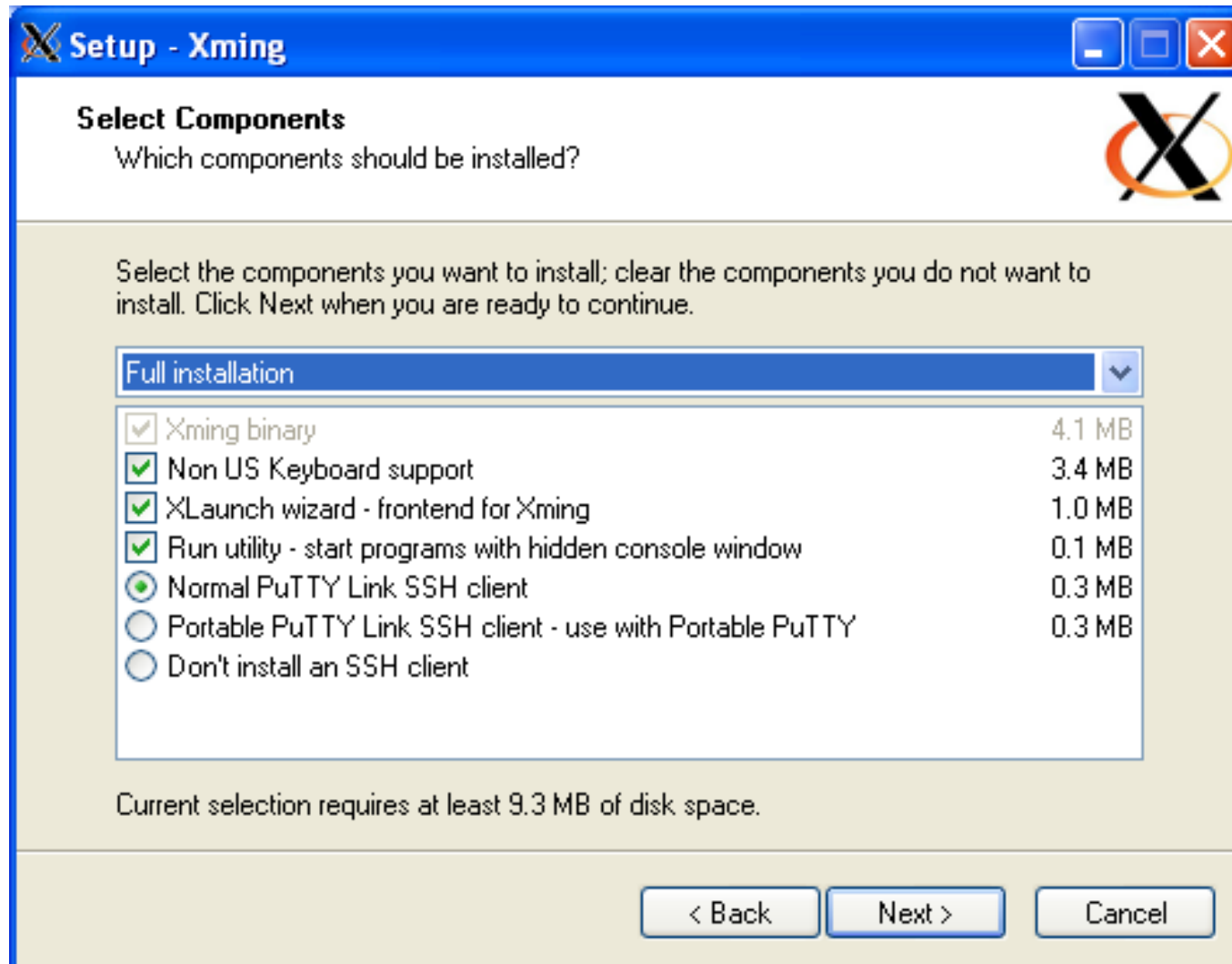
- <http://www.straightrunning.com/XmingNotes/>



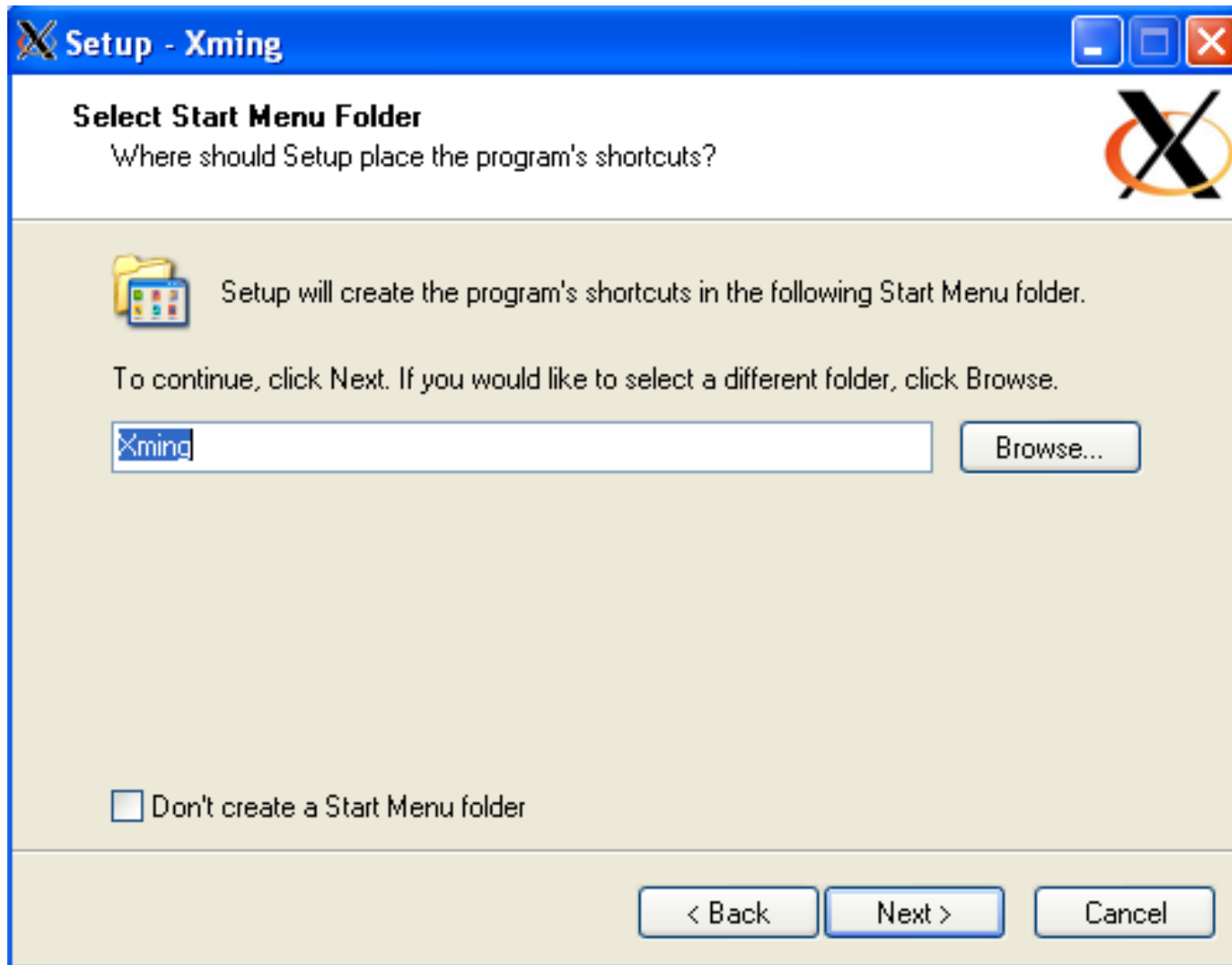
Install Xming



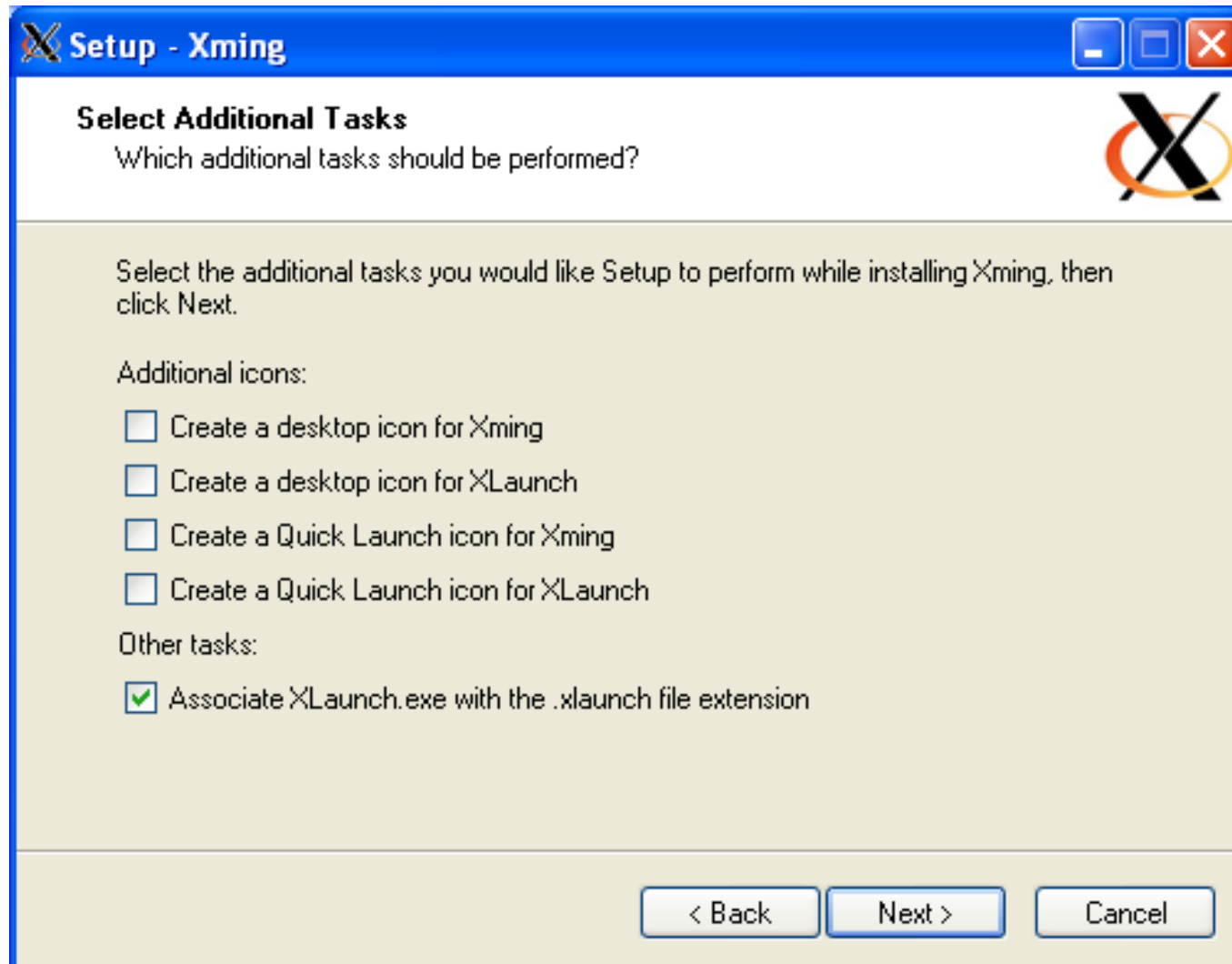
Install Xming



Install Xming

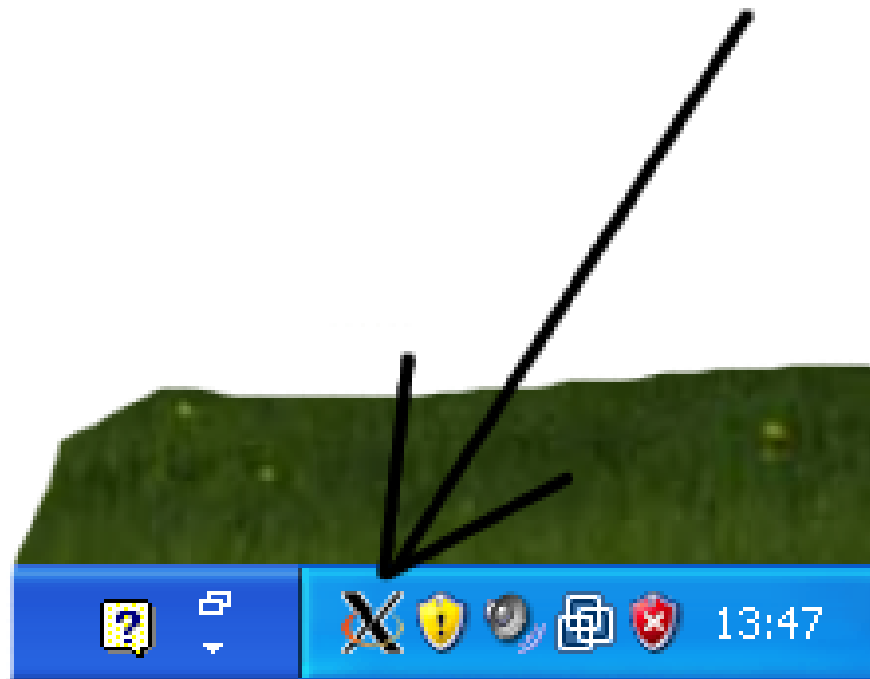


Install Xming



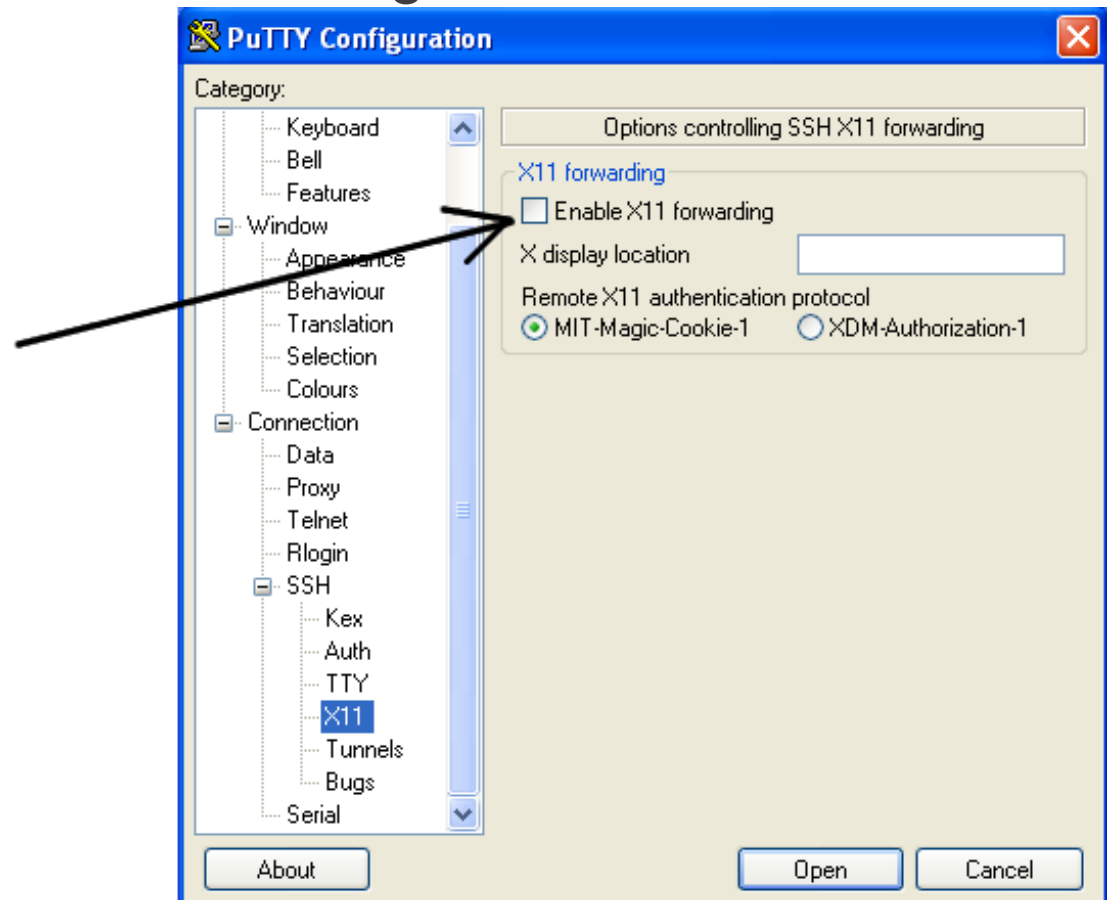
Install Xming

After Installation new icon in system tray



Forward X11

In Putty: Select Connection > SSH > X11 >
Enable X11 forwarding



YaST on Windows

