



### Start a new tree

- Simply install the desired services



© 2005 Novell Inc. All Rights Reserved

N

---

---

---

---

---

---

---

---

### Add the first OES Linux server

First Run Deployment Manager

- Prep the tree
- Extend the schema

Then install OES Linux



© 2005 Novell Inc. All Rights Reserved

N

---

---

---

---

---

---

---

---

### Add a Linux server to a NetWare only tree

First Run Deployment Manager

- Prep the tree
- Extend the schema

Then install OES Linux



© 2005 Novell Inc. All Rights Reserved

N

---

---

---

---

---

---

---

---

## Installation

N

NetWare	Linux
- NetWare Installer	- YaST (GUI or Text)
- 2 CDs	- 6-9 CDs
- Remote Installation	- Network Installation
> Deployment Manager	- NFS
- Automated	- FTP
- Response File	- HTTP
	- VNC
	- SSH
	- Serial
	- Automated
	- Autoyast

7 © 2005 Novell Inc. All Rights Reserved.

---

---

---

---

---

---

---

---

---

---

## Installation Methods – OES Linux

N

- 1) CD Install
- 2) Network Install
- 3) VNC Install
- 4) SSH Install

8 © 2005 Novell Inc. All Rights Reserved.

---

---

---

---

---

---

---

---

---

---

## CD Installation

N

**OES SP1 with SLES 9 SP2**



CD1	CD2	CD3	CD4	CD5	CD6	CD7	CD8	CD9	
OES SP1 CD1	OES SP1 CD2	OES SP1 CD3	SLES Core CD1	SLES Core CD2	SLES Core CD3				new install

Note: CD 4, 8, and 9 are optional source code CDs.

9 © 2005 Novell Inc. All Rights Reserved.

---

---

---

---

---

---

---

---

---

---

## Network Installation

N

Install over the network from an existing SUSE LINUX Enterprise Server 9 Network Installation Server using one of the following protocols:

- NFS
- FTP
- HTTP

Boot Options for non-DHCP install

- hostip=<ipaddress>
- netmask=<subnetmask>

10 © 2005 Novell Inc. All Rights Reserved.

---

---

---

---

---

---

---

---

---

---

## VNC Installation

N

Can use a

- VNC Viewer
  - Example: RealVNC or Remote Desktop Connection on NLD
- web browser
  - Example: Firefox (URL: <http://oeslinuxserver:5801>)



Boot options:

- vnc=1
- vncpassword=<password>

11 © 2005 Novell Inc. All Rights Reserved.

---

---

---

---

---

---

---

---

---

---

## SSH Installation

N

Boot options:

- ssh=<ipaddress>
- sshpassword=<password>
- ssh -X
  - -X allows for a GUI installation

12 © 2005 Novell Inc. All Rights Reserved.

---

---

---

---

---

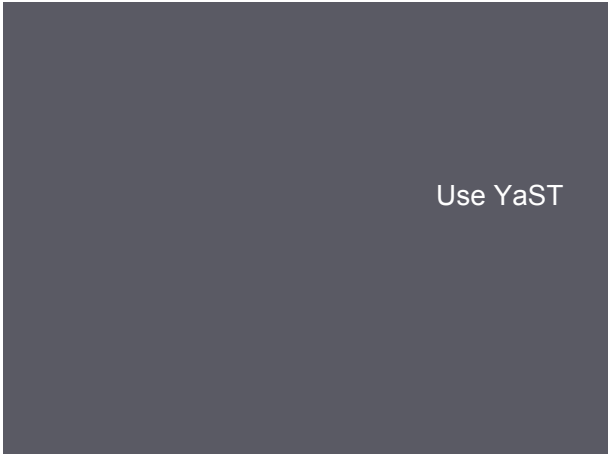
---

---

---

---

---



---

---

---

---

---

---

---

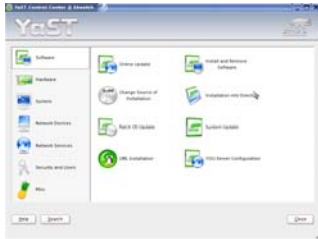
---

## YaST

N

### YaST Control Center

- Installation
- Hardware configuration
- System Settings
- Network Devices and Services
- Security and Users
- Misc



14 © 2005 Novell Inc. All Rights Reserved.

---

---

---

---

---

---

---

---

## OES Linux Installation

N

Fully integrated into YaST

- 100% RPM based
  - RPM is RPM Package Management
  - [www.rpm.org](http://www.rpm.org)



15 © 2005 Novell Inc. All Rights Reserved.

---

---

---

---

---

---

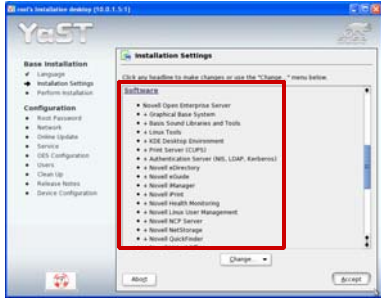
---

---



## OES Installation Settings

N



19 © 2005 Novell Inc. All Rights Reserved.

---

---

---

---

---

---

---

---

---

---

## Predefined Server Types (Pattern Deployments)

N

NetWare	Linux
Novell QuickFinder Server	Novell QuickFinder Server
Novell iFolder 2 Server	Novell iFolder 2 Server
Novell Virtual Office Server	Novell Virtual Office Server
Novell iPrint Server	Novell iPrint Server
Novell Management Server	Novell Management Server
Novell Open Enterprise Server	Novell Open Enterprise Server
+ more	

20 © 2005 Novell Inc. All Rights Reserved.

---

---

---

---

---

---

---

---

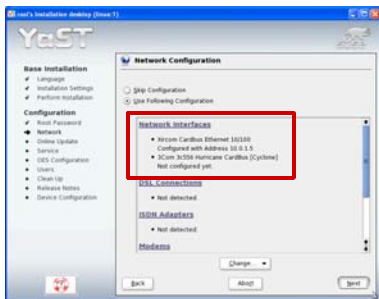
---

---

## Network Configuration

N

Configure a static IP Address



21 © 2005 Novell Inc. All Rights Reserved.

---

---

---

---

---

---

---

---

---

---

