

## Migration Guide

# **Novell®** **ZENworks® 10 Configuration Management** **Asset Management Services**

**10.1**

August 6, 2008

[www.novell.com](http://www.novell.com)



## Legal Notices

Novell, Inc., makes no representations or warranties with respect to the contents or use of this documentation, and specifically disclaims any express or implied warranties of merchantability or fitness for any particular purpose. Further, Novell, Inc., reserves the right to revise this publication and to make changes to its content, at any time, without obligation to notify any person or entity of such revisions or changes.

Further, Novell, Inc., makes no representations or warranties with respect to any software, and specifically disclaims any express or implied warranties of merchantability or fitness for any particular purpose. Further, Novell, Inc., reserves the right to make changes to any and all parts of Novell software, at any time, without any obligation to notify any person or entity of such changes.

Any products or technical information provided under this Agreement may be subject to U.S. export controls and the trade laws of other countries. You agree to comply with all export control regulations and to obtain any required licenses or classification to export, re-export or import deliverables. You agree not to export or re-export to entities on the current U.S. export exclusion lists or to any embargoed or terrorist countries as specified in the U.S. export laws. You agree to not use deliverables for prohibited nuclear, missile, or chemical biological weaponry end uses. See the [Novell International Trade Services Web page \(http://www.novell.com/info/exports/\)](http://www.novell.com/info/exports/) for more information on exporting Novell software. Novell assumes no responsibility for your failure to obtain any necessary export approvals.

Copyright © 2007–2008 Novell, Inc. All rights reserved. No part of this publication may be reproduced, photocopied, stored on a retrieval system, or transmitted without the express written consent of the publisher.

Novell, Inc., has intellectual property rights relating to technology embodied in the product that is described in this document. In particular, and without limitation, these intellectual property rights may include one or more of the U.S. patents listed on the [Novell Legal Patents Web page \(http://www.novell.com/company/legal/patents/\)](http://www.novell.com/company/legal/patents/) and one or more additional patents or pending patent applications in the U.S. and in other countries.

Novell, Inc.  
404 Wyman Street, Suite 500  
Waltham, MA 02451  
U.S.A.  
[www.novell.com](http://www.novell.com)

*Online Documentation:* To access the latest online documentation for this and other Novell products, see the [Novell Documentation Web page \(http://www.novell.com/documentation\)](http://www.novell.com/documentation).

## **Novell Trademarks**

For Novell trademarks, see [the Novell Trademark and Service Mark list \(http://www.novell.com/company/legal/trademarks/tmlist.html\)](http://www.novell.com/company/legal/trademarks/tmlist.html).

## **Third-Party Materials**

All third-party trademarks are the property of their respective owners.



# Contents

<b>About This Guide</b>	<b>7</b>
<b>1 Using the Novell ZENworks 10 Configuration Management Asset Management Services Migration Utility</b>	<b>9</b>
1.1 Before You Begin . . . . .	9
1.2 Overview . . . . .	10
1.2.1 System Requirements . . . . .	11
1.2.2 The Migration Process . . . . .	12
1.3 Installing the ZENworks 10 Configuration Management Asset Management Services Migration Utility . . . . .	13
1.4 Selecting the Migration Source . . . . .	13
1.5 Selecting the Migration Destination . . . . .	15
1.6 Migrating Objects . . . . .	16
1.6.1 Migrating Inventory Data . . . . .	17
1.6.2 Migrating Administrator-Defined Field Definitions . . . . .	18
1.6.3 Migrating Local Product Definitions . . . . .	19
1.6.4 Migrating Asset Management Data . . . . .	20
1.6.5 Migrating Asset Management Data Only . . . . .	21
1.6.6 Migrating License Records . . . . .	22
1.6.7 Migrating Custom Reports . . . . .	23
<b>2 Understanding the Migration Console</b>	<b>27</b>
2.1 Menu Options . . . . .	28
2.2 Select Objects to Migrate Tab . . . . .	29
2.3 Items to Migrate Tab . . . . .	30
2.4 Migration Status Tab . . . . .	30
2.5 Migration History Tab . . . . .	30
2.6 Migrated Objects Tab . . . . .	30
2.7 Select ZAM Database Field . . . . .	31
2.8 Select Zone Field . . . . .	31
2.9 Start Migration Button . . . . .	32
2.10 Cancel Button . . . . .	32
2.11 Migration Queue Progress . . . . .	32
2.12 Migration Task Progress . . . . .	32
<b>A Documentation Updates</b>	<b>33</b>
A.1 August 6, 2008: SP1 (10.1) . . . . .	33
<b>Glossary</b>	<b>35</b>



# About This Guide

This *Novell ZENworks 10 Configuration Management Asset Management Services Migration Utility Migration Guide* includes information to help you successfully migrate selected inventory and asset management data from ZENworks® Asset Management 7.5 to an installed Novell® ZENworks 10 Configuration Management (v10.1) Asset Management Services system. The information in this guide is organized as follows:

- ♦ Chapter 1, “Using the Novell ZENworks 10 Configuration Management Asset Management Services Migration Utility,” on page 9
- ♦ Chapter 2, “Understanding the Migration Console,” on page 27
- ♦ “Glossary” on page 35

## Audience

This guide is intended for ZENworks administrators.

## Feedback

We want to hear your comments and suggestions about this manual and the other documentation included with this product. Please use the User Comments feature at the bottom of each page of the online documentation, or go to the [Novell Documentation Feedback site \(http://www.novell.com/documentation/feedback.html\)](http://www.novell.com/documentation/feedback.html) and enter your comments there.

## Additional Documentation

ZENworks 10 Configuration Management Asset Management Services is supported by other documentation (in both PDF and HTML formats) that you can use to learn about and implement the product. For additional documentation, see the [ZENworks 10 Configuration Management with SP1 \(v10.1\) documentation Web site \(http://www.novell.com/documentation/zcm10/index.html\)](http://www.novell.com/documentation/zcm10/index.html).

## Documentation Conventions

In Novell documentation, a greater-than symbol (>) is used to separate actions within a step and items in a cross-reference path.

A trademark symbol (®, ™, etc.) denotes a Novell trademark. An asterisk (\*) denotes a third-party trademark.

When a single pathname can be written with a backslash for some platforms or a forward slash for other platforms, the pathname is presented with a backslash. Users of platforms that require a forward slash, such as Linux\*, should use forward slashes as required by your software.





# Using the Novell ZENworks 10 Configuration Management Asset Management Services Migration Utility

# 1

The following sections provide instructions on how to use the Novell® ZENworks® 10 Configuration Management Asset Management Services Migration Utility to migrate data from ZENworks Asset Management 7.5 to ZENworks 10 Configuration Management Asset Management Services:

- ♦ [Section 1.1, “Before You Begin,” on page 9](#)
- ♦ [Section 1.2, “Overview,” on page 10](#)
- ♦ [Section 1.3, “Installing the ZENworks 10 Configuration Management Asset Management Services Migration Utility,” on page 13](#)
- ♦ [Section 1.4, “Selecting the Migration Source,” on page 13](#)
- ♦ [Section 1.5, “Selecting the Migration Destination,” on page 15](#)
- ♦ [Section 1.6, “Migrating Objects,” on page 16](#)

## 1.1 Before You Begin

Before you begin migrating data from ZENworks Asset Management 7.5 to ZENworks 10 Configuration Management Asset Management Services, consider the following:

- ♦ You should back up both source and destination databases.
- ♦ If you have migrated inventory data to ZENworks 10 Configuration Management (v10.1) Asset Management Services using the ZENworks 10 (v10.0.3 or earlier) Configuration Management Asset Management Services Migration Utility, you cannot migrate asset management data by using version 10.1 of the utility.
- ♦ You can only migrate objects once.
- ♦ Network devices are not migrated.
- ♦ You need to migrate inventory data before asset management data. If you want to do a staged migration, do not migrate asset management data until all staging is complete. For more information about staging, see [“Staging a Migration” on page 17](#).
- ♦ The ZENworks 10 (v10.1) Configuration Management Asset Management Services Migration Utility migrates data to ZENworks 10 Configuration Management (v10.1) only. You cannot use this version of the utility to migrate data to version 10.0.3 or earlier.

- ♦ Not all custom reports are migrated. For a list of custom reports that are not migrated, see [Section 1.6.7, “Migrating Custom Reports,” on page 23](#).
- ♦ When migrating to a SQL server, note the following file size recommendations:
  - ♦ The destination data file should be at least 1.1 times the size of the source data file.
  - ♦ The destination log file should be at least 1.2 times the size of the source data file.

## 1.2 Overview

The ZENworks 10 Configuration Management Asset Management Services Migration Utility is used to migrate inventory data, which is defined by your ZENworks Asset Management 7.5 collection domains, and asset management data. This data includes the following:

- ♦ Inventory data
  - ♦ Devices (including deleted devices, if desired. See [Section 1.6.1, “Migrating Inventory Data,” on page 17](#))
  - ♦ Device history
  - ♦ Local software products
  - ♦ Hardware/software components
  - ♦ Administrator-defined fields (known as *user*-defined fields in ZENworks Asset Management 7.5)
  - ♦ Custom reports
- ♦ Asset management data
  - ♦ Asset management usage data
  - ♦ Asset management custom reports
  - ♦ Asset management administrator-defined fields (known as *user*-defined fields in ZENworks Asset Management 7.5)
  - ♦ Catalog products
  - ♦ Discovered products
  - ♦ Purchase records
  - ♦ Licensed products
  - ♦ Software collections
  - ♦ Contracts and date notifications
  - ♦ Documents

Network devices and contract-network relationships are not migrated. Contract-to-network-device relationships can be reestablished after a network discovery process is run within ZENworks 10 Configuration Management Asset Management Services.

Inventory data can be migrated by individual device or as a group. Asset management data is migrated as a group.

When you migrate inventory data, by default you are also migrating the following:

- ♦ **Local Product Definitions:** Local product definitions defined in ZENworks Asset Management 7.5. These product definitions are migrated as a group; they cannot be migrated individually. If you want to migrate just the local product definitions without the inventory data, see [“Migrating Local Product Definitions” on page 19](#).
- ♦ **Administrator-Defined Field Definitions:** Asset management and inventory administrator-defined fields defined in ZENworks Asset Management 7.5. (Administrator-defined fields are known as *user*-defined fields ZENworks Asset Management 7.5.) These field definitions are migrated as a group; they cannot be migrated individually. If you want to migrate just the administrator-defined field definitions without the inventory data, see [“Using the Novell ZENworks 10 Configuration Management Asset Management Services Migration Utility” on page 9](#).
- ♦ **Custom Reports:** Asset management and inventory custom reports defined in ZENworks Asset Management 7.5. The reports are migrated as a group. If you want to migrate custom reports without the inventory data, see [“Migrating Custom Reports” on page 23](#).

Migrating inventory data also migrates the following asset management data:

- ♦ Usage data
- ♦ Custom reports
- ♦ Administrator-defined fields

## 1.2.1 System Requirements

The ZENworks 10 Configuration Management Asset Management Services Migration Utility requires the following:

- ♦ Windows\* XP Professional 5.1 SP 2, Windows XP Professional 5.1 SP 3, Windows Vista\* SP1 x86, Windows Server\* 2003 5.2 SP2, or Windows Server 2008 x86; Windows 2000 and Windows 2008 are not supported
- ♦ Network connectivity to source and destination database servers and to the ZENworks 10 Configuration Management server
- ♦ Migration source: ZENworks Asset Management 7.5
- ♦ Migration destination: ZENworks 10 Configuration Management
- ♦ Microsoft .NET Framework Version 2.0 Redistributable Package (x86)
- ♦ (Optional) ZENworks 10 Configuration Management Asset Management Services. This product is required to view migrated asset management data.

The following combinations of databases can be used to migrate data:

- ♦ SQL Server to SQL Server
- ♦ SQL Server to Sybase

## 1.2.2 The Migration Process

Migrating objects (inventory data, custom reports, and so on) consists of six steps:

1. Installing the migration utility. For more information, see [Section 1.3, “Installing the ZENworks 10 Configuration Management Asset Management Services Migration Utility,” on page 13.](#)
2. Backing up both source and destination databases before starting migration and after each successful staging.
3. Selecting the migration source. For more information, see [Section 1.4, “Selecting the Migration Source,” on page 13.](#)
4. Selecting the migration destination. For more information, see [Section 1.5, “Selecting the Migration Destination,” on page 15.](#)

If you have selected a destination zone previously, for example, for a pilot migration, a dialog appears asking if you want to clear the migration status data stored in the ZENworks Asset Management 7.5 source database, which is necessary if you change your migration destination. Click OK to clear the migration status data.

---

**WARNING:** You cannot reselect a migration destination. For example, if you choose a pilot migration destination, then switch to a production destination, you cannot switch back to the pilot destination.

---

5. Selecting objects to migrate.

Administrator-defined field definitions, local product definitions, and custom reports are migrated by default the first time inventory data is migrated. To migrate them separately, see [Section 1.6, “Migrating Objects,” on page 16.](#) Some custom reports are not migrated because of database schema changes. For more information, see [Section 1.6.7, “Migrating Custom Reports,” on page 23.](#)

When selecting objects to migrate, keep the following in mind:

- ♦ If you have migrated inventory data with the ZENworks 10 (v10.0.3 or earlier) Configuration Management Asset Management Services Migration Utility, you cannot migrate objects with the ZENworks 10 Configuration Management (v10.1) Asset Management Services Migration Utility.
- ♦ You can only migrate objects once.
- ♦ You need to migrate inventory data before asset management data.
- ♦ Workstations that have not been inventoried are not migrated. In addition, if the workstation is associated with a contract, the contract-workstation relationship isn't migrated, either.

If you want to do a staged migration, select a subset of workstations to migrate. Do not migrate asset management data until all staging is complete. For more information about staging, see [“Staging a Migration” on page 17.](#)

6. Initiating the migration.

Migration can take several hours to complete, depending on the size of the database being migrated. During the migration, the migration utility may become unresponsive at times. If migration is interrupted or canceled, it can be restarted. The migration then continues from the last migrated record in the migration process. If any errors are listed when the migration process is run again, you can ignore them. For more information, see [Section 1.6, “Migrating Objects,” on page 16.](#)

## 1.3 Installing the ZENworks 10 Configuration Management Asset Management Services Migration Utility

There are two ways to install the ZENworks 10 Configuration Management Asset Management Services Migration Utility: either through a Web browser or through ZENworks Control Center.

---

**NOTE:** Microsoft .NET Framework Version 2.0 Redistributable Package (x86) must be installed prior to installing the migration utility.

---

To use a Web browser to install the utility:

- 1 In your Web browser, access the following URL:  
`http://zenworks_primary_server_id/zenworks-setup`
- 2 Click *Administrative Tools* and download `ZAMmigration.exe` to a temporary location.
- 3 Run `ZAMmigration.exe` to install it on your workstation.
- 4 To run the utility on a supported Windows device, click *Start > All Programs > Novell ZENworks > ZENworks Asset Management Migration Utility*.

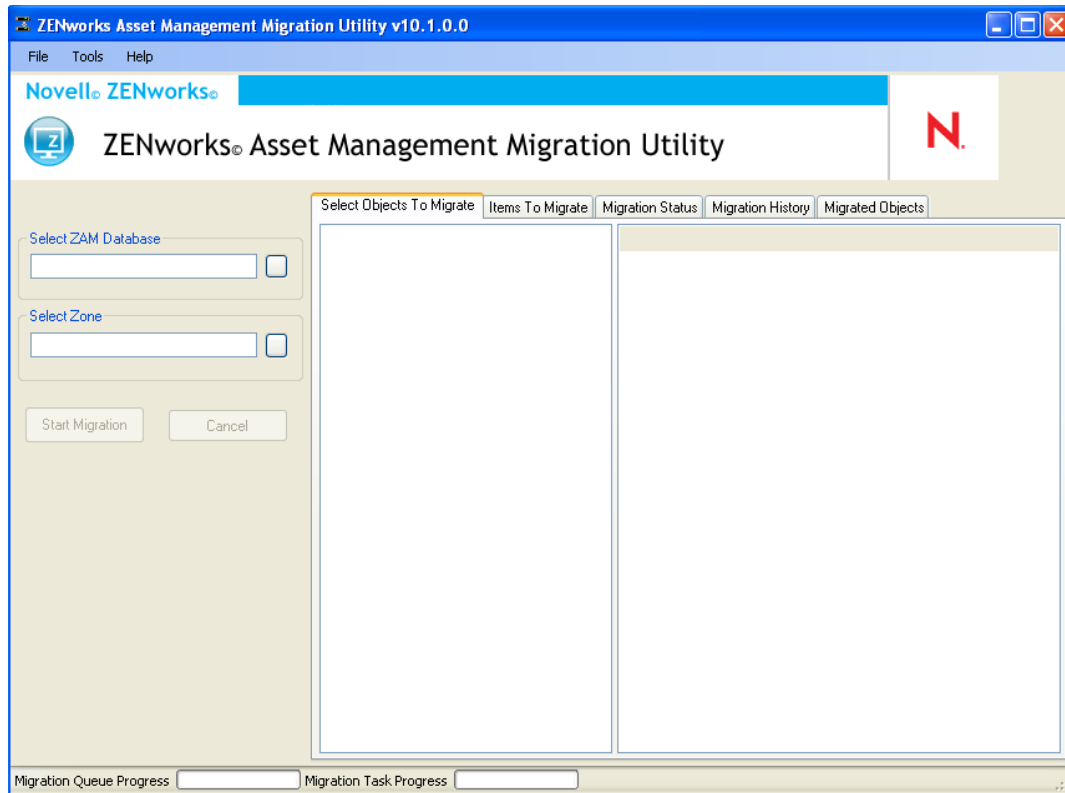
To use ZENworks Control Center to install the utility:

- 1 In ZENworks Control Center, click *Configuration*.
- 2 In the Configuration Tasks list, click *Download ZENworks Tools*.
- 3 Click *Administrative Tools*.
- 4 Click `ZAMmigration.exe` to save it to your hard drive.
- 5 Run `ZAMmigration.exe` to install it on your workstation.
- 6 To run the utility on a supported Windows device, click *Start > All Programs > Novell ZENworks > ZENworks Asset Management Migration Utility*.

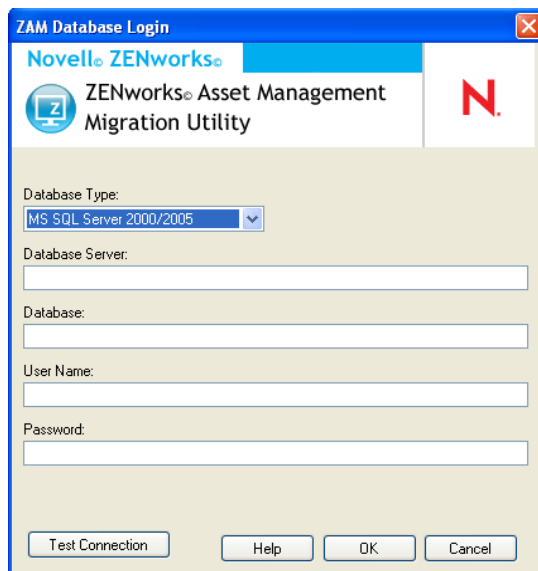
## 1.4 Selecting the Migration Source

The migration source is your ZENworks Asset Management 7.5 database. The migration utility requires that you log in to the migration source with create, modify, and delete privileges. To log in to your database:

- 1 Click *Start > All Programs > Novell ZENworks > ZENworks Asset Management Migration Utility*.



- 2 Click the button to the right of the *Select ZAM Database* field.



- 3 Fill in the following fields:

**Database Type:** Specify *MS SQL Server 2000/2005* for both external and embedded MS SQL Server databases.

**Database Server:** Specify either the DNS name or IP address of the database server. Each time you use this dialog box, the last server you logged in to is displayed here.

**Database:** Specify the database name. Each time you use this dialog box, the last database you logged in to is displayed here.

**User Name:** Specify the username. Each time you use this dialog box, the last username you used is displayed here.

**Password:** Specify the password. This must be specified every time to authenticate.

- 4 Click *OK* to connect. You can click *Test Connection* first to verify that you can connect to the database.
- 5 Continue with [Section 1.5, “Selecting the Migration Destination,” on page 15](#).

## 1.5 Selecting the Migration Destination

To log in to your migration source Management Zone for ZENworks 10 Configuration Management:

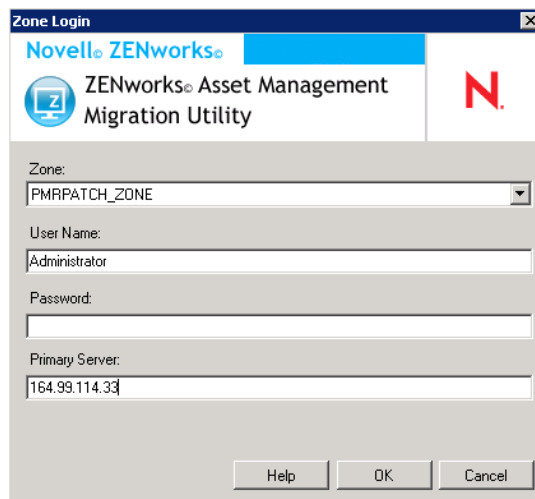
- 1 Make sure you’ve selected the migration source (see [Section 1.4, “Selecting the Migration Source,” on page 13](#)).
- 2 In the Migration Console, click the button to the right of the *Select Zone* field.

If you have previously selected a destination zone, such as for a pilot migration, a dialog box appears asking if you want to clear the migration status data stored in the ZENworks Asset Management 7.5 source database. This is necessary if you change your migration destination. Click *OK* to clear the migration status data.

---

**WARNING:** You cannot reselect a migration destination. For example, if you choose a pilot migration destination, then switch to a production destination, you cannot switch back to the pilot destination.

---



- 3 Fill in the following fields to authenticate to your destination Management Zone:

**Zone:** Specify your Management Zone. This field is not filled in the first time you access the *Zone Login* dialog box. Thereafter, any zone that you previously logged in to by using this dialog box is available from the drop-down list. Each time you use this dialog box, the last zone that you logged in to is displayed here.

**User Name:** Specify the username for the zone. *Administrator* is normally used. If this is the first time you have logged in to this zone by using the Migration Console, nothing is displayed; otherwise, the last username you used is displayed. If you select a Management Zone in the *Zone* field, this field is automatically populated with the username you last used for that zone.

**Password:** Specify the password. This must be entered every time to authenticate.

**Primary Server:** Specify either its DNS name or IP address. This field is automatically populated when you select a Management Zone in the *Zone* field.

**4** Click *OK*.

The *Select Objects To Migrate* tab shows the object groups available to migrate, along with the number of objects in each group.

**5** Continue with [Section 1.6, “Migrating Objects,” on page 16](#).

## 1.6 Migrating Objects

For details on migrating objects in each group, see the topics below. Although the steps to migrate different types of objects are presented separately, it isn’t necessary to migrate one type of object at a time. You can migrate all data at once or choose what data to migrate. When you migrate inventory data, the administrator-defined fields, local product definitions, and custom report definitions are migrated by default.

When selecting objects to migrate, keep the following in mind:

- ♦ If you have migrated inventory data with the ZENworks 10 Configuration Management Asset Management Services Migration Utility, you cannot migrate objects with the ZENworks 10 Configuration Management (v10.1) Asset Management Services Migration Utility.
- ♦ You can only migrate objects once.
- ♦ You need to migrate inventory data before asset management data.
- ♦ Workstations that have not been inventoried are not migrated. In addition, if the workstation is associated with a contract, the contract-workstation relationship isn’t migrated, either.

If you want to do a staged migration, select a subset of workstations to migrate. Do not migrate asset management data until all staging is complete. For more information about staging, see [“Staging a Migration” on page 17](#).

To migrate the definitions only, see the related topics below:

- ♦ [Section 1.6.1, “Migrating Inventory Data,” on page 17](#)
- ♦ [Section 1.6.2, “Migrating Administrator-Defined Field Definitions,” on page 18](#)
- ♦ [Section 1.6.3, “Migrating Local Product Definitions,” on page 19](#)
- ♦ [Section 1.6.4, “Migrating Asset Management Data,” on page 20](#)
- ♦ [Section 1.6.5, “Migrating Asset Management Data Only,” on page 21](#)
- ♦ [Section 1.6.6, “Migrating License Records,” on page 22](#)
- ♦ [Section 1.6.7, “Migrating Custom Reports,” on page 23](#)

For details about the Migration Console, see [Chapter 2, “Understanding the Migration Console,” on page 27](#).



## 1.6.1 Migrating Inventory Data

When you migrate inventory data, by default you migrate the following:

- ♦ Devices (including workstations marked as deleted, if desired. For more information, see [Section 1.6.1, “Migrating Inventory Data,” on page 17.](#))
- ♦ Device history
- ♦ Local software products
- ♦ Hardware/software components
- ♦ Asset management usage data
- ♦ Inventory and asset management administrator-defined fields (known as *user*-defined fields in ZENworks Asset Management 7.5)
- ♦ Inventory and asset management custom reports

### Staging a Migration

You can do a staged migration by selecting a subset of workstations to migrate. Usage and inventory data is migrated when the workstation is migrated; additional usage and inventory data accumulating in ZENworks Asset Management 7.5 after initial migration of a workstation is not migrated.

---

**NOTE:** Do not migrate asset management data until all staging is complete.

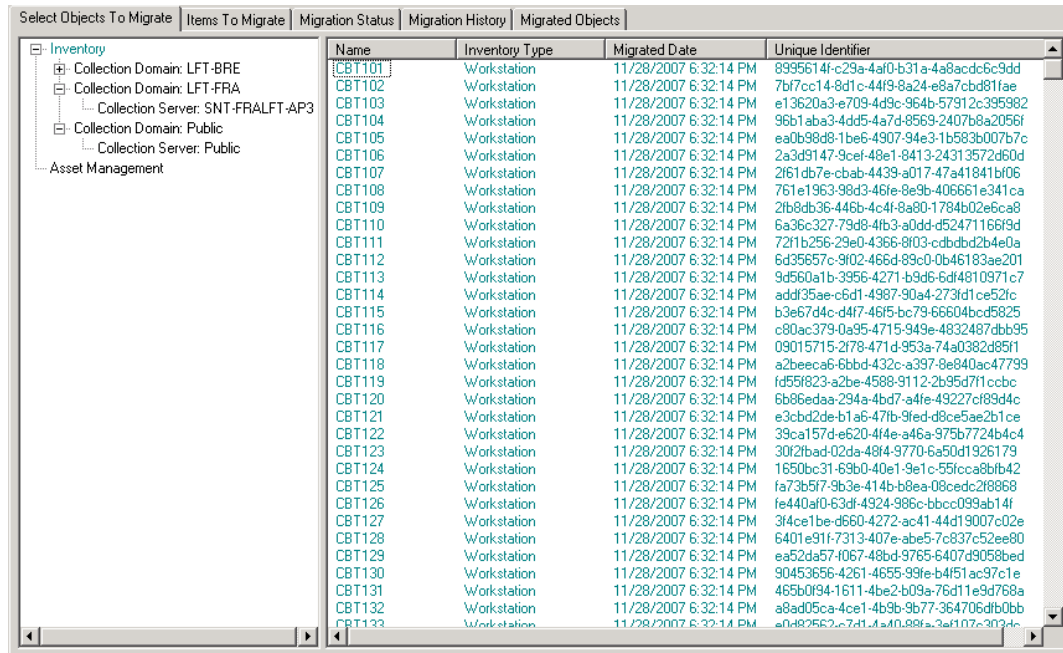
---

### Migrating Deleted Workstations

You can migrate workstations marked as deleted in ZENworks Asset Management 7.5 to ZENworks 10 Configuration Management. After migration, these workstations appear as discovered devices in ZENworks Control Center (*Devices > Discovered > Devices created via ZENworks Asset Management Migration*), but they are filtered out of Asset Management reports. For information on migrating deleted workstations, see [Step 5 on page 18.](#)

### Migrating Inventory Data

- 1 Click *Start > All Programs > Novell ZENworks > ZENworks Asset Management Migration Utility*.
- 2 Log in to your ZENworks Asset Management 7.5 database and the Management Zone for ZENworks 10 Configuration Management as shown in [Section 1.4, “Selecting the Migration Source,” on page 13](#) and [Section 1.5, “Selecting the Migration Destination,” on page 15.](#)
- 3 Click the *Select Objects To Migrate* tab.



4 Click *Inventory* and select the desired collection domain and collection server.

A list of workstations is shown on the right.

5 Select the data to migrate.

- To select all workstations, right-click *Inventory* and select *Migrate All Inventory Data*.
- To select individual workstations, right-click a workstation listed on the right side of the panel and select *Add Item(s) To Migration Queue*. You can Shift+click or Ctrl+click to select more than one item.

---

**NOTE:** To migrate workstations marked as deleted, click *Tools > Options* and select *Migrate Deleted Workstations*.

---

6 (Optional) To remove workstations from the migration list, click the *Items to Migrate* tab, then right-click the workstation and select *Remove Item(s) from Migration Queue*.

7 Click *Start Migration*.

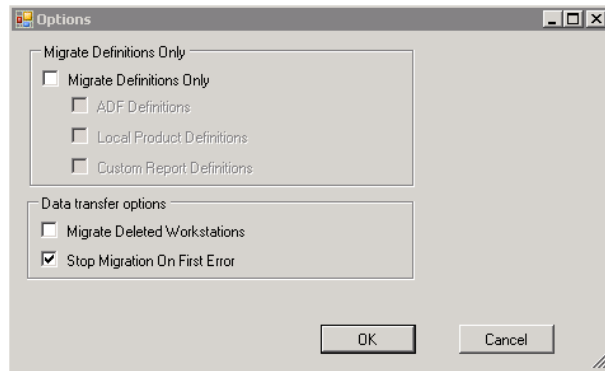
The *Migration Status* tab opens and displays the migration details. Migrated workstations appear as discovered devices in ZENworks Control Center (*Devices > Discovered > Devices created via ZENworks Asset Management Migration*).

## 1.6.2 Migrating Administrator-Defined Field Definitions

Asset management and inventory administrator-defined field definitions are migrated automatically the first time an inventory migration is run. (Asset management administrator-defined fields are known as *user-defined* fields in ZENworks Asset Management 7.5.) If you want to migrate just the administrator-defined fields and not the inventory data, do the following:

1 Click *Start > All Programs > Novell ZENworks > ZENworks Asset Management Migration Utility*.

- 2 Log in to your ZENworks Asset Management 7.5 database and the Management Zone for ZENworks 10 Configuration Management as shown in [Section 1.4, “Selecting the Migration Source,”](#) on page 13 and [Section 1.5, “Selecting the Migration Destination,”](#) on page 15.
- 3 Click *Tools > Options* to open the *Options* window.



- 4 Select *Migrate Definitions Only*.
- 5 Select *ADF Definitions*.
- 6 Click *OK*.
- 7 Right-click *User Defined Fields* and select *Migrate All User Defined Fields*.

The number of user-defined fields is displayed in the *Items To Migrate* tab. To remove the user-defined fields from the list, click the *Items To Migrate* tab, right-click *All User Defined Fields*, and select *Remove 'All User Defined Fields' from migration queue*. User-defined fields cannot be migrated individually.

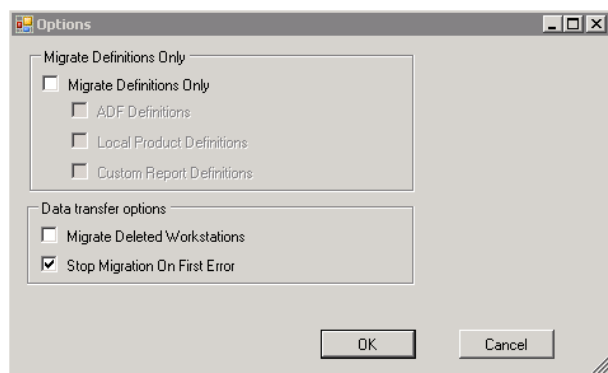
- 8 Click *Start Migration*.

The *Migration Status* tab opens and displays the migration details. Click *Cancel* to stop the process.

### 1.6.3 Migrating Local Product Definitions

Local product definitions are migrated automatically the first time an inventory migration is run. If you want to migrate just the local product definitions and not the inventory data, do the following:

- 1 Click *Start > All Programs > Novell ZENworks > ZENworks Asset Management Migration Utility*.
- 2 Log in to your ZENworks Asset Management 7.5 database and the Management Zone for ZENworks 10 Configuration Management as shown in [Section 1.4, “Selecting the Migration Source,”](#) on page 13 and [Section 1.5, “Selecting the Migration Destination,”](#) on page 15.
- 3 Click *Tools > Options* to open the *Options* window.



- 4 Select *Migrate Definitions Only*.
- 5 Select *Local Product Definitions*.
- 6 Click *OK*.
- 7 Right-click *Local Products* and select *Migrate All Local Product Definitions*.
- 8 (Optional) To remove the local product definitions from the migration list, click *Items to Migrate*, then right-click *All Local Product Definitions* and select *Remove 'All Local Product Definitions' from migration queue*.
- 9 Click *Start Migration*.

The *Migration Status* tab opens and displays the migration details.

## 1.6.4 Migrating Asset Management Data

Migrated asset management data includes the following:

- ♦ Catalog products
- ♦ Discovered products
- ♦ Purchase records
- ♦ Licensed products (For more information on licensed product migration, see [Section 1.6.6, "Migrating License Records," on page 22.](#))
- ♦ Software collections
- ♦ Contracts and date notifications
- ♦ Documents

---

**WARNING:** Do not migrate asset management data until you have migrated all the inventory workstations you intend to migrate.

---

To migrate asset management data:

- 1 Click *Start > All Programs > Novell ZENworks > ZENworks Asset Management Migration Utility*.
- 2 Log in to your ZENworks Asset Management 7.5 database and the Management Zone for ZENworks 10 Configuration Management as shown in [Section 1.4, "Selecting the Migration Source," on page 13](#) and [Section 1.5, "Selecting the Migration Destination," on page 15](#).
- 3 Click the *Select Objects to Migrate* tab.

Select Objects To Migrate	Items To Migrate	Migration Status	Migration History	Migrated Objects
<div> <div>Inventory</div> <ul style="list-style-type: none"> <li>Collection Domain: LFT-BRE</li> <li>Collection Domain: LFT-FRA</li> <li>Collection Server: SNT-FRALFT-AP3</li> <li>Collection Domain: Public</li> <li>Collection Server: Public</li> <li>Asset Management</li> </ul> </div>				
Name	Inventory Type	Migrated Date	Unique Identifier	
CBT101	Workstation	11/28/2007 6:32:14 PM	8995614f-c29a-4a0f-b31a-4a8acdc6c9dd	
CBT102	Workstation	11/28/2007 6:32:14 PM	7b7cc14-8d1c-44f9-8a24-e8a7cbd81fae	
CBT103	Workstation	11/28/2007 6:32:14 PM	e13620a3-e709-4d9c-964b-57912c395982	
CBT104	Workstation	11/28/2007 6:32:14 PM	96b1aba3-4dd5-4a7d-8569-2407b8a2056f	
CBT105	Workstation	11/28/2007 6:32:14 PM	ea0b98d8-1be5-4907-94e3-1b583b007b7c	
CBT106	Workstation	11/28/2007 6:32:14 PM	2a3d9147-9cef-48e1-8413-24313572d60d	
CBT107	Workstation	11/28/2007 6:32:14 PM	2f61db7e-cbab-4439-a017-47a41841bf06	
CBT108	Workstation	11/28/2007 6:32:14 PM	761e1963-98d3-46fe-8e9b-406661e341ca	
CBT109	Workstation	11/28/2007 6:32:14 PM	2fb8db36-446b-4c4f-8a80-1784b02e6ca8	
CBT110	Workstation	11/28/2007 6:32:14 PM	6a36c327-79d8-4fb3-a0dd-d52471166f9d	
CBT111	Workstation	11/28/2007 6:32:14 PM	721fb256-29e0-4366-8f03-cdbdbd2b4e0a	
CBT112	Workstation	11/28/2007 6:32:14 PM	6d35657c-9f02-466d-89c0-0b46183ae201	
CBT113	Workstation	11/28/2007 6:32:14 PM	9d560a1b-3956-4271-b9d6-6df4810971c7	
CBT114	Workstation	11/28/2007 6:32:14 PM	addf35ae-c6d1-4987-90a4-273d1ce521c	
CBT115	Workstation	11/28/2007 6:32:14 PM	b3e67d4c-d47f-46f5-bc79-66604bcd5825	
CBT116	Workstation	11/28/2007 6:32:14 PM	c80ac379-0a95-4715-949e-4832487dbb95	
CBT117	Workstation	11/28/2007 6:32:14 PM	09015715-2f78-471d-953a-74a0382d95f1	
CBT118	Workstation	11/28/2007 6:32:14 PM	a2beeca6-6bbd-432c-a397-8e840ac47799	
CBT119	Workstation	11/28/2007 6:32:14 PM	fd55f823-a2be-4588-9112-2b95d7f1ccbc	
CBT120	Workstation	11/28/2007 6:32:14 PM	6b86edaa-294a-4bd7-a4fe-49227cf89d4c	
CBT121	Workstation	11/28/2007 6:32:14 PM	e3cbd2de-b1a6-47fb-9fed-d8ce5ae2b1ce	
CBT122	Workstation	11/28/2007 6:32:14 PM	39ca157d-e620-4f4e-a46a-975b7724b4c4	
CBT123	Workstation	11/28/2007 6:32:14 PM	30f2fbad-02da-48f4-9770-6a50d1926179	
CBT124	Workstation	11/28/2007 6:32:14 PM	1650bc31-69b0-40e1-9e1c-55fcca8bf42	
CBT125	Workstation	11/28/2007 6:32:14 PM	fa73b57f-9b3e-414b-b8ea-08cedc2f8868	
CBT126	Workstation	11/28/2007 6:32:14 PM	fe440af0-63d1-4924-986c-bbcc099ab14f	
CBT127	Workstation	11/28/2007 6:32:14 PM	3f4ce1be-d660-4272-ac41-44d19007c02e	
CBT128	Workstation	11/28/2007 6:32:14 PM	6401e91f-7313-407e-abe5-7c837c52ee80	
CBT129	Workstation	11/28/2007 6:32:14 PM	ea52da57-0067-48bd-9765-6407d9058bed	
CBT130	Workstation	11/28/2007 6:32:14 PM	90453656-4261-4655-99fe-b4f51ac97c1e	
CBT131	Workstation	11/28/2007 6:32:14 PM	465b0f94-1611-4be2-b09a-76d11e9d768a	
CBT132	Workstation	11/28/2007 6:32:14 PM	a8ad05ca-4ce1-4b9b-9b77-364706dfb0bb	
CBT133	Workstation	11/28/2007 6:32:14 PM	a0d82562-c741-4a40-88fa-3ef107c303dc	

4 Right-click *Asset Management* and select *Migrate All Asset Management Data*.

5 (Optional) Click the *Items to Migrate* tab to see what items will be migrated.

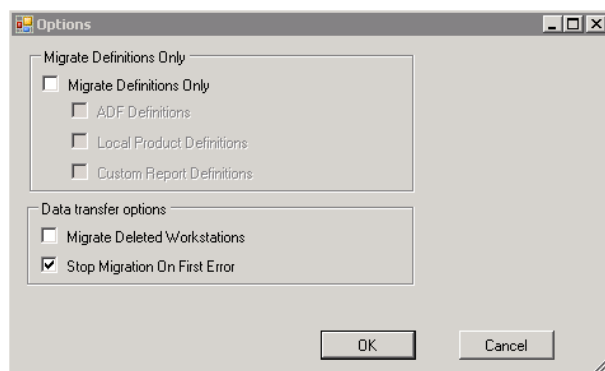
6 Click *Start Migration*.

The *Migration Status* tab opens and displays the migration details.

## 1.6.5 Migrating Asset Management Data Only

If you want to migrate asset management data (see [Section 1.6.4, “Migrating Asset Management Data,”](#) on page 20) plus asset management custom reports and administrator-defined fields, do the following:

- 1 Click *Start > All Programs > Novell ZENworks > ZENworks Asset Management Migration Utility*.
- 2 Log in to your ZENworks Asset Management 7.5 database and the Management Zone for ZENworks 10 Configuration Management as shown in [Section 1.4, “Selecting the Migration Source,”](#) on page 13 and [Section 1.5, “Selecting the Migration Destination,”](#) on page 15.
- 3 Click *Tools > Options* to open the *Options* window.



- 4 Select *Migrate Definitions Only*.
- 5 Select *ADF Definitions*, *Local Product Definitions*, and *Custom Report Definitions*.
- 6 Click *OK*.
- 7 On the *Select Objects to Migrate* tab, do the following:
  - 7a Right-click *User Defined Fields* and select *Migrate All User Defined Fields*.
  - 7b Right-click *Local Products* and select *Migrate All Local Products*.
  - 7c Right-click *Custom Reports* and select *Migrate All Custom Reports*.
- 8 Click *Start Migration* and wait for the migration to finish.
- 9 Repeat **Step 3 on page 21** to open the *Options* window once again.
- 10 Uncheck *Migrate Definitions Only*.
- 11 Click *OK*.
- 12 Click the *Select Objects to Migrate* tab.

Name	Inventory Type	Migrated Date	Unique Identifier
CBT1101	Workstation	11/28/2007 6:32:14 PM	8995614f-c29a-4af0-b31a-4a8acdc6c9dd
CBT1102	Workstation	11/28/2007 6:32:14 PM	7bf7cc14-8d1c-44f9-8a24-e8a7cbd81fae
CBT1103	Workstation	11/28/2007 6:32:14 PM	e13620a3-e709-4d9c-964b-57912c395982
CBT1104	Workstation	11/28/2007 6:32:14 PM	96b1aba3-4dd5-4a7d-8569-2407b8a2056f
CBT1105	Workstation	11/28/2007 6:32:14 PM	ea0b98d8-1be6-4907-94e3-1b583b007b7c
CBT1106	Workstation	11/28/2007 6:32:14 PM	2a3d9147-9cef-48e1-8413-24313572d60d
CBT1107	Workstation	11/28/2007 6:32:14 PM	2f61db7e-cbab-4439-a017-47a41841bf06
CBT1108	Workstation	11/28/2007 6:32:14 PM	761e1963-98d3-461e-8e9b-406661e341ca
CBT1109	Workstation	11/28/2007 6:32:14 PM	2fb8db36-446b-4c4f-8a80-1784b02e6ca8
CBT1110	Workstation	11/28/2007 6:32:14 PM	6a36c327-79d8-4fb3-a0dd-d52471116f9d
CBT1111	Workstation	11/28/2007 6:32:14 PM	72f1b256-29e0-4366-8f03-cdbdbd2b4e0a
CBT1112	Workstation	11/28/2007 6:32:14 PM	6d35657c-9f02-466d-89c0-0b46183ae201
CBT1113	Workstation	11/28/2007 6:32:14 PM	9d560a1b-3956-4271-b9d6-6df4810971c7
CBT1114	Workstation	11/28/2007 6:32:14 PM	addf35ae-c6d1-4987-90a4-273fd1ce52fc
CBT1115	Workstation	11/28/2007 6:32:14 PM	b3e67d4c-d4f7-46f5-bc79-66604bcd5825
CBT1116	Workstation	11/28/2007 6:32:14 PM	c90ac379-0a95-4715-949e-4832487dbb95
CBT1117	Workstation	11/28/2007 6:32:14 PM	09015715-2f78-471d-953a-74a0382d85f1
CBT1118	Workstation	11/28/2007 6:32:14 PM	a2beeca6-6bbd-432c-a397-9e840ac47799
CBT1119	Workstation	11/28/2007 6:32:14 PM	fd59f823-a2be-4588-9112-2b95d7f1ccbc
CBT1120	Workstation	11/28/2007 6:32:14 PM	6b86edaa-294a-4bd7-a4fe-49227cf89d4c
CBT1121	Workstation	11/28/2007 6:32:14 PM	e3cbd2de-b1a6-47fb-9fed-d8ce5ae2b1ce
CBT1122	Workstation	11/28/2007 6:32:14 PM	39ca157d-e620-4f4e-a46a-975b7724b4c4
CBT1123	Workstation	11/28/2007 6:32:14 PM	30f2bad-02da-48f4-9770-6a50d1926179
CBT1124	Workstation	11/28/2007 6:32:14 PM	1650bc31-68b0-40e1-9e1c-55fcca8bf642
CBT1125	Workstation	11/28/2007 6:32:14 PM	fa73b5f7-9b3e-414b-b8ea-08cedc2f8868
CBT1126	Workstation	11/28/2007 6:32:14 PM	fe440af0-63df-4924-986c-bbcc099ab14f
CBT1127	Workstation	11/28/2007 6:32:14 PM	3f4ce1be-d660-4272-ac41-44d19007c02e
CBT1128	Workstation	11/28/2007 6:32:14 PM	6401e91f-7313-407e-abe5-7c837c52ee80
CBT1129	Workstation	11/28/2007 6:32:14 PM	ea52da57-4067-48bd-9765-6407d9058bed
CBT1130	Workstation	11/28/2007 6:32:14 PM	90453656-4261-4655-939e-b4f51ac97c1e
CBT1131	Workstation	11/28/2007 6:32:14 PM	465b0f94-1611-4be2-b09a-76d11e9d768a
CBT1132	Workstation	11/28/2007 6:32:14 PM	a8ad05ca-4ce1-4b9b-9b77-364706dfb0bb
CBT1133	Workstation	11/28/2007 6:32:14 PM	a0482562-c7d1-4a40-88fa-3ef107c302dc

- 13 Right-click *Asset Management* and select *Migrate All Asset Management Data*.
- 14 Click *Start Migration*.

The *Migration Status* tab opens and displays the migration details.

## 1.6.6 Migrating License Records

License records in ZENworks Asset Management 7.5 have been replaced in ZENworks 10 Configuration Management Asset Management Services with licensed products, which contain license entitlements. License entitlements contain the information required for compliance and proof of ownership.

When a ZENworks Asset Management 7.5 license record is migrated to ZENworks 10 Configuration Management Asset Management Services, a licensed product with a single license entitlement is created in ZENworks 10 Configuration Management Asset Management Services. The license entitlement contains all the compliance and proof of ownership information previously associated with the ZENworks Asset Management 7.5 license record, including the following:

- ♦ Reconciled discovered products
- ♦ Reconciled catalog products (and associated purchase records)
- ♦ Attached documents
- ♦ Associated contracts

If you have ZENworks Asset Management 7.5 license records with version upgrades, all license records in the upgrade path are consolidated in a single ZENworks 10 Configuration Management Asset Management Services licensed product with multiple license entitlements, one entitlement for each license record in the upgrade path.

In ZENworks Asset Management 7.5, version upgrades can be linked to multiple sources, but in ZENworks 10 Configuration Management Asset Management Services, version upgrade license entitlements can only be linked to a single underlying entitlement. If you have upgrades that have been linked to multiple sources in ZENworks Asset Management 7.5, you need to review or modify the associated licensed products and license entitlements in ZENworks 10 Configuration Management Asset Management Services after migration.

## 1.6.7 Migrating Custom Reports

The following topics provide more information on migrating custom reports:

- ♦ [“Reports That Are Migrated” on page 23](#)
- ♦ [“Reports That Are Not Migrated” on page 24](#)
- ♦ [“Migrating Custom Reports from ZENworks Asset Management” on page 25](#)

### Reports That Are Migrated

The following ZENworks Asset Management 7.5 custom reports can be migrated to ZENworks 10 Configuration Management Asset Management Services:

- ♦ Workstation inventory reports
- ♦ Software usage reports
- ♦ Software management reports
- ♦ Contract management reports

In addition, Custom Report Alerts/Schedules, along with the e-mail list from ZENworks Asset Management 7.5, are migrated with custom reports. After migration, ZENworks 10 Configuration Management evaluates each report to determine if it needs to be run. The option to attach the report results in CSV format is changed during migration to attach the results in an Excel format.

You can view schedule information for a report in ZENworks Control Center by navigating to the specific report page and clicking *Schedule/Notification*. You can view the e-mail list by clicking *Configuration > Asset Inventory*.

## Reports That Are Not Migrated

The following reports are not migrated:

- ♦ Reports containing the following fields:
  - ♦ Workstation Is Checked Out
  - ♦ Workstation Checked In/Out Date
  - ♦ Product License Count
  - ♦ Product License ID
  - ♦ Product License Name
  - ♦ (Product) License Required
  - ♦ License Platform
  - ♦ Last Scan Date/Time
  - ♦ Default Gateway (Workstation)
  - ♦ Subnet Mask (Workstation)
  - ♦ Over/Under (Summary) (Software Compliance)
  - ♦ Any fields related to Connection Information, Collection Servers, or Collection Domains

If you want to migrate a report containing one or more of the fields above, create a version of the report in ZENworks Asset Management 7.5 with those fields removed and then migrate that version. If you don't remove those fields, no part of the report is migrated. Keep in mind that reports can only be migrated once.

- ♦ Custom reports distributed with ZENworks Asset Management 7.5. Equivalent reports are available in ZENworks 10 Configuration Management. If you have made changes to these reports in ZENworks Asset Management 7.5 and want to keep those changes, make a copy before migrating the reports, and the copy is migrated.
- ♦ Stored report results (Stored report results can be viewed in ZENworks Asset Management 7.5.)
- ♦ Report folder rights. By default, all ZENworks 10 Configuration Management users have read-only access to the migrated report folders.
- ♦ Reports with the following focus are not migrated:
  - ♦ Connection Information
  - ♦ Component Filtering
  - ♦ Hardware - DMI
  - ♦ License Allocation - Demographic
  - ♦ License Allocation - Workstation



- ♦ Licenses - Associated Documents
- ♦ Purchase/License/Inventory Infrastructure
- ♦ Reports with a criteria of Workstation in Report or Workstation not in Report when the following criteria are met:
  - ♦ The referenced report will not be migrated and the reference report is not one of the predefined reports distributed with ZENworks 10 Configuration Management.
  - ♦ The custom report is based on a predefined report whose report definition has been modified or deleted in ZENworks 10 Configuration Management.

---

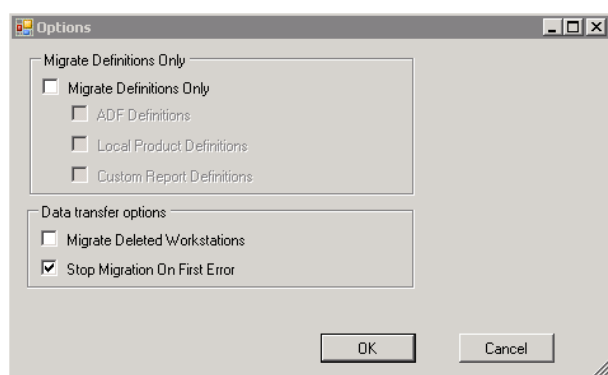
**NOTE:** A bug in ZENworks Asset Management 7.5 can cause an error when Hardware – System Board reports are imported into ZENworks 10 Configuration Management. This is because in ZENworks Asset Management 7.5, both Bus 1 Slot and Bus 2 Slot columns are linked to the Bus 2 Slot column in the database. Reports containing both of these columns cause the following error message: `NC_SystemBoard.Bus2Slots is not unique`. To resolve this, go to the report definition and remove one of the Bus 2 Slot columns from the list of selected columns.

---

## Migrating Custom Reports from ZENworks Asset Management

Custom reports are migrated automatically the first time an inventory migration is run. If you want to migrate just the custom reports and not the inventory data, do the following:

- 1 Click *Start > All Programs > Novell ZENworks > ZENworks Asset Management Migration Utility*.
- 2 Log in to your ZENworks Asset Management 7.5 database and the Management Zone for ZENworks 10 Configuration Management as shown in [Section 1.4, “Selecting the Migration Source,”](#) on page 13 and [Section 1.5, “Selecting the Migration Destination,”](#) on page 15.
- 3 Click *Tools > Options* to open the *Options* window.



- 4 Select *Migrate Definitions Only*.
- 5 Select *Custom Report Definitions*.

Reports are migrated in a group; they cannot be migrated individually. Administrator-defined field definitions should be migrated with or before custom report definitions. If administrator-defined field definitions are not migrated, any custom report containing administrator-defined field columns is blocked from migration.

**6** Click *OK*.

**7** Click *Start Migration*.

The *Migration Status* tab opens and displays the migration details. Migrated folders have the prefix `migrate` added to the folder name.

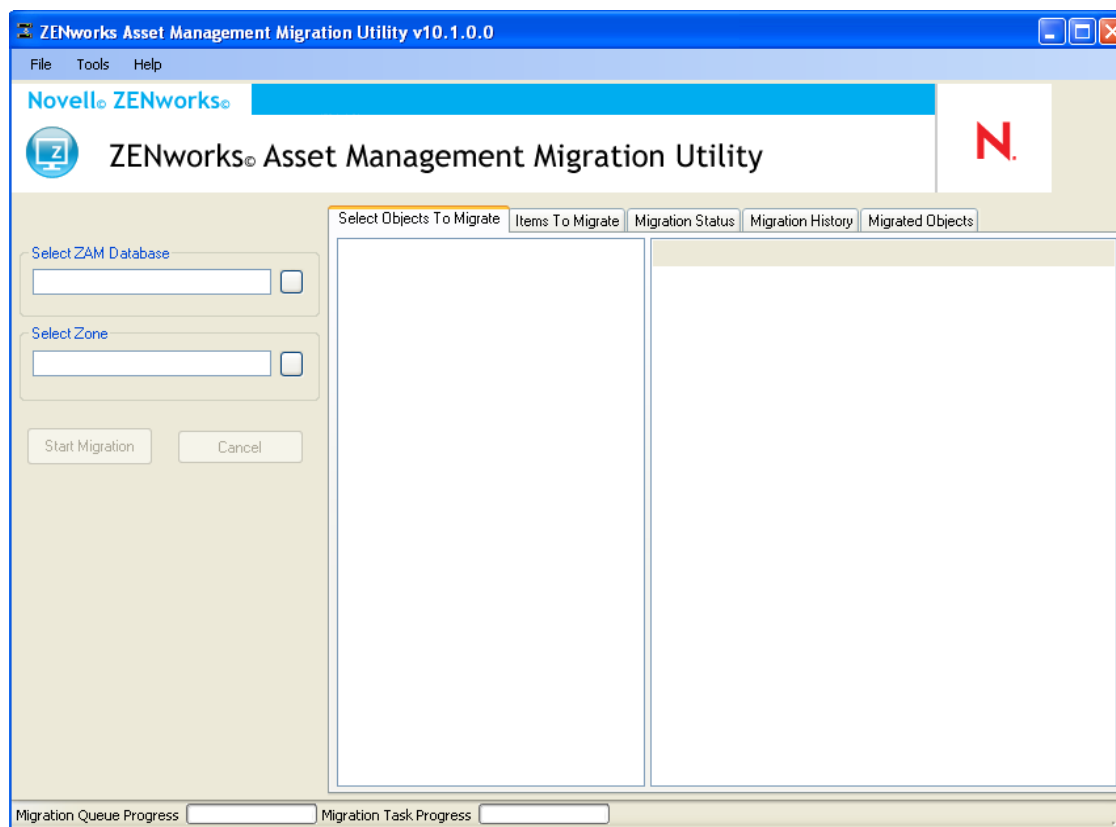
# Understanding the Migration Console

# 2

The following sections describe the Novell® ZENworks® 10 Configuration Management Asset Management Services Migration Utility migration console and how to use it:

- ♦ Section 2.1, “Menu Options,” on page 28
- ♦ Section 2.2, “Select Objects to Migrate Tab,” on page 29
- ♦ Section 2.3, “Items to Migrate Tab,” on page 30
- ♦ Section 2.4, “Migration Status Tab,” on page 30
- ♦ Section 2.5, “Migration History Tab,” on page 30
- ♦ Section 2.6, “Migrated Objects Tab,” on page 30
- ♦ Section 2.7, “Select ZAM Database Field,” on page 31
- ♦ Section 2.8, “Select Zone Field,” on page 31
- ♦ Section 2.9, “Start Migration Button,” on page 32
- ♦ Section 2.10, “Cancel Button,” on page 32
- ♦ Section 2.11, “Migration Queue Progress,” on page 32
- ♦ Section 2.12, “Migration Task Progress,” on page 32

**Figure 2-1** *The Migration Console*



## 2.1 Menu Options

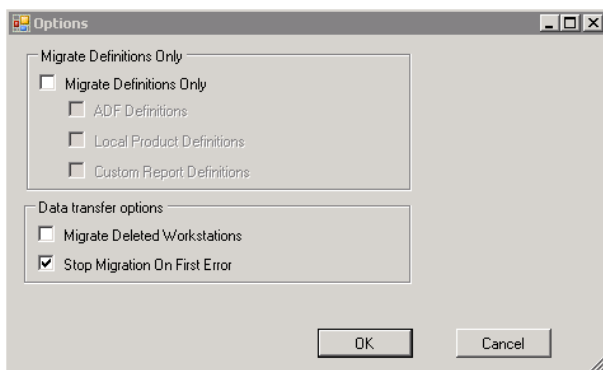
The following options are available:

- ♦ **File:** Click *File > Exit* to exit the migration console.
- ♦ **Tools:** Click *Tools > Options* to open the *Options* window, where you select the object definitions you want to migrate: administrator-defined field definitions, local product definitions, or custom report definitions. Select these options only if you will not be migrating inventory data. If you migrate inventory data, these definitions are migrated by default. For more information, see [Section 1.6, “Migrating Objects,” on page 16](#).

The *Options* window also allows you to select data transfer options:

- ♦ **Migrate Deleted Workstations:** Select this option to migrate workstations that are marked for deletion in ZENworks® Asset Management 7.5.
- ♦ **Stop Migration On First Error:** Select this option to stop the migration process on the first encountered error.

**Figure 2-2** *The Options Window*



## 2.2 Select Objects to Migrate Tab

Click the *Select Objects To Migrate* tab to display the objects you can migrate. For information on migrating these objects, see [Section 1.6, “Migrating Objects,” on page 16](#).

- ♦ **Inventory:** Inventory data for the enterprise. Use these objects to migrate inventory data. For more information, see [Section 1.6.1, “Migrating Inventory Data,” on page 17](#).
- ♦ **Administrator-Defined Fields:** Custom fields defined in ZENworks Asset Management 7.5. (Asset management administrator-defined fields are known as *user*-defined fields in ZENworks Asset Management 7.5.) You can choose to migrate just the administrator-defined field definitions or the field definitions along with the data values. For more information, see [Section 1.6.2, “Migrating Administrator-Defined Field Definitions,” on page 18](#).
- ♦ **Local Products:** Software products created and identified to be tracked as part of your inventory. Only the definitions are migrated, not the inventory data. For more information, see [Section 1.6.3, “Migrating Local Product Definitions,” on page 19](#).
- ♦ **Asset Management:** Asset management data for the enterprise. Use these objects to migrate asset management data. For more information, see [Section 1.6.4, “Migrating Asset Management Data,” on page 20](#).
- ♦ **Custom Reports:** Inventory and asset management custom reports defined in ZENworks Asset Management 7.5. Use these objects to migrate custom reports. For more information, see [Section 1.6.7, “Migrating Custom Reports,” on page 23](#).
- ♦ **Deleted Workstations:** Workstations that are marked as deleted in ZENworks Asset Management 7.5. Use these objects to migrate the workstations that are marked as deleted. For more information, see [Section 1.6.1, “Migrating Inventory Data,” on page 17](#).

Click a collection server to display the workstations in that group in the panel on the right. Click *Deleted Workstations* to display the workstations that are marked as deleted in ZENworks Asset Management 7.5 in the panel on the right. The workstation Name, Inventory Type, Migrated Date, and Unique Identifier are displayed.

**Figure 2-3** *Select Objects to Migrate*

Name	Inventory Type	Migrated Date	Unique Identifier
CBT1101	Workstation	11/28/2007 6:32:14 PM	8995614f-c29a-4af0-b31a-4a8acdc6c9dd
CBT1102	Workstation	11/28/2007 6:32:14 PM	7b7cc14-8d1c-44f9-8a24-e8a7cbd81fae
CBT1103	Workstation	11/28/2007 6:32:14 PM	e13620a3-e709-4d9c-964b-57912c395982
CBT1104	Workstation	11/28/2007 6:32:14 PM	96b1aba3-4dd5-4a7d-8569-2407b8a2056f
CBT1105	Workstation	11/28/2007 6:32:14 PM	ea0b98d8-1be6-4907-94e3-1b583b007b7c
CBT1106	Workstation	11/28/2007 6:32:14 PM	2a3d9147-9cef-48e1-8413-24313572d60d
CBT1107	Workstation	11/28/2007 6:32:14 PM	2f61db7e-cbab-4439-a017-47a41841bf06
CBT1108	Workstation	11/28/2007 6:32:14 PM	761e1963-98d3-46fe-8e9b-406661e341ca
CBT1109	Workstation	11/28/2007 6:32:14 PM	2fb8db36-446b-4c4f-8a80-1784b02e6ca8
CBT1110	Workstation	11/28/2007 6:32:14 PM	6a36c327-79d8-4fb3-a0dd-d52471166f9d
CBT1111	Workstation	11/28/2007 6:32:14 PM	72f1b256-29e0-4366-8f03-cdbdbd2b4e0a
CBT1112	Workstation	11/28/2007 6:32:14 PM	6d35657c-9f02-466d-89c0-0b46183ae201
CBT1113	Workstation	11/28/2007 6:32:14 PM	9d560a1b-3956-4271-b9d6-6df4810971c7
CBT1114	Workstation	11/28/2007 6:32:14 PM	addf35ae-c6d1-4987-90a4-273fd1ce52fc
CBT1115	Workstation	11/28/2007 6:32:14 PM	b3e67d4c-d4f7-46f5-bc79-66604bcc5825
CBT1116	Workstation	11/28/2007 6:32:14 PM	c80ac379-0a95-4715-949e-483248dbb95
CBT1117	Workstation	11/28/2007 6:32:14 PM	09015715-2f78-471d-953a-74a0382d85f1
CBT1118	Workstation	11/28/2007 6:32:14 PM	a2beeca6-6bbd-432c-a397-8e840ac47799
CBT1119	Workstation	11/28/2007 6:32:14 PM	fd55823-a2be-4588-9112-2b95d7f1ccbc
CBT1120	Workstation	11/28/2007 6:32:14 PM	6b86edaa-294a-4bd7-a4fe-49227cf189d4c
CBT1121	Workstation	11/28/2007 6:32:14 PM	e3cbd2de-b1a6-47fb-9fed-d8ce5ae2b1ce
CBT1122	Workstation	11/28/2007 6:32:14 PM	39ca157d-e620-4f4e-a46a-975b7724b4c4
CBT1123	Workstation	11/28/2007 6:32:14 PM	30f2fbad-02da-48f4-9770-6a50d1926179
CBT1124	Workstation	11/28/2007 6:32:14 PM	1650bc31-69b0-40e1-9e1c-55fcca8bf42
CBT1125	Workstation	11/28/2007 6:32:14 PM	fa73b5f7-9b3e-414b-b8ea-08cedc218868
CBT1126	Workstation	11/28/2007 6:32:14 PM	fe440af0-63df-4924-986c-bbcc099ab14f
CBT1127	Workstation	11/28/2007 6:32:14 PM	3f4ce1be-d660-4272-ac41-44d19007c02e
CBT1128	Workstation	11/28/2007 6:32:14 PM	6401e91f-7313-407e-abe5-7c837c52ee80
CBT1129	Workstation	11/28/2007 6:32:14 PM	ea52da57-f067-48bd-9765-6407d9058bed
CBT1130	Workstation	11/28/2007 6:32:14 PM	90453656-4261-4655-99fe-b4f51ac97c1e
CBT1131	Workstation	11/28/2007 6:32:14 PM	465b0f94-1611-4be2-b09a-76d11e9d768a
CBT1132	Workstation	11/28/2007 6:32:14 PM	a8ad05ca-4ce1-4b9b-9b77-364706dfb0bb
CBT1133	Workstation	11/28/2007 6:32:14 PM	e0d82562-c7d1-4a40-88fa-3ef107c3034c

## 2.3 Items to Migrate Tab

The *Items to Migrate* tab shows the name, object type, and the unique identifier of each selected object. Right-click an object and select *Remove Item(s) from Migration Queue* to remove the object from the migration list.

## 2.4 Migration Status Tab

When you migrate an object, you are automatically taken to the *Migration Status* tab, which shows the progress and details of the migration.

## 2.5 Migration History Tab

The *Migration History* tab shows what objects have been migrated, along with the object type, status, and migration date. To see the detailed status of a specific migrated object, right-click the object and select *Detailed Status*. The *Migration Status* tab opens with details about the migration. To see a detailed list of migrated objects, right-click the object and select *Migrated Objects*. The *Migrated Objects* tab opens with a detailed list of migrated objects.

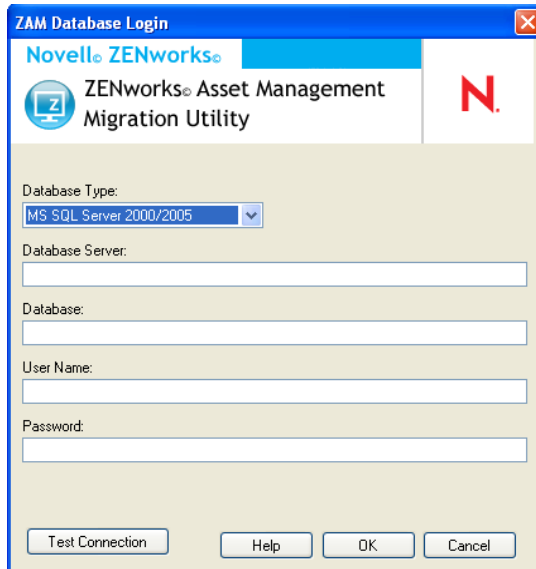
## 2.6 Migrated Objects Tab

The *Migrated Objects* tab shows the objects that have been successfully migrated, including the object type, migrated date, and the object's unique identifier.

## 2.7 Select ZAM Database Field

The *Select ZAM Database* field shows your source database, which is your ZENworks Asset Management 7.5 database. Click the button to the right of the field to open the *ZAM Database Login* dialog box, where you can log in to your source database.

**Figure 2-4** *ZAM Database Login*

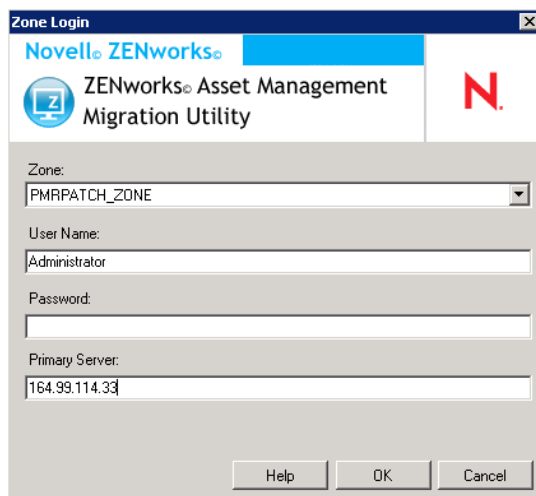


The **ZAM Database Login** dialog box is titled "Novell ZENworks ZENworks Asset Management Migration Utility". It features a "Database Type:" dropdown menu set to "MS SQL Server 2000/2005". Below this are input fields for "Database Server:", "Database:", "User Name:", and "Password:". At the bottom, there are four buttons: "Test Connection", "Help", "OK", and "Cancel".

## 2.8 Select Zone Field

The *Select Zone* field shows the migration destination, which is your Management Zone for ZENworks 10 Configuration Management. Click the button to the right of the field to open the *Zone Login* dialog box, where you can log in to your destination database.

**Figure 2-5** *Zone Login*



The **Zone Login** dialog box is titled "Novell ZENworks ZENworks Asset Management Migration Utility". It features a "Zone:" dropdown menu set to "PMRPATCH\_ZONE". Below this are input fields for "User Name:" (containing "Administrator"), "Password:", and "Primary Server:" (containing "164.99.114.33"). At the bottom, there are three buttons: "Help", "OK", and "Cancel".

## 2.9 Start Migration Button

After you select the objects you want to migrate, click *Start Migration* to begin the migration process.

## 2.10 Cancel Button

The *Cancel* button stops the migration process at the point when you click it. Objects that have already migrated when the *Cancel* button is clicked are not rolled back.

## 2.11 Migration Queue Progress

Located at the bottom of the console window, this indicator shows the progress of the migration queue.

## 2.12 Migration Task Progress

Located at the bottom of the console window, this indicator shows the progress of the migration task.



# Documentation Updates

# A

This section contains information on documentation content changes that were made in this *System Administration Reference* after the initial release of Novell® ZENworks® 10 Configuration Management. The changes are listed according to the date they were published.

The documentation for this product is provided on the Web in two formats: HTML and PDF. The HTML and PDF documentation are both kept up-to-date with the changes listed in this section.

If you need to know whether a copy of the PDF documentation that you are using is the most recent, the PDF document includes a publication date on the title page.

The documentation was updated on the following dates:

- ♦ **Section A.1, “August 6, 2008: SP1 (10.1),” on page 33**

## A.1 August 6, 2008: SP1 (10.1)

Updates were made to the following sections:

Location	Update
Section 1.6.4, “Migrating Asset Management Data,” on page 20	Added a section describing how to migrate asset management data.
Section 1.6.5, “Migrating Asset Management Data Only,” on page 21	Added a section describing how to migrate asset management data only.
Section 1.6.6, “Migrating License Records,” on page 22	Added a section describing how to migrate license records.
Section 1.6.7, “Migrating Custom Reports,” on page 23	Added a section describing how to migrate asset management custom reports.
“Glossary” on page 35	Added a glossary of terms.



# Glossary

## **administrator-defined field**

For asset inventory, a field that allows you to create custom user, workstation, component, or product fields. For Asset Management Services, you can create contract or licensed product fields. In ZENworks® Asset Management 7.5, administrator-defined fields are known as *user-defined* fields.

## **asset management data**

Data that includes the following:

- Asset management usage data
- Asset management custom reports
- Asset management administrator-defined fields
- Catalog products
- Discovered products
- Purchase records
- Licensed products
- Software collections
- Contracts and date notifications
- Documents

## **collection domain**

Used in ZENworks Asset Management 7.5 to organize your enterprise into logical groups.

## **collection server**

Software that resides on a specific machine and is responsible for collecting inventory data from a selected group of workstations and loading it into a central inventory database.

## **custom report**

An asset management or inventory report that can be tailored to a specific function.

## **deleted workstation**

A device that has been marked for deletion in ZENworks Asset Management 7.5. A device marked for deletion stays in the database with all its attributes, history, and components until it is purged. When it is purged, it is removed from the inventory database along with all of its associated data.

## **device**

In ZENworks 10 Configuration Management, a device is a workstation or server; in ZENworks Asset Management 7.5, a device is a network-discovered device.

## **inventory data**

Data that includes the following:

- Devices
- Device history
- Local software products

- Hardware and software components
- Administrator-defined fields
- Custom reports

**local product**

A product that has been defined so that it can be identified in an inventory scan.

**usage data**

Data related to inventory, including hardware components, software components, user name, hours used, and so on.

**user-defined field**

See “**administrator-defined field**” on page 35. In ZENworks Asset Management 7.5, asset management administrator-defined fields are known as *user-defined* fields.