

Personality Migration Reference

Novell® ZENworks® 11

Support Pack 1

August 08 2011

www.novell.com



Legal Notices

Novell, Inc., makes no representations or warranties with respect to the contents or use of this documentation, and specifically disclaims any express or implied warranties of merchantability or fitness for any particular purpose. Further, Novell, Inc., reserves the right to revise this publication and to make changes to its content, at any time, without obligation to notify any person or entity of such revisions or changes.

Further, Novell, Inc., makes no representations or warranties with respect to any software, and specifically disclaims any express or implied warranties of merchantability or fitness for any particular purpose. Further, Novell, Inc., reserves the right to make changes to any and all parts of Novell software, at any time, without any obligation to notify any person or entity of such changes.

Any products or technical information provided under this Agreement may be subject to U.S. export controls and the trade laws of other countries. You agree to comply with all export control regulations and to obtain any required licenses or classification to export, re-export or import deliverables. You agree not to export or re-export to entities on the current U.S. export exclusion lists or to any embargoed or terrorist countries as specified in the U.S. export laws. You agree to not use deliverables for prohibited nuclear, missile, or chemical biological weaponry end uses. See the [Novell International Trade Services Web page \(http://www.novell.com/info/exports/\)](http://www.novell.com/info/exports/) for more information on exporting Novell software. Novell assumes no responsibility for your failure to obtain any necessary export approvals.

Copyright © 2008-2011 Novell, Inc. All rights reserved. No part of this publication may be reproduced, photocopied, stored on a retrieval system, or transmitted without the express written consent of the publisher.

Novell, Inc.
1800 South Novell Place
Provo, UT 84606
U.S.A.
www.novell.com

Online Documentation: To access the latest online documentation for this and other Novell products, see the [Novell Documentation Web page \(http://www.novell.com/documentation\)](http://www.novell.com/documentation).

Novell Trademarks

For Novell trademarks, see [the Novell Trademark and Service Mark list \(http://www.novell.com/company/legal/trademarks/tmlist.html\)](http://www.novell.com/company/legal/trademarks/tmlist.html).

Third-Party Materials

All third-party trademarks are the property of their respective owners.

Contents

| | |
|---|-----------|
| About This Guide | 7 |
| 1 What Is Novell ZENworks Personality Migration? | 9 |
| 1.1 Migrating User Accounts | 9 |
| 1.2 Migrating System Settings | 10 |
| 1.3 Migrating Application Settings | 10 |
| 1.4 Migrating Files and Folders | 10 |
| 2 Installing ZENworks Personality Migration | 11 |
| 2.1 System Requirements | 11 |
| 2.2 Prerequisite | 11 |
| 2.3 Installing ZENworks Personality Migration on Windows | 11 |
| 2.4 Installing ZENworks Personality Migration by Using ZENworks Bundles | 12 |
| 2.5 Installing the ZENworks Personality Migration Core | 12 |
| 2.6 Installation Options | 13 |
| 3 Uninstalling Personality Migration | 15 |
| 3.1 Uninstalling Personality Migration by Using the ZENworksPersonalityMigration.exe file | 15 |
| 3.2 Uninstalling Personality Migration by Using the Command Line Utility | 15 |
| 3.3 Uninstalling Personality Migration by Using Windows Add or Remove Programs | 15 |
| 4 Manually Migrating Personality Settings | 17 |
| 4.1 Storing a User's Personality Settings and Data | 17 |
| 4.1.1 Transferring Data by Using Direct Mode | 21 |
| 4.1.2 Transferring Data by Using File Mode | 22 |
| 4.2 Applying a User's Personality Settings and Data | 22 |
| 5 Automatically Migrating Personality Settings | 27 |
| 5.1 Creating a Personality Template | 27 |
| 5.1.1 Starting the Template Builder | 27 |
| 5.1.2 Using the Template Builder to Create a Template | 28 |
| 5.2 Modifying an Existing Template | 38 |
| 5.3 Automatically Migrating Personality Settings | 38 |
| 5.4 Migrating Personality Settings by Using the Command Prompt | 39 |
| 5.5 Command Prompt Options to Store and Apply Personalities | 40 |
| A Best Practices | 41 |
| A.1 Storing and Applying Personalities | 41 |
| A.2 Setting the Length of the Computer Name | 41 |

| | |
|--|-----------|
| B Troubleshooting Personality Migration | 43 |
| C Migration Settings | 45 |
| C.1 Migrating E-mail Accounts and Profiles | 46 |
| C.1.1 Migrating Profiles | 46 |
| C.1.2 Migrating Advanced E-mail Options | 46 |
| C.2 Personalizing Outlook | 47 |
| C.2.1 Nick Name Cache | 47 |
| C.2.2 Reading Pane | 47 |
| C.3 Migrating Custom Views | 47 |
| C.4 Migrating Rules and Alerts | 48 |
| C.5 Migrating Junk E-mail options | 48 |
| C.6 Migrating E-mail Security and Privacy options | 48 |
| C.7 Migrating Signatures | 49 |
| C.8 Migrating Spelling and Auto Correction options | 49 |
| D Supported Settings in Personality Migration | 51 |
| D.1 System Settings | 51 |
| D.2 Application Settings | 52 |
| D.2.1 Adobe Applications | 52 |
| D.2.2 Corel Applications | 53 |
| D.2.3 IBM Applications | 53 |
| D.2.4 Microsoft Applications | 53 |
| D.2.5 Palm Applications | 55 |
| D.2.6 Qualcomm Applications | 55 |
| D.2.7 Research in Motion Applications | 55 |
| D.2.8 Sun Applications | 56 |
| D.2.9 America Online Applications | 56 |
| D.2.10 GAIM Applications | 56 |
| D.2.11 Mozilla Foundation Applications | 57 |
| D.2.12 OpenOffice.org Applications | 59 |
| E Understanding Variables | 61 |
| F Cross-User Migration Scenarios | 65 |
| F.1 Migration Scenarios If the PNP file has the personalities of all users | 65 |
| F.2 Migration Scenarios If the PNP file has the personality of the currently logged-in user. | 66 |
| F.3 Migration Scenarios If the PNP File has the Personality of a Specific User. | 67 |
| F.4 Migration Scenarios If the PNP File has the Personalities of Multiple Specific Users | 69 |
| G Documentation Updates | 71 |
| G.1 August 08, 2011: 11 SP1 | 71 |

About This Guide

This *Novell ZENworks Configuration Personality Migration Reference* consists of conceptual information to help you install and use Novell ZENworks Personality Migration.

The sections include:

- ♦ Chapter 1, “What Is Novell ZENworks Personality Migration?,” on page 9
- ♦ Chapter 2, “Installing ZENworks Personality Migration,” on page 11
- ♦ Chapter 4, “Manually Migrating Personality Settings,” on page 17
- ♦ Chapter 5, “Automatically Migrating Personality Settings,” on page 27
- ♦ Appendix A, “Best Practices,” on page 41
- ♦ Appendix B, “Troubleshooting Personality Migration,” on page 43
- ♦ Appendix C, “Migration Settings,” on page 45
- ♦ Appendix D, “Supported Settings in Personality Migration,” on page 51
- ♦ Appendix F, “Cross-User Migration Scenarios,” on page 65

Audience

This guide is intended for network administrators and IT professionals who manage network resources, and who want to use ZENworks Personality Migration to preserve the applications and configurations on network workstations when users begin using new hardware.

Feedback

We want to hear your comments and suggestions about this manual and the other documentation included with this product. Please use the User Comments feature at the bottom of each page of the online documentation.

Additional Documentation

ZENworks 11 SP1 is supported by other documentation (in both PDF and HTML formats) that you can use to learn about and implement the product. For additional documentation, see the [ZENworks 11 SP1 documentation Web site \(http://www.novell.com/documentation/zenworks11/\)](http://www.novell.com/documentation/zenworks11/).

What Is Novell ZENworks Personality Migration?

1

Novell ZENworks Personality Migration is part of the Novell ZENworks Configuration Management product line.

A personality is a collection of applications and system settings that a user commonly uses on a device. Typical settings can be desktop wallpaper, e-mail account settings, browser proxy settings, files and folders, archived e-mails, Microsoft office templates, Microsoft Office macros, etc.

ZENworks Personality Migration provides a way to automate this process, both on a standalone device or from a centrally managed console. The process significantly reduces the time and effort required in setting up or reconfiguring a desktop for users. This is particularly useful while provisioning new desktops and applications.

ZENworks Personality Migration allows you to store the personality of a Windows user and migrate the personality to another Windows user. For enterprise-scale migrations, you can use ZENworks Configuration Management to distribute Directive bundles to store and apply personality settings to the users.

The Personality Migration utility is provided with ZENworks Configuration Management. For more information on installing the utility, see [Chapter 2, “Installing ZENworks Personality Migration,” on page 11](#).

The utility allows you to:

- ◆ Store the personality of one or more users on a Windows device to a compressed and password-protected personality file.
- ◆ Apply the personality settings from a personality file to a Windows desktop.
- ◆ Directly migrate the personality data from the desktops of one or more users on a Windows device to the users on another Windows device without any intermediate file, if the two devices are interconnected.

Review the following sections:

- ◆ [Section 1.1, “Migrating User Accounts,” on page 9](#)
- ◆ [Section 1.2, “Migrating System Settings,” on page 10](#)
- ◆ [Section 1.3, “Migrating Application Settings,” on page 10](#)
- ◆ [Section 1.4, “Migrating Files and Folders,” on page 10](#)

1.1 Migrating User Accounts

ZENworks Personality Migration allows you to migrate the user profiles for the user who has logged on to the device, or for multiple users. You can select the local users or domain users whose personalities you want to migrate. You can also map the users to apply the personalities. You can apply these personalities to a single user or multiple users.

1.2 Migrating System Settings

You can migrate the following system settings:

- ♦ Accessibility
- ♦ Appearance
- ♦ Date and regional Settings
- ♦ Keyboard, mouse, and other hardware
- ♦ Network settings
- ♦ Sounds and multimedia

For a detailed list of the settings, see [Appendix D, “Supported Settings in Personality Migration,” on page 51](#).

IMPORTANT: You can migrate the network settings only in the File mode. For more information, see [Appendix B, “Troubleshooting Personality Migration,” on page 43](#)

1.3 Migrating Application Settings

You can migrate the application settings of products belonging to the following companies:

- ♦ Adobe
- ♦ America Online
- ♦ Corel
- ♦ GAIM
- ♦ IBM
- ♦ Macromedia
- ♦ Microsoft
- ♦ Mozilla
- ♦ OpenOffice.org
- ♦ Palm
- ♦ Qualcomm
- ♦ Research in Motion
- ♦ Sun

For a detailed list of the applications, versions, and settings, see [Appendix D, “Supported Settings in Personality Migration,” on page 51](#).

1.4 Migrating Files and Folders

You can select to migrate files, file types, or folders. You can also select the location on the destination device to store these files and folders.

Installing ZENworks Personality Migration

2

You can run Novell ZENworks Configuration Management Personality Migration on a Windows workstation. ZENworks Personality Migration allows you to migrate personality from a Windows device to another Windows device.

- [Section 2.1, “System Requirements,” on page 11](#)
- [Section 2.2, “Prerequisite,” on page 11](#)
- [Section 2.3, “Installing ZENworks Personality Migration on Windows,” on page 11](#)
- [Section 2.4, “Installing ZENworks Personality Migration by Using ZENworks Bundles,” on page 12](#)
- [Section 2.5, “Installing the ZENworks Personality Migration Core,” on page 12](#)
- [Section 2.6, “Installation Options,” on page 13](#)

2.1 System Requirements

ZENworks Personality Migration is supported on the following platforms in Microsoft Windows:

- Windows 2000 Professional SP4 (only the 32-bit operating system version)
- Windows Vista (both 32-bit and 64-bit operating system versions)
- Vista SP1 (both 32-bit and 64-bit operating system versions)
- Windows XP Professional SP2 (only the 32-bit operating system version)
- Windows XP Professional SP3 (only the 32-bit operating system version)
- Windows 7 (both 32-bit and 64-bit operating system versions on Professional, Ultimate, and Enterprise editions)

To successfully store a personality to a device, the device must have at least double the amount or greater free disk space than the size of the personality being stored.

For example, to successfully store a personality of 1 GB, the device on which you are storing the personality must have a free disk space of at least 2*1 GB or greater.

2.2 Prerequisite

Before installing ZENworks Personality Migration, you need to install the corresponding Microsoft Visual C++ 2008 redistributable package.

2.3 Installing ZENworks Personality Migration on Windows

- 1 In your Web browser, access the following URL:

http://zenworks_primary_server_id/zenworks-setup/?pageId=tools.

The *zenworks_primary_server_id* is the IP address of the ZENworks Primary Server from where you want to download the Personality Migration utility.

- 2 Download `ZENworksPersonalityMigration.exe` to a temporary location.
- 3 Run `ZENworksPersonalityMigration.exe` and follow the on-screen prompts to install it on your workstation.

2.4 Installing ZENworks Personality Migration by Using ZENworks Bundles

- 1 In your Web browser, access the following URL:

`http://zenworks_primary_server_id/zenworks-setup/?pageId=tools.`

The *zenworks_primary_server_id* is the IP address of your ZENworks Primary Server from where you want to download the Personality Migration utility.

- 2 Download `ZenworksPersonalityMigration.exe` to a temporary location.
- 3 Create a Windows bundle with an *Install File(s)* action by using the `zenworksPersonalityMigration.exe` file located on the ZENworks server. Specify a destination folder on the managed device to install this file.

For example, you can specify the destination folder as `C:\Install`.

- 4 Add a *Launch Executable* action in the install set of the bundle that you created. In the General tab, specify the path where the `ZENworksPersonalityMigration.exe` file is located on the managed device in the *Command* option.

For example, if the `ZENworksPersonalityMigration.exe` file is located in `C:\Install` on the managed device, then the path is `C:\Install\ZENworksPersonalityMigration.exe`.

- 5 In the *Command Line Parameters*, enter `/quiet` to install Personality Migration without user intervention.
- 6 Click the *Advanced* tab, then do the following:
 - 6a Set the *Wait before proceeding to next action* to *When action is complete*.
 - 6b Set the *Executable security level* to *Run as secure system user*.
- 7 Assign this bundle to the managed device.

2.5 Installing the ZENworks Personality Migration Core

You can migrate a personality either by using a graphical user interface or by using a command line. To use the command line option, you need the ZENworks Personality Migration Core. The graphical user interface option and the Core option are installed automatically when you install ZENworks Personality Migration, or you can choose to install only the Core option.

You can install the ZENworks Personality Migration Core separately by using the `zenworksPersonalityMigration.exe /coreonly` command. For more information, see [Section 2.6, “Installation Options,” on page 13](#).

2.6 Installation Options

The following table lists the options that can be used with the `ZenworksPersonalityMigration.exe` command:

Table 2-1 *Installation Options*

| Option | Description |
|-------------------------|---|
| <code>/?</code> | Displays help and the available options |
| <code>/passive</code> | Displays the progress of installation; does not require user intervention |
| <code>/quiet</code> | Installs Personality Migration silently without the graphical user interface |
| <code>/uninstall</code> | Uninstalls ZENworks Personality Migration |
| <code>/coreonly</code> | Install ZENworks Personality Migration without using the Graphical User Interface |
| <code>/repair</code> | Repairs the installed version of ZENworks Personality Migration |

IMPORTANT: The options listed are case sensitive.

Uninstalling Personality Migration

3

You can uninstall Personality Migration in any of the following ways:

- ♦ [Section 3.1, “Uninstalling Personality Migration by Using the ZENworksPersonalityMigration.exe file,” on page 15](#)
- ♦ [Section 3.2, “Uninstalling Personality Migration by Using the Command Line Utility,” on page 15](#)
- ♦ [Section 3.3, “Uninstalling Personality Migration by Using Windows Add or Remove Programs,” on page 15](#)

IMPORTANT: Before uninstalling Personality Migration, ensure that you close the Personality Migration application and the Personality Migration template builder.

3.1 Uninstalling Personality Migration by Using the ZENworksPersonalityMigration.exe file

- 1 Go to the location where the ZENworksPersonalityMigration.exe file is located and double-click the file.
- 2 On the Welcome to ZENworks Personality Migration Setup page, click *Next*.
- 3 Select *Remove*, then click *Next*.

3.2 Uninstalling Personality Migration by Using the Command Line Utility

- 1 At the Windows command prompt, go to the location where the ZENworksPersonalityMigration.exe file is located.
- 2 Run the ZENworksPersonalityMigration.exe /uninstall command.

or

To perform a silent uninstallation, run the following command:

```
ZENworksPersonalityMigration.exe /uninstall /quiet
```

3.3 Uninstalling Personality Migration by Using Windows Add or Remove Programs

- 1 On the desktop, click *Start > Settings > Control Panel > Add or Remove Programs*.
- 2 In the Add or Remove Programs window, select *ZENworks Personality Migration*, then click *Remove*.

Manually Migrating Personality Settings

4

ZENworks Personality Migration allows you to store a user's personality and migrate the personality from a Windows device to another Windows device.

To manually migrate the personality settings, perform the following tasks in the order listed:

- ♦ [Section 4.1, “Storing a User’s Personality Settings and Data,” on page 17](#)
- ♦ [Section 4.2, “Applying a User’s Personality Settings and Data,” on page 22](#)

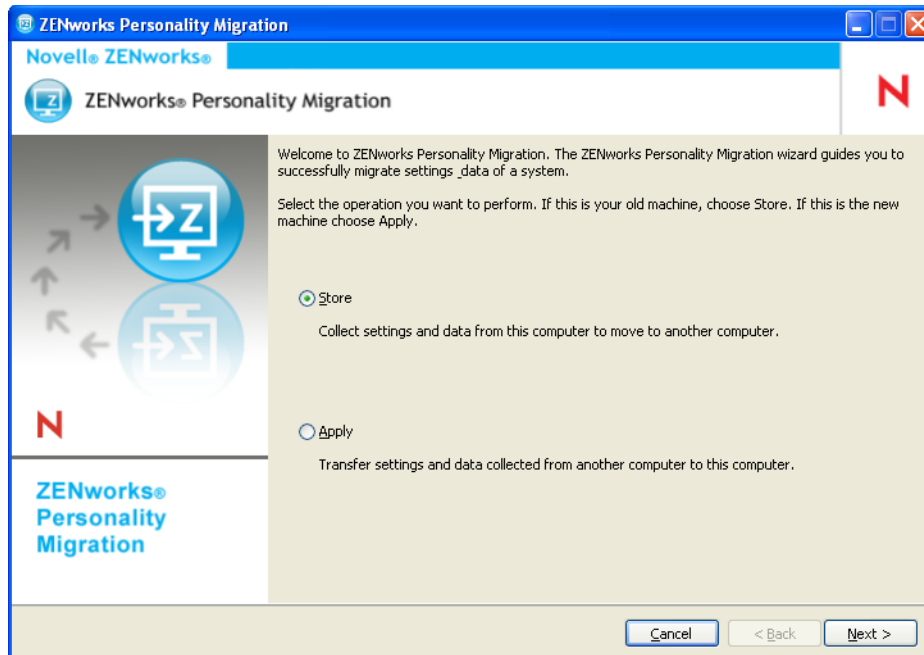
4.1 Storing a User’s Personality Settings and Data

1 Before beginning the migration process, do the following:

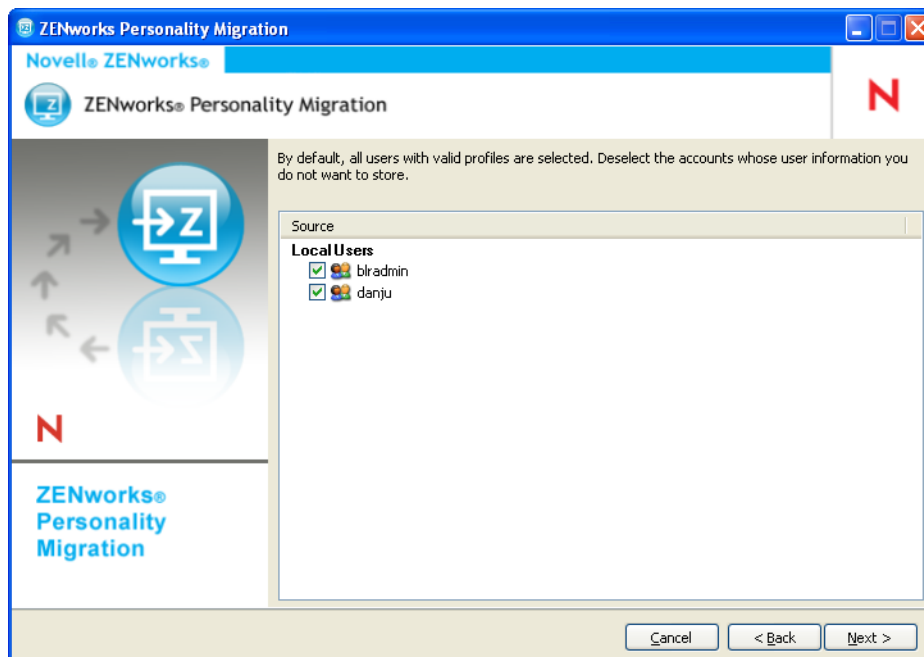
- ☐ Ensure that the ZENworks Personality Migration is installed on the source device. For more information, see [Section 2.3, “Installing ZENworks Personality Migration on Windows,” on page 11](#).
- ☐ Close the applications whose settings you want to migrate. (You are also prompted to close any open applications upon launching ZENworks Personality Migration).
- ☐ If you are migrating system settings and user settings across interconnected devices without using an intermediate file, you must make sure that the Windows Firewall has been enabled to treat the Personality Migration software as an exception, so applications can interact with each other. For more information, see [“Enabling ZENworks Personality Migration through the Windows Firewall” on page 21](#).
- ☐ If you want to migrate personality for multiple user accounts on the device, then log in as a user with administrator privileges.

2 Use one of the following methods to launch ZENworks Personality Migration:

- ♦ Double-click the ZENworks Personality Migration shortcut icon on the desktop.
- ♦ Click *Start > All Programs > Novell ZENworks > ZENworks Personality Migration*.

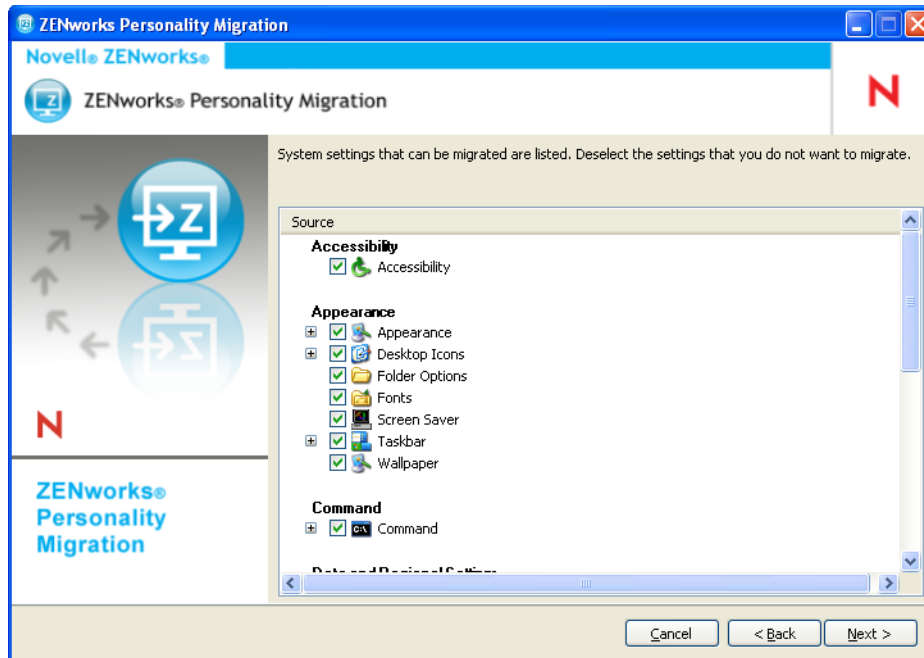


- 3 Click *Store* to store the user account information, system settings, application settings and data of the source system to a PNP (Platform Neutral Package) file.
- 4 Click *Next* to search the source system for the user information and the installed applications whose settings you can migrate. This can take several minutes.

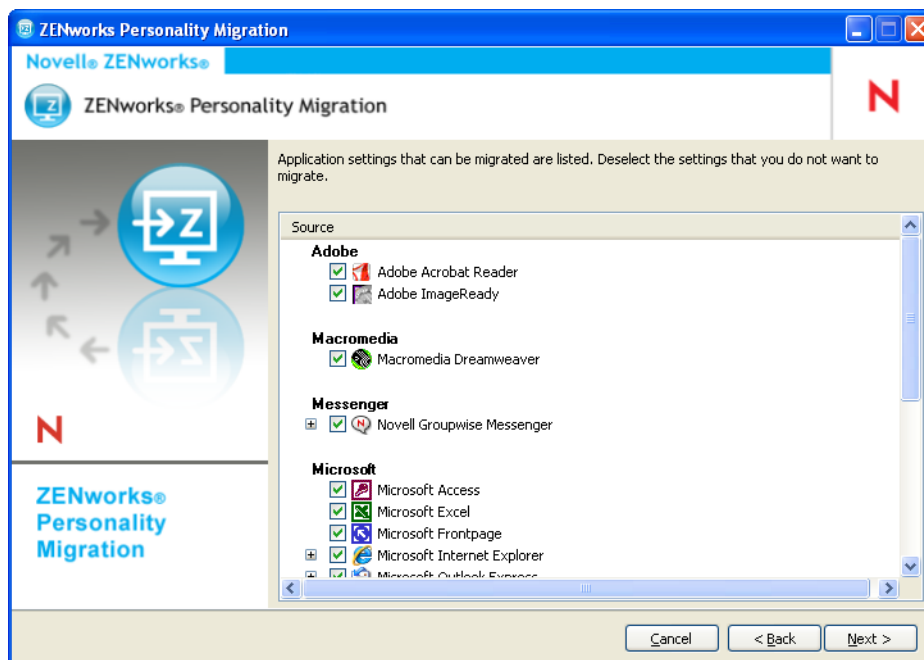


By default, all the user accounts listed are selected.

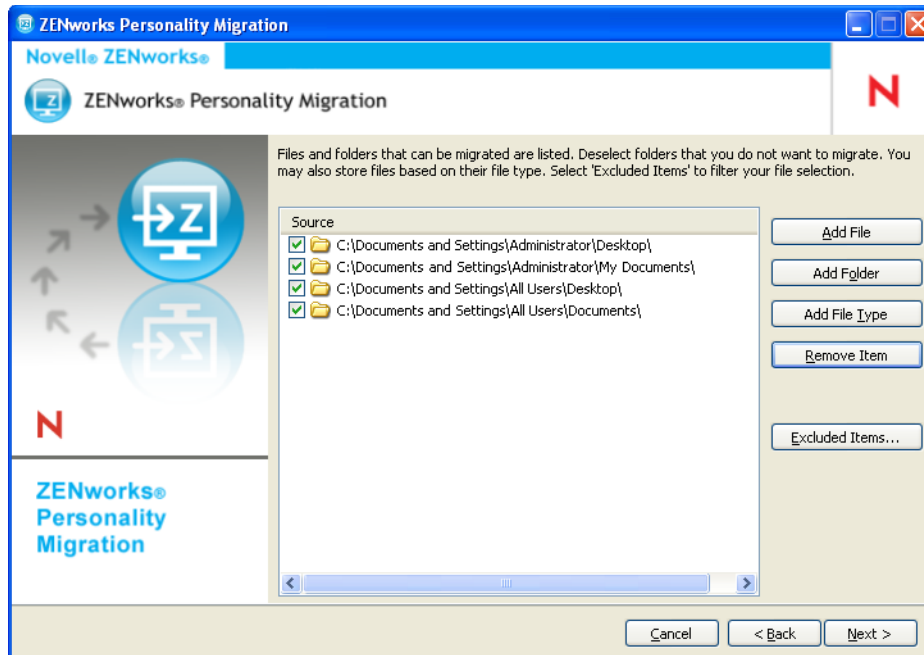
- 5 Deselect the user account whose settings you do not want to migrate
- 6 Click *Next* to deselect the system settings you do not want to migrate.



7 Click *Next* to deselect the application settings you do not want to migrate.



8 Click *Next* to deselect the files and folders you do not want to migrate.



This page also enables you to add files, folders or files of a particular type to the list of migration files.

- 9 (Optional) Click *Add File* to add a file to migrate. The added file is listed in the *Source* column.
- 10 (Optional) Click *Add Folder* to add a folder to migrate. The added folder is listed in the *Source* column.
- 11 (Optional) Click *Add File Type* to specify the types of files you want to migrate.
- 12 (Optional) Click *Remove Item* to remove the highlighted item from the list of items to be migrated.
- 13 (Optional) Click *Exclude Item* to exclude any files and folders you do not want to migrate.
- 14 Click *Next*, then select the mode to transfer the settings and data. You can transfer the data either by Direct mode or File mode.
 - ♦ **Direct:** Provides real-time migration of settings and data between systems in the same subnet.

IMPORTANT: Do not migrate network settings in the Direct mode. For more information, see [Appendix B, “Troubleshooting Personality Migration,” on page 43](#). Alternatively, you can migrate the network settings in the File mode.

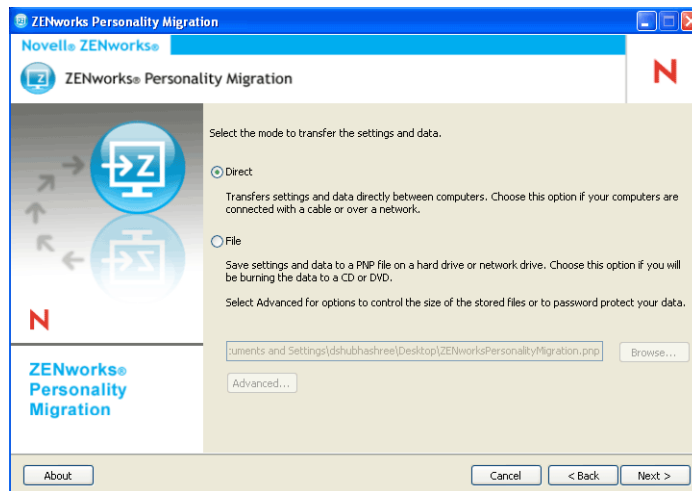
Continue with [Section 4.1.1, “Transferring Data by Using Direct Mode,” on page 21](#).

- ♦ **File:** Stores the migration settings and data in a PNP file. Specify the filename or click *Browse* to browse to and select the file to store the settings and data.

Continue with [Section 4.1.2, “Transferring Data by Using File Mode,” on page 22](#).

4.1.1 Transferring Data by Using Direct Mode

- 1 You must have performed Step 1 to Step 13 in [Section 4.1, “Storing a User’s Personality Settings and Data,”](#) on page 17.
- 2 Be sure that ZENworks Personality Migration is enabled through the Windows Firewall. If it is not enabled, see [“Enabling ZENworks Personality Migration through the Windows Firewall”](#) on page 21.
- 3 Select *Direct*, then click *Next*. The source system waits for the destination system to connect.



- 4 On the destination system where ZENworks Personality Migration is installed, select the source system whose settings and data you want to apply.
- 5 Click *Next* to apply the settings and data on the destination device.
Continue with [Step 6](#) in [Section 4.2, “Applying a User’s Personality Settings and Data,”](#) on page 22.

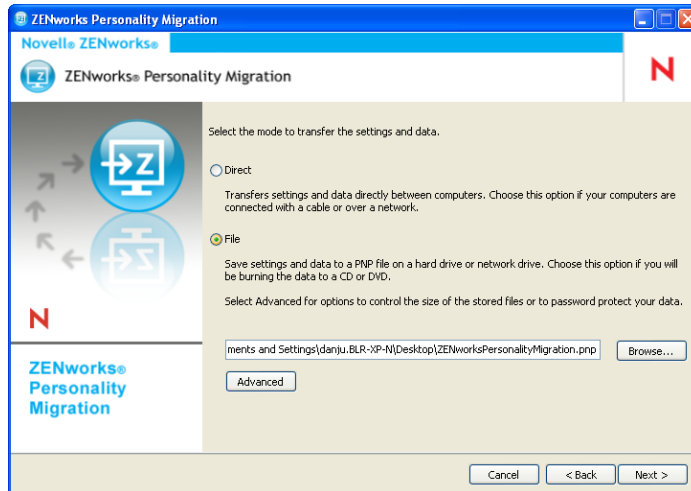
Enabling ZENworks Personality Migration through the Windows Firewall

If you are migrating personalities across devices on a network by using the Direct mode, you must enable the Windows Firewall to detect certain exceptions.

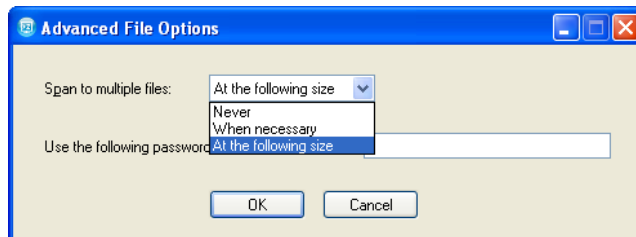
- 1 Click *Start > Settings > Control Panel*.
- 2 Double-click *Windows Firewall* to open the Windows Firewall dialog box.
- 3 Click the *Exceptions* tab.
- 4 In the *Programs and Services* list, check to see if ZENworks Personality Migration and ZENworks Personality Core exceptions are available and selected. If they are, proceed to [Step 7](#).
- 5 If the exceptions are not available in the *Programs and Services* list, then click *Add Program*.
- 6 Browse to the Personality Migration installation folder and select the `PersonalityMigration.exe` and `PersonalityMigrationCore.exe` files.
- 7 Click *OK*.

4.1.2 Transferring Data by Using File Mode

- 1 You must have performed Step 1 to Step 13 in [Section 4.1, “Storing a User’s Personality Settings and Data,”](#) on page 17.
- 2 Select *File*.



- 3 Click *Advanced* to display the Advanced File Options dialog box.



ZENworks Personality Migration can store the settings and data from your system in multiple files. By default, it creates 650 MB files. The maximum span size is 2 GB. The *Span to multiple files* option allows you to control the size of the Personality Migration output files.

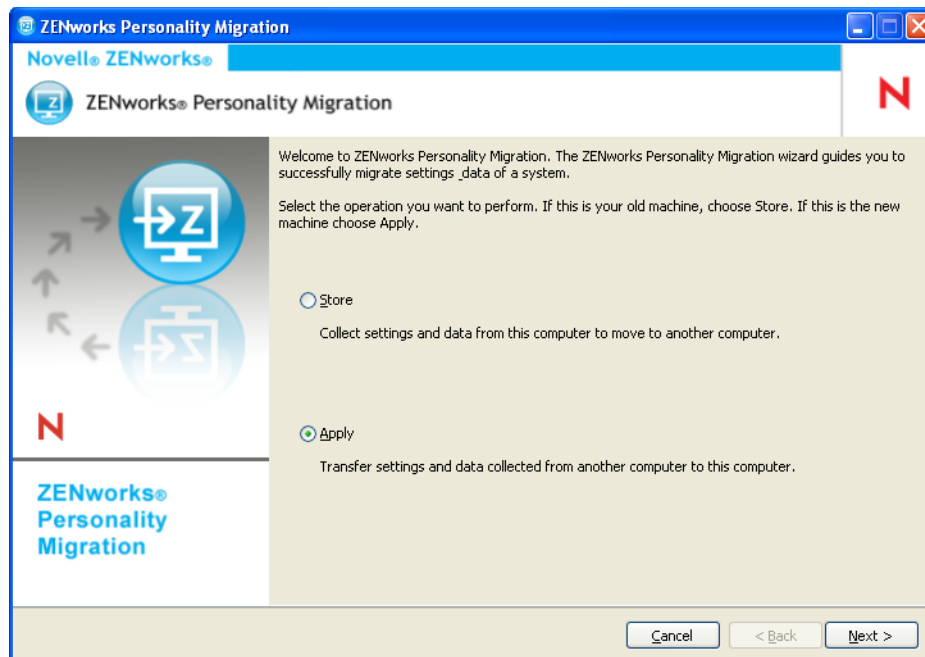
The *Password to encrypt the PNP file* option password protects the data files that Personality Migration generates. You are prompted for the password when you apply the settings on the destination machine.

- 4 Click *OK* to close the Advanced File Options dialog box.
- 5 Click *Next* to display the progress of the settings and files being stored.
- 6 Click *Next* to review the results. The errors are displayed in red color.
- 7 Click *Finish* to complete the store process.

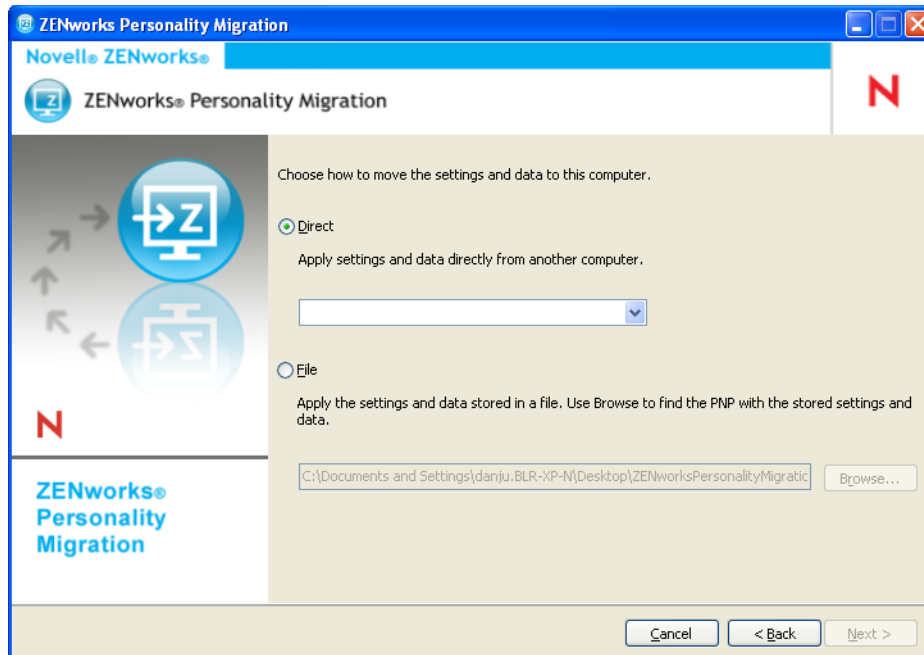
4.2 Applying a User’s Personality Settings and Data

- 1 Ensure that Personality Migration is installed on the destination device. For more information, see [Section 2.3, “Installing ZENworks Personality Migration on Windows,”](#) on page 11.

- 2 Use one of the following methods to launch ZENworks Personality Migration on the system as follows:
- ♦ Click the *ZENworks Personality Migration* shortcut icon on the desktop.
 - ♦ Click *Start > All Programs > Novell ZENworks > ZENworks Personality Migration*.



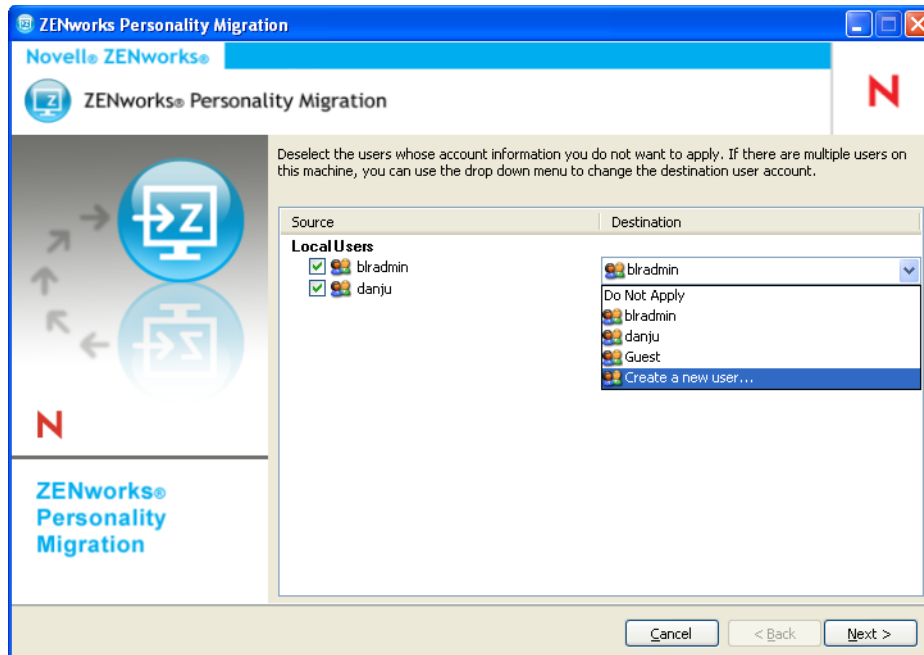
- 3 Click *Apply* to apply the saved settings and data on the device.
- 4 Click *Next*, then select the mode to transfer the user's personality settings and data:



- ♦ **Direct:** Provides real-time migration of settings and data between systems in the same subnet. The utility identifies and lists all the machines in the network that are ready to migrate their personalities. Continue with [Step 5](#).

NOTE: Direct Migration is supported only from 32 bit to 32 bit machines on the same subnet.

- ♦ **File:** Uses the migration settings and data stored in a PNP file. Click *Browse* to browse to and select the PNP file saved during the store operation. Skip to [Step 7](#).
- 5 Select the source system whose settings and data you want to apply.
 - 6 Click *Next*, then to select one of the following transfer options:
 - ♦ **Typical:** Lets you migrate all the selected settings and data of the user's profile from the source system to the destination system. If the user's account does not exist on the destination system, it is newly created with a blank password, if the administrator is logged in to the destination system. If the administrator is not logged in to the destination system, the selected settings are migrated to profile of the user who has logged in to the destination system.
Skip to [Step 13](#).
 - ♦ **Custom:** Lets you customize the personality settings and data before migrating to the destination system. You can choose to migrate the personality to different users or create new users on the destination system. Continue with [Step 7](#).
 - 7 Click *Next*.



The *Source* column lists the user account information that was stored in the PNP file.

The *Destination* column lists the user accounts available on the current device.

If the administrator is logged in to the destination device, and the source user does not exist on the destination device, the source user account is automatically created on the destination device with a blank password.

IMPORTANT: The source user account is not created on the destination device if the Password Complexity policy is enabled on the destination device.

If the administrator is not logged in to the destination device, the selected settings are migrated to the profile of the user who has logged in to the destination device.

You can also do any of the following in the *Destination* column:

- ♦ Select an existing user account to apply the personality settings to a different user.
For example, you can apply the personality settings of *bladmin* to the *Guest* user.
- ♦ Click *Create a new user* to create a new user account and apply the personalized settings to this newly created user. You are prompted to enter the username and the password for the new user.

NOTE: If the Password Complexity policy is enabled on the destination device, ensure to specify a password that matches the Password Complexity policy of the destination device.

- 8 Click *Next*. Deselect the system settings you do not want to migrate.
- 9 Click *Next*. Deselect the application settings you do not want to migrate.
- 10 (Optional) Double-click the application name in the *Destination* column and select a different application if you want to apply the personality settings across applications. For example, you can apply the Firefox bookmarks and settings to Internet Explorer or vice versa.
- 11 Click *Next*. Deselect the files settings you do not want to migrate.

- 12** (Optional) Double-click the filename in the Destination column to change the destination of the file.
- 13** Click *Next* to migrate the selected settings to the destination device. This step might take some time, depending on the amount of data migrated.
- 14** Review the results of the migration. Errors, if any, appear in red color.

Automatically Migrating Personality Settings

5

ZENworks Personality Migration provides automated migration for large-scale personality migrations from a Windows managed device to another Windows managed device across an enterprise.

To automatically migrate the personality settings, perform the following tasks in the order listed:

- ♦ [Section 5.1, “Creating a Personality Template,” on page 27](#)
- ♦ [Section 5.2, “Modifying an Existing Template,” on page 38](#)
- ♦ [Section 5.3, “Automatically Migrating Personality Settings,” on page 38](#)
- ♦ [Section 5.4, “Migrating Personality Settings by Using the Command Prompt,” on page 39](#)
- ♦ [Section 5.5, “Command Prompt Options to Store and Apply Personalities,” on page 40](#)

5.1 Creating a Personality Template

Personality Migration uses a template to perform automated migrations by using the directive bundles. This provides an efficient migration method without stepping through the ZENworks Personality Migration user interface each time you want to perform a migration on a specific machine. Ensure that you use the same template for the store and apply process.

A template defines policies that describe to the ZENworks Personality Migration engine the migration rules for the following settings categories:

- ♦ Users
- ♦ System Settings
- ♦ Application Settings
- ♦ Files and Folders

The template communicates which items are to be saved from the source Windows machine into the PNP file, and which items are to be applied to the destination machine.

A template is an XML file that can be read and edited with any editor. However, using the Template Builder for ZENworks Personality Migration is a convenient way to build custom templates for migrations, so you can have standardized and consistent migration across an organization. You can create templates using the Template Builder.

5.1.1 Starting the Template Builder

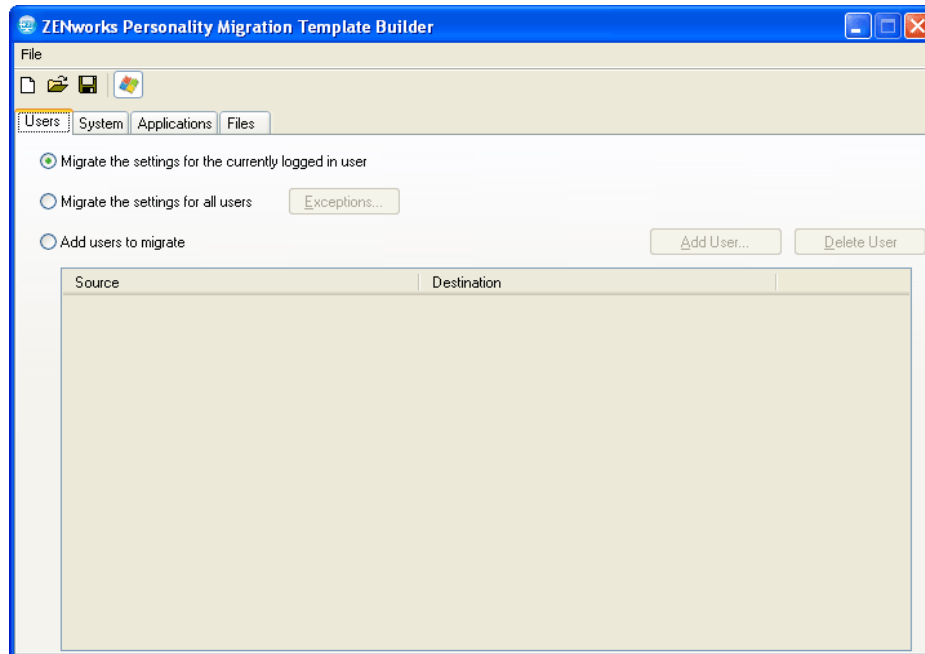
- 1 On a supported Windows device, click *Start > All Programs > Novell ZENworks > ZENworks Personality Migration Template Builder*.

5.1.2 Using the Template Builder to Create a Template

The Template Builder consists of four tabs in addition to standard *File* options such as *New*, *Open*, and *Save*.

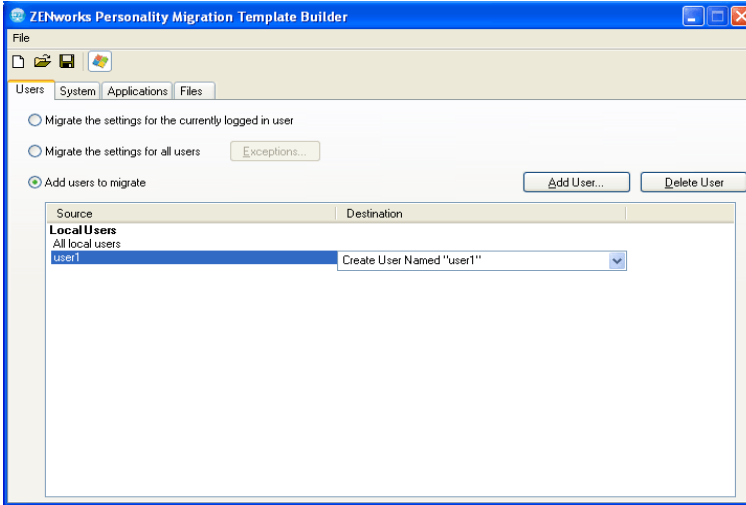
- 1 Open the Template Builder to display the default *Users* tab.

The *Users* tab options control template information for the user migration.

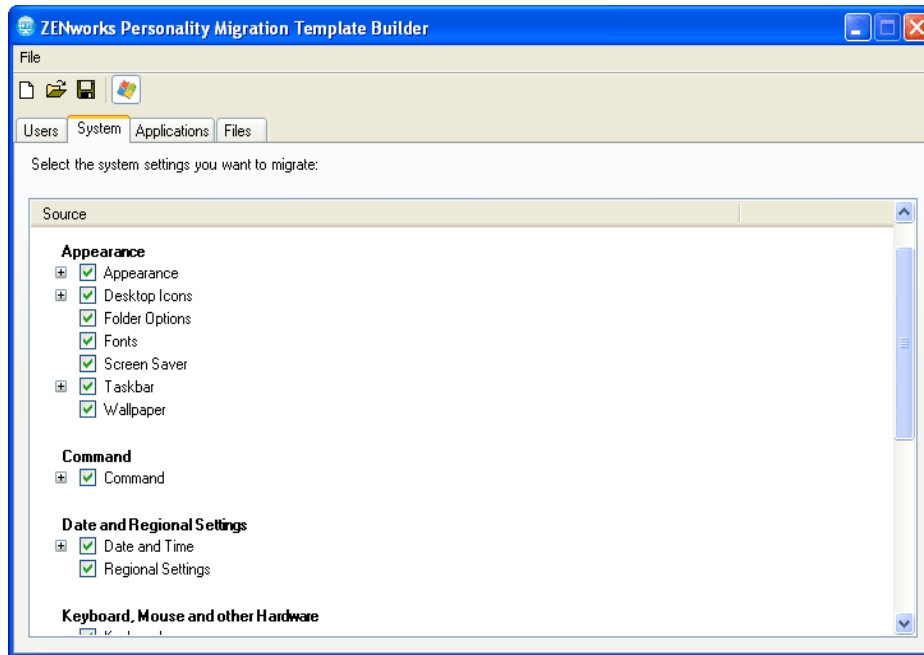


- 2 Select one of the options described in the following table, depending on whether you want to migrate one user, all users, or a selected list of users.

| Option | Description |
|--|---|
| <i>Migrate the settings for the currently logged in user</i> | Migrates the settings for the currently logged in user to another logged in user. |
| <i>Migrate the settings for all users</i> | Migrates all the settings selected in the template for all the user profiles in the system. Click <i>Exceptions</i> to list users you want to exclude from migration. Add User: Lets you select all the local users, the domain users, or a specific user to be excluded from migration. For example, if you do not want to migrate the administrator settings from any of the systems targeted for migration, click <i>Add User</i> , select <i>The following user</i> option, specify <i>administrator</i> , then click <i>OK</i> . Delete User: Lets you remove the user from the list of users excluded from migration. |

| Option | Description |
|-----------------------------|---|
| <i>Add users to migrate</i> | <p>This option allows you to explicitly list the profiles to migrate.</p> <p>Add User: Lets you select all the local users, the domain users, or a specific user to be migrated.</p> <p>You can also map a username on the source machine to a different username on the destination machine:</p> <ol style="list-style-type: none"> 1. Click <i>Add User</i>. 2. Click <i>The following user</i> option and specify the username. Ensure that the username is a valid account on the host machine, such as user1. 3. Click <i>OK</i> to display the username in the <i>Source</i> column.  <ol style="list-style-type: none"> 4. From the drop-down list, click the destination of the newly added user displayed as <i>Create User Named "username" by default</i>. For example, <i>Create User Named "user1"</i>. The user's account is created with a blank password on the destination device. <p>IMPORTANT: The source user account is not created on the destination device if the Password Complexity policy is enabled on the destination device.</p> <p>or</p> <p>Select the <i>Create New User</i> option, and specify the username and the password to be created on the destination machine to which you want to migrate the personality settings. If the Password Complexity policy is enabled on the destination device, the password that you specify should match the password complexity of the destination device.</p> <ol style="list-style-type: none"> 5. Click <i>OK</i>. <p>Delete User: Lets you remove the user from the list of users to be migrated.</p> |

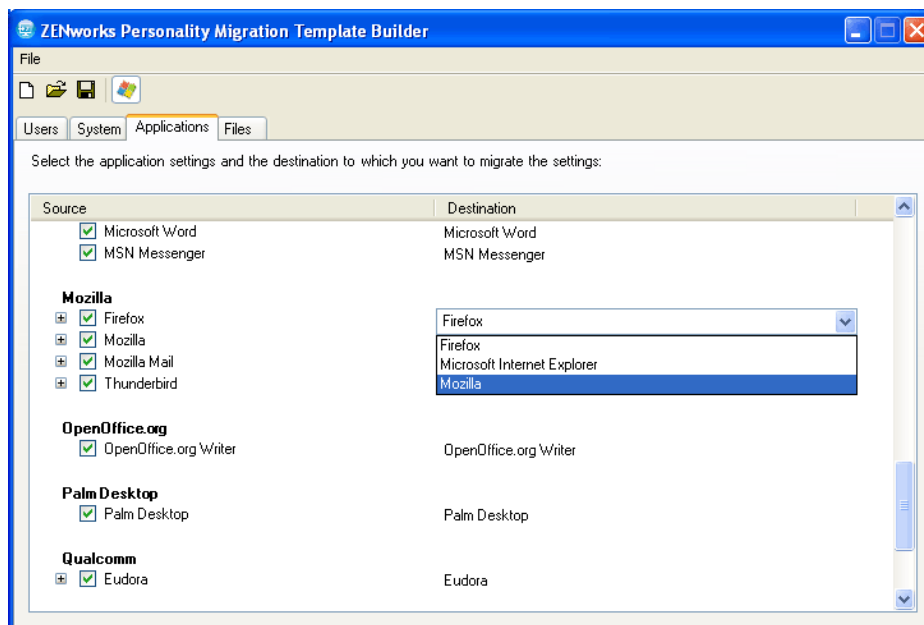
- 3 Click the *System* tab, then deselect any settings you do not want to migrate.



The *System* tab controls the system settings to be migrated for each of the user accounts selected in the *Users* tab. By default, all the settings are selected.

To deselect all the options, right-click the *Source* panel and select the *Uncheck All* option. To select all the options in the *Source* panel, right-click and select the *Check All* option.

- 4 Click the *Applications* tab to display the list of all the applications you can migrate.



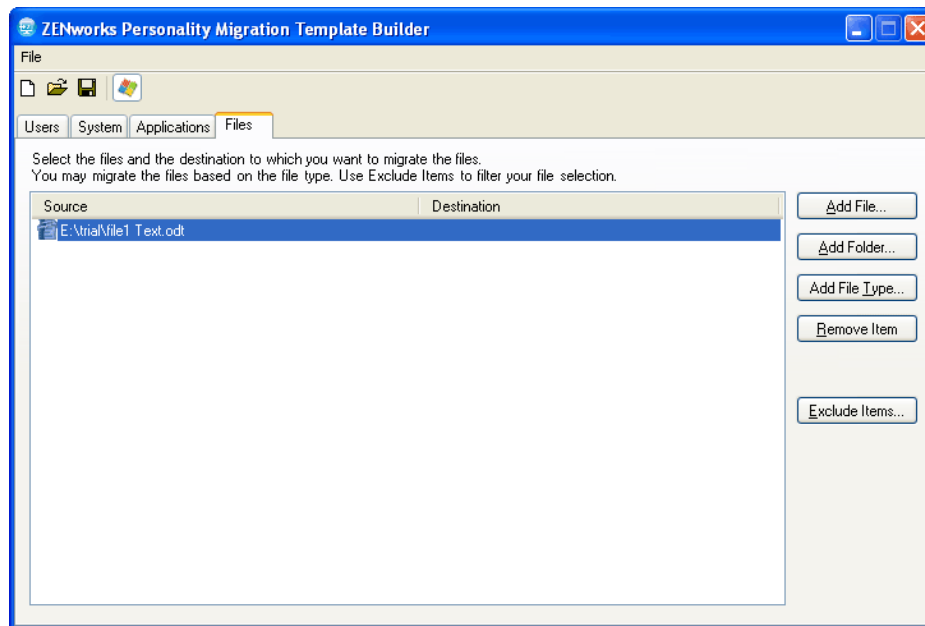
To deselect all the options, right-click the *Source* panel and select the *Uncheck All* option. To select all the options, right-click the *Source* panel and select the *Check All* option.

5 Select an appropriate destination application from the drop-down list in the *Destination* column. ZENworks Personality Migration supports the migration of the application settings between:

- ♦ **Same applications of same version:** Migrates settings between applications of the same version, such as from Microsoft Office 2003 to Microsoft Office 2003.
- ♦ **Same applications of different versions:** Migrates settings from the source application to a destination application of higher version, such as from Microsoft Office 2003 to Microsoft Office 2007.
- ♦ **Cross Applications:** Migrates settings from the source application to a destination application of similar type, such as from Internet Explorer to Firefox.

Before migration, ensure that the destination application is installed on the destination machine. An application setting selected for migration is ignored if it is not available on the source machine or the destination machine.

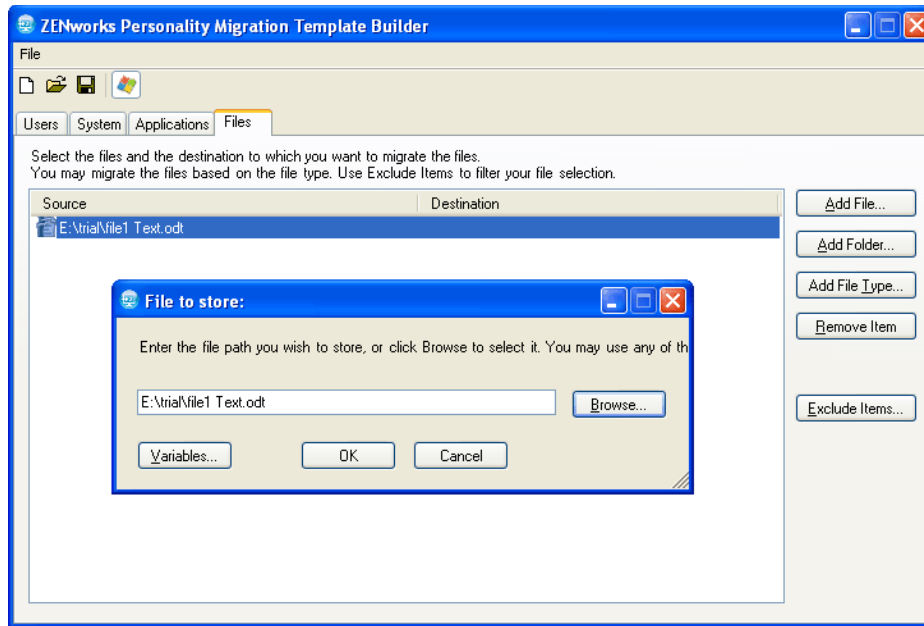
6 Click the *Files* tab to display settings for migrating data.



The *Files* tab allows you to set the rules for the migration of data.

IMPORTANT: Do not select to migrate the entire temp folder to the destination. Select only those files that you want to migrate. This is because the migration process utilizes the temp folder, and selecting the entire folder for migration displays error messages.

7 Click *Add File* to add a file to migrate.



7a Click *Browse* to browse to and select the file you want to add for migration.

or

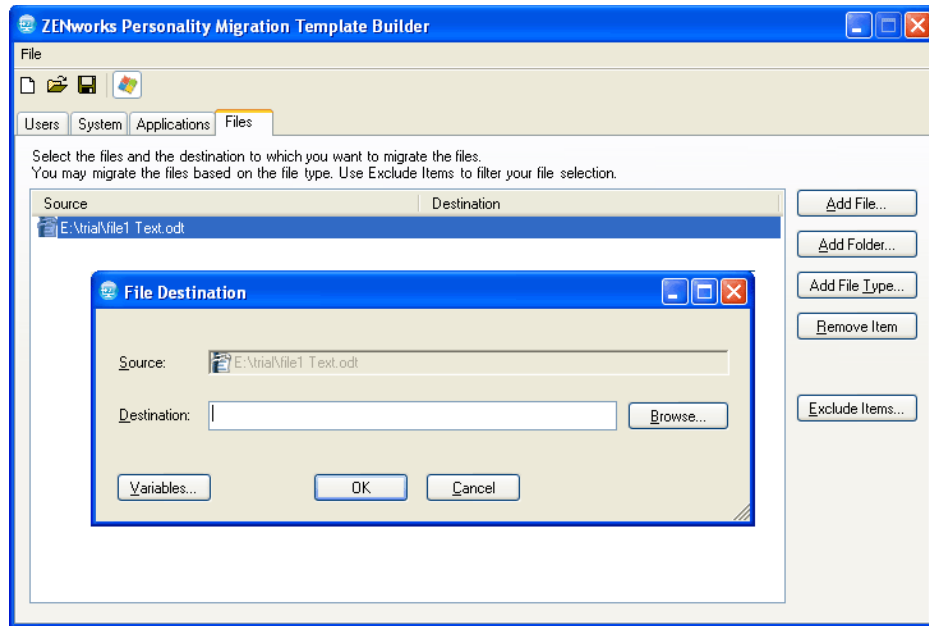
Click *Variables* to select a variable that maps to the location of the file you want to migrate. For example, if you want to migrate a desktop file named `test.txt`, click the *desktop* variable and append `\test.txt` to it.

If the variable is a directory, the path should end with a `\` (backslash). For example, if you want to migrate the *desktop* directory, the variable is `%desktop%\`.

For more information on variables, see [Appendix E, “Understanding Variables,” on page 61](#).

7b Click *OK* to list the file in the *Source* column.

7c Double-click the filename in the *Source* column to open the File Destination dialog box.



7d Click *Browse* to browse to and select the destination location for the file migration
or

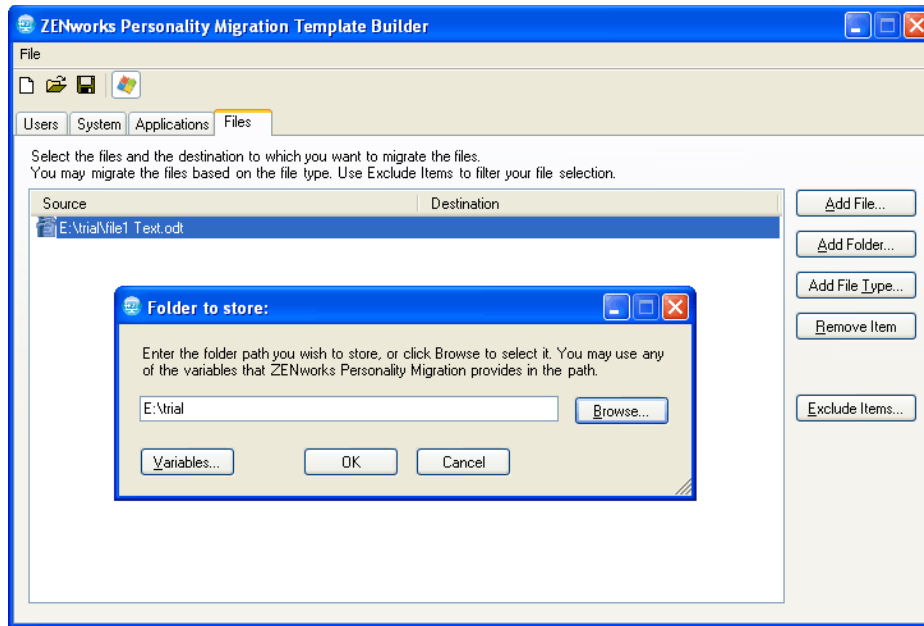
Click *Variables* to select a variable that maps to the destination location. For example, if you want to migrate the file named file1 to the favorites directory, click the *favorites* variable and append \file1 to it.

If the variable is a directory, the path should end with a \ (backslash). For example, if you want to migrate the desktop directory, the variable is %desktop%\.

For more information on variables, see [Appendix E, “Understanding Variables,” on page 61](#).

7e Click *OK*.

8 Click *Add Folder* to add a folder to migrate.



8a Click *Browse* to browse to and select the folder you want to add for migration.

or

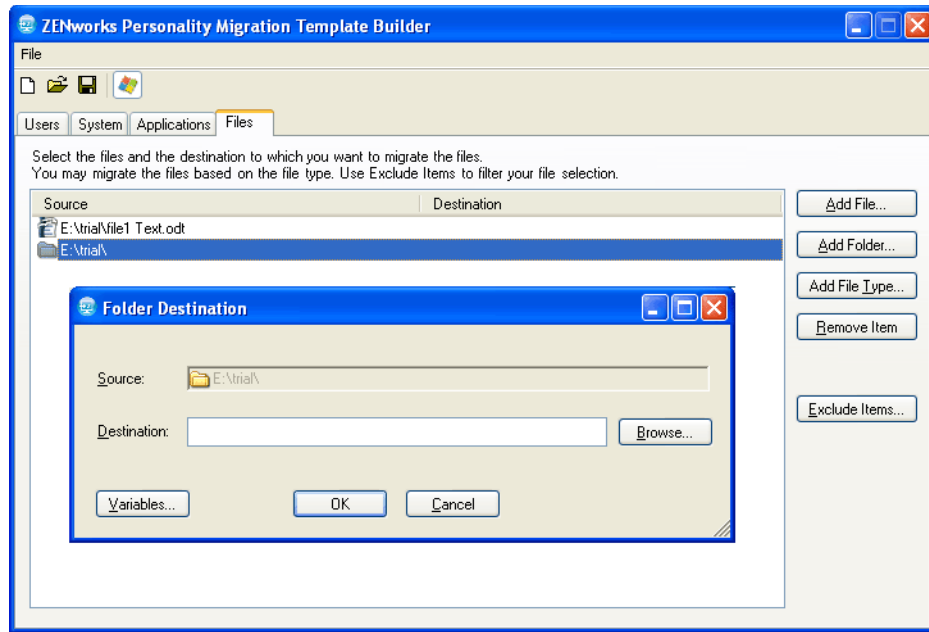
Click *Variables* to select a variable that maps to the location of the folder you want to migrate. For example, if you want to migrate a desktop folder `testfolder1`, click the `%desktop%` variable and append `\testfolder1` to it.

If the variable is a directory, the path should end with a `\` (backslash). For example, if you want to migrate the desktop directory, the variable is `%desktop%\`.

For more information on variables, see [Appendix E, “Understanding Variables,” on page 61](#).

8b Click *OK* to list the folder in the *Source* column.

8c Double-click the folder name in the *Source* column to open the Folder Destination dialog box.



8d Click *Browse* to browse to and select the destination location to migrate the folder.

or

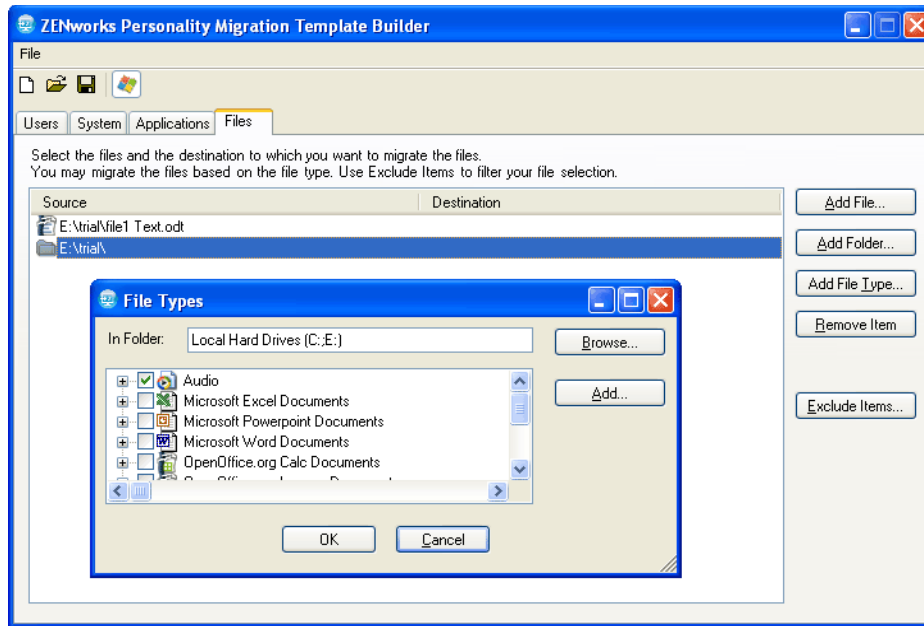
Click *Variables* to select a variable that maps to the destination location. For example, if you want to migrate the folder named `folder1` to the `programfiles` directory, then click the `programfiles` variable and append the `\folder1` name to it.

If the variable is a directory, the path should end with a `\` (backslash). For example, if you want to migrate the `desktop` directory, the variable is `%desktop%\`.

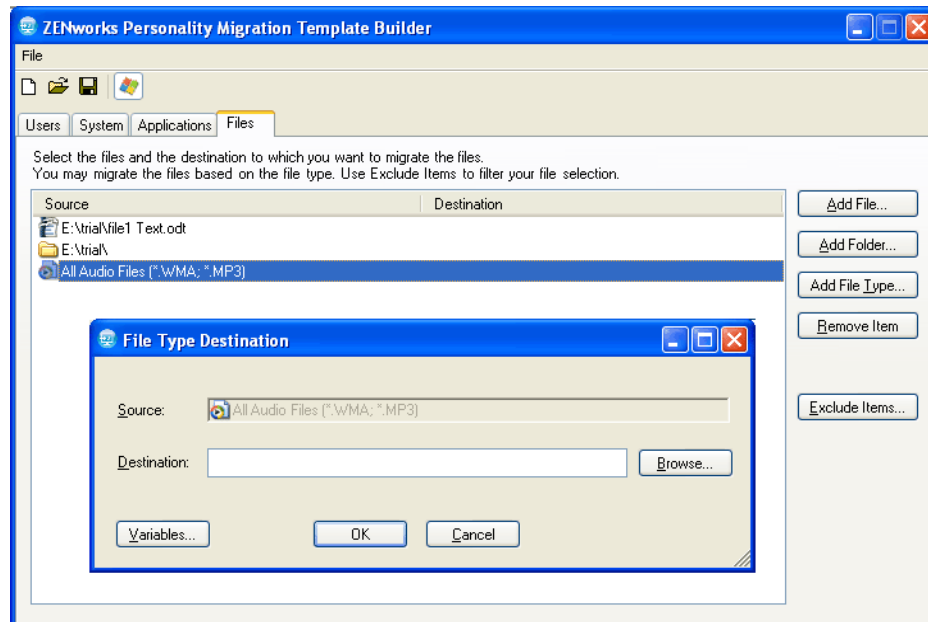
For more information on variables, see [Appendix E, “Understanding Variables,”](#) on [page 61](#).

8e Click *OK*.

9 Click *Add File Type* to add the types of files you want to migrate.



- 9a** In the *In Folder* field, type the name or click *Browse* to browse to and select the folder. By default, all the local hard drives are displayed in this field.
- 9b** (Optional) If you need to add a file type, click *Add*, then specify the file type, such as .INI.
- 9c** Select the file types you want to migrate, then click *OK* to list the file types in the *Source* column.
- 9d** Double-click the file type in the *Source* column to open the File Type Destination dialog box.



- 9e** Click *Browse* to browse to and select the destination location for the files.

or

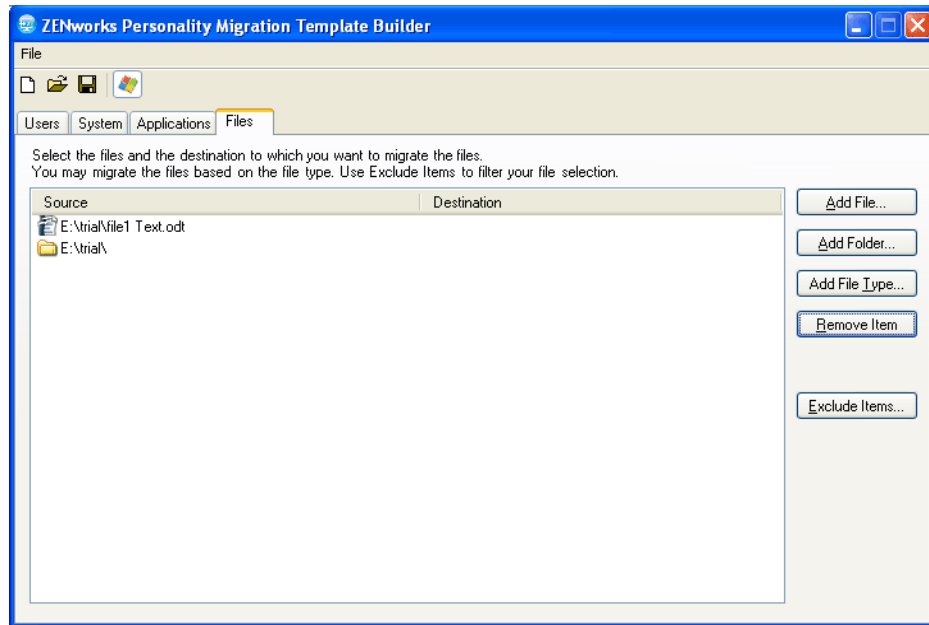
Click *Variables* to select a variable that maps to the destination location.

For more information on variables, see [Appendix E, “Understanding Variables,”](#) on page 61.

9f Click *OK*.

10 (Optional) Remove any files or folders that you do not want to migrate.

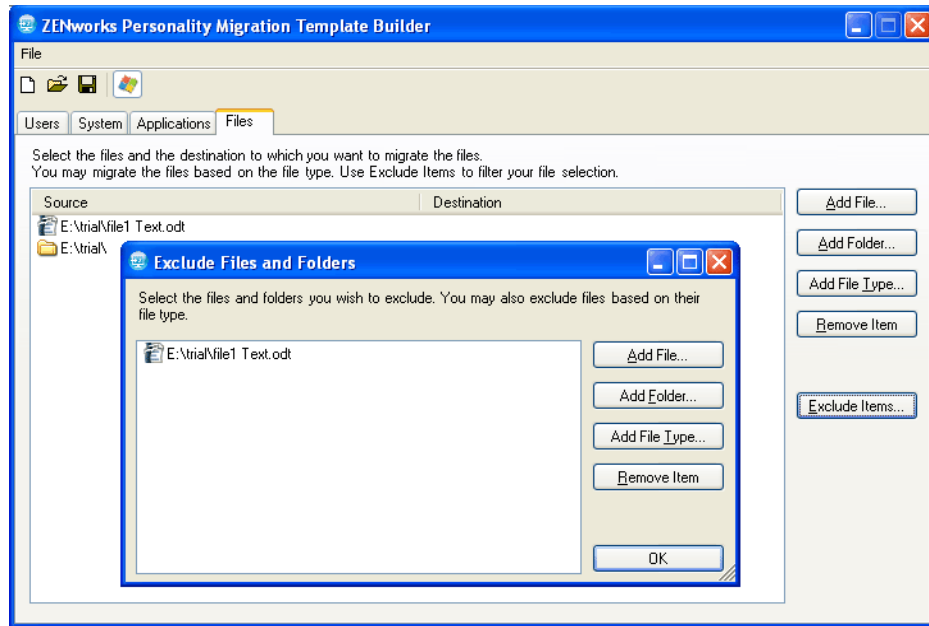
10a In the *Source* column, highlight the item that you do not want to migrate.



10b Click *Remove Item*.

11 (Optional) Exclude any files and folders you do not want to migrate.

11a Click *Exclude Items* to display the Exclude Files and Folders dialog box.



11b Select the options you want to use to exclude items:

- ◆ **Add Files:** Click *Add File*, then select the files to be excluded from the migration.
- ◆ **Add Folder:** Click *Add Folder*, then select the folders to be excluded from the migration.
- ◆ **Add File Type:** Click *Add File Type*, then select the types of files to be excluded from the migration.
- ◆ **Remove Item:** Click *Remove Item* to remove the item from the exclusion list and include it in the migration.

11c Click *OK*.

12 Click *File > Save* to save the template as an .xml file.

5.2 Modifying an Existing Template

The ZENworks Personality Migration Template Builder also allows you to modify existing templates.

- 1 Click *File > Open*, then open the template you want to modify.
- 2 Make the required changes.
- 3 Save the template.

5.3 Automatically Migrating Personality Settings

Use directive bundles for enterprise-scale migrations of personality settings from a Windows device to another Windows device.

When you create bundles by using the Store Personality or Apply Personality actions, the bundles always run as a dynamic administrator. For more information, see “[Action - Launch Executable](#)” in the [ZENworks 11 SP1 Software Distribution Reference](#).

NOTE: You must not launch multiple personality migration bundles at the same time on the same device. If you do so, the bundles are not launched correctly. The log of the bundle that was first launched is the only log stored in the `personalitylog.xml` file. Also, the dynamic administrator user profiles for the bundles are not deleted. You must manually delete them.

- 1 Create a Store Personality action.

For more information, see “[Creating Bundles](#)” in the *ZENworks 11 SPI Software Distribution Reference*.

- 2 Assign this bundle to a user or a device, whose user’s personality needs to be migrated.

For more information on assigning the bundle, see “[Assigning Existing Bundles to Users](#)” in the *ZENworks 11 SPI Software Distribution Reference*.

- 3 Create an Apply Personality action.

For more information, see “[Creating Bundles](#)” in the *ZENworks 11 SPI Software Distribution Reference*.

- 4 Assign this bundle to the user to whom you want to apply the personality.

For more information on assigning the bundle, see “[Assigning Existing Bundles to Users](#)” in the *ZENworks 11 SPI Software Distribution Reference*.

The personality settings are applied to the user on the destination system when the Apply Personality action is launched.

IMPORTANT: After applying the personalities, reboot the devices for the personalities to take effect. In order to ensure this, add the Reboot/Shutdown action to the bundle. For more information, see “[Creating Bundles](#)” in the *ZENworks 11 SPI Software Distribution Reference*.

5.4 Migrating Personality Settings by Using the Command Prompt

- 1 Run the migration program as an administrator:

Method 1:

1. Open a command prompt in Windows by clicking *Start > All Programs > Accessories*. Right-click *Command Prompt*, then click *Run as Administrator*.
2. Change to the ZENworks Personality Migration installation directory.

Method 2:

1. In the directory where you have installed Personality Migration, right-click the `PersonalityMigrationCore.exe` file.
2. Click *Properties > Compatibility*.
3. In the Privilege Level group, select *Run the program as an administrator*, then click *OK*.
4. Open a command prompt in Windows by clicking *Start > All Programs > Accessories > Command Prompt*.
5. Change to the ZENworks Personality Migration installation directory.

- 2 On the source device, store the personality by using the following command:

```
PersonalityMigrationCore.exe --store --template=value --file=value
```

You can also use the password, span-size, no-span, and log options. However, these are optional.

For example,

```
PersonalityMigrationCore.exe --store --template=C:\template.xml --  
file=C:\users.pnp --log=C:\users.log
```

For more information on options, see [Section 5.5, “Command Prompt Options to Store and Apply Personalities,” on page 40](#).

3 On the destination device, apply the personality by using the following command:

```
PersonalityMigrationCore.exe --apply --template=value --file=value
```

You can also use the password and log options. However, these are optional.

For example,

```
PersonalityMigrationcore.exe --apply --template=C:\template.xml --  
file=C:\users.pnp --log=C:\users.log
```

For more information on options, see [Section 5.5, “Command Prompt Options to Store and Apply Personalities,” on page 40](#).

5.5 Command Prompt Options to Store and Apply Personalities

Table 5-1 *Command Prompt Options*

| Option | Description/Value |
|--------------|--|
| file | The complete path and the name of the PNP file |
| template | The complete path and the name of the template |
| span-size | The size of spanned files in megabytes (MB) The default span-size is 650 MB and the maximum span-size is 2 GB |
| no-span | Migrates personalities without span |
| password | The password to access the PNP file |
| with-options | The filename in which the command line parameters are stored when a command exceeds 256 characters |
| log | The complete path and name of the log file |

Best Practices

A

The following sections explain the best practices to follow while using the Personality Migration utility:

- ♦ [Section A.1, “Storing and Applying Personalities,” on page 41](#)
- ♦ [Section A.2, “Setting the Length of the Computer Name,” on page 41](#)

A.1 Storing and Applying Personalities

After changing any system settings, ensure that you restart your device before storing the personality. Similarly, ensure that you restart your device before and after applying the personality. This is because certain system settings are applied only after restarting the device.

A.2 Setting the Length of the Computer Name

The name of the computer on which you are storing the personality must be less than or equal to 15 characters. This is because the maximum number of characters that you can specify for a computer name is set to 15 in NetBIOS.

Troubleshooting Personality Migration

B

This section provides solutions to problems you might encounter while working with Personality Migration:

- ♦ “The network connection is lost while using Direct mode to migrate network settings from the source device to the destination device when both the devices are in the same subnet” on page 43
- ♦ “How do I enable debug logging for settings migration in Personality Migration?” on page 43
- ♦ “Where do I find the Personality Migration log files?” on page 43
- ♦ “The Personality Migration application hangs” on page 44
- ♦ “Migration of the archive.pst file from a customized location in Microsoft Outlook fails” on page 44

The network connection is lost while using Direct mode to migrate network settings from the source device to the destination device when both the devices are in the same subnet

Source: ZENworks Configuration Management; Personality Migration.

Explanation: Do not migrate the network settings from the source machine to the destination machine in Direct mode. This is because the destination machine obtains the same network settings as the source machine, so it disconnects from the source and stops the migration process.

Action: Use File mode to migrate network settings.

Action: If you are required to use Direct mode to perform the migration, deselect the *Network Settings* option.

How do I enable debug logging for settings migration in Personality Migration?

Source: ZENworks Configuration Management; Personality Migration.

Action: In the `ZENworksPersonalityMigration_Installation_Path\App.config` file, set the value of the `Enable_Debug` parameter to `True`. The default value is `False`.

Where do I find the Personality Migration log files?

Source: ZENworks Configuration Management; Personality Migration.

Action: If Personality Migration is executed as a standalone application, you can find the `PersonalityMigration*.xml` log file in the following location:

```
%appdata%\Novell\PersonalityMigration\PersonalityMigration\11.0.0.x
```

If Personality Migration is executed by using the Store/Apply Action through ZENworks Configuration Management, you can find the PersonalityLog.xml file in the `ZENworks_Configuration_Management_Installation_Path\Novell\Zenworks\Logs\PersonalityMigration` directory on your device.

The Personality Migration application hangs

Source: ZENworks Configuration Management; Personality Migration.

Explanation: If you try to uninstall Personality Migration when the application is still open, the application hangs. A dialog box appears that allows you to either *Exit*, *Cancel*, *Ignore*, or *Retry* the uninstallation process.

Possible Cause: You clicked *Ignore*.

Action: Before uninstalling Personality Migration, ensure that the Personality Migration application is closed.

For more information on how to uninstall Personality Migration, see [Chapter 3, “Uninstalling Personality Migration,” on page 15](#).

Migration of the archive.pst file from a customized location in Microsoft Outlook fails

Source: ZENworks Configuration Management; Personality Migration.

Possible Cause: You stored or applied the Microsoft Outlook settings from a non-administrator's account.

Action: Store and apply the Microsoft Outlook settings from an administrator's account.

Migration Settings

C

If you have installed Personality Migration as a standalone application, the following settings can be migrated only by an administrator:

Table C-1 *Settings for Administrators to Migrate*

| Type | Settings |
|--|--|
| System Settings | Fonts |
| | FontInstall |
| | FontDPI |
| | SystemFonts |
| | Mouse pointer |
| | DefaultConnectionName (Internet Explorer, Connections) |
| | ResetTimeServer |
| | ResetFileServer |
| | SoundFilesLocation (Sound files for default settings) |
| | TimeZone |
| | AutoAdjustForDSTIsSet |
| | AutoAdjustForDST |
| | SyncSettings (Auto time sync) |
| | NTPSync |
| | NTPServerAddress |
| | DefaultNTPServer |
| | UseSimpleFileSharing |
| | Trash (Recycle Bin option) |
| Microsoft Outlook Settings | Archive.pst file |
| Microsoft Windows Login Screen Settings | EnableFastSwitching |
| | WelcomeScreen |
| | LoginBackgroundColor |
| | WelcomeScreenPictures |
| | PasswordHints |
| Microsoft Publisher Application Settings | ResearchParentalControlPassword |
| | DisableNonFilteredResearchSites |
| Network Settings | NetworkCards |
| | DNS |
| | IPFilterSecurity |
| | HostsFile |
| | LMHostsFile |

| Type | Settings |
|-------------------------------|--|
| Power and Energy Settings | EnableHibernate GlobalPowerPolicy |
| Files and Registries Settings | System files All user documents All mounted and unmounted registries |

C.1 Migrating E-mail Accounts and Profiles

C.1.1 Migrating Profiles

To migrate the Exchange Server User/Profile from source Microsoft Outlook to destination Microsoft Outlook 2007, perform the following steps:

- 1 Create a profile in Microsoft Outlook.
- 2 Log into Microsoft Outlook using the profile account created in Step 1.
- 3 Change the settings that you want to migrate.
- 4 Start the migration.

User/Profile is migrated from source Microsoft Outlook to destination Microsoft Outlook 2007 along with the selected settings.

NOTE:

- ♦ To migrate multiple Users/Profiles, see [Appendix F, “Cross-User Migration Scenarios,” on page 65](#).
 - ♦ Edit the hosts file under C:\Windows\System32\Drivers\etc path on both the source and destination devices by giving the IP address and FQDN.
-

C.1.2 Migrating Advanced E-mail Options

To migrate the available Advanced E-mail options, perform the following steps:

- 1 In Microsoft Outlook, click *Tools > Options > Preferences > E-mail Options > Advanced Email Options*.
- 2 Select the settings that you want to migrate.
- 3 Change the settings that you want to migrate.
- 4 Start the migration.

All the selected settings are migrated from source Microsoft Outlook to destination Microsoft Outlook 2007.

C.2 Personalizing Outlook

C.2.1 Nick Name Cache

To migrate the Nick Name Cache for Exchange Server User/Profile, perform the following steps:

- 1 Create a profile in Microsoft Outlook.
- 2 Log into the Microsoft Outlook using the Profile account.
- 3 Send e-mails to various e-mail addresses, so that the name gets stored in cache.
- 4 Start the migration.

In the destination Microsoft Outlook, log in with the same user/profile account. As you type the e-mail address, the relevant e-mail addresses from the cache are auto-populated.

C.2.2 Reading Pane

To migrate the available Reading Pane options, perform the following steps:

- 1 In Microsoft Outlook, click *Tools>Options>Others>Reading Pane*.
- 2 Select the settings that the you want to migrate.
- 3 Change the settings that you want to migrate.
- 4 Start the migration.

To change the Reading Pane Location settings:

- 1 Click *View>Reading Pane*.
or
Click *View>Arrange By>Custom>Other Settings*.
- 2 Select the settings that you want to migrate.
- 3 Start the migration.

All the selected settings are migrated from source Microsoft Outlook to destination Microsoft Outlook 2007.

C.3 Migrating Custom Views

To migrate the Custom View options, perform the following steps:

- 1 In Microsoft Outlook, click *View>Arrange By>Custom*.
- 2 Select the settings that you want to migrate.
- 3 Start the migration.

All the selected settings are migrated from source Microsoft Outlook to destination Microsoft Outlook 2007.

C.4 Migrating Rules and Alerts

To migrate the Rules options, perform the following steps:

- 1 In Microsoft Outlook, click *Tools>Rules*.
- 2 Select the settings that you want to migrate.
- 3 Start the migration.

All the selected settings are migrated from source Microsoft Outlook to destination Microsoft Outlook 2007.

NOTE: You can migrate both Offline and Online rules.

C.5 Migrating Junk E-mail options

To migrate the Junk E-mail options, perform the following steps:

- 1 In Microsoft Outlook, click *Tools >Options>Preferences*.
- 2 Select the settings that you want to migrate.
- 3 Start the migration.

All the selected settings are migrated from source Microsoft Outlook to destination Microsoft Outlook 2007.

NOTE: You can migrate both Offline and Online rules.

C.6 Migrating E-mail Security and Privacy options

To migrate the Privacy options, perform the following steps:

- 1 In Microsoft Outlook, click *Tools> Trust Centre>Privacy Options*.
- 2 Select the settings that you want to migrate.
- 3 Start the migration.

All the selected settings are migrated from source Microsoft Outlook to destination Microsoft Outlook 2007.

To migrate the available E-mail Security options, perform the following steps:

- 1 In Microsoft Outlook, click *Tools>Trust Centre>E-mail Security*.
- 2 Select the settings that you want to migrate.
- 3 Start the migration.

All the selected settings are migrated from source Microsoft Outlook to destination Microsoft Outlook 2007.

C.7 Migrating Signatures

To migrate the options to create and edit signatures for outgoing messages, replies and forwards, perform the following steps:

- 1 In Microsoft Outlook, click *Tools > Options > Mail Format > Signatures*.
- 2 Select the settings that you want to migrate.
- 3 Start the migration.

All the selected settings are migrated from source Microsoft Outlook to destination Microsoft Outlook 2007.

C.8 Migrating Spelling and Auto Correction options

To migrate the Spelling and Auto Correction options, perform the following steps:

- 1 In Microsoft Outlook, click *Tools > Options > Spelling*.
- 2 Select the settings that you want to migrate.
- 3 Start the migration.

All the selected settings are migrated from source Microsoft Outlook to destination Microsoft Outlook 2007.

Supported Settings in Personality Migration

D

The following sections list the settings that you can migrate by using Personality Migration:

- ♦ [Section D.1, “System Settings,” on page 51](#)
- ♦ [Section D.2, “Application Settings,” on page 52](#)

D.1 System Settings

You can migrate the following system settings with ZENworks Personality Migration:

Table D-1 *System Settings*

| Categories | Settings |
|------------------------------------|---|
| Accessibility | ♦ Accessibility |
| Appearance | ♦ Appearance ♦ Desktop Icons ♦ Fonts ♦ Folder Options ♦ Login Screen ♦ Screen Saver ♦ Task Bar ♦ Wallpaper |
| Date and Regional Settings | ♦ Date and Time ♦ Regional Settings |
| Keyboard, Mouse and Other Hardware | ♦ Keyboard ♦ Mouse ♦ Power Options ♦ Local Printers |
| | NOTE: ZENworks 11 SP1 does not support migrating of a network printer although you can select it. |
| Network | ♦ Dialup ♦ Mapped Drives ♦ Networking ♦ Sharepoints |

| Categories | Settings |
|-----------------------|----------|
| Sounds and Multimedia | ◆ Sounds |

NOTE: While migrating system settings such as themes that are unavailable in the operating system on the destination device, then after migration, the default theme of the operating system on the destination device is applied. Some system settings may not be migrated correctly on 64 bit machines.

D.2 Application Settings

Review the following sections to understand the application settings and versions that you can migrate by using ZENworks Personality Migration:

- ◆ [Section D.2.1, “Adobe Applications,” on page 52](#)
- ◆ [Section D.2.2, “Corel Applications,” on page 53](#)
- ◆ [Section D.2.3, “IBM Applications,” on page 53](#)
- ◆ [Section D.2.4, “Microsoft Applications,” on page 53](#)
- ◆ [Section D.2.5, “Palm Applications,” on page 55](#)
- ◆ [Section D.2.6, “Qualcomm Applications,” on page 55](#)
- ◆ [Section D.2.7, “Research in Motion Applications,” on page 55](#)
- ◆ [Section D.2.8, “Sun Applications,” on page 56](#)
- ◆ [Section D.2.9, “America Online Applications,” on page 56](#)
- ◆ [Section D.2.10, “GAIM Applications,” on page 56](#)
- ◆ [Section D.2.11, “Mozilla Foundation Applications,” on page 57](#)
- ◆ [Section D.2.12, “OpenOffice.org Applications,” on page 59](#)

D.2.1 Adobe Applications

You can migrate settings for the following applications with ZENworks Personality Migration:

- ◆ Acrobat 7.0 / 8.0
- ◆ Reader 6.0 / 7.0 / 8.0
- ◆ Illustrator 9.0 / 10.0 / 11.0 / 12.0
- ◆ ImageReady 7.0.1 / 8.0 / 9.0
- ◆ InDesign 2.0 / 3.0 / 4.0
- ◆ PageMaker 7.0
- ◆ Photoshop 7.0 / 8.0 / 9.0
- ◆ Dreamweaver 8.0 / MX / MX 2004
- ◆ Fireworks 8.0 / MX
- ◆ Flash 8.0 / MX
- ◆ Freehand 10.0 / MX

D.2.2 Corel Applications

You can migrate settings for the following applications with ZENworks Personality Migration:

- ♦ Paint Shop Pro 10.0

D.2.3 IBM Applications

You can migrate settings for the following applications with ZENworks Personality Migration:

- ♦ Lotus Notes 6.5

D.2.4 Microsoft Applications

You can migrate settings for the following applications with ZENworks Personality Migration:

- ♦ Access 2000 / 2002 / 2003 / 2007
- ♦ Excel 2000 / 2002 / 2003 / 2007
- ♦ FrontPage 2000 / 2002 / 2003 / 2007
- ♦ PowerPoint 2000 / 2002 / 2003 / 2007
- ♦ Word 2000 / 2002 / 2003 / 2007

You can migrate the following settings for Word:

- ♦ Custom Dictionaries
- ♦ Spelling and Grammar Checking Options
- ♦ Autocorrect Entries and Options
- ♦ Change Tracking Options
- ♦ Document Display Options
- ♦ Print Options
- ♦ Default Template
- ♦ Toolbars
- ♦ Assistant Options
- ♦ Internet Explorer 5.0 / 5.5 / 6.0 / 7.0 / 8.0

You can migrate the following settings for Internet Explorer:

- ♦ Homepage
- ♦ Favorites
- ♦ Cookies (store only)
- ♦ Cookie Permissions
- ♦ Custom Fonts and Colors
- ♦ Pop-up Permissions
- ♦ Proxy Settings
- ♦ Language Settings

- ♦ Security Settings
- ♦ Advanced Settings
- ♦ MSN Messenger 7.0 / 7.5 / 8.0
- ♦ Office Shortcut Bar 2000 / 2002
- ♦ Outlook 2000 / 2002 / XP / 2003 / 2007

You can migrate the following settings for Outlook:

| Settings | Options |
|----------|--|
| Email | <ul style="list-style-type: none"> ♦ Account Details: Mail server name and login names ♦ Account Passwords (Store only) ♦ E-Mail messages and Directory structure ♦ E-Mail marked as Read or Unread ♦ Security Options: Connect via SSL, secure authentication ♦ Signatures ♦ Composition preferences (HTML, rich text, or plain text) ♦ Account settings such as Leave on Server and Server timeout ♦ Incoming mail rules (Outlook to Outlook only) ♦ Frequency of sending/receiving messages (Outlook to Outlook only) ♦ Outlook data files ♦ Offline folders file ♦ Junk e-mail options ♦ Custom Dictionary ♦ Spelling and Auto Correction |
| Calendar | <ul style="list-style-type: none"> ♦ Calendar Entries ♦ Reminder Time and Options ♦ Appointment Recurrence Options ♦ Work Day and Week Settings |
| Contact | <ul style="list-style-type: none"> ♦ Contact Entries ♦ Distribution List Entries ♦ Default Contact Display Name ♦ Default Contact Sort Order ♦ Contact Nick Names |
| Task | <ul style="list-style-type: none"> ♦ Task Entries ♦ Reminder Time Options ♦ Task Recurrence Options |

NOTE: To migrate the Microsoft Outlook `archive.pst` file from a customized location, store and apply the Microsoft Outlook settings from an administrator's account.

- ♦ Outlook Express 5.0 / 6.0

You can migrate the following settings for Outlook Express:

| Settings | Options |
|----------|--|
| Email | <ul style="list-style-type: none"> ♦ Account Details: Mail server name and login names ♦ Account Password (Store only) ♦ E-Mail messages ♦ E-Mail marked as Read or Unread ♦ Security Options: Connect via SSL, secure authentication ♦ Signatures ♦ Composition preferences (HTML, rich text, or plain text) ♦ Account settings such as Leave on Server and Server timeout ♦ Email Directory Structure |
| Contact | <ul style="list-style-type: none"> ♦ Contact Entries ♦ Distribution List Entries |

- ♦ Project 2000 / 2003 / 2007
- ♦ Publisher 2002 / 2003 / 2007
- ♦ NetMeeting 3.0
- ♦ Visio 2000 / 2002 / 2003 / 2007
- ♦ Windows Media Player 9.0 / 10.0
- ♦ Windows Media Player Audio 8.0
- ♦ Windows Media Player Video
- ♦ Mail
- ♦ Infopath

D.2.5 Palm Applications

You can migrate settings for the following applications with ZENworks Personality Migration:

- ♦ Palm Desktop 4.0 / 4.1

D.2.6 Qualcomm Applications

You can migrate settings for the following applications with ZENworks Personality Migration:

- ♦ Eudora 6.2

D.2.7 Research in Motion Applications

You can migrate the following applications with ZENworks Personality Migration:

- ♦ BlackBerry Desktop 4.0 / 4.1

D.2.8 Sun Applications

You can migrate the following applications with ZENworks Personality Migration:

- ♦ StarOffice Writer 8.0

D.2.9 America Online Applications

You can migrate the following applications with ZENworks Personality Migration:

- ♦ AOL Instant Messenger 6.0

You can migrate the following settings for AOL Instant Messenger:

| Application | Settings |
|-----------------------|---|
| AOL Instant Messenger | <ol style="list-style-type: none">1. Account Information<ul style="list-style-type: none">♦ Screen Names♦ Password Preferences♦ Autologin Preferences♦ Connection and Proxy Settings2. Account Settings<ul style="list-style-type: none">♦ Buddy List Preferences♦ Privacy Options♦ Sign in Options♦ Notification Options♦ Notification Sound Files♦ IM/Chat Preferences♦ Font and Window Color Options♦ Away/Idle Messages and Options♦ Stock Ticker Information |

D.2.10 GAIM Applications

You can migrate the following applications with ZENworks Personality Migration:

- ♦ GAIM 1.2 / 1.3 / 1.4 / 1.5 / 2.0

You can migrate the following settings for GAIM:

| Application | Settings |
|-------------|--|
| GAIM | <ol style="list-style-type: none">1. Account Information<ul style="list-style-type: none">♦ Screen Names♦ Password Preferences♦ Autologin Preferences♦ Connection and Proxy Settings♦ Protocol and Server Settings2. Account Settings<ul style="list-style-type: none">♦ Buddy List Preferences♦ Notification Options♦ Notification Sound Files♦ IM/Chat Preferences♦ Away/Idle Messages and Options♦ Message Format Options |

D.2.11 Mozilla Foundation Applications

You can migrate the following applications with ZENworks Personality Migration:

- ♦ Firefox 0.9 / 0.10 / 1.0 / 1.5 / 2.0 / 3.0.x / 3.5.x

You can migrate the following settings for Firefox:

- ♦ Homepage
- ♦ Bookmarks
- ♦ Cookies
- ♦ Cookie Permissions
- ♦ Custom Fonts and Colors
- ♦ Pop-up Permissions
- ♦ Proxy and Connection Settings
- ♦ Language Settings
- ♦ Download Manager Options
- ♦ Advanced Settings
- ♦ Mozilla 1.7 / 1.8

You can migrate the following settings for Mozilla:

- ♦ Homepage
- ♦ Bookmarks
- ♦ Cookies
- ♦ Cookie Permissions
- ♦ Custom Fonts and Colors

- ♦ Pop-up Permissions
- ♦ Proxy Settings
- ♦ Language Settings
- ♦ Download Manager Options
- ♦ Advanced Settings
- ♦ Mail 1.6 / 1.7 / 1.8

You can migrate the following settings for Mail:

| Settings | Options |
|----------|---|
| Email | <ul style="list-style-type: none"> ♦ Account Details: Mail server name and login names ♦ Account Passwords ♦ E-Mail messages and Directory Structures ♦ E-Mail marked as Read or Unread ♦ Security Options: Connect via SSL, secure authentication ♦ Signatures ♦ Composition preferences (HTML or Plain text) ♦ Account settings such as Leave on Server and Server timeout ♦ Incoming Mail Rules (from Mozilla/Thunderbird only) |
| Contact | <ul style="list-style-type: none"> ♦ Contact Entries |

- ♦ Thunderbird 0.8 / 1.0 / 1.5

You can migrate the following settings for Thunderbird:

| Settings | Options |
|----------|---|
| Email | <ul style="list-style-type: none"> ♦ Account Details: Mail server name and login names ♦ Account Passwords ♦ E-Mail messages and Directory Structures ♦ E-Mail marked as Read or Unread ♦ Security Options: Connect via SSL, secure authentication ♦ Signatures ♦ Composition preferences (HTML or Plain text) ♦ Account settings such as Leave on Server, and Server timeout |

D.2.12 OpenOffice.org Applications

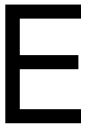
You can migrate the following applications with ZENworks Personality Migration:

- ♦ OpenOffice.org Writer 1.1 / 2.0

You can migrate the following settings for OpenOffice.org Writer:

- ♦ Custom Dictionaries
- ♦ Spell Check Options
- ♦ Autocorrect Entries and Options
- ♦ Change Tracking Options
- ♦ Document Display Options
- ♦ Default Template
- ♦ Toolbars
- ♦ Filepaths

Understanding Variables



Variables are strings that contain paths to system directories such as Program Files and My Pictures. These variables are enclosed by the percent (%) symbol. The values for these variables are automatically set when Personality Migration starts.

For example, the %os% variable expands the directory where the operating system is installed on the device. For more information on how to migrate the variables, see [Section 5.1.2, “Using the Template Builder to Create a Template,”](#) on page 28

The following table describes the variables that are used in Personality Migration. The table lists the values for Windows XP and Windows 7, but the variables can be used on all supported operating systems. The examples assume that the operating systems are installed on the C:\ drive.

| Variable | Description | Value for Windows XP | Value for Windows 7 |
|-----------------------|---|---|---|
| applicationdata | The Application Data directory that contains application-specific data for the current user | C:\Documents and Settings\username\ Application Data | C:\Users\username\ \AppData\Roaming |
| commonapplicationdata | The Application Data directory that is common to all users | C:\Documents and Settings\All Users\Application Data | C:\ProgramData |
| commondesktop | The Desktop directory that is common to all users | C:\Documents and Settings\All Users\Desktop | C:\Users\Public\D esktop |
| commondocuments | The Documents directory that contains documents that are common to all users | C:\Documents and Settings\All Users\Documents | C:\Users\Public\D ocuments |
| commonprogramfiles | The Common Files directory that contain files common to various applications | C:\Program Files\Common Files | C:\Program Files\Common Files |
| commonstartmenu | The Start Menu directory that contains the Start menu items common to all users | C:\Documents and Settings\All Users\Start Menu | C:\ProgramData\Mi crosoft\Windows\S tart Menu |
| computername | Name of the device | If the hostname is <i>abc</i> , the value of the variable is <i>abc</i> | If the hostname is <i>abc</i> , the value of the variable is <i>abc</i> |
| cookies | The Cookies directory that contains the browser cookies | C:\Documents and Settings\username\ Cookies | C:\Users\ username\ \AppData\Roaming\ Microsoft\Windows \Cookies |

| Variable | Description | Value for Windows XP | Value for Windows 7 |
|----------------------|---|---|---|
| desktop | The logical desktop for the current user | C:\Documents and Settings\ username \Desktop\ | C:\Users\username \Desktop\ |
| favorites | The Favorites directory that contains the favorite items for the current user | C:\Documents and Settings\ username \Favorites | C:\Users\ username\Favorites |
| fonts | The Fonts directory that contains system fonts | C:\WINDOWS\Fonts | C:\WINDOWS\Fonts |
| history | The History directory that contains the browser history for the current user | C:\Documents and Settings\ username\Local Settings\History | C:\Users\ username \AppData\Local\Microsoft\Windows\History |
| internetcache | The Temporary Internet Files directory that contain the temporary Internet files for the current user | C:\Documents and Settings\username\ Local Settings\Temporary Internet Files | C:\Users\username \AppData\Local\Microsoft\Windows\Temporary Internet Files |
| localapplicationdata | The directory that contains the local application-specific data that is used by the current user | C:\Documents and Settings\ username \Local Settings\Application Data | C:\Users\ username \AppData\Local |
| mymusic | The My Music directory for the current user | C:\Documents and Settings\ username\My Documents\My Music | C:\Users\ username\Music |
| mypictures | The My Pictures directory for the current user | C:\Documents and Settings\ username\My Documents\My Pictures | C:\Users\ username\Pictures |
| myvideo | The My Video directory for the current user | C:\Documents and Settings\username\ My Documents\My Videos | C:\Users\username \Videos |
| os | The Windows install directory | C:\WINDOWS | C:\Windows |
| personal | The directory that contains the user's documents | C:\Documents and Settings\username\ My Documents | C:\Users\username \Documents |
| profile | The directory that contains the current user's profile | C:\Documents and Settings\username | C:\Users\username |
| profiles | The directory that contains the All Users profile | C:\Documents and Settings | C:\Users |

| Variable | Description | Value for Windows XP | Value for Windows 7 |
|---------------|--|---|---|
| programs | The Programs directory | C:\Documents and Settings\username\Start Menu\Programs | C:\Users\username\AppData\Roaming\Microsoft\Windows\Start Menu\Programs |
| quicklaunch | The Quick Launch directory | C:\Documents and Settings\username\Application Data\Microsoft\Internet Explorer\Quick | C:\Users\username\AppData\Roaming\Microsoft\Internet Explorer\Quick Launch |
| recent | The directory that contains shortcuts to the documents recently used by the user | C:\Documents and Settings\username\Recent | C:\Users\username\AppData\Roaming\Microsoft\Windows\Recent |
| sendto | The SendTo directory that contains the Send To menu items | C:\Documents and Settings\username\SendTo | C:\Users\username\AppData\Roaming\Microsoft\Windows\SendTo |
| startmenu | The Start Menu directory that contains the Start menu items | C:\Documents and Settings\username\Start Menu | C:\Users\username\AppData\Roaming\Microsoft\Windows\Start Menu |
| startup | The Startup directory that contains the startup items for the user | C:\Documents and Settings\username\Start Menu\Programs\Startup | C:\Users\username\AppData\Roaming\Microsoft\Windows\Start Menu\Programs\Startup |
| system | The System directory | C:\WINDOWS\system32 | C:\WINDOWS\system32 |
| tempdirectory | The Temp directory that contains the temporary files | C:\DOCUMENT~1\username\LOCALS~1\Temp\ | C:\Users\username\AppData\Local\Temp\ |
| templates | The Template directory that stores document templates | C:\Documents and Settings\username\Templates | C:\Users\username\AppData\Roaming\Microsoft\Windows\Templates |
| username | The name of the currently logged-in user | If the username is <i>abc</i> , the value of the variable is <i>abc</i> . | If the username is <i>abc</i> , the value of the variable is <i>abc</i> . |

Cross-User Migration Scenarios

F

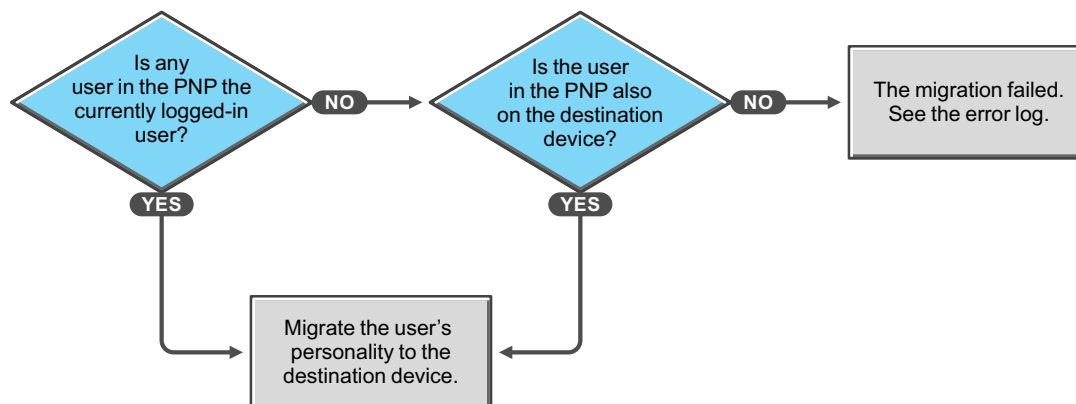
The flowcharts in this section describe the various scenarios you might encounter while migrating user personalities.

- ♦ Section F.1, “Migration Scenarios If the PNP file has the personalities of all users,” on page 65
- ♦ Section F.2, “Migration Scenarios If the PNP file has the personality of the currently logged-in user,” on page 66
- ♦ Section F.3, “Migration Scenarios If the PNP File has the Personality of a Specific User,” on page 67
- ♦ Section F.4, “Migration Scenarios If the PNP File has the Personalities of Multiple Specific Users,” on page 69

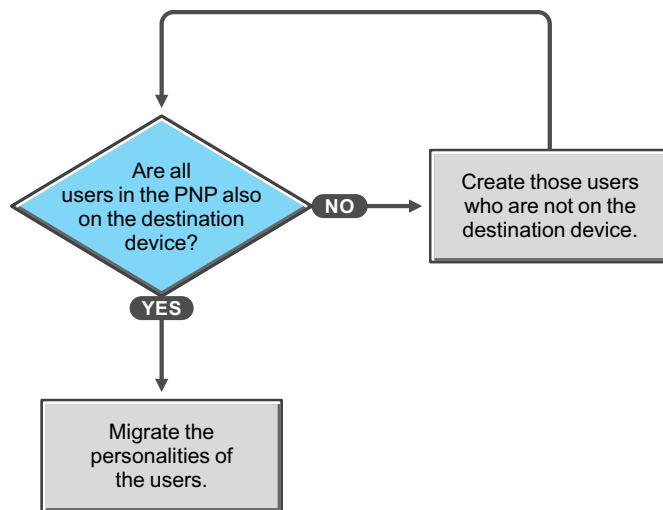
F.1 Migration Scenarios If the PNP file has the personalities of all users

- ♦ Scenario 1: Selecting the template option *Migrate the settings for the currently logged in user*
- ♦ Scenario 2: Selecting the template option *All users to migrate*
- ♦ Scenario 3: Selecting the template option *Add users to migrate*, and specify a user

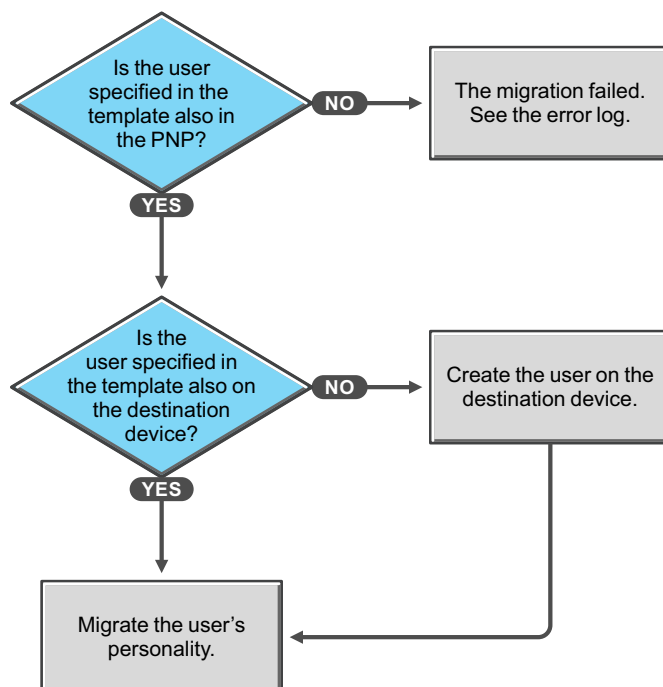
Scenario 1: Selecting the template option *Migrate the settings for the currently logged in user*



Scenario 2: Selecting the template option *All users to migrate*



Scenario 3: Selecting the template option *Add users to migrate*, and specify a user



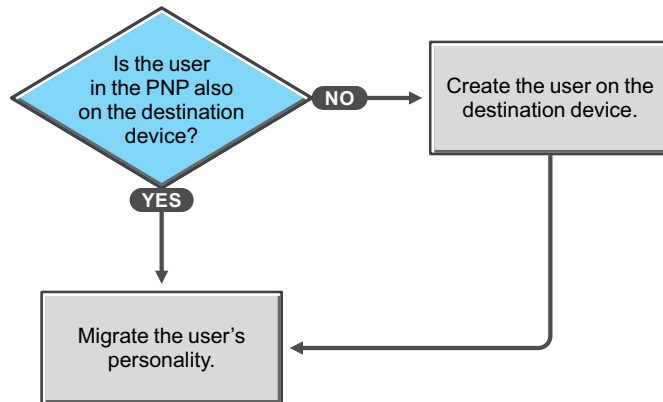
F.2 Migration Scenarios If the PNP file has the personality of the currently logged-in user

- ♦ [Scenario 4: Selecting the template option Migrate the settings for the currently logged in user](#)
- ♦ [Scenario 5: Selecting the template option All users to migrate](#)
- ♦ [Scenario 6: Selecting the template option Add users to migrate, and you specify a user](#)

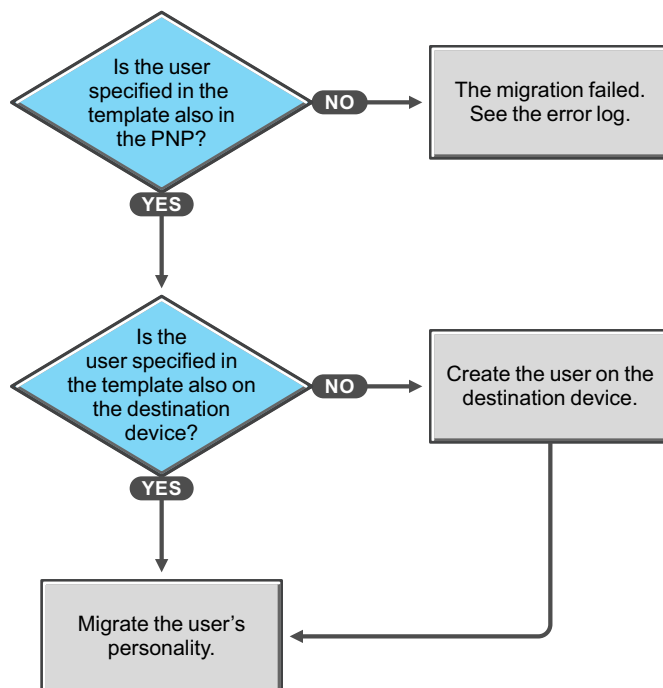
Scenario 4: Selecting the template option *Migrate the settings for the currently logged in user*

Migrate the user's personality without mapping the users by their names.

Scenario 5: Selecting the template option *All users to migrate*



Scenario 6: Selecting the template option *Add users to migrate*, and you specify a user

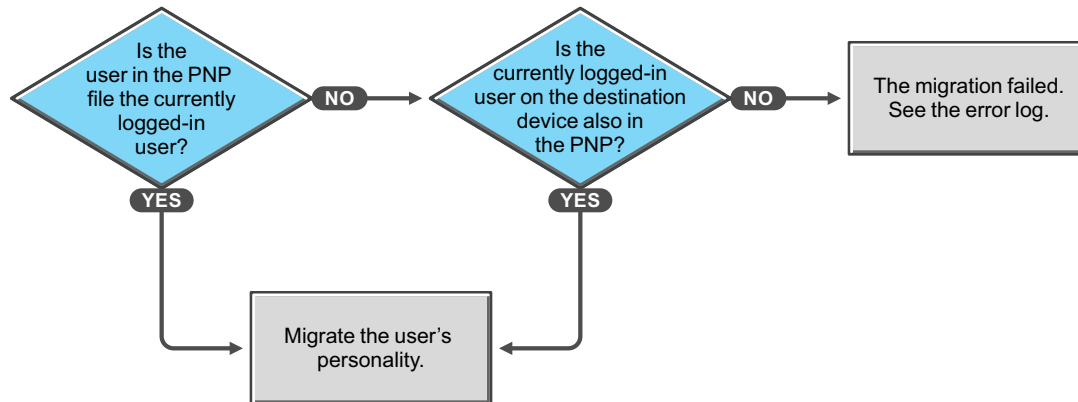


F.3 Migration Scenarios If the PNP File has the Personality of a Specific User

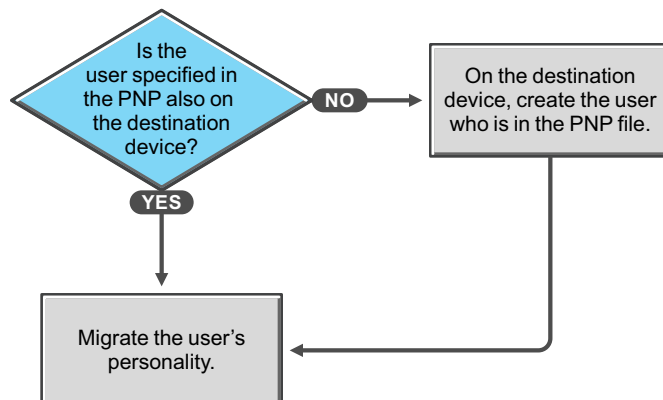
- ♦ [Scenario 7: Selecting the template option Migrate the settings for the currently logged in user](#)

- ♦ Scenario 8: Selecting the template option *All users to migrate*
- ♦ Scenario 9: Selecting the template option *Add users to migrate*, and you specify a user

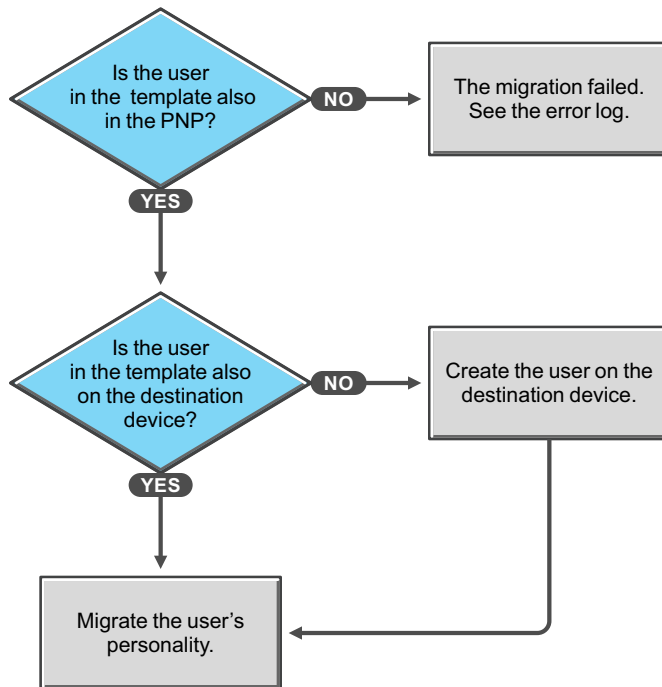
Scenario 7: Selecting the template option *Migrate the settings for the currently logged in user*



Scenario 8: Selecting the template option *All users to migrate*



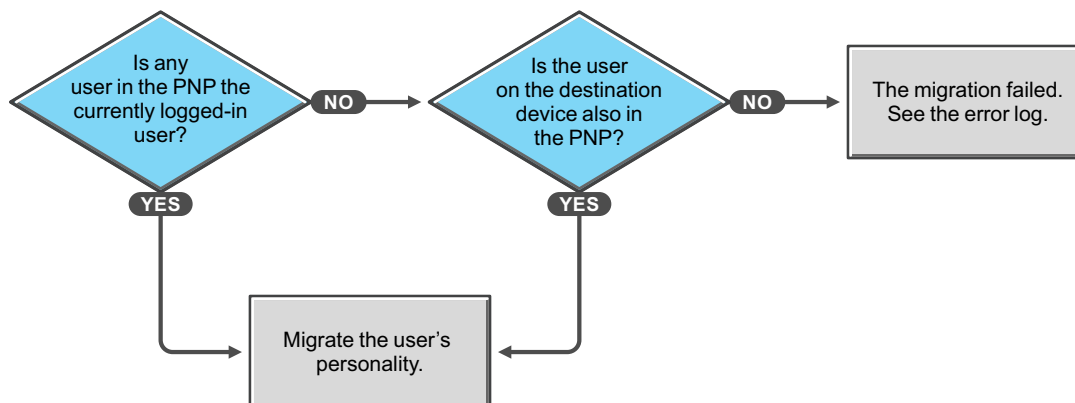
Scenario 9: Selecting the template option *Add users to migrate*, and you specify a user



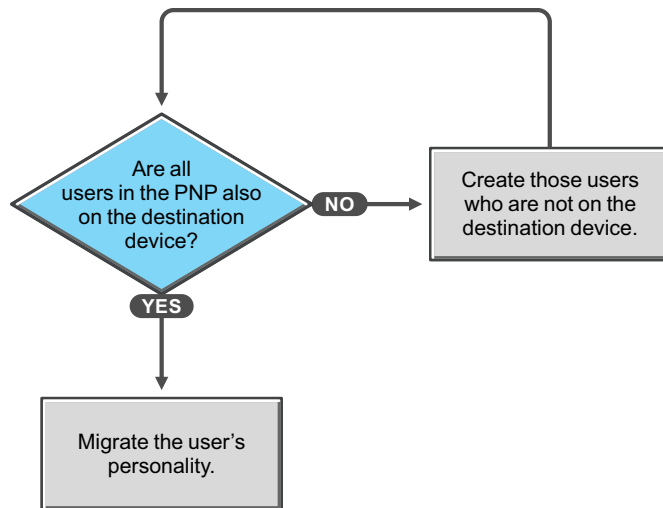
F.4 Migration Scenarios If the PNP File has the Personalities of Multiple Specific Users

- [Scenario 10: Selecting the template option *Migrate the settings for the currently logged in user*](#)
- [Scenario 11: Selecting the template option *All users to migrate*](#)
- [Scenario 12: Selecting the template option *Add users to migrate*, and you specify multiple users](#)

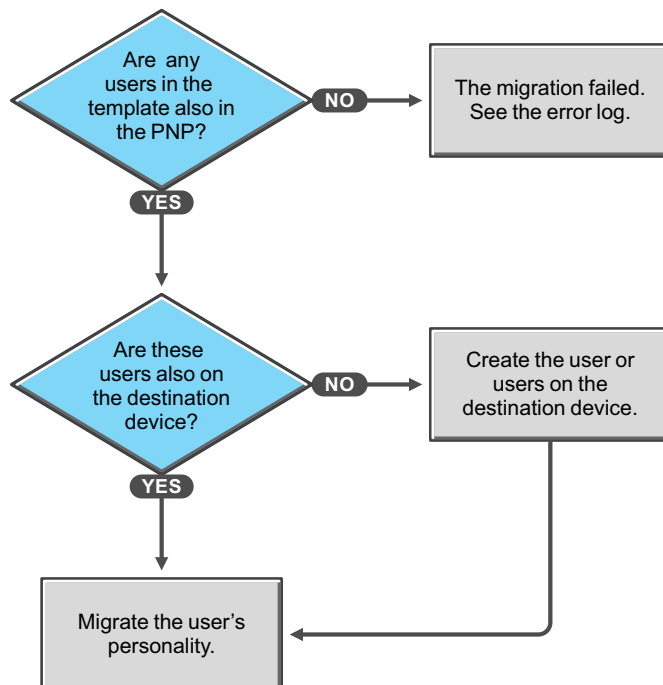
Scenario 10: Selecting the template option *Migrate the settings for the currently logged in user*



Scenario 11: Selecting the template option *All users to migrate*



Scenario 12: Selecting the template option *Add users to migrate*, and you specify multiple users



Documentation Updates



This section contains information on documentation content changes that were made in this *Personality Migration Reference* for Novell ZENworks 11 Configuration Management. The information can help you to keep current on updates to the documentation.

The documentation for this product is provided on the Web in two formats: HTML and PDF. The HTML and PDF documentation are both kept up-to-date with the changes listed in this section.

If you need to know whether a copy of the PDF documentation that you are using is the most recent, the PDF document includes a publication date on the title page.

The documentation was updated on the following date:

- ♦ [Section G.1, “August 08, 2011: 11 SP1,” on page 71](#)

G.1 August 08, 2011: 11 SP1

| Change | Location |
|---|--|
| Section D.2.4, “Microsoft Applications,” on page 53 | Updated the section to include support for Microsoft Outlook 2007. |
| Section 2.2, “Prerequisite,” on page 11 | Added this new section to the document. |

