

Novell SecureLogin

6.0 SP1

October 13, 2006

USER GUIDE

www.novell.com



Novell®

Legal Notices

Novell, Inc. makes no representations or warranties with respect to the contents or use of this documentation, and specifically disclaims any express or implied warranties of merchantability or fitness for any particular purpose. Further, Novell, Inc. reserves the right to revise this publication and to make changes to its content, at any time, without obligation to notify any person or entity of such revisions or changes.

Further, Novell, Inc. makes no representations or warranties with respect to any software, and specifically disclaims any express or implied warranties of merchantability or fitness for any particular purpose. Further, Novell, Inc. reserves the right to make changes to any and all parts of Novell software, at any time, without any obligation to notify any person or entity of such changes.

Any products or technical information provided under this Agreement may be subject to U.S. export controls and the trade laws of other countries. You agree to comply with all export control regulations and to obtain any required licenses or classification to export, re-export or import deliverables. You agree not to export or re-export to entities on the current U.S. export exclusion lists or to any embargoed or terrorist countries as specified in the U.S. export laws. You agree to not use deliverables for prohibited nuclear, missile, or chemical biological weaponry end uses. Please refer to www.novell.com/info/exports/ for more information on exporting Novell software. Novell assumes no responsibility for your failure to obtain any necessary export approvals.

Copyright © 2006 Novell, Inc. All rights reserved. No part of this publication may be reproduced, photocopied, stored on a retrieval system, or transmitted without the express written consent of the publisher.

Novell, Inc. has intellectual property rights relating to technology embodied in the product that is described in this document. In particular, and without limitation, these intellectual property rights may include one or more of the U.S. patents listed at <http://www.novell.com/company/legal/patents/> and one or more additional patents or pending patent applications in the U.S. and in other countries.

Novell, Inc.
404 Wyman Street, Suite 500
Waltham, MA 02451
U.S.A.
www.novell.com

Online Documentation: To access the online documentation for this and other Novell products, and to get updates, see www.novell.com/documentation.

Novell Trademarks

For a list of Novell trademarks, see [Trademark and Service Mark List \(http://www.novell.com/company/legal/trademarks/tmlist.html\)](http://www.novell.com/company/legal/trademarks/tmlist.html).

Third-Party Materials

All third-party trademarks are the property of their respective owners.

Contents

About This Guide	7
1 Overview	9
1.1 SecureLogin Icon	9
2 Accessing SecureLogin	11
3 Automatically Logging In to Applications	13
3.1 Responding to Pop-Up Prompts	13
3.1.1 Prompts for Windows Applications	13
3.1.2 Prompts for Web Pages	14
3.1.3 Prompts for Applications With Predefined Application Definition	14
3.2 Enabling Applications for Single Sign-On	15
3.2.1 Enabling Applications With Predefined Application Definition	15
3.2.2 Enabling a Windows Application	16
3.2.3 Enabling a Web Application	18
3.2.4 Enabling a Java Application	19
4 Login IDs	23
4.1 Creating a Login ID	23
4.1.1 Entering Credentials	25
4.1.2 Linking a Login to an Application	25
5 Changing Preferences	27
5.1 Disabling the Workstation's Cache	27
5.2 Clearing the Cache	28
5.3 Temporarily Disabling SecureLogin	28
5.4 Changing Your Passphrase	29
6 Password Policies	31
6.1 Creating a Password Policy	31
6.2 Viewing or Editing a Password Policy	32
6.3 Deleting a Password Policy	32

About This Guide

This document contains information on the following:

- ◆ Chapter 1, “Overview,” on page 9
- ◆ Chapter 2, “Accessing SecureLogin,” on page 11
- ◆ Chapter 3, “Automatically Logging In to Applications,” on page 13
- ◆ Chapter 4, “Login IDs,” on page 23
- ◆ Chapter 5, “Changing Preferences,” on page 27
- ◆ Chapter 6, “Password Policies,” on page 31

Feedback

We want to hear your comments and suggestions about this manual and the other documentation included with this product. Please use the User Comments feature at the bottom of each page of the online documentation, or go to www.novell.com/documentation/feedback.html and enter your comments there.

Documentation Updates

This is the Support Pack 1 (SP1) release for Novell SecureLogin 6.0. The version for this support pack in the product is, 6.0.103.

For the most recent version of the *User Guide*, visit the [Novell Documentation Web site \(http://www.novell.com/documentation/securelogin60\)](http://www.novell.com/documentation/securelogin60).

Additional Documentation

This *User Guide* is a part of documentation set for SecureLogin 6.0 SP1. Other documents include:

- ◆ *Novell SecureLogin 6.0 SP1 Overview*
- ◆ *Novell SecureLogin 6.0.SP1 Administration Guide*
- ◆ *Novell SecureLogin 6.0 SP1 Installation Guide*
- ◆ *Novell SecureLogin 6.0 SP1 Application Definition Guide*
- ◆ *Novell SecureLogin 6.0 SP1 Citrix and Terminal Services Guide*
- ◆ *Novell SecureLogin 6.0 SP1 Configuration Guide for Terminal Emulation*

Documentation Conventions

In Novell documentation, a greater-than symbol (>) is used to separate actions within a step and items in a cross-reference path.

A trademark symbol (® , ™, etc.) denotes a Novell trademark. An asterisk (*) denotes a third-party trademark.

When a single pathname can be written with a backslash for some platforms or a forward slash for other platforms, the pathname is presented with a backslash. Users of platforms that require a forward slash, such as Linux or UNIX, should use forward slashes as required by your software.

Overview

1

Novell® SecureLogin eliminates the requirement for users to remember multiple user names and passwords beyond their initial network logon. It stores user names and passwords and automatically enters them for users when required. Users no longer need to remember and manually enter credentials, such as user names and passwords, to log onto applications.

It is comprised of multiple, integrated security systems that provide authentication and SSO to networks and applications. Provides a single entry point to the corporate network and its user resources, increasing security while enhancing compliance with corporate security policies. SecureLogin utilities and components are designed to single sign-on enable Windows*, Web and Terminal Emulator applications.

SecureLogin has wizards, iManager plug-ins, and tools which make it easy to configure centrally for use on the corporate network. It includes a management utility that allows users to view their single sign-on details and, if permitted, to single sign-on enable applications.

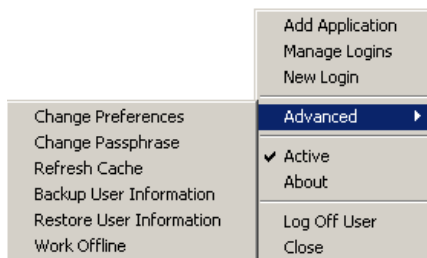
1.1 SecureLogin Icon

By default, the installation program places the Novell SecureLogin icon on the task bar (system tray).



This icon is a shortcut to SecureLogin functionality on workstations. To use the shortcut:

- 1 Right-click the SecureLogin icon on the task bar.
- 2 Select the task that you want to complete.



For example, select Manage Logins to open the Personal Management Utility of SecureLogin.

The following table provides information on the tasks:


Option	Description
Add Applications	Starts the Add Applications Wizard. Enables an application for single-sign on by creating a script that automates the login.

Option	Description
Manage Logins	Brings up the Personal Management Utility of SecureLogin. Adds login IDs (login credentials), links login IDs to applications, manages password policies, and manages SecureLogin settings.
New Login	Enables you to create multiple single sign-ons or login IDs for an application. For example, if you have three accounts on the same application, SecureLogin manages the three sets of credentials. SecureLogin provides the option to select the preferred account when the application starts.
Advanced > Change Preferences	Opens the Personal Management Utility of SecureLogin, with the Preferences option selected.
Advanced > Change Passphrase	Enables you to change your passphrase question or passphrase answer.
Advanced > Refresh Cache	Refreshes the local cache settings and updates caches with any changes made at the associated container or organizational unit level.
Advanced > Backup User Information	Backs up the SecureLogin user information into a file.
Advanced > Restore User Information	Restores SecureLogin information from the back up file.
Advanced > Work Online/Offline	Toggles between the online and offline states of SecureLogin. When you work offline, SecureLogin uses the local (secondary) cache rather than the directory. This option is not displayed in Standalone mode.
Active	Determines whether SecureLogin is enabled (active) or disabled.
About	Displays the SecureLogin version number and the status of the data stores. The primary data store is the directory. The secondary is the local cache.
Log User Off Windows	Enables you to shut down all programs, including SecureLogin, and log off from the workstation. Performs the same function as the Shut Down > Log Off option on the Windows Start menu.
Close	Shuts SecureLogin down.

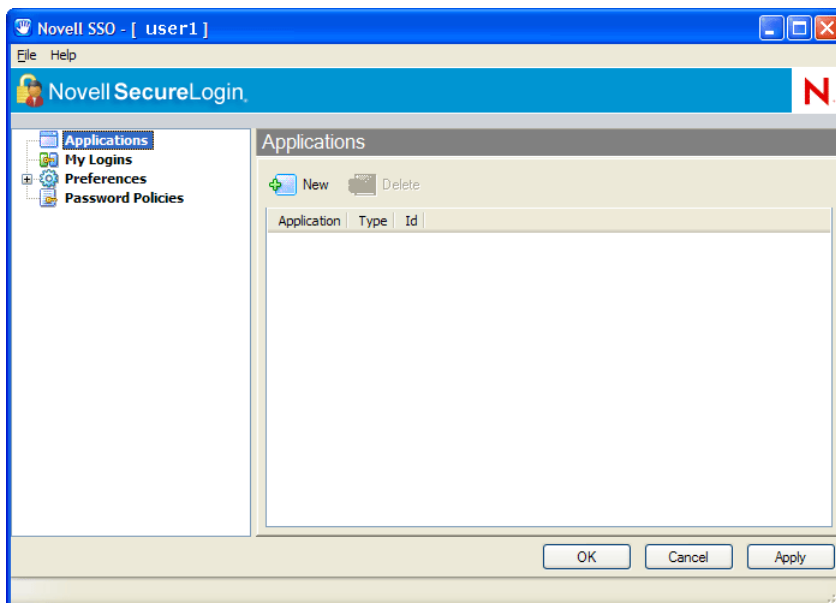
Accessing SecureLogin

2

Novell® SecureLogin runs on your workstation. To access the Personal Management Utility of SecureLogin, do one of the following:

- ◆ Click *Start > Programs > Novell SecureLogin > Novell SecureLogin*.
- ◆ Double-click the SecureLogin icon  on the task bar.
- ◆ Right-click the SecureLogin icon on the task bar, then select *Manage Logins*.

The following figure illustrates the Personal Management Utility of SecureLogin:



Changes made in the Personal Management Utility of SecureLogin apply to the User object. They override any settings made at the directory container or organizational unit level. Use the Personal Management Utility for the following tasks:

- ◆ Configure standalone installs.
- ◆ Test changes to preferences.
- ◆ Create or modify application definitions for testing, before mass deployment.
- ◆ Configure a specific user (for example, the Administrator) within a container, so that the container settings do not apply.
- ◆ Troubleshoot (for example, disable SecureLogin and then manually log in to an application).

Automatically Logging In to Applications

3

Novell® SecureLogin uses application definitions to automatically log you in to Windows*, Web, or Java applications. An application definition is a set of instructions. SecureLogin has predefined application definitions for some of the applications. You can use the Add Applications Wizard to create new application definitions.

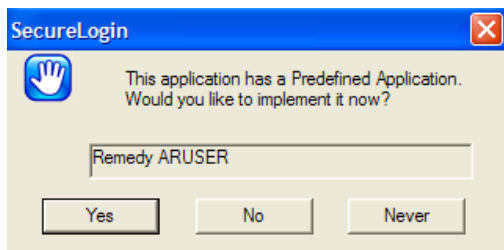
The Wizard captures and stores your login name (username), password, and any other information required for authentication. Application definitions are stored in a local database on your workstation and in the directory.

3.1 Responding to Pop-Up Prompts

After SecureLogin is installed on your desktop, SecureLogin watches for applications that are not enabled for single sign-on. Upon detecting such an application, SecureLogin prompts you to use a wizard to enable those applications for single sign-on and thereby simplify future logins.

3.1.1 Prompts for Windows Applications

After detecting a Windows login panel, SecureLogin displays the following dialog box. (If the application has a predefined application definition, the initial text varies.)

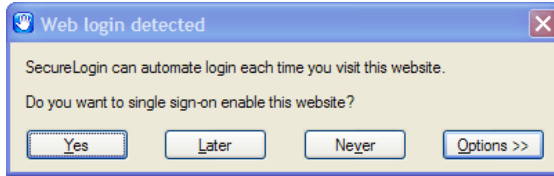


You can choose not to enable single sign-on for this application. If you select *Never*, SecureLogin generates a blank script for this application and does not prompt you again. If you select *No*, SecureLogin prompts you the next time you launch the same application.

If you click *Yes*, SecureLogin launches the Add Applications Wizard, which guides you through the setup and creates a script for the login panel. The next time you open the application, SecureLogin authenticates it for you.

3.1.2 Prompts for Web Pages

When you navigate to a Web page that has a login field and then submit your login information, SecureLogin prompts you whether to enable single sign-on for the site, for only the current page, or not at all.

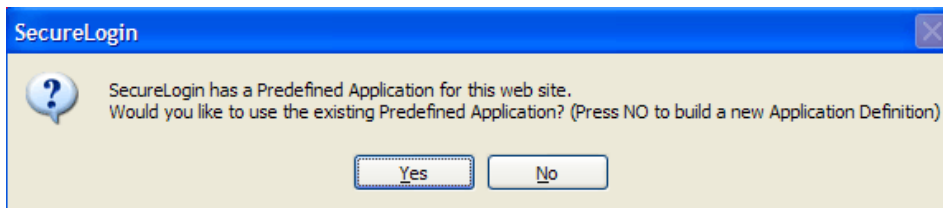


If you click *Yes*, SecureLogin extracts the login information from the Web page and stores it for future single sign-on authentication.

Option	Description
Yes	Creates an application definition, automatically reads the credentials entered into the browser, and stores the credentials against suitable variables. The next time the Web page is loaded, SecureLogin enters your credentials.
Later	Does not create an application definition. The next time the Web page is loaded, SecureLogin displays the prompt again.
Never	Creates a blank application definition with no variables. The next time the Web page is loaded, you are not automatically logged in or prompted to enable the Web page for single sign-on.
Options	Allows you to view or hide the description of the detected application and the SecureLogin proceeds with login after entering your credentials check box.

3.1.3 Prompts for Applications With Predefined Application Definition

When SecureLogin detects a login panel for an application that has a predefined application definition, SecureLogin prompts you with the option to implement that application definition. The following figure illustrates a prompt for a Web site:



To enable the application definition, click *Yes*, then enter the required credentials. SecureLogin logs you into the application whenever the application is launched.

To ignore the prompt, click *No*. The next time SecureLogin detects the application's login panel, SecureLogin displays this prompt again, unless you create a new application definition for the application.

3.2 Enabling Applications for Single Sign-On

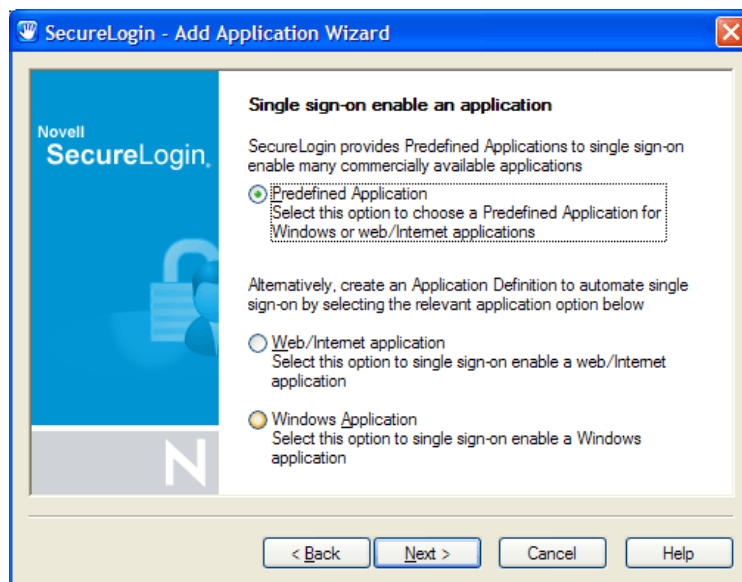
If a pop-up prompt does not appear when you launch a new application, use the Add Application Wizard to enable the application for single sign-on. The Wizard creates application definition that captures your login credentials. The next time you launch the application, SecureLogin uses the application definition to automatically log you in.

3.2.1 Enabling Applications With Predefined Application Definition

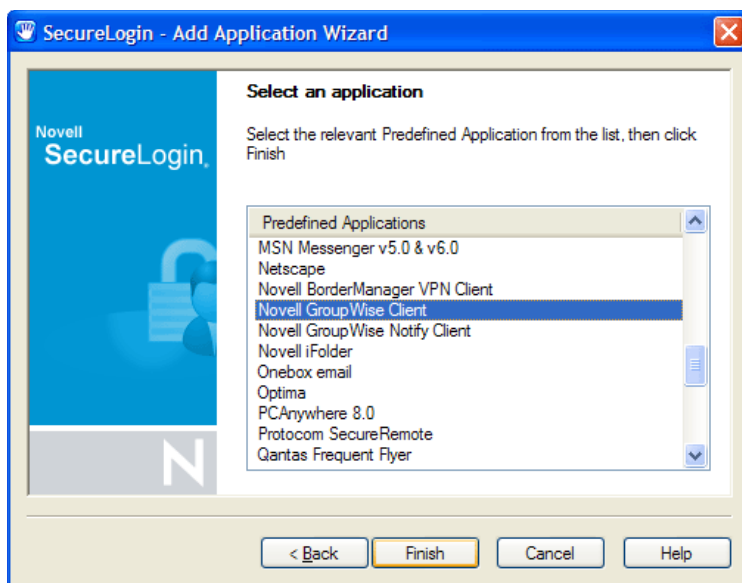
Application definitions store certain login information so that it can be used again and again. To save you the time and trouble of setting up application definitions, SecureLogin provides predefined application definitions for many applications.

To enable an application that has a predefined application definition:

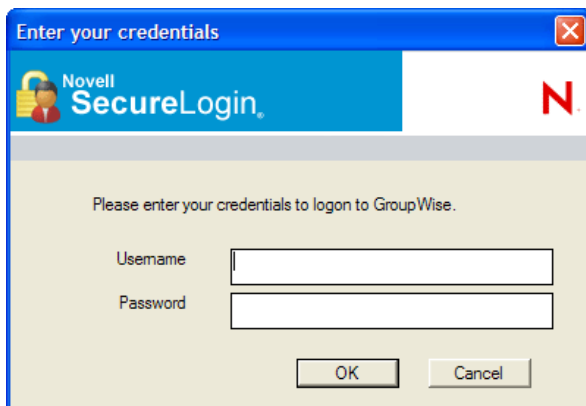
- 1 Right-click the SecureLogin icon on the task bar, then click *Add Applications*.
- 2 In the Welcome window, click *Next*.
- 3 Click *Predefined Application*, then click *Next*.



- 4 Select the application from the list, then click *Finish*.



- 5 The next time you launch the application, SecureLogin prompts you to enter login variables.



After you specify the variables (typically, Username and Password) and click *OK*, SecureLogin saves this data and logs you in. This data is a login ID. For subsequent launches, SecureLogin uses this login ID to automatically log you in.

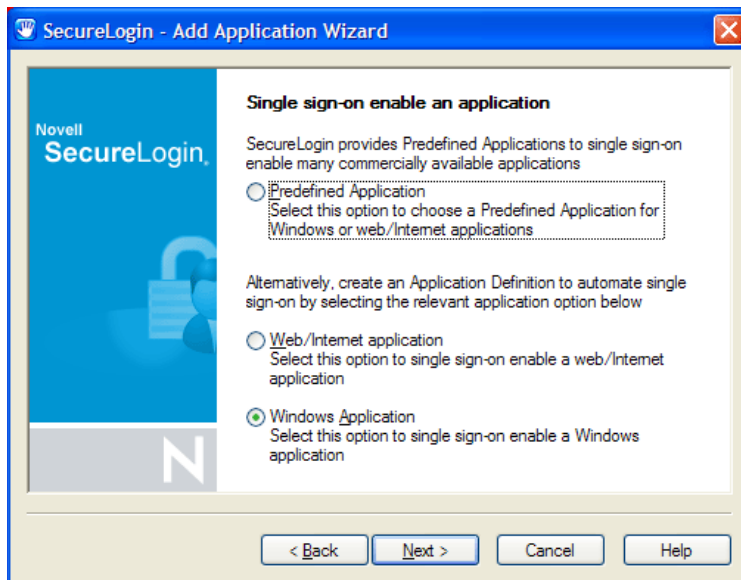
3.2.2 Enabling a Windows Application

The following steps apply when SecureLogin does not automatically detect a new application. If SecureLogin detects a new application and launches the Add Application Wizard, go to Step 6. For information on the pop-up prompt of SecureLogin, see [Section 3.1, “Responding to Pop-Up Prompts,” on page 13](#).

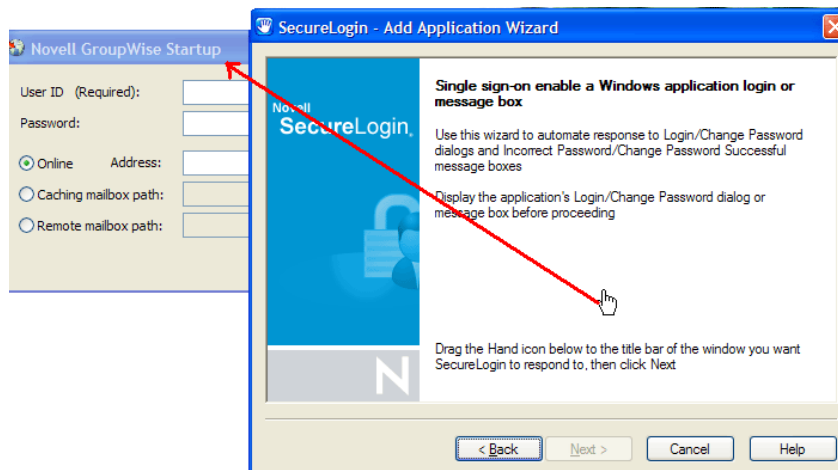
- 1 Launch the application and drag the login panel to one side of the screen.
- 2 Specify the login information (for example, username and password), but do not click *OK*, *Next*, or *Finish*.

The login panel needs to remain so that SecureLogin can capture the information on the panel.

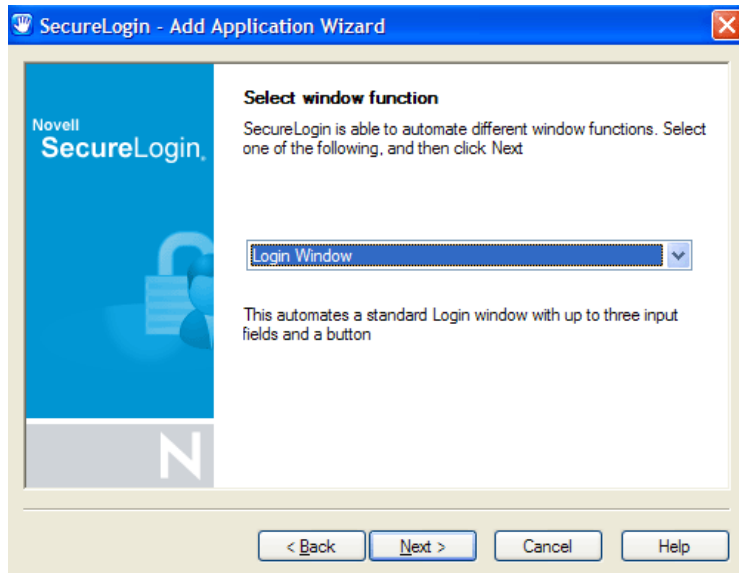
- 3 Right-click the SecureLogin icon on the task bar, then click *Add Applications*.
- 4 Click *Next > Windows Application > Next*.



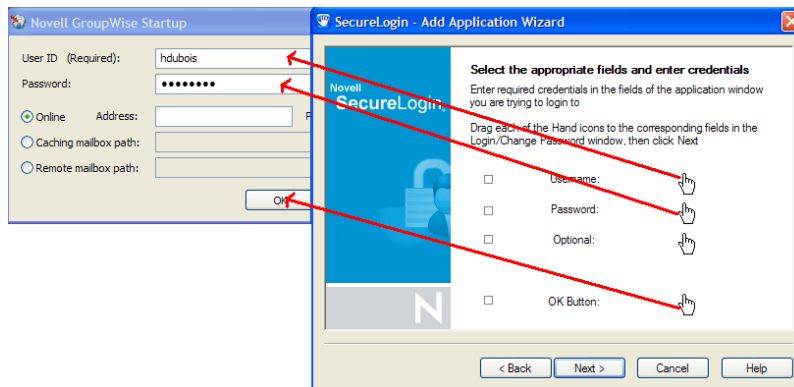
- 5 Drag the hand icon from the Single Sign-on Enable a Windows Application login dialog box to the title bar of the login window.



- 6 In the Select Window Function window, select *Login Window* from the drop-down list, then click *Next*.



- 7 Select the login fields.

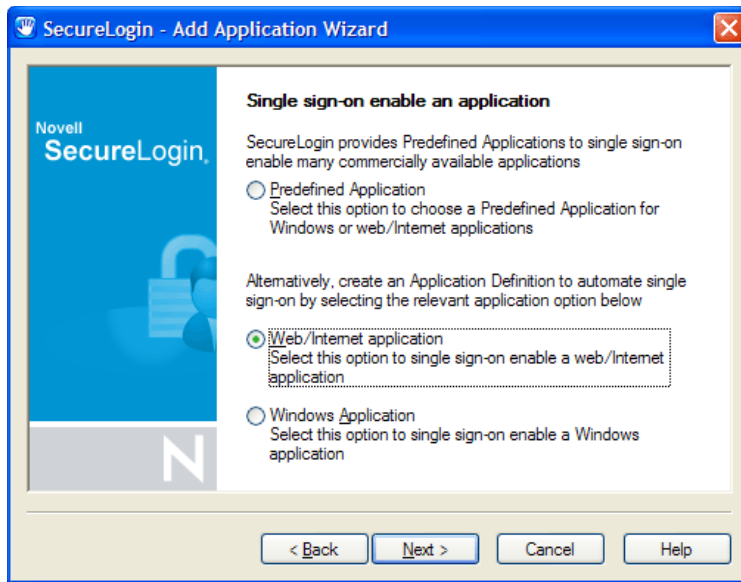


- 7a Drag the hand icons and drop them onto the corresponding Username, Password, and (if appropriate) Other fields in the login window.
 - 7b Drag the hand icon for the *OK* button and drop it onto the *OK*, *Next*, *Continue*, or similar button.
 - 7c Click *Next*.
- 8 In the Name the Application Definition dialog box, specify a name for the application definition. Click *Finish*.

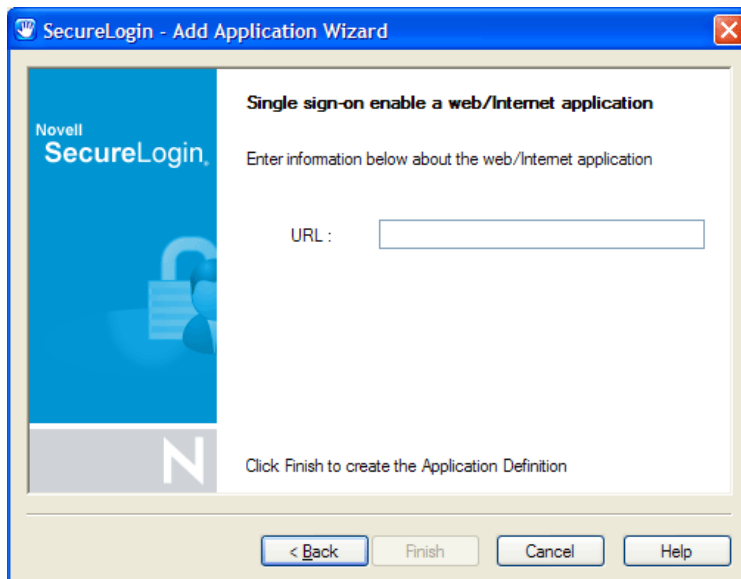
3.2.3 Enabling a Web Application

- 1 Right-click the SecureLogin icon on the task bar, then click *Add Applications*.

2 Click *Next > Web/Internet Application > Next*.



3 In the Single Sign-on Enable Web Page dialog box, specify the URL of the Web page your username and password, then click *Finish*.



4 The Web page will be launched. Enter your username and password, then click *OK*.

5 Click *Yes* at the Web Login Detected dialog box.

SecureLogin extracts the login information from the Web page and stores it for future single sign-on authentication.

3.2.4 Enabling a Java Application

If Java applications are coded in AWT or SWING, SecureLogin can enable those applications for single sign-on.

An application definition requires control numbers (hidden numbers that differentiate a Username edit box from a Password edit box). Determining the correct control numbers in a Java application might require trial and error. Therefore, we recommend that the network administrator configure Java applications centrally, test the applications, and then distribute them.

This section contains the following information:

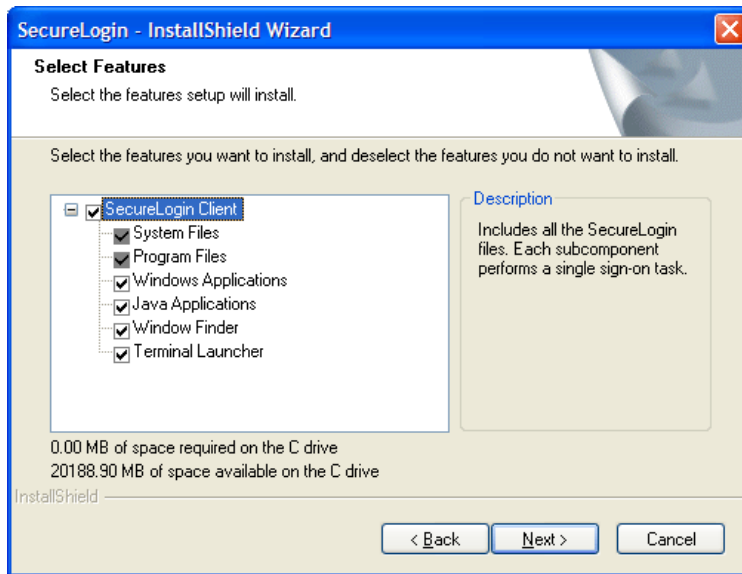
- ◆ “Prerequisites” on page 20
- ◆ “Enabling the Add Applications Wizard for Java” on page 21
- ◆ “Adding the Java Application to the List of Applications” on page 21

Prerequisites

- ◆ Sun* Microsystems Java Runtime Environment (JRE) 1.4.2 or later is installed on the workstation.

The Microsoft* Java Virtual Machine is not supported.

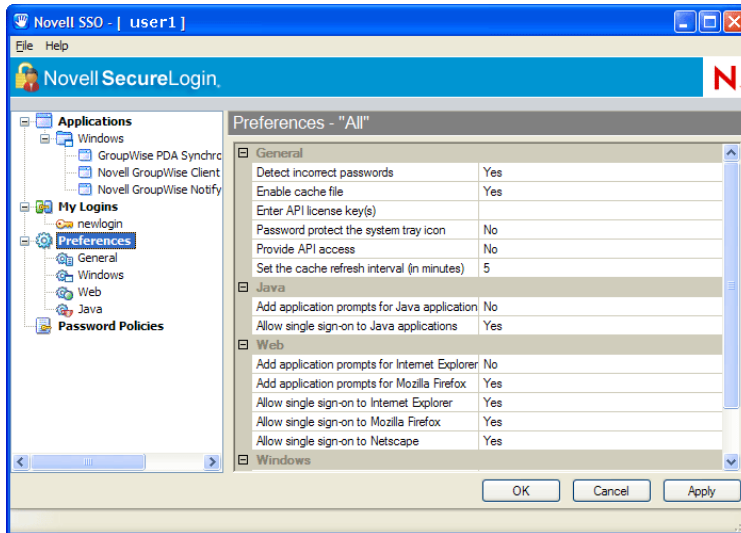
- ◆ Following installation of the JRE, SecureLogin 6.0 SP1 is installed on the workstation.
- ◆ During the SecureLogin installation, you selected the Java Applications component.



Enabling the Add Applications Wizard for Java

When the JRE is installed, the SecureLogin installation program installs Java support by default. However, when SecureLogin first launches, the Add Application Wizard for Java is disabled. To use Java applications, you must enable the Add Applications Wizard for Java.

- 1 Right-click the SecureLogin icon on the task bar, select Manage Logins, then click *Preferences*.

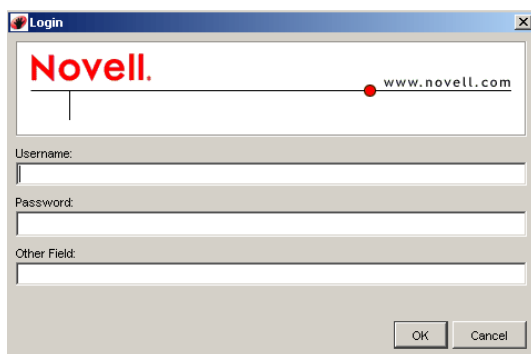


- 2 Set the value of *Add Application Prompts for Java Applications* to *Yes*.
- 3 Set the value of *Allow Single Sign-on to Java Applications* to *Yes*.
- 4 Click *Apply*.

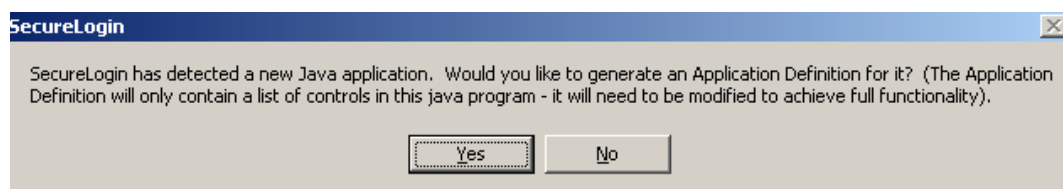
Adding the Java Application to the List of Applications

- 1 Launch the Java application.

The Java application can be an applet or an executable file. The application displays a login dialog box.



SecureLogin displays the following message:



- 2** Click *Yes*.
SecureLogin extracts and stores the Java control information for login to the application or server.
- 3** Double-click the SecureLogin icon on the task bar, then select *Applications*.
SecureLogin displays a new icon (Java) and application type.
- 4** Double-click the Java application, then click *Definition*.
- 5** Modify the application definition by typing the commands and control numbers that enable SecureLogin to automatically log you in to the application.
Determining the control numbers might require trial and error.
- 6** Save the single-sign-on information by clicking *Apply*.
- 7** Test the Java application by launching it and logging in.

Login IDs

4

You use applications to do your work. If an application is password-protected, you must log in to it. To use Novell® SecureLogin to automatically log you in to an application, you create a Login ID (set of credentials) and link it to that application.

If you added an application that has a predefined application, you need to link the login ID to it. You can provide login variables the next time that you access the application.

However, you do not need to add or create login IDs for applications that you enabled for single sign-on in the following ways:

- ◆ If you encountered a new application through a pop-up prompt and then used the Add Applications Wizard to enable the application.
- ◆ If you ran the Add Applications Wizard and selected a Web Page or Windows* Application option as the script type.

In these two cases, the Add Application Wizard of SecureLogin created the login ID while you were adding the application to the single sign-on functionality.

You can use the same login ID to log you in to more than one application.

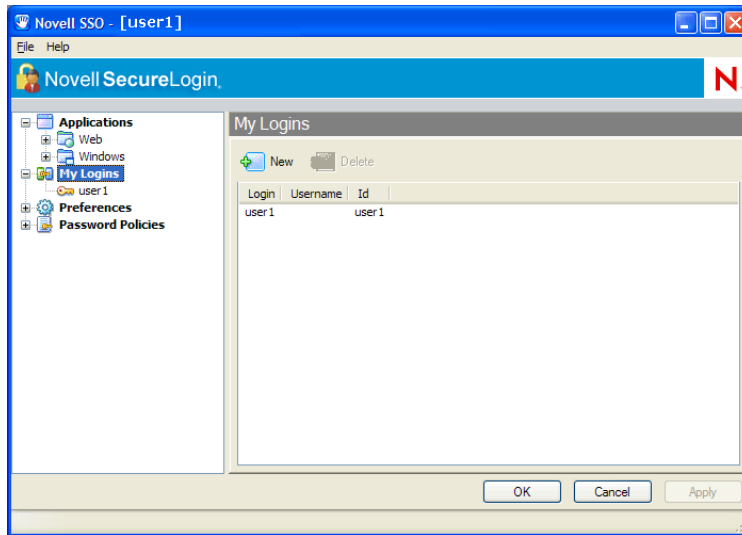
Also, if you have multiple roles, you can set up multiple IDs for the same application. For example, you might be a network administrator as well as a user. When you log in to the network as administrator and then launch an application, SecureLogin asks you to select a profile. After you select the administrator profile, SecureLogin then automatically logs you in with the appropriate credentials.

4.1 Creating a Login ID

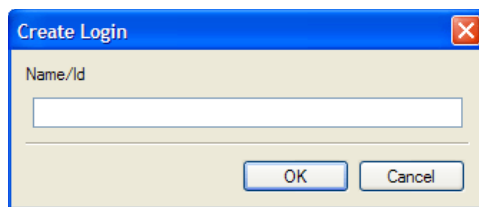
You might want to create an additional Login ID (set of login credentials) for one or more applications.

- 1 Right-click the SecureLogin icon on the task bar, then click *Manage Logins*.

2 Click *My Logins* > *New*.



3 Specify a Name or ID in the create login dialog box, then click *OK*.



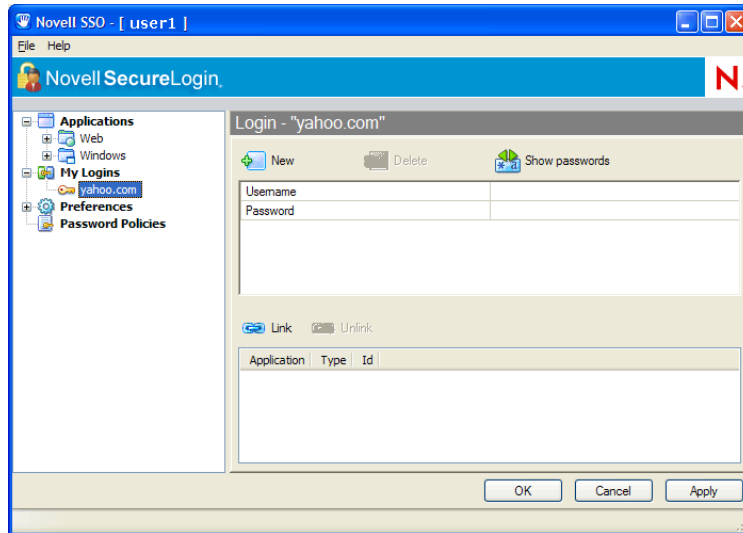
Typically, enter the application name.

If you have already saved values, you can edit them. For example, to change a password, click the *Password* variable, click *Edit*, then type and confirm the new password.

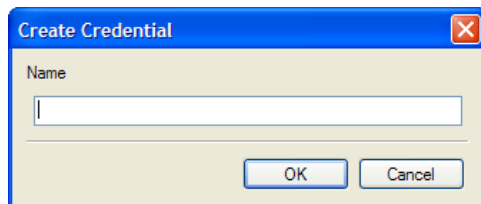
4.1.1 Entering Credentials

To enter user credentials:

- 1 Double-click the login ID.



- 2 In the *Username* field, add a user name.
- 3 In the *Password* field, add the password.
- 4 To add a new credential, click *New*.



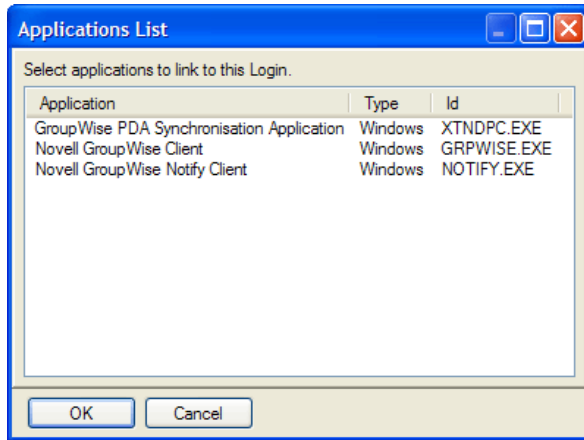
- 5 Specify a name for the credential, then click *OK*.

4.1.2 Linking a Login to an Application

To link the login ID to an application:

- 1 Click *Link*. The Application List dialog box is displayed.

2 Select the application that you want to link the login to, then click *OK*.



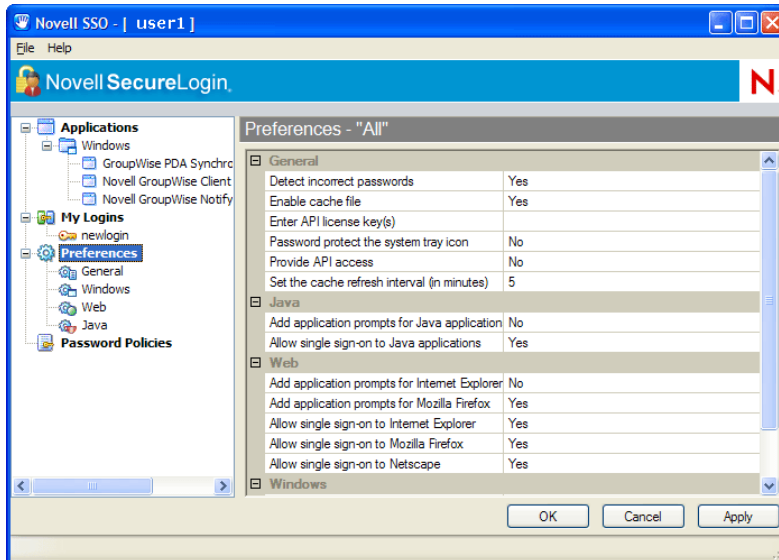
3 Click *Apply*.

For additional information on login IDs, applications, and password policies, click the *Help* button that displays in SecureLogin on your workstation.

Changing Preferences

5

The following figure illustrates Novell® SecureLogin Preferences:



The list of preferences is a subset of preferences that the network administrator controls through management utilities (iManager, Microsoft* Management Console, or SecureLogin Manager). If an administrator has disabled a setting, you cannot use it or change it on your workstation.

For information on the Preferences, click *Help*.

5.1 Disabling the Workstation's Cache

You can store login data in encrypted files on your workstation, and use it when you work offline (for example, on a disconnected laptop).

If you forget the passphrase answer password and cannot log in by using your directory password, you need to delete and re-create the cache files. If you are authenticated to the network, SecureLogin automatically re-creates cache files.

You might need to delete the local cache if you are locked out of both the directory and the local cache. This would happen if an administrator reset your password and then you cannot remember the passphrase answer. The administrator would then go to the User object in iManager and clear user data. You would then need to delete the local cache files and add login information again.

To disable the cache:

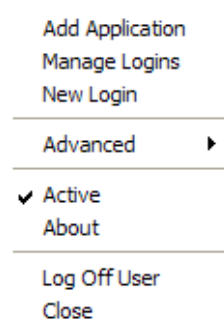
- 1 Double-click the SecureLogin icon on the task bar.
- 2 Click *Preferences > Enable Cache File*.
- 3 Set the value to *No*, then click *OK*.

5.2 Clearing the Cache

A cache is a database stored on your workstation. Because the information in the cache is encrypted, no one can view it. You might want to clear the cache if SecureLogin behaves strangely (for example, loss of sync with passwords, or has multiple credential sets where only one should exist). To clear the entries in the local cache, click *Clear Cache*. The cache file is updated at the next refresh.

5.3 Temporarily Disabling SecureLogin

You can use the *Active* setting to temporarily disable SecureLogin.



Scenario: Writing a New Application Definition. You have started writing an application definition for an application. Because you need to inspect some control IDs with Window Finder, you do not want the application definition to run at this time. You disable the *Active* setting. SecureLogin does not run while you fine-tune the application definition. After troubleshooting, you click *Active*. SecureLogin is functional again.

Scenario: Troubleshooting an Existing Application Definition. You have application definition already written for an application. You open the application to get more information from it, so that you can put the information in your application definition. Because the *Active* setting is used, the application definition for the application runs.

You do not want to wait for the application definition to run while you look for control IDs. Therefore, you close the application, click *Active* to disable SecureLogin, then open the application. You then get the information that you need, return to your application definition, enter the information into the application definition, toggle to *Enable*, then run the application definition.

The *Active* setting can also be useful for the help desk to use in troubleshooting, so that a technician can manually step through a login.

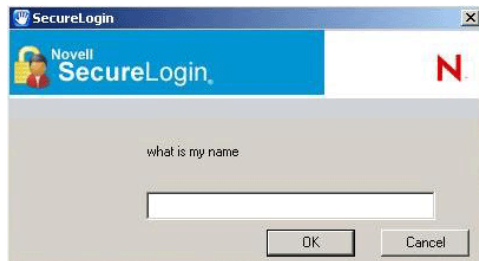
To toggle the *Active* setting:

- 1 Right-click the SecureLogin icon on the task bar.
- 2 Click *Active*.

5.4 Changing Your Passphrase

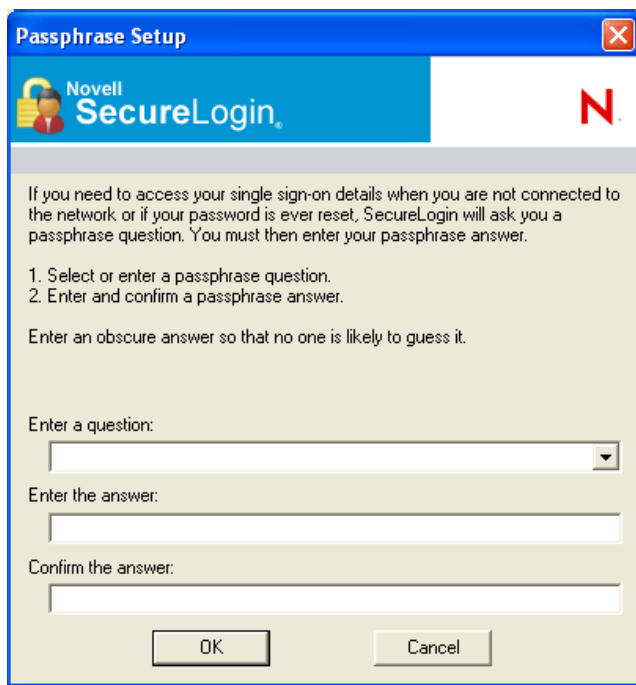
If the network administrator allows you to and if the SecureLogin icon displays on your task bar, you can change a passphrase question and answer:

- 1 Right-click the SecureLogin icon on the task bar.
- 2 Click *Advanced > Change Passphrase*.



- 3 Specify your existing passphrase answer.
- 4 Specify the passphrase question, passphrase answer, or both, then click *OK*.

The following figure illustrates the change-passphrase dialog box.



If the system administrator requires you to respond to a pre-set passphrase question, you can select a question from the drop-down list.

If the system administrator allows you to enter your own question, you can specify a new one or re-use or edit the same one. Then provide and confirm a passphrase answer.

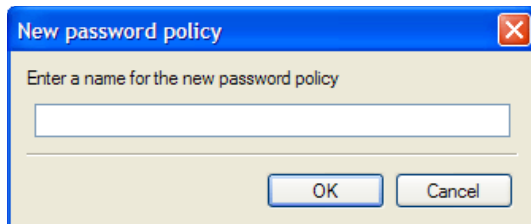
Password Policies

6

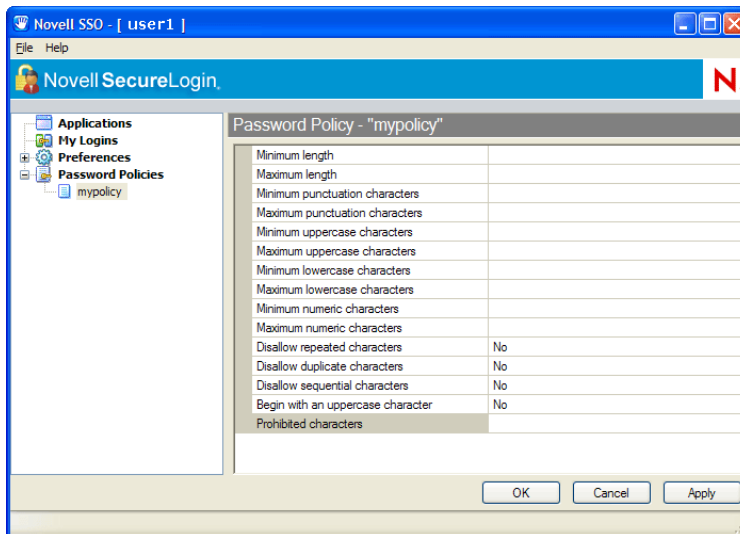
Organizations and applications often have rules about the content of passwords, such as the required number of characters and type of characters. The Password Policies option in SecureLogin provides functionality to create and enforce these password rules via a Password Policy, and apply this Policy to one or more application logins.

6.1 Creating a Password Policy

- 1 Double-click the SecureLogin icon on the system tray, or click *Start > Programs > Novell SecureLogin > Novell SecureLogin*.
- 2 Click *Password Policies > New*. The new password policy dialog box opens.



- 3 Name the policy, then click *OK*.
- 4 Double-click the newly added policy.



- 5 You can view or change the following settings:
 - ♦ **Minimum length:** Set the minimum length for the password.
 - ♦ **Maximum length:** Set the maximum length for the password.
 - ♦ **Minimum punctuation characters:** Set the minimum number of punctuation characters that can be used in the password.

- ♦ **Maximum punctuation characters:** Set the maximum number of punctuation characters that can be used in the password.
- ♦ **Minimum punctuation characters:** Set the minimum number of uppercase characters that can be used in the password.
- ♦ **Maximum uppercase characters:** Set the maximum number of uppercase characters that can be used in the password.
- ♦ **Minimum lowercase characters:** Set the minimum number of lowercase characters that can be used in the password.
- ♦ **Maximum lowercase characters:** Set the maximum number of lowercase characters that can be used in the password.
- ♦ **Minimum numeric characters:** Set the minimum number of numeric characters that can be used in the password.
- ♦ **Maximum numeric characters:** Set the maximum number of numeric characters that can be used in the password.
- ♦ **Disallow repeated characters:** Specify if you want to use repeated characters such as “aa” in the password. Set the value to Yes; No; or Yes, case sensitive.
- ♦ **Disallow duplicate characters:** Specify if you want to use a character that has appeared once in the password to appear again. Set the value to Yes; No; or Yes, case sensitive.
- ♦ **Disallow sequential characters:** Specify if you want to use sequential characters such as “abcd” or “1234” in the password. Set the value to Yes; No; or Yes, case sensitive.
- ♦ **Begin with an uppercase character:** Specify if you want to begin a password with an uppercase character. You can set the value to Yes or No.
- ♦ **Prohibited character:** Specify characters that should not appear in the password.

6 Click *Apply*.

6.2 Viewing or Editing a Password Policy

- 1 Double-click the Novell SecureLogin icon on the system tray, or click *Start > Programs > Novell SecureLogin > Novell SecureLogin*.
- 2 Click *Password Policies*.
- 3 Double-click a policy to view password policy settings.
- 4 Edit settings as required.
- 5 Click *Apply*.

6.3 Deleting a Password Policy

- 1 Double-click the Novell SecureLogin icon on the system tray, or click *Start > Programs > Novell SecureLogin > Novell SecureLogin*.
- 2 Click *Password Policies*.
- 3 Select the password policy that you want to delete, then click *Delete*.