

Novell iPrint Appliance 1.1 Quick Start

March 2015



This guide is intended for users who want to evaluate Novell iPrint. It provides the basic instructions to set up the Novell iPrint Appliance and print your first job. This guide uses VMware vSphere as an example virtualization platform to deploy the Novell iPrint Appliance. However, the Novell iPrint Appliance can also be deployed on virtualization software that can run the .ovf, .vhd, or .xen file formats (such as Windows Hyper-V, Citrix XenServer, VMware ESX, or VMware Workstation).

Refer to the [Novell iPrint Appliance 1.1 Administration Guide](#) for additional information.

You can download an evaluation version of the Novell iPrint Appliance from the [Novell Downloads page](https://download.novell.com/Download?buildid=MPaEAM3RuUE~) (<https://download.novell.com/Download?buildid=MPaEAM3RuUE~>).

- ◆ [Section 1, "iPrint Overview," on page 1](#)
- ◆ [Section 2, "Deploying the Novell iPrint Appliance," on page 2](#)
- ◆ [Section 3, "Configuring the Novell iPrint Appliance," on page 6](#)
- ◆ [Section 4, "Installing the iPrint Client," on page 14](#)
- ◆ [Section 6, "Enabling Novell iPrint for Mobile Printing," on page 15](#)
- ◆ [Section 7, "Enabling Novell iPrint for Email Printing," on page 16](#)
- ◆ [Section 8, "Legal Notices," on page 17](#)

1 iPrint Overview

Novell iPrint provides secure enterprise print services for your desktops, laptops, and mobile devices. Novell iPrint solution integrates with any of your existing corporate printers, irrespective of the vendor of the printer or the brand, allowing you to deliver self-service printer provisioning to your device users. Some of the prominent features of Novell iPrint include:

Simplified enterprise printing: Novell iPrint connects all of your organization's workstations and mobile devices to your current printers.

Self-service printing: You can print from your desktops, laptops, or mobile devices without waiting for the helpdesk to set up a printer.

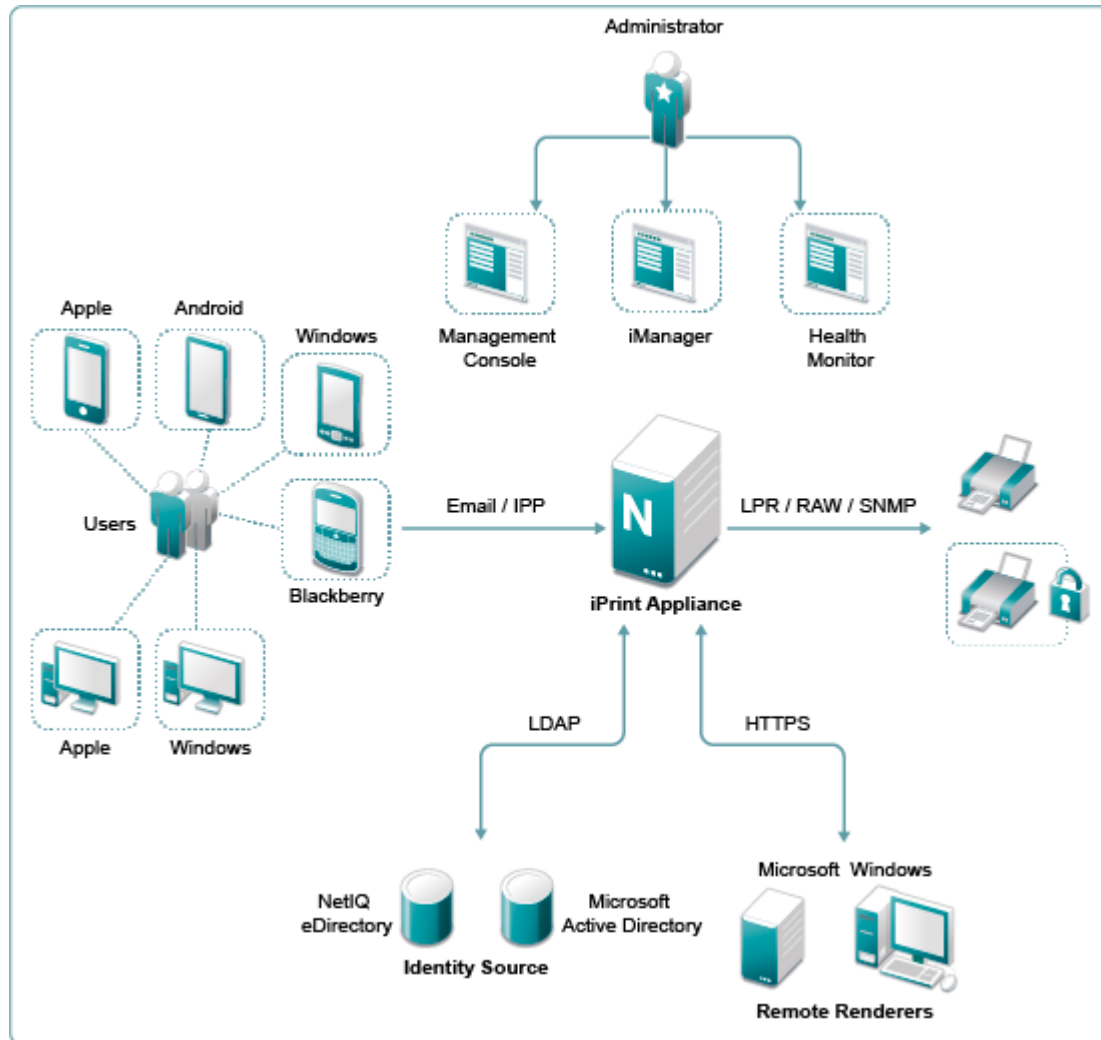
Mobile device printing: If you are using iOS, Android, Windows, or BlackBerry mobile devices, you can download the Novell iPrint app, which allows you to print from your mobile devices directly to any of your organization's printers.

Printing by scanning the QR Code: Scan a QR code to quickly connect your mobile device to a specific printer.

Printing through email: Any email-enabled device can print to any iPrint printer by sending the print job in the body of the email or as an attachment.

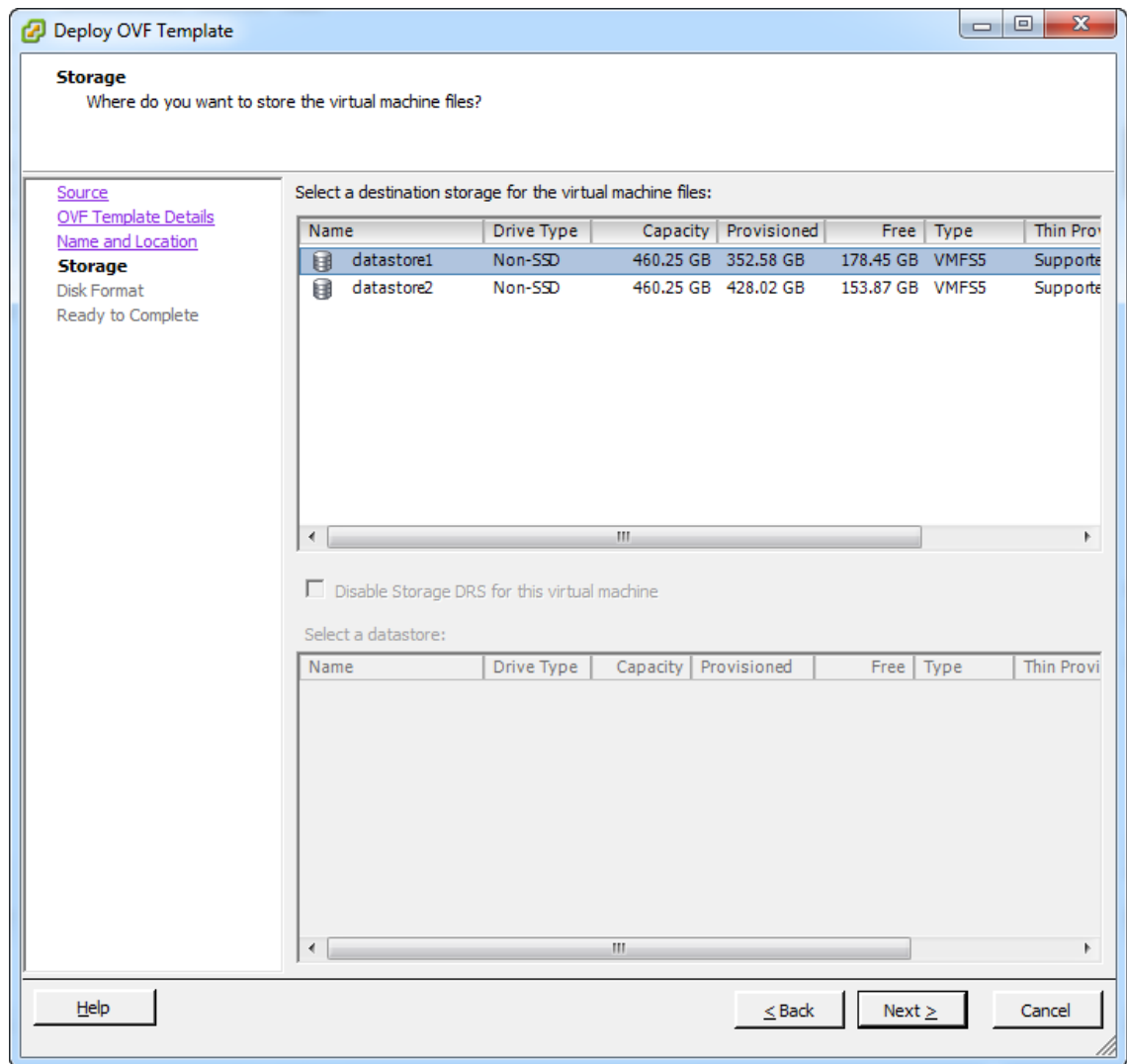
Leveraging your current directory service: Novell iPrint makes secure printing easy by integrating its data store with your identity directory. It works with lightweight directory access protocol (LDAP) directories such as Active Directory and NetIQ eDirectory.

The Novell iPrint components are illustrated in the figure below:

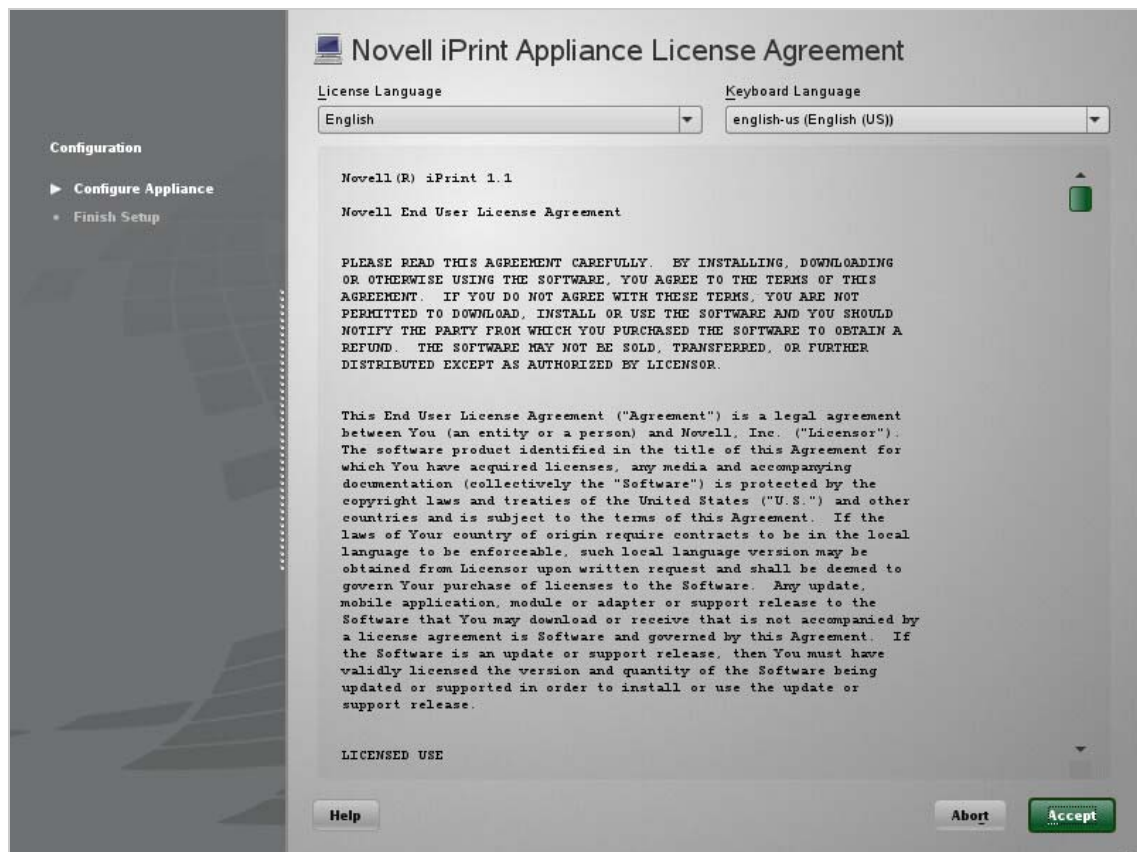


2 Deploying the Novell iPrint Appliance

- 1 Download and extract the iPrint Appliance software.
You can download an evaluation version of the Novell iPrint Appliance from the [Novell Downloads page](https://download.novell.com/Download?buildid=MPaEAM3RuUE~) (<https://download.novell.com/Download?buildid=MPaEAM3RuUE~>).
- 2 In your vSphere Client, click *File > Deploy OVF Template*.
- 3 Follow the on-screen instructions.
- 4 On the *Storage* page, select a storage repository where the disk images for the imported VM will be placed, then click *Next*.

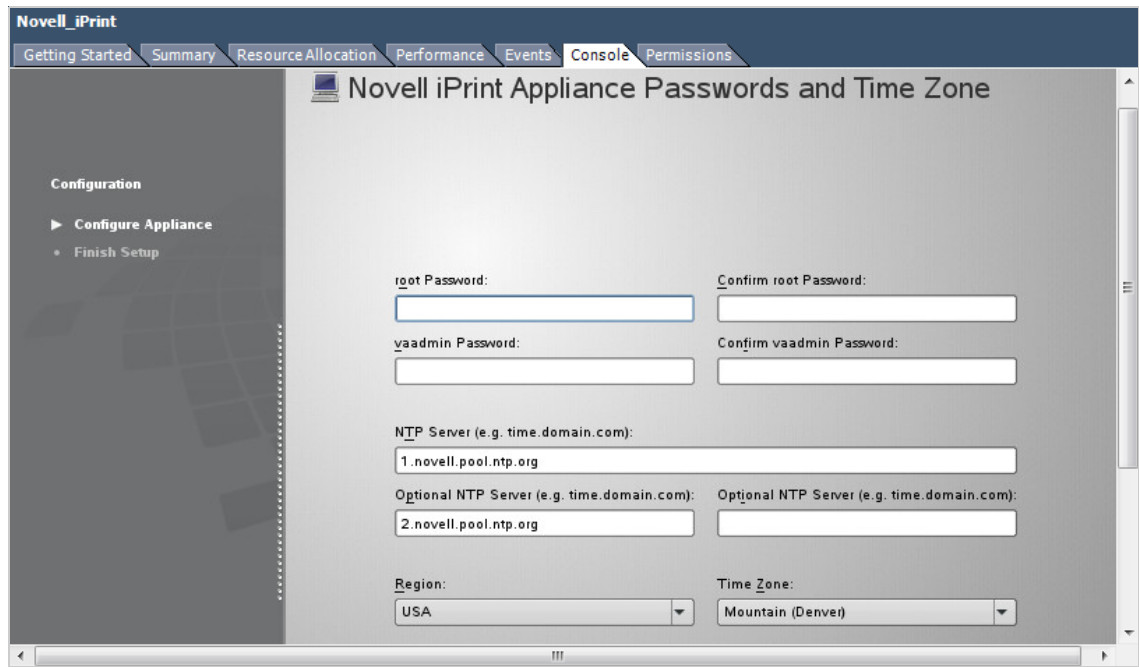


- 5 On the *Disk Format* page, retain all default settings, then click *Next*.
- 6 Click *Finish* to successfully deploy the iPrint Appliance.
- 7 Power on the virtual machine.
 - 7a Right-click the newly created virtual machine, then select *Power > Power On*.
The powering on process takes some time because the Novell iPrint is deployed only after powering on the virtual machine. You can navigate to the *Console* tab in your virtual machine to monitor the deployment process.
- 8 When the VM is powered on, navigate to the *Console* tab and accept the license agreement.



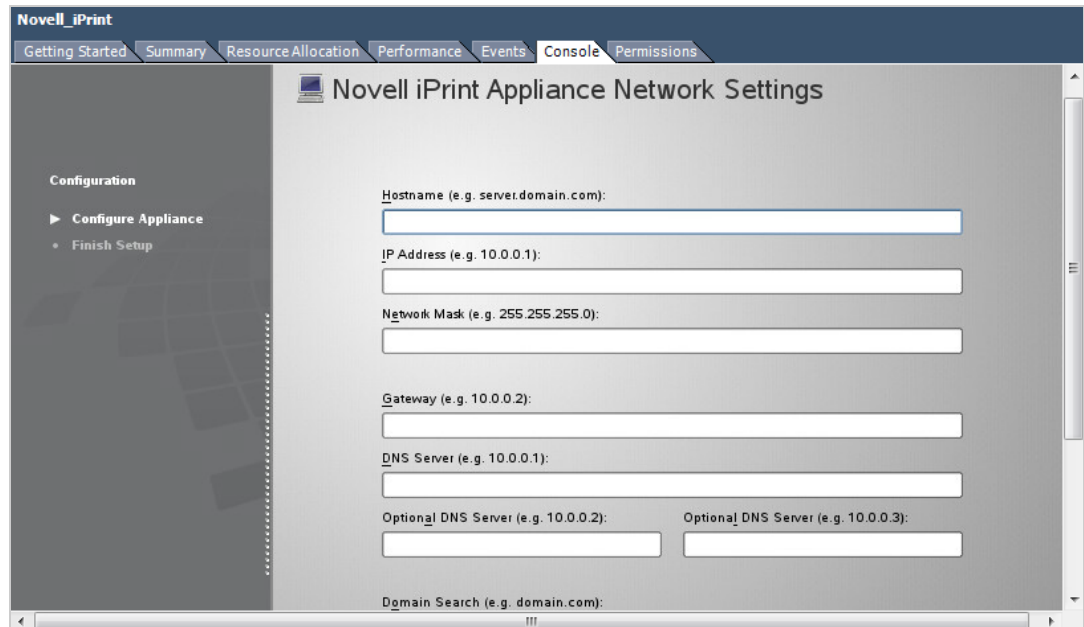
Once you accept the license agreement, the Novell iPrint Appliance Passwords and Time Zone page is displayed.

- 9 Specify all the required details, such as *Root Password*, *vaadmin password*, *NTP Server* details, *Region*, and its corresponding *Time Zone*.



9a Click *Next*.

The Novell iPrint Appliance Network Settings page is displayed.

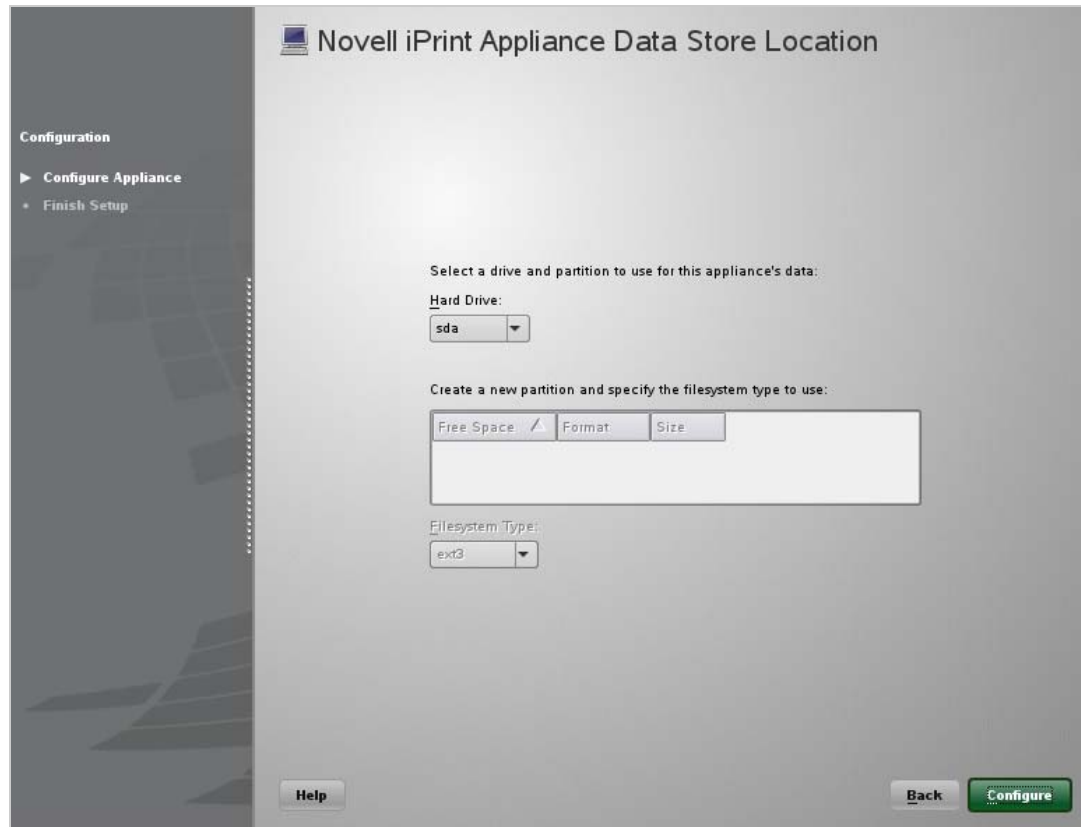


9b Specify all the required details, such as *host name*, *IP address*, *network mask*, *gateway* details, and *DNS server* details.

Host name is a fully qualified DNS host name associated with the IP address of the iPrint appliance. You must register the host name in the DNS server before proceeding to the next step. After you have registered the host name in the DNS server, open the command prompt on Windows or a terminal session on Linux on the same network where the iPrint Appliance is located, and type `nslookup <ipaddress>` to get the host name. For example, `nslookup 192.168.1.255`.

9c Click *Next*.

The Novell iPrint Appliance Data Store Location page is displayed.



9d Click *Configure*.

Because you have not added a secondary disk to the iPrint Appliance, the YaST2 warning page is displayed. You can ignore this message and click *Continue*.

Upon successful installation, a message stating, "The system is ready for appliance configuration" is displayed. After the installation is complete, a URL and an IP address to access the iPrint Appliance Management Console is displayed. Using a web browser, you can navigate to the iPrint Appliance Management Console URL.

3 Configuring the Novell iPrint Appliance

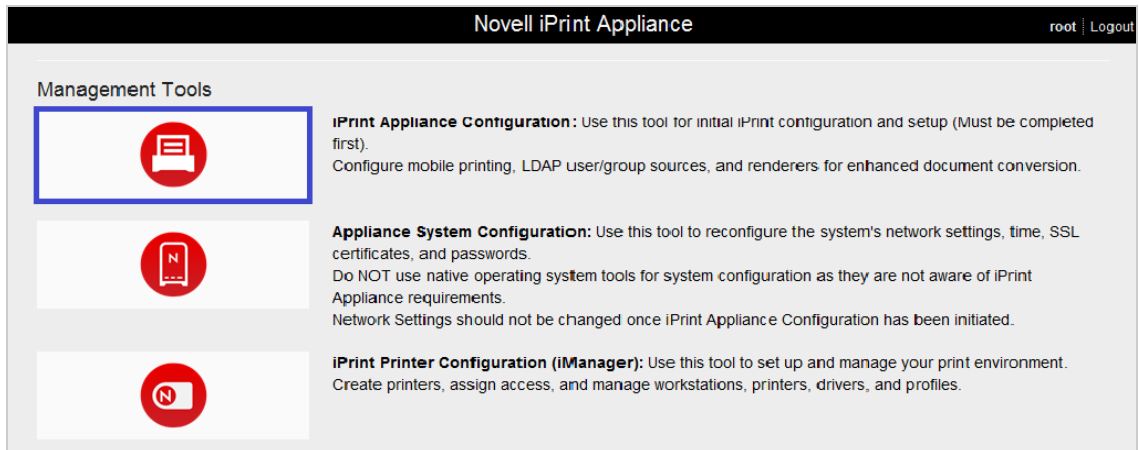
You can configure the Novell iPrint Appliance through the iPrint Appliance Management Console.

- ♦ [Section 3.1, "Initial Configuration Using the Management Console," on page 6](#)
- ♦ [Section 3.2, "Configuring Printers Using Novell iManager," on page 8](#)

3.1 Initial Configuration Using the Management Console

- 1 On a web browser, use either the DNS name or the IP address to access the iPrint Appliance Management Console. For example, <https://10.0.0.1:9443> or <http://iprint.example.com/admin>. Ignore the security certificate warning, and continue to the iPrint Appliance Management Console.

- Specify the same *vaadmin* password that you provided in [Step 9 on page 4](#), then click *Log in*. The iPrint Appliance Management Console is displayed.



- Click the *iPrint Appliance Configuration* icon.
- Select *New*, then click *Next*.
The iPrint Initial Configuration Wizard is displayed.

iPrint Initial Configuration Wizard

General

Authentication Realm:

DNS for Print Manager:

Embedded Data Store

Administrator Username:

Administrator Password:

Re-type Password:

Driver Store

Local
 Remote (applies to all drivers)

DNS Name/Address:

Username:

Password:

5 In the *General* section, specify the following information:

Authentication Realm: Continue with the default value IPRINT.

DNS for Print Manager: Specify the DNS name of the iPrint Appliance. The specified DNS name must resolve to the IP address of the Appliance. You must validate that the DNS address is correct and functional before continuing, because a wrong DNS address can result in errors.

In the *Embedded Data Store* section, specify the following information:

Administrator Username: The administrator user name is pre-populated and is not editable.

Administrator Password: Specify the administrator password and confirm it again. This password is used to log in to iManager.

In the *Driver Store* section, specify the following information:

Local: By default, Local is selected. Continue with the selection.

6 Click *Finish*.

The configuration process might take some time to complete. Upon successful configuration, the Print Manager and Driver Store are created under the *iPrintAppliance* container.

3.2 Configuring Printers Using Novell iManager

Novell iManager is a web-based tool that allows you to set up and manage your print environment. It allows you to create printer objects, upload printer drivers, assign printer drivers to printer objects, and so forth.

Uploading Drivers

On Linux:

- ♦ You can upload the printer drivers using Mozilla Firefox. The standard file format of the driver is a PPD (Postscript Printer Description) file.

On Windows:

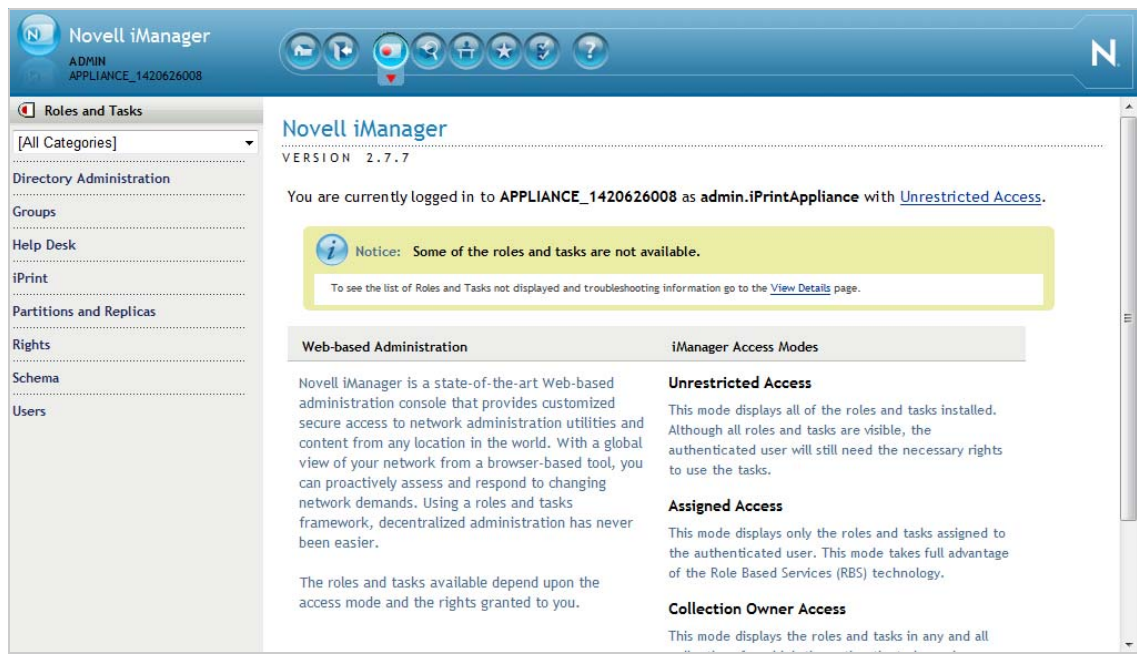
- ♦ You must upload only the printer driver through Microsoft Internet Explorer. Ensure that you are running Microsoft Internet Explorer as an Administrator by right-clicking Microsoft Internet Explorer and selecting the *Run as administrator* option.
- ♦ You can download the printer drivers from the web. While downloading the printer driver, you must either select the *.inf* file provided by the printer manufacturer or select a printer driver that was shipped with your Windows operating system. Depending on what you choose, the printer driver is installed on the Windows workstation during the driver upload process to the Driver Store.

The following procedure is an example of uploading a printer driver on a Windows 7 64-bit workstation.

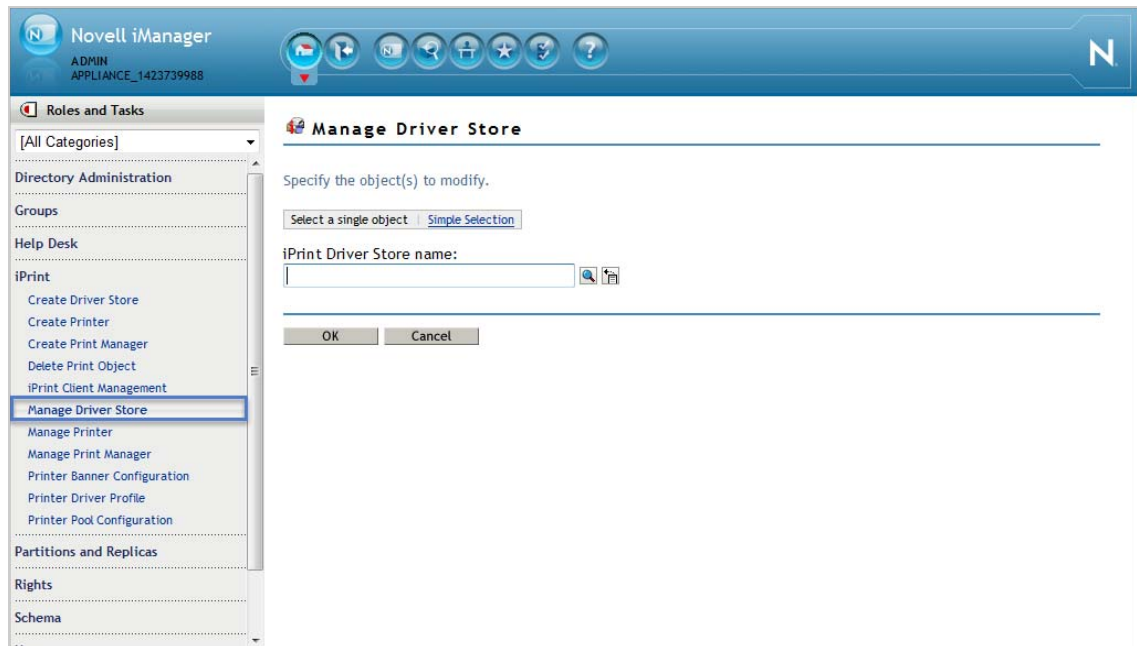
- 1 Click *Home* on the Novell iPrint Appliance web page.
- 2 Click the *iPrint Printer Configuration (iManager)* icon.

Accept the security certificate if prompted, and login by providing the administrator password that you specified in [Step 5 on page 8](#).

The Novell iManager page is displayed.



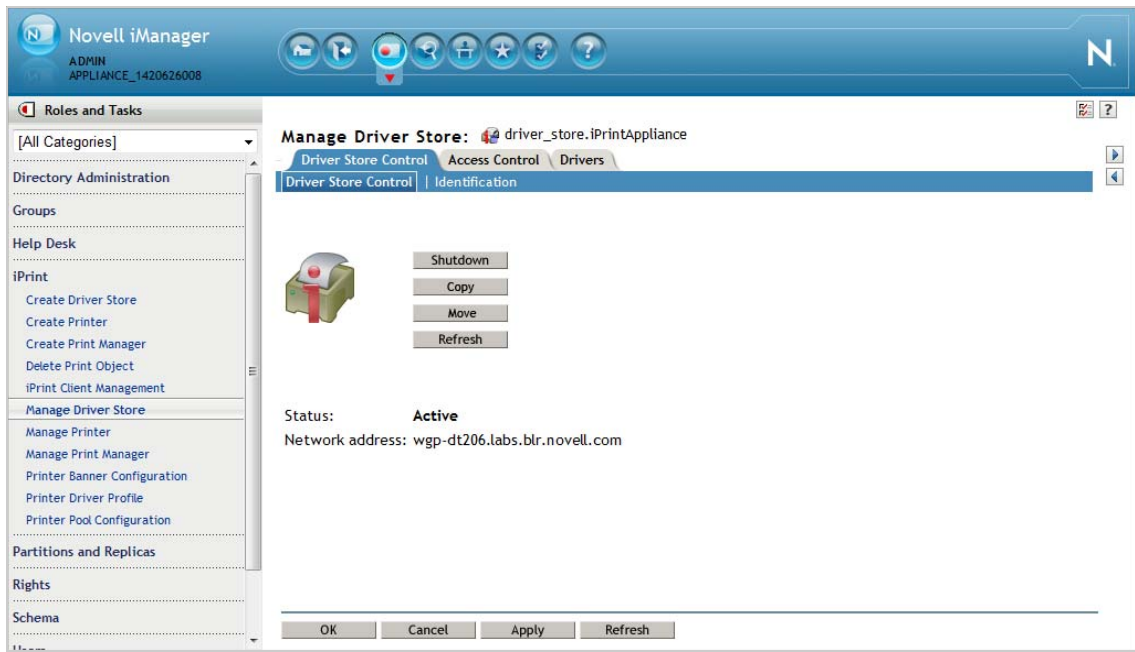
3 Click *iPrint > Manage Driver Store*.



4 On the *Select a single object* tab, click the *Search* icon and select the *iPrint Driver Store* from the displayed list.

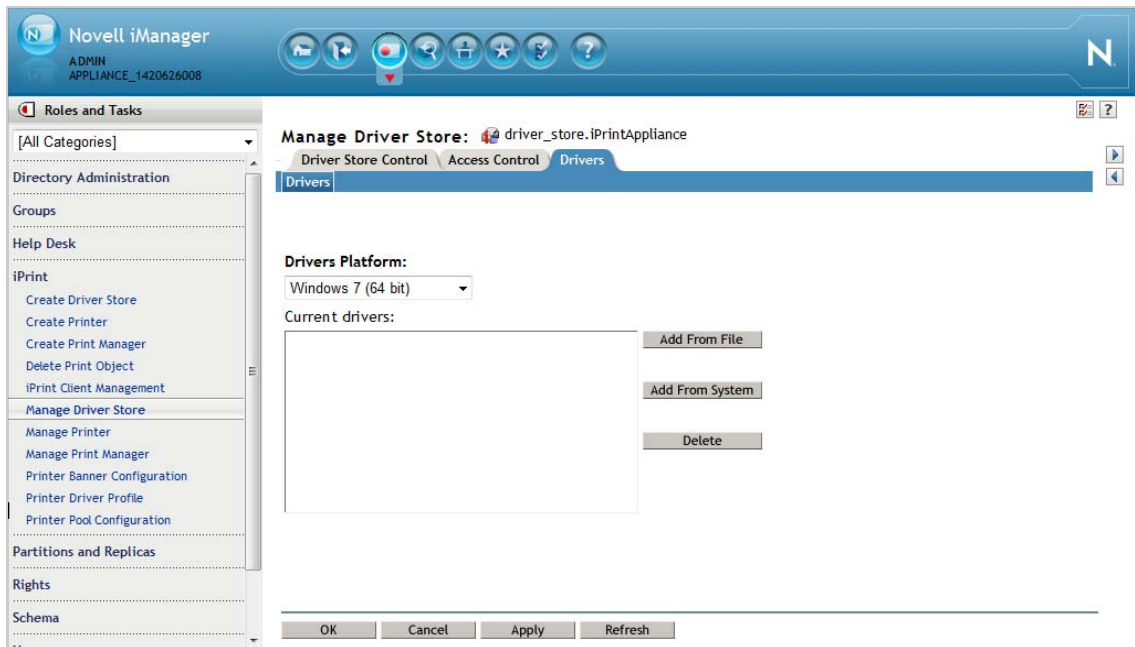
5 Click *OK*.

The *Manage Driver Store* page is displayed.



- 6 Navigate to the *Drivers* tab, and depending on the operating system you are using, select the operating system from the *Drivers Platform* drop-down list.

IMPORTANT: As a prerequisite, you must install the iPrint Client before uploading the driver. For instructions, see [Section 4, “Installing the iPrint Client,”](#) on page 14.



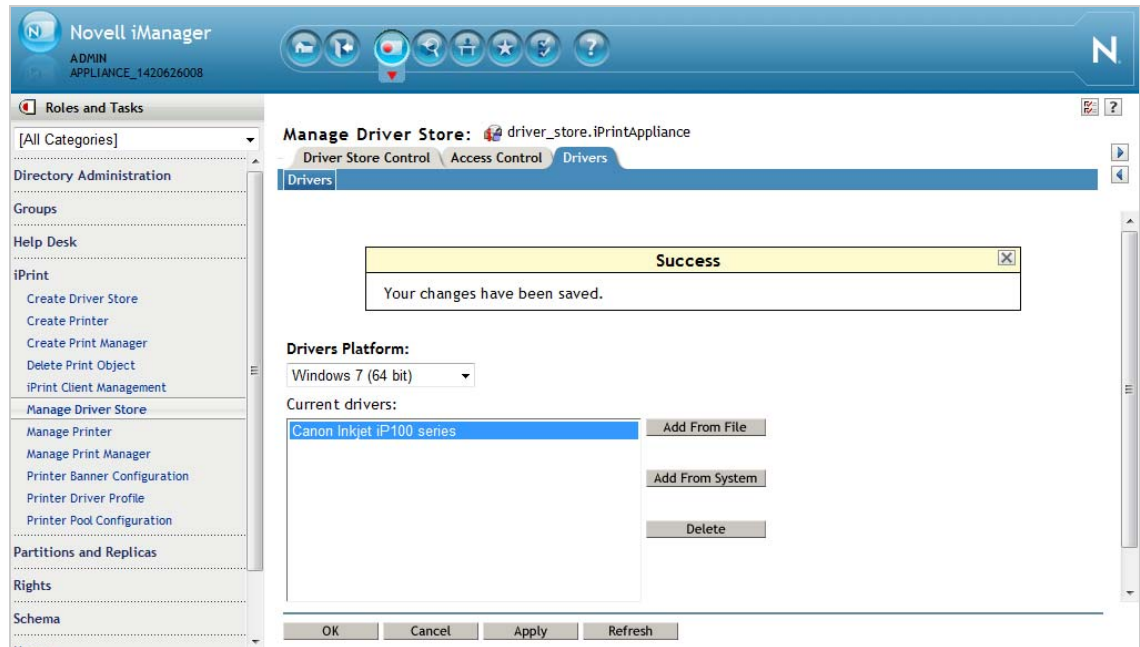
- 7 Click *Add From File*.

The *Add Printer Wizard* dialog box is displayed.

7a From the *Add Printer Wizard* dialog box, select the printer manufacturer and the corresponding printer.

8 Click *OK*.

The selected operating system driver platform and the corresponding printer driver is displayed on your Novell iManager page.

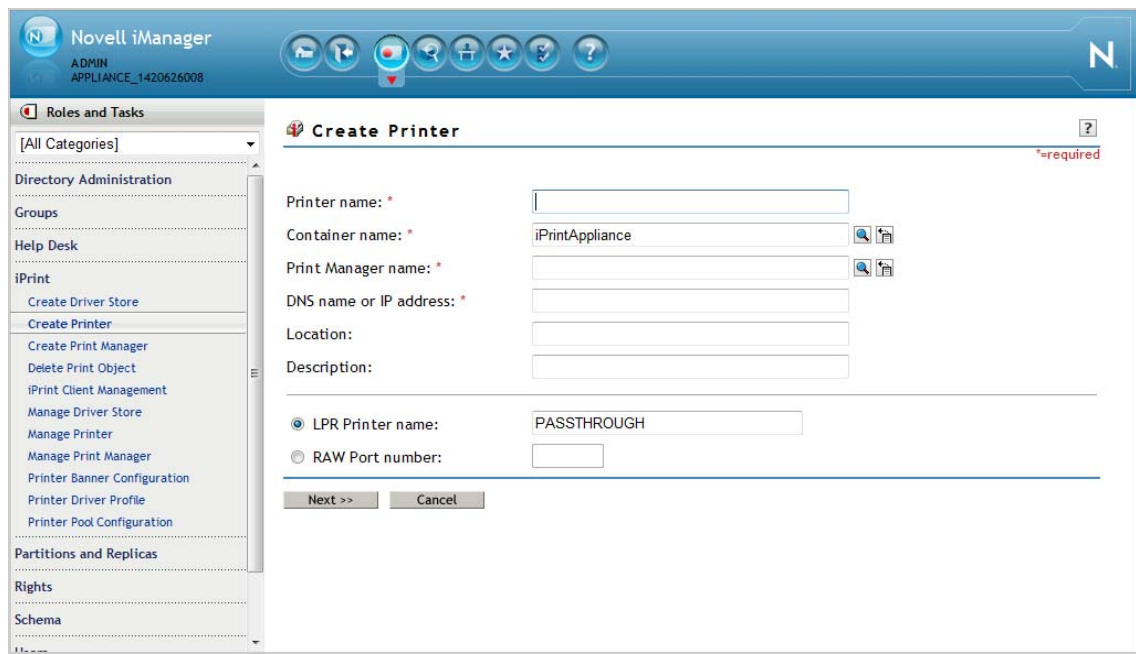


9 Click *Apply* and *OK*.

10 Click *iPrint > Create Printer*.

The *Create Printer* page is displayed.

11 Specify all the required details:



Printer name: Specify the name of the printer. This name will be used to advertise the printer as an iPrint printer.

Container name: Continue with the default value *iPrintAppliance*.

Print Manager name: Click the *Search* icon and select the print manager under the *iPrintAppliance* container.

DNS name or IP address: Specify the host name or IP address of the printer.

Location: Specify the location of the printer.

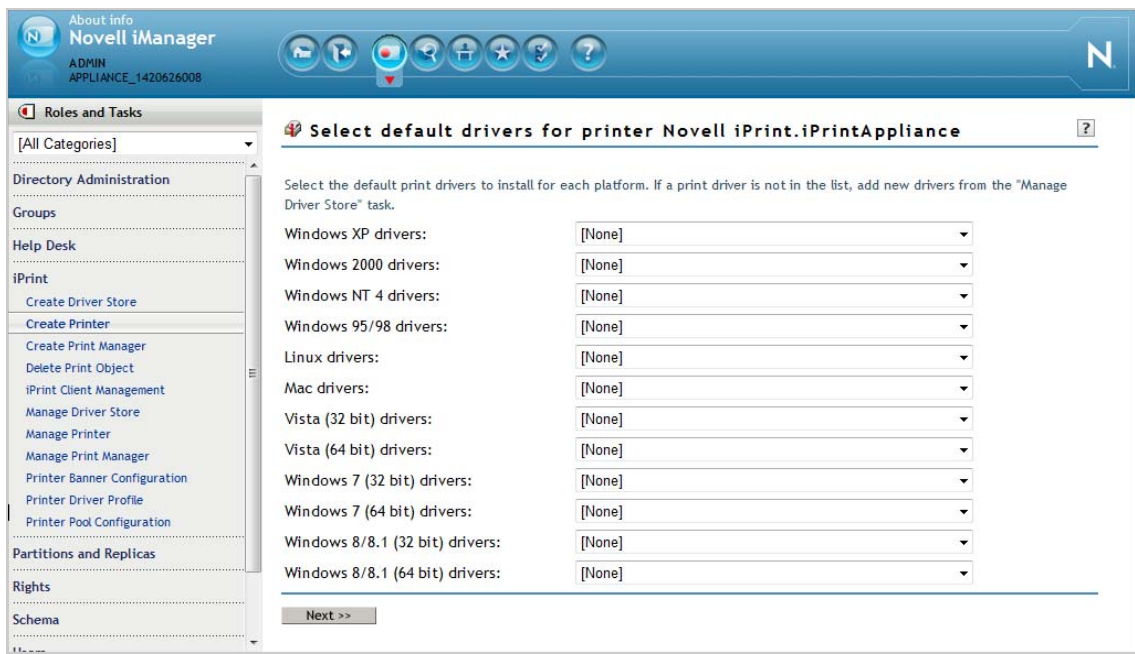
Description: Specify a brief description.

LPR Printer name: Continue with the default value *PASSTHROUGH*.

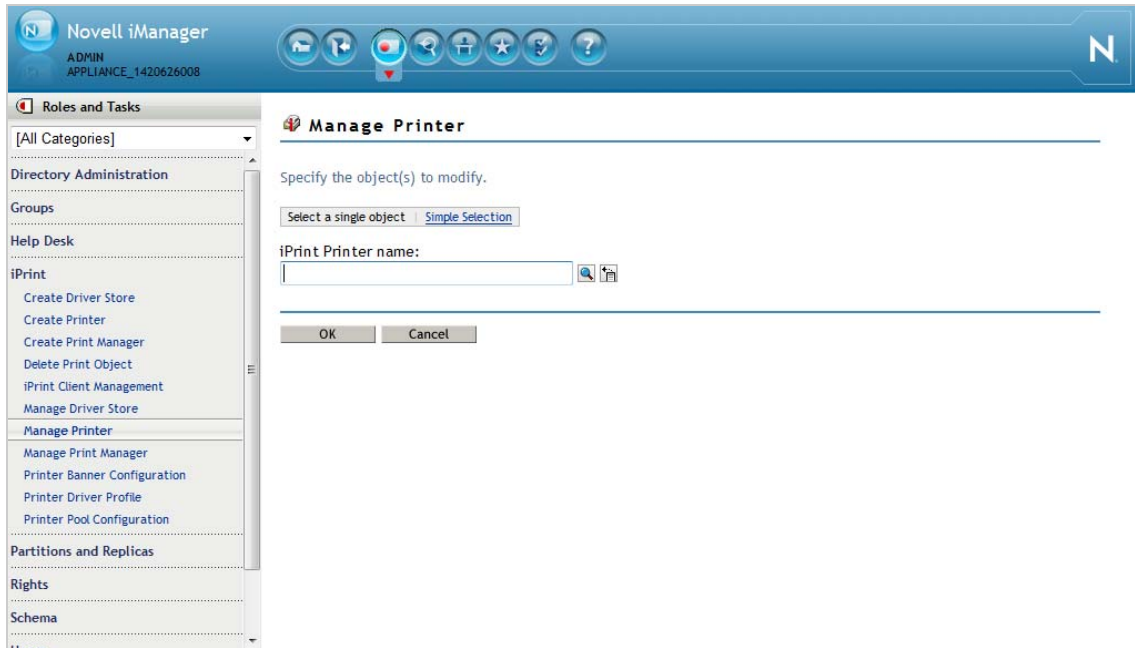
If the RAW protocol is selected, a port number is required. Most printers are configured, by default, to use port 9100 for RAW protocol communications.

- 12 Click *Next* to select the default printer drivers to install for each of your operating systems. If a printer driver is not in the list, click *Next* to proceed to the next step.

If a printer driver is not in the list, depending on the operating system you are using, you should upload the appropriate printer driver.



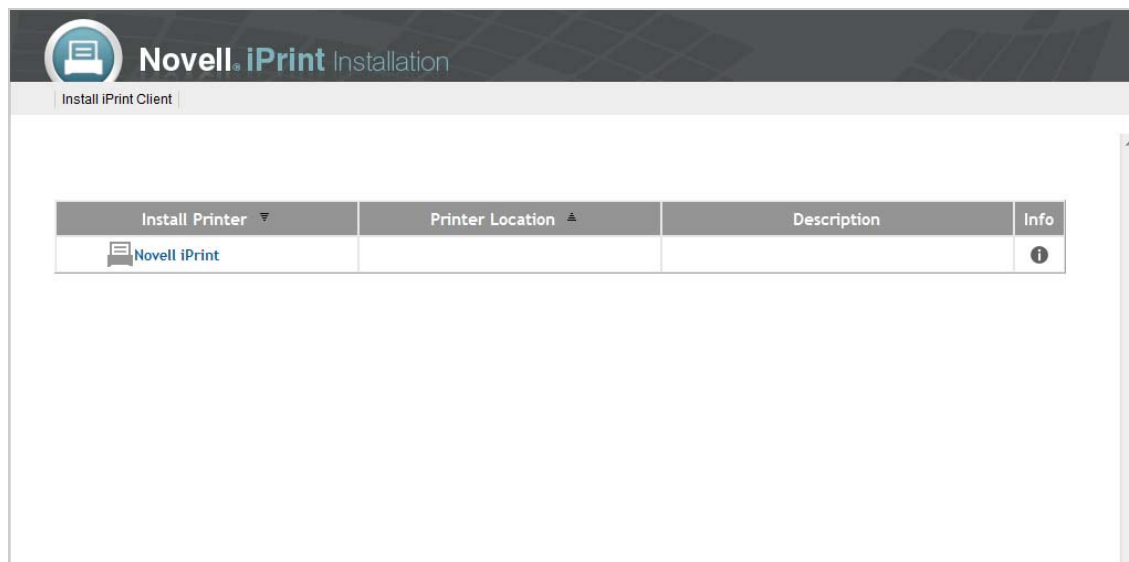
- 13 Click *Next*.
- 14 Click *OK*.
- 15 Click *iPrint > Manage Printer*.



- 16 Click the *Search* icon and select the printer from the displayed list.
- 17 Click *OK*.
- 18 Navigate to the *Drivers* tab and select the applicable operating system from the list.
Depending on the operating system you selected, the corresponding printer driver is selected and displayed under the *Available Drivers* menu.
- 19 Select the printer driver from the *Available Drivers* menu, then click *OK*.

4 Installing the iPrint Client

- 1 On a web browser, use either the DNS name or the IP address to access the IPP Page. For example, <https://192.168.1.255/ipp>.



- 2 Click *Install iPrint Client* to download and install the iPrint Client.

After you install the iPrint Client, you must restart your browser.

5 Installing the Printer

- 1 On a web browser, use either the DNS name or the IP address to access the IPP Page. For example, <https://192.168.1.255/ipp>.

All the available printers are listed.

- 2 Click and select the printer that you want to install.
- 3 The Novell iPrint dialog box is displayed.
- 4 Follow the on-screen instructions to install the printer.

Upon successful installation, you might want to print a test page to ensure that the iPrint Appliance is working properly.

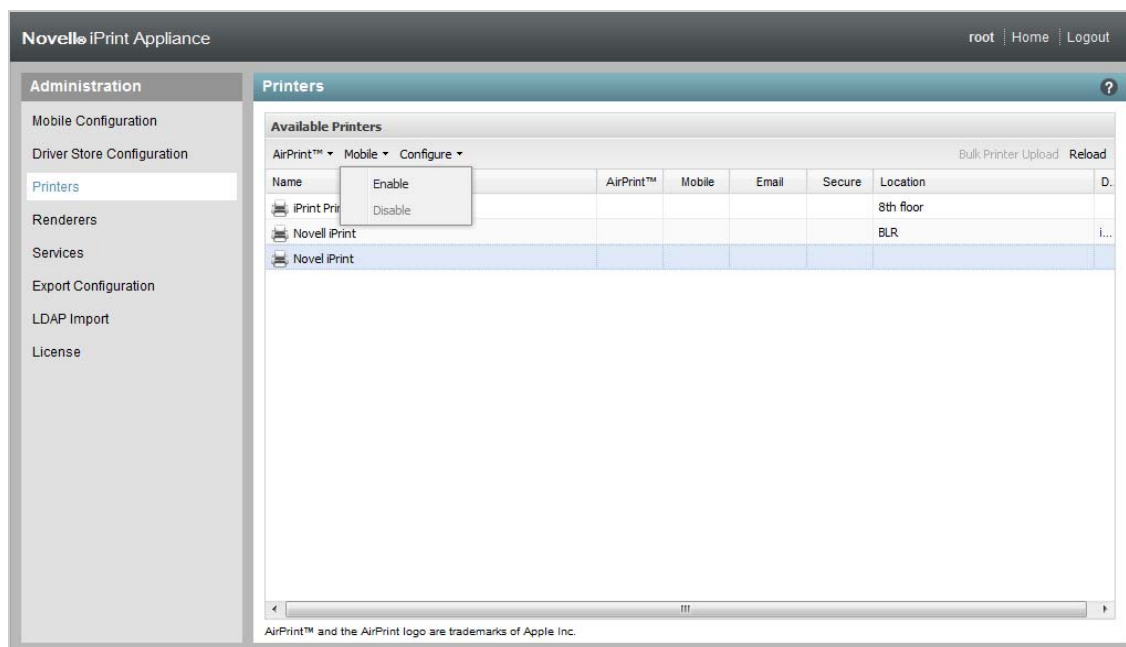
Printing a Test Page

- 1 To print a test page, go the *Control Panel > Devices and Printers*.
- 2 Go to the newly installed printer's *Printer properties*.
- 3 Click *Print Test Page*.

6 Enabling Novell iPrint for Mobile Printing

After the Novell iPrint Appliance is deployed, you can enable it for mobile printing. If you enable the Novell iPrint Appliance for mobile printing, users or employees in your organization can download the Novell iPrint Mobile App from the Windows App Store, Google PlayStore, BlackBerry World App store, or the Apple App Store and start printing to any printer in your organization's network, from any location using their mobile devices.

- 1 On a web browser, use either the DNS name or the IP address to access the iPrint Appliance Management Console. For example, <https://10.0.0.1:9443>.
- 2 Click *iPrint Appliance Configuration* icon. The Printers page with a list of available printers is displayed.
- 3 Under *Administration*, click *Printers*.
- 4 Select the printers that you want to enable for mobile printing.
The selected printers get highlighted.
- 5 Click *Mobile > Enable*.



- 5a On iOS devices, you can enable AirPrint by clicking *AirPrint > Enable Advertising*.

After the Novell iPrint is enabled for mobile printing, you might want to print a test page to ensure that it is working properly.

NOTE: You can print to an AirPrint enabled printer from any iOS device only if the iPrint Appliance and the mobile device share the same network. If your current network configuration does not meet this requirement, see [TID 7012895](#).

If a printer is not associated with a Linux driver, then the default Linux driver is used for mobile printing. If this driver is not compatible with your printer model, the printer might reject the print job, the printed copy might show some unrecognizable characters, or the quality of the printed copy might be different from what you expected. To avoid this, you need to upload the correct Linux driver and associate it with the printer, or make it the default driver.

TIP: For desktop quality printing for Microsoft Office and PDF documents, it is recommended that you install a remote renderer. The remote renderer has some minimum requirements in order to be successfully installed. For information, see “[Installing and Configuring a Remote Renderer](#)” in the *Novell iPrint Appliance 1.1 Administration Guide*.

7 Enabling Novell iPrint for Email Printing

Using email printing, you can print documents from any device capable of sending emails. When you enable email printing, the email address you provide becomes the global print email address. You can also configure a printer for private email printing by providing a specific email address to each printer.

For more information, see “[Enabling Email Printing](#)” in the *Novell iPrint Appliance 1.1 Administration Guide*.

7.1 Enabling Global Email Printing

When you enable email printing, you are prompted to specify an email address. This email address is the global print email address. When configured for email printing, iPrint Appliance becomes a client to an email server. The global email account inbox is polled for incoming print jobs, which are then routed to the intended printer.

- 1 On a web browser, use either the DNS name or the IP address of iPrint Appliance to access the iPrint Appliance Management Console. For example, `https://10.0.0.1:9443` or `https://iprint.example.com:9443`.
- 2 Specify the user name and password, then click *Log in*.
- 3 Click *iPrint Appliance Configuration*.
- 4 Under *Administration*, click *Mobile Configuration*.

The screenshot shows the 'Mobile Configuration' web interface. At the top, a yellow warning banner states: 'Saving changes on this page will restart the Mobile Server which can cause existing print job loss.' Below this, the 'Enable email-based printing' section is active, indicated by a checked checkbox. The form includes the following fields: 'Email Address', 'Account Username', 'Account Password', 'Re-type Password', 'Incoming Mail Server', 'Incoming Server Type' (set to IMAP), 'Outgoing (SMTP) Mail Server', 'Enable Mail-body Printing' (checked), and 'Polling Interval (Seconds)' (set to 30). Below these is the 'Printer Defaults' section with 'Paper Size' (Letter), 'Orientation' (Portrait), 'Enable Duplex Printing' (checked), and 'Enable Color Printing' (unchecked). 'Save' and 'Reset' buttons are at the bottom.

- 5 Choose *Enable email-based printing*.
This email address is the global print email address.

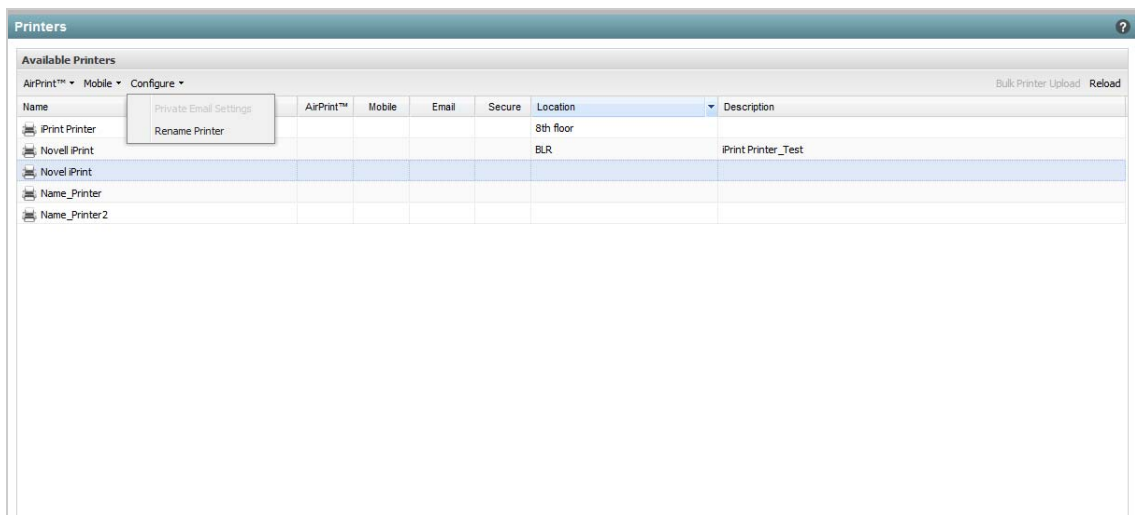
- 6 Specify the required information.
- 7 Click *Save*.

7.2 Enabling Private Email Printing

With private email printing, you can assign a specific email address to each printer. When a user sends an email printing request, the print job is sent directly to the printer. Users need not specify any print commands in the subject line of the email.

To enable private email printing, a global email printing account must be configured.

- 1 On a web browser, use either the DNS name or the IP address to access the Management Console. For example, <https://10.0.0.1:9443> or <https://iprint.example.com:9443>.
- 2 Click the *iPrint Appliance Configuration* icon.
- 3 Under *Administration*, click *Printers*.



- 4 Select a printer, click the *Configure* drop-down menu, then click *Private Email Settings*.
- 5 Specify the required information, then click *OK*.

8 Legal Notices

Novell, Inc. makes no representations or warranties with respect to the contents or use of this documentation, and specifically disclaims any express or implied warranties of merchantability or fitness for any particular purpose. Further, Novell, Inc. reserves the right to revise this publication and to make changes to its content, at any time, without obligation to notify any person or entity of such revisions or changes.

Further, Novell, Inc. makes no representations or warranties with respect to any software, and specifically disclaims any express or implied warranties of merchantability or fitness for any particular purpose. Further, Novell, Inc. reserves the right to make changes to any and all parts of Novell software, at any time, without any obligation to notify any person or entity of such changes.

Any products or technical information provided under this Agreement may be subject to U.S. export controls and the trade laws of other countries. You agree to comply with all export control regulations and to obtain any required licenses or classification to export, re-export, or import deliverables. You agree not to export or re-export to entities on the current U.S. export exclusion lists or to any embargoed or terrorist countries as specified in the U.S. export laws. You agree to not use

deliverables for prohibited nuclear, missile, or chemical biological weaponry end uses. Please refer to the [Novell International Trade Services Web page \(http://www.novell.com/info/exports/\)](http://www.novell.com/info/exports/) for more information on exporting Novell software. Novell assumes no responsibility for your failure to obtain any necessary export approvals.

Copyright © 2015 Novell, Inc. All rights reserved. No part of this publication may be reproduced, photocopied, stored on a retrieval system, or transmitted without the express written consent of the publisher.

For Novell trademarks, see [the Novell Trademark and Service Mark list \(http://www.novell.com/company/legal/trademarks/tmlist.html\)](http://www.novell.com/company/legal/trademarks/tmlist.html).

All third-party trademarks are the property of their respective owners.