

User Guide

Novell® SecureLogin

7.0

September, 2009

www.novell.com



Legal Notices

Novell, Inc., makes no representations or warranties with respect to the contents or use of this documentation, and specifically disclaims any express or implied warranties of merchantability or fitness for any particular purpose. Further, Novell, Inc., reserves the right to revise this publication and to make changes to its content, at any time, without obligation to notify any person or entity of such revisions or changes.

Further, Novell, Inc., makes no representations or warranties with respect to any software, and specifically disclaims any express or implied warranties of merchantability or fitness for any particular purpose. Further, Novell, Inc., reserves the right to make changes to any and all parts of Novell software, at any time, without any obligation to notify any person or entity of such changes.

Any products or technical information provided under this Agreement may be subject to U.S. export controls and the trade laws of other countries. You agree to comply with all export control regulations and to obtain any required licenses or classification to export, re-export or import deliverables. You agree not to export or re-export to entities on the current U.S. export exclusion lists or to any embargoed or terrorist countries as specified in the U.S. export laws. You agree to not use deliverables for prohibited nuclear, missile, or chemical biological weaponry end uses. See the [Novell International Trade Services Web page \(http://www.novell.com/info/exports/\)](http://www.novell.com/info/exports/) for more information on exporting Novell software. Novell assumes no responsibility for your failure to obtain any necessary export approvals.

Copyright © 2005-2009 Novell, Inc. All rights reserved. No part of this publication may be reproduced, photocopied, stored on a retrieval system, or transmitted without the express written consent of the publisher.

Novell, Inc., has intellectual property rights relating to technology embodied in the product that is described in this document. In particular, and without limitation, these intellectual property rights may include one or more of the U.S. patents listed on the [Novell Legal Patents Web page \(http://www.novell.com/company/legal/patents/\)](http://www.novell.com/company/legal/patents/) and one or more additional patents or pending patent applications in the U.S. and in other countries.

Novell, Inc.
404 Wyman Street, Suite 500
Waltham, MA 02451
U.S.A.
www.novell.com

Online Documentation: To access the latest online documentation for this and other Novell products, see the [Novell Documentation Web page \(http://www.novell.com/documentation\)](http://www.novell.com/documentation).

Novell Trademarks

For Novell trademarks, see [the Novell Trademark and Service Mark list \(http://www.novell.com/company/legal/trademarks/tmlist.html\)](http://www.novell.com/company/legal/trademarks/tmlist.html).

Third-Party Materials

All third-party trademarks are the property of their respective owners.

Contents

About This Guide	7
1 Overview	9
1.1 Management Utilities	9
1.1.1 Administrative Manage Utilities	9
1.1.2 The Novell SecureLogin Client Utility	11
2 Accessing the Novell SecureLogin Client Utility	13
3 Automating Logging In to Applications	15
3.1 Responding to Pop-Up Prompts	15
3.2 Predefined Application Definitions	16
3.2.1 Windows Applications	16
3.2.2 Web Applications	17
3.3 Enabling an Application for Single Sign-On Using a Predefined Application Definition	17
3.3.1 Enabling Single Sign-On for Novell WebAccess	17
3.4 Using the Default Selections	19
3.5 Using the Novell SecureLogin Client Utility to Enable Applications for Single Sign-on	20
3.6 Using a New Application Definition to Enable Applications for Single Sign-on	21
3.7 Changing the Name of an Application Definition	23
3.8 Modifying an Application Definition	23
3.8.1 Modifying through the Application Definition Wizard	23
3.8.2 Modifying through the Manage Logins Menu	25
3.9 Deleting an Application Definition	27
4 Creating Login Credentials	29
4.1 Creating Login Credentials Using the Add New Login wizard	29
4.1.1 Creating the Login	29
4.1.2 Specifying the Credentials	30
4.1.3 Linking a Login to an Application	30
4.1.4 Delinking a Login from an Application	30
4.2 Adding Multiple Logins	30
4.2.1 Prerequisites	31
4.2.2 Creating Another Login	31
4.2.3 Viewing the Additional Login	32
4.2.4 Testing the Multiple Logins	32
5 Changing Preferences	33
5.1 Viewing and Changing the Preferences	33
5.2 General Preference, Definitions, and Values	34
5.3 Java Preference, Definitions, and Values	36
5.4 Web Preferences, Definitions, and Values	37
5.5 Windows Preferences, Definitions, and Values	39

6	Managing Your Passwords	41
6.1	Creating a Password Policy	41
6.2	Editing a Password Policy	45
6.3	Deleting a Password Policy	46
7	Managing Information Cache	47
7.1	Refreshing the Cache	47
7.2	Backing Up User Information	47
7.3	Restoring User Information	49
	7.3.1 Deleting the Workstation Cache	49
	7.3.2 Restoring the Backup File	50
7.4	Working Online and Working Offline	51
8	Managing the Passphrase	53
8.1	Creating a Passphrase	53
8.2	Changing a Passphrase	55

About This Guide

This document contains information on the following:

- ♦ Chapter 1, “Overview,” on page 9
- ♦ Chapter 2, “Accessing the Novell SecureLogin Client Utility,” on page 13
- ♦ Chapter 3, “Automating Logging In to Applications,” on page 15
- ♦ Chapter 4, “Creating Login Credentials,” on page 29
- ♦ Chapter 5, “Changing Preferences,” on page 33
- ♦ Chapter 6, “Managing Your Passwords,” on page 41
- ♦ Chapter 7, “Managing Information Cache,” on page 47
- ♦ Chapter 8, “Managing the Passphrase,” on page 53

Audience

This guide is intended for the end users of Novell SecureLogin.

Feedback

We want to hear your comments and suggestions about this manual and the other documentation included with this product. Please use the User Comments feature at the bottom of each page of the online documentation, or go to the [Novell Feedback Web site \(http://www.novell.com/documentation/feedback.html\)](http://www.novell.com/documentation/feedback.html) and enter your comments there.

Documentation Updates

For the most recent version of the *Novell SecureLogin 7.0 User Guide*, visit the [Novell Documentation Web site \(http://www.novell.com/documentation/securelogin70/index.html\)](http://www.novell.com/documentation/securelogin70/index.html).

Additional Documentation

This *User Guide* is a part of the documentation set for Novell SecureLogin 7.0. Other documents are:

- ♦ QuickStart: “[Novell SecureLogin Quick Reference Guide](#)”
- ♦ Readme: “[Novell SecureLogin 7.0 Readme](#)”
- ♦ Overview: [Novell SecureLogin Overview Guide](#)
- ♦ Installation: [Novell SecureLogin Installation Guide](#)
- ♦ Administration: [Novell SecureLogin Administration Guide](#)
- ♦ Wizards Administration: [Novell SecureLogin Application Definition Wizard Administration Guide](#)
- ♦ pcProx Administration: [pcProx Guide](#)
- ♦ Application Definition: [Novell SecureLogin Application Definition Guide](#)
- ♦ Citrix and Terminal Services: [Novell SecureLogin Citrix and Terminal Services Guide](#)

Documentation Conventions

In Novell documentation, a greater-than symbol (>) is used to separate actions within a step and items in a cross-reference path.

A trademark symbol (® , ™ , etc.) denotes a Novell trademark. An asterisk (*) denotes a third-party trademark.

Overview

1

Novell® SecureLogin is a Single Sign-on (SSO) product. It eliminates the necessity for users to remember multiple usernames and passwords. It stores usernames and passwords and automatically retrieves them for users when required.

Novell SecureLogin consists of multiple, integrated security systems that provide authentication and single sign-on to networks and applications.

Novell SecureLogin has wizards, an iManager plug-in, and tools that make it easy to centrally configure for use on the corporate network.

It supports usernames, passwords, and multi-factor authentication such as smart cards, tokens, or biometrics at the network and application levels.

In this document, we take a menu-oriented approach in explaining how to use the Novell SecureLogin Client Utility to customize Novell SecureLogin to your preferences and requirements.

1.1 Management Utilities

Novell SecureLogin has two management utilities:

- ♦ [Section 1.1.1, “Administrative Manage Utilities,” on page 9](#)
- ♦ [Section 1.1.2, “The Novell SecureLogin Client Utility,” on page 11](#)

1.1.1 Administrative Manage Utilities

Administrators use the Administrative Management utilities: iManager SSO plug-in, SecureLogin Manager, and Active Directory* Computer Users and Snap Ins to define the settings and preferences of Novell SecureLogin for use by the end users.

Figure 1-1 *iManager: One of the Administrative Management Utilities*

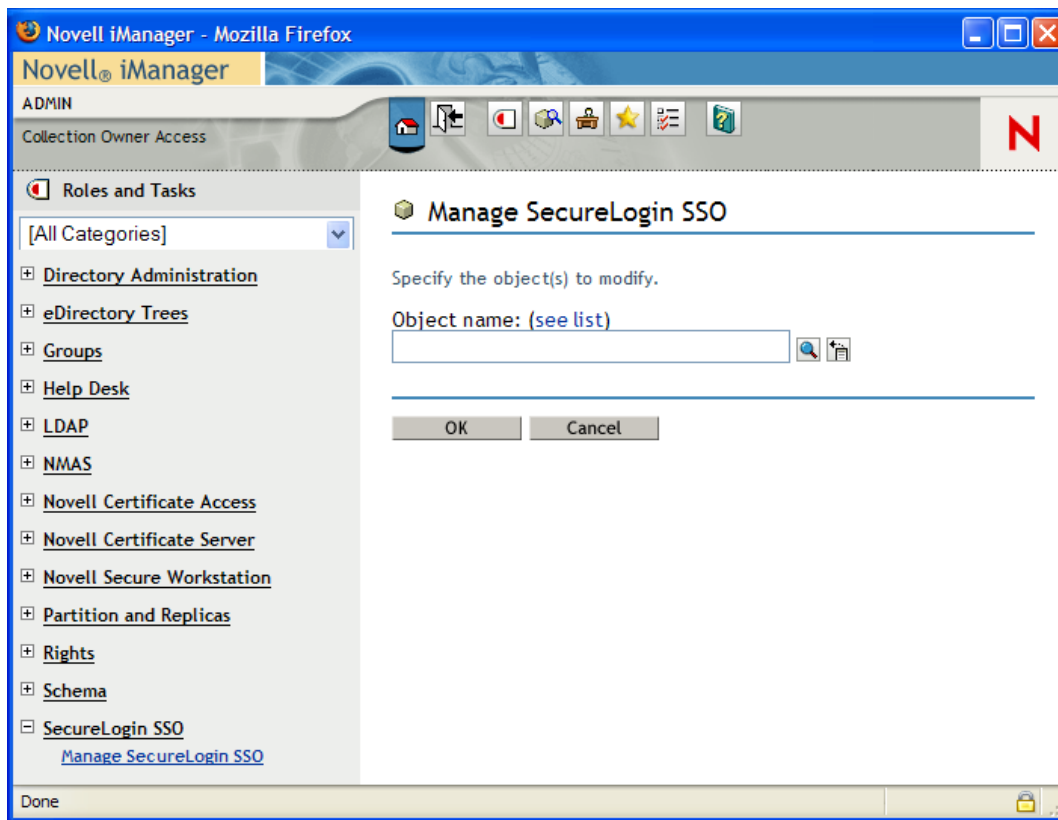
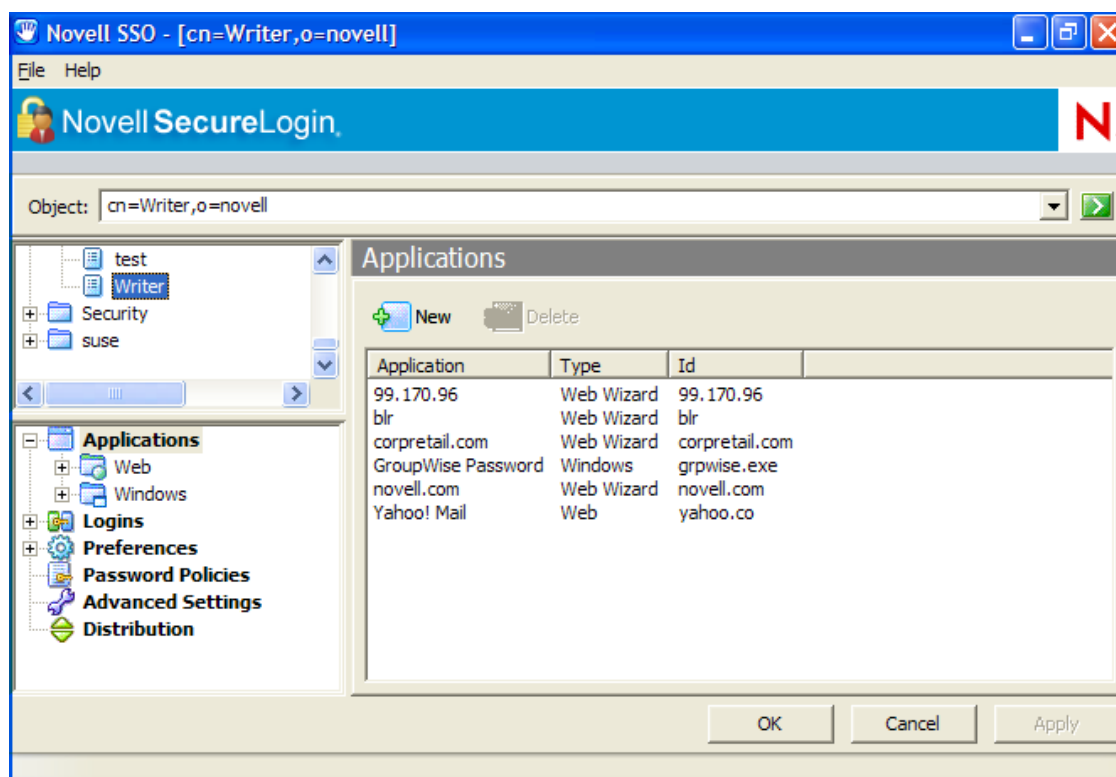


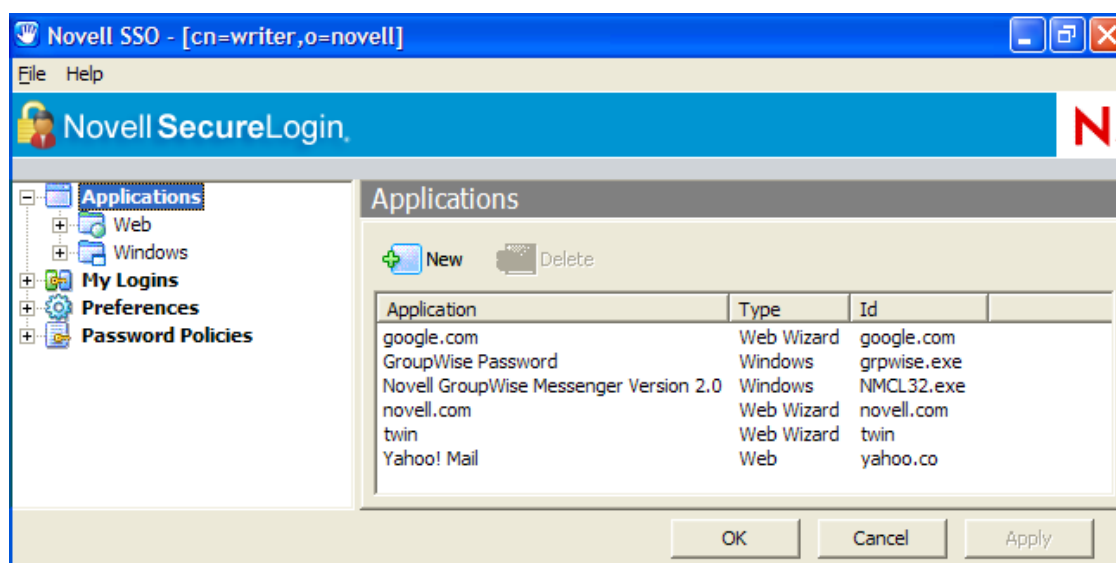
Figure 1-2 *The SecureLogin Management*




1.1.2 The Novell SecureLogin Client Utility

You can use the Novell SecureLogin Client Utility to customize the Novell SecureLogin to suit your requirements. For example, you can set your own passphrase question and answer, and set your own password policies.

Figure 1-3 *The Novell SecureLogin Client Utility*



Accessing the Novell SecureLogin Client Utility

The Novell SecureLogin Client Utility is represented by an icon  in the notification area (system tray).

To launch Novell® SecureLogin:

- 1 Click *Start > Programs > Novell SecureLogin*.

After you successfully launch the Novell SecureLogin, the  appears in the notification area.

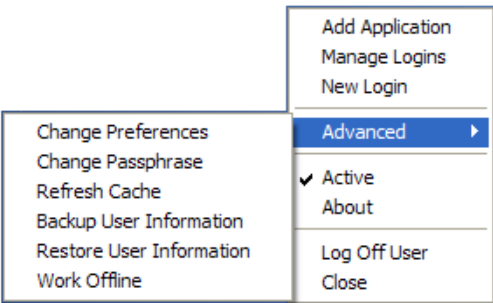
Double-click this icon to launch the Novell SecureLogin Client Utility.

This icon is a shortcut the Novell SecureLogin functionality on your workstation.

- 1 Right-click the Novell SecureLogin icon in the notification area.
- 2 Select the task you want to perform.

For example, select *Add Applications* to add, delete, and manage the applications.

Figure 2-1 The Advanced Preferences



The following table provides information on the tasks available in the menu. If a task does not appear in the menu, your administrator has not enabled this functionality for you.

Option	Description
<i>Add Application</i>	Starts the Add Applications wizard. Enables an application for single-sign on by creating a script that automates the login.
<i>Manage Logins</i>	Launches the Novell SecureLogin Novell SecureLogin Client Utility. Adds login IDs (login credentials), links login IDs to applications, manages password policies, and manages Novell SecureLogin settings.

Option	Description
<i>New Login</i>	<p>Enables you to create multiple single sign-ons or login IDs for an application. For example, if you have three accounts on the same application, SecureLogin manages the three sets of credentials.</p> <p>SecureLogin provides the option to select the preferred account when the application starts.</p>
<i>Advanced > Change Preferences</i>	Opens the Novell SecureLogin Client Utility, with the <i>Preferences</i> option selected.
<i>Advanced > Change Passphrase</i>	Enables you to change your passphrase question or passphrase answer.
<i>Advanced > Refresh Cache</i>	Refreshes the local cache settings and updates caches with any changes made at the associated container or organizational unit level.
<i>Advanced > Backup User Information</i>	Backs up the Novell SecureLogin user information into a file.
<i>Advanced > Restore User Information</i>	Restores Novell SecureLogin information from the backup file.
<i>Advanced > Work Online / Offline</i>	<p>Toggles between the online and offline states of SecureLogin. When you work offline, SecureLogin uses the local (secondary) cache rather than the directory.</p> <p>This option is not displayed in Standalone mode</p>
<i>Active</i>	Determines whether SecureLogin is enabled (active) or disabled.
<i>About</i>	Displays the SecureLogin version number and the status of the data stores. The primary data store is the directory. The secondary is the local cache.
<i>Log User Off Windows</i>	Enables you to shut down all programs, including SecureLogin, and log out from the workstation. Performs the same function as the <i>Shut Down > Log Off</i> option on the Windows Start menu.
<i>Close</i>	Shuts down SecureLogin.

Automating Logging In to Applications

3

An application definition is a set of instructions telling Novell® SecureLogin how to handle the login for a certain application. SecureLogin uses application definitions to automatically log you in to Windows*, Web, or Java* applications. Novell SecureLogin has predefined application definitions for some of the applications. You can use the Application Definition Wizard to create new application definitions.

The wizard captures and stores your login name (username), password, and any other information required for authentication.

You can also write your own application definitions. However, we recommend that you use the Application Definition Wizard to create your application definition.

SecureLogin stores all application definitions in a secure encrypted cache on your computer and in the corporate directory.

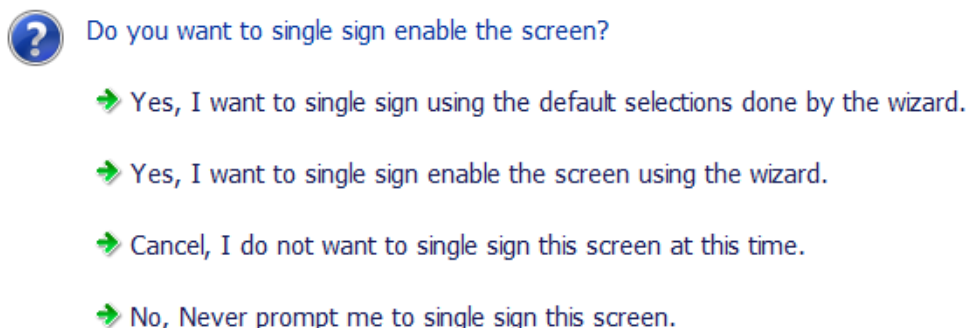
- ♦ [Section 3.1, “Responding to Pop-Up Prompts,” on page 15](#)
- ♦ [Section 3.2, “Predefined Application Definitions,” on page 16](#)
- ♦ [Section 3.3, “Enabling an Application for Single Sign-On Using a Predefined Application Definition,” on page 17](#)
- ♦ [Section 3.4, “Using the Default Selections,” on page 19](#)
- ♦ [Section 3.5, “Using the Novell SecureLogin Client Utility to Enable Applications for Single Sign-on,” on page 20](#)
- ♦ [Section 3.6, “Using a New Application Definition to Enable Applications for Single Sign-on,” on page 21](#)
- ♦ [Section 3.7, “Changing the Name of an Application Definition,” on page 23](#)
- ♦ [Section 3.8, “Modifying an Application Definition,” on page 23](#)
- ♦ [Section 3.9, “Deleting an Application Definition,” on page 27](#)

3.1 Responding to Pop-Up Prompts

After Novell SecureLogin is installed on your desktop, Novell SecureLogin watches for applications that are not enabled for single sign-on. Upon detecting such an application, Novell SecureLogin prompts you to use a wizard to enable those applications for single sign-on and thereby simplify future logins.

If Novell SecureLogin detects an login screen on an application, it presents the following dialog box.

Figure 3-1 Prompt to Enable for Single Sign-On



Select one of the following options:

- ♦ **I want to single sign using the default selections done by the wizard:** Select *I want to single sign using the default selections done by the wizard* option to create an application definition using the default settings.

Through the default settings, you can create an application definition to handle the username and password fields and submit button identified by the Wizard.

- ♦ **I want to single sign enable the screen using the wizard:** If Novell SecureLogin detects more than two text fields or one button in a login dialog box, select *I want to single sign enable the screen using the wizard (Recommended)* option. Through this you can review the fields identified by the Wizard, confirm that correct fields are selected and button are identified.
- ♦ **I do not want to single sign this screen at this time:** Select *I do not want to single sign this screen at this time* if you do not want to enable an application for single sign-on at an instance.
- ♦ **Never prompt me to single sign this screen:** Select *Never prompt me to single sign this screen* if you do not want to enable an application for single sign-on. You are not be prompted to enable the application for single sign-on, again.

3.2 Predefined Application Definitions

SecureLogin has predefined application definitions to automatically capture and store login credentials for many common applications.

If a predefined application definition does not exist for your favorite application you, use Application Definition Wizard to create a new application definition to capture and store your logon credentials, along with any other information required for authentication. For details on using the Application Definition Wizard, see the

3.2.1 Windows Applications

Some of the predefined application definitions for Windows applications include:

- ♦ 401K Web Login
- ♦ ActiveSync*
- ♦ AOL Instant Messenger*
- ♦ Cisco* VPN

- ♦ Citrix Program Neighborhood
- ♦ Citrix Program Neighborhood Agent
- ♦ Lotus* Notes* v5 and v6.5
- ♦ Microsoft Outlook*
- ♦ Microsoft Outlook Express

3.2.2 Web Applications

Some of the predefined application definitions for Web applications are:

- ♦ Amazon.com
- ♦ eBay
- ♦ Hotmail
- ♦ QANTAS Frequent Flyer
- ♦ CNN Member Services
- ♦ Monster.com

3.3 Enabling an Application for Single Sign-On Using a Predefined Application Definition

The procedure to use a predefined application definition to enable an application definition is the same for all Web, Windows, and Java applications.

1 Launch an application.

If a predefined application definition exists for that application, Novell SecureLogin automatically detects the application definition.

The SecureLogin dialog box is displayed.

2 Select *I want to single sign the screen using the predefined application definition*.

SecureLogin identifies the application and displays the name of the application in the prompt.

3 You are prompted to specify the credentials for the application. Specify the username, password, and any other information required.

4 Click *OK*.

SecureLogin saves your credentials and uses them to log in to the application.

The next time you launch the application, you are not prompted for username and password. Novell SecureLogin provides this.

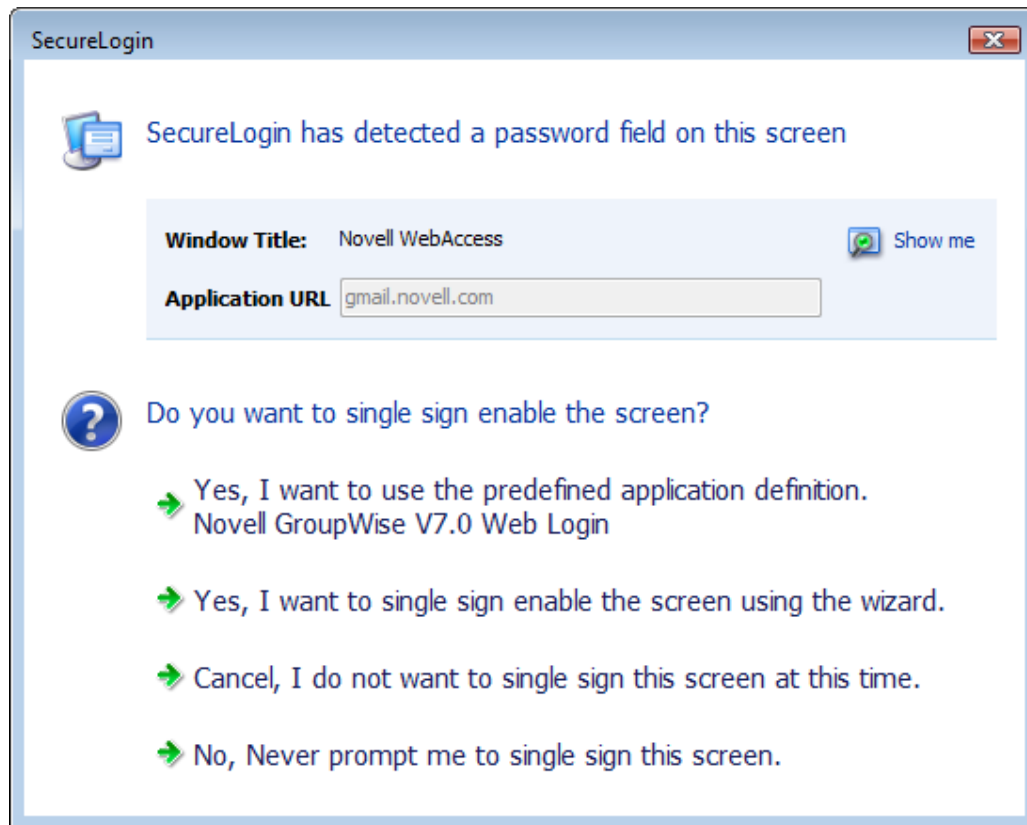
3.3.1 Enabling Single Sign-On for Novell WebAccess

The following example demonstrates enabling single sign-on for a Novell WebAccess. SecureLogin provides a predefined application for Novell WebAccess.

This procedure assumes that you already have a GroupWise account.

1 Launch Novell WebAccess.

A predefined application definition exists for Novell WebAccess. Novell SecureLogin detects the application and the SecureLogin dialog box is displayed.

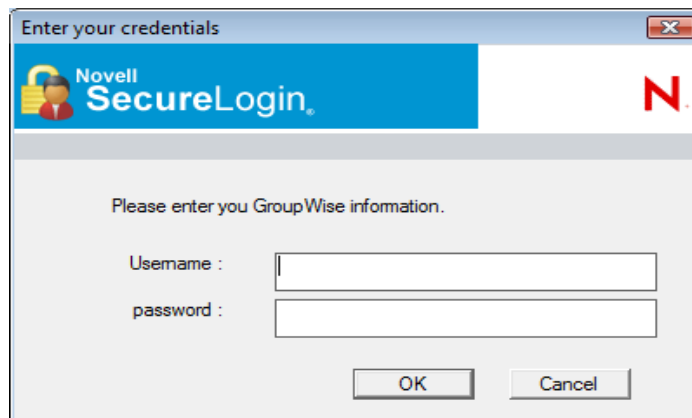


- 2 Select *I want to single sign the screen using the predefined application definition. Novell GroupWise Messenger V7.0 Web Login.*

Another enhancement to the Wizard in this release is that it detects the name of the application and displays it. In this example, Novell SecureLogin identifies that you are creating an application definition for Novell GroupWise WebAccess and it displays the name.

The Enter your GroupWise information dialog box is displayed.

- 3 Specify your Username and password, then click *OK*.



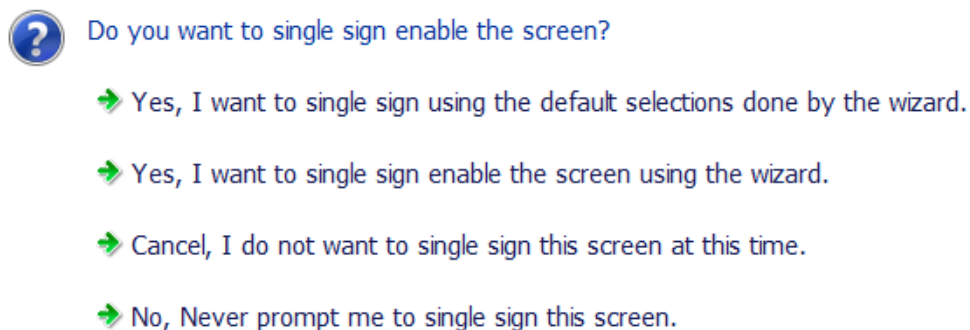
Novell SecureLogin saves the credentials and uses them to log in to your GroupWise WebAccess account.

To test the application definition, log out and log in. If the application is defined correctly with the correct credentials, you are logged in successfully. If your login is not successful, delete the application definition and repeat the above steps. You might also need to review the application definition for completeness of event responses and errors.

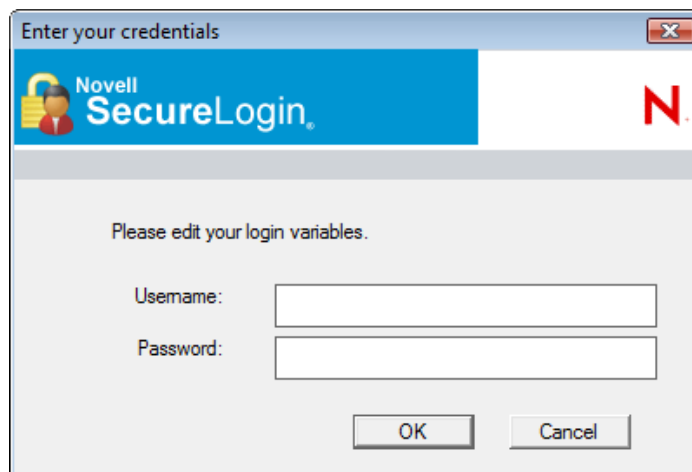
3.4 Using the Default Selections

- 1 Launch the Web application for which you want to enable single sign-on.
- 2 Novell SecureLogin detects the application and prompts you to enable single sign-on.

Figure 3-2 Prompt to Enable for Single Sign-on



- 3 Select *Yes, I want to single sign using the default selections done by the wizard.*
- 4 The Enter your Credentials dialog box is displayed.





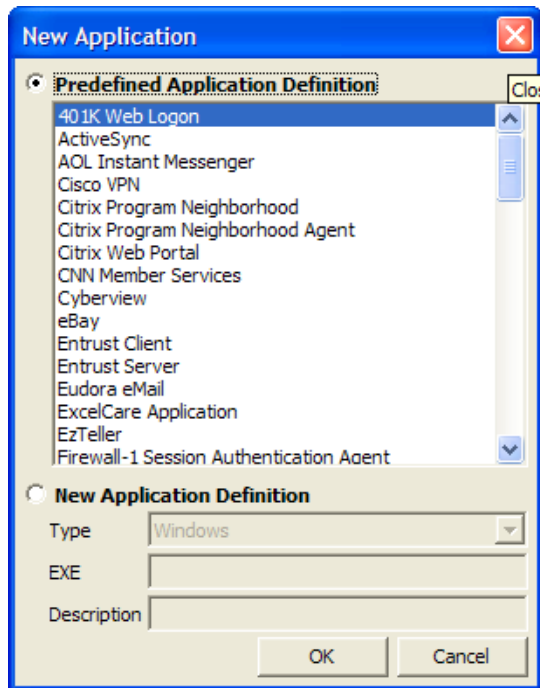
- 5 Specify your credentials, then click *OK*.

Novell SecureLogin saves your credentials in the directory. The next time you launch the application, SecureLogin provides the credentials for you.

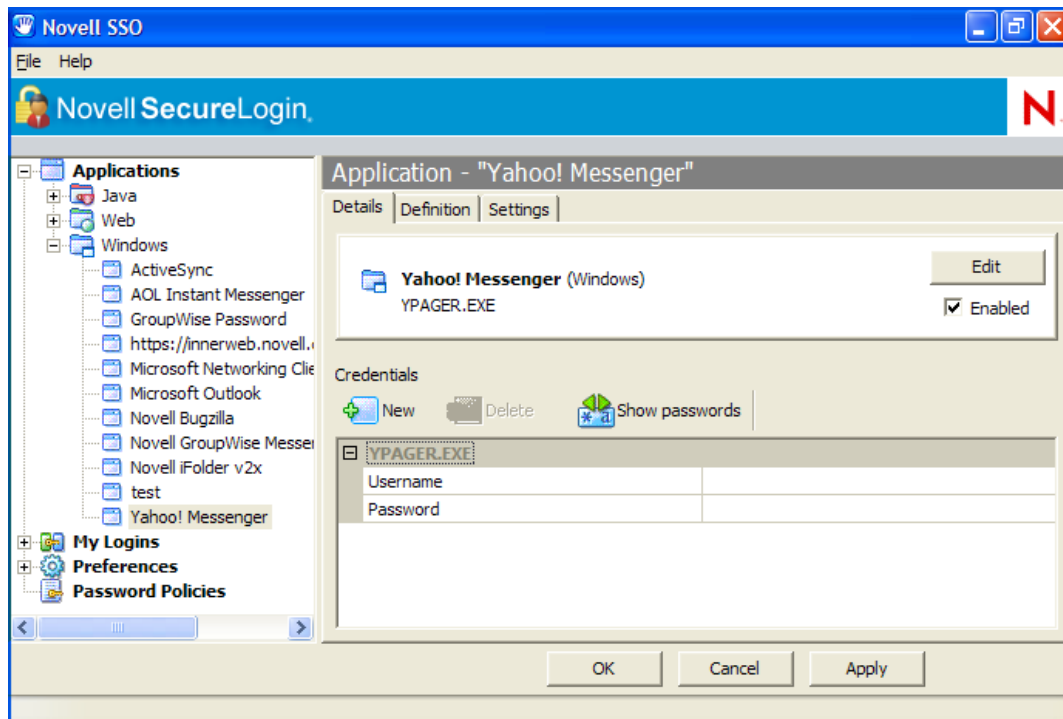
3.5 Using the Novell SecureLogin Client Utility to Enable Applications for Single Sign-on

You can enable an application for single sign-on through the Novell SecureLogin Client Utility as well as through the Application Definition Wizard.

- 1 Double-click the Novell SecureLogin icon  in the notification area. This launches the Novell SecureLogin Client Utility with the *Application* menu selected.
- 2 Click . Alternatively, select *File > New > Application*. The New Application dialog box appears.





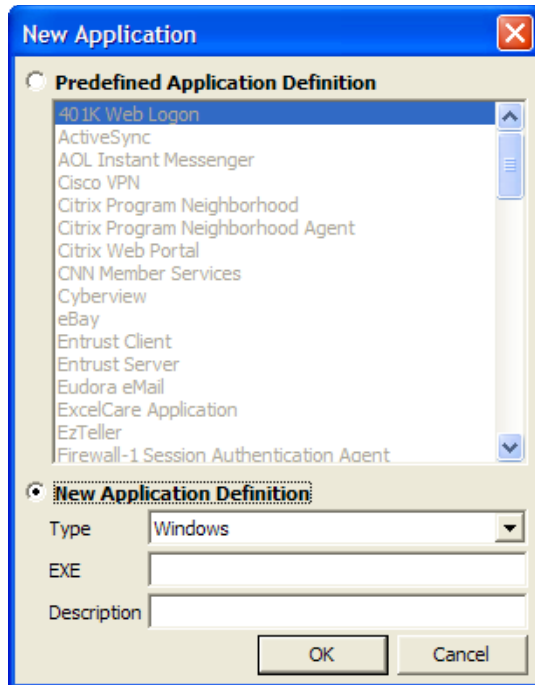
- 3 From the *Predefined Application Definition* list, select the appropriate application definition.
- 4 Click *OK*. Details of the selected application appear.
- 5 On the Details page, specify the username and password of the application.



- 6 (Optional) Click the *Settings* tab and define your preferences.
- 7 Click *Apply* to apply the new login details.
- 8 Click *OK* to save and exit.

3.6 Using a New Application Definition to Enable Applications for Single Sign-on

- 1 Double-click the Novell SecureLogin icon  in the notification area. This launches the Novell SecureLogin Client Utility with the *Application* menu selected.
- 2 Click  **New**. Alternatively, select *File > New > Application*. The New Application dialog box appears.
- 3 Select *New Application Definition*.



- 4 From the *Type* drop-down list, select the type of application.

You can select:

- ♦ Windows
- ♦ Terminal Launcher
- ♦ Startup
- ♦ Java
- ♦ Generic
- ♦ Advanced Web
- ♦ Web wizard Script

- 5 Specify other details such as the name, the URL, executable, and description as required.

- 6 Click *OK*.

You have successfully added an application. You now need to specify the credentials for the application.

- 7 From the *Application* navigation tree on the left pane, select the application you created.

- 8 Specify the username and password of the application.


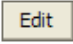
- 9 (Optional) Specify the application definition of this application.

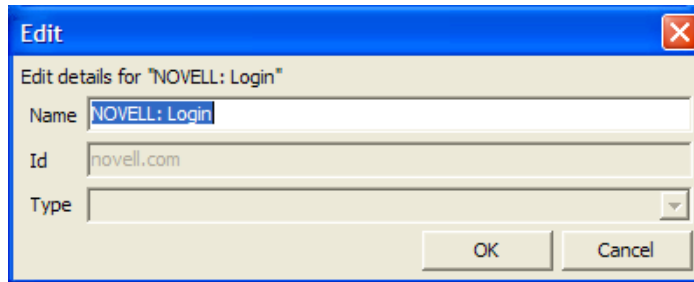
- 10 (Optional) Change the default settings to suit your requirements.

- 11 Click *Apply*. Your applications details are added to Novell SecureLogin.

- 12 Click *OK* to save and exit.

3.7 Changing the Name of an Application Definition

- 1 Double-click the Novell SecureLogin  icon in the notification area.
- 2 In the Application navigation area on the left panel, select the application you want to modify.
- 3 Click . The Edit dialog box appears.



- 4 Make the required changes. You can modify the name, ID, and type of the application.
- 5 Click *OK*. The changes are saved.

3.8 Modifying an Application Definition

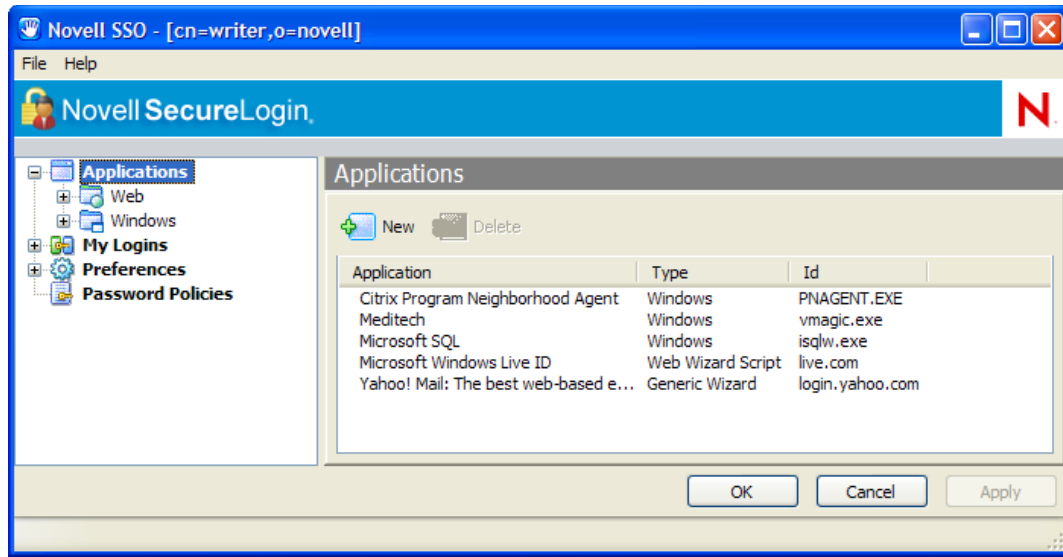
This section provides information on modifying the application definitions created using the Application Definition Wizard introduced in Novell SecureLogin 7.0. You can use the Application Definition Wizard to add or modify the definition, add notifications for password change and login notifications.

NOTE: Predefined application definitions cannot be edited using the Application Definition Wizard. You must edit them manually. To know more about editing the application definitions manually, refer the

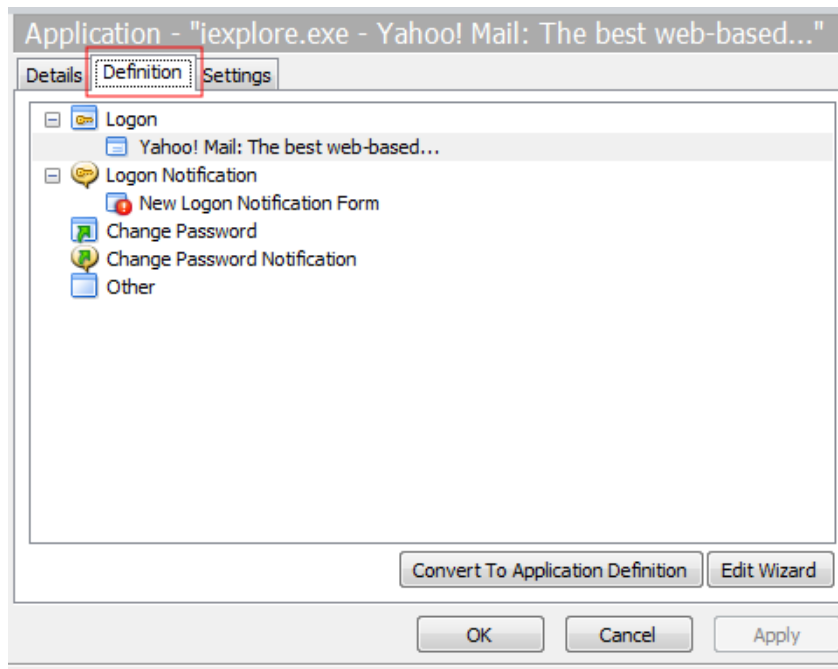
You can modify the Application Definition Wizard in one of the following ways:

3.8.1 Modifying through the Application Definition Wizard

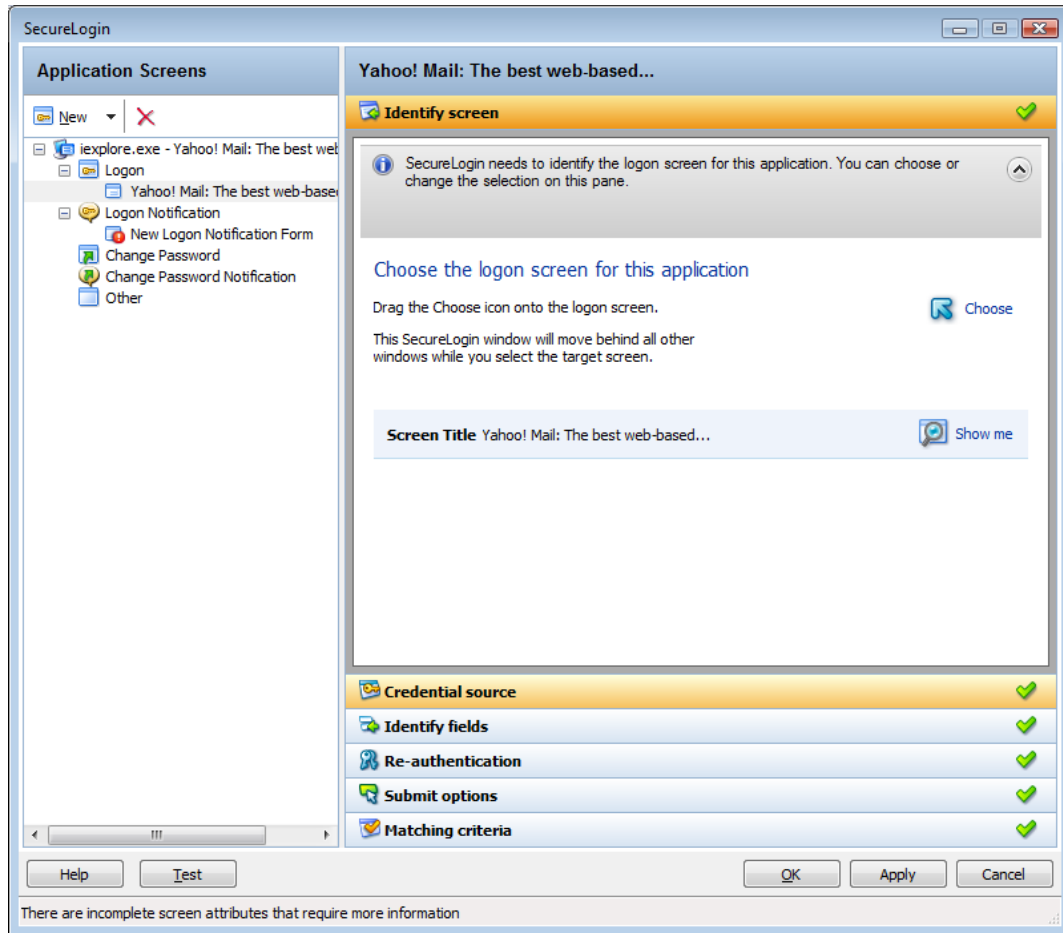
- 1 Double-click the Novell SecureLogin icon on the notification area.
The Application Definition Wizard opens displaying a list of application enabled for single sign-on.



- 2 From the *Applications* pane, select the application deviation you want to modify.
- 3 Click the *Definition* tab.



- 4 Select *Edit Wizard*. The attributes pane opens enabling you to edit the application definition.



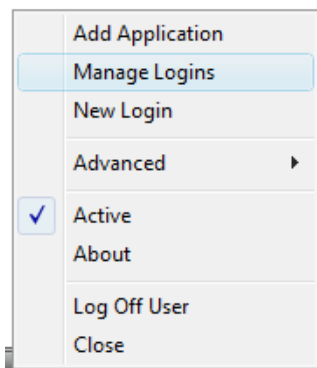
5 Make the changes.

Each of the attributes are explained in detailed in the earlier section. Refer

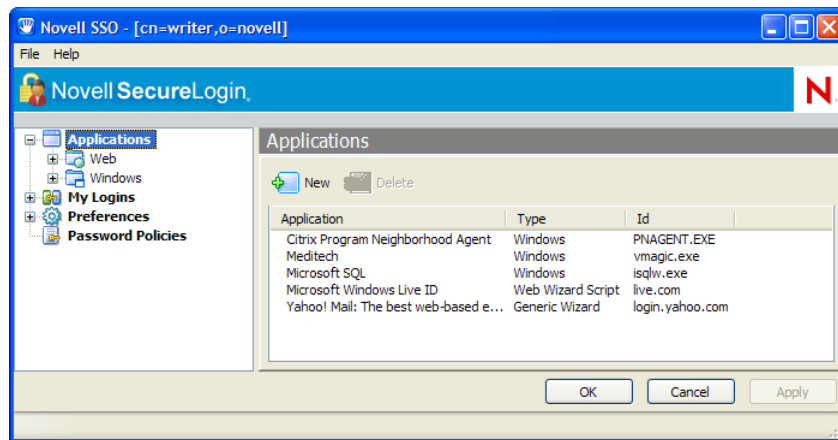
6 Click *Apply* and *OK* to save and exit.

3.8.2 Modifying through the Manage Logins Menu

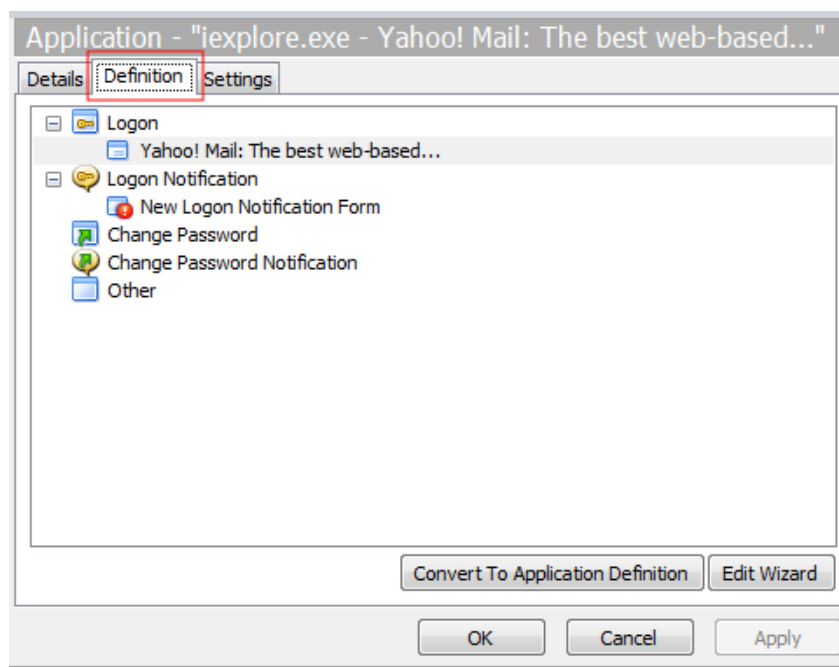
1 Right the Novell SecureLogin icon on the notification area, then select *Manage Logins*.



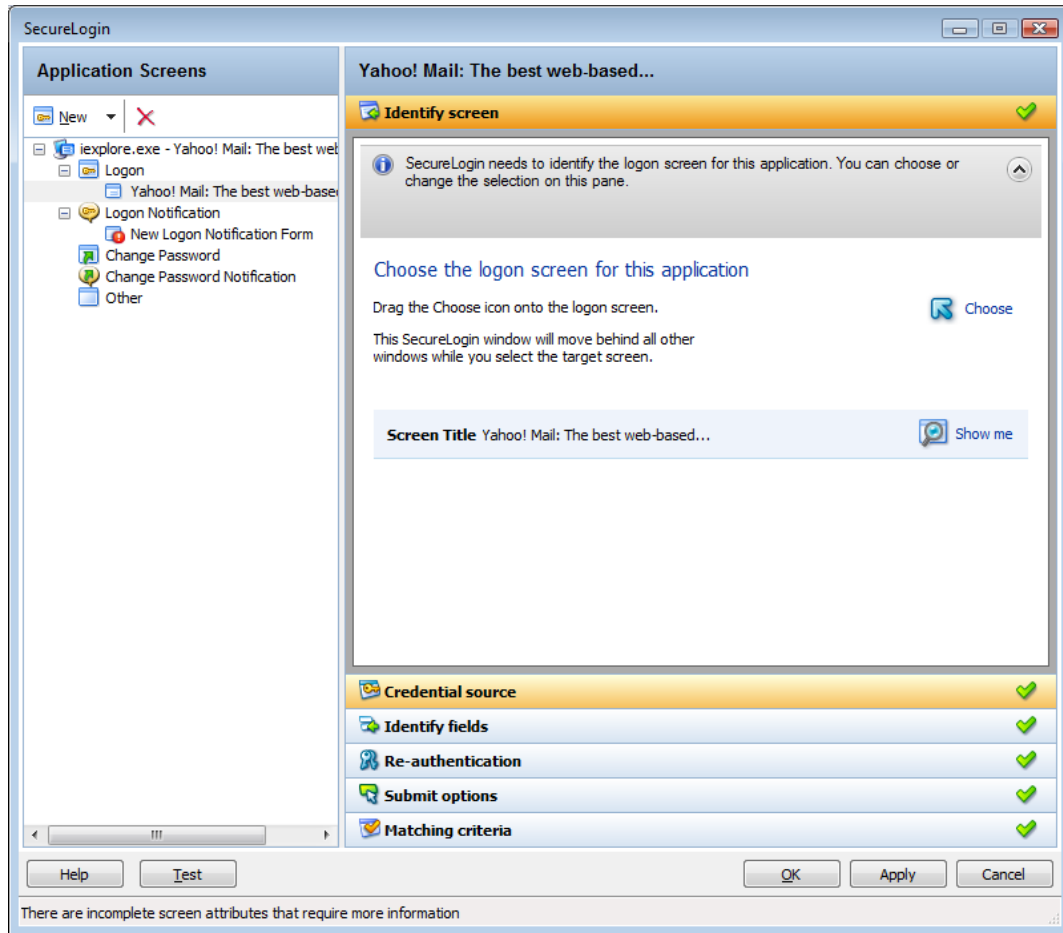
The administrative management utility displays a list of applications that are already enabled for single sign-on.



- 2 From the *Applications* pane, select the application deviation you want to modify.
- 3 Click the *Definition* tab.



- 4 Select *Edit Wizard*. The attributes pane opens enabling you to edit the application definition.




5 Make the changes.

Refer the

6 Click *Apply* and *OK* to save and exit.

3.9 Deleting an Application Definition

- 1 Double-click the Novell SecureLogin  icon in the notification area.
- 2 In the Application navigation on the left panel, right-click the application you want to delete.
- 3 Click *Delete*. The selected application is deleted.

Creating Login Credentials

4

Novell SecureLogin allows you to enable multiple logins for single sign-on to the same application.

Through the *My Login* page, you can view and edit Novell® SecureLogin user data, such as usernames and passwords that allow you to successfully log in to an application.

To use Novell SecureLogin to automatically log you in to an application, you must create a Login (set of credentials) and link it to that application.

If you add an application that has a predefined application, you need to link the login to it. You can provide login variables the next time that you access the application. However, you do not need to add or create login for applications that you enabled for single sign-on in the following ways:

- ♦ If you encountered a new application through a pop-up prompt and then used the Add Applications wizard to enable the application.
- ♦ If you ran the Add Applications wizard and selected a Web Page or Windows Application option as the script type.

In these two cases, the Application Definition Wizard created the login while you were adding the application to the single sign-on functionality.



You can use the same login to log you in to more than one application.

Also, if you have multiple roles, you can set up multiple logins for the same application. For example, you might be a network administrator as well as a user. When you log in to the network as administrator and then launch an application, Novell SecureLogin prompts you to select a profile. After you select the administrator profile, Novell SecureLogin then automatically logs you in with the appropriate credentials.

4.1 Creating Login Credentials Using the Add New Login wizard

- ♦ [Section 4.1.1, “Creating the Login,” on page 29](#)
- ♦ [Section 4.1.2, “Specifying the Credentials,” on page 30](#)
- ♦ [Section 4.1.3, “Linking a Login to an Application,” on page 30](#)
- ♦ [Section 4.1.4, “Delinking a Login from an Application,” on page 30](#)

4.1.1 Creating the Login

- 1 Right-click the Novell SecureLogin  icon in the notification area, then click *Manage Logins*.
or,
Double-click the Novell SecureLogin  icon in the notification area.
This launches the Novell SecureLogin Client Utility.
- 2 Click *My Logins > New*.
- 3 Specify a name or ID in the Create Login dialog box, then click *OK*.

You have now successfully created a new login. Repeat [Step 1 on page 29](#) through [Step 3 on page 29](#) to create other logins.


However, you need to specify the username and password to this login.

Repeat Step 1 through 4 to create other logins.

- 4 Continue with [Section 4.1.2, “Specifying the Credentials,” on page 30](#) to specify the username and password for this login.

4.1.2 Specifying the Credentials


In the previous task, you created a login. Use the following steps to specify the credentials for your login,

- 1 In the *My Login* list in the left panel, select the login you created. The login page is displayed.
- 2 Select *Username*, then specify the username in the adjacent text field.
- 3 Select *Password*, then specify the password in the adjacent text field. The password is displayed as a series of asterisks.
Select  **Show passwords**, it displays the actual password, instead of a series of asterisks.
- 4 Click *Apply*, then click *OK*. Your login credentials are saved.

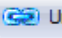
Repeat [Step 1 on page 30](#) through [Step 4 on page 30](#) to specify the credentials to other logins.

4.1.3 Linking a Login to an Application

To add a newly created login to an application:

- 1 From *My Logins*, select the login that you want to link to an application.
- 2 Click  **Link**. The Applications List window opens.
- 3 Select the applications you want to link to this login. Click *OK*.
- 4 Click *Apply*, then click *OK*. The login information is saved.

4.1.4 Delinking a Login from an Application

- 1 From *My Logins*, select the login that you want to delink to an application.
- 2 Click  **Unlink**. The Application List window opens.
- 3 Select the applications you want to delink from the login.
- 4 Click *Apply*, then click *OK*. The change is saved.

4.2 Adding Multiple Logins

- ♦ [Section 4.2.1, “Prerequisites,” on page 31](#)
- ♦ [Section 4.2.2, “Creating Another Login,” on page 31](#)
- ♦ [Section 4.2.3, “Viewing the Additional Login,” on page 32](#)
- ♦ [Section 4.2.4, “Testing the Multiple Logins,” on page 32](#)

4.2.1 Prerequisites


- ♦ Before you commence adding another login to an existing login, the first account must be enabled for single sign-on.
- ♦ Before you add multiple logins to the first account, we recommend that you make a list of the usernames, passwords, and a unique name to identify the login.

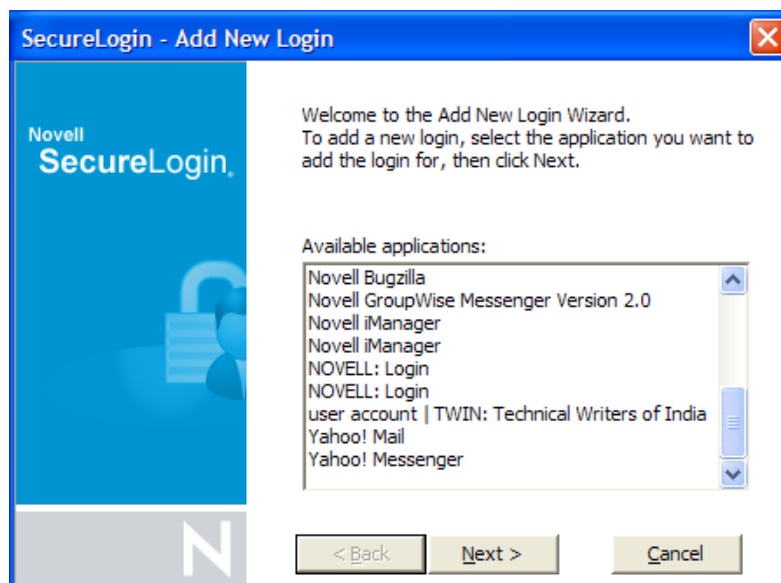
The following is an example list:

Table 4-1 List of Additional Logins

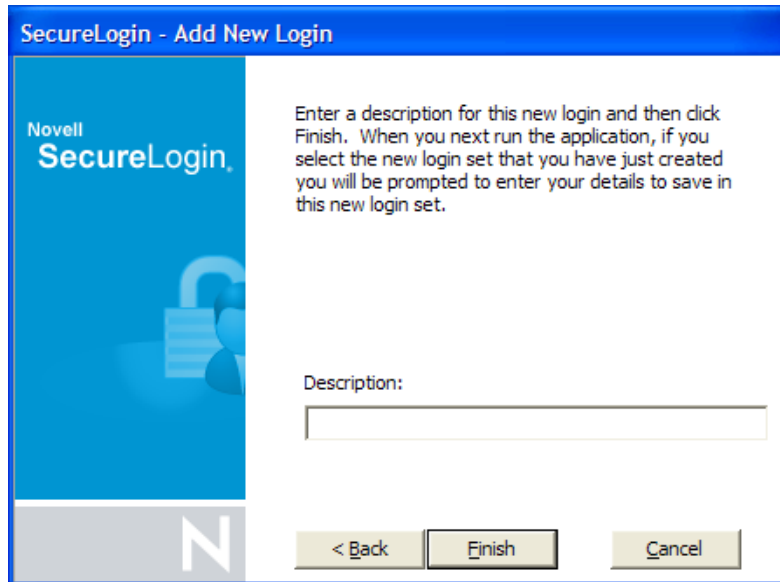
Name	User Name	Password
Administrator	admin	123456
Support	help	abcdef
User	test1	xyz123

4.2.2 Creating Another Login

- 1 Right-click the Novell SecureLogin  icon in the notification area, then select *New Login*. The SecureLogin - Add New Login wizard welcome dialog box is displayed.




- 2 Select the required application.
- 3 Click *Next*. Click Next. A page displays where you can provide a description for the login.



- 4 In the *Description* field, specify a descriptive name for the login (for example, NSL Administrator).
- 5 Click *Finish*. A page appears where you can enter your credentials.
- 6 In the *Username* field, specify the username.
- 7 In the *Password* field, specify the password.
- 8 Specify any additional variables as required.
- 9 Click *OK* to save your information and exit the Novell SecureLogin Client Utility.
- 10 Repeat **Step 1 on page 30** through **Step 9 on page 32** to add any additional logins. When you have created all logins, you can view and manage them in the Novell SecureLogin Client Utility.

4.2.3 Viewing the Additional Login

- 1 Right-click the Novell SecureLogin  icon in the notification area, then select *New Login*. The SecureLogin - Add New Login wizard welcome dialog box is displayed.
- 2 In the navigation tree, select *My Logins*. The My Login page is displayed.
- 3 Verify that the additional login is added to the My Logins pane.
- 4 Click *OK* to close the Novell SecureLogin Client Utility.

4.2.4 Testing the Multiple Logins

- 1 Launch the application for which you added multiple logins.
- 2 Select the functionality you want to access. The login selection dialog box is displayed.
- 3 Select the appropriate login credential set.
- 4 Click *OK*. Novell SecureLogin enters the credentials and you are automatically logged in to the application.

Changing Preferences

5

The Preferences allow you to customize Novell® SecureLogin. Use this option to customize Novell SecureLogin to function in the way you want it.

The Administrator can also set the Novell SecureLogin user preferences in the Administrative Management utility. Each preferences has a default value until an alternative value is specified.

NOTE: The preferences value set by you at the user object level overrides all higher level object values.

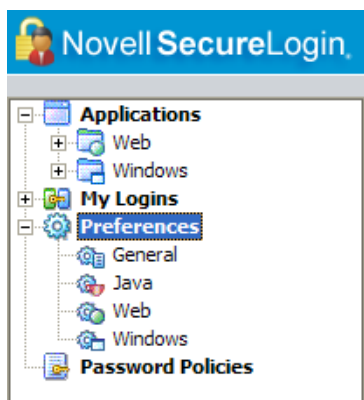
The list of preferences is a subset of the preferences that the administrator controls through the Administrative Management utility. If the Administrator has disabled a setting, you cannot use it or change it on your workstation.

- ♦ [Section 5.1, “Viewing and Changing the Preferences,” on page 33](#)
- ♦ [Section 5.2, “General Preference, Definitions, and Values,” on page 34](#)
- ♦ [Section 5.3, “Java Preference, Definitions, and Values,” on page 36](#)
- ♦ [Section 5.4, “Web Preferences, Definitions, and Values,” on page 37](#)
- ♦ [Section 5.5, “Windows Preferences, Definitions, and Values,” on page 39](#)

5.1 Viewing and Changing the Preferences

- 1 Click *Preference*. The preference properties table is displayed.
- 2 Select the setting you want to customize. You can change the preferences for the following settings:
 - ♦ [“General Preference, Definitions, and Values” on page 34](#)
 - ♦ [“Java Preference, Definitions, and Values” on page 36](#)
 - ♦ [“Web Preferences, Definitions, and Values” on page 37](#)
 - ♦ [“Windows Preferences, Definitions, and Values” on page 39](#)
- 3 From the drop-down list in the *Value* column, select the appropriate value.
- 4 Click *OK*.
- 5 Click *Yes* to save the settings and exit.

Figure 5-1 *The User Preferences*



5.2 General Preference, Definitions, and Values

Table 5-1 *The General Preferences Properties Table*

Preference	Possible Values	Description	Default Value
<i>Detect incorrect passwords</i>	<i>Yes/No/Default</i>	<p>Predefined applications generally include commands to respond to incorrect password dialogs. This preference enables SecureLogin to respond to incorrect passwords for web applications.</p> <p>If this option is set to <i>Yes</i> or <i>Default</i>, incorrect passwords for Web applications are detected.</p> <p>If this option is set to <i>No</i>, incorrect passwords for Web applications are not detected.</p> <p>This preference is available in both the Novell SecureLogin Client Utility and the administrative management utilities (iManager, SLManager, and MMC snap-ins).</p>	The default value is <i>Yes</i> .
<i>Enable cache file</i>	<i>Yes/No/Default</i>	<p>This preference controls creating and updating of a SecureLogin cache file on the local workstation. The cache file stores all user configuration data; local and inherited.</p> <p>Set this option to <i>Yes</i> for mobile users.</p> <p>If this option is set to <i>No</i>, you cannot store files locally or you might have some conflicts with organizational security policy.</p> <p>If this option is set to <i>Default</i>, Novell SecureLogin behaves as if it is set to <i>Yes</i>.</p> <p>This preference is available in both the Novell SecureLogin Client Utility and the administrative management utilities (iManager, SLManager, and MMC snap-ins).</p>	The default value is <i>Yes</i> .

Preference	Possible Values	Description	Default Value
<i>Enter API license key(s)</i>	Specify API license key(s)	Specify the API license key(s) provided by Novell SecureLogin to activate the API functionality for an application. You can add more than one API license key.	Specify the API license key
<i>Password protect the system tray icon</i>	Yes/No/Default	This preference restricts the users from accessing the Novell SecureLogin icon menu option (from the notification area (system tray) without their network login password. If this option is set to <i>Yes</i> , the Novell SecureLogin icon on the notification area (system tray) is password protected. If this option is set to <i>No</i> or <i>Default</i> , the Novell SecureLogin icon on the notification area (system tray) is not password protected. This preference is available in both the Novell SecureLogin Client Utility and the administrative management utilities (iManager, SLManager, and MMC snap-ins).	The default value is <i>No</i> .
<i>Provide API Access</i>	Yes/No/Default	This preference controls the API functionality use. If this option is set to <i>Yes</i> , the API access is enabled. If this option is set to <i>No</i> or <i>Default</i> , the API access is disabled. This preference is available in both the Novell SecureLogin Client Utility and the administrative management utilities (iManager, SLManager, and MMC snap-ins).	The default value is <i>No</i> .
<i>Set the cache refresh interval (in minutes)</i>	5	This preference defines the time in minutes the synchronization of user data and directory on the local workstation. However, depending on the network traffic and the number of users the interval can be set between 240 minutes and 480 minutes (four and eight hours). This preference is available in both the Novell SecureLogin Client Utility and the administrative management utilities (iManager, SLManager, and MMC snap-ins).	The default value is set to 5 minutes.

5.3 Java Preference, Definitions, and Values

Table 5-2 *The Java Preferences Properties Table*

Preference	Possible Values	Description	Default Value
<i>Add application prompts for Java applications</i>	<i>Yes/No/Default</i>	<p>This preference controls whether Novell SecureLogin detects Java application.</p> <p>If the preference is set to <i>Yes</i> or <i>Default</i>, as soon as Novell SecureLogin detects a Java application login page, it prompts the user to record it.</p> <p>If this option is set to <i>No</i>, this process never occurs, only Java predefined applications are prompted and supported.</p> <p>This preference is available in both the Novell SecureLogin Client Utility and all the administrative management utilities (iManager, SLManager, and MMC snap-ins).</p>	The default value is <i>No</i> .
<i>Allow single sign-on to Java applications</i>	<i>Yes/No/Default</i>	<p>This preference controls whether Novell SecureLogin allows single sign-on for Java applications.</p> <p>If the preference is set to <i>Yes</i> or <i>Default</i>, as soon as Novell SecureLogin detects a Java application login page, it prompts the user to enable it for single sign-on.</p> <p>If this option is set to <i>No</i>, Java applications are not enabled for single sign-on.</p> <p>This preference is available in both the Novell SecureLogin Client Utility and all the administrative management utilities (iManager, SLManager, and MMC snap-ins).</p>	The default value is <i>Yes</i> .

5.4 Web Preferences, Definitions, and Values

Table 5-3 *The Web Preferences Properties Table*

Preference	Possible Values	Description	Default Value
<i>Add application prompts for Internet Explorer</i>	<i>Yes/No/Default</i>	<p>This preference controls the display of the Web login detection wizard and confirmation dialog box when a Web application is detected and recognized by Internet Explorer.</p> <p>If you select <i>Yes</i> or <i>Default</i>, the specified credentials are saved and the application is enabled for single sign-on.</p> <p>If you select <i>No</i>, Novell SecureLogin skips enabling the application for single sign-on on this instance. You are prompted to enable the application when you launch it the next time.</p> <p>This preference is available in both the Novell SecureLogin Client Utility and all the administrative management utilities (iManager, SLManager, and MMC snap-ins).</p>	The default value is <i>Yes</i> .
<i>Add application prompts for Mozilla Firefox</i>	<i>Yes/No/Default</i>	<p>This preference controls the display of Web login detection wizard and confirmation dialog box when a Web application is detected and recognized by Mozilla Firefox.</p> <p>If you select <i>Yes</i> or <i>Default</i> the specified credentials are saved and the application is enabled for single sign-on.</p> <p>If you select <i>No</i>, Novell SecureLogin skips enabling the application for single sign-on on this instance. You are prompted to enable the application when you launch it the next time.</p> <p>This preference is available in both the Novell SecureLogin Client Utility and all the administrative management utilities (iManager, SLManager, and MMC snap-ins).</p>	The default value is <i>Yes</i> .

Preference	Possible Values	Description	Default Value
<i>Allow single sign-on to Internet Explorer</i>	<i>Yes/No/Default</i>	<p>This preference defines single sign-on access to Web application using Internet Explorer.</p> <p>If you select <i>Yes</i> or <i>Default</i> the specified credentials are saved and the application is enabled for single sign-on.</p> <p>If you select <i>No</i>, Novell SecureLogin skips enabling the application for single sign-on on this instance. You are prompted to enable the application when you launch it the next time.</p> <p>This preference is available in both the Novell SecureLogin Client Utility and all the administrative management utilities (iManager, SLManager, and MMC snap-ins).</p>	The default value is <i>Yes</i> .
<i>Allow single sign-on Mozilla Firefox</i>	<i>Yes/No/Default</i>	<p>This preference defines single sign-on access to Web application using Mozilla Firefox.</p> <p>If you select <i>Yes</i> or <i>Default</i> the specified credentials are saved and the application is enabled for single sign-on.</p> <p>If you select <i>No</i>, Novell SecureLogin skips enabling the application for single sign-on on this instance. You are prompted to enable the application when you launch it the next time.</p> <p>This preference is available in both the Novell SecureLogin Client Utility and all the administrative management utilities (iManager, SLManager, and MMC snap-ins).</p>	The default value is <i>Yes</i> .

5.5 Windows Preferences, Definitions, and Values

Table 5-4 *The Windows Preferences Properties Table*

Preference	Possible Values	Description	Default Value
<i>Add application prompts for Windows applications</i>	<i>Yes/No/Default</i>	<p>This preference controls the display of a Windows login detection and confirmation message when a Windows application is detected and recognized.</p> <p>If you select <i>Yes</i> or <i>Default</i>, the specified credentials are saved and the application is enabled for single sign-on.</p> <p>If you select <i>No</i>, Novell SecureLogin skips enabling the application for single sign-on on this instance. You are prompted to enable the application when you launch it the next time.</p> <p>This preference is available in both the Novell SecureLogin Client Utility and all the administrative management utilities (iManager, SLManger, and MMC snap-ins).</p>	The default value is <i>Yes</i> .
<i>Allow single sign-on to Windows applications</i>	<i>Yes/No/Default</i>	<p>This preference controls the display of Windows login detection wizard and confirmation dialog box when a Windows application is detected and recognized by Mozilla Firefox.</p> <p>If you select <i>Yes</i> or <i>Default</i> the specified credentials are saved and the application is enabled for single sign-on.</p> <p>If you select <i>No</i>, Novell SecureLogin skips enabling the application for single sign-on on this instance. You are prompted to enable the application when you launch it the next time.</p> <p>This preference is available in both the Novell SecureLogin Client Utility and all the administrative management utilities (iManager, SLManger, and MMC snap-ins).</p>	The default value is <i>Yes</i> .

Managing Your Passwords


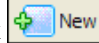
6

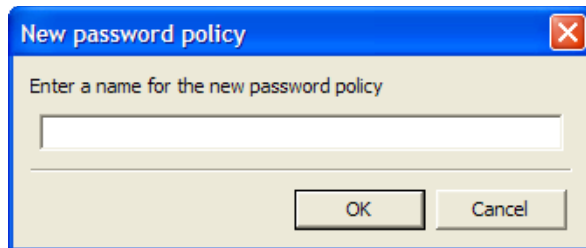
Novell® SecureLogin provides the password policy functionality to enable you to effectively and efficiently manage your password.

Organizations and applications often have rules about the content of passwords, such as the required number of characters and type of characters. The *Password Policies* option in Novell SecureLogin Novell SecureLogin Client Utility provides functionality to create and enforce these password rules through a Password policy, and apply this policy to one or more application logins.

- ♦ [Section 6.1, “Creating a Password Policy,” on page 41](#)
- ♦ [Section 6.2, “Editing a Password Policy,” on page 45](#)
- ♦ [Section 6.3, “Deleting a Password Policy,” on page 46](#)

6.1 Creating a Password Policy

- 1 Double-click the Novell SecureLogin  icon in the notification area.
- 2 Click *Password Policies*, then click . The New Password Policy dialog box is displayed.



- 3 Specify a name for your password policy, then click *OK*.
You have now successfully created a new password policy, but you need to set your preferences for the password policy. These preferences are unique to you and are enforced on your workstation.
- 4 In the *Password Policies* navigation area, select the password policy you want to edit.
- 5 You can view and change the following settings:

Policy	Value To Be provided	Description
<i>Minimum length</i>	Whole number	Defines the minimum length of the password; that is, the number of characters required for the password.
<i>Maximum length</i>	Whole number	Defines the maximum length of the password; that is, the maximum number of characters allowed in password.
<i>Minimum punctuation characters</i>	Punctuation characters	Defines the minimum number of punctuation characters allowed in a password.
<i>Maximum punctuation characters</i>	Punctuation characters	Defines the maximum number of punctuation characters allowed in a password.
<i>Minimum uppercase characters</i>	Whole number	Defines the minimum number of uppercase characters allowed in a password.
<i>Maximum uppercase characters</i>	Whole number	Defines the maximum number of uppercase characters allowed in a password.
<i>Minimum lowercase characters</i>	Whole number	Defines the minimum number of lowercase characters allowed in a password.
<i>Maximum lowercase characters</i>	Whole number	Defines the maximum number of lowercase characters allowed in a password.
<i>Minimum numeric characters</i>	Whole number	Defines the minimum number of numeric characters allowed in a password.
<i>Maximum numeric characters</i>	Whole number	Defines the maximum number of numeric characters allowed in a password.
<i>Disallow repeat characters</i>	<i>No/Yes/Yes, case insensitive</i>	<p>Disallows the use of repeated characters, or the use of the same successive characters.</p> <p>If this option is set to <i>No</i>, characters can be repeated. This is the default value.</p> <p>If this option is set to <i>Yes</i>, same alphabetic characters in a different case are considered as different characters. For example, A and a are different.</p> <p>If this option is set to <i>Yes, case insensitive</i>, the successive use of the same alphabetic characters in a different case is not allowed.</p>

Policy	Value To Be provided	Description
<i>Disallow duplicate characters</i>	<i>No/Yes/Yes, case insensitive</i>	<p>Disallows the use of the same non-successive characters.</p> <p>If this option is set to <i>No</i>, duplicate characters are allowed. This is the default value.</p> <p>If this option is set to <i>Yes</i>, the same alphabetic characters in a different case are considered as different characters. For example, A (uppercase) and a (lowercase) are different.</p> <p>If this option is set to <i>Yes, case insensitive</i>, duplication of the same alphabetic characters in a different case is not allowed.</p>
<i>Disallow sequential characters</i>	<i>No/Yes/Yes, case insensitive</i>	<p>Disallows the use of successive characters in alphabetical order.</p> <p>If this option is set to <i>No</i>, sequential characters are allowed. This is the default value.</p> <p>If this option is set to <i>Yes</i>, sequential characters in a different case are considered as non-sequential. For example, a and B are non-sequential.</p> <p>If this option is set to <i>Yes, case insensitive</i>, sequential characters in different cases are disallowed.</p>
<i>Begin with an uppercase character</i>	<i>No/Yes</i>	<p>Enforces the use of an uppercase alphabetic character as the beginning character of a password.</p> <p>The default value is <i>No</i>.</p> <p>If this option is set to <i>Yes</i>, all other policies that indicate that a password must begin with a particular character or in a specific manner are disabled.</p> <hr/> <p>IMPORTANT: Only one type of character can be designated as the first value of a password.</p> <hr/>
<i>End with an uppercase character</i>	<i>No/Yes</i>	<p>Enforces the use of an uppercase letter at the end of a password.</p> <p>The default value is <i>No</i>.</p> <p>If this option is set to <i>Yes</i>, all other policies that indicate that a password must end with a particular character or in a specific manner are disabled.</p>


Policy	Value To Be provided	Description
<i>Prohibited characters</i>	Keyboard characters	<p>Defines a list of characters that cannot be used in a password.</p> <hr/> <p>NOTE: There is no need of a separator in the list of prohibited characters. For example, @#\$%&*</p> <hr/>
<i>Begin with any Alpha character</i>	No/Yes	<p>Enforces the use of an alphabetic character at the beginning of a password.</p> <p>The default value is No.</p> <p>If this option is set to Yes, it automatically disables all other policies that specify what the first character of the password should be.</p>
<i>Begin with any number</i>	No/Yes	<p>Enforces the use of a numeric character as the first character of the password.</p> <p>The default value is No.</p> <p>If this option is set to Yes, it automatically disables all other policies that specify what the first character of the password should be.</p>
<i>Begin with any symbol</i>	No/Yes	<p>Enforces the use of a symbol character as the first character of the password.</p> <p>The default value is No.</p> <p>If this option is set to Yes, it automatically disables all other policies that specify what the first character of the password should be.</p>
<i>End with any Alpha character</i>	No/Yes	<p>Enforces the use of an alphabetic character as the last character of the password.</p> <p>The default value is No.</p> <p>If this option is set to Yes, it automatically disables all other policies that specify what the password should end with.</p>
<i>End with any number</i>	No/Yes	<p>Enforces the use of a numeric character as the last character of the password.</p> <p>The default value is No.</p> <p>If this option is set to Yes, it automatically disables all other policies that specify what the password should end with.</p>

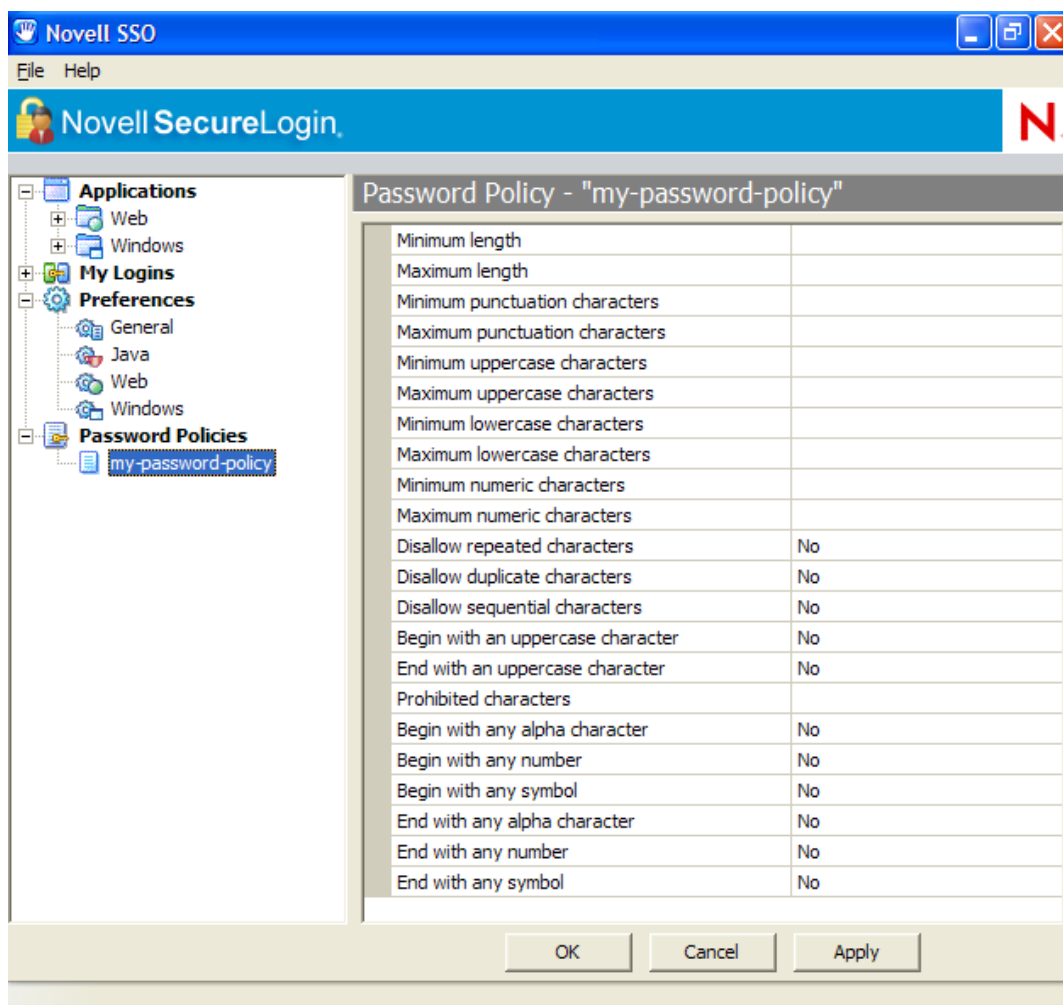
Policy	Value To Be provided	Description
<i>End with any symbol</i>	<i>No/Yes</i>	Enforces the use of a symbol character as the last character of the password. The default value is <i>No</i> . If this option is set to <i>Yes</i> , it automatically disables all other policies that specify what the password should end with.

6 Click *Apply*. The settings are saved.

6.2 Editing a Password Policy


To edit an existing password policy settings:

- 1 Double-click the Novell SecureLogin  icon in the notification area.
- 2 In the *Password Policies* navigation area, select the password policy you want to edit. The settings of the selected password policy are displayed.



- 3 Select the setting you want to change.
- 4 In the adjacent column, change the value of the settings as required. Refer to [Section 6.1, “Creating a Password Policy,” on page 41](#) for the setting options and their descriptions.
- 5 Click *Apply*.

6.3 Deleting a Password Policy

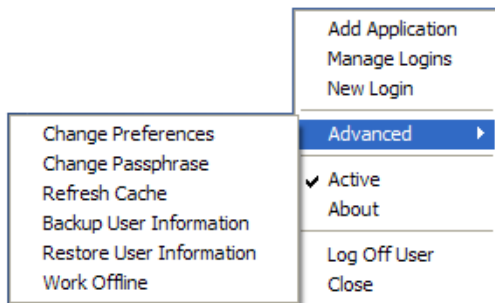
- 1 Double-click the Novell SecureLogin  icon in the notification area.
- 2 In the *Password Policies* navigation area, right-click the password policy you want to delete, then click *Delete*.

Managing Information Cache

7

Use the *Advanced* menu to change your information cache to refresh the cache, back up and restore information, and work online or offline.

Figure 7-1 The Advanced Menu



- ♦ [Section 7.1, “Refreshing the Cache,” on page 47](#)
- ♦ [Section 7.2, “Backing Up User Information,” on page 47](#)
- ♦ [Section 7.3, “Restoring User Information,” on page 49](#)
- ♦ [Section 7.4, “Working Online and Working Offline,” on page 51](#)


7.1 Refreshing the Cache

The Novell SecureLogin cache is encrypted local copy of Novell SecureLogin data. It allows users who are not connected to the network, for example, if they are working offline or using a laptop, to continue using Novell SecureLogin even if the directory is unavailable.

By default, a cache file is created on the workstation as part of the Novell SecureLogin installation. The cache file stores your data locally and is synchronized regularly with your data in the directory.

The directory and workstation caches are synchronized regularly, by default every five minutes.

To refresh the cache manually:

- 1 Right-click the Novell SecureLogin  icon in the notification area, then select *Advanced > Refresh Cache*.

The cache is refreshed and it is synchronized with the cache in the directory.

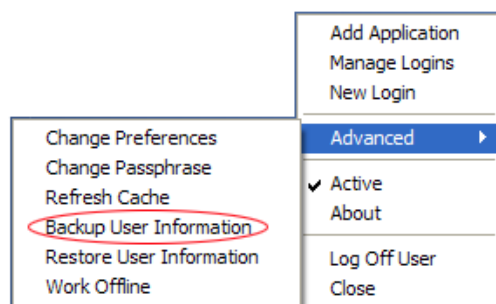
7.2 Backing Up User Information

Because SecureLogin data is stored in the directory, existing directory backups also back up Novell SecureLogin data. In addition, the local cache synchronizes with the directory for further redundancy of data.

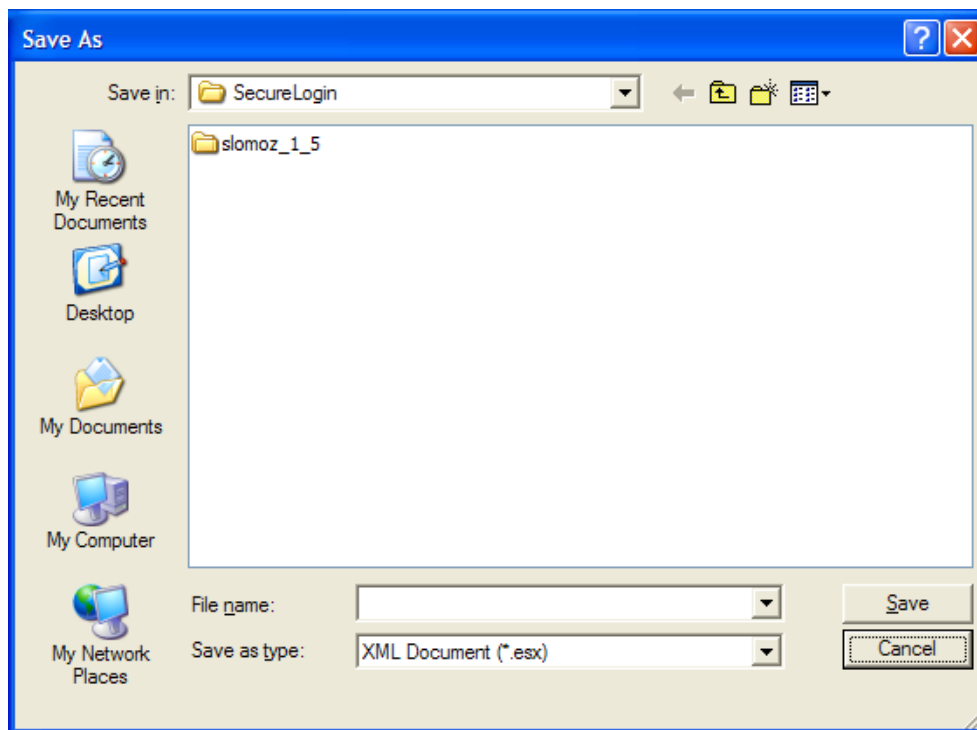
Backing up or restoring by using the SecureLogin menu options is typically performed by users who have been disconnected from the network for long periods of time, such as weeks or months.

To create a backup file:

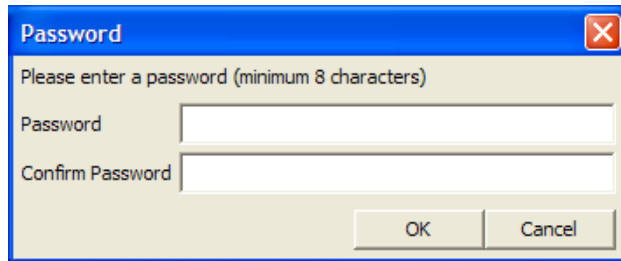
- 1 In the notification area, right-click the Novell SecureLogin icon, then select *Advanced > Backup User Information*. The Save Settings dialog box is displayed.



- 2 Select a folder where you want to store the backup file.
The file can be stored in any location.



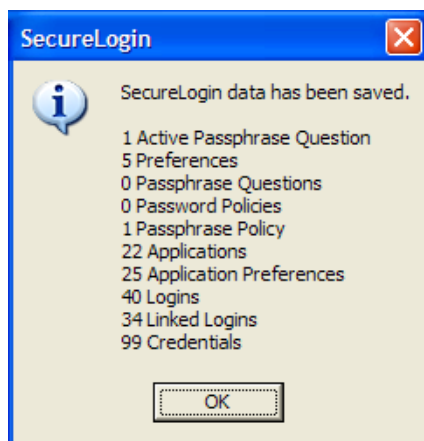
- 3 In the *File name* field, specify a name for the backup file.
- 4 Click *Save*. The Password dialog box is displayed.



5 In the *Password* field, specify a password.

6 Click *OK*.

The encrypted and password-protected backup file is saved, and a confirmation message appears.



7 Click *OK*.

7.3 Restoring User Information

IMPORTANT: Before restoring the backup file, you must delete the cache file on the workstation.

7.3.1 Deleting the Workstation Cache

1 Right-click the Windows *Start* button, then click *Explore*.

2 Browse to the following directory:

C:\Documents and Settings\[user]\Application Data\SecureLogin\Cache


Ensure that you have selected *Show hidden files and folders* in the Windows Folder Options dialog box.

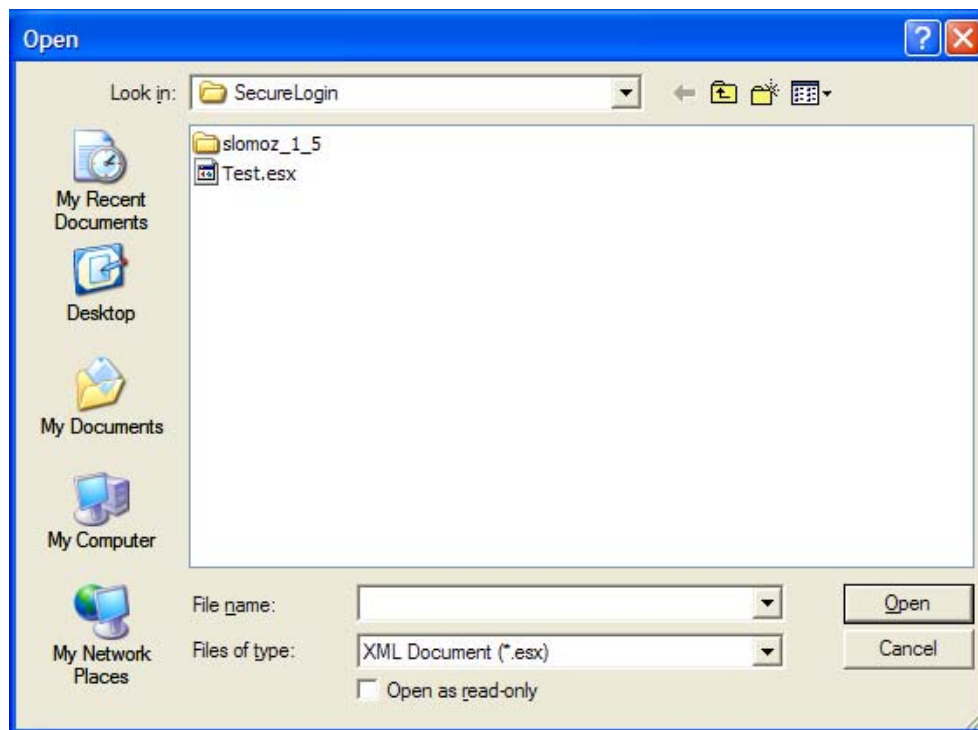
3 Delete the cache directory.

4 Close Windows Explorer.

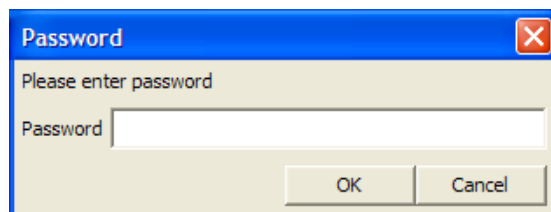
7.3.2 Restoring the Backup File

To restore the user information from the local cache backup file:

- 1 In the notification area, right-click the Novell SecureLogin  icon, then select *Advanced > Restore User Information*. The Load Settings dialog box is displayed.



- 2 Select the backup file.
- 3 Click *Open*. The Password dialog box is displayed.



- 4 In the *Password* field, specify the password.
- 5 Click *OK*.

A message appears, confirming that cache data has been loaded to the local workstation cache.



6 Click *OK*.

7.4 Working Online and Working Offline

The *Work Offline* option stops the synchronization process with the directory, so Novell SecureLogin relies only on its local cache file or equivalent smart card.

If this option is set to *Yes* in the Administrative Management utility by the administrator, the *Work Offline* option is not displayed on the notification area icon.

Novell SecureLogin detects if it is online or offline and adapts its behavior accordingly.

If this option is set to either *No* or *Default*, the *Work Offline* option is displayed and accessible in on the notification area icon.

To work offline:

- 1 In the notification area, right-click the Novell SecureLogin  icon, then select *Advanced > Work Offline*.

The synchronization process with the directory stops.

To work online:

- 1 In the notification area, right-click the Novell SecureLogin  icon, then select *Advanced > Work Online*.

You are now working online and the synchronization with the directory is active.

Managing the Passphrase

8

Passphrases are an important security component in the implementation of Novell® SecureLogin. Passphrases are unique question and answer combinations created to verify and authenticate the identity of a user. In a directory environment, you can create passphrase questions for users. Users can select one of these questions and provide an answer for it. You can also permit users to provide a question of their choice and the answer for it.

Passphrases protect user credentials from unauthorized use. For example, in a Microsoft Active Directory* environment, you can potentially log in to the network by resetting the user's network password.

However, this cannot happen when you are using Novell SecureLogin. If someone other than the actual users tries to reset the network password, Novell SecureLogin triggers the passphrase question. The user must provide the correct answer before successfully logging in. Even an administrator cannot access the user's single sign-on-enabled applications without knowing the user's passphrase answer.

NOTE: In a Microsoft Windows Vista environment, when you log in to Novell SecureLogin in an offline mode with an incorrect password, you are prompted to provide the passphrase answer. If an incorrect passphrase answer is specified, you are prompted to retry the authentication.

However, if you again provide a wrong password, instead of seeing a prompt for the passphrase answer, you are prompted to specify the password (that is, instead of the passphrase dialog box, the password dialog box is displayed).

Close and relaunch Novell SecureLogin to be prompted for the password first, then prompted for the passphrase answer if the incorrect password is specified.

8.1 Creating a Passphrase

The first time log in to your workstation and launch Novell® SecureLogin, you are prompted to set up your passphrase question and answer.

If you have installed Novell SecureLogin in LDAP GINA mode with eDirectory, Novell SecureLogin does not work while setting a passphrase for a new user if the eDirectory user's fully distinguished name (FDN) has 128 characters or more.

- 1 The Passphrase Setup dialog box is displayed.



If your administrator has defined a set to question, you must select one of the questions and specify your answer.

- 2 In the *Enter a question* field, select or specify a passphrase question.
- 3 In the *Enter the answer* field, specify the new passphrase answer.
- 4 In the *Confirm the answer* field, retype the new passphrase answer.
- 5 Click *OK*. The changes are saved.

NOTE: You are re-prompted for the passphrase answer in the following situations:

- ♦ If your administrator has changed the *Security* preference from *Hidden* to *Yes*, you are promoted to re-enter your passphrase question and answer.
- ♦ If you have logged in through the *Workstation only* when;
 - ♦ The eDirectory™ and workstation passwords are different and
 - ♦ HKLM/Software/Protocom/ SecureLogin\TryRegcredInOffline is set to 1

Specify your passphrase again (after the initial set up) to continue with the login.

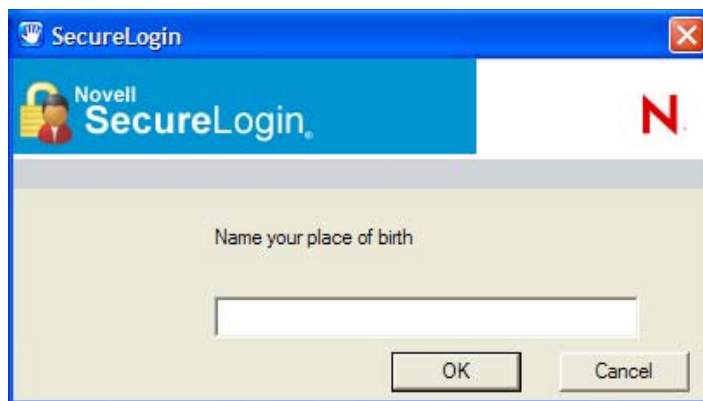
8.2 Changing a Passphrase

Passphrases protect your credentials from unauthorized use. For example, in an Active Directory environment, you can potentially log in to the network by resetting the user's network password. You can avoid such occurrences by using a passphrase.

However, this cannot happen if you are using a Novell SecureLogin passphrase. If someone other than the actual user tries to reset the network, Novell SecureLogin triggers the passphrase question. The user must provide the correct answer before successfully logging in.

Even an administrator cannot access the user's single sign-on-enabled applications without knowing the user's passphrase answer.

- 1 Right-click the Novell SecureLogin icon in the notification area, then select *Advanced > Change Passphrase*. The Passphrase dialog box is displayed.



- 2 Specify the existing passphrase response in the field.
- 3 Click *OK*. The Passphrase Setup dialog box is displayed.



The image shows a Windows-style dialog box titled "Passphrase Setup". The title bar is blue with a close button (X) in the top right corner. Below the title bar, there is a blue header area containing the Novell SecureLogin logo on the left and a red "N" logo on the right. The main content area has a light beige background. It contains the following text and controls:

If you need to access your single sign-on details when you are not connected to the network or if your password is ever reset, SecureLogin will ask you a passphrase question. You must then enter your passphrase answer.

1. Select or enter a passphrase question.
2. Enter and confirm a passphrase answer.

Enter an obscure answer so that no one is likely to guess it.

Enter a question:

[Dropdown menu]

[Text input field]

Enter the answer:

[Text input field]

Confirm the answer:

[Text input field]

At the bottom, there are two buttons: "OK" and "Cancel".

- 4** In the *Enter a question field*, select or specify a passphrase question.
- 5** In the *Enter the answer field*, specify the new passphrase answer.
- 6** In the *Confirm the answer* field, retype the new passphrase answer.

The image shows a 'Passphrase Setup' dialog box with a blue title bar and a Novell SecureLogin logo. It contains instructions on how to set a passphrase, a list of two steps, and a warning to choose an obscure answer. Below this, there are input fields for 'Enter a question:' (a dropdown menu showing 'Who is your favorite poet?'), 'Enter the answer:' (a text field with asterisks), and 'Confirm the answer:' (another text field with asterisks). At the bottom are 'OK' and 'Cancel' buttons.

Passphrase Setup

Novell SecureLogin

If you need to access your single sign-on details when you are not connected to the network or if your password is ever reset, SecureLogin will ask you a passphrase question. You must then enter your passphrase answer.

1. Select or enter a passphrase question.
2. Enter and confirm a passphrase answer.

Enter an obscure answer so that no one is likely to guess it.

Enter a question:

Who is your favorite poet?


Who is your favorite poet?

Enter the answer:

Confirm the answer:

OK Cancel

7 Click *OK*. The changes are saved.

NOTE: If you do not have access to the Novell SecureLogin  icon in the notification area, you cannot change your passphrase answer. Your administrator has disabled access to the Novell SecureLogin icon in the notification area.
