

Novell Nsure™ SecureLogin

3.51.2

www.novell.com

USER GUIDE

April 08, 2005



Novell®

Legal Notices

Novell, Inc. makes no representations or warranties with respect to the contents or use of this documentation, and specifically disclaims any express or implied warranties of merchantability or fitness for any particular purpose. Further, Novell, Inc. reserves the right to revise this publication and to make changes to its content, at any time, without obligation to notify any person or entity of such revisions or changes.

Further, Novell, Inc. makes no representations or warranties with respect to any software, and specifically disclaims any express or implied warranties of merchantability or fitness for any particular purpose. Further, Novell, Inc. reserves the right to make changes to any and all parts of Novell software, at any time, without any obligation to notify any person or entity of such changes.

You may not use, export, or re-export this product in violation of any applicable laws or regulations including, without limitation, U.S. export regulations or the laws of the country in which you reside.

Copyright © 2005 Novell, Inc. All rights reserved. No part of this publication may be reproduced, photocopied, stored on a retrieval system, or transmitted without the express written consent of the publisher.

Novell, Inc. has intellectual property rights relating to technology embodied in the product that is described in this document. In particular, and without limitation, these intellectual property rights may include one or more of the U.S. patents listed at <http://www.novell.com/company/legal/patents/> and one or more additional patents or pending patent applications in the U.S. and in other countries.

Novell, Inc.
404 Wyman Street, Suite 500
Waltham, MA 02451
U.S.A.

www.novell.com

Nsure SecureLogin 3.51.2 User Guide

April 08, 2005

Online Documentation: To access the online documentation for this and other Novell products, and to get updates, see www.novell.com/documentation.

Novell Trademarks

ConsoleOne is a registered trademark of Novell, Inc. in the United States and other countries.

Novell is a registered trademark of Novell, Inc. in the United States and other countries.

Nsure is a trademark of Novell, Inc.

SUSE is a registered trademark of SUSE AG, a Novell business.

Third-Party Materials

All third-party trademarks are the property of their respective owners.

Contents

- About This Guide** **7**

- 1 Overview** **9**

- 2 Accessing SecureLogin** **11**

- 3 Automatically Logging In to Applications** **13**
 - Responding to Pop-Up Prompts 13
 - Prompts for Windows Applications 13
 - Prompts for Web Pages. 13
 - Prompts for Applications That Have Prebuilt Scripts 14
 - Enabling Applications for Single Sign-On. 15
 - Enabling Applications That Have Prebuilt Scripts. 15
 - Enabling Applications That Don't Have Prebuilt Scripts 16
 - Enabling a Windows Application 17
 - Enabling a Web Application. 20
 - Enabling a Java Application. 21

- 4 User IDs** **27**
 - Creating a User ID 27

- 5 Changing Settings** **31**
 - Disabling the Workstation's Cache 31
 - Clearing the Cache 32
 - Temporarily Disabling SecureLogin 32
 - Changing Your Passphrase 33

About This Guide

The purpose of this *User Guide* is to help you automatically log in to Windows*, Web, and Java* applications that require login credentials, such as your username and password.

This *Guide* assumes that SecureLogin is already installed on your workstation. If it isn't installed, see the [Nsure SecureLogin 3.51.2 Installation Guide](#).

To find out how Novell® SecureLogin can help you, see [Chapter 1, “Overview,” on page 9](#).

To launch or run SecureLogin, see [Chapter 2, “Accessing SecureLogin,” on page 11](#).

To set up an application so that SecureLogin automatically logs you in to it, see [Chapter 3, “Automatically Logging In to Applications,” on page 13](#)

To create a set of credentials to log you in to an application, see [Chapter 4, “User IDs,” on page 27](#).

To change SecureLogin settings, see [Chapter 5, “Changing Settings,” on page 31](#).

Documentation Conventions

In Novell documentation, a greater-than symbol (>) is used to separate actions within a step and items in a cross-reference path.

A trademark symbol (®, ™, etc.) denotes a Novell trademark. An asterisk (*) denotes a third-party trademark.

When a single pathname can be written with a backslash for some platforms or a forward slash for other platforms, the pathname is presented with a backslash. Users of platforms that require a forward slash, such as Linux or UNIX, should use forward slashes as required by your software.

User Comments

We want to hear your comments and suggestions about this manual and the other documentation included with this product. Please use the User Comment feature at the bottom of each page of the online documentation, or go to www.novell.com/documentation/feedback.html and enter your comments there.

Documentation Updates

For the most recent version of the *Nsure SecureLogin 3.51.2 User Guide*, see [SecureLogin \(http://www.novell.com/documentation\)](http://www.novell.com/documentation) at the Novell Documentation Web page.

Additional Documentation

This *User Guide* is part of a documentation set for SecureLogin 3.51.2. You can find additional information in the following:

- ◆ The Help system

Click the Help button in the SecureLogin dialog boxes.

- ◆ The [Nsure SecureLogin 3.51.2 Installation Guide](#) (installing SecureLogin, migrating secrets from earlier versions, and configuring SecureWorkstation)
- ◆ The [Nsure SecureLogin 3.51.2 Administration Guide](#) (tools and tasks to manage SecureLogin and configure terminal emulators)
- ◆ The [Nsure SecureLogin 3.51.2 Scripting Guide](#) (concepts concerning scripting, scripting commands, and example scripts for applications)
- ◆ The [Nsure SecureLogin 3.51.2 Configuration Guide for Terminal Emulation](#) (how to configure Terminal Launcher for selected terminal emulators)
- ◆ The [Nsure SecureLogin 3.51.2 Terminal Services Guide](#) (how to configure Citrix servers)

1

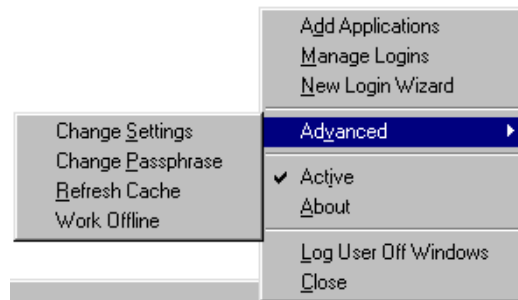
Overview

By default, the installation program places the Novell® SecureLogin icon on the task bar (system tray).



This icon is a shortcut to SecureLogin functionality on workstations. To use the shortcut:

- 1 Right-click the SecureLogin icon on the task bar.
- 2 Select the task that you want to complete.



For example, select Manage Logins, which opens SecureLogin's main window.

The following table provides information on the tasks:

Option	Description
Add Applications	Starts the Add Applications Wizard. Enables an application for single-sign on by creating a script that automates the login.
Manage Logins	Brings up SecureLogin's main window. Adds user IDs (login credentials), links user IDs to applications, manages password policies, and manages SecureLogin settings.
New Login Wizard	Enables you to create multiple single sign-ons or user IDs for an application. For example, if you have three accounts on the same application, SecureLogin manages the three sets of credentials. SecureLogin provides the option to select the preferred account when the application starts.
Advanced > Change Settings	Opens SecureLogin's main page, with the Settings tab selected.

Option	Description
Advanced > Change Passphrase	Enables you to change your passphrase question or passphrase answer. See "Changing Your Passphrase" on page 33 .
Advanced > Refresh Cache	Refreshes the local cache settings and updates with any changes made at the associated container or organizational unit level.
Advanced > Work Online/Offline	Toggles between SecureLogin's online and offline states. When you work offline, SecureLogin uses the local (secondary) cache rather than the directory. Not displayed in Standalone mode.
Active	Determines whether SecureLogin is enabled (active) or disabled.
About	Displays the SecureLogin version number and the status of the data stores. The primary data store is the directory. The secondary is the local cache.
Log User Off Windows	Enables you to shut down all programs, including SecureLogin, and log off from the workstation. Performs the same function as the Shut Down > Log Off option on the Windows Start menu.
Close	Shuts SecureLogin down.

2

Accessing SecureLogin

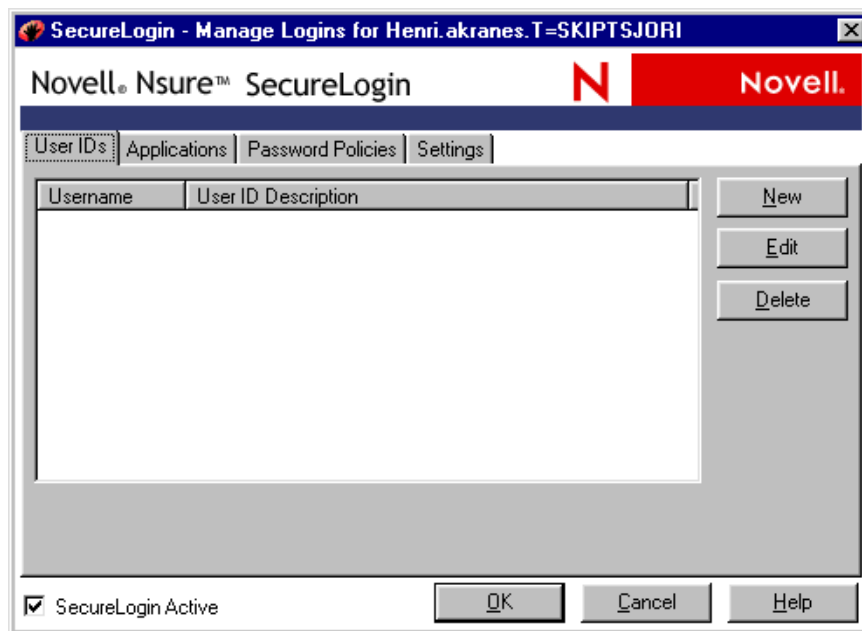
Novell® SecureLogin runs on your workstation. To access SecureLogin's main window, do one of the following:

- ◆ Click Start > Programs > Novell SecureLogin > Novell SecureLogin.
- ◆ Double-click the SecureLogin icon on the task bar.



- ◆ Right-click the SecureLogin icon on the task bar, then select Manage Logins.

The following figure illustrates SecureLogin's main window.



Changes made in SecureLogin's main window apply to the User object. They override any settings made at the directory container or organizational unit level. Use the main window for the following tasks:

- ◆ Configure standalone installs
- ◆ Test changes to settings
- ◆ Create or modify scripts for testing, before mass deployment
- ◆ Configure a specific user (for example, the Administrator) within a container, so that container settings don't apply

- ◆ Troubleshoot (for example, disable SecureLogin and then manually log in to an application)

3

Automatically Logging In to Applications

Novell® SecureLogin uses scripts to automatically log you in to Windows, Web, or Java applications. A script is a set of instructions. SecureLogin has some prebuilt scripts that you can use, or you can use the Add Applications Wizard to create new ones.

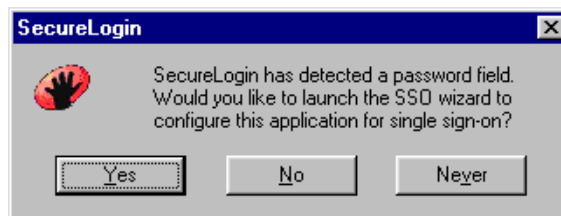
The Wizard captures and stores your login name (username), password, and any other information required for authentication. Scripts are stored in a local database on your workstation and in the directory.

Responding to Pop-Up Prompts

After SecureLogin is installed on your desktop, SecureLogin watches for applications that aren't enabled for single sign-on. Upon detecting such an application, SecureLogin prompts you to use a wizard to enable those applications for single sign-on and thereby simplify future logins.

Prompts for Windows Applications

After detecting a Windows login panel, SecureLogin displays the following dialog box. (If the application has a prebuilt script, the initial text varies.)

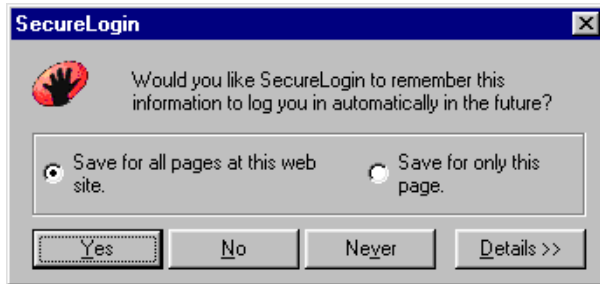


You can choose not to enable single sign-on for this application. If you select Never, SecureLogin generates a blank script for this application and doesn't prompt you again. If you select No, SecureLogin prompts you the next time that you launch the application.

If you click Yes, SecureLogin launches the Add Applications Wizard, which guides you through the setup and creates a script for the login panel. The next time you open the application, SecureLogin authenticates for you.

Prompts for Web Pages

When you navigate to a Web page that has a login field and then submit your login information, SecureLogin prompts you whether to enable single sign-on for the site, for only the current page, or not at all.

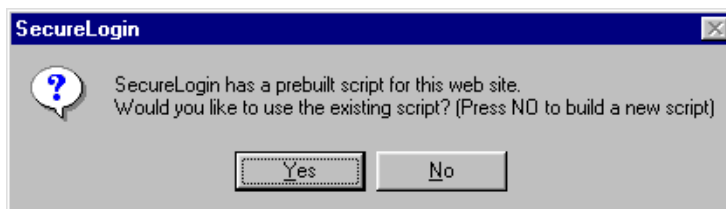


If you click Yes, SecureLogin extracts the login information from the Web page and stores it for future single sign-on authentication.

Option	Description
Save for All Pages at This Web Site	Saves the script against the base URL of the page (for example, mail.yahoo.com).
Save for Only This Page	Saves the script against the exact URL of the page (for example, http://login.yahoo.com/config/mail?.intl=au).
Yes	Creates a script, automatically reads the credentials entered into the browser, and stores the credentials against suitable variables. The next time the Web page is loaded, SecureLogin enters your credentials.
No	Doesn't create a script. The next time the Web page is loaded, SecureLogin displays the prompt again.
Never	Creates a blank script with no variables. The next time the Web page is loaded, you aren't automatically logged in or prompted to enable the Web page for single sign-on.
Details	Changes the URL that is saved with the script. Select a URL suggestion from the drop-down list or enter a URL.

Prompts for Applications That Have Prebuilt Scripts

When SecureLogin detects a login panel for an application that has a prebuilt script, SecureLogin prompts you with the option to implement that script. The following figure illustrates a prompt for a Web site:



To enable the script, click Yes, then enter the required credentials. SecureLogin logs you into the application whenever the application is launched.

To ignore the prompt, click No. The next time SecureLogin detects the application's login panel, SecureLogin displays this prompt again, unless you create a new script for the application.

Enabling Applications for Single Sign-On

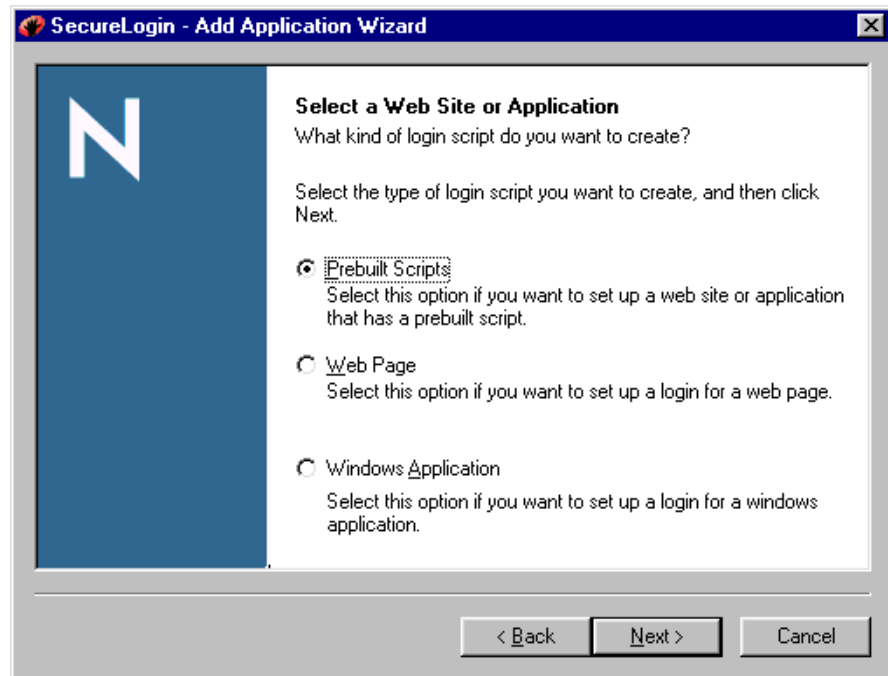
If a pop-up prompt doesn't appear when you launch a new application, use the Add Application Wizard to enable the application for single sign-on. The Wizard creates a script that captures your login credentials. The next time that you launch the application, SecureLogin uses the script to automatically log you in.

Enabling Applications That Have Prebuilt Scripts

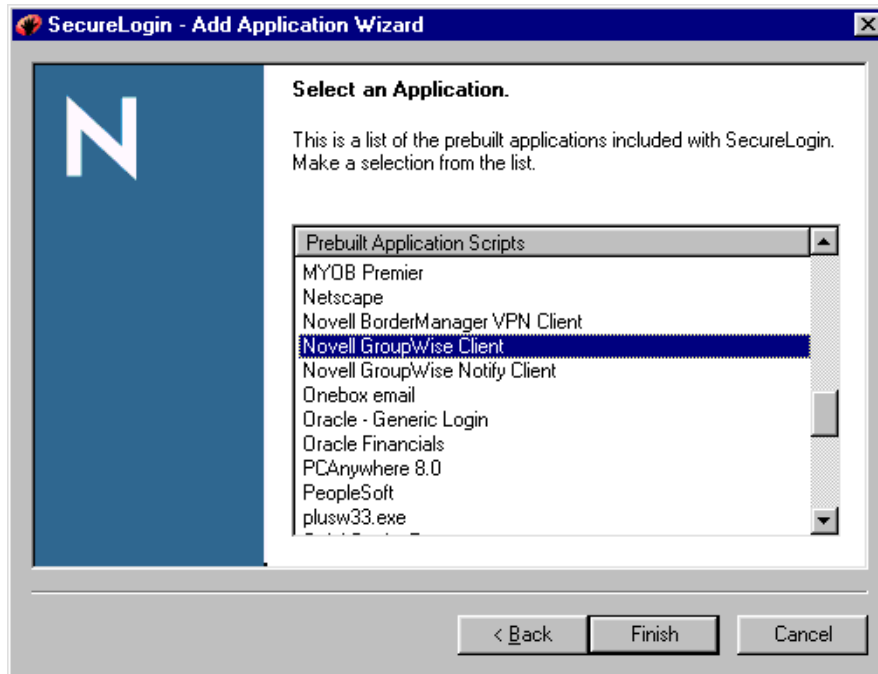
Scripts store certain login information so that it can be used again and again. To save you the time and trouble of setting up scripts, SecureLogin provides prebuilt scripts for many applications.

To enable an application that has a prebuilt script:

- 1 Right-click the SecureLogin icon on the task bar, then click Add Applications.
- 2 In the Welcome window, click Next.
- 3 Click Prebuilt Scripts, then click Next.

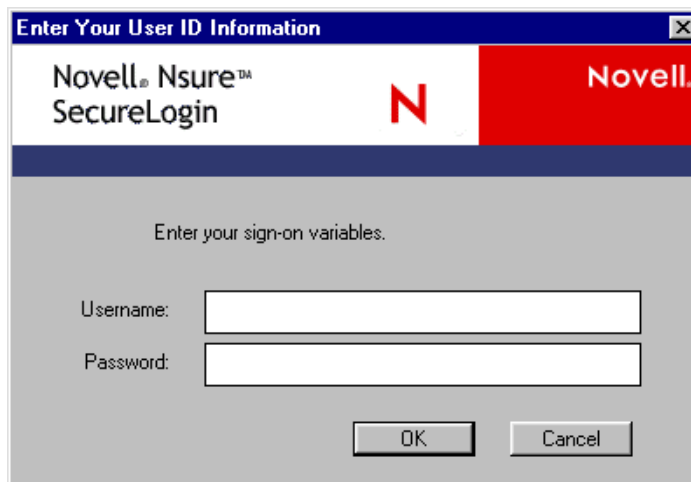


- 4 Select the application from the list, then click Finish.



5 Provide a login (user ID).

As the following figure illustrates, when you next launch the application, SecureLogin prompts you to enter login variables.



After you type the variables (typically, Username and Password) and click OK, SecureLogin saves this data and logs you in. This data is a user ID. For subsequent launches, SecureLogin uses this user ID to automatically log you in.

Enabling Applications That Don't Have Prebuilt Scripts

This section provides information on the following:

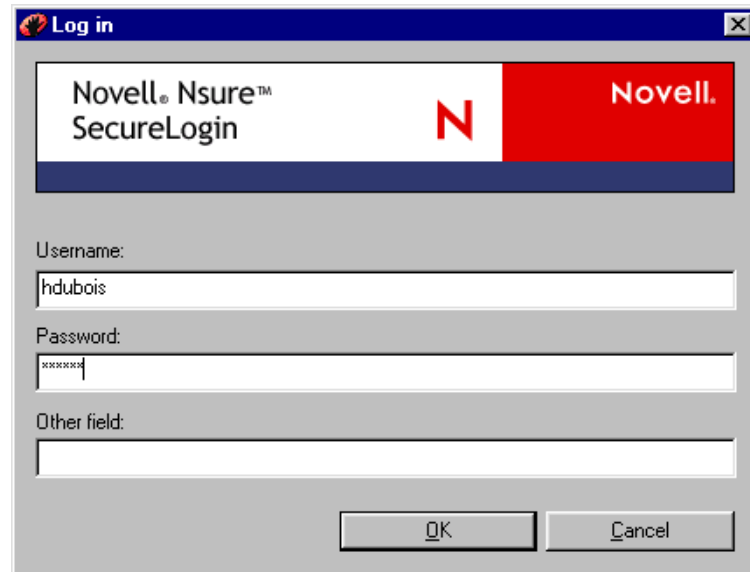
- ◆ [“Enabling a Windows Application” on page 17](#)
- ◆ [“Enabling a Web Application” on page 20](#)

- ♦ “Enabling a Java Application” on page 21

Enabling a Windows Application

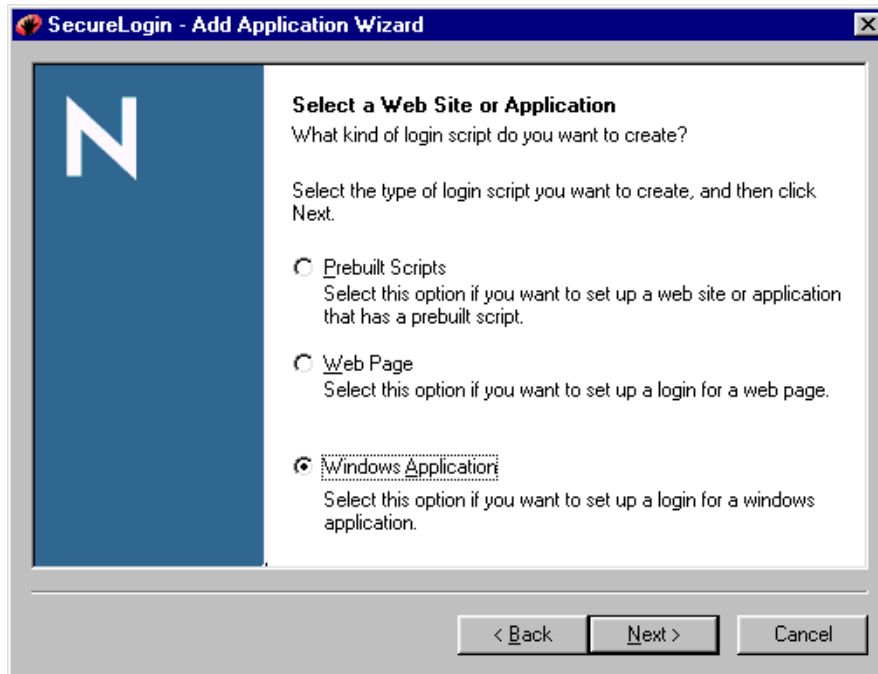
The following steps apply when SecureLogin doesn’t automatically detect a new application. If SecureLogin detects a new application and launches the Add Application Wizard, go to Step 6. For information on SecureLogin’s pop-up prompt, see “Responding to Pop-Up Prompts” on page 13.

- 1** Launch the application and drag the login panel to one side of the screen.
- 2** Type login information (for example, username and password), but don’t click OK, Next, or Finish.

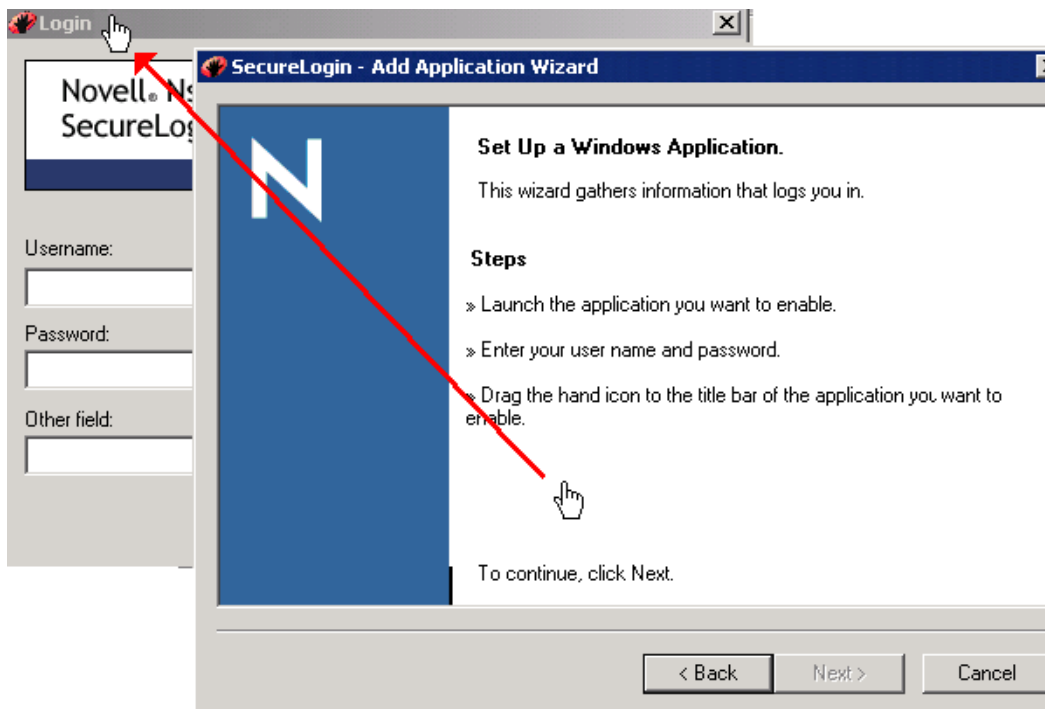


The login panel needs to remain so that SecureLogin can capture the information on the panel.

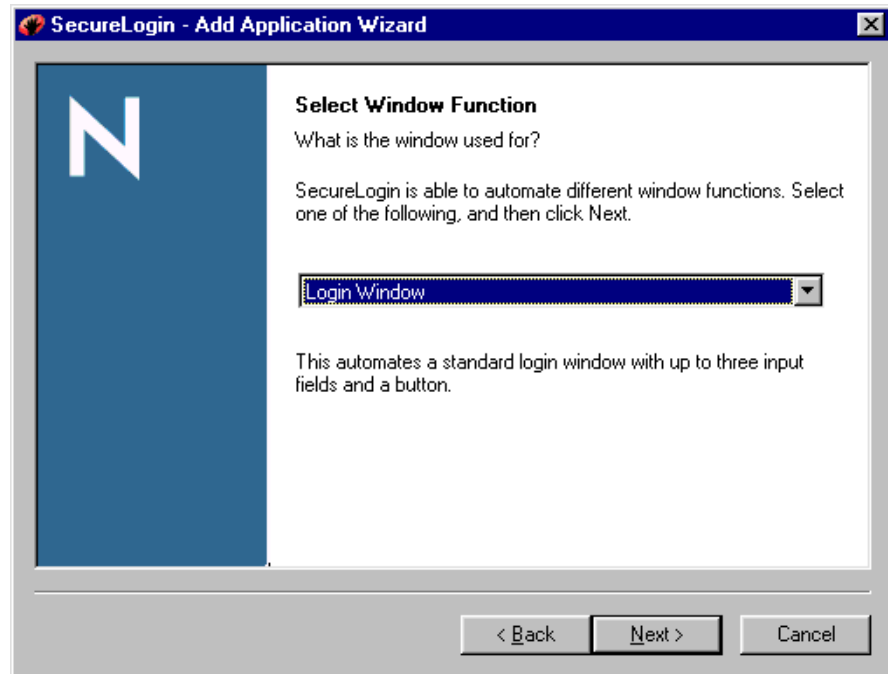
- 3** Right-click the SecureLogin icon on the task bar, then click Add Applications.
- 4** Click Next > Windows Application > Next.



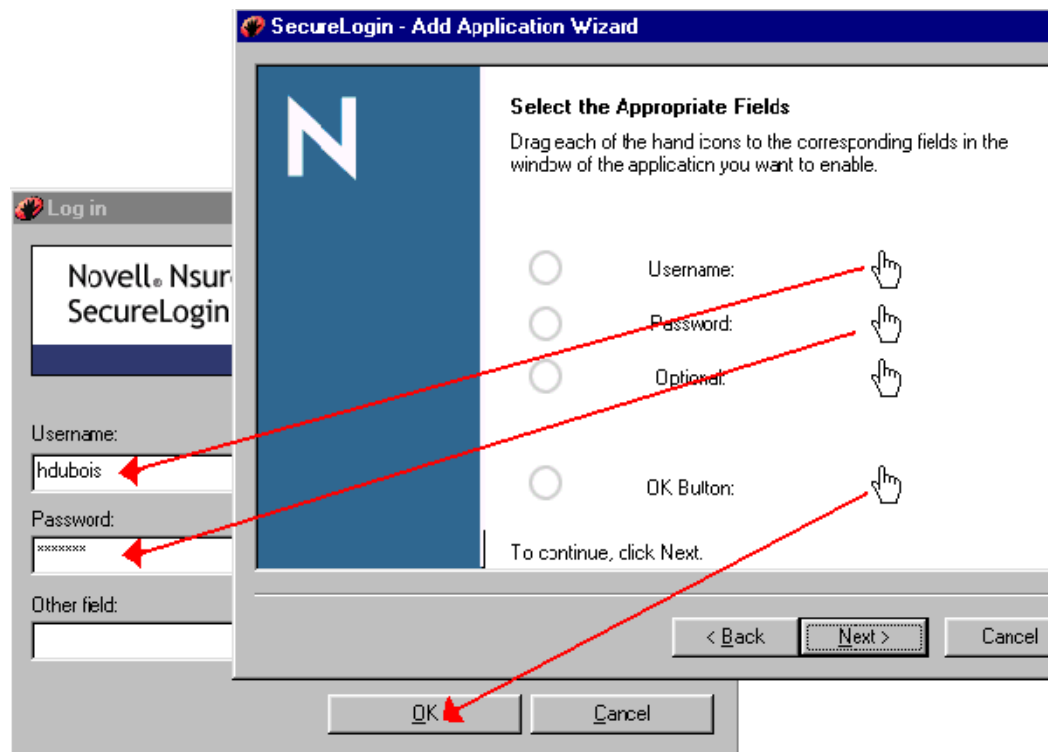
- 5 Drag the hand icon from the Set Up a Windows Application dialog box to the title bar of the login window.



- 6 In the Select Window Function window, select Login Window from the drop-down list, then click Next.



7 Select the login fields.



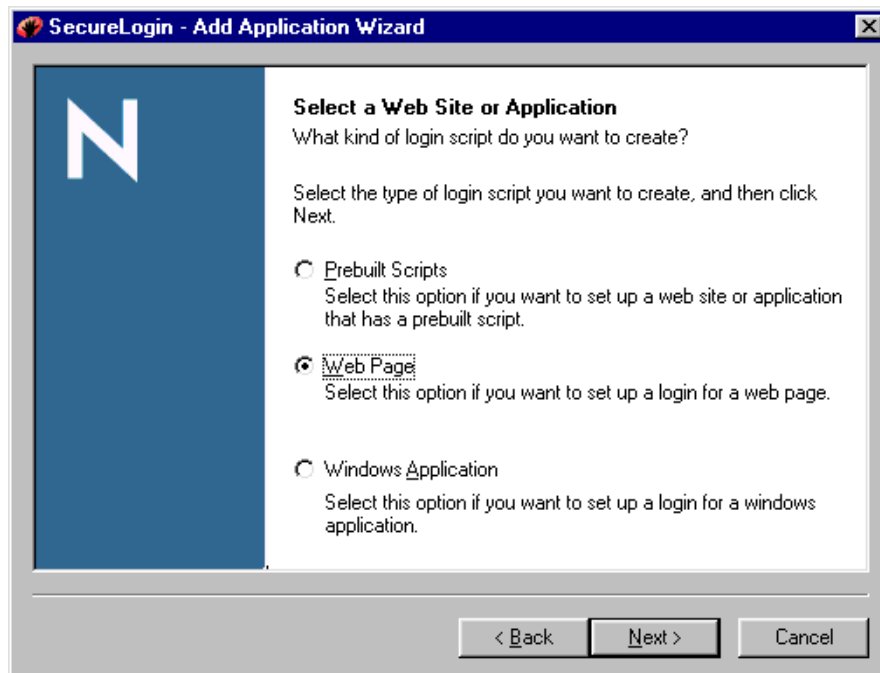
7a Drag the hand icons and drop them onto the corresponding Username, Password, and (if appropriate) Other fields in the login window.

7b Drag the hand icon for the OK button and drop it onto the OK, Next, Continue, or similar button.

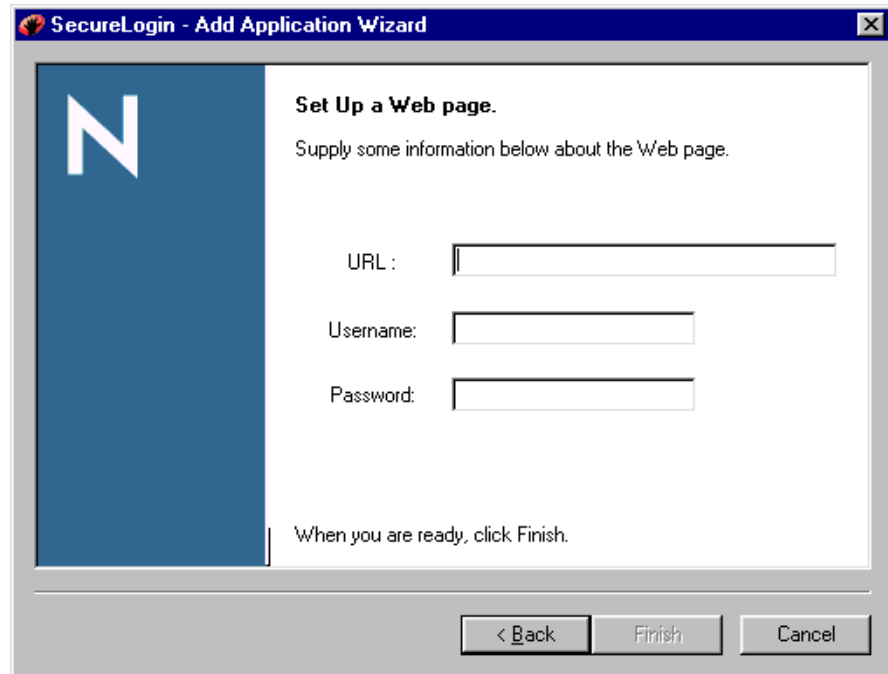
- 7c** Click Next.
- 8** In the Confirm Details dialog box, verify that your username is correct and that a password exists, then click Next.
- 9** In the Name the Script window, accept the default name (or select a name from the drop-down list or type a new name) for the application, then click Finish.

Enabling a Web Application

- 1** From a browser, go to the URL of the Web page that you want to log in to.
- 2** Right-click the SecureLogin icon on the task bar, then click Add Applications.
- 3** Click Next > Web Page > Next.



- 4** In the Set Up a Web Page dialog box, copy and paste the URL, type your username and password, then click Finish.



Enabling a Java Application

If Java applications are coded in AWT or SWING, SecureLogin can enable those applications for single sign-on.

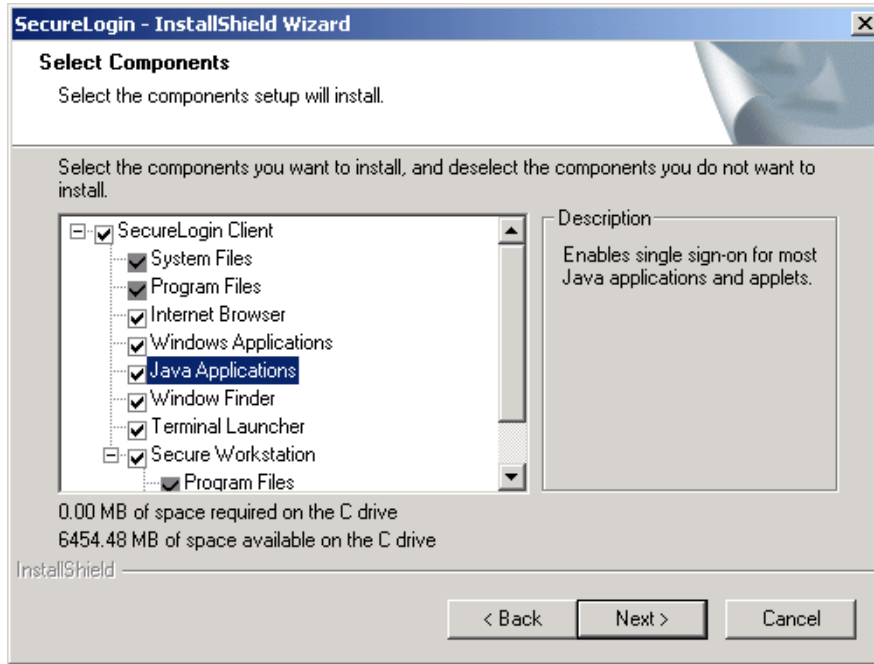
A script requires control numbers (hidden numbers that differentiate a Username edit box from a Password edit box). Determining the correct control numbers in a Java application might require trial and error. Therefore, we recommend that the network administrator configure Java applications centrally, test the applications, and then distribute them.

Prerequisites

- ◆ Sun* Microsystems Java Runtime Environment (JRE) 1.4.2 or later is installed on the workstation.

The Microsoft* Java Virtual Machine isn't supported.

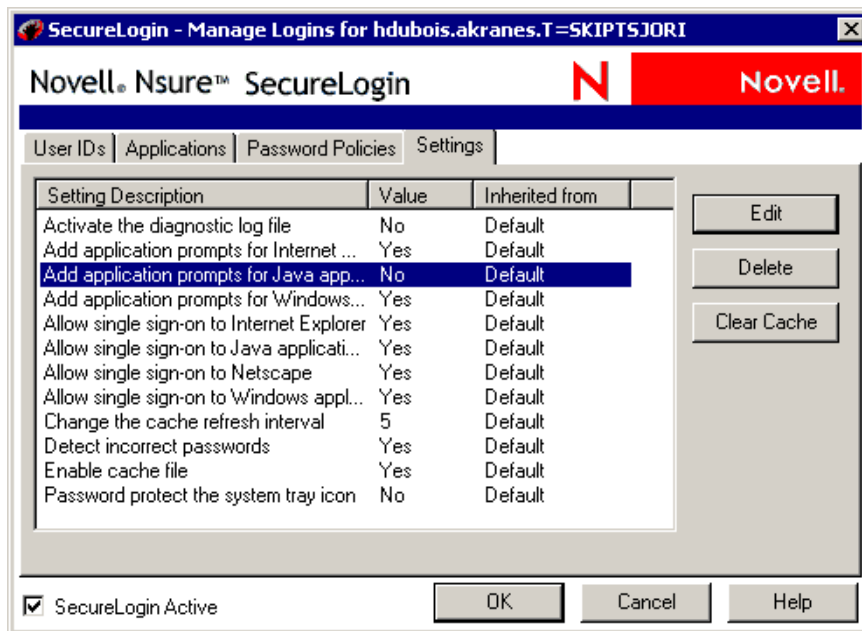
- ◆ Following installation of the JRE, SecureLogin 3.51.2 is installed on the workstation.
- ◆ During the SecureLogin installation, you selected the Java Applications component.



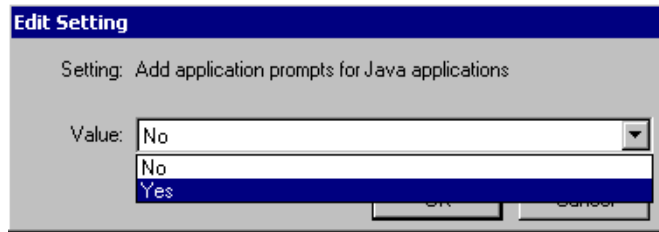
Enabling the Add Applications Wizard for Java

When the JRE is installed, the SecureLogin installation program installs Java support by default. However, when SecureLogin first launches, the Add Application Wizard for Java is disabled. To use Java applications, you must enable the Add Applications Wizard for Java.

- 1 Right-click the SecureLogin icon on the task bar, select Manage Logins, then click Settings.



- 2 Select Add Application Prompts for Java Applications, then click Edit.
- 3 Change the value to Yes, then click OK.

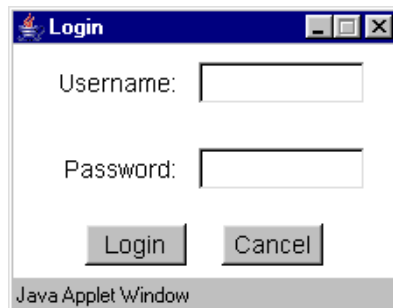


- 4** Set the Allow Single Sign-on to Java Applications value to Yes.
- 5** Save the data by clicking OK.

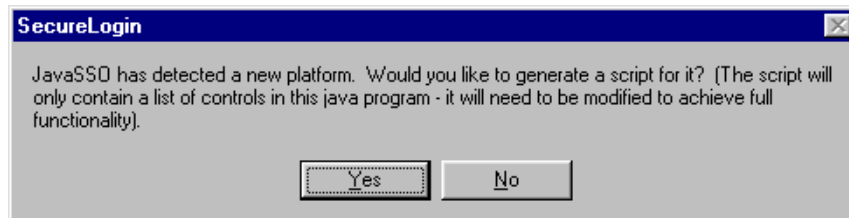
Adding the Java Application to the List of Applications

- 1** Launch the Java application.

The Java application can be an applet or an executable file. The application displays a login dialog box.



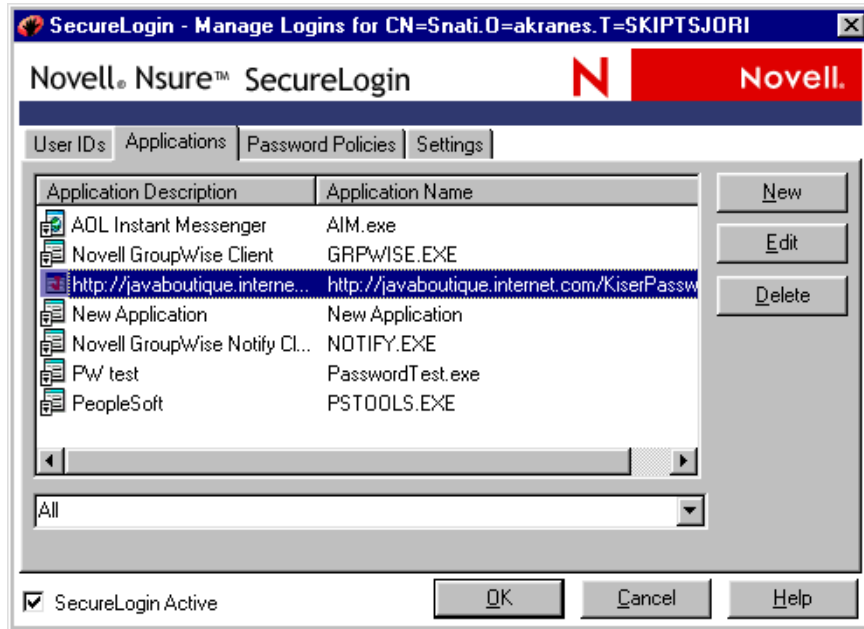
SecureLogin displays the following message:



- 2** Click Yes.

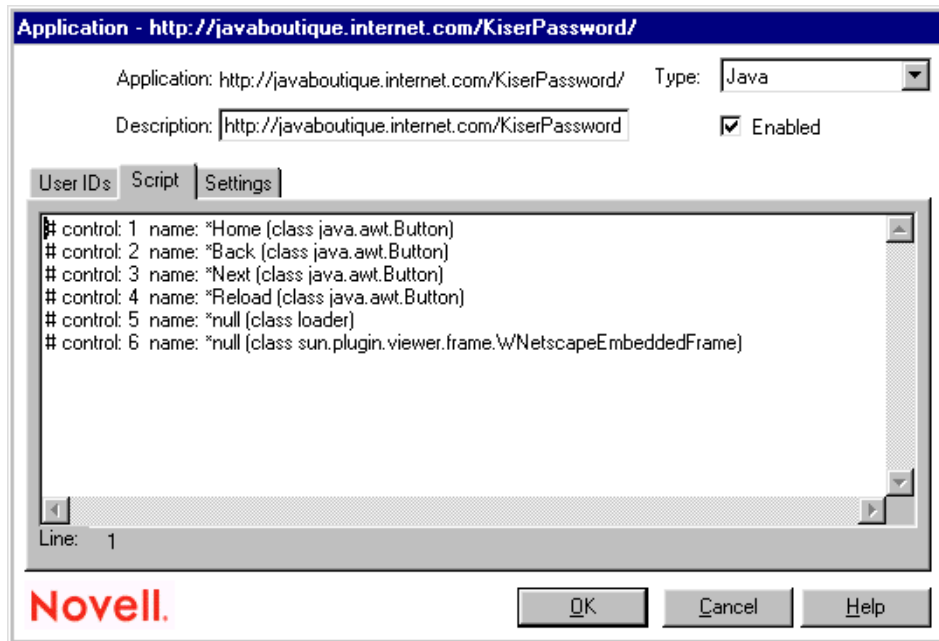
SecureLogin extracts and stores the Java control information for login to the application or server.

- 3** Double-click the SecureLogin icon on the task bar, then select Applications.



SecureLogin displays a new icon (Java) and application type (in this example, http://javaboutique).

- 4 Select the Java application, click Edit, then click Script.

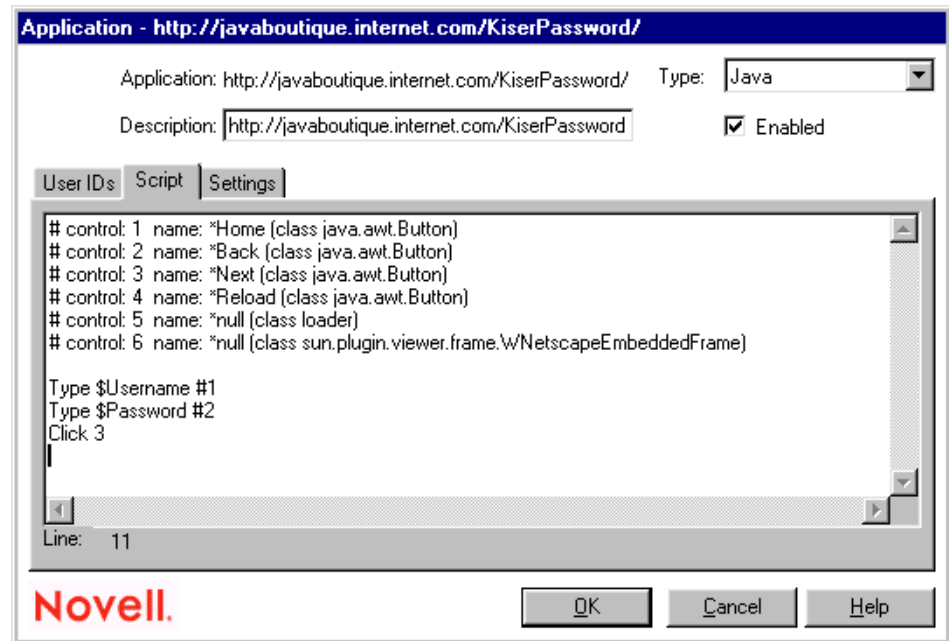


The Description field displays the application's address. The Script tab displays the Java control information that SecureLogin extracted from the Java login. The following table describes part of the example script:

Text in the Script	Description
#control 1:	The Username field

Text in the Script	Description
#control 2:	The Password field
#control 3:	The Login button

- 5 Modify the script by typing the commands and control numbers that enable SecureLogin to automatically log you in to the application.



Determining the control numbers might require trial and error.

- 6 Save the single-sign-on information by clicking OK twice.
- 7 Test the Java application by launching it and logging in.

4 User IDs

You use applications to do your work. If an application is password-protected, you must log in to it. To use Novell® SecureLogin to automatically log you in to an application, you create a user ID (set of credentials) and link it to that application.

If you added an application that has a prebuilt script, you need to link a user ID to it. This happens the next time that you access the application, when you provide login variables.

However, you don't need to add or create user IDs for applications that you enabled for single sign-on in the following ways:

- ♦ If you encountered a new application through a pop-up prompt and then used the Add Applications Wizard to enable the application.
- ♦ If you ran the Add Applications Wizard and selected a Web Page or Windows Application option as the script type.

In these two cases, SecureLogin's Add Application Wizard created the user ID while you were adding the application to SecureLogin's single sign-on functionality.

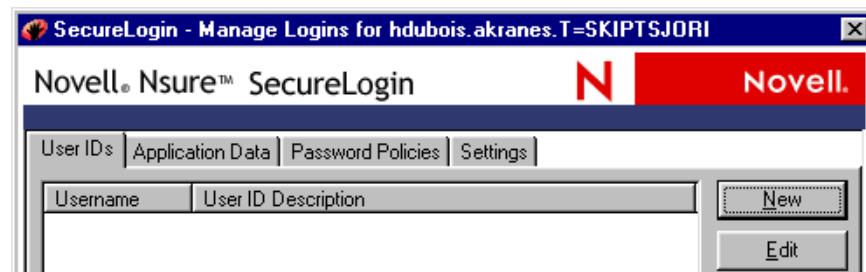
You can use the same user ID to log you in to more than one application.

Also, if you have multiple roles, you can set up multiple IDs for the same application. For example, you might be a network administrator as well as a user. When you log in to the network as administrator and then launch an application, SecureLogin asks you to select a profile. After you select the administrator profile, SecureLogin then automatically logs you in with the appropriate credentials.

Creating a User ID

You might want to create an additional user ID (set of login credentials) for one or more applications.

- 1 Right-click the SecureLogin icon on the task bar, then click Manage Logins.
- 2 Click User IDs > New.

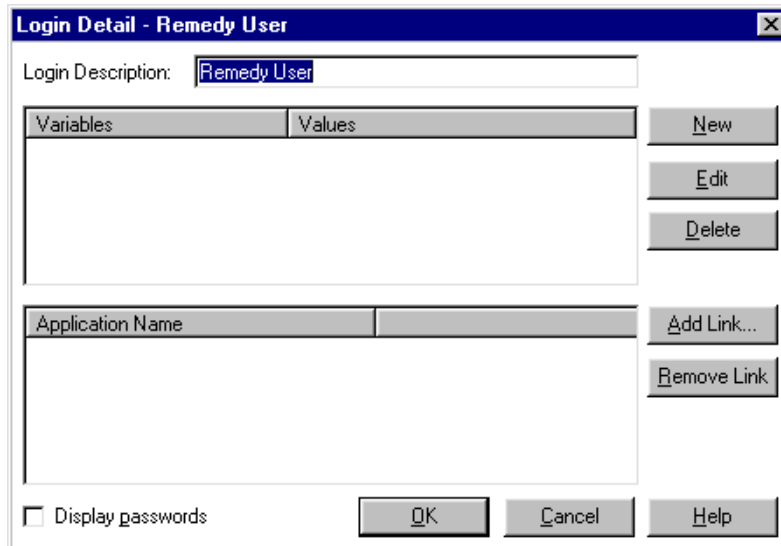


- 3 Type a description for the user ID, then click OK.



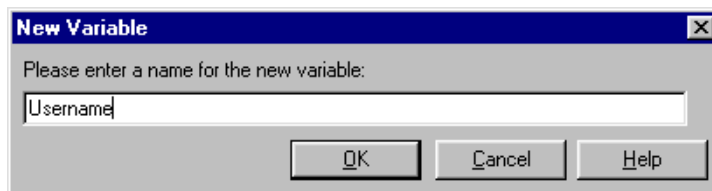
Typically, enter the application name.

- 4 Type login variables.



Entering a Name in the Variables Column

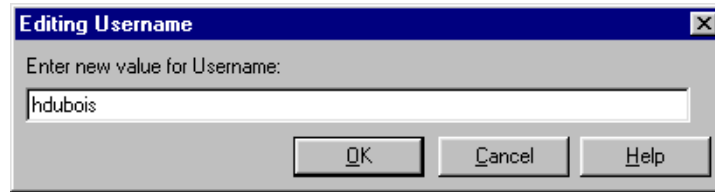
To enter a name in the Variables column, click New, type a name (for example, Username), then click OK.



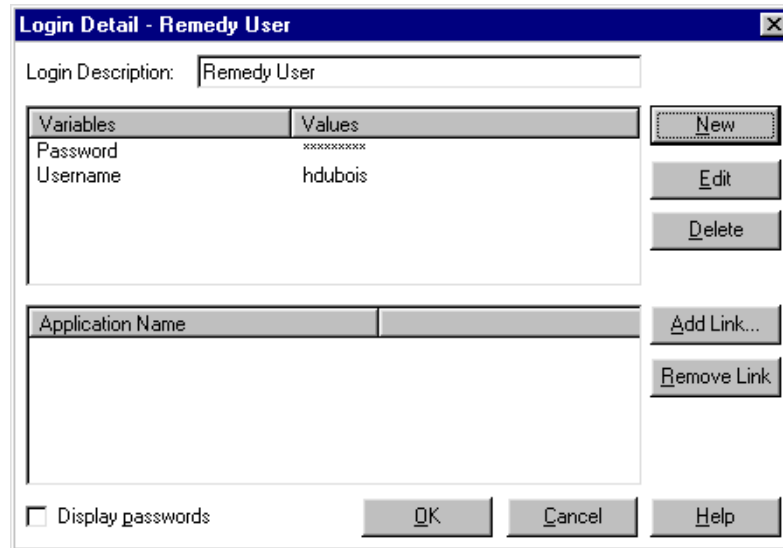
"Username" is a typical entry. However, it's a good idea to use the text that appears on the login panel. For example, text for a Windows application might be User Name or User ID, but text for a Web page that logs you in to a bank might be Account.

Entering a Value

The entry in the Variables column requires a matching value. In the Editing Username dialog box, type the value (for example, the actual username), then click OK.



Add other variables (for example, Password) and matching values (for example, the actual password) as required in the login panel.



If you have already saved values, you can edit them. For example, to change a password, click the Password variable, click Edit, then type and confirm the new password.

5 Link the user ID to an application.

Password-protected applications require login credentials. A user ID contains login credentials. SecureLogin can automatically log you in to an application after you link the correct user ID to the password-protected application.

5a Click Add Link.

5b Save the variables and values for the login (user ID), along with the link to the application, by clicking OK.

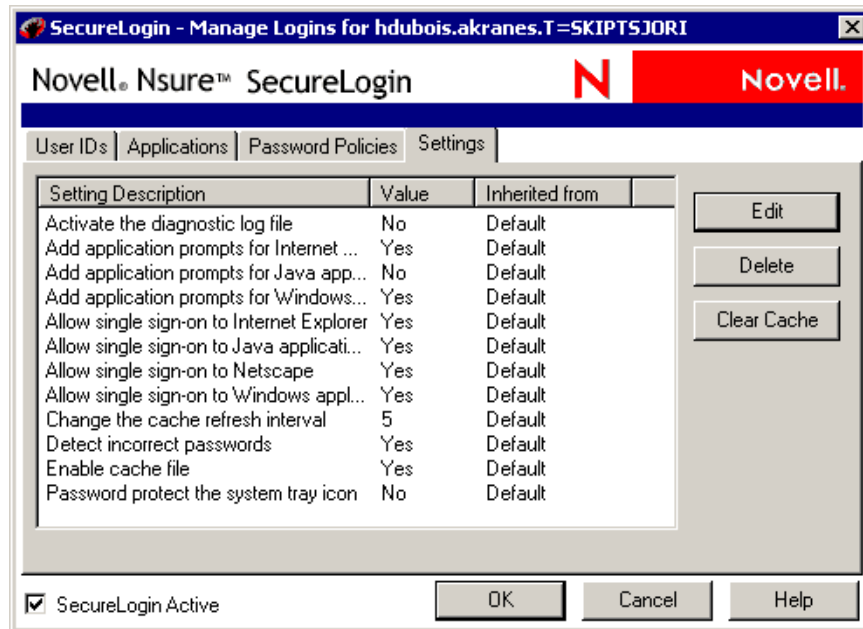
5c Save the data to cache by clicking OK again.

For additional information on user IDs, applications, and password policies, click the Help button that displays in SecureLogin on your workstation.

5

Changing Settings

The following figure illustrates Novell® SecureLogin settings:



The list in the Setting Description column is a subset of settings that the network administrator controls through management utilities (ConsoleOne®, Microsoft Management Console, or SecureLogin Manager). If an administrator has disabled a setting, you can't use it or change it on your workstation.

For information on the settings, click Help.

Disabling the Workstation's Cache

So that you can use login data when you work offline (for example, on a disconnected laptop), you can store login data in encrypted files on your workstation.

If you forget the passphrase answer password and can't log in by using your directory password, you need to delete and re-create the cache files. If you are authenticated to the network, SecureLogin automatically re-creates cache files.

You might need to delete the local cache if you are locked out of both the directory and the local cache. This would happen if an administrator reset your password and then you can't remember the passphrase answer. The administrator would then go to the User object in ConsoleOne and clear user data. You would then need to delete the local cache files and add login information again.

To disable the cache:

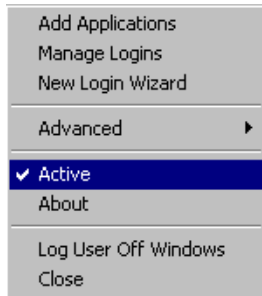
- 1 Double-click the SecureLogin icon on the task bar.
- 2 Click Settings > Enable Cache File.
- 3 Set the value to No, then click OK.

Clearing the Cache

A cache is a database stored on your workstation. Because the information in the cache is encrypted, no one can view the information. You might want to clear the cache if SecureLogin behaves strangely (for example, loss of sync with passwords, or having multiple credential sets when only one should exist). To clear the entries in the local cache, click Clear Cache. The cache file is updated at the next refresh.

Temporarily Disabling SecureLogin

You can use the Active setting to temporarily disable SecureLogin.



Scenario: Writing a New Script. You have started writing a script for an application. Because you need to inspect some control IDs with Window Finder, you do not want the script to run at this time. You disable the Active setting. SecureLogin doesn't run while you fine-tune the script. After troubleshooting, you click Active. SecureLogin is functional again.

Scenario: Troubleshooting an Existing Script. You have a script already written for an application. You open the application to get more information from it, so that you can put the information in your script. Because the Active setting is used, the script for the application runs.

You don't want to wait for the script to run while you look for control IDs. Therefore, you close the application, click Active to disable SecureLogin, then open the application. You then get the information that you need, return to your script, enter the information into the script, toggle to Enable, then run the script.

The Active setting can also be useful for the help desk to use in troubleshooting, so that a technician can manually step through a login.

To toggle the Active setting:

- 1 Right-click the SecureLogin icon on the task bar.
- 2 Click Active.

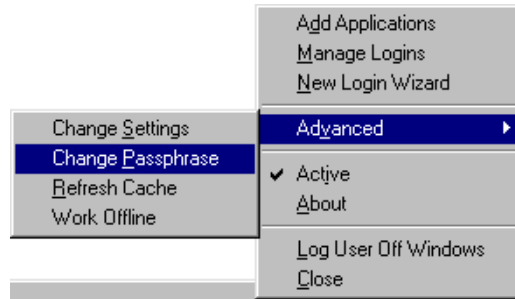
Changing Your Passphrase

If the network administrator allows you to and if the SecureLogin icon displays on your task bar, you can change a passphrase question and answer:

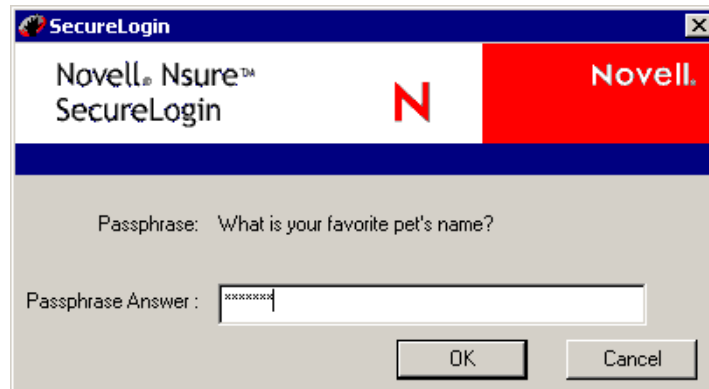
- 1 Right-click the SecureLogin icon on the task bar.



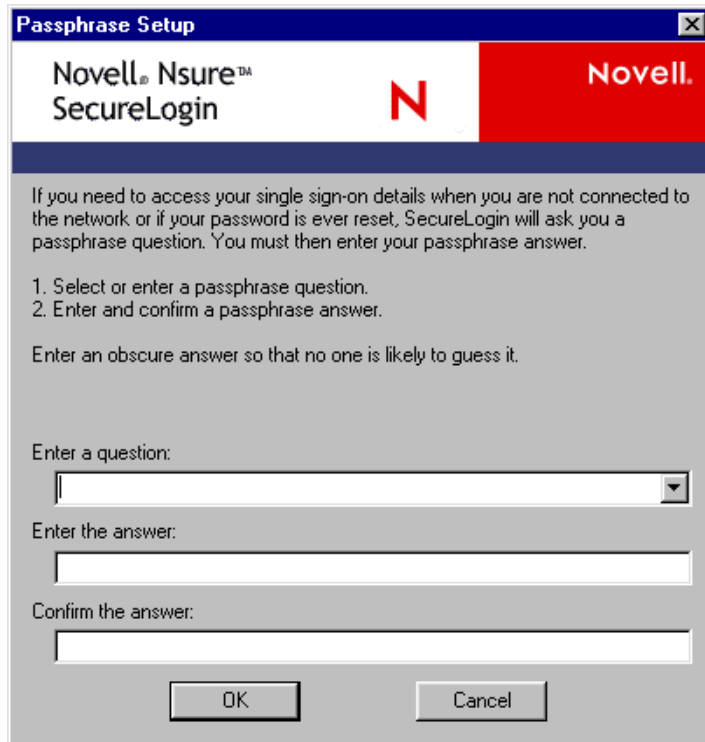
- 2 Click Advanced > Change Passphrase.



- 3 Type your existing passphrase answer.



- 4 Type the passphrase question, passphrase answer, or both, then click OK.
The following figure illustrates the change-passphrase dialog box.



If the system administrator requires you to respond to a pre-set passphrase question, you can select a question from the drop-down list.

If the system administrator allows you to enter your own question, you can type a new one or re-use or edit the same one. Then provide and confirm a passphrase answer.