

Novell Nsure™ Identity Manager

2.0.1

September 10, 2004

WHAT'S NEW IN IDENTITY MANAGER
2.0.1?

www.novell.com

N

Novell®

Legal Notices

Novell, Inc. makes no representations or warranties with respect to the contents or use of this documentation, and specifically disclaims any express or implied warranties of merchantability or fitness for any particular purpose. Further, Novell, Inc. reserves the right to revise this publication and to make changes to its content, at any time, without obligation to notify any person or entity of such revisions or changes.

Further, Novell, Inc. makes no representations or warranties with respect to any software, and specifically disclaims any express or implied warranties of merchantability or fitness for any particular purpose. Further, Novell, Inc. reserves the right to make changes to any and all parts of Novell software, at any time, without any obligation to notify any person or entity of such changes.

You may not export or re-export this product in violation of any applicable laws or regulations including, without limitation, U.S. export regulations or the laws of the country in which you reside.

Copyright © 2004 Novell, Inc. All rights reserved. No part of this publication may be reproduced, photocopied, stored on a retrieval system, or transmitted without the express written consent of the publisher.

U.S. Patent Nos. 5,349,642; 5,608,903; 5,671,414; 5,677,851; 5,758,344; 5,784,560; 5,818,936; 5,828,882; 5,832,275; 5,832,483; 5,832,487; 5,870,561; 5,870,739; 5,873,079; 5,878,415; 5,884,304; 5,919,257; 5,933,503; 5,933,826; 5,946,467; 5,956,718; 6,016,499; 6,065,017; 6,105,062; 6,105,132; 6,108,649; 6,167,393; 6,286,010; 6,308,181; 6,345,266; 6,424,976; 6,516,325; 6,519,610; 6,539,381; 6,578,035; 6,615,350; 6,629,132. Patents Pending.

Novell, Inc.
404 Wyman Street, Suite 500
Waltham, MA 02451
U.S.A.

www.novell.com

What's New in Identity Manager 2.0.1?

[September 10, 2004](#)

Online Documentation: To access the online documentation for this and other Novell products, and to get updates, see www.novell.com/documentation.

Novell Trademarks

DirXML is a registered trademark of Novell, Inc. in the United States and other countries.

Novell is a registered trademark of Novell, Inc. in the United States and other countries.

Nsure is a trademark of Novell, Inc.

SUSE is a registered trademark of SUSE LINUX AG, a Novell business.

Third-Party Trademarks

All third-party trademarks are the property of their respective owners.

Contents

- About This Guide** **7**

- 1 What's New in Identity Manager 2.0.1?** **9**
 - Platform Support 9
 - Installation 10
 - Driver Set Overview 10
 - Driver Overview. 12
 - Driver Configuration: Importing and Exporting 13
 - Driver Configuration: Editing 14
 - Driver Properties 14
 - Schema Mapping 16
 - Driver Filter 17
 - Policy Builder 18
 - Referencing External Policies. 19
 - Rule Builder, Argument Builder, and String Builder. 20
 - Versioning Discovery Tool 25
 - Password Management 25
 - Nsure Audit 25

- A Updates** **27**
 - September 10, 2004 27

About This Guide

This guide lists the features that are new in Novell® Nsure™ Identity Manager 2.0.1, as compared with Identity Manager 2.0.

Additional Documentation

For documentation on using the DirXML drivers, see the [Identity Manager Documentation Web site \(http://www.novell.com/documentation/lg/dirxmldrivers/index.html\)](http://www.novell.com/documentation/lg/dirxmldrivers/index.html).

Documentation Updates

For the most recent version of this document, see the [Identity Manager Documentation Web site \(http://www.novell.com/documentation/lg/dirxml20/index.html\)](http://www.novell.com/documentation/lg/dirxml20/index.html)

Documentation Conventions

In this documentation, a greater-than symbol (>) is used to separate actions within a step and items within a cross-reference path.

A trademark symbol (®, ™, etc.) denotes a Novell trademark. An asterisk (*) denotes a third-party trademark.

User Comments

We want to hear your comments and suggestions about this manual and the other documentation included with this product. To contact us, send e-mail to proddoc@novell.com.

1

What's New in Identity Manager 2.0.1?

This guide lists the features that are new in Novell® Nsure™ Identity Manager 2.0.1, as compared with Identity Manager 2.0.

For general information on the new features in Identity Manager 2.0 as compared with DirXML 1.1a, see “What's New in Identity Manager 2?” in the *Novell Nsure Identity Manager 2 Administration Guide*. For information on updates to Identity Manager administration documentation, see “Updates” in the *Novell Nsure Identity Manager 2 Administration Guide*.

For information on new features and documentation updates for individual drivers, see the [driver implementation guides \(http://www.novell.com/documentation/dirxml/drivers\)](http://www.novell.com/documentation/dirxml/drivers).

In this section:

- ◆ “Platform Support” on page 9
- ◆ “Installation” on page 10
- ◆ “Driver Set Overview” on page 10
- ◆ “Driver Overview” on page 12
- ◆ “Driver Configuration: Importing and Exporting” on page 13
- ◆ “Driver Configuration: Editing” on page 14
 - ◆ “Driver Properties” on page 14
 - ◆ “Schema Mapping” on page 16
 - ◆ “Driver Filter” on page 17
 - ◆ “Policy Builder” on page 18
 - ◆ “Referencing External Policies” on page 19
 - ◆ “Rule Builder, Argument Builder, and String Builder” on page 20
- ◆ “Versioning Discovery Tool” on page 25
- ◆ “Password Management” on page 25
- ◆ “Nsure Audit” on page 25

Platform Support

- ◆ AIX* is supported, specifically AIX 5.2L.
- ◆ Windows* 2003 is fully supported for the DirXML® engine and the drivers. Previously it was supported only as a platform for running drivers with the Remote Loader.
- ◆ SUSE® LINUX* Enterprise Server 9 is supported.
- ◆ Linux Red Hat* AS 3.0 is supported.

For more information on prerequisites, see “[Identity Manager Components and System Requirements](#)” in the *Novell Nsure Identity Manager 2 Administration Guide*.




For additional information on what the individual drivers support, refer to the [driver implementation guides](http://www.novell.com/documentation/dirxml/drivers/index.html) (<http://www.novell.com/documentation/dirxml/drivers/index.html>).

Installation

- ◆ Based on your platform, options that are not supported are dimmed. For example, if you are installing on the Windows platform, the NIS driver is dimmed in the list of drivers to install.
- ◆ When installing DirXML Web Components, the port number automatically changes whether you are using SSL or not. On the page where you set up authentication parameters for the Web server, if you deselect Use SSL, the Web Server Port changes to match.
- ◆ The install program now provides an option for installing a secondary cluster node. For a secondary node in a cluster, you use the option to install packages without configuring them. See “[High Availability](#)” in the *Novell Nsure Identity Manager 2 Administration Guide*.

Driver Set Overview

Some enhancements are visible on the Overview page, accessible in iManager by clicking DirXML Management > Overview.

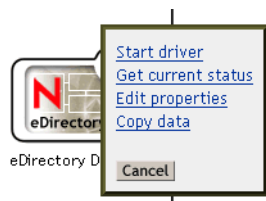
- ◆ A small icon next to the driver icon indicates the current startup setting for the driver.
 - ◆  Manual
 - ◆  Automatic
 - ◆  Disabled
- ◆ You can go to the driver property pages directly from the Driver Set Overview page. In the upper right corner of the driver icon, click the icon that indicates whether the driver is running. In the menu that pops up, click Edit Properties, as shown in the following figure.



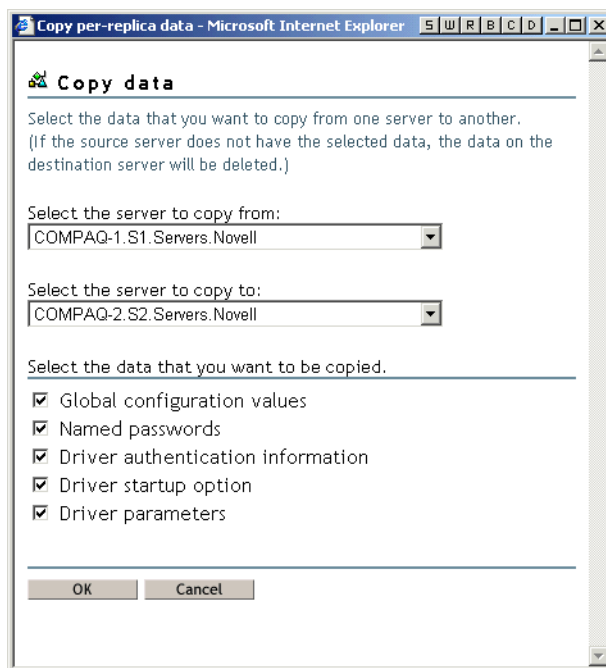
Previously you were required to click the driver icon on the Driver Set Overview page, then click the driver icon again on the Driver Overview page.

- ◆ A button labeled Information lets you view the version number of the DirXML engine and the drivers running on each server. See “[Versioning Discovery Tool](#)” on page 25.
- ◆ For drivers that are set up to run the same driver instance on multiple servers, the following enhancements were added:
 - ◆ The Copy Data option lets you copy driver parameters (such as per-replica attributes of the driver) from one server to another, by choosing the source and destination server and which kinds of parameters to copy.

To access this option, click the upper right corner of the driver icon in the Driver Set Overview, on the portion of the icon that indicates whether the driver is running. If the this driver instance is running on multiple servers, the Copy Data option is listed in the popup menu, as shown in the following figure:



When you click Copy Data, the following page appears, where you can specify the data that you want to be copied.



- ◆ In the driver property pages, each section that is server-specific lets you click the server name to switch between servers. This feature allows you to see how the driver parameters are set on each server.
- ◆ If the server where the driver set is running has a version of the DirXML engine that is out of date, a warning is displayed on the Driver Set Overview page.


For example, if you update the iManager plug-ins before updating the DirXML engine, the following warning is displayed: “The version of DirXML on this server is out-of-date. some features provided in the interface might not be supported by the version of the DirXML Engine on this server.”

An example is shown in the following figure.





Running on server(s):

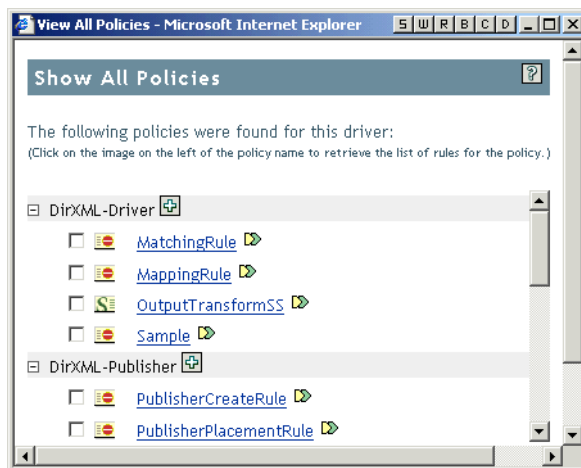


- Add Driver
- Delete Driver
- Information






 The version of DirXML on this server is out-of-date. Some features provided in the interface might not be supported by the version of the DirXML engine on this server.





Driver Overview

- ◆ As on the Driver Set Overview page, a small icon next to the driver icon indicates the current startup setting for the driver.
 - ◆  Manual
 - ◆  Automatic
 - ◆  Disabled
- ◆ Between the Subscriber and Publisher channels, a new icon  lets you view a list of all the policies at once. When you click the icon, a page like the following appears.



On this page, you can click the name of a policy to view or edit the policy. You can also do the following:

- ◆  Add a new policy to the driver
- ◆  View which policy set or policy sets a policy is in. If the policy is not part of any policy set, the icon displayed is .
- ◆ View the type of policy. For example,  represents a DirXML Script policy, and  represents a style sheet.

- ◆ Click the  or  icon to expand the list of rules in that policy.
- ◆ View a list of policies that are used by this driver but are actually policy objects held in another driver or driver set. The External References heading indicates these policies.
- ◆ On the property pages for a policy, you can enable or disable individual rules in the policy by clicking the icon to toggle the setting.
 - ◆  Indicates it is enabled.
 - ◆  Indicates it is disabled.

Driver Configuration: Importing and Exporting

- ◆ Driver configurations can be imported or exported even if the configuration contains references to an external policy.
- ◆ You can import a driver configuration from a file on the local system. Previously you could import only driver configurations that were in the correct directory on the iManager web server.
- ◆ The sample driver configurations contain the English text strings that describe the selections you make when importing the driver configuration. This means that you can read the import prompts in English even if the .xlf file containing the localized strings is not present.

This change supports the ability to import a driver configuration from a local file. Previously both the configuration file and the matching .xlf file were required in the correct directory on the iManager server.

- ◆ The Driver Name prompt is now a required field during the import, so you must specify a value before clicking Next.
- ◆ The Import Driver Wizard supports conditional prompting to reduce complexity when importing a driver configuration. The value you specify at an initial prompt can determine whether additional prompts are displayed when you click Next.

For example, in the sample driver configurations, flexible prompting is used for the Remote Loader settings. In in the Driver is Local/Remote prompt, if you specify Local, no additional prompts regarding Remote Loader are presented. If you specify Remote, and then click Next, additional prompts are displayed for setting up Remote Loader.

- ◆ In the Import Driver Wizard, two new policies are provided under the Additional Policies heading. These two policies are overlay policies for the DirXML Driver for Lotus* Notes*, and they have the following names:
 - ◆ Notes - Move Sample
 - ◆ Notes - Return Email Address

After you import these policies for a driver, you need to add them to a policy set.

For more information, see the *DirXML Driver for Lotus Notes Implementation Guide* (<http://www.novell.com/documentation/dirxml/drivers>).

- ◆ When you export a driver configuration, if the same driver instance is running on multiple servers, you specify which server holds the configuration you want to export.

Driver Configuration: Editing

In this section:

- ◆ “Driver Properties” on page 14
- ◆ “Schema Mapping” on page 16
- ◆ “Driver Filter” on page 17
- ◆ “Policy Builder” on page 18
- ◆ “Referencing External Policies” on page 19
- ◆ “Referencing External Policies” on page 19

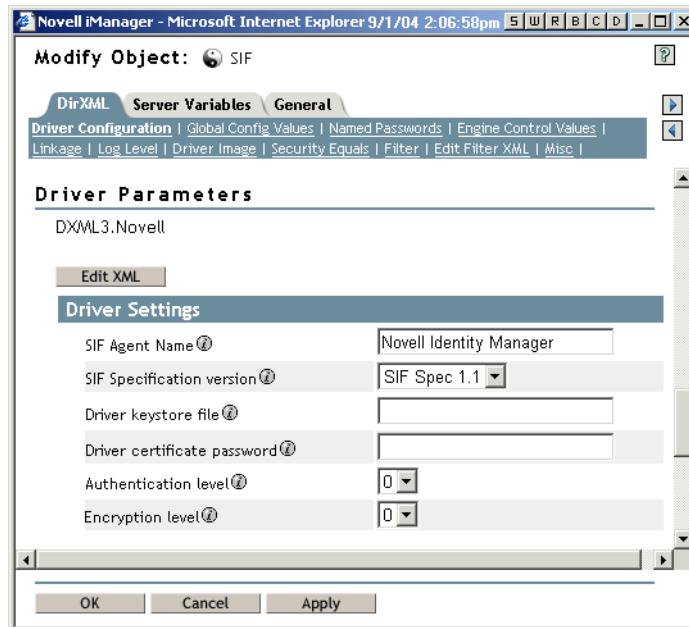
Driver Properties

- ◆ The Named Passwords feature is now available as a tab in the driver property book. For security, Named Passwords let you remove the actual password from the driver policy and instead refer to the password by a name of your choice.

Previously you could set Named Passwords using only the DirXML Command Line Utility. See “Using Named Passwords” in the *Novell Nsure Identity Manager 2 Administration Guide*.

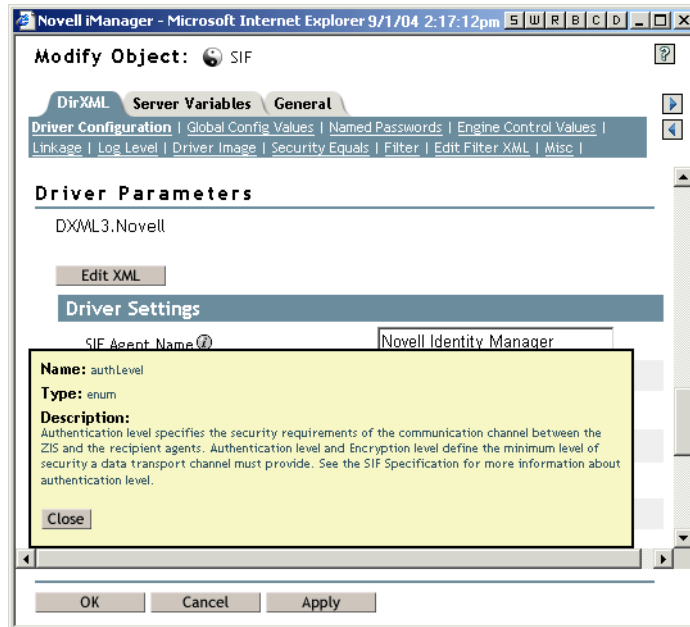
- ◆ The driver parameters interface supports drop-down lists for values, like the functionality used to provide you with valid choices when you import a driver.

For example, in the following figure a drop-down list indicates what the valid choices are for SIF Specification Version.



You can click Edit XML to see how the feature is implemented.

- ◆ The interface for both the driver parameters and the global configuration values (GCVs) support providing additional information about an item, indicated by the ⓘ icon. The following figure shows how this information is displayed when you click the icon.

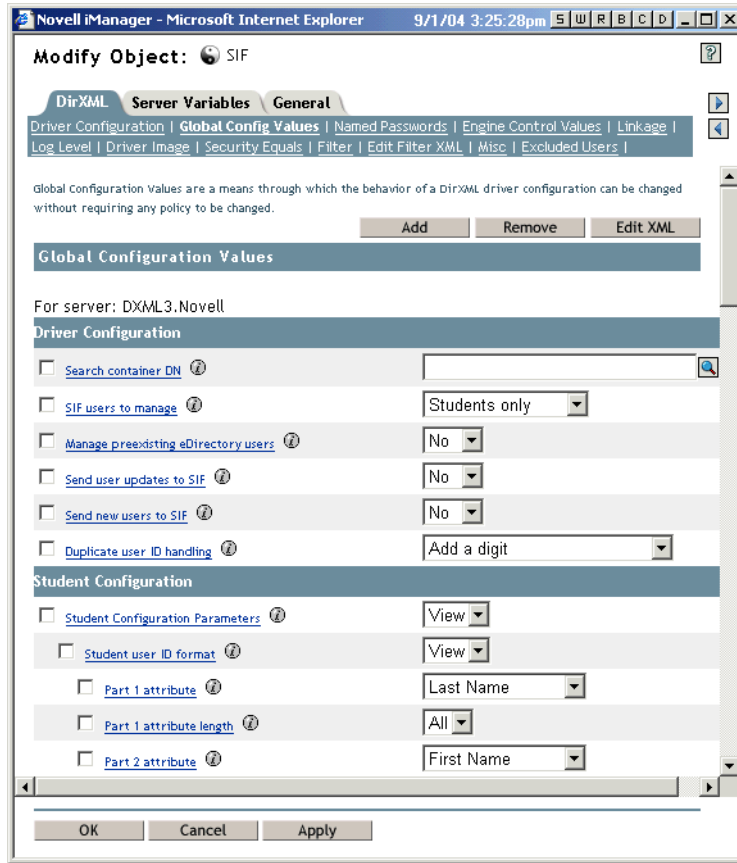


You can click Edit XML to see how the feature is implemented.

- ◆ The interface for global configuration values (GCVs) supports the following features to help organize the GCVs:
 - ◆ Drop-down lists
 - ◆ Headings
 - ◆ Hierarchical lists
 - ◆ View/hide settings
 - ◆ Browse buttons

If you click the Global Config Values tab in the sample driver configuration for the DirXML Driver for SIF, you can see extensive use of these new features.

The following figure shows an example:

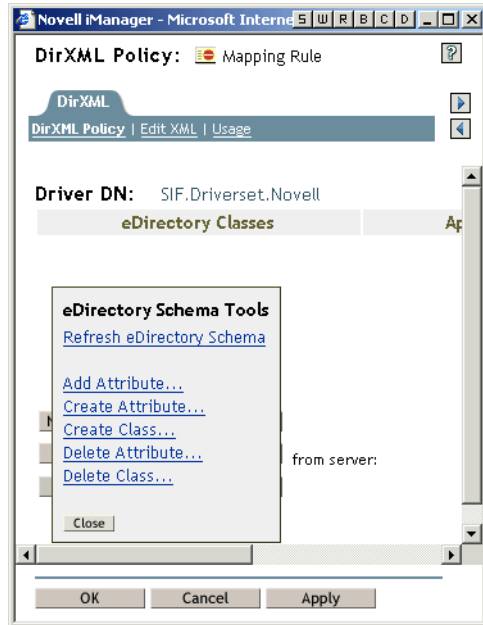


You can click Edit XML to see how these features are implemented.

Schema Mapping

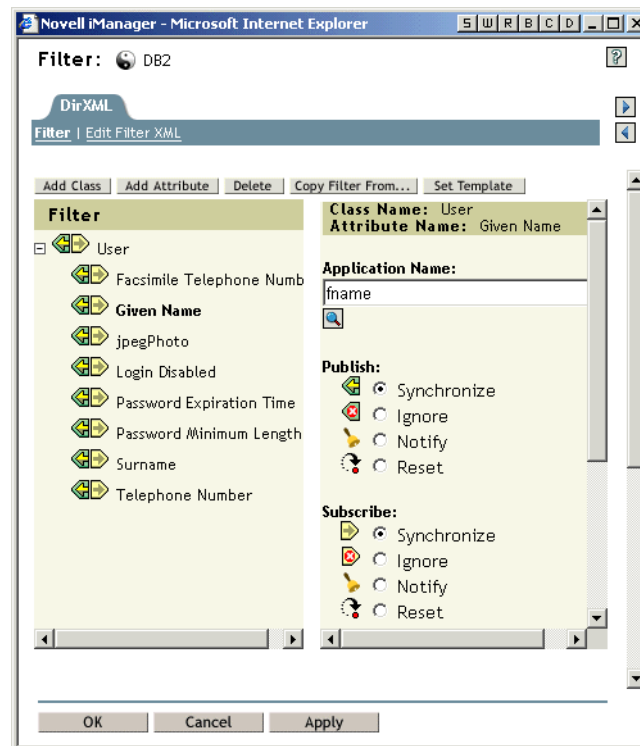
In the interface for the Schema Mapping Policy, you can click the button labeled eDirectory Schema Tools to make changes to the schema. Previously you had to use separate tasks in iManager.

The following figure shows the menu displayed when you click eDirectory Schema Tools.



Driver Filter

- ◆ The Filter interface provides a shortcut for resetting attributes on the Publisher or Subscriber channel; you can specify Reset as the value in the filter. This feature can be used even for multi-value attributes. The Reset option is shown in the following figure.



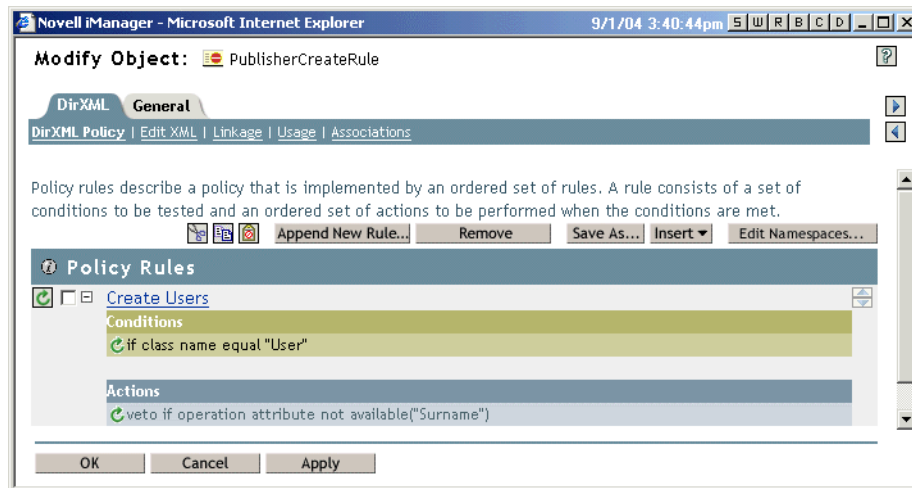
- ◆ The Filter interface provides a shortcut for schema mapping of attributes. The preceding figure shows an example. The Application Name field lets you specify what the attribute




should be mapped to, and a browse button is provided for browsing the schema of the connected system if it is available.

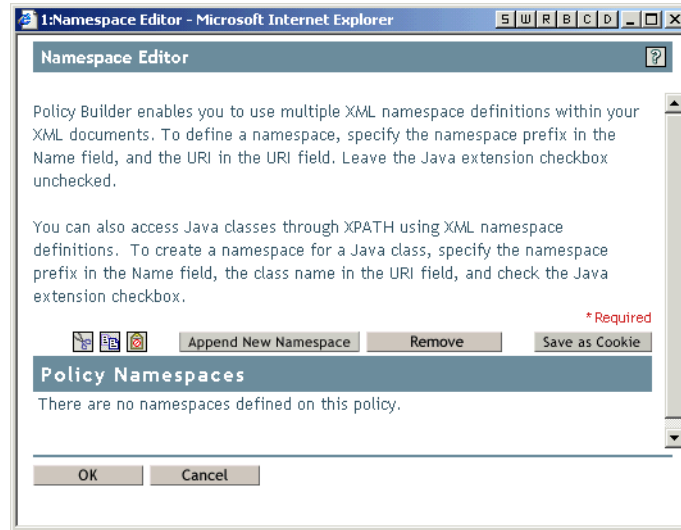
- ◆ When you collapse an attribute list in the left frame, that attribute remains collapsed even after you add a new attribute to the Filter.

Policy Builder

The following figure shows an example of the new features that are discussed in this section.



- ◆ For easier testing, you can enable or disable individual rules, condition groups, conditions, and actions in the policy by clicking the icon to toggle the setting.
 - ◆  Indicates it is enabled.
 - ◆  Indicates it is disabled.
- ◆ You can cut, copy, and paste individual rules. To do so, select the check box for the rule, and click the cut, copy, or paste icons: .
- ◆ You can delete individual rules by selecting the check box for the rule or rules and clicking the Remove button.
- ◆ You can save the policy to a file on the local system by clicking the Save As button.
- ◆ You can add another policy inside this policy by using the Insert button. See [“Referencing External Policies” on page 19](#).
- ◆ You can click the Add Namespace button to use the Namespace Editor. The namespaces you add can be saved as cookies, so you can select them later when you are editing.



Referencing External Policies

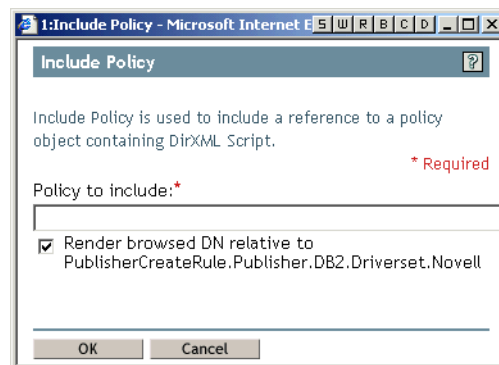
There are multiple ways to reference an external policy:

- ◆ When you add a policy to a driver, you can browse to a policy object anywhere in the tree, and create an external reference to it. You can add a policy that exists in a common library or exists as a policy object under another driver. The referenced policies are included when you import or export the driver configuration.

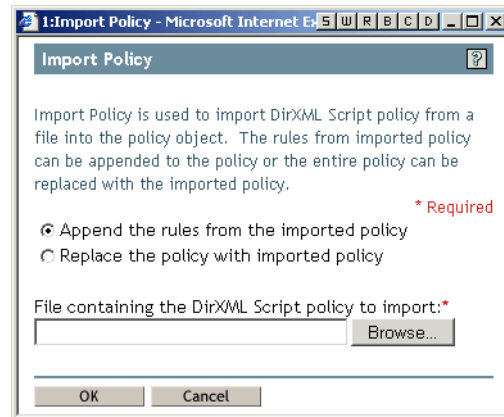
If the referenced policy is part of a chain, this method preserves chaining; if the policy has a successor in another policy set, the successor is also executed as part of the driver configuration.

- ◆ You can add another policy inside a policy using the Insert button in the Policy Builder. The Insert option gives you two choices:
 - ◆ Append a reference to a policy containing DirXML Script. This option does not copy the DirXML Script; instead it creates a reference to another policy object. This option results in an Include statement displaying the name of the reference policy. You can specify whether the policy is referred to by a relative address or an absolute address.

This method is not affected by chaining, so you can reuse policies in this way without regard to what they are chained to.

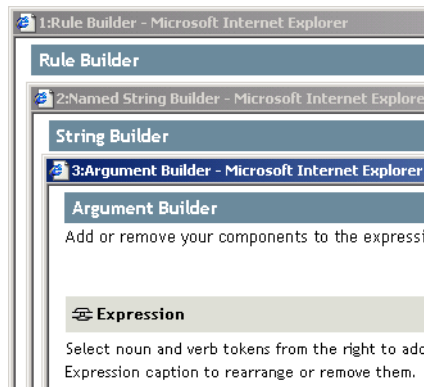


- ◆ Import an XML file containing DirXML Script. This option copies the DirXML Script into this policy.








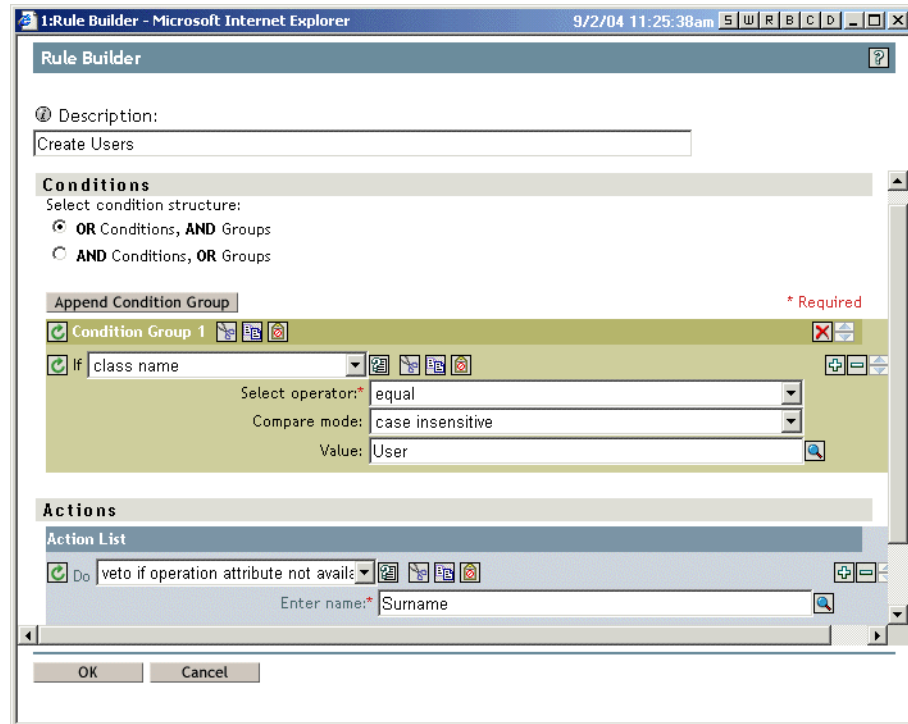
Rule Builder, Argument Builder, and String Builder

- ◆ The browser windows displayed for the Rule Builder, Argument Builder, and String Builder are numbered and are modal. For example, if you are in Rule Builder and open the String Builder and Argument Builder, the windows are numbered 1:Rule Builder, 2:String Builder, and 3:Argument Builder, as shown in the following figure.

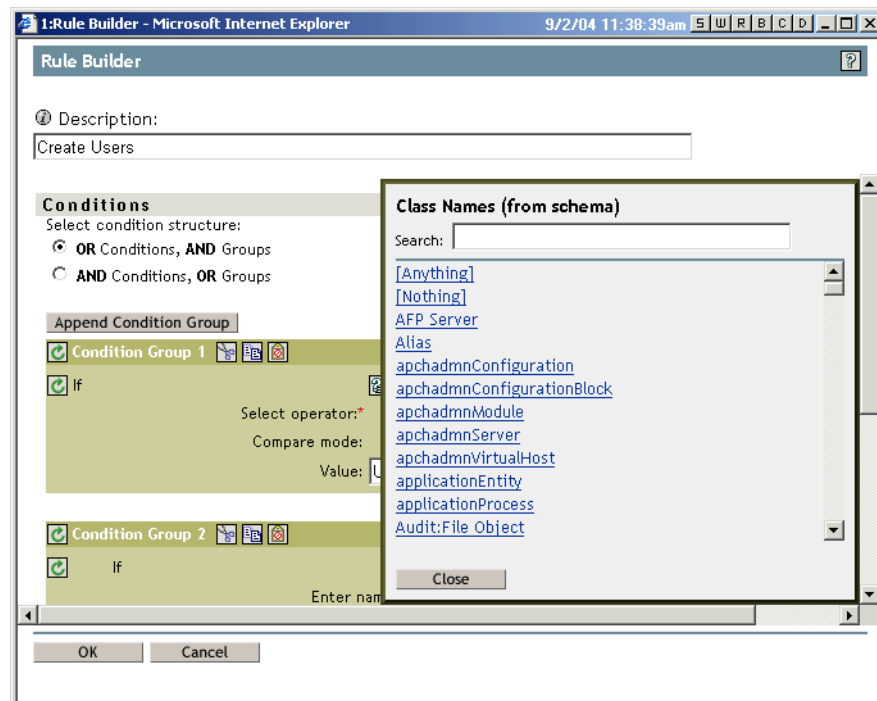


The windows stay in order to help you keep track of where you are in the interface. For example, if you click on the 1:Rule Builder window in this example, the other two windows are automatically displayed on top. This ordering persists until you close the windows.

- ◆ For easier testing, you can enable or disable individual, condition groups, conditions, and actions in the policy by clicking the icon to toggle the setting.
 - ◆  Indicates it is enabled.
 - ◆  Indicates it is disabled.
- ◆ You can cut, copy, and paste condition groups, conditions, and actions within the same policy or to other policies and other drivers. To do so, click the cut, copy, or paste icons:    beside the item, as shown in the following figure.

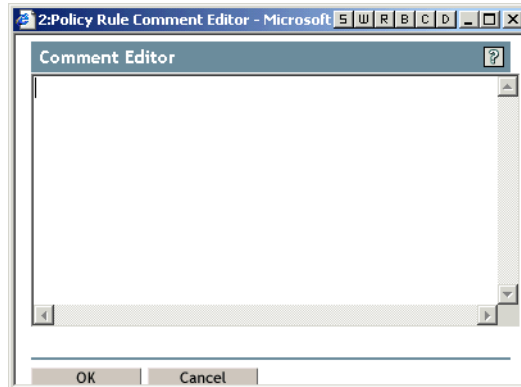


- ◆ Browsing lists such as the list of attributes is easier, because you can type the first few characters of the attribute name to cause the alphabetical list to scroll to that section. For example, in the following figure, after opening the Class Names list you can type GU to quickly scroll to the GUID attribute in the alphabetical list.



- ◆ In the Rule Builder, an information icon ⓘ is provided to let you add a description for the rule. When you click the icon, a Comment Editor is displayed. The comments you add are part of the policy and are included when you import or export the policy.

The following figure shows the Comment Editor.

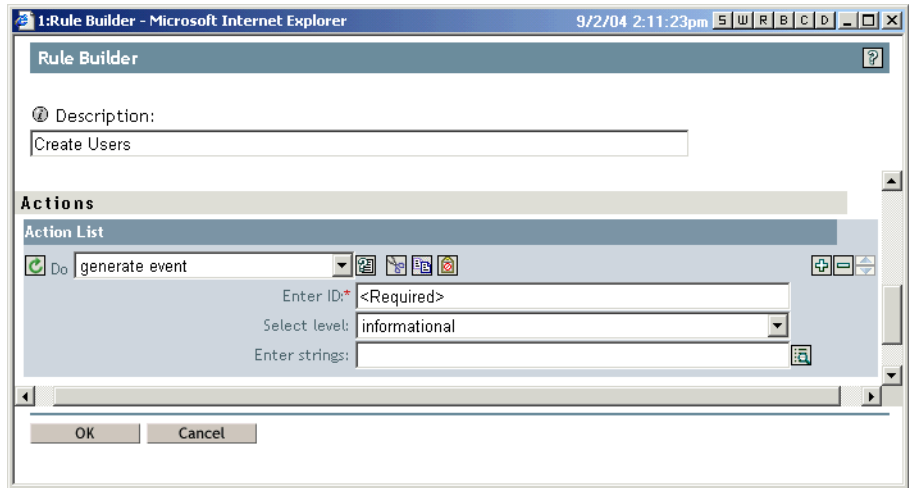



- ◆ As a shortcut in the Rule Builder, you can type a text entry instead of going into the Argument Builder.
- ◆ DirXML Script provides new conditions:
 - ◆ Named password. You can verify whether a Named Password you previously created exists in an operation.

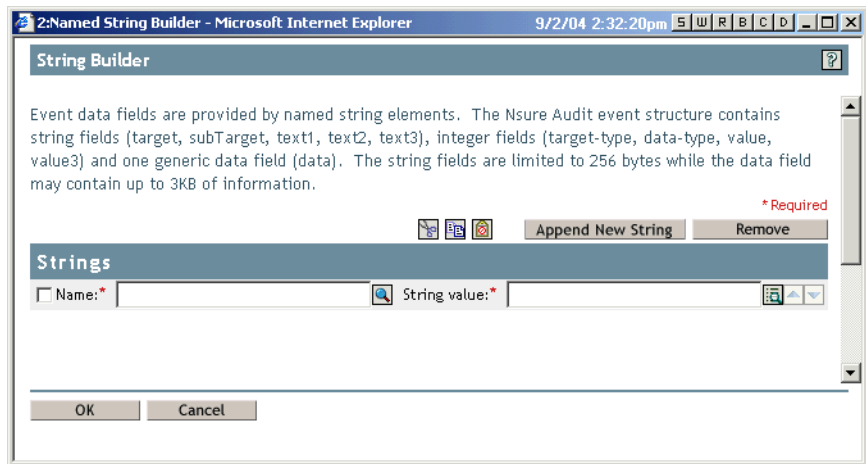
For security, Named Passwords let you remove the actual password from the driver policy and instead refer to the password by a name of your choice. See [“Using Named Passwords”](#) in the *Novell Nsure Identity Manager 2 Administration Guide*.
 - ◆ Operation property. You can check for the existence of an operation property.
- ◆ DirXML Script provides new actions:
 - ◆ Operation property. You can set or clear an operation property.
 - ◆ Clone by XPATH expressions.
 - ◆ Trace message. For debug purposes, you can use Policy Builder to create a trace message. You can also specify the color for the message text in the trace.

Previously this functionality was available only in a style sheet.
 - ◆ Generate event. Nsure Audit has been changed to allow for more event data to be passed. Event data fields are provided by named string elements. The Nsure Audit event structure contains string fields (target, subTarget, text1, text2, text3), integer fields (target-type, data-type, value, value3) and one generic data field (data).

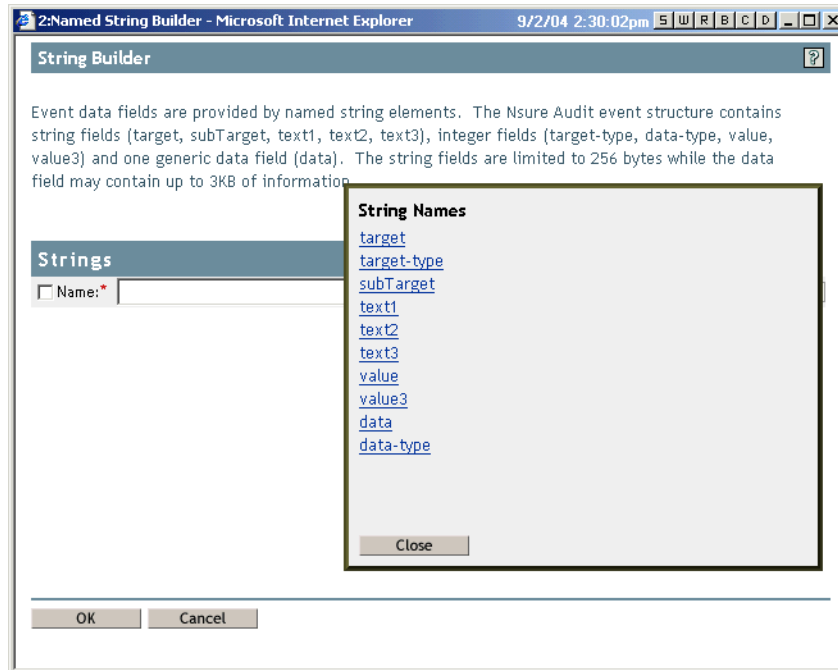
You can now use the generate event action to populate various field elements to pass data to Nsure Audit, as shown in the following figure.



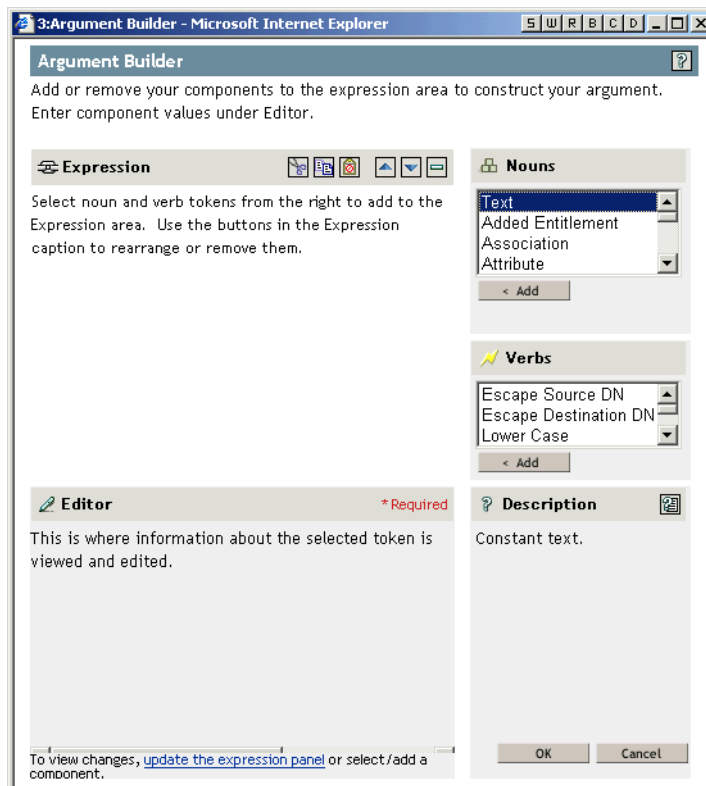
When you click the icon to enter strings , the String Builder opens and you can click Append New String to add additional elements.




After an element has been added, you can browse to select from a string list. As shown in the following figure, the String Names list is much longer (previously only 4 items were available).



- ◆ In the Argument Builder, when you add elements, nouns, verbs, etc., you can update the Expression list using a link at the bottom of the page that says “update the expression panel,” as shown in the following figure.



Previously you had to click OK and then go back into the Argument Builder to update the list.

- ◆ You can cut, copy, and paste expressions and tokens within the Expression list using the icons:


Versioning Discovery Tool

This new tool lets you view the version number of the DirXML engine and the drivers running on each server. You can access the tool in two places:

- ◆ As a separate task in iManager, DirXML Utilities > Versioning Discovery Tool.
- ◆ On the Overview page for a driver set (DirXML Management > Overview), by clicking the Information button.

To view version information in a text format or save it to a file, click the View or Save As button.

Keep in mind that you can view version information for a driver only if the driver has previously been started on that server. If the driver has not been run, the message displayed is <attribute not found>.

Password Management

A sample Password Policy, sample Challenge Set, and Notification Configuration templates are installed if they are not already present.

Nsure Audit

- ◆ Five sample reports are provided for Nsure Audit:
 - ◆ Objects Added
 - ◆ Objects Modified
 - ◆ Objects Deleted
 - ◆ Driver Activity
 - ◆ Driver Status
- ◆ Nsure Audit has been changed to allow for more event data to be passed. You can now use the generate event action to populate various field elements to pass data to Nsure Audit.

Event data fields are provided by named string elements. The Nsure Audit event structure contains string fields (target, subTarget, text1, text2, text3), integer fields (target-type, data-type, value, value3) and one generic data field (data).

To review example figures from Rule Builder, see the item about the generate event action in [“Rule Builder, Argument Builder, and String Builder”](#) on page 20.

A Updates

- ◆ “September 10, 2004” on page 27

September 10, 2004

- ◆ More platforms are listed in “Platform Support” on page 9.

