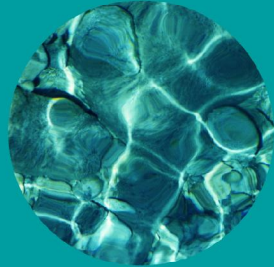




SecureWave  
**Sanctuary**<sup>®</sup>  
Device Control



Sanctuary Device  
Control Stand-Alone  
Decryption Tool

## Liability Notice

Information in this manual may change without notice and does not represent a commitment on the part of SecureWave.

SecureWave S. A. provides the software described in this manual under a license agreement. The software may only be used in accordance with the terms of the contract.

No part of this publication may be reproduced, transmitted, or translated in any form or by any means, electronic, mechanical, manual, optical, or otherwise, without the prior written permission of SecureWave.

SecureWave claims copyright in this program and documentation as an unpublished work, revisions of which were first licensed on the date indicated in the foregoing notice. Claim of copyright does not imply waiver of other rights by SecureWave.

Copyright 2000–2006© SecureWave S. A.  
All rights reserved.

## Trademarks

Sanctuary Device Control is a trademark of SecureWave S. A.  
All other trademarks recognized.

SecureWave  
Atrium Business Park  
23-ZA Bourmicht  
L-8070 Bertrange  
Luxembourg

Phone: +352 265 364-11 (add 011 when calling from USA or Canada)  
Fax: +352 265 364-12 (add 011 when calling from USA or Canada)  
Web: [www.SecureWave.com](http://www.SecureWave.com)

Technical Support hours are Monday to Friday, 8:00 to 20:00 CET/CEST in Europe and 8:00 AM to 8:00 PM ET/EDT in USA.

You can contact our technical support team by calling:

+352 265 364 300 (International),  
1-877-713-8600 (US Toll Free),  
0-800-012-1869 (UK Toll Free)

or by sending an email to [support@securewave.com](mailto:support@securewave.com)

Published on: September 2006



---

# Contents

Additional Information .....	5
Notational conventions .....	7
Typographic conventions .....	8
Keyboard conventions .....	9
To contact us.....	10
The Sanctuary Device Control Stand-Alone Decryption Tool .....	11
Introduction .....	11
Exporting keys .....	11
Accessing a media encrypted by Sanctuary Device Control from a non-protected computer.....	11
Introduction.....	11
Accessing the encrypted media from a non-protected machine.....	12
Installing Sanctuary Device Control Stand-Alone Decryption Tool .....	15
Table of Figures .....	19
Index .....	21





---

## Additional Information

In addition to the documents and the online help provided with Sanctuary Device Control, further information is available from our support web site at:

<http://www.SecureWave.com/>

This regularly updated Web site provides you with:

- > The latest software upgrades and patches.
- > Troubleshooting tips and answers to FAQ.
- > Other general support material that you may find useful.
- > New information about Sanctuary Device Control.





---

# Notational conventions

The following symbols are used throughout this guide to emphasize important points about the information you are reading:



*Special note. This symbol indicates further information about the topic you are working on. These may relate to other parts of the system or points that need particular attention.*



*Time. Used in a paragraph describing a 'short-cut' or tip that may save you time.*



*Caution. This symbol means that proceeding with a course of action may result in a risk, e.g. loss of data or potential problems with the operation of your system.*



---

# Typographic conventions

The following typefaces are used throughout this guide:

- > This typeface (*italic*) is used to represent fields, menu commands, and cross-references.
- > This typeface (`fixed width`) is used to represent messages or commands typed at a command prompt.
- > This typeface (`SMALL CAPS`) is used to represent buttons you click.





---

## Keyboard conventions

A plus sign between two keyboard keys means that you must press those keys at the same time. For example, ALT+R means that you hold down the ALT key while you press R.

A comma between two or more keys means you must press each of them consecutively. For example 'Alt,R,U' means that you press each key in sequence.



---

## To contact us

If you have a question that is not answered in the online help, documentation, or the SecureWave knowledge base, you can contact your SecureWave customer support team by telephone, fax, email, or regular mail.

Technical Support hours are Monday to Friday, 8:00 to 20:00 CET/CEST in Europe and 8:00 AM to 8:00 PM ET/EDT in USA.

You can contact our technical support team by calling:

+352 265 364 300 (International),  
1-877-713-8600 (US Toll Free),  
0-800-012-1869 (UK Toll Free)

or by sending an email to: [support@SecureWave.com](mailto:support@SecureWave.com)

Alternatively, you can write to customer support at:

SecureWave Support  
Atrium Business Park  
23-ZA Bourmicht  
L-8070 Bertrange  
Luxembourg



---

# The Sanctuary Device Control Stand-Alone Decryption Tool

## Introduction

There may be situations where data on a specifically authorized (encrypted) media would need to be accessed from a machine that is not protected by Sanctuary Device Control. The purpose of the Sanctuary Device Control Stand-alone Decryption tool is to allow access to the encrypted media from a non-protected computer.



*In this version of Sanctuary Device Control, it is not possible to exchange device-specific encrypted media between two computers members of different domains or organizations, on which the Sanctuary Device Control Client is installed.*

## Exporting keys

There are two different ways to export encryption keys. The most secure way is to export the disk encryption keys on a file and send them by a different channel (using e-mail for example) to the person that needs to access the encrypted media outside the company. The second way is to export the keys on the encrypted media itself. This second method is significantly less secure as the level of difficulty to access data will be directly linked to the media password complexity.

## Accessing a media encrypted by Sanctuary Device Control from a non-protected computer.

### Introduction

To access an encrypted media on machines where the Sanctuary Device Control Client is not installed, a user will have to use the Sanctuary Device Control Stand-Alone Decryption Tool. The user needs the following:

- > Have the Sanctuary Device Control Stand-Alone Decryption Tool installed on his computer. This tool can be found on the Sanctuary Device Control CD under



the SADEC folder, it can alternatively be downloaded from the SecureWave web site at the address

<http://www.securewave.com/turcana/securewave/sadec.jsp>

- > Please refer to the *Installing Sanctuary Device Control Stand-Alone Decryption Tool* on page 15 for more details.



The Sanctuary Device Control Stand-Alone Decryption Tool can only be installed on Windows 2000 Professional, Windows XP Professional and Windows 2003.

- > The user needs the encrypted device plugged on his computer.
- > If the disk encryption keys were not stored on the device, he will need the encryption keys file.
- > And finally the user will need the password to access the device and/or the encrypted key file.

## **Accessing the encrypted media from a non-protected machine**

1. Install the Sanctuary Device Control Stand-Alone Decryption Tool.
2. Attach the device to the computer.



3. In Windows Explorer, select the *Unlock media...* entry from the contextual menu of the encrypted drive.

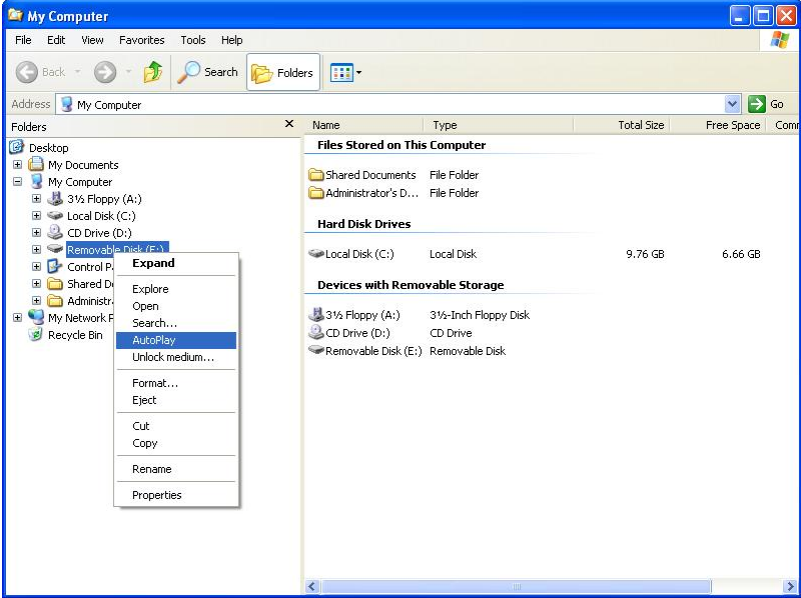


Figure 1: Unlocking the media

4. If the disk encryption key was exported on the encrypted media, click on MEDIA. If the key was exported on a file click FOLDER and browse for the file using the ellipsis button (...)

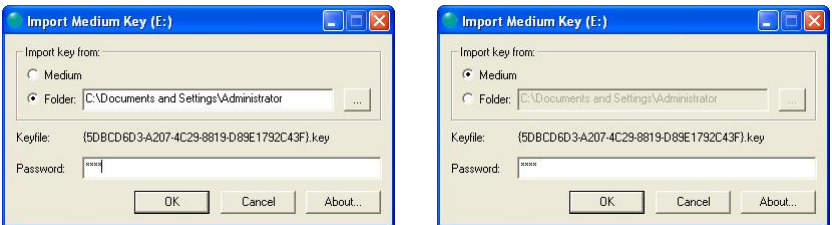


Figure 2: Importing data

5. Type in the media password in the *Password* field.
6. Click **OK**, providing you have entered the right key and media password, the media should be unlocked and accessible using Windows Explorer.



All data copied from the media to the computer hard drive will be decrypted during the copy operation and will be copied on the hard disk drive in unencrypted format. Make sure you store the files copied to a secure location. All data copied from the hard drive to the media will be encrypted during the copy operation and will be copied on the removable media in encrypted format.



# Installing Sanctuary Device Control Stand-Alone Decryption Tool

This chapter explains how to install the Sanctuary Device Control Stand-Alone Decryption Tool onto the client computers you want to control.

To install the Sanctuary Device Control Stand-Alone Decryption Tool on your client computers, follow the steps below:

1. Log on to the client computer with administrative rights.
2. Close all programs running on the computer.
3. Select the SADEC folder on the Sanctuary Device Control CD-ROM or navigate to the network share where the Sanctuary Device Control Stand-Alone Decryption Tool setup files are located. Run `SETUP.EXE`. The Setup program launches the MSI installer.
4. When this is complete, the *Welcome* dialog is displayed. Click on NEXT to continue.

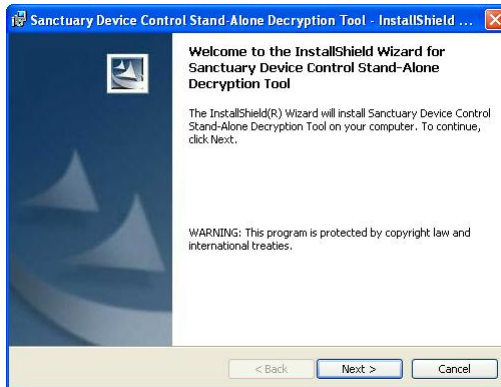


Figure 3: SADEC installation: welcome screen

5. Review the Release notes thoroughly. They may contain updated information and late breaking tips that didn't make it into this guide. Use the scroll bars to read all of the text, and then click on NEXT to continue.



Figure 4: SADEC installation: release notes

6. The *License Agreement* is displayed in the next dialog. Copyright and international treaties protect the Sanctuary Device Control software. Read the license agreement carefully, and providing you agree with its terms, click on I ACCEPT and then click NEXT to continue.

If you do not agree with its terms, click on I DO NOT ACCEPT to terminate *Setup* without installing Sanctuary Device Control Stand-Alone Decryption Tool.



Figure 5: SADEC installation: license agreement





7. Click on **INSTALL** to start the installation. This will take about 2 minutes depending on the hardware in use.

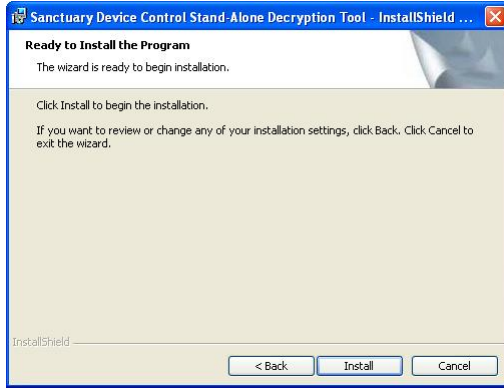


Figure 6: SADEC installation: ready to install

8. The Sanctuary Device Control Stand-Alone Decryption Tool setup will then prompt you to reboot one final time.



Figure 7: SADEC installation: restart message





---

# Table of Figures

Figure 1: Unlocking the media .....	13
Figure 2: Importing data .....	13
Figure 3: SADEC installation: welcome screen .....	15
Figure 4: SADEC installation: release notes.....	16
Figure 5: SADEC installation: license agreement .....	16
Figure 6: SADEC installation: ready to install .....	17
Figure 7: SADEC installation: restart message .....	17





---

# Index

## A

Accessing a media encrypted by Sanctuary Device Control from a non-protected computer; 11, 12  
Additional Information; 5

## C

Contact information; 10

## E

Encryption

Export Keys; 11

Password; 13

## I

Installing; 12, 15

## S

SADEC; 11, 12

Sanctuary Device Control Stand-Alone Decryption Tool; 11, 15

## U

Unlock media; 13