



Nokia Intellisync Mobile Suite Installation Guide

Version 8.0

Published July 2007

COPYRIGHT

©2007 Nokia. All rights reserved.
Rights reserved under the copyright laws of the United States.

RESTRICTED RIGHTS LEGEND

Use, duplication, or disclosure by the United States Government is subject to restrictions as set forth in subparagraph (c)(1)(ii) of the Rights in Technical Data and Computer Software clause at DFARS 252.227-7013.

Notwithstanding any other license agreement that may pertain to, or accompany the delivery of, this computer software, the rights of the United States Government regarding its use, reproduction, and disclosure are as set forth in the Commercial Computer Software-Restricted Rights clause at FAR 52.227-19.

IMPORTANT NOTE TO USERS

This software and hardware is provided by Nokia Inc. as is and any express or implied warranties, including, but not limited to, implied warranties of merchantability and fitness for a particular purpose are disclaimed. In no event shall Nokia, or its affiliates, subsidiaries or suppliers be liable for any direct, indirect, incidental, special, exemplary, or consequential damages (including, but not limited to, procurement of substitute goods or services; loss of use, data, or profits; or business interruption) however caused and on any theory of liability, whether in contract, strict liability, or tort (including negligence or otherwise) arising in any way out of the use of this software, even if advised of the possibility of such damage.

Nokia reserves the right to make changes without further notice to any products herein.

TRADEMARKS

Nokia is a registered trademark of Nokia Corporation. Synchrologic, Mobile Suite, RealSync, and Intellisync are trademarks of Nokia. Other products mentioned in this document are trademarks or registered trademarks of their respective holders.

060101

Nokia Contact Information

Corporate Headquarters

Web Site	http://www.nokia.com
Telephone	1-888-477-4566 <i>or</i> 1-650-625-2000
Fax	1-650-691-2170
Mail Address	Nokia Inc. 313 Fairchild Drive Mountain View, California 94043-2215 USA

Regional Contact Information

Americas	Nokia Inc. 313 Fairchild Drive Mountain View, CA 94043-2215 USA	Tel: 1-877-997-9199 Outside USA and Canada: +1 512-437-7089 email: info.ipnetworking_americas@nokia.com
Europe, Middle East, and Africa	Nokia House, Summit Avenue Southwood, Farnborough Hampshire GU14 ONG UK	Tel: UK: +44 161 601 8908 Tel: France: +33 170 708 166 email: info.ipnetworking_emea@nokia.com
Asia-Pacific	438B Alexandra Road #07-00 Alexandra Technopark Singapore 119968	Tel: +65 6588 3364 email: info.ipnetworking_apac@nokia.com

Nokia Customer Support

Web Site:	https://support.nokia.com/
Email:	tac.support@nokia.com
Americas	Europe
Voice:	Voice:
1-888-361-5030 or 1-613-271-6721	+44 (0) 125-286-8900
Fax:	Fax:
1-613-271-8782	+44 (0) 125-286-5666
Asia-Pacific	
Voice:	
+65-67232999	
Fax:	
+65-67232897	

050602

Contents

In This Guide	5
Conventions This Guide Uses	5
Notices	5
Command-line Conventions	6
Text Conventions	7
Related Documentation	8
Accessing Electronic Documents	8
Accessing Online Help	8
Server Documentation	9
Server Online Help	9
Nokia Intellisync Mobile Suite Client Documentation	10
Nokia Intellisync Mobile Suite Client Online Help	10
1 Introduction and Requirements	11
Overview	11
Nokia Intellisync Wireless Email	11
Nokia Intellisync Device Management	12
Nokia Intellisync File Sync	12
Nokia Intellisync Application Sync	12
RealSync Server	12
Licensing	13
Recommended Server Configuration	13
Components Requiring Dedicated Computers	13
For Product Evaluation and Small Installations	14
Environment Analyzer	15
System Requirements	15
Important Notes	17
Additional Information About Server Requirements	17
Database Information	17
2 Server Installation	19
Overview	19
Before You Install	19
Collecting Information	19
Server Installation	20

The Nokia Intellisync Web Site	24
Installing the Software on Multiple Servers	24
Installing the Secure Gateway	24
Setting Up the Remote ASA Database Server	24
Installing ASA on Nokia Intellisync Mobile Suite Servers	25
Installing and Configuring Nokia Intellisync Mobile Suite Servers	26
Domino Cluster Failover Support	30
Uninstalling the Server Software	31
3 Initial Testing After Installation	33
Overview	33
Web Site Availability	33
Domain Logon Test	34
Logon Troubleshooting	34
Successful Authentication	36
Successful Access to Lotus Domino	36
Successful Access to Novell GroupWise	36
Successful Access to Microsoft Exchange	36
Setting Up Devices	37
Reviewing Exchange Data	39
Reviewing Content	40
Test Complete	40
4 Client Install	41
Overview	41
Client Installation Options	41
Installing from the Web Site	41
Installing Wirelessly from the Web Site	41
Installing from a Custom Installation Program	42
Instructions for Outlook	42
Setting Up Microsoft Outlook – Windows 98	42
Setting Up Microsoft Outlook – Windows 2000 and XP	43
Setting Up Nokia Intellisync Wireless Email for Outlook	44
Uninstalling the Client Software	44

About This Guide

In This Guide

This guide is organized into the following chapters:

- [Chapter 1, “Introduction and Requirements”](#)
- [Chapter 2, “Server Installation”](#)
- [Chapter 3, “Initial Testing After Installation”](#)
- [Chapter 4, “Client Install”](#)

Additional information provided in this specific chapter is as follows:

- [“Conventions This Guide Uses”](#)
- [“Related Documentation”](#)

Conventions This Guide Uses

The following sections describe the conventions this guide uses, including notices, text conventions, and command-line conventions.

Notices

**Warning**

Warnings advise the user that bodily injury might occur because of a physical hazard.

**Caution**

Cautions indicate potential equipment damage, equipment malfunction, loss of performance, loss of data, or interruption of service.

Note

Notes provide information of special interest or recommendations.

Command-line Conventions

You may encounter one or more of the following elements on a command-line path.

Table 1 Command-line Conventions

Convention	Description
command	This required element is usually the product name or other short word that invokes the product or calls the compiler or preprocessor script for a compiled Nokia product. It might appear alone or precede one or more options. You must spell a command exactly as shown and use lowercase letters.
<i>Italics</i>	Indicates a variable in a command that you must supply. For example: delete interface <i>if_name</i> Supply an interface name in place of the variable. For example: delete interface nic1
angle brackets < >	Indicates arguments for which you must supply a value: retry-limit <1-100> Supply a value. For example: retry-limit 60
Square brackets []	Indicates optional arguments. delete [slot slot_num] For example: delete slot 3
Vertical bars, also called a <i>pipe</i> ()	Separates alternative, mutually exclusive elements. framing <sonet sdh> To complete the command, supply the value. For example: framing sonet or framing sdh
-flag	A flag is usually an abbreviation for a function, menu, or option name, or for a compiler or preprocessor argument. You must enter a flag exactly as shown, including the preceding hyphen.
.ext	A filename extension, such as .ext, might follow a variable that represents a filename. Type this extension exactly as shown, immediately after the name of the file. The extension might be optional in certain products.

Table 1 Command-line Conventions (*continued*)

Convention	Description
(. , ; + * - /)	Punctuation and mathematical notations are literal symbols that you must enter exactly as shown.
''	Single quotation marks are literal symbols that you must enter as shown.
<SUITE_ROOT>	This notation refers to the directory path where you installed the Nokia Intellisync Mobile Suite software. When you see <SUITE_ROOT> used in documentation, substitute the directory name and path where your Nokia Intellisync Mobile Suite software is installed.

Text Conventions

Table 2 describes the text conventions in this guide.

Table 2 Text Conventions

Convention	Description
monospace font	Indicates command syntax, or represents computer or screen output, for example: Log error 12453
bold monospace font	Indicates text you enter or type, for example: # configure nat
Key names	Keys that you press simultaneously are linked by a plus sign (+): Press Ctrl + Alt + Del.
Menu commands	Menu commands are separated by a greater than sign (>): Choose File > Open.
The words enter and type	Enter indicates you type something and then press the Return or Enter key. Do not press the Return or Enter key when an instruction says <i>type</i> .
<i>Italics</i>	<ul style="list-style-type: none"> Emphasizes a point or denotes new terms at the place where they are defined in the text. Indicates an external book title reference. Indicates a variable in a command: <code>delete interface <i>if_name</i></code>

Related Documentation

Nokia offers a common framework for the Nokia Intellisync Mobile Suite products. For this reason, there are electronic manuals and online help systems that cover the entire suite, plus additional resources for specific products.

For instructions to access documentation, see the following topics:

- [“Accessing Electronic Documents”](#)
- [“Accessing Online Help”](#)

Note

You can access this administrator’s guide in PDF on the Nokia support Web site (<https://support.nokia.com>).

Nokia Intellisync Mobile Suite includes a comprehensive documentation library, as described in these sections:

- [“Server Documentation”](#)
- [“Server Online Help”](#)
- [“Nokia Intellisync Mobile Suite Client Documentation”](#)
- [“Nokia Intellisync Mobile Suite Client Online Help”](#)

In addition, refer to the Release Notes (*ReleaseNotesEN.pdf*) to view the most current requirements, restrictions, operational notes, and troubleshooting information.

- Server documentation and online help
- Nokia Intellisync Mobile Suite Client and online help

Accessing Electronic Documents

In addition to this guide, there are several other documents in electronic format. Electronic documents are available in the installation source folder in the Documentation directory in Adobe Portable Document Format (PDF). After you install the Nokia Intellisync Mobile Suite software on the server, these documents are available in the Intellisync\Documentation directory (or the Synchronologic\doc directory) on the server.

Accessing Online Help

In addition to the electronic versions of the manuals, online help assists you as you work with the application. After you install the Nokia Intellisync Mobile Suite software, these help systems are available in the Intellisync\bin directory (or the Synchronologic\bin directory) on the server.

To access online help, open the program and click **Help** or press F1. In addition, many of the windows and dialog boxes have Help buttons that display online information and instructions.

Server Documentation

The following server documentation is available for Wireless Email. These documents are available in the Intellisync\Documentation directory (or Synchrologic\Documentation directory) on the server.

Nokia Intellisync Mobile Suite Installation Guide (InstallGdeEN.pdf -- this book)

Includes the installation requirements and other information you need to install Nokia Intellisync Mobile Suite software for servers and clients. This guide applies to the entire suite and is shared with other Nokia Intellisync Mobile Suite products.

Nokia Intellisync Mobile Suite Release Notes (ReleaseNotesEN.pdf) Includes important information you should know before you install and use Nokia Intellisync Mobile Suite. Also includes important late-breaking information that may not be included in other documentation. This document applies to the entire suite and is shared with other Nokia Intellisync Mobile Suite products.

Nokia Intellisync Mobile Suite Administrator's Guide (AdminGdeEN.pdf) Includes an introduction to the suite and general information about using the suite successfully. This guide applies to the entire suite and is shared with other Nokia Intellisync Mobile Suite products.

Nokia Intellisync Device Management and File Sync Administrator's Guide (DeviceMgmtFileSyncGdeEN.pdf) Written as a companion book to the administrator's guide. Covers available functions and features with Device Management and File Sync.

Nokia Intellisync Secure Gateway Administrator's Guide (SecureGatewayGdeEN.pdf) Written as a companion book to the administrator's guide. Covers administrative functions for managing the Secure Gateway.

Nokia Intellisync Device Management and File Sync Administrator's Guide (DeviceMgmtFileSyncGdeEN.pdf) Written as a companion book to the administrator's guide. Covers available administrative functions for managing the Secure Gateway.

Server Online Help

The following online help systems are available for the server.

Nokia Intellisync Mobile Suite Web-based Admin Console Help Includes information related to the managing the server using a Web browser.

Nokia Intellisync Mobile Suite (MMC) Admin Console Help – Management (ManagementHelpEN.chm) Includes information related to the Management control on the MMC console tree, such as Users, Groups, Reports, and Logs. This help system applies to the entire suite and is shared with other Nokia Intellisync Mobile Suite products.

Nokia Intellisync Mobile Suite control Help – Profile Settings (ProfileHelpEN.chm)

Includes information to help you use profile settings effectively. This help system applies to the entire suite and is shared with other Nokia Intellisync Mobile Suite products.

Device Management/File Sync Help (iSMiFDEN.chm) Includes information specific to Device Management and File Sync.

Nokia Intellisync Mobile Suite Client Documentation

The following electronic documents are available for Wireless Email clients. Each guide includes information for installing software on devices using a specific platform, setting synchronization settings, and synchronizing for the first time.

Table 3 Client Guides

Name	File Name
Nokia Intellisync Mobile Suite Client Guide - Palm OS Platform	PalmUsersGuideEN.pdf
Nokia Intellisync Mobile Suite Client Guide - Pocket PC Platform	PPCUsersGuideEN.pdf
Nokia Intellisync Mobile Suite Client Guide - Smartphone Platform	SmartphoneUsersGuideEN.pdf
Nokia Intellisync Mobile Suite Client Guide - S60 3rd Edition Platform	Symbian60_UsersGuideEN.pdf
Nokia Intellisync Mobile Suite Client Guide - SymbianS80 Platform	Symbian80_UsersGuideEN.pdf
Nokia Intellisync Mobile Suite Client Guide - Symbian UIQ Platform	SymbianUIQ_UsersGuideEN.pdf

Note

The client guides are *not* installed as part of the client installation. You decide whether to provide the documentation to your users.

Nokia Intellisync Mobile Suite Client Online Help

The following online help systems are available for Wireless Email clients.

Nokia Intellisync Mobile Suite Client On-device Help Includes information about using the Nokia Intellisync Mobile Suite Client, such as synchronization, attachments, contacts, and meeting requests.

Nokia Intellisync PC Client (SynchroClientEN.chm) Includes information about using the Nokia Intellisync Mobile Suite Client on a PC.

1 Introduction and Requirements

Overview

Nokia Intellisync Mobile Suite is a collection of products designed to help you support your mobile workforce. This collection of products handles distribution, collection, and synchronization of your e-business data, documents, and applications. At any given time, your mobile employees have access to the same data and corporate applications as your LAN-connected employees.

The following products make up the suite:

- [Nokia Intellisync Wireless Email](#)
- [Nokia Intellisync Device Management](#)
- [Nokia Intellisync File Sync](#)
- [Nokia Intellisync Application Sync](#)

This guide covers system requirements and installation procedures for all products except Nokia Intellisync Application Sync. For Application Sync, refer to the *Nokia Intellisync Application Sync Installation Guide*.

Nokia Intellisync Wireless Email

Using Nokia Intellisync Wireless Email, you can synchronize PIM and e-mail data from Microsoft Exchange, Lotus Domino, or Novell GroupWise to Windows CE, Windows Mobile-based Smartphone, Symbian OS, and Palm OS handheld devices and SyncML devices, as well as Microsoft Outlook and Lotus Notes on a personal computer (PC). You can also access corporate e-mail, calendar entries, address book, to do lists, and memos from any Web browser or Internet-ready mobile phone.

Note

Nokia Intellisync Wireless Email requires Domino shortnames in Domino Person Documents.

In addition, Nokia Intellisync Wireless Email can send alerts to your mobile phone, alphanumeric pager, RIM/Blackberry device, or e-mail account. Wireless Email also provides useful information based on your users' travel and appointment plans, such as weather, travel

itinerary, maps, directions, and other content. Users can receive custom alerts for itinerary summaries and meeting reminders on a wireless phone or pager.

For supported devices, you can set up the Push feature so your device receives new mail as it comes in, without any intervention from you.

Nokia Intellisync Device Management

Nokia Intellisync Device Management delivers software installations and software updates to your client computers. Using Device Management, you can also view and manage asset information for your mobile devices. Examples of asset information include types of devices in use, users experiencing low RAM or low battery power, and hardware and software information.

Device Management also provides the capability to collect files or content from mobile users for file and device backups.

Nokia Intellisync File Sync

Using Nokia Intellisync File Sync, you can send files, file updates, or other content to your mobile users. You can make files available to your users by publishing the files. Then, you can control who receives specific files by subscribing users to the files. Nokia Intellisync File Sync can deliver documents of almost any file type, including Microsoft Word documents, Excel spreadsheets, and HTML pages.

Nokia Intellisync Application Sync

Nokia Intellisync Application Sync synchronizes and distributes relational data among client PCs that are intermittently connected to a server. Application Sync includes components for servers and client computers, and provides synchronization among many combinations of databases.

Instructions for installing Nokia Intellisync Application Sync are in the *Nokia Intellisync Application Sync Installation Guide*, available in the installation source folder.

RealSync Server

RealSync Server (RSS) synchronizes relational data from a corporate database with mobile devices. This functionality, sometimes referred to as basic data synchronization or handheld data synchronization, is supported for Palm OS devices and Pocket PC devices.

You can create custom application databases for these devices to meet your organization's needs. The Nokia Intellisync Mobile Suite control is available to track, manage, and maintain these devices.

Licensing

Nokia Intellisync Mobile Suite products require a valid software license to operate. During the server software installation process, you are prompted to enter a license key. A license can limit which Nokia Intellisync products are installed, how long the product remains operational (as in the case of evaluation software), and the number of users that may use the software.

Contact Nokia to upgrade an evaluation license or add more client users to an existing license. Enter the new license key in the Intellisync Licensing dialog box. Use the following steps to reach the Intellisync Licensing dialog box:

1. From the Nokia Intellisync Mobile Suite control, select Intellisync Mobile Suite.
2. Choose Action > About Intellisync Mobile Suite.
3. Click License to view or modify the license information for the software.

Recommended Server Configuration

Many factors—the number of users, the number of concurrent users, and the volume of information shared, among others—affect how you should set up your system. This section provides some general guidelines to use.

Components Requiring Dedicated Computers

Depending on the size of your installation and the number of users you serve, some components may be installed on the same computer. Other components perform best when each component is installed on a dedicated computer (or computers).

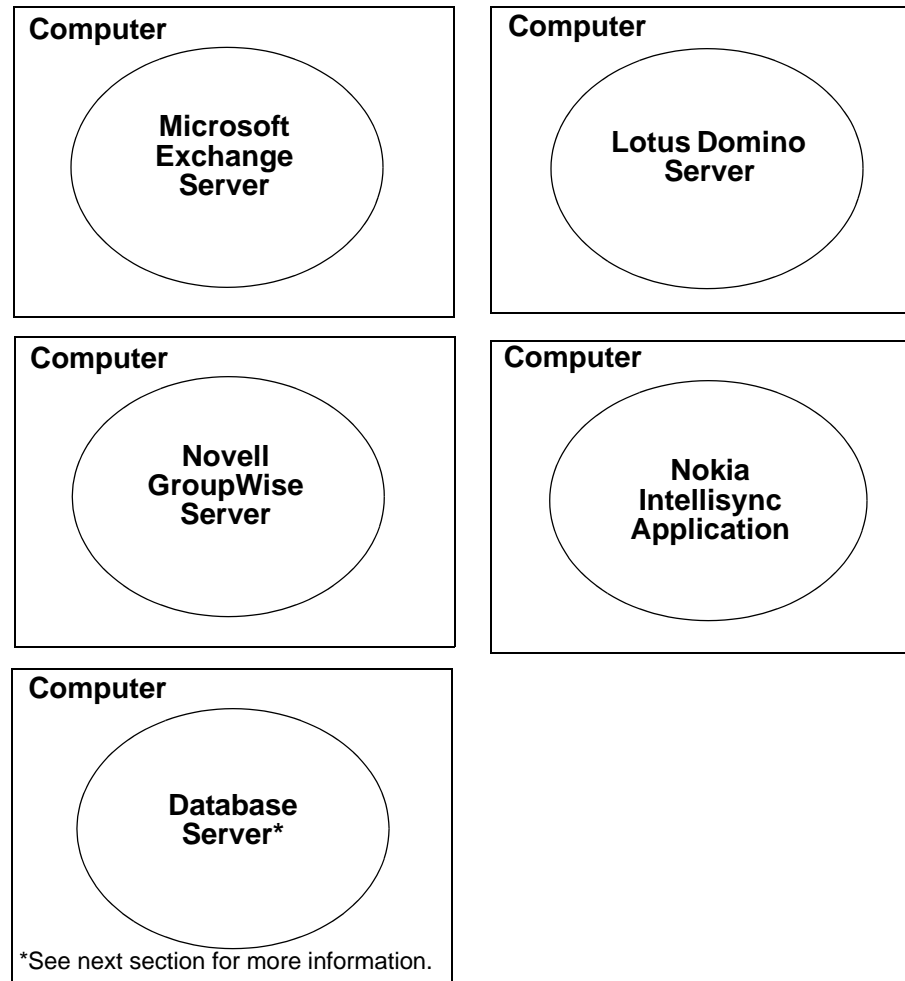
The following table lists the components you should *not* install on the same computer.

This component...	Should not be on a computer with...
Nokia Intellisync Wireless Email	Nokia Intellisync Application Sync
Nokia Intellisync Device Management	Microsoft Exchange server
Nokia Intellisync File Sync	Lotus Domino server
	Novell GroupWise server
	Database server *
Nokia Intellisync Application Sync	Nokia Intellisync Wireless Email
	Nokia Intellisync Device Management
	Nokia Intellisync File Sync
	Database server

* For more information, see [“For Product Evaluation and Small Installations”](#) on page 14.

Your Exchange server, GroupWise server, Domino server, database server, and Nokia Intellisync Application Sync server should be installed on dedicated computers.

Figure 1 Components Requiring Dedicated Computers



For Product Evaluation and Small Installations

For a product evaluation, you may install the Nokia Intellisync server and the database on the same computer. A single computer that meets the minimum requirements can easily handle both the server and database for a product evaluation or small installation (under 100 users).

After evaluating the product, many customers choose to purchase a license key and upgrade their evaluation environment to a production environment. For larger installations where the Nokia Intellisync server and the database are on the same computer, the system administrator is potentially limiting scalability. If you anticipate converting your existing evaluation system to a production system supporting over 100 active users, consider using separate computers for the Nokia Intellisync server and the database during evaluation.

Environment Analyzer

The most common causes for installation problems are environmental, with insufficient or improperly set up prerequisites to blame. The Environment Analyzer checks your system configuration and requirements to help ensure a successful installation.

Environment Analyzer is part of the installation program. When you begin an installation, the Environment Analyzer runs to make sure all conditions are right for a successful installation. If the analyzer detects potential problems, the installation program stops. You must correct any environmental situations before you can install the software.

System Requirements

Table 4 and Table 5 show the minimum requirements for all Nokia Intellisync Mobile Suite products. As minimum requirements, they may not provide the optimal environment for peak performance of your system.

Refer to these requirements to make sure your system meets the minimum requirements.

Table 4 Client Minimum Requirements for Nokia Intellisync Mobile Suite

	PC Client	Pocket PC Client	SmartPhone	Palm OS Client	Symbian
HARDWARE					
Processor Type	Pentium	Supported processor type: ARM - XScale			
Hard Disk Space	64 MB				
Memory	64 MB RAM	32 MB RAM	32 MB RAM	8 MB RAM	32 MB RAM
SOFTWARE					
Operating System	<ul style="list-style-type: none"> Windows Server 2000 Windows Server 2003 Windows XP 	<ul style="list-style-type: none"> Microsoft Windows Mobile Pocket PC 2003 and 2003SE Windows Mobile 5.0 	<ul style="list-style-type: none"> Microsoft Windows Mobile Pocket PC 2003 and 2003SE Windows Mobile 5.0 	Palm OS 4.0 up to 5.4	<ul style="list-style-type: none"> Symbian OS 7.0 Symbian OS 8.0 Symbian OS 9.1 (specifically for E61 S60 3rd Edition)
Browser	Microsoft Internet Explorer 6.0 or later				
Other	Microsoft TCP/IP protocol network environment	ActiveSync 4.1 or later (on desktop or laptop)	ActiveSync 4.1 or later (on desktop or laptop)	HotSync 6.0.1 or later (on desktop or laptop)	Symbian 2nd Ed: UIQ, S60, S80 Symbian 3rd Ed: E61 S60, UIQ

Table 5 Server Minimum Requirements for Nokia Intellisync Mobile Suite

	Nokia Intellisync Mobile Suite	Wireless Email	Device Mgmt	File Sync	RealSync Server	Application Sync
HARDWARE						
Processor	Pentium III 900MHz	•	•	•	•	•
Hard Disk Space	5 GB free disk space	•	•	•	•	•
Memory	1 GB RAM	•	•	•	•	•
SOFTWARE						
Operating System	Windows Server 2000 (SP4) Windows Server 2003 (SP1)	•	•	•	•	•
Browser	IE 6.0 or later	•	•	•	N/A	•
Other	MS TCP/IP Protocol network environment	•	•	•	•	•
	Microsoft Management Console 1.2	•	•	•	•	•
Supported Databases (see the following page for additional information)	SQL Server 2000 (SP3) SQL Server 2005	• Plus: Sybase Adaptive Server Anywhere 9.0.1	• Plus: Oracle 9i Sybase Adaptive Server Anywhere 9.0.1	• Plus: Oracle 9i Sybase Adaptive Server Anywhere 9.0.1	•	• <i>See Nokia Intellisync Application Sync Certifications List</i>
OTHER REQUIREMENTS						
Permissions	Local Admin	•	•	•	•	Domain Admin
Open port 443	Open port 443 from IMS server to Internet for communication with the license server	•	•	•	•	•
Latency between IMS server and other backend server, database, or file system	36 milliseconds or less	*	*	*	*	*

• Indicates minimum requirements for Nokia Intellisync Mobile Suite

Important Notes

- You must open port 443 from the Intellisync Mobile Suite server to the Internet so the installation has access to the license server.
- Ensure the server's \temp directory has a minimum 1 GB free space to successfully extract installation files.
- Do not install any component of Nokia Intellisync Mobile Suite through Terminal Services, as your system may not work properly.
- The latency between the Nokia Intellisync Mobile Suite server and a backend server, database, or file system, should be 36 milliseconds or less. Any other setting is not recommended.
- If you are upgrading the Nokia Intellisync Mobile Server from a 6.x version directly to an 8.x version, your SSL certificate must be set up to export the private key or the upgrade installation will not complete. To set this option on your SSL certificate, gather the certificate information, uninstall the certificate, and then reinstall the certificate, selecting the “Yes, export the private key” option. This does not apply to servers upgrading from Intellisync Mobile Suite version 7.x to an 8.x version.

Additional Information About Server Requirements

Database Information

Nokia Intellisync Mobile Suite requires one of the supported databases (as listed in the previous table) to operate. During installation, you can point to an external database on another computer.

Oracle 9i

Nokia Intellisync Device Management, File Sync, and Application Sync all support Oracle 9i. If you are using Oracle 9i as your database, create your database and run the scripts that Nokia provides to create required system tables *before* installing the software. The scripts are in a directory called “scripts” in the installation source folder. To prepare your Oracle database, follow these steps:

1. Use an application suited for running SQL scripts (such as Oracle's SQL Plus) to connect to your database. Open the script for Oracle.
2. Run the script to create the Nokia Intellisync Device Management/File Sync system tables.
3. Run the script to create the Nokia Intellisync Device Management/File Sync common tables.
4. Open your database and verify the system tables are created.
5. Create a system DSN that points to the database containing the Nokia Intellisync tables.

The Oracle script creates a database user named “syncprep” with a password of “syncprep.” You can use this user/password combination to access the tables.

SQL Server

Nokia recommends that you install the SQL Server in case-insensitive mode.

If you are using SQL Server with named instances, specify the TCP/IP port used by the named instance when prompted for database server, username, and password information.

Note

Nokia Intellisync Wireless Email does not support Oracle. If you use SQL Server with Wireless Email and you use Oracle with File Sync, Application Sync, or Device Management, Nokia recommends that you install the two databases on separate servers.

2 Server Installation

Overview

This chapter contains the information for installing Nokia Intellisync Mobile Suite on the server. In addition to basic installation instructions, there are steps you can take before and after installation to make sure Nokia Intellisync Mobile Suite functions correctly.

Before You Install

Complete the following tasks *before* you install the software:

- Read the Release Notes document in the installation source folder for important information about installing this version of Nokia Intellisync Mobile Suite.
- Using the requirements in [Chapter 1, “Introduction and Requirements,”](#) verify all prerequisite software is installed and functioning properly.
- Read [“Collecting Information”](#) on page 19 and [“The Nokia Intellisync Web Site”](#) on page 24.
- Enable the RunAs service for the duration of the installation. RunAs allows you to run specific tools and programs with different permissions than the user's current logon provides. For more information, refer to the Microsoft Windows online help.
- Close all applications.

Collecting Information

You must collect specific information before you begin the installation. The amount of information varies based on the type of installation (new, upgrade, or evaluation) and the installation feature you select. Refer to *ServerInstallChecklist.doc* in the installation source folder to gather information for Nokia Intellisync Mobile Suite and the Remote Admin Console.

If you are installing Wireless Email for Microsoft Exchange, refer to *EInstall_Exchange.doc* in the installation source folder and complete the checklist before you install. If you are installing Wireless Email for Lotus Domino, refer to *EInstall_Domino.doc*. If you are installing Wireless Email for Novell GroupWise, refer to *EInstall_GroupWise.doc*.

By completing these checklists before you install the software, you have important information readily available for the installation. In addition, you are verifying prerequisites to help ensure a successful installation.

Server Installation

The server installation program uses the Environment Analyzer to ensure your computer meets specific requirements before installing software for the server and the Remote Admin Console. If the Environment Analyzer detects a problem, a message appears and the installation stops. You can restart the installation once you correct the problem.

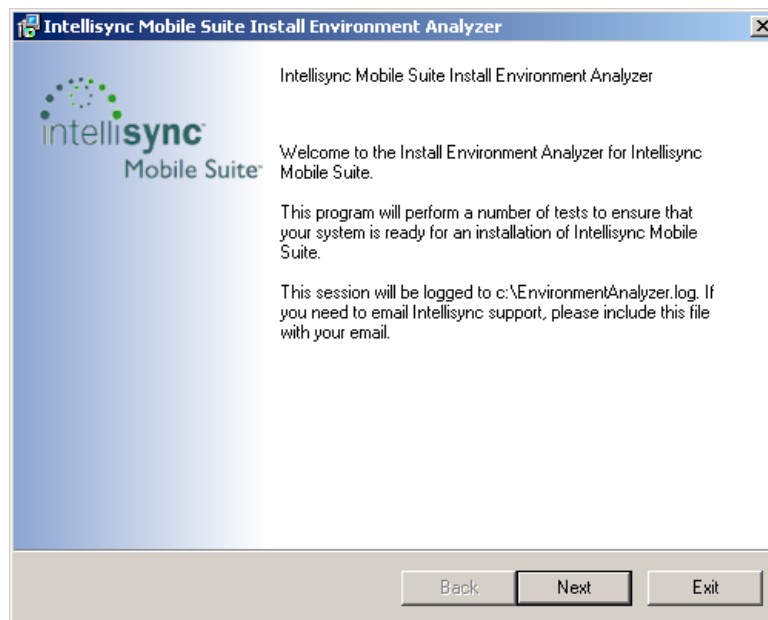
To install the Nokia Intellisync Mobile Suite server

1. Close all applications.
2. Insert the CD into the drive of the computer you intend to use as the Nokia Intellisync Mobile Suite server or as a remote administration computer.

The setup program starts automatically. If the autostart feature is disabled on the computer, you can run the installation program manually. From Windows Explorer, navigate to the installation source folder and double-click Setup.exe. The Welcome panel appears.

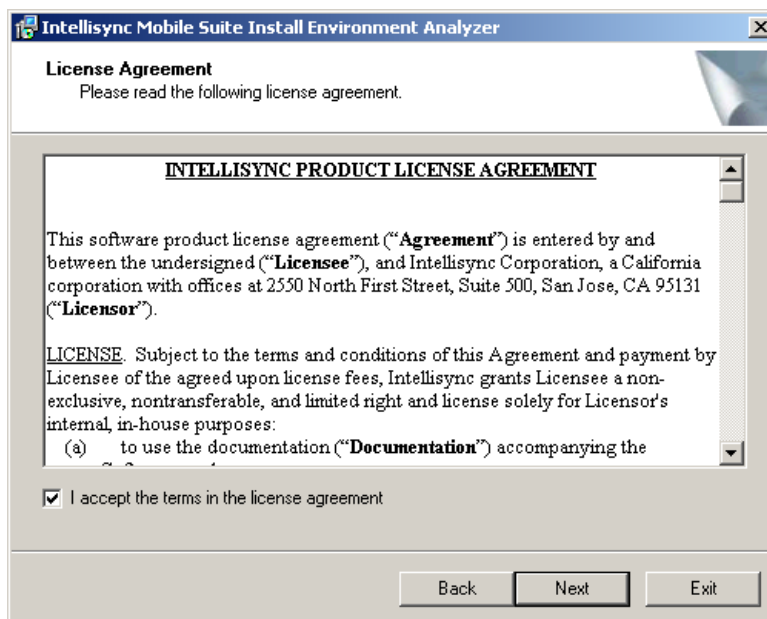
3. Click Next.

The contents of the installation package extract and the Welcome panel of the Install Environment Analyzer appears.



4. Click Next.

The License Agreement panel appears.

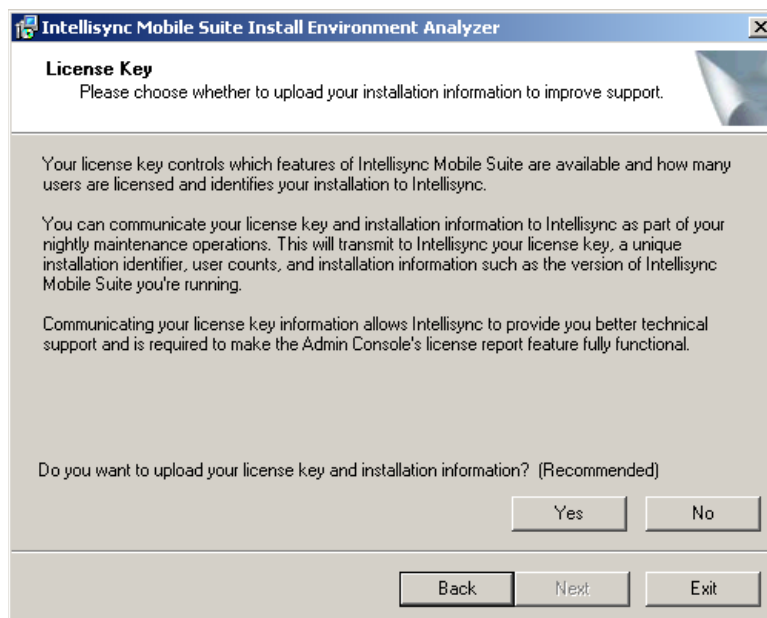


5. Read the license agreement, select "I accept the terms in the license agreement, and then click Next.

The License Key panel appears.

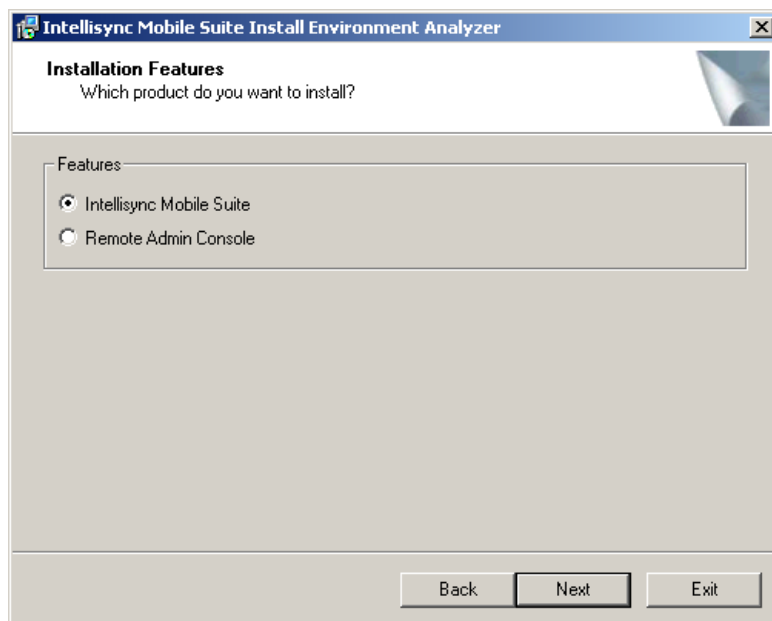
6. Enter the license key for your software, and then click Next.

The next License Key panel appears.



7. Do one of the following:
 - Click Yes to upload your license key and installation information.
 - Click No if you prefer not to upload the information.
8. Click Next.

The Installation Features panel appears.

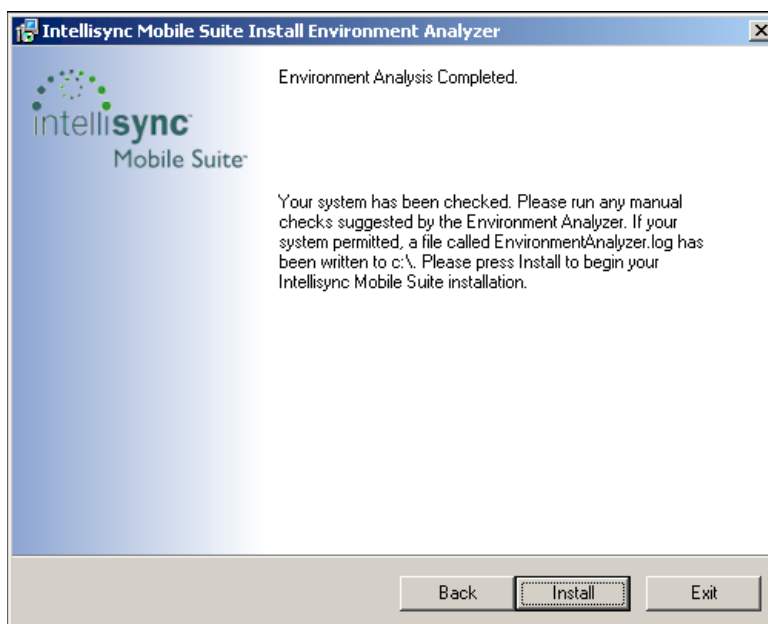


9. Select one of the following installation options:
 - **Intellisync Mobile Suite.** Installs the complete server program for all Nokia Intellisync Mobile Suite products. Only products enabled by the license key are accessible.
 - **Remote Admin Console.** Installs only remote administration components, including the Nokia Intellisync Mobile Suite control, on a computer other than the Nokia Intellisync server.
10. Click Next and continue following the directions that appear.

The installation program prompts you for the information you collected on the following checklists:

- EAInstall_Exchange.doc, EAInstall_Domino.doc, or EAInstall_GroupWise.doc
- ServerInstallChecklist.doc

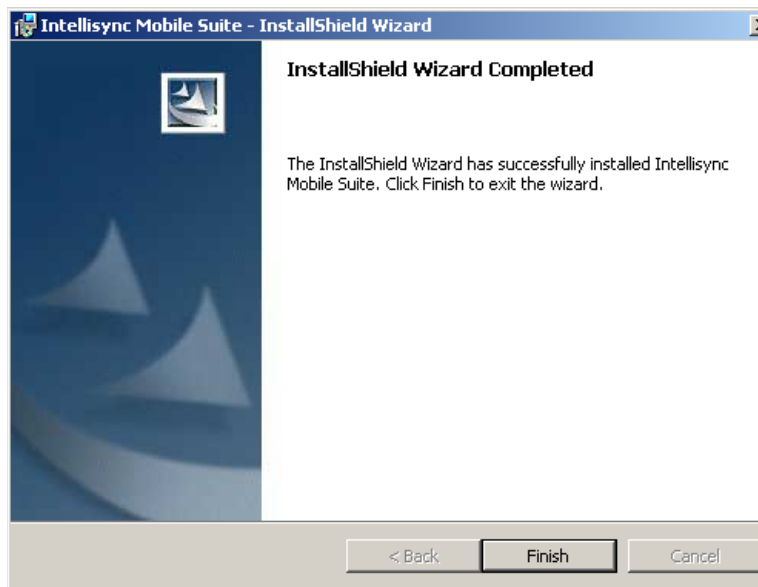
After entering all necessary information, a panel appears similar to the following.



11. Click Install to begin installing the software.

12. Follow the prompts that appear.

When the installation completes, the following panel appears.



The Nokia Intellisync Web Site

Nokia Intellisync Mobile Suite does not modify the existing default Web site during the installation process (except to stop it). The Web site used by Nokia Intellisync Mobile Suite should be the only site running on the server, and this site should not be used by another Web site.

Installing the Software on Multiple Servers

If you expect to serve a large number of users, consider running Nokia Intellisync Mobile Suite across multiple servers to balance the load.

Nokia Intellisync Mobile Suite is designed to support multiple or clustered servers in most load balancing environments, including Windows 2000 Advanced Server Network Load Balancing, Cisco Systems LocalDirector, and SonicWALL Load Balancer, among others.

The steps involved in installing the Nokia Intellisync Mobile Suite software on multiple servers include:

- [Installing the Secure Gateway](#)
- [Setting Up the Remote ASA Database Server](#)
- [Installing ASA on Nokia Intellisync Mobile Suite Servers](#)
- [Installing and Configuring Nokia Intellisync Mobile Suite Servers](#)

Installing the Secure Gateway

The first step for running Nokia Intellisync Mobile Suite on multiple servers is to install the Secure Gateway.

For detailed information on installing and configuring the Secure Gateway, refer to the *Nokia Intellisync Mobile Suite Secure Gateway Administrator's Guide*. Keep the status.html page open after the installation completes.

Setting Up the Remote ASA Database Server

After installing Secure Gateway, complete the following steps to set up a remote ASA database server.

1. Install Sybase ASA 9.0 with all default options to the selected database server.

Note

For more information about Sybase SQL Anywhere, refer to http://www.iAnywhere.com/developer/product_manuals/sqlanywhere.

2. Choose Start > Programs > SQL Anywhere 9 > Sybase Central.
The Sybase Central window opens.
3. Select Adaptive Server Anywhere, click the Utilities tab, and double-click Create Database.
The Create Database wizard appears.
4. Follow the steps in the wizard, clicking Next after each entry:
 - Select “Create a database on this computer.”
 - Enter a name for your database file.
 - Enter a name for the transaction log file.
 - Select to maintain a mirror log file (optional).
 - Select Install jConnect meta-information support.
 - Click Next through the remaining options keeping the default choices.
 - Click Finish to create the database.
5. Select Adaptive Server Anywhere and click the Services tab.
6. Right-click, then choose New > Service.
The Create a New Service wizard appears.
7. Follow the steps in the wizard, clicking Next after each entry:
 - Select Network Database Server.
 - Choose the local path.
 - Do not use parameters for the service.
 - Select Local system account.
 - Select Automatic startup type.
 - Select “Start the service now” and click Finish.

The Server startup options box appears. The Database field should contain the path to the database created in steps 4 through 12 above. The Server name field should contain the name of the database.
8. Click OK.

Installing ASA on Nokia Intellisync Mobile Suite Servers

After setting up a remote ASA database server, install ASA on the servers designated for Nokia Intellisync Mobile Suite. Configure ASA as a data source by completing the following steps.

1. Choose Start > Programs > Administrative Tools > Data Sources (ODBC).
2. Click the System DSN tab, and then click Add.
The Create New Data Source box appears.
3. Select Adaptive Server Anywhere 9.0 and click Finish.
The ODBC Configuration box appears. The ODBC tab is selected as default.
4. Enter a Data source name to use during the Nokia Intellisync Mobile Suite installation.

5. Click the Login tab, and enter **dba** as the UserID and **SQL** as the Password. These are the Sybase default UserID and password. Refer to the Sybase Adaptive Server Anywhere documentation if you want to change these defaults.
6. Click the Database tab, and enter the Server name and Database name of the remote ASA database server.
7. Click the Network tab.
8. Select TCP/IP, and enter the host and port number. The host is the Sybase computer name as seen on the network, and the port number is the default Sybase port number. The port number can be found by double-clicking the Sybase icon on the system tray of the Sybase Database Server. An example of the format is `host=servername.com;port=2638`.
9. Click the ODBC tab, and then click Test Connection.
10. Click OK.

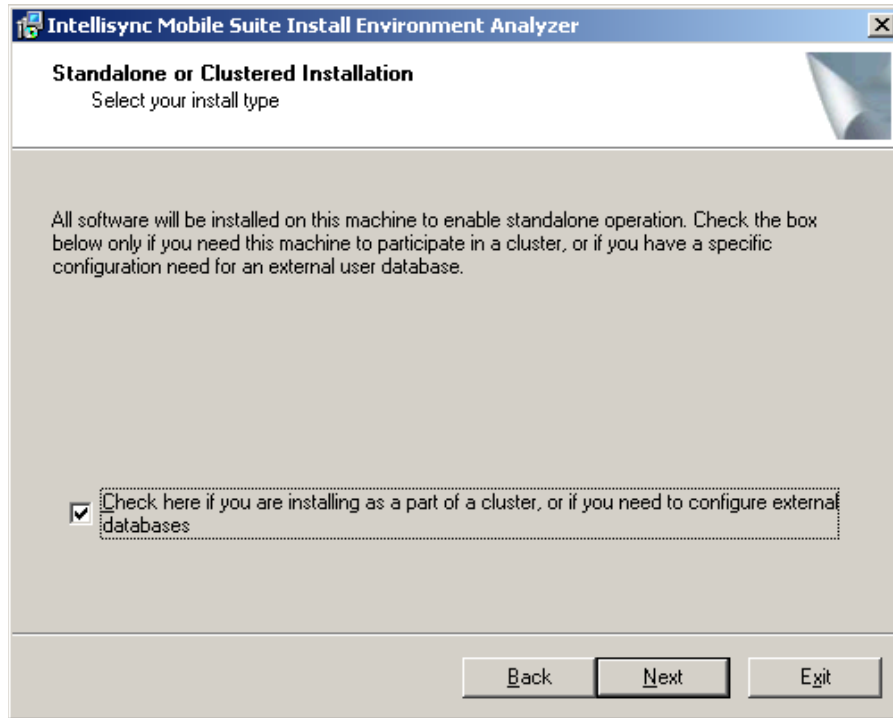
Installing and Configuring Nokia Intellisync Mobile Suite Servers

After installing and configuring ASA on the servers designated for Nokia Intellisync Mobile Suite, install and configure those servers by completing the following procedures:

- [To install the Nokia Intellisync Mobile Suite Server](#)
- [To configure properties for the Nokia Intellisync Mobile Suite Server](#)

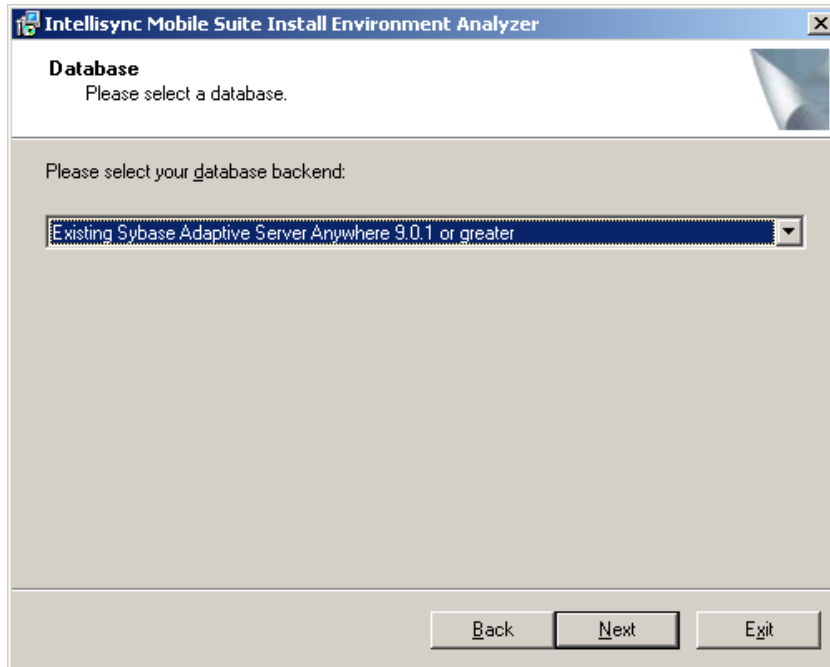
To install the Nokia Intellisync Mobile Suite Server

1. Refer to “[Server Installation](#)” on page 20 for steps to start the process. During the installation, the Standalone or Clustered Installation screen appears similar to the following.

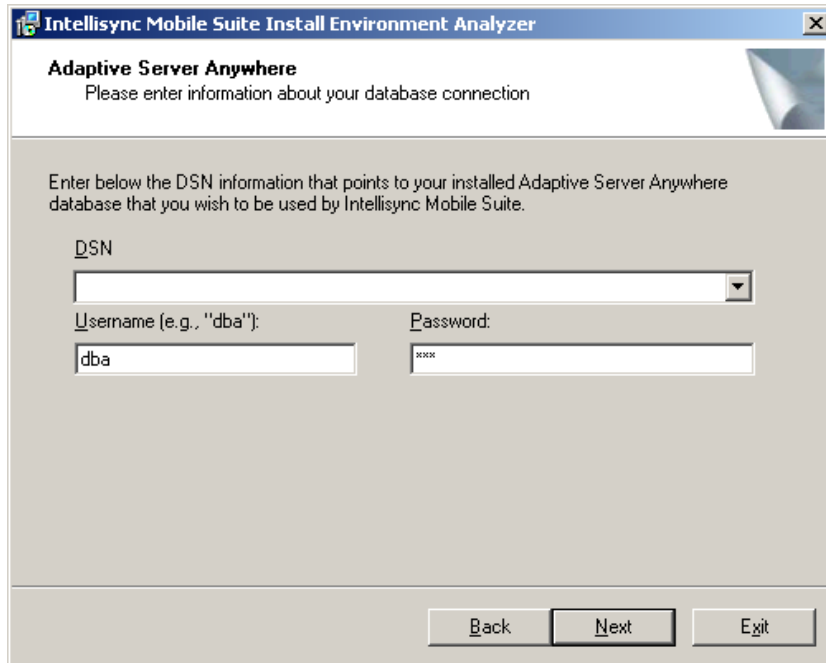


2. Select the option “Check here if you are installing as part of a cluster...”
3. Click Next.

4. When the Database screen appears, select Existing Sybase Adaptive Server Anywhere 9.0.1 or greater as the database back end and click Next.



5. When the Adaptive Server Anywhere screen appears, enter the following information, and then click Next:
 - The DSN name created earlier
 - **dba** in the Username field (the default for Sybase)
 - **SQL** in the Password field (the default for Sybase)



6. Follow the remaining instructions that appear until the server installation is complete.

To configure properties for the Nokia Intellisync Mobile Suite Server

1. From the Windows Start menu, choose Programs > Intellisync Mobile Suite > Admin Console.
The Intellisync Mobile Suite control appears.
2. From the console tree, select Intellisync Mobile Suite.
3. Choose Action > Properties.
The Intellisync Mobile Suite Properties dialog box appears.
4. Click the Directories tab. For the Shared File System, select Single location and enter the disk location to store data for Nokia Intellisync Mobile Suite.
5. Click the Secure Gateway tab, click Add, enter the Secure Gateway server name, and click OK.
6. Click the Server Name tab.
7. Enter the Secure Gateway server name in the Website Server Name, Sync Server Name, and Network Push Server fields, and enter the Nokia Intellisync Mobile Suite server name in the Internal Server Name field.

8. Click OK to close the Properties box.
9. Restart the Intellisync Mobile Suite service.
 - Choose Start > Programs > Administrative Tools > Services.
 - Select the Intellisync Mobile Suite service.
 - Choose Action > Start.
10. Refresh the status.html page on the Secure Gateway server to note the IP address and connection status of the Nokia Intellisync Mobile Suite server.
11. Install all other Nokia Intellisync Mobile Suite servers on their respective computers using the same procedures described in this section.

Domino Cluster Failover Support

Domino cluster failover support in the Lotus Notes Translator is independent of a Nokia Intellisync Mobile Suite installation on multiple servers. Domino server configuration determines support of Domino cluster failover.

If the Domino server has been configured to support cluster failover, this feature can be used with Nokia Intellisync Mobile Suite. If one server in the Domino cluster fails, that server's requests from Nokia Intellisync Mobile Suite can be redirected to another server in the cluster. By default, Domino cluster failover support is not enabled in Nokia Intellisync Mobile Suite. Use the following instructions to enable Domino cluster failover support.

To enable Domino cluster failover support

1. On the computer on which the server is installed, open a browser window or use the WebAdmin browser window.
2. Enter `localhost/diag` in the address bar, and click Go. The System Info & Diagnostics page appears.
3. Click Wireless Email.
4. In the Add Property field, enter `DominoClusterSupport` and enter T for the value.
5. Click Set.
6. Exit the browser window.
7. Restart the server to activate the setting.

Note

To allow Read/Unread e-mail marks to synchronize correctly when the server is in failover, the Advanced Database property "Replicate unread marks" must be enabled for "Clustered servers only" or "All servers." Additionally, the Advanced Database property "Don't maintain unread marks" should not be enabled.

Uninstalling the Server Software

To uninstall the server software

1. Close all programs.
2. Choose Start > Settings > Control Panel.
The Control Panel window appears.
3. Double-click Add/Remove Programs.
The Add/Remove Programs Properties window appears.
4. From the list, select the Intellisync Mobile Suite software and click Remove.
An Add/Remove Programs confirmation dialog box appears.
5. Click Yes to confirm the deletion. The InstallShield Wizard appears. The InstallShield Wizard automatically removes the Nokia Intellisync Mobile Suite software and the associated files. The database and data files remain intact.
6. Click Close to close the Add/Remove Programs dialog box.

3 Initial Testing After Installation

Overview

After installing Nokia Intellisync Wireless Email, test your system using the instructions in this chapter.

- [Web Site Availability](#)
- [Domain Logon Test](#)
- [Setting Up Devices](#)
- [Reviewing Exchange Data](#)
- [Reviewing Content](#)
- [Test Complete](#)

Web Site Availability

The first test is to verify that the Web site is available. Users can use the Web site to log in, configure their account settings, and install the device.

1. On the Nokia Intellisync Wireless Email server, type **localhost** in your browser.

The Logon window appears.



NOKIA
Intellisync Mobile Suite
Nokia's Intellisync range of software can manage your mobile devices and keep them updated with application data, email, calendar, contacts, web pages, and files

User Name:
Password:

Login

Remember password on this computer

This step validates that the server is operational and the Web site is available. If you receive an HTTP error, try the following.

- Check the default Web site port and confirm the port is set to 80.
- Restart the computer.

Domain Logon Test

The easiest and best approach to user access is domain authentication, which is the default at installation. For more in depth discussion about authentication choices, refer to the *Nokia Intellisync Mobile Suite System Administrator's Guide*.

Automatic discovery (from Exchange) is available when you are using domain authentication. That is, when an authorized Microsoft Exchange user tries to log on to Wireless Email, the server recognizes the user and creates a new user account in the Intellisync Mobile Suite control.

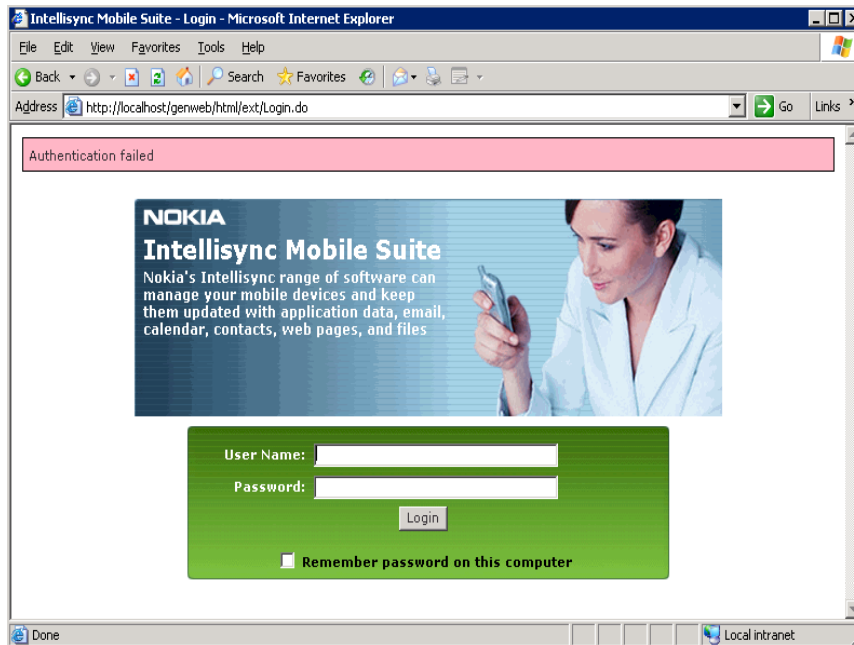
To test domain logon, enter a valid domain user name and password, and then click Go. The domain name must be in the form of domain\username. If your organization is not using domain authentication, use a test user in Intellisync Mobile Suite control.

Depending on the computer capabilities, this may take some time. The first access to the domain controller may be slower than subsequent accesses.

Logon Troubleshooting

If the server does not recognize the account or password, the logon fails.

A screen appears similar to the following.



Make sure you typed the correct user name (including the domain name) and password, and then try again.

If the user name and password are correct but you still cannot log on, try the following suggestions.

- Check your prerequisites checklist to spot any potential problems.
- Ensure that all Nokia Intellisync services are started.
- Check the permissions of the Intellisync installation folder. (If you accepted the default selections during the installation, the installation folder is \\Program Files\Intellisync.)

To select permissions

1. From Windows Explorer, right-click the Intellisync installation folder, and then choose Properties.
2. Click the Security tab.
3. Make sure that *everyone* has permissions with Full Control. If not, select Everyone and then select Full Control.
4. Click Advanced and select the following check boxes:
 - Allow inheritable permissions from the parent to propagate to this object and all child objects.
 - Replace permission entries on all child objects with entries shown here that apply to child objects.
5. Click Apply.
 - a. Make sure the account supplied at installation has rights to “Act as part of the operating system.”
 - b. From the Windows Start menu, choose Settings > Control Panel.
The Control Panel appears.
6. Double-click Administrative Tools, and then Local Security Policy.
The Local Security Settings window appears.
7. Double-click Local Policies, and then User Rights Assignment. A list of policies appears in the detail pane.
 - a. Select “Act as part of the operating system.”
 - b. From the Action menu, choose Properties.
 - c. Make sure the user account supplied at installation is in the group.
 - For non-domain users, make sure the user exists in the alternate source or is in the Intellisync Mobile Suite control.
 - Make sure the number of users does not exceed the number of licenses.

Successful Authentication

Use the information in this section to verify that authentication is working properly.

Successful Access to Lotus Domino

For Domino users, the system queries the Domino Directory and gathers user information from the Domino server. Depending on the access type, the system may automatically discover the mailbox server and mailbox name. If not, then the user may need to manually specify an ID file.

Domino users are prompted to enter their User ID location and password.

Note

When you successfully enter the user ID file, you are finished testing access for Domino users.

Successful Access to Novell GroupWise

For GroupWise users, the system queries the GroupWise server and gathers user information. Depending on the access type, the system may automatically discover the mailbox server and mailbox name. If not, then the user may need to manually specify a valid GroupWise user name and password.

Successful Access to Microsoft Exchange

On successful authentication, the server uses the LDAP port you submitted during the installation to query the Exchange 5.5 server or the Active Directory Server (through the Exchange 2000 server) to gather information. The most important information is mailbox discovery. If you are using domain authentication, you can enter only the valid mailbox for the user.

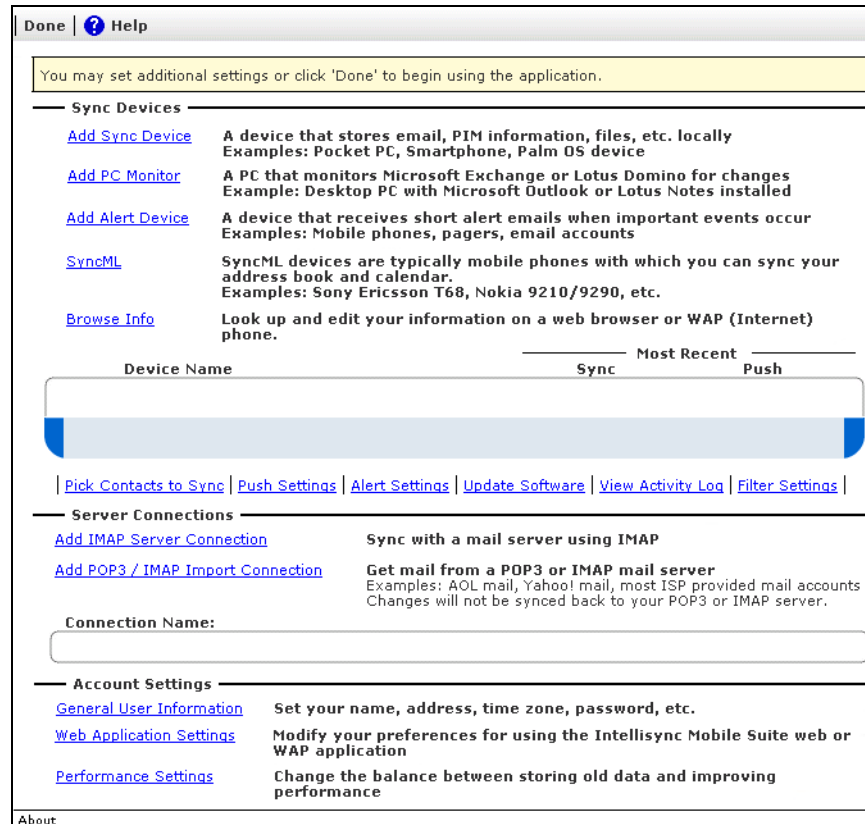
To enter the valid mailbox

1. Click Test Access to validate access to the exchange server.
2. Enter the necessary information.
3. Click Submit.

Access to the Exchange server begins.

Setting Up Devices

After you submit valid account information, the device configuration page appears. Various options are controlled by the default profiles (set using the Intellisync Mobile Suite control). At a later time, you can tune these options for your deployment, as the following window shows.



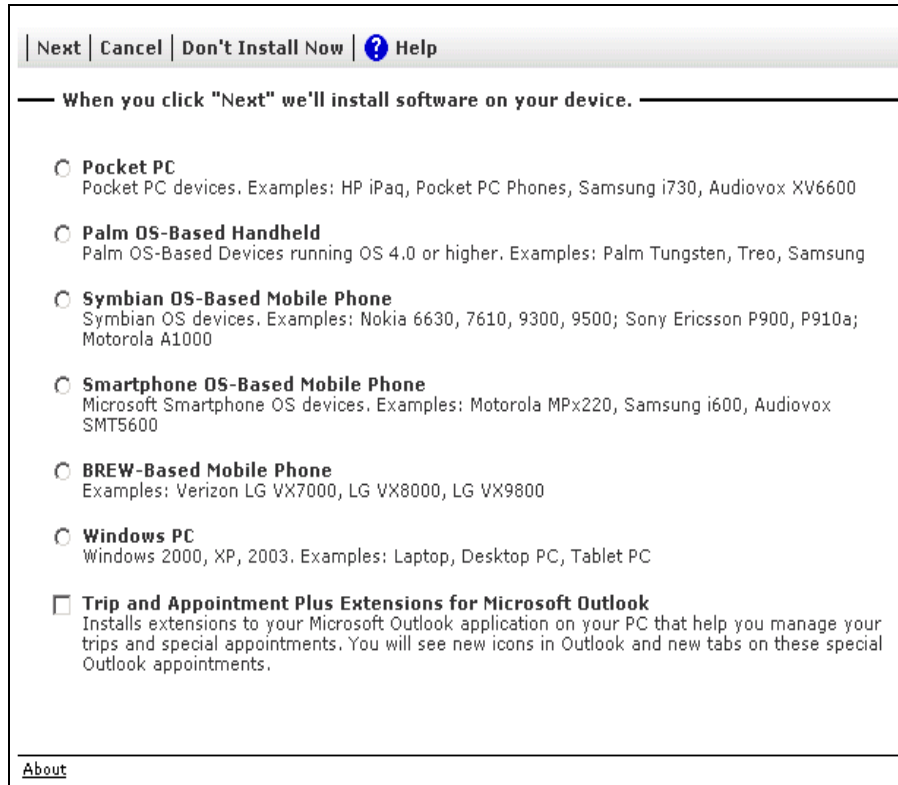
Note

Complete the steps in this section using a computer other than the server. These steps required ActiveSync or HotSync, and these programs are usually not on the server. In fact, Nokia recommends that you do *not* install ActiveSync nor HotSync on the server.

To set up devices

1. Click Add Sync Device.

The Add Sync Devices page appears.



2. Make your selections and follow the prompts.

Note

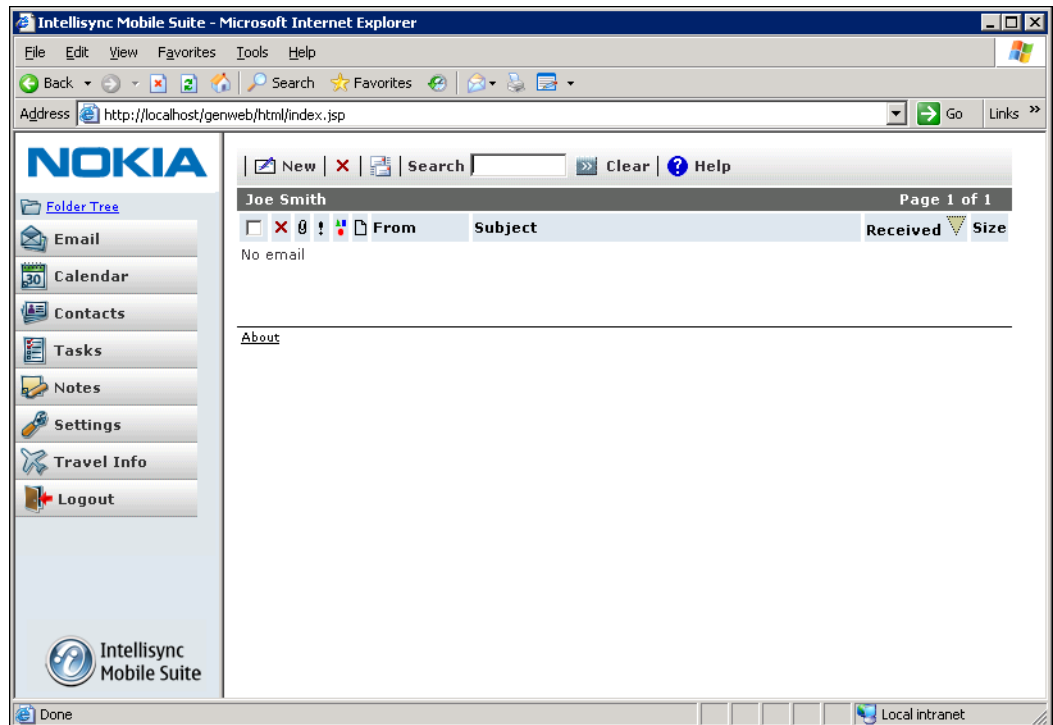
If the device is a Pocket PC, be sure the device is in the cradle and ActiveSync recognizes the device.

If this is a Palm device, be sure this device is connected and has synchronized at least once with the computer you are using.

Users can add devices at any time by selecting the Setup – Account option (or Setup – New Sync Device) from the menu.

Reviewing Exchange Data

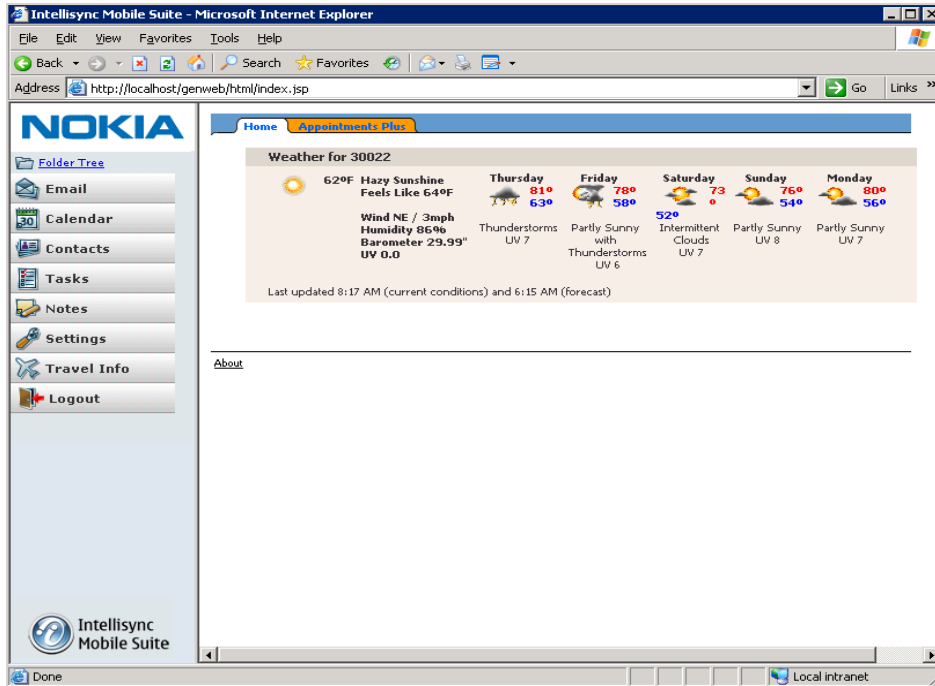
After clicking Done on the device page, the Nokia Intellisync Mobile Suite main page appears.



Use this page to review the data retrieved from the Exchange server. This test is important, as the data you see here will be synchronized to the device. Click an icon on the left to review e-mail, calendar items, contacts, to do items, and memos.

Reviewing Content

If your company purchased the personalized info (or content) option, click Travel Info to verify your local weather information is available.



Test Complete

After you complete these initial tests, the system is ready for user access.

For additional information on setting up and managing your server, see the *Nokia Intellisync Mobile Suite System Administrator's Guide*.

4 Client Install

Overview

This chapter offers options for installing the client software. Before you install the client software, use the requirements in [Chapter 1, “Introduction and Requirements”](#) to verify that all required software is installed and functioning properly on each device.

Client Installation Options

You can install the device software for the users, or you can have the users install the client software themselves. Either way, you have several options available:

- [Installing from the Web Site](#)
- [Installing Wirelessly from the Web Site](#)
- [Installing from a Custom Installation Program](#)

Installing from the Web Site

Users can install software on their devices through the Nokia Intellisync Mobile Suite Web site created by the installation program. To do this, users need the full server URL you entered during the server installation. Instructions for installing software from the Web site are included in the *Nokia Intellisync Mobile Suite Client User's Guide*. For information about distributing these documents to your users, see [“Nokia Intellisync Mobile Suite Client Documentation”](#) on page 10.

Installing Wirelessly from the Web Site

Wireless installation enables users to download and install the Nokia Intellisync Wireless Email client and Sync Client to a mobile device through a wireless connection. The user simply navigates to the installation URL, which can be sent through SMS, adds the server account, and downloads and installs the client.

The installation process is similar to the previous process, although you now have the option to install the client software using a wireless connection.

Installing from a Custom Installation Program

You can use the Client Install Deployment utility to generate a custom, stand-alone installation that allows users to install client software without using the mobile Web site.

The Client Install Deployment utility is available from the Intellisync Mobile Suite control. (From the Intellisync Mobile Suite control, select Profile Settings, General, and then Client Install Deployment.)

For more information, refer to the *Nokia Intellisync Mobile Suite Administrator's Guide*.

Instructions for Outlook

To synchronize Nokia Intellisync Wireless Email with Microsoft Outlook Exchange on the Windows PC client, you must set up a separate folder for synchronized information. You cannot use online or offline folders (.ost) for synchronized information. After installing the Nokia Intellisync Mobile Suite client software on a Windows PC, complete the following setup instructions.

Note

For synchronization with a Windows PC, Nokia Intellisync Wireless Email supports Microsoft Outlook 98, 2000, and XP, and you should configure a mail service (Microsoft Exchange, Internet, and so forth).

Setting Up Microsoft Outlook – Windows 98

A personal folder file (Mobile Outlook.pst) installs with the client software. You can use this file to set up Microsoft Outlook.

To add the file as an Outlook service

1. Start Microsoft Outlook.
2. Choose Tools > Services.
The Services dialog box opens. The Services panel is in focus by default.
3. Click Add.
The Add Service to Profile dialog box appears.
4. Select Personal Folders from the Available information services and click **OK**.
The Create/Open Personal Folders File dialog box appears.
5. Select Mobile Outlook.pst and click Open.
The Personal Folders dialog box appears.
6. Click OK to accept the addition of the Mobile Outlook personal folders.
7. Click OK to close the Services dialog box.

8. If your folders do not appear in Outlook by default, choose the View menu, and then choose Folder List.

A new top-level node called Mobile Outlook appears.

9. Expand the Mobile Outlook node.

The typical set of Outlook folders appears.

You are now ready to set up Wireless Email to synchronize with Microsoft Outlook.

Setting Up Microsoft Outlook – Windows 2000 and XP

A personal folder file (Mobile Outlook.pst) installs with the client software. You can use this file to set up Microsoft Outlook.

To add the file as an Outlook service

1. Start Microsoft Outlook.

2. Choose File > Data File Management.

The Outlook Data Files dialog box appears.

3. Click Add.

The New Outlook Data File dialog box appears.

4. Select Personal Folders File (.pst) and click OK.

The Create/Open Outlook Data File dialog box appears.

5. Select Mobile Outlook.pst and click OK. You may have to browse to \\Program Files\Intellisync Mobile Suite\Client to locate the file.

The Personal Folders dialog box appears.

6. Type a name (Mobile Outlook is a good suggestion) for the folder you want to appear in the Outlook information services list, and then click OK.

The Personal Folders dialog box closes, and Mobile Outlook appears in the Outlook Data Files folder list.

7. Click Close.

Microsoft Outlook saves the changes, and then the Outlook Data File dialog box closes.

8. If your folders do not appear in Outlook by default, choose the View menu, and then choose Folder List. A new top-level node called Mobile Outlook appears.

9. Expand the Mobile Outlook node. The typical set of Outlook folders appears.

You are now ready to set up Wireless Email to synchronize with Microsoft Outlook.

Setting Up Nokia Intellisync Wireless Email for Outlook

You can configure the Nokia Intellisync Mobile Suite Client (for Windows PC) to manage synchronization of Microsoft Outlook with the Wireless Email server.

To configure Outlook with the Nokia Intellisync Wireless Email server

1. Start the Intellisync Mobile Suite client. You can navigate to the program from the Windows Start menu, or right-click the Sync icon on the taskbar and choose Show Main Screen.
2. Click Settings, and select Sync Settings.
The Sync Settings dialog box appears.
3. Click Settings to the right of Microsoft Outlook.
An Options dialog box appears.
4. From the list, select the profile to synchronize with Wireless Email. This should be the same profile in which you created the Mobile Outlook personal folders.
5. Select the Mobile Outlook personal folder store (.pst file) from the list.
6. Click OK.
7. Click Close to close the Sync Settings dialog box.

You are now ready to synchronize Nokia Intellisync Wireless Email with Microsoft Outlook.

Uninstalling the Client Software

This section covers how to remove the Nokia Intellisync Mobile Suite client software from the Pocket PC, Smartphone, Symbian OS device, Palm OS device, and Windows PC, as described in the following procedures:

- [To remove the client software from your Pocket PC](#)
- [To remove the client software from a Smartphone](#)
- [To remove the client software from a Symbian OS device](#)
- [To remove the client software from a Palm OS device](#)
- [To remove the client software from your computer](#)

Note

If you remove software from the Pocket PC but it still exists on the Windows PC, you can reinstall the software using the Add/Remove Programs function of Microsoft ActiveSync.

To remove the client software from your Pocket PC

1. Tap the Windows Start menu.
2. Tap Settings.
3. Tap the System tab.

4. Tap Remove Programs.
5. In the Programs in Storage Memory box, tap Synchrologic Client.
6. Tap Remove.
7. Tap Yes to confirm the delete.
8. Tap OK to exit the Remove Programs panel.

If you do not want to install the client software on the device the next time you synchronize, you must also remove the software from the PC using Add/Remove Programs.

To remove the client software from a Smartphone

1. From the Home panel, navigate to Programs.
2. Choose Settings, Remove Programs, and then choose Synchrologic Client.
3. Select Menu, and then Remove.
4. Choose Yes to confirm the delete.
5. Choose Done to exit the Remove Programs panel.

To remove the client software from a Symbian OS device

1. Tap the Launcher View icon.
2. Tap Applications and select Uninstall.
The Uninstall window appears.
3. Tap Intellisync Client.
4. Tap Uninstall.
A confirmation dialog box appears.
5. Tap Yes.
6. Tap Cancel to exit the Uninstall panel.

To remove the client software from a Palm OS device

1. Tap the Applications icon.
2. Tap the Menu icon.
The Applications (App) list appears.
3. Tap Delete.
The Delete panel appears with a list of applications.

Note

If you remove the software from the Palm OS device but it still exists on the Windows PC, you can reinstall the software using HotSync.

4. Delete any of the following applications that appear:

- EMailAcc
- FileSync
- iFDClient
- Intellisync
- SharedLog
- SyncMail
- Synchrologic

To delete, tap the application, then tap Delete.

5. Tap Yes to confirm the delete.

6. Tap Done to exit the Delete panel.

If you do not want to install the client software on the device the next time you synchronize, you must also remove the software from the PC using Add/Remove Programs.

To remove the client software from your computer

1. Close all programs.

2. Choose Start > Settings > Control Panel.

The Control Panel window appears.

3. Double-click Add/Remove Programs.

The Add/Remove Programs window appears.

4. From the list, select the Nokia Intellisync Mobile Suite Client software you want to remove and click Remove.

5. Click Yes in the delete confirmation dialog box.

The InstallShield Wizard appears and removes the client software and the associated files.

6. Click Close to exit the Add/Remove Program Properties window.

Index

A

Admin Console. See Intellisync Mobile Suite control

B

basic data synchronization (RSS) 12
before you install 19

C

client uninstall 44
clustered servers 24

D

database information 17
databases supported 16
dedicated servers 13
Device Management
 overview 12
Device Management. See Intellisync Device Management
documentation
 accessing electronic documents 8
 accessing online help 8
 conventions 5
 files you can customize for users 10
 structure 5
documentation, related 8

E

Environment Analyzer 15
 during installation 20
evaluation software 14

F

File Sync overview 12

H

handheld devices
 relational data sync 12
hardware requirements 15, 16
help
 accessing 8
 list of available help systems 8

I

installation
 analyzer 15
 important notes 17
installing
 ASA database on IMS server 25
 client software 41
 on multiple servers 24
 remote administration components 22
 remote ASA database server 24
 Secure Gateway 24
 server software 20

Intellisync Admin Console. See Intellisync

Mobile Suite control

Intellisync Mobile Suite

creating system tables for Oracle 17

licensing 13

overview 11

permissions 16

server installation 20

Intellisync Mobile Suite control

Client Install Deployment utility 42

configuration options 37

creating new users 34

viewing license information 13

L

license 13

M

Mobile Gateway. See Intellisync Mobile

Gateway

multiple servers 24

O

online help

accessing 8

list of available help systems 8

Oracle 9i

scripts for creating tables 17

ost file (online or offline folders) 42

overview

Device Management 12

Environment Analyzer 15

File Sync 12

RealSync Server 12

Wireless Email 11

P

permissions for Intellisync Mobile Suite 16

PIM and e-mail synchronization

overview 11

preinstallation analyzer 15

prerequisites

hardware 15

software 15

verified by Environment Analyzer 15

product evaluation 14

product license 13

pst file (personal folder store) 44

R

RealSync Server (RSS) 12

Related 8

related documentation 8

relational data to handheld devices 12

release notes 19

remote administration installation 22

removing client software 44

requirements

hardware 15, 16

important notes 15

permissions 16

software 15, 16

RSS 12

S

scripts

Oracle 9i 17

server

analyzer 15

clustered 24

configuration 13

dedicated 13

installation 20

- multiple 24
- multiple Web sites on one server 24
- uninstalling 31
- software
 - evaluation 14
 - installing client 41
 - license 13
 - requirements 15, 16
 - uninstalling client 44
- Software Distribution. See Device Management
- supported databases 16
- system analysis 15
- system requirements
 - important notes 15
 - minimum/maximum 15
- system tables
 - creating for Oracle 17

U

- uninstalling client software 44
- upgrade license 13

W

- Wireless Email overview 11

